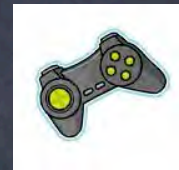
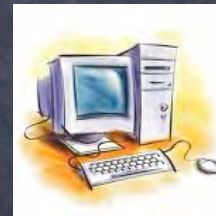


EXAMINING BELIEFS
ABOUT CONFLICT AND
VIOLENCE

Lesson 3

• AS WE DISCUSSED BEFORE, THE VIOLENCE WE SEE IN THE MEDIA AFFECTS OUR VIEW OF THE WORLD.



You will see several
different beliefs.

For each one tell if you
agree, disagree or
sometimes both?

"People are basically
mean."

"Fighting doesn't solve
problems, it just makes
things worse."

"Fighting makes me feel
powerful."

"Watching a fight and
doing nothing is
supporting the fight?"

"If I refuse to fight
then others will think
I'm a coward."

"Some people get hurt
because they are looking
for trouble."

"If someone disrespects
me, I have to fight
them."

"Some people get hurt
because they are looking
for trouble."

"If someone disrespects
me, I have to fight
them."

Many things affect our attitudes and beliefs—our families, our friends, television, books, advertising, news coverage, and music. And what we believe affects what we do. If we hold hostile beliefs, such as “people are basically mean” than we are more likely to act in a hostile way. Therefore, it is important for us to think about our beliefs and try to understand where they come from and why they don't always hold true.