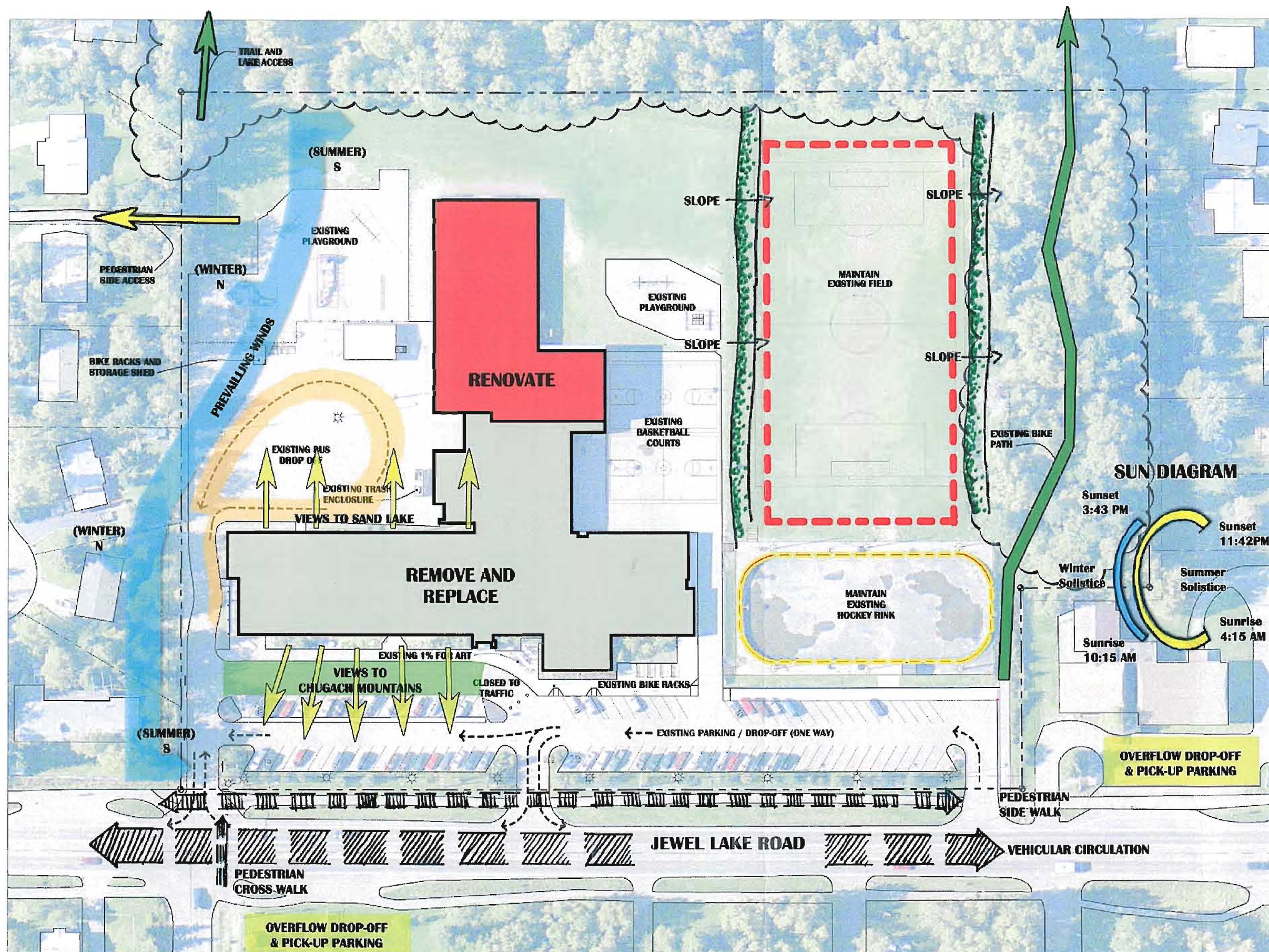




# SAND LAKE ELEMENTARY SCHOOL

JANUARY  
05, 2009



## EXISTING SITE PLAN & ANALYSIS

SCALE: NT6

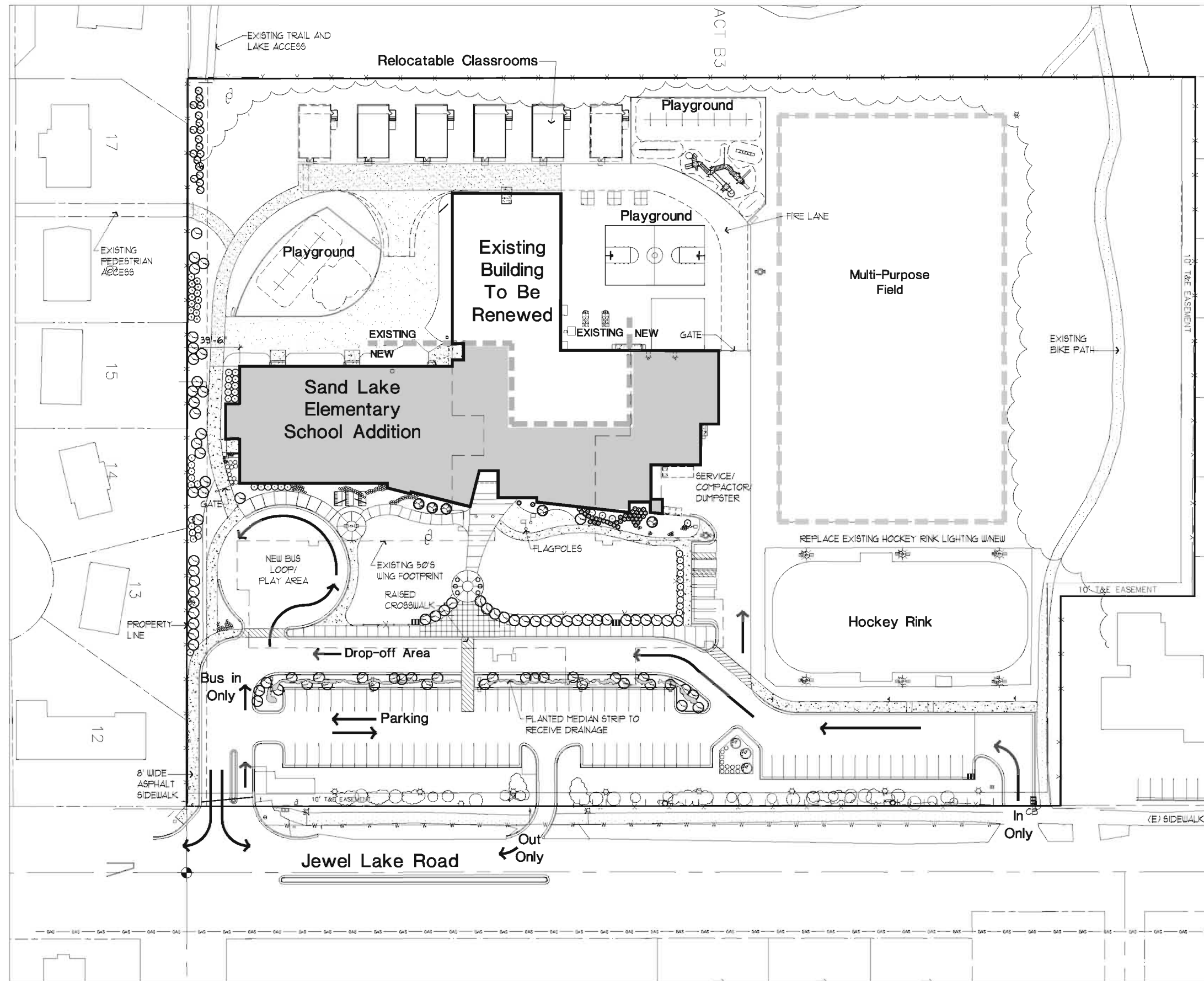


1231 Gambell Suite: #400  
Anchorage, Alaska 99501  
PHONE: (907) 349-1425 FAX: (907) 349-1325



# SAND LAKE ELEMENTARY SCHOOL

**JANUARY  
05, 2009**



## SCHEMATIC SITE PLAN

SCALE: 1" = 40'-0"

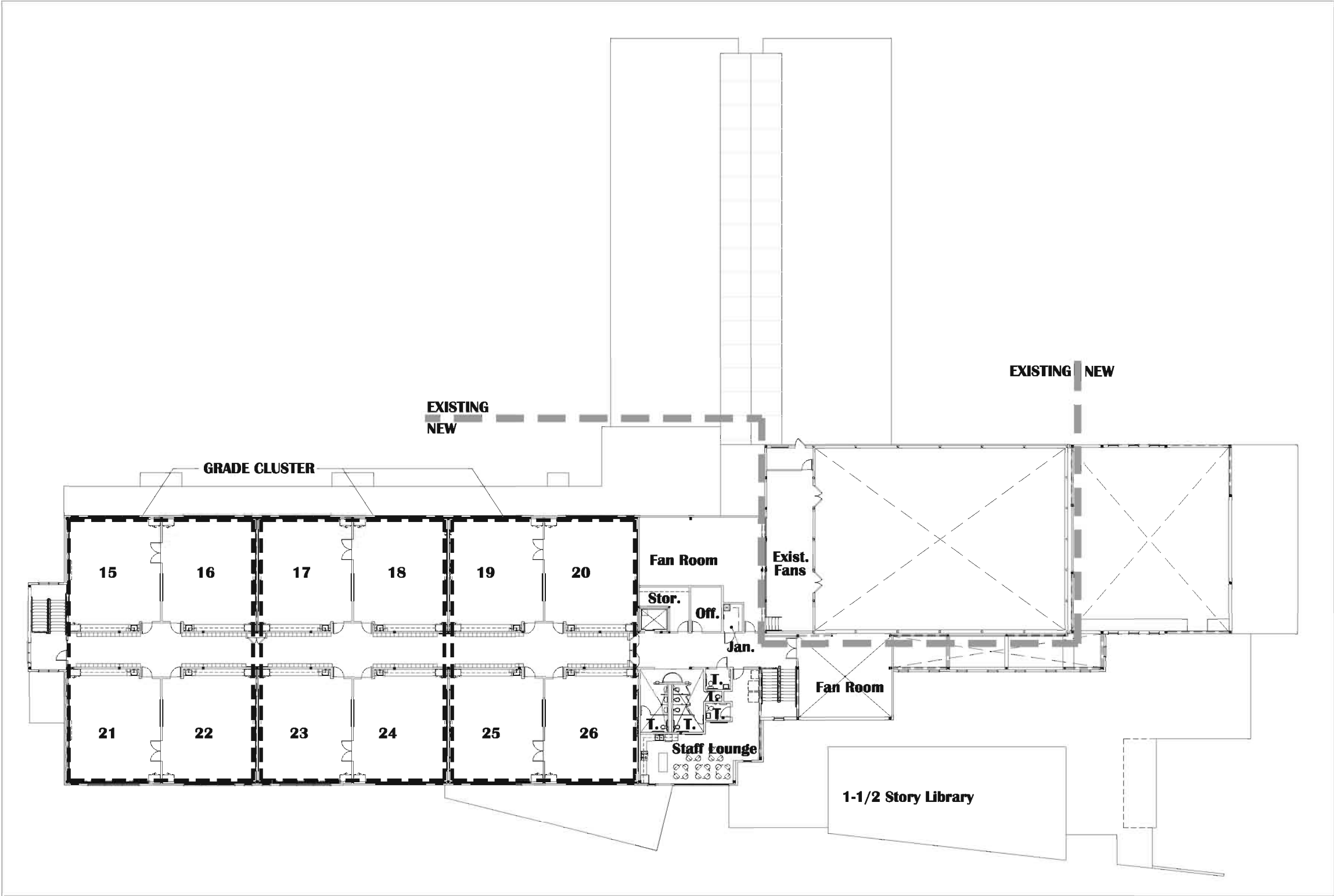


1231 Gambell Suite: #400  
Anchorage, Alaska 99501  
PHONE: (907) 349-1425 FAX: (907) 349-1325



**SAND LAKE  
ELEMENTARY  
SCHOOL**

**JANUARY  
05, 2009**



**SCHEMATIC SECOND FLOOR PLAN**

SCALE: 1/16"=1'-0"



**1231 Gambell Suite: #400  
Anchorage, Alaska 99501  
PHONE: (907) 349-1425 FAX: (907) 349-1325**



# SAND LAKE ELEMENTARY SCHOOL

JANUARY  
05, 2009



## SCHEMATIC FIRST FLOOR PLAN

SCALE: 1/16"=1'-0"

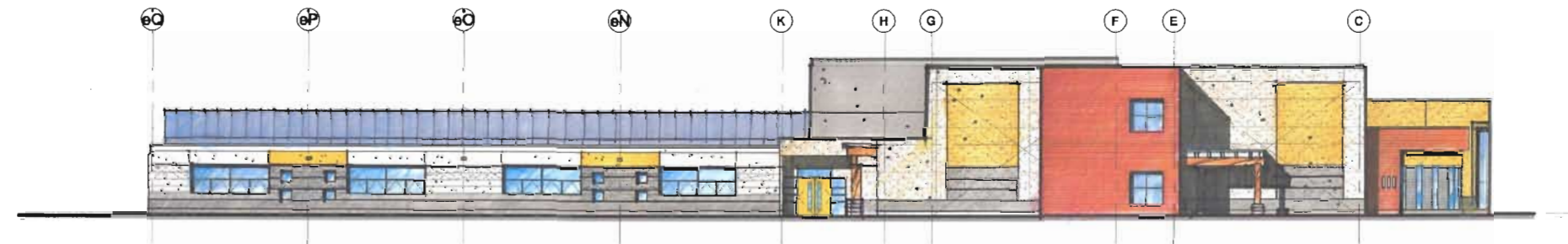


1231 Gambell Suite: #400  
Anchorage, Alaska 99501  
PHONE: (907) 349-1425 FAX: (907) 349-1325

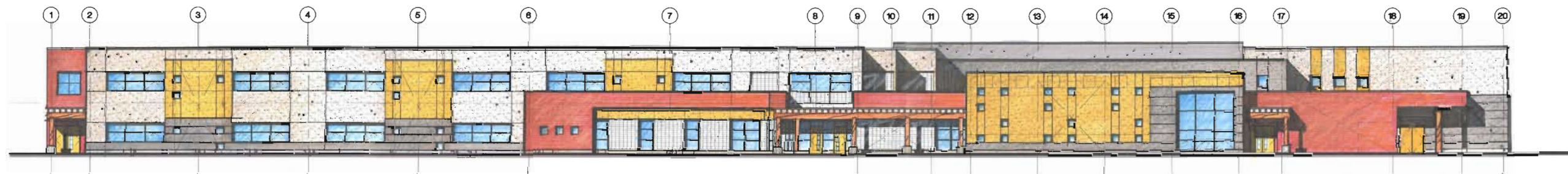


**SAND LAKE  
ELEMENTARY  
SCHOOL**

**JANUARY  
05, 2009**



**SOUTH ELEVATION**



**EAST ELEVATION**



**SCHEMATIC EXTERIOR ELEVATIONS**

SCALE: NTS

**SPACE SUMMARY**  
**Supplemental Ed Spec**

**ATTACHMENT B**  
**Sand Lake Elementary School**  
**Nvision Architecture - December 23, 2008**

	Exist. Sand Lake	Ed Spec - 26 CR	Approved Suppl. Ed. Spec - 26 CR	Proposed Design- 26 CR	Remarks
	SQ FT	SQ FT	SQ FT	SQ FT	
<b>PROGRAM SPACES</b>					
<b>Administrative Support</b>					
Reception	84	150	150	150	
Secretarial (Includes Secure Closet)	417	420	420	443	
Student Timeout		40	40	32	
Student Timeout			40	31	
Conference	176	225	225	167	
Principal's Office	147	250	250	249	
PTA/Community Schools	163	250	250	245	
Nurse Room (including restroom)	487	335	550	636	Program delivery increase
Principal Intern		90	150	123	
<b>Subtotal Administration</b>	<b>1,474</b>	<b>1,760</b>	<b>2,075</b>	<b>2,076</b>	
<b>Staff Support Services</b>					
Staff Lounge including restrooms	762	725	725	710	
Staff Rest Room			50	55	
Staff Rest Room			50	51	
Staff Rest Room			50	40	
Production and Storage (Workroom)	214	365	365	478	Increased due to number of Teachers
<b>Subtotal Staff Support</b>	<b>976</b>	<b>1,090</b>	<b>1,240</b>	<b>1,334</b>	
<b>Student Support Services</b>					
Counseling Office		250	150	229	
Indian Education	100	300	150	166	
Psychology Office		100	120	182	
Itinerant Office		100	120	127	
Itinerant Office (Speech)		100	120	124	
English Language Learners (Bilingual Ed)	432	150	400	355	
<b>Subtotal Student Support</b>	<b>532</b>	<b>1,000</b>	<b>1,060</b>	<b>1,183</b>	
<b>Classroom Instruction</b>					
Kindergarten w/ toilet	4,291	1,250	1,200	1,111	
Kindergarten w/ toilet		1,250	1,200	1,148	
Kindergarten w/ toilet		1,250	1,200	1,148	
Kindergarten w/ toilet		1,250	1,200	1,159	
Primary Classroom - 1st Gr. - w/ toilet	9,093	1,000	975	965	
Primary Classroom - 1st Gr. - w/ toilet		1,000	975	966	
Primary Classroom - 1st Gr. - w/ toilet		1,000	975	966	
Primary Classroom - 1st Gr. - w/ toilet		1,000	975	966	
Primary Classroom - 2nd Gr.		1,000	975	975	
Primary Classroom - 2nd Gr.		1,000	975	975	
Primary Classroom - 2nd Gr.		1,000	975	975	
Primary Classroom - 2nd Gr.		1,000	975	975	
Primary Classroom - 3rd Gr.		1,000	950	920	Lockers in the hallway
Primary Classroom - 3rd Gr.		1,000	950	910	Lockers in the hallway
Primary Classroom - 3rd Gr.	9,425	1,000	950	927	Intermediate to Primary, Lockers in the hallway
Primary Classroom - 3rd Gr.		1,000	950	927	Intermediate to Primary, Lockers in the hallway
Intermediate Classroom - 4th Gr.		1,000	950	927	Lockers in the hallway
Intermediate Classroom - 4th Gr.		1,000	950	927	Lockers in the hallway
Intermediate Classroom - 4th Gr.		1,000	950	927	Lockers in the hallway
Intermediate Classroom - 4th Gr.		1,000	950	927	Lockers in the hallway
Intermediate Classroom - 5th Gr.		1,000	950	927	Lockers in the hallway
Intermediate Classroom - 5th Gr.		1,000	950	927	Lockers in the hallway
Intermediate Classroom - 5th Gr.		1,000	950	927	Lockers in the hallway
Intermediate Classroom - 5th Gr.		1,000	950	919	Lockers in the hallway
Lockers & Hallway Breakout Areas			1,000	0	Area included in corridor sq ft.
Instructional Support Conference		165	165	215	
Art Activity Lab (includes lab & storage)	973	1,500	1,500	1,492	
<b>Subtotal Classroom Instruction</b>	<b>23,782</b>	<b>26,665</b>	<b>26,665</b>	<b>25,128</b>	
<b>IMC</b>					
Teaching Stations (2) and Stacks	2,520	2,465	2,465	2,609	
Technology Lab	364	750	750	754	
Library Office/Workroom	366	150	150	180	
AV & Periodical Storage		225	225	250	
Computer Equipment Room		150	150	156	
<b>Subtotal IMC</b>	<b>3,250</b>	<b>3,740</b>	<b>3,740</b>	<b>3,949</b>	

**SPACE SUMMARY**  
**Supplemental Ed Spec**

**ATTACHMENT B**  
**Sand Lake Elementary School**  
**Revision Architecture - December 23, 2008**

	Exist. Sand Lake	Ed Spec - 26 CR	Approved Suppl. Ed. Spec - 26 CR	Proposed Design- 26 CR	Remarks
<b>PROGRAM SPACES</b>	SQ FT	SQ FT	SQ FT	SQ FT	
<b>Special Education</b>					
Resource Classroom	736	1,000	1,000	975	
Resource Classroom		1,000	1,000	975	
Occupational/Physical Therapy (OT/PT)		370	0	0	Program uses platform
OT/PT Storage			50	54	
Speech Therapy		150	300	295	
<b>Subtotal Special Education</b>	<b>736</b>	<b>2,520</b>	<b>2,350</b>	<b>2,299</b>	
<b>Food Service</b>					
Food Service	338	550	600	671	Additional storage needs
<b>Subtotal Food Service</b>	<b>338</b>	<b>550</b>	<b>600</b>	<b>671</b>	
<b>Music</b>					
Music Performing Classroom		950	950	1,051	
Music Office	98	175	0	0	
Music Storage	54	100	200	67	Additional casework storage in classroom
<b>Subtotal Music</b>	<b>152</b>	<b>1,225</b>	<b>1,150</b>	<b>1,118</b>	
<b>Multi-purpose Room</b>					
Multi-purpose Room	3,076	2,500	2,500	2,395	
Table/Chair/Riser Storage	259	400	400	323	
Stage/Platform	819	0	600	529	
Campfire Kitchenette & Storage			50	117	Community after-school program
<b>Subtotal Multi-purpose</b>	<b>4,154</b>	<b>2,900</b>	<b>3,550</b>	<b>3,364</b>	
<b>Physical Education</b>					
Gym	3,943	3,475	3,945	4,038	Existing
P.E. Office/Storage	464	500	465	464	Existing
<b>Subtotal Multi-purpose &amp; P.E.</b>	<b>4,407</b>	<b>3,975</b>	<b>4,410</b>	<b>4,502</b>	
<b>Custodial &amp; Restrooms</b>					
Custodial and Receiving (1 main & 2 small)	269	400		0	
Receiving			200	193	
Custodial Storage			150	100	
Custodial Closet			60	51	
Custodial Closet			60	51	
Custodial - BPO			100	234	
Outdoor Equipment Storage			100	96	
Laundry/Changing			80	0	part of Custodial/BPO
Public Restrooms	1,653	870	1,200	1,347	
Central Building Storage	1,046	540	540	845	Increased due to immersion program
<b>Subtotal Custodial &amp; Restrooms</b>	<b>2,968</b>	<b>1,810</b>	<b>2,490</b>	<b>2,917</b>	
<b>Circulation/Support</b>					
Hallways	10,254	8,050	8,600	10,124	Increased due to renovation
Mechanical and Electrical Spaces	2,326	870	3,690	3,076	
Exterior Walls	969	745	880	1,167	Increased due to renovation and two stories
<b>Subtotal Support</b>	<b>13,549</b>	<b>9,665</b>	<b>13,170</b>	<b>14,367</b>	
	<b>56,318</b>	<b>56,900</b>	<b>62,500</b>	<b>62,908</b>	

**Total Program Square Footage**

4 Relocatable Classrooms required to house 6th grade

\*