

APPENDIX B

Appendix B is a compilation of tables and graphs that supplement or expound on the information provided in the body of this document.

Table 29**Elementary Zone Exceptions**

School Name	Membership		
	9/30/03	Transferred In*	Transferred Out*
Abbott Loop	439	62	79
Airport Heights	258	32	62
Alpenglow	438	27	61
Aurora	420	54	15
Baxter	409	92	104
Bayshore	592	50	88
Bear Valley	515	30	100
Birchwood ABC K-6	332	151	44
Bowman, Willard	520	88	44
Campbell	508	25	110
Chester Valley	257	34	84
Chinook	550	70	193
Chugach Optional	235	211	1
Chugiak Elementary	490	89	77
College Gate	372	32	75
Creekside Park	441	45	66
Denali	449	342	11
Eagle River	379	45	94
Fairview	440	47	73
Fire Lake	275	18	104
Girdwood K-8	174	2	3
Government Hill	478	321	20
Homestead	434	72	83
Huffman	475	52	95
Inlet View	262	44	129
Kasuun	482	37	107
Kincaid	533	85	99
Klatt	408	18	114
Lake Hood	448	83	67
Lake Otis	440	66	89
Mount Spurr	312	13	34
Mountain View	410	26	68
Muldoon	457	50	100
North Star	449	112	74
Northern Lights ABC K-8	612	597	0
Northwood	321	25	79
Nunaka Valley	286	56	65
Ocean View	558	38	93
O'Malley	330	11	101
Orion	373	23	12
Polaris K-6	228	97	2
Ptarmigan	410	27	105
Rabbit Creek	372	27	94
Ravenwood	433	25	96
Rogers Park	523	20	68

Table 29**Elementary Zone Exceptions**

School Name	Membership		
	9/30/03	Transferred In*	Transferred Out*
Russian Jack	364	47	53
Sand Lake	637	271	85
Scenic Park	523	42	117
Spring Hill	425	26	64
Susitna	574	94	67
Taku	400	26	130
Trailside	519	53	76
Tudor	514	49	133
Turnagain	321	20	154
Tyson, William	451	55	55
Ursa Major	374	29	21
Ursa Minor	230	30	8
Williwaw	581	61	95
Willow Crest	441	64	89
Wonder Park	386	37	90
Wood, Gladys	484	78	137
"blank"			3
Regular Subtotals	25,751	4,453	4,659
Charter Schools**	733	54	1
Whaley Elementary		7	
Elementary Totals	26,484	4,514	4,660

**Includes Aquarian Charter (K-6), Family Partnership Charter (K-6), Frontier (K-6) and Village Charter (K-8)

Note: 1) Zone exception data as of 01/23/2004

- 2) Student membership includes preschool and level 3 special ed students.
- 3) Data provided by ASD Department of Information Technology.

Table 30

Middle School Zone Exceptions

School Name	Membership		
	9/30/03	Transferred In*	Transferred Out*
Central Middle School	790	134	6
Clark Middle School	944	2	77
Goldenview Middle School	929	98	34
Gruening Middle School	609	8	28
Hanshaw Middle School	992	20	142
Mears Middle School	1,104	11	40
Mirror Lake Middle School	674	72	9
Romig Middle School	842	42	47
Wendler Middle School	840	31	97
From Elementary schools		9	
Middle School Totals	7,724	427	480

*Zone exception data as of 01/23/2004

Note: Data provided by ASD Department of Information Technology.

Table 31**High School Zone Exceptions**

School Name	Membership		
	9/30/03	Transferred In*	Transferred Out*
Bartlett High School	2,025	85	90
Chugiak High School	2,025	11	40
Dimond High School	2,314	20	53
East High School	2,246	99	116
Family Partnership Secondary	291	3	1
SAVE I	213	10	0
Service High School	2,473	22	71
Steller Secondary	294	278	
West High School	1,823	128	32
McLaughlin Secondary	146	0	0
Benson Secondary	218	10	0
Benson SEARCH	97	2	0
AVAIL	63	4	0
Whaley Secondary	98	1	
Polaris 7-12	232	47	0
From Middle Schools			20
High School Totals	14,558	720	423

*Zone exception data as of 01/23/2004

Note: Data provided by ASD Department of Information Technology.

Table 32

**ELEMENTARY STUDENT POPULATION MOBILITY BY SCHOOLS
2002-2003 SCHOOL YEAR**

School Name	Membership Sept. 30, 2002	New Enrollment	Withdrawals	Transfers		Total Mobility	Percent Mobility 2002-03
				Out	In		
Abbott Loop	441	105	3	23	32	163	37.0
Airport Heights	276	49	1	15	27	92	33.3
Alpenglow	464	111	1	33	16	161	34.7
Aquarian Charter	228	64		18	29	111	48.7
Aurora	405	137		64	21	222	54.8
Baxter	437	62	1	14	28	105	24.0
Bayshore	563	109		20	33	162	28.8
Bear Valley	512	94		25	10	129	25.2
Birchwood ABC K-6	318	59		12	16	87	27.4
Bowman, Willard	541	106	1	23	24	154	28.5
Campbell	512	107	8	21	21	157	30.7
Chester Valley	311	128	5	19	36	188	60.5
Chinook	557	128	6	42	51	227	40.8
Chugach Optional	239	23		3		26	10.9
Chugiak Elementary	495	97		23	9	129	26.1
College Gate	391	67	7	28	23	125	32.0
Creekside Park	467	119	2	45	42	208	44.5
Denali	373	71	6	21	27	125	33.5
Eagle River	396	116	7	24	21	168	42.4
Fairview	477	107	9	60	71	247	51.8
Family Partnership	333	66	7	35	5	113	33.9
Fire Lake	286	87	3	36	18	144	50.3
Girdwood K-8	165	36		8	8	52	31.5
Government Hill	494	102	5	25	12	144	29.1
Homestead	437	93		16	19	128	29.3
Huffman	483	88		29	6	123	25.5
Inlet View	255	69	4	21	24	118	46.3
Kasuun	527	101		19	23	143	27.1
Kincaid	533	91	1	15	19	126	23.6
Klatt	426	74	4	27	43	148	34.7
Lake Hood	474	84	8	34	36	162	34.2
Lake Otis	433	103	5	33	40	181	41.8
Mount Spurr	462	151	4	45	13	213	46.1
Mountain View	321	103	27	35	62	227	70.7
Muldoon	498	122	17	44	50	233	46.8
North Star	519	151	20	66	89	326	62.8
Northern Lights ABC K-8	621	74		7	12	93	15.0
Northwood	340	84		28	36	148	43.5
Nunaka Valley	329	87	2	17	33	139	42.2
Ocean View	573	107	5	32	33	177	30.9
O'Malley	344	65		10	14	89	25.9
Orion	314	131	1	59	56	247	78.7
Polaris K-6	218	30	2	7	9	48	22.0
Ptarmigan	367	27	7	31	42	107	29.2

Table 32**ELEMENTARY STUDENT POPULATION MOBILITY BY SCHOOLS
2002-2003 SCHOOL YEAR**

School Name	Membership Sept. 30, 2002	New Enrollment	Withdrawals	Transfers		Total Mobility	Percent Mobility 2002-03
				Out	In		
Rabbit Creek	395	76		16	8	100	25.3
Ravenwood	441	109		25	21	155	35.1
Rogers Park	530	90	7	31	45	173	32.6
Russian Jack	417	101	1	39	37	178	42.7
Sand Lake	619	112	4	32	21	169	27.3
Scenic Park	539	93	8	16	48	165	30.6
Spring Hill	405	87	4	25	27	143	35.3
Susitna	568	123		47	34	204	35.9
Taku	417	118	8	42	61	229	54.9
Trailside	514	104		13	17	134	26.1
Tudor	550	115	8	37	49	209	38.0
Turnagain	343	104	2	15	38	159	46.4
Tyson, William	442	137	16	23	69	245	55.4
Ursa Major	402	146		75	11	232	57.7
Ursa Minor	269	104		45	3	152	56.5
Village Charter	183	68		18	10	96	52.5
Williwaw	560	141	1	49	69	260	46.4
Willow Crest	455	119	9	39	59	226	49.7
Wonder Park	448	84	5	33	55	177	39.5
Wood, Gladys	490	97	3	26	30	156	31.8
TOTAL	27,142	6,113	255	1,858	1,951	10,177	37.5

Note: Membership includes preschool and level 3 special ed students.

Table 33

**SECONDARY STUDENT POPULATION MOBILITY BY SCHOOLS
2002-2003 SCHOOL YEAR**

School Name	Membership Sept. 30, 2002	New Enrollment	Withdrawals	Transfers		Total Mobility	Percent Mobility 2002-03
				Out	In		
Central	776	110	10	79	38	237	30.5
Clark	977	75	51	74	86	286	29.3
Goldenview	941	55	8	38	21	122	13.0
Gruening	635	52	1	29	18	100	15.7
Hanshew	963	78	5	62	60	205	21.3
Mears	1,069	55	19	58	53	185	17.3
Mirror Lake	685	38	7	40	23	108	15.8
Romig	838	57	21	68	62	208	24.8
Wendler	933	54	13	72	70	209	22.4
Bartlett	2,072	196	155	190	123	664	32.0
Chugiak	2,032	114	99	120	43	376	18.5
Dimond	2,331	111	190	110	137	548	23.5
East	2,254	173	293	163	191	820	36.4
Service	2,453	102	86	90	82	360	14.7
West	1,898	145	226	169	169	709	37.4
AVAIL	60	20	91	28	39	178	296.7
Benson SAVE	217	6	131	21	127	285	131.3
Benson SEARCH	93	2	110	7	142	261	280.6
Continuation Program*	14	2	22	2	24	50	357.1
Family Partnership	316	36	18	28	19	101	32.0
KCC Part-time Students	9	2	20	1	22	45	500.0
McLaughlin	196	63	177	72	220	532	271.4
Polaris (7-12)	229	9	5	4	1	19	8.3
SAVE I	228	7	210	17	161	395	173.2
Steller (7-12)	296	5	3	5		13	4.4
TOTAL	22,515	1,567	1,971	1,547	1,931	7,016	31.2

*Continuation Program data as of 2/17/03

Note: Membership includes level 3 special ed students.

Chart 1

Student Membership
September 30 Actual Enrollment
25 Year History

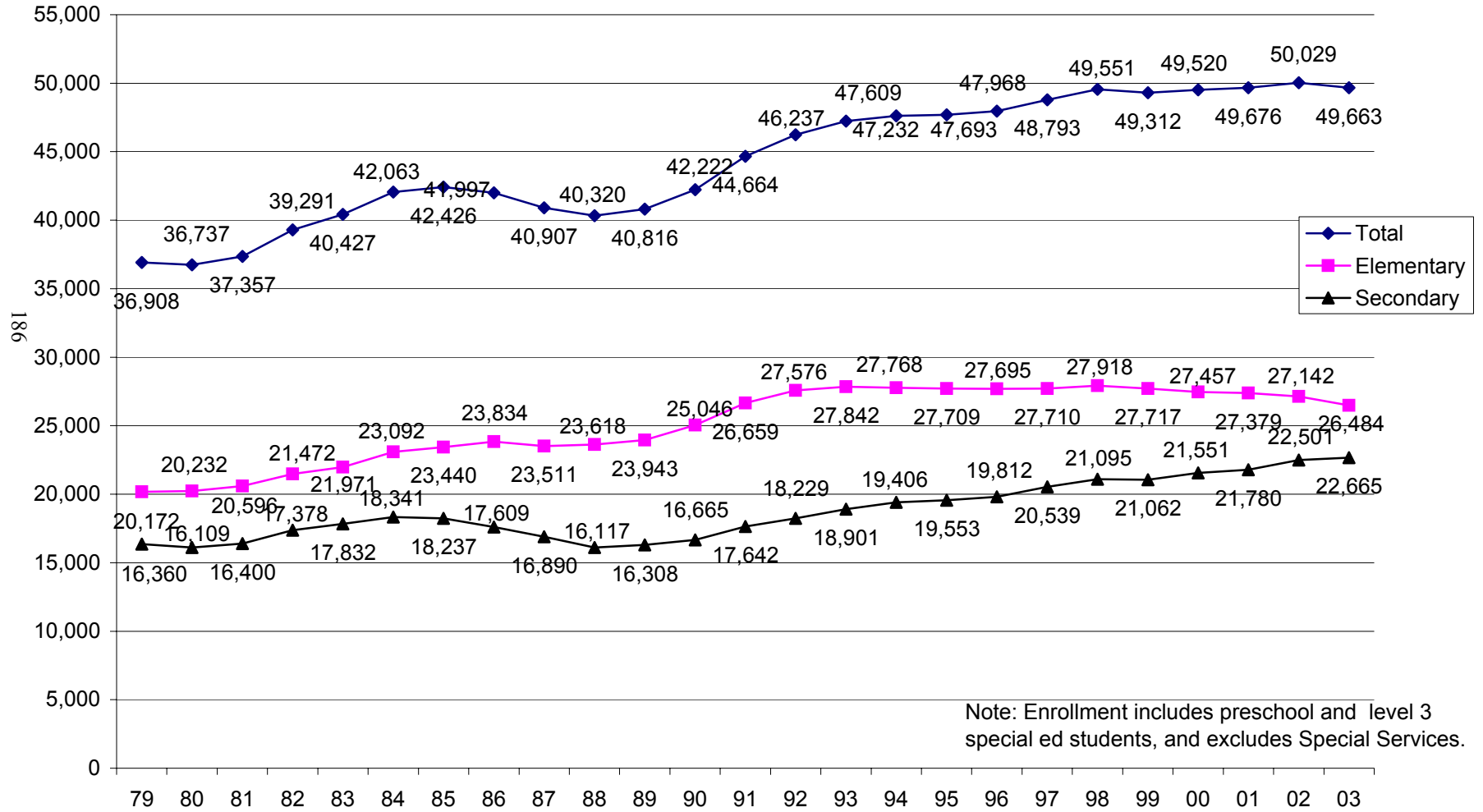
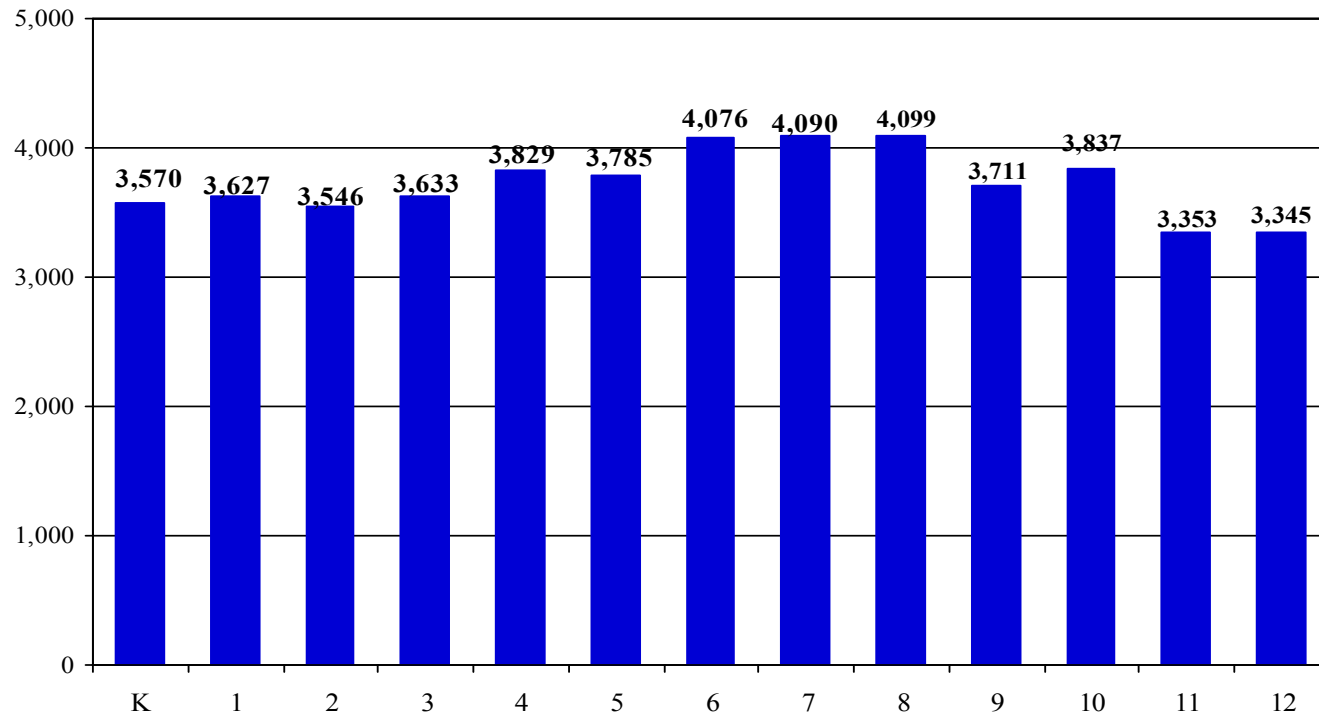


Chart 2

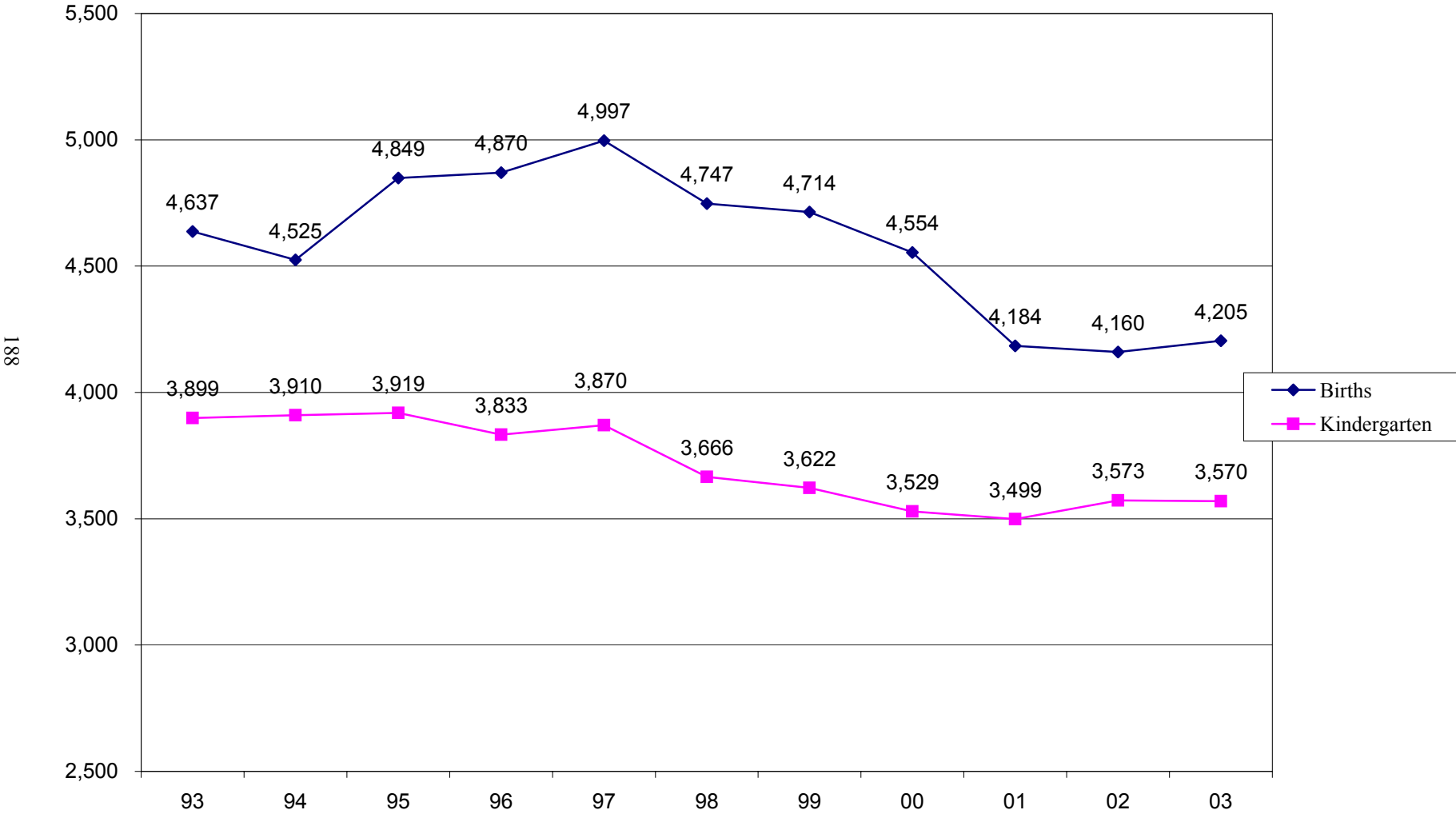
Grades K-12 Membership September 30, 2003



Note:
Special Services membership not included in grade levels .

Chart 3

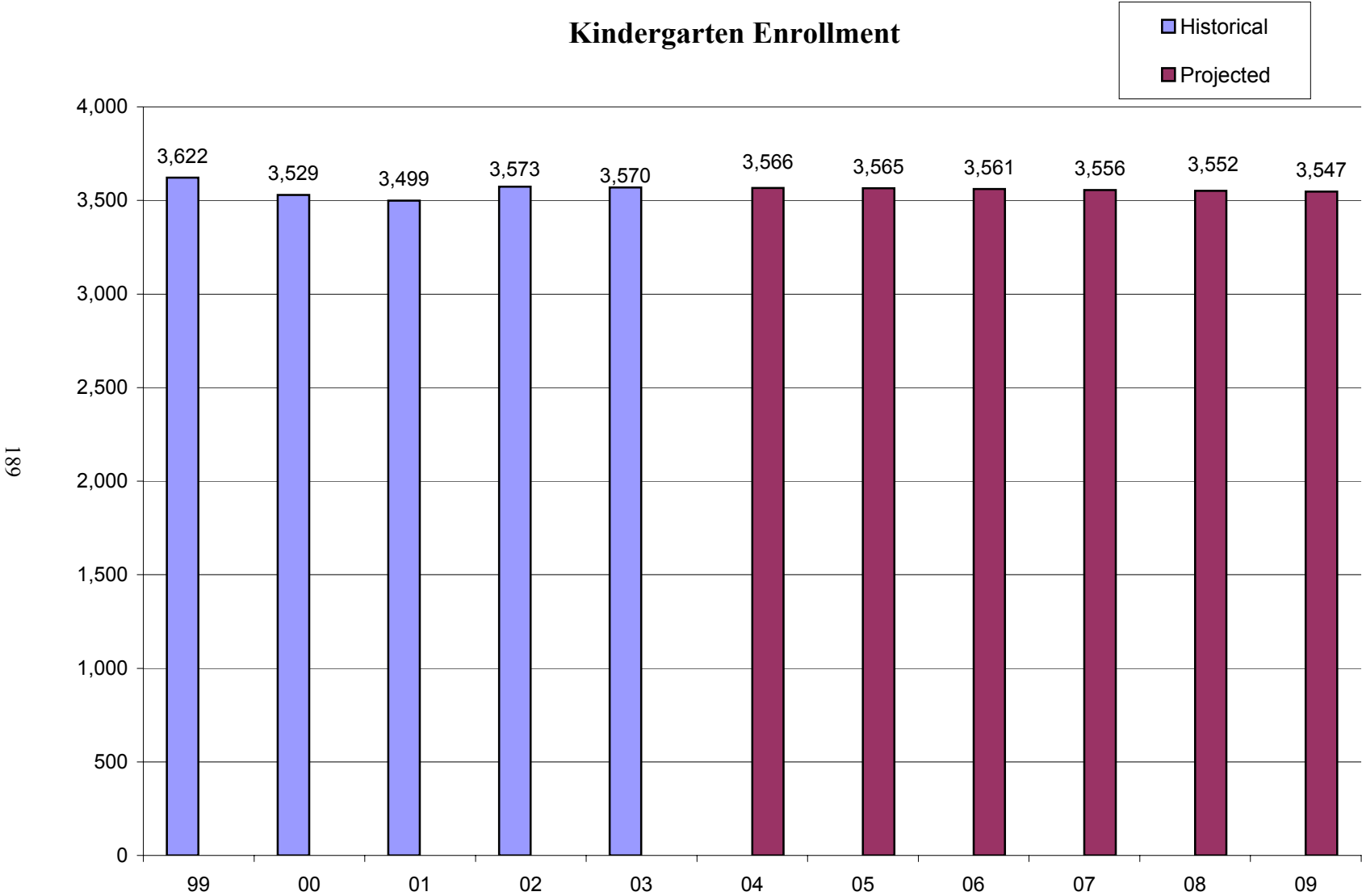
Ten Year History of Births and Kindergarten Enrollment



Note: Numbers do not include level 3 special ed students.

Chart 4

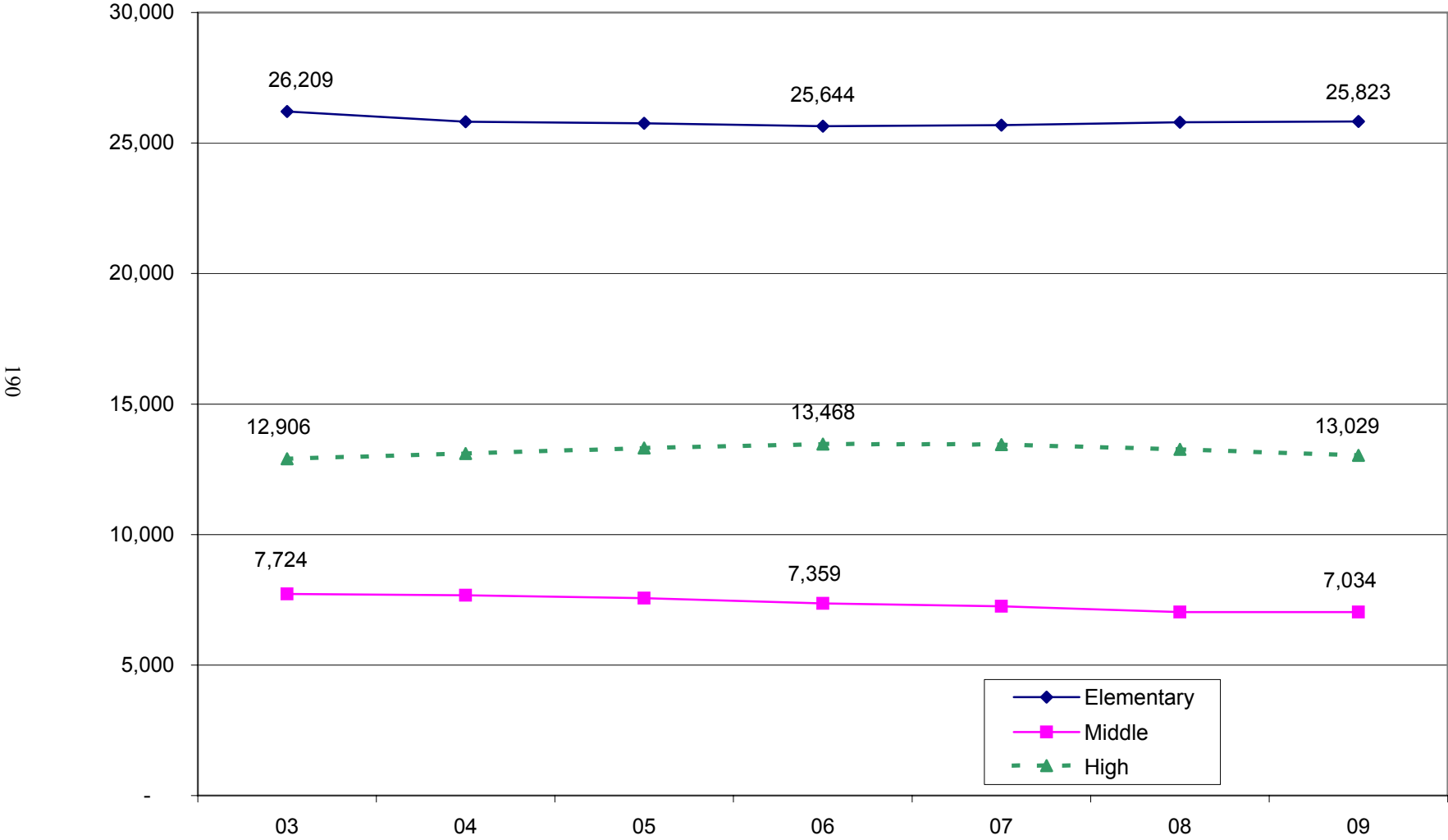
Kindergarten Enrollment



Note: Numbers do not include level 3 special ed students.

Chart 5

Elementary, Middle, And High School Membership Projections



Note: Numbers include level 3 special ed students, but does not include preschool students.

Chart 6

Projected Total Membership 2004-2009

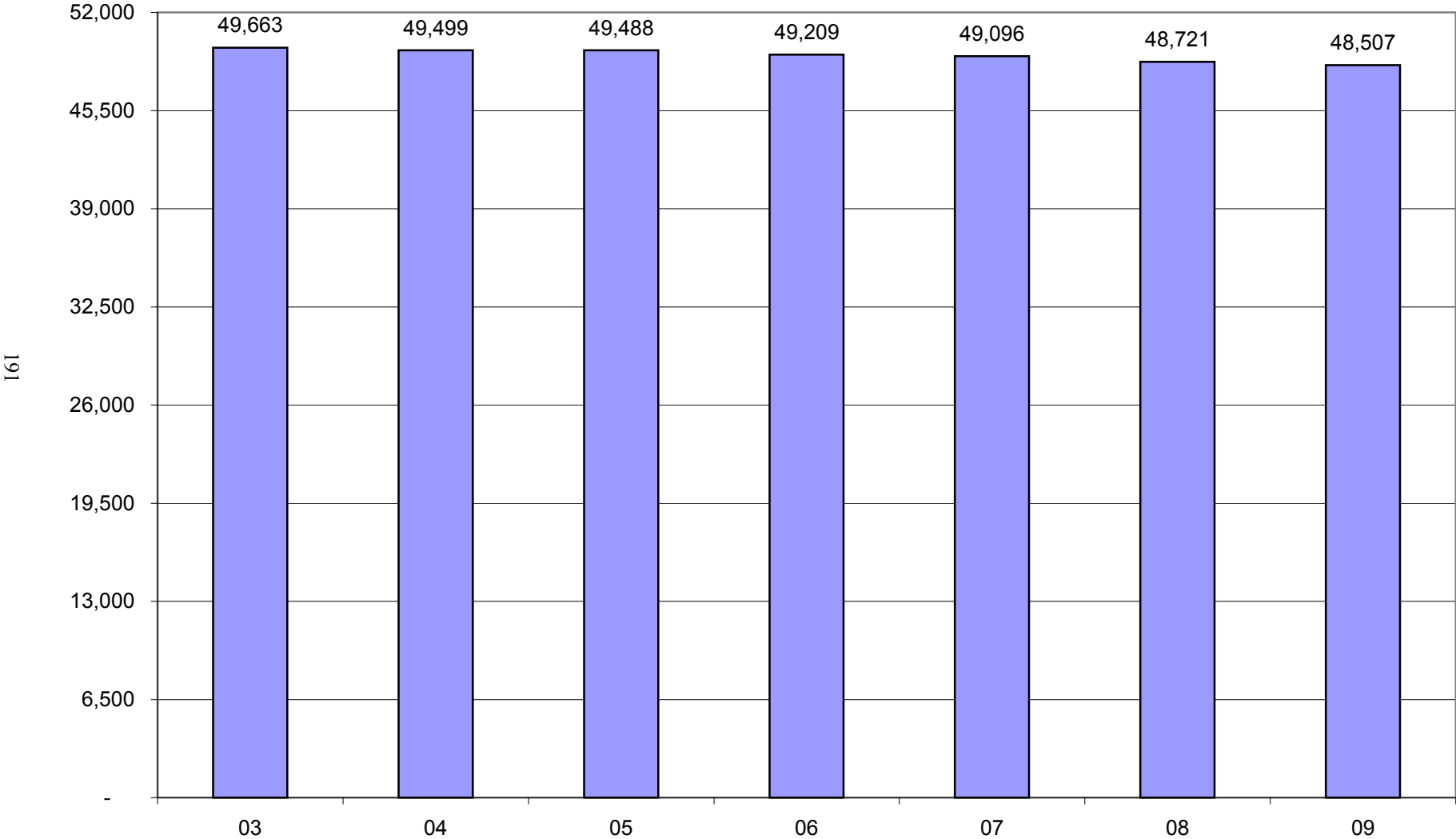


Chart 7

White and Ethnic Minority Populations Membership History

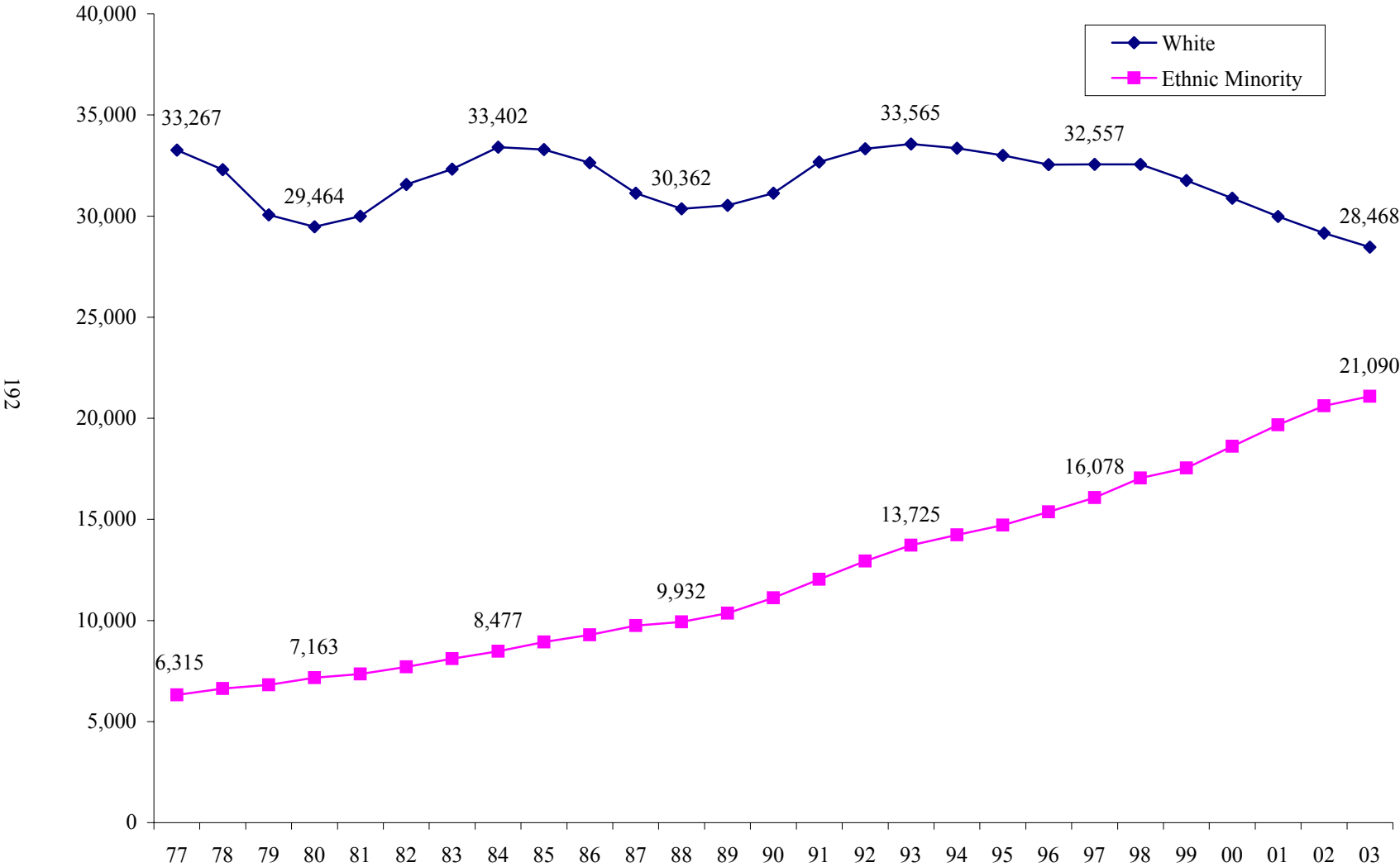


Chart 8

**Student Mobility
2001-02 and 2002-03**

