

ANCHORAGE SCHOOL DISTRICT  
ANCHORAGE, ALASKA

ASD MEMORANDUM #120 (2009-2010)

November 23, 2009

TO: SCHOOL BOARD

FROM: OFFICE OF THE SUPERINTENDENT

SUBJECT: 2009-2010 ETHNICITY REPORT

ASD Goal: *Ensure public accountability through effective communication with students, staff, parents, community and government at all levels.*

PERTINENT FACTS:

Today 52% of the students in the Anchorage School District are ethnically diverse, compared to 13% in 1976. Of today's diverse population, the Asian/Pacific Islander category (14%) is the largest, followed by the multi-ethnic (13%), Hispanic (10%), Alaska Native/American Indian (9%), and African American/Black (6%) groups – see Chart 1 in the attached Ethnicity Report. Last year, the multi-ethnic and Asian/Pacific Islander categories were the largest (13% each) followed by Hispanic. The following table compares 2008-09 and 2009-10:

**Race/Ethnicity Comparison: 2008-09 and 2009-10**

<b>Race/Ethnicity</b>	<b>2008-09</b>	<b>2009-10</b>
<b>White</b>	<b>49%</b>	<b>48%</b>
African American or Black	6%	6%
Alaska Native or American Indian	9%	9%
Asian or Pacific Islander	13%	14%
Hispanic	10%	10%
Multi-Ethnic	13%	13%
<b>Total Ethnically Diverse</b>	<b>51%</b>	<b>52%</b>

Comparing 2008 and 2009, the ethnically diverse student population has increased by 1% and the White student population has decreased by 1%. These changes are shown in the Historical Student Membership Composition graph (Chart 2). Looking at student numbers, the White student group decreased by 89 students this year when compared to last year, while the ethnically diverse group increased by 1,053 students. The largest numerical gain in an ethnic

category this year, over last year, was in Asian/Pacific Islander, which increased by 713 students.

It should be noted that in 2007 all students and staff were asked to re-identify themselves, racially, using the new categories developed, and required, by the federal government. Students were asked to do two things: 1) identify whether or not they were Hispanic, and 2) to select the categories which described their race/ethnicity (more than one could be selected). This is very different from what was allowed in the past. Prior to 2007, students were given a list of racial/ethnic categories and allowed to choose the one which best described their race/ethnicity.

Guidance from the Alaska Department of Education and Early Development was used to interpret responses to the two questions. Students who indicated they were Hispanic were given that as their racial/ethnic category. Students who made more than one selection were placed in the multi-ethnic category. Students who selected one category were placed in that particular racial/ethnic category.

While the new method of identification is welcomed as a means of accurately describing ethnicity, the way it is reported can have some negative impacts. For instance, numbers in the new categories can show under-representation of some groups. Decisions based on numbers in the new categories can be flawed. In addition, numbers can be misinterpreted if compared with prior years.

Chart 3 shows student ethnicity or race by program type. At 59%, Special Services program has the largest population of ethnically diverse students, followed by Elementary Education at 55%, 54% of Middle School students, 49% of High School, 43% of Alternative schools, and 34% of Charter school programs. The diversity at the secondary levels continues to increase as the more diverse elementary students move into these levels.

The attached Ethnicity Report lists student information in summary, by program type, and by school. The series of tables and graphs represent membership numbers as of October 30, 2009.

Attachment

CC/MKA/RA/MP/ODS

Prepared by: Ophelia Dargan-Steed, Demographics Manager  
Mike Price, Construction Manager  
Ray Amsden, Director of Facilities

Approved by: Michael K. Abbott, Assistant Superintendent of Support Services

## Anchorage School District

### Ethnicity Report October 2009

School Year	White	African American or Black	Alaska Native or American Indian	Asian or Pacific Islander	Hispanic	Multi- Ethnic	Total Diverse	School Totals
1999 - 00	31,759 65%	4,263 9%	5,950 12%	4,460 9%	2,665 5%	197 0%	17,535 36%	49,294
2000 - 01	30,886 64%	4,227 9%	6,177 13%	4,760 10%	2,754 6%	695 1%	18,613 38%	49,499
2001 - 02	29,978 60%	4,234 9%	6,267 13%	5,038 10%	2,897 6%	1,241 2%	19,677 40%	49,655
2002 - 03	29,157 59%	4,196 8%	6,366 13%	5,311 11%	3,041 6%	1,702 3%	20,616 41%	49,773
2003 - 04	28,468 57%	4,057 8%	6,524 13%	5,335 11%	3,050 6%	2,124 4%	21,090 43%	49,558
2004 - 05	27,764 56%	3,930 8%	6,520 13%	5,385 11%	3,107 6%	2,773 6%	21,715 44%	49,479
2005 - 06	27,212 55%	3,836 8%	6,537 13%	5,458 11%	3,169 6%	3,334 7%	22,334 45%	49,546
2006 - 07	26,294 54%	3,655 7%	6,600 13%	5,484 11%	3,077 6%	3,876 8%	22,692 46%	48,986
2007 - 08	24,185 50%	2,974 6%	4,288 9%	5,868 12%	4,961 10%	6,144 13%	24,235 50%	48,420

## Anchorage School District

### Ethnicity Report October 2009

School Year	White	African American or Black	Alaska Native or American Indian	Asian or Pacific Islander	Hispanic	Multi- Ethnic	Total Diverse	School Totals
2008 - 09	23,864 49%	2,914 6%	4,168 9%	6,289 13%	4,927 10%	6,254 13%	24,552 51%	48,416
2009 - 10	23,775 48%	3,100 6%	4,440 9%	7,002 14%	4,867 10%	6,196 13%	25,605 52%	49,380
<b>Change 2008 =&gt; 2009</b>	<b>-89</b>	<b>186</b>	<b>272</b>	<b>713</b>	<b>-60</b>	<b>-58</b>	<b>1,053</b>	<b>964</b>
<b>Change 1999 =&gt; 2009</b>	<b>-7,984</b>	<b>-1,163</b>	<b>-1,510</b>	<b>2,542</b>	<b>2,202</b>	<b>5,999</b>	<b>8,070</b>	<b>86</b>
<b>Percent Change Last Ten Years</b>	<b>-25%</b>	<b>-27%</b>	<b>-25%</b>	<b>57%</b>	<b>83%</b>		<b>46%</b>	<b>0%</b>

Note: 1) Report does not include non-special education preschool students.  
 2) In the 2005-06 school year the ethnic/racial category "Other" was changed to "Multi-Ethnic."  
 3) In the 2007-08 school year the ethnic/racial categories were redefined by the federal government.

## Anchorage School District

### Ethnicity Report October 2009

Type of Program	White	African American or Black	Alaska Native or American Indian	Asian or Pacific Islander	Hispanic	Multi- Ethnic	Total Diverse	School Totals
ELEMENTARY	10,978 45%	1,523 6%	2,259 9%	3,528 15%	2,603 11%	3,398 14%	13,311 55%	24,289
MIDDLE SCHOOL	3,427 46%	511 7%	718 10%	1,192 16%	739 10%	935 12%	4,095 54%	7,522
HIGH SCHOOL	6,758 51%	864 7%	996 8%	2,054 16%	1,202 9%	1,350 10%	6,466 49%	13,224
ALTERNATIVE	839 57%	80 5%	128 9%	127 9%	105 7%	183 13%	623 43%	1,462
CHARTER	1,554 66%	77 3%	227 10%	70 3%	167 7%	253 11%	794 34%	2,348
SPECIAL SERVICES	219 41%	45 8%	112 21%	31 6%	51 10%	77 14%	316 59%	535
<b>DISTRICT TOTALS</b>	<b>23,775 48%</b>	<b>3,100 6%</b>	<b>4,440 9%</b>	<b>7,002 14%</b>	<b>4,867 10%</b>	<b>6,196 13%</b>	<b>25,605 52%</b>	<b>49,380</b>

## Anchorage School District

### Ethnicity Report October 2009

		Alaska							
School	White	African American or Black	Native or American Indian	Asian or Pacific Islander	Hispanic	Multi- Ethnic	Total Diverse	Total	
100	Abbott Loop	109 25%	28 6%	56 13%	98 23%	59 14%	85 20%	326 75%	435
110	Airport Heights	49 15%	18 6%	77 24%	81 25%	47 14%	55 17%	278 85%	327
112	Alpenglow	396 74%	17 3%	6 1%	11 2%	58 11%	46 9%	138 26%	534
114	Aurora	256 64%	47 12%	0%	13 3%	47 12%	34 9%	141 36%	397
115	Baxter	154 41%	27 7%	49 13%	35 9%	40 11%	69 18%	220 59%	374
116	Bayshore	277 53%	13 3%	29 6%	95 18%	44 8%	61 12%	242 47%	519
118	Bear Valley	348 79%	6 1%	14 3%	18 4%	21 5%	35 8%	94 21%	442
120	Birchwood ABC	254 80%	6 2%	15 5%	3 1%	24 8%	17 5%	65 20%	319
125	Bowman	273 58%	9 2%	46 10%	39 8%	36 8%	71 15%	201 42%	474
130	Campbell	164 38%	14 3%	48 11%	59 14%	55 13%	89 21%	265 62%	429

## Anchorage School District

### Ethnicity Report October 2009

		Alaska							
School	White	African American or Black	Native or American Indian	Asian or Pacific Islander	Hispanic	Multi- Ethnic	Total Diverse	Total	
140	Chester Valley	71 35%	21 10%	17 8%	20 10%	19 9%	53 26%	130 65%	201
150	Chinook	174 33%	24 5%	70 13%	115 22%	50 10%	91 17%	350 67%	524
160	Chugach Optional	211 82%	2 1%	3 1%	9 4%	10 4%	22 9%	46 18%	257
170	Chugiak	347 75%	1 0%	31 7%	8 2%	40 9%	33 7%	113 25%	460
174	College Gate	129 32%	31 8%	64 16%	61 15%	42 10%	82 20%	280 68%	409
180	Creekside Park	96 24%	55 14%	40 10%	89 22%	42 11%	77 19%	303 76%	399
190	Denali Montessori	220 55%	28 7%	46 11%	31 8%	24 6%	52 13%	181 45%	401
200	Eagle River	241 64%	6 2%	25 7%	5 1%	37 10%	65 17%	138 36%	379
210	Fairview	48 11%	116 26%	41 9%	133 30%	65 15%	43 10%	398 89%	446
215	Fire Lake	208 58%	3 1%	35 10%	22 6%	33 9%	58 16%	151 42%	359

## Anchorage School District

### Ethnicity Report October 2009

		Alaska							
School	White	African American or Black	Native or American Indian	Asian or Pacific Islander	Hispanic	Multi- Ethnic	Total Diverse	Total	
220	Girdwood K-8	140 90%	0%	3 2%	4 3%	6 4%	3 2%	16 10%	156
418	Gladys Wood	202 44%	21 5%	48 10%	59 13%	44 10%	84 18%	256 56%	458
230	Government Hill	116 25%	32 7%	16 3%	49 10%	231 49%	29 6%	357 75%	473
235	Homestead	246 75%	5 2%	18 5%	8 2%	17 5%	35 11%	83 25%	329
237	Huffman	276 72%	9 2%	14 4%	26 7%	21 5%	40 10%	110 28%	386
240	Inlet View	127 56%	11 5%	14 6%	25 11%	17 8%	31 14%	98 44%	225
242	Kasuun	212 46%	18 4%	36 8%	63 14%	53 11%	83 18%	253 54%	465
245	Klatt	113 32%	4 1%	44 12%	75 21%	73 21%	45 13%	241 68%	354
246	Kincaid	314 65%	10 2%	47 10%	36 7%	22 5%	56 12%	171 35%	485
248	Lake Hood	119 30%	12 3%	39 10%	127 32%	47 12%	57 14%	282 70%	401

## Anchorage School District

### Ethnicity Report October 2009

		Alaska							
School	White	African American or Black	Native or American Indian	Asian or Pacific Islander	Hispanic	Multi- Ethnic	Total Diverse	Total	
250	Lake Otis	113 26%	32 7%	83 19%	83 19%	58 13%	69 16%	325 74%	438
257	Mt. Spurr	206 67%	21 7%	0 0%	8 3%	36 12%	36 12%	101 33%	307
260	Mountain View	50 13%	45 11%	67 17%	135 34%	48 12%	53 13%	348 87%	398
270	Muldoon	83 19%	49 11%	49 11%	157 36%	33 8%	65 15%	353 81%	436
280	North Star	75 18%	37 9%	51 12%	112 26%	78 18%	75 18%	353 82%	428
290	Northern Lights ABC	311 50%	26 4%	28 4%	138 22%	52 8%	71 11%	315 50%	626
300	Northwood ABC	107 30%	17 5%	44 12%	85 23%	39 11%	70 19%	255 70%	362
310	Nunaka Valley	84 31%	25 9%	44 16%	28 10%	33 12%	60 22%	190 69%	274
315	Ocean View	239 56%	15 3%	48 11%	19 4%	35 8%	74 17%	191 44%	430
320	O'Malley	266 80%	4 1%	12 4%	2 1%	19 6%	28 8%	65 20%	331

## Anchorage School District

### Ethnicity Report October 2009

		Alaska							
School	White	African American or Black	Native or American Indian	Asian or Pacific Islander	Hispanic	Multi- Ethnic	Total Diverse	Total	
324	Orion	306 69%	42 9%	6 1%	14 3%	41 9%	36 8%	139 31%	445
328	Ptarmigan	117 27%	66 15%	68 16%	72 17%	61 14%	52 12%	319 73%	436
330	Rabbit Creek	293 69%	9 2%	42 10%	14 3%	28 7%	39 9%	132 31%	425
335	Ravenwood	316 77%	7 2%	16 4%	12 3%	34 8%	28 7%	97 23%	413
340	Rogers Park	250 50%	25 5%	50 10%	67 14%	36 7%	68 14%	246 50%	496
345	Russian Jack	54 15%	36 10%	55 15%	84 23%	48 13%	82 23%	305 85%	359
350	Sand Lake	315 47%	15 2%	61 9%	111 17%	40 6%	129 19%	356 53%	671
360	Scenic Park	155 41%	43 11%	25 7%	48 13%	29 8%	82 21%	227 59%	382
362	Spring Hill	117 34%	14 4%	55 16%	62 18%	42 12%	56 16%	229 66%	346
364	Susitna	175 38%	44 10%	62 14%	52 11%	42 9%	80 18%	280 62%	455

## Anchorage School District

### Ethnicity Report October 2009

		Alaska							
School	White	African American or Black	Native or American Indian	Asian or Pacific Islander	Hispanic	Multi- Ethnic	Total Diverse	Total	
365	Taku	140 34%	32 8%	48 12%	64 16%	51 13%	72 18%	267 66%	407
363	Trailside	287 58%	27 5%	49 10%	38 8%	36 7%	55 11%	205 42%	492
370	Tudor	130 35%	22 6%	32 9%	65 18%	57 16%	61 17%	237 65%	367
380	Turnagain	245 55%	11 2%	39 9%	46 10%	23 5%	78 18%	197 45%	442
384	Tyson	37 7%	44 9%	68 14%	259 52%	31 6%	62 12%	464 93%	501
386	Ursa Major	250 53%	97 21%	12 3%	8 2%	81 17%	22 5%	220 47%	470
388	Ursa Minor	177 58%	52 17%	7 2%	12 4%	37 12%	18 6%	126 42%	303
390	Williwaw	35 10%	34 9%	42 11%	174 47%	37 10%	46 13%	333 90%	368
400	Willow Crest	95 25%	14 4%	72 19%	77 20%	60 16%	69 18%	292 75%	387
410	Wonder Park	60 22%	24 9%	33 12%	65 23%	34 12%	61 22%	217 78%	277

**Anchorage School District**

**Ethnicity Report  
October 2009**

<b>School</b>	<b>Alaska</b>							<b>Total Diverse</b>	<b>Total</b>
	<b>White</b>	<b>African American or Black</b>	<b>Native or American Indian</b>	<b>Asian or Pacific Islander</b>	<b>Hispanic</b>	<b>Multi- Ethnic</b>			
Total Elementary Schools	10,978 45%	1,523 6%	2,259 9%	3,528 15%	2,603 11%	3,398 14%	13,311 55%	24,289	

## Anchorage School District

### Ethnicity Report October 2009

School	White	African American or Black	Alaska Native or American Indian	Asian or Pacific Islander	Hispanic	Multi- Ethnic	Total Diverse	Total
785 Begich Middle School	327 33%	107 11%	120 12%	201 20%	77 8%	163 16%	668 67%	995
700 Central Middle School of Science	259 45%	55 9%	41 7%	82 14%	65 11%	78 13%	321 55%	580
710 Clark Middle School	138 13%	128 12%	151 15%	362 35%	128 12%	122 12%	891 87%	1,029
780 Goldenview Middle School	543 71%	15 2%	41 5%	46 6%	63 8%	61 8%	226 29%	769
730 Gruening Middle School	404 67%	48 8%	17 3%	29 5%	53 9%	53 9%	200 33%	604
740 Hanshew Middle School	362 46%	32 4%	91 11%	119 15%	80 10%	109 14%	431 54%	793
750 Mears Middle School	443 53%	20 2%	70 8%	122 15%	76 9%	107 13%	395 47%	838
755 Mirror Lake Middle School	489 75%	12 2%	40 6%	19 3%	31 5%	61 9%	163 25%	652
760 Romig Middle School	265 38%	42 6%	71 10%	126 18%	107 15%	83 12%	429 62%	694

**Anchorage School District**

**Ethnicity Report  
October 2009**

<b>School</b>	<b>White</b>	<b>African American or Black</b>	<b>Alaska Native or American Indian</b>	<b>Asian or Pacific Islander</b>	<b>Hispanic</b>	<b>Multi-Ethnic</b>	<b>Total Diverse</b>	<b>Total</b>
770 Wendler Middle School	197 35%	52 9%	76 13%	86 15%	59 10%	98 17%	371 65%	568
Total Middle Schools	3,427 46%	511 7%	718 10%	1,192 16%	739 10%	935 12%	4,095 54%	7,522

## Anchorage School District

### Ethnicity Report October 2009

School	White	Alaska African American or Black	Alaska Native or American Indian	Asian or Pacific Islander	Hispanic	Multi- Ethnic	Total Diverse	Total
800 Bartlett High School	606 36%	188 11%	143 9%	317 19%	164 10%	248 15%	1,060 64%	1,666
810 Chugiak High School	961 77%	23 2%	64 5%	33 3%	68 5%	103 8%	291 23%	1,252
820 Dimond High School	1001 56%	66 4%	111 6%	290 16%	133 7%	191 11%	791 44%	1,792
865 Eagle River High School	653 71%	73 8%	18 2%	25 3%	83 9%	67 7%	266 29%	919
830 East High School	660 29%	252 11%	208 9%	651 29%	240 11%	259 11%	1,610 71%	2,270
840 Service High School	982 52%	101 5%	192 10%	226 12%	177 9%	198 11%	894 48%	1,876
860 South High School	1202 74%	28 2%	82 5%	126 8%	111 7%	79 5%	426 26%	1,628
850 West High School	693 38%	133 7%	178 10%	386 21%	226 12%	205 11%	1,128 62%	1,821
Total High Schools	6,758 51%	864 7%	996 8%	2,054 16%	1,202 9%	1,350 10%	6,466 49%	13,224

## Anchorage School District

### Ethnicity Report October 2009

School	White	African American or Black	Alaska Native or American Indian	Asian or Pacific Islander	Hispanic	Multi- Ethnic	Total Diverse	Total
885 AVAIL	14 24%	5 8%	16 27%	6 10%	3 5%	15 25%	45 76%	59
880 Benson Secondary/SEARCH	72 33%	25 11%	28 13%	32 15%	21 10%	40 18%	146 67%	218
883 COHO	15 75%	0 0%	2 10%	0 0%	2 10%	1 5%	5 25%	20
884 Continuation Program	8 50%	2 13%	3 19%	0 0%	1 6%	2 13%	8 50%	16
815 Crossroads	9 24%	5 13%	3 8%	7 18%	4 11%	10 26%	29 76%	38
875 McLaughlin School	43 33%	19 15%	31 24%	14 11%	8 6%	16 12%	88 67%	131
450 Polaris K-12	368 78%	5 1%	19 4%	23 5%	24 5%	33 7%	104 22%	472
835 SAVE	89 40%	16 7%	17 8%	33 15%	28 13%	40 18%	134 60%	223
845 Steller Secondary	221 78%	3 1%	9 3%	12 4%	14 5%	26 9%	64 22%	285

**Anchorage School District**

**Ethnicity Report  
October 2009**

<b>School</b>	<b>White</b>	<b>African American or Black</b>	<b>Alaska Native or American Indian</b>	<b>Asian or Pacific Islander</b>	<b>Hispanic</b>	<b>Multi- Ethnic</b>	<b>Total Diverse</b>	<b>Total</b>
Total Alternative Schools	839 57%	80 5%	128 9%	127 9%	105 7%	183 13%	623 43%	1,462

## Anchorage School District

### Ethnicity Report October 2009

School	White	African American or Black	Alaska Native or American Indian	Asian or Pacific Islander	Hispanic	Multi- Ethnic	Total Diverse	Total
506 Alaska Native Cultural Charter	7 4%	5 3%	111 61%	4 2%	8 4%	47 26%	175 96%	182
510 Aquarian Charter School	239 66%	16 4%	16 4%	19 5%	32 9%	41 11%	124 34%	363
530 Eagle Academy Charter School	127 78%	6 4%	1 1%	2 1%	13 8%	14 9%	36 22%	163
540 Family Partnership Charter Schol	426 71%	22 4%	48 8%	17 3%	44 7%	45 7%	176 29%	602
545 Frontier Charter School	245 73%	16 5%	19 6%	3 1%	20 6%	33 10%	91 27%	336
550 Highland Tech High School	144 61%	6 3%	22 9%	15 6%	20 8%	30 13%	93 39%	237
560 Rilke Schule German School	218 82%	1 0%	3 1%	8 3%	11 4%	25 9%	48 18%	266
595 Winterberry Charter School	148 74%	5 3%	7 4%	2 1%	19 10%	18 9%	51 26%	199
Total Charter Schools	1,554 66%	77 3%	227 10%	70 3%	167 7%	253 11%	794 34%	2,348

## Anchorage School District

### Ethnicity Report October 2009

School	White	African American or Black	Alaska Native or American Indian	Asian or Pacific Islander	Hispanic	Multi- Ethnic	Total Diverse	Total
667 ACE/ACT	61 49%	9 7%	20 16%	10 8%	10 8%	14 11%	63 51%	124
603 ASSDHH	22 54%	2 5%	7 17%	4 10%	5 12%	1 2%	19 46%	41
616 Booth Secondary	2 67%	0 0%	1 33%	0 0%	0 0%	0 0%	1 33%	3
633 Bragaw Residential	3 25%	2 17%	5 42%	1 8%	1 8%	0 0%	9 75%	12
606 DeBarr Residential Treatment	18 39%	3 7%	8 17%	2 4%	6 13%	9 20%	28 61%	46
661 Early Intervention Services	28 46%	2 3%	8 13%	3 5%	8 13%	12 20%	33 54%	61
650 Jesse Lee	7 47%	1 7%	4 27%	0 0%	1 7%	2 13%	8 53%	15
617 Maplewood	0 0%	0 0%	1 50%	0 0%	0 0%	1 50%	2 100%	2
618 McKinley Heights	3 25%	1 8%	4 33%	1 8%	1 8%	2 17%	9 75%	12

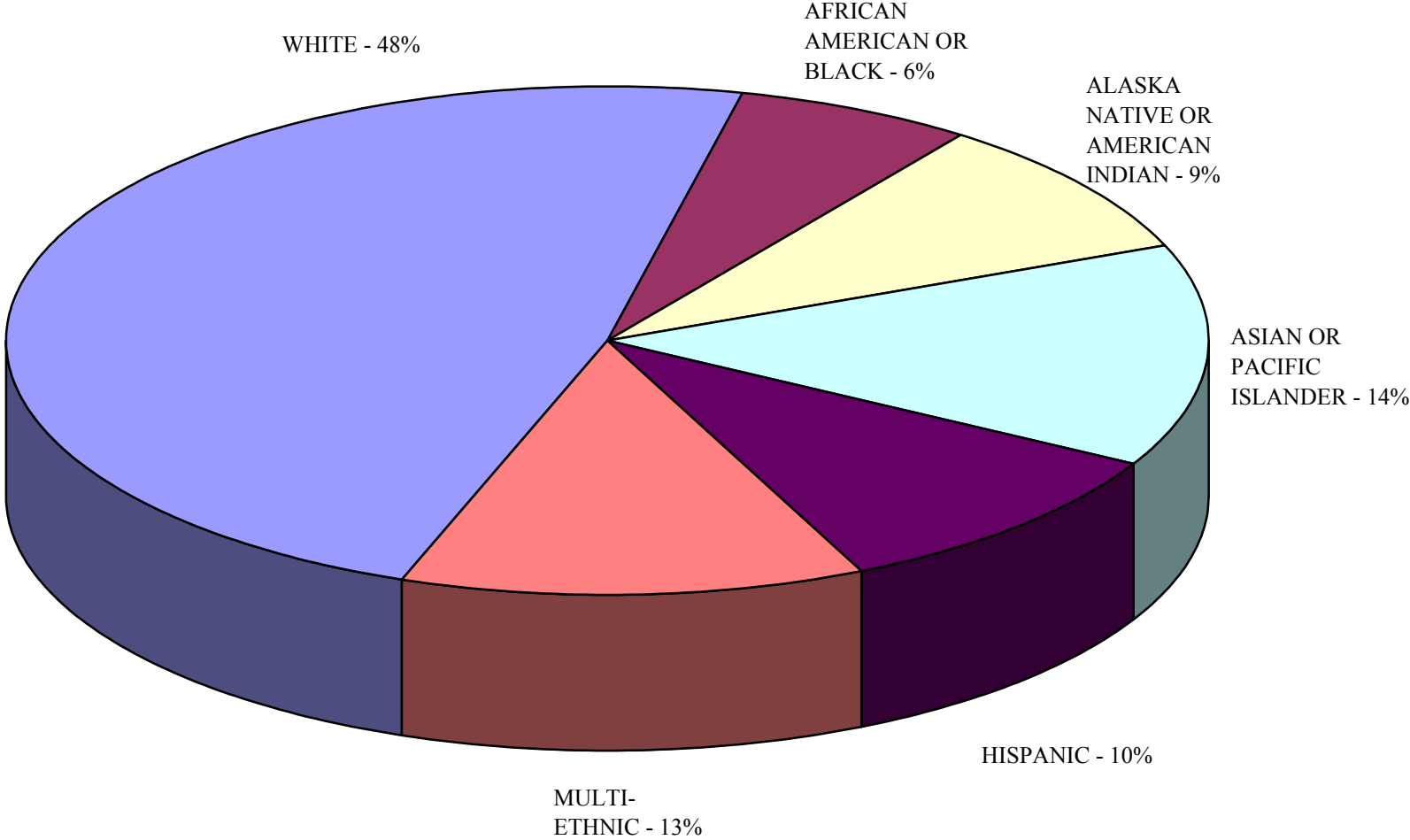
## Anchorage School District

### Ethnicity Report October 2009

School	White	African American or Black	Alaska Native or American Indian	Asian or Pacific Islander	Hispanic	Multi- Ethnic	Total Diverse	Total
663 Mt. Iliamna	25 43%	7 12%	7 12%	4 7%	2 3%	13 22%	33 57%	58
631 North Star Hospital	19 49%	0 0%	9 23%	1 3%	5 13%	5 13%	20 51%	39
910 Outreach / Private	3 30%	2 20%	2 20%	1 10%	0 0%	2 20%	7 70%	10
635 Providence Girls	2 40%	0 0%	1 20%	1 20%	1 20%	0 0%	3 60%	5
630 Providence Heights	1 20%	1 20%	2 40%	0 0%	1 20%	0 0%	4 80%	5
625 Whaley	25 25%	15 15%	33 32%	3 3%	10 10%	16 16%	77 75%	102
Total Special Services	219 41%	45 8%	112 21%	31 6%	51 10%	77 14%	316 59%	535

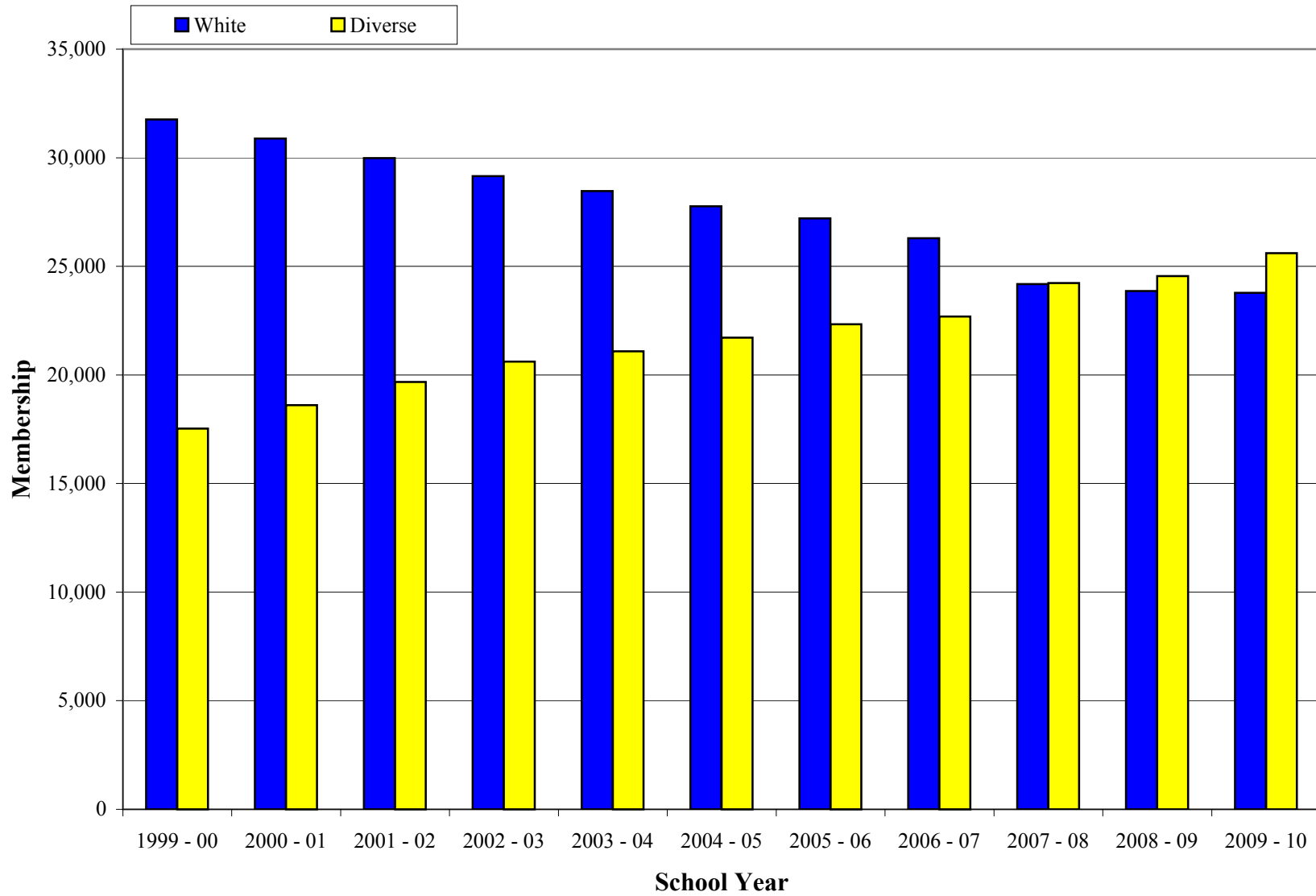
**Chart 1**  
**Anchorage School District**  
**October 2009**

**STUDENT MEMBERSHIP ETHNIC COMPOSITION**



**Chart 2**  
**Anchorage School District**  
**October 2009**

**HISTORICAL STUDENT MEMBERSHIP COMPOSITION**



**Chart 3**  
**Anchorage School District**  
**October 2009**

**ETHNICITY/RACE BY PROGRAM TYPE**

