



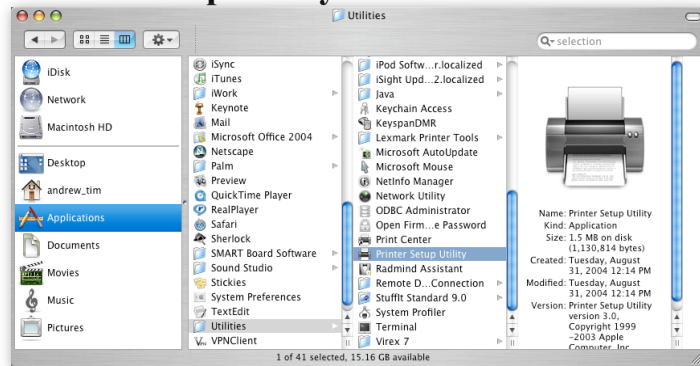
Mac OS X version 10.4

Adding Printers by IP

This tutorial describes using the **Printer Setup Utility** to add a printer by using IP in **Mac OS X version 10.4**.

Adding Printers to the Printer List

Navigate to your **Applications** folder. Clicking the **Applications** icon on the sidebar is a quick way to get there. Open the **Utilities** folder. Double-click the **Printer Setup Utility** icon to launch it.



Adding a Printer Via IP

When **Printer Setup Utility** is first launched, you may receive a message saying that no printers are available. Clicking the **Add** button will open the **Print Browser** window to choose the printer you want. The default option is to choose a printer using its IP address.

Under the **Protocol** pull-down menu, select “**Line Printer Daemon**”. Enter the printer’s IP address in the **Address** field, leaving the **Queue** field blank.

A descriptive, user-friendly name can be entered in the **Name** field. Finally, click the **Add** button to add the printer to the printer list.

Note: If you are unsure of the IP address of the printer you wish to add, ask your building tech contact/coordinator.

