

Creating Computer Lists in Workgroup Manager

A computer list is a group of computers that have the same preference settings and are available to the same users and groups. You can use a computer list to assign the same privileges and preferences to multiple computers. A computer cannot belong to more than one list, and you cannot add computers to the Guest Computers list. After you set up a computer list, you can manage preferences for it if you wish.

Be sure to use an up-to-date 10.4 version of Workgroup Manager. Also, the directions are written for using WGM in the same building as the client computers that will be added to the list(s).

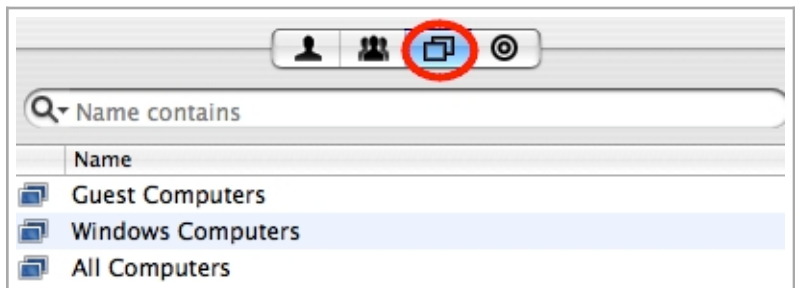
Launch Workgroup Manager

Click the **lock** to authenticate with the xx_admin account.

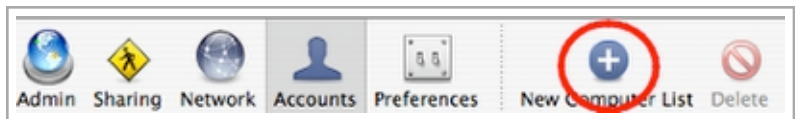


Creating the computer list.

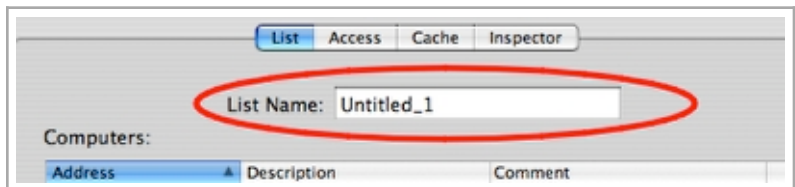
Click on the computer lists tab.



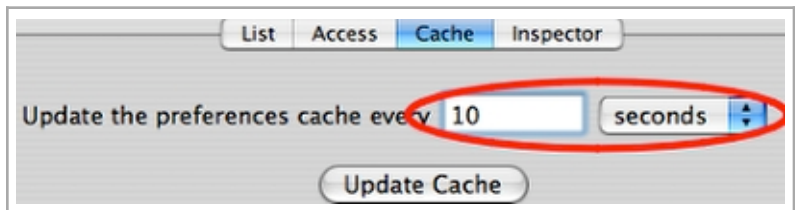
Click on **New Computer List** in the toolbar.



Edit the **List Name** field to give the computer list a descriptive name (i.e. Lab Computers, Library Patrons, etc).

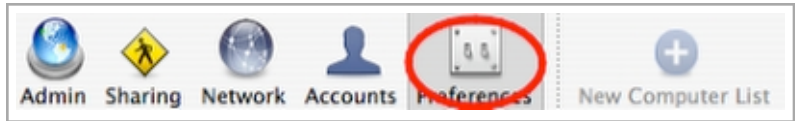


Click on the **Cache** tab and change the "Update the preferences cache every" setting to 10 seconds.



Click **Save** in the lower right of the WGM window.

Click on **Preferences** in the toolbar.



Click on **Login**.

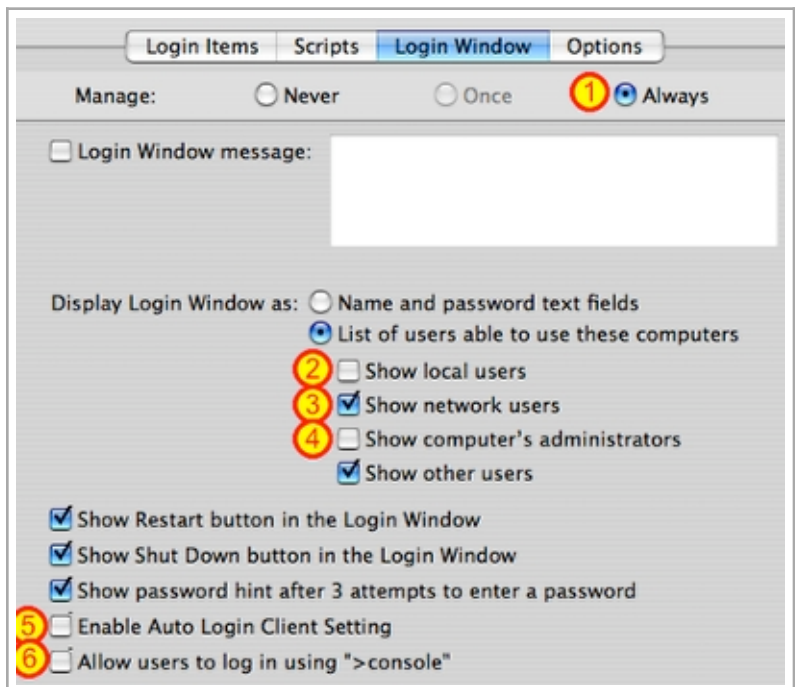


Click the **Login Window** tab and make the following changes.

- 1) Select Always
- 2) Uncheck "Show local users"
- 3) Check "Show network users"
- 4) Uncheck "Show computer's administrators"
- 5) Uncheck "Enable Auto Login Client Setting"
- 6) Uncheck "Allow users to log in using ">console"

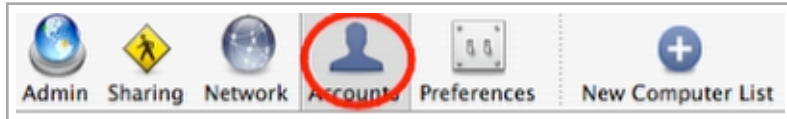
Adding a "Login Window message" is optional.

Click **Apply Now**.



Adding computers to the list.

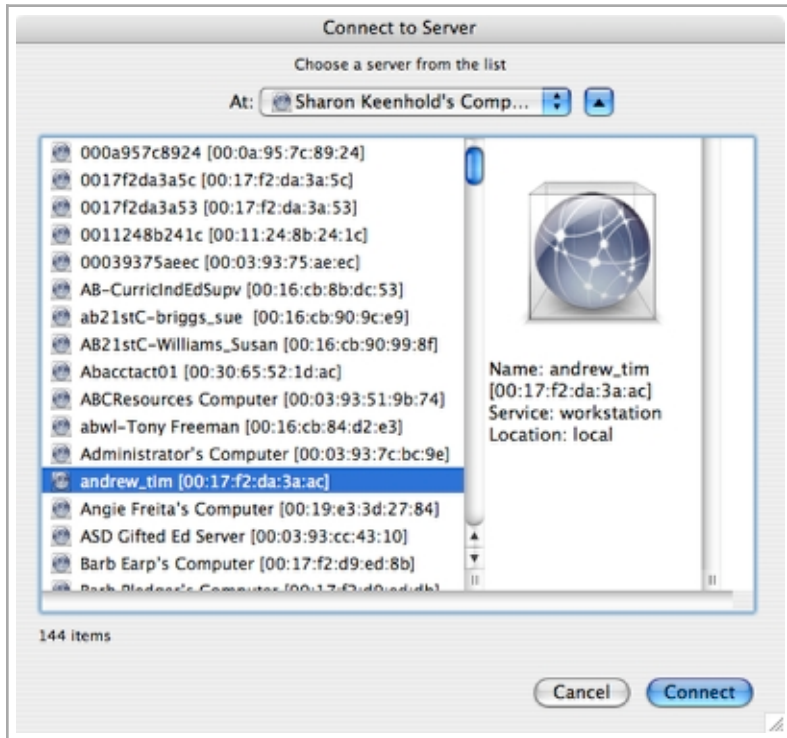
Click on **Accounts** in the toolbar.



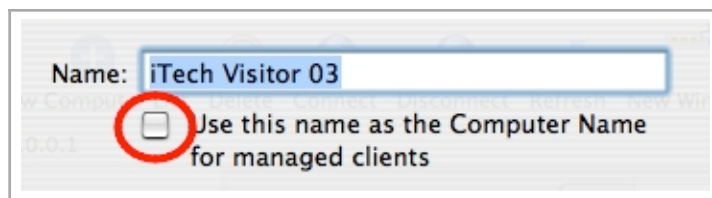
Click on the **Browse** button to show the list of computers available on the school's network.

Select the appropriate computers from the list and click **Connect**.

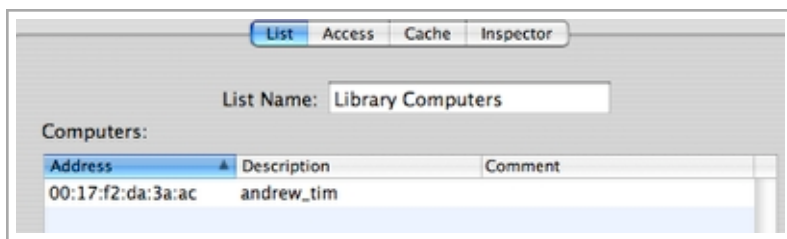
Note:
Use the Shift key to make a contiguous selection.
Use the Command (Apple) key to make non-contiguous.



To not conflict with Boxnamer, click on each computer in the list and **uncheck** "Use this name as the Computer Name for managed clients".



Once all the computers are added to the list, click **Save**.



The computer list has been successfully created! It is now ready to have the needed preferences configured.