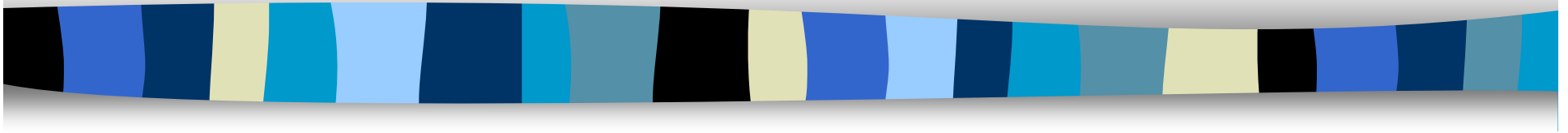


The Anchorage School District



Title VII Indian Education Program



ANCHORAGE SCHOOL DISTRICT • TITLE VII
INDIAN EDUCATION
NATIVE EDUCATION FOR PRESERVATION



Agenda

- History of Title VII Indian Education
- Program Summary
- Public Comment
- Breakout Sessions

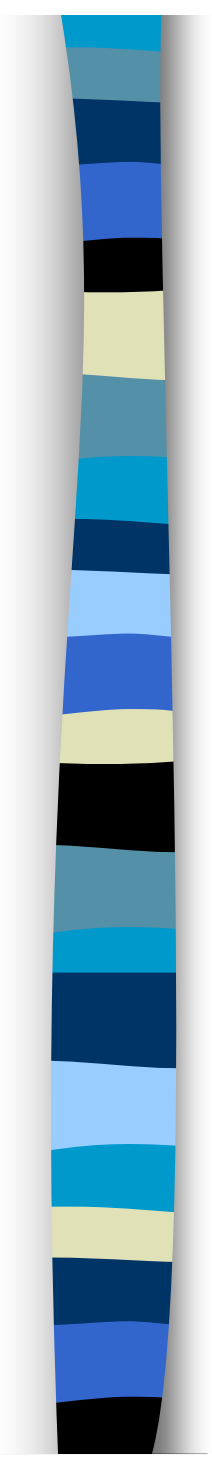


No Child Left Behind Act

Title VII- Indian, Native Hawaiians, and Alaska Natives Section 701 Part A Indian Education

Statement of Policy

It is the policy of the United States to fulfill the Federal Government's unique and continuing trust relationship with and responsibility to the Indian people for the education of Indian children. The Federal Government will continue to work with local educational agencies, Indian tribes and organizations, postsecondary institutions, and other entities toward the goal of ensuring that programs that serve Indian children are the highest quality and provide for not only the basic elementary and secondary educational needs, but also the unique educational and culturally related academic needs of these children.



The Title VII program is funded by the US Department of Education . The grant is written yearly by our office. We began Indian Education in the 70's and we have over 8,000 Alaska Native/American Indian students. Thousands of students have benefited from the services provided by the grant yearly.



Funding: 506 Forms

Formula Grant: based on the number of 506 forms collected

2004-2005: 5,508 forms= \$292.00 per form

2005-2006: 5,758 forms= \$278.00 per form

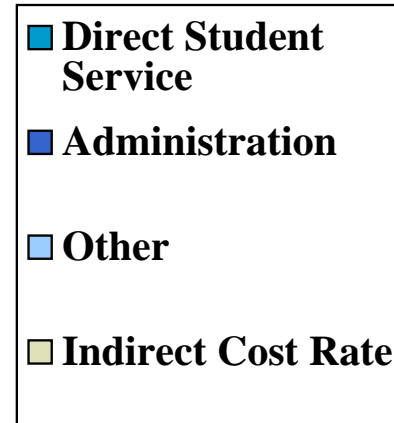
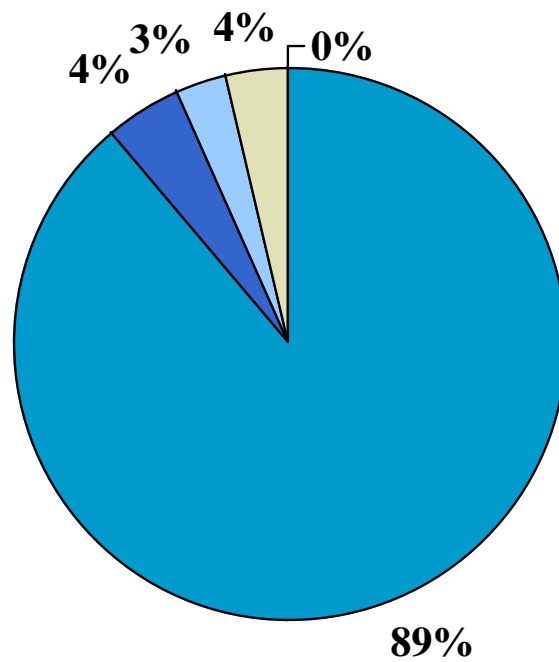
2006-2007: 6,080 forms= \$278.00 per form

2007-2008: 6,140 forms= \$286.00 per form

2008-2009: 6,840 forms= \$302.00 per form

2009-2010: 7,210 forms= \$311.00 per form

Budget for 2008-2009





Served 2008-2009

- Total Native student population: 8,700
- Total number of Native students provided direct services by Title VII staff members:
 - 2,363

The Title VII program employees 34 staff

- **Supervisor**
- **Cultural Enrichment Specialist (1)**
- **Youth Development Tutors (22)**
- **Resource Teacher (1)**
- **Administrative Assistant (1)**
- **Part-time Secretary (.5)**
- **Community Counselors (7)**
- **Language Teacher (.4)**





Objectives

- Attendance
- Dropout Prevention
- Increase Graduation
- Improvement in Mathematics, Reading and Writing
- Native Language Instruction
- HSGQE Preparation
- Technology
- Professional Development



Special Activity Agreements

- Part-time staff in 6 schools delivering supplemental academic support for five to ten Native students that were not proficient in Reading or Math

Evening Programs

- Twice a week at Spring Hill
- This year we have included two additional sites





Summer Opportunities

- Summer Enrichment
- Summer Walk and Write
- Summer Artist
- Summer Interns



Professional Development

- On-going training for Title VII Staff
- Teacher Workshops
- Resources on-line
- Training on-site
- Participating in a variety of Curriculum Meetings
- Development and implementation of numerous Cross-Cultural trainings



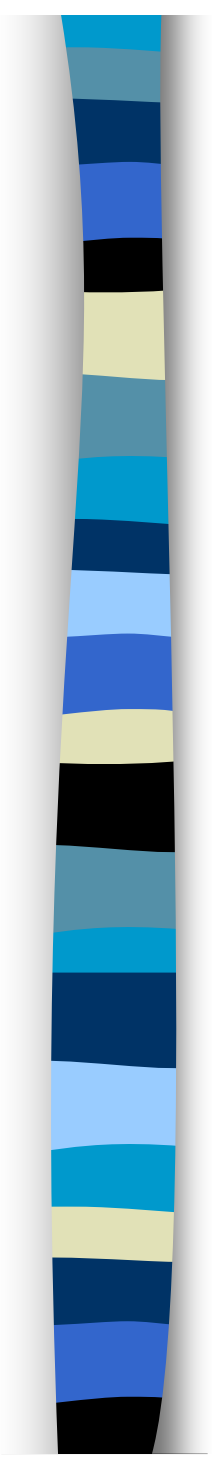
Alaska Native/American Indian Heritage Month



Parent Involvement Opportunities

- Evening Program
- Monthly NAC meetings
- Opportunity to serve on NAC, election in in the spring





The words of Sitting Bull are as relevant today as they were when he spoke them.

‘Let us put our minds together to see what kind of life we can provide for our children’

Education is the key to the future of our tribes and nations. With a well educated citizenry and by working together we can strategically plan for the future of our children.



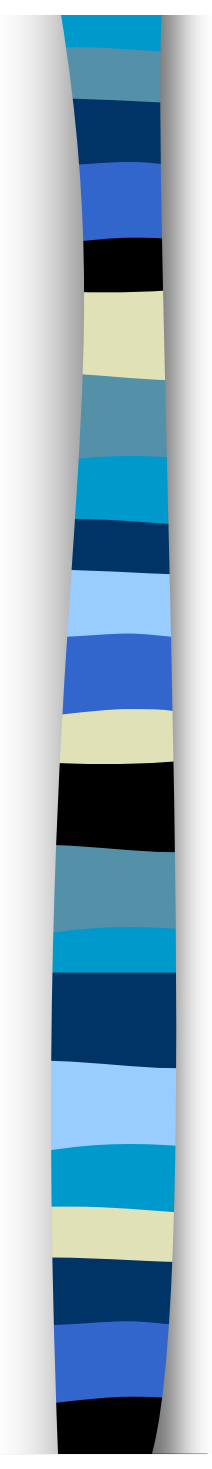
Public Comment

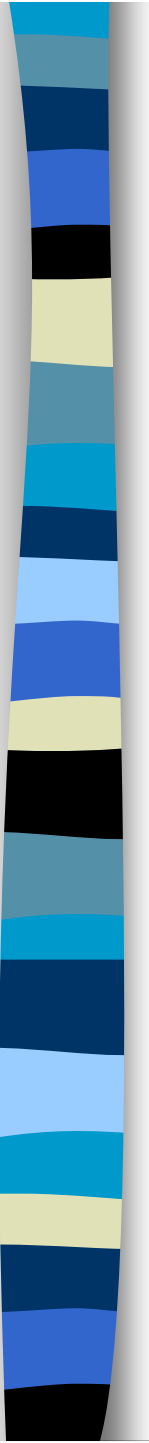
- Three to five minute time limit.

What do you see as the greatest need? How do we provide services to more of our students?

- Breakout Groups: High school, middle school and elementary
- Choose a recorder



- 
- In your breakout groups, please share ideas, make suggestions and recommendations on ways Title VII Indian Education can meet the objectives for the 2009-2010 school year.



**ASD Title VII Indian Education
5530 East Northern Lights Blvd.
Anchorage, AK 99504
(907) 742-4445**

www.asdk12.org

**U.S. Department of Education
Office of Indian Education
400 Maryland Ave.
Washington D.C. 20202-6335**

www.ed.gov/about/offices/list/ods/oie/index.html

Alaska Native/American Indian: Performance of Academic Indicators, 2007-2008

Introduction:

This report is based upon the new race/ethnicity identification process that was implemented in 2007-08. Under the new guidelines the student selects all that apply from the seven race/ethnicity categories of Hispanic or Latino, Alaska Native, American Indian, Asian, Black, Native Hawaiian or Other Pacific Islander, and White. If the student selects more than one, they are reported under a separate category of "two or more races" with the exception of Hispanic which is considered an ethnicity.

Overall changes from the re-identification process were an increase in "two or more races" and Hispanic or Latino, and a decrease in all of the remaining race/ethnicity designated student groups. The enrollment counts of Alaska Native/American Indian students on October 1 decreased from 6,627 in 2007 to 4,338 in 2008. Several students who had previously been reported under the category of Alaska Native/American Indian are now reported as "two or more races." **The data in this report should be interpreted with extreme caution when comparing academic changes from 2006-07 to 2007-08 because of the significant change in the student population brought about by the new race/ethnicity re-identification process.**

The data below describes the 2007-08 status of the Alaska Native/American Indian student population within the Anchorage School District. The categories that are discussed include participation in testing, Standard Based Assessment results, TerraNova results, and the High School Graduation Qualifying Examination results as compared with the White and All Students groups. Dropout and graduation rates are also included with charts and graphs of all designated student groups. Other reported data elements are as follows: the number of Alaska Native/American Indian students designated as gifted, numbers completing Algebra I by the end of their grade 8 school year, number successfully completing Algebra I with a B or better by grade 8 and successfully completing Geometry or Algebra II with a C or better in grade 9, and the achievement gap. All attachments are briefly explained below.

Attachment 1: Participation in Reading, Writing and/or Mathematics SBA

The participation rate for Alaskan Native/ American Indian students in the ASD during the 2007-08 year was 98.21 percent. The participation rate is calculated by taking the number of Alaska Native/American Indian students enrolled on the first day of testing and dividing it by the number of Alaska Native/American Indian students who had a valid test score in reading, writing or mathematics. There was a decrease of 0.11 percentage points from the 2006-07 participation rate of 98.32 percent. For the 2007-08 year the White student population had a participation rate of 99.06 percent, an increase of .02 percentage points from the previous year. All Students in the 2007-08 year had a participation rate of 98.97 percent, an increase of .05 percentage points from last year.

During the 2007-08 school year there were three tests administered by the ASD. These include:

- the SBA subtests of reading, writing and mathematics to grades 3 through 10, and science to grades 4, 8 and 10
- the TN 3rd Edition to grades 5 and 7
- the HSGQE to all grade 10 students and grade 11 and 12 students who had not passed all three parts of the HSGQE

The TN3 was administered for the first time to ASD students in the 2007-08 school year. For the 2006-07 school year the students took the TerraNova 2nd Edition. Scores from the TN2 and TN3 are comparable, but the TN3 was found to be slightly easier than the TN2 for grades 5 and 7 in reading and mathematics as well as grade 7 language. Based upon the new norms, grade 5 language was determined to be slightly more difficult in the TN3 than in the TN 2.

Attachments 2-5: SBA

When comparing the SBA results of Alaska Native/American Indian students to White students and All Students for the 2007-08 school year we saw that there were higher percentages of White students than Alaska Native/American

Indian who were proficient or above on the subtests. On the SBA reading test the percent scoring proficient or above was 91.24 percent for White and 71.02 percent for Alaska Native/American Indian; in writing on the SBA the percent scoring proficient or above was 86.13 percent for White and 58.69 percent for Alaska Native/American Indian; on the mathematics subtest the percent scoring proficient or above was 82.04 percent for White and 57.52 percent for Alaska Native/American Indian; and on the science subtest the percent scoring proficient or above was 69.41 percent for White and 36.01 percent for Alaska Native/American Indian. In relation to the All Students category the numbers show that All Students scored proficient or above at a percent that was higher than Alaska Native/American Indian and less than White on all subtests.

Percent loses from 2006-07 to 2007-08 school years were identified for Alaska Native/American Indian students on SBA reading, writing and mathematics subtests. On the SBA reading test the percent scoring proficient or above decreased from 73.91 percent to 71.02 percent; on writing on the SBA the percent scoring proficient or above decreased from 63.17 percent to 58.69 percent; and on the SBA mathematics subtest the percent scoring proficient or above decreased from 62.69 percent to 57.52 percent. The 2007-08 year was the baseline year for the science subtest.

Attachment 6: SBA Change

The change chart presented in attachment 6 describes the change in students' mean scale scores who tested in both the 2006-07 year and the 2007-08 year. Alaska Native/American Indian students followed the patterns of increase and decrease in difference that occurred within the categories of All Students and the White students for the majority of the comparisons. Grades in which the Alaska Native/American Indian differences were in the opposite directions as either the White or All Students groups were:

- writing from grade 5 to 6 in which there was an increase of 1.39 and 4.13 for All Students and White, while Alaska Native/American Indian students decreased by 2.81.
- writing for grade 7 to 8 Alaska Native/American Indian students had a decrease of 2.37, while the All Students had an increase of 5.10 and White had an increase of 4.66.
- writing for grade 8 to 9 in which there was a decrease of 1.07 and 0.16 for All Students and White, while Alaska Native/American Indian students increased by 1.99.
- mathematics for grade 4 to 5 the Alaska Native/American Indian students had an increase of 1.26 and All Students had an increase of 0.78, while White had a decrease of 0.84.

Attachment 7-9: TerraNova Quartiles

The ASD administered the TN3 in 2007-08 which is based on new norms. The quartile scores from TN3 are comparable to TN2. On the TN tests for grades 5 and 7 the Alaska Native/American Indian student population demonstrated opposite displays of quartile percentages than the White students. For instance, the percentage of Alaska Native/American Indian students in the lowest (1st) quartile is higher than in the highest (4th) quartile for all subtests and grades. On the other hand, for White students the percentage in the lowest (1st) quartile is lower than the highest (4th) quartile for all subtests and grades.

Comparisons of the 2006-07 to 2007-08 TN testing of Alaska Native/American Indian students demonstrated that performance between the two years had changed for grade 5 across all subtests; specifically the rise in the lowest (1st) quartile was evident. On the other hand, grade 7 appeared similar to the previous year. Grade 7 mathematics had an increase between the two years in the percentage of students scoring in the highest (4th) quartile. The percentage of students scoring in the lowest (1st) quartile decreased for all subtests for grade 7 students.

Attachment 10: TerraNova NCE

When the results for grades 5 and 7 TN mean normal curve equivalent scores were reviewed, we saw that for both grades and on all subtests the Alaska Native/American Indian students scored the lowest when compared with the White students and All Students.

When comparing the 2006-07 and the 2007-08 mean NCE score for the Alaska Native/American Indian students by grade, grade 7 showed improvement in the reading and mathematics subtests, grade 5 dropped on all subtests and grade 7 dropped in language.

Attachment 11-14: HSGQE

When comparing the grade 10 HSGQE results of Alaska Native/American Indian students to White Students for the 2007-08 school year, the Alaska Native/American Indian students had a lower percent proficient on all the subtests than the White student population. When comparing the 2006-07 and 2007-08 results on the HSGQE for grade 10 students, we saw that there was a decrease in percent proficient for reading, writing and mathematics for All students, White students and Alaska Native/American Indian students.

For grade 11 and 12 Alaska Native/American Indian students, the cumulative percent scoring proficient on the HSGQE test was reported. When comparing the HSGQE results from 2006-07 to 2007-08 for grade 11 Alaska Native/American Indian students, the percent proficient on reading increased from 85.54 percent to 86.27 percent; the percent proficient on writing increased from 81.62 percent to 82.35 percent; and the percent proficient on mathematics increased from 76.72 percent to 77.65 percent. When comparing the HSGQE results from 2006-07 to 2007-08 for grade 12 Alaska Native/American Indian students, the percent proficient on reading decreased from 87.60 percent to 85.71 percent; the percent proficient on writing decreased from 89.26 percent to 85.71 percent; and the percent proficient on mathematics increased from 84.57 percent to 85.25 percent.

Attachment 15-16: Dropout and Graduation Rates

The dropout rate for the 2007-08 year Alaska Native/American Indian student population had an increase of 0.05 percentage points from the 2006-07 school year, while the White student population had a decrease of 0.79 percentage points and the All Students category had a decrease of 0.94 percentage points.

The graduation rate of Alaska Native/American Indian students for the 2007-08 year had a decrease of 11.09 percentage points from the 2006-07 school year, while the White students had a decrease of 1.64 percentage points and All Students had a decrease of 0.66 percentage points. The graduation rate of Alaska Native/American Indian students from the ASD for school year 2007-08 was 31.63 percent.

Attachment 17: Gifted Students

The number of Alaska Native/American Indian students identified as gifted in the 2007-08 school year was 118 students. This was 3.56 percent of the district's gifted student population for 2007-08.

Attachment 18: Mathematics Advancement

In the 2006-07 school year 577 Alaska Native/American Indian students were enrolled in grade 8. Of these students 9.19 percent completed Algebra I with a C or better by the end of their grade 8 year. In the 2007-08 school year 420 Alaska Native/American Indian students were enrolled in grade 8. Of those students, 8.81 percent completed Algebra I with a C or better by the end of their grade 8 year. This was a decrease of 0.38 percentage points from the previous year.

Of the Alaska Native/American Indian students who successfully completed Algebra I with a B or better in grade 8 in 2006-07 and who returned to the ASD in grade 9 in 2007-08, 45.16 percent completed their grade 9 Geometry or Algebra II class with a grade of C or better in 2007-08. This was a decrease of 18.94 percentage points from the previous year.

Attachment 19: Achievement Gap

The achievement gap of Alaska Native/American Indian students to White students between the 2006-07 school year and the 2007-08 school year had an increase of 4.97 percentage points in language arts and an increase of 3.55 percentage points in mathematics.

**Attachment 1: Participation Rates
(Tested in Reading, Writing or Mathematics SBA)**

2007-08 Participation Rate for Alaska Native/American Indian, White and All Students

Alaska Native/American Indian		Tested	Enrolled	Participation Rate
		N	N	%
GRADE	3	367	372	98.66%
	4	328	333	98.50%
	5	312	313	99.68%
	6	325	329	98.78%
	7	290	294	98.64%
	8	348	352	98.86%
	9	279	287	97.21%
	10	280	295	94.92%
	Total	2,529	2,575	98.21%

White		Tested	Enrolled	Participation Rate
		N	N	%
GRADE	3	1,712	1,720	99.53%
	4	1,676	1,690	99.17%
	5	1,727	1,739	99.31%
	6	1,725	1,731	99.65%
	7	1,846	1,857	99.41%
	8	1,899	1,910	99.42%
	9	1,923	1,950	98.62%
	10	1,971	2,019	97.62%
	Total	14,479	14,616	99.06%

All Students		Tested	Enrolled	Participation Rate
		N	N	%
GRADE	3	3,719	3,738	99.49%
	4	3,491	3,519	99.20%
	5	3,506	3,525	99.46%
	6	3,534	3,553	99.47%
	7	3,612	3,635	99.37%
	8	3,692	3,717	99.33%
	9	3,643	3,713	98.11%
	10	3,610	3,706	97.41%
	Total	28,807	29,106	98.97%

2006-07 Participation Rate for Alaska Native/American Indian, White and All Students

Alaska Native/American Indian		Tested	Enrolled	Participation Rate
		N	N	%
GRADE	3	496	497	99.80%
	4	503	504	99.80%
	5	486	493	98.58%
	6	471	474	99.37%
	7	502	508	98.82%
	8	495	505	98.02%
	9	475	493	96.35%
	10	428	448	95.54%
	Total	3856	3922	98.32%

White		Tested	Enrolled	Participation Rate
		N	N	%
GRADE	3	1800	1819	98.96%
	4	1836	1846	99.46%
	5	1842	1849	99.62%
	6	1955	1968	99.34%
	7	2006	2022	99.21%
	8	2046	2061	99.27%
	9	2211	2242	98.62%
	10	2079	2121	98.02%
	Total	15775	15928	99.04%

All Students		Tested	Enrolled	Participation Rate
		N	N	%
GRADE	3	3538	3565	99.24%
	4	3575	3591	99.55%
	5	3518	3540	99.38%
	6	3618	3643	99.31%
	7	3727	3759	99.15%
	8	3745	3782	99.02%
	9	3802	3873	98.17%
	10	3566	3654	97.59%
	Total	29089	29407	98.92%

Attachment 2: SBA Reading Performance Levels and Proficiency

2007-08 SBA Reading Performance Level for Alaska Native/American Indian, White and All Students

Alaska Native/American Indian		Reading Performance Level							
		Advanced		Proficient		Below		Far Below	
		N	%	N	%	N	%	N	%
GRADE	3	77	21.69%	161	45.35%	69	19.44%	48	13.52%
	4	61	19.00%	172	53.58%	40	12.46%	48	14.95%
	5	48	15.69%	174	56.86%	66	21.57%	18	5.88%
	6	78	24.15%	160	49.54%	67	20.74%	18	5.57%
	7	53	18.93%	149	53.21%	62	22.14%	16	5.71%
	8	70	20.83%	176	52.38%	67	19.94%	23	6.85%
	9	69	25.56%	120	44.44%	77	28.52%	4	1.48%
	10	36	13.90%	136	52.51%	67	25.87%	20	7.72%
	Total	492	20.08%	1,248	50.94%	515	21.02%	195	7.96%

White		Reading Performance Level							
		Advanced		Proficient		Below		Far Below	
		N	%	N	%	N	%	N	%
GRADE	3	926	54.57%	574	33.82%	134	7.90%	63	3.71%
	4	900	54.18%	612	36.85%	89	5.36%	60	3.61%
	5	812	47.24%	767	44.62%	113	6.57%	27	1.57%
	6	943	55.08%	631	36.86%	118	6.89%	20	1.17%
	7	826	45.14%	820	44.81%	144	7.87%	40	2.19%
	8	936	49.81%	790	42.04%	125	6.65%	28	1.49%
	9	1,224	64.56%	539	28.43%	116	6.12%	17	0.90%
	10	792	41.19%	971	50.49%	131	6.81%	29	1.51%
	Total	7,359	51.40%	5,704	39.84%	970	6.78%	284	1.98%

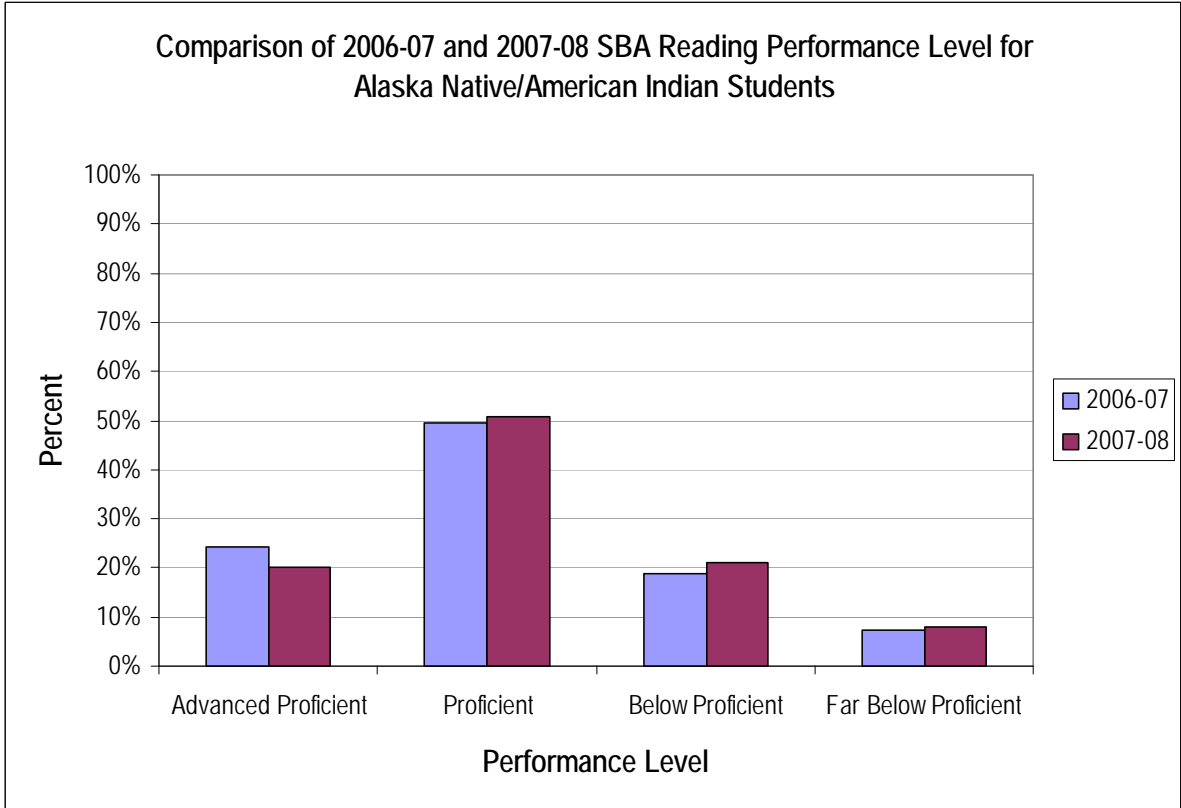
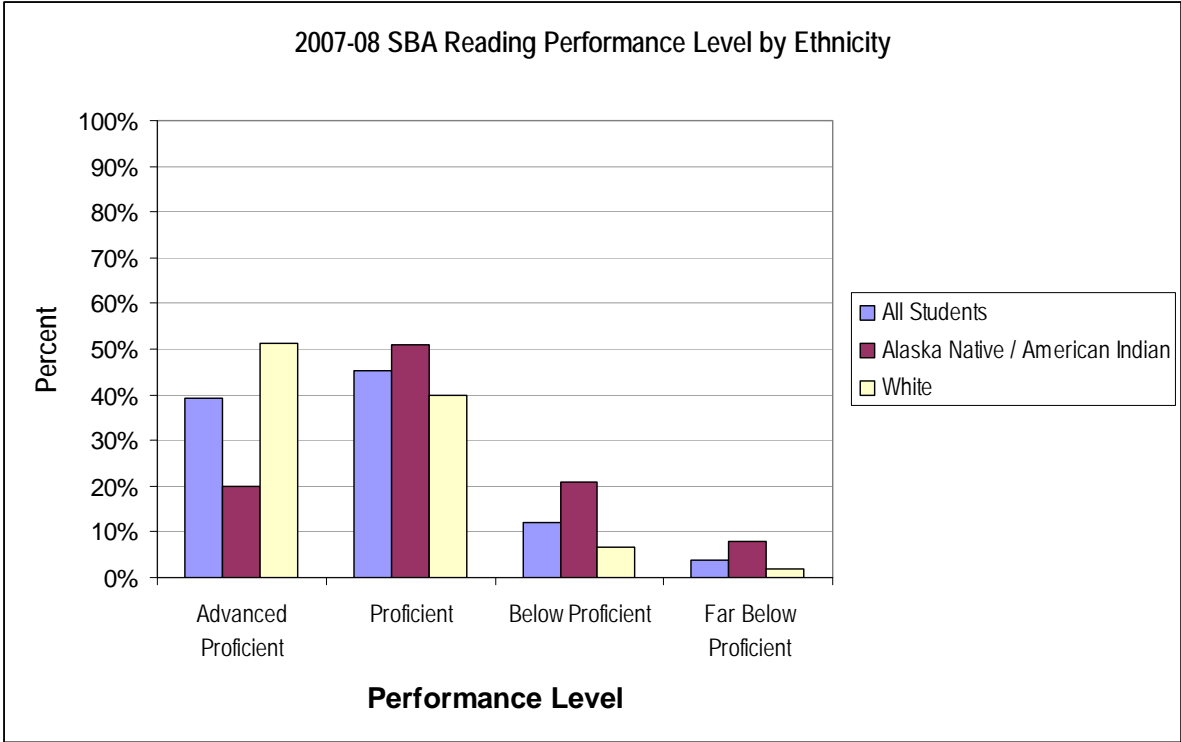
All Students		Reading Performance Level							
		Advanced		Proficient		Below		Far Below	
		N	%	N	%	N	%	N	%
GRADE	3	1,526	41.68%	1,437	39.25%	455	12.43%	243	6.64%
	4	1,371	39.83%	1,520	44.16%	314	9.12%	237	6.89%
	5	1,206	34.73%	1,748	50.33%	405	11.66%	114	3.28%
	6	1,483	42.44%	1,471	42.10%	458	13.11%	82	2.35%
	7	1,209	34.02%	1,776	49.97%	429	12.07%	140	3.94%
	8	1,414	38.85%	1,727	47.45%	402	11.04%	97	2.66%
	9	1,822	50.88%	1,279	35.72%	422	11.78%	58	1.62%
	10	1,065	30.38%	1,843	52.57%	488	13.92%	110	3.14%
	Total	11,096	39.14%	12,801	45.15%	3,373	11.90%	1,081	3.81%

2006-07 SBA Reading Performance Level for Alaska Native/American Indian, White and All Students

Alaska Native/American Indian		Reading Performance Level							
		Advanced		Proficient		Below		Far Below	
		N	%	N	%	N	%	N	%
GRADE	3	137	27.79%	235	47.67%	68	13.79%	53	10.75%
	4	99	20.00%	256	51.72%	82	16.57%	58	11.72%
	5	110	22.73%	263	54.34%	74	15.29%	37	7.64%
	6	120	26.03%	228	49.46%	91	19.74%	22	4.77%
	7	93	18.83%	237	47.98%	116	23.48%	48	9.72%
	8	98	20.21%	273	56.29%	81	16.70%	33	6.80%
	9	150	32.40%	190	41.04%	107	23.11%	16	3.46%
	10	117	28.19%	195	46.99%	94	22.65%	9	2.17%
	Total	924	24.38%	1877	49.53%	713	18.81%	276	7.28%

White		Reading Performance Level							
		Advanced		Proficient		Below		Far Below	
		N	%	N	%	N	%	N	%
GRADE	3	996	55.83%	582	32.62%	127	7.12%	79	4.43%
	4	949	51.91%	703	38.46%	103	5.63%	73	3.99%
	5	859	46.94%	831	45.41%	99	5.41%	41	2.24%
	6	1016	52.48%	756	39.05%	146	7.54%	18	0.93%
	7	904	45.47%	913	45.93%	133	6.69%	38	1.91%
	8	1046	51.68%	854	42.19%	95	4.69%	29	1.43%
	9	1379	63.31%	620	28.47%	164	7.53%	15	0.69%
	10	1083	53.59%	812	40.18%	116	5.74%	10	0.49%
	Total	8232	52.81%	6071	38.94%	983	6.31%	303	1.94%

All Students		Reading Performance Level							
		Advanced		Proficient		Below		Far Below	
		N	%	N	%	N	%	N	%
GRADE	3	1536	43.89%	1371	39.17%	357	10.20%	236	6.74%
	4	1400	39.74%	1553	44.08%	334	9.48%	236	6.70%
	5	1262	36.22%	1749	50.20%	337	9.67%	136	3.90%
	6	1467	41.15%	1557	43.67%	467	13.10%	74	2.08%
	7	1265	34.50%	1818	49.58%	435	11.86%	149	4.06%
	8	1482	40.16%	1778	48.18%	332	9.00%	98	2.66%
	9	1922	51.63%	1255	33.71%	481	12.92%	65	1.75%
	10	1463	42.15%	1523	43.88%	443	12.76%	42	1.21%
	Total	11797	41.22%	12604	44.03%	3186	11.13%	1036	3.62%



2007-08 SBA Reading Proficiency for Alaska Native/American Indian, White and All Students

		Reading Proficiency			
		Proficient		Not Proficient	
		N	%	N	%
Alaska Native/American Indian	3	238	67.04%	117	32.96%
	4	233	72.59%	88	27.41%
	5	222	72.55%	84	27.45%
	6	238	73.68%	85	26.32%
	7	202	72.14%	78	27.86%
	8	246	73.21%	90	26.79%
	9	189	70.00%	81	30.00%
	10	172	66.41%	87	33.59%
GRADE	Total	1,740	71.02%	710	28.98%

		Reading Proficiency			
		Proficient		Not Proficient	
		N	%	N	%
White	3	1,500	88.39%	197	11.61%
	4	1,512	91.03%	149	8.97%
	5	1,579	91.86%	140	8.14%
	6	1,574	91.94%	138	8.06%
	7	1,646	89.95%	184	10.05%
	8	1,726	91.86%	153	8.14%
	9	1,763	92.99%	133	7.01%
	10	1,763	91.68%	160	8.32%
GRADE	Total	13,063	91.24%	1,254	8.76%

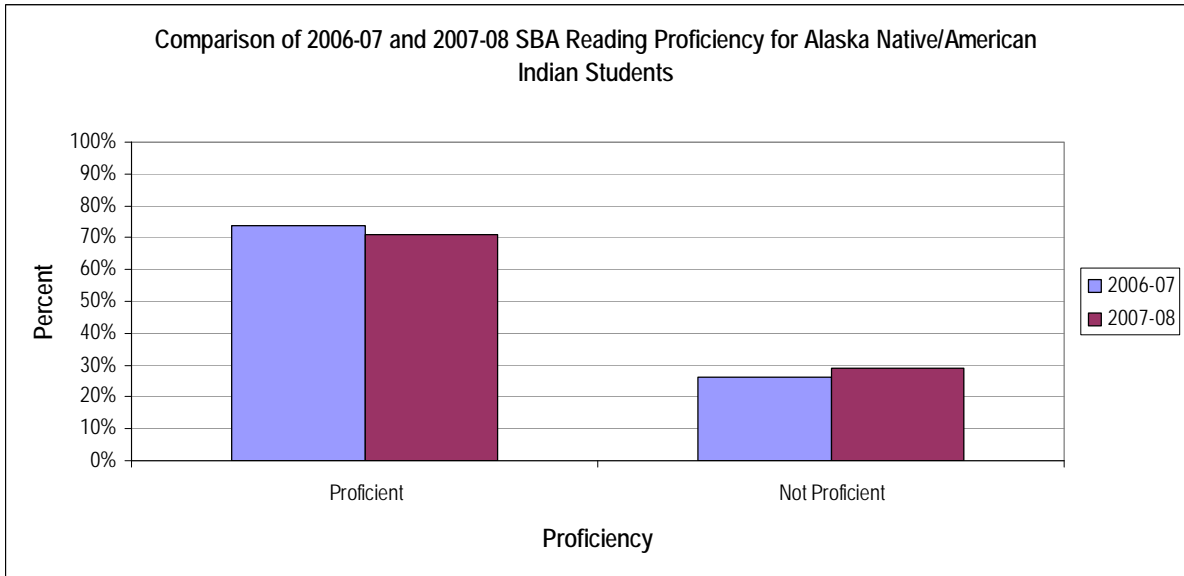
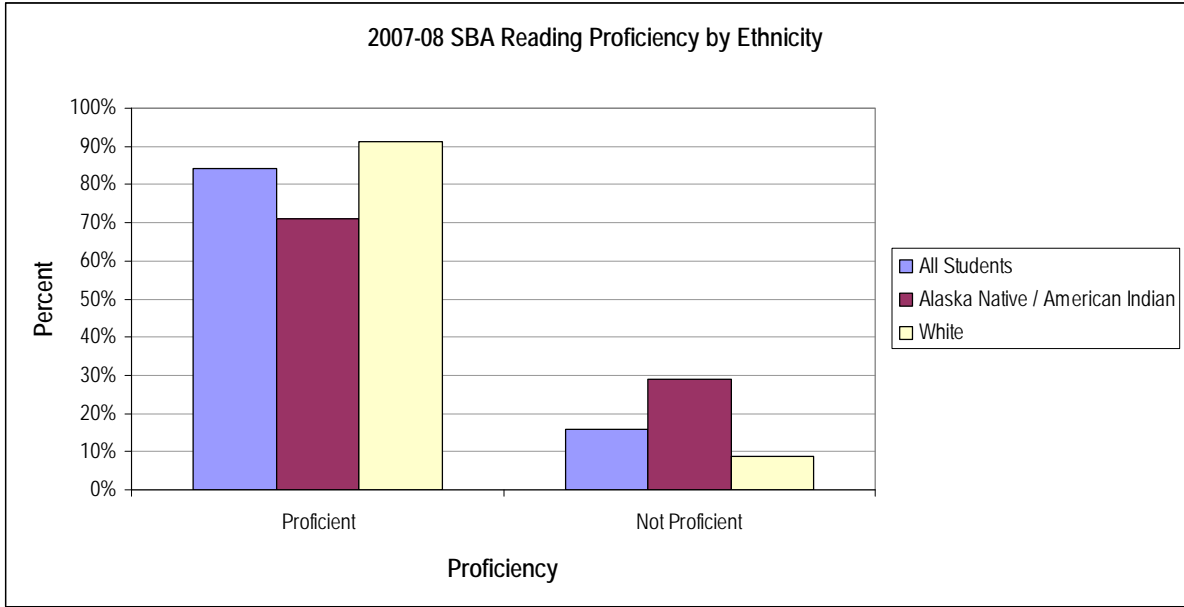
		Reading Proficiency			
		Proficient		Not Proficient	
		N	%	N	%
All Students	3	2,963	80.93%	698	19.07%
	4	2,891	83.99%	551	16.01%
	5	2,954	85.06%	519	14.94%
	6	2,954	84.54%	540	15.46%
	7	2,985	83.99%	569	16.01%
	8	3,141	86.29%	499	13.71%
	9	3,101	86.60%	480	13.40%
	10	2,908	82.94%	598	17.06%
GRADE	Total	23,897	84.29%	4,454	15.71%

2006-07 SBA Reading Proficiency for Alaska Native/American Indian, White and All Students

Alaska Native/American Indian		Reading Proficiency			
		Proficient		Not Proficient	
		N	%	N	%
	3	372	75.46%	121	24.54%
	4	355	71.72%	140	28.28%
	5	373	77.07%	111	22.93%
	6	348	75.49%	113	24.51%
	7	330	66.80%	164	33.20%
	8	371	76.49%	114	23.51%
	9	340	73.43%	123	26.57%
	10	312	75.18%	103	24.82%
GRADE	Total	2801	73.91%	989	26.09%

White		Reading Proficiency			
		Proficient		Not Proficient	
		N	%	N	%
	3	1578	88.45%	206	11.55%
	4	1652	90.37%	176	9.63%
	5	1690	92.35%	140	7.65%
	6	1772	91.53%	164	8.47%
	7	1817	91.40%	171	8.60%
	8	1900	93.87%	124	6.13%
	9	1999	91.78%	179	8.22%
	10	1895	93.77%	126	6.23%
GRADE	Total	14303	91.75%	1286	8.25%

All Students		Reading Proficiency			
		Proficient		Not Proficient	
		N	%	N	%
	3	2907	83.06%	593	16.94%
	4	2953	83.82%	570	16.18%
	5	3011	86.42%	473	13.58%
	6	3024	84.82%	541	15.18%
	7	3083	84.07%	584	15.93%
	8	3260	88.35%	430	11.65%
	9	3177	85.33%	546	14.67%
	10	2986	86.03%	485	13.97%
GRADE	Total	24401	85.25%	4222	14.75%



Attachment 3: SBA Writing Performance Levels and Proficiency

2007-08 SBA Writing Performance Level for Alaska Native/American Indian, White and All Students

Alaska Native/American Indian		Writing Performance Level							
		Advanced		Proficient		Below		Far Below	
		N	%	N	%	N	%	N	%
GRADE	3	64	18.08%	154	43.50%	117	33.05%	19	5.37%
	4	56	17.61%	150	47.17%	101	31.76%	11	3.46%
	5	40	13.07%	147	48.04%	113	36.93%	6	1.96%
	6	63	19.57%	138	42.86%	103	31.99%	18	5.59%
	7	18	6.41%	135	48.04%	98	34.88%	30	10.68%
	8	5	1.48%	180	53.25%	94	27.81%	59	17.46%
	9	5	1.85%	135	50.00%	86	31.85%	44	16.30%
	10	1	0.37%	154	56.41%	86	31.50%	32	11.72%
	Total	252	10.24%	1,193	48.46%	798	32.41%	219	8.90%

White		Writing Performance Level							
		Advanced		Proficient		Below		Far Below	
		N	%	N	%	N	%	N	%
GRADE	3	798	47.02%	672	39.60%	197	11.61%	30	1.77%
	4	775	46.57%	714	42.91%	167	10.04%	8	0.48%
	5	725	42.25%	782	45.57%	206	12.00%	3	0.17%
	6	814	47.57%	677	39.57%	194	11.34%	26	1.52%
	7	360	19.67%	1,140	62.30%	260	14.21%	70	3.83%
	8	242	12.85%	1,327	70.44%	236	12.53%	79	4.19%
	9	242	12.79%	1,403	74.15%	185	9.78%	62	3.28%
	10	157	8.12%	1,512	78.22%	219	11.33%	45	2.33%
	Total	4,113	28.71%	8,227	57.42%	1,664	11.61%	323	2.25%

All Students		Writing Performance Level							
		Advanced		Proficient		Below		Far Below	
		N	%	N	%	N	%	N	%
GRADE	3	1,322	36.10%	1,532	41.84%	699	19.09%	109	2.98%
	4	1,199	34.83%	1,621	47.09%	588	17.08%	34	0.99%
	5	1,126	32.50%	1,612	46.52%	709	20.46%	18	0.52%
	6	1,257	35.97%	1,459	41.75%	645	18.45%	134	3.83%
	7	521	14.64%	2,101	59.03%	722	20.29%	215	6.04%
	8	333	9.14%	2,415	66.27%	623	17.10%	273	7.49%
	9	299	8.38%	2,460	68.93%	583	16.34%	227	6.36%
	10	205	5.82%	2,495	70.82%	640	18.17%	183	5.19%
	Total	6,262	22.08%	15,695	55.34%	5,209	18.37%	1,193	4.21%

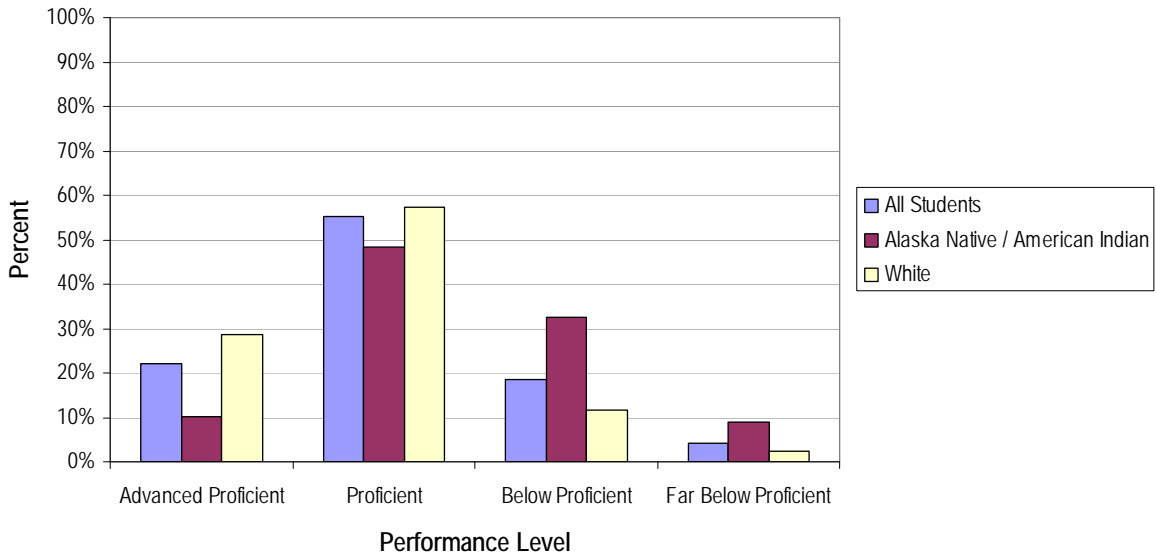
2006-07 SBA Writing Performance Level for Alaska Native/American Indian, White and All Students

Alaska Native/American Indian		Writing Performance Level							
		Advanced		Proficient		Below		Far Below	
		N	%	N	%	N	%	N	%
GRADE	3	120	24.49%	226	46.12%	119	24.29%	25	5.10%
	4	84	16.94%	260	52.42%	143	28.83%	9	1.81%
	5	95	19.79%	235	48.96%	145	30.21%	5	1.04%
	6	96	20.82%	208	45.12%	123	26.68%	34	7.38%
	7	25	5.10%	236	48.16%	156	31.84%	73	14.90%
	8	12	2.46%	260	53.39%	140	28.75%	75	15.40%
	9	12	2.59%	260	56.16%	130	28.08%	61	13.17%
	10	10	2.46%	245	60.20%	120	29.48%	32	7.86%
	Total	454	12.03%	1930	51.14%	1076	28.51%	314	8.32%

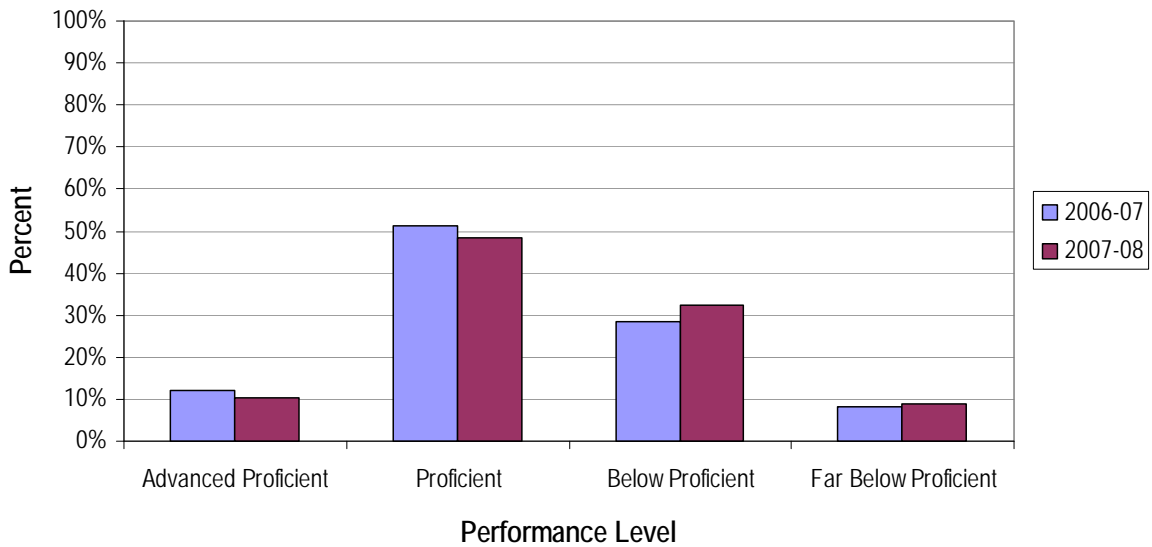
White		Writing Performance Level							
		Advanced		Proficient		Below		Far Below	
		N	%	N	%	N	%	N	%
GRADE	3	915	51.75%	621	35.12%	207	11.71%	25	1.41%
	4	845	46.20%	786	42.97%	190	10.39%	8	0.44%
	5	749	40.95%	834	45.60%	239	13.07%	7	0.38%
	6	975	50.36%	710	36.67%	228	11.78%	23	1.19%
	7	366	18.48%	1274	64.34%	273	13.79%	67	3.38%
	8	291	14.37%	1438	71.01%	230	11.36%	66	3.26%
	9	278	12.77%	1563	71.80%	247	11.35%	89	4.09%
	10	93	4.56%	1703	83.56%	192	9.42%	50	2.45%
	Total	4512	28.96%	8929	57.30%	1806	11.59%	335	2.15%

All Students		Writing Performance Level							
		Advanced		Proficient		Below		Far Below	
		N	%	N	%	N	%	N	%
GRADE	3	1454	41.85%	1348	38.80%	593	17.07%	79	2.27%
	4	1249	35.46%	1632	46.34%	607	17.23%	34	0.97%
	5	1133	32.58%	1642	47.21%	684	19.67%	19	0.55%
	6	1418	39.75%	1387	38.88%	636	17.83%	126	3.53%
	7	489	13.36%	2206	60.27%	730	19.95%	235	6.42%
	8	357	9.67%	2491	67.45%	621	16.82%	224	6.07%
	9	344	9.24%	2508	67.35%	616	16.54%	256	6.87%
	10	123	3.55%	2659	76.72%	537	15.49%	147	4.24%
	Total	6567	22.97%	15873	55.53%	5024	17.58%	1120	3.92%

2007-08 SBA Writing Performance Level by Ethnicity



Comparison of 2006-07 and 2007-08 SBA Writing Performance Level for Alaska Native/American Indian Students



2007-08 SBA Writing Proficiency for Alaska Native/American Indian, White and All Students

		Writing Proficiency			
		Proficient		Not Proficient	
		N	%	N	%
Alaska Native/American Indian					
GRADE	3	218	61.58%	136	38.42%
	4	206	64.78%	112	35.22%
	5	187	61.11%	119	38.89%
	6	201	62.42%	121	37.58%
	7	153	54.45%	128	45.55%
	8	185	54.73%	153	45.27%
	9	140	51.85%	130	48.15%
	10	155	56.78%	118	43.22%
	Total	1,445	58.69%	1,017	41.31%

		Writing Proficiency			
		Proficient		Not Proficient	
		N	%	N	%
White					
GRADE	3	1,470	86.62%	227	13.38%
	4	1,489	89.48%	175	10.52%
	5	1,507	87.82%	209	12.18%
	6	1,491	87.14%	220	12.86%
	7	1,500	81.97%	330	18.03%
	8	1,569	83.28%	315	16.72%
	9	1,645	86.95%	247	13.05%
	10	1,669	86.34%	264	13.66%
	Total	12,340	86.13%	1,987	13.87%

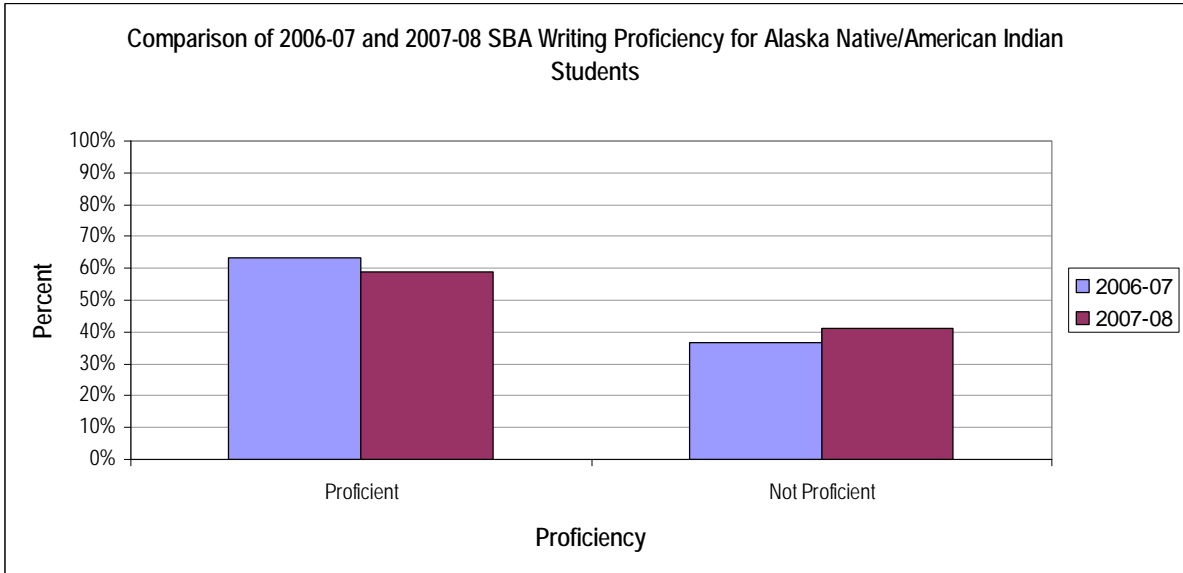
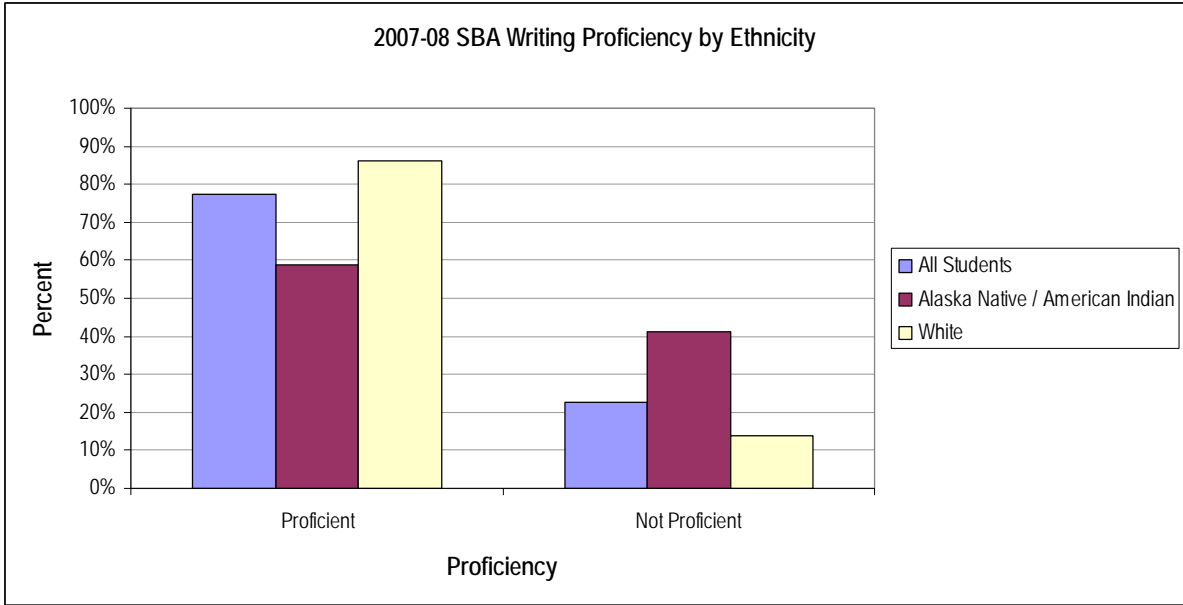
		Writing Proficiency			
		Proficient		Not Proficient	
		N	%	N	%
All Students					
GRADE	3	2,854	77.94%	808	22.06%
	4	2,820	81.93%	622	18.07%
	5	2,738	79.02%	727	20.98%
	6	2,716	77.71%	779	22.29%
	7	2,622	73.67%	937	26.33%
	8	2,748	75.41%	896	24.59%
	9	2,759	77.30%	810	22.70%
	10	2,700	76.64%	823	23.36%
	Total	21,957	77.43%	6,402	22.57%

2006-07 SBA Writing Proficiency for Alaska Native/American Indian, White and All Students

Alaska Native/American Indian		Writing Proficiency			
		Proficient		Not Proficient	
		N	%	N	%
GRADE	3	346	70.61%	144	29.39%
	4	344	69.35%	152	30.65%
	5	330	68.75%	150	31.25%
	6	304	65.94%	157	34.06%
	7	261	53.27%	229	46.73%
	8	272	55.85%	215	44.15%
	9	272	58.75%	191	41.25%
	10	255	62.65%	152	37.35%
	Total	2384	63.17%	1390	36.83%

White		Writing Proficiency			
		Proficient		Not Proficient	
		N	%	N	%
GRADE	3	1536	86.88%	232	13.12%
	4	1631	89.17%	198	10.83%
	5	1583	86.55%	246	13.45%
	6	1685	87.04%	251	12.96%
	7	1640	82.83%	340	17.17%
	8	1729	85.38%	296	14.62%
	9	1841	84.57%	336	15.43%
	10	1796	88.13%	242	11.87%
	Total	13441	86.26%	2141	13.74%

All Students		Writing Proficiency			
		Proficient		Not Proficient	
		N	%	N	%
GRADE	3	2802	80.66%	672	19.34%
	4	2881	81.80%	641	18.20%
	5	2775	79.79%	703	20.21%
	6	2805	78.64%	762	21.36%
	7	2695	73.63%	965	26.37%
	8	2848	77.12%	845	22.88%
	9	2852	76.58%	872	23.42%
	10	2782	80.27%	684	19.73%
	Total	22440	78.51%	6144	21.49%



Attachment 4: SBA Mathematics Performance Levels and Proficiency

2007-08 SBA Mathematics Performance Level for Alaska Native/American Indian, White and All Students

Alaska Native/American Indian		Mathematics Performance Level							
		Advanced		Proficient		Below		Far Below	
		N	%	N	%	N	%	N	%
GRADE	3	71	19.56%	156	42.98%	63	17.36%	73	20.11%
	4	64	20.00%	133	41.56%	66	20.63%	57	17.81%
	5	85	27.78%	103	33.66%	71	23.20%	47	15.36%
	6	83	26.18%	124	39.12%	51	16.09%	59	18.61%
	7	51	18.35%	90	32.37%	87	31.29%	50	17.99%
	8	59	17.51%	124	36.80%	67	19.88%	87	25.82%
	9	42	15.73%	94	35.21%	64	23.97%	67	25.09%
	10	27	10.38%	102	39.23%	65	25.00%	66	25.38%
	Total	482	19.69%	926	37.83%	534	21.81%	506	20.67%

White		Mathematics Performance Level							
		Advanced		Proficient		Below		Far Below	
		N	%	N	%	N	%	N	%
GRADE	3	824	48.47%	684	40.24%	87	5.12%	105	6.18%
	4	807	48.50%	610	36.66%	140	8.41%	107	6.43%
	5	987	57.48%	492	28.65%	171	9.96%	67	3.90%
	6	853	49.91%	601	35.17%	173	10.12%	82	4.80%
	7	777	42.48%	696	38.05%	246	13.45%	110	6.01%
	8	713	38.13%	729	38.98%	270	14.44%	158	8.45%
	9	876	46.42%	617	32.70%	260	13.78%	134	7.10%
	10	556	28.81%	914	47.36%	301	15.60%	159	8.24%
	Total	6,393	44.69%	5,343	37.35%	1,648	11.52%	922	6.44%

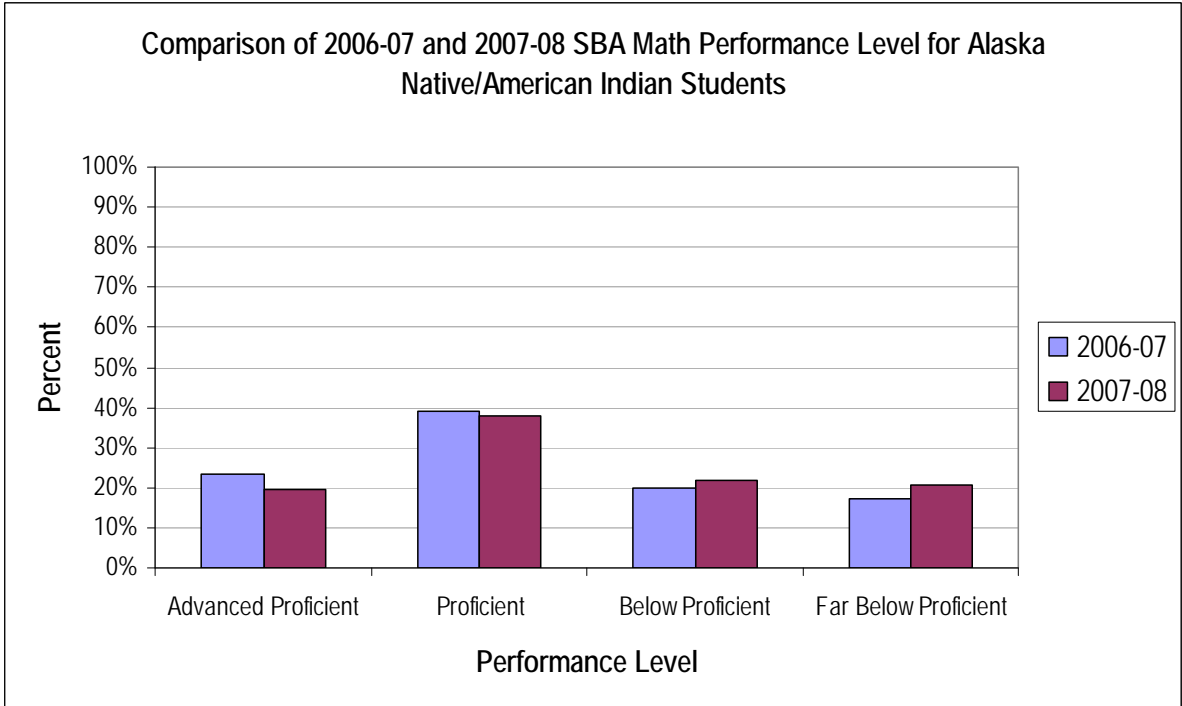
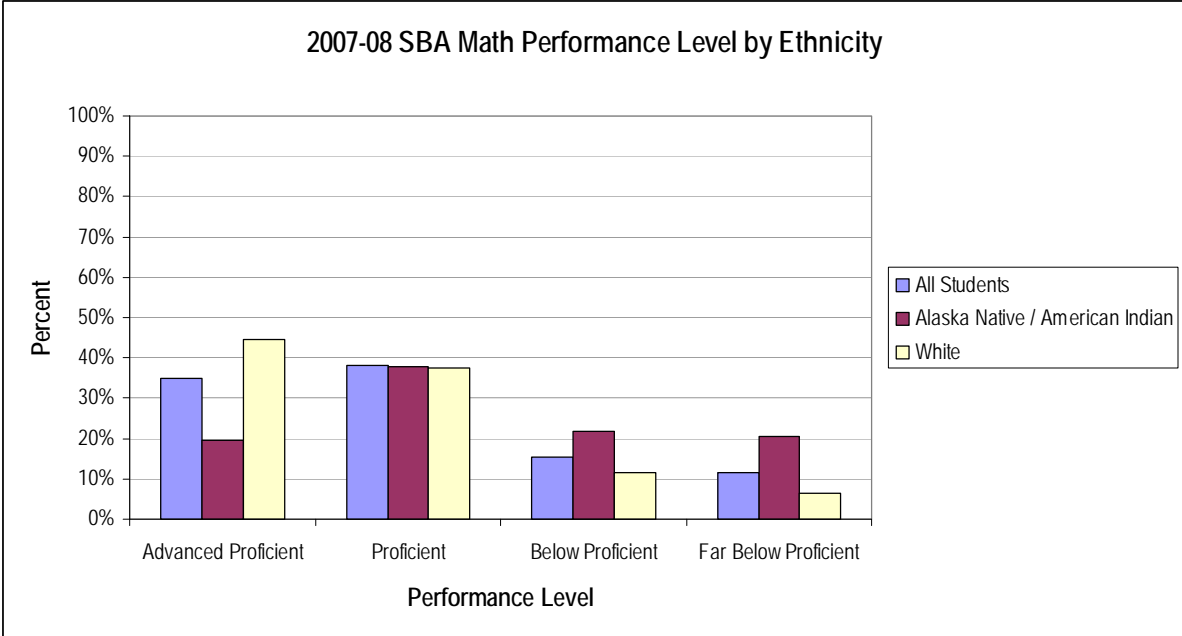
All Students		Mathematics Performance Level							
		Advanced		Proficient		Below		Far Below	
		N	%	N	%	N	%	N	%
GRADE	3	1,320	35.78%	1,589	43.07%	343	9.30%	437	11.85%
	4	1,301	37.61%	1,358	39.26%	423	12.23%	377	10.90%
	5	1,608	46.26%	1,085	31.21%	513	14.76%	270	7.77%
	6	1,394	39.84%	1,312	37.50%	481	13.75%	312	8.92%
	7	1,182	33.21%	1,336	37.54%	673	18.91%	368	10.34%
	8	1,071	29.49%	1,432	39.43%	612	16.85%	517	14.23%
	9	1,300	36.63%	1,191	33.56%	600	16.91%	458	12.91%
	10	751	21.46%	1,557	44.49%	692	19.77%	500	14.29%
	Total	9,927	35.00%	10,860	38.29%	4,337	15.29%	3,239	11.42%

2006-07 SBA Mathematics Performance Level for Alaska Native/American Indian, White and All Students

Alaska Native/American Indian		Mathematics Performance Level							
		Advanced		Proficient		Below		Far Below	
		N	%	N	%	N	%	N	%
GRADE	3	118	24.03%	244	49.69%	60	12.22%	69	14.05%
	4	122	24.60%	202	40.73%	86	17.34%	86	17.34%
	5	185	38.54%	158	32.92%	86	17.92%	51	10.63%
	6	142	30.60%	166	35.78%	90	19.40%	66	14.22%
	7	93	18.90%	179	36.38%	125	25.41%	95	19.31%
	8	81	16.77%	205	42.44%	95	19.67%	102	21.12%
	9	100	21.93%	141	30.92%	103	22.59%	112	24.56%
	10	42	10.40%	183	45.30%	105	25.99%	74	18.32%
	Total	883	23.45%	1478	39.25%	750	19.92%	655	17.39%

White		Mathematics Performance Level							
		Advanced		Proficient		Below		Far Below	
		N	%	N	%	N	%	N	%
GRADE	3	867	49.07%	693	39.22%	118	6.68%	89	5.04%
	4	918	50.38%	628	34.47%	154	8.45%	122	6.70%
	5	1076	58.83%	518	28.32%	165	9.02%	70	3.83%
	6	942	48.63%	724	37.38%	190	9.81%	81	4.18%
	7	799	40.31%	802	40.46%	261	13.17%	120	6.05%
	8	881	43.59%	797	39.44%	208	10.29%	135	6.68%
	9	1009	46.41%	697	32.06%	277	12.74%	191	8.79%
	10	564	27.87%	1100	54.35%	243	12.01%	117	5.78%
	Total	7056	45.36%	5959	38.31%	1616	10.39%	925	5.95%

All Students		Mathematics Performance Level							
		Advanced		Proficient		Below		Far Below	
		N	%	N	%	N	%	N	%
GRADE	3	1362	39.09%	1477	42.39%	323	9.27%	322	9.24%
	4	1407	39.80%	1329	37.60%	413	11.68%	386	10.92%
	5	1708	49.00%	1088	31.21%	455	13.05%	235	6.74%
	6	1472	41.11%	1347	37.62%	464	12.96%	298	8.32%
	7	1210	32.95%	1461	39.79%	621	16.91%	380	10.35%
	8	1222	33.07%	1528	41.35%	513	13.88%	432	11.69%
	9	1389	37.44%	1192	32.13%	587	15.82%	542	14.61%
	10	732	21.19%	1779	51.49%	571	16.53%	373	10.80%
	Total	10502	36.70%	11201	39.14%	3947	13.79%	2968	10.37%



2007-08 SBA Mathematics Proficiency for Alaska Native/American Indian, White and All Students

Alaska Native/American Indian		Mathematics Proficiency			
		Proficient		Not Proficient	
		N	%	N	%
GRADE	3	227	62.53%	136	37.47%
	4	197	61.56%	123	38.44%
	5	188	61.44%	118	38.56%
	6	207	65.30%	110	34.70%
	7	141	50.72%	137	49.28%
	8	183	54.30%	154	45.70%
	9	136	50.94%	131	49.06%
	10	129	49.62%	131	50.38%
	Total	1,408	57.52%	1,040	42.48%

White		Mathematics Proficiency			
		Proficient		Not Proficient	
		N	%	N	%
GRADE	3	1,508	88.71%	192	11.29%
	4	1,417	85.16%	247	14.84%
	5	1,479	86.14%	238	13.86%
	6	1,454	85.08%	255	14.92%
	7	1,473	80.54%	356	19.46%
	8	1,442	77.11%	428	22.89%
	9	1,493	79.12%	394	20.88%
	10	1,470	76.17%	460	23.83%
	Total	11,736	82.04%	2,570	17.96%

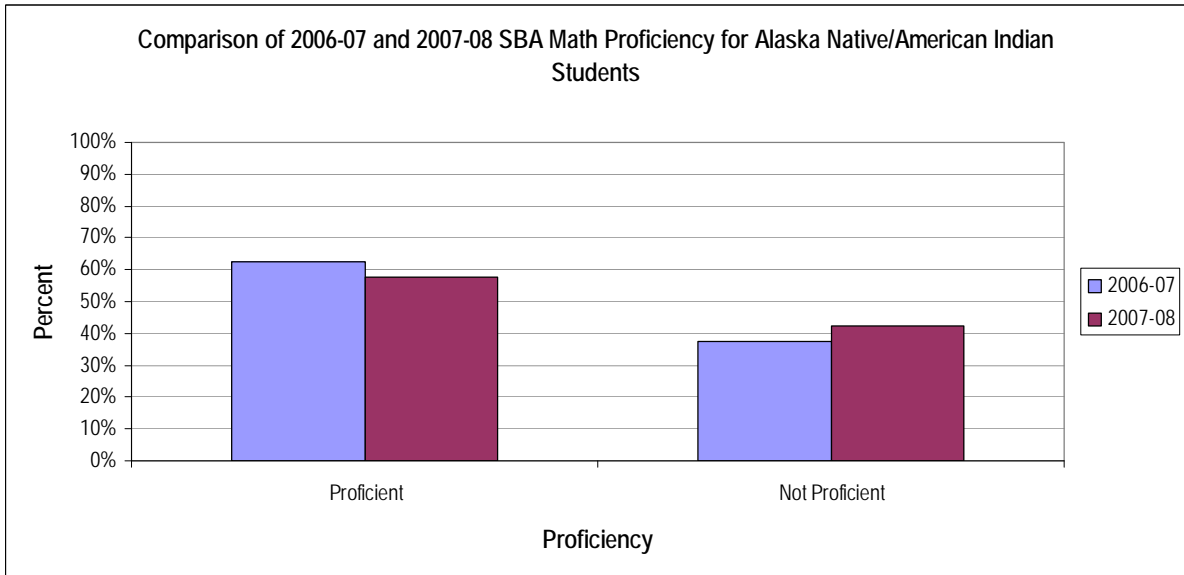
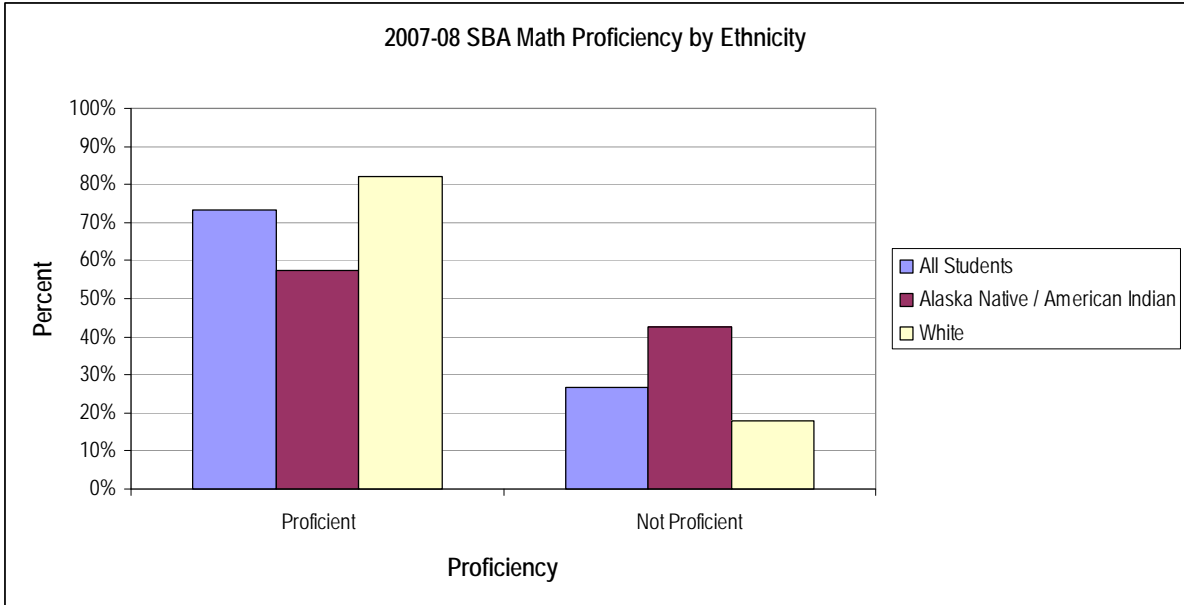
All Students		Mathematics Proficiency			
		Proficient		Not Proficient	
		N	%	N	%
GRADE	3	2,909	78.86%	780	21.14%
	4	2,659	76.87%	800	23.13%
	5	2,693	77.47%	783	22.53%
	6	2,706	77.34%	793	22.66%
	7	2,518	70.75%	1,041	29.25%
	8	2,503	68.92%	1,129	31.08%
	9	2,491	70.19%	1,058	29.81%
	10	2,308	65.94%	1,192	34.06%
	Total	20,787	73.29%	7,576	26.71%

2006-07 SBA Mathematics Proficiency for Alaska Native/American Indian, White and All Students

Alaska Native/American Indian		Mathematics Proficiency			
		Proficient		Not Proficient	
		N	%	N	%
GRADE	3	362	73.73%	129	26.27%
	4	324	65.32%	172	34.68%
	5	343	71.46%	137	28.54%
	6	308	66.38%	156	33.62%
	7	272	55.28%	220	44.72%
	8	286	59.21%	197	40.79%
	9	241	52.85%	215	47.15%
	10	225	55.69%	179	44.31%
	Total	2361	62.69%	1405	37.31%

White		Mathematics Proficiency			
		Proficient		Not Proficient	
		N	%	N	%
GRADE	3	1560	88.29%	207	11.71%
	4	1546	84.85%	276	15.15%
	5	1594	87.15%	235	12.85%
	6	1666	86.01%	271	13.99%
	7	1601	80.78%	381	19.22%
	8	1678	83.03%	343	16.97%
	9	1706	78.47%	468	21.53%
	10	1664	82.21%	360	17.79%
	Total	13015	83.67%	2541	16.33%

All Students		Mathematics Proficiency			
		Proficient		Not Proficient	
		N	%	N	%
GRADE	3	2839	81.49%	645	18.51%
	4	2736	77.40%	799	22.60%
	5	2796	80.21%	690	19.79%
	6	2819	78.72%	762	21.28%
	7	2671	72.74%	1001	27.26%
	8	2750	74.42%	945	25.58%
	9	2581	69.57%	1129	30.43%
	10	2511	72.68%	944	27.32%
	Total	21703	75.84%	6915	24.16%



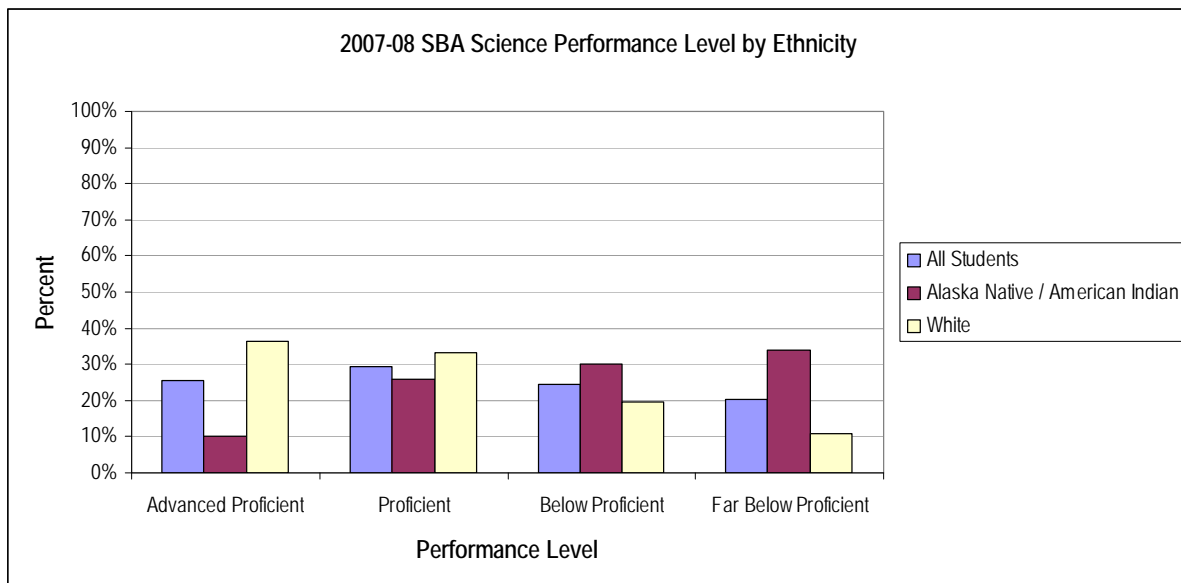
Attachment 5: SBA Science Performance Levels and Proficiency

2007-08 SBA Science Performance Level for Alaska Native/American Indian, White and All Students

Alaska Native/American Indian		Science Performance Level							
		Advanced		Proficient		Below		Far Below	
		N	%	N	%	N	%	N	%
GRADE	4	21	6.54%	69	21.50%	138	42.99%	93	28.97%
	8	34	10.33%	85	25.84%	72	21.88%	138	41.95%
	10	36	14.57%	78	31.58%	60	24.29%	73	29.55%
	Total	91	10.14%	232	25.86%	270	30.10%	304	33.89%

White		Science Performance Level							
		Advanced		Proficient		Below		Far Below	
		N	%	N	%	N	%	N	%
GRADE	4	602	36.40%	481	29.08%	419	25.33%	152	9.19%
	8	705	38.15%	549	29.71%	329	17.80%	265	14.34%
	10	652	34.53%	752	39.83%	310	16.42%	174	9.22%
	Total	1,959	36.35%	1,782	33.06%	1,058	19.63%	591	10.96%

All Students		Science Performance Level							
		Advanced		Proficient		Below		Far Below	
		N	%	N	%	N	%	N	%
GRADE	4	815	23.68%	880	25.57%	1,091	31.70%	656	19.06%
	8	968	27.02%	947	26.43%	740	20.65%	928	25.90%
	10	881	25.93%	1,242	36.55%	734	21.60%	541	15.92%
	Total	2,664	25.56%	3,069	29.44%	2,565	24.61%	2,125	20.39%

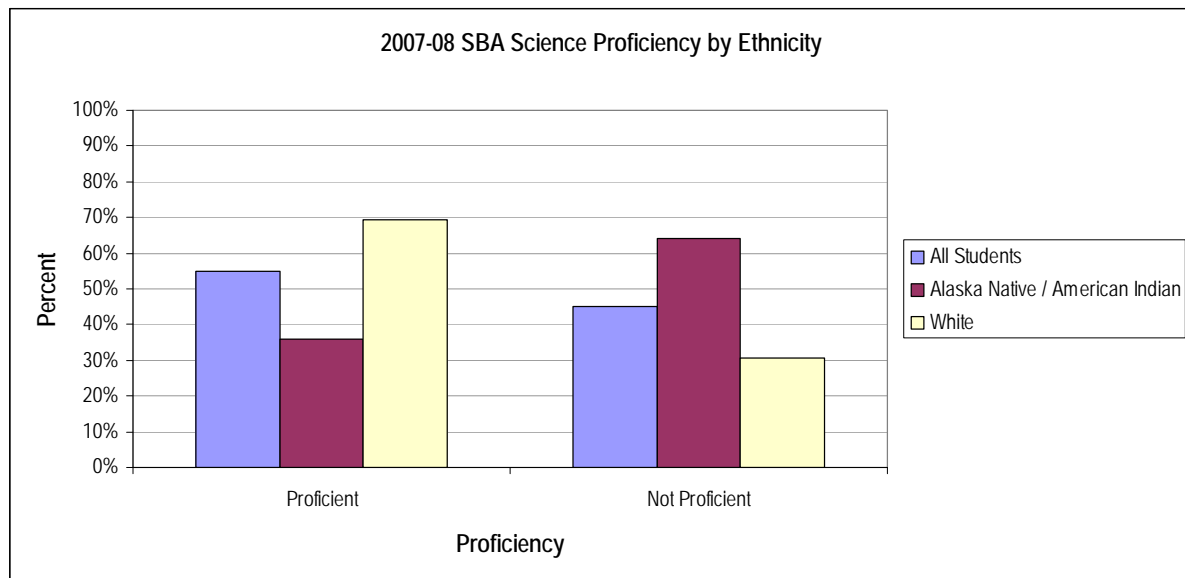


2007-08 SBA Science Proficiency for Alaska Native/American Indian, White and All Students

		Science Proficiency			
		Proficient		Not Proficient	
		N	%	N	%
Alaska Native/American Indian					
GRADE	4	90	28.04%	231	71.96%
	8	119	36.17%	210	63.83%
	10	114	46.15%	133	53.85%
	Total	323	36.01%	574	63.99%

		Science Proficiency			
		Proficient		Not Proficient	
		N	%	N	%
White					
GRADE	4	1,083	65.48%	571	34.52%
	8	1,254	67.86%	594	32.14%
	10	1,404	74.36%	484	25.64%
	Total	3,741	69.41%	1,649	30.59%

		Science Proficiency			
		Proficient		Not Proficient	
		N	%	N	%
All Students					
GRADE	4	1,695	49.24%	1,747	50.76%
	8	1,915	53.45%	1,668	46.55%
	10	2,123	62.48%	1,275	37.52%
	Total	5,733	55.00%	4,690	45.00%



Attachment 6: Change in SBA results from 2006-07 (2007) to 2007-08 (2008)

(Change charts measure those students who tested in both years: for example a student must test in grade 3 during the 2006-07 school year and in grade 4 during the 2007-08 school year in order to be assessed in the change model)

Reading		Average Scale Score of Students Tested in District Both Years			Average Scale Score of Students Tested in District Both Years			Average Scale Score of Students Tested in District Both Years		
		Grade 3 in 2007	Grade 4 in 2008	Difference	Grade 4 in 2007	Grade 5 in 2008	Difference	Grade 5 in 2007	Grade 6 in 2008	Difference
Ethnicity	All Students	379.82	388.19	8.37	385.74	383.46	-2.28	385.67	380.91	-4.76
	AK Native/ American Indian	345.58	348.45	2.88	346.28	343.16	-3.12	357.46	352.69	-4.78
	White	401.32	413.94	12.62	409.85	406.96	-2.89	407.52	402.61	-4.91

Reading		Average Scale Score of Students Tested in District Both Years			Average Scale Score of Students Tested in District Both Years			Average Scale Score of Students Tested in District Both Years		
		Grade 6 in 2007	Grade 7 in 2008	Difference	Grade 7 in 2007	Grade 8 in 2008	Difference	Grade 8 in 2007	Grade 9 in 2008	Difference
Ethnicity	All Students	378.16	375.96	-2.19	376.15	380.66	4.51	387.48	383.28	-4.20
	AK Native/ American Indian	350.42	344.33	-6.09	342.44	347.04	4.60	345.19	343.43	-1.76
	White	398.04	395.55	-2.49	397.39	398.54	1.14	407.51	404.81	-2.69

Reading		Average Scale Score of Students Tested in District Both Years		
		Grade 9 in 2007	Grade 10 in 2008	Difference
Ethnicity	All Students	386.73	366.75	-19.98
	AK Native/ American Indian	357.90	334.17	-23.73
	White	405.41	386.18	-19.22

Writing		Average Scale Score of Students Tested in District Both Years			Average Scale Score of Students Tested in District Both Years			Average Scale Score of Students Tested in District Both Years		
		Grade 3 in 2007	Grade 4 in 2008	Difference	Grade 4 in 2007	Grade 5 in 2008	Difference	Grade 5 in 2007	Grade 6 in 2008	Difference
Ethnicity	All Students	382.98	388.45	5.47	388.68	368.43	-20.25	368.84	370.22	1.39
	AK Native/ American Indian	341.13	344.18	3.05	344.03	326.06	-17.97	339.77	336.96	-2.81
	White	406.47	414.23	7.77	413.54	390.36	-23.17	389.36	393.49	4.13

Writing		Average Scale Score of Students Tested in District Both Years			Average Scale Score of Students Tested in District Both Years			Average Scale Score of Students Tested in District Both Years		
		Grade 6 in 2007	Grade 7 in 2008	Difference	Grade 7 in 2007	Grade 8 in 2008	Difference	Grade 8 in 2007	Grade 9 in 2008	Difference
Ethnicity	All Students	373.22	350.37	-22.86	350.47	355.57	5.10	362.21	361.14	-1.07
	AK Native/ American Indian	332.62	315.19	-17.42	315.57	313.20	-2.37	311.19	313.18	1.99
	White	396.05	367.45	-28.61	370.35	375.01	4.66	384.23	384.07	-0.16

Writing		Average Scale Score of Students Tested in District Both Years		
		Grade 9 in 2007	Grade 10 in 2008	Difference
Ethnicity	All Students	366.35	357.30	-9.05
	AK Native/ American Indian	329.44	317.70	-11.73
	White	385.21	375.18	-10.03

Mathematics		Average Scale Score of Students Tested in District Both Years			Average Scale Score of Students Tested in District Both Years			Average Scale Score of Students Tested in District Both Years		
		Grade 3 in 2007	Grade 4 in 2008	Difference	Grade 4 in 2007	Grade 5 in 2008	Difference	Grade 5 in 2007	Grade 6 in 2008	Difference
Ethnicity	All Students	372.84	360.22	-12.62	362.68	363.46	0.78	369.56	359.17	-10.40
	AK Native/ American Indian	338.94	327.45	-11.49	325.81	327.07	1.26	347.57	335.29	-12.28
	White	394.09	381.09	-13.00	383.47	382.64	-0.84	387.20	376.45	-10.75

Mathematics		Average Scale Score of Students Tested in District Both Years			Average Scale Score of Students Tested in District Both Years			Average Scale Score of Students Tested in District Both Years		
		Grade 6 in 2007	Grade 7 in 2008	Difference	Grade 7 in 2007	Grade 8 in 2008	Difference	Grade 8 in 2007	Grade 9 in 2008	Difference
Ethnicity	All Students	361.56	348.02	-13.54	352.23	341.60	-10.62	352.54	346.87	-5.67
	AK Native/ American Indian	331.46	317.35	-14.11	318.18	311.19	-6.99	313.02	304.60	-8.42
	White	378.16	367.11	-11.05	370.04	359.02	-11.02	372.13	367.86	-4.27

Mathematics		Average Scale Score of Students Tested in District Both Years		
		Grade 9 in 2007	Grade 10 in 2008	Difference
Ethnicity	All Students	350.51	339.96	-10.55
	AK Native/ American Indian	319.55	312.68	-6.87
	White	367.34	357.54	-9.80

Attachment 7: TerraNova Reading Performance by Quartiles

2007-08 TerraNova Reading Quartiles for Alaska Native/American Indian, White and All Students

Alaska Native/American Indian		Reading							
		4th Quartile		3rd Quartile		2nd Quartile		1st Quartile	
		N	%	N	%	N	%	N	%
GRADE	5	25	8.39%	48	16.11%	77	25.84%	148	49.66%
	7	44	16.86%	70	26.82%	90	34.48%	57	21.84%

White		Reading							
		4th Quartile		3rd Quartile		2nd Quartile		1st Quartile	
		N	%	N	%	N	%	N	%
GRADE	5	614	35.80%	487	28.40%	361	21.05%	253	14.75%
	7	748	41.35%	617	34.11%	320	17.69%	124	6.85%

All Students		Reading							
		4th Quartile		3rd Quartile		2nd Quartile		1st Quartile	
		N	%	N	%	N	%	N	%
GRADE	5	883	25.65%	829	24.08%	817	23.73%	914	26.55%
	7	1,051	30.31%	1,127	32.50%	851	24.54%	439	12.66%

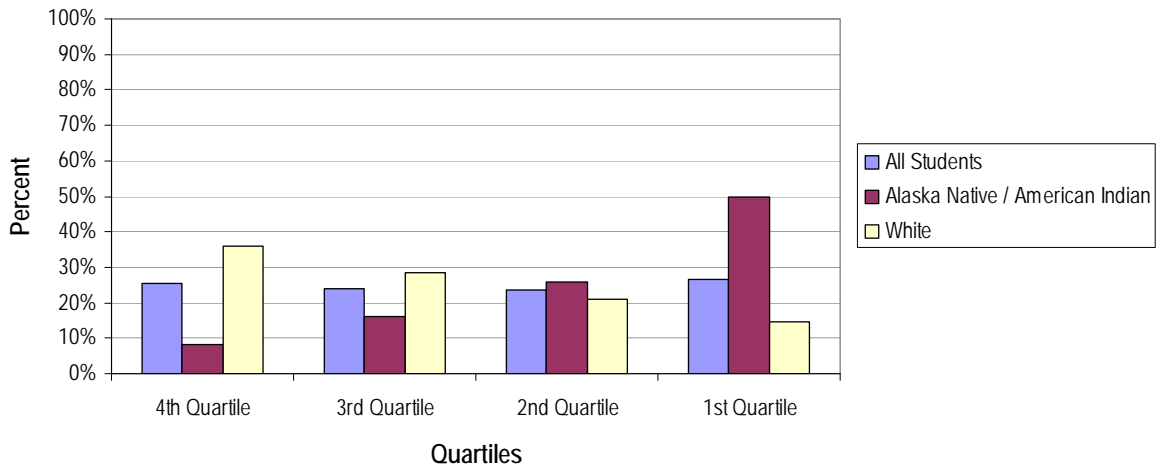
2006-07 TerraNova Reading Quartiles for Alaska Native/American Indian, White and All Students

Alaska Native/American Indian		Reading							
		4th Quartile		3rd Quartile		2nd Quartile		1st Quartile	
		N	%	N	%	N	%	N	%
GRADE	5	95	19.75%	119	24.74%	129	26.82%	138	28.69%
	7	96	20.25%	126	26.58%	118	24.89%	134	28.27%

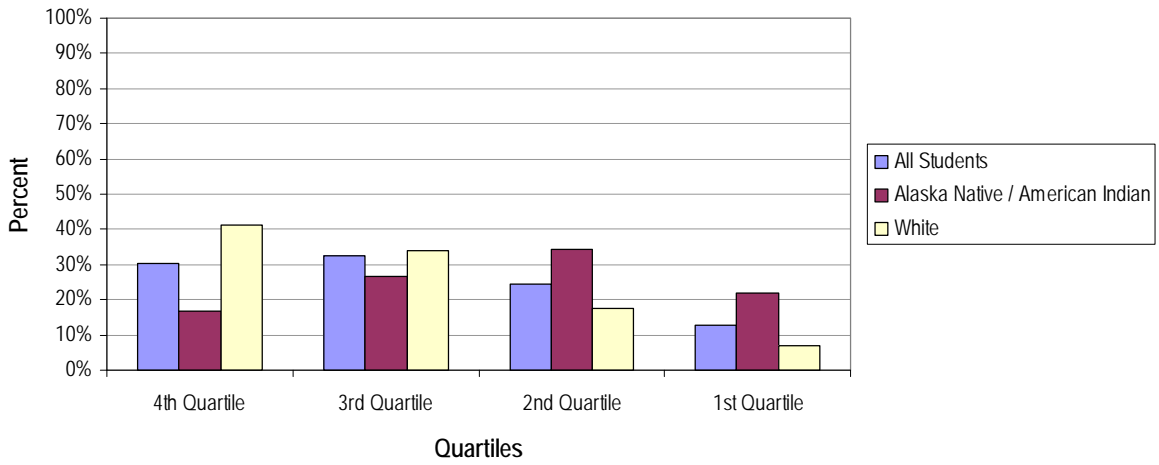
White		Reading							
		4th Quartile		4th Quartile		3rd Quartile		2nd Quartile	
		N	N	%	N	%	N	%	N
GRADE	5	805	44.50%	492	27.20%	341	18.85%	171	9.45%
	7	944	47.58%	549	27.67%	339	17.09%	152	7.66%

All Students		Reading							
		4th Quartile		4th Quartile		3rd Quartile		2nd Quartile	
		N	N	%	N	%	N	%	N
GRADE	5	1,142	33.11%	899	26.07%	814	23.60%	594	17.22%
	7	1,294	35.61%	1,019	28.04%	780	21.46%	541	14.89%

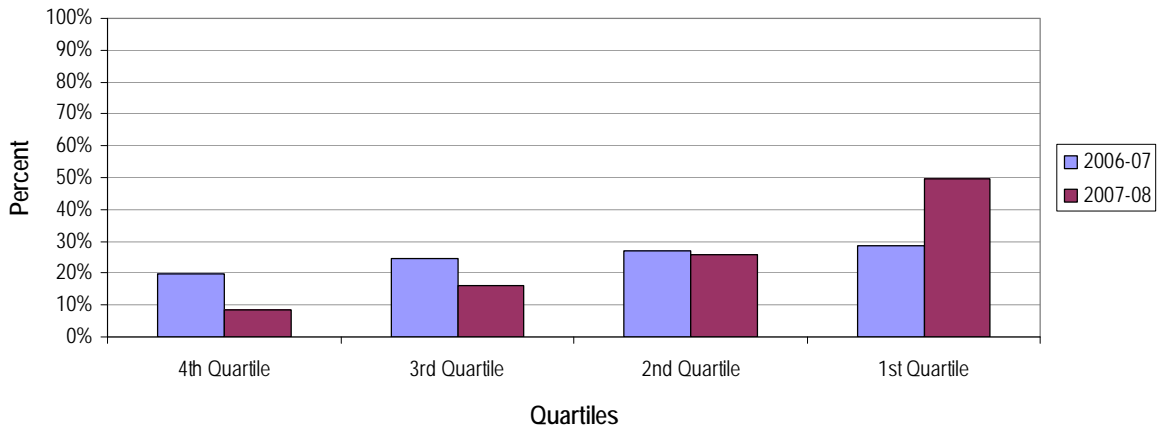
2007-08 Grade 5 TerraNova Reading Quartiles by Ethnicity



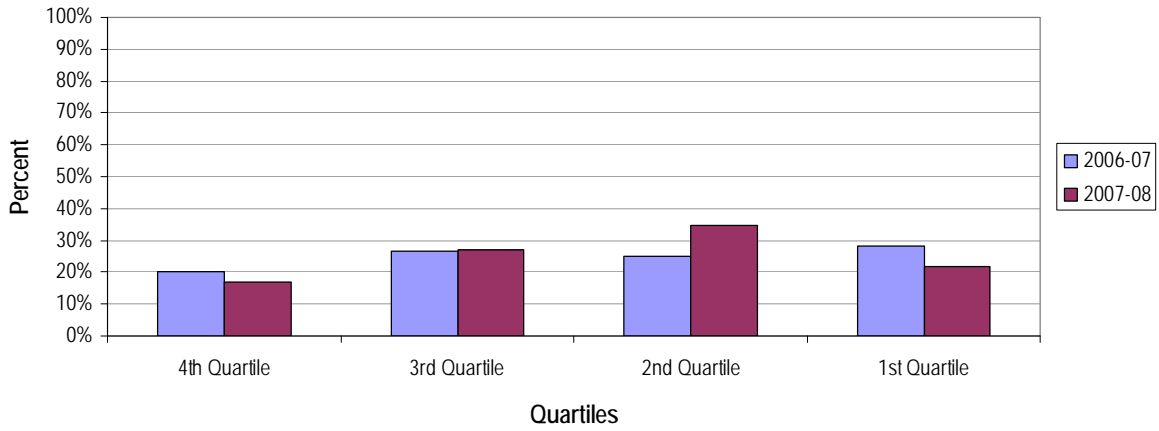
2007-08 Grade 7 TerraNova Reading Quartiles by Ethnicity



Comparison of 2006-07 and 2007-08 Grade 5 TerraNova Reading Quartiles for Alaska Native/American Indian Students



Comparison of 2006-07 and 2007-08 Grade 7 TerraNova Reading Quartiles for Alaska Native/American Indian Students



2007-08 TerraNova Reading Quartile Levels for Alaska Native/American Indian, White and All Students

Alaska Native/American Indian		Reading					
		Above Average		Average		Below Average	
		N	%	N	%	N	%
GRADE	5	25	8.39%	125	41.95%	148	49.66%
	7	44	16.86%	160	61.30%	57	21.84%

White		Reading					
		Above Average		Average		Below Average	
		N	%	N	%	N	%
GRADE	5	614	35.80%	848	49.45%	253	14.75%
	7	748	41.35%	937	51.80%	124	6.85%

All Students		Reading					
		Above Average		Average		Below Average	
		N	%	N	%	N	%
GRADE	5	883	25.65%	1,646	47.81%	914	26.55%
	7	1,051	30.31%	1,978	57.04%	439	12.66%

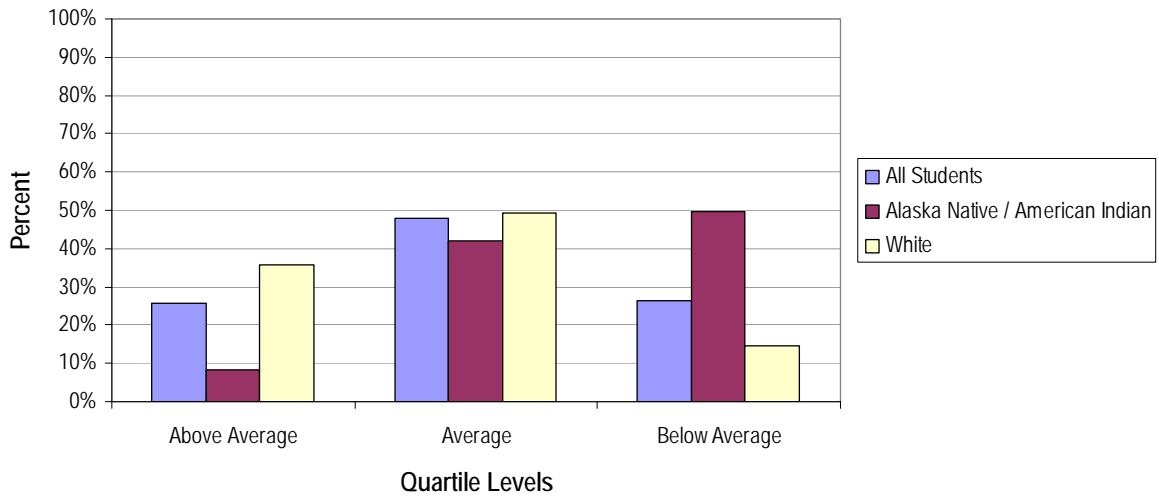
2006-07 TerraNova Reading Quartile Levels for Alaska Native/American Indian, White and All Students

Alaska Native/American Indian		Reading					
		Above Average		Average		Below Average	
		N	%	N	%	N	%
GRADE	5	95	19.75%	248	51.56%	138	28.69%
	7	96	20.25%	244	51.48%	134	28.27%

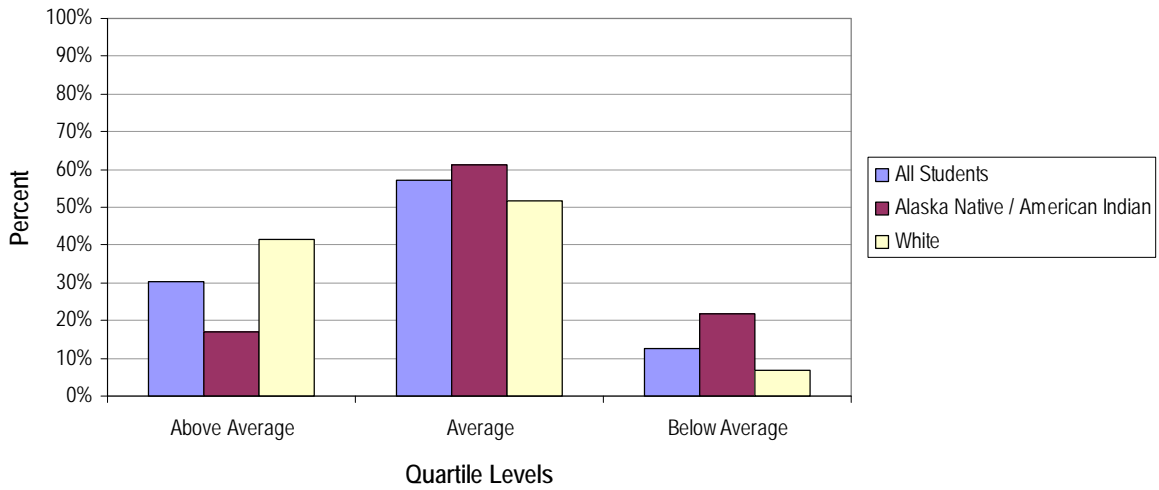
White		Reading					
		Above Average		Average		Below Average	
		N	%	N	%	N	%
GRADE	5	805	44.50%	833	46.05%	171	9.45%
	7	944	47.58%	888	44.76%	152	7.66%

All Students		Reading					
		Above Average		Average		Below Average	
		N	%	N	%	N	%
GRADE	5	1,142	33.11%	1713	49.67%	594	17.22%
	7	1,294	35.61%	1799	49.50%	541	14.89%

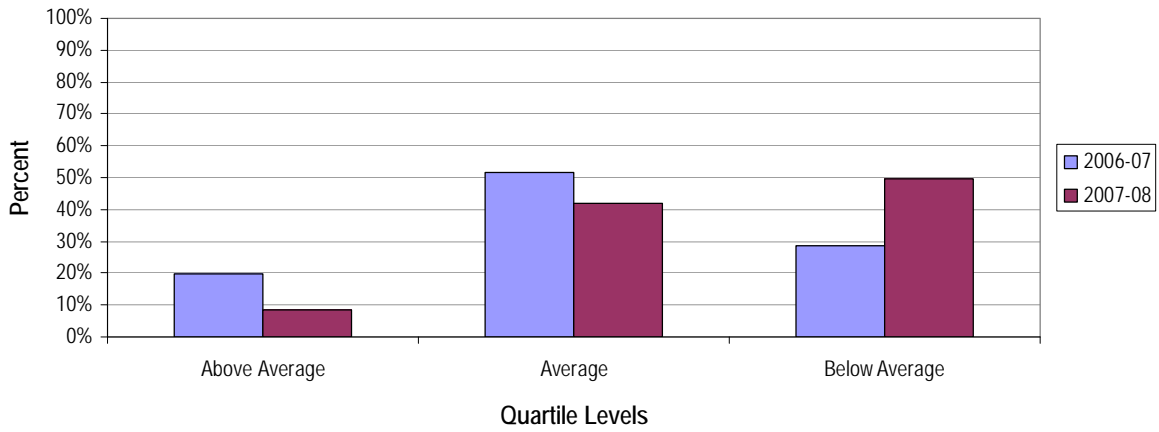
2007-08 Grade 5 TerraNova Reading Quartile Levels by Ethnicity



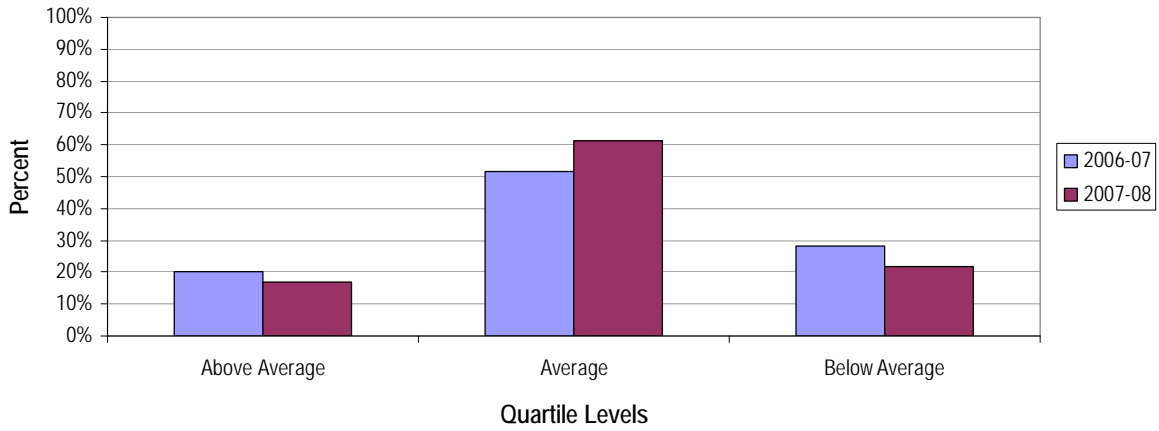
2007-08 Grade 7 TerraNova Reading Quartile Levels by Ethnicity



Comparison of 2006-07 and 2007-08 Grade 5 TerraNova Reading Quartile Levels for Alaska Native/American Indian Students



Comparison of 2006-07 and 2007-08 Grade 7 TerraNova Reading Quartile Levels for Alaska Native/American Indian Students



Attachment 8: TerraNova Language Performance by Quartiles

2007-08 TerraNova Language Quartiles for Alaska Native/American Indian, White and All Students

Alaska Native/American Indian		Language							
		4th Quartile		3rd Quartile		2nd Quartile		1st Quartile	
		N	%	N	%	N	%	N	%
GRADE	5	32	10.70%	54	18.06%	88	29.43%	125	41.81%
	7	40	14.98%	62	23.22%	88	32.96%	77	28.84%

White		Language							
		4th Quartile		3rd Quartile		2nd Quartile		1st Quartile	
		N	%	N	%	N	%	N	%
GRADE	5	628	36.62%	528	30.79%	343	20.00%	216	12.59%
	7	747	40.89%	551	30.16%	368	20.14%	161	8.81%

All Students		Language							
		4th Quartile		3rd Quartile		2nd Quartile		1st Quartile	
		N	%	N	%	N	%	N	%
GRADE	5	923	26.79%	937	27.20%	831	24.12%	754	21.89%
	7	1,063	30.26%	1,027	29.23%	881	25.08%	542	15.43%

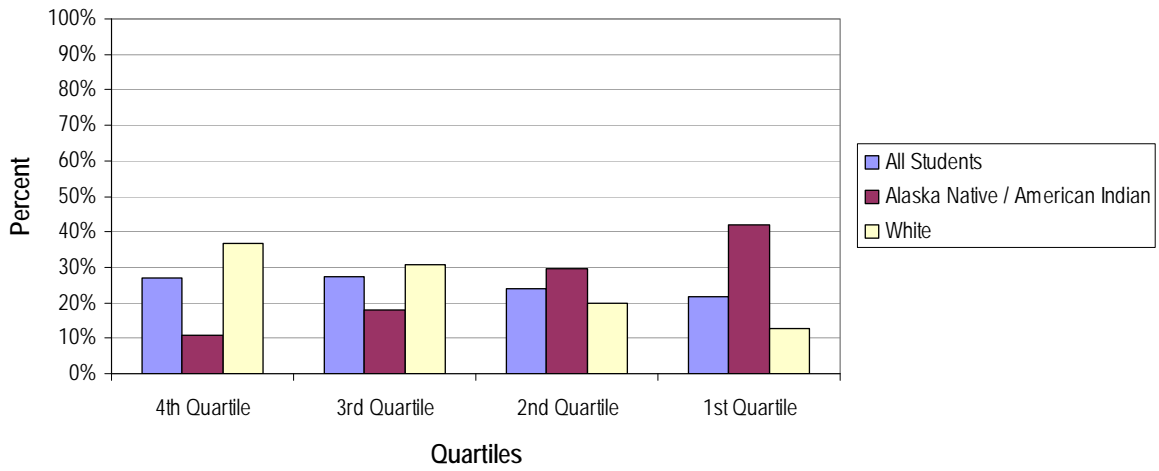
2006-07 TerraNova Language Quartiles for Alaska Native/American Indian, White and All Students

Alaska Native/American Indian		Language							
		4th Quartile		3rd Quartile		2nd Quartile		1st Quartile	
		N	%	N	%	N	%	N	%
GRADE	5	104	21.62%	106	22.04%	133	27.65%	138	28.69%
	7	85	17.97%	124	26.22%	121	25.58%	143	30.23%

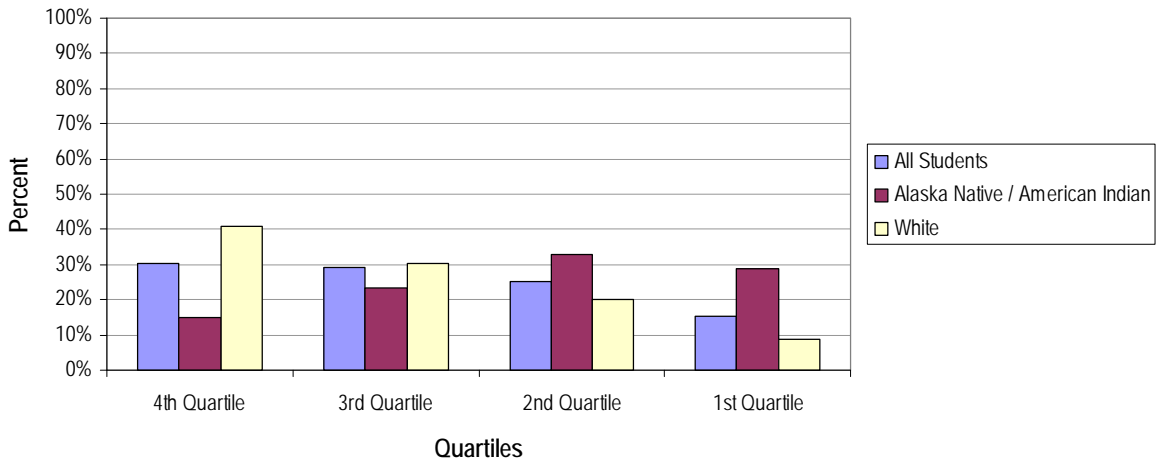
White		Language							
		4th Quartile		3rd Quartile		2nd Quartile		1st Quartile	
		N	%	N	%	N	%	N	%
GRADE	5	830	45.88%	513	28.36%	286	15.81%	180	9.95%
	7	918	46.32%	566	28.56%	341	17.20%	157	7.92%

All Students		Language							
		4th Quartile		3rd Quartile		2nd Quartile		1st Quartile	
		N	%	N	%	N	%	N	%
GRADE	5	1,198	34.73%	928	26.91%	738	21.40%	585	16.96%
	7	1,286	35.42%	1,043	28.72%	782	21.54%	520	14.32%

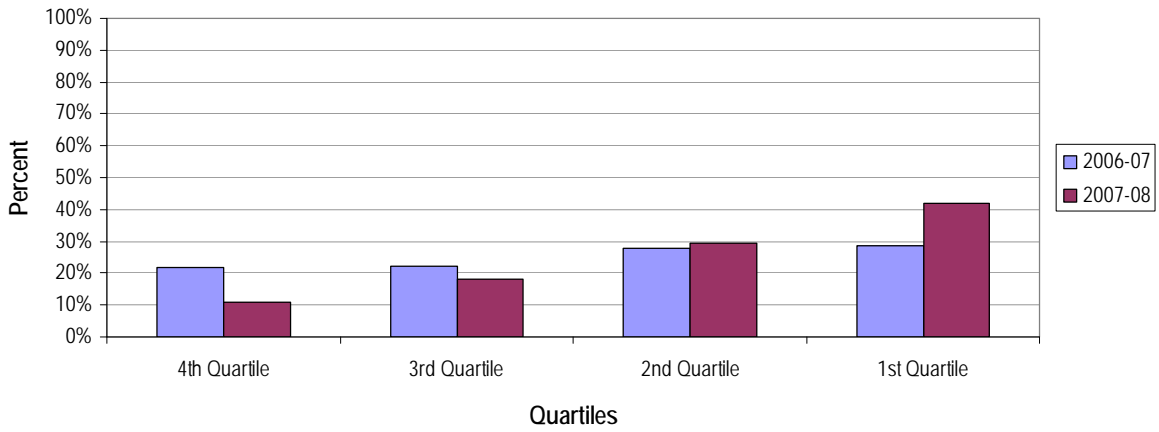
2007-08 Grade 5 TerraNova Language Quartiles by Ethnicity



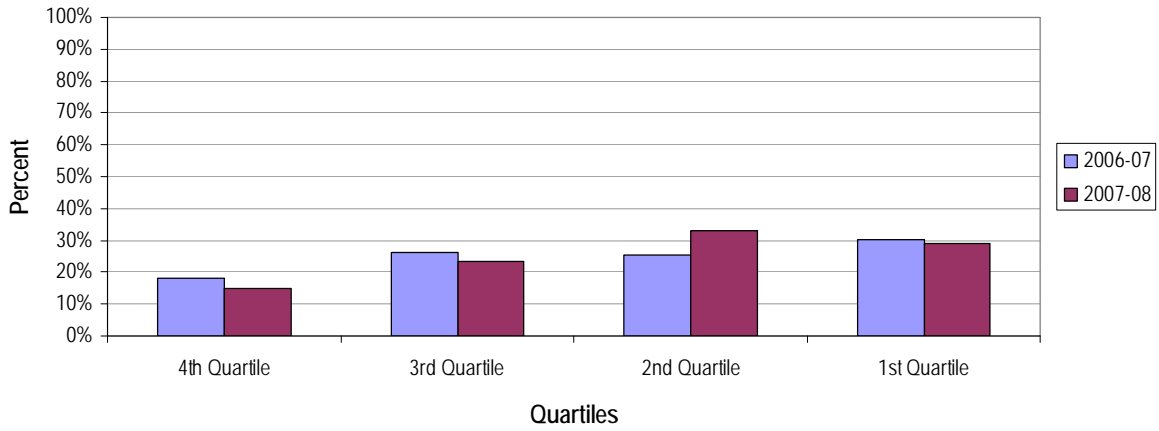
2007-08 Grade 7 TerraNova Language Quartiles by Ethnicity



Comparison of 2006-07 and 2007-08 Grade 5 TerraNova Language Quartiles for Alaska Native/American Indian Students



Comparison of 2006-07 and 2007-08 Grade 7 TerraNova Language Quartiles for Alaska Native/American Indian Students



2007-08 TerraNova Language Quartile Levels for Alaska Native/American Indian, White and All Students

Alaska Native/American Indian		Language					
		Above Average		Average		Below Average	
		N	%	N	%	N	%
GRADE	5	32	10.70%	142	47.49%	125	41.81%
	7	40	14.98%	150	56.18%	77	28.84%

White		Language					
		Above Average		Average		Below Average	
		N	%	N	%	N	%
GRADE	5	628	36.62%	871	50.79%	216	12.59%
	7	747	40.89%	919	50.30%	161	8.81%

All Students		Language					
		Above Average		Average		Below Average	
		N	%	N	%	N	%
GRADE	5	923	26.79%	1,768	51.32%	754	21.89%
	7	1,063	30.26%	1,908	54.31%	542	15.43%

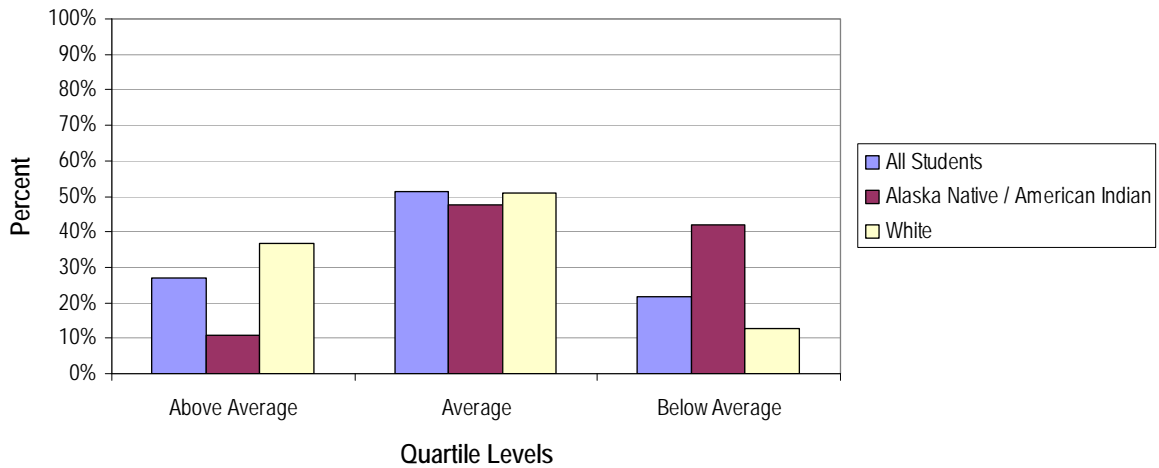
2006-07 TerraNova Language Quartile Levels for Alaska Native/American Indian, White and All Students

Alaska Native/American Indian		Language					
		Above Average		Average		Below Average	
		N	%	N	%	N	%
GRADE	5	104	21.62%	239	49.69%	138	28.69%
	7	85	17.97%	245	51.80%	143	30.23%

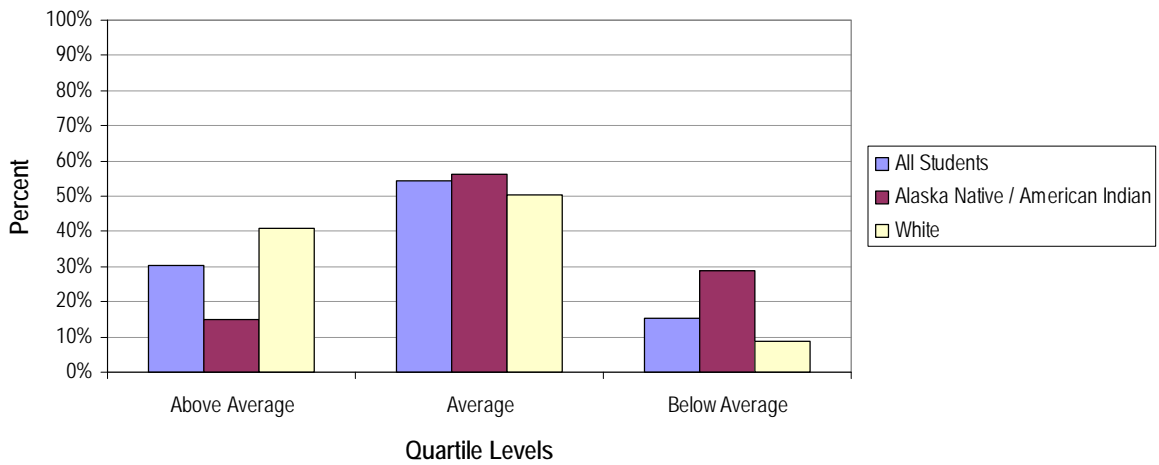
White		Language					
		Above Average		Average		Below Average	
		N	%	N	%	N	%
GRADE	5	830	45.88%	799	44.17%	180	9.95%
	7	918	46.32%	907	45.76%	157	7.92%

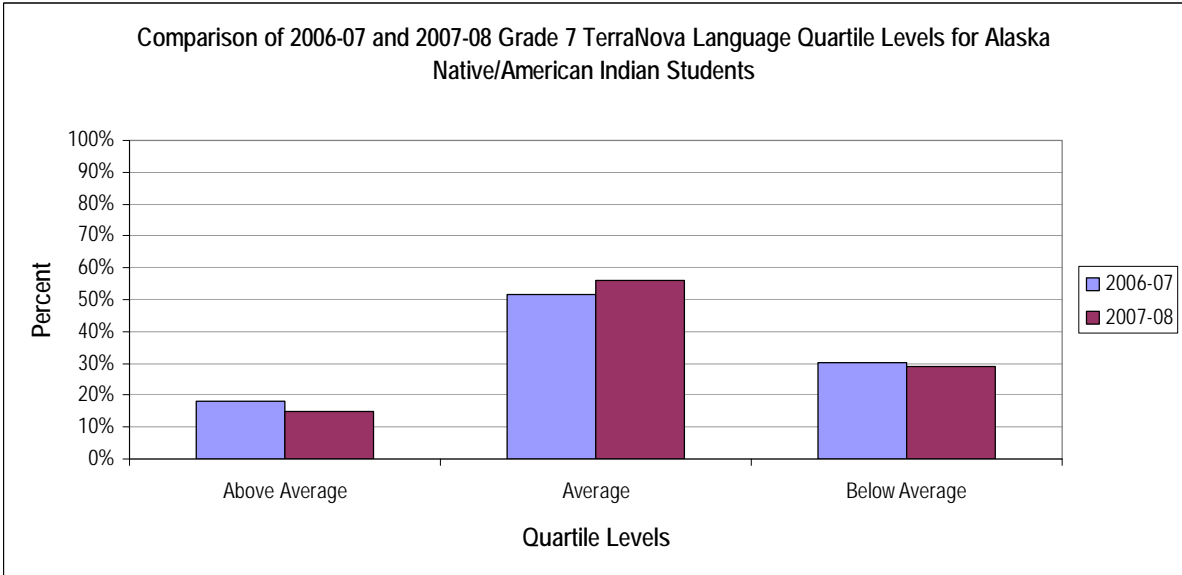
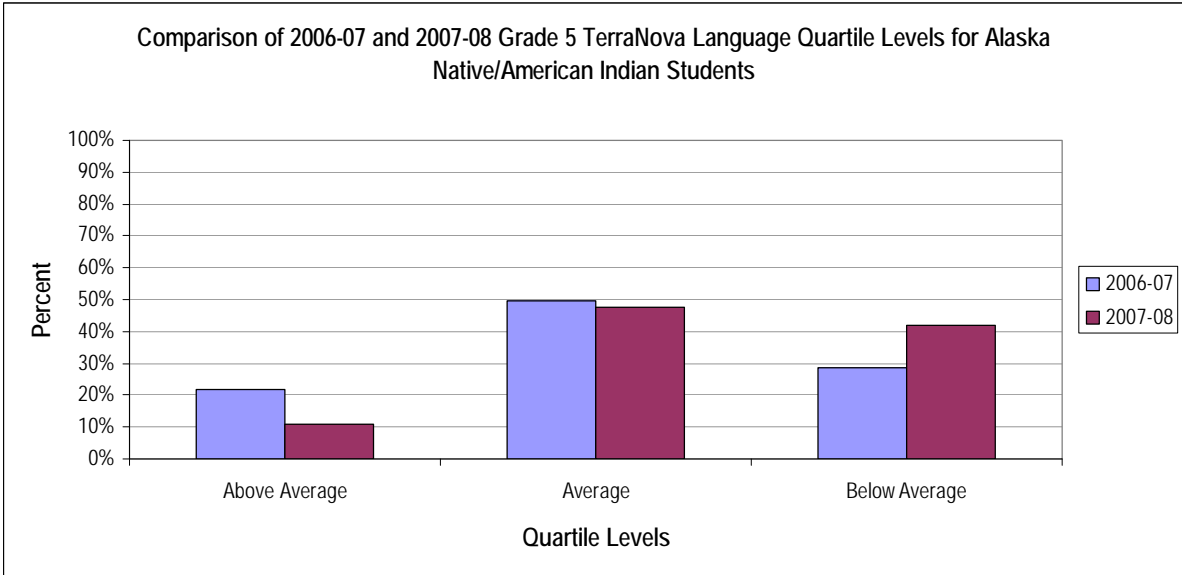
All Students		Language					
		Above Average		Average		Below Average	
		N	%	N	%	N	%
GRADE	5	1,198	34.73%	1,666	48.30%	585	16.96%
	7	1,286	35.42%	1,825	50.26%	520	14.32%

2007-08 Grade 5 TerraNova Language Quartile Levels by Ethnicity



2007-08 Grade 7 TerraNova Language Quartile Levels by Ethnicity





Attachment 9: TerraNova Mathematics Performance by Quartiles

2007-08 TerraNova Mathematics Quartiles for Alaska Native/American Indian, White and All Students

Alaska Native/American Indian		Mathematics							
		4th Quartile		3rd Quartile		2nd Quartile		1st Quartile	
		N	%	N	%	N	%	N	%
GRADE	5	30	10.03%	58	19.40%	85	28.43%	126	42.14%
	7	45	16.92%	63	23.68%	84	31.58%	74	27.82%

White		Mathematics							
		4th Quartile		3rd Quartile		2nd Quartile		1st Quartile	
		N	%	N	%	N	%	N	%
GRADE	5	591	34.42%	514	29.94%	385	22.42%	227	13.22%
	7	769	42.25%	494	27.14%	371	20.38%	186	10.22%

All Students		Mathematics							
		4th Quartile		3rd Quartile		2nd Quartile		1st Quartile	
		N	%	N	%	N	%	N	%
GRADE	5	880	25.45%	913	26.40%	846	24.47%	819	23.68%
	7	1,134	32.27%	942	26.81%	849	24.16%	589	16.76%

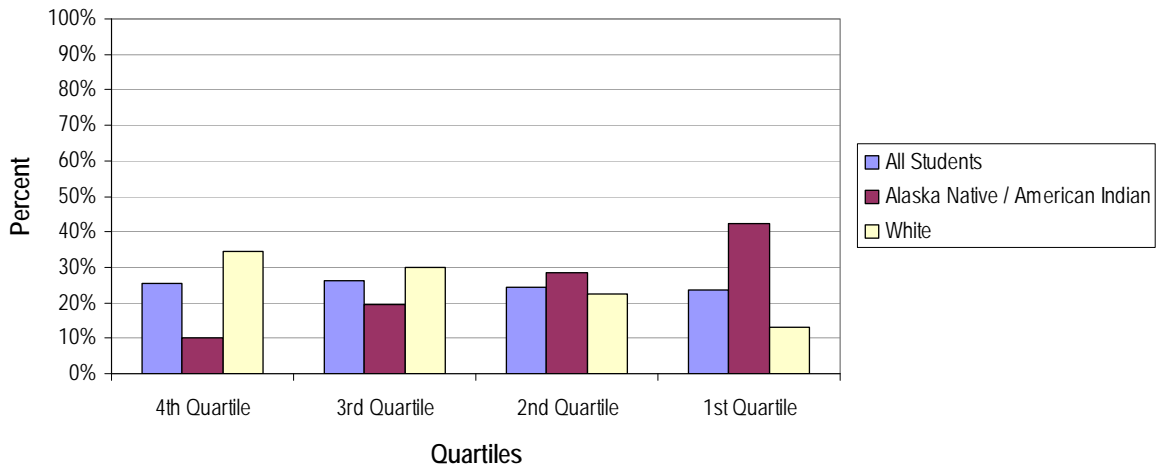
2006-07 TerraNova Mathematics Quartiles for Alaska Native/American Indian, White and All Students

Alaska Native/American Indian		Mathematics							
		4th Quartile		3rd Quartile		2nd Quartile		1st Quartile	
		N	%	N	%	N	%	N	%
GRADE	5	89	18.58%	162	33.82%	99	20.67%	129	26.93%
	7	78	16.60%	114	24.26%	131	27.87%	147	31.28%

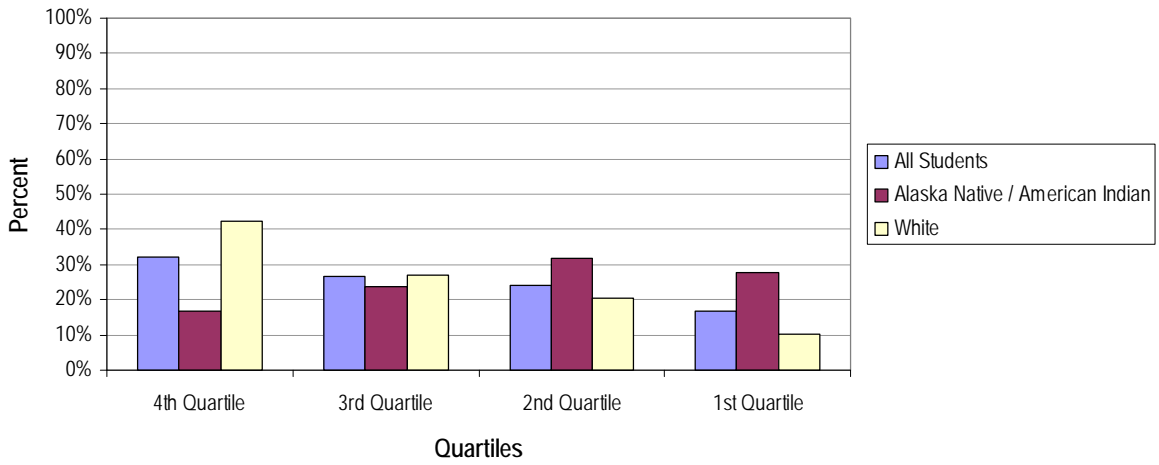
White		Mathematics							
		4th Quartile		3rd Quartile		2nd Quartile		1st Quartile	
		N	%	N	%	N	%	N	%
GRADE	5	710	39.31%	597	33.06%	316	17.50%	183	10.13%
	7	788	39.96%	592	30.02%	385	19.52%	207	10.50%

All Students		Mathematics							
		4th Quartile		3rd Quartile		2nd Quartile		1st Quartile	
		N	%	N	%	N	%	N	%
GRADE	5	1,027	29.74%	1,092	31.62%	733	21.23%	601	17.41%
	7	1,141	31.48%	1,025	28.28%	834	23.01%	624	17.22%

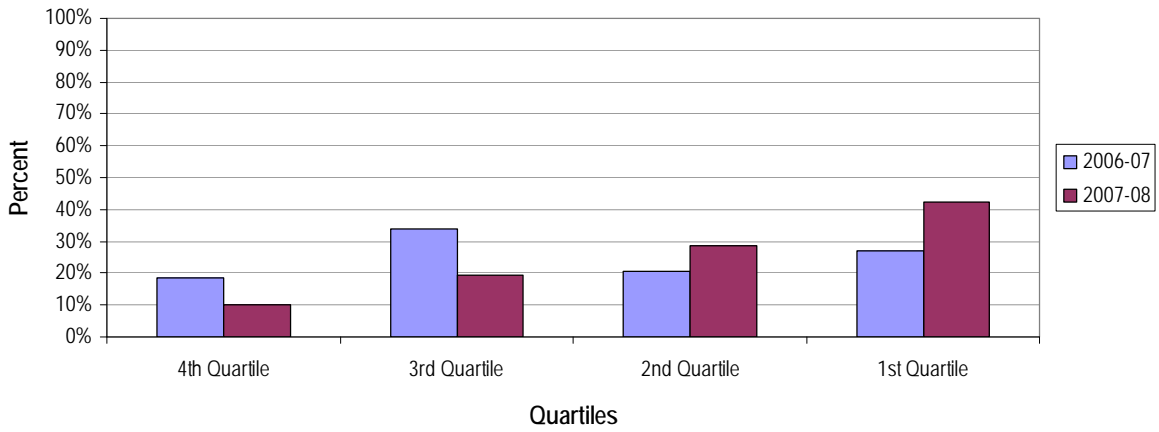
2007-08 Grade 5 TerraNova Math Quartiles by Ethnicity



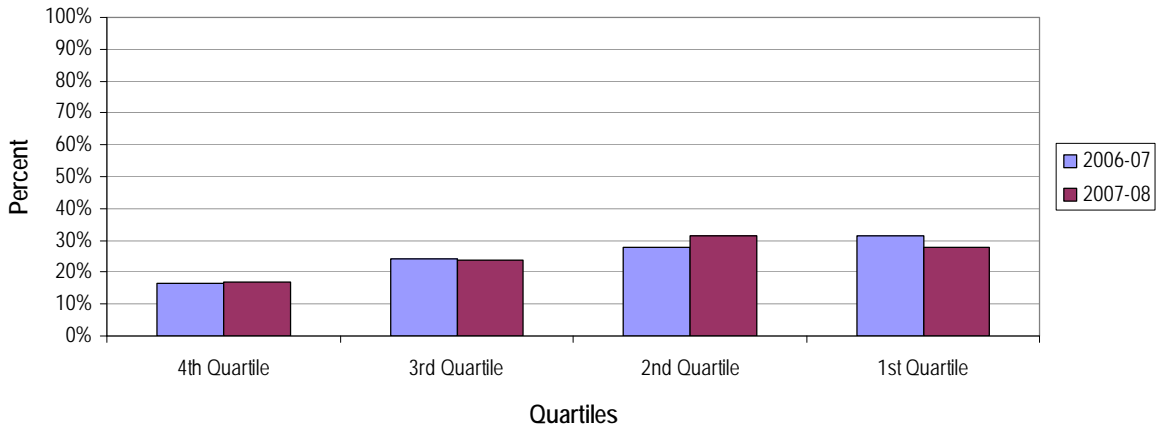
2007-08 Grade 7 TerraNova Math Quartiles by Ethnicity



Comparison of 2006-07 and 2007-08 Grade 5 TerraNova Math Quartiles for Alaska Native/American Indian Students



Comparison of 2006-07 and 2007-08 Grade 7 TerraNova Math Quartiles for Alaska Native/American Indian Students



2007-08 TerraNova Mathematics Quartile Levels for Alaska Native/American Indian, White and All Students

Alaska Native/American Indian		Mathematics					
		Above Average		Average		Below Average	
		N	%	N	%	N	%
GRADE	5	30	10.03%	143	47.83%	126	42.14%
	7	45	16.92%	147	55.26%	74	27.82%

White		Mathematics					
		Above Average		Average		Below Average	
		N	%	N	%	N	%
GRADE	5	591	34.42%	899	52.36%	227	13.22%
	7	769	42.25%	865	47.53%	186	10.22%

All Students		Mathematics					
		Above Average		Average		Below Average	
		N	%	N	%	N	%
GRADE	5	880	25.45%	1,759	50.87%	819	23.68%
	7	1,134	32.27%	1,791	50.97%	589	16.76%

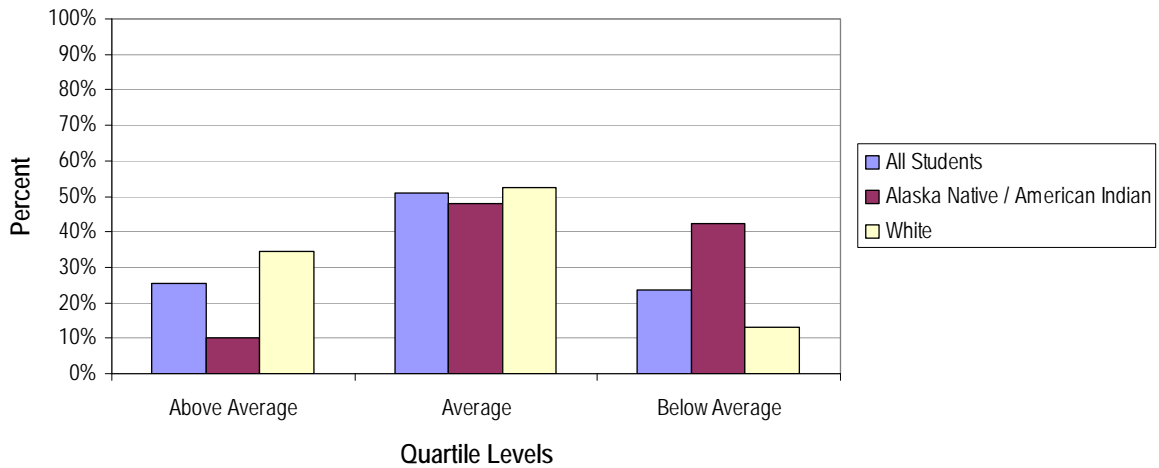
2006-07 TerraNova Mathematics Quartile Levels for Alaska Native/American Indian, White and All Students

Alaska Native/American Indian		Mathematics					
		Above Average		Average		Below Average	
		N	%	N	%	N	%
GRADE	5	89	18.58%	261	54.49%	129	26.93%
	7	78	16.60%	245	52.13%	147	31.28%

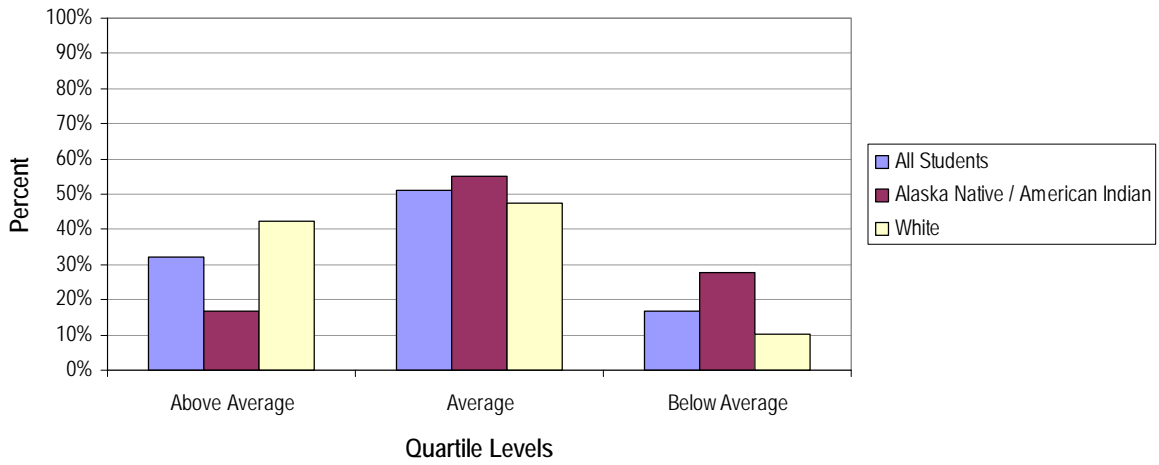
White		Mathematics					
		Above Average		Average		Below Average	
		N	%	N	%	N	%
GRADE	5	710	39.31%	913	50.55%	183	10.13%
	7	788	39.96%	977	49.54%	207	10.50%

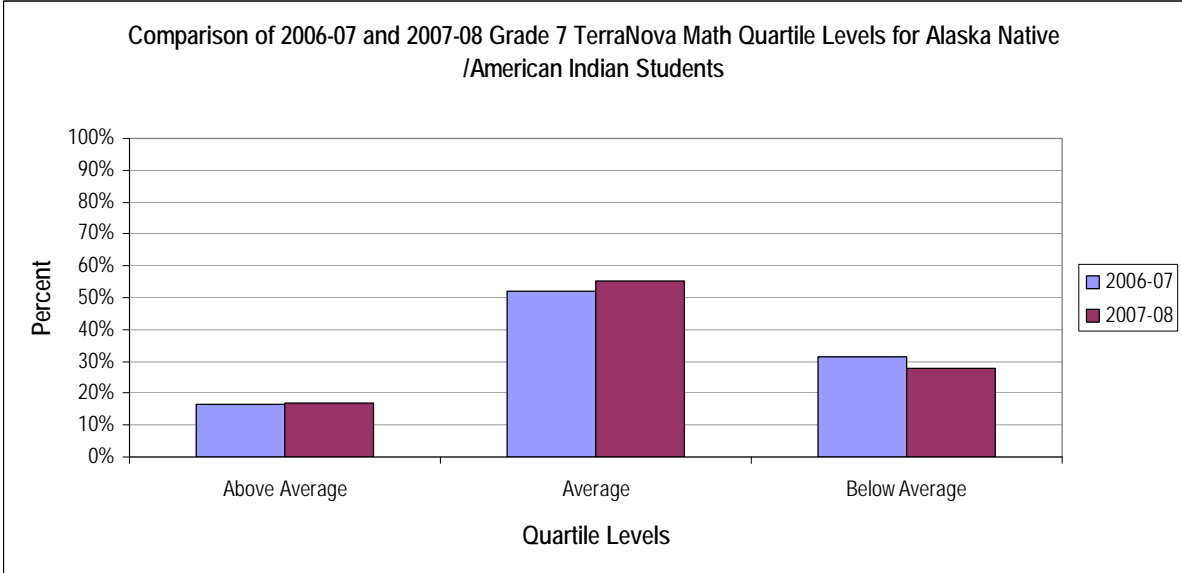
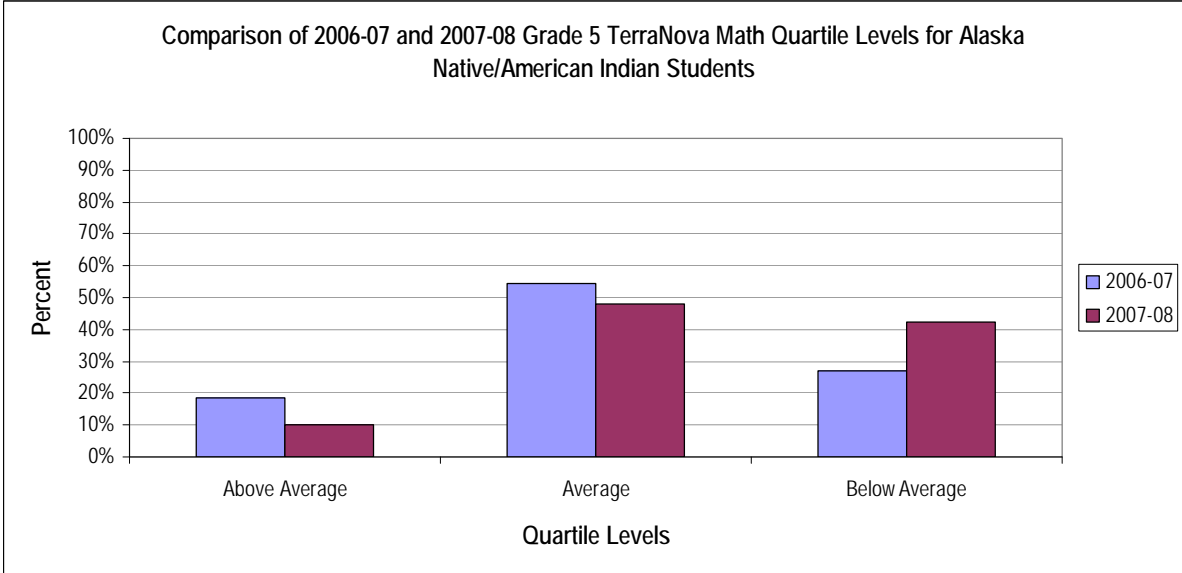
All Students		Mathematics					
		Above Average		Average		Below Average	
		N	%	N	%	N	%
GRADE	5	1,027	29.74%	1,825	52.85%	601	17.41%
	7	1,141	31.48%	1,859	51.30%	624	17.22%

2007-08 Grade 5 TerraNova Math Quartile Levels by Ethnicity



2007-08 Grade 7 TerraNova Math Quartile Levels by Ethnicity





Attachment 10: TerraNova NCE Mean Score

2007-08 TerraNova mean NCE Scores for Alaska Native/American Indian, White and All Students							
---	--	--	--	--	--	--	--

Alaska Native/American Indian		NCE Reading		NCE Language		NCE Mathematics	
		N	Mean NCE	N	Mean NCE	N	Mean NCE
Grade	5	300	39.0	300	41.2	300	40.7
	7	269	48.2	269	45.7	269	46.2

White		NCE Reading		NCE Language		NCE Mathematics	
		N	Mean NCE	N	Mean NCE	N	Mean NCE
Grade	5	1,719	56.9	1,719	57.4	1,719	56.3
	7	1,835	61.2	1,835	60.1	1,835	59.5

All Students		NCE Reading		NCE Language		NCE Mathematics	
		N	Mean NCE	N	Mean NCE	N	Mean NCE
Grade	5	3,443	50.4	3,445	51.5	3,458	50.7
	7	3,468	55.9	3,513	54.9	3,514	54.5

2006-07 TerraNova mean NCE Scores for Alaska Native/American Indian, White and All Students							
---	--	--	--	--	--	--	--

Alaska Native/American Indian		NCE Reading		NCE Language		NCE Mathematics	
		N	Mean NCE	N	Mean NCE	N	Mean NCE
Grade	5	482	47.8	482	47.6	482	48.9
	7	476	47.3	476	46.7	476	46.1

White		NCE Reading		NCE Language		NCE Mathematics	
		N	Mean NCE	N	Mean NCE	N	Mean NCE
Grade	5	1,811	61.2	1,811	61.3	1,811	58.8
	7	1,988	62.1	1,988	62.3	1,988	59.1

All Students		NCE Reading		NCE Language		NCE Mathematics	
		N	Mean NCE	N	Mean NCE	N	Mean NCE
Grade	5	3,462	55.4	3,462	55.7	3,462	54.1
	7	3,652	56.3	3,652	56.8	3,652	54.6

Attachment 11: HSGQE Reading Performance

2007-08 HSGQE Reading Proficiency for Alaska Native/American Indian, White and All Students				
--	--	--	--	--

		Reading			
		Not Proficient		Proficient	
		N	%	N	%
Alaska Native/American Indian					
GRADE	10	72	27.80%	187	72.20%

		Reading			
		Not Proficient		Proficient	
		N	%	N	%
White					
GRADE	10	111	5.78%	1,811	94.22%

		Reading			
		Not Proficient		Proficient	
		N	%	N	%
All Students					
GRADE	10	445	12.69%	3,061	87.31%

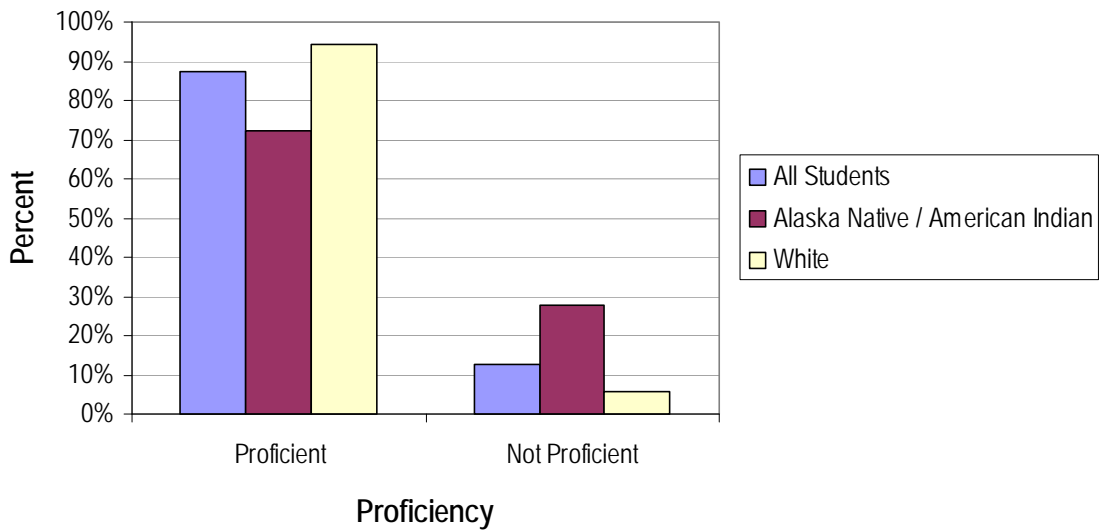
2006-07 HSGQE Reading Proficiency for Alaska Native/American Indian, White and All Students				
--	--	--	--	--

		Reading			
		Not Proficient		Proficient	
		N	%	N	%
Alaska Native/American Indian					
GRADE	10	65	15.70%	349	84.30%

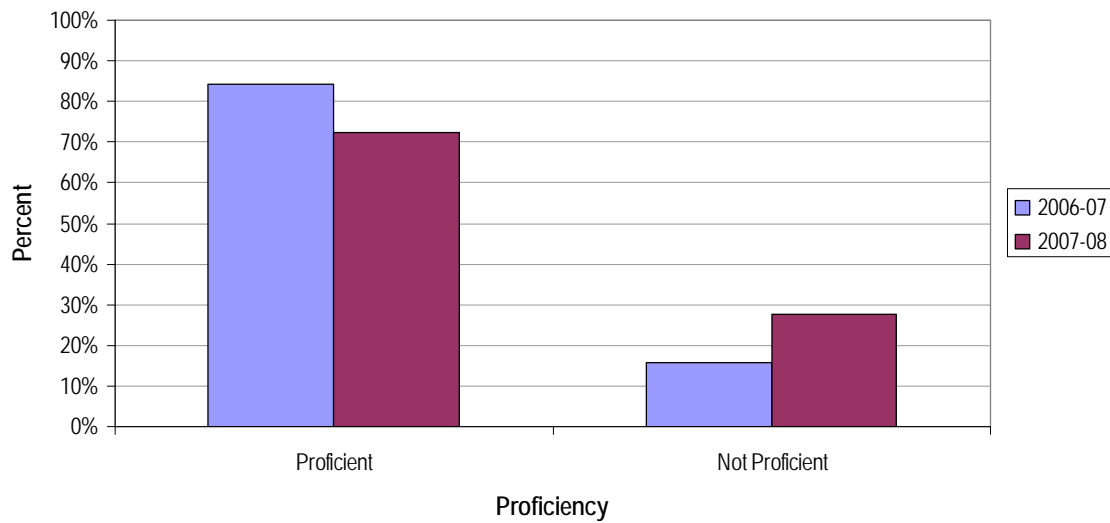
		Reading			
		Not Proficient		Proficient	
		N	%	N	%
White					
GRADE	10	75	3.71%	1,946	96.29%

		Reading			
		Not Proficient		Proficient	
		N	%	N	%
All Students					
GRADE	10	297	8.55%	3,175	91.45%

2007-08 HSGQE Reading Proficiency for Grade 10 by Ethnicity



Comparison of 2006-07 and 2007-08 HSGQE Reading Proficiency for Alaska Native/American Indian Students in Grade 10



Attachment 12: HSGQE Writing Performance

2007-08 HSGQE Writing Proficiency for Alaska Native/American Indian, White and All Students				
--	--	--	--	--

		Writing			
		Not Proficient		Proficient	
		N	%	N	%
Alaska Native/American Indian					
GRADE	10	104	38.38%	167	61.62%

		Writing			
		Not Proficient		Proficient	
		N	%	N	%
White					
GRADE	10	250	12.96%	1,679	87.04%

		Writing			
		Not Proficient		Proficient	
		N	%	N	%
All Students					
GRADE	10	740	21.04%	2,777	78.96%

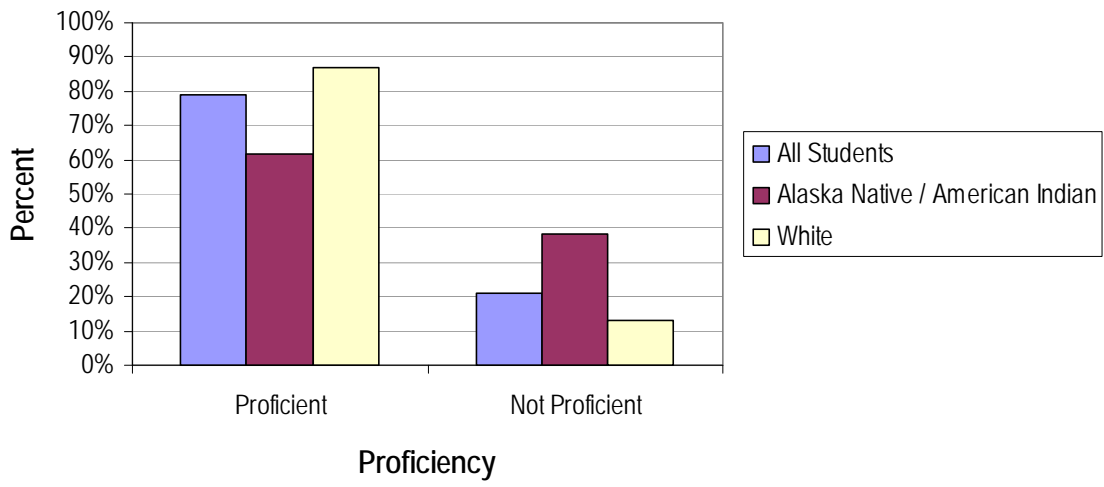
2006-07 HSGQE Writing Proficiency for Alaska Native/American Indian, White and All Students				
--	--	--	--	--

		Writing			
		Not Proficient		Proficient	
		N	%	N	%
Alaska Native/American Indian					
GRADE	10	123	30.30%	283	69.70%

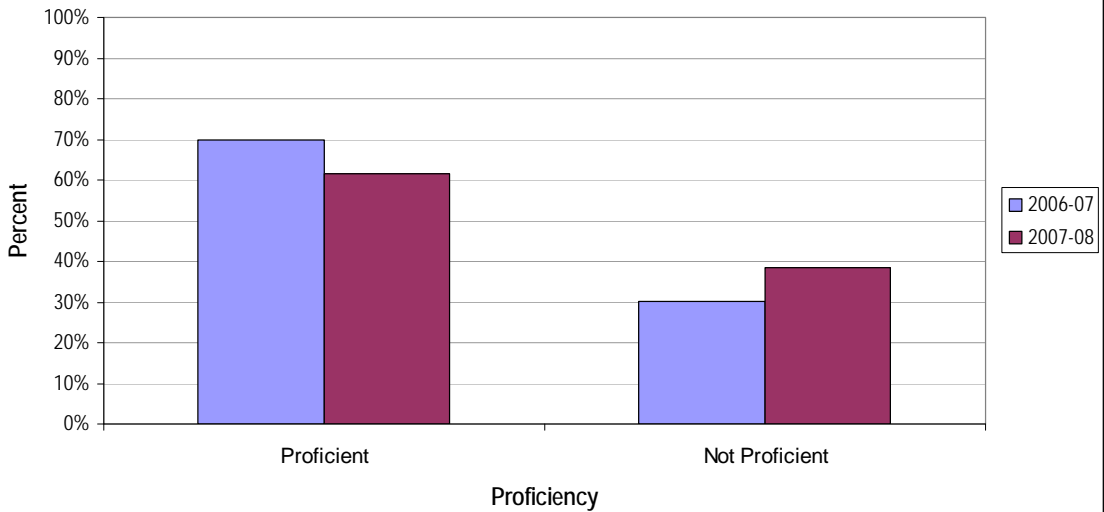
		Writing			
		Not Proficient		Proficient	
		N	%	N	%
White					
GRADE	10	231	11.33%	1,808	88.67%

		Writing			
		Not Proficient		Proficient	
		N	%	N	%
All Students					
GRADE	10	608	17.53%	2860	82.47%

2007-08 HSGQE Writing Proficiency for Grade 10 by Ethnicity



Comparison of 2006-07 and 2007-08 HSGQE Writing Proficiency for Alaska Native/American Indian Students in Grade 10



Attachment 13: HSGQE Mathematics Performance

2007-08 HSGQE Mathematics Proficiency for Alaska Native/American Indian, White and All Students				
--	--	--	--	--

		Mathematics			
		Not Proficient		Proficient	
		N	%	N	%
Alaska Native/American Indian					
GRADE	10	88	33.85%	172	66.15%

		Mathematics			
		Not Proficient		Proficient	
		N	%	N	%
White					
GRADE	10	215	11.14%	1,715	88.86%

		Mathematics			
		Not Proficient		Proficient	
		N	%	N	%
All Students					
GRADE	10	679	19.40%	2,821	80.60%

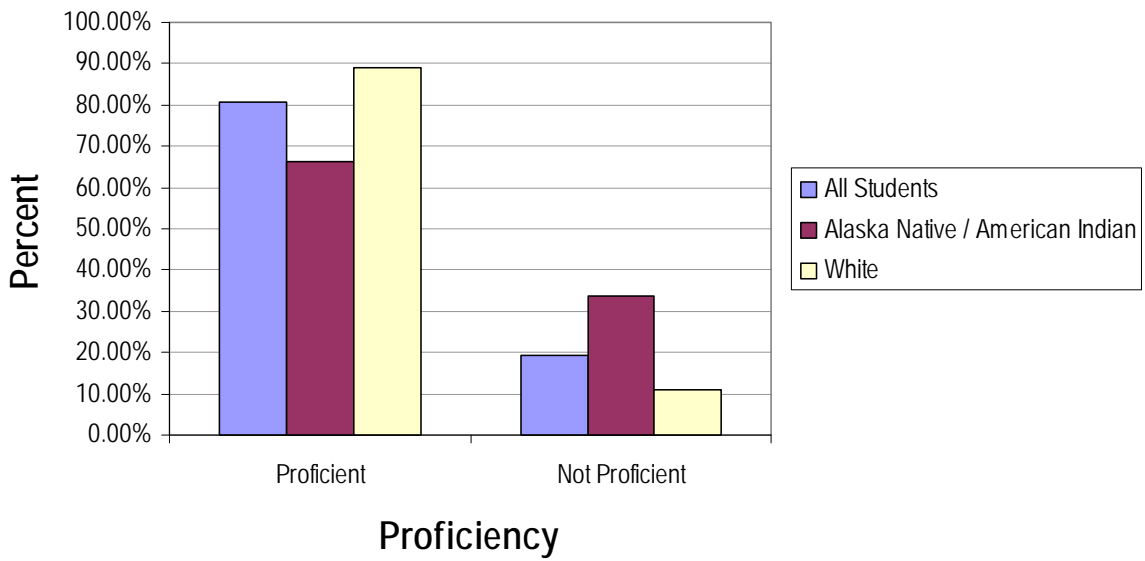
2006-07 HSGQE Mathematics Proficiency for Alaska Native/American Indian, White and All Students				
--	--	--	--	--

		Mathematics			
		Not Proficient		Proficient	
		N	%	N	%
Alaska Native/American Indian					
GRADE	10	112	27.79%	291	72.21%

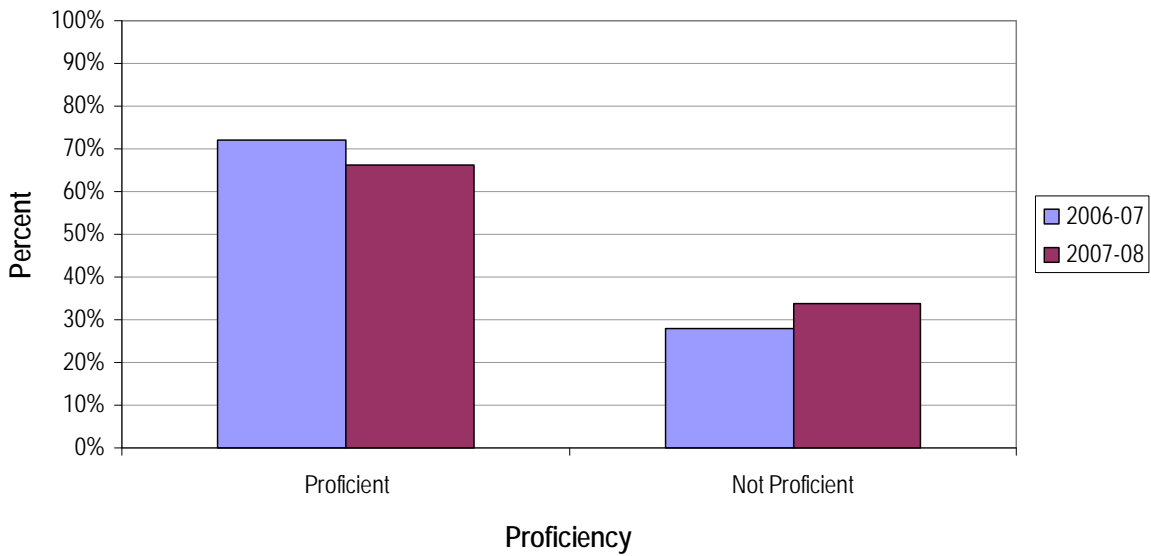
		Mathematics			
		Not Proficient		Proficient	
		N	%	N	%
White					
GRADE	10	201	9.93%	1,823	90.07%

		Mathematics			
		Not Proficient		Proficient	
		N	%	N	%
All Students					
GRADE	10	611	17.68%	2844	82.32%

2007-08 HSGQE Math Proficiency for Grade 10 by Ethnicity



Comparison of 2006-07 and 2007-08 HSGQE Math Proficiency for Alaska Native/American Indian Students in Grade 10



**Attachment 14: Year-to-Year Comparison of HSGQE Cumulative Results
Grades 11 and 12 Alaska Native/American Indian Students**

HSGQE Reading: Alaska Native/American Indian

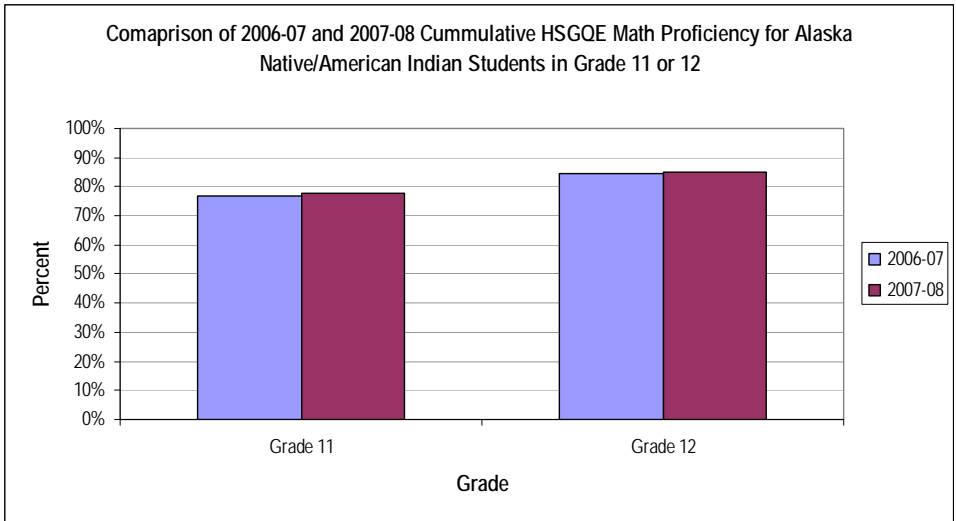
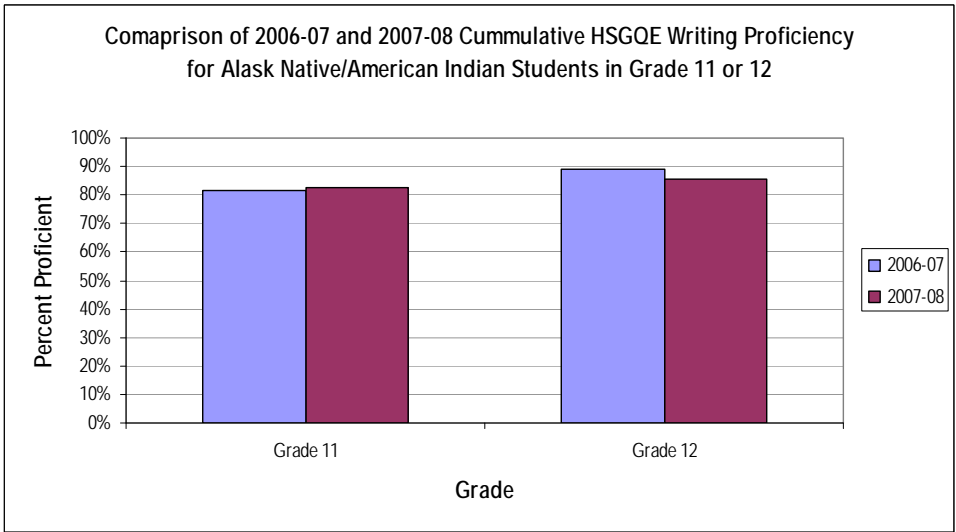
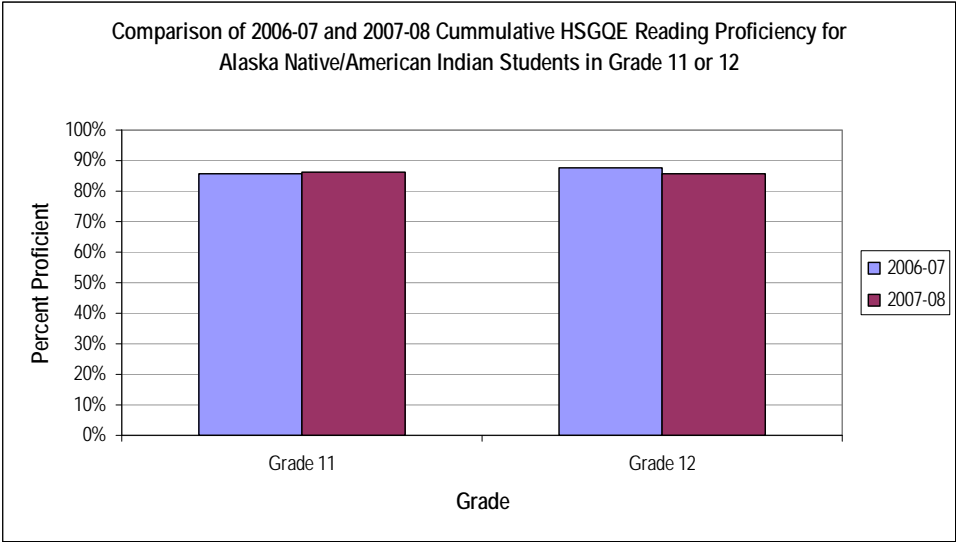
Grade	2006-07 % Proficient	2007-08 % Proficient
Grade 11	85.54%	86.27%
Grade 12	87.60%	85.71%

HSGQE Writing: Alaska Native/American Indian

Grade	2006-07 % Proficient	2007-08 % Proficient
Grade 11	81.62%	82.35%
Grade 12	89.26%	85.71%

HSGQE Mathematics: Alaska Native/American Indian

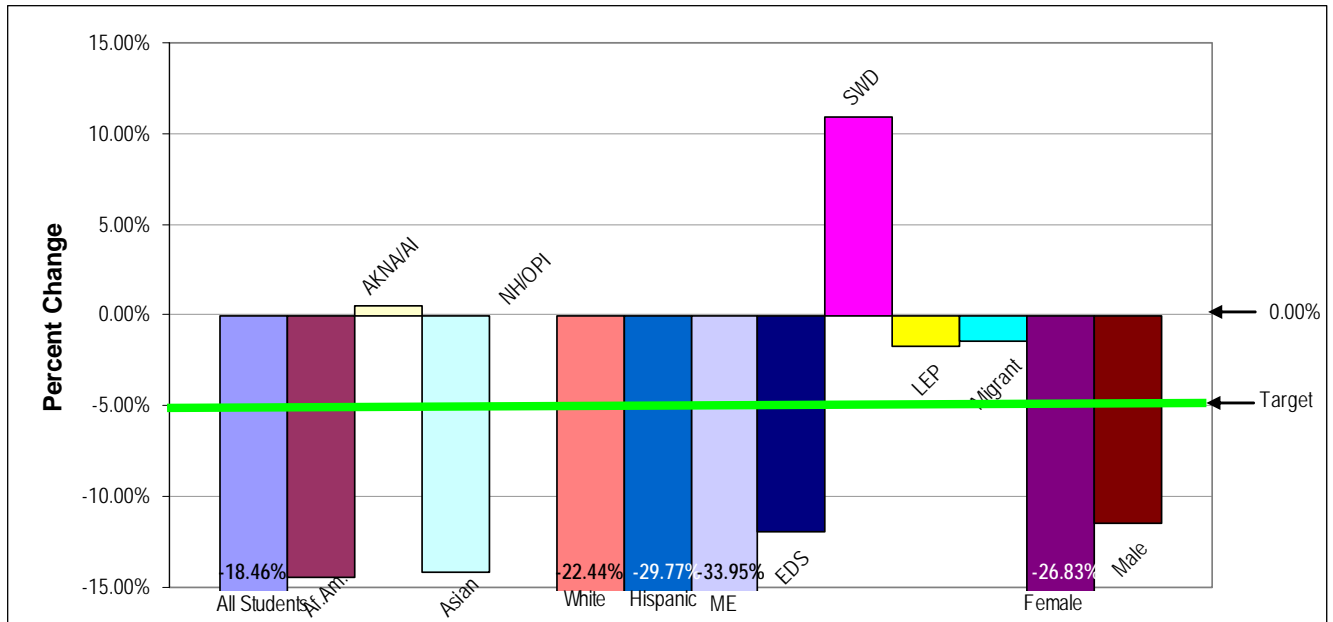
Grade	2006-07 % Proficient	2007-08 % Proficient
Grade 11	76.72%	77.65%
Grade 12	84.57%	85.25%



Attachment 15: Dropout Rate by Ethnicity

Dropout Rate - PRELIMINARY

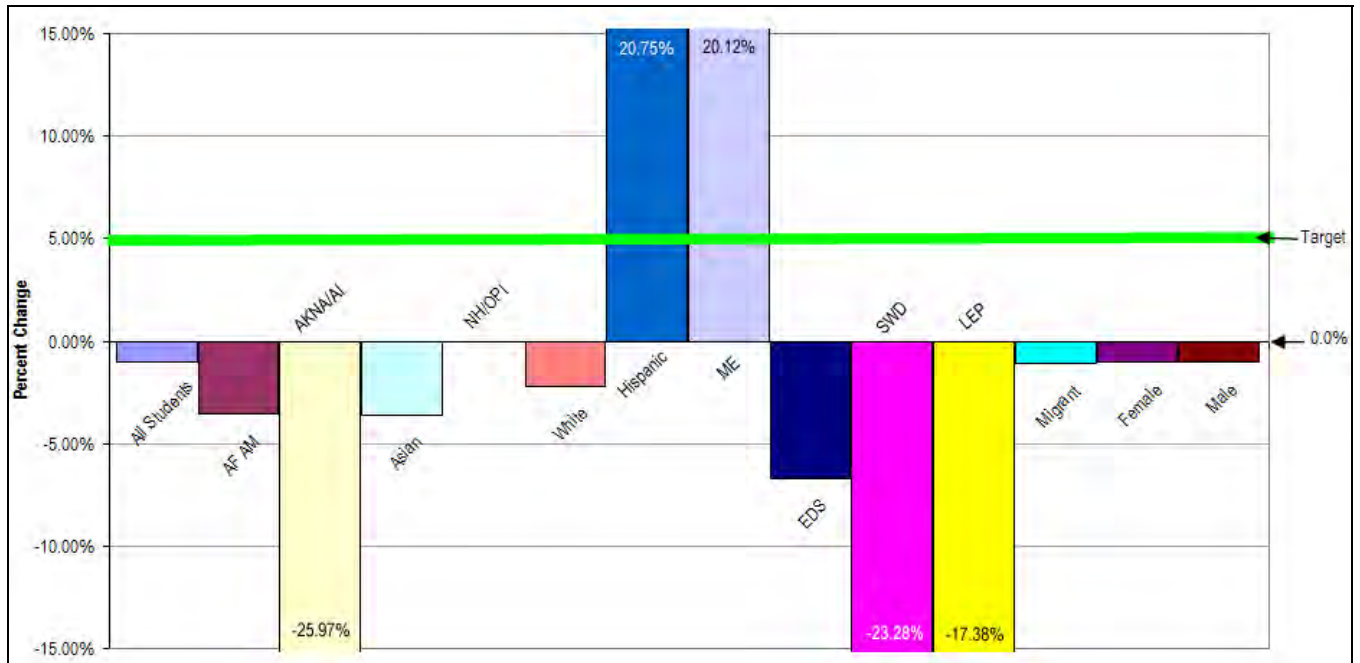
	06-07		07-08		Target*		Result	
	Number Dropouts	Percent Dropout	Number Dropouts	Percent Dropout	Decrease Required	Percentage Change	Percent Change	Target Met?
All Students	1,179	5.10%	947	4.16%	-0.26%	-0.94%	-18.46%	Yes
AF AM	131	7.08%	87	6.05%	-0.35%	-1.03%	-14.49%	Yes
AKNA/AI	276	9.18%	175	9.23%	-0.46%	0.05%	0.49%	No
Asian**	134	4.88%	89	4.19%	-0.24%	-0.69%	-14.18%	Yes
NH/OPI**	N/A	N/A	39	5.49%	N/A	N/A	N/A	N/A
White	461	3.53%	330	2.74%	-0.18%	-0.79%	-22.44%	Yes
Hispanic	90	6.36%	93	4.47%	-0.32%	-1.89%	-29.77%	Yes
ME	87	8.22%	134	5.43%	-0.41%	-2.79%	-33.95%	Yes
EDS	512	6.43%	378	5.67%	-0.32%	-0.76%	-11.89%	Yes
SWD	143	5.22%	160	5.79%	-0.26%	0.57%	10.94%	No
LEP	248	8.24%	184	8.10%	-0.41%	-0.14%	-1.76%	No
Migrant	53	6.74%	51	6.64%	-0.34%	-0.10%	-1.47%	No
Female	530	4.72%	382	3.45%	-0.24%	-1.27%	-26.83%	Yes
Male	649	5.45%	565	4.82%	-0.27%	-0.63%	-11.48%	Yes



Attachment 16: Graduation Rate by Ethnicity

Graduation Rate - PRELIMINARY

Graduation Rate								
	06-07		07-08		Target*		Result	
	Number Graduates	Percent Graduates	Number Graduates	Percent Graduates	Increase Required	Percentage Change	Percent Change	Target Met?
All Students	2,831	64.99%	2,963	64.33%	3.25%	-0.66%	-1.02%	No
AF AM	213	57.26%	179	54.91%	2.86%	-2.35%	-4.11%	No
AKNA/AI	258	42.72%	142	31.63%	2.14%	-11.09%	-25.97%	No
Asian**	318	66.11%	274	63.72%	3.31%	-2.39%	-3.61%	No
NH/OPI**	N/A	N/A	76	60.80%	N/A	N/A	N/A	N/A
White	1,810	73.22%	1,743	71.58%	3.66%	-1.64%	-2.24%	No
Hispanic	150	54.55%	247	65.87%	2.73%	11.32%	20.75%	Yes
ME	82	53.95%	302	64.81%	2.70%	10.86%	20.12%	Yes
EDS	476	46.58%	458	43.45%	2.33%	-3.13%	-6.71%	No
SWD	214	43.15%	194	33.11%	2.16%	-10.04%	-23.28%	No
LEP	259	50.88%	198	42.04%	2.54%	-8.84%	-17.38%	No
Migrant	37	48.68%	52	50.00%	2.43%	1.32%	2.71%	No
Female	1,449	69.53%	1,526	68.80%	3.48%	-0.73%	-1.05%	No
Male	1,382	60.83%	1,437	60.18%	3.04%	-0.65%	-1.08%	No



Attachment 17: Gifted Alaska Native/American Indian

Alaska Native/American Indian Gifted Students
2006-07 and 2007-08

	Gifted Alaska Native/American Indian Students	Total Gifted Students	% of Total Gifted
2007-08	118	3314	3.56%
2006-07	199	3404	5.85%

Attachment 18: Mathematics Advancement

**Year-to-Year Comparison of the Percent of Students
in Grade 8 Who Successfully Completed Algebra I in Current or Previous Years
Anchorage School District**

	Mathematics				
	2006-07 (Prior Year)		2007-08 (Current Year)		Percentage Change
	Number Enrolled	% Successfully Completed	Number Enrolled	% Successfully Completed	
Alaska Native/American Indian	577	9.19%	420	8.81%	-0.38%

**Year-to-Year Comparison of the Percent of Students Who Successfully Completed Algebra I by
Grade 8 and Successfully Completed Geometry or Algebra II in Grade 9 with a C or Higher**

	2006-07 (Prior Year)	2007-08 (Current Year)	Percentage Change
	% of students who successfully completed Algebra I by grade 8 and successfully completed Geometry or Algebra II in grade 9	% of students who successfully completed Algebra I by grade 8 and successfully completed Geometry or Algebra II in grade 9	
Alaska Native/American Indian	64.10%	45.16%	-18.94%

Attachment 19: Achievement Gap

	Language Arts							
	2006-07 (Prior Year)			2007-08 (Current Year)			Result	
	Percent Proficient	Percent Proficient for White Students	Achievement Gap (Percentage Points)	Percent Proficient	Percent Proficient for White Students	Achievement Gap (Percentage Points)	Percentage Points Change in Achievement Gap	Significant Decrease?
Alaska Native/American Indian	68.35%	88.70%	-20.35%	63.54%	88.86%	-25.32%	4.97%	N/A

	Mathematics							
	2006-07 (Prior Year)			2007-08 (Current Year)			Result	
	Percent Proficient	Percent Proficient for White Students	Achievement Gap (Percentage Points)	Percent Proficient	Percent Proficient for White Students	Achievement Gap (Percentage Points)	Percentage Points Change in Achievement Gap	Significant Decrease?
Alaska Native/American Indian	62.69%	83.67%	-20.98%	57.51%	82.04%	-24.53%	3.55%	N/A