

Table 2

Airport Heights School Overview

Statement of Program
Airport Heights Elementary School provides a complete school experience for children in kindergarten through grade six. Each child receives ninety minutes of daily reading instruction as well as regularly scheduled instruction in mathematics, language arts, social studies, science, art, music, physical education, health, and safety.
Dedicated staff help students read with understanding, write legibly, fluently and with correct grammar, solve math problems with speed and accuracy, spell accurately, plan, think, and complete assigned tasks. We also teach students to develop good working habits, respect authority, honor our country, keep themselves healthy, value diversity, recognize and appreciate beauty in art and music, and develop a continuing interest in self-improvement, life-long learning and an optimistic approach to the future.

From the Report Card/MLP

SCHOOL GOALS	
Goal	Level of Achievement
Improving Reading Proficiency	Attained
Improving Math Proficiency	Partially Attained

From the School Report Card

BUDGET*	
2004-2005 Actual Expenditures	\$1,357,006
2005-2006 Revised Budgeted Amount	\$1,275,673
2006-2007 Proposed Budget	\$1,352,370
*Dollars budgeted or expended are general fund only.	

From IFAS

	School	District	Source of Information
Membership	252	50,051	Fall OASIS
Capacity	72%	N/A	Board Report - #189 3/7/06
Attendance Rate	92%	93%	SMS end of year report
Retention Rate	0.4%	1.2%	Report Card File
Transiency Rate	28.15%	22.72%	Report Card File
Economically Disadvantaged	144	16,769	Fall OASIS
Ave. Weekly Volunteer Hours	30	5,032	Report Card File
Students Taking an Alternate Assessment	6	264	SMS
Change in Enrollment	2.9%	0.3%	Report Card File

Airport Heights School Characteristics

Teacher Qualification				
# of teachers	% fully licensed	% with advanced degrees	# Nationally Board Certified	% of classes taught by "highly qualified teachers"
21	100%	31%	0	98%

SCHOOL BUSINESS PARTNERSHIPS
Foster Grandparents

From MLP

ETHNICITY REPORT - OCTOBER 2005						
Caucasian	African American	AK Native/ American Indian	Asian/ Pac. Islander	Hispanic	Multi-Ethnic	Total
84 33.33%	37 14.68%	56 22.22%	29 11.51%	10 3.97%	36 14.29%	252 100.00%

From Fall Oasis

FULL ACADEMIC YEAR (FAY)		
Students Enrolled	Students Enrolled for FAY	Percent FAY
134	119	88.8%

From participation file (3-10 graders)

**Anchorage School District
2005-2006 Adequate Yearly Progress**

Airport Heights Elementary

**AMO For Language Arts: 71.48%
AMO For Math: 57.61%**

Meets AYP

Group	Participation Rate				"FAY"	Language Arts Performance				Math Performance			
	(A) Number Enrolled	(B) Number Tested	Participation Rate (%)	(C) Participation Rate Met		(D) Tested and Enrolled "FAY"	(E) Proficient on LA	(F) Percent Proficient on LA	(G) LA Target	(H) Met AMO for LA	(I) Proficient on Math	(J) Percent Proficient in Math	(K) Math Target
If there are 20 or fewer students enrolled, value is "N/A"													
All Students	134	134	100%	Yes	119	84	70.6%	61.8%	Yes	85	71.4%	47.1%	Yes
African American	20	20	N/A	N/A	N/A	N/A	N/A	N/A	N/A	N/A	N/A	N/A	N/A
AkNa & Amln	29	29	100%	Yes	27	16	59.3%	51.2%	Yes	17	63%	35.5%	Yes
Asian	12	12	N/A	N/A	N/A	N/A	N/A	N/A	N/A	N/A	N/A	N/A	N/A
Caucasian	53	53	100%	Yes	47	38	80.9%	56.1%	Yes	39	83%	40.8%	Yes
Hispanic	<5	<5	N/A	N/A	N/A	N/A	N/A	N/A	N/A	N/A	N/A	N/A	N/A
Multi-Ethnic	17	17	N/A	N/A	N/A	N/A	N/A	N/A	N/A	N/A	N/A	N/A	N/A
Low Income	73	73	100%	Yes	64	38	59.4%	58.3%	Yes	39	60.9%	43.2%	Yes
Disabled	29	29	100%	Yes	N/A	N/A	N/A	N/A	N/A	N/A	N/A	N/A	N/A
LEP	19	19	N/A	N/A	N/A	N/A	N/A	N/A	N/A	N/A	N/A	N/A	N/A

Attendance Rate: 92.5% (Threshold is 85%)

N/A is used to indicate when a group does not need to be evaluated when:

- (1) 20 or fewer students are enrolled in a group for all groups except "All Students".
- (2) 40 or fewer students are enrolled FAY (column D) in the Disabled & LEP groups.

* For the groups where the number enrolled is fewer than or equal to 40, participation is met when no more than 2 miss the test. Groups can also meet this target using the average of the past two or three years.

** Where a group achieves a "Yes" without meeting the listed target, it has done so using either the 99% confidence interval or Safe Harbor.

*** Results cannot be published without releasing personally identifiable information.

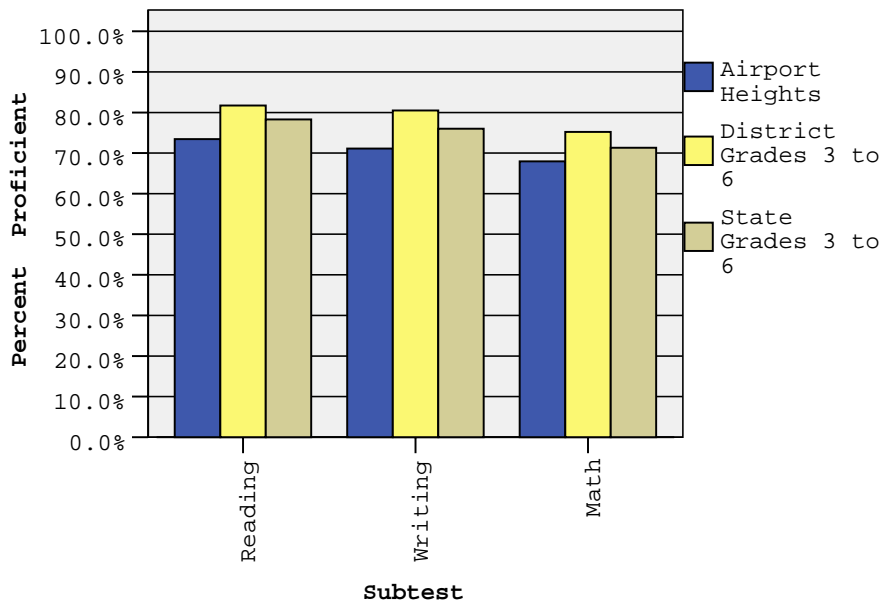
This document was prepared by the ASD Assessment and Evaluation

7/19/2006

Airport Heights Elementary School SBA Proficiency – Spring 2006

	Reading		Writing		Math	
	2005 Proficient	2006 Proficient	2005 Proficient	2006 Proficient	2005 Proficient	2006 Proficient
All Grades	75.7%	73.4%	70.8%	71.1%	66.7%	68.0%
3 rd Grade	61.9%	78.6%	57.1%	67.9%	52.4%	67.9%
4 th Grade	74.2%	65.7%	71.0%	74.3%	80.6%	74.3%
5 th Grade	82.9%	66.7%	77.1%	63.3%	71.4%	60.0%
6 th Grade	86.1%	82.9%	80.6%	77.1%	66.7%	68.6%

SBA Spring 2006 Proficiency Rate Comparison of School, District, and State *



* District and State Grades 3 to 6

Anchorage School District: Profile of Performance 2005-2006

Airport Heights SBA Proficiency by NCLB Groups – Spring 2006

		Reading		Writing		Math	
		Proficient	Not Proficient	Proficient	Not Proficient	Proficient	Not Proficient
Ethnicity	All Students	73.4%	26.6%	71.1%	28.9%	68.0%	32.0%
	African American	50.0%	50.0%	44.4%	55.6%	38.9%	61.1%
	AK Native/ American Indian	64.3%	35.7%	60.7%	39.3%	60.7%	39.3%
	Asian	83.3%	16.7%	83.3%	16.7%	83.3%	16.7%
	Caucasian	88.0%	12.0%	84.0%	16.0%	82.0%	18.0%
	Hispanic	33.3%	66.7%	66.7%	33.3%	33.3%	66.7%
	Multi-Ethnic	70.6%	29.4%	70.6%	29.4%	64.7%	35.3%
LowIncome	Yes	62.7%	37.3%	58.2%	41.8%	55.2%	44.8%
	No	85.2%	14.8%	85.2%	14.8%	82.0%	18.0%
Disabled	Yes	39.1%	60.9%	43.5%	56.5%	47.8%	52.2%
	No	81.0%	19.0%	77.1%	22.9%	72.4%	27.6%
LEP	Yes	77.8%	22.2%	72.2%	27.8%	55.6%	44.4%
	No	72.7%	27.3%	70.9%	29.1%	70.0%	30.0%
Migrant	Yes	64.3%	35.7%	64.3%	35.7%	50.0%	50.0%
	No	74.6%	25.4%	71.9%	28.1%	70.2%	29.8%
Gender	Female	75.4%	24.6%	78.3%	21.7%	65.2%	34.8%
	Male	71.2%	28.8%	62.7%	37.3%	71.2%	28.8%

Anchorage School District: Profile of Performance 2005-2006

Airport Heights SBA Mean Scale Score Comparison: 2004-2005 to 2005-2006

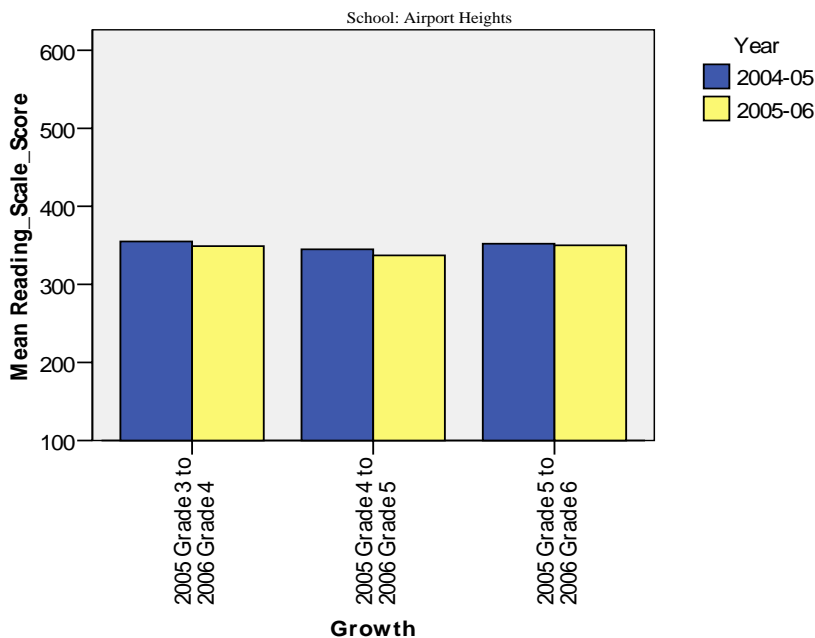
		Reading		Writing		Math	
		2004-2005 Mean Scale Score	2005-2006 Mean Scale Score	2004-2005 Mean Scale Score	2005-2006 Mean Scale Score	2004-2005 Mean Scale Score	2005-2006 Mean Scale Score
Ethnicity	All Students	348.8	351.6	339.2	340.7	339.1	331.9
	African American	324.6	309.6	317.5	299.5	298.3	289.6
	AK Native/ American Indian	339.2	336.1	324.8	328.3	345.2	321.6
	Asian	310.5	354.4	307.8	349.4	285.3	348.1
	Caucasian	376.1	382.9	365.8	373.6	370.4	361.9
	Hispanic	318.8	302.7	335.2	274.0	305.6	269.0
	Multi-Ethnic	345.1	336.0	331.1	313.5	315.8	305.3
Low Income	Yes	330.9	327.8	328.4	319.4	324.1	303.7
	No	362.3	377.8	347.3	364.1	350.4	362.9
Disabled	Yes	288.9	285.7	278.5	293.2	298.4	290.4
	No	362.6	366.0	353.2	351.1	348.4	341.0
LEP	Yes	313.7	356.9	308.6	333.4	296.4	313.7
	No	353.8	350.7	343.5	341.9	345.2	334.9
Migrant	Yes	313.2	337.4	310.2	324.8	325.2	300.2
	No	351.2	353.3	341.1	342.6	340.0	335.8
Gender	Female	354.5	358.7	345.7	354.6	336.5	333.8
	Male	341.8	343.2	331.2	324.5	342.2	329.7

Airport Heights SBA Growth in Average Scale Score by NCLB Groups: Reading

		Average Scale Score of Students Tested in District Both Years			Average Scale Score of Students Tested in District Both Years			Average Scale Score of Students Tested in District Both Years		
		Grade 3 in 2005	Grade 4 in 2006	Difference	Grade 4 in 2005	Grade 5 in 2006	Difference	Grade 5 in 2005	Grade 6 in 2006	Difference
Ethnicity	All Students	354.9	349.1	-5.8	345.3	336.8	-8.5	352.4	349.7	-2.7
	African American	312.0	294.4	-17.7	318.7	327.2	8.5	318.9	315.1	-3.8
	AK Native/ American Indian	372.8	348.9	-23.9	341.7	303.3	-38.4	330.0	334.4	4.4
	Asian	347.2	352.0	4.8	322.1	318.7	-3.4	373.8	409.9	36.1
	Caucasian	373.3	363.8	-9.5	360.4	375.7	15.3	383.2	374.0	-9.2
	Hispanic	.	.	.	307.9	291.1	-16.8	.	.	.
	Multi-Ethnic	345.7	364.3	18.7	376.0	314.4	-61.7	296.7	296.2	-0.5
LowIncome	Yes	305.1	302.7	-2.4	349.8	329.9	-19.9	327.7	327.3	-0.3
	No	396.4	387.7	-8.7	337.2	351.0	13.8	372.1	369.7	-2.4
Disabled	Yes	315.9	304.1	-11.8	284.3	257.8	-26.5	269.4	272.7	3.3
	No	370.0	365.4	-4.6	356.7	357.2	0.5	363.9	360.1	-3.8
LEP	Yes	343.8	369.9	26.1	450.7	376.3	-74.4	332.0	358.4	26.4
	No	357.2	346.0	-11.2	335.1	334.7	-0.4	353.8	348.9	-4.9
Migrant	Yes	310.3	317.8	7.5	335.4	328.7	-6.7	286.2	267.0	-19.2
	No	357.7	351.2	-6.5	347.9	339.1	-8.8	354.3	352.8	-1.5
Gender	Female	376.7	377.3	0.7	345.0	344.4	-0.6	340.7	347.2	6.5
	Male	331.1	318.7	-12.4	343.8	327.9	-15.9	368.7	354.3	-14.4

. No students tested in both years in this category

Measure of Growth in SBA Reading for Students Who Tested in 2005 and Again in 2006



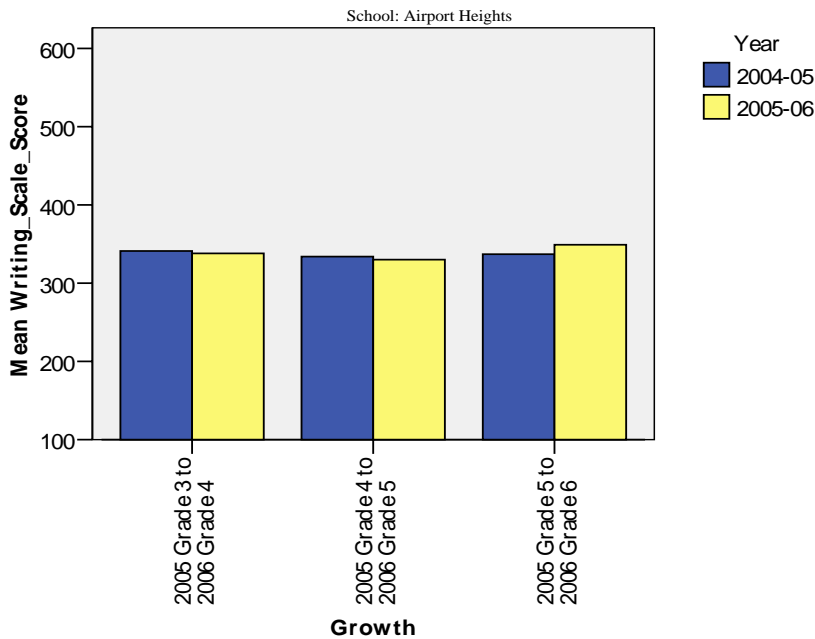
Anchorage School District: Profile of Performance 2005-2006

Airport Heights SBA Growth in Average Scale Score by NCLB Groups: Writing

		Average Scale Score of Students Tested in District Both Years			Average Scale Score of Students Tested in District Both Years			Average Scale Score of Students Tested in District Both Years		
		Grade 3 in 2005	Grade 4 in 2006	Difference	Grade 4 in 2005	Grade 5 in 2006	Difference	Grade 5 in 2005	Grade 6 in 2006	Difference
Ethnicity	All Students	341.3	337.8	-3.5	334.4	329.7	-4.7	337.2	349.0	11.8
	African American	294.7	269.2	-25.5	297.9	292.1	-5.8	309.3	326.8	17.5
	AK Native/ American Indian	349.7	352.3	2.7	312.0	295.4	-16.7	297.7	320.2	22.5
	Asian	346.1	343.7	-2.4	344.8	324.9	-19.9	368.7	389.3	20.7
	Caucasian	357.4	358.7	1.3	357.2	377.0	19.8	371.1	372.7	1.6
	Hispanic	.	.	.	319.3	300.8	-18.5	.	.	.
	Multi-Ethnic	338.0	337.4	-0.6	346.7	291.2	-55.5	277.9	311.1	33.2
LowIncome	Yes	300.8	294.9	-5.9	338.7	323.3	-15.4	315.0	329.4	14.4
	No	372.2	375.0	2.8	328.1	341.7	13.6	354.8	365.9	11.1
Disabled	Yes	313.3	330.8	17.5	270.4	274.7	4.3	252.2	277.0	24.8
	No	350.7	341.2	-9.5	346.9	344.1	-2.8	349.3	358.8	9.5
LEP	Yes	346.7	341.3	-5.3	420.0	350.4	-69.7	307.7	333.2	25.5
	No	340.1	337.7	-2.4	326.8	328.9	2.1	339.7	351.3	11.7
Migrant	Yes	313.4	315.7	2.3	342.2	329.0	-13.2	226.1	215.7	-10.4
	No	342.9	340.1	-2.8	332.3	329.8	-2.5	340.4	352.7	12.3
Gender	Female	367.0	364.4	-2.6	346.7	356.2	9.5	329.9	353.1	23.2
	Male	311.8	310.9	-0.9	318.7	297.3	-21.4	348.0	344.4	-3.6

. No students tested in both years in this category

Measure of Growth in SBA Writing for Students Who Tested in 2005 and Again in 2006



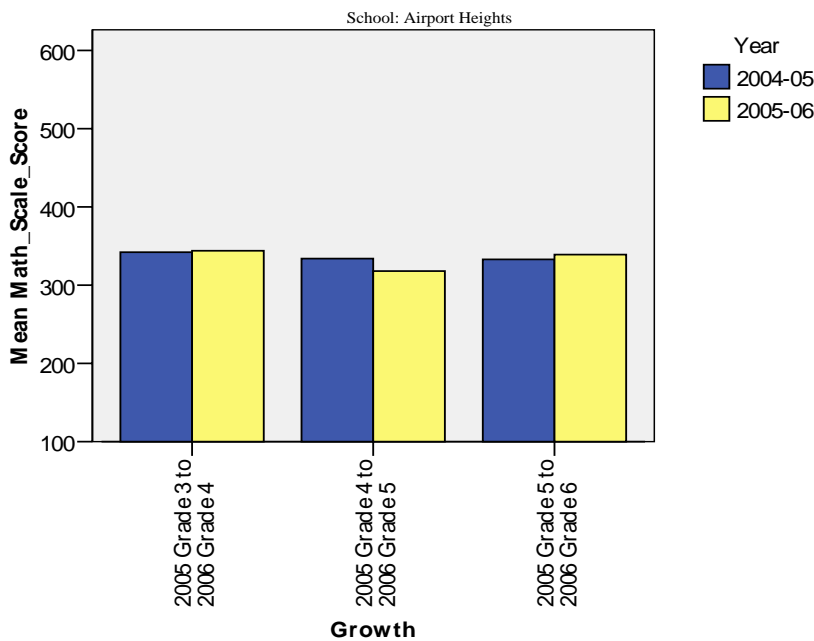
Anchorage School District: Profile of Performance 2005-2006

Airport Heights SBA Growth in Average Scale Score by NCLB Groups: Math

		Average Scale Score of Students Tested in District Both Years			Average Scale Score of Students Tested in District Both Years			Average Scale Score of Students Tested in District Both Years		
		Grade 3 in 2005	Grade 4 in 2006	Difference	Grade 4 in 2005	Grade 5 in 2006	Difference	Grade 5 in 2005	Grade 6 in 2006	Difference
Ethnicity	All Students	342.2	344.0	1.8	334.1	317.7	-16.4	332.8	338.9	6.1
	African American	259.3	280.8	21.5	308.4	275.7	-32.7	286.2	306.0	19.8
	AK Native/ American Indian	401.7	365.2	-36.5	324.9	286.1	-38.8	316.3	317.8	1.5
	Asian	317.7	357.3	39.7	319.0	313.4	-5.6	356.7	393.2	36.5
	Caucasian	363.1	359.7	-3.4	373.8	368.9	-4.9	369.7	368.3	-1.3
	Hispanic	.	.	.	222.2	278.0	55.8	.	.	.
	Multi-Ethnic	315.9	334.1	18.2	299.3	259.8	-39.5	273.4	265.7	-7.7
LowIncome	Yes	296.0	298.4	2.4	323.7	300.2	-23.5	310.9	309.1	-1.8
	No	377.8	382.9	5.1	347.7	351.3	3.7	352.0	365.4	13.4
Disabled	Yes	364.2	340.0	-24.2	271.1	266.7	-4.4	267.8	262.9	-4.9
	No	334.3	345.8	11.5	347.4	330.7	-16.7	342.2	349.0	6.8
LEP	Yes	312.7	336.2	23.5	363.9	262.1	-101.8	298.3	328.8	30.5
	No	346.7	345.3	-1.3	331.0	322.4	-8.6	336.7	340.2	3.5
Migrant	Yes	335.1	283.7	-51.4	329.8	305.9	-23.9	217.7	232.3	14.7
	No	343.4	347.7	4.3	335.2	322.0	-13.2	337.1	341.7	4.6
Gender	Female	355.9	354.1	-1.8	337.3	326.8	-10.5	321.4	330.7	9.3
	Male	326.0	333.4	7.4	330.7	307.2	-23.5	351.9	350.1	-1.8

. No students tested in both years in this category

Measure of Growth in SBA Math for Students Who Tested in 2005 and Again in 2006



Anchorage School District: Profile of Performance 2005-2006

Airport Heights Grades 3-6 SBA Results Compared with District and State: Reading

Reading		% Advanced			% Proficient			% Below Proficient			% Far Below Proficient			Total Students Tested	Percent Tested		
		School	District	State	School	District	State	School	District	State	School	District	State	School	School	District	State
Ethnicity	All Students	24.2%	34.6%	31.2%	49.2%	47.1%	47.1%	18.0%	12.0%	14.1%	8.6%	6.3%	7.7%	134	100.0%	98.1%	98.1%
	African American	5.6%	20.7%	21.4%	44.4%	51.1%	52.9%	44.4%	18.9%	17.1%	5.6%	9.4%	8.6%	20	100.0%	98.2%	98.5%
	AK Native/ American Indian	21.4%	19.3%	12.4%	42.9%	49.7%	45.5%	17.9%	19.1%	25.7%	17.9%	11.9%	16.4%	29	100.0%	97.5%	97.7%
	Asian	33.3%	24.7%	27.4%	50.0%	49.6%	50.7%	8.3%	16.3%	14.8%	8.3%	9.4%	7.0%	12	100.0%	97.1%	97.5%
	Caucasian	34.0%	44.8%	41.6%	54.0%	44.3%	46.3%	8.0%	7.4%	8.2%	4.0%	3.5%	3.8%	53	100.0%	98.5%	98.3%
	Hispanic	*	22.4%	22.4%	*	51.8%	53.0%	*	17.3%	17.3%	*	8.5%	7.3%	*	100.0%	97.0%	97.2%
	Multi-Ethnic	17.6%	27.4%	28.2%	52.9%	50.5%	50.5%	23.5%	14.8%	13.9%	5.9%	7.4%	7.3%	17	100.0%	98.5%	98.7%
Low Income	Yes	14.9%	18.7%	17.4%	47.8%	51.0%	48.4%	26.9%	19.4%	21.3%	10.4%	11.0%	12.9%	73	100.0%	97.6%	97.9%
	No	34.4%	45.1%	41.4%	50.8%	44.5%	46.1%	8.2%	7.2%	8.6%	6.6%	3.3%	3.8%	61	100.0%	98.4%	98.2%
Disabled	Yes	4.3%	8.8%	8.1%	34.8%	36.7%	35.2%	26.1%	28.5%	29.9%	34.8%	26.1%	26.8%	29	100.0%	93.7%	94.0%
	No	28.6%	39.1%	34.9%	52.4%	48.9%	49.1%	16.2%	9.1%	11.4%	2.9%	2.9%	4.5%	105	100.0%	98.9%	98.8%
LEP	Yes	27.8%	15.1%	9.0%	50.0%	52.1%	43.7%	16.7%	20.5%	28.6%	5.6%	12.4%	18.7%	19	100.0%	96.7%	97.3%
	No	23.6%	38.3%	35.5%	49.1%	46.1%	47.8%	18.2%	10.4%	11.2%	9.1%	5.2%	5.6%	115	100.0%	98.3%	98.2%
Migrant	Yes	14.3%	20.0%	13.0%	50.0%	53.7%	44.6%	21.4%	17.1%	25.2%	14.3%	9.2%	17.2%	15	100.0%	99.4%	98.1%
	No	25.4%	35.1%	32.3%	49.1%	46.9%	47.3%	17.5%	11.8%	13.3%	7.9%	6.2%	7.1%	119	100.0%	98.0%	98.1%
Gender	Female	27.5%	39.3%	34.9%	47.8%	46.2%	47.0%	14.5%	10.0%	12.3%	10.1%	4.5%	5.8%	72	100.0%	98.5%	98.4%
	Male	20.3%	30.0%	27.5%	50.8%	47.9%	47.2%	22.0%	13.9%	15.7%	6.8%	8.1%	9.5%	62	100.0%	97.7%	97.7%

*The total number of students tested in this category is fewer than 5. Results cannot be reported according to the state's protocol for reporting results.

Anchorage School District: Profile of Performance 2005-2006

Airport Heights Grades 3-6 SBA Results Compared with District and State: Writing

Writing		% Advanced			% Proficient			% Below Proficient			% Far Below Proficient			Total Students Tested	Percent Tested		
		School	District	State	School	District	State	School	District	State	School	District	State	School	School	District	State
Ethnicity	All Students	17.2%	31.4%	27.4%	53.9%	49.1%	48.6%	26.6%	18.0%	21.9%	2.3%	1.6%	2.1%	134	100.0%	98.1%	98.1%
	African American	5.6%	18.0%	18.8%	38.9%	50.7%	52.0%	55.6%	29.2%	27.3%	0.0%	2.1%	1.9%	20	100.0%	98.2%	98.3%
	AK Native/ American Indian	10.7%	15.5%	10.5%	50.0%	52.5%	45.2%	35.7%	28.7%	39.6%	3.6%	3.2%	4.7%	29	100.0%	97.5%	97.9%
	Asian	16.7%	25.7%	27.6%	66.7%	49.8%	51.0%	16.7%	21.9%	19.3%	0.0%	2.6%	2.0%	12	100.0%	97.0%	97.5%
	Caucasian	32.0%	40.5%	36.3%	52.0%	47.1%	49.0%	16.0%	11.6%	13.7%	0.0%	0.8%	1.0%	53	100.0%	98.5%	98.2%
	Hispanic	*	20.9%	20.2%	*	52.7%	55.2%	*	24.5%	23.1%	*	1.8%	1.5%	*	100.0%	97.0%	97.2%
	Multi-Ethnic	0.0%	25.2%	25.6%	70.6%	51.2%	51.5%	23.5%	21.8%	21.0%	5.9%	1.9%	1.9%	17	100.0%	98.5%	98.6%
Low Income	Yes	9.0%	16.4%	15.3%	49.3%	52.2%	48.7%	40.3%	28.5%	32.4%	1.5%	2.9%	3.6%	73	100.0%	97.6%	98.0%
	No	26.2%	41.3%	36.5%	59.0%	47.0%	48.6%	11.5%	11.1%	13.9%	3.3%	0.7%	0.9%	61	100.0%	98.4%	98.1%
Disabled	Yes	8.7%	7.7%	6.4%	34.8%	40.2%	38.5%	43.5%	45.6%	47.9%	13.0%	6.5%	7.2%	29	100.0%	93.8%	94.2%
	No	19.0%	35.5%	30.9%	58.1%	50.6%	50.3%	22.9%	13.1%	17.6%	0.0%	0.7%	1.2%	105	100.0%	98.9%	98.7%
LEP	Yes	11.1%	14.9%	9.1%	61.1%	53.9%	45.1%	22.2%	28.3%	41.0%	5.6%	2.9%	4.8%	19	100.0%	96.6%	97.5%
	No	18.2%	34.6%	31.0%	52.7%	48.1%	49.3%	27.3%	16.0%	18.1%	1.8%	1.3%	1.5%	115	100.0%	98.3%	98.2%
Migrant	Yes	14.3%	20.2%	12.2%	50.0%	50.6%	43.4%	35.7%	26.5%	39.8%	0.0%	2.7%	4.5%	15	100.0%	99.4%	98.3%
	No	17.5%	31.8%	28.4%	54.4%	49.0%	49.0%	25.4%	17.7%	20.7%	2.6%	1.5%	1.9%	119	100.0%	98.0%	98.1%
Gender	Female	21.7%	37.8%	33.4%	56.5%	47.8%	47.9%	18.8%	13.5%	17.4%	2.9%	1.0%	1.3%	72	100.0%	98.4%	98.4%
	Male	11.9%	25.2%	21.7%	50.8%	50.3%	49.3%	35.6%	22.3%	26.2%	1.7%	2.2%	2.8%	62	100.0%	97.7%	97.7%

*The total number of students tested in this category is fewer than 5. Results cannot be reported according to the state's protocol for reporting results.

Anchorage School District: Profile of Performance 2005-2006

Airport Heights Grades 3-6 SBA Results Compared with District and State: Math

Math		% Advanced			% Proficient			% Below Proficient			% Far Below Proficient			Total Students Tested	Percent Tested		
		School	District	State	School	District	State	School	District	State	School	District	State	School	School	District	State
Ethnicity	All Students	27.3%	38.3%	32.9%	40.6%	37.0%	38.4%	11.7%	13.1%	14.7%	20.3%	11.7%	14.0%	134	100.0%	98.4%	98.2%
	African American	11.1%	19.2%	19.7%	27.8%	39.8%	40.5%	16.7%	18.2%	19.7%	44.4%	22.9%	20.0%	20	100.0%	98.2%	98.5%
	AK Native/ American Indian	28.6%	24.5%	16.3%	32.1%	40.1%	37.1%	14.3%	17.2%	21.4%	25.0%	18.1%	25.2%	29	100.0%	97.4%	97.7%
	Asian	33.3%	33.8%	35.2%	50.0%	37.3%	39.0%	8.3%	13.7%	13.5%	8.3%	15.2%	12.4%	12	100.0%	98.6%	98.8%
	Caucasian	40.0%	47.7%	41.6%	42.0%	35.1%	38.5%	8.0%	10.3%	11.2%	10.0%	6.9%	8.6%	53	100.0%	98.5%	98.3%
	Hispanic	*	27.2%	26.4%	*	39.1%	40.9%	*	19.3%	18.3%	*	14.5%	14.4%	*	100.0%	99.0%	98.7%
	Multi-Ethnic	5.9%	31.5%	32.1%	58.8%	39.6%	39.6%	11.8%	13.9%	13.6%	23.5%	15.0%	14.7%	17	100.0%	98.7%	98.8%
Low Income	Yes	11.9%	23.2%	20.5%	43.3%	39.3%	38.6%	14.9%	18.1%	19.3%	29.9%	19.4%	21.6%	73	100.0%	98.1%	98.1%
	No	44.3%	48.3%	42.1%	37.7%	35.4%	38.3%	8.2%	9.7%	11.2%	9.8%	6.6%	8.4%	61	100.0%	98.6%	98.3%
Disabled	Yes	13.0%	12.7%	11.0%	34.8%	29.6%	28.7%	4.3%	22.4%	22.6%	47.8%	35.3%	37.7%	29	100.0%	93.7%	94.1%
	No	30.5%	42.7%	36.5%	41.9%	38.2%	40.0%	13.3%	11.4%	13.4%	14.3%	7.6%	10.1%	105	100.0%	99.3%	98.9%
LEP	Yes	22.2%	23.6%	14.7%	33.3%	38.5%	35.1%	22.2%	18.1%	22.4%	22.2%	19.8%	27.8%	19	100.0%	98.8%	98.3%
	No	28.2%	41.2%	36.5%	41.8%	36.7%	39.1%	10.0%	12.1%	13.1%	20.0%	10.1%	11.3%	115	100.0%	98.3%	98.2%
Migrant	Yes	7.1%	25.7%	18.7%	42.9%	38.4%	35.1%	21.4%	17.6%	20.1%	28.6%	18.4%	26.1%	15	100.0%	99.4%	98.1%
	No	29.8%	38.7%	33.8%	40.4%	36.9%	38.7%	10.5%	12.9%	14.3%	19.3%	11.4%	13.2%	119	100.0%	98.4%	98.2%
Gender	Female	29.0%	38.1%	33.0%	36.2%	37.8%	39.2%	14.5%	13.3%	14.8%	20.3%	10.9%	13.1%	72	100.0%	98.7%	98.5%
	Male	25.4%	38.5%	32.8%	45.8%	36.2%	37.7%	8.5%	12.9%	14.6%	20.3%	12.5%	14.9%	62	100.0%	98.1%	97.9%

*The total number of students tested in this category is fewer than 5. Results cannot be reported according to the state's protocol for reporting results.

Airport Heights TerraNova 5th grade
Percent in each quartile

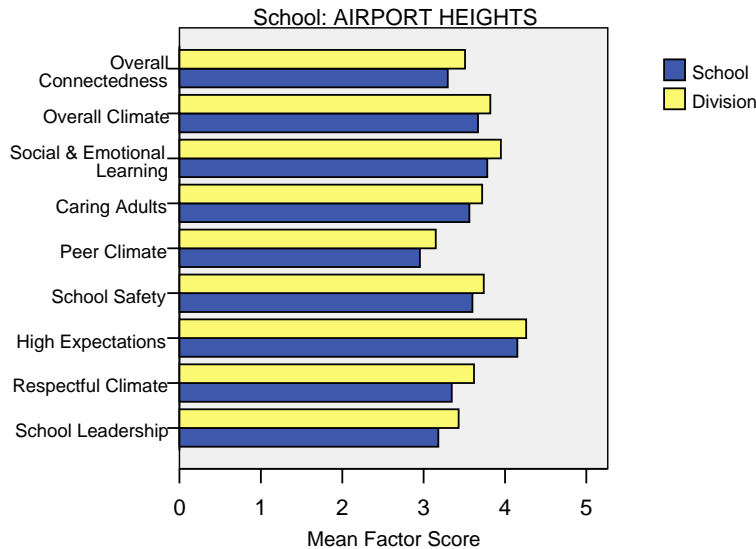
Reading	Above Average		Average				Below Average	
	4th Quartile (76-99 percentile)		3rd Quartile (51-75 percentile)		2nd Quartile (26-50 percentile)		1st Quartile (1-25 percentile)	
	School	District	School	District	School	District	School	District
2005-2006	10.0%	30.4%	23.3%	26.8%	30.0%	24.5%	36.7%	18.3%
2004-2005	21.6%	29.2%	27.0%	27.6%	32.4%	24.5%	18.9%	18.7%
2003-2004	27.3%	30.6%	30.3%	26.9%	33.3%	24.2%	9.1%	18.3%
2002-2003	9.4%	29.1%	31.3%	26.6%	21.9%	23.8%	37.5%	20.5%
2001-2002	40.0%	30.3%	17.5%	26.0%	32.5%	24.6%	10.0%	19.0%

Language	Above Average		Average				Below Average	
	4th Quartile (76-99 percentile)		3rd Quartile (51-75 percentile)		2nd Quartile (26-50 percentile)		1st Quartile (1-25 percentile)	
	School	District	School	District	School	District	School	District
2005-2006	16.7%	34.0%	20.0%	26.5%	33.3%	22.0%	30.0%	17.5%
2004-2005	24.3%	32.1%	35.1%	28.3%	16.2%	21.2%	24.3%	18.4%
2003-2004	30.3%	34.1%	39.4%	26.5%	15.2%	21.7%	15.2%	17.7%
2002-2003	18.8%	32.8%	28.1%	26.5%	21.9%	20.9%	31.3%	19.8%
2001-2002	35.0%	32.3%	27.5%	26.4%	22.5%	22.9%	15.0%	18.4%

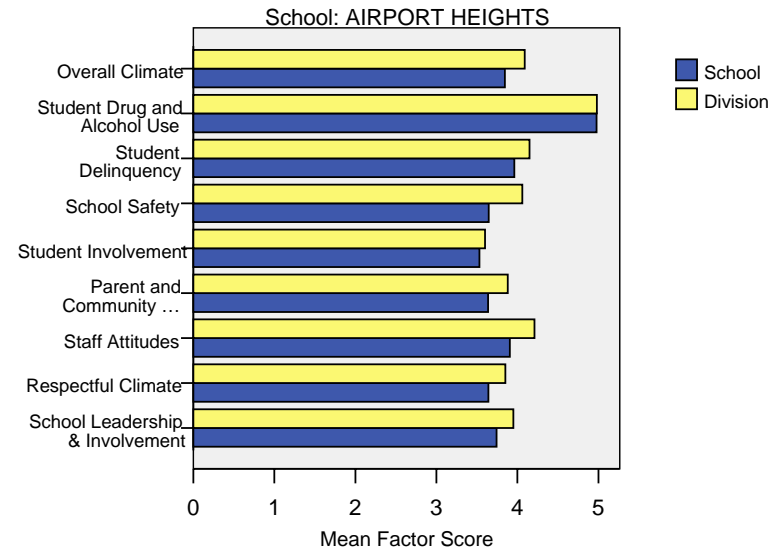
Math	Above Average		Average				Below Average	
	4th Quartile (76-99 percentile)		3rd Quartile (51-75 percentile)		2nd Quartile (26-50 percentile)		1st Quartile (1-25 percentile)	
	School	District	School	District	School	District	School	District
2005-2006	13.3%	28.4%	36.7%	31.9%	23.3%	22.3%	26.7%	17.5%
2004-2005	27.0%	26.9%	29.7%	31.1%	21.6%	22.9%	21.6%	19.1%
2003-2004	24.2%	28.3%	33.3%	29.3%	18.2%	22.6%	24.2%	19.8%
2002-2003	12.5%	24.7%	31.3%	30.6%	15.6%	22.6%	40.6%	22.1%
2001-2002	25.0%	24.1%	35.0%	30.1%	25.0%	24.8%	15.0%	20.9%

Airport Heights School Climate Survey Results

2006 Student Climate Survey Results



2006 Staff Climate Survey Results



The factors measured in the Student and Staff Climate Survey were:

- **Overall Connectedness – Student Survey:** The Overall Connectedness score for the student survey was computed as an average of three scales: Respectful Climate, Peer Climate, and Caring Adults.
- **Overall Climate – Student Survey:** The Overall Climate score for the student survey was computed as the average of three scales: School Leadership, High Expectations, and School Safety.
- **Overall Climate – Staff Survey:** The Overall Climate score for the staff survey was computed as the average of 6 scales: School Leadership, Respectful Climate, Staff Attitudes, Parent and Community Involvement, Student Involvement, School Safety, Student Delinquency, and Drug and Alcohol Use scores.
- **School Leadership:** Reflects feelings about the decision making of school leaders, fairness of school rules, and student participation in school governance. 1 indicates a low level of school leadership and 5 indicates a high level of school leadership.
- **Respectful Climate:** Fairness of rules and how well students and staff treat one another. 1 indicates a lack of respect and 5 indicates a highly respectful climate.
- **High Expectations:** Expectations of students from peers and adults. 1 indicates a lack of high expectations and 5 indicates very high expectations.

- **School Safety:** Presence of school bullies, gangs and general crime and violence in the community. 1 indicates a low level of safety and 5 indicates a high level of safety.
- **Peer Climate:** Reflects feelings about how respectful and helpful students are to one another. 1 indicates a negative peer climate and 5 indicates a very positive climate.
- **Caring Adults:** Reflects the caring adult relationships students have in the school. 1 indicates a lack of caring relationships and 5 indicates a high number of caring adults.
- **Social & Emotional Learning:** Reflects students' ability to think about the consequences of their actions and to empathize with others. 1 indicates poor social and emotional learning and 5 indicates higher levels of social and emotional learning.
- **Staff Attitudes:** Reflects feelings about competence and attitude towards jobs. 1 indicates more negative attitudes and 5 indicates highly positive attitudes.
- **Parent and Community Involvement:** Accessibility of the school for parents and how connected adults in the community are to the school. 1 indicates a low level of parent and community involvement and 5 indicates a high level of parent and community involvement.
- **Student Involvement:** Reflects feelings about how involved students are in the schools' decision making process. 1 indicates a low level of student involvement and 5 indicates a high level of student involvement.
- **Student Delinquency:** Reflects staff members' reports of witnessed student fights, stealing, and bullying. 1 indicates a high level of delinquency and 5 indicates a low level (5 is most desired).
- **Student Drug and Alcohol Use:** Reflects staff members' reports of observing students under the influence of drugs or alcohol. 1 indicates a high level of drug and alcohol use and 5 indicates a low level (5 is most desired).