

Table 3

Alpenglow School Overview

**Statement of Program**

Alpenglow Elementary School is a traditional neighborhood school that provides an exceptional K-6 program to its students and community. The instructional staff includes K-6 teachers, special education teachers, a music teacher, physical education teacher, art teacher, and a librarian. Alpenglow is dedicated to offering its students a comprehensive education with an emphasis on high academic achievement, technology, healthy lifestyles, creative problem solving, and mastery of basic skills. There is an ongoing emphasis on the whole child: affective development, self-discipline, sound decision-making and good interpersonal skills. Alpenglow enjoys strong parental involvement and is dedicated to continuing and expanding its partnership with the community.

From the Report Card/MLP

SCHOOL GOALS	
Goal	Level of Achievement
Improve student reading proficiency and raise overall grade level proficiency by 2-3% in each grade level.	Partially attained
Improve student math proficiency and raise overall grade level proficiency by 2-3% in each grade level.	Partially attained
Revise and reinforce schoolwide discipline plan.	Partially attained

From the School Report Card

BUDGET*	
2004-2005 Actual Expenditures	\$2,136,395
2005-2006 Revised Budgeted Amount	\$2,112,218
2006-2007 Proposed Budget	\$2,366,299
*Dollars budgeted or expended are general fund only.	

From IFAS

	School	District	Source of Information
Membership	460	50,051	Fall OASIS
Capacity	82%	N/A	Board Report - #189 3/7/06
Attendance Rate	95%	93%	SMS end of year report
Retention Rate	0.9%	1.2%	Report Card File
Transiency Rate	14.17%	22.72%	Report Card File
Economically Disadvantaged	36	16,769	Fall OASIS
Ave. Weekly Volunteer Hours	55	5,032	Report Card File
Students Taking an Alternate Assessment	0	264	SMS
Change in Enrollment	2.5%	0.3%	Report Card File

Anchorage School District: Profile of Performance ..... 2005-2006  
 Alpenglow School Characteristics

Teacher Qualification				
# of teachers	% fully licensed	% with advanced degrees	# Nationally Board Certified	% of classes taught by "highly qualified teachers"
30	100%	26%	0	96%

SCHOOL BUSINESS PARTNERSHIPS
The Book Shelf Wal-Mart

From MLP

ETHNICITY REPORT - OCTOBER 2005						
Caucasian	African American	AK Native/ American Indian	Asian/ Pac. Islander	Hispanic	Multi-Ethnic	Total
354	14	13	13	23	43	460
76.96%	3.04%	2.83%	2.83%	5.00%	9.35%	100.00%

From Fall Oasis

FULL ACADEMIC YEAR (FAY)		
Students Enrolled	Students Enrolled for FAY	Percent FAY
255	234	91.8%

From participation file (3-10 graders)

**Anchorage School District  
2005-2006 Adequate Yearly Progress**

**Alpenglow Elementary**

**AMO For Language Arts: 71.48%  
AMO For Math: 57.61%**

**Meets AYP**

Group	Participation Rate				"FAY"	Language Arts Performance				Math Performance			
	(A) Number Enrolled	(B) Number Tested	Participation Rate (%)	(C) Participation Rate Met		(D) Tested and Enrolled "FAY"	(E) Proficient on LA	(F) Percent Proficient on LA	(G) LA Target	(H) Met AMO for LA	(I) Proficient on Math	(J) Percent Proficient in Math	(K) Math Target
If there are 20 or fewer students enrolled, value is "N/A"													
All Students	255	255	100%	Yes	234	219	93.6%	64.6%	Yes	202	86.3%	50.1%	Yes
African American	11	11	N/A	N/A	N/A	N/A	N/A	N/A	N/A	N/A	N/A	N/A	N/A
AkNa & Amln	9	9	N/A	N/A	N/A	N/A	N/A	N/A	N/A	N/A	N/A	N/A	N/A
Asian	10	10	N/A	N/A	N/A	N/A	N/A	N/A	N/A	N/A	N/A	N/A	N/A
Caucasian	194	194	100%	Yes	178	169	94.9%	63.6%	Yes	158	88.8%	49%	Yes
Hispanic	14	14	N/A	N/A	N/A	N/A	N/A	N/A	N/A	N/A	N/A	N/A	N/A
Multi-Ethnic	17	17	N/A	N/A	N/A	N/A	N/A	N/A	N/A	N/A	N/A	N/A	N/A
Low Income	21	21	100%	Yes	N/A	N/A	N/A	N/A	N/A	N/A	N/A	N/A	N/A
Disabled	49	49	100%	Yes	48	37	77.1%	56.3%	Yes	26	54.2%	41%	Yes
LEP	7	7	N/A	N/A	N/A	N/A	N/A	N/A	N/A	N/A	N/A	N/A	N/A

Attendance Rate: 95.0% (Threshold is 85%)

N/A is used to indicate when a group does not need to be evaluated when:

- (1) 20 or fewer students are enrolled in a group for all groups except "All Students".
- (2) 40 or fewer students are enrolled FAY (column D) in the Disabled & LEP groups.

\* For the groups where the number enrolled is fewer than or equal to 40, participation is met when no more than 2 miss the test. Groups can also meet this target using the average of the past two or three years.

\*\* Where a group achieves a "Yes" without meeting the listed target, it has done so using either the 99% confidence interval or Safe Harbor.

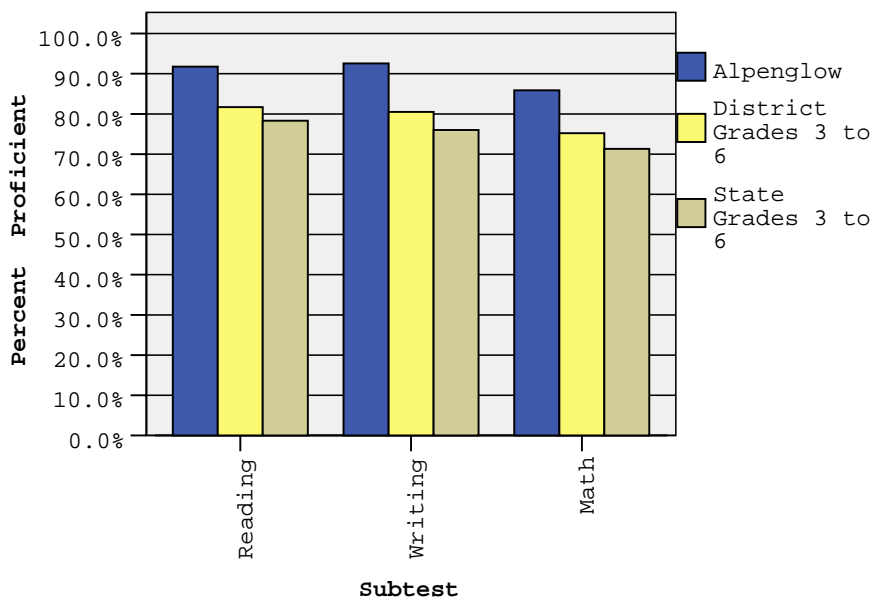
\*\*\* Results cannot be published without releasing personally identifiable information.

This document was prepared by the ASD Assessment and Evaluation 7/19/2006

Alpenglow Elementary School SBA Proficiency – Spring 2006

	Reading		Writing		Math	
	2005 Proficient	2006 Proficient	2005 Proficient	2006 Proficient	2005 Proficient	2006 Proficient
All Grades	90.8%	91.8%	88.9%	92.5%	82.8%	85.9%
3 <sup>rd</sup> Grade	91.8%	95.4%	90.2%	98.5%	91.8%	89.2%
4 <sup>th</sup> Grade	93.2%	95.0%	89.8%	95.0%	76.3%	86.7%
5 <sup>th</sup> Grade	89.1%	94.4%	87.5%	97.2%	77.8%	91.7%
6 <sup>th</sup> Grade	89.7%	81.0%	88.5%	77.6%	84.8%	74.1%

SBA Spring 2006 Proficiency Rate Comparison of School, District, and State \*



\* District and State Grades 3 to 6

Anchorage School District: Profile of Performance ..... 2005-2006

Alpenglow SBA Proficiency by NCLB Groups – Spring 2006

		Reading		Writing		Math	
		Proficient	Not Proficient	Proficient	Not Proficient	Proficient	Not Proficient
Ethnicity	All Students	91.8%	8.2%	92.5%	7.5%	85.9%	14.1%
	African American	72.7%	27.3%	63.6%	36.4%	63.6%	36.4%
	AK Native/ American Indian	88.9%	11.1%	100.0%	0.0%	77.8%	22.2%
	Asian	80.0%	20.0%	90.0%	10.0%	80.0%	20.0%
	Caucasian	93.8%	6.2%	93.8%	6.2%	87.6%	12.4%
	Hispanic	78.6%	21.4%	85.7%	14.3%	78.6%	21.4%
	Multi-Ethnic	100.0%	0.0%	100.0%	0.0%	94.1%	5.9%
LowIncome	Yes	81.0%	19.0%	90.5%	9.5%	71.4%	28.6%
	No	92.7%	7.3%	92.7%	7.3%	87.2%	12.8%
Disabled	Yes	63.3%	36.7%	73.5%	26.5%	53.1%	46.9%
	No	98.5%	1.5%	97.1%	2.9%	93.7%	6.3%
LEP	Yes	85.7%	14.3%	100.0%	0.0%	85.7%	14.3%
	No	91.9%	8.1%	92.3%	7.7%	85.9%	14.1%
Migrant	Yes	100.0%	0.0%	100.0%	0.0%	100.0%	0.0%
	No	91.7%	8.3%	92.5%	7.5%	85.8%	14.2%
Gender	Female	93.5%	6.5%	96.4%	3.6%	85.6%	14.4%
	Male	89.7%	10.3%	87.9%	12.1%	86.2%	13.8%

**Anchorage School District: Profile of Performance ..... 2005-2006**

Alpenglow SBA Mean Scale Score Comparison: 2004-2005 to 2005-2006

		Reading		Writing		Math	
		2004-2005 Mean Scale Score	2005-2006 Mean Scale Score	2004-2005 Mean Scale Score	2005-2006 Mean Scale Score	2004-2005 Mean Scale Score	2005-2006 Mean Scale Score
Ethnicity	All Students	391.0	398.1	382.2	390.1	370.3	374.3
	African American	370.6	358.4	376.8	346.2	341.1	352.1
	AK Native/ American Indian	379.0	378.0	358.1	381.9	350.0	342.2
	Asian	394.4	404.6	381.5	420.8	393.9	390.2
	Caucasian	393.9	401.3	384.6	391.4	371.8	376.6
	Hispanic	394.3	381.7	380.4	372.9	386.6	361.1
	Multi-Ethnic	362.5	408.5	367.7	404.6	355.5	380.3
Low Income	Yes	394.8	376.6	401.3	379.4	352.0	355.7
	No	390.8	400.1	381.3	391.1	371.1	376.0
Disabled	Yes	341.8	338.6	344.1	338.7	318.7	318.9
	No	405.9	412.3	393.8	402.3	385.6	387.5
LEP	Yes	437.0	379.7	413.0	355.4	374.0	356.1
	No	390.8	398.6	382.1	391.1	370.2	374.8
Migrant	Yes	456.7	410.0	462.0	409.5	314.7	361.5
	No	390.2	398.0	381.3	390.0	370.9	374.4
Gender	Female	399.7	410.4	398.3	405.2	373.1	375.2
	Male	382.4	383.5	366.4	372.1	367.5	373.2

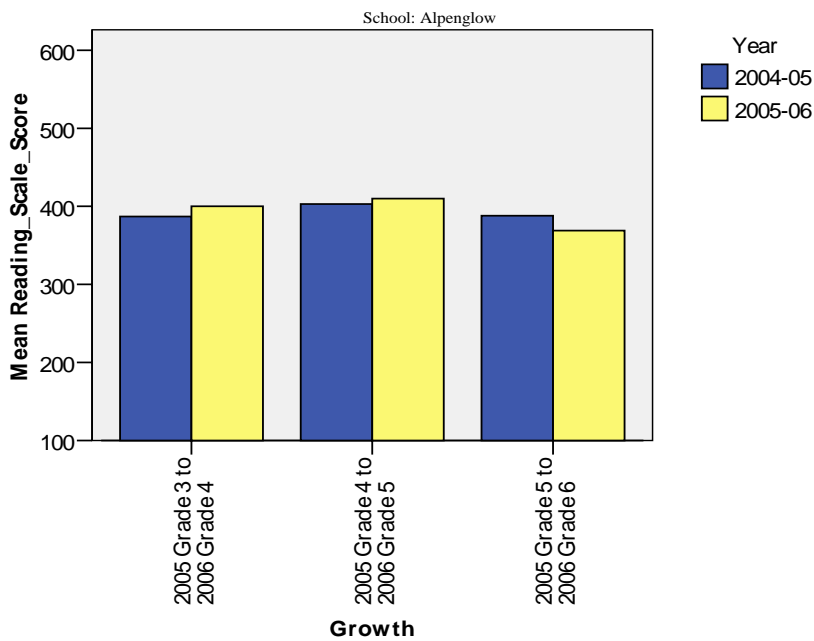
**Anchorage School District: Profile of Performance ..... 2005-2006**

**Alpenglow SBA Growth in Average Scale Score by NCLB Groups: Reading**

		Average Scale Score of Students Tested in District Both Years			Average Scale Score of Students Tested in District Both Years			Average Scale Score of Students Tested in District Both Years		
		Grade 3 in 2005	Grade 4 in 2006	Difference	Grade 4 in 2005	Grade 5 in 2006	Difference	Grade 5 in 2005	Grade 6 in 2006	Difference
Ethnicity	All Students	387.0	400.4	13.4	402.7	410.2	7.5	387.9	369.1	-18.8
	African American	.	337.9	.	433.7	437.3	3.7	303.0	281.4	-21.7
	AK Native/American Indian	370.2	364.0	-6.2	372.1	400.7	28.6	332.8	318.9	-13.9
	Asian	409.3	378.8	-30.5	.	.	.	409.2	424.0	14.8
	Caucasian	391.7	408.2	16.5	402.9	408.1	5.2	397.3	372.8	-24.5
	Hispanic	329.7	369.3	39.7	494.0	478.4	-15.7	351.7	353.2	1.5
	Multi-Ethnic	362.1	402.7	40.6	366.8	402.9	36.1	.	450.3	.
LowIncome	Yes	387.4	388.7	1.3	403.2	413.0	9.8	407.1	339.7	-67.4
	No	386.9	401.1	14.2	403.3	409.8	6.5	386.4	370.7	-15.7
Disabled	Yes	353.0	357.4	4.4	339.7	349.2	9.5	293.9	278.1	-15.8
	No	395.8	409.9	14.1	415.7	422.3	6.7	412.0	392.4	-19.7
LEP	Yes	.	384.0	.	415.1	425.7	10.6	361.8	412.9	51.1
	No	387.3	400.8	13.5	402.4	409.7	7.3	388.2	368.0	-20.2
Migrant	Yes	.	.	.	445.9	428.1	-17.8	474.3	391.8	-82.5
	No	386.7	400.3	13.7	402.0	410.4	8.4	385.7	368.2	-17.5
Gender	Female	388.1	412.7	24.6	399.8	416.9	17.1	419.7	395.3	-24.4
	Male	385.4	384.7	-0.7	407.2	401.0	-6.2	352.1	341.7	-10.4

. No students tested in both years in this category

**Measure of Growth in SBA Reading for Students Who Tested in 2005 and Again in 2006**



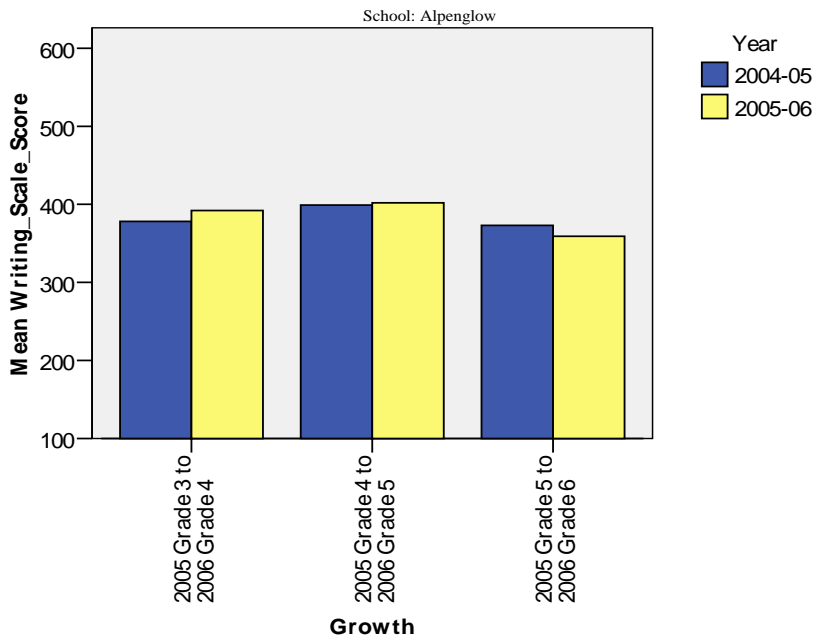
**Anchorage School District: Profile of Performance ..... 2005-2006**

**Alpenglow SBA Growth in Average Scale Score by NCLB Groups: Writing**

		Average Scale Score of Students Tested in District Both Years			Average Scale Score of Students Tested in District Both Years			Average Scale Score of Students Tested in District Both Years		
		Grade 3 in 2005	Grade 4 in 2006	Difference	Grade 4 in 2005	Grade 5 in 2006	Difference	Grade 5 in 2005	Grade 6 in 2006	Difference
Ethnicity	All Students	377.7	392.2	14.5	398.9	402.1	3.2	373.3	358.8	-14.5
	African American	.	342.3	.	486.0	432.4	-53.7	302.7	233.2	-69.5
	AK Native/ American Indian	333.1	371.7	38.6	335.8	402.9	67.1	327.2	353.3	26.2
	Asian	391.4	395.7	4.3	.	.	.	435.1	429.7	-5.4
	Caucasian	380.9	398.1	17.2	394.3	398.8	4.5	376.4	362.7	-13.7
	Hispanic	338.0	364.4	26.4	486.7	433.2	-53.5	382.9	319.1	-63.8
	Multi-Ethnic	382.8	372.9	-9.9	397.7	419.3	21.7	.	534.4	.
LowIncome	Yes	356.2	390.0	33.8	400.1	400.7	0.6	394.8	352.9	-41.9
	No	379.3	391.8	12.5	399.4	401.7	2.3	372.2	359.0	-13.2
Disabled	Yes	354.7	346.2	-8.5	339.9	367.1	27.2	301.3	261.8	-39.5
	No	384.7	402.3	17.7	411.0	409.4	-1.6	391.7	384.2	-7.5
LEP	Yes	.	359.7	.	412.8	395.9	-16.9	373.7	336.3	-37.4
	No	378.4	392.7	14.3	398.2	403.0	4.8	373.1	358.7	-14.4
Migrant	Yes	.	.	.	480.3	412.8	-67.5	432.4	405.7	-26.7
	No	378.0	392.4	14.4	396.7	402.2	5.5	371.9	358.1	-13.8
Gender	Female	383.8	408.9	25.1	411.7	410.3	-1.3	404.0	393.4	-10.7
	Male	369.2	372.0	2.8	380.1	391.7	11.6	338.8	324.9	-13.9

. No students tested in both years in this category

**Measure of Growth in SBA Writing for Students Who Tested in 2005 and Again in 2006**



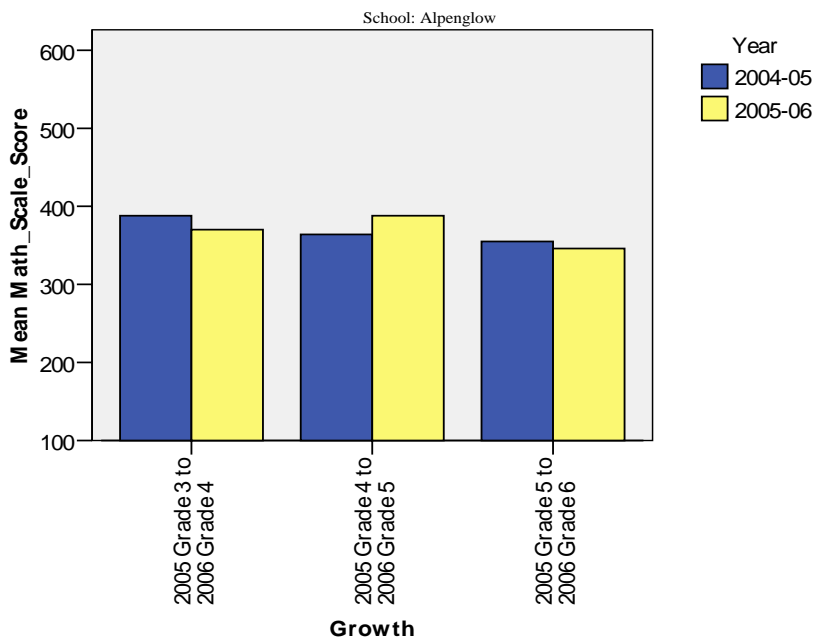
**Anchorage School District: Profile of Performance ..... 2005-2006**

**Alpenglow SBA Growth in Average Scale Score by NCLB Groups: Math**

		Average Scale Score of Students Tested in District Both Years			Average Scale Score of Students Tested in District Both Years			Average Scale Score of Students Tested in District Both Years		
		Grade 3 in 2005	Grade 4 in 2006	Difference	Grade 4 in 2005	Grade 5 in 2006	Difference	Grade 5 in 2005	Grade 6 in 2006	Difference
Ethnicity	All Students	388.0	370.4	-17.7	363.7	388.2	24.5	354.9	346.1	-8.8
	African American	.	328.9	.	463.7	482.3	18.7	264.0	260.4	-3.6
	AK Native/ American Indian	376.2	345.0	-31.2	278.1	358.7	80.6	284.8	287.4	2.6
	Asian	384.3	348.8	-35.5	.	.	.	419.2	433.0	13.8
	Caucasian	391.7	377.2	-14.5	362.9	385.1	22.2	363.3	350.8	-12.5
	Hispanic	354.7	349.3	-5.3	446.0	476.4	30.4	317.7	280.2	-37.5
	Multi-Ethnic	383.1	364.7	-18.4	337.8	362.9	25.1	.	411.3	.
LowIncome	Yes	366.4	354.7	-11.7	351.2	391.0	39.8	367.1	300.7	-66.4
	No	388.9	371.1	-17.8	365.3	386.8	21.5	355.4	348.7	-6.7
Disabled	Yes	353.0	329.4	-23.7	300.7	333.2	32.5	266.9	246.1	-20.8
	No	397.8	378.9	-18.9	377.7	398.3	20.7	379.0	372.4	-6.6
LEP	Yes	.	348.0	.	355.1	426.7	71.6	326.8	343.9	17.1
	No	388.3	370.8	-17.5	364.4	386.7	22.3	356.2	346.0	-10.2
Migrant	Yes	.	.	.	349.9	389.1	39.2	347.3	333.8	-13.5
	No	387.7	370.3	-17.4	364.0	388.4	24.4	355.7	346.2	-9.5
Gender	Female	392.1	373.7	-18.4	359.8	382.9	23.1	375.7	356.3	-19.4
	Male	382.4	364.7	-17.7	370.2	395.0	24.8	333.1	335.7	2.6

. No students tested in both years in this category

**Measure of Growth in SBA Math for Students Who Tested in 2005 and Again in 2006**



**Anchorage School District: Profile of Performance ..... 2005-2006**

**Alpenglow Grades 3-6 SBA Results Compared with District and State: Reading**

Reading		% Advanced			% Proficient			% Below Proficient			% Far Below Proficient			Total Students Tested	Percent Tested		
		School	District	State	School	District	State	School	District	State	School	District	State	School	School	District	State
Ethnicity	All Students	45.9%	34.6%	31.2%	45.9%	47.1%	47.1%	6.7%	12.0%	14.1%	1.6%	6.3%	7.7%	255	100.0%	98.1%	98.1%
	African American	36.4%	20.7%	21.4%	36.4%	51.1%	52.9%	27.3%	18.9%	17.1%	0.0%	9.4%	8.6%	11	100.0%	98.2%	98.5%
	AK Native/ American Indian	33.3%	19.3%	12.4%	55.6%	49.7%	45.5%	11.1%	19.1%	25.7%	0.0%	11.9%	16.4%	9	100.0%	97.5%	97.7%
	Asian	70.0%	24.7%	27.4%	10.0%	49.6%	50.7%	20.0%	16.3%	14.8%	0.0%	9.4%	7.0%	10	100.0%	97.1%	97.5%
	Caucasian	45.9%	44.8%	41.6%	47.9%	44.3%	46.3%	4.6%	7.4%	8.2%	1.5%	3.5%	3.8%	194	100.0%	98.5%	98.3%
	Hispanic	42.9%	22.4%	22.4%	35.7%	51.8%	53.0%	14.3%	17.3%	17.3%	7.1%	8.5%	7.3%	14	100.0%	97.0%	97.2%
	Multi-Ethnic	47.1%	27.4%	28.2%	52.9%	50.5%	50.5%	0.0%	14.8%	13.9%	0.0%	7.4%	7.3%	17	100.0%	98.5%	98.7%
Low Income	Yes	33.3%	18.7%	17.4%	47.6%	51.0%	48.4%	14.3%	19.4%	21.3%	4.8%	11.0%	12.9%	21	100.0%	97.6%	97.9%
	No	47.0%	45.1%	41.4%	45.7%	44.5%	46.1%	6.0%	7.2%	8.6%	1.3%	3.3%	3.8%	234	100.0%	98.4%	98.2%
Disabled	Yes	18.4%	8.8%	8.1%	44.9%	36.7%	35.2%	28.6%	28.5%	29.9%	8.2%	26.1%	26.8%	49	100.0%	93.7%	94.0%
	No	52.4%	39.1%	34.9%	46.1%	48.9%	49.1%	1.5%	9.1%	11.4%	0.0%	2.9%	4.5%	206	100.0%	98.9%	98.8%
LEP	Yes	28.6%	15.1%	9.0%	57.1%	52.1%	43.7%	14.3%	20.5%	28.6%	0.0%	12.4%	18.7%	7	100.0%	96.7%	97.3%
	No	46.4%	38.3%	35.5%	45.6%	46.1%	47.8%	6.5%	10.4%	11.2%	1.6%	5.2%	5.6%	248	100.0%	98.3%	98.2%
Migrant	Yes	*	20.0%	13.0%	*	53.7%	44.6%	*	17.1%	25.2%	*	9.2%	17.2%	*	100.0%	99.4%	98.1%
	No	45.8%	35.1%	32.3%	45.8%	46.9%	47.3%	6.7%	11.8%	13.3%	1.6%	6.2%	7.1%	253	100.0%	98.0%	98.1%
Gender	Female	51.8%	39.3%	34.9%	41.7%	46.2%	47.0%	5.0%	10.0%	12.3%	1.4%	4.5%	5.8%	139	100.0%	98.5%	98.4%
	Male	38.8%	30.0%	27.5%	50.9%	47.9%	47.2%	8.6%	13.9%	15.7%	1.7%	8.1%	9.5%	116	100.0%	97.7%	97.7%

\*The total number of students tested in this category is fewer than 5. Results cannot be reported according to the state's protocol for reporting results.

Anchorage School District: Profile of Performance ..... 2005-2006

Alpenglow Grades 3-6 SBA Results Compared with District and State: Writing

Writing		% Advanced			% Proficient			% Below Proficient			% Far Below Proficient			Total Students Tested	Percent Tested		
		School	District	State	School	District	State	School	District	State	School	District	State	School	School	District	State
Ethnicity	All Students	42.4%	31.4%	27.4%	50.2%	49.1%	48.6%	5.9%	18.0%	21.9%	1.6%	1.6%	2.1%	255	100.0%	98.1%	98.1%
	African American	27.3%	18.0%	18.8%	36.4%	50.7%	52.0%	27.3%	29.2%	27.3%	9.1%	2.1%	1.9%	11	100.0%	98.2%	98.3%
	AK Native/ American Indian	44.4%	15.5%	10.5%	55.6%	52.5%	45.2%	0.0%	28.7%	39.6%	0.0%	3.2%	4.7%	9	100.0%	97.5%	97.9%
	Asian	60.0%	25.7%	27.6%	30.0%	49.8%	51.0%	10.0%	21.9%	19.3%	0.0%	2.6%	2.0%	10	100.0%	97.0%	97.5%
	Caucasian	44.3%	40.5%	36.3%	49.5%	47.1%	49.0%	4.6%	11.6%	13.7%	1.5%	0.8%	1.0%	194	100.0%	98.5%	98.2%
	Hispanic	28.6%	20.9%	20.2%	57.1%	52.7%	55.2%	14.3%	24.5%	23.1%	0.0%	1.8%	1.5%	14	100.0%	97.0%	97.2%
	Multi-Ethnic	29.4%	25.2%	25.6%	70.6%	51.2%	51.5%	0.0%	21.8%	21.0%	0.0%	1.9%	1.9%	17	100.0%	98.5%	98.6%
Low Income	Yes	42.9%	16.4%	15.3%	47.6%	52.2%	48.7%	9.5%	28.5%	32.4%	0.0%	2.9%	3.6%	21	100.0%	97.6%	98.0%
	No	42.3%	41.3%	36.5%	50.4%	47.0%	48.6%	5.6%	11.1%	13.9%	1.7%	0.7%	0.9%	234	100.0%	98.4%	98.1%
Disabled	Yes	16.3%	7.7%	6.4%	57.1%	40.2%	38.5%	18.4%	45.6%	47.9%	8.2%	6.5%	7.2%	49	100.0%	93.8%	94.2%
	No	48.5%	35.5%	30.9%	48.5%	50.6%	50.3%	2.9%	13.1%	17.6%	0.0%	0.7%	1.2%	206	100.0%	98.9%	98.7%
LEP	Yes	0.0%	14.9%	9.1%	100.0%	53.9%	45.1%	0.0%	28.3%	41.0%	0.0%	2.9%	4.8%	7	100.0%	96.6%	97.5%
	No	43.5%	34.6%	31.0%	48.8%	48.1%	49.3%	6.0%	16.0%	18.1%	1.6%	1.3%	1.5%	248	100.0%	98.3%	98.2%
Migrant	Yes	*	20.2%	12.2%	*	50.6%	43.4%	*	26.5%	39.8%	*	2.7%	4.5%	*	100.0%	99.4%	98.3%
	No	41.9%	31.8%	28.4%	50.6%	49.0%	49.0%	5.9%	17.7%	20.7%	1.6%	1.5%	1.9%	253	100.0%	98.0%	98.1%
Gender	Female	48.9%	37.8%	33.4%	47.5%	47.8%	47.9%	3.6%	13.5%	17.4%	0.0%	1.0%	1.3%	139	100.0%	98.4%	98.4%
	Male	34.5%	25.2%	21.7%	53.4%	50.3%	49.3%	8.6%	22.3%	26.2%	3.4%	2.2%	2.8%	116	100.0%	97.7%	97.7%

\*The total number of students tested in this category is fewer than 5. Results cannot be reported according to the state's protocol for reporting results.

Anchorage School District: Profile of Performance ..... 2005-2006

Alpenglow Grades 3-6 SBA Results Compared with District and State: Math

Math		% Advanced			% Proficient			% Below Proficient			% Far Below Proficient			Total Students Tested	Percent Tested		
		School	District	State	School	District	State	School	District	State	School	District	State	School	School	District	State
Ethnicity	All Students	47.5%	38.3%	32.9%	38.4%	37.0%	38.4%	8.6%	13.1%	14.7%	5.5%	11.7%	14.0%	255	100.0%	98.4%	98.2%
	African American	36.4%	19.2%	19.7%	27.3%	39.8%	40.5%	18.2%	18.2%	19.7%	18.2%	22.9%	20.0%	11	100.0%	98.2%	98.5%
	AK Native/ American Indian	33.3%	24.5%	16.3%	44.4%	40.1%	37.1%	11.1%	17.2%	21.4%	11.1%	18.1%	25.2%	9	100.0%	97.4%	97.7%
	Asian	60.0%	33.8%	35.2%	20.0%	37.3%	39.0%	10.0%	13.7%	13.5%	10.0%	15.2%	12.4%	10	100.0%	98.6%	98.8%
	Caucasian	48.5%	47.7%	41.6%	39.2%	35.1%	38.5%	8.2%	10.3%	11.2%	4.1%	6.9%	8.6%	194	100.0%	98.5%	98.3%
	Hispanic	42.9%	27.2%	26.4%	35.7%	39.1%	40.9%	14.3%	19.3%	18.3%	7.1%	14.5%	14.4%	14	100.0%	99.0%	98.7%
	Multi-Ethnic	47.1%	31.5%	32.1%	47.1%	39.6%	39.6%	0.0%	13.9%	13.6%	5.9%	15.0%	14.7%	17	100.0%	98.7%	98.8%
Low Income	Yes	47.6%	23.2%	20.5%	23.8%	39.3%	38.6%	14.3%	18.1%	19.3%	14.3%	19.4%	21.6%	21	100.0%	98.1%	98.1%
	No	47.4%	48.3%	42.1%	39.7%	35.4%	38.3%	8.1%	9.7%	11.2%	4.7%	6.6%	8.4%	234	100.0%	98.6%	98.3%
Disabled	Yes	16.3%	12.7%	11.0%	36.7%	29.6%	28.7%	26.5%	22.4%	22.6%	20.4%	35.3%	37.7%	49	100.0%	93.7%	94.1%
	No	54.9%	42.7%	36.5%	38.8%	38.2%	40.0%	4.4%	11.4%	13.4%	1.9%	7.6%	10.1%	206	100.0%	99.3%	98.9%
LEP	Yes	28.6%	23.6%	14.7%	57.1%	38.5%	35.1%	0.0%	18.1%	22.4%	14.3%	19.8%	27.8%	7	100.0%	98.8%	98.3%
	No	48.0%	41.2%	36.5%	37.9%	36.7%	39.1%	8.9%	12.1%	13.1%	5.2%	10.1%	11.3%	248	100.0%	98.3%	98.2%
Migrant	Yes	*	25.7%	18.7%	*	38.4%	35.1%	*	17.6%	20.1%	*	18.4%	26.1%	*	100.0%	99.4%	98.1%
	No	47.4%	38.7%	33.8%	38.3%	36.9%	38.7%	8.7%	12.9%	14.3%	5.5%	11.4%	13.2%	253	100.0%	98.4%	98.2%
Gender	Female	48.9%	38.1%	33.0%	36.7%	37.8%	39.2%	8.6%	13.3%	14.8%	5.8%	10.9%	13.1%	139	100.0%	98.7%	98.5%
	Male	45.7%	38.5%	32.8%	40.5%	36.2%	37.7%	8.6%	12.9%	14.6%	5.2%	12.5%	14.9%	116	100.0%	98.1%	97.9%

\*The total number of students tested in this category is fewer than 5. Results cannot be reported according to the state's protocol for reporting results.

Anchorage School District: Profile of Performance ..... 2005-2006

Alpenglow TerraNova 5th grade

Percent in each quartile

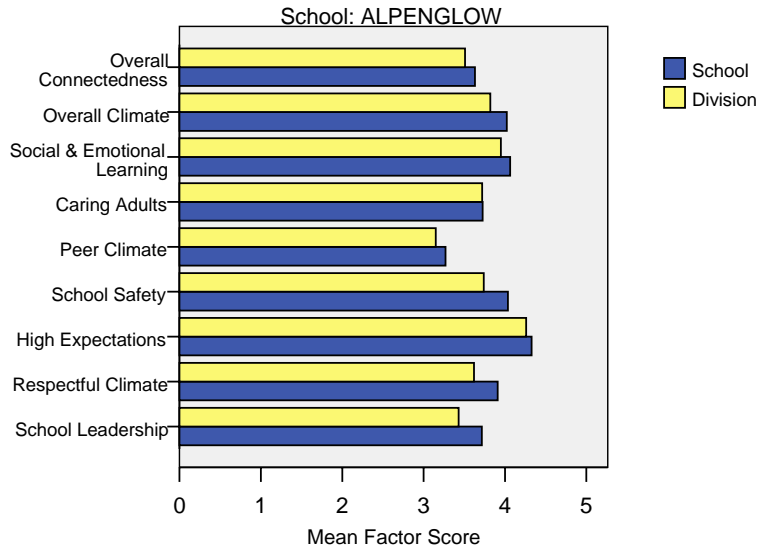
Reading	Above Average		Average				Below Average	
	4th Quartile (76-99 percentile)		3rd Quartile (51-75 percentile)		2nd Quartile (26-50 percentile)		1st Quartile (1-25 percentile)	
	School	District	School	District	School	District	School	District
2005-2006	35.7%	30.4%	45.7%	26.8%	12.9%	24.5%	5.7%	18.3%
2004-2005	49.2%	29.2%	20.0%	27.6%	21.5%	24.5%	9.2%	18.7%
2003-2004	53.9%	30.6%	25.0%	26.9%	15.8%	24.2%	5.3%	18.3%
2002-2003	37.5%	29.1%	32.5%	26.6%	21.3%	23.8%	8.8%	20.5%
2001-2002	44.3%	30.3%	27.8%	26.0%	20.6%	24.6%	7.2%	19.0%

Language	Above Average		Average				Below Average	
	4th Quartile (76-99 percentile)		3rd Quartile (51-75 percentile)		2nd Quartile (26-50 percentile)		1st Quartile (1-25 percentile)	
	School	District	School	District	School	District	School	District
2005-2006	52.9%	34.0%	25.7%	26.5%	11.4%	22.0%	10.0%	17.5%
2004-2005	43.1%	32.1%	29.2%	28.3%	20.0%	21.2%	7.7%	18.4%
2003-2004	53.9%	34.1%	27.6%	26.5%	15.8%	21.7%	2.6%	17.7%
2002-2003	48.8%	32.8%	26.3%	26.5%	15.0%	20.9%	10.0%	19.8%
2001-2002	46.4%	32.3%	32.0%	26.4%	14.4%	22.9%	7.2%	18.4%

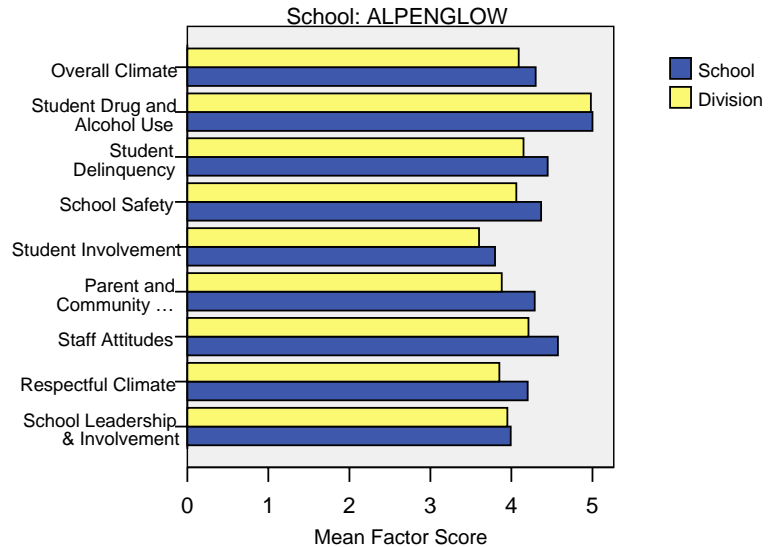
Math	Above Average		Average				Below Average	
	4th Quartile (76-99 percentile)		3rd Quartile (51-75 percentile)		2nd Quartile (26-50 percentile)		1st Quartile (1-25 percentile)	
	School	District	School	District	School	District	School	District
2005-2006	41.4%	28.4%	34.3%	31.9%	22.9%	22.3%	1.4%	17.5%
2004-2005	27.7%	26.9%	35.4%	31.1%	23.1%	22.9%	13.8%	19.1%
2003-2004	44.7%	28.3%	31.6%	29.3%	13.2%	22.6%	10.5%	19.8%
2002-2003	31.3%	24.7%	33.8%	30.6%	25.0%	22.6%	10.0%	22.1%
2001-2002	34.0%	24.1%	44.3%	30.1%	15.5%	24.8%	6.2%	20.9%

Alpenglow School Climate Survey Results

2006 Student Climate Survey Results



2006 Staff Climate Survey Results



The factors measured in the Student and Staff Climate Survey were:

- **Overall Connectedness – Student Survey:** The Overall Connectedness score for the student survey was computed as an average of three scales: Respectful Climate, Peer Climate, and Caring Adults.
- **Overall Climate – Student Survey:** The Overall Climate score for the student survey was computed as the average of three scales: School Leadership, High Expectations, and School Safety.
- **Overall Climate – Staff Survey:** The Overall Climate score for the staff survey was computed as the average of 6 scales: School Leadership, Respectful Climate, Staff Attitudes, Parent and Community Involvement, Student Involvement, School Safety, Student Delinquency, and Drug and Alcohol Use scores.
- **School Leadership:** Reflects feelings about the decision making of school leaders, fairness of school rules, and student participation in school governance. 1 indicates a low level of school leadership and 5 indicates a high level of school leadership.
- **Respectful Climate:** Fairness of rules and how well students and staff treat one another. 1 indicates a lack of respect and 5 indicates a highly respectful climate.
- **High Expectations:** Expectations of students from peers and adults. 1 indicates a lack of high expectations and 5 indicates very high expectations.

- **School Safety:** Presence of school bullies, gangs and general crime and violence in the community. 1 indicates a low level of safety and 5 indicates a high level of safety.
- **Peer Climate:** Reflects feelings about how respectful and helpful students are to one another. 1 indicates a negative peer climate and 5 indicates a very positive climate.
- **Caring Adults:** Reflects the caring adult relationships students have in the school. 1 indicates a lack of caring relationships and 5 indicates a high number of caring adults.
- **Social & Emotional Learning:** Reflects students' ability to think about the consequences of their actions and to empathize with others. 1 indicates poor social and emotional learning and 5 indicates higher levels of social and emotional learning.
- **Staff Attitudes:** Reflects feelings about competence and attitude towards jobs. 1 indicates more negative attitudes and 5 indicates highly positive attitudes.
- **Parent and Community Involvement:** Accessibility of the school for parents and how connected adults in the community are to the school. 1 indicates a low level of parent and community involvement and 5 indicates a high level of parent and community involvement.
- **Student Involvement:** Reflects feelings about how involved students are in the schools' decision making process. 1 indicates a low level of student involvement and 5 indicates a high level of student involvement.
- **Student Delinquency:** Reflects staff members' reports of witnessed student fights, stealing, and bullying. 1 indicates a high level of delinquency and 5 indicates a low level (5 is most desired).
- **Student Drug and Alcohol Use:** Reflects staff members' reports of observing students under the influence of drugs or alcohol. 1 indicates a high level of drug and alcohol use and 5 indicates a low level (5 is most desired).