

Table 83

Benson Secondary School Overview

Statement of Program

Benson Secondary School is actually two schools in one. There is a high school and a middle school program on the site. The middle school, Search, is designed to serve approximately 100 “at risk” middle school aged students who have previously been retained at grade level at some point during their school career. Instruction is offered in a fairly traditional format and class size is held to 23 students or less. The high school program, Save II, serves approximately 200 students of high school age who have fallen significantly behind in credit accumulation toward graduation. Instruction is offered on an individualized contract basis. Class size is held to 13 or less.

From the Report Card/MLP

SCHOOL GOALS	
Goal	Level of Achievement
Increase upper level math credit earned by students by 10%	Attained
Increase upper level language arts credit earned by students by 100%	Attained

From the Report Card/MLP

BUDGET*	
2004-2005 Actual Expenditures	\$1,779,028
2004-06 Revised Budgeted Amount	\$1,833,884
2006-07 Proposed Budget	\$1,985,473
*Dollars budgeted or expended are general fund only.	

From IFAS

	School	District	Source of Information
Membership	302	50,051	Fall OASIS
Capacity	N/A	N/A	Board Report - #189 3/7/06
Attendance Rate	89%	93%	SMS end of year report
Transiency Rate	64.59%	22.72%	Report Card File
Economically Disadvantaged	115	16,769	Fall OASIS
Ave. Weekly Volunteer Hours	0	5,032	Report Card File
Graduation Rate	44.5%	63.9%	Cohort group rate – NCLB formula
Dropout Rate	20.47%	5..78%	OASIS end of year report
AP courses offered in 2005-2006	0	25	SMS transcript file
Students successfully completing AP courses	0	1,386	SMS transcript file
AP courses completed by students	0	2,524	SMS transcript file
Students Taking an Alternate Assessment	0	264	SMS
Students Taking a HSGQE Alternative Assessment	16	270	SMS
Change in Enrollment	6.9%	0.3%	Report Card File

Benson Secondary School Characteristics

Teacher Qualification				
# of teachers	% fully licensed	% with advanced degrees	# Nationally Board Certified	% of classes taught by "highly qualified teachers"
19	100%	66%	0	90%

SCHOOL BUSINESS PARTNERSHIPS
None listed

From MLP

ACCREDITATION		
Initial Accreditation	Name of Accrediting Organization	Level of Accreditation
1978	Northwest Association of Accredited Schools	Full

ETHNICITY REPORT - OCTOBER 2005						
Caucasian	African American	AK Native/ American Indian	Asian/ Pac. Islander	Hispanic	Multi-Ethnic	Total
132 43.71%	44 14.57%	65 21.52%	23 7.62%	20 6.62%	18 5.96%	302 100.00%

From Fall Oasis

TOTAL DROPOUT RATES							
Data Type	AK Native/ American Indian	Asian/ Pac. Islander	African American	Hispanic	Caucasian	Multi-Ethnic	Total
Enrollment	94	32	60	35	189	20	430
Final Dropouts	28	6	12	7	32	3	88
% of Dropouts	29.8%	18.8%	20.0%	20.0%	16.9%	15.0%	20.5%

From Summer Oasis

FULL ACADEMIC YEAR (FAY)		
Students Enrolled	Students Enrolled for FAY	Percent FAY
106	42	39.6%

From participation file (3-10 graders)

Anchorage School District
2005-2006 Adequate Yearly Progress

Benson Secondary School

AMO For Language Arts: 71.48%
AMO For Math: 57.61%

Does Not Meet AYP
Level 4

Group	Participation Rate				"FAY"	Language Arts Performance				Math Performance			
	(A) Number Enrolled	(B) Number Tested	Participation Rate (%)	(C) Participation Rate Met	(D) Tested and Enrolled "FAY"	(E) Proficient on LA	(F) Percent Proficient on LA	(G) LA Target	(H) Met AMO for LA	(I) Proficient on Math	(J) Percent Proficient in Math	(K) Math Target	(L) Met AMO for Math
All Students	106	100	94.3%	No	41	17	41.5%	55.1%	No	9	22%	39.6%	No
African American	13	13	N/A	N/A	N/A	N/A	N/A	N/A	N/A	N/A	N/A	N/A	N/A
AkNa & Amln	33	29	87.9%	No	N/A	N/A	N/A	N/A	N/A	N/A	N/A	N/A	N/A
Asian	<5	<5	N/A	N/A	N/A	N/A	N/A	N/A	N/A	N/A	N/A	N/A	N/A
Caucasian	46	46	100%	Yes	N/A	N/A	N/A	N/A	N/A	N/A	N/A	N/A	N/A
Hispanic	8	7	N/A	N/A	N/A	N/A	N/A	N/A	N/A	N/A	N/A	N/A	N/A
Multi-Ethnic	<5	<5	N/A	N/A	N/A	N/A	N/A	N/A	N/A	N/A	N/A	N/A	N/A
Low Income	62	58	93.5%	No	27	8	29.6%	51.2%	Yes-SH	6	22.2%	35.5%	Yes-SH
Disabled	14	14	N/A	N/A	N/A	N/A	N/A	N/A	N/A	N/A	N/A	N/A	N/A
LEP	14	12	N/A	N/A	N/A	N/A	N/A	N/A	N/A	N/A	N/A	N/A	N/A

Graduation Rate (IMP) : 44.5% (Threshold is 55.58%)

N/A is used to indicate when a group does not need to be evaluated when:

(1) 20 or fewer students are enrolled in a group for all groups except "All Students".

(2) 40 or fewer students are enrolled FAY (column D) in the Disabled & LEP groups.

* For the groups where the number enrolled is fewer than or equal to 40, participation is met when no more than 2 miss the test. Groups can also meet this target using the average of the past two or three years.

** Where a group achieves a "Yes" without meeting the listed target, it has done so using either the 99% confidence interval or Safe Harbor.

*** Results cannot be published without releasing personally identifiable information.

This document was prepared by the ASD Assessment and Evaluation

7/19/2006

Anchorage School District: Profile of Performance 2005-06

Benson TerraNova 7th grade

Percent in each quartile

Reading	Above Average		Average				Below Average	
	4th Quartile (76-99 percentile)		3rd Quartile (51-75 percentile)		2nd Quartile (26-50 percentile)		1st Quartile (1-25 percentile)	
	School	District	School	District	School	District	School	District
2005-2006	7.7%	34.6%	3.8%	28.4%	34.6%	21.8%	53.8%	15.3%
2004-2005	18.2%	33.9%	18.2%	27.1%	18.2%	21.7%	45.5%	17.4%
2003-2004	11.8%	35.1%	41.2%	28.2%	29.4%	21.4%	17.6%	15.3%
2002-2003	23.1%	35.3%	15.4%	28.9%	15.4%	20.1%	46.2%	15.7%
2001-2002	14.3%	34.4%	14.3%	28.6%	28.6%	20.9%	42.9%	16.2%

Language	Above Average		Average				Below Average	
	4th Quartile (76-99 percentile)		3rd Quartile (51-75 percentile)		2nd Quartile (26-50 percentile)		1st Quartile (1-25 percentile)	
	School	District	School	District	School	District	School	District
2005-2006	11.5%	34.9%	0.0%	28.4%	23.1%	21.4%	65.4%	15.3%
2004-2005	22.7%	34.4%	13.6%	28.2%	18.2%	20.5%	45.5%	16.9%
2003-2004	17.6%	35.3%	23.5%	28.5%	35.3%	21.7%	23.5%	14.5%
2002-2003	0.0%	34.2%	23.1%	29.8%	30.8%	22.0%	46.2%	14.0%
2001-2002	7.1%	34.0%	28.6%	29.7%	28.6%	20.6%	35.7%	15.7%

Math	Above Average		Average				Below Average	
	4th Quartile (76-99 percentile)		3rd Quartile (51-75 percentile)		2nd Quartile (26-50 percentile)		1st Quartile (1-25 percentile)	
	School	District	School	District	School	District	School	District
2005-2006	4.0%	31.4%	8.0%	27.8%	32.0%	23.4%	56.0%	17.4%
2004-2005	0.0%	29.7%	13.6%	26.4%	36.4%	22.9%	50.0%	20.9%
2003-2004	0.0%	30.2%	17.6%	27.6%	17.6%	23.9%	64.7%	18.4%
2002-2003	0.0%	31.2%	15.4%	26.9%	23.1%	23.1%	61.5%	18.8%
2001-2002	7.1%	29.7%	14.3%	27.5%	28.6%	22.9%	50.0%	19.9%

Anchorage School District: Profile of Performance 2005-06

Benson HSGQE - 10th Grade Results

Reading	Proficient		Not Proficient	
	School	District	School	District
2005-2006	57.1%	76.4%	42.9%	23.6%
2004-2005	50.0%	72.5%	50.0%	27.5%
2003-2004	0.0%	73.3%	100.0%	26.7%
2002-2003	30.8%	72.8%	69.2%	27.1%

Writing	Proficient		Not Proficient	
	School	District	School	District
2005-2006	100.0%	90.8%	0.0%	9.2%
2004-2005	75.0%	85.6%	25.0%	14.4%
2003-2004	55.6%	87.0%	44.4%	13.0%
2002-2003	33.3%	85.4%	66.6%	14.6%

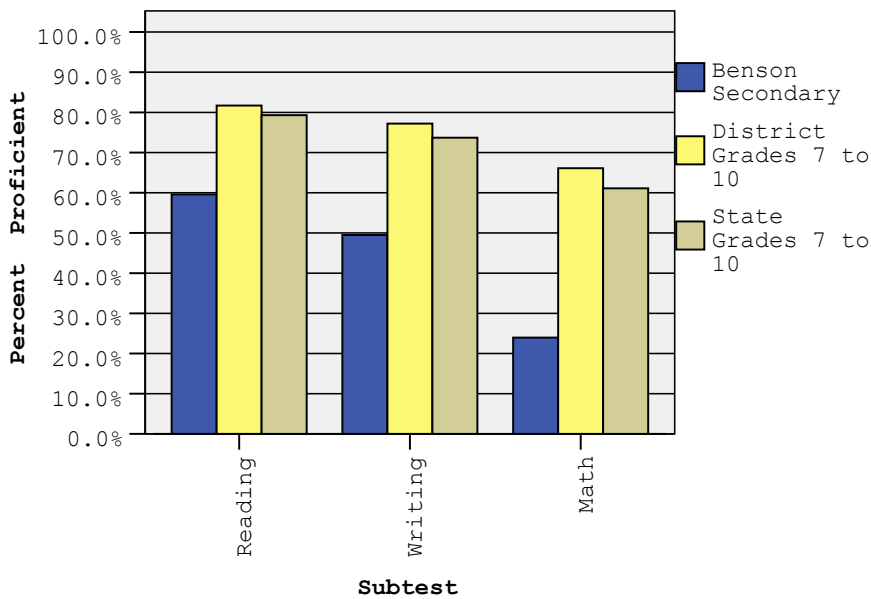
Math	Proficient		Not Proficient	
	School	District	School	District
2005-2006	42.9%	79.9%	57.1%	20.1%
2004-2005	57.2%	76.3%	42.9%	14.4%
2003-2004	0.0%	69.8%	100.0%	30.2%
2002-2003	50.0%	74.3%	50.0%	25.7%

Benson HSGQE Scores Spring 2006				
Students	Proficient		Not Proficient	
	Number	Percent	Number	Percent
Grade 10				
Reading	*	*	*	*
Writing	7	100.0%	0	0.0%
Math	*	*	*	*

Benson Secondary School SBA Proficiency – Spring 2006

	Reading		Writing		Math	
	2005 Proficient	2006 Proficient	2005 Proficient	2006 Proficient	2005 Proficient	2006 Proficient
All Grades	43.3%	59.6%	31.3%	49.5%	17.2%	24.0%
7th Grade	46.7%	44.0%	41.4%	44.0%	25.9%	16.7%
8th Grade	47.1%	57.4%	33.3%	36.2%	18.0%	30.4%
9th Grade	25.0%	80.0%	6.3%	75.0%	.0%	21.1%
10th Grade	N/A	71.4%	N/A	85.7%	N/A	14.3%

SBA Spring 2006 Proficiency Rate Comparison of School, District, and State *



* District and State Grades 7 to 10

Anchorage School District: Profile of Performance 2005-06

Benson SBA Proficiency by NCLB Groups – Spring 2006

		Reading		Writing		Math	
		Proficient	Not Proficient	Proficient	Not Proficient	Proficient	Not Proficient
Ethnicity	All Students	59.6%	40.4%	49.5%	50.5%	24.0%	76.0%
	African American	61.5%	38.5%	53.8%	46.2%	30.8%	69.2%
	AK Native/ American Indian	42.9%	57.1%	34.5%	65.5%	28.6%	71.4%
	Asian	0.0%	100.0%	0.0%	100.0%	0.0%	100.0%
	Caucasian	69.6%	30.4%	55.6%	44.4%	20.9%	79.1%
	Hispanic	71.4%	28.6%	85.7%	14.3%	14.3%	85.7%
	Multi-Ethnic	100.0%	0.0%	50.0%	50.0%	50.0%	50.0%
Low Income	Yes	49.1%	50.9%	44.8%	55.2%	21.4%	78.6%
	No	73.8%	26.2%	56.1%	43.9%	27.5%	72.5%
Disabled	Yes	50.0%	50.0%	35.7%	64.3%	7.1%	92.9%
	No	61.2%	38.8%	51.8%	48.2%	26.8%	73.2%
LEP	Yes	33.3%	66.7%	41.7%	58.3%	25.0%	75.0%
	No	63.2%	36.8%	50.6%	49.4%	23.8%	76.2%
Migrant	Yes	25.0%	75.0%	25.0%	75.0%	0.0%	100.0%
	No	62.6%	37.4%	51.6%	48.4%	26.1%	73.9%
Gender	Female	71.9%	28.1%	62.5%	37.5%	22.6%	77.4%
	Male	53.7%	46.3%	43.3%	56.7%	24.6%	75.4%

Anchorage School District: Profile of Performance 2005-06

Benson SBA Mean Scale Score Comparison: 2004-2005 to 2005-2006

		Reading		Writing		Math	
		2004-2005 Mean Scale Score	2005-2006 Mean Scale Score	2004-2005 Mean Scale Score	2005-2006 Mean Scale Score	2004-2005 Mean Scale Score	2005-2006 Mean Scale Score
Ethnicity	All Students	300.4	317.3	279.1	292.6	249.8	266.9
	African American	273.0	320.7	228.1	288.7	233.6	273.0
	AK Native/ American Indian	298.6	308.7	277.7	281.4	252.3	261.2
	Asian	273.6	266.5	253.9	251.0	244.7	238.0
	Caucasian	319.3	323.1	294.6	298.2	259.6	266.1
	Hispanic	268.1	320.3	257.9	324.3	212.8	283.9
	Multi-Ethnic	253.0	333.5	285.8	290.0	242.0	293.5
Low Income	Yes	285.6	306.2	268.7	284.3	239.9	259.0
	No	314.8	333.9	289.1	305.6	260.5	279.2
Disabled	Yes	273.4	302.9	237.3	265.4	221.0	239.4
	No	305.7	319.7	286.9	297.1	255.0	271.6
LEP	Yes	257.2	282.1	259.9	285.1	225.8	262.9
	No	305.9	322.1	281.6	293.7	253.4	267.5
Migrant	Yes	.	279.1	.	248.3	.	235.0
	No	300.4	321.0	279.1	296.9	249.8	270.1
Gender	Female	302.4	330.4	282.7	321.3	241.5	260.6
	Male	299.2	311.0	277.0	278.8	254.2	270.0

. No students tested in both years in this category

Anchorage School District: Profile of Performance 2005-06

Benson SBA Growth in Average Scale Score by NCLB Groups: Reading

		Average Scale Score of Students Tested in District Both Years			Average Scale Score of Students Tested in District Both Years		
		Grade 6 in 2005	Grade 7 in 2006	Difference	Grade 7 in 2005	Grade 8 in 2006	Difference
Ethnicity	All Students	306.4	306.7	0.3	297.2	313.0	15.8
	African American	289.9	297.1	7.2	286.3	321.8	35.5
	AK Native/ American Indian	260.0	273.9	13.9	306.2	324.2	18.0
	Asian	.	.	.	295.7	267.3	-28.4
	Caucasian	331.2	321.0	-10.2	310.1	315.7	5.6
	Hispanic	272.3	285.8	13.5	320.4	303.7	-16.7
	Multi-Ethnic	295.7	302.2	6.5	.	.	.
Low Income	Yes	275.7	289.3	13.7	290.0	309.4	19.4
	No	350.1	328.7	-21.4	311.8	320.9	9.1
Disabled	Yes	207.4	244.7	37.3	263.2	279.0	15.8
	No	313.9	312.1	-1.8	302.3	318.8	16.5
LEP	Yes	254.0	278.4	24.4	293.7	290.2	-3.5
	No	312.8	310.9	-1.9	296.7	317.3	20.7
Migrant	Yes	292.2	291.0	-1.2	259.1	276.7	17.6
	No	306.3	306.8	0.5	305.4	319.7	14.3
Gender	Female	263.7	290.2	26.5	286.9	318.1	31.2
	Male	318.7	311.3	-7.3	300.0	311.4	11.4

. No students tested in both years in this category

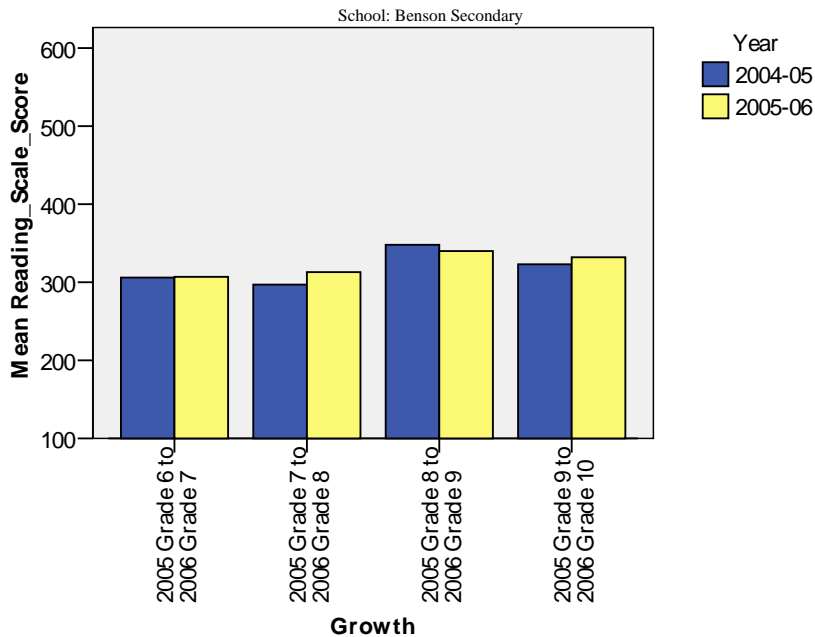
Anchorage School District: Profile of Performance 2005-06

Benson SBA Growth in Average Scale Score by NCLB Groups: Reading

		Average Scale Score of Students Tested in District Both Years			Average Scale Score of Students Tested in District Both Years		
		Grade 8 in 2005	Grade 9 in 2006	Difference	Grade 9 in 2005	Grade 10 in 2006	Difference
Ethnicity	All Students	348.1	339.7	-8.4	323.3	331.7	8.4
	African American	.	381.7	.	269.7	319.6	49.9
	AK Native/American Indian	370.9	324.6	-46.3	.	325.1	.
	Asian	.	.	.	276.1	273.4	-2.7
	Caucasian	337.8	338.9	1.1	356.4	351.9	-4.5
	Hispanic	350.2	348.0	-2.2	.	.	.
	Multi-Ethnic	375.3	364.8	-10.5	.	.	.
Low Income	Yes	326.7	321.2	-5.5	275.8	299.2	23.4
	No	361.7	356.3	-5.3	335.2	346.3	11.1
Disabled	Yes	396.1	373.7	-22.4	400.3	351.7	-48.6
	No	336.4	331.7	-4.7	303.7	328.6	24.9
LEP	Yes	273.9	237.1	-36.8	275.6	273.1	-2.5
	No	353.0	346.4	-6.6	335.1	342.4	7.3
Migrant	Yes
	No	348.2	340.0	-8.2	322.9	332.0	9.1
Gender	Female	388.3	360.8	-27.5	276.0	298.8	22.8
	Male	312.7	309.2	-3.5	334.8	346.2	11.4

. No students tested in both years in this category

Measure of Growth in SBA Reading for Students Who Tested in 2005 and Again in 2006



Anchorage School District: Profile of Performance 2005-06

Benson SBA Growth in Average Scale Score by NCLB Groups: Writing

		Average Scale Score of Students Tested in District Both Years			Average Scale Score of Students Tested in District Both Years		
		Grade 6 in 2005	Grade 7 in 2006	Difference	Grade 7 in 2005	Grade 8 in 2006	Difference
Ethnicity	All Students	295.3	280.8	-14.5	276.4	280.7	4.3
	African American	286.7	303.2	16.5	256.9	278.1	21.2
	AK Native/ American Indian	293.7	245.3	-48.4	222.5	253.9	31.4
	Asian	.	.	.	267.8	250.9	-16.9
	Caucasian	298.4	278.7	-19.7	297.2	287.0	-10.2
	Hispanic	312.9	322.1	9.2	282.3	311.8	29.5
	Multi-Ethnic	280.0	254.4	-25.7	.	.	.
Low Income	Yes	283.8	274.9	-8.9	265.7	275.3	9.7
	No	309.2	288.0	-21.2	297.1	292.7	-4.4
Disabled	Yes	265.3	217.8	-47.5	228.4	218.7	-9.7
	No	295.7	286.2	-9.5	282.9	291.1	8.2
LEP	Yes	285.7	268.3	-17.4	269.0	285.4	16.4
	No	296.1	281.7	-14.4	276.8	279.9	3.1
Migrant	Yes	342.4	243.7	-98.7	257.2	249.0	-8.2
	No	292.9	282.1	-10.8	280.3	285.8	5.5
Gender	Female	276.0	286.4	10.4	284.7	297.2	12.5
	Male	300.8	278.9	-21.9	272.7	274.3	1.7

. No students tested in both years in this category

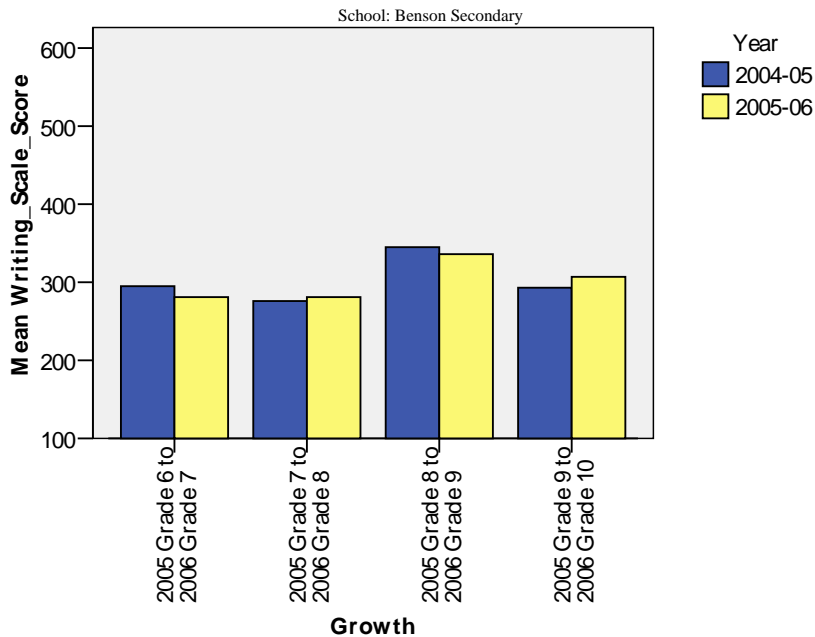
Anchorage School District: Profile of Performance 2005-06

Benson SBA Growth in Average Scale Score by NCLB Groups: Writing

		Average Scale Score of Students Tested in District Both Years			Average Scale Score of Students Tested in District Both Years		
		Grade 8 in 2005	Grade 9 in 2006	Difference	Grade 9 in 2005	Grade 10 in 2006	Difference
Ethnicity	All Students	345.2	336.0	-9.2	293.1	306.7	13.6
	African American	.	330.8	.	324.4	308.7	-15.7
	AK Native/American Indian	369.7	339.7	-30.0	.	343.1	.
	Asian	.	.	.	257.0	254.4	-2.7
	Caucasian	348.1	335.7	-12.4	293.8	309.9	16.1
	Hispanic	342.4	336.7	-5.7	.	.	.
	Multi-Ethnic	289.9	326.1	36.2	.	.	.
Low Income	Yes	337.0	333.4	-3.6	256.7	299.2	42.5
	No	350.8	338.9	-11.9	301.7	310.3	8.7
Disabled	Yes	386.2	370.0	-16.2	312.1	301.7	-10.4
	No	335.3	327.8	-7.5	288.4	306.7	18.3
LEP	Yes	316.7	337.2	20.5	256.9	254.1	-2.8
	No	346.7	336.3	-10.4	302.0	315.4	13.4
Migrant	Yes
	No	345.4	335.7	-9.7	293.2	307.0	13.8
Gender	Female	395.9	362.1	-33.8	257.3	298.8	41.5
	Male	301.0	297.4	-3.6	301.7	310.2	8.5

. No students tested in both years in this category

Measure of Growth in SBA Writing for Students Who Tested in 2005 and Again in 2006



Anchorage School District: Profile of Performance 2005-06

Benson SBA Growth in Average Scale Score by NCLB Groups: Math

		Average Scale Score of Students Tested in District Both Years			Average Scale Score of Students Tested in District Both Years		
		Grade 6 in 2005	Grade 7 in 2006	Difference	Grade 7 in 2005	Grade 8 in 2006	Difference
Ethnicity	All Students	274.9	258.1	-16.8	269.3	265.8	-3.5
	African American	266.0	228.4	-37.7	282.7	297.2	14.5
	AK Native/American Indian	276.8	253.9	-22.9	250.2	240.3	-9.8
	Asian	.	.	.	245.1	237.7	-7.4
	Caucasian	268.3	246.8	-21.5	269.4	263.7	-5.7
	Hispanic	338.7	298.2	-40.5	275.9	282.1	6.2
	Multi-Ethnic	274.7	311.3	36.7	.	.	.
Low Income	Yes	262.1	247.7	-14.4	262.8	259.9	-2.9
	No	290.4	270.7	-19.7	282.2	279.0	-3.2
Disabled	Yes	191.9	210.1	18.2	213.3	217.8	4.5
	No	278.0	262.4	-15.7	277.7	274.2	-3.5
LEP	Yes	268.8	263.9	-4.9	251.7	262.3	10.7
	No	275.2	257.0	-18.2	271.1	265.7	-5.4
Migrant	Yes	339.3	274.8	-64.5	258.4	228.7	-29.7
	No	271.7	257.2	-14.5	270.9	272.1	1.2
Gender	Female	237.7	232.3	-5.3	250.0	248.4	-1.7
	Male	284.1	263.7	-20.4	274.8	271.9	-2.9

. No students tested in both years in this category

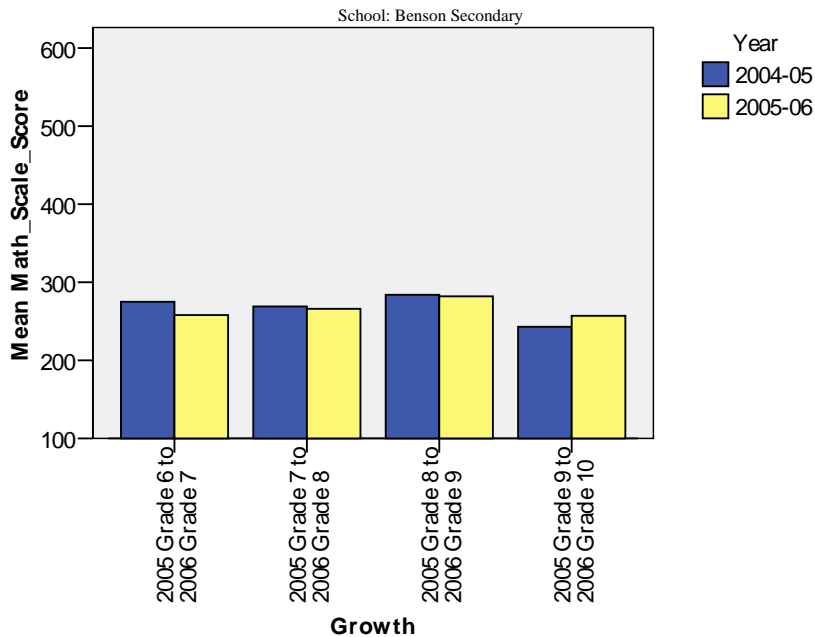
Anchorage School District: Profile of Performance 2005-06

Benson SBA Growth in Average Scale Score by NCLB Groups: Math

		Average Scale Score of Students Tested in District Both Years			Average Scale Score of Students Tested in District Both Years		
		Grade 8 in 2005	Grade 9 in 2006	Difference	Grade 9 in 2005	Grade 10 in 2006	Difference
Ethnicity	All Students	284.4	281.7	-2.7	243.2	257.0	14.0
	African American	.	221.1	.	263.3	234.8	-28.0
	AK Native/American Indian	285.0	264.4	-20.7	.	304.2	.
	Asian	.	.	.	253.7	207.3	-47.0
	Caucasian	281.2	290.0	8.8	233.1	262.7	30.0
	Hispanic	292.3	280.8	-11.5	.	.	.
	Multi-Ethnic	272.7	276.2	3.5	.	.	.
Low Income	Yes	268.7	274.3	5.7	254.0	256.4	2.0
	No	296.1	286.7	-9.4	240.8	256.9	16.0
Disabled	Yes	319.4	290.7	-28.7	197.2	235.0	38.0
	No	275.9	279.1	3.2	255.3	259.8	5.0
LEP	Yes	235.0	267.4	32.4	253.7	207.2	-47.0
	No	290.8	282.9	-7.9	240.7	265.3	24.0
Migrant	Yes
	No	284.3	281.8	-2.5	243.4	256.7	14.0
Gender	Female	318.7	285.2	-33.5	253.9	256.1	2.0
	Male	255.7	276.3	20.7	241.0	257.4	16.0

. No students tested in both years in this category

Measure of Growth in SBA Math for Students Who Tested in 2005 and Again in 2006



Anchorage School District: Profile of Performance 2005-06

Benson Grades 7-10 SBA Results Compared with District and State: Reading

Reading		% Advanced			% Proficient			% Below Proficient			% Far Below Proficient			Total Students Tested	Percent Tested		
		School	District	State	School	District	State	School	District	State	School	District	State	School	School	District	State
Ethnicity	All Students	12.1%	35.6%	32.6%	47.5%	46.1%	46.7%	34.3%	13.8%	15.8%	6.1%	4.5%	5.0%	106	94.3%	96.1%	95.5%
	African American	15.4%	18.2%	18.2%	46.2%	50.1%	51.5%	38.5%	23.1%	22.7%	0.0%	8.6%	7.5%	13	100.0%	95.7%	95.8%
	AK Native/ American Indian	10.7%	18.4%	13.8%	32.1%	49.2%	47.5%	42.9%	23.6%	28.3%	14.3%	8.8%	10.3%	33	87.9%	93.3%	94.2%
	Asian	*	21.7%	24.0%	*	51.1%	51.7%	*	20.0%	18.5%	*	7.3%	5.8%	*	75.0%	96.7%	96.1%
	Caucasian	13.0%	46.9%	43.7%	56.5%	43.3%	44.9%	26.1%	7.8%	9.0%	4.3%	2.0%	2.3%	46	100.0%	97.0%	96.0%
	Hispanic	14.3%	19.8%	21.9%	57.1%	50.6%	50.9%	28.6%	22.4%	20.6%	0.0%	7.2%	6.5%	8	87.5%	94.0%	93.8%
	Multi-Ethnic	*	27.4%	27.1%	*	46.7%	49.6%	*	19.1%	17.8%	*	6.8%	5.5%	*	100.0%	94.6%	95.1%
Low Income	Yes	8.8%	16.0%	17.0%	40.4%	49.8%	48.4%	42.1%	24.2%	25.3%	8.8%	10.0%	9.3%	62	93.5%	93.9%	95.0%
	No	16.7%	43.8%	41.0%	57.1%	44.5%	45.7%	23.8%	9.5%	10.7%	2.4%	2.2%	2.7%	44	95.5%	97.1%	95.7%
Disabled	Yes	14.3%	5.8%	5.5%	35.7%	36.0%	34.2%	28.6%	36.6%	37.8%	21.4%	21.6%	22.6%	14	100.0%	88.6%	89.3%
	No	11.8%	39.3%	36.0%	49.4%	47.3%	48.2%	35.3%	11.0%	13.0%	3.5%	2.4%	2.8%	92	93.5%	97.1%	96.3%
LEP	Yes	0.0%	8.3%	6.0%	33.3%	51.5%	45.8%	58.3%	28.9%	34.9%	8.3%	11.3%	13.3%	14	85.7%	94.5%	94.7%
	No	13.8%	40.3%	37.1%	49.4%	45.1%	46.8%	31.0%	11.2%	12.5%	5.7%	3.4%	3.6%	92	95.7%	96.4%	95.6%
Migrant	Yes	0.0%	18.3%	16.5%	25.0%	51.8%	45.9%	62.5%	19.2%	26.8%	12.5%	10.7%	10.8%	9	88.9%	94.6%	96.2%
	No	13.2%	36.1%	33.7%	49.5%	45.9%	46.7%	31.9%	13.6%	15.0%	5.5%	4.3%	4.6%	97	94.8%	96.2%	95.4%
Gender	Female	18.8%	38.4%	35.2%	53.1%	46.7%	47.8%	21.9%	11.9%	13.5%	6.3%	3.0%	3.6%	34	94.1%	96.5%	95.7%
	Male	9.0%	33.0%	30.1%	44.8%	45.5%	45.6%	40.3%	15.6%	17.9%	6.0%	5.9%	6.4%	72	94.4%	95.7%	95.2%

*The total number of students tested in this category is fewer than 5. Results cannot be reported according to the state's protocol for reporting results.

Anchorage School District: Profile of Performance 2005-06

Benson Grades 7-10 SBA Results Compared with District and State: Writing

Writing		% Advanced			% Proficient			% Below Proficient			% Far Below Proficient			Total Students Tested	Percent Tested		
		School	District	State	School	District	State	School	District	State	School	District	State	School	School	District	State
Ethnicity	All Students	0.0%	9.6%	7.9%	49.5%	67.7%	65.8%	36.4%	16.8%	19.3%	14.1%	6.0%	6.9%	106	94.3%	96.1%	95.4%
	African American	0.0%	3.0%	3.3%	53.8%	61.4%	62.2%	23.1%	24.6%	24.2%	23.1%	10.9%	10.3%	13	100.0%	96.0%	95.9%
	AK Native/ American Indian	0.0%	2.7%	2.0%	34.5%	56.5%	52.0%	48.3%	29.3%	32.7%	17.2%	11.5%	13.2%	33	87.9%	93.2%	94.1%
	Asian	*	6.0%	6.3%	*	63.6%	66.5%	*	22.1%	20.4%	*	8.3%	6.8%	*	75.0%	96.9%	96.0%
	Caucasian	0.0%	13.4%	11.3%	55.6%	72.7%	72.2%	33.3%	10.8%	12.7%	11.1%	3.2%	3.8%	46	100.0%	97.0%	95.9%
	Hispanic	0.0%	4.5%	4.6%	85.7%	64.2%	64.0%	14.3%	23.3%	23.2%	0.0%	8.0%	8.2%	8	87.5%	93.8%	93.8%
	Multi-Ethnic	*	7.0%	6.6%	*	61.4%	64.4%	*	22.9%	22.0%	*	8.8%	7.0%	*	100.0%	94.6%	95.0%
Low Income	Yes	0.0%	3.1%	3.1%	44.8%	56.2%	55.0%	37.9%	29.0%	29.7%	17.2%	11.7%	12.2%	62	93.5%	93.6%	94.8%
	No	0.0%	12.2%	10.5%	56.1%	72.5%	71.6%	34.1%	11.7%	13.8%	9.8%	3.6%	4.1%	44	95.5%	97.2%	95.7%
Disabled	Yes	0.0%	0.7%	0.5%	35.7%	28.8%	26.9%	21.4%	40.8%	42.1%	42.9%	29.7%	30.5%	14	100.0%	89.3%	89.6%
	No	0.0%	10.7%	8.9%	51.8%	72.5%	70.7%	38.8%	13.8%	16.5%	9.4%	3.0%	4.0%	92	93.5%	97.0%	96.2%
LEP	Yes	0.0%	1.7%	1.0%	41.7%	53.0%	45.3%	41.7%	32.5%	37.7%	16.7%	12.8%	16.0%	14	85.7%	94.7%	94.8%
	No	0.0%	10.9%	9.1%	50.6%	70.2%	69.3%	35.6%	14.1%	16.2%	13.8%	4.8%	5.4%	92	95.7%	96.4%	95.5%
Migrant	Yes	0.0%	4.1%	2.7%	25.0%	53.9%	52.9%	62.5%	30.4%	31.8%	12.5%	11.5%	12.6%	9	88.9%	93.7%	96.2%
	No	0.0%	9.7%	8.3%	51.6%	68.1%	66.7%	34.1%	16.4%	18.4%	14.3%	5.8%	6.5%	97	94.8%	96.2%	95.4%
Gender	Female	0.0%	12.5%	10.8%	62.5%	71.8%	70.7%	31.3%	12.6%	14.8%	6.3%	3.1%	3.7%	34	94.1%	96.5%	95.6%
	Male	0.0%	6.8%	5.3%	43.3%	63.8%	61.1%	38.8%	20.8%	23.6%	17.9%	8.7%	10.0%	72	94.4%	95.8%	95.2%

*The total number of students tested in this category is fewer than 5. Results cannot be reported according to the state's protocol for reporting results.

Anchorage School District: Profile of Performance 2005-06

Benson Grades 7-10 SBA Results Compared with District and State: Math

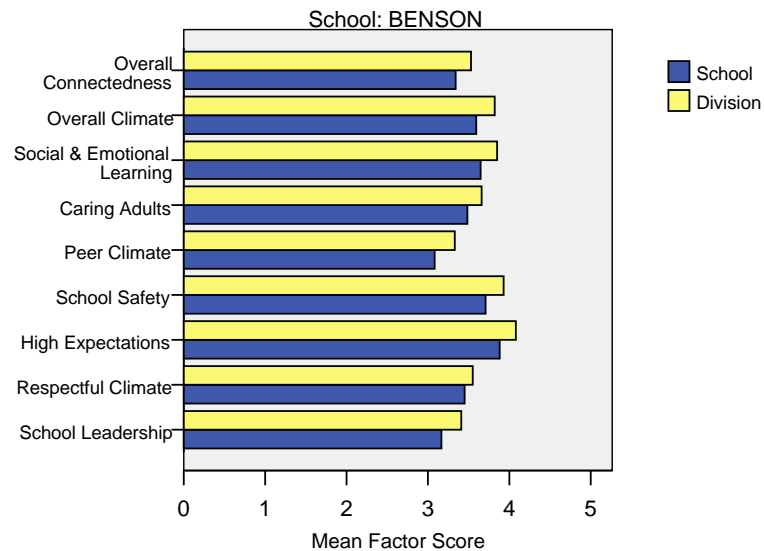
Math		% Advanced			% Proficient			% Below Proficient			% Far Below Proficient			Total Students Tested	Percent Tested		
		School	District	State	School	District	State	School	District	State	School	District	State	School	School	District	State
Ethnicity	All Students	3.1%	27.5%	22.6%	20.8%	38.5%	38.5%	31.3%	18.0%	20.4%	44.8%	15.9%	18.4%	106	94.3%	96.0%	95.3%
	African American	7.7%	10.9%	10.7%	23.1%	33.2%	33.1%	7.7%	25.0%	26.0%	61.5%	30.9%	30.2%	13	100.0%	95.8%	95.7%
	AK Native/ American Indian	0.0%	14.0%	9.8%	28.6%	37.0%	33.2%	25.0%	23.7%	25.9%	46.4%	25.2%	31.1%	33	87.9%	92.2%	93.7%
	Asian	*	23.7%	24.9%	*	39.0%	39.6%	*	19.3%	19.4%	*	18.0%	16.1%	*	75.0%	97.3%	96.6%
	Caucasian	4.7%	35.6%	29.6%	16.3%	39.8%	41.1%	34.9%	14.8%	17.5%	44.2%	9.8%	11.8%	46	100.0%	96.9%	95.7%
	Hispanic	0.0%	14.7%	13.7%	14.3%	36.9%	38.6%	71.4%	22.8%	23.7%	14.3%	25.6%	24.0%	8	87.5%	94.8%	94.6%
	Multi-Ethnic	*	18.1%	17.4%	*	37.3%	38.4%	*	21.0%	22.2%	*	23.6%	22.0%	*	100.0%	94.9%	95.7%
Low Income	Yes	3.6%	12.7%	11.2%	17.9%	35.4%	34.2%	30.4%	24.0%	25.5%	48.2%	27.8%	29.1%	62	93.5%	93.7%	94.7%
	No	2.5%	33.7%	28.7%	25.0%	39.8%	40.8%	32.5%	15.5%	17.7%	40.0%	10.9%	12.7%	44	95.5%	97.0%	95.5%
Disabled	Yes	0.0%	4.5%	3.1%	7.1%	14.6%	14.9%	28.6%	24.6%	24.7%	64.3%	56.3%	57.3%	14	100.0%	89.2%	89.7%
	No	3.7%	30.4%	25.1%	23.2%	41.5%	41.5%	31.7%	17.2%	19.9%	41.5%	10.9%	13.5%	92	93.5%	97.0%	96.0%
LEP	Yes	0.0%	11.2%	7.2%	25.0%	34.6%	29.9%	33.3%	24.3%	27.3%	41.7%	29.8%	35.6%	14	85.7%	95.5%	95.2%
	No	3.6%	30.4%	25.3%	20.2%	39.2%	40.0%	31.0%	16.9%	19.2%	45.2%	13.5%	15.5%	92	95.7%	96.1%	95.3%
Migrant	Yes	0.0%	15.6%	12.7%	0.0%	36.0%	33.0%	37.5%	23.3%	25.7%	62.5%	25.1%	28.6%	9	88.9%	92.9%	96.0%
	No	3.4%	27.9%	23.3%	22.7%	38.6%	38.9%	30.7%	17.9%	20.1%	43.2%	15.6%	17.7%	97	94.8%	96.1%	95.2%
Gender	Female	3.2%	26.3%	21.8%	19.4%	40.7%	40.0%	32.3%	19.1%	21.2%	45.2%	14.0%	17.0%	34	94.1%	96.3%	95.3%
	Male	3.1%	28.7%	23.4%	21.5%	36.5%	37.1%	30.8%	17.0%	19.7%	44.6%	17.7%	19.8%	72	94.4%	95.8%	95.2%

*The total number of students tested in this category is fewer than 5. Results cannot be reported according to the state's protocol for reporting results.

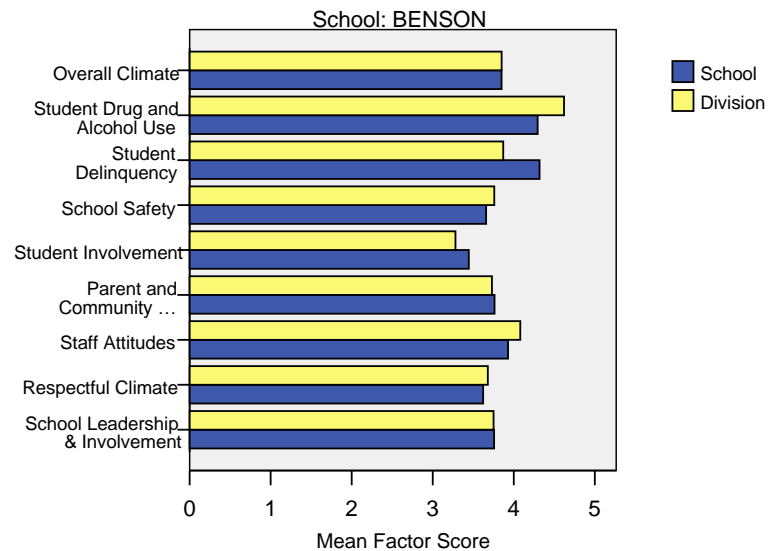
Anchorage School District: Profile of Performance 2005-06

Benson School Climate Survey Results

2006 Student Climate Survey Results



2006 Staff Climate Survey Results



The factors measured in the Student and Staff Climate Survey were:

- **Overall Connectedness – Student Survey:** The Overall Connectedness score for the student survey was computed as an average of three scales: Respectful Climate, Peer Climate, and Caring Adults.
- **Overall Climate – Student Survey:** The Overall Climate score for the student survey was computed as the average of three scales: School Leadership, High Expectations, and School Safety.
- **Overall Climate – Staff Survey:** The Overall Climate score for the staff survey was computed as the average of 6 scales: School Leadership, Respectful Climate, Staff Attitudes, Parent and Community Involvement, Student Involvement, School Safety, Student Delinquency, and Drug and Alcohol Use scores.
- **School Leadership:** Reflects feelings about the decision making of school leaders, fairness of school rules, and student participation in school governance. 1 indicates a low level of school leadership and 5 indicates a high level of school leadership.
- **Respectful Climate:** Fairness of rules and how well students and staff treat one another. 1 indicates a lack of respect and 5 indicates a highly respectful climate.
- **High Expectations:** Expectations of students from peers and adults. 1 indicates a lack of high expectations and 5 indicates very high expectations.
- **School Safety:** Presence of school bullies, gangs and general crime and violence in the community. 1 indicates a low level of safety and 5 indicates a high level of safety.

Anchorage School District: Profile of Performance 2005-06

- **Peer Climate:** Reflects feelings about how respectful and helpful students are to one another. 1 indicates a negative peer climate and 5 indicates a very positive climate.
- **Caring Adults:** Reflects the caring adult relationships students have in the school. 1 indicates a lack of caring relationships and 5 indicates a high number of caring adults.
- **Social & Emotional Learning:** Reflects students' ability to think about the consequences of their actions and to empathize with others. 1 indicates poor social and emotional learning and 5 indicates higher levels of social and emotional learning.
- **Staff Attitudes:** Reflects feelings about competence and attitude towards jobs. 1 indicates more negative attitudes and 5 indicates highly positive attitudes.
- **Parent and Community Involvement:** Accessibility of the school for parents and how connected adults in the community are to the school. 1 indicates a low level of parent and community involvement and 5 indicates a high level of parent and community involvement.
- **Student Involvement:** Reflects feelings about how involved students are in the schools' decision making process. 1 indicates a low level of student involvement and 5 indicates a high level of student involvement.
- **Student Delinquency:** Reflects staff members' reports of witnessed student fights, stealing, and bullying. 1 indicates a high level of delinquency and 5 indicates a low level (5 is most desired).
- **Student Drug and Alcohol Use:** Reflects staff members' reports of observing students under the influence of drugs or alcohol. 1 indicates a high level of drug and alcohol use and 5 indicates a low level (5 is most desired).