

Table 11

Chester Valley School Overview

Statement of Program

Nestled in the heart of a quiet East Anchorage neighborhood, Chester Valley is a pre-kindergarten through 6th grade elementary school serving a diverse student population of approximately 300 students. Originally built in 1964, Chester Valley is one of the school district's older elementary schools, but you wouldn't know it by walking its hallways. Each day is new and filled with academic adventures because students and teachers are excited about learning.

From the Report Card/MLP

SCHOOL GOALS	
Goal	Level of Achievement
READING: Given the DRA (Developmental Reading Assessment) test in the fall, 80% of all identified "non proficient" readers in grades 1-6 will show improvement on spring reading results.	Attained
MATH: Given a grade level PALS or grade level computation test, 80% of students in grades 1-6 will show at least an 80% mastery or 10% increase in spring math scores.	Attained

From the School Report Card

BUDGET*	
2004-2005 Actual Expenditures	\$1,366,381
2005-2006 Revised Budgeted Amount	\$1,465,387
2006-2007 Proposed Budget	\$1,602,439
*Dollars budgeted or expended are general fund only.	

From IFAS

	School	District	Source of Information
Membership	314	50,051	Fall OASIS
Capacity	106%	N/A	Board Report - #189 3/7/06
Attendance Rate	94%	93%	SMS end of year report
Retention Rate	0.0%	1.2%	Report Card File
Transiency Rate	27.64%	22.72%	Report Card File
Economically Disadvantaged	178	16,769	Fall OASIS
Ave. Weekly Volunteer Hours	11	5,032	Report Card File
Students Taking an Alternate Assessment	0	264	SMS
Change in Enrollment	1.7%	0.3%	Report Card File

Anchorage School District: Profile of Performance 2005-2006
 Chester Valley School Characteristics

Teacher Qualification				
# of teachers	% fully licensed	% with advanced degrees	# Nationally Board Certified	% of classes taught by "highly qualified teachers"
22	100%	27%	0	74%

SCHOOL BUSINESS PARTNERSHIPS
Muldoon Fire Station #6

From MLP

ETHNICITY REPORT - OCTOBER 2005						
Caucasian	African American	AK Native/ American Indian	Asian/ Pac. Islander	Hispanic	Multi-Ethnic	Total
107	38	74	37	11	47	314
34.08%	12.10%	23.57%	11.78%	3.50%	14.97%	100.00%

From Fall Oasis

FULL ACADEMIC YEAR (FAY)		
Students Enrolled	Students Enrolled for FAY	Percent FAY
164	157	95.7%

From participation file (3-10 graders)

**Anchorage School District
2005-2006 Adequate Yearly Progress**

Chester Valley Elementary

**AMO For Language Arts: 71.48%
AMO For Math: 57.61%**

Meets AYP

Group	Participation Rate				"FAY"	Language Arts Performance				Math Performance			
	(A) Number Enrolled	(B) Number Tested	Participation Rate (%)	(C) Participation Rate Met		(D) Tested and Enrolled "FAY"	(E) Proficient on LA	(F) Percent Proficient on LA	(G) LA Target	(H) Met AMO for LA	(I) Proficient on Math	(J) Percent Proficient in Math	(K) Math Target
If there are 20 or fewer students enrolled, value is "N/A"													
All Students	164	163	99.4%	Yes	155	130	83.9%	63%	Yes	121	78.1%	48.4%	Yes
African American	22	22	100%	Yes	21	17	81%	48.5%	Yes	14	66.7%	32.5%	Yes
AkNa & Amln	38	38	100%	Yes	34	26	76.5%	53.4%	Yes	24	70.6%	37.9%	Yes
Asian	20	20	N/A	N/A	N/A	N/A	N/A	N/A	N/A	N/A	N/A	N/A	N/A
Caucasian	62	62	100%	Yes	62	54	87.1%	58.1%	Yes	54	87.1%	43%	Yes
Hispanic	<5	<5	N/A	N/A	N/A	N/A	N/A	N/A	N/A	N/A	N/A	N/A	N/A
Multi-Ethnic	18	17	N/A	N/A	N/A	N/A	N/A	N/A	N/A	N/A	N/A	N/A	N/A
Low Income	95	95	100%	Yes	89	75	84.3%	60.3%	Yes	68	76.4%	45.4%	Yes
Disabled	40	40	100%	Yes	N/A	N/A	N/A	N/A	N/A	N/A	N/A	N/A	N/A
LEP	29	29	100%	Yes	N/A	N/A	N/A	N/A	N/A	N/A	N/A	N/A	N/A

Attendance Rate: 94.3% (Threshold is 85%)

N/A is used to indicate when a group does not need to be evaluated when:

(1) 20 or fewer students are enrolled in a group for all groups except "All Students".

(2) 40 or fewer students are enrolled FAY (column D) in the Disabled & LEP groups.

* For the groups where the number enrolled is fewer than or equal to 40, participation is met when no more than 2 miss the test. Groups can also meet this target using the average of the past two or three years.

** Where a group achieves a "Yes" without meeting the listed target, it has done so using either the 99% confidence interval or Safe Harbor.

*** Results cannot be published without releasing personally identifiable information.

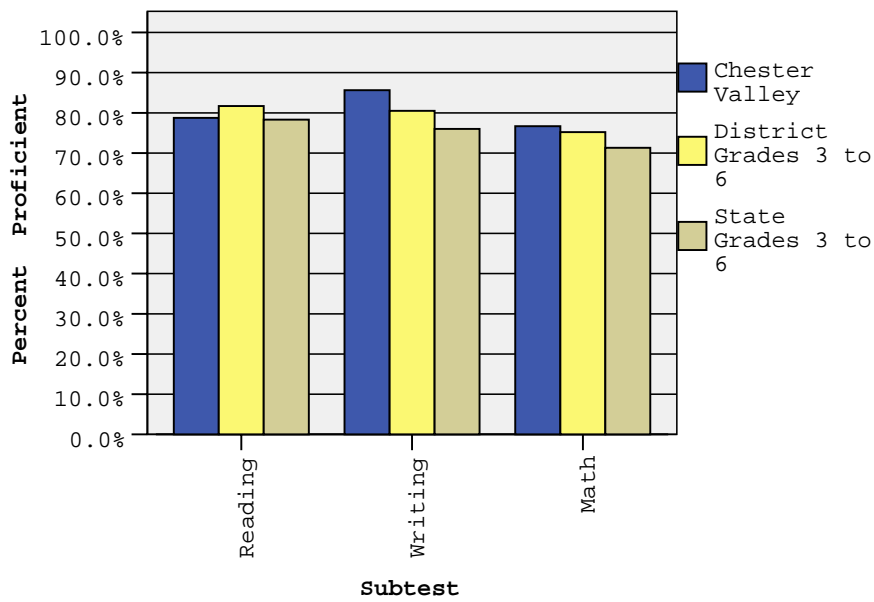
This document was prepared by the ASD Assessment and Evaluation

7/19/2006

Chester Valley Elementary School SBA Proficiency – Spring 2006

	Reading		Writing		Math	
	2005 Proficient	2006 Proficient	2005 Proficient	2006 Proficient	2005 Proficient	2006 Proficient
All Grades	74.4%	78.8%	74.7%	85.6%	68.3%	76.7%
3 rd Grade	63.2%	77.8%	64.9%	83.3%	67.6%	78.4%
4 th Grade	81.1%	75.0%	81.1%	87.5%	65.8%	70.0%
5 th Grade	75.0%	81.4%	82.1%	86.0%	80.0%	79.1%
6 th Grade	77.8%	80.5%	71.1%	85.4%	60.9%	79.1%

SBA Spring 2006 Proficiency Rate Comparison of School, District, and State *



* District and State Grades 3 to 6

Anchorage School District: Profile of Performance 2005-2006

Chester Valley SBA Proficiency by NCLB Groups – Spring 2006

		Reading		Writing		Math	
		Proficient	Not Proficient	Proficient	Not Proficient	Proficient	Not Proficient
Ethnicity	All Students	78.8%	21.3%	85.6%	14.4%	76.7%	23.3%
	African American	77.3%	22.7%	77.3%	22.7%	63.6%	36.4%
	AK Native/ American Indian	68.4%	31.6%	76.3%	23.7%	65.8%	34.2%
	Asian	68.4%	31.6%	84.2%	15.8%	75.0%	25.0%
	Caucasian	88.3%	11.7%	93.3%	6.7%	87.1%	12.9%
	Hispanic	75.0%	25.0%	75.0%	25.0%	50.0%	50.0%
	Multi-Ethnic	82.4%	17.6%	94.1%	5.9%	88.2%	11.8%
LowIncome	Yes	74.7%	25.3%	84.2%	15.8%	73.7%	26.3%
	No	84.6%	15.4%	87.7%	12.3%	80.9%	19.1%
Disabled	Yes	48.7%	51.3%	69.2%	30.8%	52.5%	47.5%
	No	88.4%	11.6%	90.9%	9.1%	84.6%	15.4%
LEP	Yes	74.1%	25.9%	85.2%	14.8%	79.3%	20.7%
	No	79.7%	20.3%	85.7%	14.3%	76.1%	23.9%
Migrant	Yes	71.4%	28.6%	100.0%	0.0%	57.1%	42.9%
	No	79.1%	20.9%	85.0%	15.0%	77.6%	22.4%
Gender	Female	83.3%	16.7%	87.2%	12.8%	78.5%	21.5%
	Male	74.4%	25.6%	84.1%	15.9%	75.0%	25.0%

Anchorage School District: Profile of Performance 2005-2006

Chester Valley SBA Mean Scale Score Comparison: 2004-2005 to 2005-2006

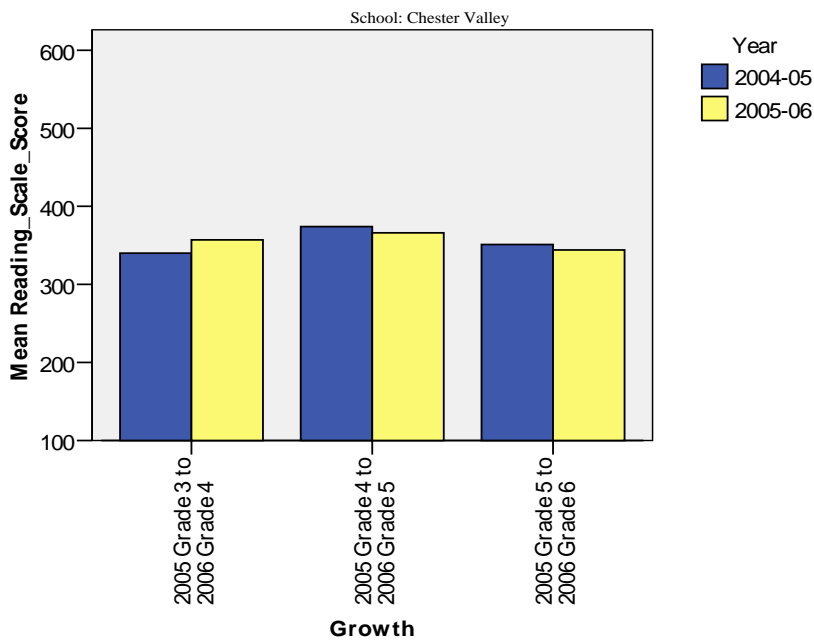
		Reading		Writing		Math	
		2004-2005 Mean Scale Score	2005-2006 Mean Scale Score	2004-2005 Mean Scale Score	2005-2006 Mean Scale Score	2004-2005 Mean Scale Score	2005-2006 Mean Scale Score
Ethnicity	All Students	349.6	356.1	353.6	365.9	343.5	353.8
	African American	341.0	342.0	338.1	356.4	317.6	332.7
	AK Native/ American Indian	321.1	333.2	313.5	339.1	301.1	324.8
	Asian	329.3	332.3	329.5	342.1	331.6	354.4
	Caucasian	374.8	379.8	386.3	389.6	372.1	372.2
	Hispanic	387.0	363.5	394.5	364.0	443.5	343.0
	Multi-Ethnic	320.9	366.5	328.5	381.6	327.0	380.8
Low Income	Yes	325.6	340.7	327.9	352.2	322.6	341.6
	No	372.9	378.6	378.0	385.9	362.7	370.8
Disabled	Yes	284.5	300.5	301.8	320.2	287.4	306.4
	No	363.9	374.0	365.3	380.7	355.8	369.2
LEP	Yes	335.4	347.6	336.0	353.6	337.3	355.4
	No	352.8	357.8	357.4	368.4	345.0	353.4
Migrant	Yes	291.0	337.3	289.8	368.0	285.8	346.1
	No	351.1	356.9	355.3	365.8	345.0	354.1
Gender	Female	361.0	366.2	366.8	377.2	356.0	354.6
	Male	337.8	346.5	339.8	355.1	330.2	353.0

Anchorage School District: Profile of Performance 2005-2006

Chester Valley SBA Growth in Average Scale Score by NCLB Groups: Reading

		Average Scale Score of Students Tested in District Both Years			Average Scale Score of Students Tested in District Both Years			Average Scale Score of Students Tested in District Both Years		
		Grade 3 in 2005	Grade 4 in 2006	Difference	Grade 4 in 2005	Grade 5 in 2006	Difference	Grade 5 in 2005	Grade 6 in 2006	Difference
Ethnicity	All Students	339.7	357.3	17.7	374.0	366.4	-7.6	350.7	344.2	-6.5
	African American	312.1	329.7	17.6	371.8	379.9	8.1	350.7	333.3	-17.4
	AK Native/American Indian	329.4	337.7	8.3	350.2	337.0	-13.2	302.6	328.7	26.1
	Asian	292.9	326.1	33.2	288.3	315.8	27.5	361.4	336.7	-24.7
	Caucasian	391.0	401.4	10.4	375.7	372.2	-3.5	380.9	368.1	-12.8
	Hispanic	369.8	322.9	-46.9	491.7	521.3	29.7	362.0	316.4	-45.7
	Multi-Ethnic	302.2	358.0	55.8	404.1	402.7	-1.4	367.8	368.9	1.1
LowIncome	Yes	314.3	337.8	23.5	383.4	367.7	-15.7	329.2	322.0	-7.2
	No	396.7	400.2	3.5	367.9	365.1	-2.8	379.3	371.8	-7.5
Disabled	Yes	276.7	326.3	49.7	318.0	292.4	-25.7	286.7	285.2	-1.5
	No	363.1	366.7	3.6	386.8	385.9	-0.9	375.7	365.3	-10.4
LEP	Yes	304.4	339.7	35.3	390.2	373.0	-17.2	360.1	340.7	-19.4
	No	344.9	359.1	14.2	372.3	364.8	-7.5	350.4	343.7	-6.7
Migrant	Yes	316.0	331.4	15.4	405.7	444.2	38.5	323.9	326.1	2.2
	No	341.8	358.9	17.1	372.7	365.3	-7.3	352.0	344.4	-7.6
Gender	Female	355.2	373.0	17.8	394.1	387.7	-6.4	358.8	345.9	-12.9
	Male	322.3	336.8	14.5	361.4	350.7	-10.7	343.2	342.0	-1.2

Measure of Growth in SBA Reading for Students Who Tested in 2005 and Again in 2006

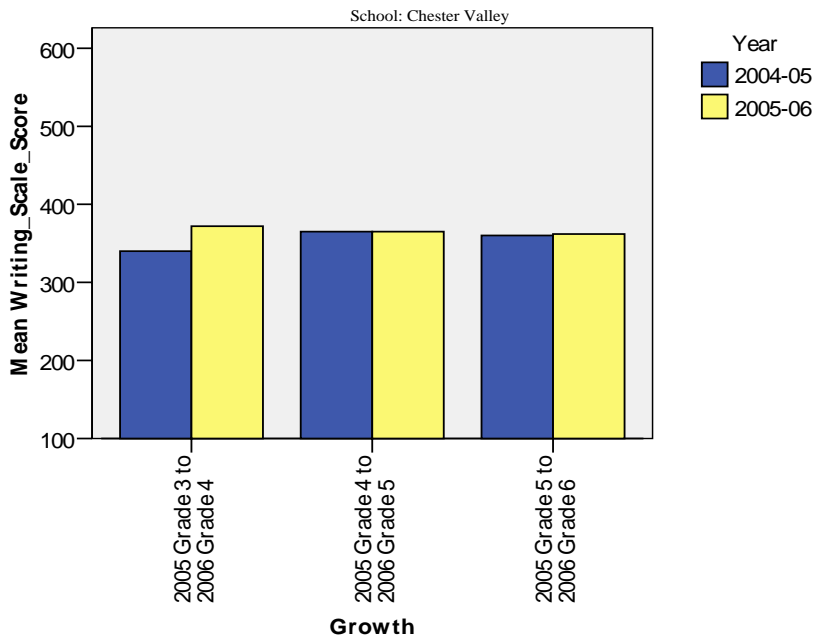


Anchorage School District: Profile of Performance 2005-2006

Chester Valley SBA Growth in Average Scale Score by NCLB Groups: Writing

		Average Scale Score of Students Tested in District Both Years			Average Scale Score of Students Tested in District Both Years			Average Scale Score of Students Tested in District Both Years		
		Grade 3 in 2005	Grade 4 in 2006	Difference	Grade 4 in 2005	Grade 5 in 2006	Difference	Grade 5 in 2005	Grade 6 in 2006	Difference
Ethnicity	All Students	340.0	372.4	32.4	364.7	365.2	0.5	359.9	362.1	2.2
	African American	304.8	333.9	29.1	361.7	400.3	38.7	338.0	338.4	0.4
	AK Native/American Indian	310.2	352.0	41.8	295.1	291.7	-3.4	318.3	357.9	39.6
	Asian	320.3	345.8	25.5	335.4	342.7	7.3	354.2	334.0	-20.2
	Caucasian	402.7	423.2	20.5	371.9	367.1	-4.8	398.3	391.8	-6.5
	Hispanic	328.7	330.3	1.7	493.0	471.4	-21.7	380.7	375.2	-5.5
	Multi-Ethnic	304.1	374.7	70.6	379.8	408.9	29.1	397.7	386.3	-11.4
LowIncome	Yes	313.4	353.7	40.3	380.2	365.0	-15.2	337.1	339.7	2.6
	No	396.9	416.1	19.2	353.3	364.8	11.5	389.4	388.7	-0.7
Disabled	Yes	277.0	337.4	60.4	338.7	300.2	-38.5	315.9	315.1	-0.8
	No	361.8	383.9	22.1	370.7	382.3	11.7	377.0	379.4	2.4
LEP	Yes	323.2	347.0	23.8	395.1	382.7	-12.4	361.8	341.9	-19.9
	No	342.3	375.8	33.5	360.4	360.7	0.3	360.2	366.0	5.8
Migrant	Yes	312.7	360.2	47.5	420.9	388.1	-32.8	226.3	389.8	163.5
	No	341.7	374.3	32.7	363.0	365.4	2.4	362.7	361.2	-1.5
Gender	Female	356.1	384.7	28.6	382.8	386.9	4.1	375.7	378.3	2.7
	Male	320.4	356.7	36.3	352.2	349.0	-3.2	344.1	346.7	2.6

Measure of Growth in SBA Writing for Students Who Tested in 2005 and Again in 2006

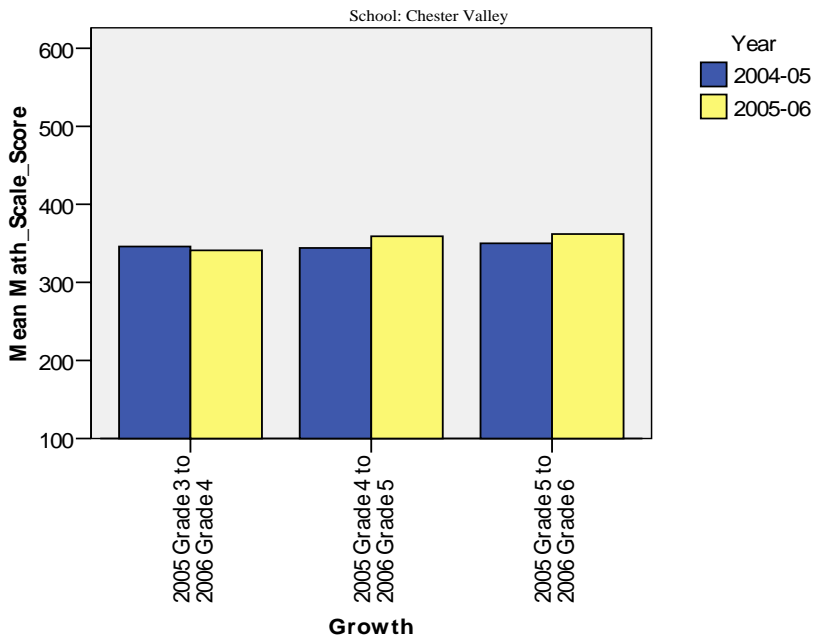


Anchorage School District: Profile of Performance 2005-2006

Chester Valley SBA Growth in Average Scale Score by NCLB Groups: Math

		Average Scale Score of Students Tested in District Both Years			Average Scale Score of Students Tested in District Both Years			Average Scale Score of Students Tested in District Both Years		
		Grade 3 in 2005	Grade 4 in 2006	Difference	Grade 4 in 2005	Grade 5 in 2006	Difference	Grade 5 in 2005	Grade 6 in 2006	Difference
Ethnicity	All Students	346.3	340.8	-5.5	344.4	358.7	14.3	350.2	362.0	11.8
	African American	290.7	266.2	-24.5	331.9	375.1	43.2	327.3	343.8	16.5
	AK Native/American Indian	308.7	332.3	23.7	320.0	310.9	-9.1	324.7	341.2	16.5
	Asian	320.1	323.7	3.6	321.8	386.9	65.1	348.7	351.3	2.7
	Caucasian	424.4	388.7	-35.7	342.2	352.0	9.8	380.1	388.7	8.6
	Hispanic	310.9	292.1	-18.8	582.3	493.8	-88.5	358.4	306.7	-51.7
	Multi-Ethnic	345.0	386.4	41.4	343.7	371.2	27.5	395.9	451.1	55.2
LowIncome	Yes	315.8	317.9	2.1	356.7	372.3	15.7	334.0	345.4	11.4
	No	412.2	394.0	-18.2	334.1	347.7	13.6	368.8	382.9	14.1
Disabled	Yes	296.3	316.8	20.5	316.4	297.7	-18.7	301.2	300.0	-1.2
	No	363.7	349.2	-14.5	350.9	375.1	24.2	367.3	383.8	16.5
LEP	Yes	325.7	343.3	17.7	374.0	401.4	27.4	350.7	337.2	-13.5
	No	349.1	340.7	-8.4	338.8	350.9	12.1	348.7	369.3	20.7
Migrant	Yes	303.4	331.7	28.3	410.2	522.0	111.8	238.1	283.7	45.6
	No	349.9	342.1	-7.8	343.3	354.8	11.5	352.4	363.7	11.3
Gender	Female	356.0	341.4	-14.7	356.7	368.2	11.5	363.9	370.1	6.2
	Male	333.8	340.9	7.1	335.7	353.3	17.7	336.0	356.4	20.4

Measure of Growth in SBA Math for Students Who Tested in 2005 and Again in 2006



Anchorage School District: Profile of Performance 2005-2006

Chester Valley Grades 3-6 SBA Results Compared with District and State: Reading

Reading		% Advanced			% Proficient			% Below Proficient			% Far Below Proficient			Total Students Tested	Percent Tested		
		School	District	State	School	District	State	School	District	State	School	District	State	School	School	District	State
Ethnicity	All Students	25.0%	34.6%	31.2%	53.8%	47.1%	47.1%	14.4%	12.0%	14.1%	6.9%	6.3%	7.7%	164	99.4%	98.1%	98.1%
	African American	18.2%	20.7%	21.4%	59.1%	51.1%	52.9%	18.2%	18.9%	17.1%	4.5%	9.4%	8.6%	22	100.0%	98.2%	98.5%
	AK Native/ American Indian	10.5%	19.3%	12.4%	57.9%	49.7%	45.5%	18.4%	19.1%	25.7%	13.2%	11.9%	16.4%	38	100.0%	97.5%	97.7%
	Asian	15.8%	24.7%	27.4%	52.6%	49.6%	50.7%	15.8%	16.3%	14.8%	15.8%	9.4%	7.0%	20	100.0%	97.1%	97.5%
	Caucasian	38.3%	44.8%	41.6%	50.0%	44.3%	46.3%	8.3%	7.4%	8.2%	3.3%	3.5%	3.8%	62	100.0%	98.5%	98.3%
	Hispanic	*	22.4%	22.4%	*	51.8%	53.0%	*	17.3%	17.3%	*	8.5%	7.3%	*	100.0%	97.0%	97.2%
	Multi-Ethnic	29.4%	27.4%	28.2%	52.9%	50.5%	50.5%	17.6%	14.8%	13.9%	0.0%	7.4%	7.3%	18	94.4%	98.5%	98.7%
Low Income	Yes	17.9%	18.7%	17.4%	56.8%	51.0%	48.4%	15.8%	19.4%	21.3%	9.5%	11.0%	12.9%	95	100.0%	97.6%	97.9%
	No	35.4%	45.1%	41.4%	49.2%	44.5%	46.1%	12.3%	7.2%	8.6%	3.1%	3.3%	3.8%	69	98.6%	98.4%	98.2%
Disabled	Yes	5.1%	8.8%	8.1%	43.6%	36.7%	35.2%	33.3%	28.5%	29.9%	17.9%	26.1%	26.8%	40	100.0%	93.7%	94.0%
	No	31.4%	39.1%	34.9%	57.0%	48.9%	49.1%	8.3%	9.1%	11.4%	3.3%	2.9%	4.5%	124	99.2%	98.9%	98.8%
LEP	Yes	18.5%	15.1%	9.0%	55.6%	52.1%	43.7%	14.8%	20.5%	28.6%	11.1%	12.4%	18.7%	29	100.0%	96.7%	97.3%
	No	26.3%	38.3%	35.5%	53.4%	46.1%	47.8%	14.3%	10.4%	11.2%	6.0%	5.2%	5.6%	135	99.3%	98.3%	98.2%
Migrant	Yes	14.3%	20.0%	13.0%	57.1%	53.7%	44.6%	14.3%	17.1%	25.2%	14.3%	9.2%	17.2%	7	100.0%	99.4%	98.1%
	No	25.5%	35.1%	32.3%	53.6%	46.9%	47.3%	14.4%	11.8%	13.3%	6.5%	6.2%	7.1%	157	99.4%	98.0%	98.1%
Gender	Female	28.2%	39.3%	34.9%	55.1%	46.2%	47.0%	12.8%	10.0%	12.3%	3.8%	4.5%	5.8%	80	98.8%	98.5%	98.4%
	Male	22.0%	30.0%	27.5%	52.4%	47.9%	47.2%	15.9%	13.9%	15.7%	9.8%	8.1%	9.5%	84	100.0%	97.7%	97.7%

*The total number of students tested in this category is fewer than 5. Results cannot be reported according to the state's protocol for reporting results.

Anchorage School District: Profile of Performance 2005-2006

Chester Valley Grades 3-6 SBA Results Compared with District and State: Writing

Writing		% Advanced			% Proficient			% Below Proficient			% Far Below Proficient			Total Students Tested	Percent Tested		
		School	District	State	School	District	State	School	District	State	School	District	State	School	School	District	State
Ethnicity	All Students	26.9%	31.4%	27.4%	58.8%	49.1%	48.6%	14.4%	18.0%	21.9%	0.0%	1.6%	2.1%	164	99.4%	98.1%	98.1%
	African American	22.7%	18.0%	18.8%	54.5%	50.7%	52.0%	22.7%	29.2%	27.3%	0.0%	2.1%	1.9%	22	100.0%	98.2%	98.3%
	AK Native/ American Indian	15.8%	15.5%	10.5%	60.5%	52.5%	45.2%	23.7%	28.7%	39.6%	0.0%	3.2%	4.7%	38	100.0%	97.5%	97.9%
	Asian	5.3%	25.7%	27.6%	78.9%	49.8%	51.0%	15.8%	21.9%	19.3%	0.0%	2.6%	2.0%	20	100.0%	97.0%	97.5%
	Caucasian	38.3%	40.5%	36.3%	55.0%	47.1%	49.0%	6.7%	11.6%	13.7%	0.0%	0.8%	1.0%	62	100.0%	98.5%	98.2%
	Hispanic	*	20.9%	20.2%	*	52.7%	55.2%	*	24.5%	23.1%	*	1.8%	1.5%	*	100.0%	97.0%	97.2%
	Multi-Ethnic	41.2%	25.2%	25.6%	52.9%	51.2%	51.5%	5.9%	21.8%	21.0%	0.0%	1.9%	1.9%	18	94.4%	98.5%	98.6%
Low Income	Yes	16.8%	16.4%	15.3%	67.4%	52.2%	48.7%	15.8%	28.5%	32.4%	0.0%	2.9%	3.6%	95	100.0%	97.6%	98.0%
	No	41.5%	41.3%	36.5%	46.2%	47.0%	48.6%	12.3%	11.1%	13.9%	0.0%	0.7%	0.9%	69	98.6%	98.4%	98.1%
Disabled	Yes	5.1%	7.7%	6.4%	64.1%	40.2%	38.5%	30.8%	45.6%	47.9%	0.0%	6.5%	7.2%	40	100.0%	93.8%	94.2%
	No	33.9%	35.5%	30.9%	57.0%	50.6%	50.3%	9.1%	13.1%	17.6%	0.0%	0.7%	1.2%	124	99.2%	98.9%	98.7%
LEP	Yes	11.1%	14.9%	9.1%	74.1%	53.9%	45.1%	14.8%	28.3%	41.0%	0.0%	2.9%	4.8%	29	100.0%	96.6%	97.5%
	No	30.1%	34.6%	31.0%	55.6%	48.1%	49.3%	14.3%	16.0%	18.1%	0.0%	1.3%	1.5%	135	99.3%	98.3%	98.2%
Migrant	Yes	14.3%	20.2%	12.2%	85.7%	50.6%	43.4%	0.0%	26.5%	39.8%	0.0%	2.7%	4.5%	7	100.0%	99.4%	98.3%
	No	27.5%	31.8%	28.4%	57.5%	49.0%	49.0%	15.0%	17.7%	20.7%	0.0%	1.5%	1.9%	157	99.4%	98.0%	98.1%
Gender	Female	32.1%	37.8%	33.4%	55.1%	47.8%	47.9%	12.8%	13.5%	17.4%	0.0%	1.0%	1.3%	80	98.8%	98.4%	98.4%
	Male	22.0%	25.2%	21.7%	62.2%	50.3%	49.3%	15.9%	22.3%	26.2%	0.0%	2.2%	2.8%	84	100.0%	97.7%	97.7%

*The total number of students tested in this category is fewer than 5. Results cannot be reported according to the state's protocol for reporting results.

Anchorage School District: Profile of Performance 2005-2006

Chester Valley Grades 3-6 SBA Results Compared with District and State: Math

Math		% Advanced			% Proficient			% Below Proficient			% Far Below Proficient			Total Students Tested	Percent Tested		
		School	District	State	School	District	State	School	District	State	School	District	State	School	School	District	State
Ethnicity	All Students	36.2%	38.3%	32.9%	40.5%	37.0%	38.4%	16.0%	13.1%	14.7%	7.4%	11.7%	14.0%	164	99.4%	98.4%	98.2%
	African American	27.3%	19.2%	19.7%	36.4%	39.8%	40.5%	13.6%	18.2%	19.7%	22.7%	22.9%	20.0%	22	100.0%	98.2%	98.5%
	AK Native/ American Indian	21.1%	24.5%	16.3%	44.7%	40.1%	37.1%	21.1%	17.2%	21.4%	13.2%	18.1%	25.2%	38	100.0%	97.4%	97.7%
	Asian	35.0%	33.8%	35.2%	40.0%	37.3%	39.0%	25.0%	13.7%	13.5%	0.0%	15.2%	12.4%	20	100.0%	98.6%	98.8%
	Caucasian	45.2%	47.7%	41.6%	41.9%	35.1%	38.5%	9.7%	10.3%	11.2%	3.2%	6.9%	8.6%	62	100.0%	98.5%	98.3%
	Hispanic	*	27.2%	26.4%	*	39.1%	40.9%	*	19.3%	18.3%	*	14.5%	14.4%	*	100.0%	99.0%	98.7%
	Multi-Ethnic	52.9%	31.5%	32.1%	35.3%	39.6%	39.6%	11.8%	13.9%	13.6%	0.0%	15.0%	14.7%	18	94.4%	98.7%	98.8%
Low Income	Yes	28.4%	23.2%	20.5%	45.3%	39.3%	38.6%	18.9%	18.1%	19.3%	7.4%	19.4%	21.6%	95	100.0%	98.1%	98.1%
	No	47.1%	48.3%	42.1%	33.8%	35.4%	38.3%	11.8%	9.7%	11.2%	7.4%	6.6%	8.4%	69	98.6%	98.6%	98.3%
Disabled	Yes	10.0%	12.7%	11.0%	42.5%	29.6%	28.7%	27.5%	22.4%	22.6%	20.0%	35.3%	37.7%	40	100.0%	93.7%	94.1%
	No	44.7%	42.7%	36.5%	39.8%	38.2%	40.0%	12.2%	11.4%	13.4%	3.3%	7.6%	10.1%	124	99.2%	99.3%	98.9%
LEP	Yes	34.5%	23.6%	14.7%	44.8%	38.5%	35.1%	20.7%	18.1%	22.4%	0.0%	19.8%	27.8%	29	100.0%	98.8%	98.3%
	No	36.6%	41.2%	36.5%	39.6%	36.7%	39.1%	14.9%	12.1%	13.1%	9.0%	10.1%	11.3%	135	99.3%	98.3%	98.2%
Migrant	Yes	28.6%	25.7%	18.7%	28.6%	38.4%	35.1%	28.6%	17.6%	20.1%	14.3%	18.4%	26.1%	7	100.0%	99.4%	98.1%
	No	36.5%	38.7%	33.8%	41.0%	36.9%	38.7%	15.4%	12.9%	14.3%	7.1%	11.4%	13.2%	157	99.4%	98.4%	98.2%
Gender	Female	34.2%	38.1%	33.0%	44.3%	37.8%	39.2%	12.7%	13.3%	14.8%	8.9%	10.9%	13.1%	80	98.8%	98.7%	98.5%
	Male	38.1%	38.5%	32.8%	36.9%	36.2%	37.7%	19.0%	12.9%	14.6%	6.0%	12.5%	14.9%	84	100.0%	98.1%	97.9%

*The total number of students tested in this category is fewer than 5. Results cannot be reported according to the state's protocol for reporting results.

Anchorage School District: Profile of Performance 2005-2006

Chester Valley TerraNova 5th grade

Percent in each quartile

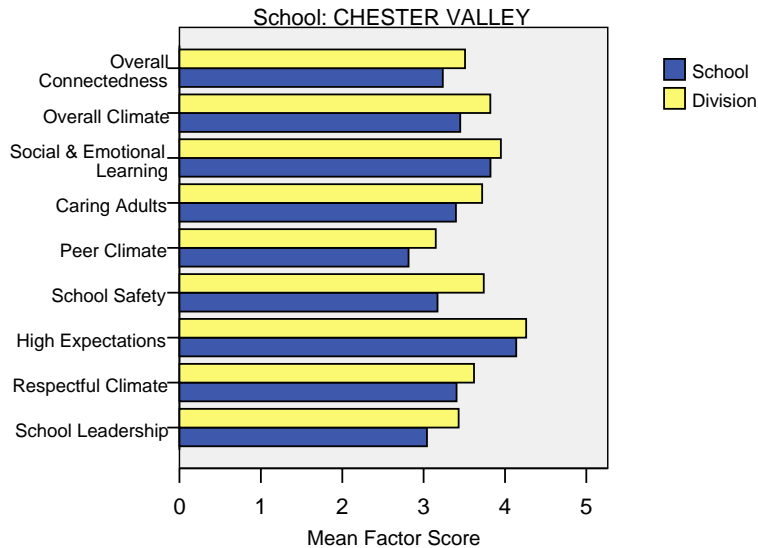
Reading	Above Average		Average				Below Average	
	4th Quartile (76-99 percentile)		3rd Quartile (51-75 percentile)		2nd Quartile (26-50 percentile)		1st Quartile (1-25 percentile)	
	School	District	School	District	School	District	School	District
2005-2006	24.4%	30.4%	26.7%	26.8%	28.9%	24.5%	20.0%	18.3%
2004-2005	14.6%	29.2%	24.4%	27.6%	39.0%	24.5%	22.0%	18.7%
2003-2004	20.0%	30.6%	43.3%	26.9%	13.3%	24.2%	23.3%	18.3%
2002-2003	17.9%	29.1%	41.0%	26.6%	28.2%	23.8%	12.8%	20.5%
2001-2002	26.9%	30.3%	26.9%	26.0%	26.9%	24.6%	19.2%	19.0%

Language	Above Average		Average				Below Average	
	4th Quartile (76-99 percentile)		3rd Quartile (51-75 percentile)		2nd Quartile (26-50 percentile)		1st Quartile (1-25 percentile)	
	School	District	School	District	School	District	School	District
2005-2006	35.6%	34.0%	24.4%	26.5%	22.2%	22.0%	17.8%	17.5%
2004-2005	22.0%	32.1%	22.0%	28.3%	36.6%	21.2%	19.5%	18.4%
2003-2004	30.0%	34.1%	33.3%	26.5%	20.0%	21.7%	16.7%	17.7%
2002-2003	20.5%	32.8%	43.6%	26.5%	20.5%	20.9%	15.4%	19.8%
2001-2002	32.7%	32.3%	32.7%	26.4%	13.5%	22.9%	21.2%	18.4%

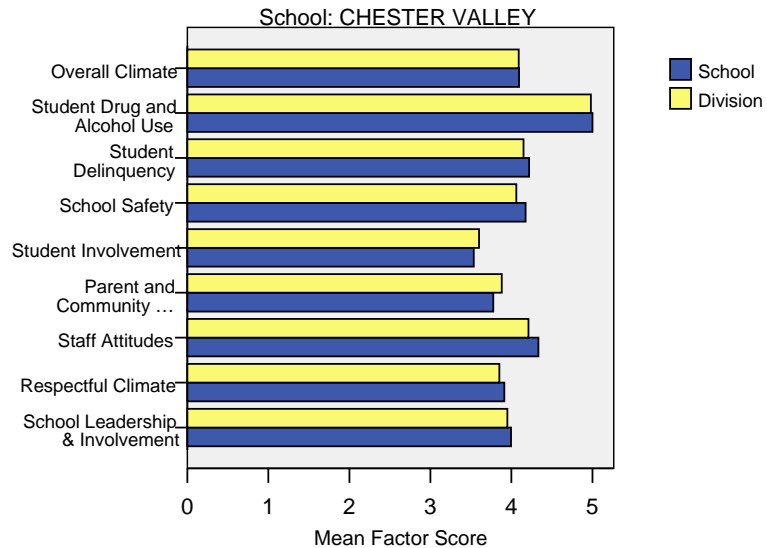
Math	Above Average		Average				Below Average	
	4th Quartile (76-99 percentile)		3rd Quartile (51-75 percentile)		2nd Quartile (26-50 percentile)		1st Quartile (1-25 percentile)	
	School	District	School	District	School	District	School	District
2005-2006	24.4%	28.4%	35.6%	31.9%	22.2%	22.3%	17.8%	17.5%
2004-2005	17.1%	26.9%	41.5%	31.1%	19.5%	22.9%	22.0%	19.1%
2003-2004	23.3%	28.3%	36.7%	29.3%	20.0%	22.6%	20.0%	19.8%
2002-2003	7.7%	24.7%	59.0%	30.6%	15.4%	22.6%	17.9%	22.1%
2001-2002	25.0%	24.1%	25.0%	30.1%	30.8%	24.8%	19.2%	20.9%

Chester Valley School Climate Survey Results

2006 Student Climate Survey Results



2006 Staff Climate Survey Results



The factors measured in the Student and Staff Climate Survey were:

- **Overall Connectedness – Student Survey:** The Overall Connectedness score for the student survey was computed as an average of three scales: Respectful Climate, Peer Climate, and Caring Adults.
- **Overall Climate – Student Survey:** The Overall Climate score for the student survey was computed as the average of three scales: School Leadership, High Expectations, and School Safety.
- **Overall Climate – Staff Survey:** The Overall Climate score for the staff survey was computed as the average of 6 scales: School Leadership, Respectful Climate, Staff Attitudes, Parent and Community Involvement, Student Involvement, School Safety, Student Delinquency, and Drug and Alcohol Use scores.
- **School Leadership:** Reflects feelings about the decision making of school leaders, fairness of school rules, and student participation in school governance. 1 indicates a low level of school leadership and 5 indicates a high level of school leadership.
- **Respectful Climate:** Fairness of rules and how well students and staff treat one another. 1 indicates a lack of respect and 5 indicates a highly respectful climate.
- **High Expectations:** Expectations of students from peers and adults. 1 indicates a lack of high expectations and 5 indicates very high expectations.

- **School Safety:** Presence of school bullies, gangs and general crime and violence in the community. 1 indicates a low level of safety and 5 indicates a high level of safety.
- **Peer Climate:** Reflects feelings about how respectful and helpful students are to one another. 1 indicates a negative peer climate and 5 indicates a very positive climate.
- **Caring Adults:** Reflects the caring adult relationships students have in the school. 1 indicates a lack of caring relationships and 5 indicates a high number of caring adults.
- **Social & Emotional Learning:** Reflects students' ability to think about the consequences of their actions and to empathize with others. 1 indicates poor social and emotional learning and 5 indicates higher levels of social and emotional learning.
- **Staff Attitudes:** Reflects feelings about competence and attitude towards jobs. 1 indicates more negative attitudes and 5 indicates highly positive attitudes.
- **Parent and Community Involvement:** Accessibility of the school for parents and how connected adults in the community are to the school. 1 indicates a low level of parent and community involvement and 5 indicates a high level of parent and community involvement.
- **Student Involvement:** Reflects feelings about how involved students are in the schools' decision making process. 1 indicates a low level of student involvement and 5 indicates a high level of student involvement.
- **Student Delinquency:** Reflects staff members' reports of witnessed student fights, stealing, and bullying. 1 indicates a high level of delinquency and 5 indicates a low level (5 is most desired).
- **Student Drug and Alcohol Use:** Reflects staff members' reports of observing students under the influence of drugs or alcohol. 1 indicates a high level of drug and alcohol use and 5 indicates a low level (5 is most desired).