

Table 72

Chugiak High School Overview

Statement of Program

The faculty of Chugiak High School and members of the surrounding community recognize the need for academic skills and knowledge and seek to promote an environment that will continue to develop curiosity, creativity, motivation, self-discipline, and confidence building. We meet the needs of a wide range of learning styles, provide for and encourage individual cooperation and responsibility for one's own actions. We recognize that each person's life experience makes his or her education unique. We recognize opportunities for learning about each day. Our faculty is diversified in their instructional methods to allow for the individual learning styles of our students. We provide a spectrum of academic courses and other opportunities to learn, including arts, community services, peer assistance, sports and other activities. We expect our students to become capable and contributing people, able to adapt to an ever-changing society and world.

From the Report Card/MLP

SCHOOL GOALS	
Goal	Level of Achievement
Teachers will strive to challenge all students academically. Results will be measured by using the Standards Based Assessments; each subgroup in each academic area will decrease by 10% the number of students not proficient.	Partially Attained
Teachers will make contact with 100% of their students' parents/guardians during the first and third quarters of each school year.	Partially Attained
Chugiak High School will have 100% of students participate in a school-sponsored activity.	Partially Attained

From the Report Card/MLP

BUDGET*	
2004-2005 Actual Expenditures	\$9,251,132
2004-06 Revised Budgeted Amount	\$7,681,297
2006-07 Proposed Budget	\$8,621,951

*Dollars budgeted or expended are general fund only.

From IFAS

Anchorage School District: Profile of Performance 2005-06
Chugiak High School Characteristics

	School	District	Source of Information
Membership	1,510	50,051	Fall OASIS
Capacity	82%	N/A	Board Report - #189 3/7/06
Attendance Rate	94%	93%	SMS end of year report
Transiency Rate	13.59%	22.72%	Report Card File
Economically Disadvantaged	102	16,769	Fall OASIS
Ave. Weekly Volunteer Hours	90	5,032	Report Card File
Graduation Rate	83.5%	63.91%	Cohort group rate – NCLB formula
Dropout Rate	3.13%	5.78%	OASIS end of year report
AP courses offered in 2005-2006	15	25	SMS transcript file
Students successfully completing AP courses	170	1,386	SMS transcript file
AP courses completed by students	334	2,524	SMS transcript file
Students Taking an Alternate Assessment	18	264	SMS
Students Taking a HSGQE Alternative Assessment	16	270	SMS
Change in Enrollment	-25.8%	0.3%	Report Card File

Teacher Qualification				
# of teachers	% fully licensed	% with advanced degrees	# Nationally Board Certified	% of classes taught by "highly qualified teachers"
80	100%	50%	0	87%

SCHOOL BUSINESS PARTNERSHIPS	
Aeromap U.S. ASVAB Big Brothers Big Sisters Boy Scouts of America/Learning for Life Eagle River Carrs-Safeway Eagle River Rotary Eagle River Wal-Mart Fort Richardson Child and Youth Services Junior Achievement KMBQ	Matanuska Electric Native Village of Eklutna Providence Health Systems & Esther Petrie To Russia With Love Program Opsie Daisy Matanuska Valley Federal Credit Union Nordstrom Sears Sun Moon Massage The UPS Store of Eagle River

From MLP

ACCREDITATION		
Initial Accreditation	Name of Accrediting Organization	Level of Accreditation
1964	Northwest Association of Accredited Schools	Full

Chugiak High School Characteristics

ETHNICITY REPORT - OCTOBER 2005						
Caucasian	African American	AK Native/ American Indian	Asian/ Pac. Islander	Hispanic	Multi-Ethnic	Total
1249	34	107	44	42	34	1510
82.72%	2.25%	7.09%	2.91%	2.78%	2.25%	100.00%

From Fall Oasis

TOTAL DROPOUT RATES							
Data Type	AK Native/ American Indian	Asian/ Pac. Islander	African American	Hispanic	Caucasian	Multi-Ethnic	Total
Enrollment	113	45	38	44	1,289	36	1,565
Final Dropouts	9	1	2	1	32	4	49
% of Dropouts	7.96%	2.22%	5.26%	2.27%	2.48%	11.11%	3.13%

From Summer Oasis

FULL ACADEMIC YEAR (FAY)		
Students Enrolled	Students Enrolled for FAY	Percent FAY
724	681	94.1%

From participation file (3-10 graders)

Test	Students/Subject	SAT/ACT				
		2001-2002	2002-2003	2003-2004	2004-2005	2005-2006
	No. Graduates	399	388	407	402	325
SAT	Percent Tested	70%	68%	67%	65%	80%
	Critical Reading*	524	523	529	539	533
	Math	540	534	536	554	543
	Writing					504
ACT	Percent Tested	34%	36%	33%	31%	37%
	English	22.1	21.9	22.2	23.7	22.8
	Math	24.8	24.3	23.8	25.3	24.1

*Reported as Verbal Score prior to 2005-2006

**Anchorage School District
2005-2006 Adequate Yearly Progress**

Chugiak High School

**AMO For Language Arts: 71.48%
AMO For Math: 57.61%**

**Does Not Meet AYP
Level 2**

Group	Participation Rate				"FAY"	Language Arts Performance				Math Performance			
	(A) Number Enrolled	(B) Number Tested	Participation Rate (%)	(C) Participation Rate Met	(D) Tested and Enrolled "FAY"	(E) Proficient on LA	(F) Percent Proficient on LA	(G) LA Target	(H) Met AMO for LA	(I) Proficient on Math	(J) Percent Proficient in Math	(K) Math Target	(L) Met AMO for Math
All Students	724	714	98.6%	Yes	675	592	87.7%	67.4%	Yes	491	72.7%	53.2%	Yes
African American	13	13	N/A	N/A	N/A	N/A	N/A	N/A	N/A	N/A	N/A	N/A	N/A
AkNa & Amln	55	55	100%	Yes	48	34	70.8%	56.3%	Yes	30	62.5%	41%	Yes
Asian	21	20	95.2%	Yes	N/A	N/A	N/A	N/A	N/A	N/A	N/A	N/A	N/A
Caucasian	599	592	98.8%	Yes	565	507	89.7%	67.1%	Yes	421	74.5%	52.8%	Yes
Hispanic	19	18	N/A	N/A	N/A	N/A	N/A	N/A	N/A	N/A	N/A	N/A	N/A
Multi-Ethnic	17	16	N/A	N/A	N/A	N/A	N/A	N/A	N/A	N/A	N/A	N/A	N/A
Low Income	62	61	98.4%	Yes	52	40	76.9%	56.9%	Yes	27	51.9%	41.6%	Yes
Disabled	79	76	96.2%	Yes	72	34	47.2%	59.1%	No	19	26.4%	44%	No
LEP	14	14	N/A	N/A	N/A	N/A	N/A	N/A	N/A	N/A	N/A	N/A	N/A

Graduation Rate: 83.5% (Threshold is 55.58%)

N/A is used to indicate when a group does not need to be evaluated when:

- (1) 20 or fewer students are enrolled in a group for all groups except "All Students".
- (2) 40 or fewer students are enrolled FAY (column D) in the Disabled & LEP groups.

* For the groups where the number enrolled is fewer than or equal to 40, participation is met when no more than 2 miss the test. Groups can also meet this target using the average of the past two or three years.

** Where a group achieves a "Yes" without meeting the listed target, it has done so using either the 99% confidence interval or Safe Harbor.

*** Results cannot be published without releasing personally identifiable information.

This document was prepared by the ASD Assessment and Evaluation 7/19/2006

Anchorage School District: Profile of Performance 2005-06

Chugiak HSGQE - 10th Grade Results

Reading	Proficient		Not Proficient	
	School	District	School	District
2005-2006	86.0%	76.4%	14.0%	23.6%
2004-2005	84.0%	72.5%	16.1%	27.5%
2003-2004	83.0%	73.3%	17.0%	26.7%
2002-2003	81.7%	72.8%	18.3%	27.1%

Writing	Proficient		Not Proficient	
	School	District	School	District
2005-2006	96.3%	90.8%	3.7%	9.2%
2004-2005	93.9%	85.6%	6.1%	14.4%
2003-2004	92.6%	87.0%	7.4%	13.0%
2002-2003	92.0%	85.4%	8.1%	14.6%

Math	Proficient		Not Proficient	
	School	District	School	District
2005-2006	89.7%	79.9%	10.3%	20.1%
2004-2005	84.7%	76.3%	15.3%	14.4%
2003-2004	81.5%	69.8%	18.6%	30.2%
2002-2003	82.1%	74.3%	18.0%	25.7%

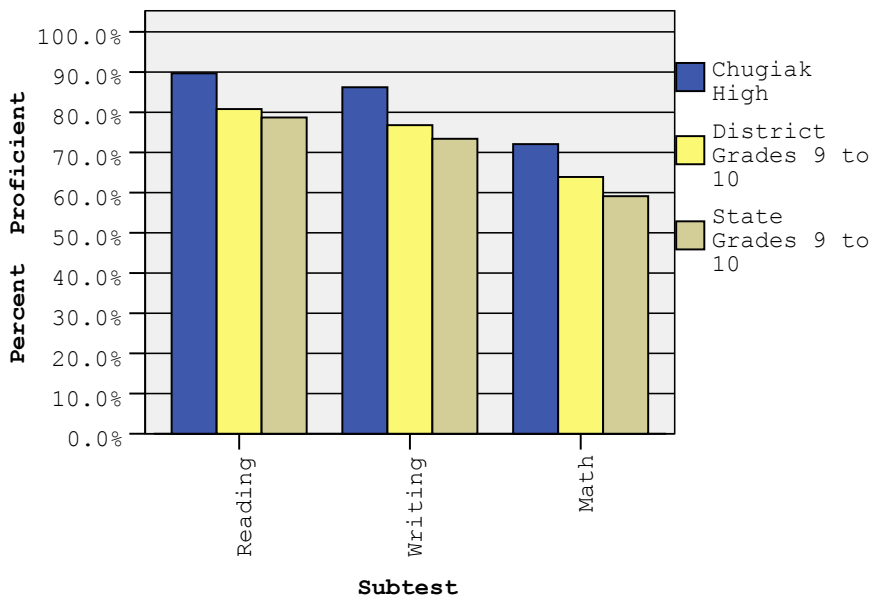
Chugiak High HSGQE Scores Spring 2006

Students	Proficient		Not Proficient	
	Number	Percent	Number	Percent
Grade 10				
Reading	301	86.0%	49	14.0%
Writing	338	96.3%	13	3.7%
Math	314	89.7%	36	10.3%

Chugiak High School SBA Proficiency – Spring 2006

	Reading		Writing		Math	
	2005 Proficient	2006 Proficient	2005 Proficient	2006 Proficient	2005 Proficient	2006 Proficient
All Grades	90.9%	89.7%	85.2%	86.2%	74.6%	72.1%
9th Grade	90.9%	87.9%	85.2%	85.5%	74.6%	68.1%
10th Grade	N/A	91.4%	N/A	86.9%	N/A	76.0%

SBA Spring 2006 Proficiency Rate Comparison of School, District, and State *



* District and State Grades 9 to 10

Anchorage School District: Profile of Performance 2005-06

Chugiak High SBA Proficiency by NCLB Groups – Spring 2006

		Reading		Writing		Math	
		Proficient	Not Proficient	Proficient	Not Proficient	Proficient	Not Proficient
Ethnicity	All Students	89.7%	10.3%	86.2%	13.8%	72.1%	27.9%
	African American	75.0%	25.0%	69.2%	30.8%	53.8%	46.2%
	AK Native/ American Indian	75.9%	24.1%	74.1%	25.9%	63.0%	37.0%
	Asian	94.7%	5.3%	89.5%	10.5%	80.0%	20.0%
	Caucasian	91.7%	8.3%	88.0%	12.0%	73.7%	26.3%
	Hispanic	82.4%	17.6%	83.3%	16.7%	55.6%	44.4%
	Multi-Ethnic	75.0%	25.0%	75.0%	25.0%	68.8%	31.3%
Low Income	Yes	79.3%	20.7%	77.2%	22.8%	52.5%	47.5%
	No	90.6%	9.4%	87.0%	13.0%	73.9%	26.1%
Disabled	Yes	50.0%	50.0%	30.8%	69.2%	16.9%	83.1%
	No	93.7%	6.3%	91.9%	8.1%	77.7%	22.3%
LEP	Yes	61.5%	38.5%	69.2%	30.8%	42.9%	57.1%
	No	90.2%	9.8%	86.5%	13.5%	72.7%	27.3%
Migrant	Yes	73.3%	26.7%	76.9%	23.1%	53.3%	46.7%
	No	90.0%	10.0%	86.4%	13.6%	72.5%	27.5%
Gender	Female	90.9%	9.1%	92.1%	7.9%	72.3%	27.7%
	Male	88.5%	11.5%	80.9%	19.1%	71.8%	28.2%

Anchorage School District: Profile of Performance 2005-06

Chugiak High SBA Mean Scale Score Comparison: 2004-2005 to 2005-2006

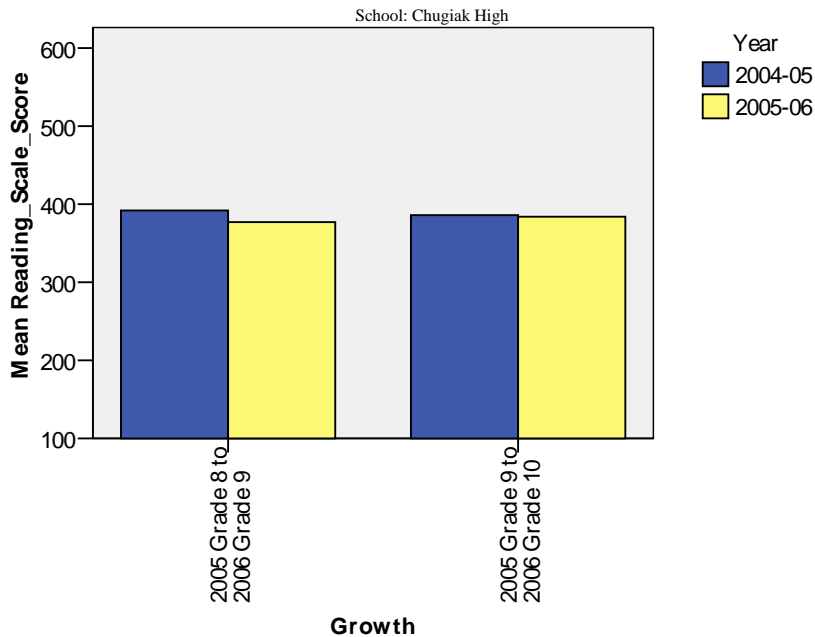
		Reading		Writing		Math	
		2004-2005 Mean Scale Score	2005-2006 Mean Scale Score	2004-2005 Mean Scale Score	2005-2006 Mean Scale Score	2004-2005 Mean Scale Score	2005-2006 Mean Scale Score
Ethnicity	All Students	383.8	376.6	366.6	367.4	345.5	330.9
	African American	311.7	322.2	321.1	315.4	275.9	281.0
	AK Native/ American Indian						
	Asian	388.0	402.7	397.3	352.4	394.2	323.7
	Caucasian	389.3	380.8	372.2	371.1	349.3	334.4
	Hispanic	378.2	345.2	356.1	347.5	321.8	313.9
	Multi-Ethnic	385.3	368.7	355.6	369.1	344.5	308.4
Low Income	Yes	330.0	344.9	309.4	345.1	288.8	297.9
	No	387.1	380.2	369.9	369.9	349.0	334.7
Disabled	Yes	309.7	294.5	293.6	278.9	266.5	268.7
	No	392.8	385.5	375.4	377.0	355.0	337.6
LEP	Yes	334.0	322.8	319.0	324.0	349.0	296.4
	No	384.1	378.2	366.9	368.6	345.5	332.0
Migrant	Yes	339.9	334.2	322.1	354.0	308.8	295.8
	No	384.7	377.9	367.5	367.7	346.2	331.9
Gender	Female	389.3	380.9	380.9	381.6	344.5	329.5
	Male	379.1	372.3	354.4	353.3	346.3	332.3

Anchorage School District: Profile of Performance 2005-06

Chugiak High SBA Growth in Average Scale Score by NCLB Groups: Reading

		Average Scale Score of Students Tested in District Both Years			Average Scale Score of Students Tested in District Both Years		
		Grade 8 in 2005	Grade 9 in 2006	Difference	Grade 9 in 2005	Grade 10 in 2006	Difference
Ethnicity	All Students	391.9	377.1	-14.8	386.3	383.8	-2.5
	African American	310.0	322.4	12.4	350.7	360.2	9.5
	AK Native/American Indian	387.3	346.9	-40.4	353.2	368.8	15.7
	Asian	405.2	403.0	-2.2	393.1	360.7	-32.4
	Caucasian	394.3	380.8	-13.5	391.4	387.7	-3.7
	Hispanic	374.7	345.2	-29.5	379.9	388.1	8.2
	Multi-Ethnic	419.7	369.3	-50.4	369.0	369.4	0.4
Low Income	Yes	359.1	344.7	-14.4	329.8	342.9	13.1
	No	395.4	379.7	-15.7	390.2	386.0	-4.2
Disabled	Yes	299.9	295.1	-4.8	302.3	305.8	3.5
	No	402.0	386.4	-15.7	394.7	391.2	-3.5
LEP	Yes	361.8	322.9	-38.9	336.7	343.3	6.7
	No	393.2	378.0	-15.2	386.1	383.7	-2.4
Migrant	Yes	380.3	333.8	-46.5	326.4	343.7	17.3
	No	391.7	378.2	-13.5	386.9	384.1	-2.8
Gender	Female	401.7	381.3	-20.4	393.0	386.4	-6.6
	Male	381.1	371.7	-9.4	380.8	380.9	0.1

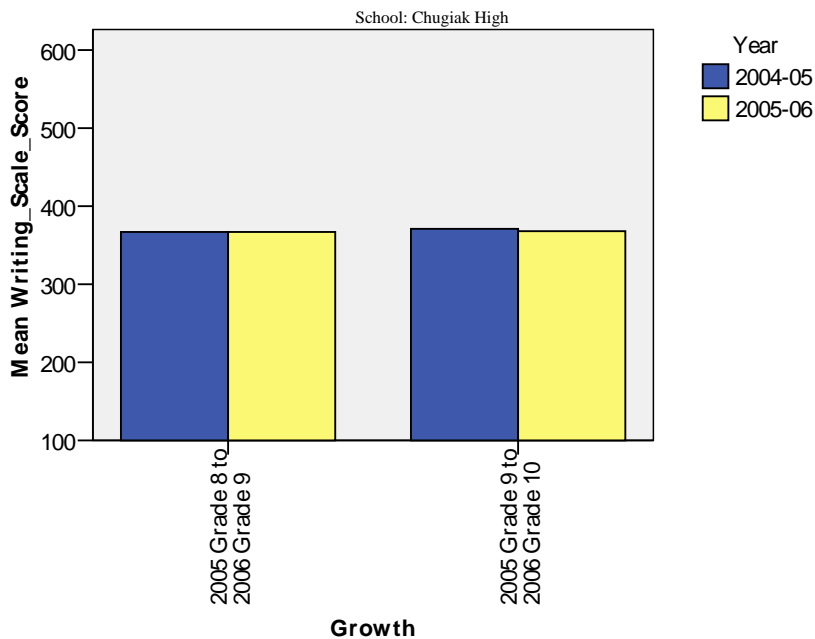
Measure of Growth in SBA Reading for Students Who Tested in 2005 and Again in 2006



Anchorage School District: Profile of Performance 2005-06
Chugiak High SBA Growth in Average Scale Score by NCLB Groups: Writing

		Average Scale Score of Students Tested in District Both Years			Average Scale Score of Students Tested in District Both Years		
		Grade 8 in 2005	Grade 9 in 2006	Difference	Grade 9 in 2005	Grade 10 in 2006	Difference
Ethnicity	All Students	367.3	366.8	-0.5	371.4	367.7	-3.7
	African American	294.7	315.2	20.5	372.9	335.1	-37.8
	AK Native/American Indian	343.2	352.8	9.7	330.0	340.9	10.9
	Asian	363.1	351.7	-11.4	405.8	392.9	-12.9
	Caucasian	370.4	370.7	0.3	375.2	372.0	-3.2
	Hispanic	354.9	347.1	-7.8	358.3	343.8	-14.5
	Multi-Ethnic	407.0	369.4	-37.7	351.7	358.2	6.5
Low Income	Yes	321.8	344.9	23.1	318.7	320.3	1.7
	No	371.2	370.0	-1.2	374.1	370.7	-3.4
Disabled	Yes	285.3	278.8	-6.5	285.4	284.7	-0.7
	No	374.7	377.2	2.5	379.9	376.1	-3.8
LEP	Yes	342.7	324.3	-18.4	302.0	305.4	3.4
	No	367.1	368.7	1.6	370.8	367.9	-2.9
Migrant	Yes	346.4	353.7	7.3	309.2	321.0	11.8
	No	366.9	368.1	1.2	372.3	367.8	-4.5
Gender	Female	382.0	382.4	0.4	389.7	381.2	-8.5
	Male	350.8	352.9	2.1	354.7	357.3	2.7

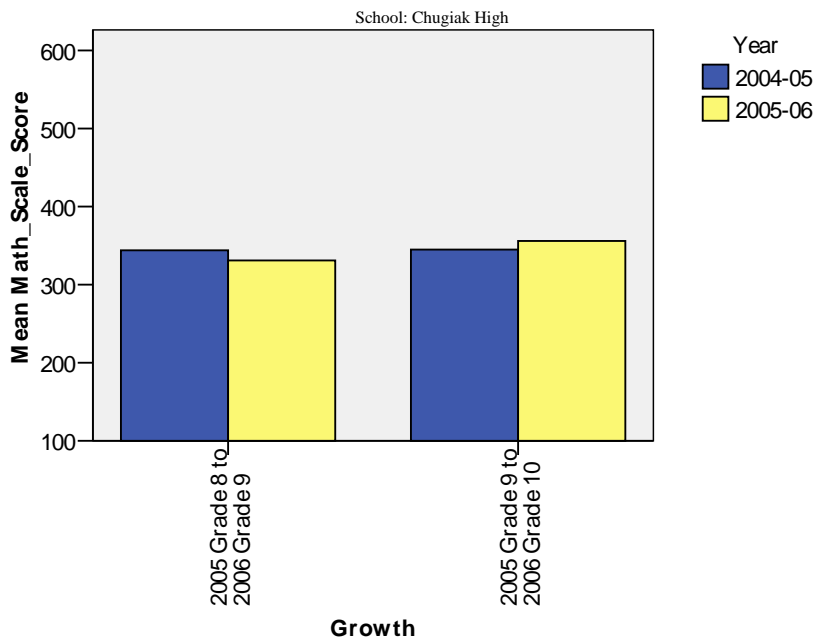
Measure of Growth in SBA Writing for Students Who Tested in 2005 and Again in 2006



Chugiak High SBA Growth in Average Scale Score by NCLB Groups: Math

		Average Scale Score of Students Tested in District Both Years			Average Scale Score of Students Tested in District Both Years		
		Grade 8 in 2005	Grade 9 in 2006	Difference	Grade 9 in 2005	Grade 10 in 2006	Difference
Ethnicity	All Students	343.7	331.3	-12.4	345.0	356.4	11.4
	African American	277.1	280.7	3.6	302.8	295.9	-6.9
	AK Native/American Indian	330.4	317.2	-13.2	319.2	342.0	22.8
	Asian	343.9	324.1	-19.8	393.3	397.8	4.5
	Caucasian	347.0	334.4	-12.7	348.7	361.2	12.5
	Hispanic	326.8	313.9	-12.9	318.7	312.3	-6.3
	Multi-Ethnic	342.2	308.0	-34.2	323.1	331.7	8.6
Low Income	Yes	299.3	297.8	-1.5	288.4	323.7	35.3
	No	347.7	335.2	-12.5	348.9	359.1	10.2
Disabled	Yes	260.7	269.3	8.7	255.0	263.4	8.4
	No	353.1	337.7	-15.4	354.8	364.9	10.1
LEP	Yes	308.4	295.7	-12.7	344.2	340.0	-4.2
	No	344.9	332.1	-12.8	345.3	355.8	10.5
Migrant	Yes	308.0	296.4	-11.7	277.7	313.2	35.5
	No	343.8	331.9	-11.9	345.7	357.3	11.7
Gender	Female	347.2	329.0	-18.2	346.1	349.7	3.6
	Male	340.3	331.8	-8.5	344.4	360.7	16.3

Measure of Growth in SBA Math for Students Who Tested in 2005 and Again in 2006



Anchorage School District: Profile of Performance 2005-06

Chugiak High Grades 9-10 SBA Results Compared with District and State: Reading

Reading		% Advanced			% Proficient			% Below Proficient			% Far Below Proficient			Total Students Tested	Percent Tested		
		School	District	State	School	District	State	School	District	State	School	District	State	School	School	District	State
Ethnicity	All Students	45.9%	37.9%	35.1%	43.8%	43.0%	43.6%	8.9%	15.2%	17.2%	1.4%	4.0%	4.1%	724	98.6%	94.9%	93.7%
	African American	16.7%	19.8%	19.9%	58.3%	45.3%	47.0%	25.0%	26.9%	26.0%	0.0%	7.9%	7.1%	13	100.0%	94.2%	94.0%
	AK Native/ American Indian	33.3%	21.7%	15.6%	42.6%	44.8%	45.0%	14.8%	26.2%	31.2%	9.3%	7.3%	8.3%	55	100.0%	91.7%	92.0%
	Asian	42.1%	20.7%	24.0%	52.6%	49.1%	49.0%	0.0%	22.5%	21.3%	5.3%	7.7%	5.8%	21	95.2%	95.7%	94.6%
	Caucasian	48.5%	49.3%	46.5%	43.2%	40.6%	42.0%	7.6%	8.5%	9.7%	0.7%	1.6%	1.8%	599	98.8%	96.0%	94.4%
	Hispanic	29.4%	20.4%	23.7%	52.9%	48.8%	46.7%	17.6%	24.3%	23.2%	0.0%	6.5%	6.4%	19	94.7%	93.3%	91.9%
	Multi-Ethnic	37.5%	31.5%	33.3%	37.5%	40.1%	42.6%	25.0%	21.6%	18.7%	0.0%	6.8%	5.4%	17	94.1%	91.5%	92.6%
Low Income	Yes	25.9%	17.0%	18.9%	53.4%	44.1%	44.8%	12.1%	28.8%	28.4%	8.6%	10.1%	7.9%	62	98.4%	90.7%	92.7%
	No	47.7%	44.1%	42.4%	42.9%	42.6%	43.1%	8.6%	11.1%	12.1%	0.8%	2.2%	2.4%	662	98.6%	96.3%	94.1%
Disabled	Yes	9.4%	5.7%	6.1%	40.6%	35.4%	32.0%	37.5%	40.1%	42.5%	12.5%	18.7%	19.4%	79	96.2%	85.3%	86.5%
	No	49.6%	41.5%	38.4%	44.1%	43.8%	44.9%	6.0%	12.4%	14.2%	0.3%	2.3%	2.4%	645	98.9%	96.2%	94.6%
LEP	Yes	23.1%	7.1%	5.6%	38.5%	48.8%	43.7%	38.5%	32.5%	39.0%	0.0%	11.6%	11.7%	14	100.0%	92.5%	92.6%
	No	46.3%	42.8%	39.6%	43.9%	42.0%	43.6%	8.3%	12.4%	13.8%	1.5%	2.8%	3.0%	710	98.6%	95.3%	93.9%
Migrant	Yes	20.0%	20.6%	19.5%	53.3%	49.4%	43.6%	13.3%	21.7%	28.1%	13.3%	8.3%	8.8%	16	100.0%	90.9%	94.3%
	No	46.5%	38.3%	36.1%	43.5%	42.8%	43.6%	8.8%	15.0%	16.4%	1.2%	3.9%	3.8%	708	98.6%	95.1%	93.7%
Gender	Female	47.7%	40.4%	37.7%	43.2%	43.8%	45.1%	7.3%	12.9%	14.3%	1.8%	3.0%	2.8%	342	98.2%	95.4%	93.8%
	Male	44.3%	35.4%	32.6%	44.3%	42.2%	42.2%	10.4%	17.4%	19.8%	1.1%	5.0%	5.4%	382	99.0%	94.5%	93.6%

Anchorage School District: Profile of Performance 2005-06

Chugiak High Grades 9-10 SBA Results Compared with District and State: Writing

Writing		% Advanced			% Proficient			% Below Proficient			% Far Below Proficient			Total Students Tested	Percent Tested		
		School	District	State	School	District	State	School	District	State	School	District	State	School	School	District	State
Ethnicity	All Students	5.7%	5.6%	4.4%	80.5%	71.2%	69.0%	11.2%	16.9%	19.5%	2.6%	6.4%	7.0%	724	98.6%	94.6%	93.4%
	African American	0.0%	1.2%	1.2%	69.2%	60.4%	61.6%	30.8%	26.9%	26.0%	0.0%	11.5%	11.3%	13	100.0%	94.3%	94.3%
	AK Native/ American Indian	1.9%	1.6%	1.0%	72.2%	57.6%	53.6%	18.5%	28.7%	32.9%	7.4%	12.1%	12.5%	55	100.0%	90.3%	91.7%
	Asian	10.5%	2.6%	2.8%	78.9%	64.6%	67.3%	10.5%	23.6%	22.9%	0.0%	9.3%	7.0%	21	95.2%	95.9%	94.4%
	Caucasian	6.1%	7.9%	6.4%	82.0%	77.8%	76.6%	9.5%	10.9%	12.7%	2.4%	3.4%	4.2%	599	98.8%	95.8%	94.2%
	Hispanic	0.0%	2.8%	2.9%	83.3%	67.1%	64.3%	16.7%	20.9%	23.4%	0.0%	9.2%	9.3%	19	94.7%	92.0%	91.1%
	Multi-Ethnic	12.5%	4.1%	3.9%	62.5%	61.5%	66.4%	25.0%	24.1%	21.7%	0.0%	10.3%	8.0%	17	94.1%	91.2%	91.9%
Low Income	Yes	1.8%	1.2%	1.5%	75.4%	54.8%	55.3%	17.5%	30.0%	30.4%	5.3%	13.9%	12.7%	62	98.4%	89.6%	92.2%
	No	6.1%	6.9%	5.8%	80.9%	76.0%	75.2%	10.6%	13.0%	14.6%	2.3%	4.1%	4.4%	662	98.6%	96.2%	94.0%
Disabled	Yes	0.0%	0.1%	0.1%	30.8%	26.2%	24.5%	50.8%	43.1%	44.3%	18.5%	30.6%	31.0%	79	96.2%	85.4%	86.6%
	No	6.3%	6.2%	5.0%	85.6%	76.3%	74.2%	7.1%	13.9%	16.6%	0.9%	3.6%	4.2%	645	98.9%	95.8%	94.3%
LEP	Yes	0.0%	0.3%	0.2%	69.2%	51.5%	45.1%	23.1%	33.2%	38.8%	7.7%	15.1%	15.8%	14	100.0%	92.6%	92.6%
	No	5.8%	6.4%	5.1%	80.7%	74.4%	72.7%	11.0%	14.2%	16.5%	2.5%	4.9%	5.6%	710	98.6%	94.9%	93.6%
Migrant	Yes	0.0%	1.7%	1.2%	76.9%	57.4%	56.0%	23.1%	29.5%	30.6%	0.0%	11.4%	12.2%	16	100.0%	88.9%	94.3%
	No	5.8%	5.7%	4.7%	80.6%	71.5%	69.9%	11.0%	16.6%	18.8%	2.6%	6.2%	6.7%	708	98.6%	94.7%	93.4%
Gender	Female	9.1%	7.2%	6.3%	83.0%	76.4%	75.3%	6.1%	12.7%	14.7%	1.8%	3.7%	3.7%	342	98.2%	95.1%	93.6%
	Male	2.7%	4.0%	2.7%	78.2%	66.1%	63.1%	15.8%	20.9%	24.0%	3.3%	9.0%	10.1%	382	99.0%	94.1%	93.2%

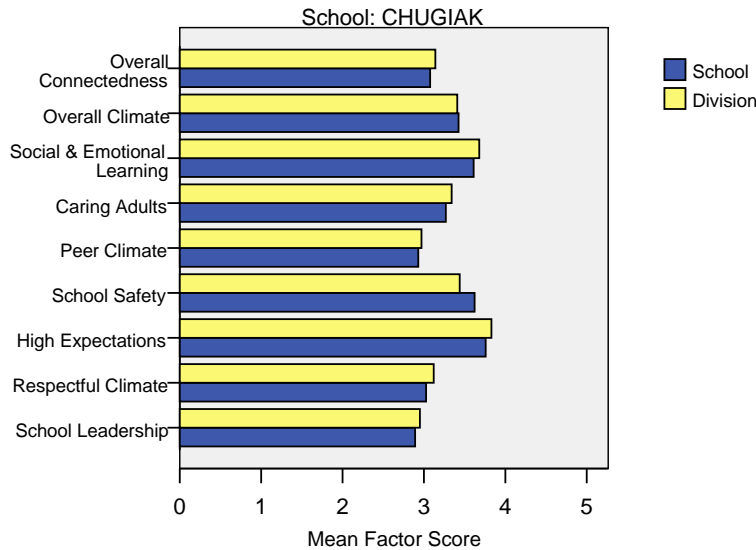
Anchorage School District: Profile of Performance 2005-06

Chugiak High Grades 9-10 SBA Results Compared with District and State: Math

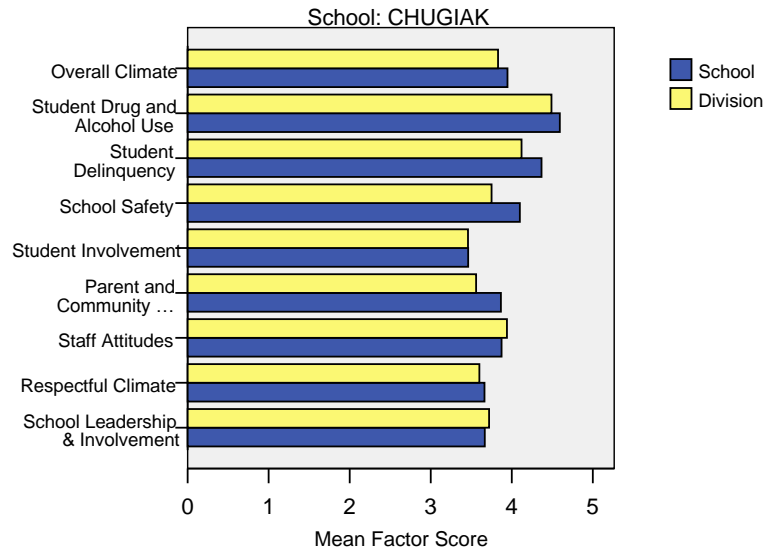
Math		% Advanced			% Proficient			% Below Proficient			% Far Below Proficient			Total Students Tested	Percent Tested		
		School	District	State	School	District	State	School	District	State	School	District	State	School	School	District	State
Ethnicity	All Students	30.4%	24.6%	20.6%	41.7%	39.3%	38.5%	17.2%	18.5%	20.7%	10.7%	17.6%	20.2%	724	98.6%	94.3%	93.2%
	African American	0.0%	8.6%	8.3%	53.8%	29.6%	29.9%	7.7%	25.5%	26.0%	38.5%	36.3%	35.8%	13	100.0%	94.3%	93.9%
	AK Native/ American Indian	18.5%	11.8%	8.7%	44.4%	38.7%	33.0%	18.5%	22.3%	25.0%	18.5%	27.3%	33.3%	55	100.0%	89.0%	91.2%
	Asian	40.0%	19.2%	21.8%	40.0%	40.2%	39.8%	15.0%	20.3%	20.5%	5.0%	20.3%	17.9%	21	95.2%	95.9%	94.9%
	Caucasian	32.8%	32.2%	27.1%	40.9%	41.1%	41.4%	17.0%	15.7%	18.2%	9.4%	11.0%	13.3%	599	98.8%	95.5%	93.9%
	Hispanic	11.1%	12.4%	11.1%	44.4%	35.2%	36.9%	27.8%	24.2%	24.8%	16.7%	28.2%	27.2%	19	94.7%	92.0%	91.6%
	Multi-Ethnic	18.8%	15.6%	16.3%	50.0%	36.7%	36.9%	18.8%	20.4%	21.4%	12.5%	27.2%	25.4%	17	94.1%	92.2%	93.3%
Low Income	Yes	15.3%	9.9%	9.5%	37.3%	33.2%	32.7%	25.4%	24.1%	25.5%	22.0%	32.8%	32.3%	62	98.4%	89.6%	92.2%
	No	31.8%	28.9%	25.6%	42.1%	41.1%	41.1%	16.4%	16.8%	18.5%	9.7%	13.2%	14.8%	662	98.6%	95.8%	93.6%
Disabled	Yes	7.7%	3.2%	2.4%	9.2%	12.1%	12.7%	41.5%	24.2%	23.9%	41.5%	60.5%	61.0%	79	96.2%	85.4%	86.9%
	No	32.7%	27.0%	22.7%	45.0%	42.4%	41.5%	14.7%	17.8%	20.3%	7.6%	12.8%	15.5%	645	98.9%	95.5%	94.0%
LEP	Yes	14.3%	8.2%	5.7%	28.6%	33.2%	28.8%	28.6%	25.3%	27.4%	28.6%	33.3%	38.2%	14	100.0%	92.9%	92.9%
	No	30.7%	27.2%	22.9%	42.0%	40.3%	40.0%	17.0%	17.4%	19.6%	10.4%	15.1%	17.4%	710	98.6%	94.6%	93.3%
Migrant	Yes	6.7%	9.4%	10.9%	46.7%	40.9%	33.9%	26.7%	21.6%	24.1%	20.0%	28.1%	31.0%	16	100.0%	86.4%	94.0%
	No	30.9%	24.9%	21.3%	41.6%	39.3%	38.8%	17.0%	18.4%	20.5%	10.5%	17.4%	19.5%	708	98.6%	94.5%	93.2%
Gender	Female	26.4%	22.6%	19.6%	45.9%	41.9%	40.2%	18.5%	19.6%	21.4%	9.1%	15.8%	18.8%	342	98.2%	94.4%	93.2%
	Male	33.9%	26.4%	21.6%	37.9%	36.8%	36.8%	16.0%	17.4%	20.1%	12.2%	19.4%	21.5%	382	99.0%	94.2%	93.2%

Chugiak High School Climate Survey Results

2006 Student Climate Survey Results



2006 Staff Climate Survey Results



The factors measured in the Student and Staff Climate Survey were:

- **Overall Connectedness – Student Survey:** The Overall Connectedness score for the student survey was computed as an average of three scales: Respectful Climate, Peer Climate, and Caring Adults.
- **Overall Climate – Student Survey:** The Overall Climate score for the student survey was computed as the average of three scales: School Leadership, High Expectations, and School Safety.
- **Overall Climate – Staff Survey:** The Overall Climate score for the staff survey was computed as the average of 6 scales: School Leadership, Respectful Climate, Staff Attitudes, Parent and Community Involvement, Student Involvement, School Safety, Student Delinquency, and Drug and Alcohol Use scores.
- **School Leadership:** Reflects feelings about the decision making of school leaders, fairness of school rules, and student participation in school governance. 1 indicates a low level of school leadership and 5 indicates a high level of school leadership.
- **Respectful Climate:** Fairness of rules and how well students and staff treat one another. 1 indicates a lack of respect and 5 indicates a highly respectful climate.
- **High Expectations:** Expectations of students from peers and adults. 1 indicates a lack of high expectations and 5 indicates very high expectations.

- **School Safety:** Presence of school bullies, gangs and general crime and violence in the community. 1 indicates a low level of safety and 5 indicates a high level of safety.
- **Peer Climate:** Reflects feelings about how respectful and helpful students are to one another. 1 indicates a negative peer climate and 5 indicates a very positive climate.
- **Caring Adults:** Reflects the caring adult relationships students have in the school. 1 indicates a lack of caring relationships and 5 indicates a high number of caring adults.
- **Social & Emotional Learning:** Reflects students' ability to think about the consequences of their actions and to empathize with others. 1 indicates poor social and emotional learning and 5 indicates higher levels of social and emotional learning.
- **Staff Attitudes:** Reflects feelings about competence and attitude towards jobs. 1 indicates more negative attitudes and 5 indicates highly positive attitudes.
- **Parent and Community Involvement:** Accessibility of the school for parents and how connected adults in the community are to the school. 1 indicates a low level of parent and community involvement and 5 indicates a high level of parent and community involvement.
- **Student Involvement:** Reflects feelings about how involved students are in the schools' decision making process. 1 indicates a low level of student involvement and 5 indicates a high level of student involvement.
- **Student Delinquency:** Reflects staff members' reports of witnessed student fights, stealing, and bullying. 1 indicates a high level of delinquency and 5 indicates a low level (5 is most desired).
- **Student Drug and Alcohol Use:** Reflects staff members' reports of observing students under the influence of drugs or alcohol. 1 indicates a high level of drug and alcohol use and 5 indicates a low level (5 is most desired).