

Table 32

**Mount Spurr School Overview**

**Statement of Program**

Mt. Spurr is an elementary school with approximately 300 students in grades k-6. Located on Elmendorf Air Force Base, our students are primarily military dependents.

Mt. Spurr’s curriculum includes reading, writing, spelling, math, health, social studies, science, art, music, library, computer literacy, and physical education. Additionally, students who meet eligibility criteria may receive services in speech/language, bilingual or special education.

From the Report Card/MLP

<b>SCHOOL GOALS</b>	
<b>Goal</b>	<b>Level of Achievement</b>
Decrease by 10% the number of students who are not proficient in math. The percent of students in grades 3-6, as measured on the Standards Based Assessment, who were proficient or above in math will increase from 80.1% to 82.1%.	Attained
Decrease by 10% the number of students who are not proficient in reading. The percent of students in grades K-6, as measured on the Standards Based Assessment or the Developmental Reading Assessment who were proficient or above in literacy (reading and writing) will increase from 85.8% to 88.2%.	Attained

From the School Report Card

<b>BUDGET*</b>	
2004-2005 Actual Expenditures	\$1,520,019
2005-2006 Revised Budgeted Amount	\$1,579,845
2006-2007 Proposed Budget	\$1,651,060

\*Dollars budgeted or expended are general fund only.

From IFAS

	School	District	Source of Information
Membership	305	50,051	Fall OASIS
Capacity	97%	N/A	Board Report - #189 3/7/06
Attendance Rate	95%	93%	SMS end of year report
Retention Rate	0.4%	1.2%	Report Card File
Transiency Rate	32.24%	22.72%	Report Card File
Economically Disadvantaged	66	16,769	Fall OASIS
Ave. Weekly Volunteer Hours	86	5,032	Report Card File
Students Taking an Alternate Assessment	0	264	SMS
Change in Enrollment	-9.4%	0.3%	Report Card File

Anchorage School District: Profile of Performance ..... 2005-2006  
 Mount Spurr School Characteristics

<b>Teacher Qualification</b>				
<b># of teachers</b>	<b>% fully licensed</b>	<b>% with advanced degrees</b>	<b># Nationally Board Certified</b>	<b>% of classes taught by "highly qualified teachers"</b>
21	100%	35%	0	76%

<b>SCHOOL BUSINESS PARTNERSHIPS</b>
None listed

From MLP

<b>ETHNICITY REPORT - OCTOBER 2005</b>						
<b>Caucasian</b>	<b>African American</b>	<b>AK Native/ American Indian</b>	<b>Asian/ Pac. Islander</b>	<b>Hispanic</b>	<b>Multi-Ethnic</b>	<b>Total</b>
217	33	1	5	29	20	305
71.15%	10.82%	0.33%	1.64%	9.51%	6.56%	100.00%

From Fall Oasis

<b>FULL ACADEMIC YEAR (FAY)</b>		
<b>Students Enrolled</b>	<b>Students Enrolled for FAY</b>	<b>Percent FAY</b>
144	123	85.4%

From participation file (3-10 graders)

**Anchorage School District  
2005-2006 Adequate Yearly Progress**

**Mount Spurr Elementary**

**AMO For Language Arts: 71.48%  
AMO For Math: 57.61%**

**Meets AYP**

Group	Participation Rate				"FAY"	Language Arts Performance				Math Performance			
	(A) Number Enrolled	(B) Number Tested	Participation Rate (%)	(C) Participation Rate Met		(D) Tested and Enrolled "FAY"	(E) Proficient on LA	(F) Percent Proficient on LA	(G) LA Target	(H) Met AMO for LA	(I) Proficient on Math	(J) Percent Proficient in Math	(K) Math Target
If there are 20 or fewer students enrolled, value is "N/A"													
All Students	144	143	99.3%	Yes	122	114	93.4%	62%	Yes	107	87.7%	47.2%	Yes
African American	16	16	N/A	N/A	N/A	N/A	N/A	N/A	N/A	N/A	N/A	N/A	N/A
AkNa & Amln	<5	<5	N/A	N/A	N/A	N/A	N/A	N/A	N/A	N/A	N/A	N/A	N/A
Asian	<5	<5	N/A	N/A	N/A	N/A	N/A	N/A	N/A	N/A	N/A	N/A	N/A
Caucasian	100	99	99%	Yes	82	77	93.9%	59.9%	Yes	74	90.2%	44.9%	Yes
Hispanic	12	12	N/A	N/A	N/A	N/A	N/A	N/A	N/A	N/A	N/A	N/A	N/A
Multi-Ethnic	11	11	N/A	N/A	N/A	N/A	N/A	N/A	N/A	N/A	N/A	N/A	N/A
Low Income	34	34	100%	Yes	27	23	85.2%	51.2%	Yes	23	85.2%	35.5%	Yes
Disabled	13	13	N/A	N/A	N/A	N/A	N/A	N/A	N/A	N/A	N/A	N/A	N/A
LEP	<5	<5	N/A	N/A	N/A	N/A	N/A	N/A	N/A	N/A	N/A	N/A	N/A

Attendance Rate: 95.4% (Threshold is 85%)

N/A is used to indicate when a group does not need to be evaluated when:

- (1) 20 or fewer students are enrolled in a group for all groups except "All Students".
- (2) 40 or fewer students are enrolled FAY (column D) in the Disabled & LEP groups.

\* For the groups where the number enrolled is fewer than or equal to 40, participation is met when no more than 2 miss the test. Groups can also meet this target using the average of the past two or three years.

\*\* Where a group achieves a "Yes" without meeting the listed target, it has done so using either the 99% confidence interval or Safe Harbor.

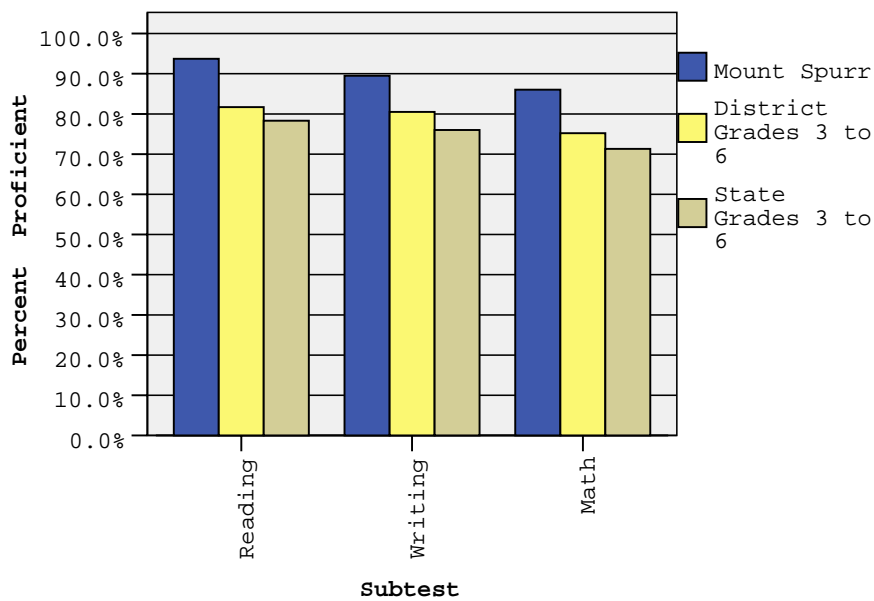
\*\*\* Results cannot be published without releasing personally identifiable information.

This document was prepared by the ASD Assessment and Evaluation 7/19/2006

Mount Spurr Elementary School SBA Proficiency – Spring 2006

	Reading		Writing		Math	
	2005 Proficient	2006 Proficient	2005 Proficient	2006 Proficient	2005 Proficient	2006 Proficient
All Grades	88.2%	93.7%	86.3%	89.5%	79.6%	86.0%
3 <sup>rd</sup> Grade	93.8%	97.1%	93.6%	94.3%	83.7%	94.3%
4 <sup>th</sup> Grade	80.0%	95.1%	80.0%	92.7%	73.3%	87.8%
5 <sup>th</sup> Grade	88.9%	86.5%	86.1%	83.8%	80.6%	81.1%
6 <sup>th</sup> Grade	90.6%	96.7%	84.4%	86.7%	81.3%	80.0%

SBA Spring 2006 Proficiency Rate Comparison of School, District, and State \*



\* District and State Grades 3 to 6

**Anchorage School District: Profile of Performance ..... 2005-2006**

**Mount Spurr SBA Proficiency by NCLB Groups – Spring 2006**

		Reading		Writing		Math	
		Proficient	Not Proficient	Proficient	Not Proficient	Proficient	Not Proficient
Ethnicity	All Students	93.7%	6.3%	89.5%	10.5%	86.0%	14.0%
	African American	87.5%	12.5%	93.8%	6.3%	68.8%	31.3%
	AK Native/ American Indian	100.0%	0.0%	100.0%	0.0%	100.0%	0.0%
	Asian	75.0%	25.0%	75.0%	25.0%	75.0%	25.0%
	Caucasian	94.9%	5.1%	89.9%	10.1%	87.9%	12.1%
	Hispanic	100.0%	0.0%	91.7%	8.3%	100.0%	0.0%
	Multi-Ethnic	90.9%	9.1%	81.8%	18.2%	81.8%	18.2%
LowIncome	Yes	85.3%	14.7%	82.4%	17.6%	82.4%	17.6%
	No	96.3%	3.7%	91.7%	8.3%	87.2%	12.8%
Disabled	Yes	69.2%	30.8%	69.2%	30.8%	53.8%	46.2%
	No	96.2%	3.8%	91.5%	8.5%	89.2%	10.8%
LEP	Yes	100.0%	0.0%	100.0%	0.0%	100.0%	0.0%
	No	93.5%	6.5%	89.2%	10.8%	85.6%	14.4%
Migrant	Yes	0.0%	0.0%	0.0%	0.0%	0.0%	0.0%
	No	93.7%	6.3%	89.5%	10.5%	86.0%	14.0%
Gender	Female	98.5%	1.5%	93.9%	6.1%	89.4%	10.6%
	Male	89.6%	10.4%	85.7%	14.3%	83.1%	16.9%

**Anchorage School District: Profile of Performance ..... 2005-2006**

Mount Spurr SBA Mean Scale Score Comparison: 2004-2005 to 2005-2006

		Reading		Writing		Math	
		2004-2005 Mean Scale Score	2005-2006 Mean Scale Score	2004-2005 Mean Scale Score	2005-2006 Mean Scale Score	2004-2005 Mean Scale Score	2005-2006 Mean Scale Score
Ethnicity	All Students	385.8	399.5	376.5	388.1	359.4	374.4
	African American	370.3	386.1	364.9	377.1	339.2	340.4
	AK Native/ American Indian	384.0	373.0	326.5	313.0	286.5	354.0
	Asian	402.6	392.8	388.4	397.3	353.0	388.8
	Caucasian	383.8	398.0	376.6	386.5	360.4	376.5
	Hispanic	407.7	428.2	391.3	412.9	378.6	399.9
	Multi-Ethnic	416.3	405.9	386.2	395.2	397.0	374.7
Low Income	Yes	391.1	383.4	373.8	374.2	369.7	369.0
	No	384.7	404.5	377.0	392.4	357.3	376.1
Disabled	Yes	327.9	326.7	315.2	341.8	304.3	322.9
	No	394.9	406.8	386.3	392.7	368.0	379.6
LEP	Yes	389.0	409.0	336.7	362.0	354.7	364.5
	No	385.7	399.2	377.3	388.8	359.5	374.7
Migrant	Yes	.	.	.	.	.	.
	No	385.8	399.5	376.5	388.1	359.4	374.4
Gender	Female	394.6	404.6	388.7	396.9	354.7	373.6
	Male	377.5	395.1	364.9	380.6	363.7	375.1

. No students tested in both years in this category

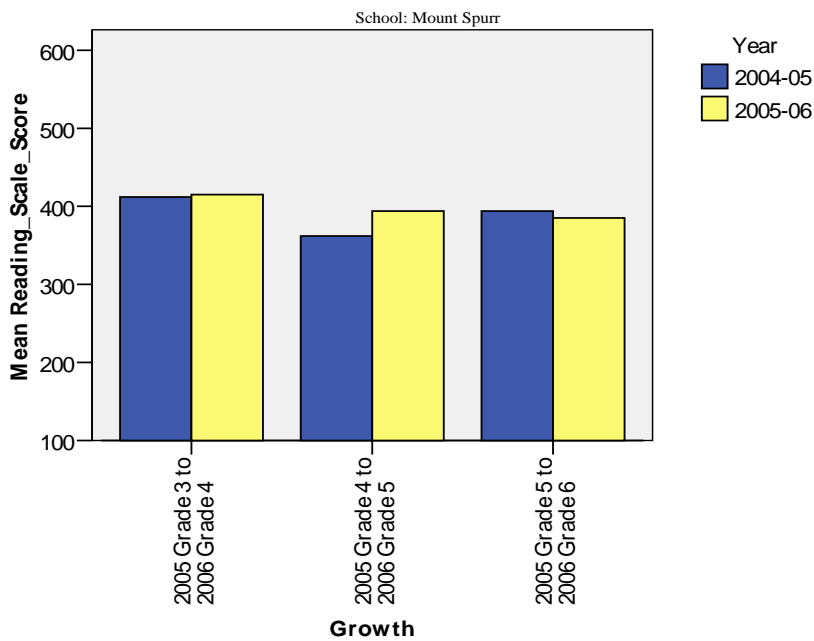
**Anchorage School District: Profile of Performance ..... 2005-2006**

**Mount Spurr SBA Growth in Average Scale Score by NCLB Groups: Reading**

		Average Scale Score of Students Tested in District Both Years			Average Scale Score of Students Tested in District Both Years			Average Scale Score of Students Tested in District Both Years		
		Grade 3 in 2005	Grade 4 in 2006	Difference	Grade 4 in 2005	Grade 5 in 2006	Difference	Grade 5 in 2005	Grade 6 in 2006	Difference
Ethnicity	All Students	412.0	415.4	3.4	361.7	394.2	32.5	393.9	385.1	-8.8
	African American	357.8	384.9	27.1	347.7	392.3	44.7	403.0	369.4	-33.7
	AK Native/American Indian	.	.	.	.	.	.	413.8	372.9	-40.9
	Asian	.	248.8	.	367.4	440.7	73.3	.	.	.
	Caucasian	412.7	417.2	4.5	362.9	391.1	28.2	388.3	386.8	-1.5
	Hispanic	437.7	472.3	34.7	338.0	362.4	24.4	405.7	360.2	-45.5
	Multi-Ethnic	429.1	392.7	-36.4	392.8	380.9	-11.9	413.7	405.3	-8.3
LowIncome	Yes	389.4	385.7	-3.7	319.2	370.0	50.8	410.1	351.7	-58.4
	No	415.9	424.1	8.2	373.3	403.8	30.5	392.4	391.7	-0.7
Disabled	Yes	388.0	370.4	-17.7	272.7	265.2	-7.5	381.9	353.1	-28.8
	No	414.8	417.9	3.1	374.7	409.3	34.7	396.0	387.4	-8.6
LEP	Yes	.	.	.	.	.	.	428.8	372.9	-55.9
	No	412.3	414.8	2.5	362.4	393.7	31.3	391.2	386.0	-5.2
Migrant	Yes	.	.	.	.	.	.	.	.	.
	No	411.7	415.3	3.7	362.0	394.4	32.4	393.7	385.2	-8.5
Gender	Female	378.1	409.7	31.6	372.8	404.9	32.1	405.7	396.3	-9.3
	Male	435.4	417.7	-17.7	347.2	376.0	28.8	388.1	376.7	-11.4

. No students tested in both years in this category

**Measure of Growth in SBA Reading for Students Who Tested in 2005 and Again in 2006**



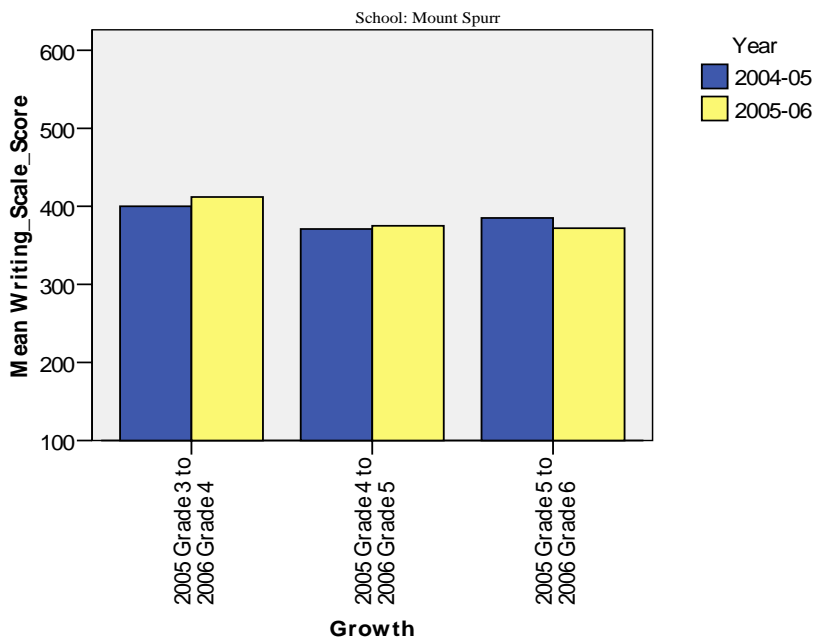
**Anchorage School District: Profile of Performance ..... 2005-2006**

**Mount Spurr SBA Growth in Average Scale Score by NCLB Groups: Writing**

		Average Scale Score of Students Tested in District Both Years			Average Scale Score of Students Tested in District Both Years			Average Scale Score of Students Tested in District Both Years		
		Grade 3 in 2005	Grade 4 in 2006	Difference	Grade 4 in 2005	Grade 5 in 2006	Difference	Grade 5 in 2005	Grade 6 in 2006	Difference
Ethnicity	All Students	399.7	412.2	12.5	370.9	375.1	4.2	385.3	371.8	-13.5
	African American	353.7	404.3	50.7	348.0	349.4	1.4	366.7	392.2	25.5
	AK Native/American Indian	.	.	.	.	.	.	280.7	313.3	32.7
	Asian	.	264.7	.	399.2	441.0	41.8	.	.	.
	Caucasian	404.9	414.1	9.2	367.3	376.8	9.5	392.4	367.7	-24.7
	Hispanic	436.0	464.4	28.4	371.7	311.2	-60.5	368.9	340.1	-28.8
	Multi-Ethnic	354.8	374.9	20.1	456.7	347.3	-109.4	419.0	427.4	8.4
LowIncome	Yes	369.2	391.0	21.8	309.1	361.7	52.6	402.8	344.9	-57.9
	No	405.3	418.8	13.5	387.4	380.7	-6.7	382.2	377.0	-5.2
Disabled	Yes	326.7	418.2	91.5	305.9	282.1	-23.8	413.3	337.8	-75.5
	No	408.7	412.3	3.7	380.0	387.4	7.4	381.7	374.2	-7.5
LEP	Yes	.	.	.	.	.	.	342.7	348.3	5.7
	No	400.4	411.7	11.3	371.2	375.0	3.8	389.1	372.7	-16.4
Migrant	Yes	.	.	.	.	.	.	.	.	.
	No	400.0	412.4	12.4	370.7	375.2	4.5	384.9	372.1	-12.8
Gender	Female	383.8	407.9	24.1	393.7	388.3	-5.3	385.0	386.4	1.4
	Male	411.2	415.0	3.8	339.1	353.7	14.6	384.8	360.9	-23.9

. No students tested in both years in this category

**Measure of Growth in SBA Writing for Students Who Tested in 2005 and Again in 2006**



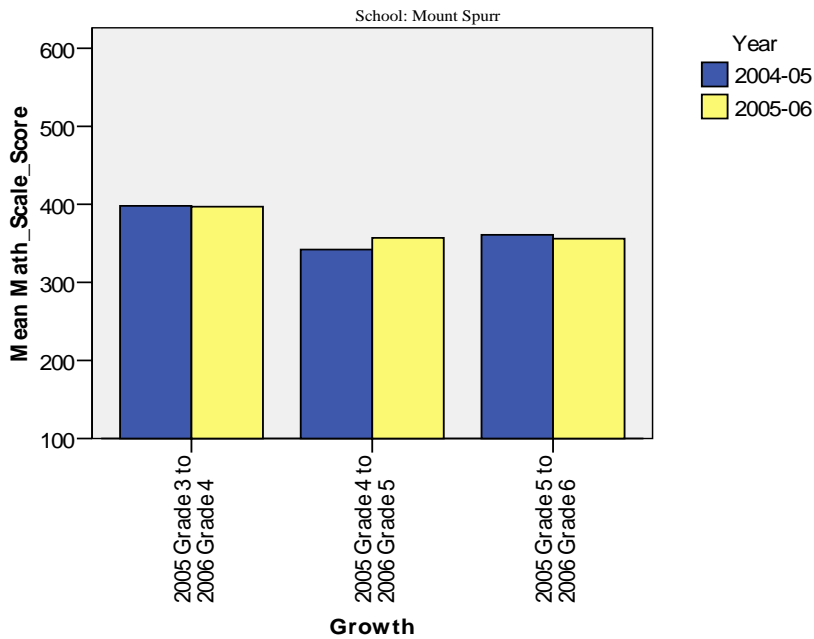
**Anchorage School District: Profile of Performance ..... 2005-2006**

**Mount Spurr SBA Growth in Average Scale Score by NCLB Groups: Math**

		Average Scale Score of Students Tested in District Both Years			Average Scale Score of Students Tested in District Both Years			Average Scale Score of Students Tested in District Both Years		
		Grade 3 in 2005	Grade 4 in 2006	Difference	Grade 4 in 2005	Grade 5 in 2006	Difference	Grade 5 in 2005	Grade 6 in 2006	Difference
Ethnicity	All Students	397.7	397.3	-0.3	342.0	357.4	15.4	360.7	356.2	-4.5
	African American	313.1	333.7	20.6	301.8	325.9	24.1	328.7	322.3	-6.3
	AK Native/American Indian	.	.	.	.	.	.	295.1	353.7	58.6
	Asian	.	287.1	.	372.3	422.8	50.5	.	.	.
	Caucasian	406.0	403.4	-2.6	340.7	359.2	18.5	356.9	354.1	-2.8
	Hispanic	424.8	435.9	11.1	305.7	300.3	-5.3	424.0	345.4	-78.7
	Multi-Ethnic	409.2	382.0	-27.2	440.1	334.7	-105.4	390.8	397.9	7.1
LowIncome	Yes	364.3	382.8	18.5	313.4	350.7	37.3	383.2	344.0	-39.2
	No	403.7	402.3	-1.3	349.0	359.4	10.4	357.7	358.2	0.5
Disabled	Yes	346.1	362.7	16.6	300.8	275.9	-24.9	349.7	301.3	-48.4
	No	405.4	399.7	-5.7	347.2	367.0	19.8	362.1	359.7	-2.4
LEP	Yes	.	.	.	.	.	.	395.4	359.7	-35.7
	No	398.0	397.4	-0.6	341.7	357.2	15.5	357.9	355.1	-2.8
Migrant	Yes	.	.	.	.	.	.	.	.	.
	No	398.2	397.0	-1.2	342.1	356.7	14.6	360.8	355.9	-4.9
Gender	Female	377.3	385.8	8.5	343.4	360.7	17.3	359.2	367.0	7.8
	Male	412.7	406.2	-6.5	339.9	350.1	10.2	362.3	346.8	-15.5

. No students tested in both years in this category

**Measure of Growth in SBA Math for Students Who Tested in 2005 and Again in 2006**



Anchorage School District: Profile of Performance ..... 2005-2006

Mount Spurr Grades 3-6 SBA Results Compared with District and State: Reading

Reading		% Advanced			% Proficient			% Below Proficient			% Far Below Proficient			Total Students Tested	Percent Tested		
		School	District	State	School	District	State	School	District	State	School	District	State	School	School	District	State
Ethnicity	All Students	42.7%	34.6%	31.2%	51.0%	47.1%	47.1%	4.9%	12.0%	14.1%	1.4%	6.3%	7.7%	144	99.3%	98.1%	98.1%
	African American	37.5%	20.7%	21.4%	50.0%	51.1%	52.9%	12.5%	18.9%	17.1%	0.0%	9.4%	8.6%	16	100.0%	98.2%	98.5%
	AK Native/American Indian	*	19.3%	12.4%	*	49.7%	45.5%	*	19.1%	25.7%	*	11.9%	16.4%	*	100.0%	97.5%	97.7%
	Asian	*	24.7%	27.4%	*	49.6%	50.7%	*	16.3%	14.8%	*	9.4%	7.0%	*	100.0%	97.1%	97.5%
	Caucasian	39.4%	44.8%	41.6%	55.6%	44.3%	46.3%	4.0%	7.4%	8.2%	1.0%	3.5%	3.8%	100	99.0%	98.5%	98.3%
	Hispanic	58.3%	22.4%	22.4%	41.7%	51.8%	53.0%	0.0%	17.3%	17.3%	0.0%	8.5%	7.3%	12	100.0%	97.0%	97.2%
	Multi-Ethnic	63.6%	27.4%	28.2%	27.3%	50.5%	50.5%	9.1%	14.8%	13.9%	0.0%	7.4%	7.3%	11	100.0%	98.5%	98.7%
Low Income	Yes	38.2%	18.7%	17.4%	47.1%	51.0%	48.4%	11.8%	19.4%	21.3%	2.9%	11.0%	12.9%	34	100.0%	97.6%	97.9%
	No	44.0%	45.1%	41.4%	52.3%	44.5%	46.1%	2.8%	7.2%	8.6%	0.9%	3.3%	3.8%	110	99.1%	98.4%	98.2%
Disabled	Yes	7.7%	8.8%	8.1%	61.5%	36.7%	35.2%	23.1%	28.5%	29.9%	7.7%	26.1%	26.8%	13	100.0%	93.7%	94.0%
	No	46.2%	39.1%	34.9%	50.0%	48.9%	49.1%	3.1%	9.1%	11.4%	0.8%	2.9%	4.5%	131	99.2%	98.9%	98.8%
LEP	Yes	*	15.1%	9.0%	*	52.1%	43.7%	*	20.5%	28.6%	*	12.4%	18.7%	*	100.0%	96.7%	97.3%
	No	43.2%	38.3%	35.5%	50.4%	46.1%	47.8%	5.0%	10.4%	11.2%	1.4%	5.2%	5.6%	140	99.3%	98.3%	98.2%
Migrant	Yes	0.0%	20.0%	13.0%	0.0%	53.7%	44.6%	0.0%	17.1%	25.2%	0.0%	9.2%	17.2%	0	0.0%	99.4%	98.1%
	No	42.7%	35.1%	32.3%	51.0%	46.9%	47.3%	4.9%	11.8%	13.3%	1.4%	6.2%	7.1%	144	99.3%	98.0%	98.1%
Gender	Female	47.0%	39.3%	34.9%	51.5%	46.2%	47.0%	1.5%	10.0%	12.3%	0.0%	4.5%	5.8%	67	98.5%	98.5%	98.4%
	Male	39.0%	30.0%	27.5%	50.6%	47.9%	47.2%	7.8%	13.9%	15.7%	2.6%	8.1%	9.5%	77	100.0%	97.7%	97.7%

\*The total number of students tested in this category is fewer than 5. Results cannot be reported according to the state's protocol for reporting results.

Anchorage School District: Profile of Performance ..... 2005-2006

Mount Spurr Grades 3-6 SBA Results Compared with District and State: Writing

Writing		% Advanced			% Proficient			% Below Proficient			% Far Below Proficient			Total Students Tested	Percent Tested		
		School	District	State	School	District	State	School	District	State	School	District	State	School	School	District	State
Ethnicity	All Students	37.1%	31.4%	27.4%	52.4%	49.1%	48.6%	10.5%	18.0%	21.9%	0.0%	1.6%	2.1%	144	99.3%	98.1%	98.1%
	African American	31.3%	18.0%	18.8%	62.5%	50.7%	52.0%	6.3%	29.2%	27.3%	0.0%	2.1%	1.9%	16	100.0%	98.2%	98.3%
	AK Native/ American Indian	*	15.5%	10.5%	*	52.5%	45.2%	*	28.7%	39.6%	*	3.2%	4.7%	*	100.0%	97.5%	97.9%
	Asian	*	25.7%	27.6%	*	49.8%	51.0%	*	21.9%	19.3%	*	2.6%	2.0%	*	100.0%	97.0%	97.5%
	Caucasian	34.3%	40.5%	36.3%	55.6%	47.1%	49.0%	10.1%	11.6%	13.7%	0.0%	0.8%	1.0%	100	99.0%	98.5%	98.2%
	Hispanic	50.0%	20.9%	20.2%	41.7%	52.7%	55.2%	8.3%	24.5%	23.1%	0.0%	1.8%	1.5%	12	100.0%	97.0%	97.2%
	Multi-Ethnic	54.5%	25.2%	25.6%	27.3%	51.2%	51.5%	18.2%	21.8%	21.0%	0.0%	1.9%	1.9%	11	100.0%	98.5%	98.6%
Low Income	Yes	26.5%	16.4%	15.3%	55.9%	52.2%	48.7%	17.6%	28.5%	32.4%	0.0%	2.9%	3.6%	34	100.0%	97.6%	98.0%
	No	40.4%	41.3%	36.5%	51.4%	47.0%	48.6%	8.3%	11.1%	13.9%	0.0%	0.7%	0.9%	110	99.1%	98.4%	98.1%
Disabled	Yes	23.1%	7.7%	6.4%	46.2%	40.2%	38.5%	30.8%	45.6%	47.9%	0.0%	6.5%	7.2%	13	100.0%	93.8%	94.2%
	No	38.5%	35.5%	30.9%	53.1%	50.6%	50.3%	8.5%	13.1%	17.6%	0.0%	0.7%	1.2%	131	99.2%	98.9%	98.7%
LEP	Yes	*	14.9%	9.1%	*	53.9%	45.1%	*	28.3%	41.0%	*	2.9%	4.8%	*	100.0%	96.6%	97.5%
	No	38.1%	34.6%	31.0%	51.1%	48.1%	49.3%	10.8%	16.0%	18.1%	0.0%	1.3%	1.5%	140	99.3%	98.3%	98.2%
Migrant	Yes	0.0%	20.2%	12.2%	0.0%	50.6%	43.4%	0.0%	26.5%	39.8%	0.0%	2.7%	4.5%	0	0.0%	99.4%	98.3%
	No	37.1%	31.8%	28.4%	52.4%	49.0%	49.0%	10.5%	17.7%	20.7%	0.0%	1.5%	1.9%	144	99.3%	98.0%	98.1%
Gender	Female	40.9%	37.8%	33.4%	53.0%	47.8%	47.9%	6.1%	13.5%	17.4%	0.0%	1.0%	1.3%	67	98.5%	98.4%	98.4%
	Male	33.8%	25.2%	21.7%	51.9%	50.3%	49.3%	14.3%	22.3%	26.2%	0.0%	2.2%	2.8%	77	100.0%	97.7%	97.7%

\*The total number of students tested in this category is fewer than 5. Results cannot be reported according to the state's protocol for reporting results.

Anchorage School District: Profile of Performance ..... 2005-2006

Mount Spurr Grades 3-6 SBA Results Compared with District and State: Math

Math		% Advanced			% Proficient			% Below Proficient			% Far Below Proficient			Total Students Tested	Percent Tested		
		School	District	State	School	District	State	School	District	State	School	District	State	School	School	District	State
Ethnicity	All Students	48.3%	38.3%	32.9%	37.8%	37.0%	38.4%	10.5%	13.1%	14.7%	3.5%	11.7%	14.0%	144	99.3%	98.4%	98.2%
	African American	31.3%	19.2%	19.7%	37.5%	39.8%	40.5%	18.8%	18.2%	19.7%	12.5%	22.9%	20.0%	16	100.0%	98.2%	98.5%
	AK Native/ American Indian	*	24.5%	16.3%	*	40.1%	37.1%	*	17.2%	21.4%	*	18.1%	25.2%	*	100.0%	97.4%	97.7%
	Asian	*	33.8%	35.2%	*	37.3%	39.0%	*	13.7%	13.5%	*	15.2%	12.4%	*	100.0%	98.6%	98.8%
	Caucasian	48.5%	47.7%	41.6%	39.4%	35.1%	38.5%	10.1%	10.3%	11.2%	2.0%	6.9%	8.6%	100	99.0%	98.5%	98.3%
	Hispanic	66.7%	27.2%	26.4%	33.3%	39.1%	40.9%	0.0%	19.3%	18.3%	0.0%	14.5%	14.4%	12	100.0%	99.0%	98.7%
	Multi-Ethnic	54.5%	31.5%	32.1%	27.3%	39.6%	39.6%	9.1%	13.9%	13.6%	9.1%	15.0%	14.7%	11	100.0%	98.7%	98.8%
Low Income	Yes	44.1%	23.2%	20.5%	38.2%	39.3%	38.6%	14.7%	18.1%	19.3%	2.9%	19.4%	21.6%	34	100.0%	98.1%	98.1%
	No	49.5%	48.3%	42.1%	37.6%	35.4%	38.3%	9.2%	9.7%	11.2%	3.7%	6.6%	8.4%	110	99.1%	98.6%	98.3%
Disabled	Yes	30.8%	12.7%	11.0%	23.1%	29.6%	28.7%	23.1%	22.4%	22.6%	23.1%	35.3%	37.7%	13	100.0%	93.7%	94.1%
	No	50.0%	42.7%	36.5%	39.2%	38.2%	40.0%	9.2%	11.4%	13.4%	1.5%	7.6%	10.1%	131	99.2%	99.3%	98.9%
LEP	Yes	*	23.6%	14.7%	*	38.5%	35.1%	*	18.1%	22.4%	*	19.8%	27.8%	*	100.0%	98.8%	98.3%
	No	48.9%	41.2%	36.5%	36.7%	36.7%	39.1%	10.8%	12.1%	13.1%	3.6%	10.1%	11.3%	140	99.3%	98.3%	98.2%
Migrant	Yes	0.0%	25.7%	18.7%	0.0%	38.4%	35.1%	0.0%	17.6%	20.1%	0.0%	18.4%	26.1%	0	0.0%	99.4%	98.1%
	No	48.3%	38.7%	33.8%	37.8%	36.9%	38.7%	10.5%	12.9%	14.3%	3.5%	11.4%	13.2%	144	99.3%	98.4%	98.2%
Gender	Female	48.5%	38.1%	33.0%	40.9%	37.8%	39.2%	6.1%	13.3%	14.8%	4.5%	10.9%	13.1%	67	98.5%	98.7%	98.5%
	Male	48.1%	38.5%	32.8%	35.1%	36.2%	37.7%	14.3%	12.9%	14.6%	2.6%	12.5%	14.9%	77	100.0%	98.1%	97.9%

\*The total number of students tested in this category is fewer than 5. Results cannot be reported according to the state's protocol for reporting results.

Anchorage School District: Profile of Performance ..... 2005-2006

Mount Spurr TerraNova 5th grade

Percent in each quartile

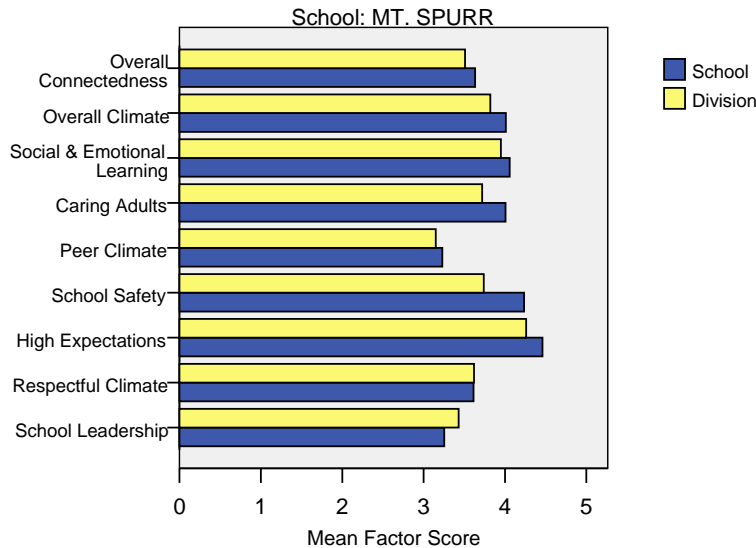
Reading	Above Average		Average				Below Average	
	4th Quartile (76-99 percentile)		3rd Quartile (51-75 percentile)		2nd Quartile (26-50 percentile)		1st Quartile (1-25 percentile)	
	School	District	School	District	School	District	School	District
2005-2006	33.3%	30.4%	30.6%	26.8%	19.4%	24.5%	16.7%	18.3%
2004-2005	28.9%	29.2%	26.3%	27.6%	31.6%	24.5%	13.2%	18.7%
2003-2004	42.9%	30.6%	40.0%	26.9%	14.3%	24.2%	2.9%	18.3%
2002-2003	42.4%	29.1%	24.2%	26.6%	24.2%	23.8%	9.1%	20.5%
2001-2002	41.0%	30.3%	30.8%	26.0%	25.6%	24.6%	2.6%	19.0%

Language	Above Average		Average				Below Average	
	4th Quartile (76-99 percentile)		3rd Quartile (51-75 percentile)		2nd Quartile (26-50 percentile)		1st Quartile (1-25 percentile)	
	School	District	School	District	School	District	School	District
2005-2006	44.4%	34.0%	25.0%	26.5%	16.7%	22.0%	13.9%	17.5%
2004-2005	31.6%	32.1%	34.2%	28.3%	21.1%	21.2%	13.2%	18.4%
2003-2004	51.4%	34.1%	42.9%	26.5%	2.9%	21.7%	2.9%	17.7%
2002-2003	48.5%	32.8%	33.3%	26.5%	9.1%	20.9%	9.1%	19.8%
2001-2002	53.8%	32.3%	15.4%	26.4%	25.6%	22.9%	5.1%	18.4%

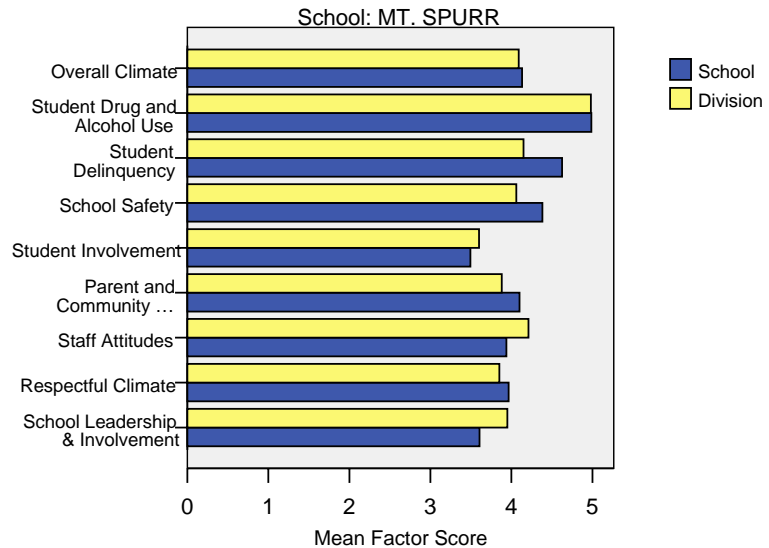
Math	Above Average		Average				Below Average	
	4th Quartile (76-99 percentile)		3rd Quartile (51-75 percentile)		2nd Quartile (26-50 percentile)		1st Quartile (1-25 percentile)	
	School	District	School	District	School	District	School	District
2005-2006	27.8%	28.4%	44.4%	31.9%	13.9%	22.3%	13.9%	17.5%
2004-2005	26.3%	26.9%	39.5%	31.1%	31.6%	22.9%	2.6%	19.1%
2003-2004	42.9%	28.3%	40.0%	29.3%	17.1%	22.6%	0.0%	19.8%
2002-2003	33.3%	24.7%	48.5%	30.6%	9.1%	22.6%	9.1%	22.1%
2001-2002	46.2%	24.1%	20.5%	30.1%	28.2%	24.8%	5.1%	20.9%

Mount Spurr School Climate Survey Results

2006 Student Climate Survey Results



2006 Staff Climate Survey Results



The factors measured in the Student and Staff Climate Survey were:

- **Overall Connectedness – Student Survey:** The Overall Connectedness score for the student survey was computed as an average of three scales: Respectful Climate, Peer Climate, and Caring Adults.
- **Overall Climate – Student Survey:** The Overall Climate score for the student survey was computed as the average of three scales: School Leadership, High Expectations, and School Safety.
- **Overall Climate – Staff Survey:** The Overall Climate score for the staff survey was computed as the average of 6 scales: School Leadership, Respectful Climate, Staff Attitudes, Parent and Community Involvement, Student Involvement, School Safety, Student Delinquency, and Drug and Alcohol Use scores.
- **School Leadership:** Reflects feelings about the decision making of school leaders, fairness of school rules, and student participation in school governance. 1 indicates a low level of school leadership and 5 indicates a high level of school leadership.
- **Respectful Climate:** Fairness of rules and how well students and staff treat one another. 1 indicates a lack of respect and 5 indicates a highly respectful climate.
- **High Expectations:** Expectations of students from peers and adults. 1 indicates a lack of high expectations and 5 indicates very high expectations.

- **School Safety:** Presence of school bullies, gangs and general crime and violence in the community. 1 indicates a low level of safety and 5 indicates a high level of safety.
- **Peer Climate:** Reflects feelings about how respectful and helpful students are to one another. 1 indicates a negative peer climate and 5 indicates a very positive climate.
- **Caring Adults:** Reflects the caring adult relationships students have in the school. 1 indicates a lack of caring relationships and 5 indicates a high number of caring adults.
- **Social & Emotional Learning:** Reflects students' ability to think about the consequences of their actions and to empathize with others. 1 indicates poor social and emotional learning and 5 indicates higher levels of social and emotional learning.
- **Staff Attitudes:** Reflects feelings about competence and attitude towards jobs. 1 indicates more negative attitudes and 5 indicates highly positive attitudes.
- **Parent and Community Involvement:** Accessibility of the school for parents and how connected adults in the community are to the school. 1 indicates a low level of parent and community involvement and 5 indicates a high level of parent and community involvement.
- **Student Involvement:** Reflects feelings about how involved students are in the schools' decision making process. 1 indicates a low level of student involvement and 5 indicates a high level of student involvement.
- **Student Delinquency:** Reflects staff members' reports of witnessed student fights, stealing, and bullying. 1 indicates a high level of delinquency and 5 indicates a low level (5 is most desired).
- **Student Drug and Alcohol Use:** Reflects staff members' reports of observing students under the influence of drugs or alcohol. 1 indicates a high level of drug and alcohol use and 5 indicates a low level (5 is most desired).