

Table 38

Nunaka Valley School Overview

Statement of Program

Nunaka Valley Elementary School is a neighborhood school located in Northeast Anchorage, nestled between Russian Jack Park and Nunaka Valley Park and ball fields. The school provides a complete K-6 educational program with emphasis on academic achievement, cooperation and social/emotional learning. We strive to build partnerships with families to increase the developmental assets of our students and support each student’s goal of reaching his or her potential. Nunaka Valley also provides early intervention for preschool aged children with disabilities. Our staff is dedicated to offering a stimulating and child centered educational program while being committed to maintaining a safe and positive learning environment. Our PTA offers monthly activities to encourage family participation and provide opportunities for positive social interaction. We welcome families as active participants in the learning process.

From the Report Card/MLP

SCHOOL GOALS	
Goal	Level of Achievement
Nunaka Valley will show a 10% decrease in the percentage of students who are not proficient in math on the state Standards Based Assessments in grades 3-6.	Partially Attained
Increase the number of students proficient in reading by 5% as measured by the DRA.	Not Attained
Reinforce a positive school wide climate and expand the positive discipline program.	Attained

From the School Report Card

BUDGET*	
2004-2005 Actual Expenditures	\$1,341,093
2005-2006 Revised Budgeted Amount	\$1,422,515
2006-2007 Proposed Budget	\$1,590,562
*Dollars budgeted or expended are general fund only.	

From IFAS

	School	District	Source of Information
Membership	318	50,051	Fall OASIS
Capacity	102%	N/A	Board Report - #189 3/7/06
Attendance Rate	94%	93%	SMS end of year report
Retention Rate	0.0%	1.2%	Report Card File
Transiency Rate	26.96%	22.72%	Report Card File
Economically Disadvantaged	177	16,769	Fall OASIS
Ave. Weekly Volunteer Hours	20	5,032	Report Card File
Students Taking an Alternate Assessment	1	264	SMS
Change in Enrollment	8.2%	0.3%	Report Card File

Nunaka Valley School Characteristics

Teacher Qualification				
# of teachers	% fully licensed	% with advanced degrees	# Nationally Board Certified	% of classes taught by "highly qualified teachers"
25	100%	38%	1	86%

SCHOOL BUSINESS PARTNERSHIPS
Costco on DeBarr Blockbuster Video

From MLP

ETHNICITY REPORT - OCTOBER 2005						
Caucasian	African American	AK Native/ American Indian	Asian/ Pac. Islander	Hispanic	Multi-Ethnic	Total
124 38.99%	28 8.81%	85 26.73%	19 5.97%	19 5.97%	43 13.52%	318 100.00%

From Fall Oasis

FULL ACADEMIC YEAR (FAY)		
Students Enrolled	Students Enrolled for FAY	Percent FAY
149	138	92.6%

From participation file (3-10 graders)

Anchorage School District
2005-2006 Adequate Yearly Progress

Nunaka Valley Elementary

AMO For Language Arts: 71.48%
AMO For Math: 57.61%

Meets AYP

Group	Participation Rate				"FAY"	Language Arts Performance				Math Performance			
	(A) Number Enrolled	(B) Number Tested	Participation Rate (%)	(C) Participation Rate Met		(D) Tested and Enrolled "FAY"	(E) Proficient on LA	(F) Percent Proficient on LA	(G) LA Target	(H) Met AMO for LA	(I) Proficient on Math	(J) Percent Proficient in Math	(K) Math Target
If there are 20 or fewer students enrolled, value is "N/A"													
All Students	149	148	99.3%	Yes	137	98	71.5%	62.5%	Yes	81	59.1%	47.8%	Yes
African American	15	15	N/A	N/A	N/A	N/A	N/A	N/A	N/A	N/A	N/A	N/A	N/A
AkNa & Amln	52	51	98.1%	Yes	44	26	59.1%	55.6%	Yes	20	45.5%	40.3%	Yes
Asian	9	9	N/A	N/A	N/A	N/A	N/A	N/A	N/A	N/A	N/A	N/A	N/A
Caucasian	56	56	100%	Yes	54	42	77.8%	57.2%	Yes	36	66.7%	41.9%	Yes
Hispanic	8	8	N/A	N/A	N/A	N/A	N/A	N/A	N/A	N/A	N/A	N/A	N/A
Multi-Ethnic	9	9	N/A	N/A	N/A	N/A	N/A	N/A	N/A	N/A	N/A	N/A	N/A
Low Income	88	88	100%	Yes	80	53	66.2%	59.7%	Yes	40	50%	44.7%	Yes
Disabled	32	31	96.9%	Yes	N/A	N/A	N/A	N/A	N/A	N/A	N/A	N/A	N/A
LEP	21	21	100%	Yes	N/A	N/A	N/A	N/A	N/A	N/A	N/A	N/A	N/A

Attendance Rate: 94.0% (Threshold is 85%)

N/A is used to indicate when a group does not need to be evaluated when:

- (1) 20 or fewer students are enrolled in a group for all groups except "All Students".
- (2) 40 or fewer students are enrolled FAY (column D) in the Disabled & LEP groups.

* For the groups where the number enrolled is fewer than or equal to 40, participation is met when no more than 2 miss the test. Groups can also meet this target using the average of the past two or three years.

** Where a group achieves a "Yes" without meeting the listed target, it has done so using either the 99% confidence interval or Safe Harbor.

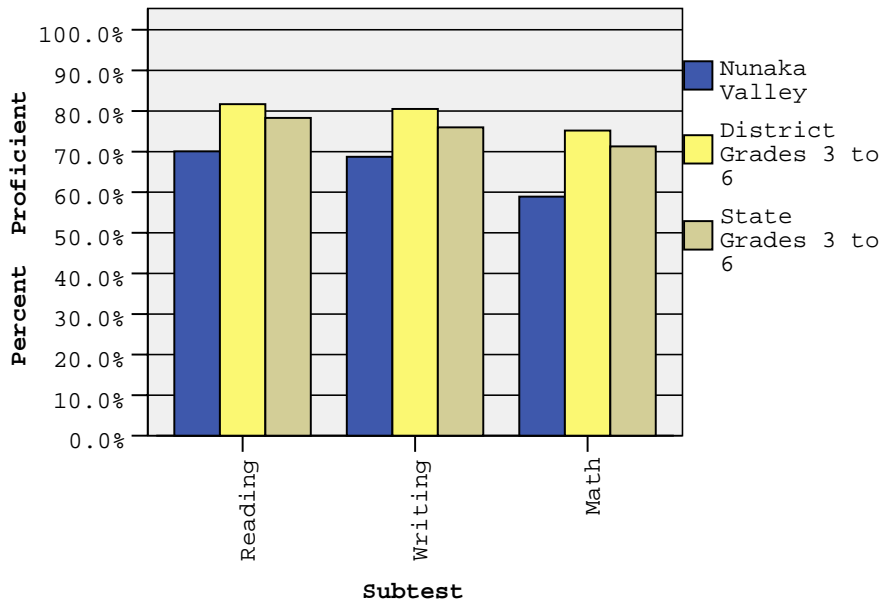
*** Results cannot be published without releasing personally identifiable information.

This document was prepared by the ASD Assessment and Evaluation 7/19/2006

Nunaka Valley Elementary School SBA Proficiency – Spring 2006

	Reading		Writing		Math	
	2005 Proficient	2006 Proficient	2005 Proficient	2006 Proficient	2005 Proficient	2006 Proficient
All Grades	72.8%	70.1%	62.5%	68.7%	50.0%	58.9%
3 rd Grade	71.9%	75.6%	56.3%	66.7%	50.0%	64.4%
4 th Grade	76.3%	67.7%	52.6%	80.6%	47.4%	51.6%
5 th Grade	75.6%	54.3%	73.2%	60.0%	53.7%	44.1%
6 th Grade	64.0%	80.6%	68.0%	69.4%	48.0%	72.2%

SBA Spring 2006 Proficiency Rate Comparison of School, District, and State *



* District and State Grades 3 to 6

Anchorage School District: Profile of Performance 2005-2006

Nunaka Valley SBA Proficiency by NCLB Groups – Spring 2006

		Reading		Writing		Math	
		Proficient	Not Proficient	Proficient	Not Proficient	Proficient	Not Proficient
Ethnicity	All Students	70.1%	29.9%	68.7%	31.3%	58.9%	41.1%
	African American	86.7%	13.3%	86.7%	13.3%	66.7%	33.3%
	AK Native/ American Indian	60.0%	40.0%	60.0%	40.0%	48.0%	52.0%
	Asian	88.9%	11.1%	88.9%	11.1%	62.5%	37.5%
	Caucasian	75.0%	25.0%	71.4%	28.6%	66.1%	33.9%
	Hispanic	75.0%	25.0%	62.5%	37.5%	75.0%	25.0%
	Multi-Ethnic	44.4%	55.6%	55.6%	44.4%	44.4%	55.6%
LowIncome	Yes	64.4%	35.6%	67.8%	32.2%	51.2%	48.8%
	No	78.3%	21.7%	70.0%	30.0%	70.0%	30.0%
Disabled	Yes	30.0%	70.0%	40.0%	60.0%	26.7%	73.3%
	No	80.3%	19.7%	76.1%	23.9%	67.2%	32.8%
LEP	Yes	66.7%	33.3%	76.2%	23.8%	45.0%	55.0%
	No	70.6%	29.4%	67.5%	32.5%	61.1%	38.9%
Migrant	Yes	44.4%	55.6%	44.4%	55.6%	44.4%	55.6%
	No	71.7%	28.3%	70.3%	29.7%	59.9%	40.1%
Gender	Female	83.8%	16.2%	82.4%	17.6%	66.2%	33.8%
	Male	56.2%	43.8%	54.8%	45.2%	51.4%	48.6%

Anchorage School District: Profile of Performance 2005-2006

Nunaka Valley SBA Mean Scale Score Comparison: 2004-2005 to 2005-2006

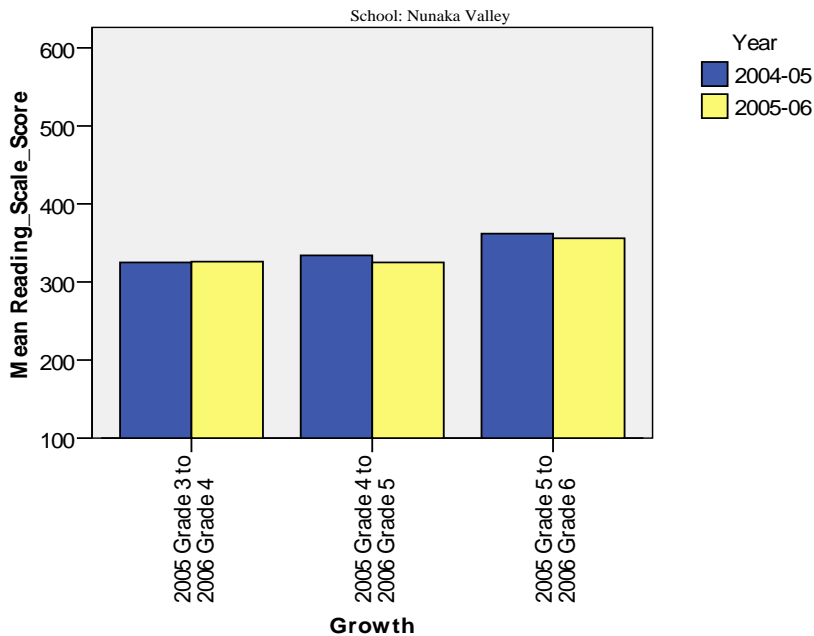
		Reading		Writing		Math	
		2004-2005 Mean Scale Score	2005-2006 Mean Scale Score	2004-2005 Mean Scale Score	2005-2006 Mean Scale Score	2004-2005 Mean Scale Score	2005-2006 Mean Scale Score
Ethnicity	All Students	337.9	341.6	325.0	336.0	299.9	320.0
	African American	330.8	370.7	304.9	357.3	283.0	338.5
	AK Native/ American Indian	328.7	322.5	312.5	320.0	293.7	294.7
	Asian	332.0	348.3	331.3	348.6	321.8	315.5
	Caucasian	358.9	354.1	341.5	345.9	311.1	339.5
	Hispanic	340.2	361.6	368.0	343.5	327.5	342.3
	Multi-Ethnic	292.6	296.3	304.4	308.7	255.1	292.6
Low Income	Yes	330.6	329.7	310.6	324.1	290.5	301.1
	No	345.8	358.8	340.7	353.3	310.3	347.1
Disabled	Yes	295.5	273.8	292.3	282.4	262.5	270.2
	No	348.8	358.9	333.5	349.8	309.6	332.9
LEP	Yes	310.2	318.1	315.7	331.5	294.2	295.0
	No	342.6	345.5	326.6	336.8	300.9	324.0
Migrant	Yes	309.1	305.3	298.7	293.2	286.7	287.1
	No	341.4	343.9	328.2	338.8	301.6	322.2
Gender	Female	355.6	357.5	354.0	355.4	307.8	327.2
	Male	322.5	325.4	300.0	316.4	293.1	312.6

Nunaka Valley SBA Growth in Average Scale Score by NCLB Groups: Reading

		Average Scale Score of Students Tested in District Both Years			Average Scale Score of Students Tested in District Both Years			Average Scale Score of Students Tested in District Both Years		
		Grade 3 in 2005	Grade 4 in 2006	Difference	Grade 4 in 2005	Grade 5 in 2006	Difference	Grade 5 in 2005	Grade 6 in 2006	Difference
Ethnicity	All Students	325.1	325.7	0.6	333.8	324.9	-8.9	361.7	356.3	-5.3
	African American	327.4	345.7	18.3	325.2	315.0	-10.2	369.1	353.7	-15.4
	AK Native/American Indian	305.9	305.1	-0.8	351.8	345.3	-6.5	387.4	377.7	-9.7
	Asian	368.0	362.4	-5.6	399.7	373.2	-26.5	319.9	292.1	-27.8
	Caucasian	327.8	332.9	5.1	361.7	348.3	-13.4	374.0	371.4	-2.6
	Hispanic	.	.	.	313.1	341.7	28.6	388.8	412.9	24.1
	Multi-Ethnic	319.3	312.8	-6.5	315.4	272.7	-42.7	221.2	272.0	50.8
LowIncome	Yes	323.7	327.2	3.5	320.9	315.1	-5.8	370.3	344.8	-25.5
	No	326.7	324.3	-2.3	363.0	350.4	-12.7	356.7	364.2	7.5
Disabled	Yes	278.1	267.7	-10.4	282.8	262.9	-19.9	319.7	302.3	-17.4
	No	351.4	353.7	2.3	348.2	343.0	-5.2	370.1	364.7	-5.4
LEP	Yes	350.9	342.1	-8.8	312.3	302.8	-9.5	320.4	291.7	-28.7
	No	317.0	321.4	4.4	338.7	330.2	-8.5	363.9	360.1	-3.8
Migrant	Yes	180.8	279.9	99.1	234.7	256.3	21.7	337.0	344.4	7.4
	No	331.2	329.0	-2.2	344.1	330.7	-13.4	363.8	357.9	-5.9
Gender	Female	344.3	335.8	-8.5	359.4	345.7	-13.7	389.2	370.0	-19.2
	Male	290.7	310.2	19.5	313.9	307.1	-6.8	352.3	349.8	-2.5

. No students tested in both years in this category

Measure of Growth in SBA Reading for Students Who Tested in 2005 and Again in 2006

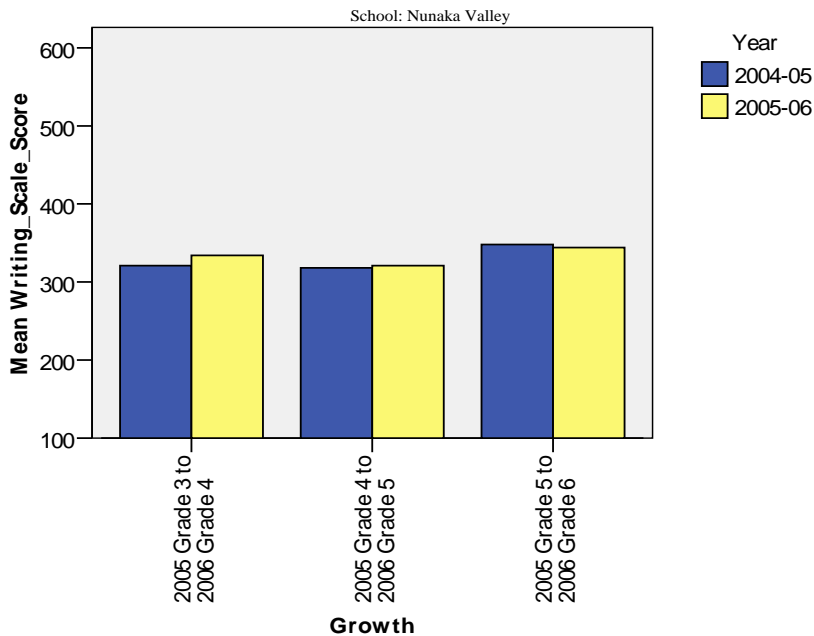


Nunaka Valley SBA Growth in Average Scale Score by NCLB Groups: Writing

		Average Scale Score of Students Tested in District Both Years			Average Scale Score of Students Tested in District Both Years			Average Scale Score of Students Tested in District Both Years		
		Grade 3 in 2005	Grade 4 in 2006	Difference	Grade 4 in 2005	Grade 5 in 2006	Difference	Grade 5 in 2005	Grade 6 in 2006	Difference
Ethnicity	All Students	320.8	333.9	13.1	317.7	321.3	3.7	348.0	344.4	-3.6
	African American	313.2	341.0	27.8	307.1	310.7	3.6	346.8	338.9	-7.9
	AK Native/ American Indian	300.3	319.8	19.5	294.4	331.2	36.8	374.2	376.0	1.8
	Asian	353.7	368.2	14.5	378.9	359.1	-19.8	322.3	313.8	-8.5
	Caucasian	325.7	330.3	4.7	332.0	339.4	7.4	354.7	356.2	1.5
	Hispanic	.	.	.	366.8	342.9	-23.9	387.7	361.3	-26.4
	Multi-Ethnic	351.4	356.7	5.3	312.2	286.0	-26.2	238.1	227.7	-10.4
LowIncome	Yes	318.9	335.1	16.2	302.3	304.8	2.5	353.4	343.7	-9.7
	No	325.0	331.4	6.4	354.7	362.2	7.5	344.9	344.1	-0.8
Disabled	Yes	285.8	273.9	-11.9	244.7	261.3	16.7	329.0	306.4	-22.7
	No	340.2	362.0	21.8	339.1	338.7	-0.4	351.8	349.9	-1.9
LEP	Yes	342.3	356.8	14.5	317.4	330.7	13.3	322.2	314.0	-8.2
	No	313.7	327.2	13.5	318.9	318.1	-0.8	349.3	345.8	-3.5
Migrant	Yes	279.7	297.3	17.7	231.0	263.4	32.4	328.7	296.2	-32.5
	No	322.1	335.7	13.6	326.8	325.9	-0.9	349.7	348.3	-1.3
Gender	Female	342.4	352.7	10.3	357.2	348.0	-9.2	378.1	369.7	-8.4
	Male	281.9	304.1	22.2	288.3	297.8	9.5	337.4	332.7	-4.7

. No students tested in both years in this category

Measure of Growth in SBA Writing for Students Who Tested in 2005 and Again in 2006

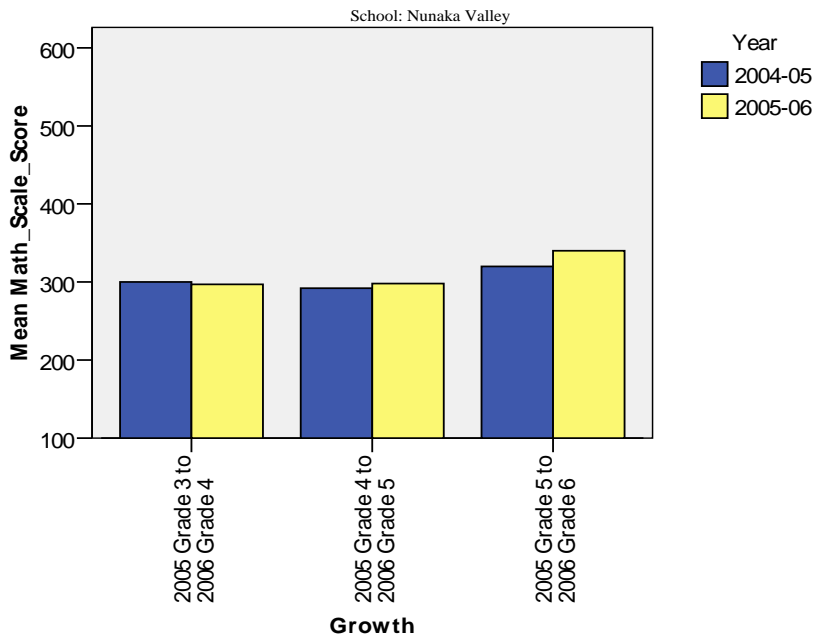


Nunaka Valley SBA Growth in Average Scale Score by NCLB Groups: Math

		Average Scale Score of Students Tested in District Both Years			Average Scale Score of Students Tested in District Both Years			Average Scale Score of Students Tested in District Both Years		
		Grade 3 in 2005	Grade 4 in 2006	Difference	Grade 4 in 2005	Grade 5 in 2006	Difference	Grade 5 in 2005	Grade 6 in 2006	Difference
Ethnicity	All Students	300.4	296.7	-3.7	292.2	298.0	5.8	320.1	339.7	19.6
	African American	311.9	281.1	-30.8	242.3	273.8	31.5	330.4	330.7	0.3
	AK Native/ American Indian	291.0	274.4	-16.7	306.2	329.2	23.0	318.9	350.1	31.2
	Asian	353.8	328.9	-24.9	355.7	260.3	-95.4	280.0	321.4	41.4
	Caucasian	292.2	318.0	25.8	298.1	318.7	20.6	334.8	352.9	18.1
	Hispanic	.	.	.	321.4	328.7	7.3	389.2	383.0	-6.2
	Multi-Ethnic	259.7	288.2	28.5	310.9	301.1	-9.8	242.3	260.8	18.5
LowIncome	Yes	302.7	289.3	-13.4	273.0	272.4	-0.6	312.7	339.2	26.5
	No	295.1	312.7	17.6	333.8	362.9	29.1	323.7	340.3	16.7
Disabled	Yes	259.4	264.7	5.3	222.2	245.0	22.8	290.1	317.7	27.6
	No	322.9	312.1	-10.8	311.3	314.8	3.5	326.4	342.7	16.3
LEP	Yes	333.0	317.4	-15.7	277.7	277.2	-0.5	279.9	321.1	41.2
	No	288.8	290.9	2.1	294.7	303.3	8.7	322.0	341.4	19.4
Migrant	Yes	212.2	263.0	50.8	250.1	235.7	-14.4	278.8	326.9	48.1
	No	303.3	298.8	-4.5	296.4	303.7	7.3	324.2	341.0	16.8
Gender	Female	312.7	306.2	-6.5	290.9	299.1	8.2	319.3	333.8	14.5
	Male	276.7	282.3	5.7	292.0	298.4	6.4	320.7	342.2	21.5

. No students tested in both years in this category

Measure of Growth in SBA Math for Students Who Tested in 2005 and Again in 2006



Anchorage School District: Profile of Performance 2005-2006

Nunaka Valley Grades 3-6 SBA Results Compared with District and State: Reading

Reading		% Advanced			% Proficient			% Below Proficient			% Far Below Proficient			Total Students Tested	Percent Tested		
		School	District	State	School	District	State	School	District	State	School	District	State	School	School	District	State
Ethnicity	All Students	21.1%	34.6%	31.2%	49.0%	47.1%	47.1%	17.7%	12.0%	14.1%	12.2%	6.3%	7.7%	149	99.3%	98.1%	98.1%
	African American	33.3%	20.7%	21.4%	53.3%	51.1%	52.9%	13.3%	18.9%	17.1%	0.0%	9.4%	8.6%	15	100.0%	98.2%	98.5%
	AK Native/ American Indian	20.0%	19.3%	12.4%	40.0%	49.7%	45.5%	18.0%	19.1%	25.7%	22.0%	11.9%	16.4%	52	98.1%	97.5%	97.7%
	Asian	11.1%	24.7%	27.4%	77.8%	49.6%	50.7%	11.1%	16.3%	14.8%	0.0%	9.4%	7.0%	9	100.0%	97.1%	97.5%
	Caucasian	23.2%	44.8%	41.6%	51.8%	44.3%	46.3%	16.1%	7.4%	8.2%	8.9%	3.5%	3.8%	56	100.0%	98.5%	98.3%
	Hispanic	25.0%	22.4%	22.4%	50.0%	51.8%	53.0%	25.0%	17.3%	17.3%	0.0%	8.5%	7.3%	8	100.0%	97.0%	97.2%
	Multi-Ethnic	0.0%	27.4%	28.2%	44.4%	50.5%	50.5%	33.3%	14.8%	13.9%	22.2%	7.4%	7.3%	9	100.0%	98.5%	98.7%
Low Income	Yes	13.8%	18.7%	17.4%	50.6%	51.0%	48.4%	19.5%	19.4%	21.3%	16.1%	11.0%	12.9%	88	100.0%	97.6%	97.9%
	No	31.7%	45.1%	41.4%	46.7%	44.5%	46.1%	15.0%	7.2%	8.6%	6.7%	3.3%	3.8%	61	98.4%	98.4%	98.2%
Disabled	Yes	6.7%	8.8%	8.1%	23.3%	36.7%	35.2%	23.3%	28.5%	29.9%	46.7%	26.1%	26.8%	32	96.9%	93.7%	94.0%
	No	24.8%	39.1%	34.9%	55.6%	48.9%	49.1%	16.2%	9.1%	11.4%	3.4%	2.9%	4.5%	117	100.0%	98.9%	98.8%
LEP	Yes	4.8%	15.1%	9.0%	61.9%	52.1%	43.7%	19.0%	20.5%	28.6%	14.3%	12.4%	18.7%	21	100.0%	96.7%	97.3%
	No	23.8%	38.3%	35.5%	46.8%	46.1%	47.8%	17.5%	10.4%	11.2%	11.9%	5.2%	5.6%	128	99.2%	98.3%	98.2%
Migrant	Yes	11.1%	20.0%	13.0%	33.3%	53.7%	44.6%	22.2%	17.1%	25.2%	33.3%	9.2%	17.2%	9	100.0%	99.4%	98.1%
	No	21.7%	35.1%	32.3%	50.0%	46.9%	47.3%	17.4%	11.8%	13.3%	10.9%	6.2%	7.1%	140	99.3%	98.0%	98.1%
Gender	Female	27.0%	39.3%	34.9%	56.8%	46.2%	47.0%	12.2%	10.0%	12.3%	4.1%	4.5%	5.8%	74	100.0%	98.5%	98.4%
	Male	15.1%	30.0%	27.5%	41.1%	47.9%	47.2%	23.3%	13.9%	15.7%	20.5%	8.1%	9.5%	75	98.7%	97.7%	97.7%

Anchorage School District: Profile of Performance 2005-2006

Nunaka Valley Grades 3-6 SBA Results Compared with District and State: Writing

Writing		% Advanced			% Proficient			% Below Proficient			% Far Below Proficient			Total Students Tested	Percent Tested		
		School	District	State	School	District	State	School	District	State	School	District	State	School	School	District	State
Ethnicity	All Students	15.0%	31.4%	27.4%	53.7%	49.1%	48.6%	28.6%	18.0%	21.9%	2.7%	1.6%	2.1%	149	99.3%	98.1%	98.1%
	African American	26.7%	18.0%	18.8%	60.0%	50.7%	52.0%	13.3%	29.2%	27.3%	0.0%	2.1%	1.9%	15	100.0%	98.2%	98.3%
	AK Native/ American Indian	8.0%	15.5%	10.5%	52.0%	52.5%	45.2%	38.0%	28.7%	39.6%	2.0%	3.2%	4.7%	52	98.1%	97.5%	97.9%
	Asian	0.0%	25.7%	27.6%	88.9%	49.8%	51.0%	11.1%	21.9%	19.3%	0.0%	2.6%	2.0%	9	100.0%	97.0%	97.5%
	Caucasian	21.4%	40.5%	36.3%	50.0%	47.1%	49.0%	25.0%	11.6%	13.7%	3.6%	0.8%	1.0%	56	100.0%	98.5%	98.2%
	Hispanic	12.5%	20.9%	20.2%	50.0%	52.7%	55.2%	37.5%	24.5%	23.1%	0.0%	1.8%	1.5%	8	100.0%	97.0%	97.2%
	Multi-Ethnic	11.1%	25.2%	25.6%	44.4%	51.2%	51.5%	33.3%	21.8%	21.0%	11.1%	1.9%	1.9%	9	100.0%	98.5%	98.6%
Low Income	Yes	8.0%	16.4%	15.3%	59.8%	52.2%	48.7%	28.7%	28.5%	32.4%	3.4%	2.9%	3.6%	88	100.0%	97.6%	98.0%
	No	25.0%	41.3%	36.5%	45.0%	47.0%	48.6%	28.3%	11.1%	13.9%	1.7%	0.7%	0.9%	61	98.4%	98.4%	98.1%
Disabled	Yes	6.7%	7.7%	6.4%	33.3%	40.2%	38.5%	50.0%	45.6%	47.9%	10.0%	6.5%	7.2%	32	96.9%	93.8%	94.2%
	No	17.1%	35.5%	30.9%	59.0%	50.6%	50.3%	23.1%	13.1%	17.6%	0.9%	0.7%	1.2%	117	100.0%	98.9%	98.7%
LEP	Yes	0.0%	14.9%	9.1%	76.2%	53.9%	45.1%	19.0%	28.3%	41.0%	4.8%	2.9%	4.8%	21	100.0%	96.6%	97.5%
	No	17.5%	34.6%	31.0%	50.0%	48.1%	49.3%	30.2%	16.0%	18.1%	2.4%	1.3%	1.5%	128	99.2%	98.3%	98.2%
Migrant	Yes	0.0%	20.2%	12.2%	44.4%	50.6%	43.4%	44.4%	26.5%	39.8%	11.1%	2.7%	4.5%	9	100.0%	99.4%	98.3%
	No	15.9%	31.8%	28.4%	54.3%	49.0%	49.0%	27.5%	17.7%	20.7%	2.2%	1.5%	1.9%	140	99.3%	98.0%	98.1%
Gender	Female	17.6%	37.8%	33.4%	64.9%	47.8%	47.9%	16.2%	13.5%	17.4%	1.4%	1.0%	1.3%	74	100.0%	98.4%	98.4%
	Male	12.3%	25.2%	21.7%	42.5%	50.3%	49.3%	41.1%	22.3%	26.2%	4.1%	2.2%	2.8%	75	98.7%	97.7%	97.7%

Anchorage School District: Profile of Performance 2005-2006

Nunaka Valley Grades 3-6 SBA Results Compared with District and State: Math

Math		% Advanced			% Proficient			% Below Proficient			% Far Below Proficient			Total Students Tested	Percent Tested		
		School	District	State	School	District	State	School	District	State	School	District	State	School	School	District	State
Ethnicity	All Students	21.2%	38.3%	32.9%	37.7%	37.0%	38.4%	19.9%	13.1%	14.7%	21.2%	11.7%	14.0%	149	99.3%	98.4%	98.2%
	African American	26.7%	19.2%	19.7%	40.0%	39.8%	40.5%	13.3%	18.2%	19.7%	20.0%	22.9%	20.0%	15	100.0%	98.2%	98.5%
	AK Native/ American Indian	8.0%	24.5%	16.3%	40.0%	40.1%	37.1%	18.0%	17.2%	21.4%	34.0%	18.1%	25.2%	52	98.1%	97.4%	97.7%
	Asian	12.5%	33.8%	35.2%	50.0%	37.3%	39.0%	37.5%	13.7%	13.5%	0.0%	15.2%	12.4%	9	100.0%	98.6%	98.8%
	Caucasian	32.1%	47.7%	41.6%	33.9%	35.1%	38.5%	17.9%	10.3%	11.2%	16.1%	6.9%	8.6%	56	100.0%	98.5%	98.3%
	Hispanic	37.5%	27.2%	26.4%	37.5%	39.1%	40.9%	25.0%	19.3%	18.3%	0.0%	14.5%	14.4%	8	100.0%	99.0%	98.7%
	Multi-Ethnic	11.1%	31.5%	32.1%	33.3%	39.6%	39.6%	33.3%	13.9%	13.6%	22.2%	15.0%	14.7%	9	100.0%	98.7%	98.8%
Low Income	Yes	15.1%	23.2%	20.5%	36.0%	39.3%	38.6%	20.9%	18.1%	19.3%	27.9%	19.4%	21.6%	88	100.0%	98.1%	98.1%
	No	30.0%	48.3%	42.1%	40.0%	35.4%	38.3%	18.3%	9.7%	11.2%	11.7%	6.6%	8.4%	61	98.4%	98.6%	98.3%
Disabled	Yes	10.0%	12.7%	11.0%	16.7%	29.6%	28.7%	16.7%	22.4%	22.6%	56.7%	35.3%	37.7%	32	96.9%	93.7%	94.1%
	No	24.1%	42.7%	36.5%	43.1%	38.2%	40.0%	20.7%	11.4%	13.4%	12.1%	7.6%	10.1%	117	100.0%	99.3%	98.9%
LEP	Yes	10.0%	23.6%	14.7%	35.0%	38.5%	35.1%	35.0%	18.1%	22.4%	20.0%	19.8%	27.8%	21	100.0%	98.8%	98.3%
	No	23.0%	41.2%	36.5%	38.1%	36.7%	39.1%	17.5%	12.1%	13.1%	21.4%	10.1%	11.3%	128	99.2%	98.3%	98.2%
Migrant	Yes	11.1%	25.7%	18.7%	33.3%	38.4%	35.1%	0.0%	17.6%	20.1%	55.6%	18.4%	26.1%	9	100.0%	99.4%	98.1%
	No	21.9%	38.7%	33.8%	38.0%	36.9%	38.7%	21.2%	12.9%	14.3%	19.0%	11.4%	13.2%	140	99.3%	98.4%	98.2%
Gender	Female	20.3%	38.1%	33.0%	45.9%	37.8%	39.2%	17.6%	13.3%	14.8%	16.2%	10.9%	13.1%	74	100.0%	98.7%	98.5%
	Male	22.2%	38.5%	32.8%	29.2%	36.2%	37.7%	22.2%	12.9%	14.6%	26.4%	12.5%	14.9%	75	98.7%	98.1%	97.9%

Nunaka Valley TerraNova 5th grade

Percent in each quartile

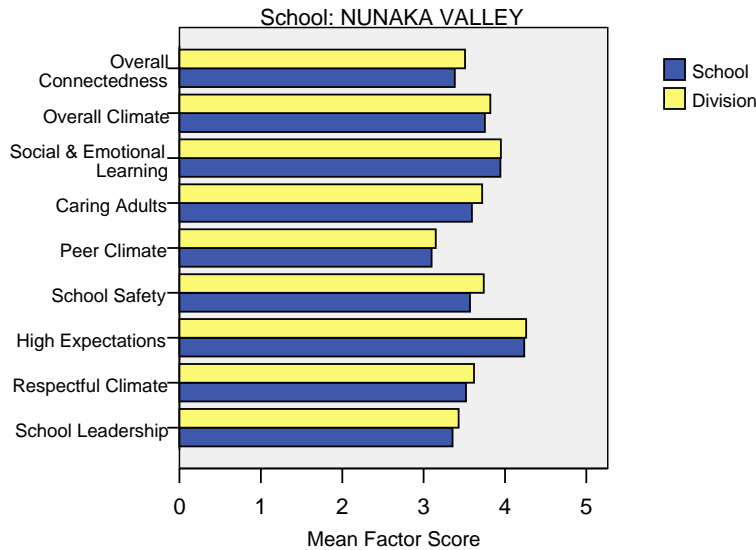
Reading	Above Average		Average				Below Average	
	4th Quartile (76-99 percentile)		3rd Quartile (51-75 percentile)		2nd Quartile (26-50 percentile)		1st Quartile (1-25 percentile)	
	School	District	School	District	School	District	School	District
2005-2006	13.9%	30.4%	13.9%	26.8%	33.3%	24.5%	38.9%	18.3%
2004-2005	22.5%	29.2%	17.5%	27.6%	35.0%	24.5%	25.0%	18.7%
2003-2004	17.1%	30.6%	20.0%	26.9%	34.3%	24.2%	28.6%	18.3%
2002-2003	18.4%	29.1%	26.3%	26.6%	34.2%	23.8%	21.1%	20.5%
2001-2002	14.0%	30.3%	25.6%	26.0%	34.9%	24.6%	25.6%	19.0%

Language	Above Average		Average				Below Average	
	4th Quartile (76-99 percentile)		3rd Quartile (51-75 percentile)		2nd Quartile (26-50 percentile)		1st Quartile (1-25 percentile)	
	School	District	School	District	School	District	School	District
2005-2006	13.9%	34.0%	25.0%	26.5%	25.0%	22.0%	36.1%	17.5%
2004-2005	27.5%	32.1%	17.5%	28.3%	32.5%	21.2%	22.5%	18.4%
2003-2004	17.1%	34.1%	22.9%	26.5%	31.4%	21.7%	28.6%	17.7%
2002-2003	28.9%	32.8%	18.4%	26.5%	26.3%	20.9%	26.3%	19.8%
2001-2002	18.6%	32.3%	30.2%	26.4%	23.3%	22.9%	27.9%	18.4%

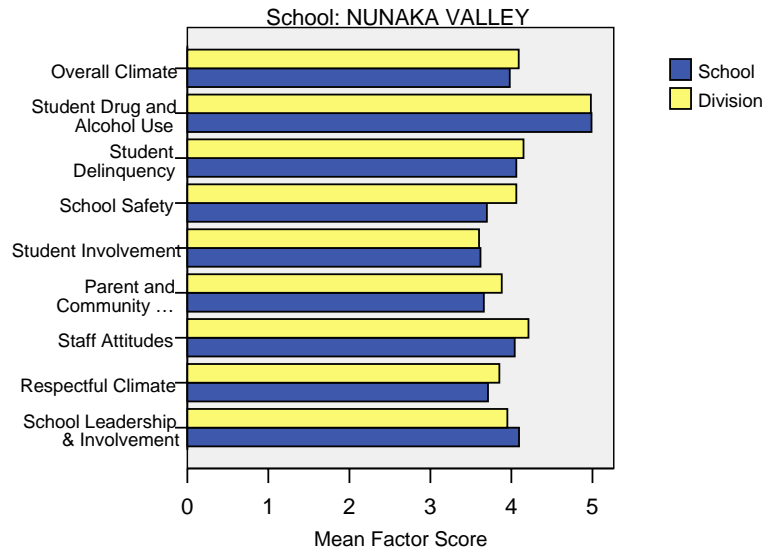
Math	Above Average		Average				Below Average	
	4th Quartile (76-99 percentile)		3rd Quartile (51-75 percentile)		2nd Quartile (26-50 percentile)		1st Quartile (1-25 percentile)	
	School	District	School	District	School	District	School	District
2005-2006	2.8%	28.4%	27.8%	31.9%	22.2%	22.3%	47.2%	17.5%
2004-2005	12.5%	26.9%	22.5%	31.1%	32.5%	22.9%	32.5%	19.1%
2003-2004	20.0%	28.3%	14.3%	29.3%	34.3%	22.6%	31.4%	19.8%
2002-2003	21.1%	24.7%	10.5%	30.6%	28.9%	22.6%	39.5%	22.1%
2001-2002	9.3%	24.1%	14.0%	30.1%	34.9%	24.8%	41.9%	20.9%

Nunaka Valley School Climate Survey Results

2006 Student Climate Survey Results



2006 Staff Climate Survey Results



The factors measured in the Student and Staff Climate Survey were:

- **Overall Connectedness – Student Survey:** The Overall Connectedness score for the student survey was computed as an average of three scales: Respectful Climate, Peer Climate, and Caring Adults.
- **Overall Climate – Student Survey:** The Overall Climate score for the student survey was computed as the average of three scales: School Leadership, High Expectations, and School Safety.
- **Overall Climate – Staff Survey:** The Overall Climate score for the staff survey was computed as the average of 6 scales: School Leadership, Respectful Climate, Staff Attitudes, Parent and Community Involvement, Student Involvement, School Safety, Student Delinquency, and Drug and Alcohol Use scores.
- **School Leadership:** Reflects feelings about the decision making of school leaders, fairness of school rules, and student participation in school governance. 1 indicates a low level of school leadership and 5 indicates a high level of school leadership.
- **Respectful Climate:** Fairness of rules and how well students and staff treat one another. 1 indicates a lack of respect and 5 indicates a highly respectful climate.
- **High Expectations:** Expectations of students from peers and adults. 1 indicates a lack of high expectations and 5 indicates very high expectations.

- **School Safety:** Presence of school bullies, gangs and general crime and violence in the community. 1 indicates a low level of safety and 5 indicates a high level of safety.
- **Peer Climate:** Reflects feelings about how respectful and helpful students are to one another. 1 indicates a negative peer climate and 5 indicates a very positive climate.
- **Caring Adults:** Reflects the caring adult relationships students have in the school. 1 indicates a lack of caring relationships and 5 indicates a high number of caring adults.
- **Social & Emotional Learning:** Reflects students' ability to think about the consequences of their actions and to empathize with others. 1 indicates poor social and emotional learning and 5 indicates higher levels of social and emotional learning.
- **Staff Attitudes:** Reflects feelings about competence and attitude towards jobs. 1 indicates more negative attitudes and 5 indicates highly positive attitudes.
- **Parent and Community Involvement:** Accessibility of the school for parents and how connected adults in the community are to the school. 1 indicates a low level of parent and community involvement and 5 indicates a high level of parent and community involvement.
- **Student Involvement:** Reflects feelings about how involved students are in the schools' decision making process. 1 indicates a low level of student involvement and 5 indicates a high level of student involvement.
- **Student Delinquency:** Reflects staff members' reports of witnessed student fights, stealing, and bullying. 1 indicates a high level of delinquency and 5 indicates a low level (5 is most desired).
- **Student Drug and Alcohol Use:** Reflects staff members' reports of observing students under the influence of drugs or alcohol. 1 indicates a high level of drug and alcohol use and 5 indicates a low level (5 is most desired).