

Table 52

Trailside School Overview

Statement of Program
Trailside Elementary is an urban school in southeast Anchorage, serving 514 students in 22 traditional classrooms. In addition to 22 classroom teachers, Trailside has one full-time nurse, librarian, PE teacher, music teacher, 2.5 special education teachers, .5 art teacher and an itinerant speech/language and physical therapy/occupational therapy teacher.

From the Report Card/MLP

SCHOOL GOALS	
Goal	Level of Achievement
Improve math proficiency and raise the percentage of students who are proficient on the state assessment in the area of mathematics from 82.4% to 85%.	Partially Attained
Improve reading proficiency and raise the percentage of students who are proficient on the state assessment in the area of reading from 91.4% to 95%.	Attained

From the School Report Card

BUDGET*	
2004-2005 Actual Expenditures	\$2,240,185
2005-2006 Revised Budgeted Amount	\$2,350,024
2006-2007 Proposed Budget	\$2,578,517
*Dollars budgeted or expended are general fund only.	

From IFAS

	School	District	Source of Information
Membership	527	50,051	Fall OASIS
Capacity	99%	N/A	Board Report - #189 3/7/06
Attendance Rate	95%	93%	SMS end of year report
Retention Rate	0.6%	1.2%	Report Card File
Transiency Rate	12.26%	22.72%	Report Card File
Economically Disadvantaged	116	16,769	Fall OASIS
Ave. Weekly Volunteer Hours	220	5,032	Report Card File
Students Taking an Alternate Assessment	2	264	SMS
Change in Enrollment	5.0%	0.3%	Report Card File

Trailside School Characteristics

Teacher Qualification				
# of teachers	% fully licensed	% with advanced degrees	# Nationally Board Certified	% of classes taught by "highly qualified teachers"
29	100%	38%	0	80%

SCHOOL BUSINESS PARTNERSHIPS
None listed

From MLP

ETHNICITY REPORT - OCTOBER 2005						
Caucasian	African American	AK Native/ American Indian	Asian/ Pac. Islander	Hispanic	Multi-Ethnic	Total
329	21	49	54	15	59	527
62.43%	3.98%	9.30%	10.25%	2.85%	11.20%	100.00%

From Fall Oasis

FULL ACADEMIC YEAR (FAY)		
Students Enrolled	Students Enrolled for FAY	Percent FAY
305	293	96.1%

From participation file (3-10 graders)

**Anchorage School District
2005-2006 Adequate Yearly Progress**

Trailside Elementary

**AMO For Language Arts: 71.48%
AMO For Math: 57.61%**

Meets AYP

Group	Participation Rate				"FAY"	Language Arts Performance				Math Performance			
	(A) Number Enrolled	(B) Number Tested	Participation Rate (%)	(C) Participation Rate Met		(D) Tested and Enrolled "FAY"	(E) Proficient on LA	(F) Percent Proficient on LA	(G) LA Target	(H) Met AMO for LA	(I) Proficient on Math	(J) Percent Proficient in Math	(K) Math Target
If there are 20 or fewer students enrolled, value is "N/A"													
All Students	305	304	99.7%	Yes	292	268	91.8%	65.3%	Yes	249	85.3%	50.9%	Yes
African American	9	8	N/A	N/A	N/A	N/A	N/A	N/A	N/A	N/A	N/A	N/A	N/A
AkNa & Amln	34	34	100%	Yes	32	26	81.2%	52.9%	Yes	26	81.2%	37.3%	Yes
Asian	32	32	100%	Yes	32	***	≥ 90%	***	Yes	29	90.6%	37.3%	Yes
Caucasian	189	189	100%	Yes	180	168	93.3%	63.6%	Yes	154	85.6%	49%	Yes
Hispanic	7	7	N/A	N/A	N/A	N/A	N/A	N/A	N/A	N/A	N/A	N/A	N/A
Multi-Ethnic	34	34	100%	Yes	34	31	91.2%	53.4%	Yes	30	88.2%	37.9%	Yes
Low Income	60	60	100%	Yes	57	50	87.7%	57.5%	Yes	49	86%	42.4%	Yes
Disabled	37	36	97.3%	Yes	N/A	N/A	N/A	N/A	N/A	N/A	N/A	N/A	N/A
LEP	24	24	100%	Yes	N/A	N/A	N/A	N/A	N/A	N/A	N/A	N/A	N/A

Attendance Rate: 94.6% (Threshold is 85%)

N/A is used to indicate when a group does not need to be evaluated when:

(1) 20 or fewer students are enrolled in a group for all groups except "All Students".

(2) 40 or fewer students are enrolled FAY (column D) in the Disabled & LEP groups.

* For the groups where the number enrolled is fewer than or equal to 40, participation is met when no more than 2 miss the test. Groups can also meet this target using the average of the past two or three years.

** Where a group achieves a "Yes" without meeting the listed target, it has done so using either the 99% confidence interval or Safe Harbor.

*** Results cannot be published without releasing personally identifiable information.

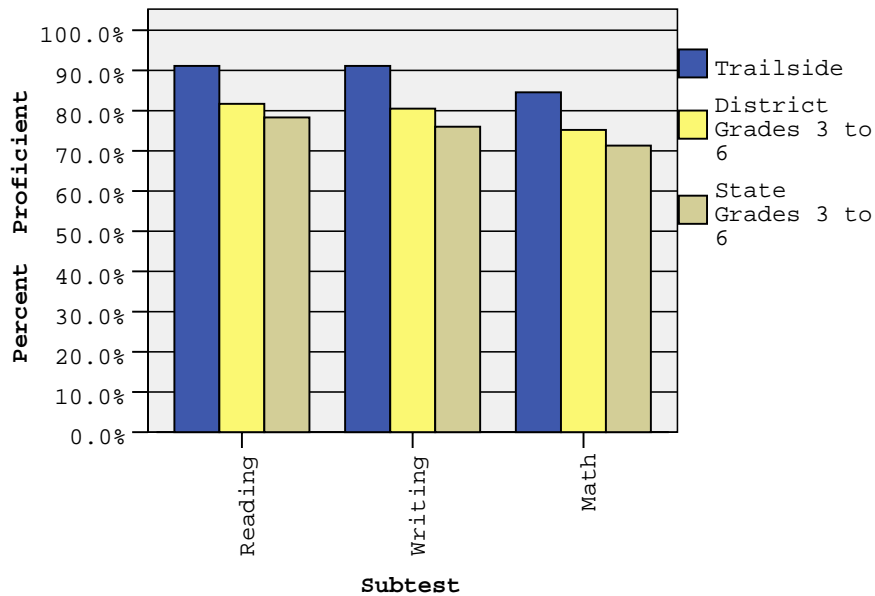
This document was prepared by the ASD Assessment and Evaluation

7/19/2006

Trailside Elementary School SBA Proficiency – Spring 2006

	Reading		Writing		Math	
	2005 Proficient	2006 Proficient	2005 Proficient	2006 Proficient	2005 Proficient	2006 Proficient
All Grades	91.3%	91.1%	88.9%	91.1%	82.8%	84.5%
3 rd Grade	91.5%	92.3%	90.1%	89.2%	88.9%	86.2%
4 th Grade	94.1%	93.2%	94.1%	94.5%	86.8%	86.3%
5 th Grade	93.3%	91.4%	85.6%	92.9%	81.3%	90.0%
6 th Grade	84.7%	88.5%	86.4%	88.5%	72.9%	78.1%

SBA Spring 2006 Proficiency Rate Comparison of School, District, and State *



* District and State Grades 3 to 6

Anchorage School District: Profile of Performance 2005-2006
Trailside SBA Proficiency by NCLB Groups – Spring 2006

		Reading		Writing		Math	
		Proficient	Not Proficient	Proficient	Not Proficient	Proficient	Not Proficient
Ethnicity	All Students	91.1%	8.9%	91.1%	8.9%	84.5%	15.5%
	African American	87.5%	12.5%	87.5%	12.5%	62.5%	37.5%
	AK Native/ American Indian	79.4%	20.6%	82.4%	17.6%	79.4%	20.6%
	Asian	96.9%	3.1%	93.8%	6.3%	90.6%	9.4%
	Caucasian	92.6%	7.4%	92.6%	7.4%	84.7%	15.3%
	Hispanic	85.7%	14.3%	85.7%	14.3%	85.7%	14.3%
	Multi-Ethnic	91.2%	8.8%	91.2%	8.8%	88.2%	11.8%
LowIncome	Yes	86.7%	13.3%	86.7%	13.3%	85.0%	15.0%
	No	92.2%	7.8%	92.2%	7.8%	84.4%	15.6%
Disabled	Yes	61.1%	38.9%	63.9%	36.1%	50.0%	50.0%
	No	95.1%	4.9%	94.8%	5.2%	89.2%	10.8%
LEP	Yes	91.7%	8.3%	91.7%	8.3%	87.5%	12.5%
	No	91.1%	8.9%	91.1%	8.9%	84.3%	15.7%
Migrant	Yes	100.0%	0.0%	100.0%	0.0%	100.0%	0.0%
	No	91.0%	9.0%	91.0%	9.0%	84.3%	15.7%
Gender	Female	94.1%	5.9%	93.3%	6.7%	83.0%	17.0%
	Male	88.8%	11.2%	89.3%	10.7%	85.8%	14.2%

Anchorage School District: Profile of Performance 2005-2006

Trailside SBA Mean Scale Score Comparison: 2004-2005 to 2005-2006

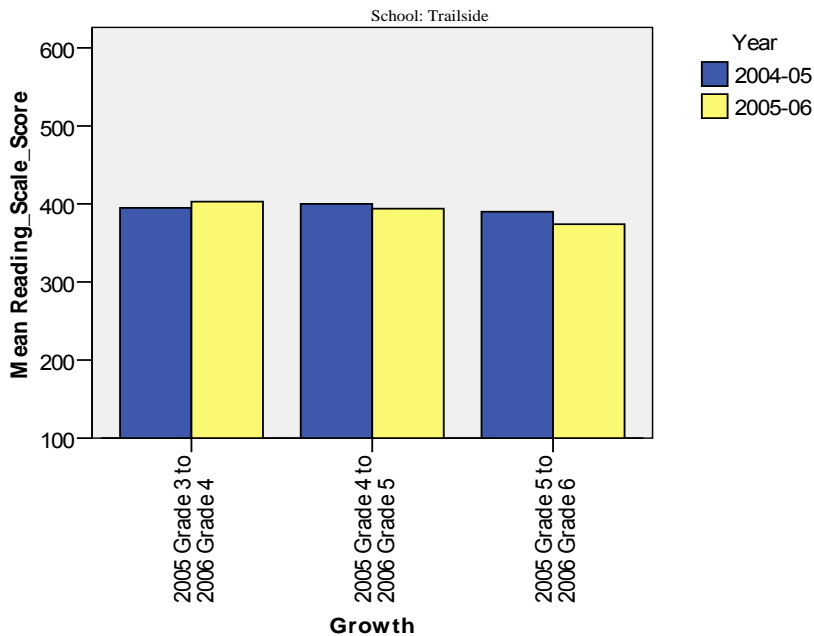
		Reading		Writing		Math	
		2004-2005 Mean Scale Score	2005-2006 Mean Scale Score	2004-2005 Mean Scale Score	2005-2006 Mean Scale Score	2004-2005 Mean Scale Score	2005-2006 Mean Scale Score
Ethnicity	All Students	391.2	387.5	384.1	384.4	369.2	366.2
	African American	350.0	383.9	359.3	370.9	333.3	348.1
	AK Native/ American Indian	345.3	353.4	335.8	347.3	317.5	340.3
	Asian	398.0	392.4	389.2	399.6	385.7	375.4
	Caucasian	400.0	393.6	392.1	390.3	376.3	370.7
	Hispanic	372.7	364.7	373.0	348.1	370.7	352.4
	Multi-Ethnic	389.1	388.6	387.1	385.4	372.7	365.9
Low Income	Yes	373.6	368.2	367.1	360.7	357.7	355.6
	No	394.4	392.2	387.3	390.3	371.4	368.9
Disabled	Yes	319.0	312.5	335.2	325.5	306.5	310.9
	No	403.1	397.6	392.3	392.3	379.6	373.7
LEP	Yes	365.6	369.8	369.7	376.3	360.5	367.6
	No	393.1	389.0	385.2	385.1	370.0	366.1
Migrant	Yes	422.3	407.5	399.0	426.8	430.0	383.8
	No	390.8	387.2	384.0	383.9	368.6	366.0
Gender	Female	396.9	396.8	393.1	395.7	361.9	361.3
	Male	386.2	380.1	376.5	375.4	375.4	370.2

Trailside SBA Growth in Average Scale Score by NCLB Groups: Reading

		Average Scale Score of Students Tested in District Both Years			Average Scale Score of Students Tested in District Both Years			Average Scale Score of Students Tested in District Both Years		
		Grade 3 in 2005	Grade 4 in 2006	Difference	Grade 4 in 2005	Grade 5 in 2006	Difference	Grade 5 in 2005	Grade 6 in 2006	Difference
Ethnicity	All Students	395.1	402.7	7.6	399.8	393.9	-5.9	389.7	374.3	-15.4
	African American	306.4	325.7	19.3	492.2	487.0	-5.2	437.1	421.7	-15.4
	AK Native/ American Indian	319.9	324.1	4.2	349.3	365.8	16.5	382.4	353.7	-28.7
	Asian	382.0	408.4	26.4	380.7	383.2	2.5	411.9	403.1	-8.8
	Caucasian	409.8	418.9	9.1	414.7	405.3	-9.3	388.0	370.4	-17.7
	Hispanic	.	478.0	.	341.1	274.7	-66.4	388.8	350.9	-37.9
	Multi-Ethnic	394.3	405.8	11.5	374.4	372.7	-1.7	392.2	389.0	-3.2
LowIncome	Yes	360.7	368.2	7.5	353.9	357.1	3.2	386.3	366.8	-19.5
	No	402.7	413.3	10.7	407.0	399.4	-7.6	390.7	377.2	-13.5
Disabled	Yes	294.1	300.7	6.6	317.8	304.9	-12.9	313.7	302.3	-11.4
	No	403.4	412.7	9.3	412.2	405.0	-7.2	402.1	385.7	-16.4
LEP	Yes	399.9	357.1	-42.8	371.3	380.8	9.5	391.4	395.7	4.3
	No	395.0	407.4	12.4	403.7	395.2	-8.5	389.9	373.1	-16.8
Migrant	Yes	.	.	.	412.7	436.3	23.7	427.0	393.4	-33.7
	No	395.2	403.0	7.8	400.1	392.7	-7.4	388.8	373.9	-14.9
Gender	Female	393.3	393.8	0.5	413.4	403.7	-9.7	403.2	390.0	-13.2
	Male	396.7	412.2	15.5	390.9	386.1	-4.8	376.3	359.8	-16.5

. No students tested in both years in this category

Measure of Growth in SBA Reading for Students Who Tested in 2005 and Again in 2006

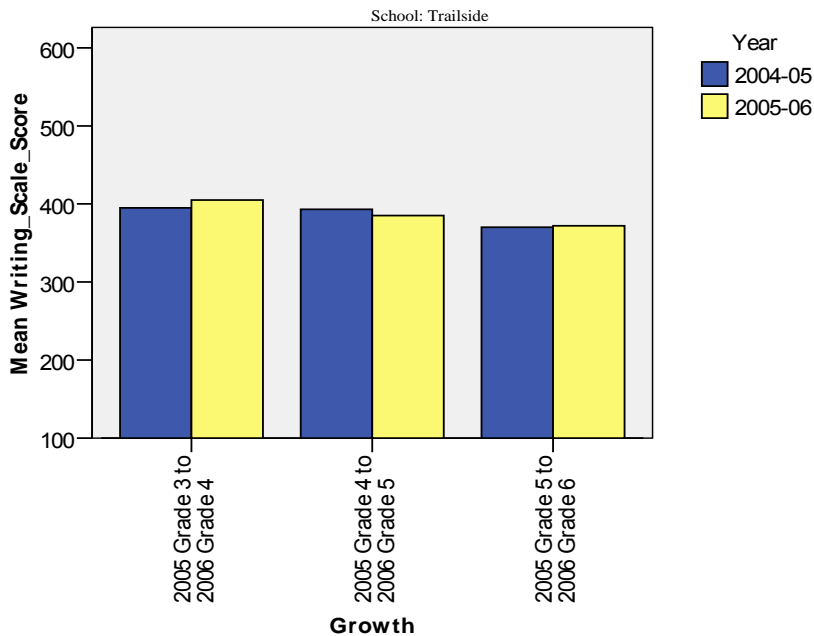


Trailside SBA Growth in Average Scale Score by NCLB Groups: Writing

		Average Scale Score of Students Tested in District Both Years			Average Scale Score of Students Tested in District Both Years			Average Scale Score of Students Tested in District Both Years		
		Grade 3 in 2005	Grade 4 in 2006	Difference	Grade 4 in 2005	Grade 5 in 2006	Difference	Grade 5 in 2005	Grade 6 in 2006	Difference
Ethnicity	All Students	394.8	404.9	10.1	392.7	385.3	-7.3	370.0	372.4	2.4
	African American	311.2	351.0	39.8	468.1	431.7	-36.4	425.8	413.9	-11.9
	AK Native/American Indian	314.3	341.8	27.5	323.4	341.7	18.3	347.2	350.5	3.3
	Asian	401.7	441.2	39.5	369.9	368.1	-1.8	398.3	402.8	4.5
	Caucasian	410.7	415.3	4.7	405.0	398.4	-6.6	369.7	367.2	-2.5
	Hispanic	.	437.7	.	348.8	266.9	-81.9	387.7	368.3	-19.4
	Multi-Ethnic	389.4	397.7	8.3	388.2	369.0	-19.2	377.1	389.7	12.6
LowIncome	Yes	368.9	352.1	-16.8	369.3	343.8	-25.5	354.4	362.7	8.3
	No	402.0	419.4	17.4	396.7	391.2	-5.5	375.9	374.1	-1.8
Disabled	Yes	327.8	307.9	-19.9	328.7	332.3	3.7	311.0	315.4	4.4
	No	401.2	413.0	11.8	401.1	390.7	-10.4	379.8	379.9	0.1
LEP	Yes	388.3	382.8	-5.5	370.4	380.7	10.3	396.2	397.0	0.8
	No	395.7	406.2	10.5	395.9	385.1	-10.8	369.3	369.8	0.5
Migrant	Yes	.	.	.	399.0	422.4	23.4	398.7	423.2	24.5
	No	395.1	404.7	9.6	392.8	383.9	-8.9	369.7	370.3	0.7
Gender	Female	395.4	404.7	9.3	412.2	393.0	-19.2	385.1	390.7	5.6
	Male	395.9	404.1	8.2	379.3	378.8	-0.5	355.4	352.7	-2.7

. No students tested in both years in this category

Measure of Growth in SBA Writing for Students Who Tested in 2005 and Again in 2006

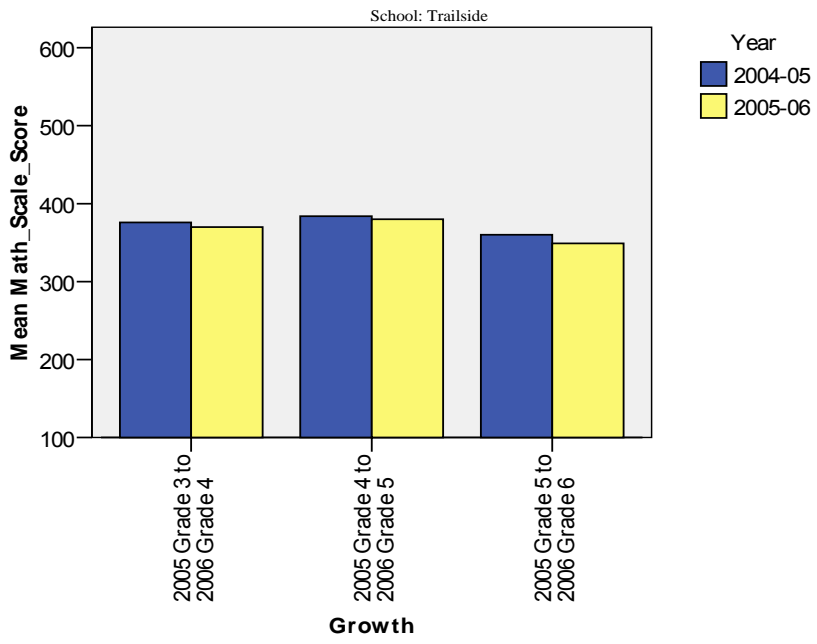


Trailside SBA Growth in Average Scale Score by NCLB Groups: Math

		Average Scale Score of Students Tested in District Both Years			Average Scale Score of Students Tested in District Both Years			Average Scale Score of Students Tested in District Both Years		
		Grade 3 in 2005	Grade 4 in 2006	Difference	Grade 4 in 2005	Grade 5 in 2006	Difference	Grade 5 in 2005	Grade 6 in 2006	Difference
Ethnicity	All Students	375.8	369.9	-5.9	383.7	380.3	-3.3	360.0	349.4	-10.7
	African American	250.2	294.0	43.8	534.1	443.7	-90.4	372.8	385.9	13.1
	AK Native/ American Indian	306.3	305.8	-0.5	348.4	349.7	1.3	328.7	327.0	-1.7
	Asian	369.7	367.2	-2.5	384.9	365.1	-19.8	381.3	380.8	-0.5
	Caucasian	390.7	384.3	-6.3	386.0	394.4	8.4	364.7	343.2	-21.5
	Hispanic	.	428.7	.	346.8	277.9	-68.9	412.7	365.3	-47.4
	Multi-Ethnic	384.4	374.7	-9.7	380.2	348.0	-32.2	345.1	360.7	15.6
LowIncome	Yes	367.9	334.1	-33.8	357.3	360.8	3.5	361.4	347.7	-13.7
	No	379.0	380.4	1.4	387.7	383.2	-4.5	359.9	349.1	-10.8
Disabled	Yes	316.8	298.9	-17.9	322.7	321.3	-1.3	284.0	289.4	5.4
	No	381.2	377.0	-4.2	392.1	387.7	-4.4	372.8	357.9	-14.9
LEP	Yes	366.3	338.8	-27.5	392.4	370.7	-21.7	364.2	356.0	-8.2
	No	376.7	373.2	-3.5	382.9	381.1	-1.8	360.3	347.8	-12.5
Migrant	Yes	.	.	.	429.0	347.4	-81.7	430.7	393.2	-37.5
	No	376.1	369.7	-6.4	382.8	380.9	-1.9	358.7	348.3	-10.4
Gender	Female	361.4	351.7	-9.7	369.2	381.0	11.8	361.1	350.7	-10.4
	Male	390.9	387.1	-3.8	395.3	379.8	-15.5	360.4	345.7	-14.7

. No students tested in both years in this category

Measure of Growth in SBA Math for Students Who Tested in 2005 and Again in 2006



Anchorage School District: Profile of Performance 2005-2006

Trailside Grades 3-6 SBA Results Compared with District and State: Reading

Reading		% Advanced			% Proficient			% Below Proficient			% Far Below Proficient			Total Students Tested	Percent Tested		
		School	District	State	School	District	State	School	District	State	School	District	State	School	School	District	State
Ethnicity	All Students	39.5%	34.6%	31.2%	51.6%	47.1%	47.1%	5.3%	12.0%	14.1%	3.6%	6.3%	7.7%	305	99.7%	98.1%	98.1%
	African American	50.0%	20.7%	21.4%	37.5%	51.1%	52.9%	12.5%	18.9%	17.1%	0.0%	9.4%	8.6%	9	88.9%	98.2%	98.5%
	AK Native/ American Indian	26.5%	19.3%	12.4%	52.9%	49.7%	45.5%	11.8%	19.1%	25.7%	8.8%	11.9%	16.4%	34	100.0%	97.5%	97.7%
	Asian	34.4%	24.7%	27.4%	62.5%	49.6%	50.7%	3.1%	16.3%	14.8%	0.0%	9.4%	7.0%	32	100.0%	97.1%	97.5%
	Caucasian	42.9%	44.8%	41.6%	49.7%	44.3%	46.3%	4.2%	7.4%	8.2%	3.2%	3.5%	3.8%	189	100.0%	98.5%	98.3%
	Hispanic	28.6%	22.4%	22.4%	57.1%	51.8%	53.0%	0.0%	17.3%	17.3%	14.3%	8.5%	7.3%	7	100.0%	97.0%	97.2%
	Multi-Ethnic	38.2%	27.4%	28.2%	52.9%	50.5%	50.5%	5.9%	14.8%	13.9%	2.9%	7.4%	7.3%	34	100.0%	98.5%	98.7%
Low Income	Yes	25.0%	18.7%	17.4%	61.7%	51.0%	48.4%	10.0%	19.4%	21.3%	3.3%	11.0%	12.9%	60	100.0%	97.6%	97.9%
	No	43.0%	45.1%	41.4%	49.2%	44.5%	46.1%	4.1%	7.2%	8.6%	3.7%	3.3%	3.8%	245	99.6%	98.4%	98.2%
Disabled	Yes	8.3%	8.8%	8.1%	52.8%	36.7%	35.2%	19.4%	28.5%	29.9%	19.4%	26.1%	26.8%	37	97.3%	93.7%	94.0%
	No	43.7%	39.1%	34.9%	51.5%	48.9%	49.1%	3.4%	9.1%	11.4%	1.5%	2.9%	4.5%	268	100.0%	98.9%	98.8%
LEP	Yes	25.0%	15.1%	9.0%	66.7%	52.1%	43.7%	8.3%	20.5%	28.6%	0.0%	12.4%	18.7%	24	100.0%	96.7%	97.3%
	No	40.7%	38.3%	35.5%	50.4%	46.1%	47.8%	5.0%	10.4%	11.2%	3.9%	5.2%	5.6%	281	99.6%	98.3%	98.2%
Migrant	Yes	*	20.0%	13.0%	*	53.7%	44.6%	*	17.1%	25.2%	*	9.2%	17.2%	*	100.0%	99.4%	98.1%
	No	39.0%	35.1%	32.3%	52.0%	46.9%	47.3%	5.3%	11.8%	13.3%	3.7%	6.2%	7.1%	301	99.7%	98.0%	98.1%
Gender	Female	45.9%	39.3%	34.9%	48.1%	46.2%	47.0%	3.7%	10.0%	12.3%	2.2%	4.5%	5.8%	136	99.3%	98.5%	98.4%
	Male	34.3%	30.0%	27.5%	54.4%	47.9%	47.2%	6.5%	13.9%	15.7%	4.7%	8.1%	9.5%	169	100.0%	97.7%	97.7%

*The total number of students tested in this category is fewer than 5. Results cannot be reported according to the state's protocol for reporting results.

Anchorage School District: Profile of Performance 2005-2006

Trailside Grades 3-6 SBA Results Compared with District and State: Writing

Writing		% Advanced			% Proficient			% Below Proficient			% Far Below Proficient			Total Students Tested	Percent Tested		
		School	District	State	School	District	State	School	District	State	School	District	State	School	School	District	State
Ethnicity	All Students	37.2%	31.4%	27.4%	53.9%	49.1%	48.6%	8.2%	18.0%	21.9%	0.7%	1.6%	2.1%	305	99.7%	98.1%	98.1%
	African American	37.5%	18.0%	18.8%	50.0%	50.7%	52.0%	12.5%	29.2%	27.3%	0.0%	2.1%	1.9%	9	88.9%	98.2%	98.3%
	AK Native/ American Indian	17.6%	15.5%	10.5%	64.7%	52.5%	45.2%	14.7%	28.7%	39.6%	2.9%	3.2%	4.7%	34	100.0%	97.5%	97.9%
	Asian	46.9%	25.7%	27.6%	46.9%	49.8%	51.0%	6.3%	21.9%	19.3%	0.0%	2.6%	2.0%	32	100.0%	97.0%	97.5%
	Caucasian	39.7%	40.5%	36.3%	52.9%	47.1%	49.0%	6.9%	11.6%	13.7%	0.5%	0.8%	1.0%	189	100.0%	98.5%	98.2%
	Hispanic	28.6%	20.9%	20.2%	57.1%	52.7%	55.2%	14.3%	24.5%	23.1%	0.0%	1.8%	1.5%	7	100.0%	97.0%	97.2%
	Multi-Ethnic	35.3%	25.2%	25.6%	55.9%	51.2%	51.5%	8.8%	21.8%	21.0%	0.0%	1.9%	1.9%	34	100.0%	98.5%	98.6%
Low Income	Yes	26.7%	16.4%	15.3%	60.0%	52.2%	48.7%	11.7%	28.5%	32.4%	1.7%	2.9%	3.6%	60	100.0%	97.6%	98.0%
	No	39.8%	41.3%	36.5%	52.5%	47.0%	48.6%	7.4%	11.1%	13.9%	0.4%	0.7%	0.9%	245	99.6%	98.4%	98.1%
Disabled	Yes	13.9%	7.7%	6.4%	50.0%	40.2%	38.5%	30.6%	45.6%	47.9%	5.6%	6.5%	7.2%	37	97.3%	93.8%	94.2%
	No	40.3%	35.5%	30.9%	54.5%	50.6%	50.3%	5.2%	13.1%	17.6%	0.0%	0.7%	1.2%	268	100.0%	98.9%	98.7%
LEP	Yes	25.0%	14.9%	9.1%	66.7%	53.9%	45.1%	8.3%	28.3%	41.0%	0.0%	2.9%	4.8%	24	100.0%	96.6%	97.5%
	No	38.2%	34.6%	31.0%	52.9%	48.1%	49.3%	8.2%	16.0%	18.1%	0.7%	1.3%	1.5%	281	99.6%	98.3%	98.2%
Migrant	Yes	*	20.2%	12.2%	*	50.6%	43.4%	*	26.5%	39.8%	*	2.7%	4.5%	*	100.0%	99.4%	98.3%
	No	36.3%	31.8%	28.4%	54.7%	49.0%	49.0%	8.3%	17.7%	20.7%	0.7%	1.5%	1.9%	301	99.7%	98.0%	98.1%
Gender	Female	46.7%	37.8%	33.4%	46.7%	47.8%	47.9%	5.9%	13.5%	17.4%	0.7%	1.0%	1.3%	136	99.3%	98.4%	98.4%
	Male	29.6%	25.2%	21.7%	59.8%	50.3%	49.3%	10.1%	22.3%	26.2%	0.6%	2.2%	2.8%	169	100.0%	97.7%	97.7%

*The total number of students tested in this category is fewer than 5. Results cannot be reported according to the state's protocol for reporting results.

Anchorage School District: Profile of Performance 2005-2006

Trailside Grades 3-6 SBA Results Compared with District and State: Math

Math		% Advanced			% Proficient			% Below Proficient			% Far Below Proficient			Total Students Tested	Percent Tested		
		School	District	State	School	District	State	School	District	State	School	District	State	School	School	District	State
Ethnicity	All Students	42.8%	38.3%	32.9%	41.8%	37.0%	38.4%	9.5%	13.1%	14.7%	5.9%	11.7%	14.0%	305	99.7%	98.4%	98.2%
	African American	50.0%	19.2%	19.7%	12.5%	39.8%	40.5%	25.0%	18.2%	19.7%	12.5%	22.9%	20.0%	9	88.9%	98.2%	98.5%
	AK Native/ American Indian	32.4%	24.5%	16.3%	47.1%	40.1%	37.1%	8.8%	17.2%	21.4%	11.8%	18.1%	25.2%	34	100.0%	97.4%	97.7%
	Asian	40.6%	33.8%	35.2%	50.0%	37.3%	39.0%	6.3%	13.7%	13.5%	3.1%	15.2%	12.4%	32	100.0%	98.6%	98.8%
	Caucasian	45.0%	47.7%	41.6%	39.7%	35.1%	38.5%	11.1%	10.3%	11.2%	4.2%	6.9%	8.6%	189	100.0%	98.5%	98.3%
	Hispanic	28.6%	27.2%	26.4%	57.1%	39.1%	40.9%	0.0%	19.3%	18.3%	14.3%	14.5%	14.4%	7	100.0%	99.0%	98.7%
	Multi-Ethnic	44.1%	31.5%	32.1%	44.1%	39.6%	39.6%	2.9%	13.9%	13.6%	8.8%	15.0%	14.7%	34	100.0%	98.7%	98.8%
Low Income	Yes	38.3%	23.2%	20.5%	46.7%	39.3%	38.6%	3.3%	18.1%	19.3%	11.7%	19.4%	21.6%	60	100.0%	98.1%	98.1%
	No	43.9%	48.3%	42.1%	40.6%	35.4%	38.3%	11.1%	9.7%	11.2%	4.5%	6.6%	8.4%	245	99.6%	98.6%	98.3%
Disabled	Yes	19.4%	12.7%	11.0%	30.6%	29.6%	28.7%	22.2%	22.4%	22.6%	27.8%	35.3%	37.7%	37	97.3%	93.7%	94.1%
	No	45.9%	42.7%	36.5%	43.3%	38.2%	40.0%	7.8%	11.4%	13.4%	3.0%	7.6%	10.1%	268	100.0%	99.3%	98.9%
LEP	Yes	41.7%	23.6%	14.7%	45.8%	38.5%	35.1%	12.5%	18.1%	22.4%	0.0%	19.8%	27.8%	24	100.0%	98.8%	98.3%
	No	42.9%	41.2%	36.5%	41.4%	36.7%	39.1%	9.3%	12.1%	13.1%	6.4%	10.1%	11.3%	281	99.6%	98.3%	98.2%
Migrant	Yes	*	25.7%	18.7%	*	38.4%	35.1%	*	17.6%	20.1%	*	18.4%	26.1%	*	100.0%	99.4%	98.1%
	No	42.3%	38.7%	33.8%	42.0%	36.9%	38.7%	9.7%	12.9%	14.3%	6.0%	11.4%	13.2%	301	99.7%	98.4%	98.2%
Gender	Female	44.4%	38.1%	33.0%	38.5%	37.8%	39.2%	9.6%	13.3%	14.8%	7.4%	10.9%	13.1%	136	99.3%	98.7%	98.5%
	Male	41.4%	38.5%	32.8%	44.4%	36.2%	37.7%	9.5%	12.9%	14.6%	4.7%	12.5%	14.9%	169	100.0%	98.1%	97.9%

*The total number of students tested in this category is fewer than 5. Results cannot be reported according to the state's protocol for reporting results.

Trailside TerraNova 5th grade

Percent in each quartile

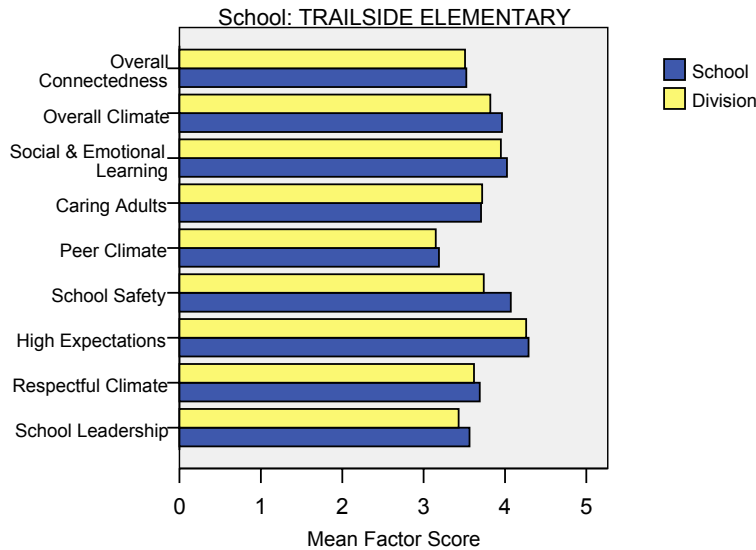
Reading	Above Average		Average				Below Average	
	4th Quartile (76-99 percentile)		3rd Quartile (51-75 percentile)		2nd Quartile (26-50 percentile)		1st Quartile (1-25 percentile)	
	School	District	School	District	School	District	School	District
2005-2006	47.1%	30.4%	21.4%	26.8%	27.1%	24.5%	4.3%	18.3%
2004-2005	34.8%	29.2%	41.3%	27.6%	18.5%	24.5%	5.4%	18.7%
2003-2004	28.8%	30.6%	28.8%	26.9%	28.8%	24.2%	13.6%	18.3%
2002-2003	37.3%	29.1%	24.1%	26.6%	27.7%	23.8%	10.8%	20.5%
2001-2002	29.1%	30.3%	26.6%	26.0%	30.4%	24.6%	13.9%	19.0%

Language	Above Average		Average				Below Average	
	4th Quartile (76-99 percentile)		3rd Quartile (51-75 percentile)		2nd Quartile (26-50 percentile)		1st Quartile (1-25 percentile)	
	School	District	School	District	School	District	School	District
2005-2006	47.1%	34.0%	27.1%	26.5%	17.1%	22.0%	8.6%	17.5%
2004-2005	32.6%	32.1%	37.0%	28.3%	20.7%	21.2%	9.8%	18.4%
2003-2004	32.2%	34.1%	37.3%	26.5%	16.9%	21.7%	13.6%	17.7%
2002-2003	41.0%	32.8%	32.5%	26.5%	18.1%	20.9%	8.4%	19.8%
2001-2002	39.2%	32.3%	26.6%	26.4%	17.7%	22.9%	16.5%	18.4%

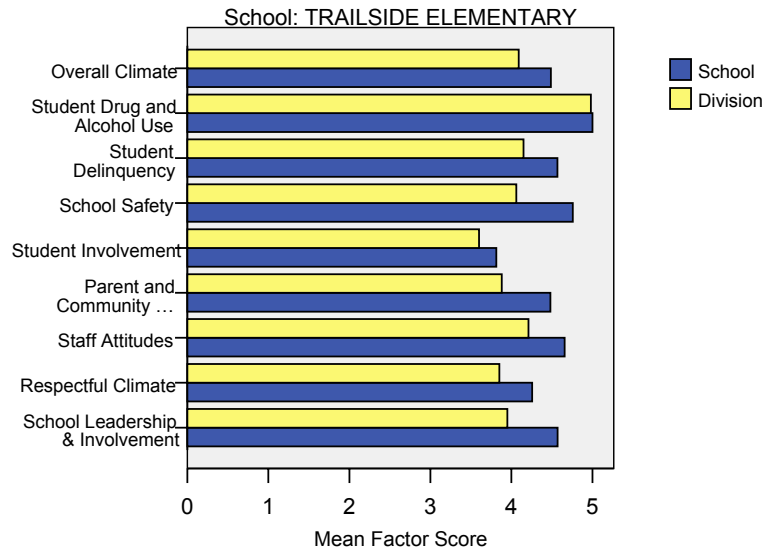
Math	Above Average		Average				Below Average	
	4th Quartile (76-99 percentile)		3rd Quartile (51-75 percentile)		2nd Quartile (26-50 percentile)		1st Quartile (1-25 percentile)	
	School	District	School	District	School	District	School	District
2005-2006	42.9%	28.4%	38.6%	31.9%	14.3%	22.3%	4.3%	17.5%
2004-2005	22.8%	26.9%	47.8%	31.1%	20.7%	22.9%	8.7%	19.1%
2003-2004	32.2%	28.3%	32.2%	29.3%	22.0%	22.6%	13.6%	19.8%
2002-2003	34.1%	24.7%	30.5%	30.6%	19.5%	22.6%	15.9%	22.1%
2001-2002	25.3%	24.1%	38.0%	30.1%	19.0%	24.8%	17.7%	20.9%

Trailside School Climate Survey Results

2006 Student Climate Survey Results



2006 Staff Climate Survey Results



The factors measured in the Student and Staff Climate Survey were:

- **Overall Connectedness – Student Survey:** The Overall Connectedness score for the student survey was computed as an average of three scales: Respectful Climate, Peer Climate, and Caring Adults.
- **Overall Climate – Student Survey:** The Overall Climate score for the student survey was computed as the average of three scales: School Leadership, High Expectations, and School Safety.
- **Overall Climate – Staff Survey:** The Overall Climate score for the staff survey was computed as the average of 6 scales: School Leadership, Respectful Climate, Staff Attitudes, Parent and Community Involvement, Student Involvement, School Safety, Student Delinquency, and Drug and Alcohol Use scores.
- **School Leadership:** Reflects feelings about the decision making of school leaders, fairness of school rules, and student participation in school governance. 1 indicates a low level of school leadership and 5 indicates a high level of school leadership.
- **Respectful Climate:** Fairness of rules and how well students and staff treat one another. 1 indicates a lack of respect and 5 indicates a highly respectful climate.

- **High Expectations:** Expectations of students from peers and adults. 1 indicates a lack of high expectations and 5 indicates very high expectations.
- **School Safety:** Presence of school bullies, gangs and general crime and violence in the community. 1 indicates a low level of safety and 5 indicates a high level of safety.
- **Peer Climate:** Reflects feelings about how respectful and helpful students are to one another. 1 indicates a negative peer climate and 5 indicates a very positive climate.
- **Caring Adults:** Reflects the caring adult relationships students have in the school. 1 indicates a lack of caring relationships and 5 indicates a high number of caring adults.
- **Social & Emotional Learning:** Reflects students' ability to think about the consequences of their actions and to empathize with others. 1 indicates poor social and emotional learning and 5 indicates higher levels of social and emotional learning.
- **Staff Attitudes:** Reflects feelings about competence and attitude towards jobs. 1 indicates more negative attitudes and 5 indicates highly positive attitudes.
- **Parent and Community Involvement:** Accessibility of the school for parents and how connected adults in the community are to the school. 1 indicates a low level of parent and community involvement and 5 indicates a high level of parent and community involvement.
- **Student Involvement:** Reflects feelings about how involved students are in the schools' decision making process. 1 indicates a low level of student involvement and 5 indicates a high level of student involvement.
- **Student Delinquency:** Reflects staff members' reports of witnessed student fights, stealing, and bullying. 1 indicates a high level of delinquency and 5 indicates a low level (5 is most desired).
- **Student Drug and Alcohol Use:** Reflects staff members' reports of observing students under the influence of drugs or alcohol. 1 indicates a high level of drug and alcohol use and 5 indicates a low level (5 is most desired).