

**Benson Secondary School Overview**

**Statement of Program**

Benson Secondary is an alternative school serving the educational needs of students who have been deemed "at risk." The goal of Benson is to assist students in becoming academically successful through the use of individualized instructional strategies. Student success is promoted by keeping classes small and retaining highly committed teachers. Recognizing and celebrating student achievement is another key element of the Benson model. In addition, parent involvement and awareness of student achievement is encouraged through regular communication between parents and school personnel.

From the School Report Card

**SCHOOL GOALS**

Goal	Level of Achievement
Improve student academic achievement as measured by the state graduation exam.	Not Attained
Increase the number of students earning vocational on-the-job credit by 5 percent.	Partially Attained

From the School Report Card

**BUDGET\***

2005-2006 Actual Expenditures	\$1,877,617
2006-2007 Revised Budgeted Amount	\$1,993,465
2007-2008 Proposed Budget	\$1,988,835

\*Dollars budgeted or expended are general fund only.

From IFAS

**Benson Secondary School Characteristics**

	School	District	Source of Information
Membership	259	49,230	Fall OASIS
Capacity (7 -12)	N/A	N/A	Board Report - #202 3/12/07
Attendance Rate	80.2%	92.5%	NCLB Summer Data Collection
Retention Rate K-8	3.5%	1.0%	SMS and NCLB Summer Data Collection
Transiency Rate	76.8%	26.8%	NCLB Summer Data Collection
Economically Disadvantaged	117	18,325	Fall OASIS
Ave. Weekly Volunteer Hours	2	5,111	Dept of Ed Report Card Report
Graduation Rate	35.52%	64.99%	NCLB Summer Data Collection & A&E Graduation File
Dropout Rate - EED's Regulation Calculation	34.75%	5.10%	NCLB Summer Data Collection and Fall Oasis
AP courses offered in 2006-2007	0	168	SMS transcript file
Students successfully completing AP courses	0	1,451	SMS transcript file
AP courses completed by students	0	2,807	SMS transcript file
Students Taking the Alternate Assessment	0	230	SMS
# of students approved for an HSGQE Alternative Assessment (Gr. 11-12)	25	413	SMS
# of students meeting HSGQE requirement using an alternative assessment (Gr. 11-12)	14	201	SMS
Change in Enrollment	-15.9%	-1.0%	Fall Oasis

<b>Teacher Qualification</b>				
# of teachers	% fully licensed	% with advanced degrees	# Nationally Board Certified	% of classes taught by "highly qualified teachers"
18	100%	65%	0	84%

<b>SCHOOL BUSINESS PARTNERSHIPS</b>
Uncle Joe's Pizzeria Carrs Safeway Blockbuster Inc. Alyeska Ski Resort

From the School Report Card

<b>ACCREDITATION</b>		
Initial Accreditation	Name of Accrediting Organization	Level of Accreditation
1978	Northwest Association of Accredited Schools	Approved

**Benson Secondary School Characteristics Continued**

<b>ETHNICITY REPORT - OCTOBER 2006</b>						
<b>White</b>	<b>Black</b>	<b>AK Native/ American Indian</b>	<b>Asian/ Pac. Islander</b>	<b>Hispanic</b>	<b>2 or more races</b>	<b>Total</b>
114	24	65	31	14	11	259

From Fall Oasis

<b>FULL ACADEMIC YEAR (FAY)</b>		
<b>Students Enrolled</b>	<b>Students Enrolled for FAY</b>	<b>Percent FAY</b>
83	33	39.8%

From participation file (3-10 graders)

<b>TOTAL DROPOUT RATE - EED'S REGULATION CALCULATION</b>							
<b>Data Type</b>	<b>AK Native/ American Indian</b>	<b>Asian/ Pac. Islander</b>	<b>Black</b>	<b>Hispanic</b>	<b>White</b>	<b>2 or more races</b>	<b>Total</b>
Enrollment	65	31	24	14	114	11	259
Final Dropouts	22	13	10	6	31	8	90
% of Dropouts	33.85%	41.94%	41.67%	42.86%	27.19%	72.73%	34.75%

From NCLB Summer Data Collection and Fall OASIS

**Anchorage School District  
2006-2007 Adequate Yearly Progress - Anchorage Status Report**

**Benson Secondary School**

**AMO For Language Arts: 71.48%**  
**AMO For Math: 57.61%**

**Does Not Meet AYP  
Level 5**

Group	Participation Rate			"FAY"	Language Arts Performance				Math Performance				
	(A) Number Enrolled	(B) Number Tested	(C) Participation Rate (%)	(D) Participation Rate Met	(E) Tested and Enrolled "FAY"	(F) Proficient on LA	(G) Percent Proficient on LA	(H) LA Target	(I) Met AMO for LA	(J) Proficient on Math	(K) Percent Proficient in Math	(L) Math Target	(M) Met AMO for Math
All Students	83	81	97.6%	Yes	32	16	50%	52.9%	Yes-SH	9	28.1%	37.3%	Yes-SH
African American	<5	<5	N/A	N/A	N/A	N/A	N/A	N/A	N/A	N/A	N/A	N/A	N/A
AkNa & Amln	26	25	96.2%	Yes	N/A	N/A	N/A	N/A	N/A	N/A	N/A	N/A	N/A
Asian	<5	<5	N/A	N/A	N/A	N/A	N/A	N/A	N/A	N/A	N/A	N/A	N/A
Caucasian	41	40	97.6%	Yes	N/A	N/A	N/A	N/A	N/A	N/A	N/A	N/A	N/A
Hispanic	<5	<5	N/A	N/A	N/A	N/A	N/A	N/A	N/A	N/A	N/A	N/A	N/A
Multi-Ethnic	5	5	N/A	N/A	N/A	N/A	N/A	N/A	N/A	N/A	N/A	N/A	N/A
Low Income	52	51	98.1%	Yes	26	12	46.2%	50.8%	Yes-SH	6	23.1%	35%	Yes-SH
Disabled	11	11	N/A	N/A	N/A	N/A	N/A	N/A	N/A	N/A	N/A	N/A	N/A
LEP	13	13	N/A	N/A	N/A	N/A	N/A	N/A	N/A	N/A	N/A	N/A	N/A

Graduation Rate: Not Met                      35.1% (Threshold is 55.58%)

N/A is used to indicate:

(1) Subgroups with 20 or fewer students enrolled on the first day of testing shall not be included in participation rate calculation.

(2) Subgroups with 25 or fewer students enrolled for the "full academic year" shall not have the performance score computed.

\* For the groups where the number enrolled is less than or equal to 40, participation is met when no more than 2 miss the test. Groups can also meet this target using the average of the past two or three years.

\*\* Where a group achieves a "Yes" without meeting the listed target, it has done so using either the 99% confidence interval or Safe Harbor.

\*\*\* Results cannot be published without releasing personally identifiable information.

This document was prepared by the ASD Assessment and Evaluation                      7/30/2007

**Anchorage School District  
2006-2007 Adequate Yearly Progress - Growth Report**

Does Not Meet AYP  
Does Not Meet Growth  
Level 5

**Benson Secondary School**

AMO For Language Arts: 71.48%  
AMO For Math: 57.61%

Group	"FAY"	Language Arts Performance				Math Performance			
		(E) Number of Students Proficient or on Track to Proficiency on LA	(F) Percent Proficient or on Track to Proficiency on LA	(G) LA Target	(H) Met AMO for LA	(I) Number of Students Proficient or on Track to Proficiency on Math	(J) Percent Proficient or on Track to Proficiency on Math	(K) Math Target	(L) Met AMO for Math
If there are 20 or fewer students enrolled, value is "N/A"	(D) Tested and Enrolled "FAY"	(E) Number of Students Proficient or on Track to Proficiency on LA	(F) Percent Proficient or on Track to Proficiency on LA	(G) LA Target	(H) Met AMO for LA	(I) Number of Students Proficient or on Track to Proficiency on Math	(J) Percent Proficient or on Track to Proficiency on Math	(K) Math Target	(L) Met AMO for Math
All Students	32	***	90% or less	71.48%	No	***	90% or less	57.61%	No
African American	N/A	N/A	N/A	N/A	N/A	N/A	N/A	N/A	N/A
AkNa & AmIn	N/A	N/A	N/A	N/A	N/A	N/A	N/A	N/A	N/A
Asian	N/A	N/A	N/A	N/A	N/A	N/A	N/A	N/A	N/A
Caucasian	N/A	N/A	N/A	N/A	N/A	N/A	N/A	N/A	N/A
Hispanic	N/A	N/A	N/A	N/A	N/A	N/A	N/A	N/A	N/A
Multi-Ethnic	N/A	N/A	N/A	N/A	N/A	N/A	N/A	N/A	N/A
Low Income	26	***	90% or less	71.48%	No	***	90% or less	57.61%	No
Disabled	N/A	N/A	N/A	N/A	N/A	N/A	N/A	N/A	N/A
LEP	N/A	N/A	N/A	N/A	N/A	N/A	N/A	N/A	N/A

**Participation Rate: Met**

**Other Indicator: Not Met**

N/A is used to indicate:

- (1) Subgroups with 20 or fewer students enrolled on the first day of testing shall not be included in participation rate calculation.
- (2) Subgroups with 25 or fewer students enrolled for the "full academic year" shall not have the performance score computed.

\* For the groups where the number enrolled is less than or equal to 40, participation is met when no more than 2 miss the test. Groups can also meet this target using the average of the past two or three years.

\*\*\* Results cannot be published without releasing personally identifiable information.

This document was prepared by the ASD Assessment and Evaluation Department.

9/14/2007

**Anchorage School District: Profile of Performance ..... 2006-2007**

**Benson HSGQE - 10th Grade Results**

Reading	Proficient		Not Proficient	
	School	District	School	District
2006-2007	*	91.4%	*	8.6%
2005-2006	57.1%	76.4%	42.9%	23.6%
2004-2005	50.0%	72.5%	50.0%	27.5%
2003-2004	0.0%	73.3%	100.0%	26.7%

Writing	Proficient		Not Proficient	
	School	District	School	District
2006-2007	*	82.5%	*	17.5%
2005-2006	100.0%	90.8%	0.0%	9.2%
2004-2005	75.0%	85.6%	25.0%	14.4%
2003-2004	55.6%	87.0%	44.4%	13.0%

Math	Proficient		Not Proficient	
	School	District	School	District
2006-2007	*	82.3%	*	17.7%
2005-2006	42.9%	79.9%	57.1%	20.1%
2004-2005	57.2%	76.3%	42.9%	14.4%
2003-2004	0.0%	69.8%	100.0%	30.2%

**Benson HSGQE Cumulative Proficiency for Grade 11 and Grade 12 Students (Spring 2007)**

Grade 11			Grade 12		
Subtest	Number	Percent	Subtest	Number	Percent
Reading	42	76.4%	Reading	117	97.5%
Writing	46	83.6%	Writing	118	98.3%
Math	35	63.6%	Math	104	86.7%

\* The total number of students tested in this category is fewer than 5. Results cannot be reported according to the state’s protocol for reporting results.

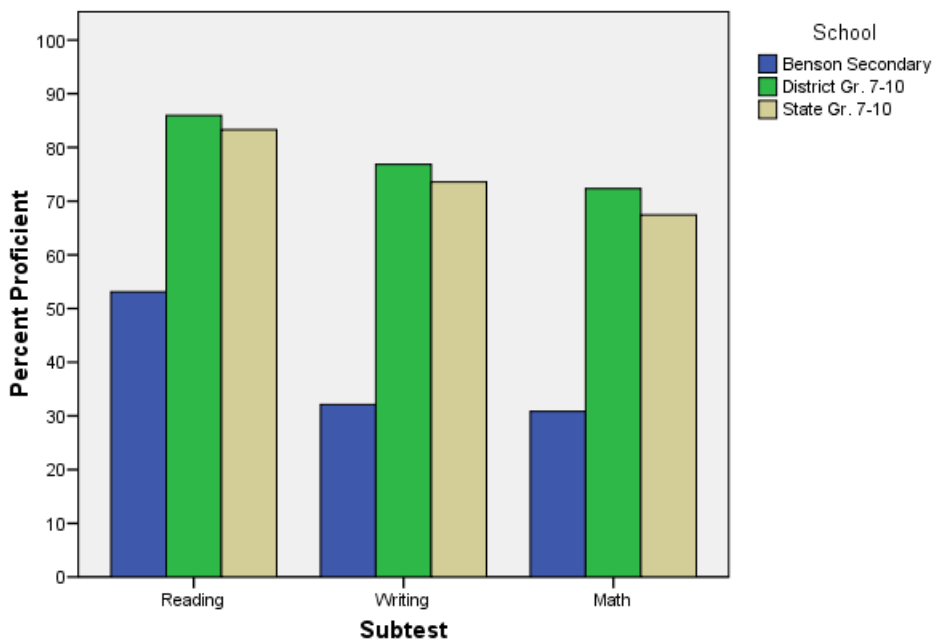
The State Board of Education & Early Development approved two recommended changes to the passing scores, often called “cut scores,” for the Alaska High School Graduation Qualifying Examination in July 2006. The changes in the cut scores went into effect for the Fall 2006 HSGQE test administration. The reading cut score was lowered, the writing cut score went up and the math cut score was not changed. The state board moved the cut for the reading test from 322 to 287 partly because the test now contains more reading passages at a higher level. The state board raised the cut score for the writing test from 275 to 304.

**SBA Proficiency Comparison by Grade for Benson**

		Subtest					
		Reading		Writing		Math	
		Year		Year		Year	
		2005-2006	2006-2007	2005-2006	2006-2007	2005-2006	2006-2007
		Percent Proficient	Percent Proficient	Percent Proficient	Percent Proficient	Percent Proficient	Percent Proficient
Category	All Students	59.60%	53.09%	49.49%	32.10%	23.96%	30.86%
	7th Grade	44.00%	36.84%	44.00%	15.79%	16.67%	15.79%
	8th Grade	57.45%	58.14%	36.17%	34.88%	30.43%	37.21%
	9th Grade	80.00%	50.00%	75.00%	28.57%	21.05%	.
	10th Grade	.	.	.	.	.	.

. Data is suppressed based on Alaska Department of Education and Early Development Protocol

**2007 SBA Results Compared for Benson, District, & State**



Anchorage School District: Profile of Performance ..... 2006-2007

SBA 2007 Proficient & Not Proficient by NCLB Groups for Benson

	Subtest					
	Reading		Writing		Math	
	Year		Year		Year	
	2006-2007		2006-2007		2006-2007	
	Percent Proficient	Percent Not Proficient	Percent Proficient	Percent Not Proficient	Percent Proficient	Percent Not Proficient
All Students	53.09%	46.91%	32.10%	67.90%	30.86%	69.14%
Black	.	.	.	.	.	.
Alaska Native / American Indian	28.00%	72.00%	16.00%	84.00%	16.00%	84.00%
Asian / Pacific Islander	.	.	.	.	.	.
White	67.50%	32.50%	40.00%	60.00%	42.50%	57.50%
Hispanic	.	.	.	.	.	.
2 or More Races	.	.	.	.	.	.
Low Income	47.06%	52.94%	25.49%	74.51%	23.53%	76.47%
Not Low Income	63.33%	36.67%	43.33%	56.67%	43.33%	56.67%
Disabled	36.36%	63.64%	.	.	.	.
Not Disabled	55.71%	44.29%	35.71%	64.29%	34.29%	65.71%
LEP	30.77%	69.23%	23.08%	76.92%	23.08%	76.92%
Not LEP	57.35%	42.65%	33.82%	66.18%	32.35%	67.65%
Migrant	.	.	.	.	.	.
Not Migrant	57.33%	42.67%	34.67%	65.33%	32.00%	68.00%
Female	63.64%	36.36%	45.45%	54.55%	27.27%	72.73%
Male	45.83%	54.17%	22.92%	77.08%	33.33%	66.67%

. Data is suppressed based on Alaska Department of Education and Early Development Protocol

Anchorage School District: Profile of Performance ..... 2006-2007

SBA Mean Scale Score Comparison by NCLB Groups for Benson

	Subtest					
	Reading		Writing		Math	
	Year		Year		Year	
	2005-2006	2006-2007	2005-2006	2006-2007	2005-2006	2006-2007
	Mean Scale Score	Mean Scale Score	Mean Scale Score	Mean Scale Score	Mean Scale Score	Mean Scale Score
All Students	318.39	320.16	293.62	284.81	266.18	272.48
Black	320.62	.	290.23	.	270.08	.
Alaska Native / American Indian	309.29	285.48	283.48	246.32	262.71	253.52
Asian / Pacific Islander	.	.	.	.	.	233.50
White	325.61	344.43	299.29	304.03	265.79	286.35
Hispanic	320.29	.	324.29	.	283.86	.
2 or More Races	.	300.00	.	289.00	.	250.00
Low Income	305.96	308.45	284.81	270.90	258.84	265.31
Not Low Income	335.26	340.07	306.07	308.47	276.45	284.67
Disabled	306.43	285.36	268.00	253.18	239.07	235.45
Not Disabled	320.36	325.63	297.84	289.79	270.80	278.30
LEP	281.33	278.54	282.50	254.15	258.25	249.85
Not LEP	323.51	328.12	295.15	290.68	267.31	276.81
Migrant	279.13	278.17	248.25	242.50	235.00	231.83
Not Migrant	321.85	323.52	297.60	288.20	269.01	275.73
Female	328.41	338.61	319.84	309.09	260.23	267.39
Male	313.61	307.48	281.09	268.13	269.02	275.98

. Data is suppressed based on Alaska Department of Education and Early Development Protocol

Anchorage School District: Profile of Performance ..... 2006-2007

Benson SBA Growth in Average Scale Score by NCLB Groups: Reading

		Average Scale Score of Students Tested in District Both Years			Average Scale Score of Students Tested in District Both Years		
		Grade 6 in 2006	Grade 7 in 2007	Difference	Grade 7 in 2006	Grade 8 in 2007	Difference
Ethnicity	All Students	313.59	298.94	-14.65	306.47	315.53	9.06
	Black	*	*	*	*	*	*
	AK Native/ American Indian	311.57	276.43	-35.14	291.69	293.46	1.77
	Asian	*	*	*	*	*	*
	White	330.33	331.33	1.00	318.06	336.00	17.94
	Hispanic	*	*	*	*	*	*
	2 or More Races	*	*	*	*	*	*
Low Income	Yes	304.00	294.50	-9.50	299.22	305.26	6.04
	No	336.60	309.60	-27.00	321.64	337.00	15.36
Disabled	Yes	256.33	242.67	-13.67	298.88	301.38	2.50
	No	325.86	311.00	-14.86	308.81	319.88	11.08
LEP	Yes	*	*	*	281.00	284.00	3.00
	No	320.69	301.81	-18.88	311.93	322.29	10.36
Migrant	Yes	268.00	274.67	6.67	*	*	*
	No	323.36	304.14	-19.21	305.50	316.91	11.41
Gender	Female	299.25	282.13	-17.13	332.20	340.70	8.50
	Male	326.33	313.89	-12.44	295.75	305.04	9.29

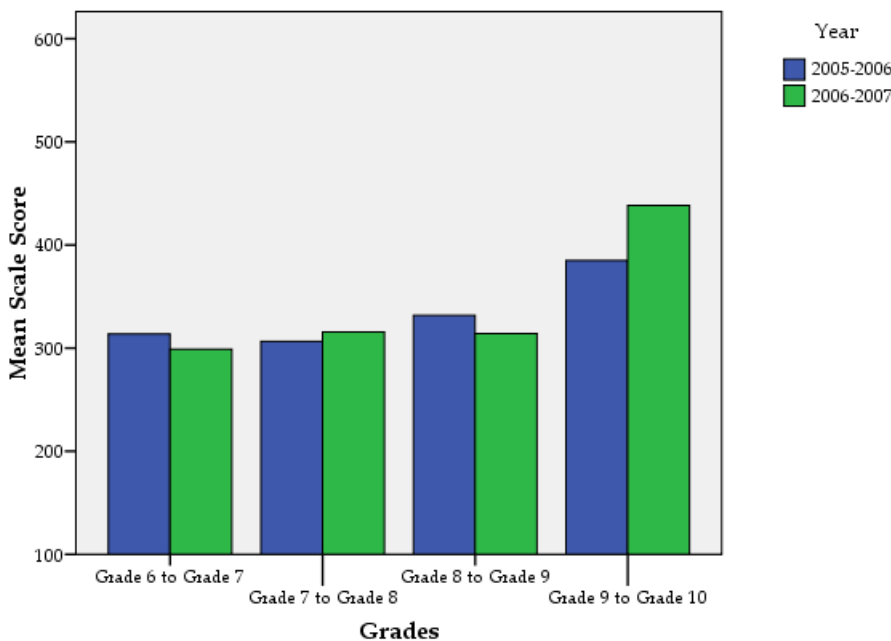
\* Data is suppressed based on Alaska Department of Education and Early Development Protocol

Benson SBA Growth in Average Scale Score by NCLB Groups: Reading

		Average Scale Score of Students Tested in District Both Years			Average Scale Score of Students Tested in District Both Years		
		Grade 8 in 2006	Grade 9 in 2007	Difference	Grade 9 in 2006	Grade 10 in 2007	Difference
Ethnicity	All Students	331.69	314.15	-17.54	385.00	438.33	53.33
	Black	*	*	*	*	*	*
	AK Native/ American Indian	314.75	280.25	-34.50	*	*	*
	Asian	*	*	*	*	*	*
	White	355.57	343.57	-12.00	*	*	*
	Hispanic	*	*	*	*	*	*
	2 or More Races	*	*	*	*	*	*
Low Income	Yes	327.17	304.17	-23.00	*	*	*
	No	335.57	322.71	-12.86	*	*	*
Disabled	Yes	*	*	*	*	*	*
	No	331.69	314.15	-17.54	385.00	438.33	53.33
LEP	Yes	279.50	267.25	-12.25	*	*	*
	No	354.89	335.00	-19.89	385.00	438.33	53.33
Migrant	Yes	*	*	*	*	*	*
	No	335.17	318.83	-16.33	385.00	438.33	53.33
Gender	Female	340.80	340.80	0.00	*	*	*
	Male	326.00	297.50	-28.50	*	*	*

\* Data is suppressed based on Alaska Department of Education and Early Development Protocol

Growth in Mean Scale Score in Reading by Grade for Benson between 2005-2006 and 2006-2007



Anchorage School District: Profile of Performance ..... 2006-2007

Benson SBA Growth in Average Scale Score by NCLB Groups: Writing

		Average Scale Score of Students Tested in District Both Years			Average Scale Score of Students Tested in District Both Years		
		Grade 6 in 2006	Grade 7 in 2007	Difference	Grade 7 in 2006	Grade 8 in 2007	Difference
Ethnicity	All Students	282.59	268.41	-14.18	298.12	275.59	-22.53
	Black	*	*	*	*	*	*
	AK Native/ American Indian	261.29	260.00	-1.29	247.85	239.23	-8.62
	Asian	*	*	*	*	*	*
	White	299.83	276.33	-23.50	330.06	295.33	-34.72
	Hispanic	*	*	*	*	*	*
	2 or More Races	*	*	*	*	*	*
Low Income	Yes	274.25	257.92	-16.33	285.48	265.74	-19.74
	No	302.60	293.60	-9.00	324.55	296.18	-28.36
Disabled	Yes	225.67	233.00	7.33	266.63	260.75	-5.88
	No	294.79	276.00	-18.79	307.81	280.15	-27.65
LEP	Yes	*	*	*	272.50	268.17	-4.33
	No	287.19	270.63	-16.56	303.61	277.18	-26.43
Migrant	Yes	234.67	260.67	26.00	*	*	*
	No	292.86	270.07	-22.79	302.72	278.09	-24.63
Gender	Female	292.13	274.50	-17.63	335.10	307.40	-27.70
	Male	274.11	263.00	-11.11	282.71	262.33	-20.38

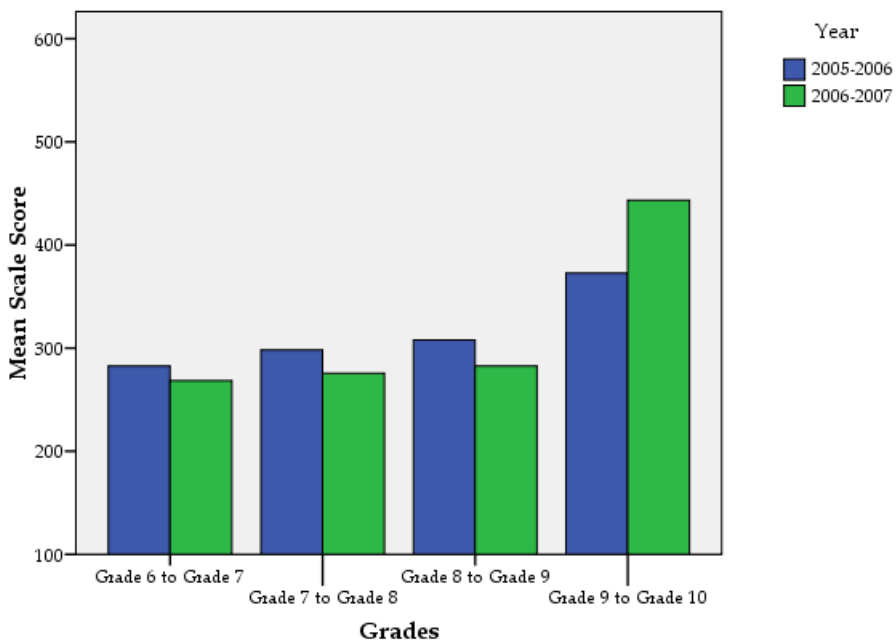
\* Data is suppressed based on Alaska Department of Education and Early Development Protocol

Benson SBA Growth in Average Scale Score by NCLB Groups: Writing

		Average Scale Score of Students Tested in District Both Years			Average Scale Score of Students Tested in District Both Years		
		Grade 8 in 2006	Grade 9 in 2007	Difference	Grade 9 in 2006	Grade 10 in 2007	Difference
Ethnicity	All Students	307.92	282.54	-25.38	372.67	443.33	70.67
	Black	*	*	*	*	*	*
	AK Native/ American Indian	289.50	255.50	-34.00	*	*	*
	Asian	*	*	*	*	*	*
	White	330.86	306.14	-24.71	*	*	*
	Hispanic	*	*	*	*	*	*
	2 or More Races	*	*	*	*	*	*
Low Income	Yes	310.00	268.83	-41.17	*	*	*
	No	306.14	294.29	-11.86	*	*	*
Disabled	Yes	*	*	*	*	*	*
	No	307.92	282.54	-25.38	372.67	443.33	70.67
LEP	Yes	268.25	234.25	-34.00	*	*	*
	No	325.56	304.00	-21.56	372.67	443.33	70.67
Migrant	Yes	*	*	*	*	*	*
	No	309.42	289.25	-20.17	372.67	443.33	70.67
Gender	Female	325.80	301.60	-24.20	*	*	*
	Male	296.75	270.63	-26.13	*	*	*

\* Data is suppressed based on Alaska Department of Education and Early Development Protocol

Growth in Mean Scale Score in Writing by Grade for Benson between 2005-2006 and 2006-2007



Anchorage School District: Profile of Performance ..... 2006-2007

Benson SBA Growth in Average Scale Score by NCLB Groups: Math

		Average Scale Score of Students Tested in District Both Years			Average Scale Score of Students Tested in District Both Years		
		Grade 6 in 2006	Grade 7 in 2007	Difference	Grade 7 in 2006	Grade 8 in 2007	Difference
Ethnicity	All Students	263.12	247.82	-15.29	287.26	280.29	-6.97
	Black	*	*	*	*	*	*
	AK Native/ American Indian	254.29	245.86	-8.43	257.54	260.69	3.15
	Asian	*	*	*	*	*	*
	White	272.33	259.33	-13.00	305.78	294.94	-10.83
	Hispanic	*	*	*	*	*	*
	2 or More Races	*	*	*	*	*	*
Low Income	Yes	250.00	241.25	-8.75	281.30	270.87	-10.43
	No	294.60	263.60	-31.00	299.73	300.00	0.27
Disabled	Yes	214.67	205.00	-9.67	271.88	246.88	-25.00
	No	273.50	257.00	-16.50	292.00	290.58	-1.42
LEP	Yes	*	*	*	273.67	278.33	4.67
	No	265.75	252.25	-13.50	290.18	280.71	-9.46
Migrant	Yes	228.00	254.33	26.33	*	*	*
	No	270.64	246.43	-24.21	290.94	285.38	-5.56
Gender	Female	238.13	227.75	-10.38	302.70	274.20	-28.50
	Male	285.33	265.67	-19.67	280.83	282.83	2.00

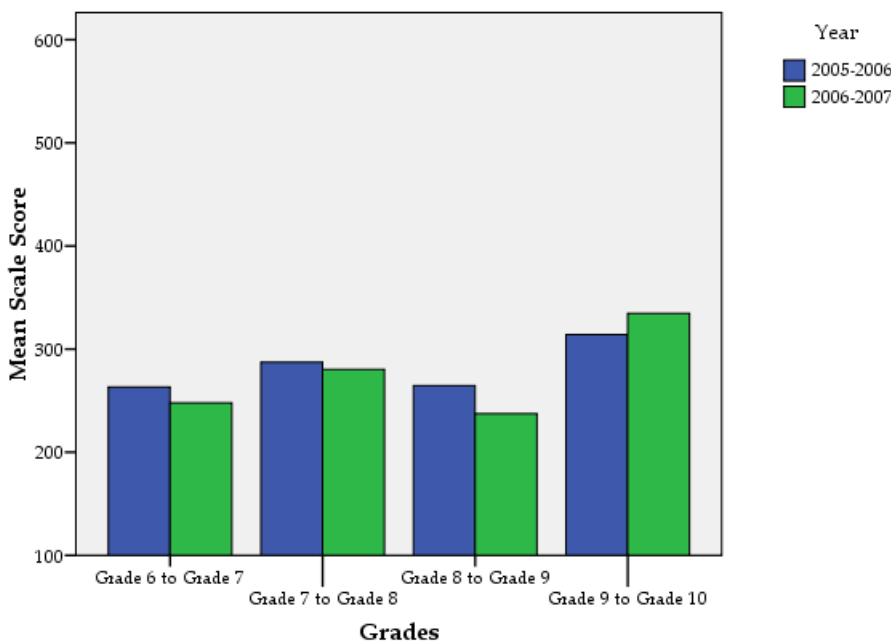
\* Data is suppressed based on Alaska Department of Education and Early Development Protocol

Benson SBA Growth in Average Scale Score by NCLB Groups: Math

		Average Scale Score of Students Tested in District Both Years			Average Scale Score of Students Tested in District Both Years		
		Grade 8 in 2006	Grade 9 in 2007	Difference	Grade 9 in 2006	Grade 10 in 2007	Difference
Ethnicity	All Students	264.62	237.31	-27.31	314.00	334.67	20.67
	Black	*	*	*	*	*	*
	AK Native/ American Indian	267.00	243.00	-24.00	*	*	*
	Asian	*	*	*	*	*	*
	White	277.43	238.86	-38.57	*	*	*
	Hispanic	*	*	*	*	*	*
	2 or More Races	*	*	*	*	*	*
Low Income	Yes	245.67	233.17	-12.50	*	*	*
	No	280.86	240.86	-40.00	*	*	*
Disabled	Yes	*	*	*	*	*	*
	No	264.62	237.31	-27.31	314.00	334.67	20.67
LEP	Yes	221.75	219.25	-2.50	*	*	*
	No	283.67	245.33	-38.33	314.00	334.67	20.67
Migrant	Yes	*	*	*	*	*	*
	No	268.67	237.92	-30.75	314.00	334.67	20.67
Gender	Female	267.00	233.20	-33.80	*	*	*
	Male	263.13	239.88	-23.25	*	*	*

\* Data is suppressed based on Alaska Department of Education and Early Development Protocol

Growth in Mean Scale Score in Math by Grade for Benson between 2005-2006 and 2006-2007



Anchorage School District: Profile of Performance ..... 2006-2007

2007 SBA Results Compared for Benson, District and State

Reading	Benson Secondary	District Gr. 7-10	State Gr. 7-10	Benson Secondary	District Gr. 7-10	State Gr. 7-10	Benson Secondary	District Gr. 7-10	State Gr. 7-10	Benson Secondary	District Gr. 7-10	State Gr. 7-10	Benson Secondary	District Gr. 7-10	State Gr. 7-10
	% Advanced Proficient			% Proficient			% Below Proficient			% Far Below Proficient			% Tested		
All Students	12.35%	42.14%	38.41%	40.74%	43.81%	44.90%	38.27%	11.62%	13.71%	8.64%	2.43%	2.98%	97.59%	96.56%	96.13%
Black	.	25.78%	24.52%	.	51.21%	53.57%	.	19.25%	18.66%	.	3.76%	3.25%	100.00%	95.63%	95.50%
Alaska Native/American Indian	.	24.66%	17.83%	.	48.20%	48.65%	60.00%	21.43%	26.73%	12.00%	5.71%	6.78%	96.15%	94.98%	95.09%
Asian/Pacific Islander	.	28.17%	31.93%	.	51.96%	50.30%	.	16.53%	15.08%	.	3.34%	2.69%	100.00%	96.34%	96.70%
White	22.50%	53.73%	49.95%	45.00%	38.97%	41.33%	.	6.19%	7.38%	.	1.12%	1.33%	97.56%	97.23%	96.65%
Hispanic	.	28.15%	29.29%	.	51.13%	51.78%	.	17.00%	15.57%	.	3.72%	3.36%	100.00%	95.48%	94.99%
2 or More Races	.	31.67%	34.03%	.	47.44%	48.58%	.	17.79%	14.47%	.	3.10%	2.92%	100.00%	96.48%	96.46%
Low Income	5.88%	22.66%	22.24%	41.18%	51.50%	49.91%	43.14%	20.57%	22.39%	9.80%	5.27%	5.46%	98.08%	94.42%	95.09%
Not Low Income	23.33%	52.19%	47.89%	40.00%	39.84%	41.96%	.	7.00%	8.62%	.	0.97%	1.53%	96.77%	97.71%	96.75%
Disabled	.	7.73%	6.72%	.	39.56%	38.10%	.	38.32%	39.42%	.	14.39%	15.76%	100.00%	89.41%	89.38%
Not Disabled	14.29%	46.40%	42.38%	41.43%	44.33%	45.75%	37.14%	8.31%	10.49%	7.14%	0.95%	1.38%	97.22%	97.53%	97.05%
LEP	.	15.42%	9.83%	.	54.93%	49.53%	46.15%	24.33%	32.50%	23.08%	5.32%	8.13%	100.00%	94.62%	95.29%
Not LEP	14.71%	46.90%	43.42%	42.65%	41.83%	44.09%	36.76%	9.36%	10.41%	5.88%	1.92%	2.08%	97.14%	96.92%	96.28%
Migrant	.	24.80%	21.30%	.	49.60%	47.83%	.	20.24%	25.87%	.	5.36%	5.00%	100.00%	95.09%	96.42%
Not Migrant	13.33%	42.76%	39.62%	44.00%	43.60%	44.69%	33.33%	11.31%	12.85%	9.33%	2.33%	2.84%	97.40%	96.62%	96.11%
Female	18.18%	46.04%	42.44%	45.45%	43.52%	44.67%	.	8.96%	11.03%	.	1.48%	1.85%	97.06%	96.72%	96.28%
Male	8.33%	38.44%	34.57%	37.50%	44.09%	45.11%	43.75%	14.14%	16.25%	10.42%	3.33%	4.07%	97.96%	96.41%	96.00%

. Suppressed based on Department of Education and Early Development Reporting Protocol

Anchorage School District: Profile of Performance ..... 2006-2007

2007 SBA Results Compared for Benson, District and State

Writing	Benson Secondary	District Gr. 7-10	State Gr. 7- 10	Benson Secondary	District Gr. 7-10	State Gr. 7- 10	Benson Secondary	District Gr. 7-10	State Gr. 7- 10	Benson Secondary	District Gr. 7-10	State Gr. 7- 10	Benson Secondary	District Gr. 7-10	State Gr. 7- 10
	% Advanced Proficient			% Proficient			% Below Proficient			% Far Below Proficient			% Tested		
All Students	.	9.03%	7.81%	.	67.83%	65.73%	43.21%	17.22%	19.43%	24.69%	5.93%	7.02%	97.59%	96.50%	96.15%
Black	.	3.05%	3.12%	.	62.33%	62.59%	.	24.48%	24.54%	.	10.13%	9.75%	100.00%	95.46%	95.44%
Alaska Native/American Indian	.	3.19%	2.06%	.	54.20%	51.00%	36.00%	29.56%	32.37%	48.00%	13.05%	14.57%	96.15%	94.42%	95.15%
Asian/Pacific Islander	.	6.52%	6.71%	.	67.44%	70.07%	.	19.69%	17.64%	.	6.35%	5.58%	100.00%	96.06%	96.56%
White	.	12.50%	11.10%	.	72.73%	71.92%	45.00%	11.46%	13.28%	15.00%	3.31%	3.70%	97.56%	97.34%	96.66%
Hispanic	.	4.17%	4.41%	.	63.51%	65.37%	.	24.77%	23.17%	.	7.55%	7.04%	100.00%	95.48%	95.18%
2 or More Races	.	5.67%	6.08%	.	61.81%	64.44%	.	24.56%	21.98%	.	7.96%	7.50%	100.00%	96.35%	96.38%
Low Income	.	3.05%	3.13%	.	56.84%	55.82%	45.10%	28.34%	28.77%	29.41%	11.78%	12.28%	98.08%	94.45%	95.19%
Not Low Income	.	12.12%	10.56%	.	73.51%	71.55%	40.00%	11.46%	13.96%	16.67%	2.90%	3.93%	96.77%	97.59%	96.71%
Disabled	.	0.37%	0.39%	.	29.17%	26.74%	54.55%	40.41%	42.76%	36.36%	30.04%	30.11%	100.00%	89.74%	89.48%
Not Disabled	.	10.11%	8.74%	.	72.64%	70.62%	41.43%	14.33%	16.51%	22.86%	2.92%	4.13%	97.22%	97.41%	97.05%
LEP	.	2.13%	1.13%	.	57.99%	47.00%	30.77%	28.95%	35.48%	46.15%	10.93%	16.39%	100.00%	94.79%	95.44%
Not LEP	.	10.26%	8.98%	.	69.59%	69.02%	45.59%	15.12%	16.62%	20.59%	5.03%	5.38%	97.14%	96.81%	96.27%
Migrant	.	2.57%	2.69%	.	54.65%	53.29%	.	28.91%	31.03%	.	13.86%	12.98%	100.00%	95.28%	96.65%
Not Migrant	.	9.26%	8.17%	.	68.30%	66.61%	41.33%	16.80%	18.62%	24.00%	5.64%	6.60%	97.40%	96.54%	96.11%
Female	.	12.68%	10.97%	.	70.87%	69.80%	42.42%	13.34%	15.36%	12.12%	3.11%	3.87%	97.06%	96.51%	96.30%
Male	.	5.57%	4.80%	.	64.96%	61.86%	43.75%	20.88%	23.31%	33.33%	8.58%	10.03%	97.96%	96.48%	96.00%

. Suppressed based on Department of Education and Early Development Reporting Protocol

Anchorage School District: Profile of Performance ..... 2006-2007

2007 SBA Results Compared for Benson, District and State

Math	Benson Secondary	District Gr. 7-10	State Gr. 7-10	Benson Secondary	District Gr. 7-10	State Gr. 7-10	Benson Secondary	District Gr. 7-10	State Gr. 7-10	Benson Secondary	District Gr. 7-10	State Gr. 7-10	Benson Secondary	District Gr. 7-10	State Gr. 7-10
	% Advanced Proficient			% Proficient			% Below Proficient			% Far Below Proficient			% Tested		
All Students	3.70%	31.33%	26.59%	27.16%	41.01%	40.86%	28.40%	15.77%	18.60%	40.74%	11.88%	13.95%	97.59%	96.42%	96.10%
Black	.	14.81%	12.87%	.	38.96%	40.15%	.	23.61%	25.18%	.	22.62%	21.80%	100.00%	95.38%	95.44%
Alaska Native/American Indian	.	17.22%	12.38%	.	38.58%	36.20%	28.00%	23.32%	25.97%	56.00%	20.87%	25.46%	96.15%	93.81%	94.90%
Asian/Pacific Islander	.	28.28%	29.29%	.	42.42%	43.01%	.	16.60%	16.62%	.	12.71%	11.09%	100.00%	96.89%	97.44%
White	.	39.67%	34.30%	.	41.41%	42.42%	25.00%	12.06%	14.94%	32.50%	6.87%	8.34%	97.56%	97.10%	96.51%
Hispanic	.	18.39%	18.26%	.	42.03%	42.56%	.	20.51%	21.77%	.	19.06%	17.41%	100.00%	96.45%	96.43%
2 or More Races	.	21.68%	20.99%	.	41.19%	42.89%	.	18.70%	19.11%	.	18.43%	17.01%	100.00%	95.96%	96.10%
Low Income	.	15.36%	14.49%	.	40.37%	38.73%	27.45%	22.45%	24.12%	49.02%	21.81%	22.66%	98.08%	94.61%	95.08%
Not Low Income	.	39.62%	33.69%	.	41.34%	42.10%	30.00%	12.30%	15.36%	26.67%	6.73%	8.84%	96.77%	97.38%	96.71%
Disabled	.	5.48%	3.86%	.	22.22%	20.78%	.	24.39%	26.59%	.	47.92%	48.78%	100.00%	89.52%	89.36%
Not Disabled	4.29%	34.55%	29.44%	30.00%	43.35%	43.37%	31.43%	14.70%	17.60%	34.29%	7.40%	9.59%	97.22%	97.35%	97.02%
LEP	.	16.05%	9.90%	.	40.83%	34.78%	.	21.56%	26.47%	.	21.56%	28.85%	100.00%	95.95%	96.03%
Not LEP	4.41%	34.10%	29.55%	27.94%	41.05%	41.93%	30.88%	14.72%	17.21%	36.76%	10.13%	11.31%	97.14%	96.50%	96.11%
Migrant	.	18.45%	16.09%	.	36.90%	36.20%	.	21.83%	24.70%	.	22.82%	23.01%	100.00%	95.09%	96.27%
Not Migrant	4.00%	31.79%	27.33%	28.00%	41.16%	41.18%	30.67%	15.55%	18.17%	37.33%	11.49%	13.31%	97.40%	96.46%	96.09%
Female	.	30.57%	26.05%	.	42.85%	42.27%	24.24%	16.25%	19.12%	48.48%	10.32%	12.55%	97.06%	96.35%	96.12%
Male	.	32.05%	27.11%	.	39.28%	39.51%	31.25%	15.32%	18.11%	35.42%	13.36%	15.28%	97.96%	96.48%	96.08%

. Suppressed based on Department of Education and Early Development Reporting Protocol

**Anchorage School District: Profile of Performance ..... 2006-2007**

Benson TerraNova 7th grade

Percent in each quartile

Reading	Above Average		Average				Below Average	
	4th Quartile (76-99 percentile)		3rd Quartile (51-75 percentile)		2nd Quartile (26-50 percentile)		1st Quartile (1-25 percentile)	
	School	District	School	District	School	District	School	District
2006-2007	16.7%	35.6%	22.2%	28.0%	33.3%	21.5%	27.8%	14.9%
2005-2006	7.7%	34.6%	3.8%	28.4%	34.6%	21.8%	53.8%	15.3%
2004-2005	18.2%	33.9%	18.2%	27.1%	18.2%	21.7%	45.5%	17.4%
2003-2004	11.8%	35.1%	41.2%	28.2%	29.4%	21.4%	17.6%	15.3%
2002-2003	23.1%	35.3%	15.4%	28.9%	15.4%	20.1%	46.2%	15.7%
2001-2002	14.3%	34.4%	14.3%	28.6%	28.6%	20.9%	42.9%	16.2%

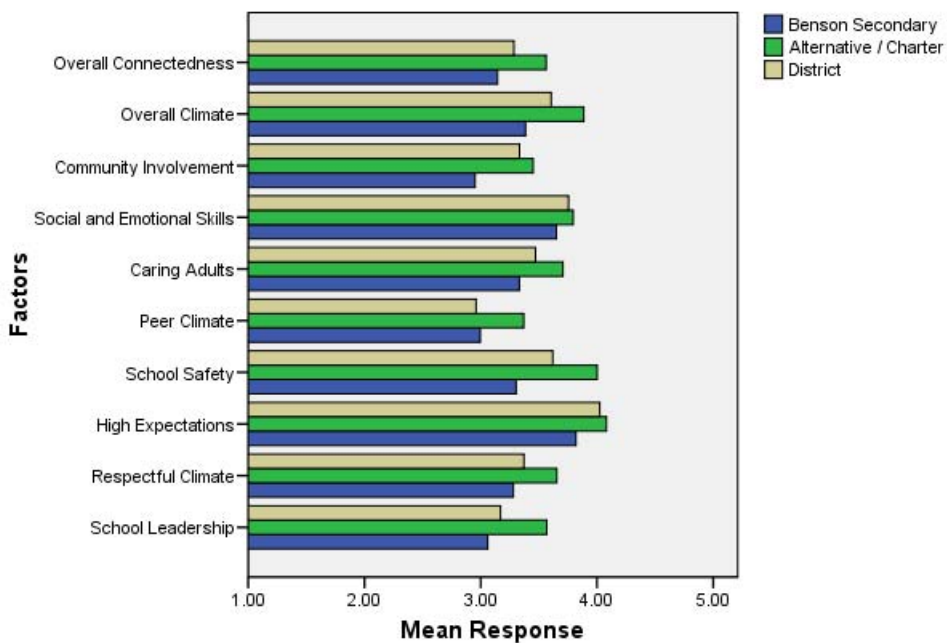
Language	Above Average		Average				Below Average	
	4th Quartile (76-99 percentile)		3rd Quartile (51-75 percentile)		2nd Quartile (26-50 percentile)		1st Quartile (1-25 percentile)	
	School	District	School	District	School	District	School	District
2006-2007		35.4%		28.7%	27.8%	21.5%	44.4%	14.3%
2005-2006	11.5%	34.9%	0.0%	28.4%	23.1%	21.4%	65.4%	15.3%
2004-2005	22.7%	34.4%	13.6%	28.2%	18.2%	20.5%	45.5%	16.9%
2003-2004	17.6%	35.3%	23.5%	28.5%	35.3%	21.7%	23.5%	14.5%
2002-2003	0.0%	34.2%	23.1%	29.8%	30.8%	22.0%	46.2%	14.0%
2001-2002	7.1%	34.0%	28.6%	29.7%	28.6%	20.6%	35.7%	15.7%

Math	Above Average		Average				Below Average	
	4th Quartile (76-99 percentile)		3rd Quartile (51-75 percentile)		2nd Quartile (26-50 percentile)		1st Quartile (1-25 percentile)	
	School	District	School	District	School	District	School	District
2006-2007		31.5%		28.3%		23.0%	75.0%	17.2%
2005-2006	4.0%	31.4%	8.0%	27.8%	32.0%	23.4%	56.0%	17.4%
2004-2005	0.0%	29.7%	13.6%	26.4%	36.4%	22.9%	50.0%	20.9%
2003-2004	0.0%	30.2%	17.6%	27.6%	17.6%	23.9%	64.7%	18.4%
2002-2003	0.0%	31.2%	15.4%	26.9%	23.1%	23.1%	61.5%	18.8%
2001-2002	7.1%	29.7%	14.3%	27.5%	28.6%	22.9%	50.0%	19.9%

.The total number of students in this category is less than 5. Rates were not calculated because of instability caused by small numbers.

Student Survey Results

**2007 Climate and Connectedness Student Survey - Benson Secondary**

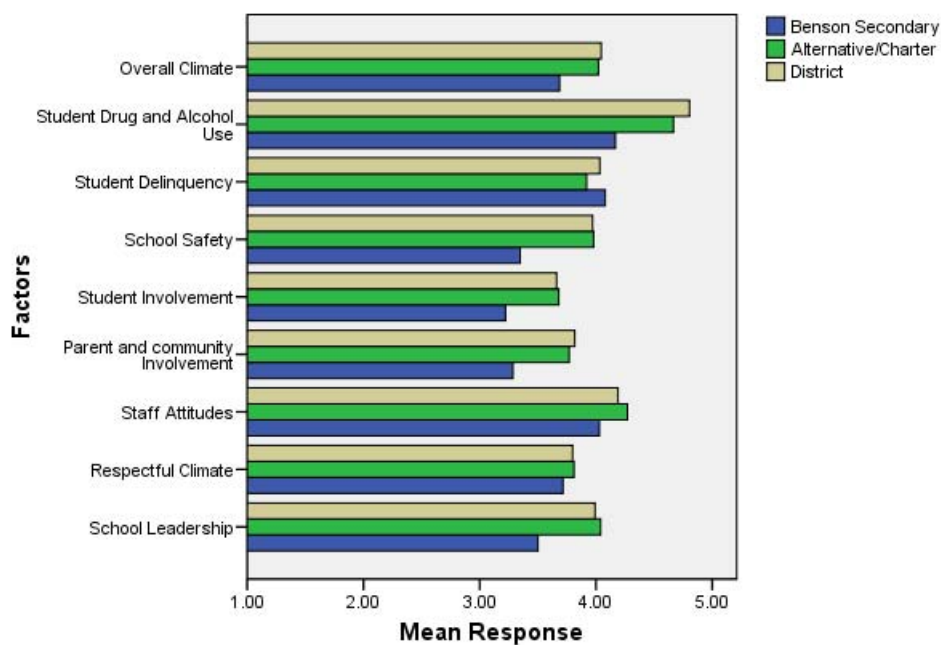


Each question in the survey related to a factor or concept, and a score was calculated based on the average response for the questions related to each factor. The factors measured in the survey were: (Individual questions provided answer categories of strongly agree, agree, agree some/disagree some, disagree, and strongly disagree; 5 being strongly agree and 1 being strongly disagree)

- **School Leadership and Student Involvement:** This factor reflects students’ feelings about the decision making of school leaders as well as student participation in the school governance.
- **Respectful Climate:** This factor reflects students’ feelings about fairness of rules and respect for students’ contributions.
- **High Expectations:** This factor reflects students’ feelings about their own expectations as well as those of adults in their school and community.
- **School Safety:** This factor reflects students’ feelings about bullies and gangs at school as well as general crime and violence in the community.
- **Peer Climate:** This factor reflects students’ feelings about how respectful students are to one another and how helpful students are to other students.
- **Caring Adults:** This factor reflects students’ feelings about how close they feel to other adults in the school.
- **Social and Emotional Learning:** This factor reflects students’ ability to think about the consequences of their actions and to empathize with others.
- **Community Involvement:** This factor reflects students’ feelings about how supportive and welcoming the school is with parents and the community.
- **Overall Climate:** The Overall Climate score was computed as the average of three scales: School Leadership, High Expectations, and School Safety.
- **Overall Connectedness:** Overall Connectedness score was computed as an average of three scales: Respectful Climate, Peer Climate, and Caring Adults.

Staff Survey Results

**2007 Climate and Connectedness Staff Survey - Benson Secondary**



Each question in the survey related to a factor or concept, and a score was calculated based on the average response for the questions related to each factor. The factors were: (Individual questions provided answer categories of strongly agree, agree, agree some/disagree some, disagree, and strongly disagree; 5 being strongly agree and 1 being strongly disagree)

- **School Leadership:** This factor reflects staff members’ feelings about the decision making of school leaders as well as the fairness of school rules.
- **Respectful Climate:** This factor reflects staff members’ feelings about how students treat each other and how well students and staff members treat one another.
- **Staff Attitudes:** This scale reflects staff members’ feelings about the competence of teachers as well how positive their attitudes are towards their jobs.
- **Parent and Community Involvement:** This factor reflects staff members’ feelings about how accessible the school is for parents as well as how connected adults in the community are to the school.
- **Student Involvement:** This factor reflects staff members’ feeling about how involved students are in the decision making process.
- **School Safety:** This factor reflects staff members’ feelings about the impact of gangs and bullies well as general crime and violence in the community.
- **Student Delinquency:** This factor uses staff members’ reports of observing students getting into fights, stealing, and bullying.
- **Student Drug and Alcohol Use:** This factor uses staff members’ reports of observing students under the influence of drugs or alcohol.
- **Overall Climate:** Computed as the mean of 6 scales: School Leadership, Respectful Climate, Staff Attitudes, Parent and Community Involvement, Student Involvement, and School safety, Student Delinquency, and Drug and Alcohol Use scores.

**Parent/Guardian Survey Results**

\* The response rate is not high enough to provide statistically reliable results.