

**Family Partnership Overview**

**Statement of Program**

Family Partnership Charter School is committed to a framework in which mankind's first and most basic school, the home, is supported by the community as a viable educational alternative. The charter school is a non-sectarian partnership between students, parents, educators and community members, where families can customize an education for their children. It is an association of family-based learners who use a school without walls, wherein parents bear the primary responsibility for management of their children's education.

From the School Report Card

**SCHOOL GOALS**

<b>Goal</b>	<b>Level of Achievement</b>
Review legal and administrative revisions to require participation in state mandated testing.	Attained
Seventy-six percent of 10 <sup>th</sup> graders will pass the reading section of the state graduation exam; 98 percent will pass the writing section and 76 percent will pass the math section.	Partially Attained
Of the students in grades 11-12 who need to retake sections of the state graduation exam, 30 percent will pass.	Partially Attained
Proficiency on the state math assessments for grades 3-10 will increase from 55.3 to 60 percent. Adequate Yearly Progress will be achieved for all subgroups in math.	Attained

From the School Report Card

**BUDGET\***

2005-2006 Actual Expenditures	\$1,847,841
2006-2007 Revised Budgeted Amount	\$2,015,552
2007-2008 Proposed Budget	\$1,984,194
*Dollars budgeted or expended are general fund only.	

From IFAS

**Family Partnership Characteristics**

	School	District	Source of Information
Membership	494	49,230	Fall OASIS
Capacity (K-6)	N/A	N/A	Board Report - #202 3/12/07
Capacity (7 -12)	N/A	N/A	Board Report - #202 3/12/07
Attendance Rate	99.9%	92.5%	NCLB Summer Data Collection
Retention Rate K-8	1.2%	1.0%	SMS and NCLB Summer Data Collection
Transiency Rate	27.2%	26.8%	NCLB Summer Data Collection
Economically Disadvantaged	111	18,325	Fall OASIS
Ave. Weekly Volunteer Hours	4	5,111	Dept of Ed Report Card Report
Graduation Rate	64.20%	64.99%	NCLB Summer Data Collection & A&E Graduation File
Dropout Rate - EED's Regulation Calculation	1.60%	5.10%	NCLB Summer Data Collection and Fall Oasis
AP courses offered in 2006-2007	4	168	SMS transcript file
Students successfully completing AP courses	1	1,451	SMS transcript file
AP courses completed by students	2	2,807	SMS transcript file
Students Taking the Alternate Assessment	1	230	SMS
# of students approved for an HSGQE Alternative Assessment (Gr. 11-12)	4	413	SMS
# of students meeting HSGQE requirement using an alternative assessment (Gr. 11-12)	1	201	SMS
Change in Enrollment	2.1%	-1.0%	Fall Oasis

<b>Teacher Qualification</b>				
# of teachers	% fully licensed	% with advanced degrees	# Nationally Board Certified	% of classes taught by "highly qualified teachers"
10	100%	22%	0	15%

<b>SCHOOL BUSINESS PARTNERSHIPS</b>
None Listed

From the School Report Card

<b>ACCREDITATION</b>		
Initial Accreditation	Name of Accrediting Organization	Level of Accreditation
Not accredited	Northwest Association of Accredited Schools	

**Family Partnership Characteristics Continued**

<b>ETHNICITY REPORT - OCTOBER 2006</b>						
<b>White</b>	<b>Black</b>	<b>AK Native/ American Indian</b>	<b>Asian/ Pac. Islander</b>	<b>Hispanic</b>	<b>2 or more races</b>	<b>Total</b>
339	30	54	17	26	28	494

From Fall Oasis

<b>FULL ACADEMIC YEAR (FAY)</b>		
<b>Students Enrolled</b>	<b>Students Enrolled for FAY</b>	<b>Percent FAY</b>
296	274	92.6

From participation file (3-10 graders)

<b>TOTAL DROPOUT RATE - EED'S REGULATION CALCULATION</b>							
<b>Data Type</b>	<b>AK Native/ American Indian</b>	<b>Asian/ Pac. Islander</b>	<b>Black</b>	<b>Hispanic</b>	<b>White</b>	<b>2 or more races</b>	<b>Total</b>
Enrollment	36	16	21	17	208	15	313
Final Dropouts	0	0	1	2	2	0	5
% of Dropouts	0.00%	0.00%	4.76%	11.76%	0.96%	0.00%	1.60%

From NCLB Summer Data Collection and Fall OASIS

**Anchorage School District  
2006-2007 Adequate Yearly Progress - Anchorage Status Report**

**Family Partnership Charter School**

**AMO For Language Arts: 71.48%**  
**AMO For Math: 57.61%**

**Meets AYP under Safe Harbor  
Level 4 (First Year Meeting AYP)**

Group	Participation Rate			"FAY"	Language Arts Performance				Math Performance				
	(A) Number Enrolled	(B) Number Tested	(C) Participation Rate (%)	(D) Participation Rate Met	(E) Tested and Enrolled "FAY"	(F) Proficient on LA	(G) Percent Proficient on LA	(H) LA Target	(I) Met AMO for LA	(J) Proficient on Math	(K) Percent Proficient in Math	(L) Math Target	(M) Met AMO for Math
All Students	296	285	96.3%	Yes	264	204	77.3%	65%	Yes	157	59.5%	50.5%	Yes
African American	10	10	N/A	N/A	N/A	N/A	N/A	N/A	N/A	N/A	N/A	N/A	N/A
AkNa & Amln	35	35	100%	Yes	30	22	73.3%	52.3%	Yes	12	40%	36.6%	Yes
Asian	8	8	N/A	N/A	N/A	N/A	N/A	N/A	N/A	N/A	N/A	N/A	N/A
Caucasian	209	198	94.7%	Yes	184	145	78.8%	63.7%	Yes	114	62%	49.1%	Yes
Hispanic	17	17	N/A	N/A	N/A	N/A	N/A	N/A	N/A	N/A	N/A	N/A	N/A
Multi-Ethnic	17	17	N/A	N/A	N/A	N/A	N/A	N/A	N/A	N/A	N/A	N/A	N/A
Low Income	65	63	96.9%	Yes	60	39	65%	57.9%	Yes	20	33.3%	42.7%	Yes-SH
Disabled	11	11	N/A	N/A	N/A	N/A	N/A	N/A	N/A	N/A	N/A	N/A	N/A
LEP	15	15	N/A	N/A	N/A	N/A	N/A	N/A	N/A	N/A	N/A	N/A	N/A

Graduation Rate: Met

64.2% (Threshold is 55.58%)

N/A is used to indicate:

(1) Subgroups with 20 or fewer students enrolled on the first day of testing shall not be included in participation rate calculation.

(2) Subgroups with 25 or fewer students enrolled for the "full academic year" shall not have the performance score computed.

\* For the groups where the number enrolled is less than or equal to 40, participation is met when no more than 2 miss the test. Groups can also meet this target using the average of the past two or three years.

\*\* Where a group achieves a "Yes" without meeting the listed target, it has done so using either the 99% confidence interval or Safe Harbor.

\*\*\* Results cannot be published without releasing personally identifiable information.

This document was prepared by the ASD Assessment and Evaluation

7/30/2007

**Anchorage School District  
2006-2007 Adequate Yearly Progress - Growth Report**

**Meets AYP under Safe Harbor  
Does Not Meet Growth  
Level 4 (First Year Meeting AYP)**

**Family Partnership Charter**

**AMO For Language Arts: 71.48%  
AMO For Math: 57.61%**

Group	"FAY"	Language Arts Performance				Math Performance			
		(E) Number of Students Proficient or on Track to Proficiency on LA	(F) Percent Proficient or on Track to Proficiency on LA	(G) LA Target	(H) Met AMO for LA	(I) Number of Students Proficient or on Track to Proficiency on Math	(J) Percent Proficient or on Track to Proficiency on Math	(K) Math Target	(L) Met AMO for Math
If there are 20 or fewer students enrolled, value is "N/A"	(D) Tested and Enrolled "FAY"	(E)	(F)	(G)	(H)	(I)	(J)	(K)	(L)
All Students	264	***	95% or less	71.48%	Yes	169	64%	57.61%	Yes
African American	N/A	N/A	N/A	N/A	N/A	N/A	N/A	N/A	N/A
AkNa & AmIn	30	***	90% or less	71.48%	Yes	16	53.3%	57.61%	No
Asian	N/A	N/A	N/A	N/A	N/A	N/A	N/A	N/A	N/A
Caucasian	184	***	95% or less	71.48%	Yes	121	65.8%	57.61%	Yes
Hispanic	N/A	N/A	N/A	N/A	N/A	N/A	N/A	N/A	N/A
Multi-Ethnic	N/A	N/A	N/A	N/A	N/A	N/A	N/A	N/A	N/A
Low Income	60	***	95% or less	71.48%	No	26	43.3%	57.61%	No
Disabled	N/A	N/A	N/A	N/A	N/A	N/A	N/A	N/A	N/A
LEP	N/A	N/A	N/A	N/A	N/A	N/A	N/A	N/A	N/A

**Participation Rate: Met**

**Other Indicator: Met**

N/A is used to indicate:

- (1) Subgroups with 20 or fewer students enrolled on the first day of testing shall not be included in participation rate calculation.
- (2) Subgroups with 25 or fewer students enrolled for the "full academic year" shall not have the performance score computed.

\* For the groups where the number enrolled is less than or equal to 40, participation is met when no more than 2 miss the test. Groups can also meet this target using the average of the past two or three years.

\*\*\* Results cannot be published without releasing personally identifiable information.

This document was prepared by the ASD Assessment and Evaluation Department.

9/14/2007

**Anchorage School District: Profile of Performance ..... 2006-2007**

Family Partnership HSGQE - 10th Grade Results

Reading	Proficient		Not Proficient	
	School	District	School	District
2006-2007	90.5%	91.4%	9.5%	8.6%
2005-2006	74.3%	76.4%	25.7%	23.6%
2004-2005	90.3%	72.5%	9.7%	27.5%
2003-2004	73.7%	73.3%	26.4%	26.7%

Writing	Proficient		Not Proficient	
	School	District	School	District
2006-2007	76.2%	82.5%	23.8%	17.5%
2005-2006	97.3%	90.8%	2.7%	9.2%
2004-2005	100.0%	85.6%	0.0%	14.4%
2003-2004	84.6%	87.0%	15.4%	13.0%

Math	Proficient		Not Proficient	
	School	District	School	District
2006-2007	85.4%	82.3%	14.6%	17.7%
2005-2006	77.8%	79.9%	22.2%	20.1%
2004-2005	87.6%	76.3%	12.6%	14.4%
2003-2004	52.6%	69.8%	47.4%	30.2%

Family Partnership HSGQE Cumulative Proficiency for Grade 11 and Grade 12 Students (Spring 2007)

Grade 11			Grade 12		
Subtest	Number	Percent	Subtest	Number	Percent
Reading	49	92.5%	Reading	64	97.0%
Writing	46	86.8%	Writing	64	97.0%
Math	40	75.5%	Math	61	92.4%

The State Board of Education & Early Development approved two recommended changes to the passing scores, often called “cut scores,” for the Alaska High School Graduation Qualifying Examination in July 2006. The changes in the cut scores went into effect for the Fall 2006 HSGQE test administration. The reading cut score was lowered, the writing cut score went up and the math cut score was not changed. The state board moved the cut for the reading test from 322 to 287 partly because the test now contains more reading passages at a higher level. The state board raised the cut score for the writing test from 275 to 304.

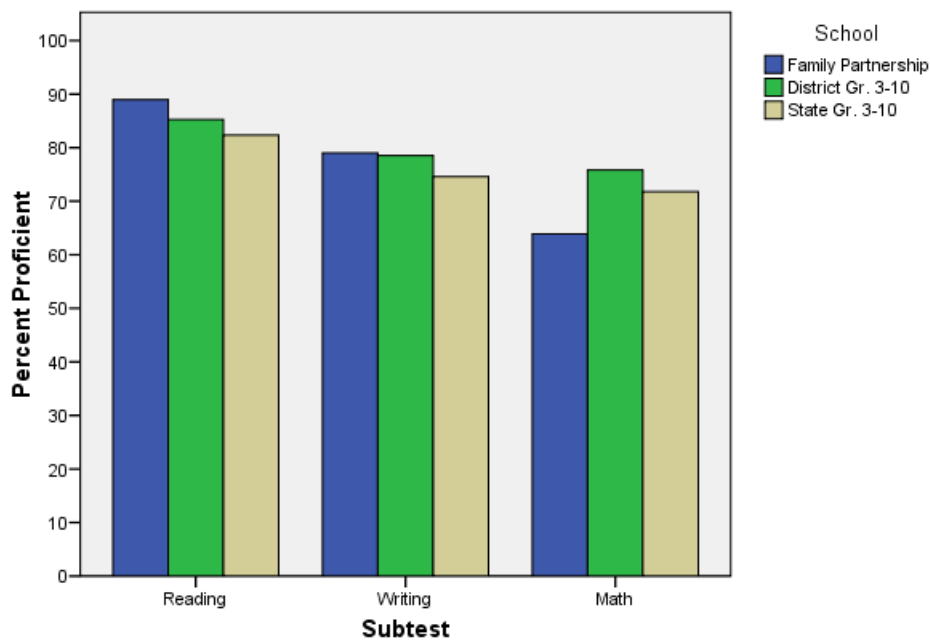
Anchorage School District: Profile of Performance ..... 2006-2007

SBA Proficiency Comparison by Grade for Family Partnership

Category	Subtest					
	Reading		Writing		Math	
	Year		Year		Year	
	2005-2006	2006-2007	2005-2006	2006-2007	2005-2006	2006-2007
	Percent Proficient	Percent Proficient	Percent Proficient	Percent Proficient	Percent Proficient	Percent Proficient
All Students	87.13%	88.97%	80.37%	79.03%	56.34%	63.88%
3rd Grade	81.48%	80.95%	77.78%	65.00%	74.07%	63.16%
4th Grade	72.00%	88.89%	72.00%	76.92%	45.83%	62.50%
5th Grade	.	76.92%	.	76.92%	60.00%	76.00%
6th Grade	.	88.89%	83.33%	78.57%	61.29%	58.62%
7th Grade	85.00%	86.49%	75.00%	85.29%	57.89%	70.59%
8th Grade	.	92.50%	82.22%	75.00%	47.83%	67.50%
9th Grade	81.40%	.	75.61%	82.35%	48.78%	50.98%
10th Grade	85.71%	88.10%	83.78%	83.33%	61.11%	68.29%

. Data is suppressed based on Alaska Department of Education and Early Development Protocol

2007 SBA Results Compared for Family Partnership, District, & State



Anchorage School District: Profile of Performance ..... 2006-2007

SBA 2007 Proficient & Not Proficient by NCLB Groups for Family Partnership

	Subtest					
	Reading		Writing		Math	
	Year		Year		Year	
	2006-2007		2006-2007		2006-2007	
	Percent Proficient	Percent Not Proficient	Percent Proficient	Percent Not Proficient	Percent Proficient	Percent Not Proficient
All Students	88.97%	11.03%	79.03%	20.97%	63.88%	36.12%
Black	.	.	.	.	.	.
Alaska Native / American Indian	82.35%	17.65%	64.71%	35.29%	43.75%	56.25%
Asian / Pacific Islander	.	.	.	.	62.50%	37.50%
White	89.47%	10.53%	82.16%	17.84%	66.49%	33.51%
Hispanic	.	.	78.57%	21.43%	53.85%	46.15%
2 or More Races	80.00%	20.00%	62.50%	37.50%	73.33%	26.67%
Low Income	80.00%	20.00%	56.67%	43.33%	37.04%	62.96%
Not Low Income	91.51%	8.49%	85.51%	14.49%	70.81%	29.19%
Disabled	36.36%	63.64%	33.33%	66.67%	.	.
Not Disabled	91.19%	8.81%	80.62%	19.38%	65.49%	34.51%
LEP	.	.	41.67%	58.33%	28.57%	71.43%
Not LEP	89.27%	10.73%	80.78%	19.22%	65.86%	34.14%
Migrant	63.64%	36.36%	41.67%	58.33%	50.00%	50.00%
Not Migrant	90.04%	9.96%	80.78%	19.22%	64.54%	35.46%
Female	89.87%	10.13%	82.05%	17.95%	60.65%	39.35%
Male	87.72%	12.28%	74.77%	25.23%	68.52%	31.48%

. Data is suppressed based on Alaska Department of Education and Early Development Protocol

Anchorage School District: Profile of Performance ..... 2006-2007

SBA Mean Scale Score Comparison by NCLB Groups for Family Partnership

		Subtest					
		Reading		Writing		Math	
		Year		Year		Year	
		2005-2006	2006-2007	2005-2006	2006-2007	2005-2006	2006-2007
		Mean Scale Score	Mean Scale Score	Mean Scale Score	Mean Scale Score	Mean Scale Score	Mean Scale Score
Category	All Students	379.82	390.68	359.65	363.83	320.05	334.07
	Black	375.90	392.30	362.10	394.10	291.50	334.20
	Alaska Native / American Indian	342.57	365.06	323.47	327.68	284.19	305.44
	Asian / Pacific Islander	345.60	390.63	317.80	379.38	258.60	324.63
	White	388.87	395.04	366.78	369.94	329.16	339.73
	Hispanic	356.80	396.20	348.50	368.43	314.00	321.31
	2 or More Races	363.56	387.07	357.31	339.31	318.75	341.40
	Low Income	337.65	357.97	314.81	321.87	283.50	289.09
	Not Low Income	385.25	399.94	365.47	376.00	325.00	345.69
	Disabled	302.24	300.73	289.35	266.44	269.18	248.88
	Not Disabled	385.00	394.48	364.38	367.23	323.49	336.75
	LEP	308.44	349.55	299.56	304.25	255.11	276.43
	Not LEP	382.27	392.42	361.72	366.64	322.31	337.31
	Migrant	358.29	341.00	336.71	317.58	333.14	300.25
	Not Migrant	380.39	392.78	360.26	366.01	319.70	335.69
	Female	378.69	392.87	362.67	369.43	308.92	325.89
	Male	381.24	387.66	355.82	355.96	333.98	345.81

. Data is suppressed based on Alaska Department of Education and Early Development Protocol

Anchorage School District: Profile of Performance ..... 2006-2007

Family Partnership SBA Growth in Average Scale Score by NCLB Groups: Reading

		Average Scale Score of Students Tested in District Both Years			Average Scale Score of Students Tested in District Both Years			Average Scale Score of Students Tested in District Both Years		
		Grade 3 in 2006	Grade 4 in 2007	Difference	Grade 4 in 2006	Grade 5 in 2007	Difference	Grade 5 in 2006	Grade 6 in 2007	Difference
Ethnicity	All Students	389.27	410.55	21.27	370.76	373.64	2.88	391.57	394.18	2.62
	Black	*	*	*	*	*	*	*	*	*
	AK Native/ American Indian	*	*	*	360.50	359.75	-0.75	*	*	*
	Asian	*	*	*	*	*	*	*	*	*
	White	392.56	416.06	23.50	366.88	374.88	8.00	403.82	404.71	0.88
	Hispanic	*	*	*	*	*	*	*	*	*
	2 or More Races	*	*	*	*	*	*	343.50	340.67	-2.83
Low Income	Yes	348.40	381.60	33.20	326.60	321.40	-5.20	297.00	333.00	36.00
	No	401.29	419.06	17.76	381.80	386.70	4.90	405.75	403.84	-1.91
Disabled	Yes	*	*	*	*	*	*	*	*	*
	No	393.30	417.15	23.85	370.76	373.64	2.88	394.52	396.25	1.73
LEP	Yes	*	*	*	*	*	*	*	*	*
	No	389.27	410.55	21.27	370.76	373.64	2.88	402.29	401.20	-1.09
Migrant	Yes	*	*	*	*	*	*	*	*	*
	No	386.95	405.86	18.90	372.75	377.08	4.33	398.36	399.57	1.21
Gender	Female	380.43	411.43	31.00	368.89	373.53	4.63	415.30	416.40	1.10
	Male	404.75	409.00	4.25	376.67	374.00	-2.67	373.31	375.67	2.36

\* Data is suppressed based on Alaska Department of Education and Early Development Protocol

Anchorage School District: Profile of Performance ..... 2006-2007

Family Partnership SBA Growth in Average Scale Score by NCLB Groups: Reading

		Average Scale Score of Students Tested in District Both Years			Average Scale Score of Students Tested in District Both Years		
		Grade 6 in 2006	Grade 7 in 2007	Difference	Grade 7 in 2006	Grade 8 in 2007	Difference
Ethnicity	All Students	376.63	395.51	18.89	376.29	394.81	18.52
	Black	*	*	*	*	*	*
	AK Native/ American Indian	297.00	316.33	19.33	326.75	365.00	38.25
	Asian	*	*	*	*	*	*
	White	384.03	399.34	15.31	397.39	404.68	7.29
	Hispanic	*	*	*	316.67	362.33	45.67
	2 or More Races	*	*	*	320.00	360.33	40.33
Low Income	Yes	338.00	380.14	42.14	316.44	345.00	28.56
	No	386.29	399.36	13.07	397.84	411.42	13.58
Disabled	Yes	*	*	*	*	*	*
	No	388.42	406.30	17.88	383.16	401.90	18.74
LEP	Yes	*	*	*	*	*	*
	No	377.91	395.26	17.35	380.50	397.06	16.56
Migrant	Yes	*	*	*	*	*	*
	No	376.63	395.51	18.89	380.65	398.97	18.32
Gender	Female	359.25	381.31	22.06	358.00	375.14	17.14
	Male	391.26	407.47	16.21	405.85	432.36	26.52

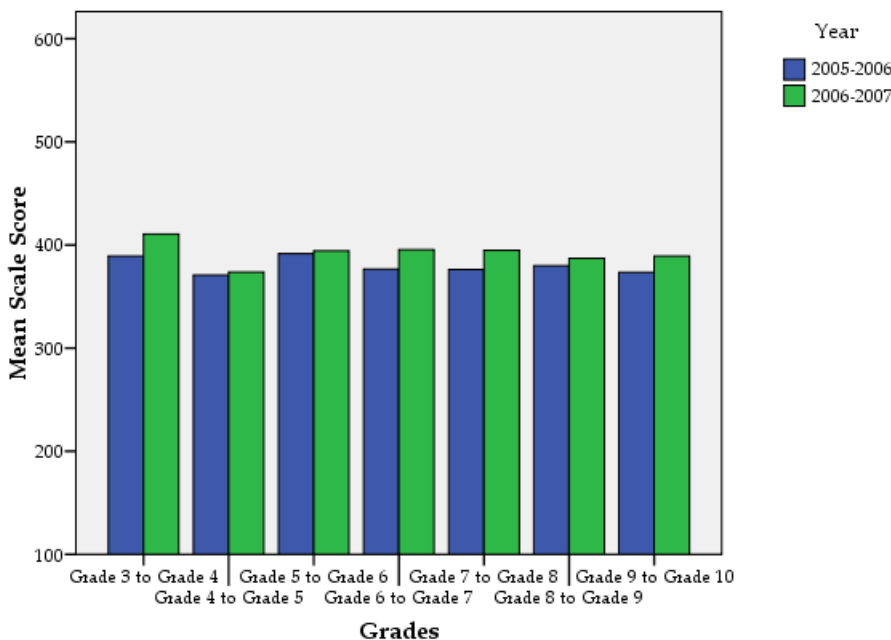
\* Data is suppressed based on Alaska Department of Education and Early Development Protocol

Family Partnership SBA Growth in Average Scale Score by NCLB Groups: Reading

		Average Scale Score of Students Tested in District Both Years			Average Scale Score of Students Tested in District Both Years		
		Grade 8 in 2006	Grade 9 in 2007	Difference	Grade 9 in 2006	Grade 10 in 2007	Difference
Ethnicity	All Students	379.86	387.16	7.30	373.57	389.22	15.65
	Black	373.33	345.33	-28.00	*	*	*
	AK Native/ American Indian	303.00	341.67	38.67	344.13	369.88	25.75
	Asian	356.25	367.75	11.50	*	*	*
	White	387.89	395.11	7.22	377.28	389.92	12.64
	Hispanic	390.00	391.50	1.50	*	*	*
	2 or More Races	*	*	*	*	*	*
Low Income	Yes	383.00	381.00	-2.00	351.30	353.80	2.50
	No	379.27	388.36	9.09	381.81	402.33	20.52
Disabled	Yes	*	*	*	279.67	286.67	7.00
	No	379.86	387.16	7.30	381.85	398.26	16.41
LEP	Yes	*	*	*	*	*	*
	No	380.63	387.50	6.87	373.57	389.22	15.65
Migrant	Yes	*	*	*	*	*	*
	No	379.86	387.16	7.30	379.66	397.26	17.60
Gender	Female	395.85	401.52	5.67	373.29	389.00	15.71
	Male	356.78	367.22	10.44	374.08	389.62	15.54

\* Data is suppressed based on Alaska Department of Education and Early Development Protocol

Growth in Mean Scale Score in Reading by Grade for Family Partnership between 2005-2006 and 2006-2007



Anchorage School District: Profile of Performance ..... 2006-2007

Family Partnership SBA Growth in Average Scale Score by NCLB Groups: Writing

		Average Scale Score of Students Tested in District Both Years			Average Scale Score of Students Tested in District Both Years			Average Scale Score of Students Tested in District Both Years		
		Grade 3 in 2006	Grade 4 in 2007	Difference	Grade 4 in 2006	Grade 5 in 2007	Difference	Grade 5 in 2006	Grade 6 in 2007	Difference
Ethnicity	All Students	375.23	374.43	-0.80	358.00	338.52	-19.48	359.26	361.59	2.33
	Black	*	*	*	*	*	*	*	*	*
	AK Native/ American Indian	*	*	*	349.25	296.50	-52.75	*	*	*
	Asian	*	*	*	*	*	*	*	*	*
	White	386.50	380.12	-6.38	358.18	346.47	-11.71	370.71	376.38	5.67
	Hispanic	*	*	*	*	*	*	*	*	*
	2 or More Races	*	*	*	*	*	*	328.00	313.75	-14.25
Low Income	Yes	353.00	344.60	-8.40	319.20	288.20	-31.00	282.33	272.33	-10.00
	No	381.76	383.75	1.99	367.70	351.10	-16.60	370.80	375.68	4.88
Disabled	Yes	*	*	*	*	*	*	*	*	*
	No	376.05	384.25	8.20	358.00	338.52	-19.48	360.33	363.20	2.87
LEP	Yes	*	*	*	*	*	*	*	*	*
	No	375.23	374.43	-0.80	358.00	338.52	-19.48	367.48	370.40	2.92
Migrant	Yes	*	*	*	*	*	*	*	*	*
	No	372.95	369.65	-3.30	359.17	340.92	-18.25	364.00	371.57	7.57
Gender	Female	368.57	372.46	3.89	358.58	334.37	-24.21	375.00	370.67	-4.33
	Male	386.88	377.63	-9.25	356.17	351.67	-4.50	347.15	355.31	8.15

\* Data is suppressed based on Alaska Department of Education and Early Development Protocol

Anchorage School District: Profile of Performance ..... 2006-2007

Family Partnership SBA Growth in Average Scale Score by NCLB Groups: Writing

		Average Scale Score of Students Tested in District Both Years			Average Scale Score of Students Tested in District Both Years		
		Grade 6 in 2006	Grade 7 in 2007	Difference	Grade 7 in 2006	Grade 8 in 2007	Difference
Ethnicity	All Students	373.88	361.81	-12.07	360.76	382.34	21.58
	Black	*	*	*	*	*	*
	AK Native/ American Indian	326.00	263.33	-62.67	336.75	333.50	-3.25
	Asian	*	*	*	*	*	*
	White	375.18	372.23	-2.95	370.78	394.73	23.94
	Hispanic	*	*	*	*	*	*
	2 or More Races	*	*	*	347.00	325.00	-22.00
Low Income	Yes	349.57	321.29	-28.29	304.67	311.33	6.67
	No	380.19	373.16	-7.03	380.96	410.13	29.17
Disabled	Yes	*	*	*	*	*	*
	No	383.66	366.77	-16.88	364.81	390.03	25.22
LEP	Yes	*	*	*	*	*	*
	No	376.73	362.55	-14.18	367.28	389.87	22.59
Migrant	Yes	*	*	*	305.00	311.67	6.67
	No	373.88	361.81	-12.07	366.16	389.66	23.49
Gender	Female	355.20	346.43	-8.77	352.86	371.19	18.33
	Male	388.63	373.78	-14.85	373.54	403.64	30.10

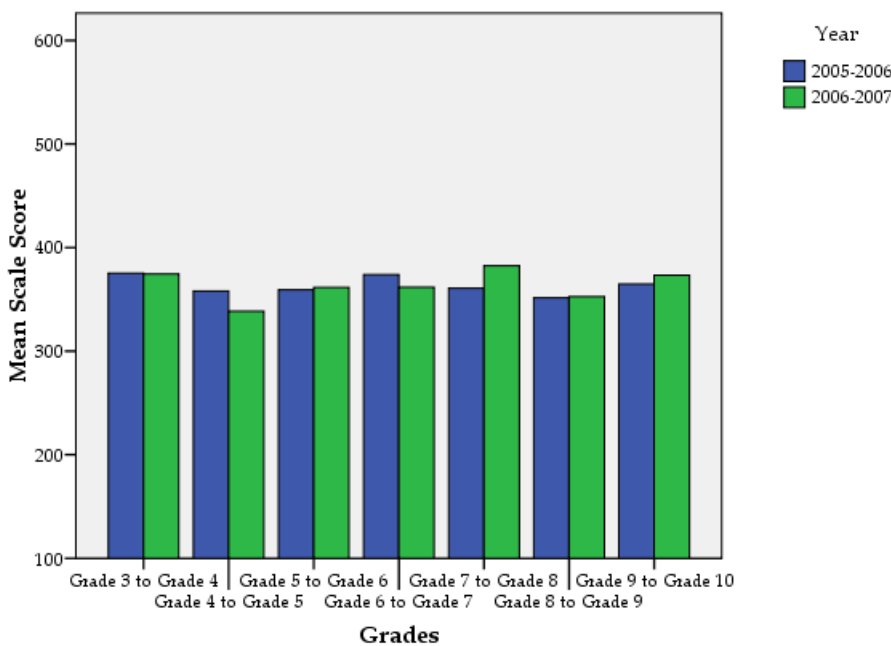
\* Data is suppressed based on Alaska Department of Education and Early Development Protocol

Family Partnership SBA Growth in Average Scale Score by NCLB Groups: Writing

		Average Scale Score of Students Tested in District Both Years			Average Scale Score of Students Tested in District Both Years		
		Grade 8 in 2006	Grade 9 in 2007	Difference	Grade 9 in 2006	Grade 10 in 2007	Difference
Ethnicity	All Students	351.41	352.60	1.19	364.73	373.30	8.57
	Black	369.33	379.33	10.00	*	*	*
	AK Native/ American Indian	*	*	*	341.25	333.38	-7.88
	Asian	327.25	330.00	2.75	*	*	*
	White	355.46	359.73	4.27	361.00	372.13	11.13
	Hispanic	388.50	347.50	-41.00	*	*	*
	2 or More Races	337.67	344.33	6.67	*	*	*
Low Income	Yes	333.14	328.50	-4.64	325.90	342.50	16.60
	No	354.86	356.61	1.75	379.11	384.70	5.59
Disabled	Yes	*	*	*	251.33	262.33	11.00
	No	351.41	352.60	1.19	374.74	383.09	8.35
LEP	Yes	*	*	*	*	*	*
	No	351.26	352.56	1.31	364.73	373.30	8.57
Migrant	Yes	*	*	*	*	*	*
	No	351.41	352.60	1.19	373.34	381.54	8.20
Gender	Female	366.65	365.69	-0.96	371.56	376.08	4.52
	Male	329.39	331.31	1.92	350.50	368.15	17.65

\* Data is suppressed based on Alaska Department of Education and Early Development Protocol

Growth in Mean Scale Score in Writing by Grade for Family Partnership between 2005-2006 and 2006-2007



Anchorage School District: Profile of Performance ..... 2006-2007

Family Partnership SBA Growth in Average Scale Score by NCLB Groups: Math

		Average Scale Score of Students Tested in District Both Years			Average Scale Score of Students Tested in District Both Years			Average Scale Score of Students Tested in District Both Years		
		Grade 3 in 2006	Grade 4 in 2007	Difference	Grade 4 in 2006	Grade 5 in 2007	Difference	Grade 5 in 2006	Grade 6 in 2007	Difference
Ethnicity	All Students	354.00	337.10	-16.90	315.04	344.00	28.96	328.83	335.45	6.63
	Black	*	*	*	*	*	*	*	*	*
	AK Native/ American Indian	*	*	*	281.75	325.00	43.25	*	*	*
	Asian	*	*	*	*	*	*	*	*	*
	White	358.44	341.69	-16.76	322.13	344.00	21.88	336.12	339.44	3.32
	Hispanic	*	*	*	*	*	*	*	*	*
	2 or More Races	*	*	*	*	*	*	331.00	358.50	27.50
Low Income	Yes	336.80	308.50	-28.30	266.60	268.25	1.65	302.33	319.33	17.00
	No	359.06	344.25	-14.81	327.79	359.15	31.36	332.80	338.00	5.20
Disabled	Yes	*	*	*	*	*	*	*	*	*
	No	351.80	337.10	-14.70	315.04	344.00	28.96	333.67	340.55	6.88
LEP	Yes	*	*	*	*	*	*	*	*	*
	No	354.00	337.10	-16.90	315.04	344.00	28.96	330.81	335.10	4.29
Migrant	Yes	*	*	*	*	*	*	*	*	*
	No	349.14	333.21	-15.93	319.35	347.48	28.13	327.23	335.52	8.30
Gender	Female	350.07	336.38	-13.69	297.72	334.00	36.28	323.80	311.56	-12.24
	Male	360.88	338.43	-22.45	367.00	374.00	7.00	332.69	352.00	19.31

\* Data is suppressed based on Alaska Department of Education and Early Development Protocol

Anchorage School District: Profile of Performance ..... 2006-2007

Family Partnership SBA Growth in Average Scale Score by NCLB Groups: Math

		Average Scale Score of Students Tested in District Both Years			Average Scale Score of Students Tested in District Both Years		
		Grade 6 in 2006	Grade 7 in 2007	Difference	Grade 7 in 2006	Grade 8 in 2007	Difference
Ethnicity	All Students	330.12	340.88	10.76	329.61	344.19	14.59
	Black	*	*	*	*	*	*
	AK Native/ American Indian	306.67	265.67	-41.00	275.00	294.25	19.25
	Asian	*	*	*	*	*	*
	White	328.07	344.15	16.08	347.64	365.62	17.98
	Hispanic	*	*	*	*	*	*
	2 or More Races	*	*	*	299.67	290.67	-9.00
Low Income	Yes	297.86	287.43	-10.43	258.89	262.13	3.24
	No	338.48	355.84	17.36	356.13	372.74	16.61
Disabled	Yes	*	*	*	*	*	*
	No	335.16	346.16	11.01	338.35	352.66	14.30
LEP	Yes	*	*	*	*	*	*
	No	332.21	342.58	10.37	334.58	351.59	17.01
Migrant	Yes	*	*	*	293.00	286.67	-6.33
	No	330.12	340.88	10.76	333.27	350.36	17.09
Gender	Female	288.80	309.07	20.27	304.95	315.10	10.15
	Male	362.74	365.61	2.87	372.75	397.09	24.34

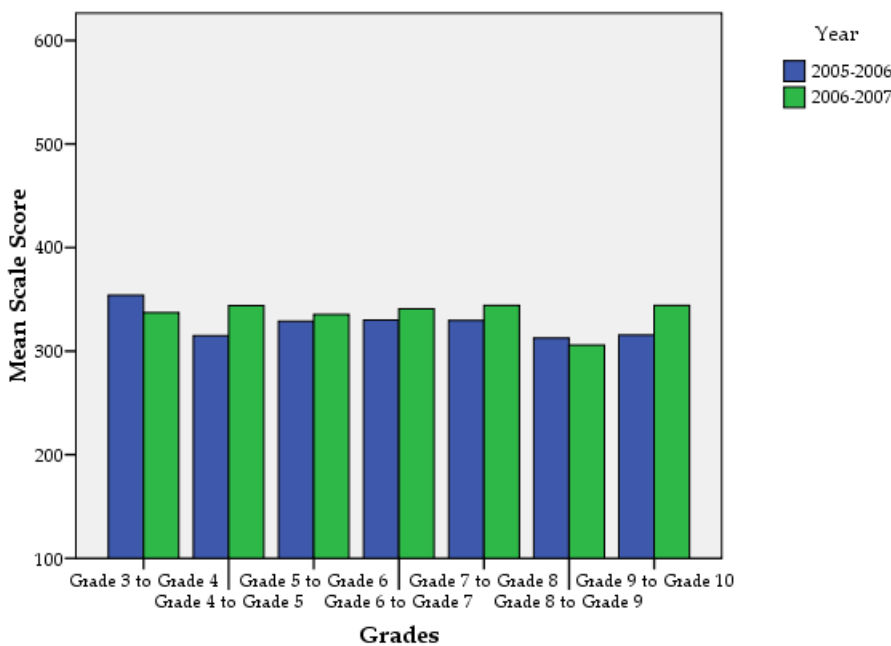
\* Data is suppressed based on Alaska Department of Education and Early Development Protocol

Family Partnership SBA Growth in Average Scale Score by NCLB Groups: Math

		Average Scale Score of Students Tested in District Both Years			Average Scale Score of Students Tested in District Both Years		
		Grade 8 in 2006	Grade 9 in 2007	Difference	Grade 9 in 2006	Grade 10 in 2007	Difference
Ethnicity	All Students	312.62	305.90	-6.72	315.53	344.14	28.61
	Black	296.33	282.67	-13.67	*	*	*
	AK Native/ American Indian	261.00	267.33	6.33	294.63	313.29	18.66
	Asian	271.00	286.75	15.75	*	*	*
	White	326.86	315.89	-10.97	316.63	345.92	29.30
	Hispanic	321.25	319.33	-1.92	*	*	*
	2 or More Races	*	*	*	*	*	*
Low Income	Yes	290.14	305.20	15.06	304.44	303.63	-0.82
	No	316.76	306.00	-10.76	319.22	355.71	36.49
Disabled	Yes	*	*	*	251.33	267.33	16.00
	No	312.62	305.90	-6.72	321.36	351.12	29.76
LEP	Yes	*	*	*	*	*	*
	No	313.52	306.71	-6.82	315.53	344.14	28.61
Migrant	Yes	*	*	*	*	*	*
	No	312.62	305.90	-6.72	320.41	350.91	30.50
Gender	Female	317.69	308.60	-9.09	318.83	336.74	17.91
	Male	305.68	301.94	-3.74	308.92	357.23	48.31

\* Data is suppressed based on Alaska Department of Education and Early Development Protocol

Growth in Mean Scale Score in Math by Grade for Family Partnership between 2005-2006 and 2006-2007



Anchorage School District: Profile of Performance ..... 2006-2007

2007 SBA Results Compared for Family Partnership, District and State

Reading	Family Partnership	District Gr. 3-10	State Gr. 3-10	Family Partnership	District Gr. 3-10	State Gr. 3-10	Family Partnership	District Gr. 3-10	State Gr. 3-10	Family Partnership	District Gr. 3-10	State Gr. 3-10	Family Partnership	District Gr. 3-10	State Gr. 3-10
	% Advanced Proficient			% Proficient			% Below Proficient			% Far Below Proficient			% Tested		
All Students	47.79%	41.21%	37.23%	41.18%	44.04%	45.11%	8.46%	11.13%	13.43%	2.57%	3.62%	4.23%	91.89%	97.32%	97.05%
Black	50.00%	24.64%	24.13%	40.00%	52.18%	53.83%	.	17.73%	17.28%	.	5.45%	4.76%	100.00%	96.94%	96.90%
Alaska Native/American Indian	29.41%	24.38%	16.75%	52.94%	49.53%	48.28%	.	18.81%	25.84%	.	7.28%	9.14%	97.14%	96.56%	96.49%
Asian/Pacific Islander	50.00%	29.16%	31.92%	50.00%	50.02%	49.91%	.	15.88%	14.50%	.	4.95%	3.67%	100.00%	96.50%	96.75%
White	51.58%	52.80%	48.71%	37.89%	38.95%	41.70%	7.37%	6.31%	7.49%	3.16%	1.94%	2.09%	90.91%	97.87%	97.42%
Hispanic	46.67%	27.32%	28.11%	53.33%	51.44%	52.68%	.	16.34%	14.90%	.	4.90%	4.30%	88.24%	96.15%	95.87%
2 or More Races	40.00%	32.94%	34.90%	40.00%	48.06%	48.43%	.	14.57%	12.59%	.	4.43%	4.09%	88.24%	97.32%	97.38%
Low Income	25.00%	23.49%	22.25%	55.00%	51.37%	49.57%	.	18.34%	20.97%	.	6.80%	7.22%	92.31%	96.14%	96.42%
Not Low Income	54.25%	52.12%	47.27%	37.26%	39.52%	42.12%	5.66%	6.69%	8.39%	2.83%	1.66%	2.23%	91.77%	98.06%	97.47%
Disabled	.	9.55%	8.37%	.	39.47%	38.26%	36.36%	32.82%	35.07%	27.27%	18.16%	18.29%	100.00%	91.89%	91.47%
Not Disabled	49.43%	45.89%	41.38%	41.76%	44.71%	46.09%	7.28%	7.93%	10.32%	1.53%	1.47%	2.21%	91.58%	98.17%	97.91%
LEP	.	17.76%	10.97%	.	53.39%	48.06%	.	21.99%	30.58%	.	6.85%	10.38%	73.33%	95.54%	96.20%
Not LEP	49.43%	45.72%	42.22%	39.85%	42.24%	44.54%	8.05%	9.05%	10.17%	2.68%	3.00%	3.06%	92.88%	97.66%	97.21%
Migrant	27.27%	26.04%	19.43%	36.36%	50.10%	47.39%	.	17.82%	25.45%	.	6.04%	7.73%	91.67%	96.65%	97.11%
Not Migrant	48.66%	41.77%	38.43%	41.38%	43.81%	44.95%	7.28%	10.89%	12.62%	2.68%	3.53%	4.00%	91.90%	97.34%	97.05%
Female	48.73%	45.44%	41.09%	41.14%	43.40%	44.96%	7.59%	8.82%	11.04%	2.53%	2.34%	2.91%	90.80%	97.49%	97.24%
Male	46.49%	37.19%	33.55%	41.23%	44.64%	45.24%	9.65%	13.34%	15.71%	2.63%	4.84%	5.49%	93.44%	97.16%	96.87%

. Suppressed based on Department of Education and Early Development Reporting Protocol

Anchorage School District: Profile of Performance ..... 2006-2007

2007 SBA Results Compared for Family Partnership, District and State

Writing	Family Partnership	District Gr. 3-10	State Gr. 3-10	Family Partnership	District Gr. 3-10	State Gr. 3-10	Family Partnership	District Gr. 3-10	State Gr. 3-10	Family Partnership	District Gr. 3-10	State Gr. 3-10	Family Partnership	District Gr. 3-10	State Gr. 3-10
	% Advanced Proficient			% Proficient			% Below Proficient			% Far Below Proficient			% Tested		
All Students	16.48%	22.97%	19.72%	62.55%	55.53%	54.88%	17.60%	17.58%	20.47%	3.37%	3.92%	4.93%	90.20%	97.18%	97.02%
Black	.	12.79%	12.85%	.	54.10%	55.24%	.	26.50%	25.60%	.	6.60%	6.31%	100.00%	96.85%	96.87%
Alaska Native/American Indian	.	12.03%	7.67%	.	51.14%	46.33%	.	28.51%	35.46%	.	8.32%	10.55%	97.14%	96.12%	96.47%
Asian/Pacific Islander	.	18.26%	19.40%	.	56.22%	58.12%	.	20.69%	18.50%	.	4.83%	3.98%	100.00%	96.26%	96.58%
White	18.38%	28.95%	25.78%	63.78%	57.31%	58.19%	14.05%	11.59%	13.48%	3.78%	2.15%	2.54%	88.52%	97.82%	97.41%
Hispanic	.	15.58%	15.18%	.	54.51%	57.44%	.	25.06%	22.90%	.	4.85%	4.47%	82.35%	95.99%	95.78%
2 or More Races	18.75%	22.35%	21.59%	43.75%	51.41%	53.48%	.	22.10%	20.81%	.	4.14%	4.12%	94.12%	97.12%	97.32%
Low Income	6.67%	13.33%	11.92%	50.00%	51.55%	49.90%	33.33%	28.00%	30.14%	10.00%	7.12%	8.03%	92.31%	96.08%	96.46%
Not Low Income	19.32%	28.91%	24.96%	66.18%	57.99%	58.23%	13.04%	11.16%	13.98%	1.45%	1.94%	2.84%	89.61%	97.86%	97.40%
Disabled	.	5.28%	4.59%	.	34.12%	31.66%	33.33%	43.68%	45.51%	33.33%	16.92%	18.25%	81.82%	92.11%	91.65%
Not Disabled	17.05%	25.60%	21.91%	63.57%	58.71%	58.24%	17.05%	13.70%	16.85%	2.33%	1.99%	3.01%	90.53%	97.98%	97.85%
LEP	.	12.27%	7.31%	.	51.88%	43.15%	.	28.61%	38.23%	.	7.24%	11.31%	80.00%	95.52%	96.25%
Not LEP	17.25%	25.03%	22.09%	63.53%	56.24%	57.12%	16.08%	15.45%	17.08%	3.14%	3.28%	3.71%	90.75%	97.50%	97.17%
Migrant	.	12.59%	8.36%	.	52.23%	47.72%	.	27.06%	34.37%	.	8.13%	9.55%	100.00%	96.56%	97.23%
Not Migrant	16.47%	23.35%	20.49%	64.31%	55.65%	55.37%	16.47%	17.23%	19.53%	2.75%	3.76%	4.61%	89.79%	97.20%	97.01%
Female	18.59%	28.86%	24.77%	63.46%	55.76%	56.25%	15.38%	13.31%	16.15%	2.56%	2.07%	2.84%	89.66%	97.22%	97.23%
Male	13.51%	17.38%	14.92%	61.26%	55.32%	53.58%	20.72%	21.63%	24.58%	4.50%	5.68%	6.92%	90.98%	97.14%	96.82%

. Suppressed based on Department of Education and Early Development Reporting Protocol

2007 SBA Results Compared for Family Partnership, District and State

Math	Family Partnership	District Gr. 3-10	State Gr. 3-10	Family Partnership	District Gr. 3-10	State Gr. 3-10	Family Partnership	District Gr. 3-10	State Gr. 3-10	Family Partnership	District Gr. 3-10	State Gr. 3-10	Family Partnership	District Gr. 3-10	State Gr. 3-10
	% Advanced Proficient			% Proficient			% Below Proficient			% Far Below Proficient			% Tested		
All Students	26.24%	36.70%	31.91%	37.64%	39.14%	39.89%	20.91%	13.79%	16.00%	15.21%	10.37%	12.21%	88.85%	97.29%	97.04%
Black	30.00%	18.52%	17.86%	50.00%	39.92%	41.48%	.	21.26%	21.68%	.	20.30%	18.99%	100.00%	96.89%	96.90%
Alaska Native/American Indian	15.63%	23.45%	16.19%	28.13%	39.25%	37.79%	31.25%	19.92%	23.29%	25.00%	17.39%	22.72%	91.43%	95.92%	96.32%
Asian/Pacific Islander	.	32.91%	34.36%	.	40.99%	41.59%	.	14.59%	14.28%	.	11.52%	9.76%	100.00%	97.54%	97.81%
White	27.03%	45.36%	40.19%	39.46%	38.31%	40.23%	20.54%	10.39%	12.42%	12.97%	5.95%	7.17%	88.52%	97.65%	97.27%
Hispanic	23.08%	25.13%	24.78%	30.77%	40.78%	42.42%	.	17.66%	18.23%	.	16.43%	14.57%	76.47%	97.24%	96.98%
2 or More Races	33.33%	30.82%	30.94%	40.00%	40.04%	40.99%	.	15.78%	15.74%	.	13.36%	12.32%	88.24%	97.17%	97.35%
Low Income	7.41%	22.21%	20.28%	29.63%	40.73%	39.79%	31.48%	19.19%	20.91%	31.48%	17.87%	19.02%	83.08%	96.53%	96.59%
Not Low Income	31.10%	45.67%	39.73%	39.71%	38.16%	39.95%	18.18%	10.45%	12.70%	11.00%	5.72%	7.63%	90.48%	97.76%	97.34%
Disabled	.	10.49%	8.85%	.	27.27%	27.01%	37.50%	24.10%	24.91%	50.00%	38.14%	39.22%	72.73%	92.01%	91.68%
Not Disabled	27.06%	40.58%	35.24%	38.43%	40.90%	41.74%	20.39%	12.27%	14.71%	14.12%	6.26%	8.31%	89.47%	98.12%	97.86%
LEP	.	22.07%	14.14%	.	41.07%	36.59%	21.43%	18.64%	23.91%	50.00%	18.23%	25.36%	93.33%	97.16%	96.95%
Not LEP	27.31%	39.56%	35.32%	38.55%	38.76%	40.52%	20.88%	12.84%	14.48%	13.25%	8.83%	9.68%	88.61%	97.32%	97.05%
Migrant	.	25.72%	19.40%	.	39.37%	37.18%	25.00%	18.10%	22.50%	25.00%	16.82%	20.92%	100.00%	96.75%	96.99%
Not Migrant	27.09%	37.10%	32.75%	37.45%	39.13%	40.07%	20.72%	13.63%	15.56%	14.74%	10.14%	11.62%	88.38%	97.31%	97.04%
Female	23.23%	36.86%	31.94%	37.42%	40.21%	40.90%	22.58%	14.03%	16.23%	16.77%	8.90%	10.94%	89.08%	97.30%	97.13%
Male	30.56%	36.54%	31.88%	37.96%	38.12%	38.92%	18.52%	13.56%	15.77%	12.96%	11.77%	13.42%	88.52%	97.28%	96.95%

. Suppressed based on Department of Education and Early Development Reporting Protocol

**Anchorage School District: Profile of Performance ..... 2006-2007**

Family Partnership TerraNova 5th grade

Percent in each quartile

Reading	Above Average		Average				Below Average	
	4th Quartile (76-99 percentile)		3rd Quartile (51-75 percentile)		2nd Quartile (26-50 percentile)		1st Quartile (1-25 percentile)	
	School	District	School	District	School	District	School	District
2006-2007	31.8%	33.1%	22.7%	26.1%	31.8%	23.6%	13.6%	17.2%
2005-2006	44.0%	30.4%	28.0%	26.8%	24.0%	24.5%	4.0%	18.3%
2004-2005	59.3%	29.2%	22.2%	27.6%	11.1%	24.5%	7.4%	18.7%
2003-2004	37.5%	30.6%	37.5%	26.9%	15.6%	24.2%	9.4%	18.3%
2002-2003	40.9%	29.1%	31.8%	26.6%	18.2%	23.8%	9.1%	20.5%
2001-2002	46.7%	30.3%	30.0%	26.0%	16.7%	24.6%	6.7%	19.0%

Language	Above Average		Average				Below Average	
	4th Quartile (76-99 percentile)		3rd Quartile (51-75 percentile)		2nd Quartile (26-50 percentile)		1st Quartile (1-25 percentile)	
	School	District	School	District	School	District	School	District
2006-2007	45.5%	34.7%	18.2%	26.9%	18.2%	21.4%	18.2%	17.0%
2005-2006	32.0%	34.0%	36.0%	26.5%	24.0%	22.0%	8.0%	17.5%
2004-2005	55.6%	32.1%	29.6%	28.3%	3.7%	21.2%	11.1%	18.4%
2003-2004	50.0%	34.1%	28.1%	26.5%	15.6%	21.7%	6.3%	17.7%
2002-2003	40.9%	32.8%	29.5%	26.5%	13.6%	20.9%	15.9%	19.8%
2001-2002	36.7%	32.3%	36.7%	26.4%	10.0%	22.9%	16.7%	18.4%

Math	Above Average		Average				Below Average	
	4th Quartile (76-99 percentile)		3rd Quartile (51-75 percentile)		2nd Quartile (26-50 percentile)		1st Quartile (1-25 percentile)	
	School	District	School	District	School	District	School	District
2006-2007	18.2%	29.7%	40.9%	31.6%	27.3%	21.2%	13.6%	17.4%
2005-2006	24.0%	28.4%	20.0%	31.9%	36.0%	22.3%	20.0%	17.5%
2004-2005	29.6%	26.9%	40.7%	31.1%	18.5%	22.9%	11.1%	19.1%
2003-2004	21.9%	28.3%	37.5%	29.3%	28.1%	22.6%	12.5%	19.8%
2002-2003	31.8%	24.7%	18.2%	30.6%	29.5%	22.6%	20.5%	22.1%
2001-2002	20.0%	24.1%	56.7%	30.1%	10.0%	24.8%	13.3%	20.9%

Anchorage School District: Profile of Performance ..... 2006-2007

Family Partnership TerraNova 7th grade

Percent in each quartile

Reading	Above Average		Average				Below Average	
	4th Quartile (76-99 percentile)		3rd Quartile (51-75 percentile)		2nd Quartile (26-50 percentile)		1st Quartile (1-25 percentile)	
	School	District	School	District	School	District	School	District
2006-2007	65.7%	35.6%	17.1%	28.0%	8.6%	21.5%	8.6%	14.9%
2005-2006	52.5%	34.6%	25.0%	28.4%	15.0%	21.8%	7.5%	15.3%
2004-2005	41.3%	33.9%	37.0%	27.1%	13.0%	21.7%	8.7%	17.4%
2003-2004	50.0%	35.1%	26.1%	28.2%	13.0%	21.4%	10.9%	15.3%
2002-2003	61.4%	35.3%	13.6%	28.9%	22.7%	20.1%	2.3%	15.7%
2001-2002	57.6%	34.4%	12.1%	28.6%	21.2%	20.9%	9.1%	16.2%

Language	Above Average		Average				Below Average	
	4th Quartile (76-99 percentile)		3rd Quartile (51-75 percentile)		2nd Quartile (26-50 percentile)		1st Quartile (1-25 percentile)	
	School	District	School	District	School	District	School	District
2006-2007	68.6%	35.4%	14.3%	28.7%	8.6%	21.5%	8.6%	14.3%
2005-2006	45.0%	34.9%	27.5%	28.4%	15.0%	21.4%	12.5%	15.3%
2004-2005	45.7%	34.4%	21.7%	28.2%	21.7%	20.5%	10.9%	16.9%
2003-2004	47.8%	35.3%	37.0%	28.5%	4.3%	21.7%	10.9%	14.5%
2002-2003	47.7%	34.2%	20.5%	29.8%	18.2%	22.0%	13.6%	14.0%
2001-2002	39.4%	34.0%	39.4%	29.7%	6.1%	20.6%	15.2%	15.7%

Math	Above Average		Average				Below Average	
	4th Quartile (76-99 percentile)		3rd Quartile (51-75 percentile)		2nd Quartile (26-50 percentile)		1st Quartile (1-25 percentile)	
	School	District	School	District	School	District	School	District
2006-2007	42.4%	31.5%	24.2%	28.3%	24.2%	23.0%	9.1%	17.2%
2005-2006	38.5%	31.4%	25.6%	27.8%	17.9%	23.4%	17.9%	17.4%
2004-2005	26.1%	29.7%	17.4%	26.4%	34.8%	22.9%	21.7%	20.9%
2003-2004	30.4%	30.2%	26.1%	27.6%	28.3%	23.9%	15.2%	18.4%
2002-2003	33.3%	31.2%	26.7%	26.9%	22.2%	23.1%	17.8%	18.8%
2001-2002	29.4%	29.7%	32.4%	27.5%	23.5%	22.9%	14.7%	19.9%

.The total number of students in this category is less than 5. Rates were not calculated because of instability caused by small numbers.

**Student Survey Results**

\* The response rate is not high enough to provide statistically reliable results.

**Staff Survey Results**

\* The response rate is not high enough to provide statistically reliable results.

**Parent/Guardian Survey Results**

\* The response rate is not high enough to provide statistically reliable results.