

Highland Tech School Overview

Statement of Program

Highland Tech High is a technology-based, public charter school for grades 7-12 in the Anchorage School District. HTH equips students with the academic, social and technical skills to excel in today’s world and contribute positively to our society and the future. Students who graduate from HTH are able to choose their future, whatever that choice may be. HTH immerses students in a rigorous learning environment that integrates technical and academic education, and links students in the school to industry mentors in the workplace.

From the School Report Card

SCHOOL GOALS

Goal	Level of Achievement
Increase student achievement on the state math assessments by 10 percent.	Partially Attained
Increase the level and quality of shared-leadership activities based on goals and criteria.	Attained

From the School Report Card

BUDGET*

2005-2006 Actual Expenditures	\$2,016,922
2006-2007 Revised Budgeted Amount	\$2,240,451
2007-2008 Proposed Budget	\$2,145,255
*Dollars budgeted or expended are general fund only.	

From IFAS

Highland Tech School Characteristics

	School	District	Source of Information
Membership	272	49,230	Fall OASIS
Capacity (7 -12)	N/A	N/A	Board Report - #202 3/12/07
Attendance Rate	97.4%	92.5%	NCLB Summer Data Collection
Retention Rate K-8	0.0%	1.0%	SMS and NCLB Summer Data Collection
Transiency Rate	24.2%	26.8%	NCLB Summer Data Collection
Economically Disadvantaged	88	18,325	Fall OASIS
Ave. Weekly Volunteer Hours	8	5,111	Dept of Ed Report Card Report
Graduation Rate	45.61%	64.99%	NCLB Summer Data Collection & A&E Graduation File
Dropout Rate - EED's Regulation Calculation	2.57%	5.10%	NCLB Summer Data Collection and Fall Oasis
AP courses offered in 2006-2007	0	168	SMS transcript file
Students successfully completing AP courses	0	1,451	SMS transcript file
AP courses completed by students	0	2,807	SMS transcript file
Students Taking the Alternate Assessment	0	230	SMS
# of students approved for an HSGQE Alternative Assessment (Gr. 11-12)	1	413	SMS
# of students meeting HSGQE requirement using an alternative assessment (Gr. 11-12)	1	201	SMS
Change in Enrollment	-5.2%	-1.0%	Fall Oasis

Teacher Qualification				
# of teachers	% fully licensed	% with advanced degrees	# Nationally Board Certified	% of classes taught by "highly qualified teachers"
14	100%	54%	0	91%

SCHOOL BUSINESS PARTNERSHIPS	
GCI University of Alaska Davis and Davis	Apple Computer, Inc. Russian Jack Park Kigluait Educational Adventures

From the School Report Card

ACCREDITATION		
Initial Accreditation	Name of Accrediting Organization	Level of Accreditation
Not accredited	Northwest Association of Accredited Schools	

Highland Tech School Characteristics Continued

ETHNICITY REPORT - OCTOBER 2006						
White	Black	AK Native/ American Indian	Asian/ Pac. Islander	Hispanic	2 or more races	Total
156	29	54	11	9	13	272

From Fall Oasis

FULL ACADEMIC YEAR (FAY)		
Students Enrolled	Students Enrolled for FAY	Percent FAY
164	150	91.5%

From participation file (3-10 graders)

TOTAL DROPOUT RATE - EED'S REGULATION CALCULATION							
Data Type	AK Native/ American Indian	Asian/ Pac. Islander	Black	Hispanic	White	2 or more races	Total
Enrollment	54	11	29	9	156	13	272
Final Dropouts	1	0	0	0	6	0	7
% of Dropouts	1.85%	0.00%	0.00%	0.00%	3.85%	0.00%	2.57%

From NCLB Summer Data Collection and Fall OASIS

**Anchorage School District
2006-2007 Adequate Yearly Progress - Anchorage Status Report**

Highland Tech Charter School

AMO For Language Arts: 71.48%
AMO For Math: 57.61%

**Does Not Meet AYP
Level 3**

Group	Participation Rate			"FAY"	Language Arts Performance				Math Performance				
	(A) Number Enrolled	(B) Number Tested	(C) Participation Rate (%)	(D) Participation Rate Met	(D) Tested and Enrolled "FAY"	(E) Proficient on LA	(F) Percent Proficient on LA	(G) LA Target	(H) Met AMO for LA	(I) Proficient on Math	(J) Percent Proficient in Math	(K) Math Target	(L) Met AMO for Math
All Students	164	163	99.4%	Yes	149	118	79.2%	62.9%	Yes	88	59.1%	48.2%	Yes
African American	16	16	N/A	N/A	N/A	N/A	N/A	N/A	N/A	N/A	N/A	N/A	N/A
AkNa & Amln	37	37	100%	Yes	29	19	65.5%	51.9%	Yes	14	48.3%	36.2%	Yes
Asian	10	10	N/A	N/A	N/A	N/A	N/A	N/A	N/A	N/A	N/A	N/A	N/A
Caucasian	86	85	98.8%	Yes	80	66	82.5%	59.7%	Yes	54	67.5%	44.7%	Yes
Hispanic	6	6	N/A	N/A	N/A	N/A	N/A	N/A	N/A	N/A	N/A	N/A	N/A
Multi-Ethnic	9	9	N/A	N/A	N/A	N/A	N/A	N/A	N/A	N/A	N/A	N/A	N/A
Low Income	61	61	100%	Yes	53	38	71.7%	57%	Yes	21	39.6%	41.8%	No
Disabled	23	23	100%	Yes	N/A	N/A	N/A	N/A	N/A	N/A	N/A	N/A	N/A
LEP	21	20	95.2%	Yes	N/A	N/A	N/A	N/A	N/A	N/A	N/A	N/A	N/A

Graduation Rate: Met 45.6% (IMP) (Threshold is 55.58%)

N/A is used to indicate:

(1) Subgroups with 20 or fewer students enrolled on the first day of testing shall not be included in participation rate calculation.

(2) Subgroups with 25 or fewer students enrolled for the "full academic year" shall not have the performance score computed.

* For the groups where the number enrolled is less than or equal to 40, participation is met when no more than 2 miss the test. Groups can also meet this target using the average of the past two or three years.

** Where a group achieves a "Yes" without meeting the listed target, it has done so using either the 99% confidence interval or Safe Harbor.

*** Results cannot be published without releasing personally identifiable information.

This document was prepared by the ASD Assessment and Evaluation 7/30/2007

**Anchorage School District
2006-2007 Adequate Yearly Progress - Growth Report**

Does Not Meet AYP
Does Not Meet Growth
Level 3

Highland Tech Charter School

AMO For Language Arts: 71.48%
AMO For Math: 57.61%

Group	"FAY"	Language Arts Performance				Math Performance			
		(D) Tested and Enrolled "FAY"	(E) Number of Students Proficient or on Track to Proficiency on LA	(F) Percent Proficient or on Track to Proficiency on LA	(G) LA Target	(H) Met AMO for LA	(I) Number of Students Proficient or on Track to Proficiency on Math	(J) Percent Proficient or on Track to Proficiency on Math	(K) Math Target
All Students	149	125	83.9%	71.48%	Yes	101	67.8%	57.61%	Yes
African American	N/A	N/A	N/A	N/A	N/A	N/A	N/A	N/A	N/A
AkNa & AmIn	29	22	75.9%	71.48%	Yes	17	58.6%	57.61%	Yes
Asian	N/A	N/A	N/A	N/A	N/A	N/A	N/A	N/A	N/A
Caucasian	80	***	95% or less	71.48%	Yes	59	73.8%	57.61%	Yes
Hispanic	N/A	N/A	N/A	N/A	N/A	N/A	N/A	N/A	N/A
Multi-Ethnic	N/A	N/A	N/A	N/A	N/A	N/A	N/A	N/A	N/A
Low Income	53	43	81.1%	71.48%	Yes	30	56.6%	57.61%	No
Disabled	N/A	N/A	N/A	N/A	N/A	N/A	N/A	N/A	N/A
LEP	N/A	N/A	N/A	N/A	N/A	N/A	N/A	N/A	N/A

Participation Rate: Met

Other Indicator: Not Met

N/A is used to indicate:

- (1) Subgroups with 20 or fewer students enrolled on the first day of testing shall not be included in participation rate calculation.
- (2) Subgroups with 25 or fewer students enrolled for the "full academic year" shall not have the performance score computed.

* For the groups where the number enrolled is less than or equal to 40, participation is met when no more than 2 miss the test. Groups can also meet this target using the average of the past two or three years.

*** Results cannot be published without releasing personally identifiable information.

This document was prepared by the ASD Assessment and Evaluation Department.

9/14/2007

Anchorage School District: Profile of Performance 2006-2007

Highland Tech HSGQE - 10th Grade Results

Reading	Proficient		Not Proficient	
	School	District	School	District
2006-2007	*	91.4%	*	8.6%
2005-2006	82.4%	76.4%	17.6%	23.6%
2004-2005	65.4%	72.5%	34.6%	27.5%
2003-2004	81.3%	73.3%	18.8%	26.7%

Writing	Proficient		Not Proficient	
	School	District	School	District
2006-2007	*	82.5%	*	17.5%
2005-2006	84.6%	90.8%	15.4%	9.2%
2004-2005	70.4%	85.6%	29.7%	14.4%
2003-2004	93.6%	87.0%	6.4%	13.0%

Math	Proficient		Not Proficient	
	School	District	School	District
2006-2007	91.9%	82.3%	8.1%	17.7%
2005-2006	80.4%	79.9%	19.6%	20.1%
2004-2005	61.5%	76.3%	38.5%	14.4%
2003-2004	74.5%	69.8%	25.5%	30.2%

Highland Tech HSGQE Cumulative Proficiency for Grade 11 and Grade 12 Students (Spring 2007)

Grade 11			Grade 12		
Subtest	Number	Percent	Subtest	Number	Percent
Reading	34	91.9%	Reading	34	100.0%
Writing	34	91.9%	Writing	34	100.0%
Math	34	91.9%	Math	33	97.1%

* The total number of students tested in this category is fewer than 5. Results cannot be reported according to the state's protocol for reporting results. If students in a cell equal 0, 1 or 2 the cell and its corresponding cell are suppressed as of 2006-2007.

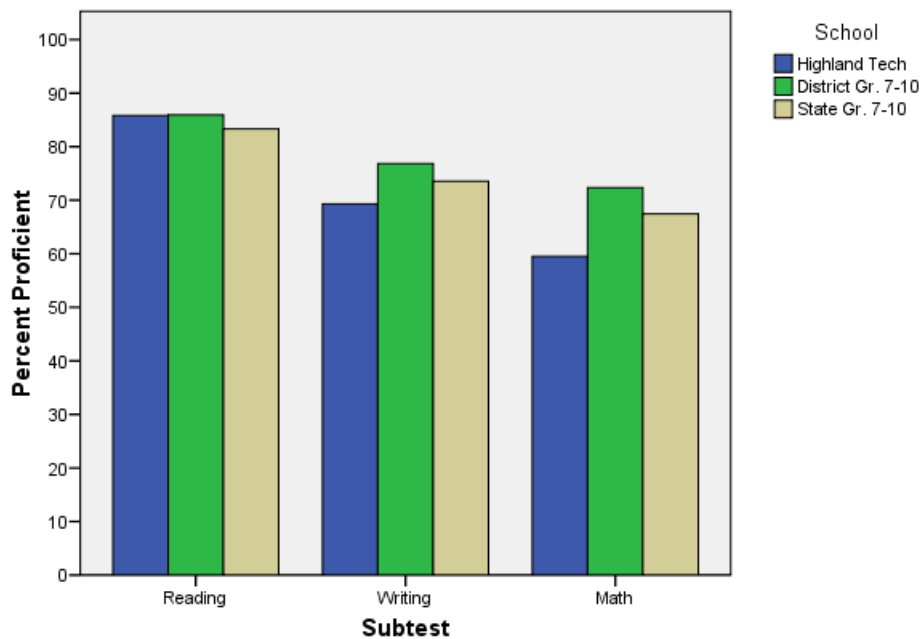
The State Board of Education & Early Development approved two recommended changes to the passing scores, often called "cut scores," for the Alaska High School Graduation Qualifying Examination in July 2006. The changes in the cut scores went into effect for the Fall 2006 HSGQE test administration. The reading cut score was lowered, the writing cut score went up and the math cut score was not changed. The state board moved the cut for the reading test from 322 to 287 partly because the test now contains more reading passages at a higher level. The state board raised the cut score for the writing test from 275 to 304.

SBA Proficiency Comparison by Grade for Highland Tech

		Subtest					
		Reading		Writing		Math	
		Year		Year		Year	
		2005-2006	2006-2007	2005-2006	2006-2007	2005-2006	2006-2007
		Percent Proficient	Percent Proficient	Percent Proficient	Percent Proficient	Percent Proficient	Percent Proficient
Category	All Students	80.68%	85.80%	72.47%	69.33%	54.80%	59.51%
	7th Grade	73.91%	77.42%	68.09%	65.63%	59.57%	59.38%
	8th Grade	78.05%	86.79%	63.41%	64.15%	53.66%	62.26%
	9th Grade	86.84%	78.05%	86.84%	63.41%	44.74%	51.22%
	10th Grade	84.31%		73.08%	86.49%	58.82%	64.86%

. Data is suppressed based on Alaska Department of Education and Early Development Protocol

2007 SBA Results Compared for Highland Tech, District, & State



Anchorage School District: Profile of Performance 2006-2007

SBA 2007 Proficient & Not Proficient by NCLB Groups for Highland Tech

	Subtest					
	Reading		Writing		Math	
	Year		Year		Year	
	2006-2007		2006-2007		2006-2007	
	Percent Proficient	Percent Not Proficient	Percent Proficient	Percent Not Proficient	Percent Proficient	Percent Not Proficient
All Students	85.80%	14.20%	69.33%	30.67%	59.51%	40.49%
Black	75.00%	25.00%	62.50%	37.50%	37.50%	62.50%
Alaska Native / American Indian	75.68%	24.32%	51.35%	48.65%	48.65%	51.35%
Asian / Pacific Islander	70.00%	30.00%
White	91.67%	8.33%	76.47%	23.53%	69.41%	30.59%
Hispanic	50.00%	50.00%
2 or More Races	66.67%	33.33%	55.56%	44.44%	44.44%	55.56%
Low Income	81.97%	18.03%	62.30%	37.70%	44.26%	55.74%
Not Low Income	88.12%	11.88%	73.53%	26.47%	68.63%	31.37%
Disabled	73.91%	26.09%	69.57%	30.43%	43.48%	56.52%
Not Disabled	87.77%	12.23%	69.29%	30.71%	62.14%	37.86%
LEP	85.00%	15.00%	55.00%	45.00%	60.00%	40.00%
Not LEP	85.92%	14.08%	71.33%	28.67%	59.44%	40.56%
Migrant	.	.	50.00%	50.00%	42.86%	57.14%
Not Migrant	85.81%	14.19%	71.14%	28.86%	61.07%	38.93%
Female	82.35%	17.65%	72.46%	27.54%	55.07%	44.93%
Male	88.30%	11.70%	67.02%	32.98%	62.77%	37.23%

. Data is suppressed based on Alaska Department of Education and Early Development Protocol

Anchorage School District: Profile of Performance 2006-2007

SBA Mean Scale Score Comparison by NCLB Groups for Highland Tech

		Subtest					
		Reading		Writing		Math	
		Year		Year		Year	
		2005-2006	2006-2007	2005-2006	2006-2007	2005-2006	2006-2007
		Mean Scale Score	Mean Scale Score	Mean Scale Score	Mean Scale Score	Mean Scale Score	Mean Scale Score
Category	All Students	358.03	373.51	341.82	331.74	306.69	318.49
	Black	301.67	354.81	276.67	322.44	263.61	290.06
	Alaska Native / American Indian	333.55	344.54	327.88	303.54	291.58	296.11
	Asian / Pacific Islander	396.14	412.80	375.14	367.70	321.29	362.40
	White	370.86	382.82	353.23	339.14	319.11	330.15
	Hispanic	377.38	433.17	359.00	390.17	302.13	327.17
	2 or More Races	369.29	355.44	351.00	315.44	294.86	296.33
	Low Income	329.14	354.75	308.93	315.84	283.86	300.15
	Not Low Income	367.66	384.83	352.62	341.25	314.24	329.46
	Disabled	313.38	349.57	307.37	309.96	278.70	293.83
	Not Disabled	365.77	377.47	347.98	335.32	311.73	322.54
	LEP	329.46	366.10	327.00	316.35	276.15	326.05
	Not LEP	360.31	374.55	342.99	333.90	309.11	317.43
	Migrant	335.25	345.79	317.13	304.57	280.13	291.86
	Not Migrant	359.11	376.13	342.98	334.30	307.95	320.99
	Female	351.19	360.71	356.35	336.99	295.33	310.88
	Male	362.55	382.77	332.18	327.89	314.12	324.07

Highland Tech SBA Growth in Average Scale Score by NCLB Groups: Reading

		Average Scale Score of Students Tested in District Both Years			Average Scale Score of Students Tested in District Both Years		
		Grade 6 in 2006	Grade 7 in 2007	Difference	Grade 7 in 2006	Grade 8 in 2007	Difference
Ethnicity	All Students	346.74	353.20	6.46	346.68	369.35	22.67
	Black	*	*	*	323.80	350.83	27.03
	AK Native/ American Indian	303.73	318.00	14.27	324.22	347.56	23.33
	Asian	380.67	395.00	14.33	*	*	*
	White	377.23	374.92	-2.31	352.16	372.54	20.38
	Hispanic	*	*	*	408.50	429.50	21.00
	2 or More Races	*	*	*	297.20	342.20	45.00
Low Income	Yes	336.69	352.15	15.46	325.00	356.68	31.68
	No	354.00	354.00	0.00	363.71	378.63	14.92
Disabled	Yes	*	*	*	335.88	377.78	41.90
	No	351.21	357.89	6.69	348.74	367.58	18.84
LEP	Yes	331.17	360.83	29.67	298.29	353.86	55.57
	No	350.48	351.29	0.81	354.56	371.76	17.20
Migrant	Yes	296.67	314.33	17.67	337.67	356.83	19.17
	No	352.11	357.52	5.41	347.91	370.98	23.07
Gender	Female	326.00	336.60	10.60	339.64	365.59	25.95
	Male	368.87	369.80	0.93	352.21	372.10	19.89

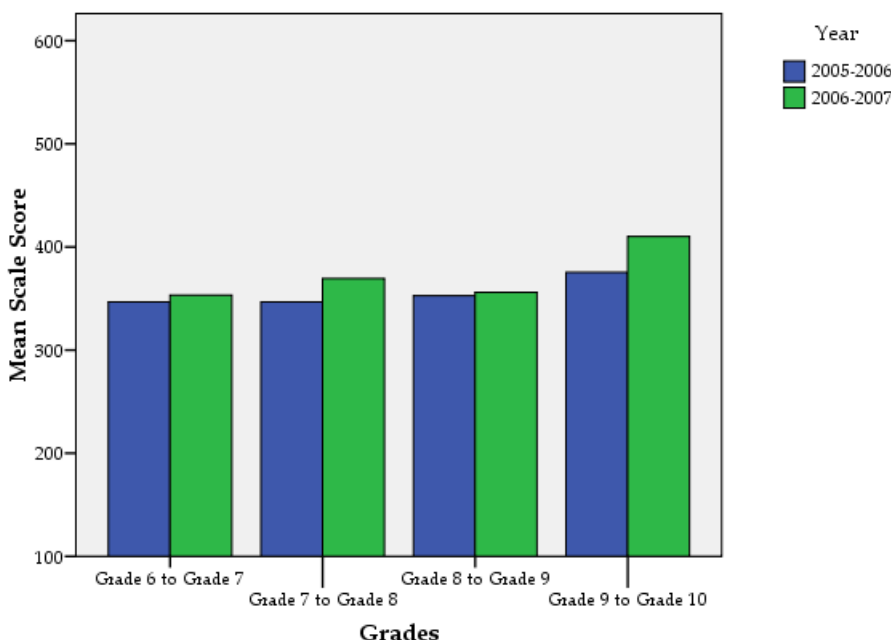
* Data is suppressed based on Alaska Department of Education and Early Development Protocol

Highland Tech SBA Growth in Average Scale Score by NCLB Groups: Reading

		Average Scale Score of Students Tested in District Both Years			Average Scale Score of Students Tested in District Both Years		
		Grade 8 in 2006	Grade 9 in 2007	Difference	Grade 9 in 2006	Grade 10 in 2007	Difference
Ethnicity	All Students	352.78	356.03	3.24	375.42	410.16	34.74
	Black	327.40	329.60	2.20	366.00	391.33	25.33
	AK Native/ American Indian	331.60	332.60	1.00	326.60	397.80	71.20
	Asian	*	*	*	363.00	410.33	47.33
	White	362.11	366.63	4.53	389.26	415.11	25.84
	Hispanic	*	*	*	*	*	*
	2 or More Races	*	*	*	*	*	*
Low Income	Yes	340.35	343.94	3.59	336.14	371.29	35.14
	No	363.35	366.30	2.95	386.88	421.50	34.63
Disabled	Yes	310.71	325.71	15.00	312.80	357.00	44.20
	No	362.60	363.10	0.50	387.46	420.38	32.92
LEP	Yes	359.25	375.50	16.25	*	*	*
	No	352.00	353.67	1.67	378.76	413.07	34.31
Migrant	Yes	356.00	360.25	4.25	*	*	*
	No	352.39	355.52	3.12	378.10	413.30	35.20
Gender	Female	321.62	336.92	15.31	361.40	392.20	30.80
	Male	369.67	366.38	-3.29	388.56	427.00	38.44

* Data is suppressed based on Alaska Department of Education and Early Development Protocol

Growth in Mean Scale Score in Reading by Grade for Highland Tech between 2005-2006 and 2006-2007



Highland Tech SBA Growth in Average Scale Score by NCLB Groups: Writing

		Average Scale Score of Students Tested in District Both Years			Average Scale Score of Students Tested in District Both Years		
		Grade 6 in 2006	Grade 7 in 2007	Difference	Grade 7 in 2006	Grade 8 in 2007	Difference
Ethnicity	All Students	337.29	322.19	-15.10	323.67	323.69	0.02
	Black	*	*	*	308.33	319.50	11.17
	AK Native/ American Indian	303.27	288.18	-15.09	326.22	299.11	-27.11
	Asian	369.00	359.33	-9.67	*	*	*
	White	365.62	346.38	-19.23	319.31	320.96	1.65
	Hispanic	*	*	*	376.25	406.50	30.25
	2 or More Races	*	*	*	298.20	290.80	-7.40
Low Income	Yes	333.00	316.92	-16.08	313.00	307.86	-5.14
	No	340.39	326.00	-14.39	331.50	335.30	3.80
Disabled	Yes	*	*	*	321.22	327.33	6.11
	No	341.10	328.66	-12.45	324.19	322.93	-1.26
LEP	Yes	325.83	326.33	0.50	295.71	295.71	0.00
	No	340.04	321.20	-18.84	328.02	328.04	0.02
Migrant	Yes	311.33	299.33	-12.00	307.83	294.50	-13.33
	No	340.07	324.64	-15.43	325.74	327.50	1.76
Gender	Female	328.13	320.31	-7.81	344.27	336.68	-7.59
	Male	347.07	324.20	-22.87	308.57	314.17	5.60

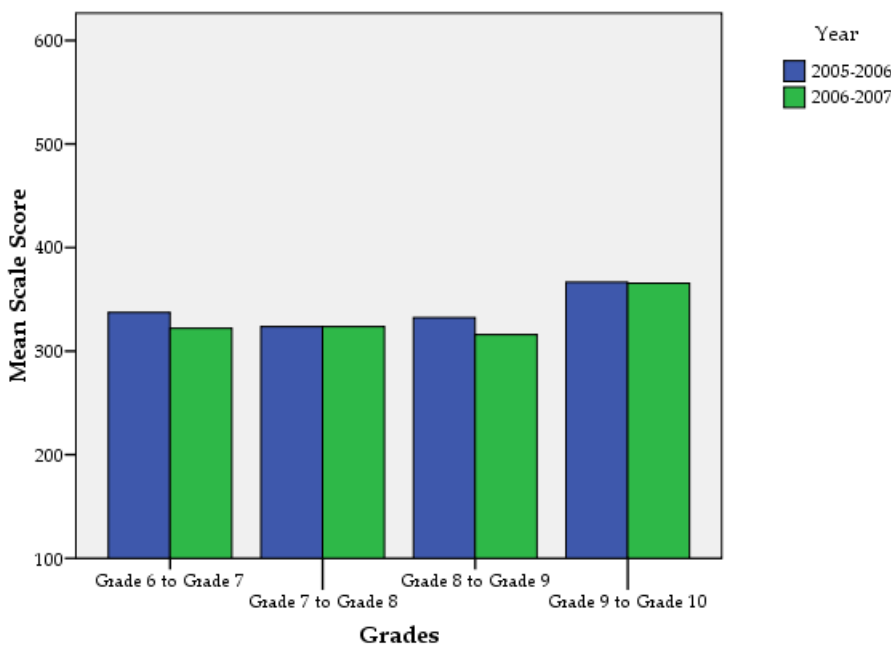
* Data is suppressed based on Alaska Department of Education and Early Development Protocol

Highland Tech SBA Growth in Average Scale Score by NCLB Groups: Writing

		Average Scale Score of Students Tested in District Both Years			Average Scale Score of Students Tested in District Both Years		
		Grade 8 in 2006	Grade 9 in 2007	Difference	Grade 9 in 2006	Grade 10 in 2007	Difference
Ethnicity	All Students	332.38	315.97	-16.41	366.65	365.61	-1.03
	Black	269.60	292.40	22.80	316.00	368.67	52.67
	AK Native/ American Indian	313.10	294.60	-18.50	357.40	339.20	-18.20
	Asian	*	*	*	341.67	362.00	20.33
	White	346.37	323.00	-23.37	380.16	371.05	-9.11
	Hispanic	*	*	*	*	*	*
	2 or More Races	*	*	*	*	*	*
Low Income	Yes	315.53	307.12	-8.41	331.29	342.29	11.00
	No	346.70	323.50	-23.20	376.96	372.42	-4.54
Disabled	Yes	289.29	290.00	0.71	326.80	339.20	12.40
	No	342.43	322.03	-20.40	374.31	370.69	-3.62
LEP	Yes	365.00	319.75	-45.25	*	*	*
	No	328.42	315.52	-12.91	369.00	367.90	-1.10
Migrant	Yes	346.75	327.00	-19.75	*	*	*
	No	330.64	314.64	-16.00	368.57	368.10	-0.47
Gender	Female	301.69	307.08	5.38	365.27	371.67	6.40
	Male	349.00	320.79	-28.21	367.94	359.94	-8.00

* Data is suppressed based on Alaska Department of Education and Early Development Protocol

Growth in Mean Scale Score in Writing by Grade for Highland Tech between 2005-2006 and 2006-2007



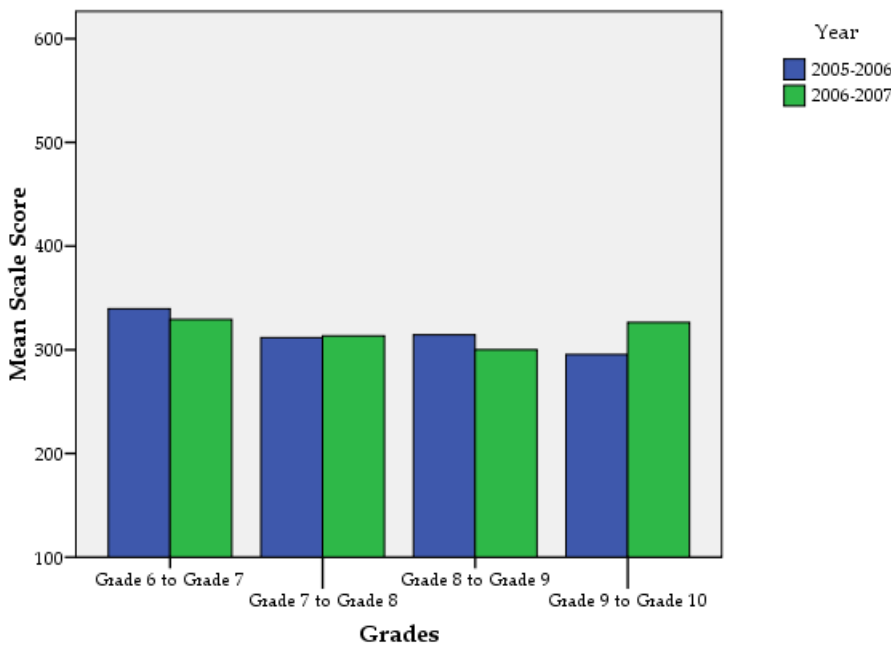
Highland Tech SBA Growth in Average Scale Score by NCLB Groups: Math

		Average Scale Score of Students Tested in District Both Years			Average Scale Score of Students Tested in District Both Years		
		Grade 6 in 2006	Grade 7 in 2007	Difference	Grade 7 in 2006	Grade 8 in 2007	Difference
Ethnicity	All Students	339.48	329.19	-10.29	311.60	313.38	1.79
	Black	*	*	*	295.33	300.00	4.67
	AK Native/ American Indian	300.27	286.82	-13.45	316.89	314.78	-2.11
	Asian	393.33	390.00	-3.33	*	*	*
	White	377.31	363.46	-13.85	310.31	313.92	3.62
	Hispanic	*	*	*	350.75	330.00	-20.75
	2 or More Races	*	*	*	277.00	280.40	3.40
Low Income	Yes	321.08	322.08	1.00	295.50	293.23	-2.27
	No	352.78	334.33	-18.44	323.40	328.17	4.77
Disabled	Yes	*	*	*	307.89	312.44	4.56
	No	345.79	335.38	-10.41	312.37	313.58	1.21
LEP	Yes	337.17	350.67	13.50	274.71	302.86	28.14
	No	340.04	324.04	-16.00	317.33	315.02	-2.31
Migrant	Yes	293.00	281.67	-11.33	282.50	288.50	6.00
	No	344.46	334.29	-10.18	315.39	316.63	1.24
Gender	Female	321.19	313.56	-7.63	314.50	307.14	-7.36
	Male	359.00	345.87	-13.13	309.47	317.97	8.50

Highland Tech SBA Growth in Average Scale Score by NCLB Groups: Math

		Average Scale Score of Students Tested in District Both Years			Average Scale Score of Students Tested in District Both Years		
		Grade 8 in 2006	Grade 9 in 2007	Difference	Grade 9 in 2006	Grade 10 in 2007	Difference
Ethnicity	All Students	314.32	300.16	-14.16	295.35	326.42	31.06
	Black	244.20	265.20	21.00	259.33	297.67	38.33
	AK Native/ American Indian	286.40	283.20	-3.20	300.20	308.00	7.80
	Asian	*	*	*	281.67	330.33	48.67
	White	342.05	313.89	-28.16	301.84	333.37	31.53
	Hispanic	*	*	*	*	*	*
	2 or More Races	*	*	*	*	*	*
Low Income	Yes	290.88	290.00	-0.88	256.00	290.57	34.57
	No	334.25	308.80	-25.45	306.83	336.88	30.04
Disabled	Yes	295.71	281.86	-13.86	264.60	298.80	34.20
	No	318.67	304.43	-14.23	301.27	331.73	30.46
LEP	Yes	327.75	316.25	-11.50	*	*	*
	No	312.70	298.21	-14.48	294.41	325.21	30.79
Migrant	Yes	310.25	305.75	-4.50	*	*	*
	No	314.82	299.48	-15.33	295.87	327.73	31.87
Gender	Female	274.31	279.38	5.08	294.27	327.93	33.67
	Male	336.00	311.42	-24.58	296.38	325.00	28.63

Growth in Mean Scale Score in Math by Grade for Highland Tech between 2005-2006 and 2006-2007



Anchorage School District: Profile of Performance 2006-2007

2007 SBA Results Compared for Highland Tech, District and State

Reading	Highland Tech	District Gr. 7-10	State Gr. 7-10	Highland Tech	District Gr. 7-10	State Gr. 7-10	Highland Tech	District Gr. 7-10	State Gr. 7-10	Highland Tech	District Gr. 7-10	State Gr. 7-10	Highland Tech	District Gr. 7-10	State Gr. 7-10
	% Advanced Proficient			% Proficient			% Below Proficient			% Far Below Proficient			% Tested		
All Students	37.04%	42.14%	38.41%	48.77%	43.81%	44.90%	11.73%	11.62%	13.71%	2.47%	2.43%	2.98%	98.78%	96.56%	96.13%
Black	31.25%	25.78%	24.52%	43.75%	51.21%	53.57%	.	19.25%	18.66%	.	3.76%	3.25%	100.00%	95.63%	95.50%
Alaska Native/American Indian	13.51%	24.66%	17.83%	62.16%	48.20%	48.65%	.	21.43%	26.73%	.	5.71%	6.78%	100.00%	94.98%	95.09%
Asian/Pacific Islander	70.00%	28.17%	31.93%	30.00%	51.96%	50.30%	.	16.53%	15.08%	.	3.34%	2.69%	100.00%	96.34%	96.70%
White	41.67%	53.73%	49.95%	50.00%	38.97%	41.33%	4.76%	6.19%	7.38%	3.57%	1.12%	1.33%	97.67%	97.23%	96.65%
Hispanic	.	28.15%	29.29%	.	51.13%	51.78%	.	17.00%	15.57%	.	3.72%	3.36%	100.00%	95.48%	94.99%
2 or More Races	33.33%	31.67%	34.03%	33.33%	47.44%	48.58%	.	17.79%	14.47%	.	3.10%	2.92%	100.00%	96.48%	96.46%
Low Income	24.59%	22.66%	22.24%	57.38%	51.50%	49.91%	.	20.57%	22.39%	.	5.27%	5.46%	100.00%	94.42%	95.09%
Not Low Income	44.55%	52.19%	47.89%	43.56%	39.84%	41.96%	7.92%	7.00%	8.62%	3.96%	0.97%	1.53%	98.06%	97.71%	96.75%
Disabled	21.74%	7.73%	6.72%	52.17%	39.56%	38.10%	.	38.32%	39.42%	.	14.39%	15.76%	100.00%	89.41%	89.38%
Not Disabled	39.57%	46.40%	42.38%	48.20%	44.33%	45.75%	10.07%	8.31%	10.49%	2.16%	0.95%	1.38%	98.58%	97.53%	97.05%
LEP	30.00%	15.42%	9.83%	55.00%	54.93%	49.53%	.	24.33%	32.50%	.	5.32%	8.13%	95.24%	94.62%	95.29%
Not LEP	38.03%	46.90%	43.42%	47.89%	41.83%	44.09%	11.27%	9.36%	10.41%	2.82%	1.92%	2.08%	99.30%	96.92%	96.28%
Migrant	.	24.80%	21.30%	.	49.60%	47.83%	.	20.24%	25.87%	.	5.36%	5.00%	100.00%	95.09%	96.42%
Not Migrant	39.86%	42.76%	39.62%	45.95%	43.60%	44.69%	11.49%	11.31%	12.85%	2.70%	2.33%	2.84%	98.67%	96.62%	96.11%
Female	27.94%	46.04%	42.44%	54.41%	43.52%	44.67%	.	8.96%	11.03%	.	1.48%	1.85%	97.14%	96.72%	96.28%
Male	43.62%	38.44%	34.57%	44.68%	44.09%	45.11%	8.51%	14.14%	16.25%	3.19%	3.33%	4.07%	100.00%	96.41%	96.00%

. Suppressed based on Department of Education and Early Development Reporting Protocol

Anchorage School District: Profile of Performance 2006-2007

2007 SBA Results Compared for Highland Tech, District and State

Writing	Highland Tech	District Gr. 7-10	State Gr. 7-10	Highland Tech	District Gr. 7-10	State Gr. 7-10	Highland Tech	District Gr. 7-10	State Gr. 7-10	Highland Tech	District Gr. 7-10	State Gr. 7-10	Highland Tech	District Gr. 7-10	State Gr. 7-10
	% Advanced Proficient			% Proficient			% Below Proficient			% Far Below Proficient			% Tested		
All Students	.	9.03%	7.81%	.	67.83%	65.73%	22.70%	17.22%	19.43%	7.98%	5.93%	7.02%	99.39%	96.50%	96.15%
Black	.	3.05%	3.12%	.	62.33%	62.59%	18.75%	24.48%	24.54%	18.75%	10.13%	9.75%	100.00%	95.46%	95.44%
Alaska Native/American Indian	.	3.19%	2.06%	.	54.20%	51.00%	35.14%	29.56%	32.37%	13.51%	13.05%	14.57%	100.00%	94.42%	95.15%
Asian/Pacific Islander	.	6.52%	6.71%	.	67.44%	70.07%	.	19.69%	17.64%	.	6.35%	5.58%	100.00%	96.06%	96.56%
White	.	12.50%	11.10%	.	72.73%	71.92%	18.82%	11.46%	13.28%	4.71%	3.31%	3.70%	98.84%	97.34%	96.66%
Hispanic	.	4.17%	4.41%	.	63.51%	65.37%	.	24.77%	23.17%	.	7.55%	7.04%	100.00%	95.48%	95.18%
2 or More Races	.	5.67%	6.08%	.	61.81%	64.44%	.	24.56%	21.98%	.	7.96%	7.50%	100.00%	96.35%	96.38%
Low Income	.	3.05%	3.13%	.	56.84%	55.82%	27.87%	28.34%	28.77%	9.84%	11.78%	12.28%	100.00%	94.45%	95.19%
Not Low Income	.	12.12%	10.56%	.	73.51%	71.55%	19.61%	11.46%	13.96%	6.86%	2.90%	3.93%	99.03%	97.59%	96.71%
Disabled	.	0.37%	0.39%	.	29.17%	26.74%	.	40.41%	42.76%	.	30.04%	30.11%	100.00%	89.74%	89.48%
Not Disabled	.	10.11%	8.74%	.	72.64%	70.62%	25.00%	14.33%	16.51%	5.71%	2.92%	4.13%	99.29%	97.41%	97.05%
LEP	.	2.13%	1.13%	.	57.99%	47.00%	.	28.95%	35.48%	.	10.93%	16.39%	95.24%	94.79%	95.44%
Not LEP	.	10.26%	8.98%	.	69.59%	69.02%	20.98%	15.12%	16.62%	7.69%	5.03%	5.38%	100.00%	96.81%	96.27%
Migrant	.	2.57%	2.69%	.	54.65%	53.29%	.	28.91%	31.03%	.	13.86%	12.98%	100.00%	95.28%	96.65%
Not Migrant	.	9.26%	8.17%	.	68.30%	66.61%	21.48%	16.80%	18.62%	7.38%	5.64%	6.60%	99.33%	96.54%	96.11%
Female	.	12.68%	10.97%	.	70.87%	69.80%	20.29%	13.34%	15.36%	7.25%	3.11%	3.87%	98.57%	96.51%	96.30%
Male	.	5.57%	4.80%	.	64.96%	61.86%	24.47%	20.88%	23.31%	8.51%	8.58%	10.03%	100.00%	96.48%	96.00%

. Suppressed based on Department of Education and Early Development Reporting Protocol

Anchorage School District: Profile of Performance 2006-2007

2007 SBA Results Compared for Highland Tech, District and State

Math	Highland Tech	District Gr. 7-10	State Gr. 7-10	Highland Tech	District Gr. 7-10	State Gr. 7-10	Highland Tech	District Gr. 7-10	State Gr. 7-10	Highland Tech	District Gr. 7-10	State Gr. 7-10	Highland Tech	District Gr. 7-10	State Gr. 7-10
	% Advanced Proficient			% Proficient			% Below Proficient			% Far Below Proficient			% Tested		
All Students	13.50%	31.33%	26.59%	46.01%	41.01%	40.86%	25.15%	15.77%	18.60%	15.34%	11.88%	13.95%	99.39%	96.42%	96.10%
Black	.	14.81%	12.87%	.	38.96%	40.15%	37.50%	23.61%	25.18%	25.00%	22.62%	21.80%	100.00%	95.38%	95.44%
Alaska Native/American Indian	.	17.22%	12.38%	.	38.58%	36.20%	27.03%	23.32%	25.97%	24.32%	20.87%	25.46%	100.00%	93.81%	94.90%
Asian/Pacific Islander	40.00%	28.28%	29.29%	30.00%	42.42%	43.01%	.	16.60%	16.62%	.	12.71%	11.09%	100.00%	96.89%	97.44%
White	17.65%	39.67%	34.30%	51.76%	41.41%	42.42%	21.18%	12.06%	14.94%	9.41%	6.87%	8.34%	98.84%	97.10%	96.51%
Hispanic	.	18.39%	18.26%	.	42.03%	42.56%	.	20.51%	21.77%	.	19.06%	17.41%	100.00%	96.45%	96.43%
2 or More Races	.	21.68%	20.99%	.	41.19%	42.89%	.	18.70%	19.11%	.	18.43%	17.01%	100.00%	95.96%	96.10%
Low Income	4.92%	15.36%	14.49%	39.34%	40.37%	38.73%	37.70%	22.45%	24.12%	18.03%	21.81%	22.66%	100.00%	94.61%	95.08%
Not Low Income	18.63%	39.62%	33.69%	50.00%	41.34%	42.10%	17.65%	12.30%	15.36%	13.73%	6.73%	8.84%	99.03%	97.38%	96.71%
Disabled	.	5.48%	3.86%	.	22.22%	20.78%	39.13%	24.39%	26.59%	17.39%	47.92%	48.78%	100.00%	89.52%	89.36%
Not Disabled	15.00%	34.55%	29.44%	47.14%	43.35%	43.37%	22.86%	14.70%	17.60%	15.00%	7.40%	9.59%	99.29%	97.35%	97.02%
LEP	20.00%	16.05%	9.90%	40.00%	40.83%	34.78%	.	21.56%	26.47%	.	21.56%	28.85%	95.24%	95.95%	96.03%
Not LEP	12.59%	34.10%	29.55%	46.85%	41.05%	41.93%	24.48%	14.72%	17.21%	16.08%	10.13%	11.31%	100.00%	96.50%	96.11%
Migrant	.	18.45%	16.09%	.	36.90%	36.20%	.	21.83%	24.70%	.	22.82%	23.01%	100.00%	95.09%	96.27%
Not Migrant	14.77%	31.79%	27.33%	46.31%	41.16%	41.18%	23.49%	15.55%	18.17%	15.44%	11.49%	13.31%	99.33%	96.46%	96.09%
Female	10.14%	30.57%	26.05%	44.93%	42.85%	42.27%	28.99%	16.25%	19.12%	15.94%	10.32%	12.55%	98.57%	96.35%	96.12%
Male	15.96%	32.05%	27.11%	46.81%	39.28%	39.51%	22.34%	15.32%	18.11%	14.89%	13.36%	15.28%	100.00%	96.48%	96.08%

. Suppressed based on Department of Education and Early Development Reporting Protocol

Anchorage School District: Profile of Performance 2006-2007

Highland Tech TerraNova 7th grade

Percent in each quartile

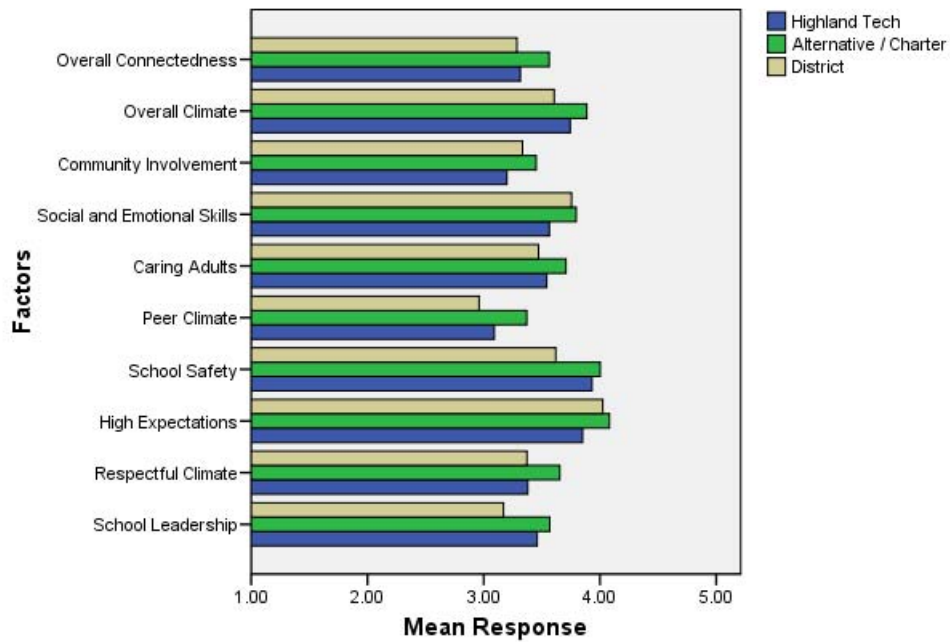
Reading	Above Average		Average				Below Average	
	4th Quartile (76-99 percentile)		3rd Quartile (51-75 percentile)		2nd Quartile (26-50 percentile)		1st Quartile (1-25 percentile)	
	School	District	School	District	School	District	School	District
2006-2007	37.5%	35.6%	25.0%	28.0%	18.8%	21.5%	18.8%	14.9%
2005-2006	30.4%	34.6%	17.4%	28.4%	30.4%	21.8%	21.7%	15.3%
2004-2005	34.0%	33.9%	26.0%	27.1%	20.0%	21.7%	20.0%	17.4%
2003-2004	37.5%	35.1%	32.8%	28.2%	18.8%	21.4%	10.9%	15.3%
2002-2003	N/A	35.3%	N/A	28.9%	N/A	20.1%	N/A	15.7%
2001-2002	N/A	34.4%	N/A	28.6%	N/A	20.9%	N/A	16.2%

Language	Above Average		Average				Below Average	
	4th Quartile (76-99 percentile)		3rd Quartile (51-75 percentile)		2nd Quartile (26-50 percentile)		1st Quartile (1-25 percentile)	
	School	District	School	District	School	District	School	District
2006-2007	31.3%	35.4%	31.3%	28.7%	15.6%	21.5%	21.9%	14.3%
2005-2006	21.7%	34.9%	26.1%	28.4%	26.1%	21.4%	26.1%	15.3%
2004-2005	26.0%	34.4%	32.0%	28.2%	20.0%	20.5%	22.0%	16.9%
2003-2004	26.6%	35.3%	46.9%	28.5%	15.6%	21.7%	10.9%	14.5%
2002-2003	N/A	34.2%	N/A	29.8%	N/A	22.0%	N/A	14.0%
2001-2002	N/A	34.0%	N/A	29.7%	N/A	20.6%	N/A	15.7%

Math	Above Average		Average				Below Average	
	4th Quartile (76-99 percentile)		3rd Quartile (51-75 percentile)		2nd Quartile (26-50 percentile)		1st Quartile (1-25 percentile)	
	School	District	School	District	School	District	School	District
2006-2007	28.1%	31.5%	34.4%	28.3%	12.5%	23.0%	25.0%	17.2%
2005-2006	15.6%	31.4%	33.3%	27.8%	31.1%	23.4%	20.0%	17.4%
2004-2005	16.0%	29.7%	28.0%	26.4%	24.0%	22.9%	32.0%	20.9%
2003-2004	28.1%	30.2%	25.0%	27.6%	32.8%	23.9%	14.1%	18.4%
2002-2003	N/A	31.2%	N/A	26.9%	N/A	23.1%	N/A	18.8%
2001-2002	N/A	29.7%	N/A	27.5%	N/A	22.9%	N/A	19.9%

Student Survey Results

2007 Climate and Connectedness Student Survey - Highland Tech



Each question in the survey related to a factor or concept, and a score was calculated based on the average response for the questions related to each factor. The factors measured in the survey were: (Individual questions provided answer categories of strongly agree, agree, agree some/disagree some, disagree, and strongly disagree; 5 being strongly agree and 1 being strongly disagree)

- **School Leadership and Student Involvement:** This factor reflects students’ feelings about the decision making of school leaders as well as student participation in the school governance.
- **Respectful Climate:** This factor reflects students’ feelings about fairness of rules and respect for students’ contributions.
- **High Expectations:** This factor reflects students’ feelings about their own expectations as well as those of adults in their school and community.
- **School Safety:** This factor reflects students’ feelings about bullies and gangs at school as well as general crime and violence in the community.
- **Peer Climate:** This factor reflects students’ feelings about how respectful students are to one another and how helpful students are to other students.
- **Caring Adults:** This factor reflects students’ feelings about how close they feel to other adults in the school.
- **Social and Emotional Learning:** This factor reflects students’ ability to think about the consequences of their actions and to empathize with others.
- **Community Involvement:** This factor reflects students’ feelings about how supportive and welcoming the school is with parents and the community.
- **Overall Climate:** The Overall Climate score was computed as the average of three scales: School Leadership, High Expectations, and School Safety.
- **Overall Connectedness:** Overall Connectedness score was computed as an average of three scales: Respectful Climate, Peer Climate, and Caring Adults.

Staff Survey Results

* The response rate is not high enough to provide statistically reliable results.

Parent/Guardian Survey Results

* The response rate is not high enough to provide statistically reliable results.