

Polaris School Overview

Statement of Program

Presently in its 13th year of operation, Polaris K-12 School continues to address the need for which it was created: to provide an alternative to the traditional educational format using an open-optional method of instruction. We are pleased with our stable test scores, successful student-led conferences and numerous student scholarships, but of greater importance is the students' commitment to each other and the community at large.

From the School Report Card

SCHOOL GOALS	
Goal	Level of Achievement
The number of students in grade 3 rated as below or far below proficient on the state language arts assessments will decrease by 10 percent.	Attained
The number of students rated below or far below proficient on the state math assessments will decrease by 10 percent.	Attained
Develop citizens who make healthy food choices and understand moderation.	Attained

From the School Report Card

BUDGET*	
2005-2006 Actual Expenditures	\$2,834,285
2006-2007 Revised Budgeted Amount	\$2,952,023
2007-2008 Proposed Budget	\$2,984,160
*Dollars budgeted or expended are general fund only.	

From IFAS

Polaris School Characteristics

	School	District	Source of Information
Membership	478	49,230	Fall OASIS
Capacity (K-6)	105%	N/A	Board Report - #202 3/12/07
Capacity (7 -12)	91%	N/A	Board Report - #202 3/12/07
Attendance Rate	97.1%	92.5%	NCLB Summer Data Collection
Retention Rate K-8	0.6%	1.0%	SMS and NCLB Summer Data Collection
Transiency Rate	8.6%	26.8%	NCLB Summer Data Collection
Economically Disadvantaged	48	18,325	Fall OASIS
Ave. Weekly Volunteer Hours	100	5,111	Dept of Ed Report Card Report
Graduation Rate	94.12%	64.99%	NCLB Summer Data Collection & A&E Graduation File
Dropout Rate - EED's Regulation Calculation	0.84%	5.10%	NCLB Summer Data Collection and Fall Oasis
AP courses offered in 2006-2007	6	168	SMS transcript file
Students successfully completing AP courses	3	1,451	SMS transcript file
AP courses completed by students	5	2,807	SMS transcript file
Students Taking the Alternate Assessment	0	230	SMS
# of students approved for an HSGQE Alternative Assessment (Gr. 11-12)	0	413	SMS
# of students meeting HSGQE requirement using an alternative assessment (Gr. 11-12)	0	201	SMS
Change in Enrollment	5.8%	-1.0%	Fall Oasis

Teacher Qualification				
# of teachers	% fully licensed	% with advanced degrees	# Nationally Board Certified	% of classes taught by "highly qualified teachers"
31	100%	48%	0	74%

SCHOOL BUSINESS PARTNERSHIPS
Schlumberger Oilfield Services Kaladi Brothers Coffee Company Frigid North Co. The National Wildlife Federation Alaska Dinner Factory

From the School Report Card

Polaris School Characteristics Continued

ACCREDITATION		
Initial Accreditation	Name of Accrediting Organization	Level of Accreditation
1994	Northwest Association of Accredited Schools	Approved

ETHNICITY REPORT - OCTOBER 2006						
White	Black	AK Native/ American Indian	Asian/ Pac. Islander	Hispanic	2 or more races	Total
374	8	43	26	13	14	478

From Fall Oasis

FULL ACADEMIC YEAR (FAY)		
Students Enrolled	Students Enrolled for FAY	Percent FAY
291	291	100.0%

From participation file (3-10 graders)

TOTAL DROPOUT RATE - EED'S REGULATION CALCULATION							
Data Type	AK Native/ American Indian	Asian/ Pac. Islander	Black	Hispanic	White	2 or more races	Total
Enrollment	19	11	3	5	197	2	237
Final Dropouts	0	0	0	0	2	0	2
% of Dropouts	0.00%	0.00%	0.00%	0.00%	1.02%	0.00%	0.84%

From NCLB Summer Data Collection and Fall OASIS

Test	Student/Subject	SAT/ACT				
		<u>2002-2003</u>	<u>2003-2004</u>	<u>2004-2005</u>	<u>2005-2006</u>	<u>2006-2007</u>
	Senior Cohort					
SAT	Critical Reading*	571	589	591	607	600
	Math	551	582	558	588	569
	Writing				555	537
ACT	English		19.0	26.5	28.3	28.8
	Math		19.0	22.3	29.7	27.0
	Composite		20.0	25.3	28.3	28.0

*Reported as Verbal Score prior to 2005-2006

**Anchorage School District
2006-2007 Adequate Yearly Progress - Anchorage Status Report**

Polaris K-12 School

AMO For Language Arts: 71.48%
AMO For Math: 57.61%

Meets AYP

Group	Participation Rate			"FAY"	Language Arts Performance				Math Performance				
	(A) Number Enrolled	(B) Number Tested	(C) Participation Rate (%)	(D) Participation Rate Met	(D) Tested and Enrolled "FAY"	(E) Proficient on LA	(F) Percent Proficient on LA	(G) LA Target	(H) Met AMO for LA	(I) Proficient on Math	(J) Percent Proficient in Math	(K) Math Target	(L) Met AMO for Math
All Students	291	290	99.7%	Yes	290	277	95.5%	65.3%	Yes	256	88.3%	50.8%	Yes
African American	7	7	N/A	N/A	N/A	N/A	N/A	N/A	N/A	N/A	N/A	N/A	N/A
AkNa & Amln	29	29	100%	Yes	29	***	90% or more	51.9%	Yes	26	89.7%	36.2%	Yes
Asian	18	18	N/A	N/A	N/A	N/A	N/A	N/A	N/A	N/A	N/A	N/A	N/A
Caucasian	223	222	99.6%	Yes	222	215	96.8%	64.4%	Yes	201	90.5%	49.9%	Yes
Hispanic	7	7	N/A	N/A	N/A	N/A	N/A	N/A	N/A	N/A	N/A	N/A	N/A
Multi-Ethnic	7	7	N/A	N/A	N/A	N/A	N/A	N/A	N/A	N/A	N/A	N/A	N/A
Low Income	22	22	100%	Yes	N/A	N/A	N/A	N/A	N/A	N/A	N/A	N/A	N/A
Disabled	12	12	N/A	N/A	N/A	N/A	N/A	N/A	N/A	N/A	N/A	N/A	N/A
LEP	16	16	N/A	N/A	N/A	N/A	N/A	N/A	N/A	N/A	N/A	N/A	N/A

Graduation Rate: Met

94.1% (Threshold is 55.58%)

N/A is used to indicate:

(1) Subgroups with 20 or fewer students enrolled on the first day of testing shall not be included in participation rate calculation.

(2) Subgroups with 25 or fewer students enrolled for the "full academic year" shall not have the performance score computed.

* For the groups where the number enrolled is less than or equal to 40, participation is met when no more than 2 miss the test. Groups can also meet this target using the average of the past two or three years.

** Where a group achieves a "Yes" without meeting the listed target, it has done so using either the 99% confidence interval or Safe Harbor.

*** Results cannot be published without releasing personally identifiable information.

This document was prepared by the ASD Assessment and Evaluation

7/30/2007

**Anchorage School District
2006-2007 Adequate Yearly Progress - Growth Report**

Meets AYP
Meets Growth

Polaris K-12 School

AMO For Language Arts: 71.48%
AMO For Math: 57.61%

Group	"FAY"	Language Arts Performance				Math Performance			
		(E) Number of Students Proficient or on Track to Proficiency on LA	(F) Percent Proficient or on Track to Proficiency on LA	(G) LA Target	(H) Met AMO for LA	(I) Number of Students Proficient or on Track to Proficiency on Math	(J) Percent Proficient or on Track to Proficiency on Math	(K) Math Target	(L) Met AMO for Math
If there are 20 or fewer students enrolled, value is "N/A"	(D) Tested and Enrolled "FAY"	(E)	(F)	(G)	(H)	(I)	(J)	(K)	(L)
All Students	290	***	95% or more	71.48%	Yes	264	91%	57.61%	Yes
African American	N/A	N/A	N/A	N/A	N/A	N/A	N/A	N/A	N/A
AkNa & AmIn	29	***	90% or more	71.48%	Yes	***	90% or more	57.61%	Yes
Asian	N/A	N/A	N/A	N/A	N/A	N/A	N/A	N/A	N/A
Caucasian	222	***	95% or more	71.48%	Yes	206	92.8%	57.61%	Yes
Hispanic	N/A	N/A	N/A	N/A	N/A	N/A	N/A	N/A	N/A
Multi-Ethnic	N/A	N/A	N/A	N/A	N/A	N/A	N/A	N/A	N/A
Low Income	N/A	N/A	N/A	N/A	N/A	N/A	N/A	N/A	N/A
Disabled	N/A	N/A	N/A	N/A	N/A	N/A	N/A	N/A	N/A
LEP	N/A	N/A	N/A	N/A	N/A	N/A	N/A	N/A	N/A

Participation Rate: Met

Other Indicator: Met

N/A is used to indicate:

- (1) Subgroups with 20 or fewer students enrolled on the first day of testing shall not be included in participation rate calculation.
- (2) Subgroups with 25 or fewer students enrolled for the "full academic year" shall not have the performance score computed.

* For the groups where the number enrolled is less than or equal to 40, participation is met when no more than 2 miss the test. Groups can also meet this target using the average of the past two or three years.

*** Results cannot be published without releasing personally identifiable information.

This document was prepared by the ASD Assessment and Evaluation Department.

9/14/2007

Polaris HSGQE - 10th Grade Results

Reading	Proficient		Not Proficient	
	School	District	School	District
2006-2007	*	91.4%	*	8.6%
2005-2006	100.0%	76.4%	0.0%	23.6%
2004-2005	100.0%	72.5%	0.0%	27.5%
2003-2004	100.0%	73.3%	0.0%	26.7%

Writing	Proficient		Not Proficient	
	School	District	School	District
2006-2007	*	82.5%	*	17.5%
2005-2006	100.0%	90.8%	0.0%	9.2%
2004-2005	100.0%	85.6%	0.0%	14.4%
2003-2004	100.0%	87.0%	0.0%	13.0%

Math	Proficient		Not Proficient	
	School	District	School	District
2006-2007	*	82.3%	*	17.7%
2005-2006	100.0%	79.9%	0.0%	20.1%
2004-2005	96.1%	76.3%	3.8%	14.4%
2003-2004	94.6%	69.8%	5.4%	30.2%

Polaris HSGQE Cumulative Proficiency for Grade 11 and Grade 12 Students (Spring 2007)

Grade 11			Grade 12		
Subtest	Number	Percent	Subtest	Number	Percent
Reading	33	100.0%	Reading	30	100.0%
Writing	33	100.0%	Writing	30	100.0%
Math	33	100.0%	Math	30	100.0%

* The total number of students tested in this category is fewer than 5. Results cannot be reported according to the state’s protocol for reporting results. If students in a cell equal 0, 1 or 2 the cell and its corresponding cell are suppressed as of 2006-2007.

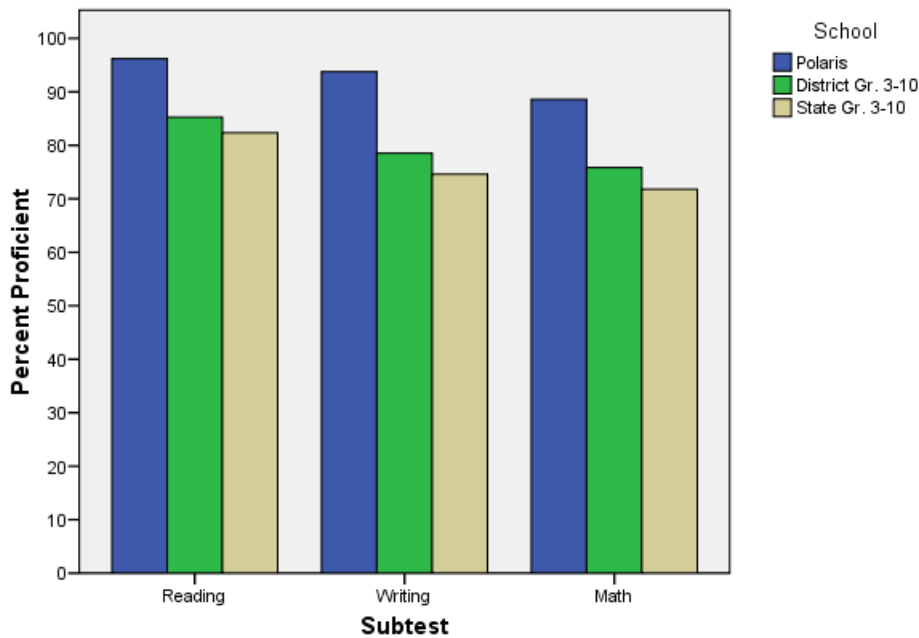
The State Board of Education & Early Development approved two recommended changes to the passing scores, often called “cut scores,” for the Alaska High School Graduation Qualifying Examination in July 2006. The changes in the cut scores went into effect for the Fall 2006 HSGQE test administration. The reading cut score was lowered, the writing cut score went up and the math cut score was not changed. The state board moved the cut for the reading test from 322 to 287 partly because the test now contains more reading passages at a higher level. The state board raised the cut score for the writing test from 275 to 304.

SBA Proficiency Comparison by Grade for Polaris

	Subtest					
	Reading		Writing		Math	
	Year		Year		Year	
	2005-2006	2006-2007	2005-2006	2006-2007	2005-2006	2006-2007
	Percent Proficient	Percent Proficient	Percent Proficient	Percent Proficient	Percent Proficient	Percent Proficient
All Students	96.74%	96.19%	94.57%	93.77%	87.27%	88.58%
3rd Grade	.	83.33%	.	73.33%	.	79.31%
4th Grade	90.32%	.	.	.	87.10%	90.00%
5th Grade	88.00%	91.67%
6th Grade	89.19%	.	91.89%	.	75.68%	.
7th Grade	.	.	94.23%	92.45%	82.69%	81.13%
8th Grade	90.91%	89.13%
9th Grade
10th Grade	88.46%

. Data is suppressed based on Alaska Department of Education and Early Development Protocol

2007 SBA Results Compared for Polaris, District, & State



SBA 2007 Proficient & Not Proficient by NCLB Groups for Polaris

	Subtest					
	Reading		Writing		Math	
	Year		Year		Year	
	2006-2007		2006-2007		2006-2007	
	Percent Proficient	Percent Not Proficient	Percent Proficient	Percent Not Proficient	Percent Proficient	Percent Not Proficient
All Students	96.19%	3.81%	93.77%	6.23%	88.58%	11.42%
Black
Alaska Native / American Indian	89.66%	10.34%
Asian / Pacific Islander
White	97.29%	2.71%	94.57%	5.43%	90.95%	9.05%
Hispanic	42.86%	57.14%
2 or More Races	57.14%	42.86%	57.14%	42.86%	57.14%	42.86%
Low Income	81.82%	18.18%
Not Low Income	96.25%	3.75%	94.01%	5.99%	89.14%	10.86%
Disabled	75.00%	25.00%	58.33%	41.67%	41.67%	58.33%
Not Disabled	97.11%	2.89%	95.31%	4.69%	90.61%	9.39%
LEP	75.00%	25.00%
Not LEP	96.34%	3.66%	93.77%	6.23%	89.38%	10.62%
Migrant
Not Migrant	96.13%	3.87%	93.66%	6.34%	88.73%	11.27%
Female	97.55%	2.45%	96.32%	3.68%	88.34%	11.66%
Male	94.44%	5.56%	90.48%	9.52%	88.89%	11.11%

. Data is suppressed based on Alaska Department of Education and Early Development Protocol

SBA Mean Scale Score Comparison by NCLB Groups for Polaris

	Subtest					
	Reading		Writing		Math	
	Year		Year		Year	
	2005-2006	2006-2007	2005-2006	2006-2007	2005-2006	2006-2007
	Mean Scale Score	Mean Scale Score	Mean Scale Score	Mean Scale Score	Mean Scale Score	Mean Scale Score
All Students	417.17	423.49	405.38	408.72	377.76	375.25
Black	411.67	413.43	395.00	401.00	354.33	347.14
Alaska Native / American Indian	414.29	416.52	400.75	404.31	359.63	363.17
Asian / Pacific Islander	417.33	404.50	413.93	422.50	376.20	377.50
White	417.98	428.09	406.44	410.21	382.56	380.20
Hispanic	406.25	421.29	393.63	397.57	342.88	331.71
2 or More Races	.	368.29	.	363.14	.	334.86
Low Income	381.38	386.27	376.96	384.32	339.09	361.27
Not Low Income	420.58	426.55	408.08	410.73	381.29	376.40
Disabled	346.60	328.33	334.20	311.08	333.80	304.58
Not Disabled	419.82	427.61	408.05	412.95	379.42	378.31
LEP	429.90	402.69	422.40	414.69	394.40	373.00
Not LEP	416.69	424.71	404.74	408.37	377.13	375.38
Migrant	.	379.00	.	378.80	.	369.80
Not Migrant	417.91	424.27	406.18	409.24	378.60	375.35
Female	428.45	429.98	421.96	426.51	376.16	374.94
Male	405.04	415.10	387.55	385.70	379.47	375.66

. Data is suppressed based on Alaska Department of Education and Early Development Protocol

Polaris SBA Growth in Average Scale Score by NCLB groups: Reading

		Average Scale Score of Students Tested in District Both Years			Average Scale Score of Students Tested in District Both Years			Average Scale Score of Students Tested in District Both Years		
		Grade 3 in 2006	Grade 4 in 2007	Difference	Grade 4 in 2006	Grade 5 in 2007	Difference	Grade 5 in 2006	Grade 6 in 2007	Difference
Ethnicity	All Students	441.14	452.50	11.36	422.30	432.73	10.42	423.11	418.56	-4.56
	Black	433.00	405.00	-28.00	*	*	*	*	*	*
	AK Native/ American Indian	*	*	*	440.33	442.33	2.00	412.25	427.25	15.00
	Asian	*	*	*	*	*	*	429.00	395.75	-33.25
	White	450.77	468.41	17.64	428.17	440.50	12.33	424.06	420.06	-4.00
	Hispanic	*	*	*	*	*	*	*	*	*
	2 or More Races	*	*	*	*	*	*	*	*	*
Low Income	Yes	*	*	*	*	*	*	*	*	*
	No	442.54	452.58	10.04	421.56	432.75	11.19	426.40	422.56	-3.84
Disabled	Yes	*	*	*	*	*	*	*	*	*
	No	443.48	454.33	10.85	425.32	435.23	9.90	430.08	424.77	-5.31
LEP	Yes	*	*	*	382.25	381.00	-1.25	436.00	424.67	-11.33
	No	443.85	454.56	10.70	427.83	439.86	12.03	421.50	417.79	-3.71
Migrant	Yes	*	*	*	*	*	*	*	*	*
	No	442.37	454.07	11.70	422.30	432.73	10.42	423.11	418.56	-4.56
Gender	Female	453.24	472.41	19.18	428.20	438.50	10.30	445.92	412.62	-33.31
	Male	422.45	421.73	-0.73	413.23	423.85	10.62	401.93	424.07	22.14

* Data is suppressed based on Alaska Department of Education and Early Development Protocol

Polaris SBA Growth in Average Scale Score by NCLB groups: Reading

		Average Scale Score of Students Tested in District Both Years			Average Scale Score of Students Tested in District Both Years		
		Grade 6 in 2006	Grade 7 in 2007	Difference	Grade 7 in 2006	Grade 8 in 2007	Difference
Ethnicity	All Students	402.27	416.87	14.60	421.43	439.87	18.43
	Black	*	*	*	*	*	*
	AK Native/ American Indian	423.75	443.50	19.75	*	*	*
	Asian	*	*	*	*	*	*
	White	405.71	418.50	12.79	419.90	441.86	21.95
	Hispanic	*	*	*	*	*	*
	2 or More Races	*	*	*	*	*	*
Low Income	Yes	393.20	398.00	4.80	368.33	395.33	27.00
	No	403.23	418.87	15.64	425.14	442.98	17.84
Disabled	Yes	286.00	310.60	24.60	*	*	*
	No	414.64	428.17	13.53	421.43	439.87	18.43
LEP	Yes	*	*	*	*	*	*
	No	402.27	416.87	14.60	419.84	440.53	20.69
Migrant	Yes	*	*	*	*	*	*
	No	404.46	417.50	13.04	422.71	442.09	19.38
Gender	Female	404.41	415.04	10.63	420.35	442.69	22.35
	Male	399.96	418.84	18.88	422.85	436.20	13.35

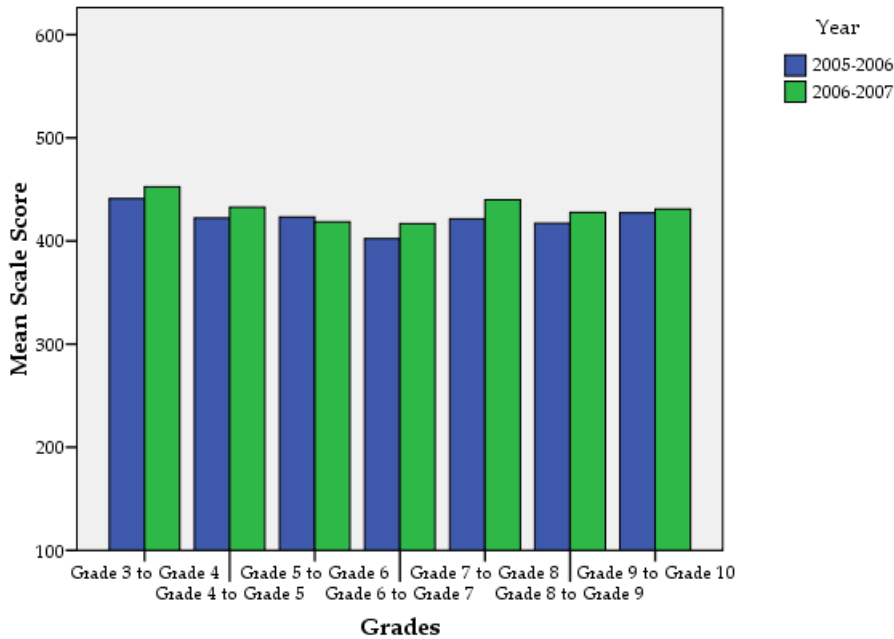
* Data is suppressed based on Alaska Department of Education and Early Development Protocol

Polaris SBA Growth in Average Scale Score by NCLB groups: Reading

		Average Scale Score of Students Tested in District Both Years			Average Scale Score of Students Tested in District Both Years		
		Grade 8 in 2006	Grade 9 in 2007	Difference	Grade 9 in 2006	Grade 10 in 2007	Difference
Ethnicity	All Students	417.23	427.58	10.35	427.32	430.92	3.60
	Black	*	*	*	*	*	*
	AK Native/ American Indian	*	*	*	414.40	409.60	-4.80
	Asian	439.00	462.00	23.00	*	*	*
	White	410.63	420.22	9.59	426.21	433.56	7.35
	Hispanic	*	*	*	*	*	*
	2 or More Races	*	*	*	*	*	*
Low Income	Yes	*	*	*	*	*	*
	No	420.77	428.37	7.60	432.39	436.45	4.06
Disabled	Yes	*	*	*	*	*	*
	No	417.23	427.58	10.35	427.32	430.92	3.60
LEP	Yes	463.67	475.00	11.33	*	*	*
	No	412.25	422.50	10.25	427.32	430.92	3.60
Migrant	Yes	*	*	*	*	*	*
	No	417.23	427.58	10.35	427.32	430.92	3.60
Gender	Female	442.88	453.24	10.35	438.83	444.67	5.83
	Male	386.07	396.43	10.36	416.69	417.17	0.47

* Data is suppressed based on Alaska Department of Education and Early Development Protocol

Growth in Mean Scale Score in Reading by Grade for Polaris between 2005-2006 and 2006-2007



Polaris SBA Growth in Average Scale Score by NCLB groups: Writing

		Average Scale Score of Students Tested in District Both Years			Average Scale Score of Students Tested in District Both Years			Average Scale Score of Students Tested in District Both Years		
		Grade 3 in 2006	Grade 4 in 2007	Difference	Grade 4 in 2006	Grade 5 in 2007	Difference	Grade 5 in 2006	Grade 6 in 2007	Difference
Ethnicity	All Students	411.21	441.07	29.86	403.61	409.24	5.64	416.22	425.70	9.48
	Black	393.67	428.67	35.00	*	*	*	*	*	*
	AK Native/ American Indian	*	*	*	408.33	401.67	-6.67	440.00	413.25	-26.75
	Asian	*	*	*	*	*	*	434.50	408.00	-26.50
	White	424.95	451.50	26.55	411.75	420.83	9.08	405.06	428.00	22.94
	Hispanic	*	*	*	*	*	*	*	*	*
	2 or More Races	*	*	*	*	*	*	*	*	*
Low Income	Yes	*	*	*	*	*	*	*	*	*
	No	410.77	442.31	31.54	404.97	410.84	5.88	416.48	428.12	11.64
Disabled	Yes	*	*	*	*	*	*	*	*	*
	No	411.81	443.04	31.22	405.32	413.61	8.29	423.31	432.15	8.85
LEP	Yes	*	*	*	351.50	362.25	10.75	463.67	430.33	-33.33
	No	414.26	441.89	27.63	410.79	415.72	4.93	410.29	425.13	14.83
Migrant	Yes	*	*	*	*	*	*	*	*	*
	No	413.74	443.81	30.07	403.61	409.24	5.64	416.22	425.70	9.48
Gender	Female	430.53	473.59	43.06	416.75	415.60	-1.15	444.85	448.54	3.69
	Male	381.36	390.82	9.45	383.38	399.46	16.08	389.64	404.50	14.86

* Data is suppressed based on Alaska Department of Education and Early Development Protocol

Polaris SBA Growth in Average Scale Score by NCLB groups: Writing

		Average Scale Score of Students Tested in District Both Years			Average Scale Score of Students Tested in District Both Years		
		Grade 6 in 2006	Grade 7 in 2007	Difference	Grade 7 in 2006	Grade 8 in 2007	Difference
Ethnicity	All Students	399.71	397.69	-2.02	408.15	413.52	5.37
	Black	*	*	*	*	*	*
	AK Native/ American Indian	403.00	412.25	9.25	*	*	*
	Asian	*	*	*	*	*	*
	White	401.90	399.95	-1.95	409.57	414.07	4.50
	Hispanic	*	*	*	*	*	*
	2 or More Races	*	*	*	*	*	*
Low Income	Yes	399.40	398.20	-1.20	362.33	381.67	19.33
	No	399.74	397.64	-2.11	411.35	415.74	4.40
Disabled	Yes	290.40	266.20	-24.20	*	*	*
	No	411.34	411.68	0.34	408.15	413.52	5.37
LEP	Yes	*	*	*	*	*	*
	No	399.71	397.69	-2.02	407.73	412.18	4.44
Migrant	Yes	*	*	*	*	*	*
	No	400.10	397.08	-3.02	411.00	416.00	5.00
Gender	Female	414.41	409.41	-5.00	416.08	426.23	10.15
	Male	383.84	385.04	1.20	397.85	397.00	-0.85

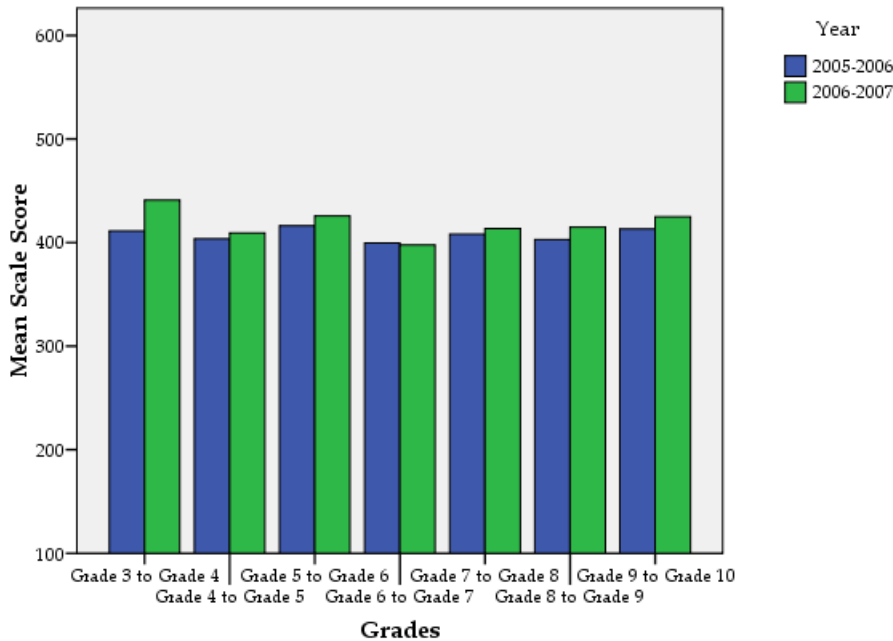
* Data is suppressed based on Alaska Department of Education and Early Development Protocol

Polaris SBA Growth in Average Scale Score by NCLB groups: Writing

		Average Scale Score of Students Tested in District Both Years			Average Scale Score of Students Tested in District Both Years		
		Grade 8 in 2006	Grade 9 in 2007	Difference	Grade 9 in 2006	Grade 10 in 2007	Difference
Ethnicity	All Students	402.94	414.97	12.03	413.08	424.96	11.88
	Black	*	*	*	*	*	*
	AK Native/ American Indian	*	*	*	399.80	441.60	41.80
	Asian	456.00	470.67	14.67	*	*	*
	White	391.89	403.15	11.26	413.84	419.00	5.16
	Hispanic	*	*	*	*	*	*
	2 or More Races	*	*	*	*	*	*
Low Income	Yes	*	*	*	*	*	*
	No	407.23	417.60	10.37	418.91	426.00	7.09
Disabled	Yes	*	*	*	*	*	*
	No	402.94	414.97	12.03	413.08	424.96	11.88
LEP	Yes	487.33	502.00	14.67	*	*	*
	No	393.89	405.64	11.75	413.08	424.96	11.88
Migrant	Yes	*	*	*	*	*	*
	No	402.94	414.97	12.03	413.08	424.96	11.88
Gender	Female	426.18	439.47	13.29	425.92	456.92	31.00
	Male	374.71	385.21	10.50	401.23	393.00	-8.23

* Data is suppressed based on Alaska Department of Education and Early Development Protocol

Growth in Mean Scale Score in Writing by Grade for Polaris between 2005-2006 and 2006-2007



Polaris SBA Growth in Average Scale Score by NCLB groups: Math

		Average Scale Score of Students Tested in District Both Years			Average Scale Score of Students Tested in District Both Years			Average Scale Score of Students Tested in District Both Years		
		Grade 3 in 2006	Grade 4 in 2007	Difference	Grade 4 in 2006	Grade 5 in 2007	Difference	Grade 5 in 2006	Grade 6 in 2007	Difference
Ethnicity	All Students	397.39	377.96	-19.43	375.55	376.06	0.52	375.44	374.63	-0.81
	Black	361.67	333.00	-28.67	*	*	*	*	*	*
	AK Native/ American Indian	*	*	*	375.00	371.33	-3.67	370.75	368.00	-2.75
	Asian	*	*	*	*	*	*	382.00	386.50	4.50
	White	408.68	387.95	-20.73	393.67	388.63	-5.04	369.88	372.44	2.56
	Hispanic	*	*	*	*	*	*	*	*	*
	2 or More Races	*	*	*	*	*	*	*	*	*
Low Income	Yes	*	*	*	*	*	*	*	*	*
	No	398.88	375.96	-22.92	376.50	375.75	-0.75	379.84	375.84	-4.00
Disabled	Yes	*	*	*	*	*	*	*	*	*
	No	397.74	378.56	-19.19	378.68	377.65	-1.03	380.23	378.58	-1.65
LEP	Yes	*	*	*	348.00	334.75	-13.25	398.67	410.00	11.33
	No	395.67	377.33	-18.33	379.34	381.76	2.41	372.54	370.21	-2.33
Migrant	Yes	*	*	*	*	*	*	*	*	*
	No	399.56	378.33	-21.22	375.55	376.06	0.52	375.44	374.63	-0.81
Gender	Female	404.47	389.35	-15.12	361.50	375.70	14.20	377.46	377.38	-0.08
	Male	386.45	360.36	-26.09	397.15	376.62	-20.54	373.57	372.07	-1.50

* Data is suppressed based on Alaska Department of Education and Early Development Protocol

Polaris SBA Growth in Average Scale Score by NCLB groups: Math

		Average Scale Score of Students Tested in District Both Years			Average Scale Score of Students Tested in District Both Years		
		Grade 6 in 2006	Grade 7 in 2007	Difference	Grade 7 in 2006	Grade 8 in 2007	Difference
Ethnicity	All Students	363.54	367.90	4.37	380.59	384.17	3.59
	Black	*	*	*	*	*	*
	AK Native/ American Indian	350.25	351.25	1.00	*	*	*
	Asian	*	*	*	*	*	*
	White	368.90	375.50	6.60	384.10	387.36	3.26
	Hispanic	*	*	*	*	*	*
	2 or More Races	*	*	*	*	*	*
Low Income	Yes	358.00	376.60	18.60	349.00	352.00	3.00
	No	364.13	366.98	2.85	382.79	386.42	3.63
Disabled	Yes	253.80	257.20	3.40	*	*	*
	No	375.21	379.68	4.47	380.59	384.17	3.59
LEP	Yes	*	*	*	*	*	*
	No	363.54	367.90	4.37	380.36	384.27	3.91
Migrant	Yes	*	*	*	*	*	*
	No	364.42	366.34	1.92	383.24	386.40	3.16
Gender	Female	358.78	366.22	7.44	373.62	375.27	1.65
	Male	368.68	369.72	1.04	389.65	395.75	6.10

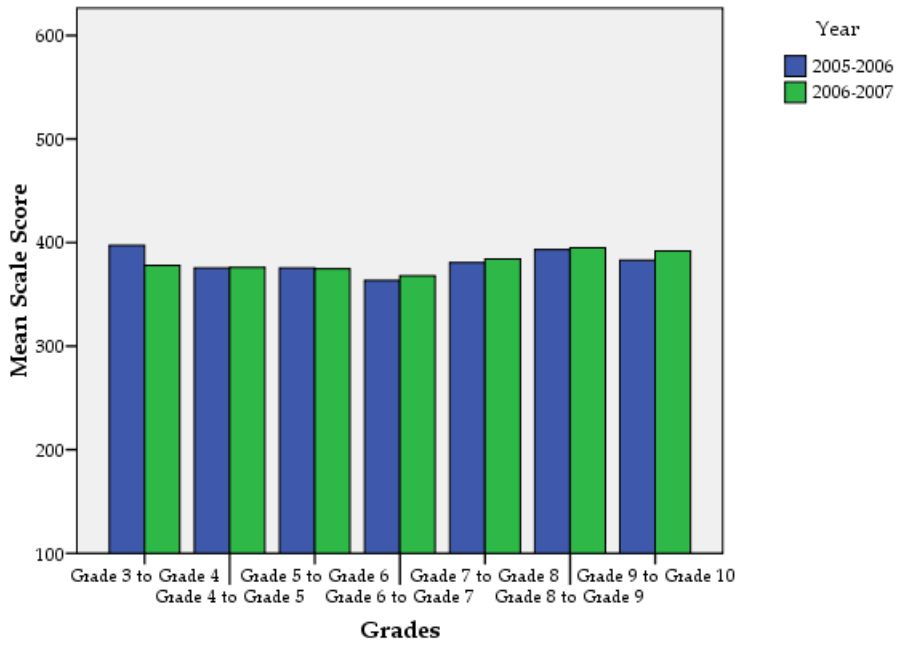
* Data is suppressed based on Alaska Department of Education and Early Development Protocol

Polaris SBA Growth in Average Scale Score by NCLB groups: Math

		Average Scale Score of Students Tested in District Both Years			Average Scale Score of Students Tested in District Both Years		
		Grade 8 in 2006	Grade 9 in 2007	Difference	Grade 9 in 2006	Grade 10 in 2007	Difference
Ethnicity	All Students	393.29	394.94	1.65	382.92	391.88	8.96
	Black	*	*	*	*	*	*
	AK Native/ American Indian	*	*	*	360.00	373.60	13.60
	Asian	400.33	419.67	19.33	*	*	*
	White	388.81	388.63	-0.19	387.11	389.05	1.95
	Hispanic	*	*	*	*	*	*
	2 or More Races	*	*	*	*	*	*
Low Income	Yes	*	*	*	*	*	*
	No	395.07	395.47	0.40	388.83	399.26	10.43
Disabled	Yes	*	*	*	*	*	*
	No	393.29	394.94	1.65	382.92	391.88	8.96
LEP	Yes	434.33	444.67	10.33	*	*	*
	No	388.89	389.61	0.71	382.92	391.88	8.96
Migrant	Yes	*	*	*	*	*	*
	No	393.29	394.94	1.65	382.92	391.88	8.96
Gender	Female	392.47	400.47	8.00	381.75	401.75	20.00
	Male	394.29	388.21	-6.07	384.00	382.77	-1.23

* Data is suppressed based on Alaska Department of Education and Early Development Protocol

Growth in Mean Scale Score in Math by Grade for Polaris between 2005-2006 and 2006-2007



2007 SBA Results Compared for Polaris, District and State

Reading		Polaris	District Gr. 3-10	State Gr. 3-10	Polaris	District Gr. 3-10	State Gr. 3-10	Polaris	District Gr. 3-10	State Gr. 3-10	Polaris	District Gr. 3-10	State Gr. 3-10	Polaris	District Gr. 3-10	State Gr. 3-10
		% Advanced Proficient			% Proficient			% Below Proficient			% Far Below Proficient			% Tested		
Category	All Students	69.20%	41.21%	37.23%	26.99%	44.04%	45.11%	2.42%	11.13%	13.43%	1.38%	3.62%	4.23%	99.31%	97.32%	97.05%
	Black	.	24.64%	24.13%	.	52.18%	53.83%	.	17.73%	17.28%	.	5.45%	4.76%	100.00%	96.94%	96.90%
	Alaska Native/American Indian	68.97%	24.38%	16.75%	27.59%	49.53%	48.28%	.	18.81%	25.84%	.	7.28%	9.14%	100.00%	96.56%	96.49%
	Asian/Pacific Islander	50.00%	29.16%	31.92%	44.44%	50.02%	49.91%	.	15.88%	14.50%	.	4.95%	3.67%	100.00%	96.50%	96.75%
	White	71.95%	52.80%	48.71%	25.34%	38.95%	41.70%	.	6.31%	7.49%	.	1.94%	2.09%	99.10%	97.87%	97.42%
	Hispanic	42.86%	27.32%	28.11%	57.14%	51.44%	52.68%	.	16.34%	14.90%	.	4.90%	4.30%	100.00%	96.15%	95.87%
	2 or More Races	.	32.94%	34.90%	.	48.06%	48.43%	.	14.57%	12.59%	.	4.43%	4.09%	100.00%	97.32%	97.38%
	Low Income	36.36%	23.49%	22.25%	59.09%	51.37%	49.57%	.	18.34%	20.97%	.	6.80%	7.22%	100.00%	96.14%	96.42%
	Not Low Income	71.91%	52.12%	47.27%	24.34%	39.52%	42.12%	2.62%	6.69%	8.39%	1.12%	1.66%	2.23%	99.26%	98.06%	97.47%
	Disabled	.	9.55%	8.37%	.	39.47%	38.26%	.	32.82%	35.07%	.	18.16%	18.29%	100.00%	91.89%	91.47%
	Not Disabled	71.84%	45.89%	41.38%	25.27%	44.71%	46.09%	1.81%	7.93%	10.32%	1.08%	1.47%	2.21%	99.28%	98.17%	97.91%
	LEP	31.25%	17.76%	10.97%	62.50%	53.39%	48.06%	.	21.99%	30.58%	.	6.85%	10.38%	100.00%	95.54%	96.20%
	Not LEP	71.43%	45.72%	42.22%	24.91%	42.24%	44.54%	2.20%	9.05%	10.17%	1.47%	3.00%	3.06%	99.27%	97.66%	97.21%
	Migrant	.	26.04%	19.43%	.	50.10%	47.39%	.	17.82%	25.45%	.	6.04%	7.73%	100.00%	96.65%	97.11%
	Not Migrant	70.07%	41.77%	38.43%	26.06%	43.81%	44.95%	2.46%	10.89%	12.62%	1.41%	3.53%	4.00%	99.30%	97.34%	97.05%
	Female	69.94%	45.44%	41.09%	27.61%	43.40%	44.96%	.	8.82%	11.04%	.	2.34%	2.91%	100.00%	97.49%	97.24%
	Male	68.25%	37.19%	33.55%	26.19%	44.64%	45.24%	3.17%	13.34%	15.71%	2.38%	4.84%	5.49%	98.44%	97.16%	96.87%

. Suppressed based on Department of Education and Early Development Reporting Protocol

2007 SBA Results Compared for Polaris, District and State

Writing	Polaris	District Gr. 3-10	State Gr. 3-10	Polaris	District Gr. 3-10	State Gr. 3-10	Polaris	District Gr. 3-10	State Gr. 3-10	Polaris	District Gr. 3-10	State Gr. 3-10	Polaris	District Gr. 3-10	State Gr. 3-10
	% Advanced Proficient			% Proficient			% Below Proficient			% Far Below Proficient			% Tested		
All Students	35.29%	22.97%	19.72%	58.48%	55.53%	54.88%	.	17.58%	20.47%	.	3.92%	4.93%	99.31%	97.18%	97.02%
Black	.	12.79%	12.85%	.	54.10%	55.24%	.	26.50%	25.60%	.	6.60%	6.31%	100.00%	96.85%	96.87%
Alaska Native/American Indian	44.83%	12.03%	7.67%	48.28%	51.14%	46.33%	.	28.51%	35.46%	.	8.32%	10.55%	100.00%	96.12%	96.47%
Asian/Pacific Islander	55.56%	18.26%	19.40%	38.89%	56.22%	58.12%	.	20.69%	18.50%	.	4.83%	3.98%	100.00%	96.26%	96.58%
White	33.48%	28.95%	25.78%	61.09%	57.31%	58.19%	.	11.59%	13.48%	.	2.15%	2.54%	99.10%	97.82%	97.41%
Hispanic	.	15.58%	15.18%	.	54.51%	57.44%	.	25.06%	22.90%	.	4.85%	4.47%	100.00%	95.99%	95.78%
2 or More Races	.	22.35%	21.59%	.	51.41%	53.48%	.	22.10%	20.81%	.	4.14%	4.12%	100.00%	97.12%	97.32%
Low Income	22.73%	13.33%	11.92%	68.18%	51.55%	49.90%	.	28.00%	30.14%	.	7.12%	8.03%	100.00%	96.08%	96.46%
Not Low Income	36.33%	28.91%	24.96%	57.68%	57.99%	58.23%	.	11.16%	13.98%	.	1.94%	2.84%	99.26%	97.86%	97.40%
Disabled	.	5.28%	4.59%	.	34.12%	31.66%	.	43.68%	45.51%	.	16.92%	18.25%	100.00%	92.11%	91.65%
Not Disabled	36.82%	25.60%	21.91%	58.48%	58.71%	58.24%	.	13.70%	16.85%	.	1.99%	3.01%	99.28%	97.98%	97.85%
LEP	50.00%	12.27%	7.31%	43.75%	51.88%	43.15%	.	28.61%	38.23%	.	7.24%	11.31%	100.00%	95.52%	96.25%
Not LEP	34.43%	25.03%	22.09%	59.34%	56.24%	57.12%	.	15.45%	17.08%	.	3.28%	3.71%	99.27%	97.50%	97.17%
Migrant	.	12.59%	8.36%	.	52.23%	47.72%	.	27.06%	34.37%	.	8.13%	9.55%	100.00%	96.56%	97.23%
Not Migrant	35.92%	23.35%	20.49%	57.75%	55.65%	55.37%	.	17.23%	19.53%	.	3.76%	4.61%	99.30%	97.20%	97.01%
Female	46.63%	28.86%	24.77%	49.69%	55.76%	56.25%	.	13.31%	16.15%	.	2.07%	2.84%	100.00%	97.22%	97.23%
Male	20.63%	17.38%	14.92%	69.84%	55.32%	53.58%	.	21.63%	24.58%	.	5.68%	6.92%	98.44%	97.14%	96.82%

. Suppressed based on Department of Education and Early Development Reporting Protocol

2007 SBA Results Compared for Polaris, District and State

Math	Polaris	District Gr. 3-10	State Gr. 3-10	Polaris	District Gr. 3-10	State Gr. 3-10	Polaris	District Gr. 3-10	State Gr. 3-10	Polaris	District Gr. 3-10	State Gr. 3-10	Polaris	District Gr. 3-10	State Gr. 3-10
	% Advanced Proficient			% Proficient			% Below Proficient			% Far Below Proficient			% Tested		
All Students	46.37%	36.70%	31.91%	42.21%	39.14%	39.89%	9.34%	13.79%	16.00%	2.08%	10.37%	12.21%	99.31%	97.29%	97.04%
Black	.	18.52%	17.86%	.	39.92%	41.48%	.	21.26%	21.68%	.	20.30%	18.99%	100.00%	96.89%	96.90%
Alaska Native/American Indian	37.93%	23.45%	16.19%	51.72%	39.25%	37.79%	.	19.92%	23.29%	.	17.39%	22.72%	100.00%	95.92%	96.32%
Asian/Pacific Islander	55.56%	32.91%	34.36%	33.33%	40.99%	41.59%	.	14.59%	14.28%	.	11.52%	9.76%	100.00%	97.54%	97.81%
White	47.96%	45.36%	40.19%	42.99%	38.31%	40.23%	7.24%	10.39%	12.42%	1.81%	5.95%	7.17%	99.10%	97.65%	97.27%
Hispanic	.	25.13%	24.78%	.	40.78%	42.42%	.	17.66%	18.23%	.	16.43%	14.57%	100.00%	97.24%	96.98%
2 or More Races	.	30.82%	30.94%	.	40.04%	40.99%	.	15.78%	15.74%	.	13.36%	12.32%	100.00%	97.17%	97.35%
Low Income	36.36%	22.21%	20.28%	45.45%	40.73%	39.79%	.	19.19%	20.91%	.	17.87%	19.02%	100.00%	96.53%	96.59%
Not Low Income	47.19%	45.67%	39.73%	41.95%	38.16%	39.95%	8.61%	10.45%	12.70%	2.25%	5.72%	7.63%	99.26%	97.76%	97.34%
Disabled	.	10.49%	8.85%	.	27.27%	27.01%	.	24.10%	24.91%	.	38.14%	39.22%	100.00%	92.01%	91.68%
Not Disabled	47.65%	40.58%	35.24%	42.96%	40.90%	41.74%	7.58%	12.27%	14.71%	1.81%	6.26%	8.31%	99.28%	98.12%	97.86%
LEP	.	22.07%	14.14%	.	41.07%	36.59%	.	18.64%	23.91%	.	18.23%	25.36%	100.00%	97.16%	96.95%
Not LEP	45.42%	39.56%	35.32%	43.96%	38.76%	40.52%	8.79%	12.84%	14.48%	1.83%	8.83%	9.68%	99.27%	97.32%	97.05%
Migrant	.	25.72%	19.40%	.	39.37%	37.18%	.	18.10%	22.50%	.	16.82%	20.92%	100.00%	96.75%	96.99%
Not Migrant	46.83%	37.10%	32.75%	41.90%	39.13%	40.07%	9.15%	13.63%	15.56%	2.11%	10.14%	11.62%	99.30%	97.31%	97.04%
Female	46.63%	36.86%	31.94%	41.72%	40.21%	40.90%	9.20%	14.03%	16.23%	2.45%	8.90%	10.94%	100.00%	97.30%	97.13%
Male	46.03%	36.54%	31.88%	42.86%	38.12%	38.92%	.	13.56%	15.77%	.	11.77%	13.42%	98.44%	97.28%	96.95%

. Suppressed based on Department of Education and Early Development Reporting Protocol

Anchorage School District: Profile of Performance 2006-2007

Polaris TerraNova 5th grade

Percent in each quartile

Reading	Above Average		Average				Below Average	
	4th Quartile (76-99 percentile)		3rd Quartile (51-75 percentile)		2nd Quartile (26-50 percentile)		1st Quartile (1-25 percentile)	
	School	District	School	District	School	District	School	District
2006-2007	60.0%	33.1%	28.6%	26.1%	.	23.6%	.	17.2%
2005-2006	50.0%	30.4%	33.3%	26.8%	16.7%	24.5%	0.0%	18.3%
2004-2005	36.8%	29.2%	31.6%	27.6%	26.3%	24.5%	5.3%	18.7%
2003-2004	43.2%	30.6%	27.0%	26.9%	24.3%	24.2%	5.4%	18.3%
2002-2003	36.1%	29.1%	30.6%	26.6%	25.0%	23.8%	8.3%	20.5%
2001-2002	37.1%	30.3%	28.6%	26.0%	17.1%	24.6%	17.1%	19.0%

Language	Above Average		Average				Below Average	
	4th Quartile (76-99 percentile)		3rd Quartile (51-75 percentile)		2nd Quartile (26-50 percentile)		1st Quartile (1-25 percentile)	
	School	District	School	District	School	District	School	District
2006-2007	65.7%	34.7%	25.7%	26.9%	.	21.4%	.	17.0%
2005-2006	50.0%	34.0%	33.3%	26.5%	16.7%	22.0%	0.0%	17.5%
2004-2005	47.4%	32.1%	31.6%	28.3%	15.8%	21.2%	5.3%	18.4%
2003-2004	54.1%	34.1%	16.2%	26.5%	16.2%	21.7%	13.5%	17.7%
2002-2003	50.0%	32.8%	25.0%	26.5%	19.4%	20.9%	5.6%	19.8%
2001-2002	45.7%	32.3%	28.6%	26.4%	17.1%	22.9%	8.6%	18.4%

Math	Above Average		Average				Below Average	
	4th Quartile (76-99 percentile)		3rd Quartile (51-75 percentile)		2nd Quartile (26-50 percentile)		1st Quartile (1-25 percentile)	
	School	District	School	District	School	District	School	District
2006-2007	30.6%	29.7%	47.2%	31.6%	.	21.2%	.	17.4%
2005-2006	24.0%	28.4%	44.0%	31.9%	28.0%	22.3%	4.0%	17.5%
2004-2005	18.4%	26.9%	55.3%	31.1%	15.8%	22.9%	10.5%	19.1%
2003-2004	32.4%	28.3%	24.3%	29.3%	27.0%	22.6%	16.2%	19.8%
2002-2003	16.7%	24.7%	55.6%	30.6%	22.2%	22.6%	5.6%	22.1%
2001-2002	17.1%	24.1%	40.0%	30.1%	28.6%	24.8%	14.3%	20.9%

.The total number of students in this category is less than 5. Rates were not calculated because of instability caused by small numbers.

Anchorage School District: Profile of Performance 2006-2007

Polaris TerraNova 7th grade

Percent in each quartile

Reading	Above Average		Average				Below Average	
	4th Quartile (76-99 percentile)		3rd Quartile (51-75 percentile)		2nd Quartile (26-50 percentile)		1st Quartile (1-25 percentile)	
	School	District	School	District	School	District	School	District
2006-2007	55.8%	35.6%	32.7%	28.0%	.	21.5%	.	14.9%
2005-2006	68.6%	34.6%	23.5%	28.4%	7.8%	21.8%	0.0%	15.3%
2004-2005	41.9%	33.9%	34.9%	27.1%	23.3%	21.7%	0.0%	17.4%
2003-2004	60.0%	35.1%	22.9%	28.2%	5.7%	21.4%	11.4%	15.3%
2002-2003	61.9%	35.3%	23.8%	28.9%	9.5%	20.1%	4.8%	15.7%
2001-2002	56.8%	34.4%	35.1%	28.6%	8.1%	20.9%	0.0%	16.2%

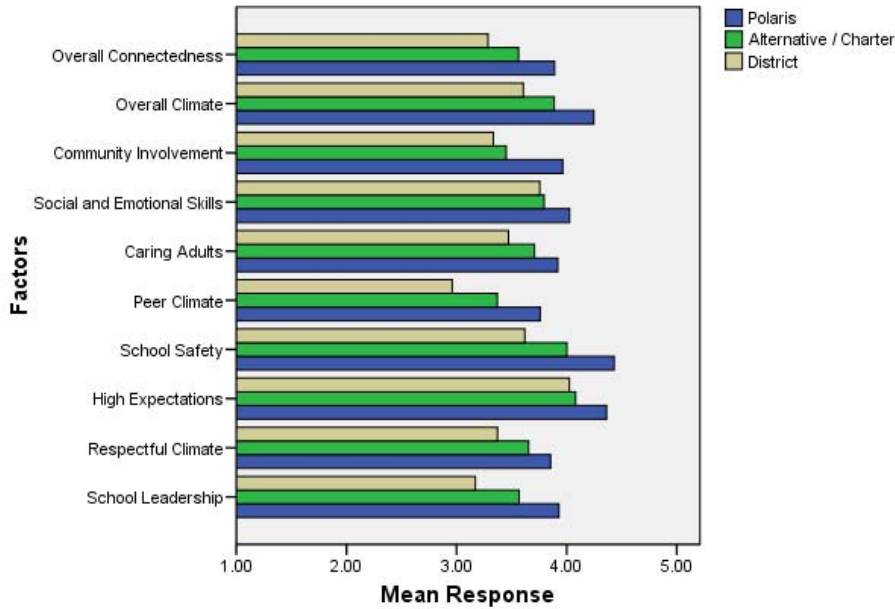
Language	Above Average		Average				Below Average	
	4th Quartile (76-99 percentile)		3rd Quartile (51-75 percentile)		2nd Quartile (26-50 percentile)		1st Quartile (1-25 percentile)	
	School	District	School	District	School	District	School	District
2006-2007	67.3%	35.4%	25.0%	28.7%	.	21.5%	.	14.3%
2005-2006	68.6%	34.9%	19.6%	28.4%	9.8%	21.4%	2.0%	15.3%
2004-2005	55.8%	34.4%	34.9%	28.2%	9.3%	20.5%	0.0%	16.9%
2003-2004	51.4%	35.3%	22.9%	28.5%	22.9%	21.7%	2.9%	14.5%
2002-2003	57.1%	34.2%	23.8%	29.8%	11.9%	22.0%	7.1%	14.0%
2001-2002	62.2%	34.0%	24.3%	29.7%	8.1%	20.6%	5.4%	15.7%

Math	Above Average		Average				Below Average	
	4th Quartile (76-99 percentile)		3rd Quartile (51-75 percentile)		2nd Quartile (26-50 percentile)		1st Quartile (1-25 percentile)	
	School	District	School	District	School	District	School	District
2006-2007	43.1%	31.5%	35.3%	28.3%	15.7%	23.0%	5.9%	17.2%
2005-2006	49.0%	31.4%	19.6%	27.8%	25.5%	23.4%	5.9%	17.4%
2004-2005	48.8%	29.7%	32.6%	26.4%	7.0%	22.9%	11.6%	20.9%
2003-2004	60.0%	30.2%	14.3%	27.6%	17.1%	23.9%	8.6%	18.4%
2002-2003	37.2%	31.2%	32.6%	26.9%	23.3%	23.1%	7.0%	18.8%
2001-2002	45.9%	29.7%	29.7%	27.5%	18.9%	22.9%	5.4%	19.9%

.The total number of students in this category is less than 5. Rates were not calculated because of instability caused by small numbers.

Student Survey Results

2007 Climate and Connectedness Student Survey - Polaris



Each question in the survey related to a factor or concept, and a score was calculated based on the average response for the questions related to each factor. The factors measured in the survey were: (Individual questions provided answer categories of strongly agree, agree, agree some/disagree some, disagree, and strongly disagree; 5 being strongly agree and 1 being strongly disagree)

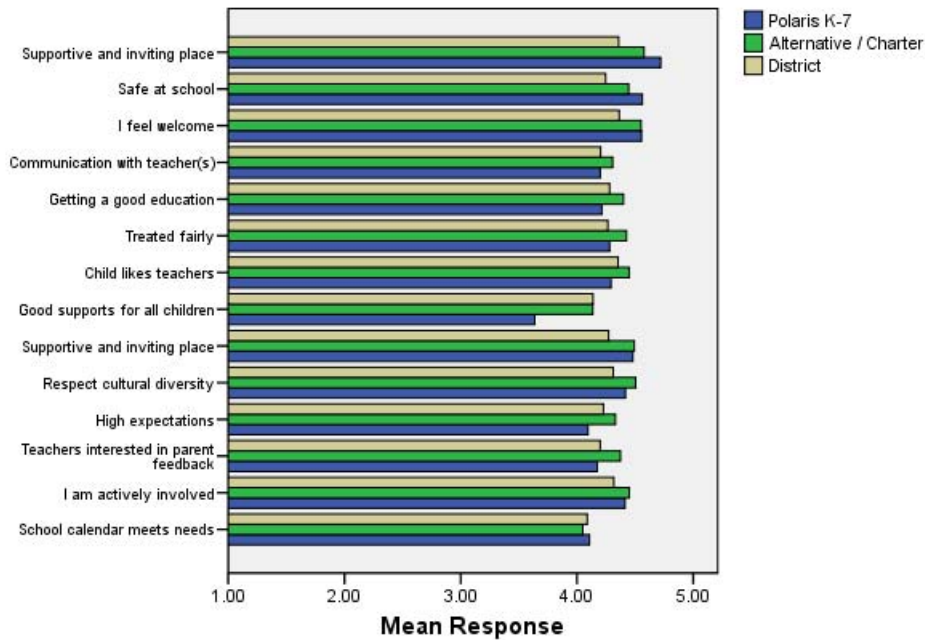
- **School Leadership and Student Involvement:** This factor reflects students’ feelings about the decision making of school leaders as well as student participation in the school governance.
- **Respectful Climate:** This factor reflects students’ feelings about fairness of rules and respect for students’ contributions.
- **High Expectations:** This factor reflects students’ feelings about their own expectations as well as those of adults in their school and community.
- **School Safety:** This factor reflects students’ feelings about bullies and gangs at school as well as general crime and violence in the community.
- **Peer Climate:** This factor reflects students’ feelings about how respectful students are to one another and how helpful students are to other students.
- **Caring Adults:** This factor reflects students’ feelings about how close they feel to other adults in the school.
- **Social and Emotional Learning:** This factor reflects students’ ability to think about the consequences of their actions and to empathize with others.
- **Community Involvement:** This factor reflects students’ feelings about how supportive and welcoming the school is with parents and the community.
- **Overall Climate:** The Overall Climate score was computed as the average of three scales: School Leadership, High Expectations, and School Safety.
- **Overall Connectedness:** Overall Connectedness score was computed as an average of three scales: Respectful Climate, Peer Climate, and Caring Adults.

Staff Survey Results

* The response rate is not high enough to provide statistically reliable results.

Parent/Guardian Survey Results

2007 Climate and Connectedness Parent/Guardian Survey - Polaris



Questions on the Parent/Guardian Survey included:

- My child’s school is a supportive and inviting place
- My child is safe at school
- I feel welcome at this school
- I am satisfied with communication with my child’s teacher(s)
- My child is getting a good education at this school
- My child is treated fairly at school
- My child likes his/her teachers
- At this school, there are good supports for all children, including children with learning disabilities
- This school is a supportive and inviting place for parents/guardians
- Adults at this school respect cultural diversity
- Adults at this school have high expectations of my child
- Teachers at my child’s school are interested in what I have to say
- I feel like I am actively involved in my child’s education
- The District’s school calendar meets the needs of my child and our family