

Abbott Loop Elementary School Overview

Statement of Program

Abbott Loop Elementary School houses K-6 students with a full-day kindergarten program, three special education resource classes, and two intensive-needs classes. Abbott Loop emphasizes academic achievement and mastery of the basics for all students.

The academic staff includes classroom teachers, a music teacher, physical education teacher, librarian and bilingual tutors. An art teacher, a health teacher, band teacher, orchestra teacher, speech specialists, school nurse, counselor and a school psychologist provide instruction and services.

From the School Report Card

School Goals	
Goal	Level of Achievement
The percentage of students in grades 3-6 rated proficient on the state writing assessment will increase from 75.45 to 80 percent.	Not attained
Continue to promote a healthy and safe school community.	Attained
The proficiency of students with disabilities will increase to meet AYP targets.	Partially Attained

From the School Report Card

Budget*	
2006-07 Actual Expenditures	\$2,353,872
2007-08 Revised Budgeted Amount	\$2,919,612
2008-09 Proposed Budget	\$3,052,702

*Dollars budgeted or expended are general fund only
From IFAS

Abbott Loop Elementary School Characteristics			
	School	District	Source of Information
Membership	484	48,858	Fall OASIS
Capacity	106.18%	N/A	2008-18 ASD Capital Improvement Plan
Attendance Rate	93.49%	92.83%	NCLB Summer Data Collection
Retention Rate K-8	1.07%	0.60%	SMS and NCLB Summer Data Collection
Transiency Rate	22.69%	26.07%	NCLB Summer Data Collection
Economically Disadvantaged	237	17,717	Fall OASIS
Average Weekly Volunteer Hours	50	4,660	Department of Education Report Card Report
Students Taking the Alternate Assessment	9	228	SMS
Change in Enrollment	0.21%	-0.76%	Fall Oasis

Teacher Qualification				
Number of Teachers	Percent Fully Licensed	Percent With Advanced Degrees	Number Nationally Board Certified	Percent of Classes Taught by "Highly Qualified Teachers"
34	100.00%	35.29%	0	96.55%

Abbott Loop Elementary School Business Partnerships
Subway of Alaska; Fred Meyer, southeast Anchorage

From the School Report Card

Ethnicity Report							
African-American/Black	Alaska Native/American Indian	Asian	Native Hawaiian/Other Pacific Islander	White	Hispanic	Multi-Ethnic	Total
37	65	70	20	133	62	97	484

From Fall Oasis

Full Academic Year		
Students Enrolled	Students Enrolled for FAY	Percent FAY
469	431	91.90%

From participation file (Grades 3-10)

**Abbott Loop Elementary School
2007-08 Adequate Yearly Progress
Status Report**

Does Not Meet AYP
Level 2

AMO For Language Arts: 77.18%
AMO For Mathematics: 66.09%

Group	Participation Rate				"FAY" (D) Tested & Enrolled "FAY"	Language Arts Performance				Mathematics Performance			
	(A) Number Enrolled	(B) Number Tested	Participation Rate (%)	(C) Participation Rate Met		(E) Proficient on LA	(F) Percent Proficient on LA	(G) LA Target	(H) Met AMO for LA	(I) Proficient on Mathematics	(J) Percent Proficient in Mathematics	(K) Mathematics Target	(L) Met AMO for Mathematics
All Students	280	280	100%	Yes	263	182	69.2%	71.2%	No	160	60.8%	59.3%	Yes
AF AM	26	26	100%	Yes	26	19	73.1%	58%	Yes	15	57.7%	44.5%	Yes
AKNA/AI	31	31	100%	Yes	27	10	37%	58.4%	No	10	37%	44.9%	No
Asian/NH/OPI	58	58	100%	Yes	57	40	70.2%	64.2%	Yes	40	70.2%	51.5%	Yes
White	73	73	100%	Yes	72	52	72.2%	65.7%	Yes	43	59.7%	53.1%	Yes
Hispanic	42	42	100%	Yes	34	25	73.5%	60.4%	Yes	23	67.6%	47.2%	Yes
ME	50	50	100%	Yes	47	36	76.6%	62.9%	Yes	29	61.7%	50%	Yes
EDS	141	141	100%	Yes	125	76	60.8%	68.4%	No	66	52.8%	56.2%	No
SWD	59	59	100%	Yes	54	17	31.5%	63.9%	Yes-SH	14	25.9%	51.1%	No
LEP	73	73	100%	Yes	68	41	60.3%	65.3%	No	41	60.3%	52.7%	Yes

Attendance Rate: Met

93.5% (Threshold is 85%)

N/A is used to indicate:

(1) Subgroups with 20 or fewer students enrolled on the first day of testing shall not be included in participation rate calculation.

(2) Subgroups with 25 or fewer students enrolled for the "full academic year" shall not have the performance score computed.

* For the groups where the number enrolled is less than or equal to 40, participation is met when no more than two miss the test. Groups can also meet this target using the average of the past two or three years.

** When a group achieves a "Yes" without meeting the listed target, it has done so using either the 99% confidence interval or Safe Harbor.

*** The results cannot be published without releasing personally identifiable information based upon the EED reporting protocol.

This document was prepared by the ASD Assessment and Evaluation Department.

7/10/2008

**Abbott Loop Elementary School
2007-08 Adequate Yearly Progress
Growth Report**

AMO For Language Arts: 77.18%
AMO For Mathematics: 66.09%

Group	"FAY" (D) Tested & Enrolled "FAY"	Language Arts Performance				Mathematics Performance			
		(E) Proficient on LA	(F) Percent Proficient on LA	(G) LA Target	(H) Met AMO for LA	(I) Proficient on Mathematics	(J) Percent Proficient in Mathematics	(K) Mathematics Target	(L) Met AMO for Mathematics
All Students									
AF AM									
AKNA/AI									
Asian									
White									
Hispanic									
ME									
EDS									
SWD									
LEP									

N/A is used to indicate:

- (1) Subgroups with 20 or fewer students enrolled on the first day of testing shall not be included in participation rate calculation.
- (2) Subgroups with 25 or fewer students enrolled for the "full academic year" shall not have the performance score computed.

* For the groups where the number enrolled is less than or equal to 40, participation is met when no more than two miss the test. Groups can also meet this target using the average of the past two or three years.

*** The results cannot be published without releasing personally identifiable information based upon the EED reporting protocol.

This document was prepared by the ASD Assessment and Evaluation Department.

SBA Proficiency Comparison by Grade for Abbott Loop Elementary School																
	Reading Percent Proficient				Writing Percent Proficient				Mathematics Percent Proficient				Science* Percent Proficient			
	04-05	05-06	06-07	07-08	04-05	05-06	06-07	07-08	04-05	05-06	06-07	07-08	04-05	05-06	06-07	07-08
All Students	77.46%	79.10%	80.53%	74.44%	71.31%	78.73%	75.29%	66.05%	63.71%	71.75%	76.23%	63.10%	N/A	N/A	N/A	29.51%
Grade 3	75.44%	81.94%	84.06%	70.51%	64.91%	75.00%	79.71%	70.89%	68.42%	80.56%	81.43%	69.62%	N/A	N/A	N/A	N/A
Grade 4	67.69%	77.97%	76.06%	71.43%	58.46%	84.75%	69.01%	73.02%	53.73%	67.80%	69.44%	65.08%	N/A	N/A	N/A	29.51%
Grade 5	89.86%	75.71%	82.69%	77.14%	84.06%	78.57%	77.36%	61.43%	76.06%	62.86%	81.13%	58.57%	N/A	N/A	N/A	N/A
Grade 6	75.47%	80.60%	80.00%	79.66%	77.36%	77.61%	75.71%	57.63%	54.72%	75.00%	74.29%	57.63%	N/A	N/A	N/A	N/A

* 2007-08 was the first year Science was administered for grades 4, 8 and 10 on the SBA.

SBA Proficient & Not Proficient by NCLB Groups for Abbott Loop Elementary School								
	Reading		Writing		Mathematics		Science**	
	Percent Proficient	Percent Not Proficient	Percent Proficient	Percent Not Proficient	Percent Proficient	Percent Not Proficient	Percent Proficient	Percent Not Proficient
All Students	74.44%	25.56%	66.05%	33.95%	63.10%	36.90%	29.51%	70.49%
AF AM	69.23%	30.77%	73.08%	26.92%	57.69%	42.31%	60% or fewer	40% or more
AKNA/AI	48.39%	51.61%	35.48%	64.52%	38.71%	61.29%	50.00%	50.00%
Asian	81.40%	18.60%	69.77%	30.23%	79.07%	20.93%	80% or fewer	20% or more
NH/OPI	61.54%	38.46%	46.15%	53.85%	53.85%	46.15%	*	*
White	75.71%	24.29%	71.43%	28.57%	61.43%	38.57%	26.67%	73.33%
Hispanic	82.05%	17.95%	71.79%	28.21%	74.36%	25.64%	45.45%	54.55%
ME	83.33%	16.67%	71.43%	28.57%	63.27%	36.73%	33.33%	66.67%
EDS	66.42%	33.58%	58.70%	41.30%	55.07%	44.93%	22.58%	77.42%
Non-EDS	82.71%	17.29%	73.68%	26.32%	71.43%	28.57%	36.67%	63.33%
SWD	33.33%	66.67%	21.43%	78.57%	23.81%	76.19%	60% or fewer	40% or more
Non-SWD	82.02%	17.98%	74.24%	25.76%	70.31%	29.69%	28.57%	71.43%
LEP	52.78%	47.22%	47.22%	52.78%	52.78%	47.22%	80% or fewer	20% or more
Not LEP	77.78%	22.22%	68.94%	31.06%	64.68%	35.32%	37.50%	62.50%
Migrant	45.45%	54.55%	45.45%	54.55%	45.45%	54.55%	*	*
Not Migrant	75.68%	24.32%	66.92%	33.08%	63.85%	36.15%	28.33%	71.67%
Female	79.02%	20.98%	74.13%	25.87%	61.54%	38.46%	32.14%	67.86%
Male	69.29%	30.71%	57.03%	42.97%	64.84%	35.16%	27.27%	72.73%

* Results cannot be published without releasing personally identifiable information based upon the EED reporting protocol

** 2007-08 was the first year Science was administered for grades 4, 8 and 10 on the SBA.

SBA Mean Scale Score Comparison by NCLB Groups for Abbott Loop Elementary School								
	Reading		Writing		Mathematics		Science**	
	06-07	07-08	06-07	07-08	06-07	07-08	06-07	07-08
All Students	363.18	350.91	356.67	344.08	346.72	327.81	N/A	273.90
AF AM	341.36	332.85	331.83	342.62	315.70	313.92	N/A	279.67
AKNA/AI	340.75	319.19	315.93	293.03	319.07	296.19	N/A	254.67
Asian**	368.97	356.60	364.39	361.00	361.71	351.23	N/A	250.80
NH/OPI**	N/A	328.77	N/A	309.00	N/A	302.77	N/A	*
White	379.35	363.53	377.69	351.54	360.02	333.64	N/A	285.13
Hispanic	355.22	360.36	351.50	360.67	349.33	335.92	N/A	295.18
ME	355.14	356.00	355.95	347.73	344.46	326.47	N/A	284.67
EDS	343.17	334.47	332.52	324.49	331.12	312.21	N/A	266.90
Non-EDS	381.71	367.84	378.88	364.41	360.86	343.99	N/A	281.13
SWD	300.43	294.26	284.20	270.12	286.03	266.71	N/A	274.60
Non-SWD	374.48	361.35	369.67	357.64	357.51	339.01	N/A	273.84
LEP	348.82	308.89	346.82	305.00	343.81	300.22	N/A	218.15
Not LEP	366.99	357.38	359.28	350.06	347.51	332.03	N/A	289.00
Migrant	367.33	312.27	325.25	299.45	339.50	288.09	N/A	*
Not Migrant	362.98	352.55	358.18	345.97	347.06	329.49	N/A	273.28
Female	371.96	353.33	373.19	358.98	343.08	326.29	N/A	279.46
Male	355.40	348.19	341.94	327.43	349.91	329.50	N/A	269.18

* Results cannot be published without releasing personally identifiable information based upon the EED reporting protocol

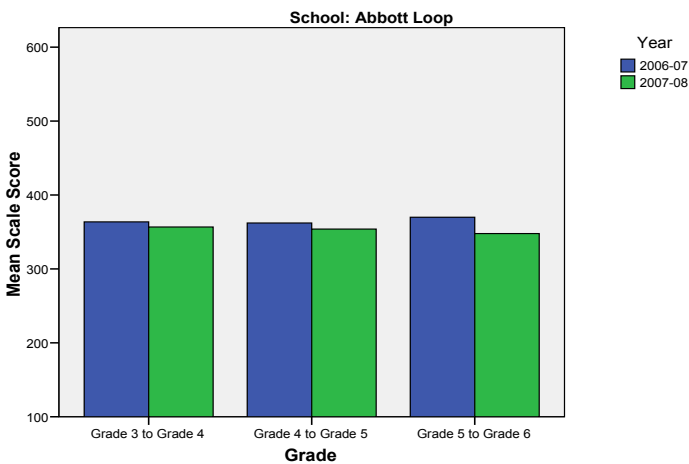
** Prior to 2007-08 the Asian category includes Native Hawaiian/Other Pacific Islander. In 2007-08 Native Hawaiian/Other Pacific Islander is a separate ethnic category.

*** 2007-08 was the first year Science was administered for grades 4, 8 and 10 on the SBA.

Abbott Loop Elementary School SBA Change Average Scale Score by NCLB Groups: Reading									
	Average Scale Score of Students Tested in District Both Years			Average Scale Score of Students Tested in District Both Years			Average Scale Score of Students Tested in District Both Years		
	Grade 3 in 06-07	Grade 4 in 07-08	Difference	Grade 4-in 06-07	Grade 5 in 07-08	Difference	Grade 5-in 06-07	Grade 6 in 07-08	Difference
All Students	363.57	356.70	-6.87	362.07	353.79	-8.28	369.98	347.70	-22.28
AF AM	353.50	354.00	0.50	334.50	336.50	2.00	*	*	*
AKNA/AI	361.20	357.60	-3.60	329.55	324.18	-5.36	*	*	*
Asian	352.44	360.44	8.00	380.67	373.33	-7.33	362.75	344.88	-17.88
NH/OPI	*	*	*	*	*	*	*	*	*
White	359.19	338.06	-21.13	391.57	378.33	-13.24	376.31	355.54	-20.77
Hispanic	373.17	367.08	-6.08	383.13	374.50	-8.63	353.20	335.80	-17.40
ME	392.67	387.56	-5.11	330.70	330.20	-0.50	377.13	357.13	-20.00
EDS	353.52	351.19	-2.32	349.69	341.38	-8.31	341.40	322.28	-19.12
Non-EDS	373.97	362.40	-11.57	373.08	364.83	-8.25	395.50	370.39	-25.11
SWD	317.50	304.33	-13.17	280.90	289.90	9.00	298.91	294.27	-4.64
Non-SWD	368.60	362.42	-6.18	376.07	364.81	-11.26	388.60	361.69	-26.90
LEP	315.42	299.33	-16.08	322.00	315.50	-6.50	324.20	309.60	-14.60
Not LEP	375.37	370.76	-4.61	367.42	358.90	-8.52	374.75	351.67	-23.08
Migrant	*	*	*	357.00	337.67	-19.33	*	*	*
Not Migrant	363.14	357.71	-5.42	362.56	355.35	-7.21	369.98	347.70	-22.28
Female	357.48	353.00	-4.48	353.90	347.55	-6.35	395.62	368.24	-27.38
Male	369.09	360.06	-9.03	368.92	359.03	-9.89	339.00	322.88	-16.13

* Results cannot be published without releasing personally identifiable information based upon the EED reporting protocol

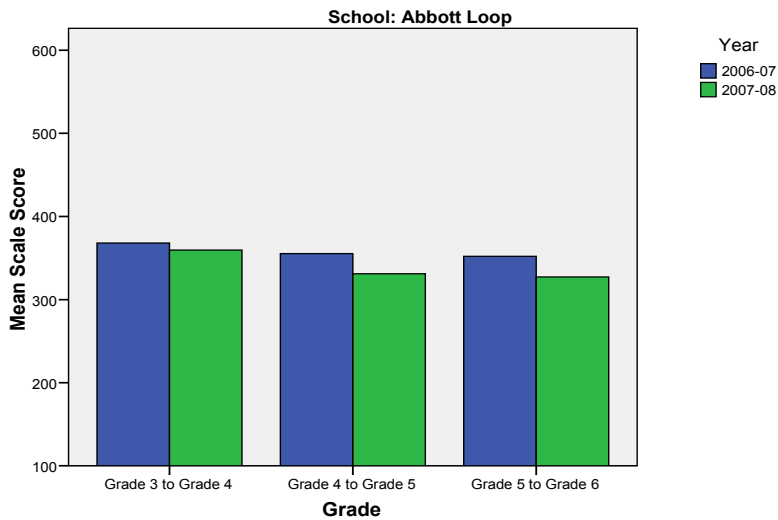
Change in Mean Scale Score in SBA Reading by Grade Between 2006-07 and 2007-08



Abbott Loop Elementary School SBA Change Average Scale Score by NCLB Groups: Writing									
	Average Scale Score of Students Tested in District Both Years			Average Scale Score of Students Tested in District Both Years			Average Scale Score of Students Tested in District Both Years		
	Grade 3 in 06-07	Grade 4 in 07-08	Difference	Grade 4- in 06-07	Grade 5 in 07-08	Difference	Grade 5- in 06-07	Grade 6 in 07-08	Difference
All Students	368.07	359.66	-8.41	355.37	331.07	-24.29	351.94	327.24	-24.70
AF AM	387.67	386.33	-1.33	318.50	329.17	10.67	330.80	321.40	-9.40
AKNA/AI	377.80	357.80	-20.00	311.73	282.00	-29.73	*	*	*
Asian	363.00	353.78	-9.22	391.00	355.11	-35.89	333.13	332.38	-0.75
NH/OPI	*	*	*	*	*	*	*	*	*
White	349.56	333.94	-15.63	391.10	360.62	-30.48	379.54	313.85	-65.69
Hispanic	378.17	392.42	14.25	378.50	342.38	-36.13	360.60	328.20	-32.40
ME	391.33	372.78	-18.56	317.20	302.10	-15.10	355.40	356.27	0.87
EDS	356.58	352.94	-3.65	331.22	313.44	-17.78	322.20	295.04	-27.16
Non-EDS	379.93	366.60	-13.33	376.83	346.75	-30.08	377.59	355.00	-22.59
SWD	302.00	306.83	4.83	274.10	248.80	-25.30	265.18	250.91	-14.27
Non-SWD	375.27	365.42	-9.85	369.38	345.26	-24.12	374.14	346.77	-27.37
LEP	333.58	313.08	-20.50	332.63	296.13	-36.50	302.40	276.20	-26.20
Not LEP	376.51	371.06	-5.45	358.40	335.73	-22.67	357.00	332.45	-24.55
Migrant	*	*	*	316.00	315.67	-0.33	*	*	*
Not Migrant	366.68	359.78	-6.90	359.18	332.56	-26.61	351.94	327.24	-24.70
Female	371.59	361.24	-10.34	364.29	333.65	-30.65	382.13	368.13	-14.00
Male	364.88	358.22	-6.66	347.89	328.92	-18.97	314.21	276.13	-38.08

* Results cannot be published without releasing personally identifiable information based upon the EED reporting protocol

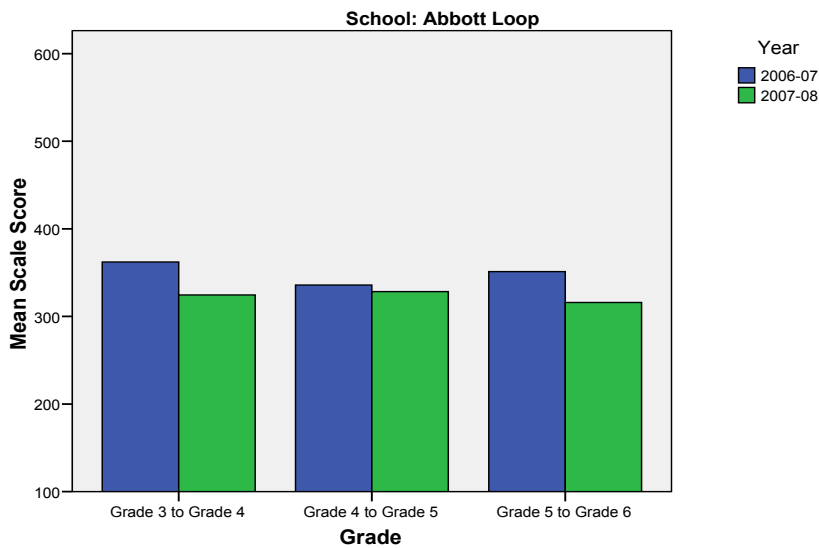
Change in Mean Scale Score in SBA Writing by Grade between 2006-07 and 2007-08



Abbott Loop Elementary School SBA Change Average Scale Score by NCLB Groups: Mathematics									
	Average Scale Score of Students Tested in District Both Years			Average Scale Score of Students Tested in District Both Years			Average Scale Score of Students Tested in District Both Years		
	Grade 3 in 06-07	Grade 4 in 07-08	Difference	Grade 4- in 06-07	Grade 5 in 07-08	Difference	Grade 5- in 06-07	Grade 6 in 07-08	Difference
All Students	362.15	324.44	-37.71	335.86	328.29	-7.57	351.28	316.00	-35.28
AF AM	372.67	323.17	-49.50	312.83	312.00	-0.83	329.60	309.00	-20.60
AKNA/AI	349.00	338.60	-10.40	307.09	294.09	-13.00	*	*	*
Asian	360.50	334.40	-26.10	380.40	353.60	-26.80	335.00	324.25	-10.75
NH/OPI	*	*	*	*	*	*	*	*	*
White	342.06	299.19	-42.88	355.29	349.90	-5.38	357.38	303.00	-54.38
Hispanic	385.00	343.17	-41.83	359.75	351.88	-7.88	360.20	315.00	-45.20
ME	396.22	341.56	-54.67	291.30	298.90	7.60	364.67	328.13	-36.53
EDS	353.42	320.29	-33.13	313.81	306.50	-7.31	342.00	304.40	-37.60
Non-EDS	370.87	328.58	-42.29	354.92	347.14	-7.78	359.28	326.00	-33.28
SWD	285.50	251.50	-34.00	269.40	280.40	11.00	287.00	258.64	-28.36
Non-SWD	370.36	332.25	-38.11	347.12	336.41	-10.71	367.72	330.67	-37.05
LEP	308.62	294.46	-14.15	307.44	311.89	4.44	305.00	282.20	-22.80
Not LEP	376.35	332.39	-43.96	340.12	330.75	-9.37	356.00	319.45	-36.55
Migrant	*	*	*	319.83	309.83	-10.00	*	*	*
Not Migrant	360.80	324.25	-36.55	337.38	330.05	-7.33	351.28	316.00	-35.28
Female	347.86	312.48	-35.38	325.35	313.97	-11.39	364.07	330.20	-33.87
Male	374.70	334.94	-39.76	344.42	339.97	-4.45	335.29	298.25	-37.04

* Results cannot be published without releasing personally identifiable information based upon the EED reporting protocol

Change in Mean Scale Score in SBA Mathematics by Grade between 2006-07 and 2007-08



Reading: SBA Results Compared for Abbott Loop Elementary School, District and State Grades 3 Through 6															
	% Advanced Proficient			% Proficient			% Below Proficient			% Far Below Proficient			% Tested		
	School	District	State	School	District	State	School	District	State	School	District	State	School	District	State
All Students	22.59%	39.70%	35.67%	51.85%	43.89%	45.50%	17.41%	11.60%	13.02%	8.15%	4.80%	5.80%	96.43%	98.15%	97.98%
AF AM	*	20.73%	22.99%	61.54%	54.18%	53.49%	23.08%	17.79%	16.46%	*	7.30%	7.06%	100.00%	98.04%	97.49%
AKNA/AI	16.13%	20.23%	14.62%	32.26%	51.11%	48.17%	29.03%	18.54%	24.83%	22.58%	10.11%	12.37%	100.00%	96.88%	97.59%
Asian	30.23%	30.22%	28.26%	51.16%	48.71%	51.04%	*	15.32%	15.32%	*	5.75%	5.38%	95.56%	97.64%	97.67%
NH/OPI	*	14.67%	N/A	53.85%	51.03%	N/A	30.77%	24.59%	N/A	*	9.71%	N/A	100.00%	98.98%	N/A
White	31.43%	52.75%	47.28%	44.29%	38.06%	42.41%	15.71%	6.69%	7.27%	8.57%	2.50%	3.03%	95.89%	98.68%	98.28%
Hispanic	20.51%	32.35%	31.74%	61.54%	46.43%	48.60%	10.26%	14.67%	13.66%	7.69%	6.55%	6.00%	92.86%	97.14%	97.32%
ME	20.83%	33.26%	34.76%	62.50%	48.25%	47.75%	*	13.47%	12.80%	*	5.01%	4.70%	96.00%	98.15%	98.03%
EDS	14.60%	22.85%	21.47%	51.82%	49.71%	48.65%	19.71%	19.04%	20.31%	13.87%	8.40%	9.57%	97.16%	97.50%	96.44%
Not EDS	30.83%	51.44%	46.31%	51.88%	39.84%	43.15%	15.04%	6.42%	7.56%	2.26%	2.30%	2.98%	95.68%	98.61%	99.16%
SWD	*	10.08%	9.29%	*	37.10%	37.96%	42.86%	32.15%	31.20%	23.81%	20.67%	21.55%	82.35%	94.28%	93.60%
Non-SWD	25.88%	45.02%	40.09%	56.14%	45.12%	46.77%	12.72%	7.91%	9.98%	5.26%	1.95%	3.17%	99.56%	98.88%	98.75%
LEP	8.33%	4.97%	3.12%	44.44%	39.93%	38.06%	30.56%	37.14%	38.40%	16.67%	17.96%	20.42%	94.74%	94.25%	96.11%
Not LEP	24.79%	42.78%	39.95%	52.99%	44.25%	46.48%	15.38%	9.33%	9.68%	6.84%	3.64%	3.88%	96.69%	98.51%	98.23%
Migrant	*	27.01%	17.29%	45.45%	50.34%	48.58%	36.36%	16.44%	23.78%	*	6.21%	10.35%	100.00%	98.35%	98.50%
Not Migrant	23.55%	40.26%	36.97%	52.12%	43.61%	45.29%	16.60%	11.38%	12.26%	7.72%	4.74%	5.48%	96.28%	98.14%	97.94%
Female	23.08%	44.40%	39.45%	55.94%	43.41%	45.33%	11.89%	8.75%	10.85%	9.09%	3.44%	4.37%	97.28%	98.39%	98.31%
Male	22.05%	35.15%	32.09%	47.24%	44.37%	45.67%	23.62%	14.36%	15.08%	7.09%	6.13%	7.16%	95.49%	97.92%	97.66%

* Results cannot be published without releasing personally identifiable information based upon the EED reporting protocol

Writing: SBA Results Compared for Abbott Loop Elementary School, District and State Grades 3 Through 6															
	% Advanced Proficient			% Proficient			% Below Proficient			% Far Below Proficient			% Tested		
	School	District	State	School	District	State	School	District	State	School	District	State	School	District	State
All Students	21.77%	34.87%	30.49%	44.28%	44.25%	44.50%	30.63%	18.78%	22.32%	3.32%	2.10%	2.69%	96.79%	98.11%	97.96%
AF AM	19.23%	20.71%	20.51%	53.85%	46.71%	48.68%	*	28.71%	27.18%	*	3.88%	3.63%	100.00%	98.15%	97.71%
AKNA/AI	*	17.15%	12.11%	*	45.31%	41.05%	48.39%	33.38%	40.69%	16.13%	4.15%	6.15%	100.00%	96.51%	97.64%
Asian	25.58%	30.17%	28.49%	44.19%	45.92%	45.93%	*	21.33%	23.31%	*	2.58%	2.27%	95.56%	97.56%	97.67%
NH/OPI	*	14.02%	N/A	46.15%	42.89%	N/A	46.15%	39.38%	N/A	*	3.71%	N/A	100.00%	99.18%	N/A
White	25.71%	45.85%	40.04%	45.71%	41.91%	44.71%	*	11.26%	13.97%	*	0.99%	1.28%	95.89%	98.66%	98.22%
Hispanic	30.77%	27.33%	27.00%	41.03%	47.25%	48.36%	*	22.54%	22.23%	*	2.88%	2.41%	92.86%	97.07%	97.36%
ME	22.45%	28.51%	29.14%	48.98%	47.68%	47.29%	*	21.31%	21.37%	*	2.51%	2.20%	98.00%	98.15%	97.96%
EDS	14.49%	18.92%	17.53%	44.20%	47.34%	45.15%	34.78%	29.95%	32.95%	6.52%	3.79%	4.37%	97.87%	97.50%	96.53%
Not EDS	29.32%	45.99%	40.21%	44.36%	42.10%	44.01%	*	10.99%	14.35%	*	0.92%	1.44%	95.68%	98.54%	99.06%
SWD	*	7.09%	6.94%	*	38.82%	37.02%	64.29%	45.96%	47.34%	14.29%	8.12%	8.69%	82.35%	94.28%	93.97%
Non-SWD	25.33%	39.86%	34.45%	48.91%	45.23%	45.76%	24.45%	13.89%	18.11%	1.31%	1.02%	1.69%	100.00%	98.83%	98.66%
LEP	8.33%	4.71%	3.14%	38.89%	37.05%	30.66%	44.44%	50.57%	56.76%	8.33%	7.67%	9.44%	94.74%	94.25%	96.18%
Not LEP	23.83%	37.55%	34.08%	45.11%	44.89%	46.32%	28.51%	15.96%	17.79%	2.55%	1.60%	1.81%	97.11%	98.47%	98.20%
Migrant	*	21.44%	14.20%	36.36%	48.58%	42.55%	36.36%	26.63%	38.57%	*	3.35%	4.68%	100.00%	98.51%	98.58%
Not Migrant	22.31%	35.46%	31.63%	44.62%	44.06%	44.64%	30.38%	18.43%	21.18%	2.69%	2.04%	2.55%	96.65%	98.09%	97.92%
Female	27.97%	42.63%	37.48%	46.15%	42.50%	43.42%	23.78%	13.62%	17.40%	2.10%	1.26%	1.70%	97.28%	98.32%	98.22%
Male	14.84%	27.36%	23.87%	42.19%	45.96%	45.52%	38.28%	23.78%	26.98%	4.69%	2.91%	3.63%	96.24%	97.90%	97.72%

* Results cannot be published without releasing personally identifiable information based upon the EED reporting protocol

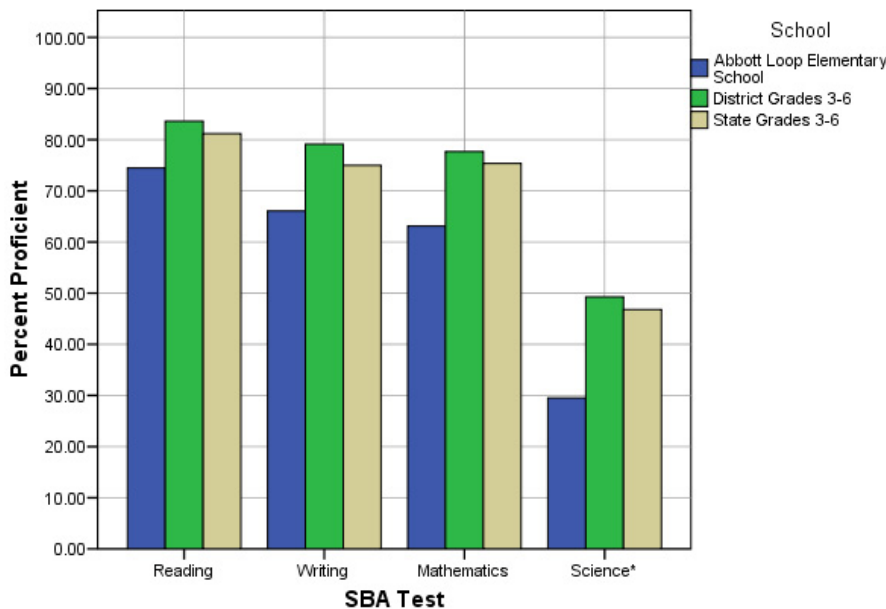
Mathematics: SBA Results Compared for Abbott Loop Elementary School, District and State Grades 3 Through 6															
	% Advanced Proficient			% Proficient			% Below Proficient			% Far Below Proficient			% Tested		
	School	District	State	School	District	State	School	District	State	School	District	State	School	District	State
All Students	18.82%	39.81%	36.08%	44.28%	37.84%	39.26%	20.30%	12.46%	13.78%	16.61%	9.88%	10.88%	96.79%	98.52%	98.12%
AF AM	11.54%	19.48%	22.09%	46.15%	40.14%	41.60%	23.08%	20.19%	18.61%	19.23%	20.19%	17.70%	100.00%	98.38%	97.78%
AKNA/AI	12.90%	23.20%	18.26%	25.81%	39.51%	39.14%	22.58%	19.22%	21.79%	38.71%	18.07%	20.81%	100.00%	96.96%	97.72%
Asian	25.58%	37.02%	34.29%	53.49%	41.20%	41.23%	*	13.76%	14.10%	*	8.03%	10.38%	95.56%	99.27%	98.99%
NH/OPI	*	18.52%	N/A	46.15%	38.07%	N/A	*	20.16%	N/A	38.46%	23.25%	N/A	100.00%	99.39%	N/A
White	24.29%	51.12%	45.75%	37.14%	35.15%	38.35%	24.29%	8.41%	9.81%	14.29%	5.32%	6.09%	95.89%	98.69%	98.17%
Hispanic	17.95%	31.85%	31.11%	56.41%	40.04%	42.19%	12.82%	15.02%	15.10%	12.82%	13.09%	11.60%	92.86%	98.66%	98.47%
ME	16.33%	33.75%	35.45%	46.94%	41.21%	40.61%	24.49%	13.93%	13.30%	12.24%	11.11%	10.64%	98.00%	98.26%	98.00%
EDS	13.04%	24.26%	23.31%	42.03%	41.50%	40.98%	18.84%	17.54%	18.60%	26.09%	16.70%	17.11%	97.87%	98.14%	96.77%
Not EDS	24.81%	50.70%	45.67%	46.62%	35.28%	37.96%	21.80%	8.91%	10.16%	6.77%	5.12%	6.21%	95.68%	98.79%	99.16%
SWD	*	12.52%	12.06%	*	31.53%	32.14%	30.95%	23.68%	23.60%	45.24%	32.27%	32.20%	82.35%	94.19%	93.99%
Non-SWD	21.83%	44.69%	40.12%	48.47%	38.97%	40.45%	18.34%	10.46%	12.13%	11.35%	5.88%	7.30%	100.00%	99.34%	98.85%
LEP	*	8.22%	6.05%	*	36.74%	34.10%	19.44%	24.50%	27.43%	27.78%	30.54%	32.42%	94.74%	97.95%	97.56%
Not LEP	21.28%	42.73%	40.09%	43.40%	37.94%	39.95%	20.43%	11.35%	11.96%	14.89%	7.98%	8.01%	97.11%	98.57%	98.19%
Migrant	*	30.94%	22.37%	36.36%	43.65%	40.27%	*	14.21%	20.36%	36.36%	11.20%	17.00%	100.00%	98.68%	98.54%
Not Migrant	19.23%	40.21%	37.05%	44.62%	37.58%	39.19%	20.38%	12.38%	13.31%	15.77%	9.83%	10.45%	96.65%	98.51%	98.09%
Female	18.18%	41.01%	36.83%	43.36%	38.32%	39.88%	18.88%	11.59%	13.34%	19.58%	9.09%	9.96%	97.28%	98.71%	98.31%
Male	19.53%	38.66%	35.38%	45.31%	37.38%	38.67%	21.88%	13.30%	14.20%	13.28%	10.66%	11.75%	96.24%	98.34%	97.94%

* Results cannot be published without releasing personally identifiable information based upon the EED reporting protocol

Science: SBA Results Compared for Abbott Loop Elementary School, District and State Grade 4															
	% Advanced Proficient			% Proficient			% Below Proficient			% Far Below Proficient			% Tested		
	School	District	State	School	District	State	School	District	State	School	District	State	School	District	State
All Students	9.84%	23.68%	22.1%	19.67%	25.57%	24.7%	40.98%	31.70%	31.3%	29.51%	19.06%	21.9%	95.31%	97.81%	95.35%
AF AM	*	9.18%	8.9%	*	18.84%	23.3%	66.67%	39.13%	38.0%	*	32.85%	29.8%	100.00%	98.57%	94.49%
AKNA/AI	*	6.54%	6.8%	50.00%	21.50%	14.2%	*	42.99%	35.2%	50.00%	28.97%	43.8%	100.00%	96.40%	94.98%
Asian	*	10.18%	13.4%	*	21.40%	19.4%	40.00%	39.30%	37.5%	40.00%	29.12%	29.7%	100.00%	98.28%	97.39%
NH/OPI	*	6.57%	N/A	*	8.03%	N/A	*	34.31%	N/A	*	51.09%	N/A	100.00%	98.56%	N/A
White	*	36.40%	32.3%	*	29.08%	29.9%	46.67%	25.33%	27.3%	26.67%	9.19%	10.5%	88.24%	97.87%	94.97%
Hispanic	*	16.17%	18.2%	36.36%	26.15%	26.0%	36.36%	32.08%	33.9%	*	25.61%	21.9%	91.67%	97.12%	96.39%
ME	*	16.06%	18.5%	*	26.12%	26.8%	55.56%	37.47%	35.9%	*	20.34%	18.7%	100.00%	98.32%	96.90%
EDS	*	8.34%	11.0%	*	22.44%	20.1%	51.61%	38.10%	34.7%	25.81%	31.12%	34.2%	96.88%	97.73%	94.99%
Not EDS	13.33%	35.00%	31.2%	23.33%	27.88%	28.5%	30.00%	26.97%	28.5%	33.33%	10.15%	11.9%	93.75%	97.87%	95.64%
SWD	*	8.38%	7.7%	*	16.38%	15.2%	*	36.57%	36.6%	*	38.67%	40.5%	71.43%	93.25%	91.70%
Non-SWD	10.71%	26.43%	24.7%	17.86%	27.22%	26.4%	41.07%	30.82%	30.4%	30.36%	15.53%	18.5%	98.25%	98.68%	96.04%
LEP	*	2.00%	1.5%	*	5.14%	3.8%	38.46%	34.00%	28.3%	61.54%	58.86%	66.5%	100.00%	96.15%	95.67%
Not LEP	12.50%	26.13%	25.2%	25.00%	27.88%	27.9%	41.67%	31.44%	31.8%	20.83%	14.55%	15.1%	94.12%	98.00%	95.30%
Migrant	*	9.70%	9.0%	*	26.87%	15.3%	*	39.55%	34.3%	*	23.88%	41.4%	50.00%	97.10%	97.32%
Not Migrant	10.00%	24.24%	23.0%	18.33%	25.51%	25.3%	41.67%	31.38%	31.1%	30.00%	18.86%	20.5%	96.77%	97.84%	95.21%
Female	14.29%	22.73%	20.8%	17.86%	25.78%	25.2%	35.71%	33.63%	32.6%	32.14%	17.87%	21.4%	93.33%	98.05%	95.43%
Male	*	24.61%	23.4%	*	25.36%	24.2%	45.45%	29.80%	30.1%	27.27%	20.23%	22.3%	97.06%	97.58%	95.27%

* Results cannot be published without releasing personally identifiable information based upon the EED reporting protocol

2007-08 SBA Results Compared for Abbott Loop Elementary School, District and State

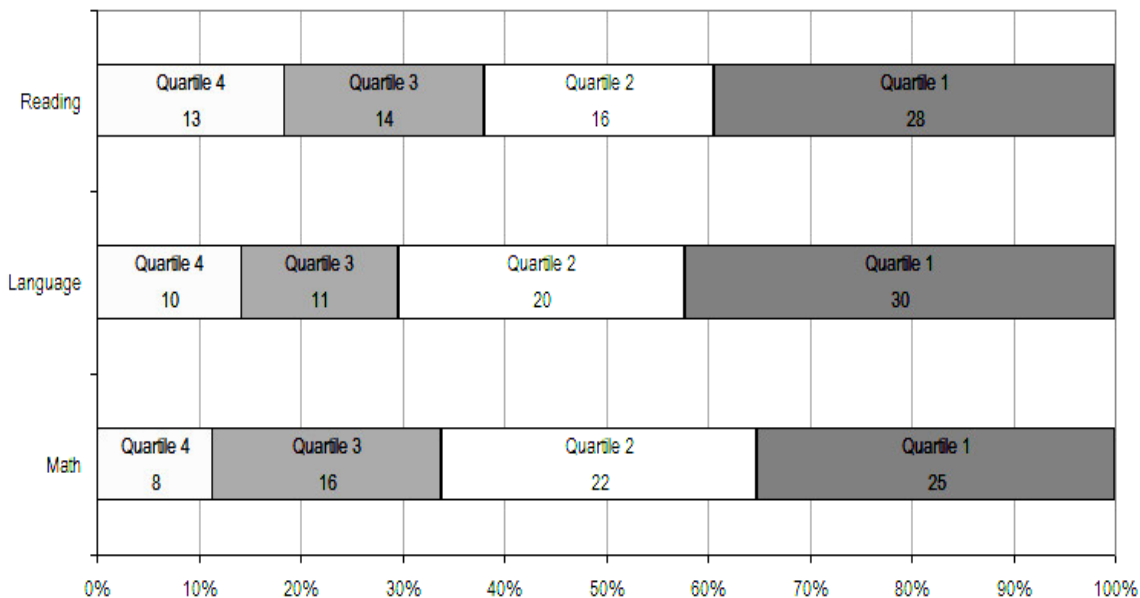


* 2007-08 was the first year Science was administered for grades 4, 8 and 10 on the SBA.

Abbott Loop Elementary School TerraNova Grade 5 Percent in Each Quartile								
Reading	Above Average		Average				Below Average	
	4th Quartile (76-99 percentile)		3rd Quartile (51-75 percentile)		2nd Quartile (26-50 percentile)		1st Quartile (1-25 percentile)	
	School	District	School	District	School	District	School	District
07-08	18.31%	25.65%	19.72%	24.08%	22.54%	23.73%	39.44%	26.55%
06-07	20.4%	33.1%	29.6%	26.1%	35.2%	23.6%	14.8%	17.2%
05-06	21.4%	30.4%	28.6%	26.8%	18.6%	24.5%	31.4%	18.3%
04-05	17.9%	29.2%	43.3%	27.6%	22.4%	24.5%	16.4%	18.7%
03-04	17.5%	30.6%	28.1%	26.9%	29.8%	24.2%	24.6%	18.3%
Language								
07-08	14.08%	26.79%	15.49%	27.20%	28.17%	24.12%	42.25%	21.89%
06-07	16.7%	34.7%	35.2%	26.9%	25.9%	21.4%	22.2%	17.0%
05-06	22.9%	34.0%	28.6%	26.5%	30.0%	22.0%	18.6%	17.5%
04-05	29.9%	32.1%	28.4%	28.3%	26.9%	21.2%	14.9%	18.4%
03-04	22.8%	34.1%	33.3%	26.5%	17.5%	21.7%	26.3%	17.7%
Mathematics								
07-08	11.27%	25.45%	22.54%	26.40%	30.99%	24.47%	35.21%	23.68%
06-07	22.2%	29.7%	31.5%	31.6%	29.6%	21.2%	16.7%	17.4%
05-06	18.6%	28.4%	31.4%	31.9%	21.4%	22.3%	28.6%	17.5%
04-05	16.4%	26.9%	46.3%	31.1%	23.9%	22.9%	13.4%	19.1%
03-04	29.8%	28.3%	21.1%	29.3%	19.3%	22.6%	29.8%	19.8%

The double bold line indicates a change from the TerraNova 2nd edition to the TerraNova 3rd edition.

2007-08 TerraNova 3rd Edition Grade 5 Percent and Count of Students in Each Quartile For Abbott Loop Elementary School



Climate Survey Results for Abbott Loop Elementary School

The Anchorage School District administered the School Climate and Connectedness Surveys in spring 2008 to students in grades 5-12, all school staff and parents/guardians of students in grades K-12. The surveys were done to provide schools with information about perceptions and experiences related to school climate for use in setting school goals and redirecting resources. In the spring of 2008 grades 3 and 4 students were involved in a pilot survey for measuring school climate and connectedness. The results are currently under review by the American Institutes for Research.

Respondents were asked to answer a series of questions that were related to a certain concept. For each item, there were five options from which to choose a response. The answer options ranged from strongly disagree (1) to strongly agree (5).

Student Survey Response Rate Grades 5-12			
	Abbott Loop Elementary School	Overall Elementary Schools	District**
# Surveys Completed	115	5,579	21,629
# Reportable Surveys	102	4,969	18,654
# Students Enrolled*	135	6,331	28,945
Reportable Response Rate	75.56%	78.49%	64.45%

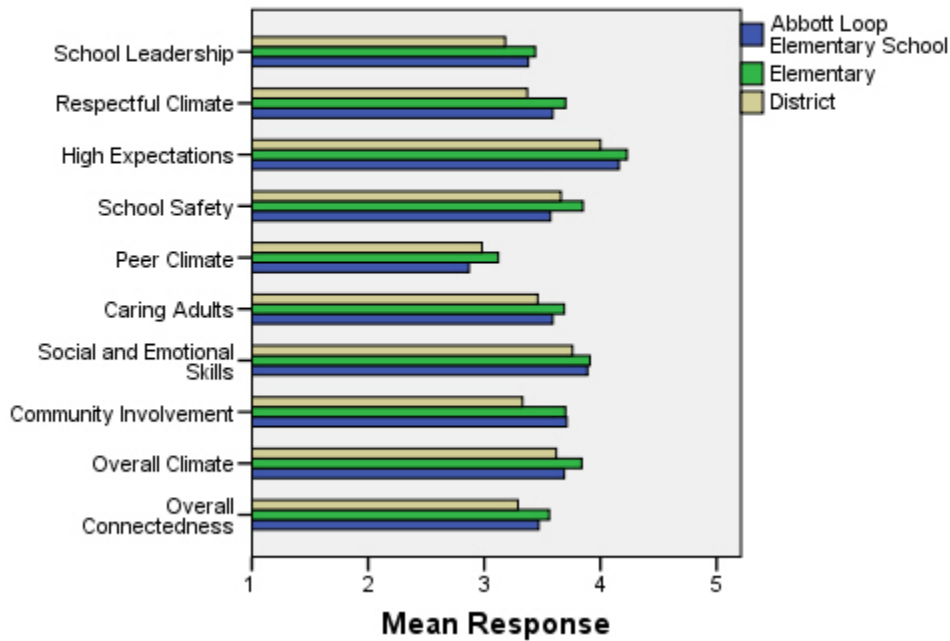
*Number enrolled as of April 1, 2008

**District data does not include KCC responses

Each question in the survey related to a factor or concept, and a score was calculated based on the mean response for the questions related to each factor. The factors measured in the survey were:

- **School Leadership and Student Involvement:** This factor reflects students' feelings about the decision making of school leaders as well as student participation in the school governance. Students selected responses between 1 and 5 where 1 indicates a low level of school leadership and student involvement and 5 indicates a high level of school leadership and student involvement.
- **Respectful Climate:** This factor reflects students' feelings about fairness of rules and respect for students' contributions. Students selected responses between 1 and 5 where 1 indicates a lack of a respectful climate and 5 indicates a highly respectful climate for students.
- **High Expectations:** This factor reflects students' feelings about their own expectations as well as those of adults in their school and community. Students selected responses between 1 and 5 where 1 indicates a lack of high expectations and 5 indicates a high level of high expectations.
- **School Safety:** This factor reflects students' feelings about bullies and gangs at school as well as general crime and violence in the community. Students selected responses between 1 and 5 where 1 indicates a low level of school safety and 5 indicates a high level of school safety.
- **Peer Climate:** This factor reflects students' feelings about how respectful students are to one another and how helpful students are to other students. Students selected responses between 1 and 5 where 1 indicates a more negative peer climate and 5 indicates a very positive peer climate at the school.
- **Caring Adults:** This factor reflects students' feelings about how close they feel to adults in the school. Students selected responses between 1 and 5 where 1 indicates a lack of caring adult relationships and 5 indicates strong caring adult relationships at the school.
- **Social and Emotional Learning:** This factor reflects students' ability to think about the consequences of their actions and to empathize with others. Students selected responses between 1 and 5 where 1 indicates that students at the school perceive themselves as having poorer social and emotional learning, and 5 indicates higher levels of social and emotional learning.
- **Community Involvement:** This factor reflects students' feelings about how supportive and welcoming the school is with parents and the community. Students selected responses between 1 and 5 where 1 indicates a less supportive and welcoming environment and 5 indicates a more supportive and welcoming environment.
- **Overall Climate:** The overall climate score was computed as the mean of three scales: school leadership, high expectations and school safety.
- **Overall Connectedness:** Overall connectedness score was computed as a mean of three scales: respectful climate, peer climate and caring adults.

Climate and Connectedness Student Survey - Abbott Loop



Student Survey Mean Response by Factors Related to School Climate - Overall District			
	Abbott Loop Elementary Schools	Overall Elementary Schools	District
School Leadership	3.38	3.44	3.18
Respectful Climate	3.59	3.70	3.37
High Expectations	4.16	4.23	4.00
School Safety	3.57	3.85	3.66
Peer Climate	2.87	3.12	2.98
Caring Adults	3.59	3.69	3.46
Social and Emotional Skills	3.89	3.91	3.76
Community Involvement	3.71	3.70	3.33
Overall Climate	3.69	3.84	3.62
Overall Connectedness	3.47	3.56	3.29

Range is from a low of 1 to a high of 5

Students were also asked to answer questions related to school danger. The following table provides the responses for those questions:

Student Survey Results of the School Danger Questions - Percent of Students Responding in Each Category					
	0 Times	1-2 Times	3-6 Times	7-12 Times	> 12 Times
Abbott Loop Elementary School					
Under the influence of drugs?	90.20%	5.88%	1.96%	0.00%	1.96%
Under the influence of alcohol?	88.24%	6.86%	1.96%	0.00%	2.94%
Destroy things (vandalism)?	48.51%	25.74%	12.87%	3.96%	8.91%
Get into fights?	13.73%	28.43%	19.61%	14.71%	23.53%
Steal things?	50.00%	26.47%	12.75%	2.94%	7.84%
Threaten or bully?	24.51%	26.47%	20.59%	5.88%	22.55%
Under the influence of inhalants?	53.00%	20.00%	10.00%	7.00%	10.00%
Carry weapons?	75.49%	15.69%	3.92%	1.96%	2.94%
Overall Elementary Schools					
Under the influence of drugs?	91.87%	5.65%	1.22%	0.31%	0.96%
Under the influence of alcohol?	91.42%	6.01%	1.16%	0.51%	0.90%
Destroy things (vandalism)?	46.82%	32.08%	12.45%	3.30%	5.36%
Get into fights?	22.32%	35.75%	22.56%	7.96%	11.41%
Steal things?	49.79%	27.92%	12.01%	4.33%	5.95%
Threaten or bully?	32.34%	28.83%	17.08%	7.78%	13.97%
Under the influence of inhalants?	71.03%	17.07%	6.14%	2.63%	3.12%
Carry weapons?	79.22%	15.35%	3.17%	0.59%	1.68%
District					
Under the influence of drugs?	60.45%	15.05%	9.54%	3.92%	11.04%
Under the influence of alcohol?	63.11%	16.37%	8.90%	4.43%	7.19%
Destroy things (vandalism)?	41.26%	29.47%	15.45%	5.88%	7.94%
Get into fights?	26.40%	35.20%	21.96%	7.11%	9.33%
Steal things?	44.80%	25.68%	13.81%	6.98%	8.74%
Threaten or bully?	32.21%	26.21%	16.68%	9.27%	15.63%
Under the influence of inhalants?	72.79%	14.21%	5.66%	2.48%	4.87%
Carry weapons?	69.45%	19.15%	5.34%	2.01%	4.06%

Student Survey Results of the Mean Factor Score by Ethnicity (Self-Reported)							
	AKNA/AI	AF AM	Hispanic	Asian/NH	White	Other	Multi-Ethnic
Abbott Loop Elementary School							
School Leadership	3.63	2.84	3.24	3.27	3.35	3.43	3.42
Respectful Climate	3.94	3.33	3.60	3.32	3.65	3.52	3.54
High Expectations	4.04	3.83	4.06	4.27	4.21	4.06	4.24
School Safety	3.41	2.76	3.52	3.53	3.74	3.70	3.66
Peer Climate	3.15	2.56	2.72	3.05	2.75	2.97	2.76
Caring Adults	3.69	3.30	3.52	3.19	3.89	3.45	3.61
Social and Emotional Skills	3.93	3.58	3.63	3.91	3.99	3.90	3.85
Community Involvement	3.64	3.25	3.57	3.58	3.83	3.78	3.78
Overall Climate	3.73	3.14	3.61	3.64	3.72	3.66	3.79
Overall Connectedness	3.62	3.61	3.35	3.22	3.55	3.48	3.47
Overall Elementary Schools							
School Leadership	3.56	3.50	3.52	3.55	3.37	3.44	3.42
Respectful Climate	3.75	3.60	3.66	3.72	3.71	3.69	3.63
High Expectations	4.12	4.23	4.23	4.22	4.26	4.19	4.25
School Safety	3.75	3.63	3.73	3.68	4.03	3.66	3.79
Peer Climate	3.12	2.94	3.12	3.18	3.16	3.05	3.05
Caring Adults	3.64	3.73	3.64	3.59	3.74	3.60	3.76
Social and Emotional Skills	3.86	3.84	3.91	3.95	3.93	3.90	3.89
Community Involvement	3.66	3.60	3.67	3.66	3.75	3.66	3.70
Overall Climate	3.81	3.79	3.84	3.81	3.89	3.76	3.82
Overall Connectedness	3.56	3.49	3.51	3.53	3.60	3.49	3.56
District							
School Leadership	3.33	3.14	3.19	3.28	3.14	3.17	3.15
Respectful Climate	3.48	3.18	3.32	3.39	3.39	3.37	3.33
High Expectations	3.98	3.94	3.96	4.02	4.02	4.00	4.01
School Safety	3.60	3.48	3.55	3.47	3.78	3.51	3.62
Peer Climate	3.01	2.85	2.94	3.05	3.00	2.92	2.93
Caring Adults	3.49	3.43	3.37	3.33	3.51	3.42	3.46
Social and Emotional Skills	3.73	3.66	3.73	3.81	3.78	3.75	3.74
Community Involvement	3.37	3.22	3.31	3.29	3.34	3.34	3.31
Overall Climate	3.64	3.52	3.57	3.59	3.65	3.56	3.60
Overall Connectedness	3.33	3.17	3.24	3.26	3.31	3.26	3.27

The response rate is not high enough to provide statistically reliable results for Abbot Loop Elementary School's Staff Survey Results

The response rate is not high enough to provide statistically reliable results for Abbot Loop Elementary School's Parent/Guardian Survey Results.