

### Aurora Elementary School Overview

#### Statement of Program

Aurora Elementary School is located on Elmendorf Air Force Base in the city of Anchorage. Our school motto is “Soaring to success through H.O.P.E. (Having Only Positive Expectations) in a safe, caring and enriching learning environment.” The majority of our students are military dependents, transitioning to and from locations around the world. We are a culturally responsive school, fostering a climate of caring and respect to ensure all students and their families are welcomed and included in school activities.

Aurora provides a comprehensive program of instruction and student expectations that contribute to the academic and social success of our students. In addition to regular K-6 grade classrooms, we provide special education, speech and language, bilingual tutoring and preschool communication services to students who qualify.

We have a successful PTA, student council, and other student-related services activities. Aurora’s staff is second-to-none in providing and promoting a climate conducive to a safe and drug-free learning environment for our families at Aurora.

From the School Report Card

School Goals	
Goal	Level of Achievement
The percentage of students in grades 3-6 rated proficient on the state language arts assessment will increase at least 0.5 percent.	Attained
The percentage of students in grades 3-6 rated proficient on the state math assessment will increase at least 0.5 percent.	Attained

From the School Report Card

Budget*	
2006-07 Actual Expenditures	\$2,006,248
2007-08 Revised Budgeted Amount	\$2,544,201
2008-09 Proposed Budget	\$2,625,013

\*Dollars budgeted or expended are general fund only  
From IFAS

Aurora Elementary School Characteristics			
	School	District	Source of Information
Membership	392	48,858	Fall OASIS
Capacity	75.88%	N/A	2008-18 ASD Capital Improvement Plan
Attendance Rate	95.98%	92.83%	NCLB Summer Data Collection
Retention Rate K-8	1.97%	0.60%	SMS and NCLB Summer Data Collection
Transiency Rate	28.11%	26.07%	NCLB Summer Data Collection
Economically Disadvantaged	168	17,717	Fall OASIS
Average Weekly Volunteer Hours	150	4,660	Department of Education Report Card Report
Students Taking the Alternate Assessment	0	228	SMS
Change in Enrollment	2.35%	-0.76%	Fall Oasis

Teacher Qualification				
Number of Teachers	Percent Fully Licensed	Percent With Advanced Degrees	Number Nationally Board Certified	Percent of Classes Taught by "Highly Qualified Teachers"
29	100.00%	27.58%	0	100.00%

Aurora Elementary School Business Partnerships
First National Bank Alaska, Elmendorf Air Force Base branch

From the School Report Card

Ethnicity Report							
African-American/Black	Alaska Native/American Indian	Asian	Native Hawaiian/Other Pacific Islander	White	Hispanic	Multi-Ethnic	Total
48	5	6	3	245	47	38	392

From Fall Oasis

Full Academic Year		
Students Enrolled	Students Enrolled for FAY	Percent FAY
414	354	85.51%

From participation file (Grades 3-10)

**Aurora Elementary School  
2007-08 Adequate Yearly Progress  
Status Report**

Meets AYP

AMO For Language Arts: 77.18%  
AMO For Mathematics: 66.09%

Group	Participation Rate				"FAY" (D) Tested & Enrolled "FAY"	Language Arts Performance				Mathematics Performance			
	(A) Number Enrolled	(B) Number Tested	Participation Rate (%)	(C) Participation Rate Met		(E) Proficient on LA	(F) Percent Proficient on LA	(G) LA Target	(H) Met AMO for LA	(I) Proficient on Mathematics	(J) Percent Proficient in Mathematics	(K) Mathematics Target	(L) Met AMO for Mathematics
All Students	232	232	100%	Yes	202	187	92.6%	70.3%	Yes	185	91.6%	58.3%	Yes
AF AM	28	28	100%	Yes	26	***	≥90%	58%	Yes	22	84.6%	44.5%	Yes
AKNA/AI	<5	<5	N/A	N/A	N/A	N/A	N/A	N/A	N/A	N/A	N/A	N/A	N/A
Asian/NH/OPI	7	7	N/A	N/A	N/A	N/A	N/A	N/A	N/A	N/A	N/A	N/A	N/A
White	149	149	100%	Yes	128	118	92.2%	68.5%	Yes	118	92.2%	56.3%	Yes
Hispanic	26	26	100%	Yes	N/A	N/A	N/A	N/A	N/A	N/A	N/A	N/A	N/A
ME	19	19	N/A	N/A	N/A	N/A	N/A	N/A	N/A	N/A	N/A	N/A	N/A
EDS	90	90	100%	Yes	77	69	89.6%	66%	Yes	72	93.5%	53.5%	Yes
SWD	34	34	100%	Yes	31	22	71%	59.6%	Yes	24	77.4%	46.3%	Yes
LEP	13	13	N/A	N/A	N/A	N/A	N/A	N/A	N/A	N/A	N/A	N/A	N/A

Attendance Rate: Met

96.0% (Threshold is 85%)

N/A is used to indicate:

- (1) Subgroups with 20 or fewer students enrolled on the first day of testing shall not be included in participation rate calculation.
- (2) Subgroups with 25 or fewer students enrolled for the "full academic year" shall not have the performance score computed.

\* For the groups where the number enrolled is less than or equal to 40, participation is met when no more than two miss the test. Groups can also meet this target using the average of the past two or three years.

\*\* When a group achieves a "Yes" without meeting the listed target, it has done so using either the 99% confidence interval or Safe Harbor.

\*\*\* The results cannot be published without releasing personally identifiable information based upon the EED reporting protocol.

This document was prepared by the ASD Assessment and Evaluation Department.

7/10/2008

Aurora Elementary School  
2007-08 Adequate Yearly Progress  
Growth Report

The AYP growth reports are generated by the Alaska State Department of Education and Early Development. The reports can be found online at: [http://www.asdk12.org/depts/assess\\_eval/AYP/State\\_ASD\\_AYG\\_0708.pdf](http://www.asdk12.org/depts/assess_eval/AYP/State_ASD_AYG_0708.pdf)

SBA Proficiency Comparison by Grade for Aurora Elementary School																
	Reading Percent Proficient				Writing Percent Proficient				Mathematics Percent Proficient				Science* Percent Proficient			
	04-05	05-06	06-07	07-08	04-05	05-06	06-07	07-08	04-05	05-06	06-07	07-08	04-05	05-06	06-07	07-08
All Students	90.10%	90.00%	92.89%	92.24%	90.10%	90.00%	90.05%	88.74%	79.17%	80.95%	83.96%	91.30%	N/A	N/A	N/A	55.00%
Grade 3	90.16%	89.66%	95% or more	89.55%	91.80%	89.66%	95% or more	88.06%	90.16%	85.96%	92.86%	89.55%	N/A	N/A	N/A	N/A
Grade 4	90.20%	85.42%	88.41%	95% or more	90.20%	87.50%	89.86%	95.00%	78.43%	72.92%	84.06%	93.33%	N/A	N/A	N/A	55.00%
Grade 5	90.48%	95% or more	91.11%	90.38%	88.10%	95% or more	84.44%	84.31%	73.81%	84.78%	82.22%	86.27%	N/A	N/A	N/A	N/A
Grade 6	89.47%	89.47%	92.86%	90.57%	89.47%	86.84%	85.71%	86.79%	68.42%	78.95%	73.81%	95% or more	N/A	N/A	N/A	N/A

\* 2007-08 was the first year Science was administered for grades 4, 8 and 10 on the SBA.

SBA Proficient & Not Proficient by NCLB Groups for Aurora Elementary School								
	Reading		Writing		Mathematics		Science**	
	Percent Proficient	Percent Not Proficient	Percent Proficient	Percent Not Proficient	Percent Proficient	Percent Not Proficient	Percent Proficient	Percent Not Proficient
All Students	92.24%	7.76%	88.74%	11.26%	91.30%	8.70%	55.00%	45.00%
AF AM	89.29%	10.71%	90% or more	10% or fewer	85.71%	14.29%	50.00%	50.00%
AKNA/AI	*	*	*	*	*	*	*	*
Asian	60% or more	40% or fewer	60% or more	40% or fewer	60% or more	40% or fewer	*	*
NH/OPI	*	*	*	*	*	*	*	*
White	93.96%	6.04%	87.84%	12.16%	92.52%	7.48%	61.54%	38.46%
Hispanic	90% or more	10% or fewer	90% or more	10% or fewer	90% or more	10% or fewer	37.50%	62.50%
ME	84.21%	15.79%	84.21%	15.79%	80% or more	20% or fewer	*	*
EDS	92.22%	7.78%	84.44%	15.56%	92.13%	7.87%	54.17%	45.83%
Non-EDS	92.25%	7.75%	91.49%	8.51%	90.78%	9.22%	55.56%	44.44%
SWD	67.74%	32.26%	60.00%	40.00%	73.33%	26.67%	60% or fewer	40% or more
Non-SWD	96.02%	3.98%	93.03%	6.97%	94.00%	6.00%	58.18%	41.82%
LEP	80% or more	20% or fewer	80% or more	20% or fewer	72.73%	27.27%	60% or fewer	40% or more
Not LEP	92.76%	7.24%	88.64%	11.36%	92.24%	7.76%	58.18%	41.82%
Migrant	*	*	*	*	*	*	*	*
Not Migrant	92.24%	7.76%	88.74%	11.26%	91.30%	8.70%	55.00%	45.00%
Female	95.83%	4.17%	94.74%	5.26%	93.62%	6.38%	40.91%	59.09%
Male	89.71%	10.29%	84.56%	15.44%	89.71%	10.29%	63.16%	36.84%

\* Results cannot be published without releasing personally identifiable information based upon the EED reporting protocol

\*\* 2007-08 was the first year Science was administered for grades 4, 8 and 10 on the SBA.

SBA Mean Scale Score Comparison by NCLB Groups for Aurora Elementary School								
	Reading		Writing		Mathematics		Science***	
	06-07	07-08	06-07	07-08	06-07	07-08	06-07	07-08
All Students	393.45	390.23	399.68	384.31	367.93	371.28	N/A	315.03
AF AM	359.77	370.04	365.13	362.32	330.57	348.14	N/A	277.83
AKNA/AI	480.00	*	579.00	*	466.00	*	N/A	*
Asian	394.00**	363.67	407.60**	372.00	396.73**	363.83	N/A	*
NH/OPI	N/A	*	N/A	*	N/A	*	N/A	*
White	401.32	394.32	408.18	388.26	374.01	377.00	N/A	323.82
Hispanic	389.13	412.54	390.25	407.88	373.38	380.12	N/A	313.13
ME	388.96	371.95	388.04	363.95	361.65	345.63	N/A	*
EDS	381.40	383.13	387.80	379.33	357.71	366.46	N/A	311.46
Non-EDS	401.12	394.73	407.22	387.49	374.38	374.32	N/A	317.42
SWD	323.30	334.97	325.05	316.53	312.70	334.57	N/A	268.80
Non-SWD	400.80	398.75	407.49	394.43	373.69	376.79	N/A	319.24
LEP	407.14	367.55	400.29	379.45	357.63	353.55	N/A	285.20
Not LEP	392.99	391.36	399.66	384.55	368.34	372.17	N/A	317.75
Migrant	*	*	*	*	*	*	N/A	*
Not Migrant	393.45	390.23	399.68	384.31	367.93	371.28	N/A	315.03
Female	403.04	393.85	420.29	392.09	369.09	370.77	N/A	288.95
Male	386.18	387.67	384.05	378.88	367.07	371.63	N/A	330.13

\* Results cannot be published without releasing personally identifiable information based upon the EED reporting protocol

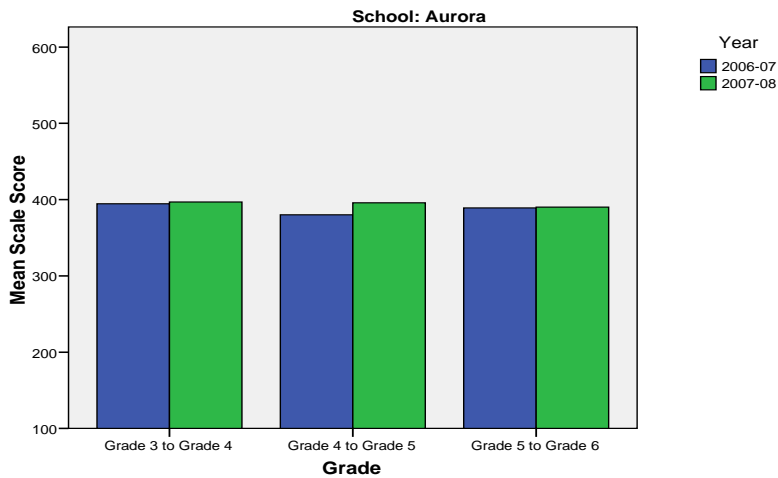
\*\* Prior to 2007-08 the Asian category includes Native Hawaiian/Other Pacific Islander. In 2007-08 Native Hawaiian/Other Pacific Islander is a separate ethnic category.

\*\*\* 2007-08 was the first year Science was administered for grades 4, 8 and 10 on the SBA.

Aurora Elementary School SBA Change Average Scale Score by NCLB Groups: Reading									
	Average Scale Score of Students Tested in District Both Years			Average Scale Score of Students Tested in District Both Years			Average Scale Score of Students Tested in District Both Years		
	Grade 3 in 06-07	Grade 4 in 07-08	Difference	Grade 4-in 06-07	Grade 5 in 07-08	Difference	Grade 5-in 06-07	Grade 6 in 07-08	Difference
All Students	394.60	397.00	2.40	380.11	395.84	15.73	389.16	390.11	0.95
AF AM	*	*	*	355.40	357.40	2.00	345.50	361.83	16.33
AKNA/AI	*	*	*	*	*	*	*	*	*
Asian	*	*	*	*	*	*	*	*	*
NH/OPI	*	*	*	*	*	*	*	*	*
White	399.41	395.04	-4.37	375.60	394.27	18.67	407.32	401.64	-5.68
Hispanic	392.86	418.29	25.43	*	*	*	*	*	*
ME	*	*	*	370.80	389.00	18.20	*	*	*
EDS	394.44	397.25	2.81	374.91	378.82	3.91	365.87	379.40	13.53
Non-EDS	394.69	396.85	2.15	381.85	401.52	19.67	404.35	397.09	-7.26
SWD	333.20	352.80	19.60	299.40	331.60	32.20	328.80	350.40	21.60
Non-SWD	402.89	402.97	0.08	390.46	404.08	13.62	398.30	396.12	-2.18
LEP	*	*	*	*	*	*	*	*	*
Not LEP	396.58	398.38	1.80	378.07	395.16	17.09	387.00	388.03	1.03
Migrant	*	*	*	*	*	*	*	*	*
Not Migrant	394.60	397.00	2.40	380.11	395.84	15.73	389.16	390.11	0.95
Female	380.61	382.94	2.33	394.40	408.50	14.10	418.18	414.82	-3.35
Male	405.08	407.54	2.46	368.21	385.29	17.08	365.67	370.10	4.43

\* Results cannot be published without releasing personally identifiable information based upon the EED reporting protocol

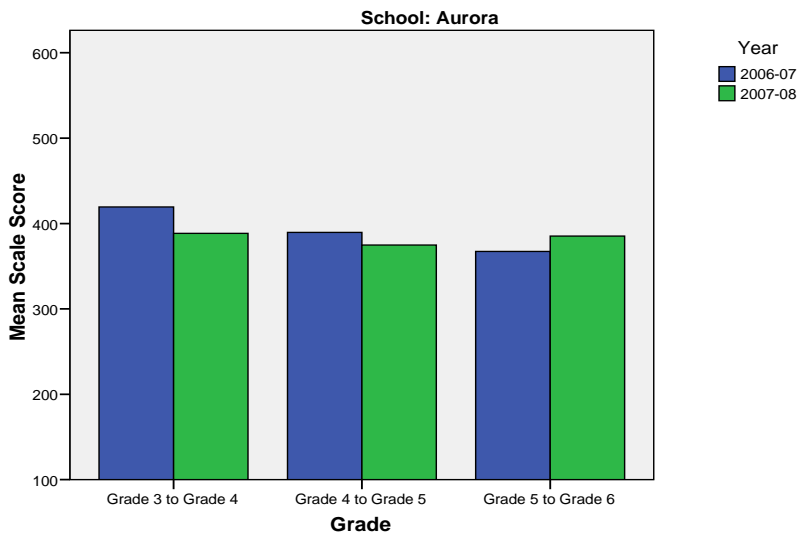
**Change in Mean Scale Score in SBA Reading by Grade Between 2006-07 and 2007-08**



Aurora Elementary School SBA Change Average Scale Score by NCLB Groups: Writing									
	Average Scale Score of Students Tested in District Both Years			Average Scale Score of Students Tested in District Both Years			Average Scale Score of Students Tested in District Both Years		
	Grade 3 in 06-07	Grade 4 in 07-08	Difference	Grade 4- in 06-07	Grade 5 in 07-08	Difference	Grade 5- in 06-07	Grade 6 in 07-08	Difference
All Students	419.40	388.45	-30.95	389.65	374.81	-14.84	367.32	385.18	17.87
AF AM	*	*	*	351.20	352.20	1.00	336.50	352.33	15.83
AKNA/AI	*	*	*	*	*	*	*	*	*
Asian	*	*	*	*	*	*	*	*	*
NH/OPI	*	*	*	*	*	*	*	*	*
White	416.74	383.15	-33.59	382.10	368.28	-13.83	383.04	395.04	12.00
Hispanic	438.57	416.71	-21.86	*	*	*	*	*	*
ME	*	*	*	378.20	366.60	-11.60	*	*	*
EDS	411.56	383.50	-28.06	377.82	355.27	-22.55	360.60	375.13	14.53
Non-EDS	424.23	391.50	-32.73	393.72	381.53	-12.19	371.70	391.74	20.04
SWD	369.20	340.00	-29.20	*	*	*	339.80	301.80	-38.00
Non-SWD	426.19	395.00	-31.19	397.62	381.74	-15.87	371.48	397.82	26.33
LEP	*	*	*	*	*	*	*	*	*
Not LEP	421.58	389.65	-31.93	388.26	372.33	-15.93	363.84	382.84	19.00
Migrant	*	*	*	*	*	*	*	*	*
Not Migrant	419.40	388.45	-30.95	389.65	374.81	-14.84	367.32	385.18	17.87
Female	413.83	387.44	-26.39	427.42	387.26	-40.16	394.24	415.06	20.82
Male	423.58	389.21	-34.38	359.75	364.96	5.21	345.52	361.00	15.48

\* Results cannot be published without releasing personally identifiable information based upon the EED reporting protocol

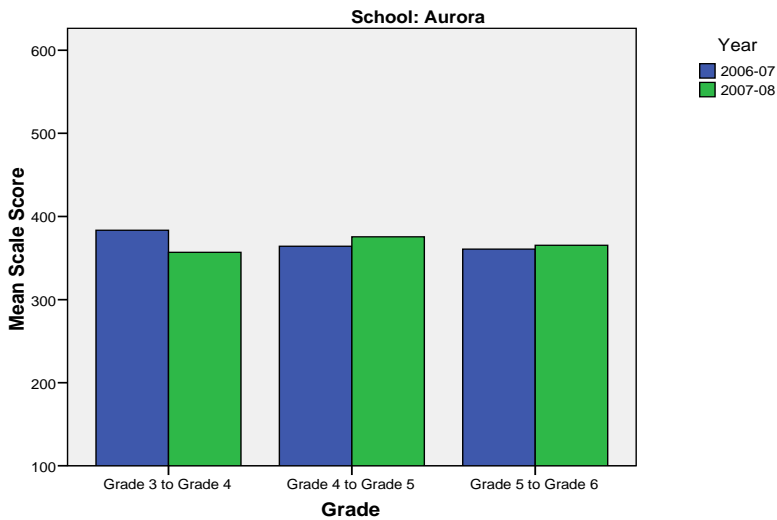
**Change in Mean Scale Score in SBA Writing by Grade between 2006-07 and 2007-08**



Aurora Elementary School SBA Change Average Scale Score by NCLB Groups: Mathematics									
	Average Scale Score of Students Tested in District Both Years			Average Scale Score of Students Tested in District Both Years			Average Scale Score of Students Tested in District Both Years		
	Grade 3 in 06-07	Grade 4 in 07-08	Difference	Grade 4- in 06-07	Grade 5 in 07-08	Difference	Grade 5- in 06-07	Grade 6 in 07-08	Difference
All Students	383.40	356.86	-26.53	364.26	375.56	11.30	360.73	365.38	4.65
AF AM	*	*	*	323.80	333.80	10.00	329.33	347.00	17.67
AKNA/AI	*	*	*	*	*	*	*	*	*
Asian	*	*	*	*	*	*	*	*	*
NH/OPI	*	*	*	*	*	*	*	*	*
White	387.70	356.15	-31.56	366.72	377.79	11.07	376.00	375.29	-0.71
Hispanic	386.43	365.14	-21.29	*	*	*	*	*	*
ME	*	*	*	333.80	358.40	24.60	*	*	*
EDS	382.69	359.50	-23.19	339.55	358.91	19.36	358.79	363.14	4.36
Non-EDS	383.81	355.30	-28.52	372.75	381.28	8.53	361.91	366.74	4.83
SWD	346.60	337.60	-9.00	*	*	*	342.60	329.80	-12.80
Non-SWD	388.24	359.39	-28.84	367.87	378.00	10.13	363.56	370.94	7.38
LEP	*	*	*	*	*	*	*	*	*
Not LEP	386.03	358.80	-27.23	363.14	375.48	12.33	354.08	363.81	9.72
Migrant	*	*	*	*	*	*	*	*	*
Not Migrant	383.40	356.86	-26.53	364.26	375.56	11.30	360.73	365.38	4.65
Female	371.00	338.06	-32.94	367.05	382.37	15.32	387.38	389.94	2.56
Male	392.32	370.40	-21.92	362.04	370.17	8.13	340.43	346.67	6.24

\* Results cannot be published without releasing personally identifiable information based upon the EED reporting protocol

**Change in Mean Scale Score in SBA Mathematics by Grade between 2006-07 and 2007-08**



Reading: SBA Results Compared for Aurora Elementary School, District and State Grades 3 Through 6															
	% Advanced Proficient			% Proficient			% Below Proficient			% Far Below Proficient			% Tested		
	School	District	State	School	District	State	School	District	State	School	District	State	School	District	State
All Students	42.24%	39.70%	35.67%	50.00%	43.89%	45.50%	6.47%	11.60%	13.02%	1.29%	4.80%	5.80%	100.00%	98.15%	97.98%
AF AM	25.00%	20.73%	22.99%	64.29%	54.18%	53.49%	*	17.79%	16.46%	*	7.30%	7.06%	100.00%	98.04%	97.49%
AKNA/AI	*	20.23%	14.62%	*	51.11%	48.17%	*	18.54%	24.83%	*	10.11%	12.37%	100.00%	96.88%	97.59%
Asian	*	30.22%	28.26%	66.67%	48.71%	51.04%	*	15.32%	15.32%	*	5.75%	5.38%	100.00%	97.64%	97.67%
NH/OPI	*	14.67%	N/A	*	51.03%	N/A	*	24.59%	N/A	*	9.71%	N/A	100.00%	98.98%	N/A
White	44.97%	52.75%	47.28%	48.99%	38.06%	42.41%	*	6.69%	7.27%	*	2.50%	3.03%	100.00%	98.68%	98.28%
Hispanic	61.54%	32.35%	31.74%	34.62%	46.43%	48.60%	*	14.67%	13.66%	*	6.55%	6.00%	100.00%	97.14%	97.32%
ME	31.58%	33.26%	34.76%	52.63%	48.25%	47.75%	*	13.47%	12.80%	*	5.01%	4.70%	100.00%	98.15%	98.03%
EDS	42.22%	22.85%	21.47%	50.00%	49.71%	48.65%	*	19.04%	20.31%	*	8.40%	9.57%	100.00%	97.50%	96.44%
Not EDS	42.25%	51.44%	46.31%	50.00%	39.84%	43.15%	*	6.42%	7.56%	*	2.30%	2.98%	100.00%	98.61%	99.16%
SWD	19.35%	10.08%	9.29%	48.39%	37.10%	37.96%	*	32.15%	31.20%	*	20.67%	21.55%	100.00%	94.28%	93.60%
Non-SWD	45.77%	45.02%	40.09%	50.25%	45.12%	46.77%	*	7.91%	9.98%	*	1.95%	3.17%	100.00%	98.88%	98.75%
LEP	*	4.97%	3.12%	63.64%	39.93%	38.06%	*	37.14%	38.40%	*	17.96%	20.42%	100.00%	94.25%	96.11%
Not LEP	43.44%	42.78%	39.95%	49.32%	44.25%	46.48%	5.88%	9.33%	9.68%	1.36%	3.64%	3.88%	100.00%	98.51%	98.23%
Migrant	*	27.01%	17.29%	*	50.34%	48.58%	*	16.44%	23.78%	*	6.21%	10.35%	N/A	98.35%	98.50%
Not Migrant	42.24%	40.26%	36.97%	50.00%	43.61%	45.29%	6.47%	11.38%	12.26%	1.29%	4.74%	5.48%	100.00%	98.14%	97.94%
Female	42.71%	44.40%	39.45%	53.13%	43.41%	45.33%	*	8.75%	10.85%	*	3.44%	4.37%	100.00%	98.39%	98.31%
Male	41.91%	35.15%	32.09%	47.79%	44.37%	45.67%	*	14.36%	15.08%	*	6.13%	7.16%	100.00%	97.92%	97.66%

\* Results cannot be published without releasing personally identifiable information based upon the EED reporting protocol

Writing: SBA Results Compared for Aurora Elementary School, District and State Grades 3 Through 6															
	% Advanced Proficient			% Proficient			% Below Proficient			% Far Below Proficient			% Tested		
	School	District	State	School	District	State	School	District	State	School	District	State	School	District	State
All Students	32.90%	34.87%	30.49%	55.84%	44.25%	44.50%	*	18.78%	22.32%	*	2.10%	2.69%	99.57%	98.11%	97.96%
AF AM	17.86%	20.71%	20.51%	75.00%	46.71%	48.68%	*	28.71%	27.18%	*	3.88%	3.63%	100.00%	98.15%	97.71%
AKNA/AI	*	17.15%	12.11%	*	45.31%	41.05%	*	33.38%	40.69%	*	4.15%	6.15%	100.00%	96.51%	97.64%
Asian	*	30.17%	28.49%	83.33%	45.92%	45.93%	*	21.33%	23.31%	*	2.58%	2.27%	100.00%	97.56%	97.67%
NH/OPI	*	14.02%	N/A	*	42.89%	N/A	*	39.38%	N/A	*	3.71%	N/A	100.00%	99.18%	N/A
White	35.14%	45.85%	40.04%	52.70%	41.91%	44.71%	*	11.26%	13.97%	*	0.99%	1.28%	99.33%	98.66%	98.22%
Hispanic	50.00%	27.33%	27.00%	42.31%	47.25%	48.36%	*	22.54%	22.23%	*	2.88%	2.41%	100.00%	97.07%	97.36%
ME	21.05%	28.51%	29.14%	63.16%	47.68%	47.29%	*	21.31%	21.37%	*	2.51%	2.20%	100.00%	98.15%	97.96%
EDS	27.78%	18.92%	17.53%	56.67%	47.34%	45.15%	*	29.95%	32.95%	*	3.79%	4.37%	100.00%	97.50%	96.53%
Not EDS	36.17%	45.99%	40.21%	55.32%	42.10%	44.01%	*	10.99%	14.35%	*	0.92%	1.44%	99.30%	98.54%	99.06%
SWD	10.00%	7.09%	6.94%	50.00%	38.82%	37.02%	*	45.96%	47.34%	*	8.12%	8.69%	96.77%	94.28%	93.97%
Non-SWD	36.32%	39.86%	34.45%	56.72%	45.23%	45.76%	*	13.89%	18.11%	*	1.02%	1.69%	100.00%	98.83%	98.66%
LEP	27.27%	4.71%	3.14%	63.64%	37.05%	30.66%	*	50.57%	56.76%	*	7.67%	9.44%	100.00%	94.25%	96.18%
Not LEP	33.18%	37.55%	34.08%	55.45%	44.89%	46.32%	*	15.96%	17.79%	*	1.60%	1.81%	99.55%	98.47%	98.20%
Migrant	*	21.44%	14.20%	*	48.58%	42.55%	*	26.63%	38.57%	*	3.35%	4.68%	N/A	98.51%	98.58%
Not Migrant	32.90%	35.46%	31.63%	55.84%	44.06%	44.64%	*	18.43%	21.18%	*	2.04%	2.55%	99.57%	98.09%	97.92%
Female	32.63%	42.63%	37.48%	62.11%	42.50%	43.42%	*	13.62%	17.40%	*	1.26%	1.70%	98.96%	98.32%	98.22%
Male	33.09%	27.36%	23.87%	51.47%	45.96%	45.52%	*	23.78%	26.98%	*	2.91%	3.63%	100.00%	97.90%	97.72%

\* Results cannot be published without releasing personally identifiable information based upon the EED reporting protocol

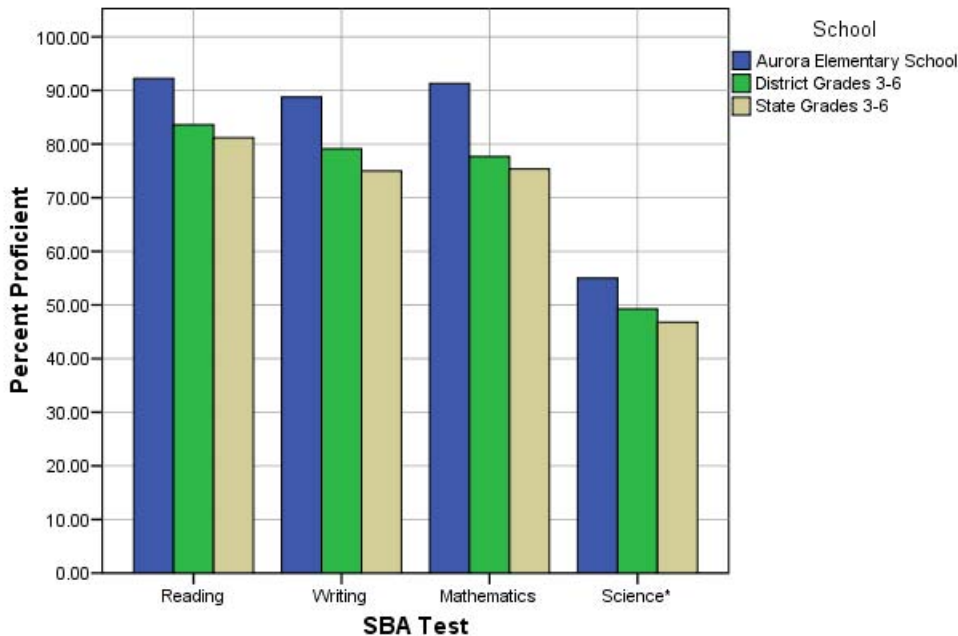
Mathematics: SBA Results Compared for Aurora Elementary School, District and State Grades 3 Through 6															
	% Advanced Proficient			% Proficient			% Below Proficient			% Far Below Proficient			% Tested		
	School	District	State	School	District	State	School	District	State	School	District	State	School	District	State
All Students	39.57%	39.81%	36.08%	51.74%	37.84%	39.26%	6.96%	12.46%	13.78%	1.74%	9.88%	10.88%	99.14%	98.52%	98.12%
AF AM	21.43%	19.48%	22.09%	64.29%	40.14%	41.60%	*	20.19%	18.61%	*	20.19%	17.70%	100.00%	98.38%	97.78%
AKNA/AI	*	23.20%	18.26%	*	39.51%	39.14%	*	19.22%	21.79%	*	18.07%	20.81%	100.00%	96.96%	97.72%
Asian	*	37.02%	34.29%	50.00%	41.20%	41.23%	*	13.76%	14.10%	*	8.03%	10.38%	100.00%	99.27%	98.99%
NH/OPI	*	18.52%	N/A	*	38.07%	N/A	*	20.16%	N/A	*	23.25%	N/A	100.00%	99.39%	N/A
White	43.54%	51.12%	45.75%	48.98%	35.15%	38.35%	5.44%	8.41%	9.81%	2.04%	5.32%	6.09%	98.66%	98.69%	98.17%
Hispanic	53.85%	31.85%	31.11%	38.46%	40.04%	42.19%	*	15.02%	15.10%	*	13.09%	11.60%	100.00%	98.66%	98.47%
ME	15.79%	33.75%	35.45%	73.68%	41.21%	40.61%	*	13.93%	13.30%	*	11.11%	10.64%	100.00%	98.26%	98.00%
EDS	40.45%	24.26%	23.31%	51.69%	41.50%	40.98%	*	17.54%	18.60%	*	16.70%	17.11%	98.89%	98.14%	96.77%
Not EDS	39.01%	50.70%	45.67%	51.77%	35.28%	37.96%	7.09%	8.91%	10.16%	2.13%	5.12%	6.21%	99.30%	98.79%	99.16%
SWD	20.00%	12.52%	12.06%	53.33%	31.53%	32.14%	16.67%	23.68%	23.60%	10.00%	32.27%	32.20%	96.77%	94.19%	93.99%
Non-SWD	42.50%	44.69%	40.12%	51.50%	38.97%	40.45%	*	10.46%	12.13%	*	5.88%	7.30%	99.50%	99.34%	98.85%
LEP	36.36%	8.22%	6.05%	36.36%	36.74%	34.10%	*	24.50%	27.43%	*	30.54%	32.42%	100.00%	97.95%	97.56%
Not LEP	39.73%	42.73%	40.09%	52.51%	37.94%	39.95%	6.39%	11.35%	11.96%	1.37%	7.98%	8.01%	99.10%	98.57%	98.19%
Migrant	*	30.94%	22.37%	*	43.65%	40.27%	*	14.21%	20.36%	*	11.20%	17.00%	N/A	98.68%	98.54%
Not Migrant	39.57%	40.21%	37.05%	51.74%	37.58%	39.19%	6.96%	12.38%	13.31%	1.74%	9.83%	10.45%	99.14%	98.51%	98.09%
Female	37.23%	41.01%	36.83%	56.38%	38.32%	39.88%	*	11.59%	13.34%	*	9.09%	9.96%	97.92%	98.71%	98.31%
Male	41.18%	38.66%	35.38%	48.53%	37.38%	38.67%	*	13.30%	14.20%	*	10.66%	11.75%	100.00%	98.34%	97.94%

\* Results cannot be published without releasing personally identifiable information based upon the EED reporting protocol

Science: SBA Results Compared for Aurora Elementary School, District and State Grade 4															
	% Advanced Proficient			% Proficient			% Below Proficient			% Far Below Proficient			% Tested		
	School	District	State	School	District	State	School	District	State	School	District	State	School	District	State
All Students	21.67%	23.68%	22.1%	33.33%	25.57%	24.7%	*	31.70%	31.3%	*	19.06%	21.9%	100.00%	97.81%	95.35%
AF AM	*	9.18%	8.9%	*	18.84%	23.3%	*	39.13%	38.0%	*	32.85%	29.8%	100.00%	98.57%	94.49%
AKNA/AI	*	6.54%	6.8%	*	21.50%	14.2%	*	42.99%	35.2%	*	28.97%	43.8%	N/A	96.40%	94.98%
Asian	*	10.18%	13.4%	*	21.40%	19.4%	*	39.30%	37.5%	*	29.12%	29.7%	100.00%	98.28%	97.39%
NH/OPI	*	6.57%	N/A	*	8.03%	N/A	*	34.31%	N/A	*	51.09%	N/A	N/A	98.56%	N/A
White	25.64%	36.40%	32.3%	35.90%	29.08%	29.9%	*	25.33%	27.3%	*	9.19%	10.5%	100.00%	97.87%	94.97%
Hispanic	*	16.17%	18.2%	*	26.15%	26.0%	62.50%	32.08%	33.9%	*	25.61%	21.9%	100.00%	97.12%	96.39%
ME	*	16.06%	18.5%	*	26.12%	26.8%	*	37.47%	35.9%	*	20.34%	18.7%	100.00%	98.32%	96.90%
EDS	25.00%	8.34%	11.0%	29.17%	22.44%	20.1%	*	38.10%	34.7%	*	31.12%	34.2%	100.00%	97.73%	94.99%
Not EDS	19.44%	35.00%	31.2%	36.11%	27.88%	28.5%	*	26.97%	28.5%	*	10.15%	11.9%	100.00%	97.87%	95.64%
SWD	*	8.38%	7.7%	*	16.38%	15.2%	60.00%	36.57%	36.6%	*	38.67%	40.5%	100.00%	93.25%	91.70%
Non-SWD	23.64%	26.43%	24.7%	34.55%	27.22%	26.4%	*	30.82%	30.4%	*	15.53%	18.5%	100.00%	98.68%	96.04%
LEP	*	2.00%	1.5%	*	5.14%	3.8%	80.00%	34.00%	28.3%	*	58.86%	66.5%	100.00%	96.15%	95.67%
Not LEP	23.64%	26.13%	25.2%	34.55%	27.88%	27.9%	*	31.44%	31.8%	*	14.55%	15.1%	100.00%	98.00%	95.30%
Migrant	*	9.70%	9.0%	*	26.87%	15.3%	*	39.55%	34.3%	*	23.88%	41.4%	N/A	97.10%	97.32%
Not Migrant	21.67%	24.24%	23.0%	33.33%	25.51%	25.3%	*	31.38%	31.1%	*	18.86%	20.5%	100.00%	97.84%	95.21%
Female	*	22.73%	20.8%	36.36%	25.78%	25.2%	54.55%	33.63%	32.6%	*	17.87%	21.4%	100.00%	98.05%	95.43%
Male	31.58%	24.61%	23.4%	31.58%	25.36%	24.2%	*	29.80%	30.1%	*	20.23%	22.3%	100.00%	97.58%	95.27%

\* Results cannot be published without releasing personally identifiable information based upon the EED reporting protocol

**2007-08 SBA Results Compared for Aurora Elementary School, District and State**

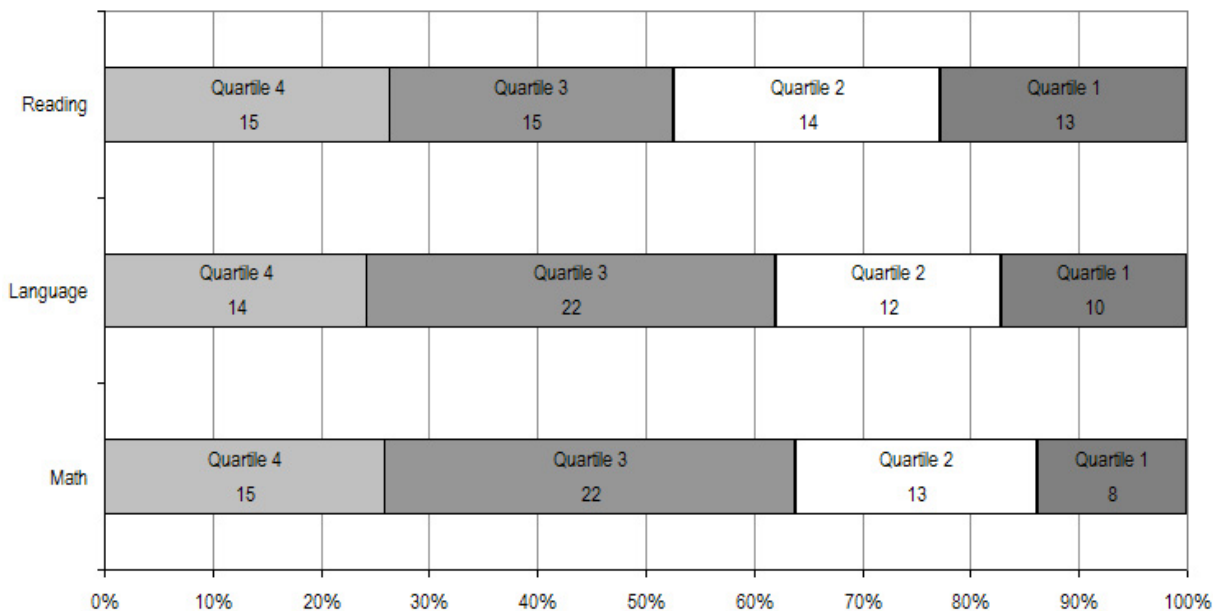


\* 2007-08 was the first year Science was administered for grades 4, 8 and 10 on the SBA.

Aurora Elementary School TerraNova Grade 5 Percent in Each Quartile								
Reading	Above Average		Average				Below Average	
	4th Quartile (76-99 percentile)		3rd Quartile (51-75 percentile)		2nd Quartile (26-50 percentile)		1st Quartile (1-25 percentile)	
	School	District	School	District	School	District	School	District
07-08	26.32%	25.65%	26.32%	24.08%	24.56%	23.73%	22.81%	26.55%
06-07	28.6%	33.1%	35.7%	26.1%	23.8%	23.6%	11.9%	17.2%
05-06	25.0%	30.4%	34.1%	26.8%	29.5%	24.5%	11.4%	18.3%
04-05	45.2%	29.2%	21.4%	27.6%	23.8%	24.5%	9.5%	18.7%
03-04	25.5%	30.6%	42.6%	26.9%	25.5%	24.2%	6.4%	18.3%
<b>Language</b>								
07-08	24.14%	26.79%	37.93%	27.20%	20.69%	24.12%	17.24%	21.89%
06-07	38.1%	34.7%	28.6%	26.9%	23.8%	21.4%	9.5%	17.0%
05-06	43.2%	34.0%	34.1%	26.5%	13.6%	22.0%	9.1%	17.5%
04-05	47.6%	32.1%	33.3%	28.3%	11.9%	21.2%	7.1%	18.4%
03-04	34.0%	34.1%	42.6%	26.5%	12.8%	21.7%	10.6%	17.7%
<b>Mathematics</b>								
07-08	25.86%	25.45%	37.93%	26.40%	22.41%	24.47%	13.79%	23.68%
06-07	23.8%	29.7%	31.0%	31.6%	33.3%	21.2%	11.9%	17.4%
05-06	27.3%	28.4%	34.1%	31.9%	29.5%	22.3%	9.1%	17.5%
04-05	23.8%	26.9%	45.2%	31.1%	16.7%	22.9%	14.3%	19.1%
03-04	21.3%	28.3%	36.2%	29.3%	27.7%	22.6%	14.9%	19.8%

The double bold line indicates a change from the TerraNova 2<sup>nd</sup> edition to the TerraNova 3<sup>rd</sup> edition.

2007-08 TerraNova 3rd Edition Grade 5 Percent and Count of Students in Each Quartile For Aurora Elementary School



## Climate Survey Results for Aurora Elementary School

The Anchorage School District administered the School Climate and Connectedness Surveys in spring 2008 to students in grades 5-12, all school staff and parents/guardians of students in grades K-12. The surveys were done to provide schools with information about perceptions and experiences related to school climate for use in setting school goals and redirecting resources. In the spring of 2008 grades 3 and 4 students were involved in a pilot survey for measuring school climate and connectedness. The results are currently under review by the American Institutes for Research.

Respondents were asked to answer a series of questions that were related to a certain concept. For each item, there were five options from which to choose a response. The answer options ranged from strongly disagree (1) to strongly agree (5).

Student Survey Response Rate - Grades 5-12 Survey			
	Aurora Elementary School	Overall Elementary Schools	District**
# Surveys Completed	101	5,579	21,629
# Reportable Surveys	92	4,969	18,654
# Students Enrolled*	105	6,331	28,945
Reportable Response Rate	87.62%	78.49%	64.45%

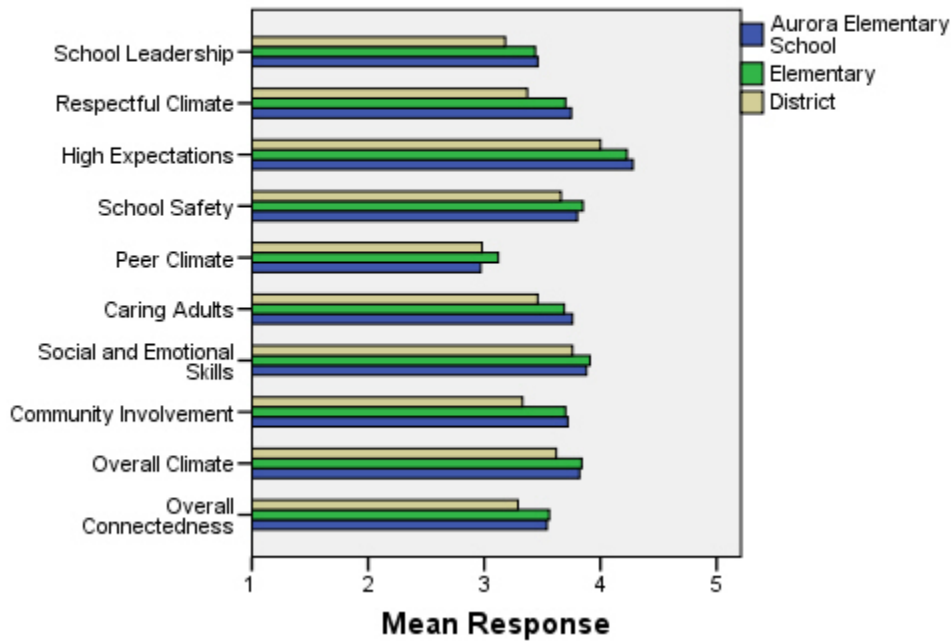
\*Number enrolled as of April 1, 2008

\*\*District data does not include KCC responses

Each question in the survey related to a factor or concept, and a score was calculated based on the mean response for the questions related to each factor. The factors measured in the survey were:

- **School Leadership and Student Involvement:** This factor reflects students' feelings about the decision making of school leaders as well as student participation in the school governance. Students selected responses between 1 and 5 where 1 indicates a low level of school leadership and student involvement and 5 indicates a high level of school leadership and student involvement.
- **Respectful Climate:** This factor reflects students' feelings about fairness of rules and respect for students' contributions. Students selected responses between 1 and 5 where 1 indicates a lack of a respectful climate and 5 indicates a highly respectful climate for students.
- **High Expectations:** This factor reflects students' feelings about their own expectations as well as those of adults in their school and community. Students selected responses between 1 and 5 where 1 indicates a lack of high expectations and 5 indicates a high level of high expectations.
- **School Safety:** This factor reflects students' feelings about bullies and gangs at school as well as general crime and violence in the community. Students selected responses between 1 and 5 where 1 indicates a low level of school safety and 5 indicates a high level of school safety.
- **Peer Climate:** This factor reflects students' feelings about how respectful students are to one another and how helpful students are to other students. Students selected responses between 1 and 5 where 1 indicates a more negative peer climate and 5 indicates a very positive peer climate at the school.
- **Caring Adults:** This factor reflects students' feelings about how close they feel to adults in the school. Students selected responses between 1 and 5 where 1 indicates a lack of caring adult relationships and 5 indicates strong caring adult relationships at the school.
- **Social and Emotional Learning:** This factor reflects students' ability to think about the consequences of their actions and to empathize with others. Students selected responses between 1 and 5 where 1 indicates that students at the school perceive themselves as having poorer social and emotional learning, and 5 indicates higher levels of social and emotional learning.
- **Community Involvement:** This factor reflects students' feelings about how supportive and welcoming the school is with parents and the community. Students selected responses between 1 and 5 where 1 indicates a less supportive and welcoming environment and 5 indicates a more supportive and welcoming environment.
- **Overall Climate:** The overall climate score was computed as the mean of three scales: school leadership, high expectations and school safety.
- **Overall Connectedness:** Overall connectedness score was computed as a mean of four scales: respectful climate, peer climate, caring adults and community involvement.

### Climate and Connectedness Student Survey - Aurora



Student Survey Mean Response by Factors Related to School Climate - Overall District			
	Aurora Elementary School	Overall Elementary Schools	District
School Leadership	3.46	3.44	3.18
Respectful Climate	3.75	3.70	3.37
High Expectations	4.28	4.23	4.00
School Safety	3.80	3.85	3.66
Peer Climate	2.97	3.12	2.98
Caring Adults	3.76	3.69	3.46
Social and Emotional Skills	3.88	3.91	3.76
Community Involvement	3.72	3.70	3.33
Overall Climate	3.82	3.84	3.62
Overall Connectedness	3.54	3.56	3.29

Range is from a low of 1 to a high of 5

Students were also asked to answer questions related to school danger. The following table provides the responses for those questions:

Student Survey Results of the School Danger Questions - Percent of Students Responding in Each Category					
	0 Times	1-2 Times	3-6 Times	7-12 Times	> 12 Times
<b>Aurora Elementary School</b>					
Under the influence of drugs?	93.41%	5.49%	0.00%	0.00%	1.10%
Under the influence of alcohol?	90.11%	8.79%	1.10%	0.00%	0.00%
Destroy things (vandalism)?	39.56%	38.46%	6.59%	4.40%	10.99%
Get into fights?	16.48%	31.87%	25.27%	10.99%	15.38%
Steal things?	43.33%	27.78%	13.33%	4.44%	11.11%
Threaten or bully?	26.37%	24.18%	19.78%	10.99%	18.68%
Under the influence of inhalants?	52.75%	26.37%	13.19%	1.10%	6.59%
Carry weapons?	83.52%	8.79%	5.49%	0.00%	2.20%
<b>Overall Elementary Schools</b>					
Under the influence of drugs?	91.87%	5.65%	1.22%	0.31%	0.96%
Under the influence of alcohol?	91.42%	6.01%	1.16%	0.51%	0.90%
Destroy things (vandalism)?	46.82%	32.08%	12.45%	3.30%	5.36%
Get into fights?	22.32%	35.75%	22.56%	7.96%	11.41%
Steal things?	49.79%	27.92%	12.01%	4.33%	5.95%
Threaten or bully?	32.34%	28.83%	17.08%	7.78%	13.97%
Under the influence of inhalants?	71.03%	17.07%	6.14%	2.63%	3.12%
Carry weapons?	79.22%	15.35%	3.17%	0.59%	1.68%
<b>District</b>					
Under the influence of drugs?	60.45%	15.05%	9.54%	3.92%	11.04%
Under the influence of alcohol?	63.11%	16.37%	8.90%	4.43%	7.19%
Destroy things (vandalism)?	41.26%	29.47%	15.45%	5.88%	7.94%
Get into fights?	26.40%	35.20%	21.96%	7.11%	9.33%
Steal things?	44.80%	25.68%	13.81%	6.98%	8.74%
Threaten or bully?	32.21%	26.21%	16.68%	9.27%	15.63%
Under the influence of inhalants?	72.79%	14.21%	5.66%	2.48%	4.87%
Carry weapons?	69.45%	19.15%	5.34%	2.01%	4.06%

Student Survey Results of the Mean Factor Score by Ethnicity (Self-Reported)							
	AKNA/AI	AF AM/Black	Hispanic	Asian/NH	White	Other	Multi-Ethnic
<b>Aurora Elementary School</b>							
School Leadership	3.90	3.60	4.10	3.60	3.36	3.77	3.10
Respectful Climate	4.00	3.43	5.00	4.83	3.67	4.17	3.86
High Expectations	4.93	4.26	4.21	4.64	4.20	4.40	4.36
School Safety	4.00	3.55	3.90	4.40	3.80	3.87	4.03
Peer Climate	2.80	3.14	3.50	3.90	2.86	2.95	2.67
Caring Adults	4.30	3.88	3.50	4.20	3.71	3.60	4.03
Social and Emotional Skills	4.57	3.87	3.83	4.07	3.78	4.06	4.16
Community Involvement	4.43	3.44	4.21	3.93	3.70	3.89	3.60
Overall Climate	4.28	3.78	4.07	4.21	3.75	4.00	3.83
Overall Connectedness	3.79	3.43	4.51	4.47	3.48	3.60	3.54
<b>Overall Elementary Schools</b>							
School Leadership	3.56	3.50	3.52	3.55	3.37	3.44	3.42
Respectful Climate	3.75	3.60	3.66	3.72	3.71	3.69	3.63
High Expectations	4.12	4.23	4.23	4.22	4.26	4.19	4.25
School Safety	3.75	3.63	3.73	3.68	4.03	3.66	3.79
Peer Climate	3.12	2.94	3.12	3.18	3.16	3.05	3.05
Caring Adults	3.64	3.73	3.64	3.59	3.74	3.60	3.76
Social and Emotional Skills	3.86	3.84	3.91	3.95	3.93	3.90	3.89
Community Involvement	3.66	3.60	3.67	3.66	3.75	3.66	3.70
Overall Climate	3.81	3.79	3.84	3.81	3.89	3.76	3.82
Overall Connectedness	3.56	3.49	3.51	3.53	3.60	3.49	3.56
<b>District</b>							
School Leadership	3.33	3.14	3.19	3.28	3.14	3.17	3.15
Respectful Climate	3.48	3.18	3.32	3.39	3.39	3.37	3.33
High Expectations	3.98	3.94	3.96	4.02	4.02	4.00	4.01
School Safety	3.60	3.48	3.55	3.47	3.78	3.51	3.62
Peer Climate	3.01	2.85	2.94	3.05	3.00	2.92	2.93
Caring Adults	3.49	3.43	3.37	3.33	3.51	3.42	3.46
Social and Emotional Skills	3.73	3.66	3.73	3.81	3.78	3.75	3.74
Community Involvement	3.37	3.22	3.31	3.29	3.34	3.34	3.31
Overall Climate	3.64	3.52	3.57	3.59	3.65	3.56	3.60
Overall Connectedness	3.33	3.17	3.24	3.26	3.31	3.26	3.27

The response rate is not high enough to provide statistically reliable results for Aurora Elementary School's Staff Survey Results.

The response rate is not high enough to provide statistically reliable results for Aurora Elementary School's Parent/Guardian Survey Results.