

### Bayshore Elementary School Overview

#### Statement of Program

Bayshore Elementary School provides a well-rounded education for children in grades K-6 in a traditional neighborhood setting. The rigorous program is focused on district and state standards. Our dedicated 90-minute literacy and math blocks help students learn in flexible groups based on regular review of performance.

Reading and math instruction is provided according to students' specific needs. We also use assessment-driven instruction in writing. Additional classes are provided in art, music and physical education that are taught by a content area specialist. PTA and staff members are dedicated to providing personal development activities for students such as, chorus, choir chimes, community service, student council, spirit days and numerous sports opportunities.

From the School Report Card

School Goals	
Goal	Level of Achievement
The number of students rated not proficient on the state language arts assessment will decrease by 10 percent, resulting in an improvement from 89.1 to 90.2 percent proficient.	Attained
The number of students rated not proficient on the state math assessment will decrease by 10 percent, resulting in an improvement from 81 to 82.9 percent proficient.	Attained

From the School Report Card

Budget*	
2006-07 Actual Expenditures	\$2,929,040
2007-08 Revised Budgeted Amount	\$3,394,581
2008-09 Proposed Budget	\$3,366,199

\*Dollars budgeted or expended are general fund only  
From IFAS

Bayshore Elementary School Characteristics			
	School	District	Source of Information
Membership	532	48,858	Fall OASIS
Capacity	106.72%	N/A	2008-18 ASD Capital Improvement Plan
Attendance Rate	94.65%	92.83%	NCLB Summer Data Collection
Retention Rate K-8	0.00%	0.60%	SMS and NCLB Summer Data Collection
Transiency Rate	11.43%	26.07%	NCLB Summer Data Collection
Economically Disadvantaged	79	17,717	Fall OASIS
Average Weekly Volunteer Hours	2	4,660	Department of Education Report Card Report
Students Taking the Alternate Assessment	0	228	SMS
Change in Enrollment	-4.83%	-0.76%	Fall Oasis

Teacher Qualification				
Number of Teachers	Percent Fully Licensed	Percent With Advanced Degrees	Number Nationally Board Certified	Percent of Classes Taught by "Highly Qualified Teachers"
37	100.00%	29.72%	0	100.00%

Bayshore Elementary School Business Partnerships	
None	

From the School Report Card

Ethnicity Report							
African-American/Black	Alaska Native/American Indian	Asian	Native Hawaiian/Other Pacific Islander	White	Hispanic	Multi-Ethnic	Total
14	19	76	6	300	54	63	532

From Fall Oasis

Full Academic Year		
Students Enrolled	Students Enrolled for FAY	Percent FAY
530	513	96.79%

From participation file (Grades 3-10)

**Bayshore Elementary School  
2007-08 Adequate Yearly Progress  
Status Report**

Meets AYP

AMO For Language Arts: 77.18%  
AMO For Mathematics: 66.09%

Group	Participation Rate				"FAY" (D) Tested & Enrolled "FAY"	Language Arts Performance				Mathematics Performance			
	(A) Number Enrolled	(B) Number Tested	Participation Rate (%)	(C) Participation Rate Met		(E) Proficient on LA	(F) Percent Proficient on LA	(G) LA Target	(H) Met AMO for LA	(I) Proficient on Mathematics	(J) Percent Proficient in Mathematics	(K) Mathematics Target	(L) Met AMO for Mathematics
All Students	289	288	99.7%	Yes	281	255	90.7%	71.3%	Yes	254	90.4%	59.5%	Yes
AF AM	6	6	N/A	N/A	N/A	N/A	N/A	N/A	N/A	N/A	N/A	N/A	N/A
AKNA/AI	7	7	N/A	N/A	N/A	N/A	N/A	N/A	N/A	N/A	N/A	N/A	N/A
Asian/NH/OPI	38	38	100%	Yes	37	33	89.2%	61.1%	Yes	34	91.9%	48%	Yes
White	177	177	100%	Yes	173	157	90.8%	69.7%	Yes	155	89.6%	57.7%	Yes
Hispanic	32	31	96.9%	Yes	31	28	90.3%	59.6%	Yes	28	90.3%	46.3%	Yes
ME	29	29	100%	Yes	29	***	≥90%	59%	Yes	***	≥90%	45.6%	Yes
EDS	40	39	97.5%	Yes	36	29	80.6%	60.9%	Yes	30	83.3%	47.7%	Yes
SWD	51	51	100%	Yes	51	36	70.6%	63.5%	Yes	34	66.7%	50.6%	Yes
LEP	39	39	100%	Yes	37	33	89.2%	61.1%	Yes	33	89.2%	48%	Yes

Attendance Rate: Met

94.6% (Threshold is 85%)

N/A is used to indicate:

(1) Subgroups with 20 or fewer students enrolled on the first day of testing shall not be included in participation rate calculation.

(2) Subgroups with 25 or fewer students enrolled for the "full academic year" shall not have the performance score computed.

\* For the groups where the number enrolled is less than or equal to 40, participation is met when no more than two miss the test. Groups can also meet this target using the average of the past two or three years.

\*\* When a group achieves a "Yes" without meeting the listed target, it has done so using either the 99% confidence interval or Safe Harbor.

\*\*\* The results cannot be published without releasing personally identifiable information based upon the EED reporting protocol.

This document was prepared by the ASD Assessment and Evaluation Department.

7/10/2008

Bayshore Elementary School  
2007-08 Adequate Yearly Progress  
Growth Report

The AYP growth reports are generated by the Alaska State Department of Education and Early Development. The reports can be found online at: [http://www.asdk12.org/depts/assess\\_eval/AYP/State\\_AS\\_D\\_AYG\\_0708.pdf](http://www.asdk12.org/depts/assess_eval/AYP/State_AS_D_AYG_0708.pdf)

SBA Proficiency Comparison by Grade for Bayshore Elementary School																
	Reading Percent Proficient				Writing Percent Proficient				Mathematics Percent Proficient				Science* Percent Proficient			
	04-05	05-06	06-07	07-08	04-05	05-06	06-07	07-08	04-05	05-06	06-07	07-08	04-05	05-06	06-07	07-08
All Students	90.03%	88.55%	90.29%	91.64%	86.40%	87.43%	85.88%	89.93%	80.56%	79.94%	81.12%	90.28%	N/A	N/A	N/A	68.42%
Grade 3	81.01%	93.06%	90.48%	93.65%	81.25%	86.11%	91.67%	92.06%	81.25%	83.33%	89.29%	95.24%	N/A	N/A	N/A	N/A
Grade 4	92.55%	88.37%	92.11%	89.47%	85.42%	87.50%	85.53%	93.42%	80.21%	85.23%	78.67%	92.11%	N/A	N/A	N/A	68.42%
Grade 5	93.98%	84.62%	89.89%	92.42%	90.24%	85.71%	84.27%	88.06%	76.83%	74.73%	78.65%	91.04%	N/A	N/A	N/A	N/A
Grade 6	91.58%	89.16%	89.01%	91.46%	88.42%	90.36%	82.42%	86.59%	83.51%	77.11%	78.02%	84.15%	N/A	N/A	N/A	N/A

\* 2007-08 was the first year Science was administered for grades 4, 8 and 10 on the SBA.

SBA Proficient & Not Proficient by NCLB Groups for Bayshore Elementary School								
	Reading		Writing		Mathematics		Science**	
	Percent Proficient	Percent Not Proficient	Percent Proficient	Percent Not Proficient	Percent Proficient	Percent Not Proficient	Percent Proficient	Percent Not Proficient
All Students	91.64%	8.36%	89.93%	10.07%	90.28%	9.72%	68.42%	31.58%
AF AM	60% or more	40% or fewer	60% or more	40% or fewer	60% or more	40% or fewer	*	*
AKNA/AI	60% or more	40% or fewer	60% or more	40% or fewer	60% or more	40% or fewer	*	*
Asian	90.91%	9.09%	90.91%	9.09%	90.91%	9.09%	44.44%	55.56%
NH/OPI	60% or more	40% or fewer	60% or more	40% or fewer	60% or more	40% or fewer	*	*
White	92.05%	7.95%	89.83%	10.17%	89.27%	10.73%	76.09%	23.91%
Hispanic	80.65%	19.35%	90.32%	9.68%	90.32%	9.68%	60.00%	40.00%
ME	90% or more	10% or fewer	89.66%	10.34%	90% or more	10% or fewer	*	*
EDS	82.05%	17.95%	84.62%	15.38%	82.05%	17.95%	60% or fewer	40% or more
Non-EDS	93.15%	6.85%	90.76%	9.24%	91.57%	8.43%	72.46%	27.54%
SWD	64.71%	35.29%	70.59%	29.41%	64.71%	35.29%	42.86%	57.14%
Non-SWD	95.26%	4.74%	92.52%	7.48%	93.70%	6.30%	74.19%	25.81%
LEP	50.00%	50.00%	60.00%	40.00%	60.00%	40.00%	*	*
Not LEP	93.14%	6.86%	91.01%	8.99%	91.37%	8.63%	70.83%	29.17%
Migrant	80% or more	20% or fewer	80% or more	20% or fewer	80% or more	20% or fewer	*	*
Not Migrant	91.61%	8.39%	89.82%	10.18%	89.82%	10.18%	68.00%	32.00%
Female	93.66%	6.34%	93.66%	6.34%	93.66%	6.34%	62.50%	37.50%
Male	89.66%	10.34%	86.30%	13.70%	86.99%	13.01%	75.00%	25.00%

\* Results cannot be published without releasing personally identifiable information based upon the EED reporting protocol

\*\* 2007-08 was the first year Science was administered for grades 4, 8 and 10 on the SBA.

SBA Mean Scale Score Comparison by NCLB Groups for Bayshore Elementary School								
	Reading		Writing		Mathematics		Science***	
	06-07	07-08	06-07	07-08	06-07	07-08	06-07	07-08
All Students	400.87	409.30	407.12	411.56	383.13	398.35	N/A	339.07
AF AM	374.21	427.33	361.64	417.50	336.79	384.17	N/A	*
AKNA/AI	375.82	370.00	393.29	378.57	360.82	352.29	N/A	*
Asian**	398.77	393.76	401.14	407.00	398.40	411.64	N/A	296.89
NH/OPI**	N/A	383.20	N/A	397.00	N/A	396.20	N/A	*
White	407.18	418.19	415.56	416.10	385.65	402.40	N/A	348.20
Hispanic	351.06	395.74	351.41	407.61	335.88	378.81	N/A	334.70
ME	413.11	397.79	414.64	402.45	405.36	393.90	N/A	*
EDS	357.08	375.36	356.92	372.41	340.57	361.74	N/A	269.00
Non-EDS	408.07	414.64	415.37	417.69	389.98	404.09	N/A	346.17
SWD	340.08	340.06	334.44	337.03	311.90	342.26	N/A	283.79
Non-SWD	411.36	418.61	419.65	421.53	395.46	405.86	N/A	351.55
LEP	358.16	335.10	358.30	334.20	353.98	338.90	N/A	*
Not LEP	407.22	411.98	414.38	414.34	387.48	400.49	N/A	344.88
Migrant	381.67	402.23	377.50	385.85	378.67	393.69	N/A	*
Not Migrant	401.22	409.64	407.65	412.77	383.21	398.57	N/A	339.44
Female	413.17	424.44	429.91	434.98	388.73	400.27	N/A	322.70
Male	389.68	394.48	386.37	388.77	378.07	396.49	N/A	357.25

\* Results cannot be published without releasing personally identifiable information based upon the EED reporting protocol

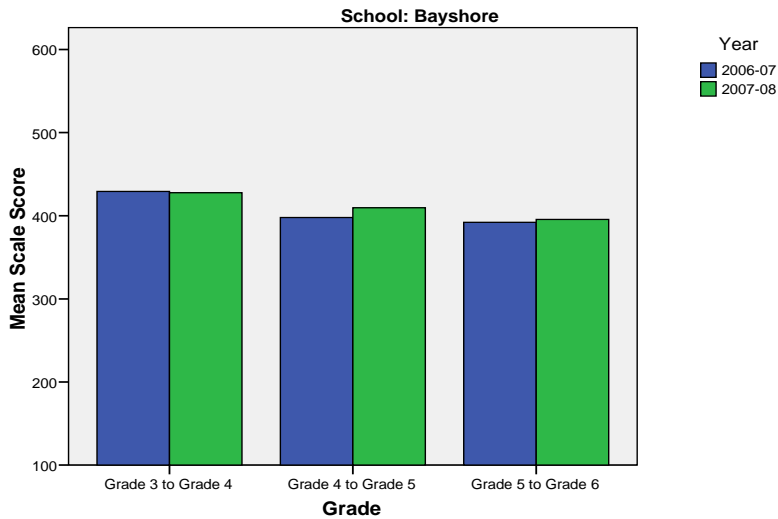
\*\* Prior to 2007-08 the Asian category includes Native Hawaiian/Other Pacific Islander. In 2007-08 Native Hawaiian/Other Pacific Islander is a separate ethnic category.

\*\*\* 2007-08 was the first year Science was administered for grades 4, 8 and 10 on the SBA.

Bayshore Elementary School SBA Change Average Scale Score by NCLB Groups: Reading									
	Average Scale Score of Students Tested in District Both Years			Average Scale Score of Students Tested in District Both Years			Average Scale Score of Students Tested in District Both Years		
	Grade 3 in 06-07	Grade 4 in 07-08	Difference	Grade 4-in 06-07	Grade 5 in 07-08	Difference	Grade 5-in 06-07	Grade 6 in 07-08	Difference
All Students	429.20	427.61	-1.59	397.89	409.67	11.78	392.05	395.49	3.43
AF AM	*	*	*	*	*	*	*	*	*
AKNA/AI	*	*	*	*	*	*	*	*	*
Asian	390.89	380.33	-10.56	419.67	411.00	-8.67	370.78	387.11	16.33
NH/OPI	*	*	*	*	*	*	*	*	*
White	447.07	447.80	0.73	406.93	418.89	11.96	393.90	396.94	3.04
Hispanic	386.00	378.60	-7.40	352.83	382.50	29.67	430.67	410.89	-19.78
ME	*	*	*	*	*	*	379.29	385.86	6.57
EDS	351.40	354.20	2.80	332.67	351.00	18.33	380.56	383.22	2.67
Non-EDS	435.18	433.26	-1.92	408.76	419.44	10.69	393.60	397.13	3.54
SWD	353.54	347.62	-5.92	303.00	327.00	24.00	337.60	301.00	-36.60
Non-SWD	446.46	445.86	-0.60	407.88	418.37	10.49	395.89	402.14	6.25
LEP	*	*	*	*	*	*	*	*	*
Not LEP	435.79	434.52	-1.27	397.89	409.67	11.78	393.67	396.84	3.17
Migrant	*	*	*	*	*	*	*	*	*
Not Migrant	429.75	427.03	-2.72	400.62	410.87	10.25	392.56	394.19	1.63
Female	437.56	430.69	-6.86	396.14	406.59	10.45	420.38	420.97	0.59
Male	420.35	424.35	4.00	399.38	412.29	12.91	365.18	371.31	6.13

\* Results cannot be published without releasing personally identifiable information based upon the EED reporting protocol

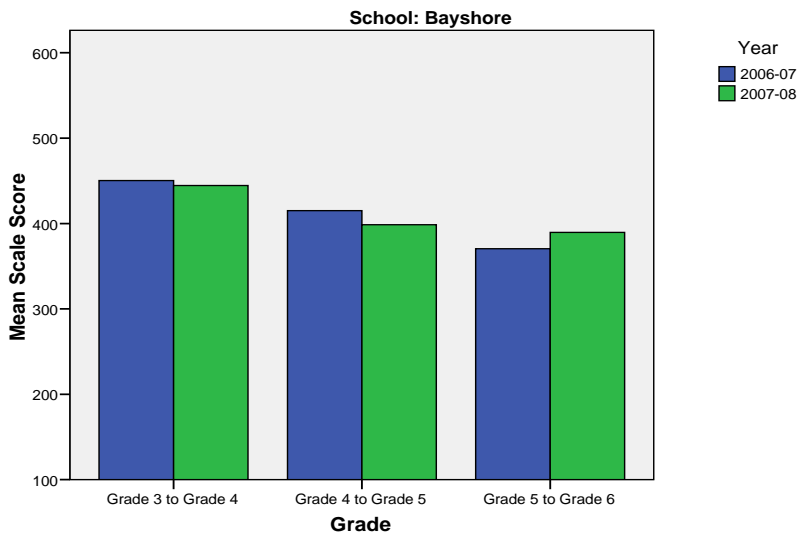
**Change in Mean Scale Score in SBA Reading by Grade Between 2006-07 and 2007-08**



Bayshore Elementary School SBA Change Average Scale Score by NCLB Groups: Writing									
	Average Scale Score of Students Tested in District Both Years			Average Scale Score of Students Tested in District Both Years			Average Scale Score of Students Tested in District Both Years		
	Grade 3 in 06-07	Grade 4 in 07-08	Difference	Grade 4- in 06-07	Grade 5 in 07-08	Difference	Grade 5- in 06-07	Grade 6 in 07-08	Difference
All Students	450.23	444.59	-5.64	415.06	398.63	-16.44	370.57	389.57	19.00
AF AM	*	*	*	*	*	*	*	*	*
AKNA/AI	*	*	*	*	*	*	*	*	*
Asian	415.67	410.22	-5.44	417.00	427.17	10.17	369.78	401.11	31.33
NH/OPI	*	*	*	*	*	*	*	*	*
White	465.51	454.49	-11.02	430.02	401.68	-28.34	369.06	392.58	23.52
Hispanic	405.10	425.90	20.80	353.00	371.67	18.67	404.44	399.67	-4.78
ME	*	*	*	*	*	*	352.43	367.29	14.86
EDS	368.20	382.60	14.40	335.33	343.11	7.78	346.00	351.00	5.00
Non-EDS	456.54	449.35	-7.18	428.11	407.71	-20.40	373.87	394.75	20.88
SWD	366.08	363.77	-2.31	280.67	313.33	32.67	304.80	261.80	-43.00
Non-SWD	469.42	463.02	-6.40	428.97	407.45	-21.52	375.20	398.56	23.37
LEP	*	*	*	*	*	*	*	*	*
Not LEP	456.76	452.24	-4.52	415.06	398.63	-16.44	372.41	390.93	18.52
Migrant	*	*	*	*	*	*	*	*	*
Not Migrant	450.39	445.19	-5.20	417.56	400.61	-16.95	371.12	390.00	18.88
Female	469.75	452.42	-17.33	423.41	396.10	-27.31	391.41	428.00	36.59
Male	429.56	436.29	6.74	408.14	400.71	-7.43	350.79	353.10	2.31

\* Results cannot be published without releasing personally identifiable information based upon the EED reporting protocol

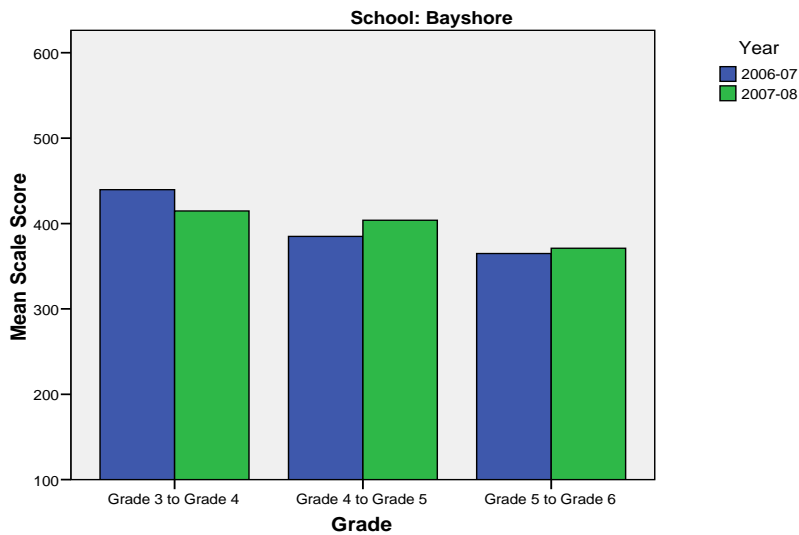
**Change in Mean Scale Score in SBA Writing by Grade between 2006-07 and 2007-08**



Bayshore Elementary School SBA Change Average Scale Score by NCLB Groups: Mathematics									
	Average Scale Score of Students Tested in District Both Years			Average Scale Score of Students Tested in District Both Years			Average Scale Score of Students Tested in District Both Years		
	Grade 3 in 06-07	Grade 4 in 07-08	Difference	Grade 4- in 06-07	Grade 5 in 07-08	Difference	Grade 5- in 06-07	Grade 6 in 07-08	Difference
All Students	439.70	414.73	-24.97	384.94	403.89	18.95	364.82	371.03	6.21
AF AM	*	*	*	*	*	*	*	*	*
AKNA/AI	*	*	*	*	*	*	*	*	*
Asian	424.56	405.78	-18.78	404.67	452.67	48.00	401.89	399.22	-2.67
NH/OPI	*	*	*	*	*	*	*	*	*
White	454.07	420.24	-33.83	389.96	406.80	16.85	360.98	375.23	14.25
Hispanic	384.10	383.00	-1.10	345.83	373.33	27.50	391.78	362.67	-29.11
ME	*	*	*	*	*	*	330.57	332.86	2.29
EDS	332.80	341.80	9.00	324.50	365.75	41.25	342.56	343.56	1.00
Non-EDS	447.92	420.34	-27.58	393.73	409.44	15.71	367.81	374.72	6.91
SWD	349.15	348.23	-0.92	251.17	300.50	49.33	291.60	258.80	-32.80
Non-SWD	460.35	429.89	-30.46	399.02	414.77	15.75	369.97	378.93	8.96
LEP	*	*	*	*	*	*	*	*	*
Not LEP	446.70	419.35	-27.35	384.94	403.89	18.95	366.04	372.35	6.31
Migrant	*	*	*	*	*	*	*	*	*
Not Migrant	440.22	414.78	-25.43	385.48	404.25	18.77	365.38	370.77	5.38
Female	436.53	399.67	-36.86	375.96	386.29	10.32	367.54	380.57	13.03
Male	443.06	430.68	-12.38	392.11	417.97	25.86	362.23	361.97	-0.26

\* Results cannot be published without releasing personally identifiable information based upon the EED reporting protocol

**Change in Mean Scale Score in SBA Mathematics by Grade between 2006-07 and 2007-08**



Reading: SBA Results Compared for Bayshore Elementary School, District and State Grades 3 Through 6															
	% Advanced Proficient			% Proficient			% Below Proficient			% Far Below Proficient			% Tested		
	School	District	State	School	District	State	School	District	State	School	District	State	School	District	State
All Students	49.13%	39.70%	35.67%	42.51%	43.89%	45.50%	5.92%	11.60%	13.02%	2.44%	4.80%	5.80%	99.31%	98.15%	97.98%
AF AM	50.00%	20.73%	22.99%	50.00%	54.18%	53.49%	*	17.79%	16.46%	*	7.30%	7.06%	100.00%	98.04%	97.49%
AKNA/AI	*	20.23%	14.62%	100.00%	51.11%	48.17%	*	18.54%	24.83%	*	10.11%	12.37%	100.00%	96.88%	97.59%
Asian	39.39%	30.22%	28.26%	51.52%	48.71%	51.04%	*	15.32%	15.32%	*	5.75%	5.38%	100.00%	97.64%	97.67%
NH/OPI	*	14.67%	N/A	80.00%	51.03%	N/A	*	24.59%	N/A	*	9.71%	N/A	100.00%	98.98%	N/A
White	54.55%	52.75%	47.28%	37.50%	38.06%	42.41%	5.68%	6.69%	7.27%	2.27%	2.50%	3.03%	99.44%	98.68%	98.28%
Hispanic	51.61%	32.35%	31.74%	29.03%	46.43%	48.60%	*	14.67%	13.66%	*	6.55%	6.00%	96.88%	97.14%	97.32%
ME	41.38%	33.26%	34.76%	55.17%	48.25%	47.75%	*	13.47%	12.80%	*	5.01%	4.70%	100.00%	98.15%	98.03%
EDS	33.33%	22.85%	21.47%	48.72%	49.71%	48.65%	*	19.04%	20.31%	*	8.40%	9.57%	97.50%	97.50%	96.44%
Not EDS	51.61%	51.44%	46.31%	41.53%	39.84%	43.15%	4.84%	6.42%	7.56%	2.02%	2.30%	2.98%	99.60%	98.61%	99.16%
SWD	20.59%	10.08%	9.29%	44.12%	37.10%	37.96%	20.59%	32.15%	31.20%	14.71%	20.67%	21.55%	100.00%	94.28%	93.60%
Non-SWD	52.96%	45.02%	40.09%	42.29%	45.12%	46.77%	*	7.91%	9.98%	*	1.95%	3.17%	99.22%	98.88%	98.75%
LEP	*	4.97%	3.12%	30.00%	39.93%	38.06%	30.00%	37.14%	38.40%	*	17.96%	20.42%	100.00%	94.25%	96.11%
Not LEP	50.18%	42.78%	39.95%	42.96%	44.25%	46.48%	5.05%	9.33%	9.68%	1.81%	3.64%	3.88%	99.28%	98.51%	98.23%
Migrant	46.15%	27.01%	17.29%	46.15%	50.34%	48.58%	*	16.44%	23.78%	*	6.21%	10.35%	100.00%	98.35%	98.50%
Not Migrant	49.27%	40.26%	36.97%	42.34%	43.61%	45.29%	5.84%	11.38%	12.26%	2.55%	4.74%	5.48%	99.28%	98.14%	97.94%
Female	58.45%	44.40%	39.45%	35.21%	43.41%	45.33%	*	8.75%	10.85%	*	3.44%	4.37%	100.00%	98.39%	98.31%
Male	40.00%	35.15%	32.09%	49.66%	44.37%	45.67%	6.90%	14.36%	15.08%	3.45%	6.13%	7.16%	98.64%	97.92%	97.66%

\* Results cannot be published without releasing personally identifiable information based upon the EED reporting protocol

Writing: SBA Results Compared for Bayshore Elementary School, District and State Grades 3 Through 6															
	% Advanced Proficient			% Proficient			% Below Proficient			% Far Below Proficient			% Tested		
	School	District	State	School	District	State	School	District	State	School	District	State	School	District	State
All Students	53.47%	34.87%	30.49%	36.46%	44.25%	44.50%	*	18.78%	22.32%	*	2.10%	2.69%	99.65%	98.11%	97.96%
AF AM	66.67%	20.71%	20.51%	*	46.71%	48.68%	*	28.71%	27.18%	*	3.88%	3.63%	100.00%	98.15%	97.71%
AKNA/AI	*	17.15%	12.11%	57.14%	45.31%	41.05%	*	33.38%	40.69%	*	4.15%	6.15%	100.00%	96.51%	97.64%
Asian	54.55%	30.17%	28.49%	36.36%	45.92%	45.93%	*	21.33%	23.31%	*	2.58%	2.27%	100.00%	97.56%	97.67%
NH/OPI	*	14.02%	N/A	*	42.89%	N/A	*	39.38%	N/A	*	3.71%	N/A	100.00%	99.18%	N/A
White	55.93%	45.85%	40.04%	33.90%	41.91%	44.71%	*	11.26%	13.97%	*	0.99%	1.28%	100.00%	98.66%	98.22%
Hispanic	51.61%	27.33%	27.00%	38.71%	47.25%	48.36%	*	22.54%	22.23%	*	2.88%	2.41%	96.88%	97.07%	97.36%
ME	44.83%	28.51%	29.14%	44.83%	47.68%	47.29%	*	21.31%	21.37%	*	2.51%	2.20%	100.00%	98.15%	97.96%
EDS	38.46%	18.92%	17.53%	46.15%	47.34%	45.15%	*	29.95%	32.95%	*	3.79%	4.37%	97.50%	97.50%	96.53%
Not EDS	55.82%	45.99%	40.21%	34.94%	42.10%	44.01%	*	10.99%	14.35%	*	0.92%	1.44%	100.00%	98.54%	99.06%
SWD	17.65%	7.09%	6.94%	52.94%	38.82%	37.02%	*	45.96%	47.34%	*	8.12%	8.69%	100.00%	94.28%	93.97%
Non-SWD	58.27%	39.86%	34.45%	34.25%	45.23%	45.76%	*	13.89%	18.11%	*	1.02%	1.69%	99.61%	98.83%	98.66%
LEP	*	4.71%	3.14%	40.00%	37.05%	30.66%	40.00%	50.57%	56.76%	*	7.67%	9.44%	100.00%	94.25%	96.18%
Not LEP	54.68%	37.55%	34.08%	36.33%	44.89%	46.32%	*	15.96%	17.79%	*	1.60%	1.81%	99.64%	98.47%	98.20%
Migrant	46.15%	21.44%	14.20%	46.15%	48.58%	42.55%	*	26.63%	38.57%	*	3.35%	4.68%	100.00%	98.51%	98.58%
Not Migrant	53.82%	35.46%	31.63%	36.00%	44.06%	44.64%	*	18.43%	21.18%	*	2.04%	2.55%	99.64%	98.09%	97.92%
Female	65.49%	42.63%	37.48%	28.17%	42.50%	43.42%	*	13.62%	17.40%	*	1.26%	1.70%	100.00%	98.32%	98.22%
Male	41.78%	27.36%	23.87%	44.52%	45.96%	45.52%	*	23.78%	26.98%	*	2.91%	3.63%	99.32%	97.90%	97.72%

\* Results cannot be published without releasing personally identifiable information based upon the EED reporting protocol

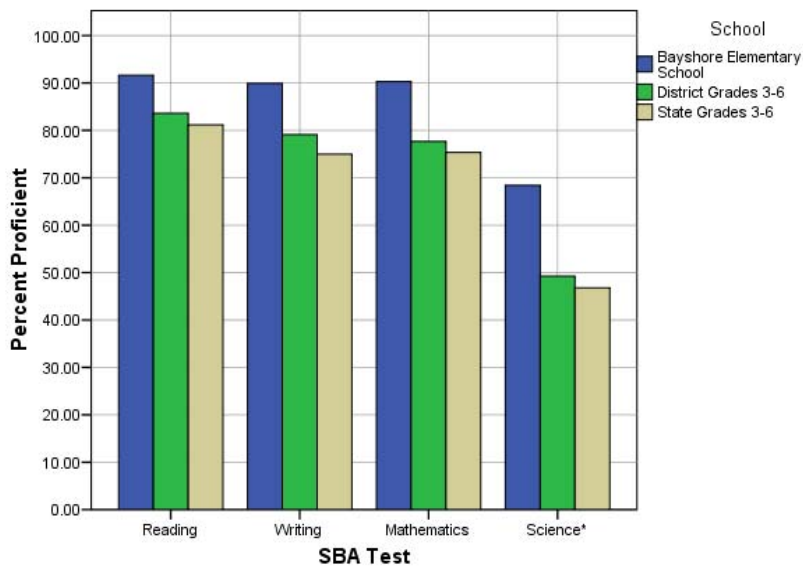
Mathematics: SBA Results Compared for Bayshore Elementary School, District and State Grades 3 Through 6															
	% Advanced Proficient			% Proficient			% Below Proficient			% Far Below Proficient			% Tested		
	School	District	State	School	District	State	School	District	State	School	District	State	School	District	State
All Students	60.07%	39.81%	36.08%	30.21%	37.84%	39.26%	5.56%	12.46%	13.78%	4.17%	9.88%	10.88%	99.65%	98.52%	98.12%
AF AM	50.00%	19.48%	22.09%	*	40.14%	41.60%	*	20.19%	18.61%	*	20.19%	17.70%	100.00%	98.38%	97.78%
AKNA/AI	*	23.20%	18.26%	85.71%	39.51%	39.14%	*	19.22%	21.79%	*	18.07%	20.81%	100.00%	96.96%	97.72%
Asian	69.70%	37.02%	34.29%	21.21%	41.20%	41.23%	*	13.76%	14.10%	*	8.03%	10.38%	100.00%	99.27%	98.99%
NH/OPI	*	18.52%	N/A	60.00%	38.07%	N/A	*	20.16%	N/A	*	23.25%	N/A	100.00%	99.39%	N/A
White	64.41%	51.12%	45.75%	24.86%	35.15%	38.35%	5.65%	8.41%	9.81%	5.08%	5.32%	6.09%	100.00%	98.69%	98.17%
Hispanic	51.61%	31.85%	31.11%	38.71%	40.04%	42.19%	*	15.02%	15.10%	*	13.09%	11.60%	96.88%	98.66%	98.47%
ME	48.28%	33.75%	35.45%	44.83%	41.21%	40.61%	*	13.93%	13.30%	*	11.11%	10.64%	100.00%	98.26%	98.00%
EDS	33.33%	24.26%	23.31%	48.72%	41.50%	40.98%	*	17.54%	18.60%	*	16.70%	17.11%	97.50%	98.14%	96.77%
Not EDS	64.26%	50.70%	45.67%	27.31%	35.28%	37.96%	4.02%	8.91%	10.16%	4.42%	5.12%	6.21%	100.00%	98.79%	99.16%
SWD	23.53%	12.52%	12.06%	41.18%	31.53%	32.14%	14.71%	23.68%	23.60%	20.59%	32.27%	32.20%	100.00%	94.19%	93.99%
Non-SWD	64.96%	44.69%	40.12%	28.74%	38.97%	40.45%	4.33%	10.46%	12.13%	1.97%	5.88%	7.30%	99.61%	99.34%	98.85%
LEP	40.00%	8.22%	6.05%	*	36.74%	34.10%	*	24.50%	27.43%	*	30.54%	32.42%	100.00%	97.95%	97.56%
Not LEP	60.79%	42.73%	40.09%	30.58%	37.94%	39.95%	5.04%	11.35%	11.96%	3.60%	7.98%	8.01%	99.64%	98.57%	98.19%
Migrant	53.85%	30.94%	22.37%	46.15%	43.65%	40.27%	*	14.21%	20.36%	*	11.20%	17.00%	100.00%	98.68%	98.54%
Not Migrant	60.36%	40.21%	37.05%	29.45%	37.58%	39.19%	5.82%	12.38%	13.31%	4.36%	9.83%	10.45%	99.64%	98.51%	98.09%
Female	64.79%	41.01%	36.83%	28.87%	38.32%	39.88%	3.52%	11.59%	13.34%	2.82%	9.09%	9.96%	100.00%	98.71%	98.31%
Male	55.48%	38.66%	35.38%	31.51%	37.38%	38.67%	7.53%	13.30%	14.20%	5.48%	10.66%	11.75%	99.32%	98.34%	97.94%

\* Results cannot be published without releasing personally identifiable information based upon the EED reporting protocol

Science: SBA Results Compared for Bayshore Elementary School, District and State Grade 4															
	% Advanced Proficient			% Proficient			% Below Proficient			% Far Below Proficient			% Tested		
	School	District	State	School	District	State	School	District	State	School	District	State	School	District	State
All Students	42.11%	23.68%	22.1%	26.32%	25.57%	24.7%	21.05%	31.70%	31.3%	10.53%	19.06%	21.9%	100.00%	97.81%	95.35%
AF AM	*	9.18%	8.9%	*	18.84%	23.3%	*	39.13%	38.0%	*	32.85%	29.8%	100.00%	98.57%	94.49%
AKNA/AI	*	6.54%	6.8%	*	21.50%	14.2%	*	42.99%	35.2%	*	28.97%	43.8%	100.00%	96.40%	94.98%
Asian	*	10.18%	13.4%	33.33%	21.40%	19.4%	44.44%	39.30%	37.5%	*	29.12%	29.7%	100.00%	98.28%	97.39%
NH/OPI	*	6.57%	N/A	*	8.03%	N/A	*	34.31%	N/A	*	51.09%	N/A	100.00%	98.56%	N/A
White	50.00%	36.40%	32.3%	26.09%	29.08%	29.9%	13.04%	25.33%	27.3%	10.87%	9.19%	10.5%	100.00%	97.87%	94.97%
Hispanic	30.00%	16.17%	18.2%	30.00%	26.15%	26.0%	*	32.08%	33.9%	*	25.61%	21.9%	100.00%	97.12%	96.39%
ME	*	16.06%	18.5%	*	26.12%	26.8%	*	37.47%	35.9%	*	20.34%	18.7%	100.00%	98.32%	96.90%
EDS	*	8.34%	11.0%	*	22.44%	20.1%	42.86%	38.10%	34.7%	*	31.12%	34.2%	100.00%	97.73%	94.99%
Not EDS	46.38%	35.00%	31.2%	26.09%	27.88%	28.5%	18.84%	26.97%	28.5%	8.70%	10.15%	11.9%	100.00%	97.87%	95.64%
SWD	21.43%	8.38%	7.7%	21.43%	16.38%	15.2%	28.57%	36.57%	36.6%	28.57%	38.67%	40.5%	100.00%	93.25%	91.70%
Non-SWD	46.77%	26.43%	24.7%	27.42%	27.22%	26.4%	19.35%	30.82%	30.4%	6.45%	15.53%	18.5%	100.00%	98.68%	96.04%
LEP	*	2.00%	1.5%	*	5.14%	3.8%	*	34.00%	28.3%	*	58.86%	66.5%	100.00%	96.15%	95.67%
Not LEP	44.44%	26.13%	25.2%	26.39%	27.88%	27.9%	20.83%	31.44%	31.8%	8.33%	14.55%	15.1%	100.00%	98.00%	95.30%
Migrant	*	9.70%	9.0%	*	26.87%	15.3%	*	39.55%	34.3%	*	23.88%	41.4%	100.00%	97.10%	97.32%
Not Migrant	42.67%	24.24%	23.0%	25.33%	25.51%	25.3%	21.33%	31.38%	31.1%	10.67%	18.86%	20.5%	100.00%	97.84%	95.21%
Female	37.50%	22.73%	20.8%	25.00%	25.78%	25.2%	20.00%	33.63%	32.6%	17.50%	17.87%	21.4%	100.00%	98.05%	95.43%
Male	47.22%	24.61%	23.4%	27.78%	25.36%	24.2%	*	29.80%	30.1%	*	20.23%	22.3%	100.00%	97.58%	95.27%

\* Results cannot be published without releasing personally identifiable information based upon the EED reporting protocol

2007-08 SBA Results Compared for Bayshore Elementary School, District and State

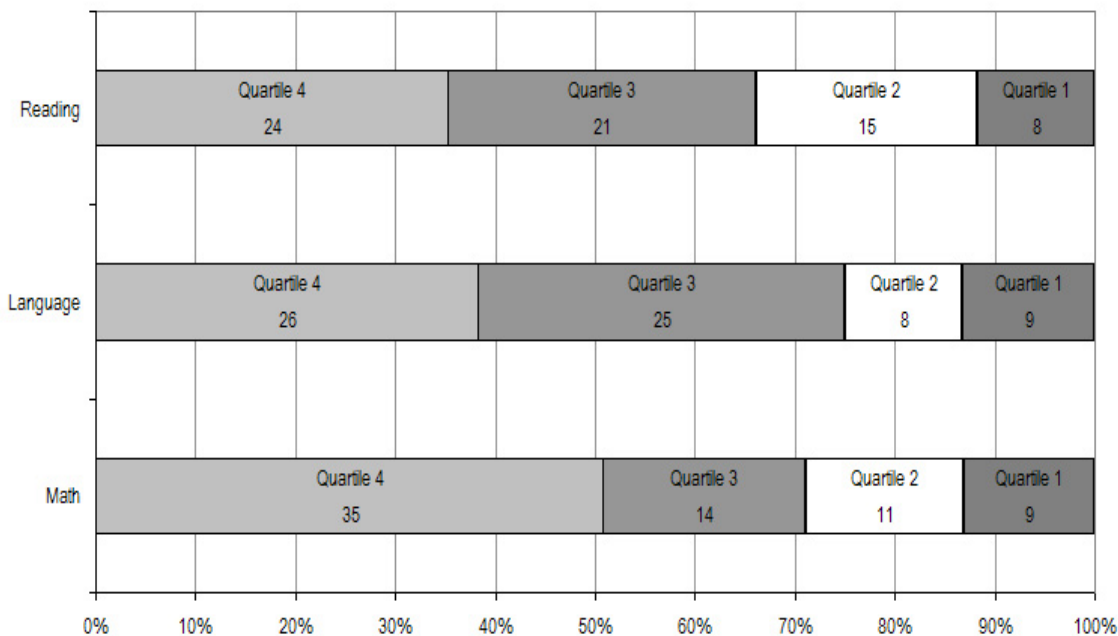


\* 2007-08 was the first year Science was administered for grades 4, 8 and 10 on the SBA.

Bayshore Elementary School TerraNova Grade 5 Percent in Each Quartile								
Reading	Above Average		Average				Below Average	
	4th Quartile (76-99 percentile)		3rd Quartile (51-75 percentile)		2nd Quartile (26-50 percentile)		1st Quartile (1-25 percentile)	
	School	District	School	District	School	District	School	District
07-08	35.29%	25.65%	30.88%	24.08%	22.06%	23.73%	11.76%	26.55%
06-07	35.6%	33.1%	27.6%	26.1%	24.1%	23.6%	12.6%	17.2%
05-06	37.0%	30.4%	32.6%	26.8%	18.5%	24.5%	12.0%	18.3%
04-05	15.9%	29.2%	43.9%	27.6%	30.5%	24.5%	9.8%	18.7%
03-04	40.4%	30.6%	25.8%	26.9%	20.2%	24.2%	13.5%	18.3%
<b>Language</b>								
07-08	38.24%	26.79%	36.76%	27.20%	11.76%	24.12%	13.24%	21.89%
06-07	40.2%	34.7%	26.4%	26.9%	24.1%	21.4%	9.2%	17.0%
05-06	40.2%	34.0%	31.5%	26.5%	18.5%	22.0%	9.8%	17.5%
04-05	32.9%	32.1%	35.4%	28.3%	25.6%	21.2%	6.1%	18.4%
03-04	44.9%	34.1%	30.3%	26.5%	14.6%	21.7%	10.1%	17.7%
<b>Mathematics</b>								
07-08	50.72%	25.45%	20.29%	26.40%	15.94%	24.47%	13.04%	23.68%
06-07	28.7%	29.7%	43.7%	31.6%	11.5%	21.2%	16.1%	17.4%
05-06	31.5%	28.4%	38.0%	31.9%	20.7%	22.3%	9.8%	17.5%
04-05	24.4%	26.9%	40.2%	31.1%	23.2%	22.9%	12.2%	19.1%
03-04	36.0%	28.3%	37.1%	29.3%	18.0%	22.6%	9.0%	19.8%

The double bold line indicates a change from the TerraNova 2<sup>nd</sup> edition to the TerraNova 3<sup>rd</sup> edition.

2007-08 TerraNova 3rd Edition Grade 5 Percent and Count of Students in Each Quartile For Bayshore Elementary School



**Climate Survey Results for Bayshore Elementary School**

The Anchorage School District administered the School Climate and Connectedness Surveys in spring 2008 to students in grades 5-12, all school staff and parents/guardians of students in grades K-12. The surveys were done to provide schools with information about perceptions and experiences related to school climate for use in setting school goals and redirecting resources. In the spring of 2008 grades 3 and 4 students were involved in a pilot survey for measuring school climate and connectedness. The results are currently under review by the American Institutes for Research.

Respondents were asked to answer a series of questions that were related to a certain concept. For each item, there were five options from which to choose a response. The answer options ranged from strongly disagree (1) to strongly agree (5).

Student Survey Response Rate – Grades 5-12			
	Bayshore Elementary School	Overall Elementary Schools	District**
# Surveys Completed	131	5,579	21,629
# Reportable Surveys	117	4,969	18,654
# Students Enrolled*	150	6,331	28,945
Reportable Response Rate	78.00%	78.49%	64.45%

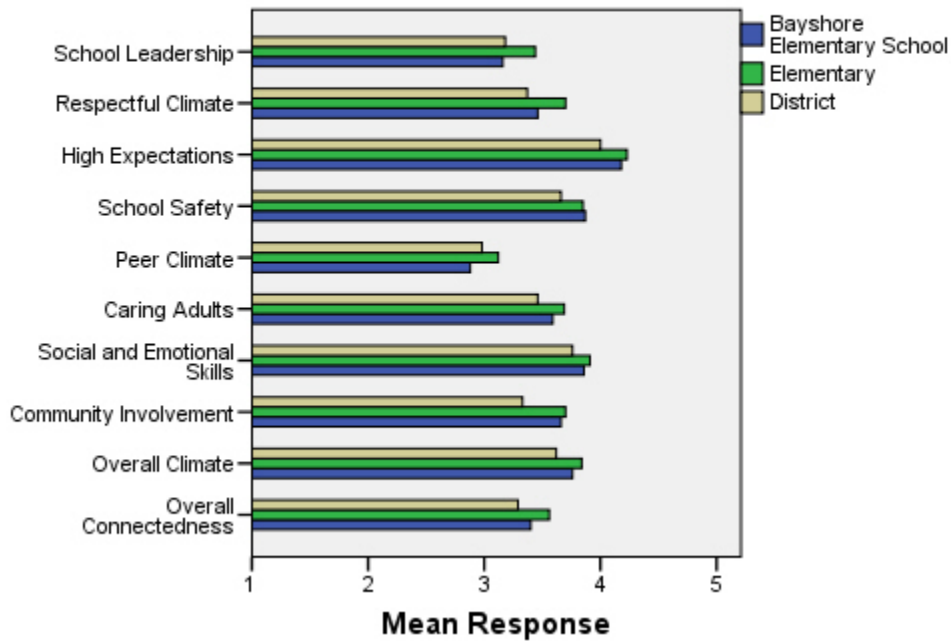
\*Number enrolled as of April 1, 2008

\*\*District data does not include KCC responses

Each question in the survey related to a factor or concept, and a score was calculated based on the mean response for the questions related to each factor. The factors measured in the survey were:

- **School Leadership and Student Involvement:** This factor reflects students' feelings about the decision making of school leaders as well as student participation in the school governance. Students selected responses between 1 and 5 where 1 indicates a low level of school leadership and student involvement and 5 indicates a high level of school leadership and student involvement.
- **Respectful Climate:** This factor reflects students' feelings about fairness of rules and respect for students' contributions. Students selected responses between 1 and 5 where 1 indicates a lack of a respectful climate and 5 indicates a highly respectful climate for students.
- **High Expectations:** This factor reflects students' feelings about their own expectations as well as those of adults in their school and community. Students selected responses between 1 and 5 where 1 indicates a lack of high expectations and 5 indicates a high level of high expectations.
- **School Safety:** This factor reflects students' feelings about bullies and gangs at school as well as general crime and violence in the community. Students selected responses between 1 and 5 where 1 indicates a low level of school safety and 5 indicates a high level of school safety.
- **Peer Climate:** This factor reflects students' feelings about how respectful students are to one another and how helpful students are to other students. Students selected responses between 1 and 5 where 1 indicates a more negative peer climate and 5 indicates a very positive peer climate at the school.
- **Caring Adults:** This factor reflects students' feelings about how close they feel to adults in the school. Students selected responses between 1 and 5 where 1 indicates a lack of caring adult relationships and 5 indicates strong caring adult relationships at the school.
- **Social and Emotional Learning:** This factor reflects students' ability to think about the consequences of their actions and to empathize with others. Students selected responses between 1 and 5 where 1 indicates that students at the school perceive themselves as having poorer social and emotional learning, and 5 indicates higher levels of social and emotional learning.
- **Community Involvement:** This factor reflects students' feelings about how supportive and welcoming the school is with parents and the community. Students selected responses between 1 and 5 where 1 indicates a less supportive and welcoming environment and 5 indicates a more supportive and welcoming environment.
- **Overall Climate:** The overall climate score was computed as the mean of three scales: school leadership, high expectations and school safety.
- **Overall Connectedness:** Overall connectedness score was computed as a mean of four scales: respectful climate, peer climate, caring adults and community involvement.

### Climate and Connectedness Student Survey - Bayshore



Student Survey Mean Response by Factors Related to School Climate - Overall District			
	Bayshore Elementary School	Overall Elementary Schools	District
School Leadership	3.16	3.44	3.18
Respectful Climate	3.46	3.70	3.37
High Expectations	4.18	4.23	4.00
School Safety	3.87	3.85	3.66
Peer Climate	2.88	3.12	2.98
Caring Adults	3.59	3.69	3.46
Social and Emotional Skills	3.86	3.91	3.76
Community Involvement	3.66	3.70	3.33
Overall Climate	3.76	3.84	3.62
Overall Connectedness	3.40	3.56	3.29

Range is from a low of 1 to a high of 5

Students were also asked to answer questions related to school danger. The following table provides the responses for those questions:

Student Survey Results of the School Danger Questions - Percent of Students Responding in Each Category					
	0 Times	1-2 Times	3-6 Times	7-12 Times	> 12 Times
<b>Bayshore Elementary School</b>					
Under the influence of drugs?	93.97%	4.31%	0.00%	0.86%	0.86%
Under the influence of alcohol?	93.04%	4.35%	1.74%	0.00%	0.87%
Destroy things (vandalism)?	35.96%	33.33%	18.42%	3.51%	8.77%
Get into fights?	6.03%	31.03%	29.31%	9.48%	24.14%
Steal things?	29.31%	37.07%	16.38%	8.62%	8.62%
Threaten or bully?	19.83%	18.10%	23.28%	8.62%	30.17%
Under the influence of inhalants?	46.09%	30.43%	7.83%	7.83%	7.83%
Carry weapons?	80.00%	16.52%	1.74%	0.87%	0.87%
<b>Overall Elementary Schools</b>					
Under the influence of drugs?	91.87%	5.65%	1.22%	0.31%	0.96%
Under the influence of alcohol?	91.42%	6.01%	1.16%	0.51%	0.90%
Destroy things (vandalism)?	46.82%	32.08%	12.45%	3.30%	5.36%
Get into fights?	22.32%	35.75%	22.56%	7.96%	11.41%
Steal things?	49.79%	27.92%	12.01%	4.33%	5.95%
Threaten or bully?	32.34%	28.83%	17.08%	7.78%	13.97%
Under the influence of inhalants?	71.03%	17.07%	6.14%	2.63%	3.12%
Carry weapons?	79.22%	15.35%	3.17%	0.59%	1.68%
<b>District</b>					
Under the influence of drugs?	60.45%	15.05%	9.54%	3.92%	11.04%
Under the influence of alcohol?	63.11%	16.37%	8.90%	4.43%	7.19%
Destroy things (vandalism)?	41.26%	29.47%	15.45%	5.88%	7.94%
Get into fights?	26.40%	35.20%	21.96%	7.11%	9.33%
Steal things?	44.80%	25.68%	13.81%	6.98%	8.74%
Threaten or bully?	32.21%	26.21%	16.68%	9.27%	15.63%
Under the influence of inhalants?	72.79%	14.21%	5.66%	2.48%	4.87%
Carry weapons?	69.45%	19.15%	5.34%	2.01%	4.06%

Student Survey Results of the Mean Factor Score by Ethnicity (Self-Reported)							
	AKNA/AI	AF AM	Hispanic	Asian/NH	White	Other	Multi-Ethnic
<b>Bayshore Elementary School</b>							
School Leadership	3.00	3.00	3.63	3.54	3.12	2.76	3.45
Respectful Climate	3.17	3.06	3.53	3.72	3.61	3.07	3.27
High Expectations	4.05	4.29	3.90	4.28	4.25	3.98	4.41
School Safety	3.74	3.80	4.07	3.64	4.03	3.29	4.08
Peer Climate	2.82	2.40	3.10	3.06	2.83	2.82	3.15
Caring Adults	3.63	3.33	3.70	3.61	3.63	3.30	3.57
Social and Emotional Skills	3.81	3.47	3.77	3.98	3.92	3.74	3.68
Community Involvement	3.65	3.24	3.51	3.85	3.63	3.77	3.65
Overall Climate	3.60	3.70	3.87	3.84	3.83	3.28	4.04
Overall Connectedness	3.31	3.01	3.55	3.60	3.43	3.28	3.25
<b>Overall Elementary Schools</b>							
School Leadership	3.56	3.50	3.52	3.55	3.37	3.44	3.42
Respectful Climate	3.75	3.60	3.66	3.72	3.71	3.69	3.63
High Expectations	4.12	4.23	4.23	4.22	4.26	4.19	4.25
School Safety	3.75	3.63	3.73	3.68	4.03	3.66	3.79
Peer Climate	3.12	2.94	3.12	3.18	3.16	3.05	3.05
Caring Adults	3.64	3.73	3.64	3.59	3.74	3.60	3.76
Social and Emotional Skills	3.86	3.84	3.91	3.95	3.93	3.90	3.89
Community Involvement	3.66	3.60	3.67	3.66	3.75	3.66	3.70
Overall Climate	3.81	3.79	3.84	3.81	3.89	3.76	3.82
Overall Connectedness	3.56	3.49	3.51	3.53	3.60	3.49	3.56
<b>District</b>							
School Leadership	3.33	3.14	3.19	3.28	3.14	3.17	3.15
Respectful Climate	3.48	3.18	3.32	3.39	3.39	3.37	3.33
High Expectations	3.98	3.94	3.96	4.02	4.02	4.00	4.01
School Safety	3.60	3.48	3.55	3.47	3.78	3.51	3.62
Peer Climate	3.01	2.85	2.94	3.05	3.00	2.92	2.93
Caring Adults	3.49	3.43	3.37	3.33	3.51	3.42	3.46
Social and Emotional Skills	3.73	3.66	3.73	3.81	3.78	3.75	3.74
Community Involvement	3.37	3.22	3.31	3.29	3.34	3.34	3.31
Overall Climate	3.64	3.52	3.57	3.59	3.65	3.56	3.60
Overall Connectedness	3.33	3.17	3.24	3.26	3.31	3.26	3.27

The response rate is not high enough to provide statistically reliable results for Bayshore Elementary School's Staff Survey Results.

Parent/Guardian Survey Response Rate			
	Bayshore Elementary School	Overall Elementary Schools	District**
# Surveys Completed	117	3,933	7,415
# Primary Guardians*	529	23,668	48,693
Response Rate	22.12%	16.62%	15.23%

\*Number students enrolled as of April 1, 2008 without dual guardians included

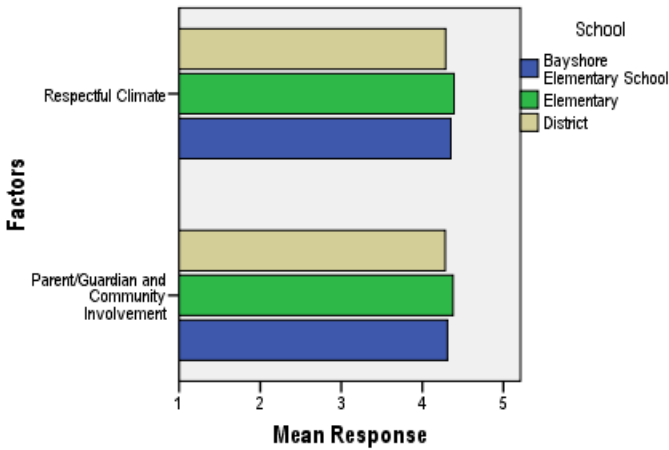
\*\*District data

- 1) does not include KCC responses;
- 2) does include responses without a school designation

Two factors are calculated from the Parent/Guardian Survey. All results other than the factor scores below are reported by individual question: questions in the graphs are condensed phrases from the full question, while questions in the tables are the full question.

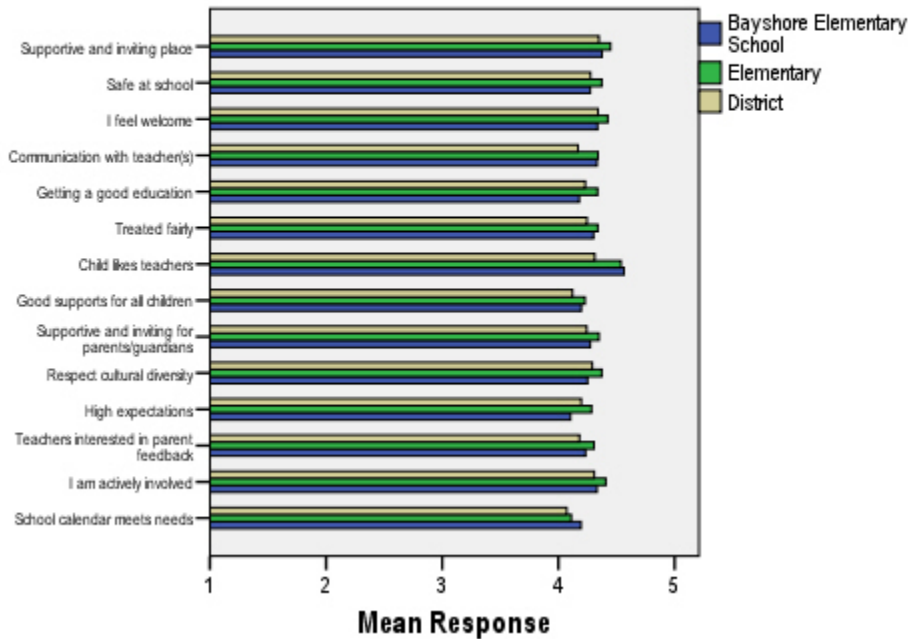
- **Respectful Climate:** This factor is calculated by determining the mean of five questions: 1) My child’s school is a supportive and inviting place, 2) I feel welcome at this school, 3) I am satisfied with communication with my child’s teacher(s), 4) This school is a supportive and inviting place for parents/guardians and 5) Adults at this school respect cultural diversity.
- **Parent/Guardian and Community Involvement:** This factor is calculated by determining the mean of five questions: 1) I feel welcome at this school, 2) This school is a supportive and inviting place for parents/guardians, 3) Adults at this school respect cultural diversity, 4) Teacher’s at my child’s school are interested in what I have to say and 5) I feel like I am actively involved in my child’s education.

**Parent/Guardian Survey Mean Factor Scores (Range is from a low of 1 to a high of 5)**



Parent/Guardian Factor Scores			
	Bayshore Elementary School	Overall Elementary Schools	District
Respectful Climate	4.35	4.39	4.29
Parent/Guardian and Community Involvement	4.31	4.38	4.28

**Climate and Connectedness Parent/Guardian Survey - Bayshore**



Parent/Guardian Mean Response by Questions Related to School Climate - Overall

	Bayshore Elementary School	Overall Elementary Schools	District
My child's school is a supportive and inviting place	4.38	4.45	4.35
My child is safe at school	4.27	4.37	4.28
I feel welcome at this school	4.34	4.43	4.34
I am satisfied with communication with my child's teacher(s)	4.33	4.34	4.17
My child is getting a good education at this school	4.18	4.34	4.23
My child is treated fairly at school	4.30	4.34	4.25
My child likes his/her teachers	4.57	4.54	4.31
At this school, there are good supports for all children, including children with learning disabilities	4.20	4.23	4.12
This school is a supportive and inviting place for parents/guardians	4.27	4.35	4.24
Adults at this school respect cultural diversity	4.25	4.37	4.29
Adults at this school have high expectations of my child	4.10	4.29	4.20
Teachers at my child's school are interested in what I have to say	4.23	4.31	4.18
I feel like I am actively involved in my child's education	4.33	4.41	4.31
The district's school calendar meets the needs of my child and our family	4.19	4.11	4.07

Range is from a low of 1 to a high of 5

Parent/Guardian Mean Response by Questions Related to School Climate by Ethnicity (Self-Reported)							
Bayshore Elementary School	AKNA/AI	AF AM	Hispanic	Asian/NH	White	Other	ME
My child's school is a supportive and inviting place	4.00	4.00	4.40	4.61	4.34	4.00	4.25
My child is safe at school	4.25	5.00	4.40	4.56	4.20	4.00	4.25
I feel welcome at this school	4.00	5.00	4.00	4.61	4.31	4.00	4.25
I am satisfied with communication with my child's teacher(s)	4.75	5.00	3.80	4.72	4.27	5.00	4.00
My child is getting a good education at this school	4.25	4.00	4.20	4.83	4.05	4.00	4.00
My child is treated fairly at school	3.75	5.00	4.00	4.67	4.26	4.00	4.25
My child likes his/her teachers	5.00	4.00	4.00	4.67	4.56	5.00	4.50
At this school, there are good supports for all children, including children with learning disabilities	3.50	5.00	4.40	4.56	4.13	4.00	4.25
This school is a supportive and inviting place for parents/guardians	3.50	5.00	4.00	4.61	4.24	4.00	4.25
Adults at this school respect cultural diversity	2.75	5.00	4.20	4.28	4.31	4.00	4.25
Adults at this school have high expectations of my child	3.75	5.00	3.60	4.61	4.01	4.00	4.50
Teachers at my child's school are interested in what I have to say	3.00	4.00	4.00	4.56	4.23	4.00	4.25
I feel like I am actively involved in my child's education	3.75	5.00	4.60	4.50	4.30	4.00	4.25
The district's school calendar meets the needs of my child and our family	4.00	5.00	4.20	4.33	4.17	4.00	4.00
<b>Overall Elementary Schools</b>							
My child's school is a supportive and inviting place	4.47	4.36	4.51	4.44	4.47	4.26	4.46
My child is safe at school	4.42	4.40	4.42	4.36	4.38	4.23	4.35
I feel welcome at this school	4.37	4.38	4.47	4.48	4.44	4.27	4.49
I am satisfied with communication with my child's teacher(s)	4.40	4.30	4.45	4.36	4.35	4.19	4.35
My child is getting a good education at this school	4.40	4.28	4.44	4.40	4.33	4.04	4.38
My child is treated fairly at school	4.34	4.15	4.37	4.32	4.38	4.14	4.33
My child likes his/her teachers	4.52	4.41	4.47	4.53	4.57	4.49	4.55
At this school, there are good supports for all children, including children with learning disabilities	4.32	4.06	4.31	4.31	4.22	4.05	4.31
This school is a supportive and inviting place for parents/guardians	4.31	4.22	4.42	4.38	4.36	4.11	4.44
Adults at this school respect cultural diversity	4.28	4.25	4.38	4.27	4.43	4.19	4.39
Adults at this school have high expectations of my child	4.30	4.26	4.36	4.27	4.31	3.95	4.28
Teachers at my child's school are interested in what I have to say	4.35	4.25	4.39	4.24	4.33	4.16	4.31
I feel like I am actively involved in my child's education	4.38	4.48	4.40	4.31	4.45	4.20	4.40
The district's school calendar meets the needs of my child and our family	4.22	4.25	4.20	4.19	4.10	3.62	4.08
<b>District</b>							
My child's school is a supportive and inviting place	4.37	4.20	4.41	4.37	4.37	4.20	4.37
My child is safe at school	4.31	4.18	4.29	4.31	4.29	4.11	4.30
I feel welcome at this school	4.31	4.18	4.38	4.36	4.36	4.23	4.40
I am satisfied with communication with my child's teacher(s)	4.21	3.99	4.32	4.23	4.16	4.03	4.20
My child is getting a good education at this school	4.28	4.09	4.33	4.31	4.23	4.03	4.26
My child is treated fairly at school	4.21	3.94	4.30	4.24	4.29	4.08	4.24
My child likes his/her teachers	4.33	4.06	4.31	4.35	4.33	4.20	4.34
At this school, there are good supports for all children, including children with learning disabilities	4.19	3.90	4.24	4.23	4.11	3.97	4.18
This school is a supportive and inviting place for parents/guardians	4.21	4.05	4.31	4.29	4.26	4.05	4.31
Adults at this school respect cultural diversity	4.20	4.02	4.29	4.22	4.34	4.17	4.31
Adults at this school have high expectations of my child	4.24	4.05	4.26	4.21	4.21	3.94	4.20
Teachers at my child's school are interested in what I have to say	4.22	4.04	4.28	4.17	4.20	4.05	4.19
I feel like I am actively involved in my child's education	4.29	4.36	4.37	4.24	4.33	4.20	4.30
The district's school calendar meets the needs of my child and our family	4.19	4.18	4.21	4.16	4.06	3.66	4.02

Range is from a low of 1 to a high of 5