

Bowman Elementary School Overview

Statement of Program

Willard Bowman Elementary School has been extremely active in developing personal assets for our students. Our school has five unique options: the neighborhood, open-optional, autism, special education preschool and the speech preschool programs. Our staff and community realize the importance of making our school the center of our community and providing meaningful experiences for our students.

We have a strong and active PTA, Open-Optional Parent Group and Student Council. Our PTA provides financial support for staff and promotes high volunteerism in our school. The staff promotes a positive, caring atmosphere for students and families.

We are in our third year of implementation of the Houghton Mifflin Reading program. Our entire staff has made a strong commitment to focus on our Positive School Discipline policy.

From the School Report Card

School Goals	
Goal	Level of Achievement
The percentage of students rated proficient on the state language arts assessment will increase from 75.8 to 80.	Attained
The percentage of students rated proficient on the state math assessment will increase from 77.1 to 80.	Not Attained
Conduct intentional focus and promotion of positive schoolwide discipline.	Attained

From the School Report Card

Budget*	
2006-07 Actual Expenditures	\$2,522,012
2007-08 Revised Budgeted Amount	\$2,975,473
2008-09 Proposed Budget	\$2,962,141

*Dollars budgeted or expended are general fund only
From IFAS

Bowman Elementary School Characteristics			
	School	District	Source of Information
Membership	475	48,858	Fall OASIS
Capacity	75.74%	N/A	2008-18 ASD Capital Improvement Plan
Attendance Rate	92.98%	92.83%	NCLB Summer Data Collection
Retention Rate K-8	0.00%	0.60%	SMS and NCLB Summer Data Collection
Transiency Rate	22.61%	26.07%	NCLB Summer Data Collection
Economically Disadvantaged	118	17,717	Fall OASIS
Average Weekly Volunteer Hours	300	4,660	Department of Education Report Card Report
Students Taking the Alternate Assessment	0	228	SMS
Change in Enrollment	-3.85%	-0.76%	Fall Oasis

Teacher Qualification				
Number of Teachers	Percent Fully Licensed	Percent With Advanced Degrees	Number Nationally Board Certified	Percent of Classes Taught by "Highly Qualified Teachers"
42	100.00%	40.47%	0	97.05%

Bowman Elementary School Business Partnerships
H2Oasis; AFD Fire Station #9; Alaska Zoo; Lowes, south Anchorage; Great Alaska Pizza Co., south Anchorage

From the School Report Card

Ethnicity Report							
African-American/Black	Alaska Native/American Indian	Asian	Native Hawaiian/Other Pacific Islander	White	Hispanic	Multi-Ethnic	Total
13	44	29	1	270	47	71	475

From Fall Oasis

Full Academic Year		
Students Enrolled	Students Enrolled for FAY	Percent FAY
489	439	89.78%

From participation file (Grades 3-10)

**Bowman Elementary School
2007-08 Adequate Yearly Progress
Status Report**

Does Not Meet AYP
Level 2

AMO For Language Arts: 77.18%
AMO For Mathematics: 66.09%

Group	Participation Rate				"FAY" (D) Tested & Enrolled "FAY"	Language Arts Performance				Mathematics Performance			
	(A) Number Enrolled	(B) Number Tested	Participation Rate (%)	(C) Participation Rate Met		(E) Proficient on LA	(F) Percent Proficient on LA	(G) LA Target	(H) Met AMO for LA	(I) Proficient on Mathematics	(J) Percent Proficient in Mathematics	(K) Mathematics Target	(L) Met AMO for Mathematics
All Students	237	234	98.7%	Yes	224	179	79.9%	70.6%	Yes	167	74.6%	58.7%	Yes
AF AM	7	7	N/A	N/A	N/A	N/A	N/A	N/A	N/A	N/A	N/A	N/A	N/A
AKNA/AI	28	27	96.4%	Yes	N/A	N/A	N/A	N/A	N/A	N/A	N/A	N/A	N/A
Asian/NH/OPI	18	18	N/A	N/A	N/A	N/A	N/A	N/A	N/A	N/A	N/A	N/A	N/A
White	131	129	98.5%	Yes	128	109	85.2%	68.5%	Yes	104	81.2%	56.3%	Yes
Hispanic	22	22	100%	Yes	N/A	N/A	N/A	N/A	N/A	N/A	N/A	N/A	N/A
ME	31	31	100%	Yes	26	20	76.9%	58%	Yes	21	80.8%	44.5%	Yes
EDS	62	61	98.4%	Yes	54	28	51.9%	63.9%	No	26	48.1%	51.1%	No
SWD	67	65	97%	Yes	65	36	55.4%	65.1%	Yes-SH	35	53.8%	52.4%	Yes
LEP	33	33	100%	Yes	30	20	66.7%	59.3%	Yes	18	60%	46%	Yes

Attendance Rate: Met

93.0% (Threshold is 85%)

N/A is used to indicate:

- (1) Subgroups with 20 or fewer students enrolled on the first day of testing shall not be included in participation rate calculation.
- (2) Subgroups with 25 or fewer students enrolled for the "full academic year" shall not have the performance score computed.

* For the groups where the number enrolled is less than or equal to 40, participation is met when no more than two miss the test. Groups can also meet this target using the average of the past two or three years.

** When a group achieves a "Yes" without meeting the listed target, it has done so using either the 99% confidence interval or Safe Harbor.

*** The results cannot be published without releasing personally identifiable information based upon the EED reporting protocol.

This document was prepared by the ASD Assessment and Evaluation Department.

7/10/2008

Bowman Elementary School
2007-08 Adequate Yearly Progress
Growth Report

The AYP growth reports are generated by the Alaska State Department of Education and Early Development. The reports can be found online at: http://www.asdk12.org/depts/assess_eval/AYP/State_AS_D_AYG_0708.pdf

SBA Proficiency Comparison by Grade for Bowman Elementary School																
	Reading Percent Proficient				Writing Percent Proficient				Mathematics Percent Proficient				Science* Percent Proficient			
	04-05	05-06	06-07	07-08	04-05	05-06	06-07	07-08	04-05	05-06	06-07	07-08	04-05	05-06	06-07	07-08
All Students	80.38%	81.39%	84.94%	81.47%	84.09%	84.42%	82.81%	77.68%	75.85%	75.76%	82.27%	74.79%	N/A	N/A	N/A	43.75%
Grade 3	70.59%	84.00%	79.41%	80.00%	74.63%	92.00%	76.00%	81.67%	75.00%	84.00%	81.63%	86.67%	N/A	N/A	N/A	N/A
Grade 4	80.65%	71.21%	90.20%	76.92%	83.87%	86.36%	95% or more	80.00%	80.65%	66.67%	95% or more	63.08%	N/A	N/A	N/A	43.75%
Grade 5	81.97%	85.71%	82.54%	90.00%	83.61%	83.93%	73.02%	80.00%	73.77%	80.36%	71.43%	86.27%	N/A	N/A	N/A	N/A
Grade 6	87.84%	86.44%	89.47%	80.70%	93.24%	76.27%	87.72%	68.97%	74.32%	74.58%	82.46%	65.52%	N/A	N/A	N/A	N/A

* 2007-08 was the first year Science was administered for grades 4, 8 and 10 on the SBA.

SBA Proficient & Not Proficient by NCLB Groups for Bowman Elementary School								
	Reading		Writing		Mathematics		Science**	
	Percent Proficient	Percent Not Proficient	Percent Proficient	Percent Not Proficient	Percent Proficient	Percent Not Proficient	Percent Proficient	Percent Not Proficient
All Students	81.47%	18.53%	77.68%	22.32%	74.79%	25.21%	43.75%	56.25%
AF AM	60% or more	40% or fewer	60% or more	40% or fewer	42.86%	57.14%	*	*
AKNA/AI	66.67%	33.33%	51.85%	48.15%	55.56%	44.44%	37.50%	62.50%
Asian	80% or more	20% or fewer	80% or more	20% or fewer	76.47%	23.53%	42.86%	57.14%
NH/OPI	*	*	*	*	*	*	*	*
White	83.72%	16.28%	84.50%	15.50%	81.40%	18.60%	51.61%	48.39%
Hispanic	76.19%	23.81%	72.73%	27.27%	63.64%	36.36%	60% or fewer	40% or more
ME	80.65%	19.35%	74.19%	25.81%	77.42%	22.58%	30.00%	70.00%
EDS	62.30%	37.70%	52.46%	47.54%	52.46%	47.54%	22.22%	77.78%
Non-EDS	88.30%	11.70%	86.63%	13.37%	82.66%	17.34%	52.17%	47.83%
SWD	51.85%	48.15%	45.45%	54.55%	49.09%	50.91%	33.33%	66.67%
Non-SWD	90.45%	9.55%	87.64%	12.36%	82.68%	17.32%	46.94%	53.06%
LEP	45.45%	54.55%	25.00%	75.00%	38.46%	61.54%	*	*
Not LEP	83.26%	16.74%	80.54%	19.46%	76.92%	23.08%	46.67%	53.33%
Migrant	75% or more	25% or fewer	55.56%	44.44%	44.44%	55.56%	*	*
Not Migrant	81.61%	18.39%	78.57%	21.43%	76.00%	24.00%	45.16%	54.84%
Female	83.62%	16.38%	81.03%	18.97%	75.21%	24.79%	47.22%	52.78%
Male	79.31%	20.69%	74.36%	25.64%	74.36%	25.64%	39.29%	60.71%

* Results cannot be published without releasing personally identifiable information based upon the EED reporting protocol

** 2007-08 was the first year Science was administered for grades 4, 8 and 10 on the SBA.

SBA Mean Scale Score Comparison by NCLB Groups for Bowman Elementary School								
	Reading		Writing		Mathematics		Science***	
	06-07	07-08	06-07	07-08	06-07	07-08	06-07	07-08
All Students	382.34	371.51	373.47	363.59	361.45	355.24	N/A	295.39
AF AM	*	339.00	*	338.86	*	297.00	N/A	*
AKNA/AI	339.39	337.37	336.69	316.41	337.53	323.33	N/A	258.38
Asian**	374.25	390.31	385.43	367.75	384.74	385.65	N/A	298.71
NH/OPI**	N/A	*	N/A	*	N/A	*	N/A	*
White	391.32	381.41	378.49	377.16	361.15	367.34	N/A	312.90
Hispanic	383.00	371.19	371.10	356.95	365.20	328.55	N/A	310.60
ME	404.72	359.16	393.81	358.52	387.50	349.29	N/A	273.70
EDS	348.24	323.62	338.98	316.46	340.45	306.20	N/A	252.72
Non-EDS	395.62	388.60	387.84	380.30	370.26	372.54	N/A	312.09
SWD	316.35	308.81	322.22	305.85	316.71	298.11	N/A	271.07
Non-SWD	404.46	390.53	392.14	381.43	377.84	372.80	N/A	302.84
LEP	358.42	291.09	359.30	259.08	364.79	283.00	N/A	*
Not LEP	386.17	375.52	375.96	369.26	360.86	359.49	N/A	300.02
Migrant	360.78	330.44	331.56	331.11	347.33	326.89	N/A	*
Not Migrant	383.18	373.17	375.25	364.89	362.05	356.38	N/A	296.24
Female	392.74	382.81	389.46	382.56	361.64	361.80	N/A	306.61
Male	370.54	360.22	357.05	344.78	361.26	348.68	N/A	280.96

* Results cannot be published without releasing personally identifiable information based upon the EED reporting protocol

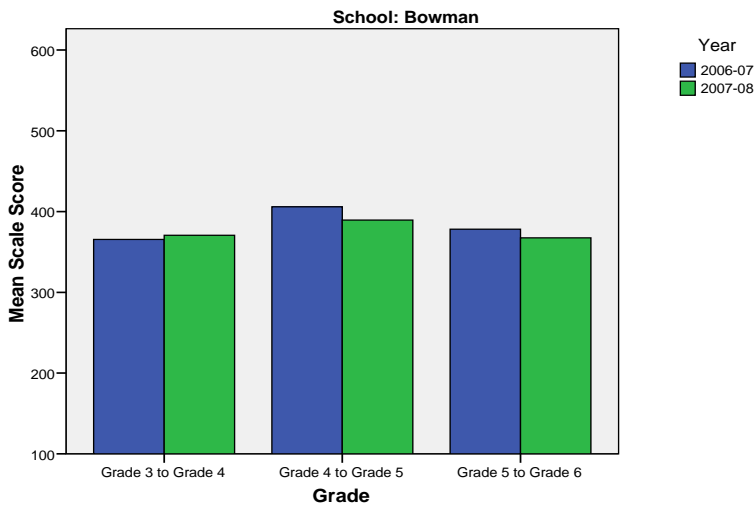
** Prior to 2007-08 the Asian category includes Native Hawaiian/Other Pacific Islander. In 2007-08 Native Hawaiian/Other Pacific Islander is a separate ethnic category.

*** 2007-08 was the first year Science was administered for grades 4, 8 and 10 on the SBA.

Bowman Elementary School SBA Change Average Scale Score by NCLB Groups: Reading									
	Average Scale Score of Students Tested in District Both Years			Average Scale Score of Students Tested in District Both Years			Average Scale Score of Students Tested in District Both Years		
	Grade 3 in 06-07	Grade 4 in 07-08	Difference	Grade 4-in 06-07	Grade 5 in 07-08	Difference	Grade 5-in 06-07	Grade 6 in 07-08	Difference
All Students	365.48	370.67	5.20	405.82	389.36	-16.47	378.15	367.47	-10.68
AF AM	*	*	*	*	*	*	*	*	*
AKNA/AI	337.88	323.63	-14.25	*	*	*	331.71	326.14	-5.57
Asian	369.14	377.57	8.43	*	*	*	*	*	*
NH/OPI	*	*	*	*	*	*	*	*	*
White	370.37	380.73	10.37	414.59	397.19	-17.41	387.76	377.38	-10.38
Hispanic	426.20	420.80	-5.40	*	*	*	*	*	*
ME	359.63	356.88	-2.75	383.67	358.50	-25.17	399.67	367.50	-32.17
EDS	311.00	306.35	-4.65	378.71	364.86	-13.86	344.13	328.93	-15.20
Non-EDS	386.52	395.52	9.00	410.82	393.87	-16.95	391.58	382.68	-8.89
SWD	293.56	301.63	8.06	350.89	348.33	-2.56	299.77	301.54	1.77
Non-SWD	391.04	395.22	4.18	419.56	399.61	-19.94	403.63	388.90	-14.73
LEP	*	*	*	*	*	*	*	*	*
Not LEP	367.04	376.05	9.02	405.82	389.36	-16.47	382.29	371.39	-10.90
Migrant	*	*	*	*	*	*	*	*	*
Not Migrant	369.62	375.16	5.53	406.30	390.02	-16.27	375.37	366.31	-9.06
Female	382.86	386.42	3.56	414.57	394.39	-20.17	375.04	366.96	-8.07
Male	340.44	348.00	7.56	396.68	384.09	-12.59	381.64	368.04	-13.60

* Results cannot be published without releasing personally identifiable information based upon the EED reporting protocol

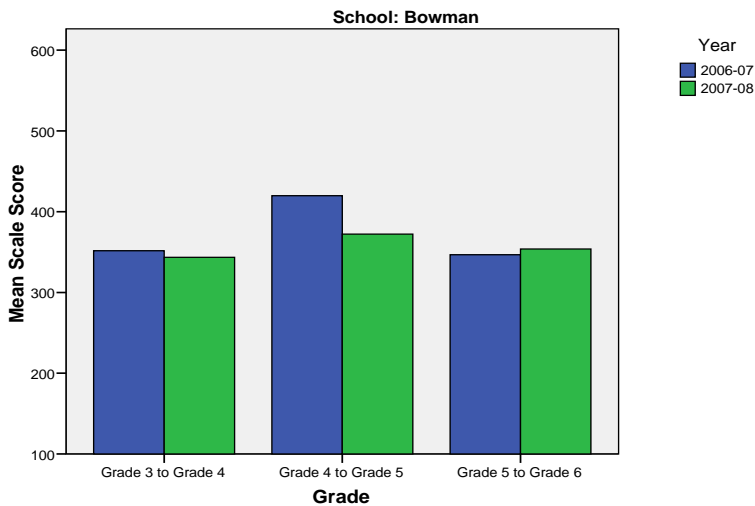
Change in Mean Scale Score in SBA Reading by Grade Between 2006-07 and 2007-08



Bowman Elementary School SBA Change Average Scale Score by NCLB Groups: Writing									
	Average Scale Score of Students Tested in District Both Years			Average Scale Score of Students Tested in District Both Years			Average Scale Score of Students Tested in District Both Years		
	Grade 3 in 06-07	Grade 4 in 07-08	Difference	Grade 4- in 06-07	Grade 5 in 07-08	Difference	Grade 5- in 06-07	Grade 6 in 07-08	Difference
All Students	351.69	343.49	-8.20	419.80	372.27	-47.53	346.54	353.83	7.30
AF AM	*	*	*	*	*	*	*	*	*
AKNA/AI	324.29	298.14	-26.14	*	*	*	302.43	305.00	2.57
Asian	377.43	344.29	-33.14	*	*	*	*	*	*
NH/OPI	*	*	*	*	*	*	*	*	*
White	346.95	359.79	12.84	428.67	377.15	-51.52	358.59	369.97	11.38
Hispanic	*	*	*	*	*	*	312.00	296.80	-15.20
ME	367.33	354.17	-13.17	403.00	362.67	-40.33	367.17	368.83	1.67
EDS	324.88	311.19	-13.69	396.00	356.00	-40.00	317.33	312.13	-5.20
Non-EDS	366.48	361.31	-5.17	424.18	375.26	-48.92	357.77	369.87	12.10
SWD	300.57	307.21	6.64	369.00	331.11	-37.89	289.50	283.86	-5.64
Non-SWD	374.77	359.87	-14.90	432.50	382.56	-49.94	366.50	378.33	11.83
LEP	*	*	*	*	*	*	*	*	*
Not LEP	350.34	351.46	1.12	419.80	372.27	-47.53	352.88	362.69	9.80
Migrant	*	*	*	*	*	*	*	*	*
Not Migrant	356.52	346.31	-10.21	421.00	372.73	-48.27	344.73	351.65	6.92
Female	370.52	359.90	-10.62	436.78	383.78	-53.00	352.68	357.32	4.64
Male	335.21	329.13	-6.08	402.05	360.23	-41.82	339.92	350.08	10.15

* Results cannot be published without releasing personally identifiable information based upon the EED reporting protocol

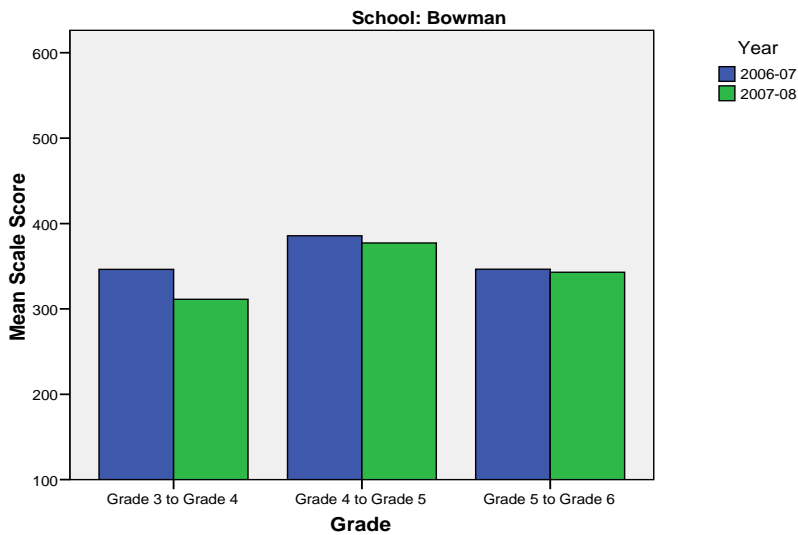
Change in Mean Scale Score in SBA Writing by Grade between 2006-07 and 2007-08



Bowman Elementary School SBA Change Average Scale Score by NCLB Groups: Mathematics									
	Average Scale Score of Students Tested in District Both Years			Average Scale Score of Students Tested in District Both Years			Average Scale Score of Students Tested in District Both Years		
	Grade 3 in 06-07	Grade 4 in 07-08	Difference	Grade 4- in 06-07	Grade 5 in 07-08	Difference	Grade 5- in 06-07	Grade 6 in 07-08	Difference
All Students	346.30	311.27	-35.02	385.58	377.20	-8.38	346.46	342.93	-3.54
AF AM	*	*	*	*	*	*	*	*	*
AKNA/AI	313.00	290.00	-23.00	*	*	*	323.00	305.14	-17.86
Asian	392.29	342.57	-49.71	*	*	*	*	*	*
NH/OPI	*	*	*	*	*	*	*	*	*
White	343.56	308.72	-34.83	387.78	380.59	-7.19	359.32	354.32	-5.00
Hispanic	*	*	*	*	*	*	301.00	287.00	-14.00
ME	356.33	312.33	-44.00	383.50	384.00	0.50	345.83	368.67	22.83
EDS	308.63	278.06	-30.56	370.86	350.29	-20.57	319.40	312.00	-7.40
Non-EDS	367.82	330.25	-37.57	388.29	382.16	-6.13	356.87	354.82	-2.05
SWD	303.86	281.36	-22.50	342.11	315.67	-26.44	284.00	287.00	3.00
Non-SWD	366.10	325.23	-40.87	396.44	392.58	-3.86	368.33	362.50	-5.82
LEP	*	*	*	*	*	*	*	*	*
Not LEP	345.95	315.33	-30.63	385.58	377.20	-8.38	353.04	350.20	-2.84
Migrant	*	*	*	*	*	*	*	*	*
Not Migrant	350.63	315.12	-35.51	385.98	378.02	-7.95	344.29	340.08	-4.21
Female	350.20	313.00	-37.20	389.61	380.09	-9.52	337.11	339.50	2.39
Male	343.04	309.83	-33.21	381.36	374.18	-7.18	356.54	346.62	-9.92

* Results cannot be published without releasing personally identifiable information based upon the EED reporting protocol

Change in Mean Scale Score in SBA Mathematics by Grade between 2006-07 and 2007-08



Reading: SBA Results Compared for Bowman Elementary School, District and State Grades 3 Through 6															
	% Advanced Proficient			% Proficient			% Below Proficient			% Far Below Proficient			% Tested		
	School	District	State	School	District	State	School	District	State	School	District	State	School	District	State
All Students	37.07%	39.70%	35.67%	44.40%	43.89%	45.50%	13.36%	11.60%	13.02%	5.17%	4.80%	5.80%	97.89%	98.15%	97.98%
AF AM	*	20.73%	22.99%	71.43%	54.18%	53.49%	*	17.79%	16.46%	*	7.30%	7.06%	100.00%	98.04%	97.49%
AKNA/AI	22.22%	20.23%	14.62%	44.44%	51.11%	48.17%	22.22%	18.54%	24.83%	11.11%	10.11%	12.37%	96.43%	96.88%	97.59%
Asian	37.50%	30.22%	28.26%	56.25%	48.71%	51.04%	*	15.32%	15.32%	*	5.75%	5.38%	94.12%	97.64%	97.67%
NH/OPI	*	14.67%	N/A	*	51.03%	N/A	*	24.59%	N/A	*	9.71%	N/A	100.00%	98.98%	N/A
White	43.41%	52.75%	47.28%	40.31%	38.06%	42.41%	11.63%	6.69%	7.27%	4.65%	2.50%	3.03%	98.47%	98.68%	98.28%
Hispanic	38.10%	32.35%	31.74%	38.10%	46.43%	48.60%	*	14.67%	13.66%	*	6.55%	6.00%	95.45%	97.14%	97.32%
ME	29.03%	33.26%	34.76%	51.61%	48.25%	47.75%	*	13.47%	12.80%	*	5.01%	4.70%	100.00%	98.15%	98.03%
EDS	16.39%	22.85%	21.47%	45.90%	49.71%	48.65%	26.23%	19.04%	20.31%	11.48%	8.40%	9.57%	98.39%	97.50%	96.44%
Not EDS	44.44%	51.44%	46.31%	43.86%	39.84%	43.15%	8.77%	6.42%	7.56%	2.92%	2.30%	2.98%	97.71%	98.61%	99.16%
SWD	9.26%	10.08%	9.29%	42.59%	37.10%	37.96%	31.48%	32.15%	31.20%	16.67%	20.67%	21.55%	94.74%	94.28%	93.60%
Non-SWD	45.51%	45.02%	40.09%	44.94%	45.12%	46.77%	7.87%	7.91%	9.98%	1.69%	1.95%	3.17%	98.89%	98.88%	98.75%
LEP	*	4.97%	3.12%	45.45%	39.93%	38.06%	45.45%	37.14%	38.40%	*	17.96%	20.42%	84.62%	94.25%	96.11%
Not LEP	38.91%	42.78%	39.95%	44.34%	44.25%	46.48%	11.76%	9.33%	9.68%	4.98%	3.64%	3.88%	98.66%	98.51%	98.23%
Migrant	*	27.01%	17.29%	55.56%	50.34%	48.58%	*	16.44%	23.78%	*	6.21%	10.35%	100.00%	98.35%	98.50%
Not Migrant	37.67%	40.26%	36.97%	43.95%	43.61%	45.29%	13.90%	11.38%	12.26%	4.48%	4.74%	5.48%	97.81%	98.14%	97.94%
Female	43.10%	44.40%	39.45%	40.52%	43.41%	45.33%	12.93%	8.75%	10.85%	3.45%	3.44%	4.37%	98.31%	98.39%	98.31%
Male	31.03%	35.15%	32.09%	48.28%	44.37%	45.67%	13.79%	14.36%	15.08%	6.90%	6.13%	7.16%	97.48%	97.92%	97.66%

* Results cannot be published without releasing personally identifiable information based upon the EED reporting protocol

Writing: SBA Results Compared for Bowman Elementary School, District and State Grades 3 Through 6															
	% Advanced Proficient			% Proficient			% Below Proficient			% Far Below Proficient			% Tested		
	School	District	State	School	District	State	School	District	State	School	District	State	School	District	State
All Students	31.76%	34.87%	30.49%	45.92%	44.25%	44.50%	19.74%	18.78%	22.32%	2.58%	2.10%	2.69%	98.31%	98.11%	97.96%
AF AM	*	20.71%	20.51%	57.14%	46.71%	48.68%	*	28.71%	27.18%	*	3.88%	3.63%	100.00%	98.15%	97.71%
AKNA/AI	25.93%	17.15%	12.11%	25.93%	45.31%	41.05%	37.04%	33.38%	40.69%	11.11%	4.15%	6.15%	96.43%	96.51%	97.64%
Asian	37.50%	30.17%	28.49%	50.00%	45.92%	45.93%	*	21.33%	23.31%	*	2.58%	2.27%	94.12%	97.56%	97.67%
NH/OPI	*	14.02%	N/A	*	42.89%	N/A	*	39.38%	N/A	*	3.71%	N/A	100.00%	99.18%	N/A
White	32.56%	45.85%	40.04%	51.94%	41.91%	44.71%	*	11.26%	13.97%	*	0.99%	1.28%	98.47%	98.66%	98.22%
Hispanic	36.36%	27.33%	27.00%	36.36%	47.25%	48.36%	13.64%	22.54%	22.23%	13.64%	2.88%	2.41%	100.00%	97.07%	97.36%
ME	32.26%	28.51%	29.14%	41.94%	47.68%	47.29%	*	21.31%	21.37%	*	2.51%	2.20%	100.00%	98.15%	97.96%
EDS	21.31%	18.92%	17.53%	31.15%	47.34%	45.15%	39.34%	29.95%	32.95%	8.20%	3.79%	4.37%	98.39%	97.50%	96.53%
Not EDS	35.47%	45.99%	40.21%	51.16%	42.10%	44.01%	*	10.99%	14.35%	*	0.92%	1.44%	98.29%	98.54%	99.06%
SWD	10.91%	7.09%	6.94%	34.55%	38.82%	37.02%	43.64%	45.96%	47.34%	10.91%	8.12%	8.69%	96.49%	94.28%	93.97%
Non-SWD	38.20%	39.86%	34.45%	49.44%	45.23%	45.76%	*	13.89%	18.11%	*	1.02%	1.69%	98.89%	98.83%	98.66%
LEP	*	4.71%	3.14%	*	37.05%	30.66%	50.00%	50.57%	56.76%	25.00%	7.67%	9.44%	92.31%	94.25%	96.18%
Not LEP	33.48%	37.55%	34.08%	47.06%	44.89%	46.32%	18.10%	15.96%	17.79%	1.36%	1.60%	1.81%	98.66%	98.47%	98.20%
Migrant	33.33%	21.44%	14.20%	*	48.58%	42.55%	33.33%	26.63%	38.57%	*	3.35%	4.68%	100.00%	98.51%	98.58%
Not Migrant	31.70%	35.46%	31.63%	46.88%	44.06%	44.64%	19.20%	18.43%	21.18%	2.23%	2.04%	2.55%	98.25%	98.09%	97.92%
Female	42.24%	42.63%	37.48%	38.79%	42.50%	43.42%	*	13.62%	17.40%	*	1.26%	1.70%	98.31%	98.32%	98.22%
Male	21.37%	27.36%	23.87%	52.99%	45.96%	45.52%	22.22%	23.78%	26.98%	3.42%	2.91%	3.63%	98.32%	97.90%	97.72%

* Results cannot be published without releasing personally identifiable information based upon the EED reporting protocol

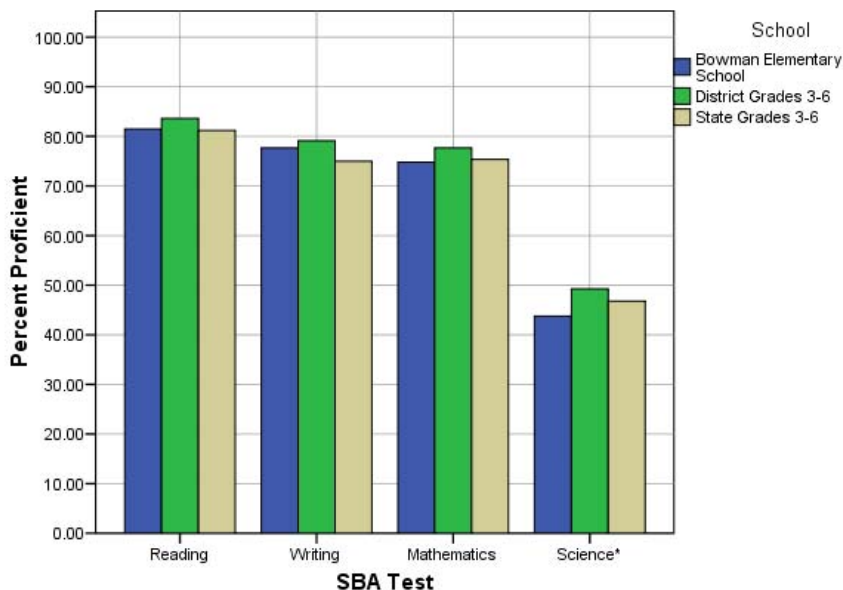
Mathematics: SBA Results Compared for Bowman Elementary School, District and State Grades 3 Through 6															
	% Advanced Proficient			% Proficient			% Below Proficient			% Far Below Proficient			% Tested		
	School	District	State	School	District	State	School	District	State	School	District	State	School	District	State
All Students	40.17%	39.81%	36.08%	34.62%	37.84%	39.26%	11.97%	12.46%	13.78%	13.25%	9.88%	10.88%	98.73%	98.52%	98.12%
AF AM	*	19.48%	22.09%	*	40.14%	41.60%	*	20.19%	18.61%	*	20.19%	17.70%	100.00%	98.38%	97.78%
AKNA/AI	22.22%	23.20%	18.26%	33.33%	39.51%	39.14%	11.11%	19.22%	21.79%	33.33%	18.07%	20.81%	96.43%	96.96%	97.72%
Asian	52.94%	37.02%	34.29%	23.53%	41.20%	41.23%	*	13.76%	14.10%	*	8.03%	10.38%	100.00%	99.27%	98.99%
NH/OPI	*	18.52%	N/A	*	38.07%	N/A	*	20.16%	N/A	*	23.25%	N/A	100.00%	99.39%	N/A
White	46.51%	51.12%	45.75%	34.88%	35.15%	38.35%	13.18%	8.41%	9.81%	5.43%	5.32%	6.09%	98.47%	98.69%	98.17%
Hispanic	36.36%	31.85%	31.11%	27.27%	40.04%	42.19%	*	15.02%	15.10%	*	13.09%	11.60%	100.00%	98.66%	98.47%
ME	32.26%	33.75%	35.45%	45.16%	41.21%	40.61%	9.68%	13.93%	13.30%	12.90%	11.11%	10.64%	100.00%	98.26%	98.00%
EDS	18.03%	24.26%	23.31%	34.43%	41.50%	40.98%	11.48%	17.54%	18.60%	36.07%	16.70%	17.11%	98.39%	98.14%	96.77%
Not EDS	47.98%	50.70%	45.67%	34.68%	35.28%	37.96%	12.14%	8.91%	10.16%	5.20%	5.12%	6.21%	98.86%	98.79%	99.16%
SWD	14.55%	12.52%	12.06%	34.55%	31.53%	32.14%	20.00%	23.68%	23.60%	30.91%	32.27%	32.20%	96.49%	94.19%	93.99%
Non-SWD	48.04%	44.69%	40.12%	34.64%	38.97%	40.45%	9.50%	10.46%	12.13%	7.82%	5.88%	7.30%	99.44%	99.34%	98.85%
LEP	*	8.22%	6.05%	23.08%	36.74%	34.10%	*	24.50%	27.43%	53.85%	30.54%	32.42%	100.00%	97.95%	97.56%
Not LEP	41.63%	42.73%	40.09%	35.29%	37.94%	39.95%	12.22%	11.35%	11.96%	10.86%	7.98%	8.01%	98.66%	98.57%	98.19%
Migrant	33.33%	30.94%	22.37%	*	43.65%	40.27%	*	14.21%	20.36%	44.44%	11.20%	17.00%	100.00%	98.68%	98.54%
Not Migrant	40.44%	40.21%	37.05%	35.56%	37.58%	39.19%	12.00%	12.38%	13.31%	12.00%	9.83%	10.45%	98.68%	98.51%	98.09%
Female	42.74%	41.01%	36.83%	32.48%	38.32%	39.88%	11.97%	11.59%	13.34%	12.82%	9.09%	9.96%	99.15%	98.71%	98.31%
Male	37.61%	38.66%	35.38%	36.75%	37.38%	38.67%	11.97%	13.30%	14.20%	13.68%	10.66%	11.75%	98.32%	98.34%	97.94%

* Results cannot be published without releasing personally identifiable information based upon the EED reporting protocol

Science: SBA Results Compared for Bowman Elementary School, District and State Grade 4															
	% Advanced Proficient			% Proficient			% Below Proficient			% Far Below Proficient			% Tested		
	School	District	State	School	District	State	School	District	State	School	District	State	School	District	State
All Students	21.88%	23.68%	22.1%	21.88%	25.57%	24.7%	39.06%	31.70%	31.3%	17.19%	19.06%	21.9%	98.46%	97.81%	95.35%
AF AM	*	9.18%	8.9%	*	18.84%	23.3%	*	39.13%	38.0%	*	32.85%	29.8%	100.00%	98.57%	94.49%
AKNA/AI	*	6.54%	6.8%	*	21.50%	14.2%	*	42.99%	35.2%	37.50%	28.97%	43.8%	100.00%	96.40%	94.98%
Asian	*	10.18%	13.4%	*	21.40%	19.4%	42.86%	39.30%	37.5%	*	29.12%	29.7%	100.00%	98.28%	97.39%
NH/OPI	*	6.57%	N/A	*	8.03%	N/A	*	34.31%	N/A	*	51.09%	N/A	N/A	98.56%	N/A
White	32.26%	36.40%	32.3%	19.35%	29.08%	29.9%	*	25.33%	27.3%	*	9.19%	10.5%	96.88%	97.87%	94.97%
Hispanic	*	16.17%	18.2%	*	26.15%	26.0%	*	32.08%	33.9%	*	25.61%	21.9%	100.00%	97.12%	96.39%
ME	*	16.06%	18.5%	*	26.12%	26.8%	40.00%	37.47%	35.9%	30.00%	20.34%	18.7%	100.00%	98.32%	96.90%
EDS	*	8.34%	11.0%	*	22.44%	20.1%	38.89%	38.10%	34.7%	38.89%	31.12%	34.2%	94.74%	97.73%	94.99%
Not EDS	30.43%	35.00%	31.2%	21.74%	27.88%	28.5%	39.13%	26.97%	28.5%	8.70%	10.15%	11.9%	100.00%	97.87%	95.64%
SWD	*	8.38%	7.7%	*	16.38%	15.2%	40.00%	36.57%	36.6%	26.67%	38.67%	40.5%	93.75%	93.25%	91.70%
Non-SWD	24.49%	26.43%	24.7%	22.45%	27.22%	26.4%	38.78%	30.82%	30.4%	14.29%	15.53%	18.5%	100.00%	98.68%	96.04%
LEP	*	2.00%	1.5%	*	5.14%	3.8%	*	34.00%	28.3%	*	58.86%	66.5%	100.00%	96.15%	95.67%
Not LEP	23.33%	26.13%	25.2%	23.33%	27.88%	27.9%	40.00%	31.44%	31.8%	13.33%	14.55%	15.1%	98.36%	98.00%	95.30%
Migrant	*	9.70%	9.0%	*	26.87%	15.3%	*	39.55%	34.3%	*	23.88%	41.4%	66.67%	97.10%	97.32%
Not Migrant	22.58%	24.24%	23.0%	22.58%	25.51%	25.3%	37.10%	31.38%	31.1%	17.74%	18.86%	20.5%	100.00%	97.84%	95.21%
Female	27.78%	22.73%	20.8%	19.44%	25.78%	25.2%	41.67%	33.63%	32.6%	11.11%	17.87%	21.4%	97.30%	98.05%	95.43%
Male	14.29%	24.61%	23.4%	25.00%	25.36%	24.2%	35.71%	29.80%	30.1%	25.00%	20.23%	22.3%	100.00%	97.58%	95.27%

* Results cannot be published without releasing personally identifiable information based upon the EED reporting protocol

2007-08 SBA Results Compared for Bowman Elementary School, District and State

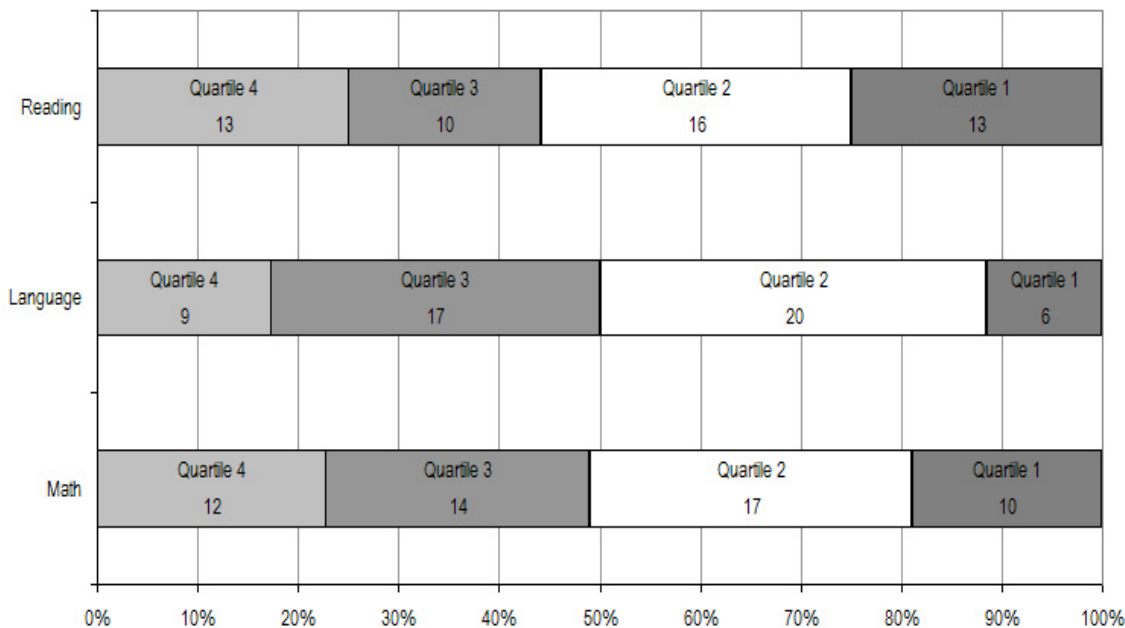


* 2007-08 was the first year Science was administered for grades 4, 8 and 10 on the SBA.

Bowman Elementary School TerraNova Grade 5 Percent in Each Quartile								
Reading	Above Average		Average				Below Average	
	4th Quartile (76-99 percentile)		3rd Quartile (51-75 percentile)		2nd Quartile (26-50 percentile)		1st Quartile (1-25 percentile)	
	School	District	School	District	School	District	School	District
07-08	25.00%	25.65%	19.23%	24.08%	30.77%	23.73%	25.00%	26.55%
06-07	30.2%	33.1%	23.8%	26.1%	25.4%	23.6%	20.6%	17.2%
05-06	36.5%	30.4%	21.2%	26.8%	30.8%	24.5%	11.5%	18.3%
04-05	41.9%	29.2%	17.7%	27.6%	21.0%	24.5%	19.4%	18.7%
03-04	36.5%	30.6%	31.1%	26.9%	21.6%	24.2%	10.8%	18.3%
Language								
07-08	17.31%	26.79%	32.69%	27.20%	38.46%	24.12%	11.54%	21.89%
06-07	28.6%	34.7%	34.9%	26.9%	15.9%	21.4%	20.6%	17.0%
05-06	40.4%	34.0%	25.0%	26.5%	23.1%	22.0%	11.5%	17.5%
04-05	37.1%	32.1%	33.9%	28.3%	16.1%	21.2%	12.9%	18.4%
03-04	39.2%	34.1%	33.8%	26.5%	18.9%	21.7%	8.1%	17.7%
Mathematics								
07-08	22.64%	25.45%	26.42%	26.40%	32.08%	24.47%	18.87%	23.68%
06-07	17.7%	29.7%	30.6%	31.6%	25.8%	21.2%	25.8%	17.4%
05-06	37.7%	28.4%	26.4%	31.9%	24.5%	22.3%	11.3%	17.5%
04-05	32.3%	26.9%	25.8%	31.1%	19.4%	22.9%	22.6%	19.1%
03-04	28.4%	28.3%	33.8%	29.3%	25.7%	22.6%	12.2%	19.8%

The double bold line indicates a change from the TerraNova 2nd edition to the TerraNova 3rd edition.

2007-08 TerraNova 3rd Edition Grade 5 Percent and Count of Students in Each Quartile For Bowman Elementary School



Climate Survey Results for Bowman Elementary School

The Anchorage School District administered the School Climate and Connectedness Surveys in spring 2008 to students in grades 5-12, all school staff and parents/guardians of students in grades K-12. The surveys were done to provide schools with information about perceptions and experiences related to school climate for use in setting school goals and redirecting resources. In the spring of 2008 grades 3 and 4 students were involved in a pilot survey for measuring school climate and connectedness. The results are currently under review by the American Institutes for Research.

Respondents were asked to answer a series of questions that were related to a certain concept. For each item, there were five options from which to choose a response. The answer options ranged from strongly disagree (1) to strongly agree (5).

Student Survey Response Rate – Grades 5-12			
	Bowman Elementary School	Overall Elementary Schools	District**
# Surveys Completed	103	5,579	21,629
# Reportable Surveys	96	4,969	18,654
# Students Enrolled*	112	6,331	28,945
Reportable Response Rate	85.71%	78.49%	64.45%

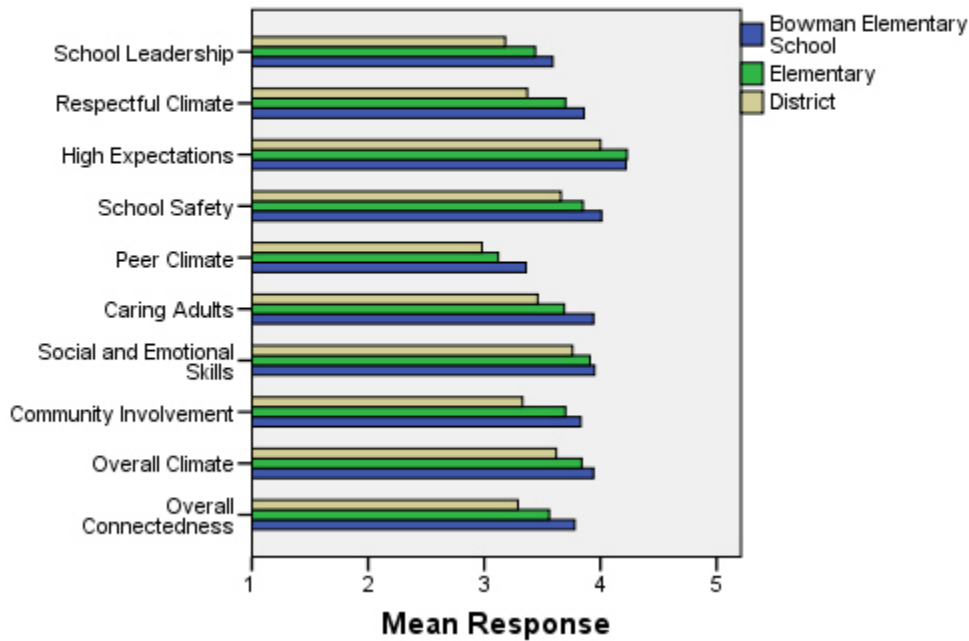
*Number enrolled as of April 1, 2008

**District data does not include KCC responses

Each question in the survey related to a factor or concept, and a score was calculated based on the mean response for the questions related to each factor. The factors measured in the survey were:

- **School Leadership and Student Involvement:** This factor reflects students’ feelings about the decision making of school leaders as well as student participation in the school governance. Students selected responses between 1 and 5 where 1 indicates a low level of school leadership and student involvement and 5 indicates a high level of school leadership and student involvement.
- **Respectful Climate:** This factor reflects students’ feelings about fairness of rules and respect for students’ contributions. Students selected responses between 1 and 5 where 1 indicates a lack of a respectful climate and 5 indicates a highly respectful climate for students.
- **High Expectations:** This factor reflects students’ feelings about their own expectations as well as those of adults in their school and community. Students selected responses between 1 and 5 where 1 indicates a lack of high expectations and 5 indicates a high level of high expectations.
- **School Safety:** This factor reflects students’ feelings about bullies and gangs at school as well as general crime and violence in the community. Students selected responses between 1 and 5 where 1 indicates a low level of school safety and 5 indicates a high level of school safety.
- **Peer Climate:** This factor reflects students’ feelings about how respectful students are to one another and how helpful students are to other students. Students selected responses between 1 and 5 where 1 indicates a more negative peer climate and 5 indicates a very positive peer climate at the school.
- **Caring Adults:** This factor reflects students’ feelings about how close they feel to adults in the school. Students selected responses between 1 and 5 where 1 indicates a lack of caring adult relationships and 5 indicates strong caring adult relationships at the school.
- **Social and Emotional Learning:** This factor reflects students’ ability to think about the consequences of their actions and to empathize with others. Students selected responses between 1 and 5 where 1 indicates that students at the school perceive themselves as having poorer social and emotional learning, and 5 indicates higher levels of social and emotional learning.
- **Community Involvement:** This factor reflects students’ feelings about how supportive and welcoming the school is with parents and the community. Students selected responses between 1 and 5 where 1 indicates a less supportive and welcoming environment and 5 indicates a more supportive and welcoming environment.
- **Overall Climate:** The overall climate score was computed as the mean of three scales: school leadership, high expectations and school safety.
- **Overall Connectedness:** Overall connectedness score was computed as a mean of four scales: respectful climate, peer climate, caring adults and community involvement.

Climate and Connectedness Student Survey - Bowman



Student Survey Mean Response by Factors Related to School Climate - Overall District			
	Bowman Elementary School	Overall Elementary Schools	District
School Leadership	3.59	3.44	3.18
Respectful Climate	3.86	3.70	3.37
High Expectations	4.22	4.23	4.00
School Safety	4.01	3.85	3.66
Peer Climate	3.36	3.12	2.98
Caring Adults	3.94	3.69	3.46
Social and Emotional Skills	3.95	3.91	3.76
Community Involvement	3.83	3.70	3.33
Overall Climate	3.94	3.84	3.62
Overall Connectedness	3.78	3.56	3.29

Range is from a low of 1 to a high of 5

Students were also asked to answer questions related to school danger. The following table provides the responses for those questions:

Student Survey Results of the School Danger Questions - Percent of Students Responding in Each Category					
	0 Times	1-2 Times	3-6 Times	7-12 Times	> 12 Times
Bowman Elementary School					
Under the influence of drugs?	94.74%	1.05%	2.11%	0.00%	2.11%
Under the influence of alcohol?	93.68%	6.32%	0.00%	0.00%	0.00%
Destroy things (vandalism)?	55.91%	26.88%	12.90%	4.30%	0.00%
Get into fights?	31.58%	45.26%	14.74%	4.21%	4.21%
Steal things?	62.11%	26.32%	7.37%	1.05%	3.16%
Threaten or bully?	32.98%	31.91%	23.40%	3.19%	8.51%
Under the influence of inhalants?	77.66%	14.89%	4.26%	0.00%	3.19%
Carry weapons?	89.47%	10.53%	0.00%	0.00%	0.00%
Overall Elementary Schools					
Under the influence of drugs?	91.87%	5.65%	1.22%	0.31%	0.96%
Under the influence of alcohol?	91.42%	6.01%	1.16%	0.51%	0.90%
Destroy things (vandalism)?	46.82%	32.08%	12.45%	3.30%	5.36%
Get into fights?	22.32%	35.75%	22.56%	7.96%	11.41%
Steal things?	49.79%	27.92%	12.01%	4.33%	5.95%
Threaten or bully?	32.34%	28.83%	17.08%	7.78%	13.97%
Under the influence of inhalants?	71.03%	17.07%	6.14%	2.63%	3.12%
Carry weapons?	79.22%	15.35%	3.17%	0.59%	1.68%
District					
Under the influence of drugs?	60.45%	15.05%	9.54%	3.92%	11.04%
Under the influence of alcohol?	63.11%	16.37%	8.90%	4.43%	7.19%
Destroy things (vandalism)?	41.26%	29.47%	15.45%	5.88%	7.94%
Get into fights?	26.40%	35.20%	21.96%	7.11%	9.33%
Steal things?	44.80%	25.68%	13.81%	6.98%	8.74%
Threaten or bully?	32.21%	26.21%	16.68%	9.27%	15.63%
Under the influence of inhalants?	72.79%	14.21%	5.66%	2.48%	4.87%
Carry weapons?	69.45%	19.15%	5.34%	2.01%	4.06%

Student Survey Results of the Mean Factor Score by Ethnicity (Self-Reported)							
	AKNA/AI	AF AM	Hispanic	Asian/NH	White	Other	Multi-Ethnic
Bowman Elementary School							
School Leadership	3.70	2.50	3.75	3.90	3.58	3.31	3.82
Respectful Climate	3.82	2.33	4.21	4.25	3.81	3.98	4.11
High Expectations	4.14	3.21	4.40	4.46	4.16	4.19	4.38
School Safety	4.03	4.10	3.92	3.50	3.98	3.49	4.34
Peer Climate	3.52	3.30	3.65	3.73	3.22	2.97	3.60
Caring Adults	3.89	2.30	4.25	3.60	3.99	3.74	4.06
Social and Emotional Skills	3.93	3.20	4.25	3.77	3.91	3.93	3.97
Community Involvement	3.80	2.71	3.77	3.64	3.89	3.66	3.94
Overall Climate	3.96	3.27	4.09	3.95	3.91	3.66	4.13
Overall Connectedness	3.84	2.66	3.84	4.33	3.76	3.53	3.93
Overall Elementary Schools							
School Leadership	3.56	3.50	3.52	3.55	3.37	3.44	3.42
Respectful Climate	3.75	3.60	3.66	3.72	3.71	3.69	3.63
High Expectations	4.12	4.23	4.23	4.22	4.26	4.19	4.25
School Safety	3.75	3.63	3.73	3.68	4.03	3.66	3.79
Peer Climate	3.12	2.94	3.12	3.18	3.16	3.05	3.05
Caring Adults	3.64	3.73	3.64	3.59	3.74	3.60	3.76
Social and Emotional Skills	3.86	3.84	3.91	3.95	3.93	3.90	3.89
Community Involvement	3.66	3.60	3.67	3.66	3.75	3.66	3.70
Overall Climate	3.81	3.79	3.84	3.81	3.89	3.76	3.82
Overall Connectedness	3.56	3.49	3.51	3.53	3.60	3.49	3.56
District							
School Leadership	3.33	3.14	3.19	3.28	3.14	3.17	3.15
Respectful Climate	3.48	3.18	3.32	3.39	3.39	3.37	3.33
High Expectations	3.98	3.94	3.96	4.02	4.02	4.00	4.01
School Safety	3.60	3.48	3.55	3.47	3.78	3.51	3.62
Peer Climate	3.01	2.85	2.94	3.05	3.00	2.92	2.93
Caring Adults	3.49	3.43	3.37	3.33	3.51	3.42	3.46
Social and Emotional Skills	3.73	3.66	3.73	3.81	3.78	3.75	3.74
Community Involvement	3.37	3.22	3.31	3.29	3.34	3.34	3.31
Overall Climate	3.64	3.52	3.57	3.59	3.65	3.56	3.60
Overall Connectedness	3.33	3.17	3.24	3.26	3.31	3.26	3.27

The response rate is not high enough to provide statistically reliable results for Bowman Elementary School's Staff Survey Results.

Parent/Guardian Survey Response Rate			
	Bowman Elementary School	Overall Elementary Schools	District**
# Surveys Completed	159	3,933	7,415
# Primary Guardians*	485	23,668	48,693
Response Rate	32.78%	16.62%	15.23%

*Number students enrolled as of April 1, 2008 without dual guardians included

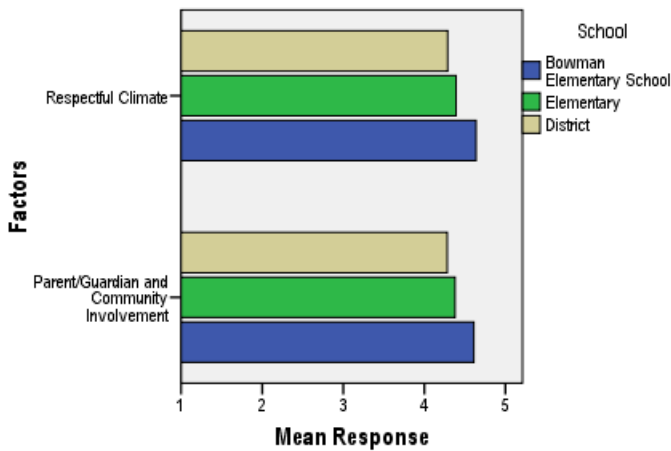
**District data

- 1) does not include KCC responses;
- 2) does include responses without a school designation

Two factors are calculated from the Parent/Guardian Survey. All results other than the factor scores below are reported by individual question: questions in the graphs are condensed phrases from the full question, while questions in the tables are the full question.

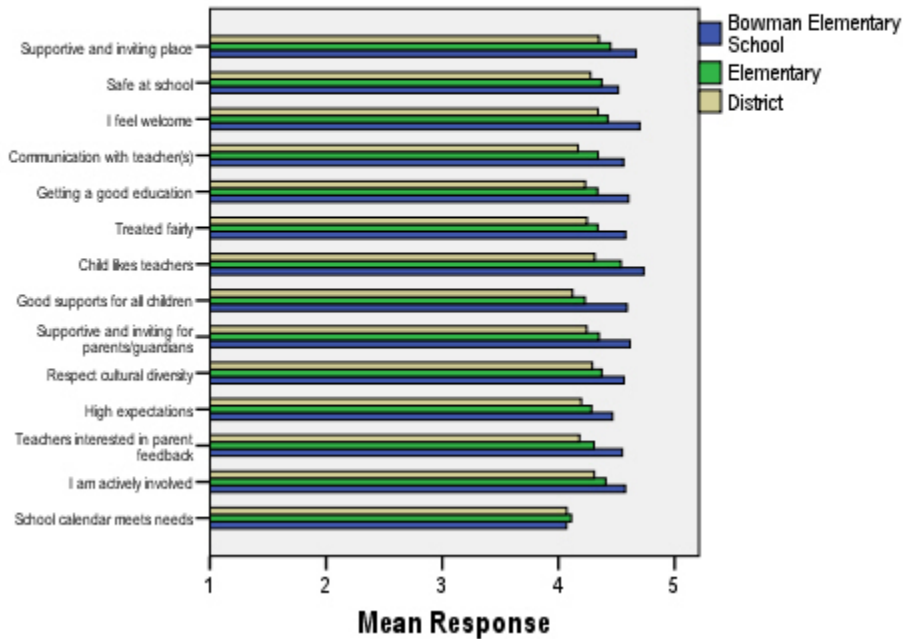
- **Respectful Climate:** This factor is calculated by determining the mean of five questions: 1) My child's school is a supportive and inviting place, 2) I feel welcome at this school, 3) I am satisfied with communication with my child's teacher(s), 4) This school is a supportive and inviting place for parents/guardians and 5) Adults at this school respect cultural diversity.
- **Parent/Guardian and Community Involvement:** This factor is calculated by determining the mean of five questions: 1) I feel welcome at this school, 2) This school is a supportive and inviting place for parents/guardians, 3) Adults at this school respect cultural diversity, 4) Teacher's at my child's school are interested in what I have to say and 5) I feel like I am actively involved in my child's education.

Parent/Guardian Survey Mean Factor Scores (Range is from a low of 1 to a high of 5)



Parent/Guardian Factor Scores			
	Bowman Elementary School	Overall Elementary Schools	District
Respectful Climate	4.64	4.39	4.29
Parent/Guardian and Community Involvement	4.61	4.38	4.28

Climate and Connectedness Parent/Guardian Survey - Bowman



Parent/Guardian Mean Response by Questions Related to School Climate - Overall			
	Bowman Elementary School	Overall Elementary Schools	District
My child's school is a supportive and inviting place	4.67	4.45	4.35
My child is safe at school	4.52	4.37	4.28
I feel welcome at this school	4.70	4.43	4.34
I am satisfied with communication with my child's teacher(s)	4.56	4.34	4.17
My child is getting a good education at this school	4.60	4.34	4.23
My child is treated fairly at school	4.58	4.34	4.25
My child likes his/her teachers	4.74	4.54	4.31
At this school, there are good supports for all children, including children with learning disabilities	4.59	4.23	4.12
This school is a supportive and inviting place for parents/guardians	4.62	4.35	4.24
Adults at this school respect cultural diversity	4.56	4.37	4.29
Adults at this school have high expectations of my child	4.46	4.29	4.20
Teachers at my child's school are interested in what I have to say	4.55	4.31	4.18
I feel like I am actively involved in my child's education	4.58	4.41	4.31
The district's school calendar meets the needs of my child and our family	4.07	4.11	4.07

Range is from a low of 1 to a high of 5

Parent/Guardian Mean Response by Questions Related to School Climate by Ethnicity (Self-Reported)							
Bowman Elementary School	AKNA/AI	AF AM	Hispanic	Asian/NH	White	Other	ME
My child's school is a supportive and inviting place	4.30	4.00	4.50	4.54	4.72	5.00	4.75
My child is safe at school	4.64	4.00	4.33	4.40	4.56	4.00	4.42
I feel welcome at this school	4.70	4.00	4.50	4.47	4.76	5.00	4.58
I am satisfied with communication with my child's teacher(s)	4.50	3.00	4.50	4.53	4.61	4.00	4.42
My child is getting a good education at this school	4.50	2.00	4.33	4.53	4.63	5.00	4.83
My child is treated fairly at school	4.50	4.00	4.00	4.47	4.64	4.00	4.67
My child likes his/her teachers	4.67	4.00	4.33	4.67	4.79	3.00	4.92
At this school, there are good supports for all children, including children with learning disabilities	4.33	3.00	4.50	4.60	4.64	5.00	4.58
This school is a supportive and inviting place for parents/guardians	4.58	4.00	4.17	4.33	4.71	5.00	4.50
Adults at this school respect cultural diversity	4.78	4.00	4.67	4.33	4.56	5.00	4.58
Adults at this school have high expectations of my child	4.45	3.00	4.67	4.40	4.47	5.00	4.58
Teachers at my child's school are interested in what I have to say	4.33	3.00	4.33	4.27	4.62	5.00	4.82
I feel like I am actively involved in my child's education	4.17	4.00	4.33	4.27	4.70	5.00	4.50
The district's school calendar meets the needs of my child and our family	3.83	3.00	4.00	4.53	4.07	5.00	4.00
Overall Elementary Schools							
My child's school is a supportive and inviting place	4.47	4.36	4.51	4.44	4.47	4.26	4.46
My child is safe at school	4.42	4.40	4.42	4.36	4.38	4.23	4.35
I feel welcome at this school	4.37	4.38	4.47	4.48	4.44	4.27	4.49
I am satisfied with communication with my child's teacher(s)	4.40	4.30	4.45	4.36	4.35	4.19	4.35
My child is getting a good education at this school	4.40	4.28	4.44	4.40	4.33	4.04	4.38
My child is treated fairly at school	4.34	4.15	4.37	4.32	4.38	4.14	4.33
My child likes his/her teachers	4.52	4.41	4.47	4.53	4.57	4.49	4.55
At this school, there are good supports for all children, including children with learning disabilities	4.32	4.06	4.31	4.31	4.22	4.05	4.31
This school is a supportive and inviting place for parents/guardians	4.31	4.22	4.42	4.38	4.36	4.11	4.44
Adults at this school respect cultural diversity	4.28	4.25	4.38	4.27	4.43	4.19	4.39
Adults at this school have high expectations of my child	4.30	4.26	4.36	4.27	4.31	3.95	4.28
Teachers at my child's school are interested in what I have to say	4.35	4.25	4.39	4.24	4.33	4.16	4.31
I feel like I am actively involved in my child's education	4.38	4.48	4.40	4.31	4.45	4.20	4.40
The district's school calendar meets the needs of my child and our family	4.22	4.25	4.20	4.19	4.10	3.62	4.08
District							
My child's school is a supportive and inviting place	4.37	4.20	4.41	4.37	4.37	4.20	4.37
My child is safe at school	4.31	4.18	4.29	4.31	4.29	4.11	4.30
I feel welcome at this school	4.31	4.18	4.38	4.36	4.36	4.23	4.40
I am satisfied with communication with my child's teacher(s)	4.21	3.99	4.32	4.23	4.16	4.03	4.20
My child is getting a good education at this school	4.28	4.09	4.33	4.31	4.23	4.03	4.26
My child is treated fairly at school	4.21	3.94	4.30	4.24	4.29	4.08	4.24
My child likes his/her teachers	4.33	4.06	4.31	4.35	4.33	4.20	4.34
At this school, there are good supports for all children, including children with learning disabilities	4.19	3.90	4.24	4.23	4.11	3.97	4.18
This school is a supportive and inviting place for parents/guardians	4.21	4.05	4.31	4.29	4.26	4.05	4.31
Adults at this school respect cultural diversity	4.20	4.02	4.29	4.22	4.34	4.17	4.31
Adults at this school have high expectations of my child	4.24	4.05	4.26	4.21	4.21	3.94	4.20
Teachers at my child's school are interested in what I have to say	4.22	4.04	4.28	4.17	4.20	4.05	4.19
I feel like I am actively involved in my child's education	4.29	4.36	4.37	4.24	4.33	4.20	4.30
The district's school calendar meets the needs of my child and our family	4.19	4.18	4.21	4.16	4.06	3.66	4.02

Range is from a low of 1 to a high of 5