

### Central Middle School of Science Overview

#### Statement of Program

Central Middle School of Science is an outstanding neighborhood and lottery school with a diverse student population. Situated in downtown Anchorage, the school community focuses on science integration in all curricular areas with high academic standards for all children. Students from Central are academically competitive and for the last two years have won the state spelling bee and competed nationally. Central is data-driven and has a dedicated staff working to ensure that students are instructed and challenged at their individual ability levels.

With a student population of about 600, Central has strong business partnerships and belongs to the Alaska Educational Innovations Network, which affords professional development opportunities for teachers to discover and share best practices for student achievement. Central also has a Design Team that collaborates with the community to keep our school focused on the future with science and technology. We have high expectations of our staff and students and welcome parents to actively participate in the journey their child is taking through middle school.

From the School Report Card

School Goals	
Goal	Level of Achievement
The number of students with disabilities rated not proficient on the state language arts assessment will decrease by 10 percent.	Partially Attained
The number of students interested in applying for a spot in the school lottery will increase by 10 percent. This will be accomplished through promotion of positive customer service activities.	Attained

From the School Report Card

Budget*	
2006-07 Actual Expenditures	\$3,941,368
2007-08 Revised Budgeted Amount	\$4,618,258
2008-09 Proposed Budget	\$4,975,228

\*Dollars budgeted or expended are general fund only  
From IFAS

Central Middle School of Science Characteristics			
	School	District	Source of Information
Membership	646	48,858	Fall OASIS
Capacity	105.74%	N/A	2008-18 ASD Capital Improvement Plan
Attendance Rate	93.07%	92.83%	NCLB Summer Data Collection
Retention Rate K-8	0.00%	0.60%	SMS and NCLB Summer Data Collection
Transiency Rate	28.07%	26.07%	NCLB Summer Data Collection
Economically Disadvantaged	332	17,717	Fall OASIS
Average Weekly Volunteer Hours	30	4,660	Department of Education Report Card Report
Dropout Rate	1.88%	3.93%	NCLB Summer Data Collection & Fall Oasis
Students Taking the Alternate Assessment	0	228	SMS
Change in Enrollment	22.12%	-0.76%	Fall Oasis

Teacher Qualification				
Number of Teachers	Percent Fully Licensed	Percent With Advanced Degrees	Number Nationally Board Certified	Percent of Classes Taught by "Highly Qualified Teachers"
44	100.00%	59.09%	0	90.96%

Central Middle School of Science Business Partnerships
Anchorage Convention and Visitors Bureau, Hilton Anchorage Hotel, REI, Fort Richardson Youth Services, Aurora Vending, Blockbuster Video, Key Bank, Kids' Kitchen, Learning for Life

From the School Report Card

Ethnicity Report							
African-American/Black	Alaska Native/American Indian	Asian	Native Hawaiian/Other Pacific Islander	White	Hispanic	Multi-Ethnic	Total
82	56	60	28	277	80	63	646

From Fall Oasis

Full Academic Year		
Students Enrolled	Students Enrolled for FAY	Percent FAY
654	573	87.61%

From participation file (Grades 3-10)

Total Dropout Rate – Central Middle School of Science								
	African-American/Black	Alaska Native/American Indian	Asian	Native Hawaiian/Other Pacific Islander	White	Hispanic	Multi-Ethnic	Total
Enrollment	81	54	59	28	275	78	62	637
Final Dropouts	*	3	*	*	5	*	*	12
% of Dropouts	1.23%	5.56%	1.69%	0.00%	1.82%	0.00%	3.23%	1.88%

From NCLB Summer Data Collection and Fall OASIS

\* Results cannot be published without releasing personally identifiable information based upon the EED reporting protocol

Central Middle School of Science  
2007-08 Adequate Yearly Progress  
Status Report

Does Not Meet AYP  
Level 5

AMO For Language Arts: 77.18%  
AMO For Mathematics: 66.09%

Group	Participation Rate				"FAY" (D) Tested & Enrolled "FAY"	Language Arts Performance				Mathematics Performance			
	(A) Number Enrolled	(B) Number Tested	Participation Rate (%)	(C) Participation Rate Met		(E) Proficient on LA	(F) Percent Proficient on LA	(G) LA Target	(H) Met AMO for LA	(I) Proficient on Mathematics	(J) Percent Proficient in Mathematics	(K) Mathematics Target	(L) Met AMO for Mathematics
All Students	654	651	99.5%	Yes	571	461	80.7%	73.1%	Yes	387	67.8%	61.5%	Yes
AF AM	89	89	100%	Yes	74	56	75.7%	65.8%	Yes	38	51.4%	53.3%	No
AKNA/AI	55	54	98.2%	Yes	46	30	65.2%	62.8%	Yes	24	52.2%	49.8%	Yes
Asian/NH/OPI	97	97	100%	Yes	80	52	65%	66.2%	No	46	57.5%	53.8%	Yes
White	269	267	99.3%	Yes	250	229	91.6%	71%	Yes	201	80.4%	59.1%	Yes
Hispanic	75	75	100%	Yes	67	51	76.1%	65.2%	Yes	40	59.7%	52.6%	Yes
ME	69	69	100%	Yes	54	43	79.6%	63.9%	Yes	38	70.4%	51.1%	Yes
EDS	341	339	99.4%	Yes	291	206	70.8%	71.4%	No	162	55.7%	59.6%	No
SWD	87	87	100%	Yes	74	32	43.2%	65.8%	Yes-SH	20	27%	53.3%	No
LEP	128	128	100%	Yes	97	56	57.7%	67.3%	No	51	52.6%	54.9%	No

Attendance Rate: Met

93.1% (Threshold is 85%)

N/A is used to indicate:

- (1) Subgroups with 20 or fewer students enrolled on the first day of testing shall not be included in participation rate calculation.
- (2) Subgroups with 25 or fewer students enrolled for the "full academic year" shall not have the performance score computed.

\* For the groups where the number enrolled is less than or equal to 40, participation is met when no more than two miss the test. Groups can also meet this target using the average of the past two or three years.

\*\* When a group achieves a "Yes" without meeting the listed target, it has done so using either the 99% confidence interval or Safe Harbor.

\*\*\* The results cannot be published without releasing personally identifiable information based upon the EED reporting protocol.

This document was prepared by the ASD Assessment and Evaluation Department.

7/10/2008

Central Middle School of Science  
2007-08 Adequate Yearly Progress  
Growth Report

The AYP growth reports are generated by the Alaska State Department of Education and Early Development. The reports can be found online at: [http://www.asdk12.org/depts/assess\\_eval/AYP/State\\_AS\\_D\\_AYG\\_0708.pdf](http://www.asdk12.org/depts/assess_eval/AYP/State_AS_D_AYG_0708.pdf)

SBA Proficiency Comparison by Grade for Central Middle School of Science																
	Reading Percent Proficient				Writing Percent Proficient				Mathematics Percent Proficient				Science* Percent Proficient			
	04-05	05-06	06-07	07-08	04-05	05-06	06-07	07-08	04-05	05-06	06-07	07-08	04-05	05-06	06-07	07-08
All Students	80.06%	81.60%	86.69%	83.51%	76.74%	75.20%	74.95%	71.89%	68.37%	63.79%	73.23%	65.12%	N/A	N/A	N/A	48.99%
Grade 7	78.92%	77.61%	86.50%	82.61%	77.05%	71.47%	76.53%	72.65%	66.10%	59.33%	75.09%	67.71%	N/A	N/A	N/A	N/A
Grade 8	81.27%	85.81%	86.94%	84.56%	76.42%	79.10%	73.01%	71.00%	70.78%	68.49%	70.93%	62.08%	N/A	N/A	N/A	48.99%

\* 2007-08 was the first year Science was administered for grades 4, 8 and 10 on the SBA.

SBA Proficient & Not Proficient by NCLB Groups for Central Middle School of Science								
	Reading		Writing		Mathematics		Science	
	Percent Proficient	Percent Not Proficient	Percent Proficient	Percent Not Proficient	Percent Proficient	Percent Not Proficient	Percent Proficient	Percent Not Proficient
All Students	83.51%	16.49%	71.89%	28.11%	65.12%	34.88%	48.99%	51.01%
AF AM	80.68%	19.32%	65.17%	34.83%	50.00%	50.00%	31.11%	68.89%
AKNA/AI	78.43%	21.57%	50.00%	50.00%	50.00%	50.00%	21.43%	78.57%
Asian	82.54%	17.46%	67.19%	32.81%	73.44%	26.56%	33.33%	66.67%
NH/OPI	44.12%	55.88%	32.35%	67.65%	17.65%	82.35%	80% or fewer	20% or more
White	92.08%	7.92%	86.84%	13.16%	80.15%	19.85%	72.17%	27.83%
Hispanic	78.67%	21.33%	66.67%	33.33%	57.33%	42.67%	41.38%	58.62%
Multi-Ethnic	83.58%	16.42%	69.57%	30.43%	61.76%	38.24%	54.29%	45.71%
EDS	74.10%	25.90%	59.76%	40.24%	51.94%	48.06%	36.25%	63.75%
Non-EDS	93.57%	6.43%	84.98%	15.02%	79.23%	20.77%	63.77%	36.23%
SWD	43.28%	56.72%	27.54%	72.46%	23.88%	76.12%	90% or fewer	10% or more
Non-SWD	88.19%	11.81%	77.15%	22.85%	69.88%	30.12%	52.75%	47.25%
LEP	48.81%	51.19%	25.88%	74.12%	25.88%	74.12%	95% or fewer	5% or more
Not LEP	88.73%	11.27%	78.80%	21.20%	71.05%	28.95%	55.81%	44.19%
Migrant	80.77%	19.23%	50.00%	50.00%	42.86%	57.14%	31.25%	68.75%
Not Migrant	83.63%	16.37%	72.87%	27.13%	66.13%	33.87%	50.00%	50.00%
Female	87.33%	12.67%	76.32%	23.68%	64.03%	35.97%	44.68%	55.32%
Male	80.17%	19.83%	68.01%	31.99%	66.09%	33.91%	52.87%	47.13%

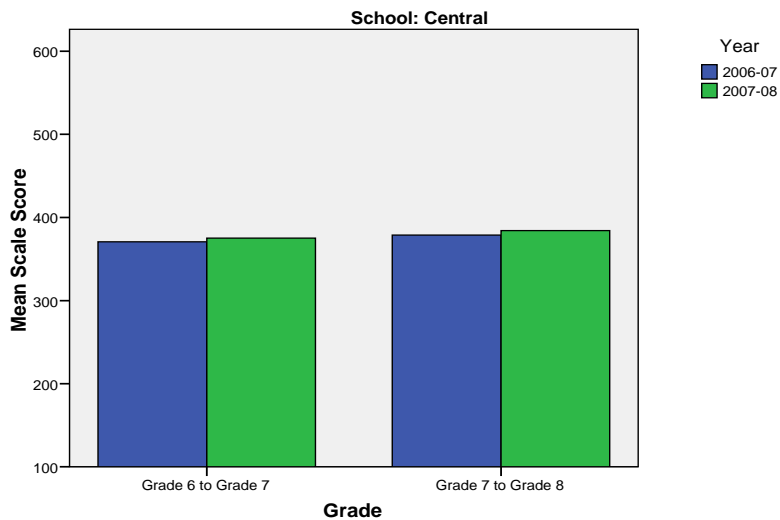
SBA Mean Scale Score Comparison by NCLB Groups for Central Middle School of Science								
	Reading		Writing		Mathematics		Science**	
	06-07	07-08	06-07	07-08	06-07	07-08	06-07	07-08
All Students	382.78	374.31	348.20	345.51	344.99	336.33	N/A	308.37
AF AM	368.09	351.56	340.05	326.58	325.58	301.85	N/A	276.80
AKNA/AI	336.67	339.14	297.41	305.07	319.09	310.81	N/A	257.64
Asian	364.47*	363.08	334.36*	333.48	341.96*	344.84	N/A	273.83
NH/OPI	N/A	298.29	N/A	278.24	N/A	265.18	N/A	221.25
White	409.43	406.18	372.83	377.18	364.72	365.48	N/A	361.22
Hispanic	352.15	353.56	322.32	326.56	324.47	323.59	N/A	283.45
ME	361.35	377.25	325.32	344.41	322.09	327.34	N/A	305.97
EDS	357.80	346.88	323.59	319.13	324.32	312.48	N/A	277.94
Non-EDS	406.96	403.59	372.51	374.00	365.50	361.85	N/A	343.64
SWD	302.25	303.49	275.00	274.84	286.68	271.99	N/A	217.80
Non-SWD	389.08	382.55	354.52	353.89	349.97	343.75	N/A	316.66
LEP	338.55	297.44	307.03	271.42	316.71	273.56	N/A	217.35
Not LEP	389.92	385.86	355.07	356.64	349.89	345.80	N/A	322.48
Migrant	329.00	344.54	301.91	310.32	315.13	306.18	N/A	282.63
Not Migrant	385.39	375.56	350.41	347.09	346.41	337.69	N/A	309.83
Female	388.32	377.68	359.56	356.63	341.10	332.75	N/A	300.38
Male	378.32	371.36	339.22	335.78	348.08	339.47	N/A	315.55

\* Prior to 2007-08 the Asian category includes Native Hawaiian/Other Pacific Islander. In 2007-08 Native Hawaiian/Other Pacific Islander is a separate ethnic category.

\*\* 2007-08 was the first year Science was administered for grades 4, 8 and 10 on the SBA.

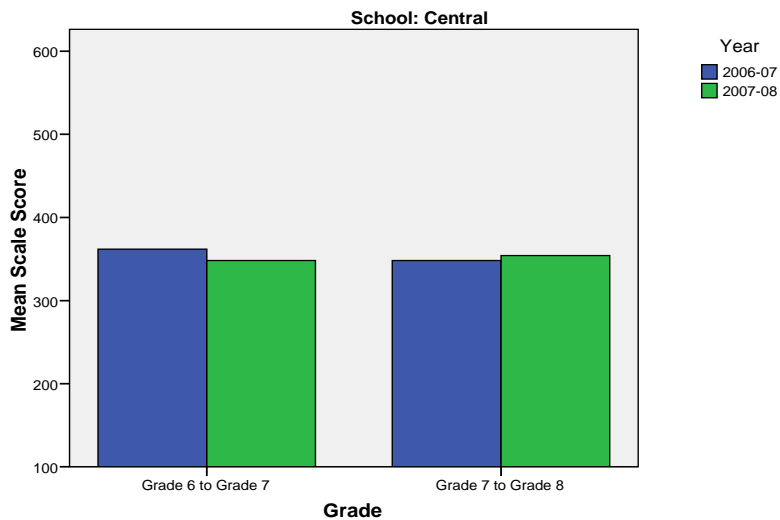
Central Middle School of Science SBA Change Average Scale Score by NCLB Groups: Reading						
	Average Scale Score of Students Tested in District Both Years			Average Scale Score of Students Tested in District Both Years		
	Grade 6-in 06-07	Grade 7 in 07-08	Difference	Grade 7-in 06-07	Grade 8 in 07-08	Difference
All Students	370.66	375.07	4.41	378.85	384.19	5.34
African-American/Black	342.32	336.23	-6.10	352.29	365.76	13.47
Alaska Native/American Indian	355.85	361.40	5.55	314.04	320.17	6.13
Asian	346.07	367.77	21.70	352.05	375.70	23.65
Native Hawaiian/Other Pacific Islander	294.40	292.00	-2.40	332.64	329.64	-3.00
White	401.25	408.43	7.18	416.33	414.37	-1.96
Hispanic	346.40	347.75	1.35	360.64	369.36	8.73
Multi-Ethnic (2 or More Races)	378.80	369.68	-9.12	386.62	394.03	7.41
Economically Disadvantaged	345.23	341.51	-3.72	352.52	361.31	8.79
Non-Economically Disadvantaged	397.55	410.56	13.01	407.66	409.22	1.56
Students with Disabilities	313.24	313.74	0.50	292.50	298.35	5.85
Students without Disabilities	379.46	384.47	5.01	386.53	391.82	5.29
LEP	297.25	298.67	1.42	278.43	296.78	18.35
Not LEP	381.23	386.07	4.84	389.26	393.25	3.99
Migrant	324.29	331.57	7.29	346.88	357.88	11.00
Not Migrant	371.82	376.16	4.34	381.09	386.03	4.94
Female	370.91	379.04	8.13	380.07	386.37	6.30
Male	370.46	371.85	1.39	377.78	382.27	4.49

Change in Mean Scale Score in SBA Reading by Grade Between 2006-07 and 2007-08



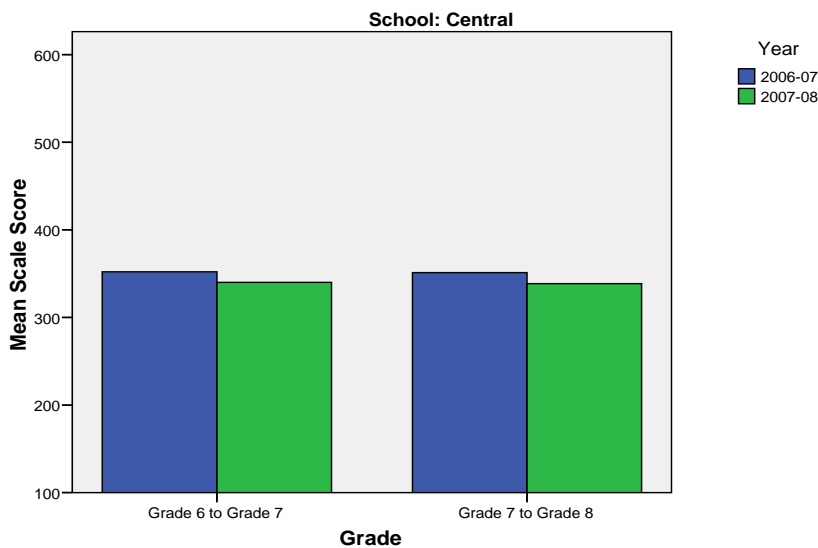
Central Middle School of Science SBA Change Average Scale Score by NCLB Groups: Writing						
	Average Scale Score of Students Tested in District Both Years			Average Scale Score of Students Tested in District Both Years		
	Grade 6-in 06-07	Grade 7 in 07-08	Difference	Grade 7-in 06-07	Grade 8 in 07-08	Difference
All Students	361.97	348.12	-13.85	348.23	354.21	5.98
African-American/Black	344.56	323.78	-20.78	328.18	336.97	8.79
Alaska Native/American Indian	334.59	333.59	-1.00	288.28	281.84	-6.44
Asian	340.48	343.10	2.61	334.29	334.48	0.19
Native Hawaiian/Other Pacific Islander	255.80	274.47	18.67	322.91	328.64	5.73
White	396.79	374.42	-22.37	380.54	387.61	7.07
Hispanic	334.83	325.35	-9.47	337.27	339.86	2.59
Multi-Ethnic (2 or More Races)	366.26	346.44	-19.81	340.29	356.64	16.36
Economically Disadvantaged	331.43	321.97	-9.47	325.78	328.87	3.09
Non-Economically Disadvantaged	394.88	376.30	-18.57	372.78	381.91	9.13
Students with Disabilities	280.56	290.46	9.90	272.50	256.75	-15.75
Students without Disabilities	375.21	357.50	-17.71	354.90	362.79	7.89
LEP	260.37	278.32	17.95	273.13	268.25	-4.88
Not LEP	377.11	358.52	-18.59	356.31	363.46	7.14
Migrant	280.56	292.89	12.33	313.63	326.38	12.75
Not Migrant	364.55	349.87	-14.68	350.63	356.13	5.51
Female	372.74	363.02	-9.72	358.38	361.19	2.81
Male	353.13	335.89	-17.24	339.24	348.02	8.78

Change in Mean Scale Score in SBA Writing by Grade between 2006-07 and 2007-08



Central Middle School of Science SBA Change Average Scale Score by NCLB Groups: Mathematics						
	Average Scale Score of Students Tested in District Both Years			Average Scale Score of Students Tested in District Both Years		
	Grade 6-in 06-07	Grade 7 in 07-08	Difference	Grade 7-in 06-07	Grade 8 in 07-08	Difference
All Students	352.07	339.98	-12.09	351.10	338.55	-12.56
African-American/Black	323.35	302.06	-21.29	321.14	300.43	-20.70
Alaska Native/American Indian	316.13	325.71	9.58	310.40	289.08	-21.32
Asian	357.25	351.25	-6.00	358.90	339.38	-19.52
Native Hawaiian/Other Pacific Islander	274.53	265.80	-8.73	286.38	278.15	-8.23
White	381.71	368.26	-13.45	381.95	371.48	-10.47
Hispanic	332.24	323.05	-9.20	328.88	322.21	-6.67
Multi-Ethnic (2 or More Races)	345.70	317.78	-27.93	357.93	354.54	-3.39
Economically Disadvantaged	327.01	313.78	-13.23	333.21	317.12	-16.09
Non-Economically Disadvantaged	379.62	368.78	-10.84	371.12	362.52	-8.60
Students with Disabilities	287.83	283.46	-4.37	282.74	261.47	-21.26
Students without Disabilities	362.40	349.07	-13.33	356.73	344.89	-11.84
LEP	284.78	276.50	-8.27	272.30	260.19	-12.11
Not LEP	362.59	349.90	-12.69	360.65	348.04	-12.61
Migrant	281.73	277.27	-4.45	329.31	327.75	-1.56
Not Migrant	354.79	342.40	-12.39	352.59	339.29	-13.31
Female	349.11	340.77	-8.34	347.82	328.72	-19.10
Male	354.55	339.32	-15.24	353.99	347.20	-6.80

**Change in Mean Scale Score in SBA Mathematics by Grade between 2006-07 and 2007-08**



Reading: SBA Results Compared for Central Middle School of Science, District and State Grades 7 and 8															
	% Advanced Proficient			% Proficient			% Below Proficient			% Far Below Proficient			% Tested		
	School	District	State	School	District	State	School	District	State	School	District	State	School	District	State
All Students	34.99%	36.46%	34.57%	48.52%	48.69%	48.62%	11.51%	11.55%	12.88%	4.98%	3.29%	3.93%	98.32%	97.85%	97.86%
AF AM	19.32%	19.00%	20.66%	61.36%	58.30%	57.93%	10.23%	17.03%	15.72%	9.09%	5.68%	5.69%	98.88%	97.86%	98.38%
AKNA/AI	13.73%	19.97%	15.19%	64.71%	52.76%	51.58%	13.73%	20.94%	25.14%	7.84%	6.33%	8.08%	92.73%	95.36%	96.93%
Asian	23.81%	28.61%	27.53%	58.73%	54.01%	53.96%	*	13.72%	14.90%	*	3.65%	3.60%	98.44%	97.58%	97.49%
NH/OPI	*	8.40%	N/A	*	53.78%	N/A	38.24%	28.57%	N/A	17.65%	9.24%	N/A	100.00%	98.76%	N/A
White	52.45%	47.51%	45.02%	39.62%	43.41%	45.22%	6.04%	7.25%	7.53%	1.89%	1.83%	2.22%	98.51%	98.46%	98.29%
Hispanic	24.00%	27.54%	28.38%	54.67%	55.39%	54.32%	14.67%	13.17%	13.31%	6.67%	3.89%	3.98%	100.00%	97.80%	98.00%
ME	40.30%	30.61%	32.24%	43.28%	52.80%	52.18%	11.94%	12.80%	12.02%	4.48%	3.78%	3.56%	97.10%	97.04%	97.23%
EDS	20.78%	18.54%	20.30%	53.31%	54.95%	51.97%	17.47%	20.04%	20.88%	8.43%	6.47%	6.84%	97.36%	96.31%	95.86%
Not EDS	50.16%	46.21%	43.42%	43.41%	45.29%	46.55%	5.14%	6.93%	7.91%	1.29%	1.57%	2.12%	99.36%	98.71%	99.14%
SWD	10.45%	5.65%	5.39%	32.84%	39.65%	39.16%	31.34%	37.65%	36.10%	25.37%	17.06%	19.35%	97.10%	90.81%	92.10%
Non SWD	37.85%	40.59%	38.46%	50.35%	49.91%	49.89%	9.20%	8.05%	9.78%	2.60%	1.45%	1.87%	98.46%	98.88%	98.68%
LEP	*	4.34%	3.40%	*	52.25%	45.68%	34.52%	31.74%	37.23%	16.67%	11.68%	13.69%	97.67%	95.57%	96.43%
Not LEP	39.89%	39.75%	38.87%	48.84%	48.33%	49.03%	8.05%	9.49%	9.52%	3.22%	2.44%	2.58%	98.42%	98.09%	98.06%
Migrant	15.38%	23.05%	18.13%	65.38%	50.51%	49.19%	*	20.34%	25.53%	*	6.10%	7.15%	92.86%	98.33%	98.16%
Not Migrant	35.82%	37.03%	35.71%	47.81%	48.62%	48.58%	11.35%	11.18%	12.00%	5.02%	3.17%	3.71%	98.56%	97.83%	97.84%
Female	34.33%	39.92%	38.60%	53.00%	49.13%	48.79%	8.67%	8.92%	10.13%	4.00%	2.04%	2.48%	98.04%	98.14%	98.03%
Male	35.57%	33.21%	30.74%	44.61%	48.29%	48.47%	13.99%	14.03%	15.49%	5.83%	4.48%	5.30%	98.56%	97.58%	97.70%

\* Results cannot be published without releasing personally identifiable information based upon the EED reporting protocol

Writing: SBA Results Compared for Central Middle School of Science, District and State Grades 7 and 8															
	% Advanced Proficient			% Proficient			% Below Proficient			% Far Below Proficient			% Tested		
	School	District	State	School	District	State	School	District	State	School	District	State	School	District	State
All Students	12.44%	11.86%	10.41%	59.45%	62.70%	61.09%	20.58%	18.67%	20.92%	7.53%	6.77%	7.58%	99.54%	97.97%	97.77%
AF AM	4.49%	4.39%	4.97%	60.67%	57.68%	58.58%	28.09%	28.29%	27.26%	6.74%	9.65%	9.19%	100.00%	97.44%	97.79%
AKNA/AI	7.41%	3.72%	2.85%	42.59%	50.89%	46.57%	33.33%	31.02%	34.58%	16.67%	14.38%	15.99%	98.18%	95.82%	97.09%
Asian	6.25%	9.18%	8.28%	60.94%	62.10%	62.39%	*	21.87%	22.29%	*	6.85%	7.04%	100.00%	97.72%	97.64%
NH/OPI	*	*	N/A	*	*	N/A	32.35%	33.47%	N/A	35.29%	16.74%	N/A	100.00%	99.17%	N/A
White	19.92%	16.21%	14.37%	66.92%	66.42%	66.50%	11.28%	13.35%	14.89%	1.88%	4.01%	4.25%	98.88%	98.59%	98.10%
Hispanic	9.33%	10.06%	8.18%	57.33%	61.71%	63.88%	24.00%	19.97%	21.03%	9.33%	8.26%	6.91%	100.00%	97.51%	97.81%
ME	11.59%	9.36%	9.88%	57.97%	62.82%	62.78%	17.39%	20.05%	20.12%	13.04%	7.78%	7.21%	100.00%	97.40%	97.23%
EDS	5.92%	3.77%	4.20%	53.85%	54.85%	53.45%	27.81%	28.17%	29.69%	12.43%	13.20%	12.66%	99.12%	96.69%	95.78%
Not EDS	19.49%	16.27%	14.27%	65.50%	66.98%	65.82%	12.78%	13.48%	15.47%	2.24%	3.26%	4.43%	100.00%	98.69%	99.05%
SWD	4.35%	0.94%	0.72%	23.19%	26.86%	25.75%	47.83%	42.99%	44.66%	24.64%	29.21%	28.86%	100.00%	90.71%	91.85%
Non SWD	13.40%	13.31%	11.70%	63.75%	67.49%	65.79%	17.35%	15.42%	17.76%	5.50%	3.78%	4.75%	99.49%	99.03%	98.62%
LEP	*	1.05%	0.57%	*	38.02%	31.72%	50.59%	41.62%	45.08%	23.53%	19.31%	22.63%	98.84%	95.57%	96.60%
Not LEP	14.13%	12.96%	11.78%	64.66%	65.22%	65.15%	16.08%	16.33%	17.58%	5.12%	5.49%	5.50%	99.65%	98.23%	97.94%
Migrant	*	4.38%	3.57%	*	55.56%	48.98%	35.71%	27.95%	33.31%	14.29%	12.12%	14.13%	100.00%	99.00%	98.24%
Not Migrant	12.68%	12.18%	10.89%	60.19%	63.00%	61.93%	19.90%	18.27%	20.06%	7.22%	6.55%	7.12%	99.52%	97.93%	97.74%
Female	16.45%	16.61%	14.82%	59.87%	65.43%	64.82%	19.41%	14.21%	16.01%	4.28%	3.75%	4.35%	99.35%	98.42%	98.00%
Male	8.93%	7.37%	6.23%	59.08%	60.12%	57.53%	21.61%	22.88%	25.59%	10.37%	9.63%	10.65%	99.71%	97.55%	97.56%

\* Results cannot be published without releasing personally identifiable information based upon the EED reporting protocol

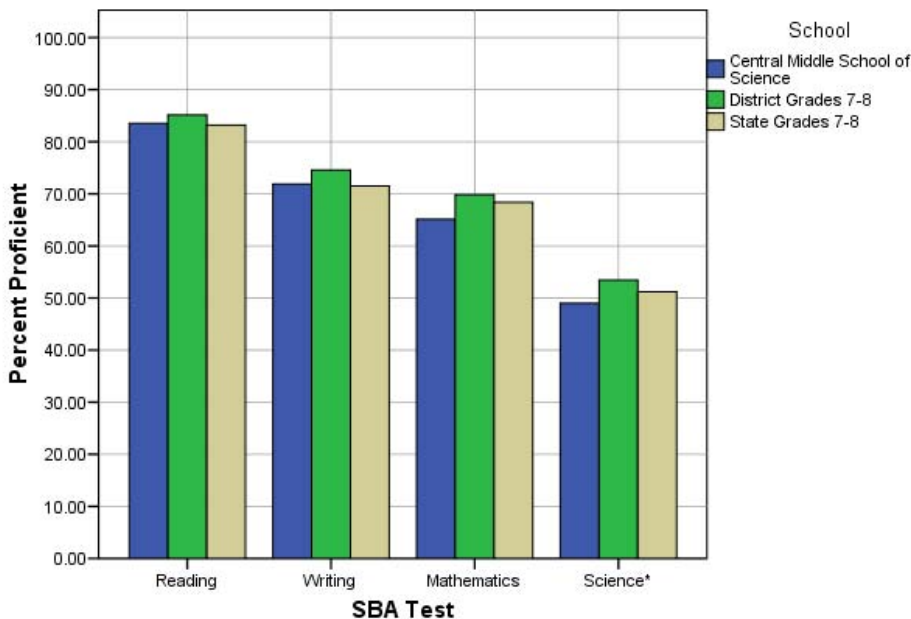
Mathematics: SBA Results Compared for Central Middle School of Science, District and State Grades 7 and 8															
	% Advanced Proficient			% Proficient			% Below Proficient			% Far Below Proficient			% Tested		
	School	District	State	School	District	State	School	District	State	School	District	State	School	District	State
All Students	27.47%	31.33%	29.02%	37.65%	38.49%	39.36%	18.98%	17.87%	18.72%	15.90%	12.31%	12.90%	99.08%	97.81%	97.73%
AF AM	9.30%	12.58%	14.65%	40.70%	35.54%	36.40%	26.74%	28.26%	26.44%	23.26%	23.62%	22.51%	96.63%	96.79%	97.50%
AKNA/AI	18.52%	17.89%	14.46%	31.48%	34.80%	35.46%	22.22%	25.04%	26.44%	27.78%	22.28%	23.64%	98.18%	95.20%	96.77%
Asian	26.56%	29.58%	27.87%	46.88%	40.26%	40.20%	17.19%	18.76%	18.72%	9.38%	11.40%	13.21%	100.00%	98.72%	98.64%
NH/OPI	*	6.67%	N/A	*	35.42%	N/A	23.53%	26.67%	N/A	58.82%	31.25%	N/A	100.00%	99.59%	N/A
White	40.07%	40.28%	36.66%	40.07%	38.52%	40.75%	14.61%	13.95%	14.82%	5.24%	7.25%	7.77%	99.26%	98.19%	98.00%
Hispanic	20.00%	22.65%	22.24%	37.33%	40.98%	41.68%	24.00%	21.61%	22.44%	18.67%	14.75%	13.64%	100.00%	98.24%	98.48%
ME	27.94%	27.20%	28.57%	33.82%	40.12%	39.73%	17.65%	18.05%	18.13%	20.59%	14.63%	13.57%	98.55%	97.04%	96.97%
EDS	16.42%	15.55%	16.77%	35.52%	37.90%	38.20%	24.78%	24.48%	24.34%	23.28%	22.08%	20.69%	98.24%	96.54%	95.81%
Not EDS	39.30%	39.96%	36.63%	39.94%	38.82%	40.08%	12.78%	14.26%	15.23%	7.99%	6.97%	8.06%	100.00%	98.52%	98.96%
SWD	8.96%	5.81%	5.39%	14.93%	20.26%	22.07%	28.36%	26.66%	28.40%	47.76%	47.27%	44.13%	97.10%	90.17%	92.02%
Non SWD	29.60%	34.73%	32.17%	40.28%	40.92%	41.67%	17.90%	16.70%	17.43%	12.22%	7.66%	8.73%	99.32%	98.92%	98.54%
LEP	4.71%	5.73%	4.98%	21.18%	30.10%	27.54%	30.59%	32.01%	32.96%	43.53%	32.16%	34.52%	98.84%	97.42%	97.06%
Not LEP	30.91%	34.01%	32.36%	40.14%	39.37%	41.00%	17.23%	16.39%	16.74%	11.72%	10.23%	9.89%	99.12%	97.85%	97.82%
Migrant	14.29%	17.29%	17.58%	28.57%	40.68%	36.29%	32.14%	22.37%	25.14%	25.00%	19.66%	20.99%	100.00%	98.33%	98.08%
Not Migrant	28.06%	31.93%	29.81%	38.06%	38.40%	39.57%	18.39%	17.68%	18.28%	15.48%	11.99%	12.34%	99.04%	97.79%	97.70%
Female	24.09%	30.98%	28.90%	39.93%	39.19%	40.85%	20.79%	18.89%	19.04%	15.18%	10.94%	11.22%	99.02%	98.31%	98.00%
Male	30.43%	31.67%	29.13%	35.65%	37.83%	37.94%	17.39%	16.90%	18.42%	16.52%	13.60%	14.50%	99.14%	97.34%	97.46%

\* Results cannot be published without releasing personally identifiable information based upon the EED reporting protocol

Results Compared for Central Middle School of Science, District and State Grade 8															
	% Advanced Proficient			% Proficient			% Below Proficient			% Far Below Proficient			% Tested		
	School	District	State	School	District	State	School	District	State	School	District	State	School	District	State
All Students	31.88%	27.02%	25.2%	17.11%	26.43%	26.0%	19.13%	20.65%	21.3%	31.88%	25.90%	27.4%	99.00%	96.39%	94.91%
AF AM	17.78%	10.34%	10.7%	13.33%	19.40%	21.1%	28.89%	25.43%	26.1%	40.00%	44.83%	42.1%	100.00%	96.27%	94.36%
AKNA/AI	10.71%	10.33%	8.9%	10.71%	25.84%	18.0%	25.00%	21.88%	23.7%	53.57%	41.95%	49.4%	100.00%	93.47%	93.67%
Asian	13.33%	16.86%	16.1%	20.00%	22.00%	23.2%	26.67%	26.57%	25.5%	40.00%	34.57%	35.2%	100.00%	97.77%	97.29%
NH/OPI	*	6.42%	N/A	*	11.93%	N/A	*	17.43%	N/A	81.25%	64.22%	N/A	100.00%	99.09%	N/A
White	54.78%	38.15%	35.1%	17.39%	29.71%	30.0%	16.52%	17.80%	19.0%	11.30%	14.34%	15.9%	97.46%	96.75%	95.14%
Hispanic	13.79%	16.57%	15.8%	27.59%	25.60%	27.5%	20.69%	27.11%	26.3%	37.93%	30.72%	30.4%	100.00%	96.79%	95.92%
ME	34.29%	21.93%	23.0%	20.00%	24.28%	24.2%	8.57%	20.37%	20.9%	37.14%	33.42%	31.9%	100.00%	95.04%	93.83%
EDS	15.63%	10.38%	12.3%	20.63%	21.96%	21.1%	22.50%	22.76%	22.7%	41.25%	44.89%	43.9%	97.56%	94.85%	93.13%
Not EDS	50.72%	35.95%	33.1%	13.04%	28.83%	29.0%	15.22%	19.52%	20.5%	21.01%	15.70%	17.4%	100.00%	97.25%	96.02%
SWD	*	4.72%	4.3%	*	11.32%	9.4%	20.00%	20.28%	18.8%	72.00%	63.68%	67.5%	100.00%	89.45%	89.82%
Non SWD	34.07%	30.01%	28.0%	18.68%	28.46%	28.2%	19.05%	20.70%	21.6%	28.21%	20.83%	22.1%	98.91%	97.41%	95.62%
LEP	*	2.59%	1.7%	*	7.78%	6.4%	20.00%	21.90%	18.4%	75.00%	67.72%	73.5%	97.56%	98.02%	94.82%
Not LEP	36.82%	29.64%	28.5%	18.99%	28.43%	28.8%	18.99%	20.52%	21.7%	25.19%	21.42%	21.0%	99.23%	96.22%	94.92%
Migrant	*	13.46%	11.5%	*	28.85%	20.9%	25.00%	19.87%	20.2%	43.75%	37.82%	47.4%	94.12%	93.41%	95.03%
Not Migrant	32.62%	27.63%	26.2%	17.38%	26.32%	26.4%	18.79%	20.69%	21.4%	31.21%	25.36%	26.1%	99.30%	96.54%	94.90%
Female	26.24%	25.67%	23.7%	18.44%	26.30%	27.0%	21.28%	22.06%	22.4%	34.04%	25.96%	27.0%	98.60%	96.89%	95.23%
Male	36.94%	28.29%	26.8%	15.92%	26.55%	25.1%	17.20%	19.31%	20.3%	29.94%	25.84%	27.8%	99.37%	95.93%	94.60%

\* Results cannot be published without releasing personally identifiable information based upon the EED reporting protocol

**2007-08 SBA Results Compared for Central Middle School of Science, District and State**

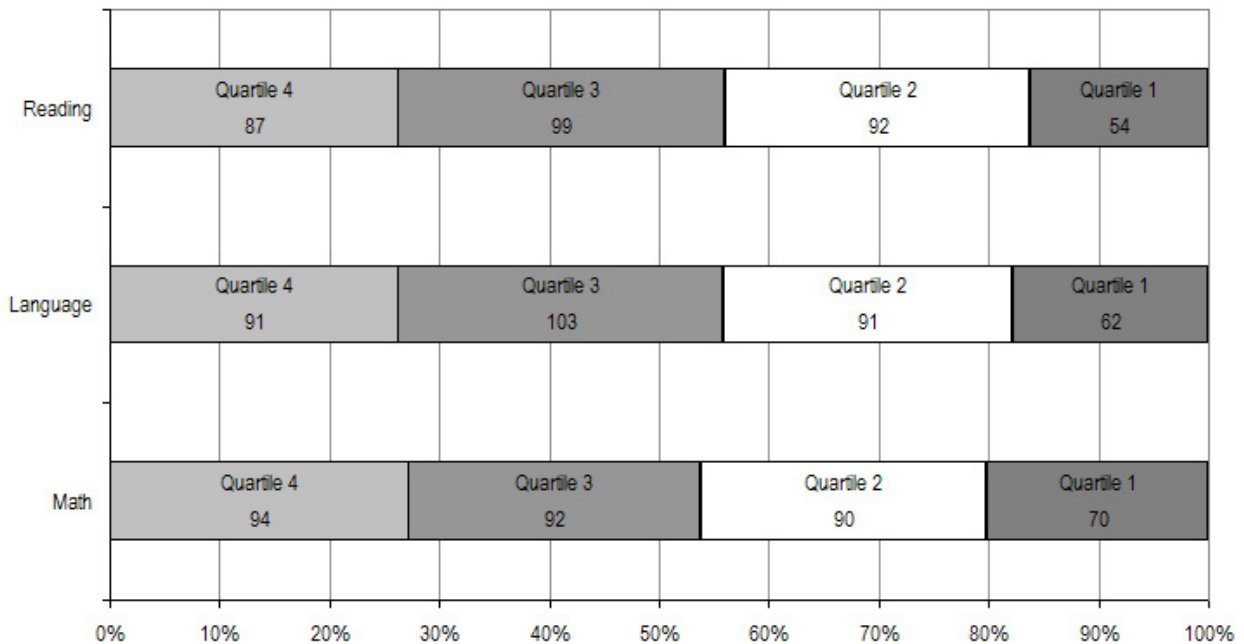


\* 2007-08 was the first year Science was administered for grades 4, 8 and 10 on the SBA.

Central Middle School of Science TerraNova Grade 7 Percent in Each Quartile								
Reading	Above Average		Average				Below Average	
	4th Quartile (76-99 percentile)		3rd Quartile (51-75 percentile)		2nd Quartile (26-50 percentile)		1st Quartile (1-25 percentile)	
	School	District	School	District	School	District	School	District
07-08	26.20%	30.31%	29.82%	32.50%	27.71%	24.54%	16.27%	12.66%
06-07	38.5%	35.6%	22.6%	28.0%	21.6%	21.5%	17.3%	14.9%
05-06	27.8%	34.6%	29.0%	28.4%	23.7%	21.8%	19.5%	15.3%
04-05	27.0%	33.9%	32.2%	27.1%	24.0%	21.7%	16.8%	17.4%
03-04	36.2%	35.1%	27.7%	28.2%	17.7%	21.4%	18.5%	15.3%
<b>Language</b>								
07-08	26.22%	30.26%	29.68%	29.23%	26.22%	25.08%	17.87%	15.43%
06-07	34.6%	35.4%	27.6%	28.7%	22.6%	21.5%	15.2%	14.3%
05-06	29.6%	34.9%	28.7%	28.4%	21.3%	21.4%	20.4%	15.3%
04-05	32.2%	34.4%	29.8%	28.2%	21.2%	20.5%	16.8%	16.9%
03-04	37.7%	35.3%	26.7%	28.5%	20.4%	21.7%	15.2%	14.5%
<b>Mathematics</b>								
07-08	27.17%	32.27%	26.59%	26.81%	26.01%	24.16%	20.23%	16.76%
06-07	35.1%	31.5%	24.6%	28.3%	24.9%	23.0%	15.4%	17.2%
05-06	23.4%	31.4%	32.4%	27.8%	27.9%	23.4%	16.2%	17.4%
04-05	32.0%	29.7%	23.7%	26.4%	25.6%	22.9%	18.7%	20.9%
03-04	35.5%	30.2%	22.8%	27.6%	25.3%	23.9%	16.4%	18.4%

The double bold line indicates a change from the TerraNova 2<sup>nd</sup> edition to the TerraNova 3<sup>rd</sup> edition.

2007-08 TerraNova 3rd Edition Grade 7 Percent and Count of Students in Each Quartile for Central Middle School of Science



## Climate Survey Results for Central Middle School of Science

The Anchorage School District administered the School Climate and Connectedness Surveys in spring 2008 to students in grades 5-12, all school staff and parents/guardians of students in grades K-12. The surveys were done to provide schools with information about perceptions and experiences related to school climate for use in setting school goals and redirecting resources. In the spring of 2008 grades 3 and 4 students were involved in a pilot survey for measuring school climate and connectedness. The results are currently under review by the American Institutes for Research.

Respondents were asked to answer a series of questions that were related to a certain concept. For each item, there were five options from which to choose a response. The answer options ranged from strongly disagree (1) to strongly agree (5).

Student Survey Response Rate Grades 5-12			
	Central Middle School of Science	Overall Middle Schools	District**
# Surveys Completed	519	5,722	21,629
# Reportable Surveys	446	5,021	18,508
# Students Enrolled*	654	7,188	28,945
Reportable Response Rate	68.20%	69.85%	63.94%

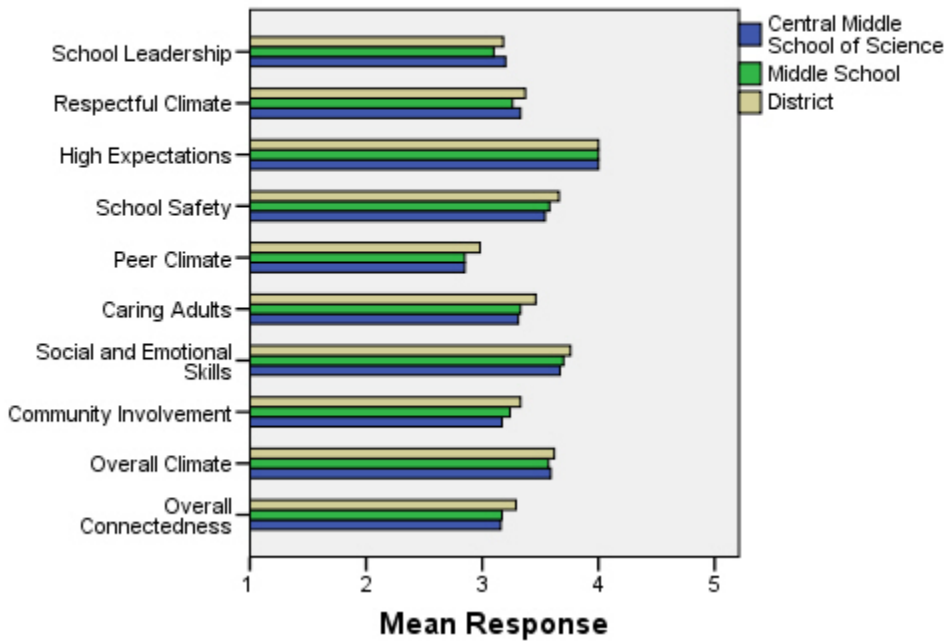
\*Number enrolled as of April 1, 2008

\*\*District data does not include KCC responses

Each question in the survey related to a factor or concept, and a score was calculated based on the mean response for the questions related to each factor. The factors measured in the survey were:

- **School Leadership and Student Involvement:** This factor reflects students' feelings about the decision making of school leaders as well as student participation in the school governance. Students selected responses between 1 and 5 where 1 indicates a low level of school leadership and student involvement and 5 indicates a high level of school leadership and student involvement.
- **Respectful Climate:** This factor reflects students' feelings about fairness of rules and respect for students' contributions. Students selected responses between 1 and 5 where 1 indicates a lack of a respectful climate and 5 indicates a highly respectful climate for students.
- **High Expectations:** This factor reflects students' feelings about their own expectations as well as those of adults in their school and community. Students selected responses between 1 and 5 where 1 indicates a lack of high expectations and 5 indicates a high level of high expectations.
- **School Safety:** This factor reflects students' feelings about bullies and gangs at school as well as general crime and violence in the community. Students selected responses between 1 and 5 where 1 indicates a low level of school safety and 5 indicates a high level of school safety.
- **Peer Climate:** This factor reflects students' feelings about how respectful students are to one another and how helpful students are to other students. Students selected responses between 1 and 5 where 1 indicates a more negative peer climate and 5 indicates a very positive peer climate at the school.
- **Caring Adults:** This factor reflects students' feelings about how close they feel to adults in the school. Students selected responses between 1 and 5 where 1 indicates a lack of caring adult relationships and 5 indicates strong caring adult relationships at the school.
- **Social and Emotional Learning:** This factor reflects students' ability to think about the consequences of their actions and to empathize with others. Students selected responses between 1 and 5 where 1 indicates that students at the school perceive themselves as having poorer social and emotional learning, and 5 indicates higher levels of social and emotional learning.
- **Community Involvement:** This factor reflects students' feelings about how supportive and welcoming the school is with parents and the community. Students selected responses between 1 and 5 where 1 indicates a less supportive and welcoming environment and 5 indicates a more supportive and welcoming environment.
- **Overall Climate:** The overall climate score was computed as the mean of three scales: school leadership, high expectations and school safety.
- **Overall Connectedness:** Overall connectedness score was computed as a mean of four scales: respectful climate, peer climate, caring adults and community involvement.

### Climate and Connectedness Student Survey - Central



Student Survey Mean Response by Factors Related to School Climate - Overall District			
	Central Middle School of Science	Overall Middle Schools	District
School Leadership	3.20	3.10	3.18
Respectful Climate	3.33	3.26	3.37
High Expectations	4.00	4.00	4.00
School Safety	3.54	3.58	3.66
Peer Climate	2.85	2.85	2.98
Caring Adults	3.31	3.33	3.46
Social and Emotional Skills	3.67	3.70	3.76
Community Involvement	3.17	3.24	3.33
Overall Climate	3.59	3.57	3.62
Overall Connectedness	3.16	3.17	3.29

Range is from a low of 1 to a high of 5

Students were also asked to answer questions related to school danger. The following table provides the responses for those questions:

Student Survey Results of the School Danger Questions - Percent of Students Responding in Each Category					
	0 Times	1-2 Times	3-6 Times	7-12 Times	> 12 Times
<b>Central Middle School of Science</b>					
Under the influence of drugs?	70.72%	16.67%	5.18%	2.48%	4.95%
Under the influence of alcohol?	69.44%	16.18%	5.39%	3.82%	5.17%
Destroy things (vandalism)?	43.34%	29.57%	14.00%	4.74%	8.35%
Get into fights?	24.83%	36.12%	20.54%	7.90%	10.61%
Steal things?	42.69%	26.03%	14.16%	6.16%	10.96%
Threaten or bully?	31.83%	24.15%	16.48%	6.77%	20.77%
Under the influence of inhalants?	70.23%	12.95%	5.68%	3.64%	7.50%
Carry weapons?	73.30%	17.19%	4.75%	1.13%	3.62%
<b>Overall Middle Schools</b>					
Under the influence of drugs?	64.66%	18.15%	7.88%	2.73%	6.57%
Under the influence of alcohol?	68.04%	16.94%	6.71%	3.34%	4.97%
Destroy things (vandalism)?	37.30%	30.56%	16.24%	7.13%	8.77%
Get into fights?	23.45%	34.39%	22.40%	8.21%	11.55%
Steal things?	40.02%	27.06%	14.98%	8.34%	9.60%
Threaten or bully?	28.58%	25.86%	17.04%	10.29%	18.23%
Under the influence of inhalants?	67.97%	15.45%	6.70%	3.13%	6.76%
Carry weapons?	68.29%	21.26%	4.76%	1.95%	3.75%
<b>District</b>					
Under the influence of drugs?	60.45%	15.05%	9.54%	3.92%	11.04%
Under the influence of alcohol?	63.11%	16.37%	8.90%	4.43%	7.19%
Destroy things (vandalism)?	41.26%	29.47%	15.45%	5.88%	7.94%
Get into fights?	26.40%	35.20%	21.96%	7.11%	9.33%
Steal things?	44.80%	25.68%	13.81%	6.98%	8.74%
Threaten or bully?	32.21%	26.21%	16.68%	9.27%	15.63%
Under the influence of inhalants?	72.79%	14.21%	5.66%	2.48%	4.87%
Carry weapons?	69.45%	19.15%	5.34%	2.01%	4.06%

Student Survey Results of the Mean Factor Score by Ethnicity (Self-Reported)							
	AKNA/AI	AF AM	Hispanic	Asian/NH	White	Other	Multi-Ethnic
<b>Central Middle School of Science</b>							
School Leadership	3.40	3.13	3.26	3.33	3.20	3.37	2.94
Respectful Climate	3.27	2.96	3.47	3.44	3.44	3.42	3.09
High Expectations	4.13	3.93	3.89	4.02	4.03	4.05	3.89
School Safety	3.50	3.44	3.42	3.47	3.61	3.53	3.55
Peer Climate	2.94	2.67	2.88	2.99	2.78	2.86	2.93
Caring Adults	3.41	3.28	3.22	3.18	3.41	3.43	3.18
Social and Emotional Skills	3.78	3.70	3.61	3.65	3.69	3.74	3.61
Community Involvement	3.18	3.15	3.35	3.13	3.19	3.24	3.09
Overall Climate	3.69	3.50	3.53	3.65	3.62	3.61	3.47
Overall Connectedness	3.21	3.01	3.21	3.16	3.21	3.24	3.10
<b>Overall Middle Schools</b>							
School Leadership	3.26	2.96	3.09	3.21	3.08	3.16	3.01
Respectful Climate	3.38	3.00	3.26	3.30	3.31	3.24	3.14
High Expectations	3.98	3.87	3.96	4.02	4.04	3.97	3.94
School Safety	3.51	3.42	3.51	3.40	3.72	3.39	3.56
Peer Climate	2.93	2.69	2.79	2.95	2.86	2.80	2.82
Caring Adults	3.38	3.23	3.24	3.24	3.40	3.31	3.28
Social and Emotional Skills	3.67	3.54	3.68	3.75	3.75	3.67	3.61
Community Involvement	3.30	3.10	3.20	3.23	3.28	3.23	3.18
Overall Climate	3.58	3.43	3.54	3.55	3.62	3.52	3.52
Overall Connectedness	3.23	2.99	3.13	3.18	3.21	3.15	3.11
<b>District</b>							
School Leadership	3.33	3.14	3.19	3.28	3.14	3.17	3.15
Respectful Climate	3.48	3.18	3.32	3.39	3.39	3.37	3.33
High Expectations	3.98	3.94	3.96	4.02	4.02	4.00	4.01
School Safety	3.60	3.48	3.55	3.47	3.78	3.51	3.62
Peer Climate	3.01	2.85	2.94	3.05	3.00	2.92	2.93
Caring Adults	3.49	3.43	3.37	3.33	3.51	3.42	3.46
Social and Emotional Skills	3.73	3.66	3.73	3.81	3.78	3.75	3.74
Community Involvement	3.37	3.22	3.31	3.29	3.34	3.34	3.31
Overall Climate	3.64	3.52	3.57	3.59	3.65	3.56	3.60
Overall Connectedness	3.33	3.17	3.24	3.26	3.31	3.26	3.27

Staff Survey Response Rate			
	Central Middle School of Science	Overall Middle Schools	District**
# Surveys Completed	56	522	2,980
# Reportable Surveys	55	521	2,968
# Staff Members*	68	789	5,549
Reportable Response Rate	80.88%	66.03%	53.49%

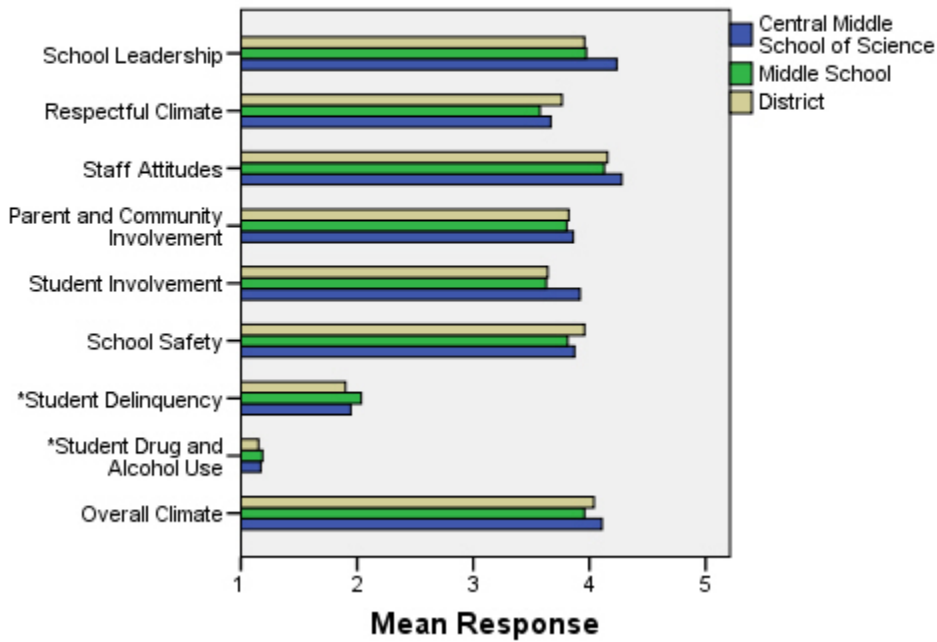
\*Number staff as of April 1, 2008

\*\*Includes KCC responses

Each question in the survey related to a factor or concept, and a score was calculated based on the mean response for the questions related to each factor. The factors were:

- **School Leadership:** This factor reflects staff members' feelings about the decision making of school leaders as well as the fairness of school rules. Staff members selected responses between 1 and 5 where 1 indicates a low level of school leadership and 5 indicates a high level of school leadership.
- **Respectful Climate:** This factor reflects staff members' feelings about how students treat each other and how well students and staff members treat one another. Staff members selected responses between 1 and 5 where 1 indicates a low level of respect and 5 indicates a high level.
- **Staff Attitudes:** This scale reflects staff members' feelings about the competence of teachers as well as how positive their attitudes are towards their jobs. Staff members selected responses between 1 and 5 where 1 indicates more negative staff attitudes and 5 indicates highly positive staff attitudes.
- **Parent and Community Involvement:** This factor reflects staff members' feelings about how accessible the school is for parents as well as how connected adults in the community are to the school. Staff members selected responses between 1 and 5 where 1 indicates a low level of parent and community involvement and 5 indicates a high level of parent and community involvement.
- **Student Involvement:** This factor reflects staff members' feeling about how involved students are in the decision making process. Staff members selected responses between 1 and 5 where 1 indicates a low level of student involvement and 5 indicates a high level of student involvement.
- **School Safety:** This factor reflects staff members' feelings about the impact of gangs and bullies as well as general crime and violence in the community. Staff members selected responses between 1 and 5 where 1 indicates a low level school safety and 5 indicates a high level of school safety.
- **Student Delinquency:** This factor uses staff members' reports of observing students getting into fights, stealing and bullying. The student delinquency and student drug and alcohol use scales differ from the other factors since the higher the score is the more negative the response. Staff members selected responses between 1 and 5 where 1 indicates a low level of student delinquency and 5 indicates a high level of student delinquency.
- **Student Drug and Alcohol Use:** This factor uses staff members' reports of observing students under the influence of drugs or alcohol. The student delinquency and student drug and alcohol use scales differ from the other factors since the higher the score is the more negative the response. Staff members selected responses between 1 and 5 where 1 indicates a low level of student drug and alcohol use and 5 indicates a high level of student drug and alcohol use.
- **Overall Climate:** Computed as the mean of 8 scales: school leadership, respectful climate, staff attitudes, parent and community involvement, student involvement, school safety, student delinquency, and drug and alcohol use scores.

### Climate and Connectedness Staff Survey - Central



Staff Survey Mean Response by Factors Related to School Climate - Overall District			
	Central Middle School of Science	Overall Middle Schools	District
School Leadership	4.24	3.97	3.96
Respectful Climate	3.67	3.57	3.76
Staff Attitudes	4.28	4.13	4.16
Parent & Community Involvement	3.86	3.81	3.82
Student Involvement	3.92	3.63	3.64
School Safety	3.87	3.81	3.96
Student Delinquency*	1.95	2.04	1.90
Student Drug & Alcohol Use*	1.17	1.19	1.15
Overall Climate	4.11	3.96	4.04

Range is from a low of 1 to a high of 5

\*Student Drug and Alcohol Use and Student Delinquency factor scale scores differ from other factors since the higher the score is the more negative the response.

Staff members were also asked to answer questions related to school danger. The following table provides the responses for those questions:

Staff Survey Results of the School Danger Questions - Percent of Staff Responding in Each Category					
	0 Times	1-2 Times	3-6 Times	7-12 Times	> 12 Times
<b>Central Middle School of Science</b>					
Under the influence of drugs?	86.96%	10.87%	2.17%	0.00%	0.00%
Under the influence of alcohol?	73.33%	24.44%	2.22%	0.00%	0.00%
Destroy things (vandalism)?	28.26%	45.65%	21.74%	2.17%	2.17%
Get into fights?	32.61%	43.48%	15.22%	4.35%	4.35%
Steal things?	26.09%	56.52%	15.22%	2.17%	0.00%
Threaten or bully?	20.45%	36.36%	25.00%	11.36%	6.82%
Under the influence of inhalants?	93.48%	6.52%	0.00%	0.00%	0.00%
Carry weapons?	78.26%	17.39%	4.35%	0.00%	0.00%
<b>Overall Middle Schools</b>					
Under the influence of drugs?	78.08%	15.88%	3.80%	1.57%	0.67%
Under the influence of alcohol?	83.94%	14.03%	1.36%	0.45%	0.23%
Destroy things (vandalism)?	26.97%	41.57%	19.33%	7.87%	4.27%
Get into fights?	31.99%	38.03%	19.02%	6.49%	4.47%
Steal things?	37.75%	37.53%	16.18%	3.60%	4.94%
Threaten or bully?	14.64%	36.26%	25.68%	12.61%	10.81%
Under the influence of inhalants?	95.02%	4.07%	0.45%	0.23%	0.23%
Carry weapons?	83.75%	14.67%	0.90%	0.23%	0.45%
<b>District</b>					
Under the influence of drugs?	82.61%	11.54%	4.11%	1.19%	0.55%
Under the influence of alcohol?	86.69%	10.21%	2.34%	0.60%	0.16%
Destroy things (vandalism)?	38.03%	36.81%	16.05%	5.07%	4.04%
Get into fights?	35.38%	38.78%	16.46%	4.83%	4.55%
Steal things?	41.82%	37.07%	14.02%	4.28%	2.81%
Threaten or bully?	22.88%	37.15%	21.97%	8.96%	9.04%
Under the influence of inhalants?	97.27%	2.42%	0.24%	0.04%	0.04%
Carry weapons?	88.47%	10.26%	1.11%	0.08%	0.08%

Staff Survey Results of the Mean Factor Score by Ethnicity (Self-Reported)						
	AKNA/AI	AF AM	Hispanic	Asian/NH	White	Multi-Ethnic
<b>Central Middle School of Science</b>						
School Leadership	***	***	3.88	4.25	4.22	4.75
Respectful Climate	***	***	3.40	3.20	3.67	4.20
Staff Attitudes	***	***	4.20	4.00	4.27	4.80
Parent and Community Involvement	***	***	3.14	3.57	3.85	5.00
Student Involvement	***	***	3.00	3.33	3.93	5.00
School Safety	***	***	3.80	3.00	3.88	4.20
Student Delinquency*	***	***	1.80	1.80	1.98	2.00
Student Drug and Alcohol Use*	***	***	1.33	1.00	1.18	1.33
Overall Climate	***	***	3.79	3.82	4.10	4.58
<b>Overall Middle Schools</b>						
School Leadership	3.71	3.94	4.09	4.28	3.98	4.15
Respectful Climate	3.45	3.60	3.76	3.68	3.57	3.65
Staff Attitudes	3.88	4.03	4.20	4.18	4.13	4.24
Parent and Community Involvement	3.49	3.95	3.96	4.06	3.80	3.87
Student Involvement	3.31	3.70	4.22	4.10	3.61	3.63
School Safety	3.63	3.71	3.80	3.82	3.82	3.80
Student Delinquency*	2.11	2.67	1.60	1.92	2.03	2.03
Student Drug and Alcohol Use*	1.07	1.40	1.03	1.04	1.19	1.15
Overall Climate	3.63	3.90	4.13	4.11	3.96	4.08
<b>District</b>						
School Leadership	3.99	3.99	4.13	4.15	3.96	4.06
Respectful Climate	3.66	3.83	3.84	3.96	3.76	3.84
Staff Attitudes	4.06	4.11	4.27	4.22	4.16	4.29
Parent and Community Involvement	3.75	3.91	3.94	3.93	3.82	3.85
Student Involvement	3.62	3.67	3.85	3.88	3.64	3.72
School Safety	3.82	3.94	4.06	3.94	3.97	3.94
Student Delinquency*	1.88	1.90	1.67	1.61	1.91	2.05
Student Drug and Alcohol Use*	1.12	1.26	1.03	1.16	1.15	1.13
Overall Climate	3.96	4.04	4.20	4.18	4.04	4.09

\*Student Drug and Alcohol Use and Student Delinquency factor scale scores differ from other factors since the higher the score is the more negative the response.

\*\*Staff survey results do not include an 'Other' ethnicity category since staff in that category all chose at least one other ethnicity in addition to 'Other' and were included in the 'Multi-Ethnic' category as a result.

\*\*\*Results can not be calculated because of missing responses

Parent/Guardian Survey Response Rate			
	Central Middle School of Science	Overall Middle Schools	District**
# Surveys Completed	78	1,648	7,415
# Primary Guardians*	659	7,219	48,693
Response Rate	11.84%	22.83%	15.23%

\*Number students enrolled as of April 1, 2008 without dual guardians included

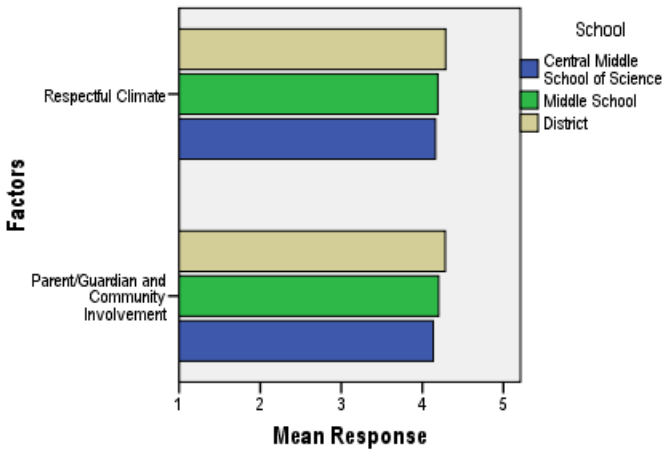
\*\*District data

- 1) does not include KCC responses;
- 2) does include responses without a school designation

Two factors are calculated from the Parent/Guardian Survey. All results other than the factor scores below are reported by individual question: questions in the graphs are condensed phrases from the full question, while questions in the tables are the full question.

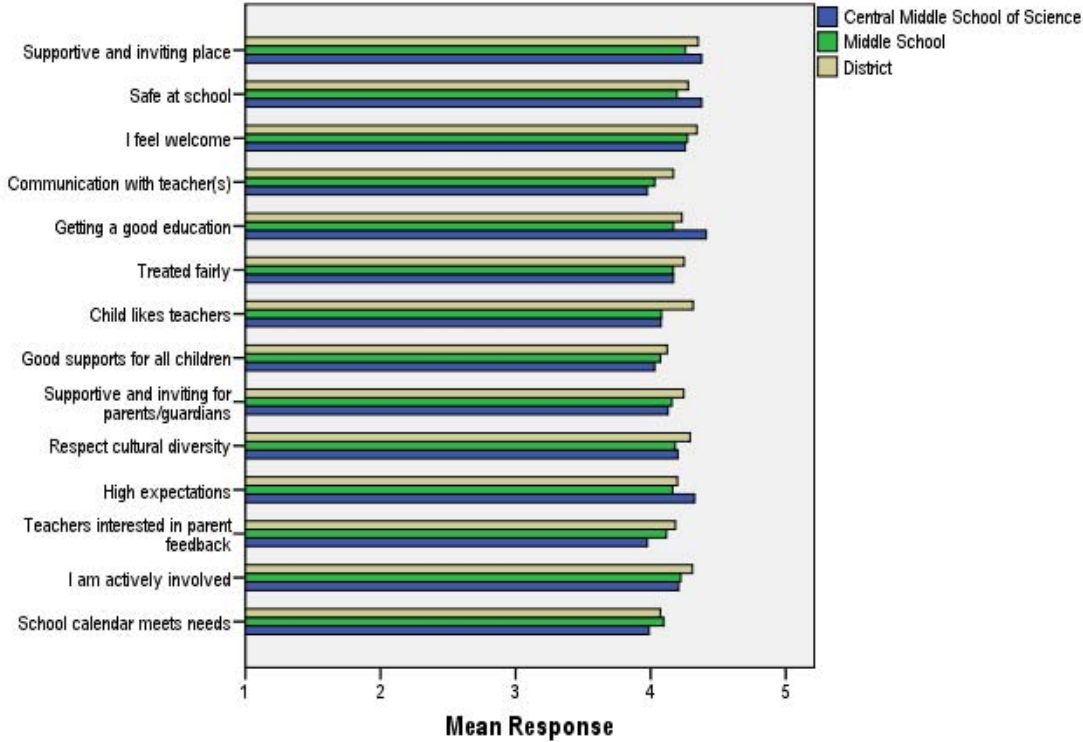
- **Respectful Climate:** This factor is calculated by determining the mean of five questions: 1) My child's school is a supportive and inviting place, 2) I feel welcome at this school, 3) I am satisfied with communication with my child's teacher(s), 4) This school is a supportive and inviting place for parents/guardians and 5) Adults at this school respect cultural diversity.
- **Parent/Guardian and Community Involvement:** This factor is calculated by determining the mean of five questions: 1) I feel welcome at this school, 2) This school is a supportive and inviting place for parents/guardians, 3) Adults at this school respect cultural diversity, 4) Teacher's at my child's school are interested in what I have to say and 5) I feel like I am actively involved in my child's education.

**Parent/Guardian Survey Mean Factor Scores (Range is from a low of 1 to a high of 5)**



Parent/Guardian Factor Scores			
	Central Middle School of Science	Overall Middle Schools	District
Respectful Climate	4.16	4.19	4.29
Parent/Guardian and Community Involvement	4.14	4.20	4.28

**Climate and Connectedness Parent/Guardian Survey - Central**



Parent/Guardian Mean Response by Questions Related to School Climate - Overall

	Central Middle School of Science	Overall Middle Schools	District
My child's school is a supportive and inviting place	4.38	4.26	4.35
My child is safe at school	4.38	4.19	4.28
I feel welcome at this school	4.26	4.27	4.34
I am satisfied with communication with my child's teacher(s)	3.97	4.03	4.17
My child is getting a good education at this school	4.41	4.17	4.23
My child is treated fairly at school	4.17	4.17	4.25
My child likes his/her teachers	4.08	4.08	4.31
At this school, there are good supports for all children, including children with learning disabilities	4.03	4.07	4.12
This school is a supportive and inviting place for parents/guardians	4.13	4.16	4.24
Adults at this school respect cultural diversity	4.20	4.18	4.29
Adults at this school have high expectations of my child	4.32	4.16	4.20
Teachers at my child's school are interested in what I have to say	3.97	4.12	4.18
I feel like I am actively involved in my child's education	4.21	4.22	4.31
The district's school calendar meets the needs of my child and our family	3.99	4.10	4.07

Range is from a low of 1 to a high of 5

Parent/Guardian Mean Response by Questions Related to School Climate by Ethnicity (Self-Reported)							
Central Middle School of Science	AF AM	AKNA/AI	Asian/NH	White	Hispanic	ME	Other
My child's school is a supportive and inviting place	4.40	4.25	4.58	4.29	4.43	4.83	4.25
My child is safe at school	4.40	4.25	4.64	4.29	4.14	4.71	4.50
I feel welcome at this school	4.00	4.25	4.42	4.18	4.00	4.86	4.50
I am satisfied with communication with my child's teacher(s)	3.80	4.00	4.25	3.89	3.86	4.57	3.50
My child is getting a good education at this school	4.40	4.00	4.58	4.45	4.29	4.57	4.25
My child is treated fairly at school	3.60	4.00	4.45	4.21	3.86	4.71	4.00
My child likes his/her teachers	3.60	4.00	4.50	4.11	3.86	4.14	3.75
At this school, there are good supports for all children, including children with learning disabilities	3.80	4.00	4.17	4.09	3.40	4.43	4.00
This school is a supportive and inviting place for parents/guardians	3.80	4.00	4.33	4.05	4.14	4.71	4.00
Adults at this school respect cultural diversity	4.00	4.00	4.50	4.14	3.83	4.57	4.25
Adults at this school have high expectations of my child	3.80	4.00	4.42	4.39	4.33	4.57	4.25
Teachers at my child's school are interested in what I have to say	4.00	3.75	3.92	3.97	4.00	4.43	3.75
I feel like I am actively involved in my child's education	4.60	4.25	4.25	4.16	4.00	4.50	4.25
The district's school calendar meets the needs of my child and our family	3.80	3.50	3.25	4.22	4.14	4.14	4.50
<b>Overall Middle Schools</b>							
My child's school is a supportive and inviting place	4.13	4.25	4.24	4.29	4.30	4.28	4.14
My child is safe at school	4.04	4.18	4.30	4.21	4.07	4.22	3.93
I feel welcome at this school	4.07	4.33	4.22	4.31	4.19	4.31	4.23
I am satisfied with communication with my child's teacher(s)	3.80	4.03	4.05	4.04	4.13	4.06	4.00
My child is getting a good education at this school	3.93	4.19	4.18	4.19	4.24	4.20	4.19
My child is treated fairly at school	3.77	4.12	4.17	4.23	4.21	4.16	4.09
My child likes his/her teachers	3.77	4.13	4.17	4.10	4.09	4.01	4.00
At this school, there are good supports for all children, including children with learning disabilities	3.81	4.18	4.10	4.08	4.06	4.09	3.90
This school is a supportive and inviting place for parents/guardians	3.97	4.18	4.16	4.18	4.11	4.24	3.95
Adults at this school respect cultural diversity	3.85	4.10	4.10	4.26	4.07	4.24	4.19
Adults at this school have high expectations of my child	3.88	4.20	4.11	4.20	4.17	4.20	4.09
Teachers at my child's school are interested in what I have to say	3.96	4.20	4.12	4.12	4.08	4.15	4.16
I feel like I am actively involved in my child's education	4.36	4.22	4.19	4.21	4.32	4.15	4.07
The district's school calendar meets the needs of my child and our family	4.28	4.17	4.11	4.07	4.23	4.08	3.93
<b>District</b>							
My child's school is a supportive and inviting place	4.20	4.37	4.37	4.37	4.41	4.37	4.20
My child is safe at school	4.18	4.31	4.31	4.29	4.29	4.30	4.11
I feel welcome at this school	4.18	4.31	4.36	4.36	4.38	4.40	4.23
I am satisfied with communication with my child's teacher(s)	3.99	4.21	4.23	4.16	4.32	4.20	4.03
My child is getting a good education at this school	4.09	4.28	4.31	4.23	4.33	4.26	4.03
My child is treated fairly at school	3.94	4.21	4.24	4.29	4.30	4.24	4.08
My child likes his/her teachers	4.06	4.33	4.35	4.33	4.31	4.34	4.20
At this school, there are good supports for all children, including children with learning disabilities	3.90	4.19	4.23	4.11	4.24	4.18	3.97
This school is a supportive and inviting place for parents/guardians	4.05	4.21	4.29	4.26	4.31	4.31	4.05
Adults at this school respect cultural diversity	4.02	4.20	4.22	4.34	4.29	4.31	4.17
Adults at this school have high expectations of my child	4.05	4.24	4.21	4.21	4.26	4.20	3.94
Teachers at my child's school are interested in what I have to say	4.04	4.22	4.17	4.20	4.28	4.19	4.05
I feel like I am actively involved in my child's education	4.36	4.29	4.24	4.33	4.37	4.30	4.20
The district's school calendar meets the needs of my child and our family	4.18	4.19	4.16	4.06	4.21	4.02	3.66

Range is from a low of 1 to a high of 5