

Chester Valley Elementary School Overview

Statement of Program

Chester Valley Elementary School provides a complete K-5 program with ongoing emphasis on academic achievement and mastery of basic skills. Our current student population is 284 students. Last year was the last time we housed sixth-grade students. Sixth-graders in our area now attend Begich Middle School.

We have a preschool program for learning disabled and special-needs children. The instructional staff includes classroom teachers, music, art, health, special education resource, physical education, the library and Ignite Program. Support services are available in bilingual, speech, occupational and physical therapy, psychology, and through the school nurse.

Chester Valley provides full-day kindergarten and is a neighborhood school that is committed to increased student learning. We are dedicated to expanding our partnership with our families and community. Chester Valley has been fortunate to have an active and strong PTA that supports our academic goals and the educational efforts.

From the School Report Card

School Goals	
Goal	Level of Achievement
Eighty percent of students in grades 1-5 who rated not proficient in reading will improve their district reading assessment scores by 8 points or more.	Partially Attained
Eighty percent of students in grades 1-5 will demonstrate 80 percent math proficiency on a spring grade-level computation test.	Partially Attained

From the School Report Card

Budget*	
2006-07 Actual Expenditures	\$1,503,726
2007-08 Revised Budgeted Amount	\$1,709,617
2008-09 Proposed Budget	\$1,742,475

*Dollars budgeted or expended are general fund only
From IFAS

Chester Valley Elementary School Characteristics			
	School	District	Source of Information
Membership	253	48,858	Fall OASIS
Capacity	68.52%	N/A	2008-18 ASD Capital Improvement Plan
Attendance Rate	93.32%	92.83%	NCLB Summer Data Collection
Retention Rate K-8	0.45%	0.60%	SMS and NCLB Summer Data Collection
Transiency Rate	30.74%	26.07%	NCLB Summer Data Collection
Economically Disadvantaged	136	17,717	Fall OASIS
Average Weekly Volunteer Hours	40	4,660	Department of Education Report Card Report
Students Taking the Alternate Assessment	0	228	SMS
Change in Enrollment	-10.60%	-0.76%	Fall Oasis

Teacher Qualification				
Number of Teachers	Percent Fully Licensed	Percent With Advanced Degrees	Number Nationally Board Certified	Percent of Classes Taught by "Highly Qualified Teachers"
24	100.00%	25.00%	1	95.00%

Chester Valley Elementary School Business Partnerships
AFD Fire Station #6; Browns Electric Supply Company; Prince Hall Grand Lodge District #1

From the School Report Card

Ethnicity Report							
African-American/Black	Alaska Native/American Indian	Asian	Native Hawaiian/Other Pacific Islander	White	Hispanic	Multi-Ethnic	Total
15	38	13	15	84	25	63	253

From Fall Oasis

Full Academic Year		
Students Enrolled	Students Enrolled for FAY	Percent FAY
269	226	84.01%

From participation file (Grades 3-10)

**Chester Valley Elementary School
2007-08 Adequate Yearly Progress
Status Report**

Does Not Meet AYP
Level 1

AMO For Language Arts: 77.18%
AMO For Mathematics: 66.09%

Group	Participation Rate				"FAY" (D) Tested & Enrolled "FAY"	Language Arts Performance				Mathematics Performance			
	(A) Number Enrolled	(B) Number Tested	Participation Rate (%)	(C) Participation Rate Met		(E) Proficient on LA	(F) Percent Proficient on LA	(G) LA Target	(H) Met AMO for LA	(I) Proficient on Mathematics	(J) Percent Proficient in Mathematics	(K) Mathematics Target	(L) Met AMO for Mathematics
All Students	123	123	100%	Yes	115	92	80%	68.1%	Yes	90	78.3%	55.8%	Yes
AF AM	8	8	N/A	N/A	N/A	N/A	N/A	N/A	N/A	N/A	N/A	N/A	N/A
AKNA/AI	17	17	N/A	N/A	N/A	N/A	N/A	N/A	N/A	N/A	N/A	N/A	N/A
Asian/NH/OPI	18	18	N/A	N/A	N/A	N/A	N/A	N/A	N/A	N/A	N/A	N/A	N/A
White	43	43	100%	Yes	41	37	90.2%	61.9%	Yes	36	87.8%	48.9%	Yes
Hispanic	9	9	N/A	N/A	N/A	N/A	N/A	N/A	N/A	N/A	N/A	N/A	N/A
ME	28	28	100%	Yes	27	21	77.8%	58.4%	Yes	18	66.7%	44.9%	Yes
EDS	69	69	100%	Yes	64	48	75%	65%	Yes	46	71.9%	52.3%	Yes
SWD	36	36	100%	Yes	35	21	60%	60.7%	No	19	54.3%	47.4%	Yes
LEP	25	25	100%	Yes	N/A	N/A	N/A	N/A	N/A	N/A	N/A	N/A	N/A

Attendance Rate: Met

93.3% (Threshold is 85%)

N/A is used to indicate:

- (1) Subgroups with 20 or fewer students enrolled on the first day of testing shall not be included in participation rate calculation.
- (2) Subgroups with 25 or fewer students enrolled for the "full academic year" shall not have the performance score computed.

* For the groups where the number enrolled is less than or equal to 40, participation is met when no more than two miss the test. Groups can also meet this target using the average of the past two or three years.

** When a group achieves a "Yes" without meeting the listed target, it has done so using either the 99% confidence interval or Safe Harbor.

*** The results cannot be published without releasing personally identifiable information based upon the EED reporting protocol.

This document was prepared by the ASD Assessment and Evaluation Department.

7/10/2008

Chester Valley Elementary School
2007-08 Adequate Yearly Progress
Growth Report

The AYP growth reports are generated by the Alaska State Department of Education and Early Development. The reports can be found online at: http://www.asdk12.org/depts/assess_eval/AYP/State_AS_D_AYG_0708.pdf

SBA Proficiency Comparison by Grade for Chester Valley Elementary School																
	Reading Percent Proficient				Writing Percent Proficient				Mathematics Percent Proficient				Science* Percent Proficient			
	04-05	05-06	06-07	07-08	04-05	05-06	06-07	07-08	04-05	05-06	06-07	07-08	04-05	05-06	06-07	07-08
All Students	74.38%	78.75%	79.43%	73.98%	74.68%	85.63%	82.27%	79.67%	68.32%	76.69%	85.82%	78.05%	N/A	N/A	N/A	36.84%
Grade 3	63.16%	77.78%	71.79%	60.00%	64.86%	83.33%	82.05%	73.33%	67.57%	78.38%	89.74%	77.78%	N/A	N/A	N/A	N/A
Grade 4	81.08%	75.00%	75.00%	81.58%	81.08%	87.50%	86.11%	78.95%	65.79%	70.00%	75.00%	76.32%	N/A	N/A	N/A	36.84%
Grade 5	75.00%	81.40%	84.38%	82.50%	82.05%	86.05%	90% or more	87.50%	80.00%	79.07%	87.50%	80.00%	N/A	N/A	N/A	N/A
Grade 6	77.78%	80.49%	88.24%	N/A**	71.11%	85.37%	67.65%	N/A**	60.87%	79.07%	91.18%	N/A**	N/A	N/A	N/A	N/A**

* 2007-08 was the first year Science was administered for grades 4, 8 and 10 on the SBA.

** In 2007-08 Chester Valley Elementary became a K-5 school.

SBA Proficient & Not Proficient by NCLB Groups for Chester Valley Elementary School								
	Reading		Writing		Mathematics		Science**	
	Percent Proficient	Percent Not Proficient	Percent Proficient	Percent Not Proficient	Percent Proficient	Percent Not Proficient	Percent Proficient	Percent Not Proficient
All Students	73.98%	26.02%	79.67%	20.33%	78.05%	21.95%	36.84%	63.16%
AF AM	75% or more	25% or fewer	75% or more	25% or fewer	75% or more	25% or fewer	*	*
AKNA/AI	52.94%	47.06%	52.94%	47.06%	64.71%	35.29%	60% or fewer	40% or more
Asian	66.67%	33.33%	75% or more	25% or fewer	75% or more	25% or fewer	*	*
NH/OPI	66.67%	33.33%	66.67%	33.33%	75% or more	25% or fewer	*	*
White	83.72%	16.28%	86.05%	13.95%	86.05%	13.95%	50.00%	50.00%
Hispanic	75% or more	25% or fewer	75% or more	25% or fewer	75% or more	25% or fewer	*	*
ME	75.00%	25.00%	78.57%	21.43%	67.86%	32.14%	44.44%	55.56%
EDS	68.12%	31.88%	75.36%	24.64%	71.01%	28.99%	29.41%	70.59%
Non-EDS	81.48%	18.52%	85.19%	14.81%	87.04%	12.96%	42.86%	57.14%
SWD	51.52%	48.48%	54.55%	45.45%	51.52%	48.48%	80% or fewer	20% or more
Non-SWD	82.22%	17.78%	88.89%	11.11%	87.78%	12.22%	46.15%	53.85%
LEP	44.44%	55.56%	66.67%	33.33%	66.67%	33.33%	*	*
Not LEP	76.32%	23.68%	80.70%	19.30%	78.95%	21.05%	41.18%	58.82%
Migrant	50.00%	50.00%	40% or fewer	60% or more	50.00%	50.00%	*	*
Not Migrant	75.21%	24.79%	82.05%	17.95%	79.49%	20.51%	36.11%	63.89%
Female	76.67%	23.33%	85.00%	15.00%	80.00%	20.00%	27.78%	72.22%
Male	71.43%	28.57%	74.60%	25.40%	76.19%	23.81%	45.00%	55.00%

* Results cannot be published without releasing personally identifiable information based upon the EED reporting protocol

** 2007-08 was the first year Science was administered for grades 4, 8 and 10 on the SBA.

SBA Mean Scale Score Comparison by NCLB Groups for Chester Valley Elementary School								
	Reading		Writing		Mathematics		Science***	
	06-07	07-08	06-07	07-08	06-07	07-08	06-07	07-08
All Students	367.43	363.66	372.66	371.47	366.96	358.90	N/A	285.66
AF AM	349.41	362.88	354.12	395.00	339.24	367.88	N/A	*
AKNA/AI	349.04	334.35	347.16	330.47	340.72	329.82	N/A	229.20
Asian**	340.45	354.11	363.73	390.44	368.27	376.00	N/A	*
NH/OPI**	N/A	317.67	N/A	333.89	N/A	334.00	N/A	*
White	390.93	389.63	392.68	391.98	386.91	379.26	N/A	295.90
Hispanic	*	359.78	*	372.22	*	354.89	N/A	*
ME	387.00	360.89	389.94	363.89	382.63	346.54	N/A	310.11
EDS	357.18	354.01	363.39	358.26	355.65	348.93	N/A	279.82
Non-EDS	380.89	375.98	384.82	388.35	381.79	371.65	N/A	290.38
SWD	318.66	309.33	319.83	312.64	323.20	310.91	N/A	252.33
Non-SWD	383.54	383.58	390.10	393.04	381.41	376.50	N/A	301.04
LEP	355.14	296.67	367.14	319.33	367.93	306.89	N/A	*
Not LEP	370.62	368.95	374.09	375.59	366.71	363.01	N/A	295.62
Migrant	377.50	321.33	379.00	318.50	359.83	341.67	N/A	*
Not Migrant	366.99	365.83	372.38	374.19	367.27	359.79	N/A	285.47
Female	383.88	370.20	395.84	386.00	373.17	357.02	N/A	284.94
Male	353.77	357.43	353.39	357.63	361.79	360.70	N/A	286.30

* Results cannot be published without releasing personally identifiable information based upon the EED reporting protocol

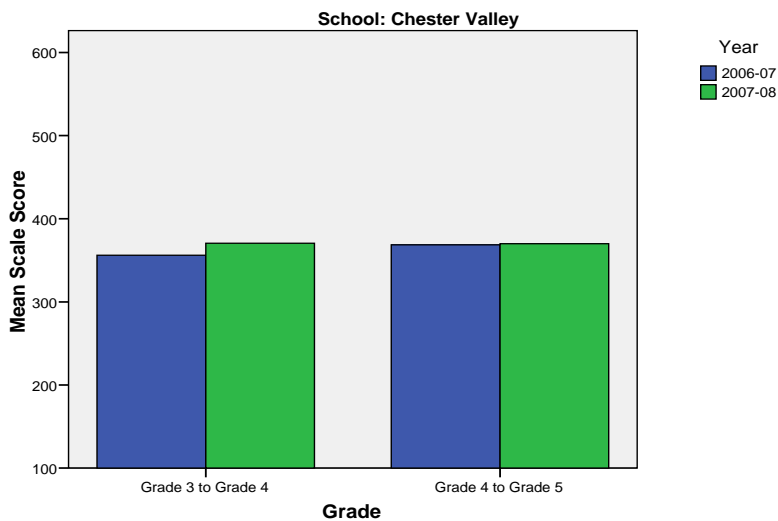
** Prior to 2007-08 the Asian category includes Native Hawaiian/Other Pacific Islander. In 2007-08 Native Hawaiian/Other Pacific Islander is a separate ethnic category.

*** 2007-08 was the first year Science was administered for grades 4, 8 and 10 on the SBA.

Chester Valley Elementary School SBA Change Average Scale Score by NCLB Groups: Reading						
	Average Scale Score of Students Tested in District Both Years			Average Scale Score of Students Tested in District Both Years		
	Grade 3 in 06-07	Grade 4 in 07-08	Difference	Grade 4-in 06-07	Grade 5 in 07-08	Difference
All Students	355.97	370.52	14.55	368.58	369.97	1.39
AF AM	*	*	*	*	*	*
AKNA/AI	*	*	*	*	*	*
Asian	*	*	*	*	*	*
NH/OPI	*	*	*	*	*	*
White	370.50	393.88	23.38	398.00	404.10	6.10
Hispanic	*	*	*	*	*	*
ME	356.22	361.56	5.33	379.25	380.75	1.50
EDS	342.15	361.46	19.31	366.09	372.09	6.00
Non-EDS	364.95	376.40	11.45	372.40	366.73	-5.67
SWD	310.18	319.09	8.91	311.60	314.30	2.70
Non-SWD	378.86	396.23	17.36	388.93	389.86	0.93
LEP	*	*	*	*	*	*
Not LEP	360.16	374.26	14.10	370.81	372.38	1.57
Migrant	*	*	*	*	*	*
Not Migrant	353.47	368.34	14.88	371.94	373.97	2.03
Female	365.33	385.47	20.13	379.50	387.17	7.67
Male	348.17	358.06	9.89	358.75	354.50	-4.25

* Results cannot be published without releasing personally identifiable information based upon the EED reporting protocol

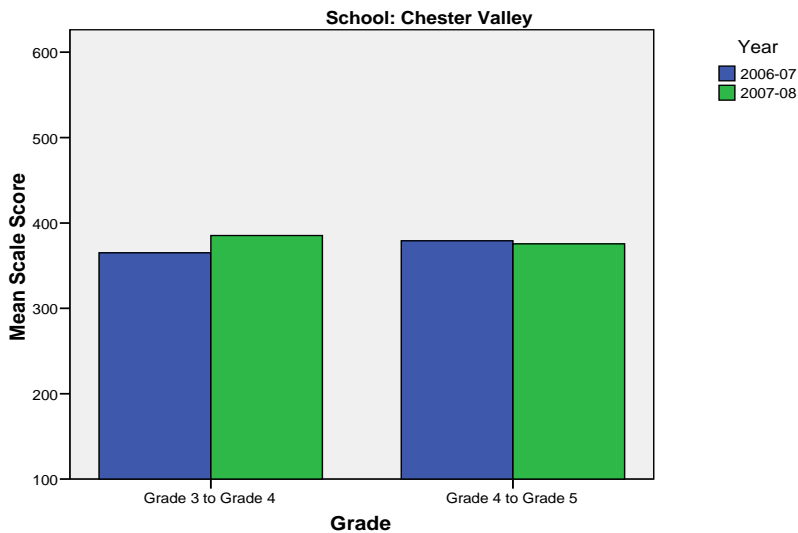
Change in Mean Scale Score in SBA Reading by Grade Between 2006-07 and 2007-08



Chester Valley Elementary School SBA Change Average Scale Score by NCLB Groups: Writing						
	Average Scale Score of Students Tested in District Both Years			Average Scale Score of Students Tested in District Both Years		
	Grade 3 in 06-07	Grade 4 in 07-08	Difference	Grade 4-in 06-07	Grade 5 in 07-08	Difference
All Students	365.12	385.21	20.09	379.16	375.55	-3.61
AF AM	*	*	*	*	*	*
AKNA/AI	*	*	*	*	*	*
Asian	*	*	*	*	*	*
NH/OPI	*	*	*	*	*	*
White	381.88	392.38	10.50	400.60	394.70	-5.90
Hispanic	*	*	*	*	*	*
ME	354.11	376.89	22.78	374.92	380.50	5.58
EDS	355.08	374.69	19.62	383.65	376.00	-7.65
Non-EDS	371.65	392.05	20.40	372.27	374.87	2.60
SWD	313.73	319.00	5.27	304.80	305.20	0.40
Non-SWD	390.82	418.32	27.50	405.71	400.68	-5.04
LEP	*	*	*	*	*	*
Not LEP	366.61	389.32	22.71	381.27	376.97	-4.30
Migrant	*	*	*	*	*	*
Not Migrant	364.25	381.72	17.47	380.78	380.81	0.03
Female	382.73	399.67	16.93	401.89	405.44	3.56
Male	350.44	373.17	22.72	358.70	348.65	-10.05

* Results cannot be published without releasing personally identifiable information based upon the EED reporting protocol

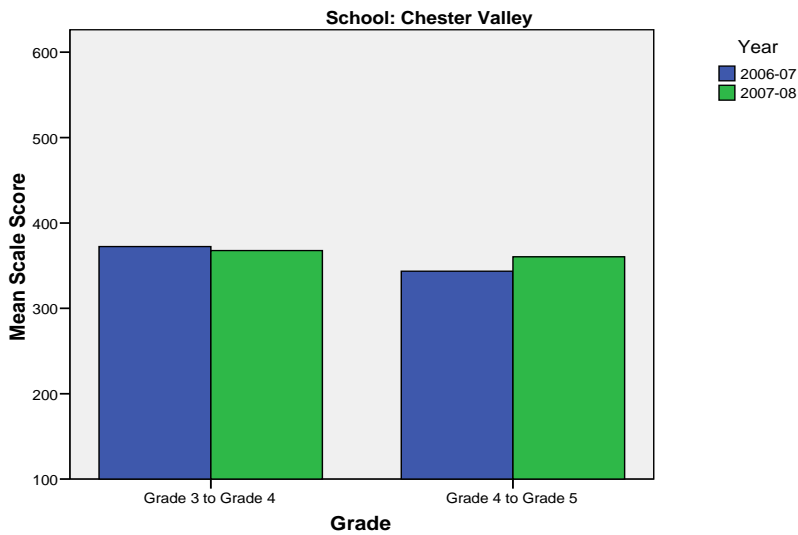
Change in Mean Scale Score in SBA Writing by Grade between 2006-07 and 2007-08



Chester Valley Elementary School SBA Change Average Scale Score by NCLB Groups: Mathematics						
	Average Scale Score of Students Tested in District Both Years			Average Scale Score of Students Tested in District Both Years		
	Grade 3 in 06-07	Grade 4 in 07-08	Difference	Grade 4-in 06-07	Grade 5 in 07-08	Difference
All Students	372.42	367.61	-4.82	343.45	360.39	16.95
AF AM	*	*	*	*	*	*
AKNA/AI	*	*	*	*	*	*
Asian	*	*	*	*	*	*
NH/OPI	*	*	*	*	*	*
White	385.00	372.88	-12.13	349.60	367.30	17.70
Hispanic	*	*	*	*	*	*
ME	400.67	376.56	-24.11	344.42	343.25	-1.17
EDS	369.31	366.08	-3.23	341.43	363.52	22.09
Non-EDS	374.45	368.60	-5.85	346.53	355.60	9.07
SWD	326.82	313.91	-12.91	286.30	294.20	7.90
Non-SWD	395.23	394.45	-0.77	363.86	384.04	20.18
LEP	*	*	*	*	*	*
Not LEP	376.45	371.00	-5.45	344.22	360.51	16.30
Migrant	*	*	*	*	*	*
Not Migrant	369.56	362.44	-7.13	345.03	363.72	18.69
Female	372.00	363.20	-8.80	346.06	372.11	26.06
Male	372.78	371.28	-1.50	341.10	349.85	8.75

* Results cannot be published without releasing personally identifiable information based upon the EED reporting protocol

Change in Mean Scale Score in SBA Mathematics by Grade between 2006-07 and 2007-08



Reading: SBA Results Compared for Chester Valley Elementary School, District and State Grades 3 Through 5															
	% Advanced Proficient			% Proficient			% Below Proficient			% Far Below Proficient			% Tested		
	School	District	State	School	District	State	School	District	State	School	District	State	School	District	State
All Students	30.89%	38.80%	35.15%	43.09%	44.49%	46.15%	16.26%	11.10%	11.99%	9.76%	5.62%	6.71%	100.00%	98.09%	97.93%
AF AM	*	20.90%	22.92%	50.00%	54.33%	54.15%	*	16.72%	14.82%	*	8.05%	8.10%	100.00%	98.03%	97.12%
AKNA/AI	23.53%	18.94%	14.26%	29.41%	51.63%	49.39%	*	17.82%	22.50%	*	11.61%	13.85%	100.00%	96.46%	97.50%
Asian	*	30.19%	28.49%	44.44%	49.61%	51.48%	33.33%	14.03%	13.97%	*	6.17%	6.07%	100.00%	97.59%	97.81%
NH/OPI	*	13.99%	N/A	55.56%	51.81%	N/A	33.33%	22.80%	N/A	*	11.40%	N/A	100.00%	98.97%	N/A
White	48.84%	51.96%	46.75%	34.88%	38.47%	42.79%	*	6.62%	6.85%	*	2.95%	3.61%	100.00%	98.60%	98.21%
Hispanic	*	31.00%	30.72%	55.56%	47.34%	49.30%	*	13.71%	12.50%	*	7.95%	7.48%	100.00%	97.28%	97.55%
ME	21.43%	32.16%	33.80%	53.57%	49.00%	48.48%	*	12.77%	12.05%	*	6.07%	5.67%	100.00%	98.17%	98.10%
EDS	26.09%	22.27%	21.16%	42.03%	50.15%	49.27%	20.29%	18.08%	18.77%	11.59%	9.50%	10.80%	100.00%	97.43%	96.36%
Not EDS	37.04%	50.76%	46.00%	44.44%	40.39%	43.74%	11.11%	6.05%	6.73%	7.41%	2.80%	3.53%	100.00%	98.57%	99.19%
SWD	9.09%	10.21%	9.67%	42.42%	37.67%	39.08%	24.24%	29.25%	27.60%	24.24%	22.87%	23.65%	100.00%	94.47%	93.77%
Non-SWD	38.89%	44.17%	39.59%	43.33%	45.77%	47.39%	13.33%	7.68%	9.27%	4.44%	2.37%	3.75%	100.00%	98.80%	98.69%
LEP	*	5.09%	3.35%	44.44%	41.59%	40.38%	44.44%	33.74%	34.02%	*	19.58%	22.26%	100.00%	94.56%	96.31%
Not LEP	33.33%	41.95%	39.46%	42.98%	44.76%	46.94%	14.04%	8.98%	9.00%	9.65%	4.31%	4.60%	100.00%	98.43%	98.16%
Migrant	*	26.96%	16.81%	*	50.69%	50.33%	*	15.21%	21.48%	*	7.14%	11.38%	100.00%	98.19%	98.58%
Not Migrant	30.77%	39.30%	36.42%	44.44%	44.22%	45.86%	16.24%	10.92%	11.33%	8.55%	5.55%	6.38%	100.00%	98.09%	97.89%
Female	31.67%	43.50%	38.97%	45.00%	43.85%	45.87%	16.67%	8.59%	10.11%	6.67%	4.06%	5.05%	100.00%	98.39%	98.32%
Male	30.16%	34.24%	31.53%	41.27%	45.11%	46.43%	15.87%	13.53%	13.77%	12.70%	7.13%	8.28%	100.00%	97.80%	97.57%

* Results cannot be published without releasing personally identifiable information based upon the EED reporting protocol

Writing: SBA Results Compared for Chester Valley Elementary School, District and State Grades 3 Through 5															
	% Advanced Proficient			% Proficient			% Below Proficient			% Far Below Proficient			% Tested		
	School	District	State	School	District	State	School	District	State	School	District	State	School	District	State
All Students	30.08%	34.51%	30.24%	49.59%	45.08%	45.63%	*	18.89%	22.15%	*	1.52%	1.98%	100.00%	98.02%	97.92%
AF AM	37.50%	20.43%	20.32%	62.50%	49.23%	50.69%	*	28.17%	26.43%	*	2.17%	2.56%	100.00%	98.03%	97.31%
AKNA/AI	*	16.36%	12.10%	41.18%	46.11%	42.81%	47.06%	33.84%	40.71%	*	3.68%	4.38%	100.00%	96.07%	97.57%
Asian	33.33%	30.56%	29.00%	66.67%	47.30%	46.59%	*	21.24%	23.29%	*	0.90%	1.12%	100.00%	97.48%	97.81%
NH/OPI	*	14.47%	N/A	66.67%	42.38%	N/A	33.33%	41.09%	N/A	*	2.07%	N/A	100.00%	99.23%	N/A
White	41.86%	45.26%	39.61%	44.19%	42.70%	45.65%	*	11.23%	13.71%	*	0.81%	1.04%	100.00%	98.60%	98.19%
Hispanic	44.44%	27.41%	27.03%	33.33%	47.55%	48.86%	*	22.68%	22.06%	*	2.36%	2.05%	100.00%	97.03%	97.38%
ME	25.00%	28.71%	29.01%	53.57%	48.31%	48.35%	*	21.12%	21.04%	*	1.86%	1.60%	100.00%	98.17%	97.95%
EDS	21.74%	19.04%	17.80%	53.62%	48.16%	46.23%	*	30.16%	32.75%	*	2.64%	3.22%	100.00%	97.39%	96.46%
Not EDS	40.74%	45.71%	39.91%	44.44%	42.85%	45.16%	*	10.72%	13.92%	*	0.72%	1.01%	100.00%	98.49%	99.09%
SWD	*	7.72%	7.77%	51.52%	41.17%	39.74%	45.45%	45.78%	46.67%	*	5.33%	5.82%	100.00%	94.25%	94.11%
Non-SWD	40.00%	39.54%	34.18%	48.89%	45.82%	46.66%	*	13.83%	17.85%	*	0.81%	1.30%	100.00%	98.77%	98.62%
LEP	*	4.54%	3.43%	66.67%	39.98%	33.56%	33.33%	50.83%	56.79%	*	4.65%	6.21%	100.00%	94.46%	96.40%
Not LEP	32.46%	37.31%	33.88%	48.25%	45.56%	47.27%	*	15.90%	17.45%	*	1.23%	1.40%	100.00%	98.37%	98.14%
Migrant	*	22.81%	14.35%	*	49.08%	44.71%	66.67%	25.81%	37.78%	*	2.30%	3.16%	100.00%	98.19%	98.74%
Not Migrant	30.77%	35.01%	31.35%	51.28%	44.91%	45.70%	*	18.59%	21.06%	*	1.49%	1.89%	100.00%	98.02%	97.87%
Female	35.00%	42.32%	37.21%	50.00%	42.91%	44.32%	*	13.87%	17.33%	*	0.90%	1.14%	100.00%	98.34%	98.21%
Male	25.40%	26.95%	23.64%	49.21%	47.19%	46.87%	*	23.74%	26.72%	*	2.12%	2.77%	100.00%	97.73%	97.65%

* Results cannot be published without releasing personally identifiable information based upon the EED reporting protocol

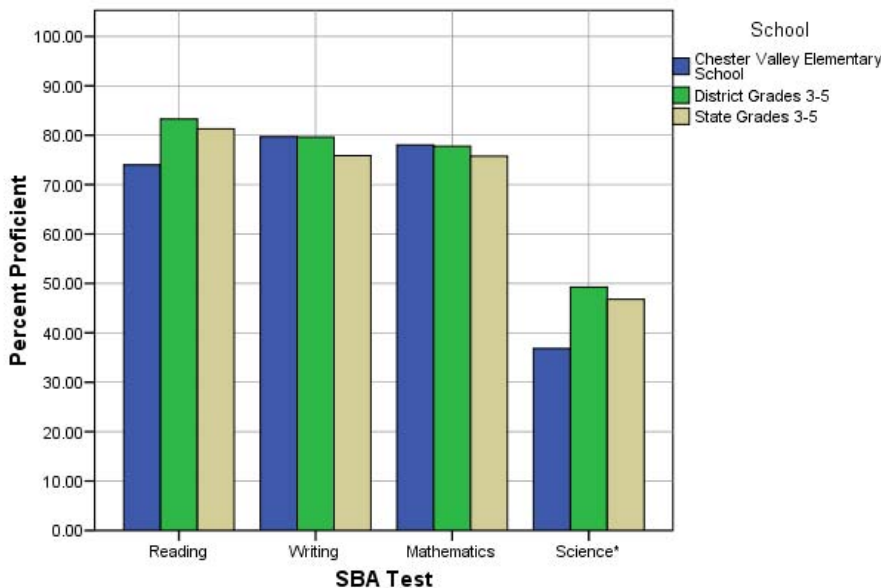
Mathematics: SBA Results Compared for Chester Valley Elementary School, District and State Grades 3 Through 5															
	% Advanced Proficient			% Proficient			% Below Proficient			% Far Below Proficient			% Tested		
	School	District	State	School	District	State	School	District	State	School	District	State	School	District	State
All Students	39.84%	39.81%	36.35%	38.21%	37.95%	39.40%	12.20%	12.04%	13.27%	9.76%	10.20%	10.98%	100.00%	98.53%	98.09%
AF AM	37.50%	18.70%	22.58%	50.00%	43.12%	43.10%	*	17.77%	16.07%	*	20.40%	18.24%	100.00%	98.18%	97.31%
AKNA/AI	17.65%	22.24%	18.10%	47.06%	39.64%	39.76%	*	20.22%	21.75%	*	17.90%	20.38%	100.00%	97.15%	97.73%
Asian	33.33%	37.60%	34.59%	55.56%	40.46%	40.53%	*	13.45%	13.70%	*	8.49%	11.18%	100.00%	99.34%	99.00%
NH/OPI	*	18.86%	N/A	55.56%	35.92%	N/A	*	19.90%	N/A	*	25.32%	N/A	100.00%	99.23%	N/A
White	58.14%	51.53%	46.28%	27.91%	35.15%	38.25%	*	7.83%	9.23%	*	5.49%	6.24%	100.00%	98.68%	98.14%
Hispanic	55.56%	31.50%	30.88%	*	40.45%	42.80%	*	14.80%	14.40%	*	13.25%	11.91%	100.00%	98.73%	98.52%
ME	28.57%	33.77%	35.82%	39.29%	41.28%	40.71%	*	13.44%	12.71%	*	11.51%	10.76%	100.00%	98.31%	98.00%
EDS	31.88%	24.23%	23.40%	39.13%	41.68%	41.35%	15.94%	17.02%	18.13%	13.04%	17.06%	17.13%	100.00%	98.22%	96.74%
Not EDS	50.00%	51.15%	46.42%	37.04%	35.24%	37.89%	7.41%	8.41%	9.49%	5.56%	5.21%	6.20%	100.00%	98.76%	99.18%
SWD	18.18%	12.61%	12.84%	33.33%	33.23%	33.93%	27.27%	22.71%	22.39%	21.21%	31.44%	30.84%	100.00%	94.36%	94.16%
Non-SWD	47.78%	44.89%	40.46%	40.00%	38.83%	40.36%	6.67%	10.04%	11.67%	5.56%	6.23%	7.51%	100.00%	99.36%	98.82%
LEP	*	8.77%	6.16%	66.67%	36.68%	34.87%	*	23.96%	27.40%	*	30.59%	31.57%	100.00%	97.80%	97.53%
Not LEP	42.98%	42.80%	40.49%	35.96%	38.07%	40.02%	11.40%	10.89%	11.33%	9.65%	8.24%	8.16%	100.00%	98.61%	98.17%
Migrant	*	31.88%	22.17%	*	45.18%	41.96%	50.00%	12.39%	19.35%	*	10.55%	16.52%	100.00%	98.64%	98.69%
Not Migrant	41.03%	40.15%	37.33%	38.46%	37.64%	39.23%	10.26%	12.02%	12.84%	10.26%	10.19%	10.60%	100.00%	98.53%	98.05%
Female	38.33%	41.04%	37.14%	41.67%	38.18%	39.82%	8.33%	11.24%	12.86%	11.67%	9.54%	10.18%	100.00%	98.77%	98.31%
Male	41.27%	38.62%	35.60%	34.92%	37.73%	39.01%	15.87%	12.81%	13.65%	7.94%	10.85%	11.75%	100.00%	98.31%	97.89%

* Results cannot be published without releasing personally identifiable information based upon the EED reporting protocol

Science: SBA Results Compared for Chester Valley Elementary School, District and State Grade 4															
	% Advanced Proficient			% Proficient			% Below Proficient			% Far Below Proficient			% Tested		
	School	District	State	School	District	State	School	District	State	School	District	State	School	District	State
All Students	15.79%	23.68%	22.1%	21.05%	25.57%	24.7%	36.84%	31.70%	31.3%	26.32%	19.06%	21.9%	100.00%	97.81%	95.35%
AF AM	*	9.18%	8.9%	*	18.84%	23.3%	*	39.13%	38.0%	*	32.85%	29.8%	100.00%	98.57%	94.49%
AKNA/AI	*	6.54%	6.8%	*	21.50%	14.2%	60.00%	42.99%	35.2%	*	28.97%	43.8%	100.00%	96.40%	94.98%
Asian	*	10.18%	13.4%	*	21.40%	19.4%	*	39.30%	37.5%	*	29.12%	29.7%	100.00%	98.28%	97.39%
NH/OPI	*	6.57%	N/A	*	8.03%	N/A	*	34.31%	N/A	*	51.09%	N/A	100.00%	98.56%	N/A
White	*	36.40%	32.3%	30.00%	29.08%	29.9%	30.00%	25.33%	27.3%	*	9.19%	10.5%	100.00%	97.87%	94.97%
Hispanic	*	16.17%	18.2%	*	26.15%	26.0%	*	32.08%	33.9%	*	25.61%	21.9%	100.00%	97.12%	96.39%
ME	*	16.06%	18.5%	*	26.12%	26.8%	44.44%	37.47%	35.9%	*	20.34%	18.7%	100.00%	98.32%	96.90%
EDS	*	8.34%	11.0%	*	22.44%	20.1%	35.29%	38.10%	34.7%	35.29%	31.12%	34.2%	100.00%	97.73%	94.99%
Not EDS	14.29%	35.00%	31.2%	28.57%	27.88%	28.5%	38.10%	26.97%	28.5%	19.05%	10.15%	11.9%	100.00%	97.87%	95.64%
SWD	*	8.38%	7.7%	*	16.38%	15.2%	50.00%	36.57%	36.6%	33.33%	38.67%	40.5%	100.00%	93.25%	91.70%
Non-SWD	23.08%	26.43%	24.7%	23.08%	27.22%	26.4%	30.77%	30.82%	30.4%	23.08%	15.53%	18.5%	100.00%	98.68%	96.04%
LEP	*	2.00%	1.5%	*	5.14%	3.8%	*	34.00%	28.3%	*	58.86%	66.5%	100.00%	96.15%	95.67%
Not LEP	17.65%	26.13%	25.2%	23.53%	27.88%	27.9%	41.18%	31.44%	31.8%	17.65%	14.55%	15.1%	100.00%	98.00%	95.30%
Migrant	*	9.70%	9.0%	*	26.87%	15.3%	*	39.55%	34.3%	*	23.88%	41.4%	100.00%	97.10%	97.32%
Not Migrant	13.89%	24.24%	23.0%	22.22%	25.51%	25.3%	38.89%	31.38%	31.1%	25.00%	18.86%	20.5%	100.00%	97.84%	95.21%
Female	*	22.73%	20.8%	*	25.78%	25.2%	50.00%	33.63%	32.6%	22.22%	17.87%	21.4%	100.00%	98.05%	95.43%
Male	20.00%	24.61%	23.4%	25.00%	25.36%	24.2%	25.00%	29.80%	30.1%	30.00%	20.23%	22.3%	100.00%	97.58%	95.27%

* Results cannot be published without releasing personally identifiable information based upon the EED reporting protocol

2007-08 SBA Results Compared for Chester Valley Elementary School, District and State



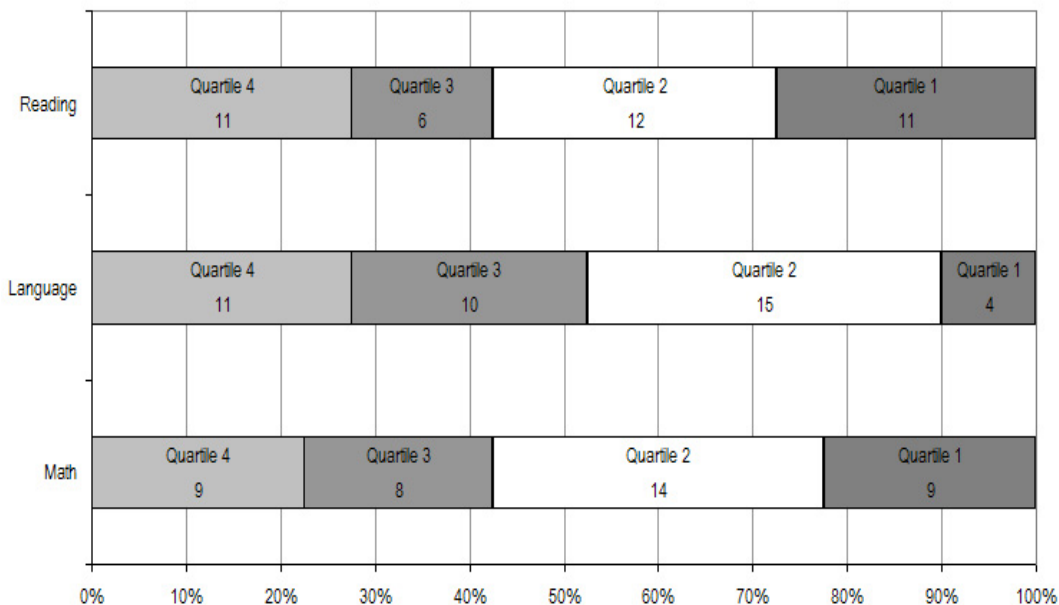
* 2007-08 was the first year Science was administered for grades 4, 8 and 10 on the SBA.

Chester Valley Elementary School TerraNova Grade 5 Percent in Each Quartile								
Reading	Above Average		Average				Below Average	
	4th Quartile (76-99 percentile)		3rd Quartile (51-75 percentile)		2nd Quartile (26-50 percentile)		1st Quartile (1-25 percentile)	
	School	District	School	District	School	District	School	District
07-08	27.50%	25.65%	15.00%	24.08%	30.00%	23.73%	27.50%	26.55%
06-07	22.6%	33.1%	19.4%	26.1%	45.2%	23.6%	12.9%	17.2%
05-06	24.4%	30.4%	26.7%	26.8%	28.9%	24.5%	20.0%	18.3%
04-05	14.6%	29.2%	24.4%	27.6%	39.0%	24.5%	22.0%	18.7%
03-04	20.0%	30.6%	43.3%	26.9%	13.3%	24.2%	23.3%	18.3%
Language								
07-08	27.50%	26.79%	25.00%	27.20%	37.50%	24.12%	10.00%	21.89%
06-07	29.0%	34.7%	19.4%	26.9%	38.7%	21.4%	12.9%	17.0%
05-06	35.6%	34.0%	24.4%	26.5%	22.2%	22.0%	17.8%	17.5%
04-05	22.0%	32.1%	22.0%	28.3%	36.6%	21.2%	19.5%	18.4%
03-04	30.0%	34.1%	33.3%	26.5%	20.0%	21.7%	16.7%	17.7%
Mathematics								
07-08	22.50%	25.45%	20.00%	26.40%	35.00%	24.47%	22.50%	23.68%
06-07	35.5%	29.7%	25.8%	31.6%	*	21.2%	*	17.4%
05-06	24.4%	28.4%	35.6%	31.9%	22.2%	22.3%	17.8%	17.5%
04-05	17.1%	26.9%	41.5%	31.1%	19.5%	22.9%	22.0%	19.1%
03-04	23.3%	28.3%	36.7%	29.3%	20.0%	22.6%	20.0%	19.8%

The double bold line indicates a change from the TerraNova 2nd edition to the TerraNova 3rd edition.

* Results cannot be published without releasing personally identifiable information based upon the EED reporting protocol

2007-08 TerraNova 3rd Edition Grade 5 Percent and Count of Students in Each Quartile For Chester Valley Elementary School



Climate Survey Results for Chester Valley Elementary School

The Anchorage School District administered the School Climate and Connectedness Surveys in spring 2008 to students in grades 5-12, all school staff and parents/guardians of students in grades K-12. The surveys were done to provide schools with information about perceptions and experiences related to school climate for use in setting school goals and redirecting resources. In the spring of 2008 grades 3 and 4 students were involved in a pilot survey for measuring school climate and connectedness. The results are currently under review by the American Institutes for Research.

Respondents were asked to answer a series of questions that were related to a certain concept. For each item, there were five options from which to choose a response. The answer options ranged from strongly disagree (1) to strongly agree (5).

Student Survey Response Rate			
	Chester Valley Elementary School	Overall Elementary Schools	District**
# Surveys Completed	38	5,579	21,629
# Reportable Surveys	38	4,969	18,654
# Students Enrolled*	40	6,331	28,945
Reportable Response Rate	95.00%	78.49%	64.45%

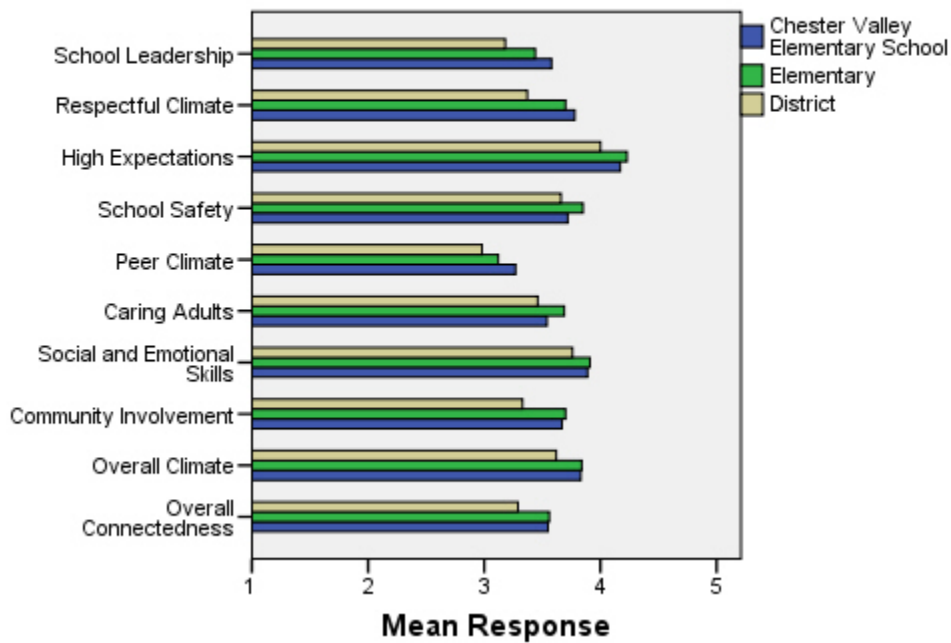
*Number enrolled as of April 1, 2008

**District data does not include KCC responses

Each question in the survey related to a factor or concept, and a score was calculated based on the mean response for the questions related to each factor. The factors measured in the survey were:

- **School Leadership and Student Involvement:** This factor reflects students' feelings about the decision making of school leaders as well as student participation in the school governance. Students selected responses between 1 and 5 where 1 indicates a low level of school leadership and student involvement and 5 indicates a high level of school leadership and student involvement.
- **Respectful Climate:** This factor reflects students' feelings about fairness of rules and respect for students' contributions. Students selected responses between 1 and 5 where 1 indicates a lack of a respectful climate and 5 indicates a highly respectful climate for students.
- **High Expectations:** This factor reflects students' feelings about their own expectations as well as those of adults in their school and community. Students selected responses between 1 and 5 where 1 indicates a lack of high expectations and 5 indicates a high level of high expectations.
- **School Safety:** This factor reflects students' feelings about bullies and gangs at school as well as general crime and violence in the community. Students selected responses between 1 and 5 where 1 indicates a low level of school safety and 5 indicates a high level of school safety.
- **Peer Climate:** This factor reflects students' feelings about how respectful students are to one another and how helpful students are to other students. Students selected responses between 1 and 5 where 1 indicates a more negative peer climate and 5 indicates a very positive peer climate at the school.
- **Caring Adults:** This factor reflects students' feelings about how close they feel to adults in the school. Students selected responses between 1 and 5 where 1 indicates a lack of caring adult relationships and 5 indicates strong caring adult relationships at the school.
- **Social and Emotional Learning:** This factor reflects students' ability to think about the consequences of their actions and to empathize with others. Students selected responses between 1 and 5 where 1 indicates that students at the school perceive themselves as having poorer social and emotional learning, and 5 indicates higher levels of social and emotional learning.
- **Community Involvement:** This factor reflects students' feelings about how supportive and welcoming the school is with parents and the community. Students selected responses between 1 and 5 where 1 indicates a less supportive and welcoming environment and 5 indicates a more supportive and welcoming environment.
- **Overall Climate:** The overall climate score was computed as the mean of three scales: school leadership, high expectations and school safety.
- **Overall Connectedness:** Overall connectedness score was computed as a mean of four scales: respectful climate, peer climate, caring adults and community involvement.

Climate and Connectedness Student Survey - Chester Valley



Student Survey Mean Response by Factors Related to School Climate - Overall District			
	Chester Valley Elementary School	Overall Elementary Schools	District
School Leadership	3.58	3.44	3.18
Respectful Climate	3.78	3.70	3.37
High Expectations	4.17	4.23	4.00
School Safety	3.72	3.85	3.66
Peer Climate	3.27	3.12	2.98
Caring Adults	3.54	3.69	3.46
Social and Emotional Skills	3.89	3.91	3.76
Community Involvement	3.67	3.70	3.33
Overall Climate	3.83	3.84	3.62
Overall Connectedness	3.55	3.56	3.29

Range is from a low of 1 to a high of 5

Students were also asked to answer questions related to school danger. The following table provides the responses for those questions:

Student Survey Results of the School Danger Questions - Percent of Students Responding in Each Category					
	0 Times	1-2 Times	3-6 Times	7-12 Times	> 12 Times
Chester Valley Elementary School					
Under the influence of drugs?	94.74%	2.63%	0.00%	0.00%	2.63%
Under the influence of alcohol?	92.11%	5.26%	2.63%	0.00%	0.00%
Destroy things (vandalism)?	39.47%	28.95%	18.42%	2.63%	10.53%
Get into fights?	23.68%	28.95%	39.47%	2.63%	5.26%
Steal things?	52.63%	34.21%	2.63%	0.00%	10.53%
Threaten or bully?	50.00%	31.58%	7.89%	2.63%	7.89%
Under the influence of inhalants?	81.58%	13.16%	0.00%	0.00%	5.26%
Carry weapons?	78.95%	15.79%	0.00%	0.00%	5.26%
Overall Elementary Schools					
Under the influence of drugs?	91.87%	5.65%	1.22%	0.31%	0.96%
Under the influence of alcohol?	91.42%	6.01%	1.16%	0.51%	0.90%
Destroy things (vandalism)?	46.82%	32.08%	12.45%	3.30%	5.36%
Get into fights?	22.32%	35.75%	22.56%	7.96%	11.41%
Steal things?	49.79%	27.92%	12.01%	4.33%	5.95%
Threaten or bully?	32.34%	28.83%	17.08%	7.78%	13.97%
Under the influence of inhalants?	71.03%	17.07%	6.14%	2.63%	3.12%
Carry weapons?	79.22%	15.35%	3.17%	0.59%	1.68%
District					
Under the influence of drugs?	60.45%	15.05%	9.54%	3.92%	11.04%
Under the influence of alcohol?	63.11%	16.37%	8.90%	4.43%	7.19%
Destroy things (vandalism)?	41.26%	29.47%	15.45%	5.88%	7.94%
Get into fights?	26.40%	35.20%	21.96%	7.11%	9.33%
Steal things?	44.80%	25.68%	13.81%	6.98%	8.74%
Threaten or bully?	32.21%	26.21%	16.68%	9.27%	15.63%
Under the influence of inhalants?	72.79%	14.21%	5.66%	2.48%	4.87%
Carry weapons?	69.45%	19.15%	5.34%	2.01%	4.06%

Student Survey Results of the Mean Factor Score by Ethnicity (Self-Reported)							
	AKNA/AI	AF AM	Hispanic	Asian/NH	White	Other	Multi-Ethnic
Chester Valley Elementary School							
School Leadership	3.69	3.50	4.10	3.43	3.77	4.30	3.33
Respectful Climate	4.12	3.67	3.67	3.53	4.06	4.33	3.43
High Expectations	4.16	4.18	4.14	4.06	4.33	4.43	4.16
School Safety	4.24	3.35	3.40	3.49	4.30	3.70	3.42
Peer Climate	3.20	2.93	3.30	3.49	3.13	4.20	3.24
Caring Adults	3.77	3.40	3.50	3.30	3.43	4.30	3.56
Social and Emotional Skills	3.81	3.72	4.27	3.79	4.04	4.47	3.81
Community Involvement	3.67	3.79	3.93	3.76	3.86	4.07	3.41
Overall Climate	4.01	3.68	3.88	3.70	4.13	4.14	3.64
Overall Connectedness	3.72	3.43	3.60	3.46	3.62	4.37	3.41
Overall Elementary Schools							
School Leadership	3.56	3.50	3.52	3.55	3.37	3.44	3.42
Respectful Climate	3.75	3.60	3.66	3.72	3.71	3.69	3.63
High Expectations	4.12	4.23	4.23	4.22	4.26	4.19	4.25
School Safety	3.75	3.63	3.73	3.68	4.03	3.66	3.79
Peer Climate	3.12	2.94	3.12	3.18	3.16	3.05	3.05
Caring Adults	3.64	3.73	3.64	3.59	3.74	3.60	3.76
Social and Emotional Skills	3.86	3.84	3.91	3.95	3.93	3.90	3.89
Community Involvement	3.66	3.60	3.67	3.66	3.75	3.66	3.70
Overall Climate	3.81	3.79	3.84	3.81	3.89	3.76	3.82
Overall Connectedness	3.56	3.49	3.51	3.53	3.60	3.49	3.56
District							
School Leadership	3.33	3.14	3.19	3.28	3.14	3.17	3.15
Respectful Climate	3.48	3.18	3.32	3.39	3.39	3.37	3.33
High Expectations	3.98	3.94	3.96	4.02	4.02	4.00	4.01
School Safety	3.60	3.48	3.55	3.47	3.78	3.51	3.62
Peer Climate	3.01	2.85	2.94	3.05	3.00	2.92	2.93
Caring Adults	3.49	3.43	3.37	3.33	3.51	3.42	3.46
Social and Emotional Skills	3.73	3.66	3.73	3.81	3.78	3.75	3.74
Community Involvement	3.37	3.22	3.31	3.29	3.34	3.34	3.31
Overall Climate	3.64	3.52	3.57	3.59	3.65	3.56	3.60
Overall Connectedness	3.33	3.17	3.24	3.26	3.31	3.26	3.27

Staff Survey Response Rate			
	Chester Valley Elementary School	Overall Elementary Schools	District**
# Surveys Completed	27	1,634	2,980
# Reportable Surveys	27	1,628	2,968
# Staff Members*	36	2,967	5,549
Reportable Response Rate	75.00%	54.87%	53.49%

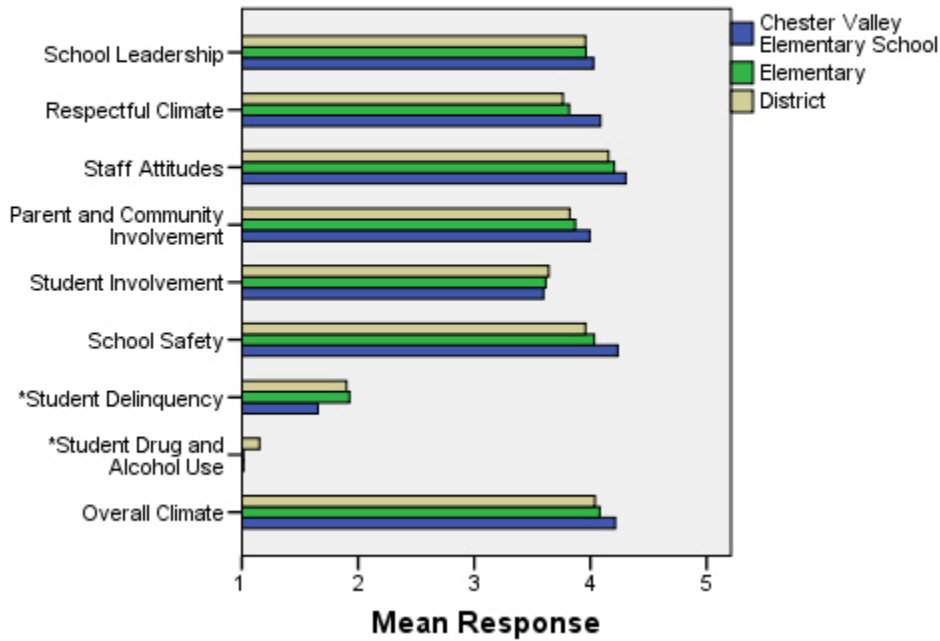
*Number staff as of April 1, 2008

**Includes KCC responses

Each question in the survey related to a factor or concept, and a score was calculated based on the mean response for the questions related to each factor. The factors were:

- **School Leadership:** This factor reflects staff members' feelings about the decision making of school leaders as well as the fairness of school rules. Staff members selected responses between 1 and 5 where 1 indicates a low level of school leadership and 5 indicates a high level of school leadership.
- **Respectful Climate:** This factor reflects staff members' feelings about how students treat each other and how well students and staff members treat one another. Staff members selected responses between 1 and 5 where 1 indicates a low level of respect and 5 indicates a high level.
- **Staff Attitudes:** This scale reflects staff members' feelings about the competence of teachers as well as how positive their attitudes are towards their jobs. Staff members selected responses between 1 and 5 where 1 indicates more negative staff attitudes and 5 indicates highly positive staff attitudes.
- **Parent and Community Involvement:** This factor reflects staff members' feelings about how accessible the school is for parents as well as how connected adults in the community are to the school. Staff members selected responses between 1 and 5 where 1 indicates a low level of parent and community involvement and 5 indicates a high level of parent and community involvement.
- **Student Involvement:** This factor reflects staff members' feeling about how involved students are in the decision making process. Staff members selected responses between 1 and 5 where 1 indicates a low level of student involvement and 5 indicates a high level of student involvement.
- **School Safety:** This factor reflects staff members' feelings about the impact of gangs and bullies as well as general crime and violence in the community. Staff members selected responses between 1 and 5 where 1 indicates a low level school safety and 5 indicates a high level of school safety.
- **Student Delinquency:** This factor uses staff members' reports of observing students getting into fights, stealing and bullying. The student delinquency and student drug and alcohol use scales differ from the other factors since the higher the score is the more negative the response. Staff members selected responses between 1 and 5 where 1 indicates a low level of student delinquency and 5 indicates a high level of student delinquency.
- **Student Drug and Alcohol Use:** This factor uses staff members' reports of observing students under the influence of drugs or alcohol. The student delinquency and student drug and alcohol use scales differ from the other factors since the higher the score is the more negative the response. Staff members selected responses between 1 and 5 where 1 indicates a low level of student drug and alcohol use and 5 indicates a high level of student drug and alcohol use.
- **Overall Climate:** Computed as the mean of 8 scales: school leadership, respectful climate, staff attitudes, parent and community involvement, student involvement, school safety, student delinquency, and drug and alcohol use scores.

Climate and Connectedness Staff Survey - Chester Valley



Range is from a low of 1 to a high of 5

*Student Drug and Alcohol Use and Student Delinquency factor scale scores differ from other factors since the higher the score is the more negative the response.

Staff members were also asked to answer questions related to school danger. The following table provides the responses for those questions:

Staff Survey Results of the School Danger Questions - Percent of Staff Responding in Each Category					
	0 Times	1-2 Times	3-6 Times	7-12 Times	> 12 Times
Chester Valley Elementary School					
Under the influence of drugs?	96.00%	4.00%	0.00%	0.00%	0.00%
Under the influence of alcohol?	100.00%	0.00%	0.00%	0.00%	0.00%
Destroy things (vandalism)?	44.00%	52.00%	4.00%	0.00%	0.00%
Get into fights?	36.00%	40.00%	20.00%	4.00%	0.00%
Steal things?	40.00%	52.00%	8.00%	0.00%	0.00%
Threaten or bully?	32.00%	40.00%	20.00%	8.00%	0.00%
Under the influence of inhalants?	100.00%	0.00%	0.00%	0.00%	0.00%
Carry weapons?	96.00%	4.00%	0.00%	0.00%	0.00%
Overall Elementary Schools					
Under the influence of drugs?	98.39%	1.47%	0.15%	0.00%	0.00%
Under the influence of alcohol?	98.97%	0.96%	0.07%	0.00%	0.00%
Destroy things (vandalism)?	40.04%	37.02%	16.00%	4.13%	2.80%
Get into fights?	32.16%	38.18%	19.24%	5.58%	4.85%
Steal things?	38.65%	40.63%	13.96%	4.56%	2.20%
Threaten or bully?	20.00%	36.03%	23.38%	10.59%	10.00%
Under the influence of inhalants?	98.90%	0.95%	0.15%	0.00%	0.00%
Carry weapons?	89.94%	8.96%	1.03%	0.07%	0.00%
District					
Under the influence of drugs?	82.61%	11.54%	4.11%	1.19%	0.55%
Under the influence of alcohol?	86.69%	10.21%	2.34%	0.60%	0.16%
Destroy things (vandalism)?	38.03%	36.81%	16.05%	5.07%	4.04%
Get into fights?	35.38%	38.78%	16.46%	4.83%	4.55%
Steal things?	41.82%	37.07%	14.02%	4.28%	2.81%
Threaten or bully?	22.88%	37.15%	21.97%	8.96%	9.04%
Under the influence of inhalants?	97.27%	2.42%	0.24%	0.04%	0.04%
Carry weapons?	88.47%	10.26%	1.11%	0.08%	0.08%

Staff Survey Results of the Mean Factor Score by Ethnicity (Self-Reported)						
	AKNA/AI	AF AM/Black	Hispanic	Asian/NH	White	Multi-Ethnic
Chester Valley Elementary School						
School Leadership	***	4.06	3.75	***	4.04	***
Respectful Climate	***	4.30	3.40	***	4.10	***
Staff Attitudes	***	4.10	4.00	***	4.34	***
Parent and Community Involvement	***	4.14	3.86	***	3.99	***
Student Involvement	***	3.50	4.00	***	3.59	***
School Safety	***	4.60	4.00	***	4.21	***
* Student Delinquency	***	1.80	1.20	***	1.66	***
* Student Drug and Alcohol Use	***	1.00	1.00	***	1.02	***
Overall Climate	***	4.24	4.10	***	4.22	***
Overall Elementary Schools						
School Leadership	4.10	4.13	4.11	4.17	3.96	4.06
Respectful Climate	3.74	3.99	3.87	4.06	3.81	3.88
Staff Attitudes	4.15	4.23	4.30	4.24	4.21	4.31
Parent and Community Involvement	3.86	4.06	3.97	3.99	3.87	3.91
Student Involvement	3.78	3.66	3.73	3.81	3.61	3.71
School Safety	3.92	4.10	4.16	3.93	4.04	4.05
* Student Delinquency	1.79	1.61	1.65	1.54	1.97	2.13
* Student Drug and Alcohol Use	1.00	1.00	1.01	1.03	1.01	1.01
Overall Climate	4.08	4.18	4.23	4.24	4.07	4.13
District						
School Leadership	3.99	3.99	4.13	4.15	3.96	4.06
Respectful Climate	3.66	3.83	3.84	3.96	3.76	3.84
Staff Attitudes	4.06	4.11	4.27	4.22	4.16	4.29
Parent and Community Involvement	3.75	3.91	3.94	3.93	3.82	3.85
Student Involvement	3.62	3.67	3.85	3.88	3.64	3.72
School Safety	3.82	3.94	4.06	3.94	3.97	3.94
* Student Delinquency	1.88	1.90	1.67	1.61	1.91	2.05
* Student Drug and Alcohol Use	1.12	1.26	1.03	1.16	1.15	1.13
Overall Climate	3.96	4.04	4.20	4.18	4.04	4.09

*Student Drug and Alcohol Use and Student Delinquency factor scale scores differ from other factors since the higher the score is the more negative the response.

**Staff survey results do not include an 'Other' ethnicity category since staff in that category all chose at least one other ethnicity in addition to 'Other' and were included in the 'Multi-Ethnic' category as a result.

***Results can not be calculated because of missing responses

The response rate is not high enough to provide statistically reliable results for Chester Valley Elementary School's Parent/Guardian Survey Results.