

College Gate Elementary School Overview

Statement of Program

College Gate is a neighborhood elementary school that enjoys a strong partnership with parents and our PTA. We provide a comprehensive instructional program for students in grades K-6. Our program emphasizes academic excellence, responsibility, decision-making and meeting social-emotional needs. We strive to help each student be the best he or she can be. We focus on reading, mathematics, writing and higher-level thinking across the curriculum.

Our two computer labs offer students weekly access to word-processing, report writing and information through the Internet. All classes conduct both a school service and a community service project as a part of citizenship development. We offer a full-day kindergarten program, a first-grade multi-sensory methodology classroom, bilingual tutorial services, the Creating Successful Futures Program for K-3, as well as a variety of special education services.

The YMCA conducts a before and after-school program available to all parents. The school staff includes classroom teachers, a principal, librarian, physical education teacher, music teacher, special education teachers and aides, speech/language specialist, bilingual tutors, nurse, art teacher, psychologist and sixth-grade band and orchestra teachers. College Gate has a dedicated partnership with several community organizations that support students in the academic and artistic arenas.

From the School Report Card

School Goals	
Goal	Level of Achievement
Student proficiency levels for grades 4-6 on the district and state reading assessment will increase by at least 2 percent. Proficiency levels for all other grades will increase by 1 percent.	Partially Attained
Scores on the state writing assessment will increase by at least 1 percent for each grade.	Partially Attained
Student and parent awareness of school goals and expectations will improve by following Social and Emotional Learning self-awareness standards.	Attained

From the School Report Card

Budget*	
2006-07 Actual Expenditures	\$2,465,767
2007-08 Revised Budgeted Amount	\$2,917,121
2008-09 Proposed Budget	\$3,325,345

*Dollars budgeted or expended are general fund only
From IFAS

College Gate Elementary School Characteristics			
	School	District	Source of Information
Membership	410	48,858	Fall OASIS
Capacity	83.71%	N/A	2008-18 ASD Capital Improvement Plan
Attendance Rate	93.99%	92.83%	NCLB Summer Data Collection
Retention Rate K-8	1.51%	0.60%	SMS and NCLB Summer Data Collection
Transiency Rate	24.95%	26.07%	NCLB Summer Data Collection
Economically Disadvantaged	179	17,717	Fall OASIS
Average Weekly Volunteer Hours	50	4,660	Department of Education Report Card Report
Students Taking the Alternate Assessment	0	228	SMS
Change in Enrollment	17.14%	-0.76%	Fall Oasis

Teacher Qualification				
Number of Teachers	Percent Fully Licensed	Percent With Advanced Degrees	Number Nationally Board Certified	Percent of Classes Taught by "Highly Qualified Teachers"
38	100.00%	44.73%	0	96.66%

College Gate Elementary School Business Partnerships
Lowe's, Tudor Road; Stellar Designs; First National Bank of Alaska, Parkway branch

From the School Report Card

Ethnicity Report							
African-American/Black	Alaska Native/American Indian	Asian	Native Hawaiian/Other Pacific Islander	White	Hispanic	Multi-Ethnic	Total
43	43	26	19	152	38	89	410

From Fall Oasis

Full Academic Year		
Students Enrolled	Students Enrolled for FAY	Percent FAY
390	363	93.08%

From participation file (Grades 3-10)

College Gate Elementary School
2007-08 Adequate Yearly Progress
Status Report

Does Not Meet AYP
Level 1

AMO For Language Arts: 77.18%
AMO For Mathematics: 66.09%

Group	Participation Rate				"FAY" (D) Tested & Enrolled "FAY"	Language Arts Performance				Mathematics Performance			
	(A) Number Enrolled	(B) Number Tested	Participation Rate (%)	(C) Participation Rate Met		(E) Proficient on LA	(F) Percent Proficient on LA	(G) LA Target	(H) Met AMO for LA	(I) Proficient on Mathematics	(J) Percent Proficient in Mathematics	(K) Mathematics Target	(L) Met AMO for Mathematics
All Students	220	220	100%	Yes	211	174	82.5%	70.4%	Yes	153	72.5%	58.5%	Yes
AF AM	20	20	N/A	N/A	N/A	N/A	N/A	N/A	N/A	N/A	N/A	N/A	N/A
AKNA/AI	24	24	100%	Yes	N/A	N/A	N/A	N/A	N/A	N/A	N/A	N/A	N/A
Asian/NH/OPI	23	23	100%	Yes	N/A	N/A	N/A	N/A	N/A	N/A	N/A	N/A	N/A
White	86	86	100%	Yes	81	73	90.1%	66.3%	Yes	67	82.7%	53.8%	Yes
Hispanic	20	20	N/A	N/A	N/A	N/A	N/A	N/A	N/A	N/A	N/A	N/A	N/A
ME	47	47	100%	Yes	46	36	78.3%	62.8%	Yes	30	65.2%	49.8%	Yes
EDS	91	91	100%	Yes	84	66	78.6%	66.5%	Yes	56	66.7%	54.1%	Yes
SWD	46	46	100%	Yes	44	22	50%	62.4%	Yes-SH	14	31.8%	49.5%	No
LEP	29	29	100%	Yes	27	19	70.4%	58.4%	Yes	16	59.3%	44.9%	Yes

Attendance Rate: Met

94.0% (Threshold is 85%)

N/A is used to indicate:

- (1) Subgroups with 20 or fewer students enrolled on the first day of testing shall not be included in participation rate calculation.
- (2) Subgroups with 25 or fewer students enrolled for the "full academic year" shall not have the performance score computed.

* For the groups where the number enrolled is less than or equal to 40, participation is met when no more than two miss the test. Groups can also meet this target using the average of the past two or three years.

** When a group achieves a "Yes" without meeting the listed target, it has done so using either the 99% confidence interval or Safe Harbor.

*** The results cannot be published without releasing personally identifiable information based upon the EED reporting protocol.

This document was prepared by the ASD Assessment and Evaluation Department.

7/10/2008

College Gate Elementary School
2007-08 Adequate Yearly Progress
Growth Report

The AYP growth reports are generated by the Alaska State Department of Education and Early Development. The reports can be found online at: http://www.asdk12.org/depts/assess_eval/AYP/State_AS_D_AYG_0708.pdf

SBA Proficiency Comparison by Grade for College Gate Elementary School																
	Reading Percent Proficient				Writing Percent Proficient				Mathematics Percent Proficient				Science* Percent Proficient			
	04-05	05-06	06-07	07-08	04-05	05-06	06-07	07-08	04-05	05-06	06-07	07-08	04-05	05-06	06-07	07-08
All Students	83.41%	80.34%	84.70%	84.02%	79.15%	80.90%	81.22%	81.19%	78.67%	77.97%	80.22%	73.73%	N/A	N/A	N/A	50.00%
Grade 3	83.33%	78.57%	87.04%	82.46%	80.95%	78.57%	85.19%	84.21%	88.10%	83.33%	88.89%	78.57%	N/A	N/A	N/A	N/A
Grade 4	81.82%	92.50%	81.63%	87.50%	84.09%	95% or more	83.33%	83.64%	81.82%	87.50%	73.47%	70.91%	N/A	N/A	N/A	50.00%
Grade 5	86.15%	76.32%	95% or more	81.13%	83.08%	76.32%	85.37%	80.77%	75.38%	76.32%	85.37%	75.00%	N/A	N/A	N/A	N/A
Grade 6	81.67%	75.86%	73.68%	84.91%	70.00%	75.86%	68.42%	75.93%	73.33%	68.42%	71.05%	70.37%	N/A	N/A	N/A	N/A

* 2007-08 was the first year Science was administered for grades 4, 8 and 10 on the SBA.

SBA Proficient & Not Proficient by NCLB Groups for College Gate Elementary School								
	Reading		Writing		Mathematics		Science**	
	Percent Proficient	Percent Not Proficient	Percent Proficient	Percent Not Proficient	Percent Proficient	Percent Not Proficient	Percent Proficient	Percent Not Proficient
All Students	84.02%	15.98%	81.19%	18.81%	73.73%	26.27%	50.00%	50.00%
AF AM	90% or more	10% or fewer	80.00%	20.00%	75.00%	25.00%	37.50%	62.50%
AKNA/AI	75.00%	25.00%	66.67%	33.33%	50.00%	50.00%	42.86%	57.14%
Asian	80% or more	20% or fewer	80% or more	20% or fewer	80% or more	20% or fewer	*	*
NH/OPI	69.23%	30.77%	69.23%	30.77%	69.23%	30.77%	*	*
White	91.76%	8.24%	87.06%	12.94%	83.33%	16.67%	73.33%	26.67%
Hispanic	75.00%	25.00%	85.00%	15.00%	70.00%	30.00%	57.14%	42.86%
ME	76.60%	23.40%	78.26%	21.74%	67.39%	32.61%	36.36%	63.64%
EDS	79.12%	20.88%	74.44%	25.56%	68.54%	31.46%	40.00%	60.00%
Non-EDS	87.50%	12.50%	85.94%	14.06%	77.34%	22.66%	58.06%	41.94%
SWD	40.00%	60.00%	41.46%	58.54%	22.50%	77.50%	80% or fewer	20% or more
Non-SWD	93.85%	6.15%	90.40%	9.60%	85.31%	14.69%	56.52%	43.48%
LEP	56.25%	43.75%	56.25%	43.75%	37.50%	62.50%	60% or fewer	40% or more
Not LEP	86.21%	13.79%	83.17%	16.83%	76.62%	23.38%	54.90%	45.10%
Migrant	78.57%	21.43%	80% or more	20% or fewer	78.57%	21.43%	*	*
Not Migrant	84.39%	15.61%	80.88%	19.12%	73.40%	26.60%	49.06%	50.94%
Female	91.09%	8.91%	88.00%	12.00%	79.00%	21.00%	43.48%	56.52%
Male	77.97%	22.03%	75.42%	24.58%	69.23%	30.77%	54.55%	45.45%

* Results cannot be published without releasing personally identifiable information based upon the EED reporting protocol

** 2007-08 was the first year Science was administered for grades 4, 8 and 10 on the SBA.

SBA Mean Scale Score Comparison by NCLB Groups for College Gate Elementary School								
	Reading		Writing		Mathematics		Science***	
	06-07	07-08	06-07	07-08	06-07	07-08	06-07	07-08
All Students	388.95	381.44	390.38	379.18	369.49	363.36	N/A	307.02
AF AM	380.21	383.85	380.11	380.25	346.75	345.65	N/A	269.63
AKNA/AI	362.65	347.92	366.29	340.58	347.23	313.21	N/A	299.86
Asian**	382.05	386.80	385.80	394.70	368.20	409.30	N/A	*
NH/OPI**	N/A	363.46	N/A	356.08	N/A	367.54	N/A	*
White	416.17	400.16	414.21	393.26	396.94	386.39	N/A	335.00
Hispanic	401.33	373.95	400.22	389.55	368.80	354.35	N/A	326.00
ME	355.21	370.70	363.67	371.48	345.04	347.91	N/A	289.27
EDS	379.93	366.03	380.07	361.81	356.13	343.85	N/A	287.40
Non-EDS	396.28	392.40	398.92	391.39	380.69	376.92	N/A	322.84
SWD	314.68	304.75	321.16	304.02	311.64	283.23	N/A	238.90
Non-SWD	407.77	398.58	408.17	396.59	383.75	381.47	N/A	321.83
LEP	375.33	316.38	373.89	314.19	354.68	292.06	N/A	241.20
Not LEP	391.31	386.57	393.27	384.33	372.18	369.03	N/A	313.47
Migrant	373.25	398.86	415.75	379.50	376.00	362.50	N/A	*
Not Migrant	389.30	380.25	389.81	379.16	369.34	363.42	N/A	305.91
Female	395.87	391.36	402.33	394.41	364.01	367.71	N/A	301.35
Male	382.26	372.96	378.56	366.27	374.97	359.64	N/A	310.97

* Results cannot be published without releasing personally identifiable information based upon the EED reporting protocol

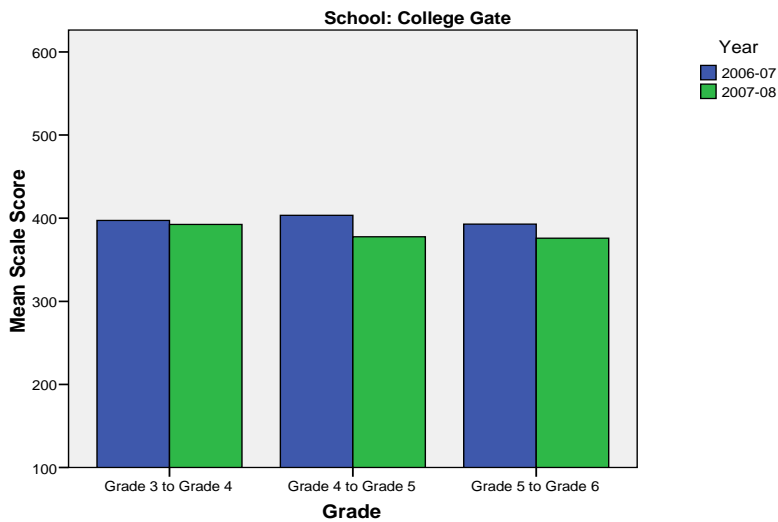
** Prior to 2007-08 the Asian category includes Native Hawaiian/Other Pacific Islander. In 2007-08 Native Hawaiian/Other Pacific Islander is a separate ethnic category.

*** 2007-08 was the first year Science was administered for grades 4, 8 and 10 on the SBA.

College Gate Elementary School SBA Change Average Scale Score by NCLB Groups: Reading									
	Average Scale Score of Students Tested in District Both Years			Average Scale Score of Students Tested in District Both Years			Average Scale Score of Students Tested in District Both Years		
	Grade 3 in 06-07	Grade 4 in 07-08	Difference	Grade 4-in 06-07	Grade 5 in 07-08	Difference	Grade 5-in 06-07	Grade 6 in 07-08	Difference
All Students	397.30	392.48	-4.81	403.51	377.66	-25.85	392.89	375.87	-17.02
AF AM	393.29	392.71	-0.57	422.60	385.20	-37.40	*	*	*
AKNA/AI	385.29	372.57	-12.71	315.40	285.40	-30.00	*	*	*
Asian	*	*	*	*	*	*	*	*	*
NH/OPI	*	*	*	*	*	*	*	*	*
White	418.00	416.00	-2.00	439.62	412.24	-27.38	410.57	386.71	-23.86
Hispanic	427.33	426.83	-0.50	*	*	*	*	*	*
ME	374.45	379.27	4.82	360.60	345.50	-15.10	376.00	361.45	-14.55
EDS	372.38	367.00	-5.38	400.07	357.67	-42.40	381.18	369.35	-11.82
Non-EDS	417.23	412.87	-4.37	405.13	387.03	-18.09	400.00	379.82	-20.18
SWD	314.56	312.22	-2.33	314.82	301.55	-13.27	332.17	310.00	-22.17
Non-SWD	413.84	408.53	-5.31	430.61	400.92	-29.69	402.23	386.00	-16.23
LEP	*	*	*	*	*	*	*	*	*
Not LEP	402.56	400.82	-1.74	405.13	379.13	-26.00	397.23	379.56	-17.67
Migrant	*	*	*	*	*	*	*	*	*
Not Migrant	397.14	392.04	-5.10	403.51	377.66	-25.85	394.43	374.57	-19.86
Female	392.48	394.57	2.09	420.17	398.48	-21.70	401.17	379.54	-21.62
Male	400.87	390.94	-9.94	387.54	357.71	-29.83	383.43	371.67	-11.76

* Results cannot be published without releasing personally identifiable information based upon the EED reporting protocol

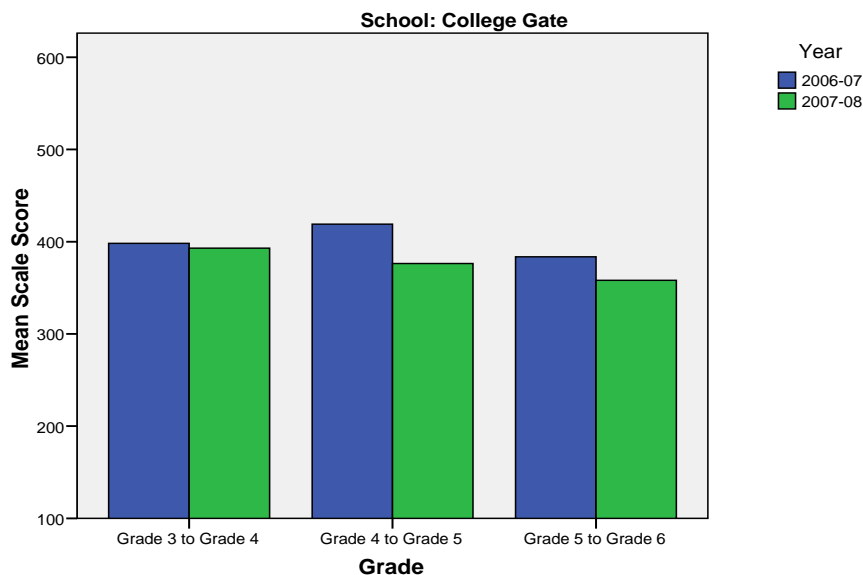
Change in Mean Scale Score in SBA Reading by Grade Between 2006-07 and 2007-08



College Gate Elementary School SBA Change Average Scale Score by NCLB Groups: Writing									
	Average Scale Score of Students Tested in District Both Years			Average Scale Score of Students Tested in District Both Years			Average Scale Score of Students Tested in District Both Years		
	Grade 3 in 06-07	Grade 4 in 07-08	Difference	Grade 4- in 06-07	Grade 5 in 07-08	Difference	Grade 5- in 06-07	Grade 6 in 07-08	Difference
All Students	398.15	392.96	-5.19	418.98	376.31	-42.67	383.74	358.02	-25.72
AF AM	401.00	383.29	-17.71	*	*	*	*	*	*
AKNA/AI	381.29	364.43	-16.86	315.20	289.20	-26.00	*	*	*
Asian	*	*	*	*	*	*	*	*	*
NH/OPI	*	*	*	*	*	*	*	*	*
White	422.29	418.86	-3.43	455.20	400.05	-55.15	383.14	355.68	-27.45
Hispanic	424.00	453.50	29.50	*	*	*	*	*	*
ME	367.50	374.30	6.80	379.90	357.70	-22.20	384.18	350.45	-33.73
EDS	378.42	367.25	-11.17	418.57	348.79	-69.79	371.59	345.82	-25.76
Non-EDS	415.07	415.00	-0.07	419.16	388.74	-30.42	390.86	365.17	-25.69
SWD	312.00	315.56	3.56	329.82	306.91	-22.91	333.14	288.43	-44.71
Non-SWD	416.19	409.16	-7.02	447.82	398.76	-49.06	392.82	370.51	-22.31
LEP	*	*	*	*	*	*	*	*	*
Not LEP	402.25	399.81	-2.44	420.86	378.48	-42.39	387.02	361.23	-25.80
Migrant	*	*	*	*	*	*	*	*	*
Not Migrant	398.27	393.08	-5.18	418.98	376.31	-42.67	383.19	357.44	-25.74
Female	399.41	411.64	12.23	439.74	393.13	-46.61	396.71	371.88	-24.83
Male	397.23	379.27	-17.97	397.27	358.73	-38.55	369.59	342.91	-26.68

* Results cannot be published without releasing personally identifiable information based upon the EED reporting protocol

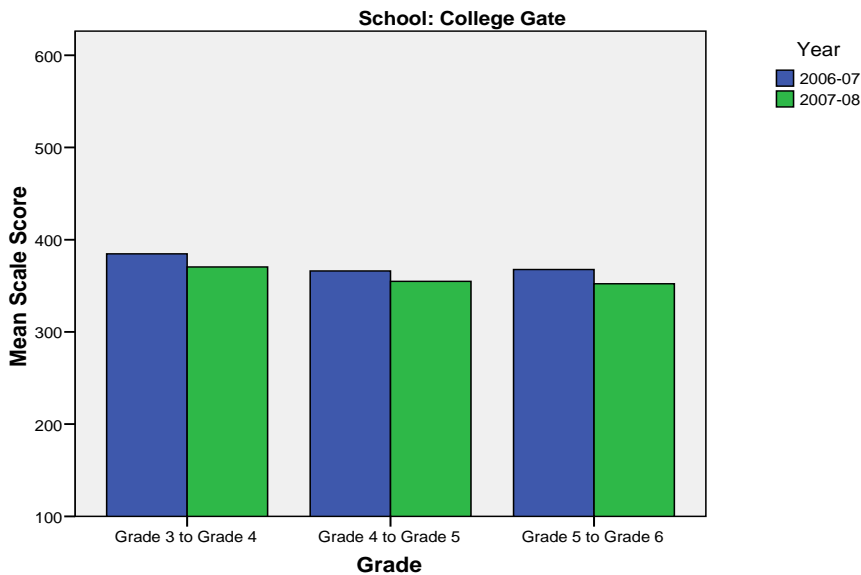
Change in Mean Scale Score in SBA Writing by Grade between 2006-07 and 2007-08



College Gate Elementary School SBA Change Average Scale Score by NCLB Groups: Mathematics									
	Average Scale Score of Students Tested in District Both Years			Average Scale Score of Students Tested in District Both Years			Average Scale Score of Students Tested in District Both Years		
	Grade 3 in 06-07	Grade 4 in 07-08	Difference	Grade 4- in 06-07	Grade 5 in 07-08	Difference	Grade 5- in 06-07	Grade 6 in 07-08	Difference
All Students	384.67	370.44	-14.23	366.21	354.74	-11.47	367.65	352.17	-15.48
AF AM	376.14	338.86	-37.29	372.00	349.40	-22.60	*	*	*
AKNA/AI	360.71	337.14	-23.57	250.40	240.80	-9.60	*	*	*
Asian	*	*	*	*	*	*	*	*	*
NH/OPI	*	*	*	*	*	*	*	*	*
White	400.21	392.79	-7.43	409.20	397.05	-12.15	380.95	347.32	-33.64
Hispanic	421.67	417.00	-4.67	*	*	*	*	*	*
ME	377.90	347.00	-30.90	330.10	315.30	-14.80	348.82	343.55	-5.27
EDS	369.04	336.46	-32.58	346.47	316.73	-29.73	353.82	356.35	2.53
Non-EDS	398.07	399.57	1.50	375.47	372.56	-2.91	375.76	349.72	-26.03
SWD	301.67	274.00	-27.67	293.18	293.73	0.55	334.71	276.14	-58.57
Non-SWD	402.05	390.63	-11.42	388.53	373.39	-15.14	373.56	365.82	-7.74
LEP	*	*	*	*	*	*	*	*	*
Not LEP	389.13	374.33	-14.79	372.29	360.13	-12.16	373.32	355.43	-17.89
Migrant	*	*	*	*	*	*	*	*	*
Not Migrant	384.61	369.24	-15.37	366.21	354.74	-11.47	367.81	352.60	-15.21
Female	377.05	366.18	-10.86	370.13	364.96	-5.17	364.08	356.21	-7.88
Male	390.27	373.57	-16.70	362.13	344.09	-18.04	371.55	347.77	-23.77

* Results cannot be published without releasing personally identifiable information based upon the EED reporting protocol

Change in Mean Scale Score in SBA Mathematics by Grade between 2006-07 and 2007-08



Reading: SBA Results Compared for College Gate Elementary School, District and State Grades 3 Through 6															
	% Advanced Proficient			% Proficient			% Below Proficient			% Far Below Proficient			% Tested		
	School	District	State	School	District	State	School	District	State	School	District	State	School	District	State
All Students	42.01%	39.70%	35.67%	42.01%	43.89%	45.50%	11.87%	11.60%	13.02%	4.11%	4.80%	5.80%	99.55%	98.15%	97.98%
AF AM	30.00%	20.73%	22.99%	65.00%	54.18%	53.49%	*	17.79%	16.46%	*	7.30%	7.06%	100.00%	98.04%	97.49%
AKNA/AI	25.00%	20.23%	14.62%	50.00%	51.11%	48.17%	*	18.54%	24.83%	*	10.11%	12.37%	100.00%	96.88%	97.59%
Asian	50.00%	30.22%	28.26%	40.00%	48.71%	51.04%	*	15.32%	15.32%	*	5.75%	5.38%	100.00%	97.64%	97.67%
NH/OPI	46.15%	14.67%	N/A	23.08%	51.03%	N/A	*	24.59%	N/A	*	9.71%	N/A	100.00%	98.98%	N/A
White	49.41%	52.75%	47.28%	42.35%	38.06%	42.41%	*	6.69%	7.27%	*	2.50%	3.03%	98.84%	98.68%	98.28%
Hispanic	45.00%	32.35%	31.74%	30.00%	46.43%	48.60%	*	14.67%	13.66%	*	6.55%	6.00%	100.00%	97.14%	97.32%
ME	38.30%	33.26%	34.76%	38.30%	48.25%	47.75%	*	13.47%	12.80%	*	5.01%	4.70%	100.00%	98.15%	98.03%
EDS	29.67%	22.85%	21.47%	49.45%	49.71%	48.65%	14.29%	19.04%	20.31%	6.59%	8.40%	9.57%	100.00%	97.50%	96.44%
Not EDS	50.78%	51.44%	46.31%	36.72%	39.84%	43.15%	10.16%	6.42%	7.56%	2.34%	2.30%	2.98%	99.22%	98.61%	99.16%
SWD	12.50%	10.08%	9.29%	27.50%	37.10%	37.96%	37.50%	32.15%	31.20%	22.50%	20.67%	21.55%	97.56%	94.28%	93.60%
Non-SWD	48.60%	45.02%	40.09%	45.25%	45.12%	46.77%	*	7.91%	9.98%	*	1.95%	3.17%	100.00%	98.88%	98.75%
LEP	18.75%	4.97%	3.12%	37.50%	39.93%	38.06%	*	37.14%	38.40%	*	17.96%	20.42%	100.00%	94.25%	96.11%
Not LEP	43.84%	42.78%	39.95%	42.36%	44.25%	46.48%	10.34%	9.33%	9.68%	3.45%	3.64%	3.88%	99.51%	98.51%	98.23%
Migrant	42.86%	27.01%	17.29%	35.71%	50.34%	48.58%	*	16.44%	23.78%	*	6.21%	10.35%	100.00%	98.35%	98.50%
Not Migrant	41.95%	40.26%	36.97%	42.44%	43.61%	45.29%	11.22%	11.38%	12.26%	4.39%	4.74%	5.48%	99.51%	98.14%	97.94%
Female	45.54%	44.40%	39.45%	45.54%	43.41%	45.33%	*	8.75%	10.85%	*	3.44%	4.37%	100.00%	98.39%	98.31%
Male	38.98%	35.15%	32.09%	38.98%	44.37%	45.67%	15.25%	14.36%	15.08%	6.78%	6.13%	7.16%	99.16%	97.92%	97.66%

* Results cannot be published without releasing personally identifiable information based upon the EED reporting protocol

Writing: SBA Results Compared for College Gate Elementary School, District and State Grades 3 Through 6															
	% Advanced Proficient			% Proficient			% Below Proficient			% Far Below Proficient			% Tested		
	School	District	State	School	District	State	School	District	State	School	District	State	School	District	State
All Students	33.49%	34.87%	30.49%	47.71%	44.25%	44.50%	*	18.78%	22.32%	*	2.10%	2.69%	99.09%	98.11%	97.96%
AF AM	25.00%	20.71%	20.51%	55.00%	46.71%	48.68%	*	28.71%	27.18%	*	3.88%	3.63%	100.00%	98.15%	97.71%
AKNA/AI	*	17.15%	12.11%	58.33%	45.31%	41.05%	33.33%	33.38%	40.69%	*	4.15%	6.15%	100.00%	96.51%	97.64%
Asian	50.00%	30.17%	28.49%	40.00%	45.92%	45.93%	*	21.33%	23.31%	*	2.58%	2.27%	100.00%	97.56%	97.67%
NH/OPI	30.77%	14.02%	N/A	38.46%	42.89%	N/A	*	39.38%	N/A	*	3.71%	N/A	100.00%	99.18%	N/A
White	40.00%	45.85%	40.04%	47.06%	41.91%	44.71%	*	11.26%	13.97%	*	0.99%	1.28%	98.84%	98.66%	98.22%
Hispanic	35.00%	27.33%	27.00%	50.00%	47.25%	48.36%	*	22.54%	22.23%	*	2.88%	2.41%	100.00%	97.07%	97.36%
ME	34.78%	28.51%	29.14%	43.48%	47.68%	47.29%	*	21.31%	21.37%	*	2.51%	2.20%	97.87%	98.15%	97.96%
EDS	24.44%	18.92%	17.53%	50.00%	47.34%	45.15%	*	29.95%	32.95%	*	3.79%	4.37%	98.90%	97.50%	96.53%
Not EDS	39.84%	45.99%	40.21%	46.09%	42.10%	44.01%	*	10.99%	14.35%	*	0.92%	1.44%	99.22%	98.54%	99.06%
SWD	7.32%	7.09%	6.94%	34.15%	38.82%	37.02%	*	45.96%	47.34%	*	8.12%	8.69%	100.00%	94.28%	93.97%
Non-SWD	39.55%	39.86%	34.45%	50.85%	45.23%	45.76%	*	13.89%	18.11%	*	1.02%	1.69%	98.88%	98.83%	98.66%
LEP	*	4.71%	3.14%	50.00%	37.05%	30.66%	43.75%	50.57%	56.76%	*	7.67%	9.44%	100.00%	94.25%	96.18%
Not LEP	35.64%	37.55%	34.08%	47.52%	44.89%	46.32%	*	15.96%	17.79%	*	1.60%	1.81%	99.02%	98.47%	98.20%
Migrant	35.71%	21.44%	14.20%	50.00%	48.58%	42.55%	*	26.63%	38.57%	*	3.35%	4.68%	100.00%	98.51%	98.58%
Not Migrant	33.33%	35.46%	31.63%	47.55%	44.06%	44.64%	*	18.43%	21.18%	*	2.04%	2.55%	99.03%	98.09%	97.92%
Female	38.00%	42.63%	37.48%	50.00%	42.50%	43.42%	*	13.62%	17.40%	*	1.26%	1.70%	99.01%	98.32%	98.22%
Male	29.66%	27.36%	23.87%	45.76%	45.96%	45.52%	*	23.78%	26.98%	*	2.91%	3.63%	99.16%	97.90%	97.72%

* Results cannot be published without releasing personally identifiable information based upon the EED reporting protocol

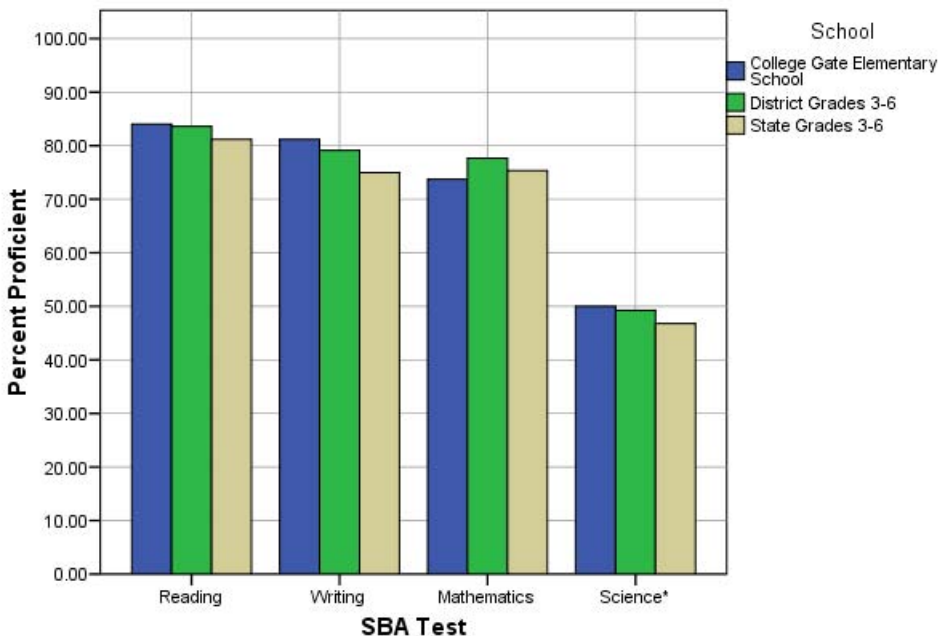
Mathematics: SBA Results Compared for College Gate Elementary School, District and State Grades 3 Through 6															
	% Advanced Proficient			% Proficient			% Below Proficient			% Far Below Proficient			% Tested		
	School	District	State	School	District	State	School	District	State	School	District	State	School	District	State
All Students	41.94%	39.81%	36.08%	31.80%	37.84%	39.26%	14.29%	12.46%	13.78%	11.98%	9.88%	10.88%	98.64%	98.52%	98.12%
AF AM	30.00%	19.48%	22.09%	45.00%	40.14%	41.60%	*	20.19%	18.61%	*	20.19%	17.70%	100.00%	98.38%	97.78%
AKNA/AI	25.00%	23.20%	18.26%	25.00%	39.51%	39.14%	25.00%	19.22%	21.79%	25.00%	18.07%	20.81%	100.00%	96.96%	97.72%
Asian	60.00%	37.02%	34.29%	30.00%	41.20%	41.23%	*	13.76%	14.10%	*	8.03%	10.38%	100.00%	99.27%	98.99%
NH/OPI	46.15%	18.52%	N/A	23.08%	38.07%	N/A	*	20.16%	N/A	*	23.25%	N/A	100.00%	99.39%	N/A
White	53.57%	51.12%	45.75%	29.76%	35.15%	38.35%	10.71%	8.41%	9.81%	5.95%	5.32%	6.09%	97.67%	98.69%	98.17%
Hispanic	40.00%	31.85%	31.11%	30.00%	40.04%	42.19%	15.00%	15.02%	15.10%	15.00%	13.09%	11.60%	100.00%	98.66%	98.47%
ME	30.43%	33.75%	35.45%	36.96%	41.21%	40.61%	17.39%	13.93%	13.30%	15.22%	11.11%	10.64%	97.87%	98.26%	98.00%
EDS	30.34%	24.26%	23.31%	38.20%	41.50%	40.98%	14.61%	17.54%	18.60%	16.85%	16.70%	17.11%	97.80%	98.14%	96.77%
Not EDS	50.00%	50.70%	45.67%	27.34%	35.28%	37.96%	14.06%	8.91%	10.16%	8.59%	5.12%	6.21%	99.22%	98.79%	99.16%
SWD	7.50%	12.52%	12.06%	15.00%	31.53%	32.14%	32.50%	23.68%	23.60%	45.00%	32.27%	32.20%	97.56%	94.19%	93.99%
Non-SWD	49.72%	44.69%	40.12%	35.59%	38.97%	40.45%	10.17%	10.46%	12.13%	4.52%	5.88%	7.30%	98.88%	99.34%	98.85%
LEP	*	8.22%	6.05%	*	36.74%	34.10%	31.25%	24.50%	27.43%	31.25%	30.54%	32.42%	100.00%	97.95%	97.56%
Not LEP	45.27%	42.73%	40.09%	31.34%	37.94%	39.95%	12.94%	11.35%	11.96%	10.45%	7.98%	8.01%	98.53%	98.57%	98.19%
Migrant	35.71%	30.94%	22.37%	42.86%	43.65%	40.27%	*	14.21%	20.36%	*	11.20%	17.00%	100.00%	98.68%	98.54%
Not Migrant	42.36%	40.21%	37.05%	31.03%	37.58%	39.19%	14.29%	12.38%	13.31%	12.32%	9.83%	10.45%	98.54%	98.51%	98.09%
Female	43.00%	41.01%	36.83%	36.00%	38.32%	39.88%	13.00%	11.59%	13.34%	8.00%	9.09%	9.96%	99.01%	98.71%	98.31%
Male	41.03%	38.66%	35.38%	28.21%	37.38%	38.67%	15.38%	13.30%	14.20%	15.38%	10.66%	11.75%	98.32%	98.34%	97.94%

* Results cannot be published without releasing personally identifiable information based upon the EED reporting protocol

Science: SBA Results Compared for College Gate Elementary School, District and State Grade 4															
	% Advanced Proficient			% Proficient			% Below Proficient			% Far Below Proficient			% Tested		
	School	District	State	School	District	State	School	District	State	School	District	State	School	District	State
All Students	21.43%	23.68%	22.1%	28.57%	25.57%	24.7%	32.14%	31.70%	31.3%	17.86%	19.06%	21.9%	100.00%	97.81%	95.35%
AF AM	*	9.18%	8.9%	37.50%	18.84%	23.3%	37.50%	39.13%	38.0%	*	32.85%	29.8%	100.00%	98.57%	94.49%
AKNA/AI	*	6.54%	6.8%	*	21.50%	14.2%	42.86%	42.99%	35.2%	*	28.97%	43.8%	100.00%	96.40%	94.98%
Asian	*	10.18%	13.4%	*	21.40%	19.4%	*	39.30%	37.5%	*	29.12%	29.7%	100.00%	98.28%	97.39%
NH/OPI	*	6.57%	N/A	*	8.03%	N/A	*	34.31%	N/A	*	51.09%	N/A	100.00%	98.56%	N/A
White	26.67%	36.40%	32.3%	46.67%	29.08%	29.9%	*	25.33%	27.3%	*	9.19%	10.5%	100.00%	97.87%	94.97%
Hispanic	42.86%	16.17%	18.2%	*	26.15%	26.0%	42.86%	32.08%	33.9%	*	25.61%	21.9%	100.00%	97.12%	96.39%
ME	*	16.06%	18.5%	*	26.12%	26.8%	36.36%	37.47%	35.9%	27.27%	20.34%	18.7%	100.00%	98.32%	96.90%
EDS	12.00%	8.34%	11.0%	28.00%	22.44%	20.1%	32.00%	38.10%	34.7%	28.00%	31.12%	34.2%	100.00%	97.73%	94.99%
Not EDS	29.03%	35.00%	31.2%	29.03%	27.88%	28.5%	32.26%	26.97%	28.5%	9.68%	10.15%	11.9%	100.00%	97.87%	95.64%
SWD	*	8.38%	7.7%	*	16.38%	15.2%	*	36.57%	36.6%	60.00%	38.67%	40.5%	100.00%	93.25%	91.70%
Non-SWD	26.09%	26.43%	24.7%	30.43%	27.22%	26.4%	34.78%	30.82%	30.4%	8.70%	15.53%	18.5%	100.00%	98.68%	96.04%
LEP	*	2.00%	1.5%	*	5.14%	3.8%	60.00%	34.00%	28.3%	*	58.86%	66.5%	100.00%	96.15%	95.67%
Not LEP	23.53%	26.13%	25.2%	31.37%	27.88%	27.9%	29.41%	31.44%	31.8%	15.69%	14.55%	15.1%	100.00%	98.00%	95.30%
Migrant	*	9.70%	9.0%	*	26.87%	15.3%	*	39.55%	34.3%	*	23.88%	41.4%	100.00%	97.10%	97.32%
Not Migrant	22.64%	24.24%	23.0%	26.42%	25.51%	25.3%	32.08%	31.38%	31.1%	18.87%	18.86%	20.5%	100.00%	97.84%	95.21%
Female	17.39%	22.73%	20.8%	26.09%	25.78%	25.2%	*	33.63%	32.6%	*	17.87%	21.4%	100.00%	98.05%	95.43%
Male	24.24%	24.61%	23.4%	30.30%	25.36%	24.2%	21.21%	29.80%	30.1%	24.24%	20.23%	22.3%	100.00%	97.58%	95.27%

* Results cannot be published without releasing personally identifiable information based upon the EED reporting protocol

2007-08 SBA Results Compared for College Gate Elementary School, District and State



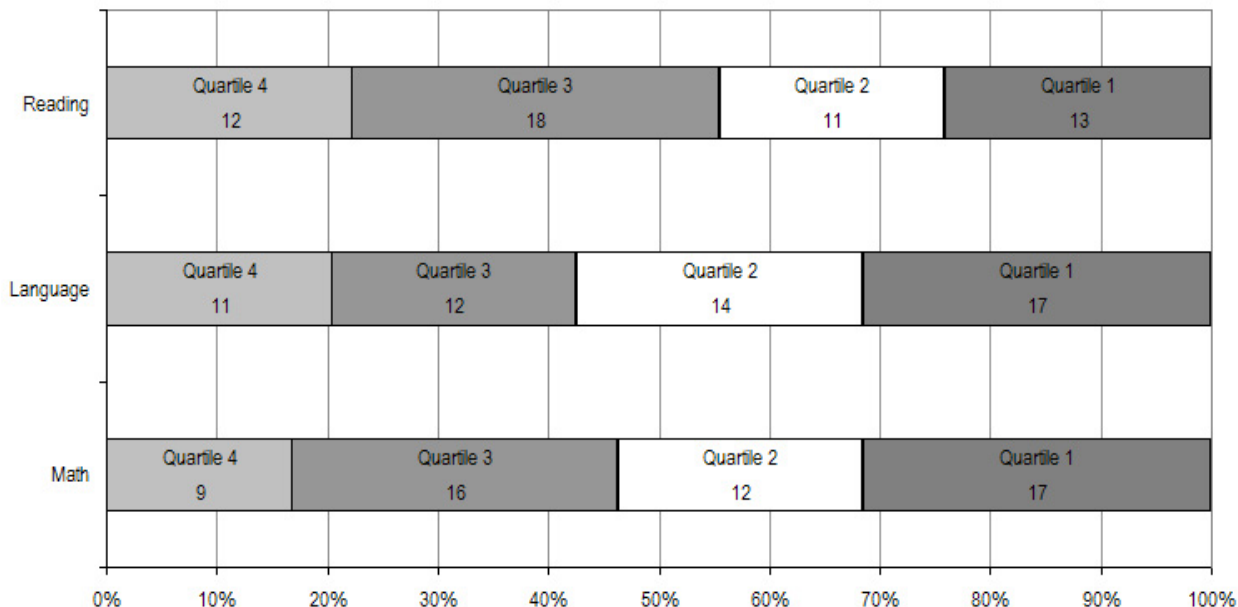
* 2007-08 was the first year Science was administered for grades 4, 8 and 10 on the SBA.

College Gate Elementary School TerraNova Grade 5 Percent in Each Quartile								
Reading	Above Average		Average				Below Average	
	4th Quartile (76-99 percentile)		3rd Quartile (51-75 percentile)		2nd Quartile (26-50 percentile)		1st Quartile (1-25 percentile)	
	School	District	School	District	School	District	School	District
07-08	22.22%	25.65%	33.33%	24.08%	20.37%	23.73%	24.07%	26.55%
06-07	29.3%	33.1%	36.6%	26.1%	*	23.6%	*	17.2%
05-06	28.9%	30.4%	18.4%	26.8%	26.3%	24.5%	26.3%	18.3%
04-05	23.8%	29.2%	30.2%	27.6%	31.7%	24.5%	14.3%	18.7%
03-04	26.2%	30.6%	35.4%	26.9%	21.5%	24.2%	16.9%	18.3%
Language								
07-08	20.37%	26.79%	22.22%	27.20%	25.93%	24.12%	31.48%	21.89%
06-07	41.5%	34.7%	24.4%	26.9%	22.0%	21.4%	12.2%	17.0%
05-06	21.1%	34.0%	23.7%	26.5%	34.2%	22.0%	21.1%	17.5%
04-05	31.7%	32.1%	25.4%	28.3%	27.0%	21.2%	15.9%	18.4%
03-04	29.2%	34.1%	26.2%	26.5%	30.8%	21.7%	13.8%	17.7%
Mathematics								
07-08	16.67%	25.45%	29.63%	26.40%	22.22%	24.47%	31.48%	23.68%
06-07	33.3%	29.7%	33.3%	31.6%	23.1%	21.2%	10.3%	17.4%
05-06	26.3%	28.4%	39.5%	31.9%	10.5%	22.3%	23.7%	17.5%
04-05	25.4%	26.9%	30.2%	31.1%	25.4%	22.9%	19.0%	19.1%
03-04	23.1%	28.3%	30.8%	29.3%	23.1%	22.6%	23.1%	19.8%

The double bold line indicates a change from the TerraNova 2nd edition to the TerraNova 3rd edition.

* Results cannot be published without releasing personally identifiable information based upon the EED reporting protocol

2007-08 TerraNova 3rd Edition Grade 5 Percent and Count of Students in Each Quartile For College Gate Elementary School



Climate Survey Results for College Gate Elementary School

The Anchorage School District administered the School Climate and Connectedness Surveys in spring 2008 to students in grades 5-12, all school staff and parents/guardians of students in grades K-12. The surveys were done to provide schools with information about perceptions and experiences related to school climate for use in setting school goals and redirecting resources. In the spring of 2008 grades 3 and 4 students were involved in a pilot survey for measuring school climate and connectedness. The results are currently under review by the American Institutes for Research.

Respondents were asked to answer a series of questions that were related to a certain concept. For each item, there were five options from which to choose a response. The answer options ranged from strongly disagree (1) to strongly agree (5).

Student Survey Response Rate – Grades 5-12			
	College Gate Elementary School	Overall Elementary Schools	District**
# Surveys Completed	99	5,579	21,629
# Reportable Surveys	93	4,969	18,654
# Students Enrolled*	107	6,331	28,945
Reportable Response Rate	86.92%	78.49%	64.45%

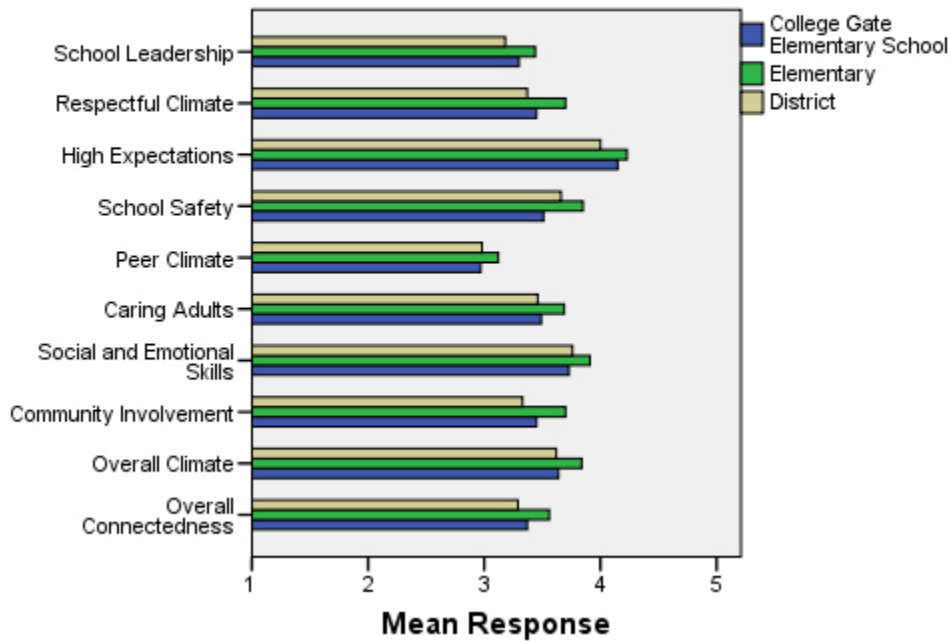
*Number enrolled as of April 1, 2008

**District data does not include KCC responses

Each question in the survey related to a factor or concept, and a score was calculated based on the mean response for the questions related to each factor. The factors measured in the survey were:

- **School Leadership and Student Involvement:** This factor reflects students' feelings about the decision making of school leaders as well as student participation in the school governance. Students selected responses between 1 and 5 where 1 indicates a low level of school leadership and student involvement and 5 indicates a high level of school leadership and student involvement.
- **Respectful Climate:** This factor reflects students' feelings about fairness of rules and respect for students' contributions. Students selected responses between 1 and 5 where 1 indicates a lack of a respectful climate and 5 indicates a highly respectful climate for students.
- **High Expectations:** This factor reflects students' feelings about their own expectations as well as those of adults in their school and community. Students selected responses between 1 and 5 where 1 indicates a lack of high expectations and 5 indicates a high level of high expectations.
- **School Safety:** This factor reflects students' feelings about bullies and gangs at school as well as general crime and violence in the community. Students selected responses between 1 and 5 where 1 indicates a low level of school safety and 5 indicates a high level of school safety.
- **Peer Climate:** This factor reflects students' feelings about how respectful students are to one another and how helpful students are to other students. Students selected responses between 1 and 5 where 1 indicates a more negative peer climate and 5 indicates a very positive peer climate at the school.
- **Caring Adults:** This factor reflects students' feelings about how close they feel to adults in the school. Students selected responses between 1 and 5 where 1 indicates a lack of caring adult relationships and 5 indicates strong caring adult relationships at the school.
- **Social and Emotional Learning:** This factor reflects students' ability to think about the consequences of their actions and to empathize with others. Students selected responses between 1 and 5 where 1 indicates that students at the school perceive themselves as having poorer social and emotional learning, and 5 indicates higher levels of social and emotional learning.
- **Community Involvement:** This factor reflects students' feelings about how supportive and welcoming the school is with parents and the community. Students selected responses between 1 and 5 where 1 indicates a less supportive and welcoming environment and 5 indicates a more supportive and welcoming environment.
- **Overall Climate:** The overall climate score was computed as the mean of three scales: school leadership, high expectations and school safety.
- **Overall Connectedness:** Overall connectedness score was computed as a mean of four scales: respectful climate, peer climate, caring adults and community involvement.

Climate and Connectedness Student Survey - College Gate



Student Survey Mean Response by Factors Related to School Climate - Overall District			
	College Gate Elementary School	Overall Elementary Schools	District
School Leadership	3.30	3.44	3.18
Respectful Climate	3.45	3.70	3.37
High Expectations	4.15	4.23	4.00
School Safety	3.51	3.85	3.66
Peer Climate	2.97	3.12	2.98
Caring Adults	3.49	3.69	3.46
Social and Emotional Skills	3.73	3.91	3.76
Community Involvement	3.45	3.70	3.33
Overall Climate	3.64	3.84	3.62
Overall Connectedness	3.37	3.56	3.29

Range is from a low of 1 to a high of 5

Students were also asked to answer questions related to school danger. The following table provides the responses for those questions:

Student Survey Results of the School Danger Questions - Percent of Students Responding in Each Category					
	0 Times	1-2 Times	3-6 Times	7-12 Times	> 12 Times
College Gate Elementary School					
Under the influence of drugs?	92.39%	4.35%	1.09%	1.09%	1.09%
Under the influence of alcohol?	88.04%	9.78%	1.09%	0.00%	1.09%
Destroy things (vandalism)?	40.86%	35.48%	15.05%	4.30%	4.30%
Get into fights?	27.96%	23.66%	25.81%	12.90%	9.68%
Steal things?	50.00%	27.17%	14.13%	1.09%	7.61%
Threaten or bully?	29.03%	29.03%	15.05%	5.38%	21.51%
Under the influence of inhalants?	64.52%	17.20%	11.83%	5.38%	1.08%
Carry weapons?	68.82%	24.73%	1.08%	3.23%	2.15%
Overall Elementary Schools					
Under the influence of drugs?	91.87%	5.65%	1.22%	0.31%	0.96%
Under the influence of alcohol?	91.42%	6.01%	1.16%	0.51%	0.90%
Destroy things (vandalism)?	46.82%	32.08%	12.45%	3.30%	5.36%
Get into fights?	22.32%	35.75%	22.56%	7.96%	11.41%
Steal things?	49.79%	27.92%	12.01%	4.33%	5.95%
Threaten or bully?	32.34%	28.83%	17.08%	7.78%	13.97%
Under the influence of inhalants?	71.03%	17.07%	6.14%	2.63%	3.12%
Carry weapons?	79.22%	15.35%	3.17%	0.59%	1.68%
District					
Under the influence of drugs?	60.45%	15.05%	9.54%	3.92%	11.04%
Under the influence of alcohol?	63.11%	16.37%	8.90%	4.43%	7.19%
Destroy things (vandalism)?	41.26%	29.47%	15.45%	5.88%	7.94%
Get into fights?	26.40%	35.20%	21.96%	7.11%	9.33%
Steal things?	44.80%	25.68%	13.81%	6.98%	8.74%
Threaten or bully?	32.21%	26.21%	16.68%	9.27%	15.63%
Under the influence of inhalants?	72.79%	14.21%	5.66%	2.48%	4.87%
Carry weapons?	69.45%	19.15%	5.34%	2.01%	4.06%

Student Survey Results of the Mean Factor Score by Ethnicity (Self-Reported)							
	AKNA/AI	AF AM	Hispanic	Asian/NH	White	Other	Multi-Ethnic
College Gate Elementary School							
School Leadership	3.36	3.29	3.60	3.36	3.23	3.57	3.23
Respectful Climate	3.43	3.38	4.33	3.68	3.47	3.21	3.32
High Expectations	4.05	4.12	4.00	4.31	4.17	4.21	4.07
School Safety	3.39	3.24	4.80	4.05	3.49	3.60	3.30
Peer Climate	2.60	2.94	3.80	2.96	3.11	3.20	2.78
Caring Adults	3.57	3.23	3.20	3.36	3.65	3.58	3.23
Social and Emotional Skills	3.52	3.70	4.20	3.78	3.74	3.81	3.79
Community Involvement	3.57	3.40	3.57	3.39	3.37	3.79	3.43
Overall Climate	3.53	3.40	4.13	3.91	3.60	3.79	3.53
Overall Connectedness	3.46	3.37	3.73	3.35	3.39	3.49	3.18
Overall Elementary Schools							
School Leadership	3.56	3.50	3.52	3.55	3.37	3.44	3.42
Respectful Climate	3.75	3.60	3.66	3.72	3.71	3.69	3.63
High Expectations	4.12	4.23	4.23	4.22	4.26	4.19	4.25
School Safety	3.75	3.63	3.73	3.68	4.03	3.66	3.79
Peer Climate	3.12	2.94	3.12	3.18	3.16	3.05	3.05
Caring Adults	3.64	3.73	3.64	3.59	3.74	3.60	3.76
Social and Emotional Skills	3.86	3.84	3.91	3.95	3.93	3.90	3.89
Community Involvement	3.66	3.60	3.67	3.66	3.75	3.66	3.70
Overall Climate	3.81	3.79	3.84	3.81	3.89	3.76	3.82
Overall Connectedness	3.56	3.49	3.51	3.53	3.60	3.49	3.56
District							
School Leadership	3.33	3.14	3.19	3.28	3.14	3.17	3.15
Respectful Climate	3.48	3.18	3.32	3.39	3.39	3.37	3.33
High Expectations	3.98	3.94	3.96	4.02	4.02	4.00	4.01
School Safety	3.60	3.48	3.55	3.47	3.78	3.51	3.62
Peer Climate	3.01	2.85	2.94	3.05	3.00	2.92	2.93
Caring Adults	3.49	3.43	3.37	3.33	3.51	3.42	3.46
Social and Emotional Skills	3.73	3.66	3.73	3.81	3.78	3.75	3.74
Community Involvement	3.37	3.22	3.31	3.29	3.34	3.34	3.31
Overall Climate	3.64	3.52	3.57	3.59	3.65	3.56	3.60
Overall Connectedness	3.33	3.17	3.24	3.26	3.31	3.26	3.27

Staff Survey Response Rate			
	College Gate Elementary School	Overall Elementary Schools	District**
# Surveys Completed	46	1,634	2,980
# Reportable Surveys	45	1,628	2,968
# Staff Members*	55	2,967	5,549
Reportable Response Rate	81.82%	54.87%	53.49%

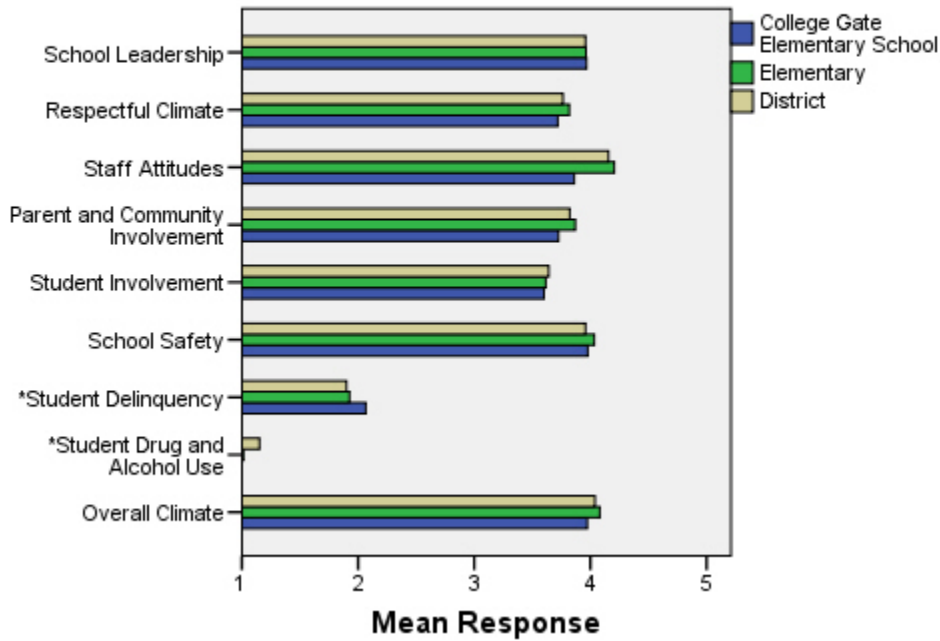
*Number staff as of April 1, 2008

**Includes KCC responses

Each question in the survey related to a factor or concept, and a score was calculated based on the mean response for the questions related to each factor. The factors were:

- **School Leadership:** This factor reflects staff members' feelings about the decision making of school leaders as well as the fairness of school rules. Staff members selected responses between 1 and 5 where 1 indicates a low level of school leadership and 5 indicates a high level of school leadership.
- **Respectful Climate:** This factor reflects staff members' feelings about how students treat each other and how well students and staff members treat one another. Staff members selected responses between 1 and 5 where 1 indicates a low level of respect and 5 indicates a high level.
- **Staff Attitudes:** This scale reflects staff members' feelings about the competence of teachers as well as how positive their attitudes are towards their jobs. Staff members selected responses between 1 and 5 where 1 indicates more negative staff attitudes and 5 indicates highly positive staff attitudes.
- **Parent and Community Involvement:** This factor reflects staff members' feelings about how accessible the school is for parents as well as how connected adults in the community are to the school. Staff members selected responses between 1 and 5 where 1 indicates a low level of parent and community involvement and 5 indicates a high level of parent and community involvement.
- **Student Involvement:** This factor reflects staff members' feeling about how involved students are in the decision making process. Staff members selected responses between 1 and 5 where 1 indicates a low level of student involvement and 5 indicates a high level of student involvement.
- **School Safety:** This factor reflects staff members' feelings about the impact of gangs and bullies as well as general crime and violence in the community. Staff members selected responses between 1 and 5 where 1 indicates a low level school safety and 5 indicates a high level of school safety.
- **Student Delinquency:** This factor uses staff members' reports of observing students getting into fights, stealing and bullying. The student delinquency and student drug and alcohol use scales differ from the other factors since the higher the score is the more negative the response. Staff members selected responses between 1 and 5 where 1 indicates a low level of student delinquency and 5 indicates a high level of student delinquency.
- **Student Drug and Alcohol Use:** This factor uses staff members' reports of observing students under the influence of drugs or alcohol. The student delinquency and student drug and alcohol use scales differ from the other factors since the higher the score is the more negative the response. Staff members selected responses between 1 and 5 where 1 indicates a low level of student drug and alcohol use and 5 indicates a high level of student drug and alcohol use.
- **Overall Climate:** Computed as the mean of 8 scales: school leadership, respectful climate, staff attitudes, parent and community involvement, student involvement, school safety, student delinquency, and drug and alcohol use scores.

Climate and Connectedness Staff Survey - College Gate



Staff Survey Mean Response by Factors Related to School Climate - Overall District			
	College Gate Elementary School	Overall Elementary Schools	District
School Leadership	3.97	3.96	3.96
Respectful Climate	3.72	3.82	3.76
Staff Attitudes	3.86	4.21	4.16
Parent & Community Involvement	3.73	3.87	3.82
Student Involvement	3.60	3.61	3.64
School Safety	3.98	4.03	3.96
Student Delinquency*	2.07	1.93	1.90
Student Drug & Alcohol Use*	1.00	1.01	1.15
Overall Climate	3.97	4.08	4.04

Range is from a low of 1 to a high of 5

*Student Drug and Alcohol Use and Student Delinquency factor scale scores differ from other factors since the higher the score is the more negative the response.

Staff members were also asked to answer questions related to school danger. The following table provides the responses for those questions:

Staff Survey Results of the School Danger Questions - Percent of Staff Responding in Each Category					
	0 Times	1-2 Times	3-6 Times	7-12 Times	> 12 Times
College Gate Elementary School					
Under the influence of drugs?	100.00%	0.00%	0.00%	0.00%	0.00%
Under the influence of alcohol?	100.00%	0.00%	0.00%	0.00%	0.00%
Destroy things (vandalism)?	33.33%	36.11%	25.00%	5.56%	0.00%
Get into fights?	33.33%	41.67%	13.89%	5.56%	5.56%
Steal things?	33.33%	44.44%	8.33%	8.33%	5.56%
Threaten or bully?	13.89%	36.11%	19.44%	13.89%	16.67%
Under the influence of inhalants?	100.00%	0.00%	0.00%	0.00%	0.00%
Carry weapons?	72.22%	25.00%	2.78%	0.00%	0.00%
Overall Elementary Schools					
Under the influence of drugs?	98.39%	1.47%	0.15%	0.00%	0.00%
Under the influence of alcohol?	98.97%	0.96%	0.07%	0.00%	0.00%
Destroy things (vandalism)?	40.04%	37.02%	16.00%	4.13%	2.80%
Get into fights?	32.16%	38.18%	19.24%	5.58%	4.85%
Steal things?	38.65%	40.63%	13.96%	4.56%	2.20%
Threaten or bully?	20.00%	36.03%	23.38%	10.59%	10.00%
Under the influence of inhalants?	98.90%	0.95%	0.15%	0.00%	0.00%
Carry weapons?	89.94%	8.96%	1.03%	0.07%	0.00%
District					
Under the influence of drugs?	82.61%	11.54%	4.11%	1.19%	0.55%
Under the influence of alcohol?	86.69%	10.21%	2.34%	0.60%	0.16%
Destroy things (vandalism)?	38.03%	36.81%	16.05%	5.07%	4.04%
Get into fights?	35.38%	38.78%	16.46%	4.83%	4.55%
Steal things?	41.82%	37.07%	14.02%	4.28%	2.81%
Threaten or bully?	22.88%	37.15%	21.97%	8.96%	9.04%
Under the influence of inhalants?	97.27%	2.42%	0.24%	0.04%	0.04%
Carry weapons?	88.47%	10.26%	1.11%	0.08%	0.08%

Staff Survey Results of the Mean Factor Score by Ethnicity (Self-Reported)						
	AKNA/AI	AF AM/Black	Hispanic	Asian/NH	White	Multi-Ethnic
College Gate Elementary School						
School Leadership	4.46	4.38	***	5.00	3.92	***
Respectful Climate	3.55	4.60	***	3.80	3.74	***
Staff Attitudes	3.73	4.40	***	4.80	3.86	***
Parent and Community Involvement	3.79	4.57	***	4.71	3.70	***
Student Involvement	3.50	4.33	***	4.67	3.61	***
School Safety	4.00	4.80	***	4.20	3.99	***
* Student Delinquency	2.30	2.00	***	2.00	2.01	***
* Student Drug and Alcohol Use	1.00	1.00	***	1.00	1.00	***
Overall Climate	4.23	4.51	***	4.52	3.95	***
Overall Elementary Schools						
School Leadership	4.10	4.13	4.11	4.17	3.96	4.06
Respectful Climate	3.74	3.99	3.87	4.06	3.81	3.88
Staff Attitudes	4.15	4.23	4.30	4.24	4.21	4.31
Parent and Community Involvement	3.86	4.06	3.97	3.99	3.87	3.91
Student Involvement	3.78	3.66	3.73	3.81	3.61	3.71
School Safety	3.92	4.10	4.16	3.93	4.04	4.05
* Student Delinquency	1.79	1.61	1.65	1.54	1.97	2.13
* Student Drug and Alcohol Use	1.00	1.00	1.01	1.03	1.01	1.01
Overall Climate	4.08	4.18	4.23	4.24	4.07	4.13
District						
School Leadership	3.99	3.99	4.13	4.15	3.96	4.06
Respectful Climate	3.66	3.83	3.84	3.96	3.76	3.84
Staff Attitudes	4.06	4.11	4.27	4.22	4.16	4.29
Parent and Community Involvement	3.75	3.91	3.94	3.93	3.82	3.85
Student Involvement	3.62	3.67	3.85	3.88	3.64	3.72
School Safety	3.82	3.94	4.06	3.94	3.97	3.94
* Student Delinquency	1.88	1.90	1.67	1.61	1.91	2.05
* Student Drug and Alcohol Use	1.12	1.26	1.03	1.16	1.15	1.13
Overall Climate	3.96	4.04	4.20	4.18	4.04	4.09

*Student Drug and Alcohol Use and Student Delinquency factor scale scores differ from other factors since the higher the score is the more negative the response.

**Staff survey results do not include an 'Other' ethnicity category since staff in that category all chose at least one other ethnicity in addition to 'Other' and were included in the 'Multi-Ethnic' category as a result.

***Results can not be calculated because of missing responses

Parent/Guardian Survey Response Rate			
	College Gate Elementary School	Overall Elementary Schools	District**
# Surveys Completed	64	3,933	7,415
# Primary Guardians*	400	23,668	48,693
Response Rate	16.00%	16.62%	15.23%

*Number students enrolled as of April 1, 2008 without dual guardians included

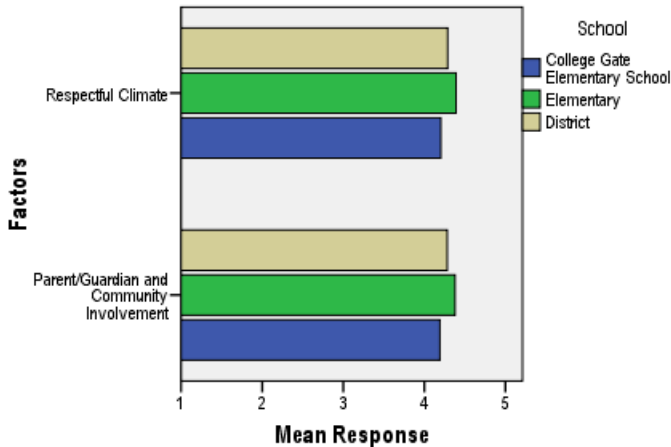
**District data

- 1) does not include KCC responses;
- 2) does include responses without a school designation

Two factors are calculated from the Parent/Guardian Survey. All results other than the factor scores below are reported by individual question: questions in the graphs are condensed phrases from the full question, while questions in the tables are the full question.

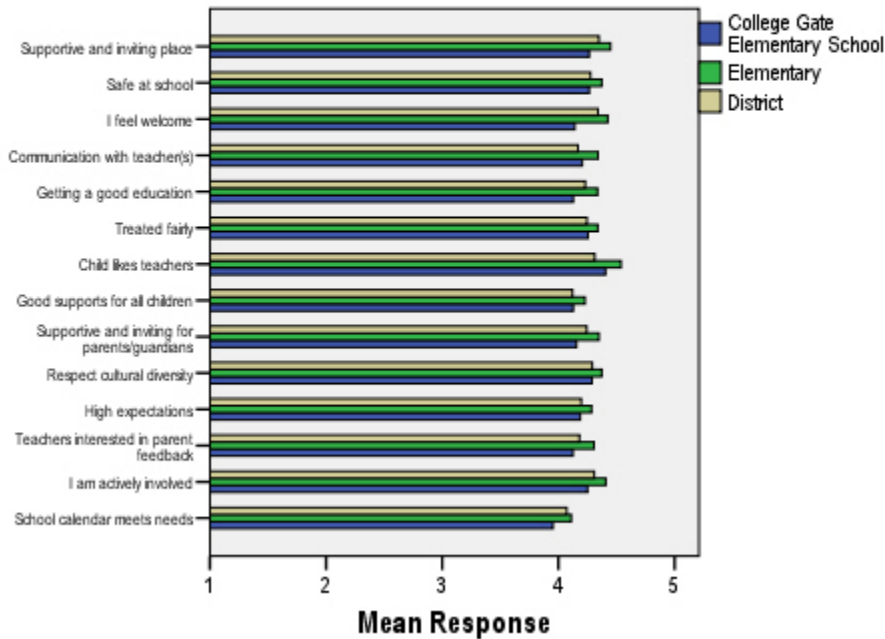
- **Respectful Climate:** This factor is calculated by determining the mean of five questions: 1) My child's school is a supportive and inviting place, 2) I feel welcome at this school, 3) I am satisfied with communication with my child's teacher(s), 4) This school is a supportive and inviting place for parents/guardians and 5) Adults at this school respect cultural diversity.
- **Parent/Guardian and Community Involvement:** This factor is calculated by determining the mean of five questions: 1) I feel welcome at this school, 2) This school is a supportive and inviting place for parents/guardians, 3) Adults at this school respect cultural diversity, 4) Teacher's at my child's school are interested in what I have to say and 5) I feel like I am actively involved in my child's education.

Parent/Guardian Survey Mean Factor Scores (Range is from a low of 1 to a high of 5)



Parent/Guardian Factor Scores			
	College Gate Elementary School	Overall Elementary Schools	District
Respectful Climate	4.20	4.39	4.29
Parent/Guardian and Community Involvement	4.19	4.38	4.28

Climate and Connectedness Parent/Guardian Survey - College Gate



Parent/Guardian Mean Response by Questions Related to School Climate - Overall			
	College Gate Elementary School	Overall Elementary Schools	District
My child's school is a supportive and inviting place	4.27	4.45	4.35
My child is safe at school	4.27	4.37	4.28
I feel welcome at this school	4.14	4.43	4.34
I am satisfied with communication with my child's teacher(s)	4.21	4.34	4.17
My child is getting a good education at this school	4.13	4.34	4.23
My child is treated fairly at school	4.25	4.34	4.25
My child likes his/her teachers	4.41	4.54	4.31
At this school, there are good supports for all children, including children with learning disabilities	4.13	4.23	4.12
This school is a supportive and inviting place for parents/guardians	4.16	4.35	4.24
Adults at this school respect cultural diversity	4.29	4.37	4.29
Adults at this school have high expectations of my child	4.19	4.29	4.20
Teachers at my child's school are interested in what I have to say	4.13	4.31	4.18
I feel like I am actively involved in my child's education	4.25	4.41	4.31
The district's school calendar meets the needs of my child and our family	3.95	4.11	4.07

Range is from a low of 1 to a high of 5

Parent/Guardian Mean Response by Questions Related to School Climate by Ethnicity (Self-Reported)							
College Gate Elementary School	AKNA/AI	AF AM	Hispanic	Asian/NH	White	Other	ME
My child's school is a supportive and inviting place	4.38	4.00	3.75	4.00	4.47	4.25	4.17
My child is safe at school	4.50	4.00	4.00	3.78	4.30	4.50	4.67
I feel welcome at this school	4.00	4.00	3.75	4.00	4.33	4.25	4.00
I am satisfied with communication with my child's teacher(s)	4.50	4.00	3.25	3.67	4.45	4.75	3.83
My child is getting a good education at this school	4.38	4.00	3.50	3.56	4.41	4.00	4.00
My child is treated fairly at school	4.63	4.00	3.50	3.75	4.53	4.25	3.67
My child likes his/her teachers	4.88	4.00	3.75	3.78	4.57	4.25	4.67
At this school, there are good supports for all children, including children with learning disabilities	4.29	4.00	3.25	3.78	4.38	4.75	3.67
This school is a supportive and inviting place for parents/guardians	4.00	4.00	3.50	3.89	4.40	4.75	3.83
Adults at this school respect cultural diversity	4.13	4.00	3.50	3.78	4.68	4.25	4.33
Adults at this school have high expectations of my child	4.38	4.00	3.25	3.78	4.53	4.50	3.67
Teachers at my child's school are interested in what I have to say	4.50	4.00	3.00	3.56	4.47	4.75	3.50
I feel like I am actively involved in my child's education	4.13	4.00	3.75	3.78	4.47	4.75	4.17
The district's school calendar meets the needs of my child and our family	4.50	4.00	3.00	3.78	4.17	4.25	3.17
Overall Elementary Schools							
My child's school is a supportive and inviting place	4.47	4.36	4.51	4.44	4.47	4.26	4.46
My child is safe at school	4.42	4.40	4.42	4.36	4.38	4.23	4.35
I feel welcome at this school	4.37	4.38	4.47	4.48	4.44	4.27	4.49
I am satisfied with communication with my child's teacher(s)	4.40	4.30	4.45	4.36	4.35	4.19	4.35
My child is getting a good education at this school	4.40	4.28	4.44	4.40	4.33	4.04	4.38
My child is treated fairly at school	4.34	4.15	4.37	4.32	4.38	4.14	4.33
My child likes his/her teachers	4.52	4.41	4.47	4.53	4.57	4.49	4.55
At this school, there are good supports for all children, including children with learning disabilities	4.32	4.06	4.31	4.31	4.22	4.05	4.31
This school is a supportive and inviting place for parents/guardians	4.31	4.22	4.42	4.38	4.36	4.11	4.44
Adults at this school respect cultural diversity	4.28	4.25	4.38	4.27	4.43	4.19	4.39
Adults at this school have high expectations of my child	4.30	4.26	4.36	4.27	4.31	3.95	4.28
Teachers at my child's school are interested in what I have to say	4.35	4.25	4.39	4.24	4.33	4.16	4.31
I feel like I am actively involved in my child's education	4.38	4.48	4.40	4.31	4.45	4.20	4.40
The district's school calendar meets the needs of my child and our family	4.22	4.25	4.20	4.19	4.10	3.62	4.08
District							
My child's school is a supportive and inviting place	4.37	4.20	4.41	4.37	4.37	4.20	4.37
My child is safe at school	4.31	4.18	4.29	4.31	4.29	4.11	4.30
I feel welcome at this school	4.31	4.18	4.38	4.36	4.36	4.23	4.40
I am satisfied with communication with my child's teacher(s)	4.21	3.99	4.32	4.23	4.16	4.03	4.20
My child is getting a good education at this school	4.28	4.09	4.33	4.31	4.23	4.03	4.26
My child is treated fairly at school	4.21	3.94	4.30	4.24	4.29	4.08	4.24
My child likes his/her teachers	4.33	4.06	4.31	4.35	4.33	4.20	4.34
At this school, there are good supports for all children, including children with learning disabilities	4.19	3.90	4.24	4.23	4.11	3.97	4.18
This school is a supportive and inviting place for parents/guardians	4.21	4.05	4.31	4.29	4.26	4.05	4.31
Adults at this school respect cultural diversity	4.20	4.02	4.29	4.22	4.34	4.17	4.31
Adults at this school have high expectations of my child	4.24	4.05	4.26	4.21	4.21	3.94	4.20
Teachers at my child's school are interested in what I have to say	4.22	4.04	4.28	4.17	4.20	4.05	4.19
I feel like I am actively involved in my child's education	4.29	4.36	4.37	4.24	4.33	4.20	4.30
The district's school calendar meets the needs of my child and our family	4.19	4.18	4.21	4.16	4.06	3.66	4.02

Range is from a low of 1 to a high of 5