

Goldenview Middle School Overview

Statement of Program

Goldenview Middle School's success is a result of a highly qualified teaching staff, diligent students, committed parents, devoted school personnel, a tireless Parent Teacher Student Association and numerous concerned community members. These enterprising members work in concert with the middle school philosophy and practice to consistently attain excellence and stay the course of continual improvement. We serve our students and community by providing an educational program customized for each student backed by research, data analysis and individual need. All levels of skills are addressed from remediation to the gifted. By providing a rich climate of cultural courses, activities and projects, a diverse responsiveness thrives.

Teachers focus on empowering students to be powerful, literate critical thinkers. Language arts, mathematics, science and social studies are the constructs for the academic interdisciplinary team. Each student participates in health and daily physical education classes. Elective offerings encourage exploration of skills and talents in specialized areas, such as music, drama, world languages, family consumer science, service learning, video production, school-business partnership, art, Math Counts and creative writing. Each course infuses technology to improve student motivation, enhance curriculum and provide real-world learning opportunities. Through city-wide athletics, educational clubs, charitable fund raising, community theatre and other opportunities, students flourish in the greater community.

From the School Report Card

School Goals	
Goal	Level of Achievement
The number of students rated not proficient on the state language arts assessment will decrease by 10 percent, specifically targeting the students with disabilities subgroup.	Partially Attained
The number of students rated not proficient on the state math assessment will decrease 10 percent, specifically targeting the students with disabilities subgroup.	Partially Attained
To promote academic achievement and positive decorum, 95 percent of the student body will receive training in the Aggressors, Victims and Bystanders anti-harassment program.	Attained

From the School Report Card

Budget*	
2006-07 Actual Expenditures	\$5,375,516
2007-08 Revised Budgeted Amount	\$5,667,653
2008-09 Proposed Budget	\$6,024,129

*Dollars budgeted or expended are general fund only
From IFAS

Goldenview Middle School Characteristics			
	School	District	Source of Information
Membership	810	48,858	Fall OASIS
Capacity	91.30%	N/A	2008-18 ASD Capital Improvement Plan
Attendance Rate	93.38%	92.83%	NCLB Summer Data Collection
Retention Rate K-8	0.00%	0.60%	SMS and NCLB Summer Data Collection
Transiency Rate	10.58%	26.07%	NCLB Summer Data Collection
Economically Disadvantaged	94	17,717	Fall OASIS
Average Weekly Volunteer Hours	47	4,660	Department of Education Report Card Report
Dropout Rate	0.25%	3.93%	NCLB Summer Data Collection & Fall Oasis
Students Taking the Alternate Assessment	7	228	SMS
Change in Enrollment	-9.50%	-0.76%	Fall Oasis

Teacher Qualification				
Number of Teachers	Percent Fully Licensed	Percent With Advanced Degrees	Number Nationally Board Certified	Percent of Classes Taught by "Highly Qualified Teachers"
57	100.00%	63.15%	0	92.59%

Goldenview Middle School Business Partnerships
Alaska Club South; Aurora Vending; Bird Treatment and Learning Center; GCI; Kaladi Brothers Coffee Co.; Lifetouch; Borders Books and Music; Dairy Queen

From the School Report Card

Ethnicity Report							
African-American/ Black	Alaska Native/ American Indian	Asian	Native Hawaiian/Other Pacific Islander	White	Hispanic	Multi- Ethnic	Total
10	46	42	5	590	58	59	810

From Fall Oasis

Full Academic Year		
Students Enrolled	Students Enrolled for FAY	Percent FAY
800	775	96.88%

From participation file (Grades 3-10)

Total Dropout Rate - Goldenview Middle School								
	African-American/Black	Alaska Native/American Indian	Asian	Native Hawaiian/Other Pacific Islander	White	Hispanic	Multi-Ethnic	Total
Enrollment	10	46	42	5	590	58	59	810
Final Dropouts	*	*	*	*	*	*	*	*
% of Dropouts	0.00%	2.17%	0.00%	20.00%	0.00%	0.00%	0.00%	0.25%

From NCLB Summer Data Collection and Fall OASIS

* Results cannot be published without releasing personally identifiable information based upon the EED reporting protocol

**Goldenview Middle School
2007-08 Adequate Yearly Progress
Status Report**

Does Not Meet AYP
Level 2

AMO For Language Arts: 77.18%
AMO For Mathematics: 66.09%

Group	Participation Rate				"FAY" (D) Tested & Enrolled "FAY"	Language Arts Performance				Mathematics Performance			
	(A) Number Enrolled	(B) Number Tested	Participation Rate (%)	(C) Participation Rate Met		(E) Proficient on LA	(F) Percent Proficient on LA	(G) LA Target	(H) Met AMO for LA	(I) Proficient on Mathematics	(J) Percent Proficient in Mathematics	(K) Mathematics Target	(L) Met AMO for Mathematics
All Students	799	799	100%	Yes	772	684	88.6%	73.7%	Yes	644	83.4%	62.1%	Yes
AF AM	11	11	N/A	N/A	N/A	N/A	N/A	N/A	N/A	N/A	N/A	N/A	N/A
AKNA/AI	42	42	100%	Yes	40	35	87.5%	61.7%	Yes	28	70%	48.6%	Yes
Asian/NH/OPI	47	47	100%	Yes	44	36	81.8%	62.4%	Yes	36	81.8%	49.5%	Yes
White	580	580	100%	Yes	568	510	89.8%	73.1%	Yes	487	85.7%	61.5%	Yes
Hispanic	59	59	100%	Yes	53	44	83%	63.7%	Yes	39	73.6%	50.9%	Yes
ME	60	60	100%	Yes	57	51	89.5%	64.2%	Yes	45	78.9%	51.5%	Yes
EDS	91	91	100%	Yes	77	48	62.3%	66%	No	45	58.4%	53.5%	Yes
SWD	71	71	100%	Yes	67	34	50.7%	65.2%	Yes-SH	29	43.3%	52.6%	No
LEP	63	63	100%	Yes	53	35	66%	63.7%	Yes	35	66%	50.9%	Yes

Attendance Rate: Met

93.4% (Threshold is 85%)

N/A is used to indicate:

- (1) Subgroups with 20 or fewer students enrolled on the first day of testing shall not be included in participation rate calculation.
- (2) Subgroups with 25 or fewer students enrolled for the "full academic year" shall not have the performance score computed.

* For the groups where the number enrolled is less than or equal to 40, participation is met when no more than two miss the test. Groups can also meet this target using the average of the past two or three years.

** When a group achieves a "Yes" without meeting the listed target, it has done so using either the 99% confidence interval or Safe Harbor.

*** The results cannot be published without releasing personally identifiable information based upon the EED reporting protocol.

This document was prepared by the ASD Assessment and Evaluation Department.

7/10/2008

Goldenview Middle School
2007-08 Adequate Yearly Progress
Growth Report

The AYP growth reports are generated by the Alaska State Department of Education and Early Development. The reports can be found online at: http://www.asdk12.org/depts/assess_eval/AYP/State_AS_D_AYG_0708.pdf

SBA Proficiency Comparison by Grade for Goldenview Middle School																
	Reading Percent Proficient				Writing Percent Proficient				Mathematics Percent Proficient				Science* Percent Proficient			
	04-05	05-06	06-07	07-08	04-05	05-06	06-07	07-08	04-05	05-06	06-07	07-08	04-05	05-06	06-07	07-08
All Students	91.69%	92.90%	93.16%	93.14%	88.69%	91.22%	86.27%	84.99%	82.22%	83.67%	86.32%	83.84%	N/A	N/A	N/A	73.35%
Grade 7	91.15%	91.11%	91.77%	90.69%	88.18%	87.75%	85.12%	79.20%	82.43%	79.78%	85.64%	84.84%	N/A	N/A	N/A	N/A
Grade 8	92.18%	94.94%	94.48%	95.38%	89.17%	95.18%	87.36%	90.27%	82.03%	88.10%	86.96%	82.93%	N/A	N/A	N/A	73.35%

* 2007-08 was the first year Science was administered for grades 4, 8 and 10 on the SBA.

SBA Proficient & Not Proficient by NCLB Groups for Goldenview Middle School								
	Reading		Writing		Mathematics		Science	
	Percent Proficient	Percent Not Proficient	Percent Proficient	Percent Not Proficient	Percent Proficient	Percent Not Proficient	Percent Proficient	Percent Not Proficient
All Students	93.14%	6.86%	84.99%	15.01%	83.84%	16.16%	73.35%	26.65%
AF AM	80% or more	20% or fewer	80% or more	20% or fewer	80% or more	20% or fewer	*	*
AKNA/AI	95% or more	5% or fewer	75.00%	25.00%	70.73%	29.27%	70.00%	30.00%
Asian	88.10%	11.90%	76.19%	23.81%	76.74%	23.26%	50.00%	50.00%
NH/OPI	*	*	*	*	*	*	*	*
White	93.39%	6.61%	87.28%	12.72%	87.02%	12.98%	77.70%	22.30%
Hispanic	89.29%	10.71%	78.57%	21.43%	70.69%	29.31%	61.29%	38.71%
Multi-Ethnic	95.00%	5.00%	81.67%	18.33%	78.33%	21.67%	56.67%	43.33%
EDS	80.00%	20.00%	59.30%	40.70%	58.62%	41.38%	41.67%	58.33%
Non-EDS	94.73%	5.27%	88.14%	11.86%	86.98%	13.02%	77.56%	22.44%
SWD	67.27%	32.73%	45.45%	54.55%	47.27%	52.73%	44.00%	56.00%
Non-SWD	95.08%	4.92%	87.96%	12.04%	86.59%	13.41%	75.26%	24.74%
LEP	60.00%	40.00%	40.00%	60.00%	33.33%	66.67%	26.32%	73.68%
Not LEP	94.45%	5.55%	86.77%	13.23%	86.06%	13.94%	75.64%	24.36%
Migrant	90% or more	10% or fewer	90% or more	10% or fewer	76.19%	23.81%	58.33%	41.67%
Not Migrant	92.95%	7.05%	84.84%	15.16%	84.05%	15.95%	73.80%	26.20%
Female	95.17%	4.83%	91.44%	8.56%	83.16%	16.84%	72.06%	27.94%
Male	91.30%	8.70%	79.13%	20.87%	84.47%	15.53%	74.63%	25.37%

* Results cannot be published without releasing personally identifiable information based upon the EED reporting protocol

SBA Mean Scale Score Comparison by NCLB Groups for Goldenview Middle School								
	Reading		Writing		Mathematics		Science***	
	06-07	07-08	06-07	07-08	06-07	07-08	06-07	07-08
All Students	404.29	402.48	381.07	376.83	378.81	376.86	N/A	345.33
AF AM	341.26	398.50	302.78	368.10	314.26	381.30	N/A	*
AKNA/AI	372.22	389.15	342.12	341.68	347.43	355.00	N/A	334.90
Asian	396.55**	379.02	378.10**	360.12	391.06**	361.81	N/A	300.44
NH/OPI	N/A	*	N/A	*	N/A	*	N/A	*
White	411.88	408.79	390.60	384.70	386.43	385.12	N/A	353.72
Hispanic	390.77	388.38	358.06	361.91	357.72	348.97	N/A	327.16
ME	396.91	380.17	368.67	352.22	354.86	350.08	N/A	312.77
EDS	361.81	357.61	329.91	329.95	328.15	325.40	N/A	294.69
Non-EDS	410.82	407.91	389.05	382.59	386.68	383.26	N/A	352.06
SWD	314.26	325.44	282.91	290.80	288.48	296.96	N/A	286.36
Non-SWD	412.27	408.27	389.80	383.31	386.81	382.87	N/A	349.17
LEP	372.60	315.93	350.02	294.10	346.23	300.18	N/A	275.89
Not LEP	406.07	405.91	382.86	380.12	380.76	380.22	N/A	348.71
Migrant	368.14	395.19	323.05	371.29	334.19	349.76	N/A	318.00
Not Migrant	405.21	402.68	382.55	376.99	379.94	377.60	N/A	346.16
Female	415.19	410.45	401.87	397.85	381.61	374.09	N/A	343.46
Male	393.70	395.29	360.90	357.76	376.08	379.37	N/A	347.19

* Results cannot be published without releasing personally identifiable information based upon the EED reporting protocol

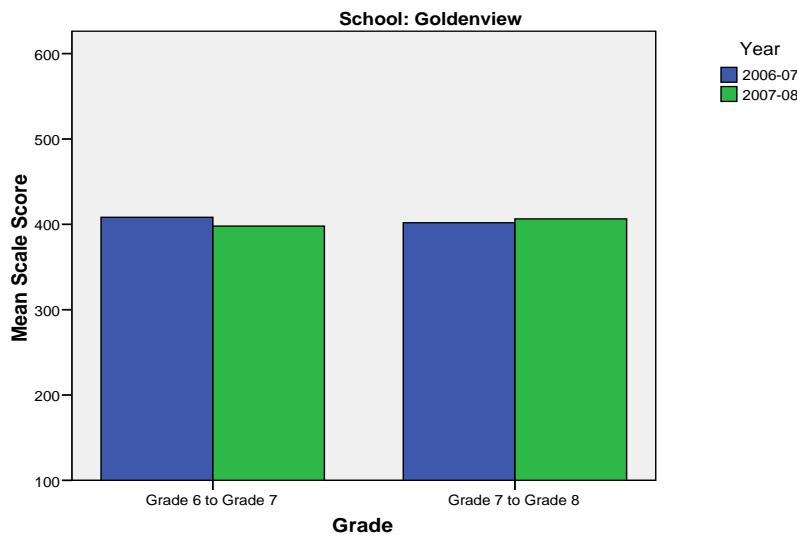
** Prior to 2007-08 the Asian category includes Native Hawaiian/Other Pacific Islander. In 2007-08 Native Hawaiian/Other Pacific Islander is a separate ethnic category.

*** 2007-08 was the first year Science was administered for grades 4, 8 and 10 on the SBA.

Goldenview Middle School SBA Change Average Scale Score by NCLB Groups: Reading						
	Average Scale Score of Students Tested in District Both Years			Average Scale Score of Students Tested in District Both Years		
	Grade 6-in 06-07	Grade 7 in 07-08	Difference	Grade 7-in 06-07	Grade 8 in 07-08	Difference
All Students	408.24	397.92	-10.32	401.95	406.44	4.49
African-American/Black	414.71	396.29	-18.43	*	*	*
Alaska Native/American Indian	373.00	367.68	-5.32	404.30	404.40	0.10
Asian	373.09	376.09	3.00	357.75	385.69	27.94
Native Hawaiian/Other Pacific Islander	*	*	*	*	*	*
White	418.82	405.51	-13.31	408.00	411.79	3.79
Hispanic	375.33	383.19	7.86	395.86	403.29	7.43
Multi-Ethnic (2 or More Races)	395.21	382.75	-12.46	373.14	369.32	-3.82
Economically Disadvantaged	363.89	350.41	-13.49	367.05	368.60	1.55
Non-Economically Disadvantaged	413.69	403.76	-9.93	406.30	411.15	4.85
Students with Disabilities	324.86	316.62	-8.24	323.63	333.96	10.33
Students without Disabilities	416.06	405.55	-10.51	407.24	411.34	4.09
LEP	289.82	282.64	-7.18	316.93	342.93	26.00
Not LEP	412.22	401.80	-10.43	405.21	408.87	3.66
Migrant	409.11	403.78	-5.33	401.42	388.75	-12.67
Not Migrant	408.21	397.76	-10.46	401.96	407.01	5.05
Female	417.41	407.90	-9.51	411.79	413.23	1.44
Male	400.83	389.86	-10.97	392.66	400.02	7.36

* Results cannot be published without releasing personally identifiable information based upon the EED reporting protocol

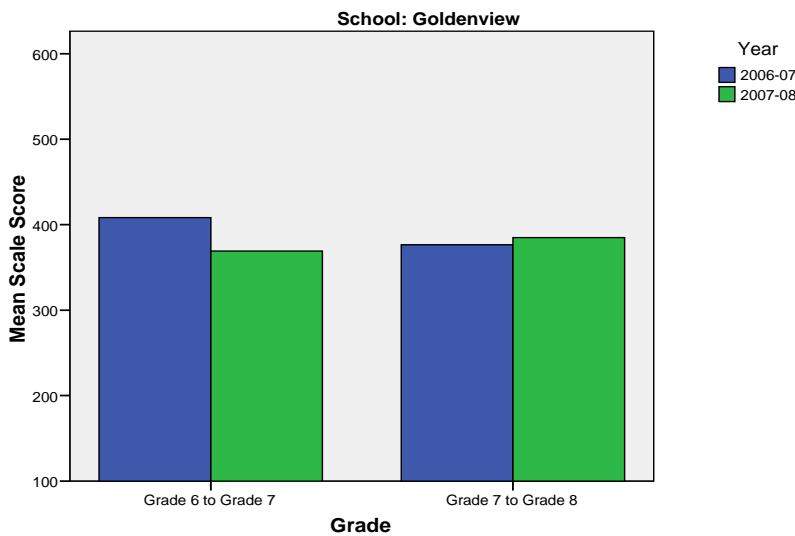
Change in Mean Scale Score in SBA Reading by Grade Between 2006-07 and 2007-08



Goldenview Middle School SBA Change Average Scale Score by NCLB Groups: Writing						
	Average Scale Score of Students Tested in District Both Years			Average Scale Score of Students Tested in District Both Years		
	Grade 6-in 06-07	Grade 7 in 07-08	Difference	Grade 7-in 06-07	Grade 8 in 07-08	Difference
All Students	408.26	369.21	-39.05	376.36	384.88	8.53
African-American/Black	406.86	368.71	-38.14	*	*	*
Alaska Native/American Indian	361.89	317.11	-44.79	361.20	358.75	-2.45
Asian	390.57	359.96	-30.61	368.25	362.81	-5.44
Native Hawaiian/Other Pacific Islander	*	*	*	*	*	*
White	416.65	377.29	-39.35	384.21	392.72	8.51
Hispanic	405.36	356.82	-48.55	368.00	380.07	12.07
Multi-Ethnic (2 or More Races)	388.64	354.93	-33.71	321.30	344.59	23.30
Economically Disadvantaged	352.24	316.22	-36.03	333.77	346.70	12.93
Non-Economically Disadvantaged	415.15	375.72	-39.43	381.84	389.80	7.96
Students with Disabilities	312.72	280.59	-32.14	278.29	299.67	21.38
Students without Disabilities	417.23	377.52	-39.70	383.03	390.68	7.65
LEP	275.09	263.09	-12.00	319.43	314.36	-5.07
Not LEP	412.74	372.78	-39.96	378.55	387.60	9.05
Migrant	402.00	364.44	-37.56	349.08	376.42	27.33
Not Migrant	408.43	369.34	-39.09	377.25	385.16	7.91
Female	427.03	393.95	-33.07	398.12	404.88	6.76
Male	393.11	349.22	-43.88	355.61	365.82	10.21

* Results cannot be published without releasing personally identifiable information based upon the EED reporting protocol

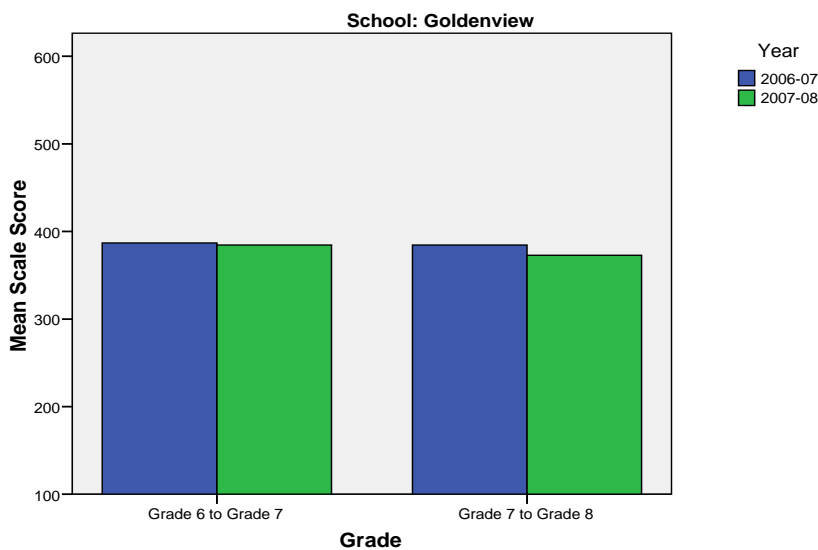
Change in Mean Scale Score in SBA Writing by Grade between 2006-07 and 2007-08



Goldenview Middle School SBA Change Average Scale Score by NCLB Groups: Mathematics						
	Average Scale Score of Students Tested in District Both Years			Average Scale Score of Students Tested in District Both Years		
	Grade 6-in 06-07	Grade 7 in 07-08	Difference	Grade 7-in 06-07	Grade 8 in 07-08	Difference
All Students	386.82	384.50	-2.32	384.59	372.76	-11.83
African-American/Black	389.14	400.71	11.57	*	*	*
Alaska Native/American Indian	330.68	325.84	-4.84	383.81	375.43	-8.38
Asian	378.35	372.48	-5.87	385.53	354.88	-30.65
Native Hawaiian/Other Pacific Islander	*	*	*	*	*	*
White	393.70	394.59	0.89	390.81	379.74	-11.06
Hispanic	381.05	372.23	-8.82	369.83	346.07	-23.76
Multi-Ethnic (2 or More Races)	382.57	358.04	-24.54	338.74	340.33	1.59
Economically Disadvantaged	343.64	328.44	-15.19	335.33	331.60	-3.72
Non-Economically Disadvantaged	391.99	391.21	-0.78	390.95	378.08	-12.88
Students with Disabilities	307.61	292.61	-15.00	305.24	300.48	-4.76
Students without Disabilities	394.00	392.83	-1.17	390.25	377.91	-12.33
LEP	301.36	279.64	-21.73	342.44	318.00	-24.44
Not LEP	389.71	388.04	-1.67	386.47	375.20	-11.27
Migrant	377.00	367.89	-9.11	343.00	336.17	-6.83
Not Migrant	387.09	384.96	-2.13	385.96	373.97	-11.99
Female	383.50	382.28	-1.22	384.25	369.31	-14.93
Male	389.53	386.31	-3.22	384.92	376.04	-8.89

* Results cannot be published without releasing personally identifiable information based upon the EED reporting protocol

Change in Mean Scale Score in SBA Mathematics by Grade between 2006-07 and 2007-08



Reading: SBA Results Compared for Goldenview Middle School, District and State Grades 7 and 8															
	% Advanced Proficient			% Proficient			% Below Proficient			% Far Below Proficient			% Tested		
	School	District	State	School	District	State	School	District	State	School	District	State	School	District	State
All Students	52.86%	36.46%	34.57%	40.28%	48.69%	48.62%	6.35%	11.55%	12.88%	0.51%	3.29%	3.93%	98.50%	97.85%	97.86%
AF AM	60.00%	19.00%	20.66%	40.00%	58.30%	57.93%	*	17.03%	15.72%	*	5.68%	5.69%	90.91%	97.86%	98.38%
AKNA/AI	45.00%	19.97%	15.19%	50.00%	52.76%	51.58%	*	20.94%	25.14%	*	6.33%	8.08%	95.24%	95.36%	96.93%
Asian	45.24%	28.61%	27.53%	42.86%	54.01%	53.96%	*	13.72%	14.90%	*	3.65%	3.60%	97.67%	97.58%	97.49%
NH/OPI	*	8.40%	N/A	*	53.78%	N/A	*	28.57%	N/A	*	9.24%	N/A	100.00%	98.76%	N/A
White	56.17%	47.51%	45.02%	37.22%	43.41%	45.22%	*	7.25%	7.53%	*	1.83%	2.22%	99.14%	98.46%	98.29%
Hispanic	44.64%	27.54%	28.38%	44.64%	55.39%	54.32%	*	13.17%	13.31%	*	3.89%	3.98%	94.92%	97.80%	98.00%
ME	36.67%	30.61%	32.24%	58.33%	52.80%	52.18%	*	12.80%	12.02%	*	3.78%	3.56%	100.00%	97.04%	97.23%
EDS	27.06%	18.54%	20.30%	52.94%	54.95%	51.97%	*	20.04%	20.88%	*	6.47%	6.84%	93.41%	96.31%	95.86%
Not EDS	55.98%	46.21%	43.42%	38.75%	45.29%	46.55%	4.84%	6.93%	7.91%	0.43%	1.57%	2.12%	99.15%	98.71%	99.14%
SWD	7.27%	5.65%	5.39%	60.00%	39.65%	39.16%	27.27%	37.65%	36.10%	5.45%	17.06%	19.35%	87.30%	90.81%	92.10%
Non SWD	56.28%	40.59%	38.46%	38.80%	49.91%	49.89%	*	8.05%	9.78%	*	1.45%	1.87%	99.46%	98.88%	98.68%
LEP	10.00%	4.34%	3.40%	50.00%	52.25%	45.68%	30.00%	31.74%	37.23%	10.00%	11.68%	13.69%	88.24%	95.57%	96.43%
Not LEP	54.56%	39.75%	38.87%	39.89%	48.33%	49.03%	*	9.49%	9.52%	*	2.44%	2.58%	98.95%	98.09%	98.06%
Migrant	38.10%	23.05%	18.13%	61.90%	50.51%	49.19%	*	20.34%	25.53%	*	6.10%	7.15%	100.00%	98.33%	98.16%
Not Migrant	53.26%	37.03%	35.71%	39.69%	48.62%	48.58%	6.53%	11.18%	12.00%	0.52%	3.17%	3.71%	98.46%	97.83%	97.84%
Female	57.91%	39.92%	38.60%	37.27%	49.13%	48.79%	*	8.92%	10.13%	*	2.04%	2.48%	98.94%	98.14%	98.03%
Male	48.31%	33.21%	30.74%	43.00%	48.29%	48.47%	7.97%	14.03%	15.49%	0.72%	4.48%	5.30%	98.10%	97.58%	97.70%

* Results cannot be published without releasing personally identifiable information based upon the EED reporting protocol

Writing: SBA Results Compared for Goldenview Middle School, District and State Grades 7 and 8															
	% Advanced Proficient			% Proficient			% Below Proficient			% Far Below Proficient			% Tested		
	School	District	State	School	District	State	School	District	State	School	District	State	School	District	State
All Students	18.07%	11.86%	10.41%	66.92%	62.70%	61.09%	12.21%	18.67%	20.92%	2.80%	6.77%	7.58%	98.37%	97.97%	97.77%
AF AM	*	4.39%	4.97%	70.00%	57.68%	58.58%	*	28.29%	27.26%	*	9.65%	9.19%	90.91%	97.44%	97.79%
AKNA/AI	*	3.72%	2.85%	*	50.89%	46.57%	17.50%	31.02%	34.58%	7.50%	14.38%	15.99%	95.24%	95.82%	97.09%
Asian	9.52%	9.18%	8.28%	66.67%	62.10%	62.39%	*	21.87%	22.29%	*	6.85%	7.04%	97.67%	97.72%	97.64%
NH/OPI	*	*	N/A	*	*	N/A	*	33.47%	N/A	*	16.74%	N/A	100.00%	99.17%	N/A
White	20.73%	16.21%	14.37%	66.55%	66.42%	66.50%	10.28%	13.35%	14.89%	2.44%	4.01%	4.25%	98.97%	98.59%	98.10%
Hispanic	17.86%	10.06%	8.18%	60.71%	61.71%	63.88%	14.29%	19.97%	21.03%	7.14%	8.26%	6.91%	94.92%	97.51%	97.81%
ME	8.33%	9.36%	9.88%	73.33%	62.82%	62.78%	*	20.05%	20.12%	*	7.78%	7.21%	100.00%	97.40%	97.23%
EDS	5.81%	3.77%	4.20%	53.49%	54.85%	53.45%	30.23%	28.17%	29.69%	10.47%	13.20%	12.66%	94.51%	96.69%	95.78%
Not EDS	19.57%	16.27%	14.27%	68.57%	66.98%	65.82%	10.00%	13.48%	15.47%	1.86%	3.26%	4.43%	98.87%	98.69%	99.05%
SWD	*	0.94%	0.72%	*	26.86%	25.75%	36.36%	42.99%	44.66%	18.18%	29.21%	28.86%	87.30%	90.71%	91.85%
Non SWD	19.29%	13.31%	11.70%	68.67%	67.49%	65.79%	10.40%	15.42%	17.76%	1.64%	3.78%	4.75%	99.32%	99.03%	98.62%
LEP	*	1.05%	0.57%	*	38.02%	31.72%	40.00%	41.62%	45.08%	20.00%	19.31%	22.63%	88.24%	95.57%	96.60%
Not LEP	18.78%	12.96%	11.78%	67.99%	65.22%	65.15%	11.11%	16.33%	17.58%	2.12%	5.49%	5.50%	98.82%	98.23%	97.94%
Migrant	14.29%	4.38%	3.57%	76.19%	55.56%	48.98%	*	27.95%	33.31%	*	12.12%	14.13%	100.00%	99.00%	98.24%
Not Migrant	18.17%	12.18%	10.89%	66.67%	63.00%	61.93%	12.29%	18.27%	20.06%	2.88%	6.55%	7.12%	98.33%	97.93%	97.74%
Female	24.87%	16.61%	14.82%	66.58%	65.43%	64.82%	6.42%	14.21%	16.01%	2.14%	3.75%	4.35%	99.20%	98.42%	98.00%
Male	11.89%	7.37%	6.23%	67.23%	60.12%	57.53%	17.48%	22.88%	25.59%	3.40%	9.63%	10.65%	97.63%	97.55%	97.56%

* Results cannot be published without releasing personally identifiable information based upon the EED reporting protocol

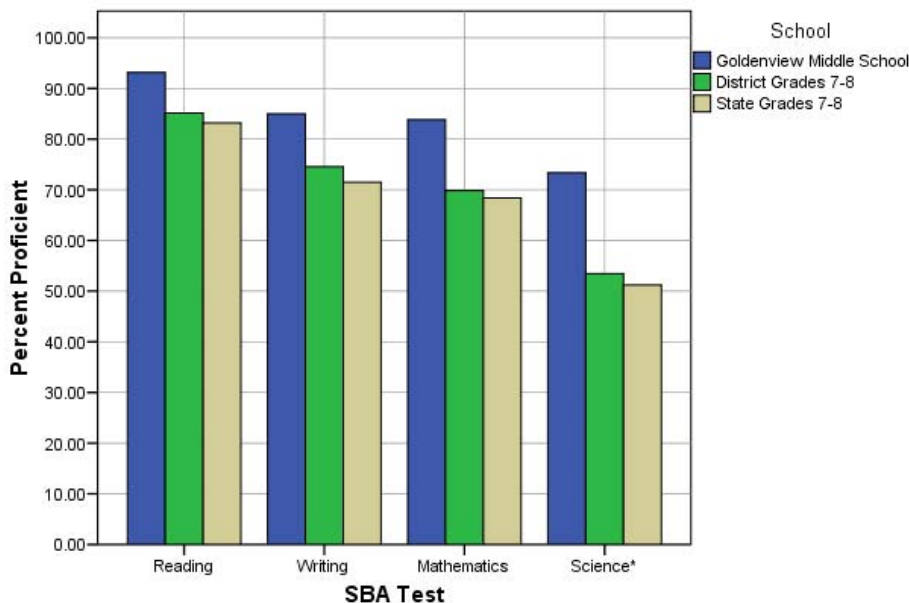
Mathematics: SBA Results Compared for Goldenview Middle School, District and State Grades 7 and 8															
	% Advanced Proficient			% Proficient			% Below Proficient			% Far Below Proficient			% Tested		
	School	District	State	School	District	State	School	District	State	School	District	State	School	District	State
All Students	50.25%	31.33%	29.02%	33.59%	38.49%	39.36%	11.45%	17.87%	18.72%	4.71%	12.31%	12.90%	98.37%	97.81%	97.73%
AF AM	50.00%	12.58%	14.65%	50.00%	35.54%	36.40%	*	28.26%	26.44%	*	23.62%	22.51%	90.91%	96.79%	97.50%
AKNA/AI	43.90%	17.89%	14.46%	26.83%	34.80%	35.46%	17.07%	25.04%	26.44%	12.20%	22.28%	23.64%	97.62%	95.20%	96.77%
Asian	46.51%	29.58%	27.87%	30.23%	40.26%	40.20%	16.28%	18.76%	18.72%	6.98%	11.40%	13.21%	100.00%	98.72%	98.64%
NH/OPI	*	6.67%	N/A	*	35.42%	N/A	*	26.67%	N/A	*	31.25%	N/A	100.00%	99.59%	N/A
White	54.04%	40.28%	36.66%	32.98%	38.52%	40.75%	9.30%	13.95%	14.82%	3.68%	7.25%	7.77%	98.28%	98.19%	98.00%
Hispanic	39.66%	22.65%	22.24%	31.03%	40.98%	41.68%	18.97%	21.61%	22.44%	10.34%	14.75%	13.64%	98.31%	98.24%	98.48%
ME	31.67%	27.20%	28.57%	46.67%	40.12%	39.73%	*	18.05%	18.13%	*	14.63%	13.57%	100.00%	97.04%	96.97%
EDS	25.29%	15.55%	16.77%	33.33%	37.90%	38.20%	25.29%	24.48%	24.34%	16.09%	22.08%	20.69%	95.60%	96.54%	95.81%
Not EDS	53.36%	39.96%	36.63%	33.62%	38.82%	40.08%	9.73%	14.26%	15.23%	3.29%	6.97%	8.06%	98.73%	98.52%	98.96%
SWD	9.09%	5.81%	5.39%	38.18%	20.26%	22.07%	21.82%	26.66%	28.40%	30.91%	47.27%	44.13%	87.30%	90.17%	92.02%
Non SWD	53.35%	34.73%	32.17%	33.24%	40.92%	41.67%	10.67%	16.70%	17.43%	2.74%	7.66%	8.73%	99.32%	98.92%	98.54%
LEP	24.24%	5.73%	4.98%	9.09%	30.10%	27.54%	33.33%	32.01%	32.96%	33.33%	32.16%	34.52%	97.06%	97.42%	97.06%
Not LEP	51.39%	34.01%	32.36%	34.66%	39.37%	41.00%	10.49%	16.39%	16.74%	3.45%	10.23%	9.89%	98.43%	97.85%	97.82%
Migrant	33.33%	17.29%	17.58%	42.86%	40.68%	36.29%	*	22.37%	25.14%	*	19.66%	20.99%	100.00%	98.33%	98.08%
Not Migrant	50.72%	31.93%	29.81%	33.33%	38.40%	39.57%	11.11%	17.68%	18.28%	4.84%	11.99%	12.34%	98.33%	97.79%	97.70%
Female	47.06%	30.98%	28.90%	36.10%	39.19%	40.85%	12.83%	18.89%	19.04%	4.01%	10.94%	11.22%	99.20%	98.31%	98.00%
Male	53.16%	31.67%	29.13%	31.31%	37.83%	37.94%	10.19%	16.90%	18.42%	5.34%	13.60%	14.50%	97.63%	97.34%	97.46%

* Results cannot be published without releasing personally identifiable information based upon the EED reporting protocol

Science: SBA Results Compared for Goldenview Middle School, District and State Grade 8															
	% Advanced Proficient			% Proficient			% Below Proficient			% Far Below Proficient			% Tested		
	School	District	State	School	District	State	School	District	State	School	District	State	School	District	State
All Students	40.83%	27.02%	25.2%	32.52%	26.43%	26.0%	16.63%	20.65%	21.3%	10.02%	25.90%	27.4%	98.08%	96.39%	94.91%
AF AM	*	10.34%	10.7%	*	19.40%	21.1%	*	25.43%	26.1%	*	44.83%	42.1%	100.00%	96.27%	94.36%
AKNA/AI	30.00%	10.33%	8.9%	40.00%	25.84%	18.0%	15.00%	21.88%	23.7%	15.00%	41.95%	49.4%	90.91%	93.47%	93.67%
Asian	22.22%	16.86%	16.1%	27.78%	22.00%	23.2%	27.78%	26.57%	25.5%	22.22%	34.57%	35.2%	100.00%	97.77%	97.29%
NH/OPI	*	6.42%	N/A	*	11.93%	N/A	*	17.43%	N/A	*	64.22%	N/A	100.00%	99.09%	N/A
White	45.57%	38.15%	35.1%	32.13%	29.71%	30.0%	14.10%	17.80%	19.0%	8.20%	14.34%	15.9%	98.39%	96.75%	95.14%
Hispanic	32.26%	16.57%	15.8%	29.03%	25.60%	27.5%	25.81%	27.11%	26.3%	12.90%	30.72%	30.4%	96.88%	96.79%	95.92%
ME	20.00%	21.93%	23.0%	36.67%	24.28%	24.2%	26.67%	20.37%	20.9%	16.67%	33.42%	31.9%	100.00%	95.04%	93.83%
EDS	14.58%	10.38%	12.3%	27.08%	21.96%	21.1%	25.00%	22.76%	22.7%	33.33%	44.89%	43.9%	97.96%	94.85%	93.13%
Not EDS	44.32%	35.95%	33.1%	33.24%	28.83%	29.0%	15.51%	19.52%	20.5%	6.93%	15.70%	17.4%	98.10%	97.25%	96.02%
SWD	*	4.72%	4.3%	*	11.32%	9.4%	32.00%	20.28%	18.8%	24.00%	63.68%	67.5%	86.21%	89.45%	89.82%
Non SWD	42.97%	30.01%	28.0%	32.29%	28.46%	28.2%	15.63%	20.70%	21.6%	9.11%	20.83%	22.1%	98.97%	97.41%	95.62%
LEP	*	2.59%	1.7%	*	7.78%	6.0%	31.58%	21.90%	18.4%	42.11%	67.72%	73.5%	100.00%	98.02%	94.82%
Not LEP	42.31%	29.64%	28.5%	33.33%	28.43%	28.8%	15.90%	20.52%	21.7%	8.46%	21.42%	21.0%	97.99%	96.22%	94.92%
Migrant	25.00%	13.46%	11.5%	33.33%	28.85%	20.9%	*	19.87%	20.2%	*	37.82%	47.4%	100.00%	93.41%	95.03%
Not Migrant	41.31%	27.63%	26.2%	32.49%	26.32%	26.4%	16.12%	20.69%	21.4%	10.08%	25.36%	26.1%	98.02%	96.54%	94.90%
Female	42.65%	25.67%	23.7%	29.41%	26.30%	27.0%	18.14%	22.06%	22.4%	9.80%	25.96%	27.0%	99.51%	96.89%	95.23%
Male	39.02%	28.29%	26.8%	35.61%	26.55%	25.1%	15.12%	19.31%	20.3%	10.24%	25.84%	27.8%	96.70%	95.93%	94.60%

* Results cannot be published without releasing personally identifiable information based upon the EED reporting protocol

2007-08 SBA Results Compared for Goldenview Middle School, District and State

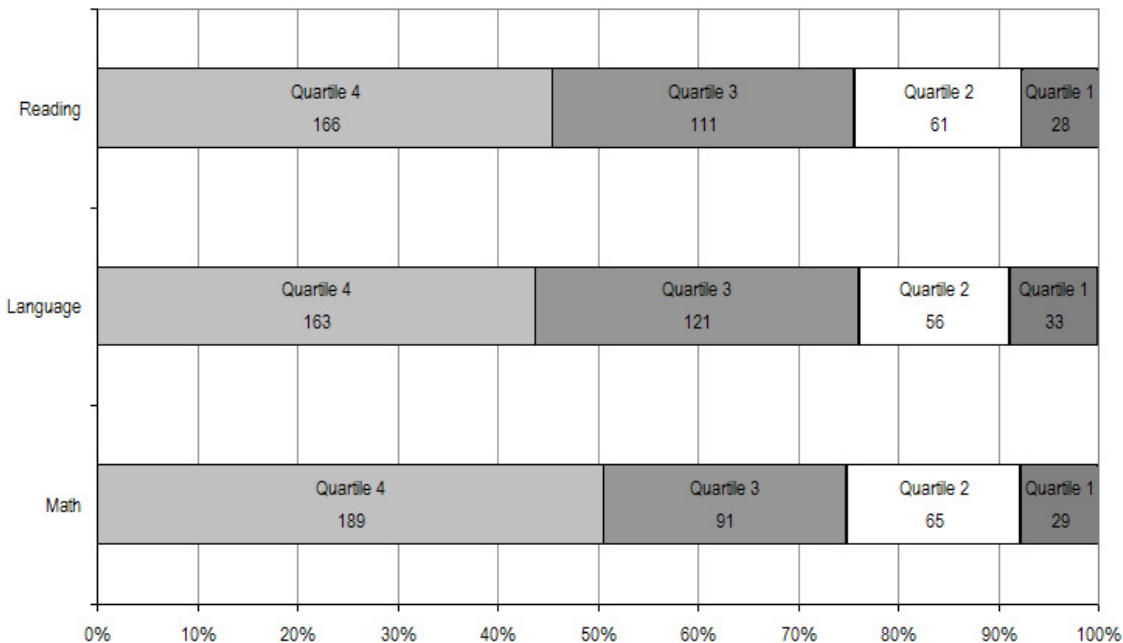


* 2007-08 was the first year Science was administered for grades 4, 8 and 10 on the SBA.

Goldenview Middle School TerraNova Grade 7 Percent in Each Quartile								
Reading	Above Average		Average				Below Average	
	4th Quartile (76-99 percentile)		3rd Quartile (51-75 percentile)		2nd Quartile (26-50 percentile)		1st Quartile (1-25 percentile)	
	School	District	School	District	School	District	School	District
07-08	45.36%	30.31%	30.33%	32.50%	16.67%	24.54%	7.65%	12.66%
06-07	52.1%	35.6%	28.5%	28.0%	13.6%	21.5%	5.8%	14.9%
05-06	53.3%	34.6%	27.4%	28.4%	12.6%	21.8%	6.7%	15.3%
04-05	52.8%	33.9%	29.2%	27.1%	12.0%	21.7%	5.9%	17.4%
03-04	52.8%	35.1%	29.6%	28.2%	11.6%	21.4%	5.9%	15.3%
Language								
07-08	43.70%	30.26%	32.44%	29.23%	15.01%	25.08%	8.85%	15.43%
06-07	49.9%	35.4%	28.5%	28.7%	15.1%	21.5%	6.6%	14.3%
05-06	51.0%	34.9%	29.9%	28.4%	12.6%	21.4%	6.4%	15.3%
04-05	52.3%	34.4%	29.7%	28.2%	12.5%	20.5%	5.4%	16.9%
03-04	50.1%	35.3%	30.8%	28.5%	12.3%	21.7%	6.8%	14.5%
Mathematics								
07-08	50.53%	32.27%	24.33%	26.81%	17.38%	24.16%	7.75%	16.76%
06-07	46.4%	31.5%	33.0%	28.3%	12.9%	23.0%	7.8%	17.2%
05-06	47.9%	31.4%	29.1%	27.8%	14.2%	23.4%	8.8%	17.4%
04-05	49.1%	29.7%	24.6%	26.4%	17.7%	22.9%	8.6%	20.9%
03-04	44.1%	30.2%	31.8%	27.6%	17.0%	23.9%	7.0%	18.4%

The double bold line indicates a change from the TerraNova 2nd edition to the TerraNova 3rd edition.

2007-08 TerraNova 3rd Edition Grade 7 Percent and Count of Students in Each Quartile for Goldenview Middle School



Climate Survey Results for Goldenview Middle School

The Anchorage School District administered the School Climate and Connectedness Surveys in spring 2008 to students in grades 5-12, all school staff and parents/guardians of students in grades K-12. The surveys were done to provide schools with information about perceptions and experiences related to school climate for use in setting school goals and redirecting resources. In the spring of 2008 grades 3 and 4 students were involved in a pilot survey for measuring school climate and connectedness. The results are currently under review by the American Institutes for Research.

Respondents were asked to answer a series of questions that were related to a certain concept. For each item, there were five options from which to choose a response. The answer options ranged from strongly disagree (1) to strongly agree (5).

Student Survey Response Rate Grades 5-12			
	Goldenview Middle School	Overall Middle Schools	District**
# Surveys Completed	717	5,722	21,629
# Reportable Surveys	606	5,021	18,508
# Students Enrolled*	800	7,188	28,945
Reportable Response Rate	75.75%	69.85%	63.94%

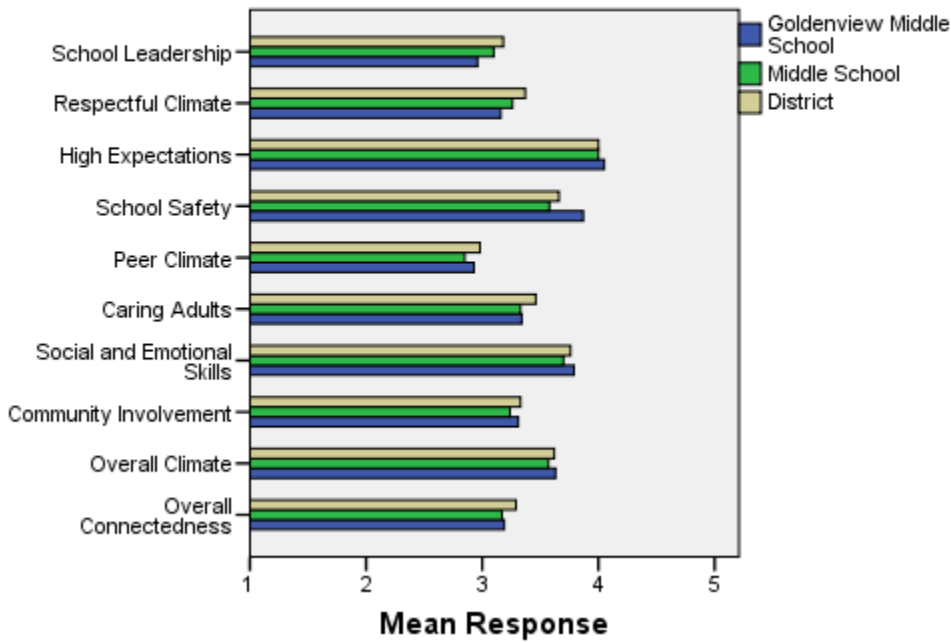
*Number enrolled as of April 1, 2008

**District data does not include KCC responses

Each question in the survey related to a factor or concept, and a score was calculated based on the mean response for the questions related to each factor. The factors measured in the survey were:

- **School Leadership and Student Involvement:** This factor reflects students' feelings about the decision making of school leaders as well as student participation in the school governance. Students selected responses between 1 and 5 where 1 indicates a low level of school leadership and student involvement and 5 indicates a high level of school leadership and student involvement.
- **Respectful Climate:** This factor reflects students' feelings about fairness of rules and respect for students' contributions. Students selected responses between 1 and 5 where 1 indicates a lack of a respectful climate and 5 indicates a highly respectful climate for students.
- **High Expectations:** This factor reflects students' feelings about their own expectations as well as those of adults in their school and community. Students selected responses between 1 and 5 where 1 indicates a lack of high expectations and 5 indicates a high level of high expectations.
- **School Safety:** This factor reflects students' feelings about bullies and gangs at school as well as general crime and violence in the community. Students selected responses between 1 and 5 where 1 indicates a low level of school safety and 5 indicates a high level of school safety.
- **Peer Climate:** This factor reflects students' feelings about how respectful students are to one another and how helpful students are to other students. Students selected responses between 1 and 5 where 1 indicates a more negative peer climate and 5 indicates a very positive peer climate at the school.
- **Caring Adults:** This factor reflects students' feelings about how close they feel to adults in the school. Students selected responses between 1 and 5 where 1 indicates a lack of caring adult relationships and 5 indicates strong caring adult relationships at the school.
- **Social and Emotional Learning:** This factor reflects students' ability to think about the consequences of their actions and to empathize with others. Students selected responses between 1 and 5 where 1 indicates that students at the school perceive themselves as having poorer social and emotional learning, and 5 indicates higher levels of social and emotional learning.
- **Community Involvement:** This factor reflects students' feelings about how supportive and welcoming the school is with parents and the community. Students selected responses between 1 and 5 where 1 indicates a less supportive and welcoming environment and 5 indicates a more supportive and welcoming environment.
- **Overall Climate:** The overall climate score was computed as the mean of three scales: school leadership, high expectations and school safety.
- **Overall Connectedness:** Overall connectedness score was computed as a mean of four scales: respectful climate, peer climate, caring adults and community involvement.

Climate and Connectedness Student Survey - Goldenview



Student Survey Mean Response by Factors Related to School Climate - Overall District			
	Goldenview Middle School	Overall Middle Schools	District
School Leadership	2.96	3.10	3.18
Respectful Climate	3.16	3.26	3.37
High Expectations	4.05	4.00	4.00
School Safety	3.87	3.58	3.66
Peer Climate	2.93	2.85	2.98
Caring Adults	3.34	3.33	3.46
Social and Emotional Skills	3.79	3.70	3.76
Community Involvement	3.31	3.24	3.33
Overall Climate	3.63	3.57	3.62
Overall Connectedness	3.19	3.17	3.29

Range is from a low of 1 to a high of 5

Students were also asked to answer questions related to school danger. The following table provides the responses for those questions:

Student Survey Results of the School Danger Questions - Percent of Students Responding in Each Category					
	0 Times	1-2 Times	3-6 Times	7-12 Times	> 12 Times
Goldenview Middle School					
Under the influence of drugs?	59.73%	21.48%	9.90%	2.52%	6.38%
Under the influence of alcohol?	64.93%	18.46%	7.38%	3.86%	5.37%
Destroy things (vandalism)?	35.19%	30.81%	18.01%	9.09%	6.90%
Get into fights?	33.22%	35.07%	18.46%	6.04%	7.21%
Steal things?	42.95%	26.66%	13.75%	8.32%	8.32%
Threaten or bully?	27.01%	27.01%	17.28%	10.74%	17.95%
Under the influence of inhalants?	66.50%	17.51%	6.90%	3.87%	5.22%
Carry weapons?	58.63%	31.16%	5.19%	2.01%	3.02%
Overall Middle Schools					
Under the influence of drugs?	64.66%	18.15%	7.88%	2.73%	6.57%
Under the influence of alcohol?	68.04%	16.94%	6.71%	3.34%	4.97%
Destroy things (vandalism)?	37.30%	30.56%	16.24%	7.13%	8.77%
Get into fights?	23.45%	34.39%	22.40%	8.21%	11.55%
Steal things?	40.02%	27.06%	14.98%	8.34%	9.60%
Threaten or bully?	28.58%	25.86%	17.04%	10.29%	18.23%
Under the influence of inhalants?	67.97%	15.45%	6.70%	3.13%	6.76%
Carry weapons?	68.29%	21.26%	4.76%	1.95%	3.75%
District					
Under the influence of drugs?	60.45%	15.05%	9.54%	3.92%	11.04%
Under the influence of alcohol?	63.11%	16.37%	8.90%	4.43%	7.19%
Destroy things (vandalism)?	41.26%	29.47%	15.45%	5.88%	7.94%
Get into fights?	26.40%	35.20%	21.96%	7.11%	9.33%
Steal things?	44.80%	25.68%	13.81%	6.98%	8.74%
Threaten or bully?	32.21%	26.21%	16.68%	9.27%	15.63%
Under the influence of inhalants?	72.79%	14.21%	5.66%	2.48%	4.87%
Carry weapons?	69.45%	19.15%	5.34%	2.01%	4.06%

Student Survey Results of the Mean Factor Score by Ethnicity (Self-Reported)							
	AKNA/AI	AF AM	Hispanic	Asian/NH	White	Other	Multi-Ethnic
Goldenview Middle School							
School Leadership	3.25	3.00	2.81	3.09	2.95	2.80	2.85
Respectful Climate	3.34	3.09	2.95	3.11	3.21	2.91	2.95
High Expectations	3.96	3.78	3.86	4.02	4.09	4.06	3.96
School Safety	3.84	3.69	3.70	3.58	3.96	3.59	3.72
Peer Climate	2.97	2.85	2.72	2.95	2.97	2.77	2.78
Caring Adults	3.49	3.46	3.16	3.06	3.38	3.25	3.25
Social and Emotional Skills	3.82	3.91	3.51	3.85	3.82	3.69	3.66
Community Involvement	3.29	3.16	3.06	3.32	3.34	3.20	3.25
Overall Climate	3.69	3.65	3.45	3.61	3.66	3.48	3.52
Overall Connectedness	3.22	3.14	3.02	3.10	3.24	3.02	3.05
Overall Middle Schools							
School Leadership	3.26	2.96	3.09	3.21	3.08	3.16	3.01
Respectful Climate	3.38	3.00	3.26	3.30	3.31	3.24	3.14
High Expectations	3.98	3.87	3.96	4.02	4.04	3.97	3.94
School Safety	3.51	3.42	3.51	3.40	3.72	3.39	3.56
Peer Climate	2.93	2.69	2.79	2.95	2.86	2.80	2.82
Caring Adults	3.38	3.23	3.24	3.24	3.40	3.31	3.28
Social and Emotional Skills	3.67	3.54	3.68	3.75	3.75	3.67	3.61
Community Involvement	3.30	3.10	3.20	3.23	3.28	3.23	3.18
Overall Climate	3.58	3.43	3.54	3.55	3.62	3.52	3.52
Overall Connectedness	3.23	2.99	3.13	3.18	3.21	3.15	3.11
District							
School Leadership	3.33	3.14	3.19	3.28	3.14	3.17	3.15
Respectful Climate	3.48	3.18	3.32	3.39	3.39	3.37	3.33
High Expectations	3.98	3.94	3.96	4.02	4.02	4.00	4.01
School Safety	3.60	3.48	3.55	3.47	3.78	3.51	3.62
Peer Climate	3.01	2.85	2.94	3.05	3.00	2.92	2.93
Caring Adults	3.49	3.43	3.37	3.33	3.51	3.42	3.46
Social and Emotional Skills	3.73	3.66	3.73	3.81	3.78	3.75	3.74
Community Involvement	3.37	3.22	3.31	3.29	3.34	3.34	3.31
Overall Climate	3.64	3.52	3.57	3.59	3.65	3.56	3.60
Overall Connectedness	3.33	3.17	3.24	3.26	3.31	3.26	3.27

Staff Survey Response Rate			
	Goldenview Middle School	Overall Middle Schools	District**
# Surveys Completed	39	522	2,980
# Reportable Surveys	39	521	2,968
# Staff Members*	83	789	5,549
Reportable Response Rate	46.99%	66.03%	53.49%

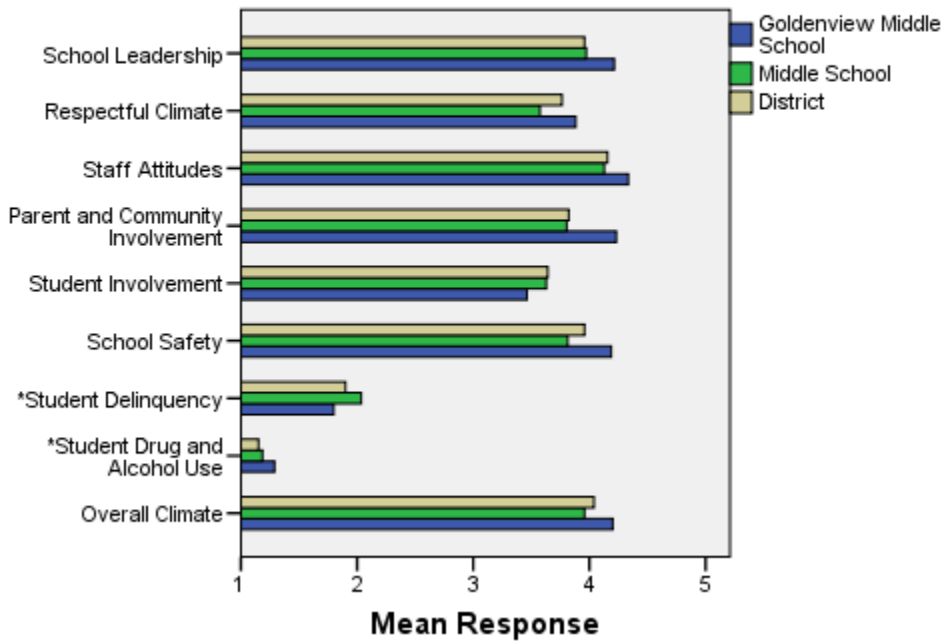
*Number staff as of April 1, 2008

**Includes KCC responses

Each question in the survey related to a factor or concept, and a score was calculated based on the mean response for the questions related to each factor. The factors were:

- **School Leadership:** This factor reflects staff members' feelings about the decision making of school leaders as well as the fairness of school rules. Staff members selected responses between 1 and 5 where 1 indicates a low level of school leadership and 5 indicates a high level of school leadership.
- **Respectful Climate:** This factor reflects staff members' feelings about how students treat each other and how well students and staff members treat one another. Staff members selected responses between 1 and 5 where 1 indicates a low level of respect and 5 indicates a high level.
- **Staff Attitudes:** This scale reflects staff members' feelings about the competence of teachers as well as how positive their attitudes are towards their jobs. Staff members selected responses between 1 and 5 where 1 indicates more negative staff attitudes and 5 indicates highly positive staff attitudes.
- **Parent and Community Involvement:** This factor reflects staff members' feelings about how accessible the school is for parents as well as how connected adults in the community are to the school. Staff members selected responses between 1 and 5 where 1 indicates a low level of parent and community involvement and 5 indicates a high level of parent and community involvement.
- **Student Involvement:** This factor reflects staff members' feeling about how involved students are in the decision making process. Staff members selected responses between 1 and 5 where 1 indicates a low level of student involvement and 5 indicates a high level of student involvement.
- **School Safety:** This factor reflects staff members' feelings about the impact of gangs and bullies as well as general crime and violence in the community. Staff members selected responses between 1 and 5 where 1 indicates a low level school safety and 5 indicates a high level of school safety.
- **Student Delinquency:** This factor uses staff members' reports of observing students getting into fights, stealing and bullying. The student delinquency and student drug and alcohol use scales differ from the other factors since the higher the score is the more negative the response. Staff members selected responses between 1 and 5 where 1 indicates a low level of student delinquency and 5 indicates a high level of student delinquency.
- **Student Drug and Alcohol Use:** This factor uses staff members' reports of observing students under the influence of drugs or alcohol. The student delinquency and student drug and alcohol use scales differ from the other factors since the higher the score is the more negative the response. Staff members selected responses between 1 and 5 where 1 indicates a low level of student drug and alcohol use and 5 indicates a high level of student drug and alcohol use.
- **Overall Climate:** Computed as the mean of 8 scales: school leadership, respectful climate, staff attitudes, parent and community involvement, student involvement, school safety, student delinquency, and drug and alcohol use scores.

Climate and Connectedness Staff Survey - Goldenview



Staff Survey Mean Response by Factors Related to School Climate - Overall District			
	Goldenview Middle School	Overall Middle Schools	District
School Leadership	4.21	3.97	3.96
Respectful Climate	3.88	3.57	3.76
Staff Attitudes	4.34	4.13	4.16
Parent & Community Involvement	4.23	3.81	3.82
Student Involvement	3.46	3.63	3.64
School Safety	4.19	3.81	3.96
Student Delinquency*	1.80	2.04	1.90
Student Drug & Alcohol Use*	1.29	1.19	1.15
Overall Climate	4.20	3.96	4.04

Range is from a low of 1 to a high of 5

*Student Drug and Alcohol Use and Student Delinquency factor scale scores differ from other factors since the higher the score is the more negative the response.

Staff members were also asked to answer questions related to school danger. The following table provides the responses for those questions:

Staff Survey Results of the School Danger Questions - Percent of Staff Responding in Each Category					
	0 Times	1-2 Times	3-6 Times	7-12 Times	> 12 Times
Goldenview Middle School					
Under the influence of drugs?	70.27%	16.22%	2.70%	8.11%	2.70%
Under the influence of alcohol?	89.19%	5.41%	5.41%	0.00%	0.00%
Destroy things (vandalism)?	40.54%	32.43%	13.51%	10.81%	2.70%
Get into fights?	67.57%	16.22%	8.11%	2.70%	5.41%
Steal things?	40.54%	45.95%	10.81%	2.70%	0.00%
Threaten or bully?	21.62%	37.84%	21.62%	13.51%	5.41%
Under the influence of inhalants?	91.89%	2.70%	5.41%	0.00%	0.00%
Carry weapons?	83.78%	16.22%	0.00%	0.00%	0.00%
Overall Middle Schools					
Under the influence of drugs?	78.08%	15.88%	3.80%	1.57%	0.67%
Under the influence of alcohol?	83.94%	14.03%	1.36%	0.45%	0.23%
Destroy things (vandalism)?	26.97%	41.57%	19.33%	7.87%	4.27%
Get into fights?	31.99%	38.03%	19.02%	6.49%	4.47%
Steal things?	37.75%	37.53%	16.18%	3.60%	4.94%
Threaten or bully?	14.64%	36.26%	25.68%	12.61%	10.81%
Under the influence of inhalants?	95.02%	4.07%	0.45%	0.23%	0.23%
Carry weapons?	83.75%	14.67%	0.90%	0.23%	0.45%
District					
Under the influence of drugs?	82.61%	11.54%	4.11%	1.19%	0.55%
Under the influence of alcohol?	86.69%	10.21%	2.34%	0.60%	0.16%
Destroy things (vandalism)?	38.03%	36.81%	16.05%	5.07%	4.04%
Get into fights?	35.38%	38.78%	16.46%	4.83%	4.55%
Steal things?	41.82%	37.07%	14.02%	4.28%	2.81%
Threaten or bully?	22.88%	37.15%	21.97%	8.96%	9.04%
Under the influence of inhalants?	97.27%	2.42%	0.24%	0.04%	0.04%
Carry weapons?	88.47%	10.26%	1.11%	0.08%	0.08%

Staff Survey Results of the Mean Factor Score by Ethnicity (Self-Reported)						
	AKNA/AI	AF AM	Hispanic	Asian/NH	White	Multi-Ethnic
Goldenview Middle School						
School Leadership	4.38	***	***	***	4.21	4.00
Respectful Climate	4.30	***	***	***	3.89	2.80
Staff Attitudes	4.70	***	***	***	4.31	4.60
Parent and Community Involvement	***	***	***	***	4.24	4.00
Student Involvement	2.83	***	***	***	3.48	4.00
School Safety	4.60	***	***	***	4.18	3.60
* Student Delinquency	1.40	***	***	***	1.79	3.00
* Student Drug and Alcohol Use	1.00	***	***	***	1.31	1.00
Overall Climate	***	***	***	***	4.21	3.88
Overall Middle Schools						
School Leadership	3.71	3.94	4.09	4.28	3.98	4.15
Respectful Climate	3.45	3.60	3.76	3.68	3.57	3.65
Staff Attitudes	3.88	4.03	4.20	4.18	4.13	4.24
Parent and Community Involvement	3.49	3.95	3.96	4.06	3.80	3.87
Student Involvement	3.31	3.70	4.22	4.10	3.61	3.63
School Safety	3.63	3.71	3.80	3.82	3.82	3.80
* Student Delinquency	2.11	2.67	1.60	1.92	2.03	2.03
* Student Drug and Alcohol Use	1.07	1.40	1.03	1.04	1.19	1.15
Overall Climate	3.63	3.90	4.13	4.11	3.96	4.08
District						
School Leadership	3.99	3.99	4.13	4.15	3.96	4.06
Respectful Climate	3.66	3.83	3.84	3.96	3.76	3.84
Staff Attitudes	4.06	4.11	4.27	4.22	4.16	4.29
Parent and Community Involvement	3.75	3.91	3.94	3.93	3.82	3.85
Student Involvement	3.62	3.67	3.85	3.88	3.64	3.72
School Safety	3.82	3.94	4.06	3.94	3.97	3.94
* Student Delinquency	1.88	1.90	1.67	1.61	1.91	2.05
* Student Drug and Alcohol Use	1.12	1.26	1.03	1.16	1.15	1.13
Overall Climate	3.96	4.04	4.20	4.18	4.04	4.09

*Student Drug and Alcohol Use and Student Delinquency factor scale scores differ from other factors since the higher the score is the more negative the response.

**Staff survey results do not include an 'Other' ethnicity category since staff in that category all chose at least one other ethnicity in addition to 'Other' and were included in the 'Multi-Ethnic' category as a result.

***Results can not be calculated because of missing responses

The response rate is not high enough to provide statistically reliable results for Goldenview Middle School's Parent/Guardian Survey Results.