

Government Hill Elementary School Overview

Statement of Program

About 450 students attend Government Hill Elementary School. Two programs run concurrently at our school - a dual-language Spanish Immersion Program and a Neighborhood Program. We are a Title I school. Government Hill uses international tutors to deliver services to students and give them a sense of being included in our school community. We are fortunate to have a diverse student body. Almost 50 percent of our students are Hispanic and the rest represent Russian, Alaska Native, Filipino, Samoan, Korean, Hmong and Caucasian heritages.

Our test scores have remained slightly above the district average for the past five years. Our students are assisted by a highly skilled professional staff, and committed and involved parents.

From the School Report Card

School Goals	
Goal	Level of Achievement
The number of students in grades 3-6 rated proficient on the state reading assessment will increase from 85 to 87 percent.	Partially Attained
The number of students in grades 3-6 rated proficient on the state math assessments will increase from 78 to 80 percent.	Partially Attained
Office referrals for students in grades K-6 will decrease by 20 percent.	Attained

From the School Report Card

Budget*	
2006-07 Actual Expenditures	\$2,485,940
2007-08 Revised Budgeted Amount	\$2,814,329
2008-09 Proposed Budget	\$2,829,990

*Dollars budgeted or expended are general fund only
From IFAS

Government Hill Elementary School Characteristics			
	School	District	Source of Information
Membership	432	48,858	Fall OASIS
Capacity	87.17%	N/A	2008-18 ASD Capital Improvement Plan
Attendance Rate	93.96%	92.83%	NCLB Summer Data Collection
Retention Rate K-8	0.47%	0.60%	SMS and NCLB Summer Data Collection
Transiency Rate	16.28%	26.07%	NCLB Summer Data Collection
Economically Disadvantaged	208	17,717	Fall OASIS
Average Weekly Volunteer Hours	4	4,660	Department of Education Report Card Report
Students Taking the Alternate Assessment	0	228	SMS
Change in Enrollment	-5.88%	-0.76%	Fall Oasis

Teacher Qualification				
Number of Teachers	Percent Fully Licensed	Percent With Advanced Degrees	Number Nationally Board Certified	Percent of Classes Taught by "Highly Qualified Teachers"
31	100.00%	38.70%	0	100.00%

Government Hill Elementary School Business Partnerships
Alaska Railroad; AT&T Alascom; AFD Fire Station #1; Big Brothers/Big Sisters of Alaska; Alaska Professional Sports, Alaska Wild Football Team

From the School Report Card

Ethnicity Report							
African-American/Black	Alaska Native/American Indian	Asian	Native Hawaiian/Other Pacific Islander	White	Hispanic	Multi-Ethnic	Total
21	17	13	9	105	229	38	432

From Fall Oasis

Full Academic Year		
Students Enrolled	Students Enrolled for FAY	Percent FAY
426	404	94.84%

From participation file (Grades 3-10)

Government Hill Elementary School
2007-08 Adequate Yearly Progress
Status Report

Meets AYP

AMO For Language Arts: 77.18%
AMO For Mathematics: 66.09%

Group	Participation Rate				"FAY" (D) Tested & Enrolled "FAY"	Language Arts Performance				Mathematics Performance			
	(A) Number Enrolled	(B) Number Tested	Participation Rate (%)	(C) Participation Rate Met		(E) Proficient on LA	(F) Percent Proficient on LA	(G) LA Target	(H) Met AMO for LA	(I) Proficient on Mathematics	(J) Percent Proficient in Mathematics	(K) Mathematics Target	(L) Met AMO for Mathematics
All Students	227	227	100%	Yes	213	174	81.7%	70.5%	Yes	162	76.1%	58.5%	Yes
AF AM	9	9	N/A	N/A	N/A	N/A	N/A	N/A	N/A	N/A	N/A	N/A	N/A
AKNA/AI	9	9	N/A	N/A	N/A	N/A	N/A	N/A	N/A	N/A	N/A	N/A	N/A
Asian/NH/OPI	11	11	N/A	N/A	N/A	N/A	N/A	N/A	N/A	N/A	N/A	N/A	N/A
White	63	63	100%	Yes	60	55	91.7%	64.6%	Yes	55	91.7%	51.8%	Yes
Hispanic	117	117	100%	Yes	110	92	83.6%	67.9%	Yes	79	71.8%	55.6%	Yes
ME	18	18	N/A	N/A	N/A	N/A	N/A	N/A	N/A	N/A	N/A	N/A	N/A
EDS	110	110	100%	Yes	101	69	68.3%	67.5%	Yes	64	63.4%	55.1%	Yes
SWD	21	21	100%	Yes	N/A	N/A	N/A	N/A	N/A	N/A	N/A	N/A	N/A
LEP	113	113	100%	Yes	105	85	81%	67.6%	Yes	75	71.4%	55.3%	Yes

Attendance Rate: Met

94.0% (Threshold is 85%)

N/A is used to indicate:

(1) Subgroups with 20 or fewer students enrolled on the first day of testing shall not be included in participation rate calculation.

(2) Subgroups with 25 or fewer students enrolled for the "full academic year" shall not have the performance score computed.

* For the groups where the number enrolled is less than or equal to 40, participation is met when no more than two miss the test. Groups can also meet this target using the average of the past two or three years.

** When a group achieves a "Yes" without meeting the listed target, it has done so using either the 99% confidence interval or Safe Harbor.

*** The results cannot be published without releasing personally identifiable information based upon the EED reporting protocol.

This document was prepared by the ASD Assessment and Evaluation Department.

7/10/2008

Government Hill Elementary School
2007-08 Adequate Yearly Progress
Growth Report

The AYP growth reports are generated by the Alaska State Department of Education and Early Development. The reports can be found online at: http://www.asdk12.org/depts/assess_eval/AYP/State_AS_D_AYG_0708.pdf

SBA Proficiency Comparison by Grade for Government Hill Elementary School																
	Reading Percent Proficient				Writing Percent Proficient				Mathematics Percent Proficient				Science* Percent Proficient			
	04-05	05-06	06-07	07-08	04-05	05-06	06-07	07-08	04-05	05-06	06-07	07-08	04-05	05-06	06-07	07-08
All Students	81.38%	82.05%	85.40%	83.41%	78.54%	82.55%	85.40%	77.58%	74.40%	74.90%	77.83%	74.89%	N/A	N/A	N/A	46.43%
Grade 3	89.23%	91.23%	82.54%	81.16%	83.33%	84.21%	82.54%	81.16%	80.30%	89.47%	79.69%	82.86%	N/A	N/A	N/A	N/A
Grade 4	73.77%	81.03%	89.58%	76.79%	69.49%	87.93%	95% or more	69.64%	68.33%	66.67%	86.27%	63.16%	N/A	N/A	N/A	46.43%
Grade 5	77.78%	80.65%	85.45%	93.48%	76.56%	77.42%	83.64%	86.96%	75.00%	65.08%	64.29%	83.33%	N/A	N/A	N/A	N/A
Grade 6	84.48%	75.44%	85.00%	84.62%	84.48%	81.03%	81.67%	73.08%	73.33%	79.66%	81.36%	69.23%	N/A	N/A	N/A	N/A

* 2007-08 was the first year Science was administered for grades 4, 8 and 10 on the SBA.

SBA Proficient & Not Proficient by NCLB Groups for Government Hill Elementary School								
	Reading		Writing		Mathematics		Science**	
	Percent Proficient	Percent Not Proficient	Percent Proficient	Percent Not Proficient	Percent Proficient	Percent Not Proficient	Percent Proficient	Percent Not Proficient
All Students	83.41%	16.59%	77.58%	22.42%	74.89%	25.11%	46.43%	53.57%
AF AM	75% or more	25% or fewer	66.67%	33.33%	66.67%	33.33%	*	*
AKNA/AI	66.67%	33.33%	55.56%	44.44%	75% or more	25% or fewer	*	*
Asian	60% or more	40% or fewer	57.14%	42.86%	62.50%	37.50%	*	*
NH/OPI	*	*	*	*	*	*	*	*
White	92.06%	7.94%	90.48%	9.52%	90.48%	9.52%	66.67%	33.33%
Hispanic	85.09%	14.91%	78.95%	21.05%	70.09%	29.91%	38.89%	61.11%
ME	72.22%	27.78%	61.11%	38.89%	72.22%	27.78%	*	*
EDS	72.22%	27.78%	62.96%	37.04%	62.73%	37.27%	37.93%	62.07%
Non-EDS	93.91%	6.09%	91.30%	8.70%	86.32%	13.68%	55.56%	44.44%
SWD	35.00%	65.00%	45.00%	55.00%	35.00%	65.00%	60% or fewer	40% or more
Non-SWD	88.18%	11.82%	80.79%	19.21%	78.74%	21.26%	50.00%	50.00%
LEP	61.90%	38.10%	50.00%	50.00%	47.83%	52.17%	80% or fewer	20% or more
Not LEP	88.40%	11.60%	83.98%	16.02%	81.77%	18.23%	61.90%	38.10%
Migrant	75% or more	25% or fewer	75% or more	25% or fewer	75% or more	25% or fewer	*	*
Not Migrant	82.71%	17.29%	76.64%	23.36%	74.31%	25.69%	46.43%	53.57%
Female	85.37%	14.63%	81.30%	18.70%	73.02%	26.98%	36.67%	63.33%
Male	81.00%	19.00%	73.00%	27.00%	77.23%	22.77%	57.69%	42.31%

* Results cannot be published without releasing personally identifiable information based upon the EED reporting protocol

** 2007-08 was the first year Science was administered for grades 4, 8 and 10 on the SBA.

SBA Mean Scale Score Comparison by NCLB Groups for Government Hill Elementary School								
	Reading		Writing		Mathematics		Science***	
	06-07	07-08	06-07	07-08	06-07	07-08	06-07	07-08
All Students	385.67	372.25	384.37	370.17	365.38	354.50	N/A	291.09
AF AM	373.36	351.44	361.50	361.00	359.93	335.33	N/A	*
AKNA/AI	381.40	363.67	359.73	361.11	334.27	352.00	N/A	*
Asian**	363.00	322.14	361.57	302.71	338.63	301.75	N/A	*
NH/OPI**	N/A	*	N/A	*	N/A	*	N/A	*
White	417.50	399.59	414.46	404.41	397.37	392.22	N/A	331.17
Hispanic	364.53	368.62	368.57	366.24	349.59	345.09	N/A	277.44
ME	387.23	351.44	389.19	335.39	364.45	336.11	N/A	*
EDS	358.38	345.67	348.72	340.01	338.46	334.61	N/A	277.17
Non-EDS	410.64	397.22	417.00	398.50	390.93	373.20	N/A	306.04
SWD	295.08	294.70	278.58	300.15	287.17	303.30	N/A	237.83
Non-SWD	390.75	379.89	390.30	377.07	369.69	359.44	N/A	297.48
LEP	370.60	306.67	375.60	306.55	357.46	300.85	N/A	216.21
Not LEP	399.46	387.47	392.40	384.94	372.91	368.13	N/A	316.05
Migrant	399.60	393.78	375.20	391.67	362.60	398.33	N/A	*
Not Migrant	385.35	371.35	384.58	369.27	365.44	352.69	N/A	291.09
Female	392.63	379.41	400.20	381.22	364.86	352.73	N/A	276.73
Male	378.19	363.44	367.39	356.59	365.95	356.70	N/A	307.65

* Results cannot be published without releasing personally identifiable information based upon the EED reporting protocol

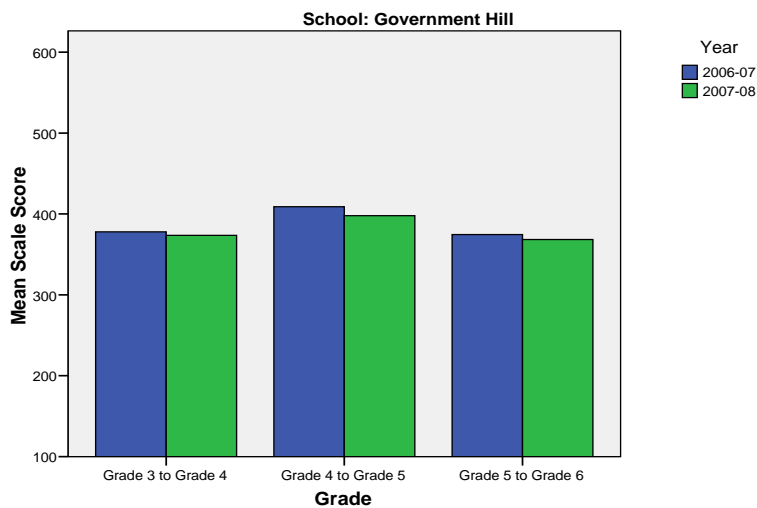
** Prior to 2007-08 the Asian category includes Native Hawaiian/Other Pacific Islander. In 2007-08 Native Hawaiian/Other Pacific Islander is a separate ethnic category.

*** 2007-08 was the first year Science was administered for grades 4, 8 and 10 on the SBA.

Government Hill Elementary School SBA Change Average Scale Score by NCLB Groups: Reading									
	Average Scale Score of Students Tested in District Both Years			Average Scale Score of Students Tested in District Both Years			Average Scale Score of Students Tested in District Both Years		
	Grade 3 in 06-07	Grade 4 in 07-08	Difference	Grade 4-in 06-07	Grade 5 in 07-08	Difference	Grade 5-in 06-07	Grade 6 in 07-08	Difference
All Students	377.77	373.52	-4.25	408.98	397.85	-11.13	374.58	368.30	-6.28
AF AM	*	*	*	*	*	*	*	*	*
AKNA/AI	*	*	*	*	*	*	*	*	*
Asian	*	*	*	*	*	*	*	*	*
NH/OPI	*	*	*	*	*	*	*	*	*
White	421.45	415.00	-6.45	439.27	418.67	-20.60	394.33	387.83	-6.50
Hispanic	362.52	367.91	5.39	395.89	385.26	-10.63	378.13	379.33	1.21
ME	*	*	*	*	*	*	375.17	347.67	-27.50
EDS	357.38	352.23	-5.15	371.93	366.80	-5.13	353.79	349.21	-4.58
Non-EDS	398.15	394.81	-3.35	431.20	416.48	-14.72	393.77	385.92	-7.85
SWD	308.83	290.33	-18.50	*	*	*	*	*	*
Non-SWD	386.76	384.37	-2.39	408.98	397.85	-11.13	378.06	371.67	-6.40
LEP	286.91	292.55	5.64	*	*	*	298.40	296.80	-1.60
Not LEP	402.15	395.24	-6.90	417.97	403.63	-14.34	383.04	376.24	-6.80
Migrant	*	*	*	*	*	*	*	*	*
Not Migrant	377.77	373.52	-4.25	407.44	395.86	-11.58	373.55	367.67	-5.88
Female	374.00	369.75	-4.25	416.69	410.23	-6.46	379.73	378.31	-1.42
Male	382.17	377.92	-4.25	394.64	374.86	-19.79	369.00	357.46	-11.54

* Results cannot be published without releasing personally identifiable information based upon the EED reporting protocol

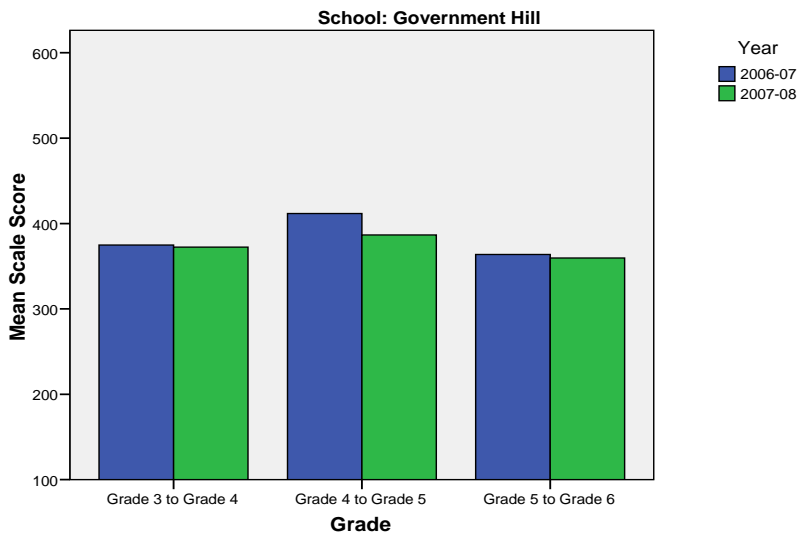
Change in Mean Scale Score in SBA Reading by Grade Between 2006-07 and 2007-08



Government Hill Elementary School SBA Change Average Scale Score by NCLB Groups: Writing									
	Average Scale Score of Students Tested in District Both Years			Average Scale Score of Students Tested in District Both Years			Average Scale Score of Students Tested in District Both Years		
	Grade 3 in 06-07	Grade 4 in 07-08	Difference	Grade 4- in 06-07	Grade 5 in 07-08	Difference	Grade 5- in 06-07	Grade 6 in 07-08	Difference
All Students	374.85	372.29	-2.56	411.65	386.53	-25.13	363.82	359.58	-4.24
AF AM	*	*	*	*	*	*	*	*	*
AKNA/AI	*	*	*	*	*	*	*	*	*
Asian	*	*	*	*	*	*	*	*	*
NH/OPI	*	*	*	*	*	*	*	*	*
White	406.36	411.82	5.45	420.27	411.00	-9.27	399.00	399.50	0.50
Hispanic	367.55	363.18	-4.36	412.21	376.37	-35.84	369.25	369.29	0.04
ME	*	*	*	*	*	*	357.67	338.00	-19.67
EDS	350.77	360.50	9.73	381.07	348.67	-32.40	335.75	329.08	-6.67
Non-EDS	398.92	384.08	-14.85	430.00	409.24	-20.76	389.73	387.73	-2.00
SWD	292.67	296.67	4.00	*	*	*	*	*	*
Non-SWD	385.57	382.15	-3.41	411.65	386.53	-25.13	366.40	362.23	-4.17
LEP	287.82	284.45	-3.36	*	*	*	295.80	285.20	-10.60
Not LEP	398.20	395.85	-2.34	418.39	391.26	-27.13	371.38	367.84	-3.53
Migrant	*	*	*	*	*	*	*	*	*
Not Migrant	374.85	372.29	-2.56	411.44	385.81	-25.64	363.39	359.35	-4.04
Female	382.82	378.36	-4.46	424.38	400.77	-23.62	376.81	371.69	-5.12
Male	365.54	365.21	-0.33	388.00	360.07	-27.93	349.75	346.46	-3.29

* Results cannot be published without releasing personally identifiable information based upon the EED reporting protocol

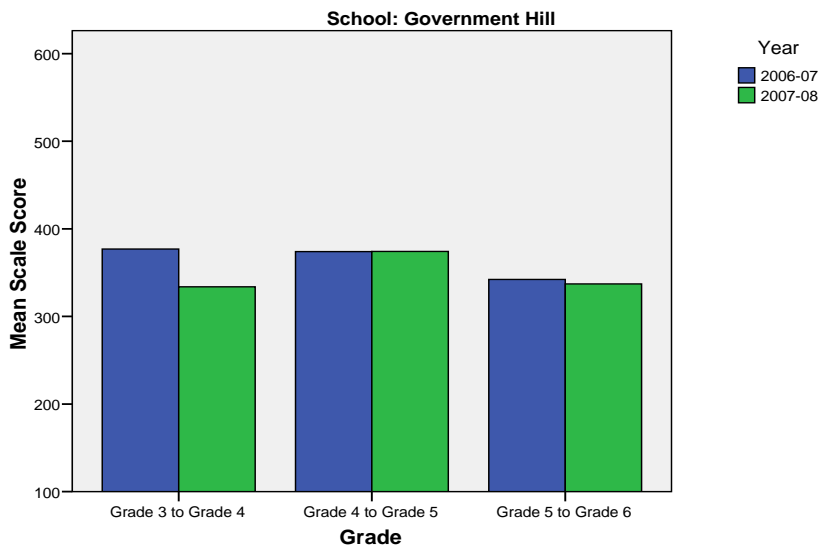
Change in Mean Scale Score in SBA Writing by Grade between 2006-07 and 2007-08



Government Hill Elementary School SBA Change Average Scale Score by NCLB Groups: Mathematics									
	Average Scale Score of Students Tested in District Both Years			Average Scale Score of Students Tested in District Both Years			Average Scale Score of Students Tested in District Both Years		
	Grade 3 in 06-07	Grade 4 in 07-08	Difference	Grade 4- in 06-07	Grade 5 in 07-08	Difference	Grade 5- in 06-07	Grade 6 in 07-08	Difference
All Students	376.92	333.89	-43.04	373.95	374.28	0.33	342.22	337.06	-5.16
AF AM	*	*	*	*	*	*	*	*	*
AKNA/AI	*	*	*	*	*	*	*	*	*
Asian	*	*	*	*	*	*	*	*	*
NH/OPI	*	*	*	*	*	*	*	*	*
White	415.27	366.91	-48.36	399.33	393.40	-5.93	376.83	381.75	4.92
Hispanic	365.71	328.35	-37.35	362.86	365.33	2.48	336.12	327.32	-8.80
ME	*	*	*	*	*	*	340.67	353.00	12.33
EDS	359.48	324.74	-34.74	348.06	351.47	3.41	328.12	325.04	-3.08
Non-EDS	395.04	343.38	-51.65	390.88	389.19	-1.69	355.77	348.62	-7.15
SWD	346.33	283.33	-63.00	*	*	*	*	*	*
Non-SWD	380.83	340.34	-40.49	373.95	374.28	0.33	345.59	340.16	-5.43
LEP	312.83	265.92	-46.92	*	*	*	273.67	277.33	3.67
Not LEP	395.68	353.78	-41.90	383.46	381.08	-2.38	351.36	345.02	-6.33
Migrant	*	*	*	*	*	*	*	*	*
Not Migrant	376.92	333.89	-43.04	375.08	375.10	0.03	340.52	335.12	-5.40
Female	370.93	331.25	-39.68	377.07	383.36	6.29	331.54	328.73	-2.81
Male	383.64	336.84	-46.80	368.13	357.33	-10.80	353.32	345.72	-7.60

* Results cannot be published without releasing personally identifiable information based upon the EED reporting protocol

Change in Mean Scale Score in SBA Mathematics by Grade between 2006-07 and 2007-08



Reading: SBA Results Compared for Government Hill Elementary School, District and State Grades 3 Through 6															
	% Advanced Proficient			% Proficient			% Below Proficient			% Far Below Proficient			% Tested		
	School	District	State	School	District	State	School	District	State	School	District	State	School	District	State
All Students	34.98%	39.70%	35.67%	48.43%	43.89%	45.50%	10.76%	11.60%	13.02%	5.83%	4.80%	5.80%	98.24%	98.15%	97.98%
AF AM	33.33%	20.73%	22.99%	44.44%	54.18%	53.49%	*	17.79%	16.46%	*	7.30%	7.06%	100.00%	98.04%	97.49%
AKNA/AI	33.33%	20.23%	14.62%	33.33%	51.11%	48.17%	*	18.54%	24.83%	*	10.11%	12.37%	100.00%	96.88%	97.59%
Asian	*	30.22%	28.26%	71.43%	48.71%	51.04%	*	15.32%	15.32%	*	5.75%	5.38%	87.50%	97.64%	97.67%
NH/OPI	*	14.67%	N/A	*	51.03%	N/A	*	24.59%	N/A	*	9.71%	N/A	100.00%	98.98%	N/A
White	47.62%	52.75%	47.28%	44.44%	38.06%	42.41%	*	6.69%	7.27%	*	2.50%	3.03%	100.00%	98.68%	98.28%
Hispanic	33.33%	32.35%	31.74%	51.75%	46.43%	48.60%	8.77%	14.67%	13.66%	6.14%	6.55%	6.00%	97.44%	97.14%	97.32%
ME	22.22%	33.26%	34.76%	50.00%	48.25%	47.75%	*	13.47%	12.80%	*	5.01%	4.70%	100.00%	98.15%	98.03%
EDS	21.30%	22.85%	21.47%	50.93%	49.71%	48.65%	18.52%	19.04%	20.31%	9.26%	8.40%	9.57%	98.18%	97.50%	96.44%
Not EDS	47.83%	51.44%	46.31%	46.09%	39.84%	43.15%	3.48%	6.42%	7.56%	2.61%	2.30%	2.98%	98.29%	98.61%	99.16%
SWD	*	10.08%	9.29%	*	37.10%	37.96%	30.00%	32.15%	31.20%	35.00%	20.67%	21.55%	100.00%	94.28%	93.60%
Non-SWD	37.93%	45.02%	40.09%	50.25%	45.12%	46.77%	8.87%	7.91%	9.98%	2.96%	1.95%	3.17%	98.07%	98.88%	98.75%
LEP	*	4.97%	3.12%	*	39.93%	38.06%	21.43%	37.14%	38.40%	16.67%	17.96%	20.42%	91.30%	94.25%	96.11%
Not LEP	42.54%	42.78%	39.95%	45.86%	44.25%	46.48%	8.29%	9.33%	9.68%	3.31%	3.64%	3.88%	100.00%	98.51%	98.23%
Migrant	55.56%	27.01%	17.29%	44.44%	50.34%	48.58%	*	16.44%	23.78%	*	6.21%	10.35%	100.00%	98.35%	98.50%
Not Migrant	34.11%	40.26%	36.97%	48.60%	43.61%	45.29%	11.21%	11.38%	12.26%	6.07%	4.74%	5.48%	98.17%	98.14%	97.94%
Female	35.77%	44.40%	39.45%	49.59%	43.41%	45.33%	9.76%	8.75%	10.85%	4.88%	3.44%	4.37%	97.62%	98.39%	98.31%
Male	34.00%	35.15%	32.09%	47.00%	44.37%	45.67%	12.00%	14.36%	15.08%	7.00%	6.13%	7.16%	99.01%	97.92%	97.66%

* Results cannot be published without releasing personally identifiable information based upon the EED reporting protocol

Writing: SBA Results Compared for Government Hill Elementary School, District and State Grades 3 Through 6															
	% Advanced Proficient			% Proficient			% Below Proficient			% Far Below Proficient			% Tested		
	School	District	State	School	District	State	School	District	State	School	District	State	School	District	State
All Students	30.49%	34.87%	30.49%	47.09%	44.25%	44.50%	20.63%	18.78%	22.32%	1.79%	2.10%	2.69%	98.24%	98.11%	97.96%
AF AM	33.33%	20.71%	20.51%	33.33%	46.71%	48.68%	*	28.71%	27.18%	*	3.88%	3.63%	100.00%	98.15%	97.71%
AKNA/AI	33.33%	17.15%	12.11%	*	45.31%	41.05%	44.44%	33.38%	40.69%	*	4.15%	6.15%	100.00%	96.51%	97.64%
Asian	*	30.17%	28.49%	57.14%	45.92%	45.93%	*	21.33%	23.31%	*	2.58%	2.27%	87.50%	97.56%	97.67%
NH/OPI	*	14.02%	N/A	*	42.89%	N/A	*	39.38%	N/A	*	3.71%	N/A	100.00%	99.18%	N/A
White	44.44%	45.85%	40.04%	46.03%	41.91%	44.71%	*	11.26%	13.97%	*	0.99%	1.28%	100.00%	98.66%	98.22%
Hispanic	28.07%	27.33%	27.00%	50.88%	47.25%	48.36%	*	22.54%	22.23%	*	2.88%	2.41%	97.44%	97.07%	97.36%
ME	*	28.51%	29.14%	50.00%	47.68%	47.29%	38.89%	21.31%	21.37%	*	2.51%	2.20%	100.00%	98.15%	97.96%
EDS	16.67%	18.92%	17.53%	46.30%	47.34%	45.15%	34.26%	29.95%	32.95%	2.78%	3.79%	4.37%	98.18%	97.50%	96.53%
Not EDS	43.48%	45.99%	40.21%	47.83%	42.10%	44.01%	*	10.99%	14.35%	*	0.92%	1.44%	98.29%	98.54%	99.06%
SWD	*	7.09%	6.94%	40.00%	38.82%	37.02%	55.00%	45.96%	47.34%	*	8.12%	8.69%	100.00%	94.28%	93.97%
Non-SWD	33.00%	39.86%	34.45%	47.78%	45.23%	45.76%	17.24%	13.89%	18.11%	1.97%	1.02%	1.69%	98.07%	98.83%	98.66%
LEP	*	4.71%	3.14%	47.62%	37.05%	30.66%	47.62%	50.57%	56.76%	*	7.67%	9.44%	91.30%	94.25%	96.18%
Not LEP	37.02%	37.55%	34.08%	46.96%	44.89%	46.32%	14.36%	15.96%	17.79%	1.66%	1.60%	1.81%	100.00%	98.47%	98.20%
Migrant	33.33%	21.44%	14.20%	66.67%	48.58%	42.55%	*	26.63%	38.57%	*	3.35%	4.68%	100.00%	98.51%	98.58%
Not Migrant	30.37%	35.46%	31.63%	46.26%	44.06%	44.64%	21.50%	18.43%	21.18%	1.87%	2.04%	2.55%	98.17%	98.09%	97.92%
Female	33.33%	42.63%	37.48%	47.97%	42.50%	43.42%	*	13.62%	17.40%	*	1.26%	1.70%	97.62%	98.32%	98.22%
Male	27.00%	27.36%	23.87%	46.00%	45.96%	45.52%	*	23.78%	26.98%	*	2.91%	3.63%	99.01%	97.90%	97.72%

* Results cannot be published without releasing personally identifiable information based upon the EED reporting protocol

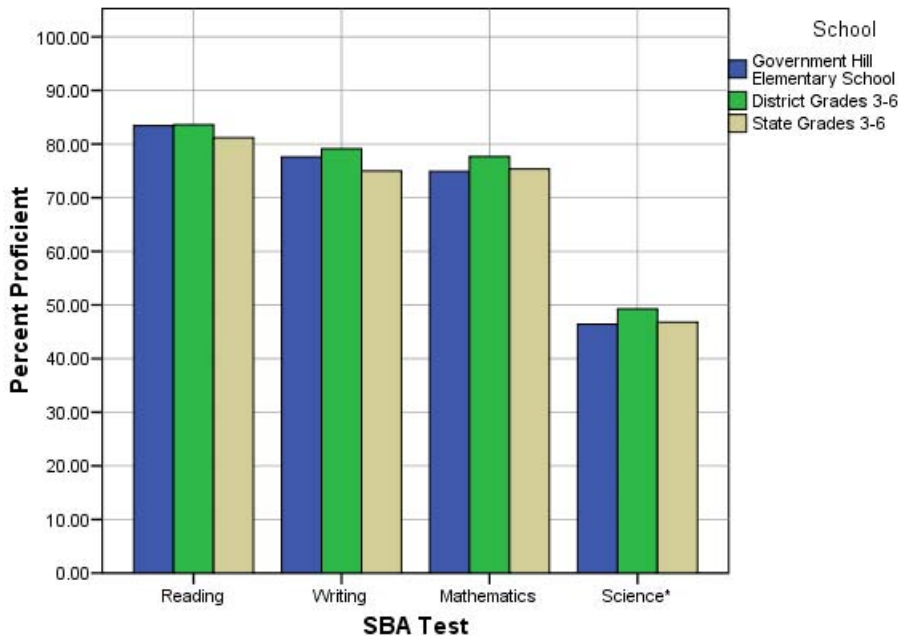
Mathematics: SBA Results Compared for Government Hill Elementary School, District and State Grades 3 Through 6															
	% Advanced Proficient			% Proficient			% Below Proficient			% Far Below Proficient			% Tested		
	School	District	State	School	District	State	School	District	State	School	District	State	School	District	State
All Students	33.92%	39.81%	36.08%	40.97%	37.84%	39.26%	14.54%	12.46%	13.78%	10.57%	9.88%	10.88%	100.00%	98.52%	98.12%
AF AM	33.33%	19.48%	22.09%	33.33%	40.14%	41.60%	*	20.19%	18.61%	*	20.19%	17.70%	100.00%	98.38%	97.78%
AKNA/AI	44.44%	23.20%	18.26%	33.33%	39.51%	39.14%	*	19.22%	21.79%	*	18.07%	20.81%	100.00%	96.96%	97.72%
Asian	*	37.02%	34.29%	62.50%	41.20%	41.23%	*	13.76%	14.10%	*	8.03%	10.38%	100.00%	99.27%	98.99%
NH/OPI	*	18.52%	N/A	*	38.07%	N/A	*	20.16%	N/A	*	23.25%	N/A	100.00%	99.39%	N/A
White	50.79%	51.12%	45.75%	39.68%	35.15%	38.35%	*	8.41%	9.81%	*	5.32%	6.09%	100.00%	98.69%	98.17%
Hispanic	29.91%	31.85%	31.11%	40.17%	40.04%	42.19%	18.80%	15.02%	15.10%	11.11%	13.09%	11.60%	100.00%	98.66%	98.47%
ME	16.67%	33.75%	35.45%	55.56%	41.21%	40.61%	*	13.93%	13.30%	*	11.11%	10.64%	100.00%	98.26%	98.00%
EDS	26.36%	24.26%	23.31%	36.36%	41.50%	40.98%	21.82%	17.54%	18.60%	15.45%	16.70%	17.11%	100.00%	98.14%	96.77%
Not EDS	41.03%	50.70%	45.67%	45.30%	35.28%	37.96%	7.69%	8.91%	10.16%	5.98%	5.12%	6.21%	100.00%	98.79%	99.16%
SWD	20.00%	12.52%	12.06%	15.00%	31.53%	32.14%	35.00%	23.68%	23.60%	30.00%	32.27%	32.20%	100.00%	94.19%	93.99%
Non-SWD	35.27%	44.69%	40.12%	43.48%	38.97%	40.45%	12.56%	10.46%	12.13%	8.70%	5.88%	7.30%	100.00%	99.34%	98.85%
LEP	6.52%	8.22%	6.05%	41.30%	36.74%	34.10%	26.09%	24.50%	27.43%	26.09%	30.54%	32.42%	100.00%	97.95%	97.56%
Not LEP	40.88%	42.73%	40.09%	40.88%	37.94%	39.95%	11.60%	11.35%	11.96%	6.63%	7.98%	8.01%	100.00%	98.57%	98.19%
Migrant	66.67%	30.94%	22.37%	*	43.65%	40.27%	*	14.21%	20.36%	*	11.20%	17.00%	100.00%	98.68%	98.54%
Not Migrant	32.57%	40.21%	37.05%	41.74%	37.58%	39.19%	14.68%	12.38%	13.31%	11.01%	9.83%	10.45%	100.00%	98.51%	98.09%
Female	33.33%	41.01%	36.83%	39.68%	38.32%	39.88%	16.67%	11.59%	13.34%	10.32%	9.09%	9.96%	100.00%	98.71%	98.31%
Male	34.65%	38.66%	35.38%	42.57%	37.38%	38.67%	11.88%	13.30%	14.20%	10.89%	10.66%	11.75%	100.00%	98.34%	97.94%

* Results cannot be published without releasing personally identifiable information based upon the EED reporting protocol

Science: SBA Results Compared for Government Hill Elementary School, District and State Grade 4															
	% Advanced Proficient			% Proficient			% Below Proficient			% Far Below Proficient			% Tested		
	School	District	State	School	District	State	School	District	State	School	District	State	School	District	State
All Students	16.07%	23.68%	22.1%	30.36%	25.57%	24.7%	28.57%	31.70%	31.3%	25.00%	19.06%	21.9%	98.25%	97.81%	95.35%
AF AM	*	9.18%	8.9%	*	18.84%	23.3%	*	39.13%	38.0%	*	32.85%	29.8%	100.00%	98.57%	94.49%
AKNA/AI	*	6.54%	6.8%	*	21.50%	14.2%	*	42.99%	35.2%	*	28.97%	43.8%	100.00%	96.40%	94.98%
Asian	*	10.18%	13.4%	*	21.40%	19.4%	*	39.30%	37.5%	*	29.12%	29.7%	N/A	98.28%	97.39%
NH/OPI	*	6.57%	N/A	*	8.03%	N/A	*	34.31%	N/A	*	51.09%	N/A	100.00%	98.56%	N/A
White	33.33%	36.40%	32.3%	33.33%	29.08%	29.9%	*	25.33%	27.3%	*	9.19%	10.5%	100.00%	97.87%	94.97%
Hispanic	8.33%	16.17%	18.2%	30.56%	26.15%	26.0%	33.33%	32.08%	33.9%	27.78%	25.61%	21.9%	97.30%	97.12%	96.39%
ME	*	16.06%	18.5%	*	26.12%	26.8%	*	37.47%	35.9%	*	20.34%	18.7%	100.00%	98.32%	96.90%
EDS	13.79%	8.34%	11.0%	24.14%	22.44%	20.1%	24.14%	38.10%	34.7%	37.93%	31.12%	34.2%	100.00%	97.73%	94.99%
Not EDS	18.52%	35.00%	31.2%	37.04%	27.88%	28.5%	33.33%	26.97%	28.5%	11.11%	10.15%	11.9%	96.43%	97.87%	95.64%
SWD	*	8.38%	7.7%	*	16.38%	15.2%	*	36.57%	36.6%	83.33%	38.67%	40.5%	100.00%	93.25%	91.70%
Non-SWD	16.00%	26.43%	24.7%	34.00%	27.22%	26.4%	32.00%	30.82%	30.4%	18.00%	15.53%	18.5%	98.04%	98.68%	96.04%
LEP	*	2.00%	1.5%	*	5.14%	3.8%	28.57%	34.00%	28.3%	71.43%	58.86%	66.5%	93.33%	96.15%	95.67%
Not LEP	21.43%	26.13%	25.2%	40.48%	27.88%	27.9%	28.57%	31.44%	31.8%	9.52%	14.55%	15.1%	100.00%	98.00%	95.30%
Migrant	*	9.70%	9.0%	*	26.87%	15.3%	*	39.55%	34.3%	*	23.88%	41.4%	N/A	97.10%	97.32%
Not Migrant	16.07%	24.24%	23.0%	30.36%	25.51%	25.3%	28.57%	31.38%	31.1%	25.00%	18.86%	20.5%	98.25%	97.84%	95.21%
Female	10.00%	22.73%	20.8%	26.67%	25.78%	25.2%	36.67%	33.63%	32.6%	26.67%	17.87%	21.4%	96.77%	98.05%	95.43%
Male	23.08%	24.61%	23.4%	34.62%	25.36%	24.2%	19.23%	29.80%	30.1%	23.08%	20.23%	22.3%	100.00%	97.58%	95.27%

* Results cannot be published without releasing personally identifiable information based upon the EED reporting protocol

2007-08 SBA Results Compared for Government Hill Elementary School, District and State

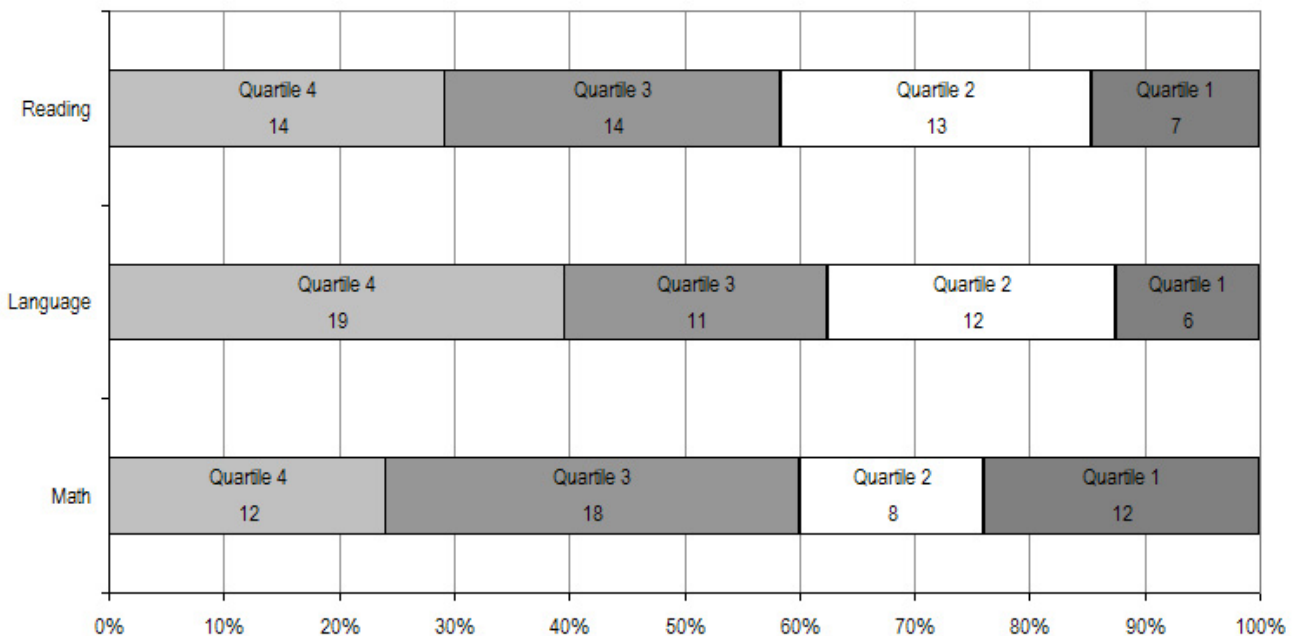


* 2007-08 was the first year Science was administered for grades 4, 8 and 10 on the SBA.

Government Hill Elementary School TerraNova Grade 5 Percent in Each Quartile								
Reading	Above Average		Average				Below Average	
	4th Quartile (76-99 percentile)		3rd Quartile (51-75 percentile)		2nd Quartile (26-50 percentile)		1st Quartile (1-25 percentile)	
	School	District	School	District	School	District	School	District
07-08	29.17%	25.65%	29.17%	24.08%	27.08%	23.73%	14.58%	26.55%
06-07	17.0%	33.1%	30.2%	26.1%	37.7%	23.6%	15.1%	17.2%
05-06	21.7%	30.4%	26.7%	26.8%	25.0%	24.5%	26.7%	18.3%
04-05	25.8%	29.2%	27.3%	27.6%	28.8%	24.5%	18.2%	18.7%
03-04	20.0%	30.6%	26.7%	26.9%	35.0%	24.2%	18.3%	18.3%
Language								
07-08	39.58%	26.79%	22.92%	27.20%	25.00%	24.12%	12.50%	21.89%
06-07	20.8%	34.7%	28.3%	26.9%	39.6%	21.4%	11.3%	17.0%
05-06	26.7%	34.0%	23.3%	26.5%	33.3%	22.0%	16.7%	17.5%
04-05	28.8%	32.1%	24.2%	28.3%	25.8%	21.2%	21.2%	18.4%
03-04	25.0%	34.1%	25.0%	26.5%	30.0%	21.7%	20.0%	17.7%
Mathematics								
07-08	24.00%	25.45%	36.00%	26.40%	16.00%	24.47%	24.00%	23.68%
06-07	20.0%	29.7%	34.5%	31.6%	20.0%	21.2%	25.5%	17.4%
05-06	26.2%	28.4%	26.2%	31.9%	21.3%	22.3%	26.2%	17.5%
04-05	30.3%	26.9%	31.8%	31.1%	21.2%	22.9%	16.7%	19.1%
03-04	21.7%	28.3%	28.3%	29.3%	26.7%	22.6%	23.3%	19.8%

The double bold line indicates a change from the TerraNova 2nd edition to the TerraNova 3rd edition.

2007-08 TerraNova 3rd Edition Grade 5 Percent and Count of Students in Each Quartile For Government Hill Elementary School



Climate Survey Results for Government Hill Elementary School

The Anchorage School District administered the School Climate and Connectedness Surveys in spring 2008 to students in grades 5-12, all school staff and parents/guardians of students in grades K-12. The surveys were done to provide schools with information about perceptions and experiences related to school climate for use in setting school goals and redirecting resources. In the spring of 2008 grades 3 and 4 students were involved in a pilot survey for measuring school climate and connectedness. The results are currently under review by the American Institutes for Research.

Respondents were asked to answer a series of questions that were related to a certain concept. For each item, there were five options from which to choose a response. The answer options ranged from strongly disagree (1) to strongly agree (5).

Student Survey Response Rate – Grades 5-12			
	Government Hill Elementary School	Overall Elementary Schools	District**
# Surveys Completed	70	5,579	21,629
# Reportable Surveys	64	4,969	18,654
# Students Enrolled*	101	6,331	28,945
Reportable Response Rate	63.37%	78.49%	64.45%

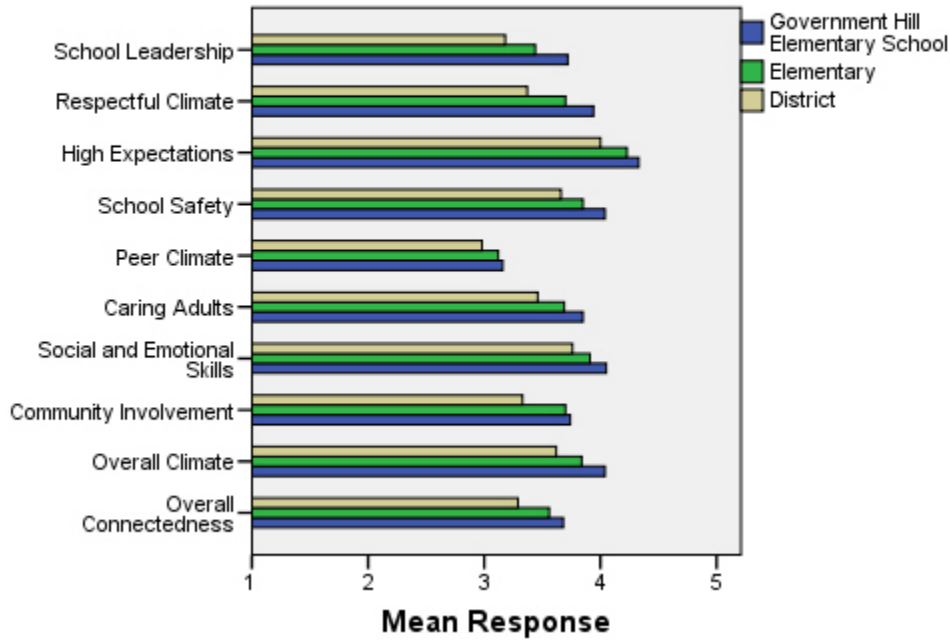
*Number enrolled as of April 1, 2008

**District data does not include KCC responses

Each question in the survey related to a factor or concept, and a score was calculated based on the mean response for the questions related to each factor. The factors measured in the survey were:

- **School Leadership and Student Involvement:** This factor reflects students' feelings about the decision making of school leaders as well as student participation in the school governance. Students selected responses between 1 and 5 where 1 indicates a low level of school leadership and student involvement and 5 indicates a high level of school leadership and student involvement.
- **Respectful Climate:** This factor reflects students' feelings about fairness of rules and respect for students' contributions. Students selected responses between 1 and 5 where 1 indicates a lack of a respectful climate and 5 indicates a highly respectful climate for students.
- **High Expectations:** This factor reflects students' feelings about their own expectations as well as those of adults in their school and community. Students selected responses between 1 and 5 where 1 indicates a lack of high expectations and 5 indicates a high level of high expectations.
- **School Safety:** This factor reflects students' feelings about bullies and gangs at school as well as general crime and violence in the community. Students selected responses between 1 and 5 where 1 indicates a low level of school safety and 5 indicates a high level of school safety.
- **Peer Climate:** This factor reflects students' feelings about how respectful students are to one another and how helpful students are to other students. Students selected responses between 1 and 5 where 1 indicates a more negative peer climate and 5 indicates a very positive peer climate at the school.
- **Caring Adults:** This factor reflects students' feelings about how close they feel to adults in the school. Students selected responses between 1 and 5 where 1 indicates a lack of caring adult relationships and 5 indicates strong caring adult relationships at the school.
- **Social and Emotional Learning:** This factor reflects students' ability to think about the consequences of their actions and to empathize with others. Students selected responses between 1 and 5 where 1 indicates that students at the school perceive themselves as having poorer social and emotional learning, and 5 indicates higher levels of social and emotional learning.
- **Community Involvement:** This factor reflects students' feelings about how supportive and welcoming the school is with parents and the community. Students selected responses between 1 and 5 where 1 indicates a less supportive and welcoming environment and 5 indicates a more supportive and welcoming environment.
- **Overall Climate:** The overall climate score was computed as the mean of three scales: school leadership, high expectations and school safety.
- **Overall Connectedness:** Overall connectedness score was computed as a mean of four scales: respectful climate, peer climate, caring adults and community involvement.

Climate and Connectedness Student Survey - Government Hill



Student Survey Mean Response by Factors Related to School Climate - Overall District			
	Government Hill Elementary School	Overall Elementary Schools	District
School Leadership	3.72	3.44	3.18
Respectful Climate	3.94	3.70	3.37
High Expectations	4.33	4.23	4.00
School Safety	4.04	3.85	3.66
Peer Climate	3.16	3.12	2.98
Caring Adults	3.85	3.69	3.46
Social and Emotional Skills	4.05	3.91	3.76
Community Involvement	3.74	3.70	3.33
Overall Climate	4.04	3.84	3.62
Overall Connectedness	3.68	3.56	3.29

Range is from a low of 1 to a high of 5

Students were also asked to answer questions related to school danger. The following table provides the responses for those questions:

Student Survey Results of the School Danger Questions - Percent of Students Responding in Each Category					
	0 Times	1-2 Times	3-6 Times	7-12 Times	> 12 Times
Government Hill Elementary School					
Under the influence of drugs?	95.31%	3.13%	1.56%	0.00%	0.00%
Under the influence of alcohol?	90.63%	9.38%	0.00%	0.00%	0.00%
Destroy things (vandalism)?	46.88%	34.38%	9.38%	3.13%	6.25%
Get into fights?	17.19%	42.19%	23.44%	10.94%	6.25%
Steal things?	50.00%	21.88%	15.63%	4.69%	7.81%
Threaten or bully?	32.81%	21.88%	23.44%	7.81%	14.06%
Under the influence of inhalants?	73.77%	22.95%	1.64%	1.64%	0.00%
Carry weapons?	93.75%	6.25%	0.00%	0.00%	0.00%
Overall Elementary Schools					
Under the influence of drugs?	91.87%	5.65%	1.22%	0.31%	0.96%
Under the influence of alcohol?	91.42%	6.01%	1.16%	0.51%	0.90%
Destroy things (vandalism)?	46.82%	32.08%	12.45%	3.30%	5.36%
Get into fights?	22.32%	35.75%	22.56%	7.96%	11.41%
Steal things?	49.79%	27.92%	12.01%	4.33%	5.95%
Threaten or bully?	32.34%	28.83%	17.08%	7.78%	13.97%
Under the influence of inhalants?	71.03%	17.07%	6.14%	2.63%	3.12%
Carry weapons?	79.22%	15.35%	3.17%	0.59%	1.68%
District					
Under the influence of drugs?	60.45%	15.05%	9.54%	3.92%	11.04%
Under the influence of alcohol?	63.11%	16.37%	8.90%	4.43%	7.19%
Destroy things (vandalism)?	41.26%	29.47%	15.45%	5.88%	7.94%
Get into fights?	26.40%	35.20%	21.96%	7.11%	9.33%
Steal things?	44.80%	25.68%	13.81%	6.98%	8.74%
Threaten or bully?	32.21%	26.21%	16.68%	9.27%	15.63%
Under the influence of inhalants?	72.79%	14.21%	5.66%	2.48%	4.87%
Carry weapons?	69.45%	19.15%	5.34%	2.01%	4.06%

Student Survey Results of the Mean Factor Score by Ethnicity (Self-Reported)							
	AKNA/AI	AF AM	Hispanic	Asian/NH	White	Other	Multi-Ethnic
Government Hill Elementary School							
School Leadership	3.60	3.00	3.86	***	3.61	3.49	3.80
Respectful Climate	4.33	3.67	3.77	***	4.13	3.98	4.08
High Expectations	4.29	***	4.28	***	4.35	4.29	4.54
School Safety	3.20	4.20	3.87	***	4.40	3.98	3.95
Peer Climate	3.00	3.40	3.10	***	3.31	2.93	3.25
Caring Adults	3.80	3.20	3.81	***	3.79	3.87	4.25
Social and Emotional Skills	4.07	3.53	4.05	***	4.06	3.91	4.38
Community Involvement	3.86	3.14	3.94	***	3.61	3.29	3.79
Overall Climate	3.70	***	3.99	***	4.12	3.97	4.10
Overall Connectedness	3.75	3.35	3.62	***	3.74	3.57	3.84
Overall Elementary Schools							
School Leadership	3.56	3.50	3.52	3.55	3.37	3.44	3.42
Respectful Climate	3.75	3.60	3.66	3.72	3.71	3.69	3.63
High Expectations	4.12	4.23	4.23	4.22	4.26	4.19	4.25
School Safety	3.75	3.63	3.73	3.68	4.03	3.66	3.79
Peer Climate	3.12	2.94	3.12	3.18	3.16	3.05	3.05
Caring Adults	3.64	3.73	3.64	3.59	3.74	3.60	3.76
Social and Emotional Skills	3.86	3.84	3.91	3.95	3.93	3.90	3.89
Community Involvement	3.66	3.60	3.67	3.66	3.75	3.66	3.70
Overall Climate	3.81	3.79	3.84	3.81	3.89	3.76	3.82
Overall Connectedness	3.56	3.49	3.51	3.53	3.60	3.49	3.56
District							
School Leadership	3.33	3.14	3.19	3.28	3.14	3.17	3.15
Respectful Climate	3.48	3.18	3.32	3.39	3.39	3.37	3.33
High Expectations	3.98	3.94	3.96	4.02	4.02	4.00	4.01
School Safety	3.60	3.48	3.55	3.47	3.78	3.51	3.62
Peer Climate	3.01	2.85	2.94	3.05	3.00	2.92	2.93
Caring Adults	3.49	3.43	3.37	3.33	3.51	3.42	3.46
Social and Emotional Skills	3.73	3.66	3.73	3.81	3.78	3.75	3.74
Community Involvement	3.37	3.22	3.31	3.29	3.34	3.34	3.31
Overall Climate	3.64	3.52	3.57	3.59	3.65	3.56	3.60
Overall Connectedness	3.33	3.17	3.24	3.26	3.31	3.26	3.27

***Results can not be calculated because of missing responses

Staff Survey Response Rate			
	Government Hill Elementary School	Overall Elementary Schools	District**
# Surveys Completed	34	1,634	2,980
# Reportable Surveys	34	1,628	2,968
# Staff Members*	52	2,967	5,549
Reportable Response Rate	65.38%	54.87%	53.49%

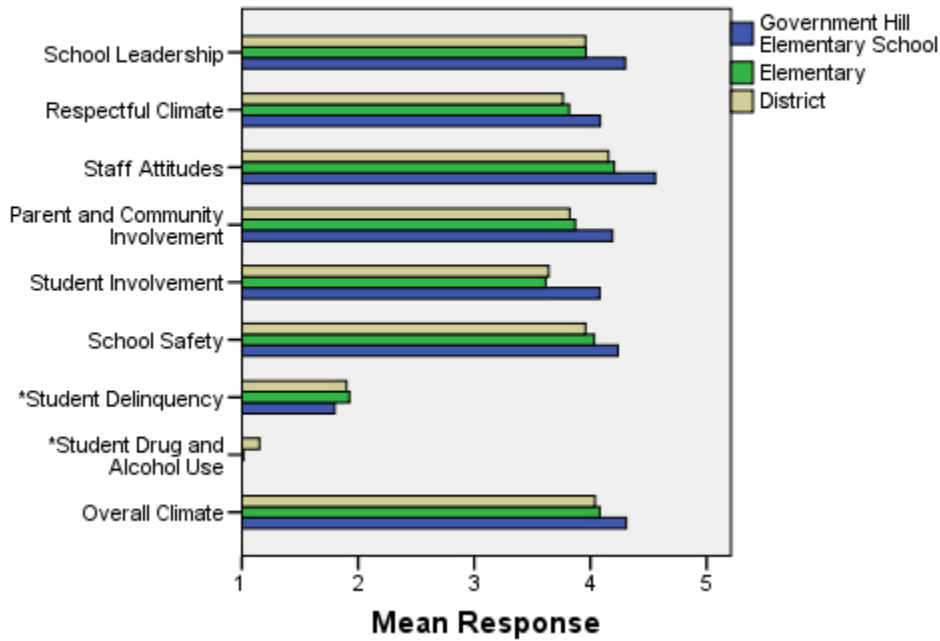
*Number staff as of April 1, 2008

**Includes KCC responses

Each question in the survey related to a factor or concept, and a score was calculated based on the mean response for the questions related to each factor. The factors were:

- **School Leadership:** This factor reflects staff members' feelings about the decision making of school leaders as well as the fairness of school rules. Staff members selected responses between 1 and 5 where 1 indicates a low level of school leadership and 5 indicates a high level of school leadership.
- **Respectful Climate:** This factor reflects staff members' feelings about how students treat each other and how well students and staff members treat one another. Staff members selected responses between 1 and 5 where 1 indicates a low level of respect and 5 indicates a high level.
- **Staff Attitudes:** This scale reflects staff members' feelings about the competence of teachers as well as how positive their attitudes are towards their jobs. Staff members selected responses between 1 and 5 where 1 indicates more negative staff attitudes and 5 indicates highly positive staff attitudes.
- **Parent and Community Involvement:** This factor reflects staff members' feelings about how accessible the school is for parents as well as how connected adults in the community are to the school. Staff members selected responses between 1 and 5 where 1 indicates a low level of parent and community involvement and 5 indicates a high level of parent and community involvement.
- **Student Involvement:** This factor reflects staff members' feeling about how involved students are in the decision making process. Staff members selected responses between 1 and 5 where 1 indicates a low level of student involvement and 5 indicates a high level of student involvement.
- **School Safety:** This factor reflects staff members' feelings about the impact of gangs and bullies as well as general crime and violence in the community. Staff members selected responses between 1 and 5 where 1 indicates a low level school safety and 5 indicates a high level of school safety.
- **Student Delinquency:** This factor uses staff members' reports of observing students getting into fights, stealing and bullying. The student delinquency and student drug and alcohol use scales differ from the other factors since the higher the score is the more negative the response. Staff members selected responses between 1 and 5 where 1 indicates a low level of student delinquency and 5 indicates a high level of student delinquency.
- **Student Drug and Alcohol Use:** This factor uses staff members' reports of observing students under the influence of drugs or alcohol. The student delinquency and student drug and alcohol use scales differ from the other factors since the higher the score is the more negative the response. Staff members selected responses between 1 and 5 where 1 indicates a low level of student drug and alcohol use and 5 indicates a high level of student drug and alcohol use.
- **Overall Climate:** Computed as the mean of 8 scales: school leadership, respectful climate, staff attitudes, parent and community involvement, student involvement, school safety, student delinquency, and drug and alcohol use scores.

Climate and Connectedness Staff Survey - Government Hill



Staff Survey Mean Response by Factors Related to School Climate - Overall District			
	Government Hill Elementary School	Overall Elementary Schools	District
School Leadership	4.30	3.96	3.96
Respectful Climate	4.09	3.82	3.76
Staff Attitudes	4.56	4.21	4.16
Parent & Community Involvement	4.19	3.87	3.82
Student Involvement	4.08	3.61	3.64
School Safety	4.24	4.03	3.96
Student Delinquency*	1.80	1.93	1.90
Student Drug & Alcohol Use*	1.00	1.01	1.15
Overall Climate	4.31	4.08	4.04

Range is from a low of 1 to a high of 5

*Student Drug and Alcohol Use and Student Delinquency factor scale scores differ from other factors since the higher the score is the more negative the response.

Staff members were also asked to answer questions related to school danger. The following table provides the responses for those questions:

Staff Survey Results of the School Danger Questions - Percent of Staff Responding in Each Category					
	0 Times	1-2 Times	3-6 Times	7-12 Times	> 12 Times
Government Hill Elementary School					
Under the influence of drugs?	100.00%	0.00%	0.00%	0.00%	0.00%
Under the influence of alcohol?	100.00%	0.00%	0.00%	0.00%	0.00%
Destroy things (vandalism)?	44.83%	48.28%	6.90%	0.00%	0.00%
Get into fights?	24.14%	51.72%	20.69%	0.00%	3.45%
Steal things?	25.00%	67.86%	7.14%	0.00%	0.00%
Threaten or bully?	10.34%	51.72%	27.59%	6.90%	3.45%
Under the influence of inhalants?	100.00%	0.00%	0.00%	0.00%	0.00%
Carry weapons?	86.21%	13.79%	0.00%	0.00%	0.00%
Overall Elementary Schools					
Under the influence of drugs?	98.39%	1.47%	0.15%	0.00%	0.00%
Under the influence of alcohol?	98.97%	0.96%	0.07%	0.00%	0.00%
Destroy things (vandalism)?	40.04%	37.02%	16.00%	4.13%	2.80%
Get into fights?	32.16%	38.18%	19.24%	5.58%	4.85%
Steal things?	38.65%	40.63%	13.96%	4.56%	2.20%
Threaten or bully?	20.00%	36.03%	23.38%	10.59%	10.00%
Under the influence of inhalants?	98.90%	0.95%	0.15%	0.00%	0.00%
Carry weapons?	89.94%	8.96%	1.03%	0.07%	0.00%
District					
Under the influence of drugs?	82.61%	11.54%	4.11%	1.19%	0.55%
Under the influence of alcohol?	86.69%	10.21%	2.34%	0.60%	0.16%
Destroy things (vandalism)?	38.03%	36.81%	16.05%	5.07%	4.04%
Get into fights?	35.38%	38.78%	16.46%	4.83%	4.55%
Steal things?	41.82%	37.07%	14.02%	4.28%	2.81%
Threaten or bully?	22.88%	37.15%	21.97%	8.96%	9.04%
Under the influence of inhalants?	97.27%	2.42%	0.24%	0.04%	0.04%
Carry weapons?	88.47%	10.26%	1.11%	0.08%	0.08%

Staff Survey Results of the Mean Factor Score by Ethnicity (Self-Reported)						
	AKNA/AI	AF AM/Black	Hispanic	Asian/NH	White	Multi-Ethnic
Government Hill Elementary School						
School Leadership	***	5.00	4.29	4.88	4.22	4.50
Respectful Climate	***	4.80	4.20	5.00	3.96	4.00
Staff Attitudes	***	5.00	4.63	5.00	4.51	4.20
Parent and Community Involvement	***	4.71	4.29	4.86	4.12	3.71
Student Involvement	***	4.33	4.05	4.67	4.05	4.00
School Safety	***	4.40	4.46	4.80	4.08	4.60
* Student Delinquency	***	2.20	1.74	1.60	1.83	1.40
* Student Drug and Alcohol Use	***	1.00	1.00	1.00	1.00	1.00
Overall Climate	***	4.63	4.42	4.82	4.19	4.33
Overall Elementary Schools						
School Leadership	4.10	4.13	4.11	4.17	3.96	4.06
Respectful Climate	3.74	3.99	3.87	4.06	3.81	3.88
Staff Attitudes	4.15	4.23	4.30	4.24	4.21	4.31
Parent and Community Involvement	3.86	4.06	3.97	3.99	3.87	3.91
Student Involvement	3.78	3.66	3.73	3.81	3.61	3.71
School Safety	3.92	4.10	4.16	3.93	4.04	4.05
* Student Delinquency	1.79	1.61	1.65	1.54	1.97	2.13
* Student Drug and Alcohol Use	1.00	1.00	1.01	1.03	1.01	1.01
Overall Climate	4.08	4.18	4.23	4.24	4.07	4.13
District						
School Leadership	3.99	3.99	4.13	4.15	3.96	4.06
Respectful Climate	3.66	3.83	3.84	3.96	3.76	3.84
Staff Attitudes	4.06	4.11	4.27	4.22	4.16	4.29
Parent and Community Involvement	3.75	3.91	3.94	3.93	3.82	3.85
Student Involvement	3.62	3.67	3.85	3.88	3.64	3.72
School Safety	3.82	3.94	4.06	3.94	3.97	3.94
* Student Delinquency	1.88	1.90	1.67	1.61	1.91	2.05
* Student Drug and Alcohol Use	1.12	1.26	1.03	1.16	1.15	1.13
Overall Climate	3.96	4.04	4.20	4.18	4.04	4.09

*Student Drug and Alcohol Use and Student Delinquency factor scale scores differ from other factors since the higher the score is the more negative the response.

**Staff survey results do not include an 'Other' ethnicity category since staff in that category all chose at least one other ethnicity in addition to 'Other' and were included in the 'Multi-Ethnic' category as a result.

***Results can not be calculated because of missing responses

The response rate is not high enough to provide statistically reliable results for Government Hill Elementary School's Parent/Guardian Survey Results.