

Gruening Middle School Overview

Statement of Program

Gruening Middle School is a learning community of approximately 600 students located in Eagle River. Gruening has a successful comprehensive academic program, supported by high expectations and exceptional support from parents and the community. Gruening uses a team-based approach for instruction, engages parents in student-led conferences and works to provide timely information to parents.

The team approach provides a comfortable environment for students new to middle school, and enables teachers to collaborate with each other to create interdisciplinary lessons or projects. Options for gifted and remedial instruction are offered in language arts, science, reading and mathematics. Elective opportunities are provided in art, band, orchestra, choir, drama, business education, world languages, as well as a number of other options.

Gruening has a well-rounded special education program that includes intensive needs, collaboration and behavioral support. The use of technology is integral to our education program. Gruening promotes positive student behavior throughout the school through the Aggressors, Victims and Bystanders program, community-building activities and a Prevention/Intervention Program.

From the School Report Card

School Goals	
Goal	Level of Achievement
Each subgroup will show a 10 percent decrease in the number of students rated not proficient on the state math assessment	Not Attained
Each subgroup will show at least a 10 percent decrease in the number of students rated not proficient on the state language arts assessment.	Partially Attained
Positive peer relationships will be promoted along with a sense of belonging and an appreciation for diversity through the implementation of social and emotional learning activities.	Attained

From the School Report Card

Budget*	
2006-07 Actual Expenditures	\$3,839,510
2007-08 Revised Budgeted Amount	\$4,615,716
2008-09 Proposed Budget	\$5,151,109

*Dollars budgeted or expended are general fund only
From IFAS

Gruening Middle School Characteristics			
	School	District	Source of Information
Membership	596	48,858	Fall OASIS
Capacity	90.84%	N/A	2008-18 ASD Capital Improvement Plan
Attendance Rate	94.24%	92.83%	NCLB Summer Data Collection
Retention Rate K-8	0.00%	0.60%	SMS and NCLB Summer Data Collection
Transiency Rate	14.86%	26.07%	NCLB Summer Data Collection
Economically Disadvantaged	101	17,717	Fall OASIS
Average Weekly Volunteer Hours	20	4,660	Department of Education Report Card Report
Dropout Rate	0.00%	3.93%	NCLB Summer Data Collection & Fall Oasis
Students Taking the Alternate Assessment	2	228	SMS
Change in Enrollment	-1.65%	-0.76%	Fall Oasis

Teacher Qualification				
Number of Teachers	Percent Fully Licensed	Percent With Advanced Degrees	Number Nationally Board Certified	Percent of Classes Taught by "Highly Qualified Teachers"
40	100.00%	52.50%	1	91.93%

Gruening Middle School Business Partnerships
Eagle River Rotary; Kaladi Brothers Coffee Co.; Sleepy Dog Coffee Co.; Wells Fargo Bank, Eagle River; Eagle River Job Center; USKH; Aurora Vending

From the School Report Card

Ethnicity Report							
African-American/Black	Alaska Native/American Indian	Asian	Native Hawaiian/Other Pacific Islander	White	Hispanic	Multi-Ethnic	Total
34	20	13	1	423	51	54	596

From Fall Oasis

Full Academic Year		
Students Enrolled	Students Enrolled for FAY	Percent FAY
596	565	94.80%

From participation file (Grades 3-10)

Total Dropout Rate - Gruening Middle School								
	African-American/Black	Alaska Native/American Indian	Asian	Native Hawaiian/Other Pacific Islander	White	Hispanic	Multi-Ethnic	Total
Enrollment	34	20	13	*	422	51	53	594
Final Dropouts	*	*	*	*	*	*	*	*
% of Dropouts	0.00%	0.00%	0.00%	0.00%	0.00%	0.00%	0.00%	0.00%

From NCLB Summer Data Collection and Fall OASIS

* Results cannot be published without releasing personally identifiable information based upon the EED reporting protocol

**Grueing Middle School
2007-08 Adequate Yearly Progress
Status Report**

Does Not Meet AYP
Level 5

AMO For Language Arts: 77.18%
AMO For Mathematics: 66.09%

Group	Participation Rate				"FAY" (D) Tested & Enrolled "FAY"	Language Arts Performance				Mathematics Performance			
	(A) Number Enrolled	(B) Number Tested	Participation Rate (%)	(C) Participation Rate Met		(E) Proficient on LA	(F) Percent Proficient on LA	(G) LA Target	(H) Met AMO for LA	(I) Proficient on Mathematics	(J) Percent Proficient in Mathematics	(K) Mathematics Target	(L) Met AMO for Mathematics
All Students	593	589	99.3%	Yes	559	498	89.1%	73%	Yes	418	74.8%	61.4%	Yes
AF AM	35	35	100%	Yes	32	24	75%	59.9%	Yes	13	40.6%	46.6%	No
AKNA/AI	18	17	N/A	N/A	N/A	N/A	N/A	N/A	N/A	N/A	N/A	N/A	N/A
Asian/NH/OPI	13	13	N/A	N/A	N/A	N/A	N/A	N/A	N/A	N/A	N/A	N/A	N/A
White	425	422	99.3%	Yes	400	364	91%	72.3%	Yes	314	78.5%	60.6%	Yes
Hispanic	47	47	100%	Yes	44	37	84.1%	62.4%	Yes	29	65.9%	49.5%	Yes
ME	55	55	100%	Yes	53	50	94.3%	63.7%	Yes	40	75.5%	50.9%	Yes
EDS	104	103	99%	Yes	91	71	78%	66.9%	Yes	52	57.1%	54.5%	Yes
SWD	64	63	98.4%	Yes	59	33	55.9%	64.4%	Yes-SH	21	35.6%	51.7%	No
LEP	18	18	N/A	N/A	N/A	N/A	N/A	N/A	N/A	N/A	N/A	N/A	N/A

Attendance Rate: Met

94.2% (Threshold is 85%)

N/A is used to indicate:

- (1) Subgroups with 20 or fewer students enrolled on the first day of testing shall not be included in participation rate calculation.
- (2) Subgroups with 25 or fewer students enrolled for the "full academic year" shall not have the performance score computed.

* For the groups where the number enrolled is less than or equal to 40, participation is met when no more than two miss the test. Groups can also meet this target using the average of the past two or three years.

** When a group achieves a "Yes" without meeting the listed target, it has done so using either the 99% confidence interval or Safe Harbor.

*** The results cannot be published without releasing personally identifiable information based upon the EED reporting protocol.

This document was prepared by the ASD Assessment and Evaluation Department.

7/10/2008

Gruening Middle School
2007-08 Adequate Yearly Progress
Growth Report

The AYP growth reports are generated by the Alaska State Department of Education and Early Development. The reports can be found online at: http://www.asdk12.org/depts/assess_eval/AYP/State_AS_D_AYG_0708.pdf

SBA Proficiency Comparison by Grade for Gruening Middle School																
	Reading Percent Proficient				Writing Percent Proficient				Mathematics Percent Proficient				Science* Percent Proficient			
	04-05	05-06	06-07	07-08	04-05	05-06	06-07	07-08	04-05	05-06	06-07	07-08	04-05	05-06	06-07	07-08
All Students	91.53%	93.08%	92.66%	93.19%	87.26%	87.55%	81.83%	83.30%	75.79%	75.84%	80.03%	74.53%	N/A	N/A	N/A	63.57%
Grade 7	89.66%	90.36%	92.50%	92.97%	86.46%	84.86%	79.72%	84.03%	72.76%	77.69%	80.36%	77.96%	N/A	N/A	N/A	N/A
Grade 8	93.50%	95.45%	92.81%	93.43%	88.09%	89.90%	83.77%	82.48%	78.93%	74.22%	79.74%	70.59%	N/A	N/A	N/A	63.57%

* 2007-08 was the first year Science was administered for grades 4, 8 and 10 on the SBA.

SBA Proficient & Not Proficient by NCLB Groups for Gruening Middle School								
	Reading		Writing		Mathematics		Science	
	Percent Proficient	Percent Not Proficient	Percent Proficient	Percent Not Proficient	Percent Proficient	Percent Not Proficient	Percent Proficient	Percent Not Proficient
All Students	93.19%	6.81%	83.30%	16.70%	74.53%	25.47%	63.57%	36.43%
AF AM	82.86%	17.14%	68.57%	31.43%	42.86%	57.14%	35.29%	64.71%
AKNA/AI	81.25%	18.75%	62.50%	37.50%	68.75%	31.25%	60% or fewer	40% or more
Asian	80% or more	20% or fewer	80% or more	20% or fewer	80% or more	20% or fewer	25% or more	75% or fewer
NH/OPI	*	*	*	*	*	*	*	*
White	94.30%	5.70%	85.27%	14.73%	78.04%	21.96%	70.27%	29.73%
Hispanic	93.62%	6.38%	82.98%	17.02%	65.96%	34.04%	39.29%	60.71%
Multi-Ethnic	94.55%	5.45%	83.64%	16.36%	74.55%	25.45%	66.67%	33.33%
EDS	85.44%	14.56%	73.79%	26.21%	56.86%	43.14%	41.46%	58.54%
Non-EDS	94.83%	5.17%	85.33%	14.67%	78.26%	21.74%	67.54%	32.46%
SWD	66.04%	33.96%	35.85%	64.15%	28.30%	71.70%	21.43%	78.57%
Non-SWD	95.88%	4.12%	88.01%	11.99%	79.14%	20.86%	68.46%	31.54%
LEP	60% or more	40% or fewer	50.00%	50.00%	50.00%	50.00%	*	*
Not LEP	93.46%	6.54%	83.65%	16.35%	74.78%	25.22%	63.77%	36.23%
Migrant	70.00%	30.00%	70.00%	30.00%	80% or more	20% or fewer	40% or more	60% or fewer
Not Migrant	93.59%	6.41%	83.54%	16.46%	74.43%	25.57%	63.26%	36.74%
Female	93.58%	6.42%	87.84%	12.16%	73.99%	26.01%	61.07%	38.93%
Male	92.78%	7.22%	78.69%	21.31%	75.09%	24.91%	65.94%	34.06%

* Results cannot be published without releasing personally identifiable information based upon the EED reporting protocol

SBA Mean Scale Score Comparison by NCLB Groups for Gruening Middle School								
	Reading		Writing		Mathematics		Science***	
	06-07	07-08	06-07	07-08	06-07	07-08	06-07	07-08
All Students	392.66	392.71	362.83	361.64	359.10	351.36	N/A	327.54
AF AM	350.50	355.60	329.68	328.40	318.11	303.83	N/A	280.12
AKNA/AI	362.34	348.81	332.81	312.31	335.82	315.25	N/A	267.29
Asian	401.54**	410.75	376.25**	384.17	391.25**	383.42	N/A	345.75
NH/OPI	N/A	*	N/A	*	N/A	*	N/A	*
White	400.13	397.67	369.74	366.57	365.39	356.13	N/A	338.05
Hispanic	378.97	385.49	347.10	353.89	330.71	337.55	N/A	293.68
ME	395.64	395.42	358.75	362.36	362.05	361.71	N/A	331.04
EDS	361.34	366.43	330.63	332.67	326.67	316.59	N/A	293.17
Non-EDS	399.98	398.30	370.40	367.80	366.85	358.70	N/A	333.71
SWD	333.73	327.17	292.61	291.55	290.57	278.45	N/A	265.64
Non-SWD	400.79	399.22	372.46	368.59	368.40	358.62	N/A	334.73
LEP	356.33	315.00	313.89	279.83	346.83	285.83	N/A	*
Not LEP	393.81	393.51	364.38	362.48	359.49	352.04	N/A	328.12
Migrant	370.60	358.00	319.22	345.60	330.40	334.30	N/A	329.40
Not Migrant	393.05	393.31	363.51	361.91	359.60	351.66	N/A	327.50
Female	399.65	395.63	379.80	373.63	357.48	348.09	N/A	322.32
Male	386.18	389.74	347.25	349.44	360.59	354.71	N/A	332.49

* Results cannot be published without releasing personally identifiable information based upon the EED reporting protocol

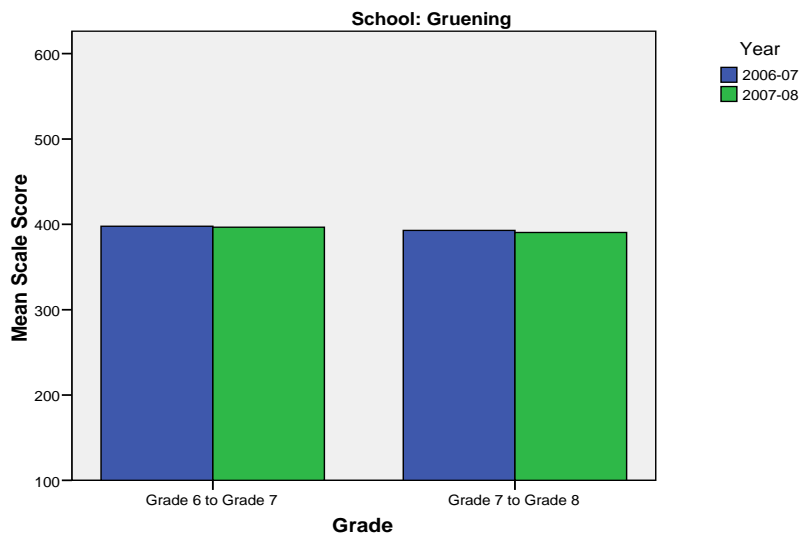
** Prior to 2007-08 the Asian category includes Native Hawaiian/Other Pacific Islander. In 2007-08 Native Hawaiian/Other Pacific Islander is a separate ethnic category.

*** 2007-08 was the first year Science was administered for grades 4, 8 and 10 on the SBA.

Gruening Middle School SBA Change Average Scale Score by NCLB Groups: Reading						
	Average Scale Score of Students Tested in District Both Years			Average Scale Score of Students Tested in District Both Years		
	Grade 6-in 06-07	Grade 7 in 07-08	Difference	Grade 7-in 06-07	Grade 8 in 07-08	Difference
All Students	397.66	396.54	-1.12	392.77	390.44	-2.34
African-American/Black	325.00	342.50	17.50	355.85	362.46	6.62
Alaska Native/American Indian	360.17	359.50	-0.67	360.75	345.63	-15.13
Asian	*	*	*	434.63	414.38	-20.25
Native Hawaiian/Other Pacific Islander	*	*	*	*	*	*
White	402.40	400.03	-2.37	398.98	396.94	-2.04
Hispanic	400.00	410.80	10.80	381.18	371.45	-9.73
Multi-Ethnic (2 or More Races)	403.69	401.88	-1.81	376.71	386.00	9.29
Economically Disadvantaged	373.88	364.38	-9.50	366.24	360.94	-5.30
Non-Economically Disadvantaged	403.31	404.18	0.87	397.17	395.33	-1.84
Students with Disabilities	328.09	323.09	-5.00	327.36	333.36	6.00
Students without Disabilities	404.11	403.35	-0.76	399.62	396.41	-3.21
LEP	*	*	*	*	*	*
Not LEP	398.54	397.51	-1.02	393.12	391.13	-2.00
Migrant	*	*	*	374.80	376.00	1.20
Not Migrant	398.26	397.16	-1.09	393.17	390.75	-2.41
Female	395.25	395.59	0.34	399.77	397.54	-2.23
Male	400.24	397.56	-2.68	385.14	382.69	-2.45

* Results cannot be published without releasing personally identifiable information based upon the EED reporting protocol

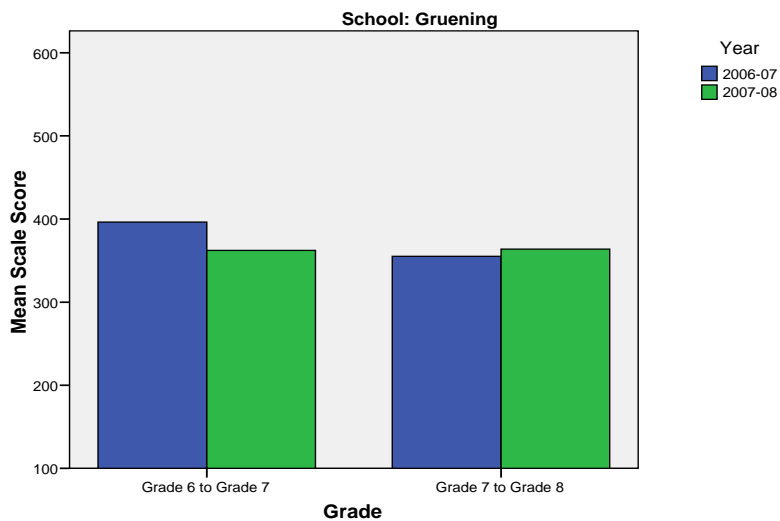
Change in Mean Scale Score in SBA Reading by Grade Between 2006-07 and 2007-08



Gruening Middle School SBA Change Average Scale Score by NCLB Groups: Writing						
	Average Scale Score of Students Tested in District Both Years			Average Scale Score of Students Tested in District Both Years		
	Grade 6-in 06-07	Grade 7 in 07-08	Difference	Grade 7-in 06-07	Grade 8 in 07-08	Difference
All Students	396.36	362.33	-34.03	355.15	363.82	8.68
African-American/Black	317.50	320.93	3.43	338.15	336.54	-1.62
Alaska Native/American Indian	345.50	325.50	-20.00	336.88	303.38	-33.50
Asian	*	*	*	382.63	388.13	5.50
Native Hawaiian/Other Pacific Islander	*	*	*	*	*	*
White	401.24	365.43	-35.81	358.83	370.49	11.66
Hispanic	402.20	368.33	-33.87	339.27	352.45	13.18
Multi-Ethnic (2 or More Races)	399.50	365.77	-33.73	350.15	354.55	4.40
Economically Disadvantaged	367.81	333.15	-34.65	330.30	330.33	0.03
Non-Economically Disadvantaged	403.14	369.26	-33.89	359.25	369.35	10.11
Students with Disabilities	312.13	295.04	-17.09	283.14	290.00	6.86
Students without Disabilities	404.17	368.57	-35.60	362.65	371.52	8.87
LEP	*	*	*	*	*	*
Not LEP	397.43	363.03	-34.40	356.04	365.01	8.97
Migrant	*	*	*	*	*	*
Not Migrant	397.36	362.60	-34.76	355.49	363.94	8.45
Female	404.40	369.96	-34.44	371.73	377.85	6.13
Male	387.77	354.17	-33.60	337.54	348.93	11.39

* Results cannot be published without releasing personally identifiable information based upon the EED reporting protocol

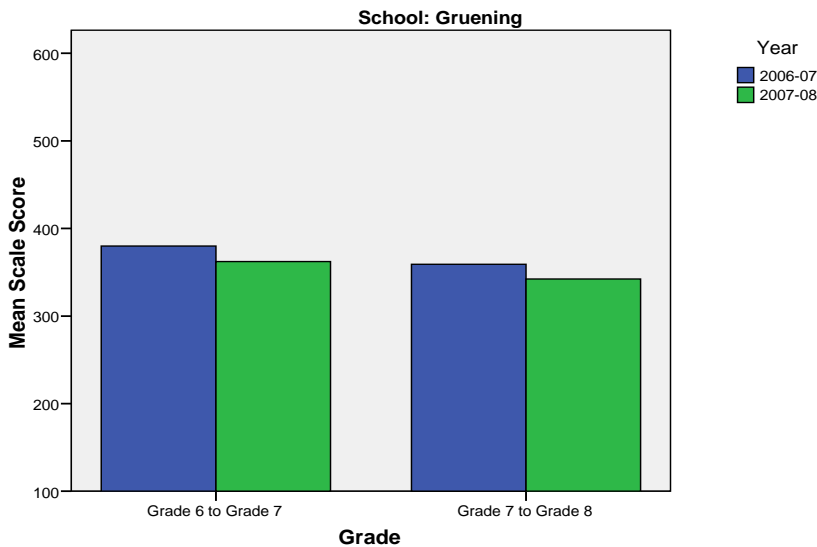
Change in Mean Scale Score in SBA Writing by Grade between 2006-07 and 2007-08



Gruening Middle School SBA Change Average Scale Score by NCLB Groups: Mathematics						
	Average Scale Score of Students Tested in District Both Years			Average Scale Score of Students Tested in District Both Years		
	Grade 6-in 06-07	Grade 7 in 07-08	Difference	Grade 7-in 06-07	Grade 8 in 07-08	Difference
All Students	379.99	362.17	-17.82	359.08	342.33	-16.75
African-American/Black	312.79	296.71	-16.07	320.31	312.62	-7.69
Alaska Native/American Indian	345.17	316.83	-28.33	319.13	319.50	0.38
Asian	*	*	*	410.00	376.25	-33.75
Native Hawaiian/Other Pacific Islander	*	*	*	*	*	*
White	383.42	366.40	-17.02	363.77	346.26	-17.51
Hispanic	388.60	356.53	-32.07	341.19	331.10	-10.10
Multi-Ethnic (2 or More Races)	388.65	375.12	-13.54	361.10	337.86	-23.24
Economically Disadvantaged	356.46	326.02	-30.44	318.36	301.85	-16.52
Non-Economically Disadvantaged	385.58	370.75	-14.83	365.87	349.08	-16.79
Students with Disabilities	297.13	286.17	-10.96	279.64	274.41	-5.23
Students without Disabilities	387.67	369.21	-18.46	367.44	349.48	-17.96
LEP	*	*	*	*	*	*
Not LEP	380.87	362.69	-18.18	359.94	343.20	-16.74
Migrant	*	*	*	352.60	340.80	-11.80
Not Migrant	380.60	362.45	-18.15	359.23	342.37	-16.86
Female	372.11	355.69	-16.43	362.92	341.03	-21.88
Male	388.40	369.09	-19.31	355.01	343.71	-11.29

* Results cannot be published without releasing personally identifiable information based upon the EED reporting protocol

Change in Mean Scale Score in SBA Mathematics by Grade between 2006-07 and 2007-08



Reading: SBA Results Compared for Gruening Middle School, District and State Grades 7 and 8															
	% Advanced Proficient			% Proficient			% Below Proficient			% Far Below Proficient			% Tested		
	School	District	State	School	District	State	School	District	State	School	District	State	School	District	State
All Students	44.12%	36.46%	34.57%	49.06%	48.69%	48.62%	5.45%	11.55%	12.88%	1.36%	3.29%	3.93%	98.99%	97.85%	97.86%
AF AM	25.71%	19.00%	20.66%	57.14%	58.30%	57.93%	*	17.03%	15.72%	*	5.68%	5.69%	100.00%	97.86%	98.38%
AKNA/AI	*	19.97%	15.19%	75.00%	52.76%	51.58%	18.75%	20.94%	25.14%	*	6.33%	8.08%	88.89%	95.36%	96.93%
Asian	50.00%	28.61%	27.53%	50.00%	54.01%	53.96%	*	13.72%	14.90%	*	3.65%	3.60%	100.00%	97.58%	97.49%
NH/OPI	*	8.40%	N/A	*	53.78%	N/A	*	28.57%	N/A	*	9.24%	N/A	100.00%	98.76%	N/A
White	47.98%	47.51%	45.02%	46.32%	43.41%	45.22%	4.28%	7.25%	7.53%	1.43%	1.83%	2.22%	99.06%	98.46%	98.29%
Hispanic	38.30%	27.54%	28.38%	55.32%	55.39%	54.32%	*	13.17%	13.31%	*	3.89%	3.98%	100.00%	97.80%	98.00%
ME	41.82%	30.61%	32.24%	52.73%	52.80%	52.18%	*	12.80%	12.02%	*	3.78%	3.56%	100.00%	97.04%	97.23%
EDS	25.24%	18.54%	20.30%	60.19%	54.95%	51.97%	*	20.04%	20.88%	*	6.47%	6.84%	99.04%	96.31%	95.86%
Not EDS	48.14%	46.21%	43.42%	46.69%	45.29%	46.55%	3.93%	6.93%	7.91%	1.24%	1.57%	2.12%	98.98%	98.71%	99.14%
SWD	5.66%	5.65%	5.39%	60.38%	39.65%	39.16%	26.42%	37.65%	36.10%	7.55%	17.06%	19.35%	94.64%	90.81%	92.10%
Non SWD	47.94%	40.59%	38.46%	47.94%	49.91%	49.89%	3.37%	8.05%	9.78%	0.75%	1.45%	1.87%	99.44%	98.88%	98.68%
LEP	*	4.34%	3.40%	50.00%	52.25%	45.68%	*	31.74%	37.23%	*	11.68%	13.69%	100.00%	95.57%	96.43%
Not LEP	44.41%	39.75%	38.87%	49.05%	48.33%	49.03%	5.34%	9.49%	9.52%	1.20%	2.44%	2.58%	98.98%	98.09%	98.06%
Migrant	30.00%	23.05%	18.13%	40.00%	50.51%	49.19%	*	20.34%	25.53%	*	6.10%	7.15%	100.00%	98.33%	98.16%
Not Migrant	44.37%	37.03%	35.71%	49.22%	48.62%	48.58%	5.20%	11.18%	12.00%	1.21%	3.17%	3.71%	98.97%	97.83%	97.84%
Female	44.93%	39.92%	38.60%	48.65%	49.13%	48.79%	*	8.92%	10.13%	*	2.04%	2.48%	98.67%	98.14%	98.03%
Male	43.30%	33.21%	30.74%	49.48%	48.29%	48.47%	5.15%	14.03%	15.49%	2.06%	4.48%	5.30%	99.32%	97.58%	97.70%

* Results cannot be published without releasing personally identifiable information based upon the EED reporting protocol

Writing: SBA Results Compared for Gruening Middle School, District and State Grades 7 and 8															
	% Advanced Proficient			% Proficient			% Below Proficient			% Far Below Proficient			% Tested		
	School	District	State	School	District	State	School	District	State	School	District	State	School	District	State
All Students	10.90%	11.86%	10.41%	72.40%	62.70%	61.09%	14.48%	18.67%	20.92%	2.21%	6.77%	7.58%	98.99%	97.97%	97.77%
AF AM	*	4.39%	4.97%	68.57%	57.68%	58.58%	28.57%	28.29%	27.26%	*	9.65%	9.19%	100.00%	97.44%	97.79%
AKNA/AI	*	3.72%	2.85%	62.50%	50.89%	46.57%	37.50%	31.02%	34.58%	*	14.38%	15.99%	88.89%	95.82%	97.09%
Asian	*	9.18%	8.28%	75.00%	62.10%	62.39%	*	21.87%	22.29%	*	6.85%	7.04%	100.00%	97.72%	97.64%
NH/OPI	*	*	N/A	*	*	N/A	*	33.47%	N/A	*	16.74%	N/A	100.00%	99.17%	N/A
White	12.59%	16.21%	14.37%	72.68%	66.42%	66.50%	12.83%	13.35%	14.89%	1.90%	4.01%	4.25%	99.06%	98.59%	98.10%
Hispanic	8.51%	10.06%	8.18%	74.47%	61.71%	63.88%	*	19.97%	21.03%	*	8.26%	6.91%	100.00%	97.51%	97.81%
ME	9.09%	9.36%	9.88%	74.55%	62.82%	62.78%	10.91%	20.05%	20.12%	5.45%	7.78%	7.21%	100.00%	97.40%	97.23%
EDS	*	3.77%	4.20%	*	54.85%	53.45%	23.30%	28.17%	29.69%	2.91%	13.20%	12.66%	99.04%	96.69%	95.78%
Not EDS	13.02%	16.27%	14.27%	72.31%	66.98%	65.82%	12.60%	13.48%	15.47%	2.07%	3.26%	4.43%	98.98%	98.69%	99.05%
SWD	*	0.94%	0.72%	*	26.86%	25.75%	56.60%	42.99%	44.66%	7.55%	29.21%	28.86%	94.64%	90.71%	91.85%
Non SWD	11.61%	13.31%	11.70%	76.40%	67.49%	65.79%	10.30%	15.42%	17.76%	1.69%	3.78%	4.75%	99.44%	99.03%	98.62%
LEP	*	1.05%	0.57%	50.00%	38.02%	31.72%	*	41.62%	45.08%	*	19.31%	22.63%	100.00%	95.57%	96.60%
Not LEP	11.02%	12.96%	11.78%	72.63%	65.22%	65.15%	14.46%	16.33%	17.58%	1.89%	5.49%	5.50%	98.98%	98.23%	97.94%
Migrant	*	4.38%	3.57%	70.00%	55.56%	48.98%	30.00%	27.95%	33.31%	*	12.12%	14.13%	100.00%	99.00%	98.24%
Not Migrant	11.09%	12.18%	10.89%	72.44%	63.00%	61.93%	14.21%	18.27%	20.06%	2.25%	6.55%	7.12%	98.97%	97.93%	97.74%
Female	14.53%	16.61%	14.82%	73.31%	65.43%	64.82%	10.47%	14.21%	16.01%	1.69%	3.75%	4.35%	98.67%	98.42%	98.00%
Male	7.22%	7.37%	6.23%	71.48%	60.12%	57.53%	18.56%	22.88%	25.59%	2.75%	9.63%	10.65%	99.32%	97.55%	97.56%

* Results cannot be published without releasing personally identifiable information based upon the EED reporting protocol

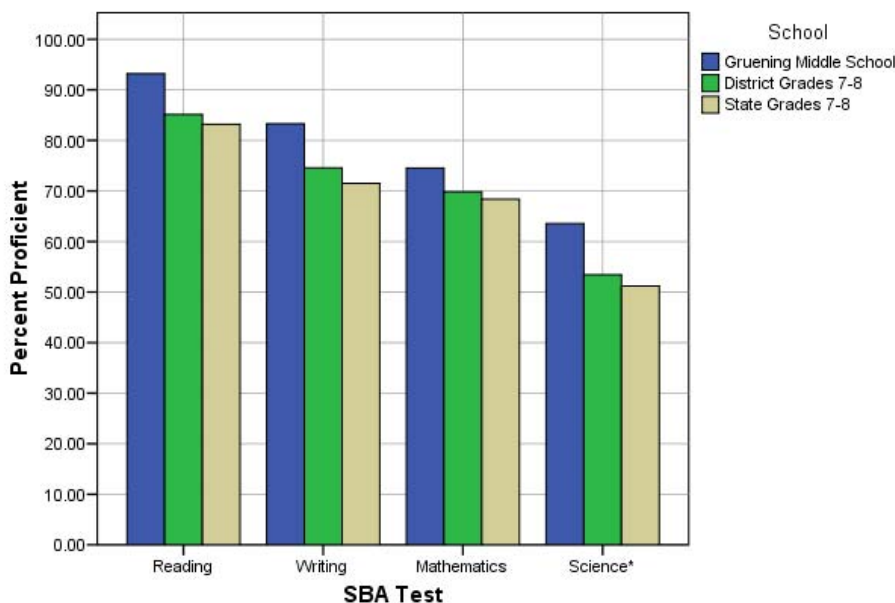
Mathematics: SBA Results Compared for Gruening Middle School, District and State Grades 7 and 8															
	% Advanced Proficient			% Proficient			% Below Proficient			% Far Below Proficient			% Tested		
	School	District	State	School	District	State	School	District	State	School	District	State	School	District	State
All Students	34.36%	31.33%	29.02%	40.17%	38.49%	39.36%	17.61%	17.87%	18.72%	7.86%	12.31%	12.90%	98.65%	97.81%	97.73%
AF AM	14.29%	12.58%	14.65%	28.57%	35.54%	36.40%	34.29%	28.26%	26.44%	22.86%	23.62%	22.51%	100.00%	96.79%	97.50%
AKNA/AI	*	17.89%	14.46%	62.50%	34.80%	35.46%	25.00%	25.04%	26.44%	*	22.28%	23.64%	88.89%	95.20%	96.77%
Asian	50.00%	29.58%	27.87%	41.67%	40.26%	40.20%	*	18.76%	18.72%	*	11.40%	13.21%	100.00%	98.72%	98.64%
NH/OPI	*	6.67%	N/A	*	35.42%	N/A	*	26.67%	N/A	*	31.25%	N/A	100.00%	99.59%	N/A
White	36.75%	40.28%	36.66%	41.29%	38.52%	40.75%	14.56%	13.95%	14.82%	7.40%	7.25%	7.77%	98.59%	98.19%	98.00%
Hispanic	23.40%	22.65%	22.24%	42.55%	40.98%	41.68%	27.66%	21.61%	22.44%	6.38%	14.75%	13.64%	100.00%	98.24%	98.48%
ME	43.64%	27.20%	28.57%	30.91%	40.12%	39.73%	20.00%	18.05%	18.13%	5.45%	14.63%	13.57%	100.00%	97.04%	96.97%
EDS	14.71%	15.55%	16.77%	42.16%	37.90%	38.20%	29.41%	24.48%	24.34%	13.73%	22.08%	20.69%	98.08%	96.54%	95.81%
Not EDS	38.51%	39.96%	36.63%	39.75%	38.82%	40.08%	15.11%	14.26%	15.23%	6.63%	6.97%	8.06%	98.77%	98.52%	98.96%
SWD	*	5.81%	5.39%	*	20.26%	22.07%	35.85%	26.66%	28.40%	35.85%	47.27%	44.13%	94.64%	90.17%	92.02%
Non SWD	37.59%	34.73%	32.17%	41.54%	40.92%	41.67%	15.79%	16.70%	17.43%	5.08%	7.66%	8.73%	99.07%	98.92%	98.54%
LEP	*	5.73%	4.98%	50.00%	30.10%	27.54%	*	32.01%	32.96%	*	32.16%	34.52%	100.00%	97.42%	97.06%
Not LEP	34.72%	34.01%	32.36%	40.07%	39.37%	41.00%	17.44%	16.39%	16.74%	7.77%	10.23%	9.89%	98.64%	97.85%	97.82%
Migrant	*	17.29%	17.58%	60.00%	40.68%	36.29%	*	22.37%	25.14%	*	19.66%	20.99%	100.00%	98.33%	98.08%
Not Migrant	34.61%	31.93%	29.81%	39.83%	38.40%	39.57%	17.57%	17.68%	18.28%	8.00%	11.99%	12.34%	98.63%	97.79%	97.70%
Female	32.09%	30.98%	28.90%	41.89%	39.19%	40.85%	18.92%	18.89%	19.04%	7.09%	10.94%	11.22%	98.67%	98.31%	98.00%
Male	36.68%	31.67%	29.13%	38.41%	37.83%	37.94%	16.26%	16.90%	18.42%	8.65%	13.60%	14.50%	98.63%	97.34%	97.46%

* Results cannot be published without releasing personally identifiable information based upon the EED reporting protocol

Science: SBA Results Compared for Gruening Middle School, District and State Grade 8															
	% Advanced Proficient			% Proficient			% Below Proficient			% Far Below Proficient			% Tested		
	School	District	State	School	District	State	School	District	State	School	District	State	School	District	State
All Students	32.34%	27.02%	25.2%	31.23%	26.43%	26.0%	24.16%	20.65%	21.3%	12.27%	25.90%	27.4%	97.46%	96.39%	94.91%
AF AM	*	10.34%	10.7%	*	19.40%	21.1%	29.41%	25.43%	26.1%	35.29%	44.83%	42.1%	100.00%	96.27%	94.36%
AKNA/AI	*	10.33%	8.9%	*	25.84%	18.0%	57.14%	21.88%	23.7%	*	41.95%	49.4%	70.00%	93.47%	93.67%
Asian	37.50%	16.86%	16.1%	50.00%	22.00%	23.2%	*	26.57%	25.5%	*	34.57%	35.2%	100.00%	97.77%	97.29%
NH/OPI	*	6.42%	N/A	*	11.93%	N/A	*	17.43%	N/A	*	64.22%	N/A	N/A	99.09%	N/A
White	36.76%	38.15%	35.1%	33.51%	29.71%	30.0%	23.24%	17.80%	19.0%	6.49%	14.34%	15.9%	98.40%	96.75%	95.14%
Hispanic	14.29%	16.57%	15.8%	25.00%	25.60%	27.5%	32.14%	27.11%	26.3%	28.57%	30.72%	30.4%	96.55%	96.79%	95.92%
ME	41.67%	21.93%	23.0%	25.00%	24.28%	24.2%	12.50%	20.37%	20.9%	20.83%	33.42%	31.9%	100.00%	95.04%	93.83%
EDS	12.20%	10.38%	12.3%	29.27%	21.96%	21.1%	36.59%	22.76%	22.7%	21.95%	44.89%	43.9%	95.35%	94.85%	93.13%
Not EDS	35.96%	35.95%	33.1%	31.58%	28.83%	29.0%	21.93%	19.52%	20.5%	10.53%	15.70%	17.4%	97.85%	97.25%	96.02%
SWD	*	4.72%	4.3%	*	11.32%	9.4%	50.00%	20.28%	18.8%	28.57%	63.68%	67.5%	90.32%	89.45%	89.82%
Non SWD	36.10%	30.01%	28.0%	32.37%	28.46%	28.2%	21.16%	20.70%	21.6%	10.37%	20.83%	22.1%	98.37%	97.41%	95.62%
LEP	*	2.59%	1.7%	*	7.78%	6.0%	*	21.90%	18.4%	*	67.72%	73.5%	100.00%	98.02%	94.82%
Not LEP	32.83%	29.64%	28.5%	30.94%	28.43%	28.8%	24.15%	20.52%	21.7%	12.08%	21.42%	21.0%	97.43%	96.22%	94.92%
Migrant	*	13.46%	11.5%	60.00%	28.85%	20.9%	*	19.87%	20.2%	*	37.82%	47.4%	100.00%	93.41%	95.03%
Not Migrant	32.58%	27.63%	26.2%	30.68%	26.32%	26.4%	24.24%	20.69%	21.4%	12.50%	25.36%	26.1%	97.42%	96.54%	94.90%
Female	32.06%	25.67%	23.7%	29.01%	26.30%	27.0%	25.19%	22.06%	22.4%	13.74%	25.96%	27.0%	96.32%	96.89%	95.23%
Male	32.61%	28.29%	26.8%	33.33%	26.55%	25.1%	23.19%	19.31%	20.3%	10.87%	25.84%	27.8%	98.57%	95.93%	94.60%

* Results cannot be published without releasing personally identifiable information based upon the EED reporting protocol

2007-08 SBA Results Compared for Gruening Middle School, District and State

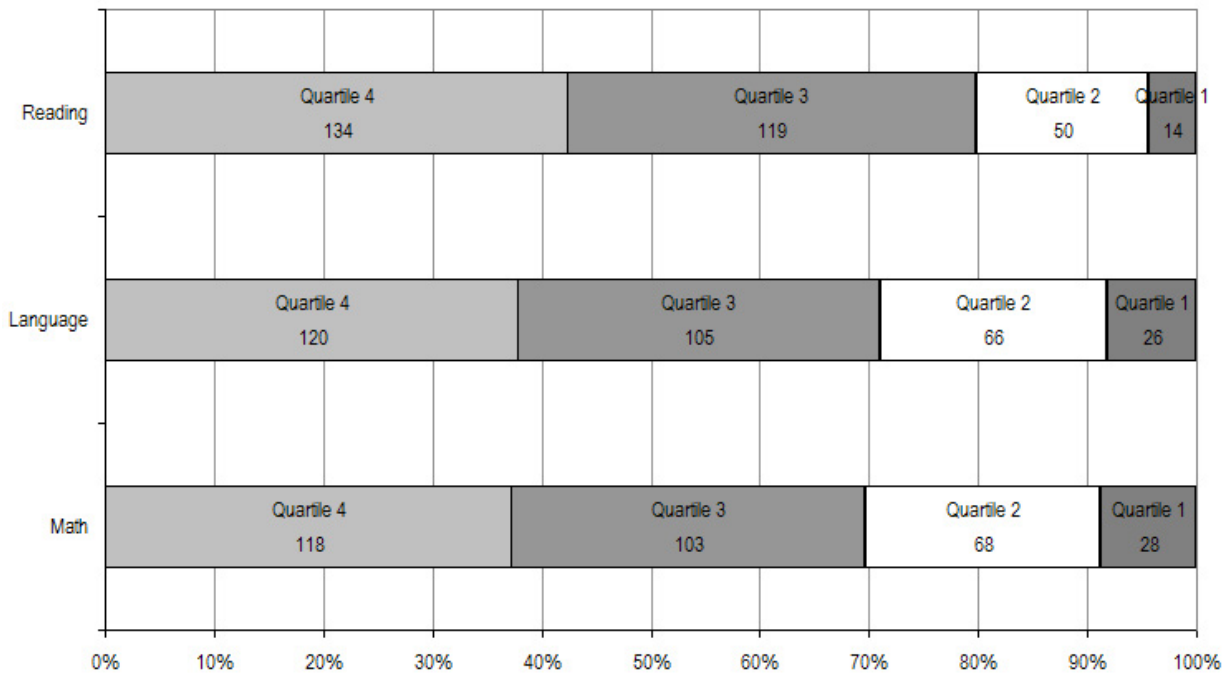


* 2007-08 was the first year Science was administered for grades 4, 8 and 10 on the SBA.

Gruening Middle School TerraNova Grade 7 Percent in Each Quartile								
Reading	Above Average		Average				Below Average	
	4th Quartile (76-99 percentile)		3rd Quartile (51-75 percentile)		2nd Quartile (26-50 percentile)		1st Quartile (1-25 percentile)	
	School	District	School	District	School	District	School	District
07-08	42.27%	30.31%	37.54%	32.50%	15.77%	24.54%	4.42%	12.66%
06-07	41.0%	35.6%	33.1%	28.0%	20.1%	21.5%	5.8%	14.9%
05-06	47.6%	34.6%	27.0%	28.4%	14.9%	21.8%	10.5%	15.3%
04-05	44.2%	33.9%	37.2%	27.1%	13.3%	21.7%	5.3%	17.4%
03-04	51.6%	35.1%	27.7%	28.2%	14.0%	21.4%	6.7%	15.3%
Language								
07-08	37.85%	30.26%	33.12%	29.23%	20.82%	25.08%	8.20%	15.43%
06-07	41.7%	35.4%	33.8%	28.7%	17.6%	21.5%	6.8%	14.3%
05-06	45.2%	34.9%	26.6%	28.4%	16.9%	21.4%	11.3%	15.3%
04-05	46.0%	34.4%	30.9%	28.2%	16.1%	20.5%	7.0%	16.9%
03-04	44.9%	35.3%	30.5%	28.5%	19.3%	21.7%	5.3%	14.5%
Mathematics								
07-08	37.22%	32.27%	32.49%	26.81%	21.45%	24.16%	8.83%	16.76%
06-07	31.3%	31.5%	34.2%	28.3%	22.2%	23.0%	12.4%	17.2%
05-06	37.5%	31.4%	29.8%	27.8%	21.0%	23.4%	11.7%	17.4%
04-05	31.9%	29.7%	33.3%	26.4%	18.9%	22.9%	15.8%	20.9%
03-04	33.3%	30.2%	36.5%	27.6%	17.7%	23.9%	12.4%	18.4%

The double bold line indicates a change from the TerraNova 2nd edition to the TerraNova 3rd edition.

2007-08 TerraNova 3rd Edition Grade 7 Percent and Count of Students in Each Quartile for Gruening Middle School



Climate Survey Results for Gruening Middle School

The Anchorage School District administered the School Climate and Connectedness Surveys in spring 2008 to students in grades 5-12, all school staff and parents/guardians of students in grades K-12. The surveys were done to provide schools with information about perceptions and experiences related to school climate for use in setting school goals and redirecting resources. In the spring of 2008 grades 3 and 4 students were involved in a pilot survey for measuring school climate and connectedness. The results are currently under review by the American Institutes for Research.

Respondents were asked to answer a series of questions that were related to a certain concept. For each item, there were five options from which to choose a response. The answer options ranged from strongly disagree (1) to strongly agree (5).

Student Survey Response Rate Grades 5-12 Survey			
	Gruening Middle School	Overall Middle Schools	District**
# Surveys Completed	521	5,722	21,629
# Reportable Surveys	447	5,021	18,508
# Students Enrolled*	596	7,188	28,945
Reportable Response Rate	75.00%	69.85%	63.94%

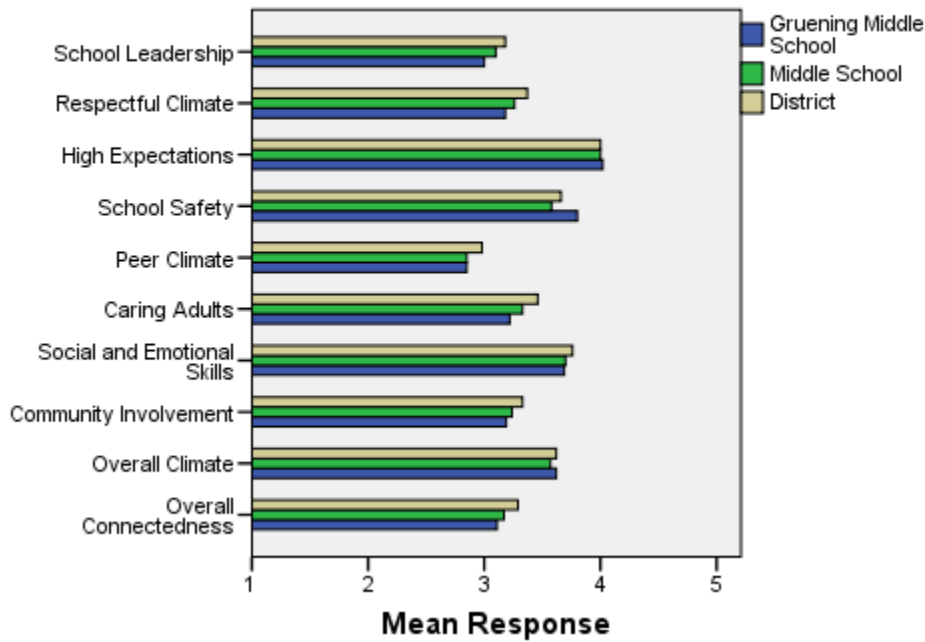
*Number enrolled as of April 1, 2008

**District data does not include KCC responses

Each question in the survey related to a factor or concept, and a score was calculated based on the mean response for the questions related to each factor. The factors measured in the survey were:

- **School Leadership and Student Involvement:** This factor reflects students' feelings about the decision making of school leaders as well as student participation in the school governance. Students selected responses between 1 and 5 where 1 indicates a low level of school leadership and student involvement and 5 indicates a high level of school leadership and student involvement.
- **Respectful Climate:** This factor reflects students' feelings about fairness of rules and respect for students' contributions. Students selected responses between 1 and 5 where 1 indicates a lack of a respectful climate and 5 indicates a highly respectful climate for students.
- **High Expectations:** This factor reflects students' feelings about their own expectations as well as those of adults in their school and community. Students selected responses between 1 and 5 where 1 indicates a lack of high expectations and 5 indicates a high level of high expectations.
- **School Safety:** This factor reflects students' feelings about bullies and gangs at school as well as general crime and violence in the community. Students selected responses between 1 and 5 where 1 indicates a low level of school safety and 5 indicates a high level of school safety.
- **Peer Climate:** This factor reflects students' feelings about how respectful students are to one another and how helpful students are to other students. Students selected responses between 1 and 5 where 1 indicates a more negative peer climate and 5 indicates a very positive peer climate at the school.
- **Caring Adults:** This factor reflects students' feelings about how close they feel to adults in the school. Students selected responses between 1 and 5 where 1 indicates a lack of caring adult relationships and 5 indicates strong caring adult relationships at the school.
- **Social and Emotional Learning:** This factor reflects students' ability to think about the consequences of their actions and to empathize with others. Students selected responses between 1 and 5 where 1 indicates that students at the school perceive themselves as having poorer social and emotional learning, and 5 indicates higher levels of social and emotional learning.
- **Community Involvement:** This factor reflects students' feelings about how supportive and welcoming the school is with parents and the community. Students selected responses between 1 and 5 where 1 indicates a less supportive and welcoming environment and 5 indicates a more supportive and welcoming environment.
- **Overall Climate:** The overall climate score was computed as the mean of three scales: school leadership, high expectations and school safety.
- **Overall Connectedness:** Overall connectedness score was computed as a mean of four scales: respectful climate, peer climate, caring adults and community involvement.

Climate and Connectedness Student Survey - Gruening



Student Survey Mean Response by Factors Related to School Climate - Overall District			
	Gruening Middle School	Overall Middle Schools	District
School Leadership	3.00	3.10	3.18
Respectful Climate	3.18	3.26	3.37
High Expectations	4.02	4.00	4.00
School Safety	3.80	3.58	3.66
Peer Climate	2.85	2.85	2.98
Caring Adults	3.22	3.33	3.46
Social and Emotional Skills	3.69	3.70	3.76
Community Involvement	3.19	3.24	3.33
Overall Climate	3.62	3.57	3.62
Overall Connectedness	3.11	3.17	3.29

Range is from a low of 1 to a high of 5

Students were also asked to answer questions related to school danger. The following table provides the responses for those questions:

Student Survey Results of the School Danger Questions - Percent of Students Responding in Each Category					
	0 Times	1-2 Times	3-6 Times	7-12 Times	> 12 Times
Gruening Middle School					
Under the influence of drugs?	64.79%	18.74%	6.09%	3.16%	7.22%
Under the influence of alcohol?	65.38%	18.10%	8.37%	4.07%	4.07%
Destroy things (vandalism)?	35.10%	32.10%	16.40%	8.78%	7.62%
Get into fights?	26.80%	41.22%	19.82%	6.53%	5.63%
Steal things?	39.82%	26.02%	17.65%	8.60%	7.92%
Threaten or bully?	31.15%	24.60%	15.12%	9.93%	19.19%
Under the influence of inhalants?	65.08%	17.23%	6.58%	3.40%	7.71%
Carry weapons?	74.49%	18.74%	2.48%	2.48%	1.81%
Overall Middle Schools					
Under the influence of drugs?	64.66%	18.15%	7.88%	2.73%	6.57%
Under the influence of alcohol?	68.04%	16.94%	6.71%	3.34%	4.97%
Destroy things (vandalism)?	37.30%	30.56%	16.24%	7.13%	8.77%
Get into fights?	23.45%	34.39%	22.40%	8.21%	11.55%
Steal things?	40.02%	27.06%	14.98%	8.34%	9.60%
Threaten or bully?	28.58%	25.86%	17.04%	10.29%	18.23%
Under the influence of inhalants?	67.97%	15.45%	6.70%	3.13%	6.76%
Carry weapons?	68.29%	21.26%	4.76%	1.95%	3.75%
District					
Under the influence of drugs?	60.45%	15.05%	9.54%	3.92%	11.04%
Under the influence of alcohol?	63.11%	16.37%	8.90%	4.43%	7.19%
Destroy things (vandalism)?	41.26%	29.47%	15.45%	5.88%	7.94%
Get into fights?	26.40%	35.20%	21.96%	7.11%	9.33%
Steal things?	44.80%	25.68%	13.81%	6.98%	8.74%
Threaten or bully?	32.21%	26.21%	16.68%	9.27%	15.63%
Under the influence of inhalants?	72.79%	14.21%	5.66%	2.48%	4.87%
Carry weapons?	69.45%	19.15%	5.34%	2.01%	4.06%

Student Survey Results of the Mean Factor Score by Ethnicity (Self-Reported)							
	AKNA/AI	AF AM	Hispanic	Asian/NH	White	Other	Multi-Ethnic
Gruening Middle School							
School Leadership	3.28	2.82	3.21	2.88	3.01	2.73	2.98
Respectful Climate	3.43	2.96	3.40	3.00	3.21	2.84	3.12
High Expectations	4.12	3.93	4.08	3.94	4.04	3.83	4.04
School Safety	3.56	3.86	3.89	3.46	3.84	3.43	3.89
Peer Climate	2.61	2.47	2.97	2.70	2.91	2.42	2.99
Caring Adults	3.20	3.19	3.08	3.33	3.26	2.85	3.21
Social and Emotional Skills	3.41	3.71	3.72	3.64	3.71	3.54	3.77
Community Involvement	3.37	2.90	3.30	3.19	3.22	2.88	3.23
Overall Climate	3.64	3.58	3.75	3.45	3.63	3.45	3.65
Overall Connectedness	3.16	2.87	3.25	3.03	3.15	2.80	3.13
Overall Middle Schools							
School Leadership	3.26	2.96	3.09	3.21	3.08	3.16	3.01
Respectful Climate	3.38	3.00	3.26	3.30	3.31	3.24	3.14
High Expectations	3.98	3.87	3.96	4.02	4.04	3.97	3.94
School Safety	3.51	3.42	3.51	3.40	3.72	3.39	3.56
Peer Climate	2.93	2.69	2.79	2.95	2.86	2.80	2.82
Caring Adults	3.38	3.23	3.24	3.24	3.40	3.31	3.28
Social and Emotional Skills	3.67	3.54	3.68	3.75	3.75	3.67	3.61
Community Involvement	3.30	3.10	3.20	3.23	3.28	3.23	3.18
Overall Climate	3.58	3.43	3.54	3.55	3.62	3.52	3.52
Overall Connectedness	3.23	2.99	3.13	3.18	3.21	3.15	3.11
District							
School Leadership	3.33	3.14	3.19	3.28	3.14	3.17	3.15
Respectful Climate	3.48	3.18	3.32	3.39	3.39	3.37	3.33
High Expectations	3.98	3.94	3.96	4.02	4.02	4.00	4.01
School Safety	3.60	3.48	3.55	3.47	3.78	3.51	3.62
Peer Climate	3.01	2.85	2.94	3.05	3.00	2.92	2.93
Caring Adults	3.49	3.43	3.37	3.33	3.51	3.42	3.46
Social and Emotional Skills	3.73	3.66	3.73	3.81	3.78	3.75	3.74
Community Involvement	3.37	3.22	3.31	3.29	3.34	3.34	3.31
Overall Climate	3.64	3.52	3.57	3.59	3.65	3.56	3.60
Overall Connectedness	3.33	3.17	3.24	3.26	3.31	3.26	3.27

Staff Survey Response Rate			
	Gruening Middle School	Overall Middle Schools	District**
# Surveys Completed	43	522	2,980
# Reportable Surveys	42	521	2,968
# Staff Members*	61	789	5,549
Reportable Response Rate	68.85%	66.03%	53.49%

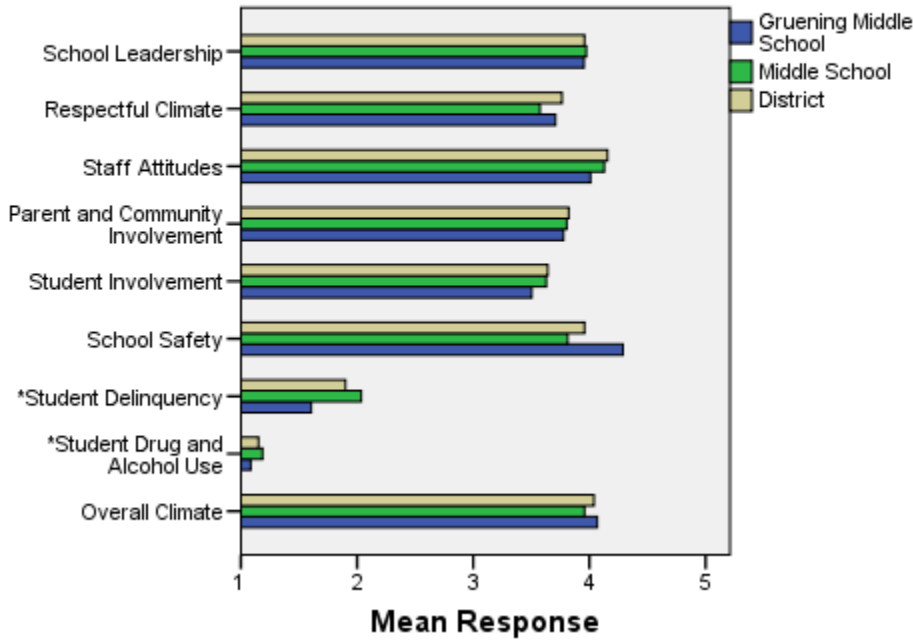
*Number staff as of April 1, 2008

**Includes KCC responses

Each question in the survey related to a factor or concept, and a score was calculated based on the mean response for the questions related to each factor. The factors were:

- **School Leadership:** This factor reflects staff members' feelings about the decision making of school leaders as well as the fairness of school rules. Staff members selected responses between 1 and 5 where 1 indicates a low level of school leadership and 5 indicates a high level of school leadership.
- **Respectful Climate:** This factor reflects staff members' feelings about how students treat each other and how well students and staff members treat one another. Staff members selected responses between 1 and 5 where 1 indicates a low level of respect and 5 indicates a high level.
- **Staff Attitudes:** This scale reflects staff members' feelings about the competence of teachers as well as how positive their attitudes are towards their jobs. Staff members selected responses between 1 and 5 where 1 indicates more negative staff attitudes and 5 indicates highly positive staff attitudes.
- **Parent and Community Involvement:** This factor reflects staff members' feelings about how accessible the school is for parents as well as how connected adults in the community are to the school. Staff members selected responses between 1 and 5 where 1 indicates a low level of parent and community involvement and 5 indicates a high level of parent and community involvement.
- **Student Involvement:** This factor reflects staff members' feeling about how involved students are in the decision making process. Staff members selected responses between 1 and 5 where 1 indicates a low level of student involvement and 5 indicates a high level of student involvement.
- **School Safety:** This factor reflects staff members' feelings about the impact of gangs and bullies as well as general crime and violence in the community. Staff members selected responses between 1 and 5 where 1 indicates a low level school safety and 5 indicates a high level of school safety.
- **Student Delinquency:** This factor uses staff members' reports of observing students getting into fights, stealing and bullying. The student delinquency and student drug and alcohol use scales differ from the other factors since the higher the score is the more negative the response. Staff members selected responses between 1 and 5 where 1 indicates a low level of student delinquency and 5 indicates a high level of student delinquency.
- **Student Drug and Alcohol Use:** This factor uses staff members' reports of observing students under the influence of drugs or alcohol. The student delinquency and student drug and alcohol use scales differ from the other factors since the higher the score is the more negative the response. Staff members selected responses between 1 and 5 where 1 indicates a low level of student drug and alcohol use and 5 indicates a high level of student drug and alcohol use.
- **Overall Climate:** Computed as the mean of 8 scales: school leadership, respectful climate, staff attitudes, parent and community involvement, student involvement, school safety, student delinquency, and drug and alcohol use scores.

Climate and Connectedness Staff Survey - Gruening



Staff Survey Mean Response by Factors Related to School Climate - Overall District			
	Gruening Middle School	Overall Middle Schools	District
School Leadership	3.95	3.97	3.96
Respectful Climate	3.71	3.57	3.76
Staff Attitudes	4.01	4.13	4.16
Parent & Community Involvement	3.78	3.81	3.82
Student Involvement	3.50	3.63	3.64
School Safety	4.29	3.81	3.96
Student Delinquency*	1.61	2.04	1.90
Student Drug & Alcohol Use*	1.09	1.19	1.15
Overall Climate	4.07	3.96	4.04

Range is from a low of 1 to a high of 5

*Student Drug and Alcohol Use and Student Delinquency factor scale scores differ from other factors since the higher the score is the more negative the response.

Staff members were also asked to answer questions related to school danger. The following table provides the responses for those questions:

Staff Survey Results of the School Danger Questions - Percent of Staff Responding in Each Category					
	0 Times	1-2 Times	3-6 Times	7-12 Times	> 12 Times
Gruening Middle School					
Under the influence of drugs?	84.62%	15.38%	0.00%	0.00%	0.00%
Under the influence of alcohol?	92.31%	7.69%	0.00%	0.00%	0.00%
Destroy things (vandalism)?	35.90%	41.03%	17.95%	2.56%	2.56%
Get into fights?	69.23%	28.21%	2.56%	0.00%	0.00%
Steal things?	48.72%	38.46%	12.82%	0.00%	0.00%
Threaten or bully?	30.77%	35.90%	30.77%	2.56%	0.00%
Under the influence of inhalants?	97.44%	2.56%	0.00%	0.00%	0.00%
Carry weapons?	94.87%	5.13%	0.00%	0.00%	0.00%
Overall Middle Schools					
Under the influence of drugs?	78.08%	15.88%	3.80%	1.57%	0.67%
Under the influence of alcohol?	83.94%	14.03%	1.36%	0.45%	0.23%
Destroy things (vandalism)?	26.97%	41.57%	19.33%	7.87%	4.27%
Get into fights?	31.99%	38.03%	19.02%	6.49%	4.47%
Steal things?	37.75%	37.53%	16.18%	3.60%	4.94%
Threaten or bully?	14.64%	36.26%	25.68%	12.61%	10.81%
Under the influence of inhalants?	95.02%	4.07%	0.45%	0.23%	0.23%
Carry weapons?	83.75%	14.67%	0.90%	0.23%	0.45%
District					
Under the influence of drugs?	82.61%	11.54%	4.11%	1.19%	0.55%
Under the influence of alcohol?	86.69%	10.21%	2.34%	0.60%	0.16%
Destroy things (vandalism)?	38.03%	36.81%	16.05%	5.07%	4.04%
Get into fights?	35.38%	38.78%	16.46%	4.83%	4.55%
Steal things?	41.82%	37.07%	14.02%	4.28%	2.81%
Threaten or bully?	22.88%	37.15%	21.97%	8.96%	9.04%
Under the influence of inhalants?	97.27%	2.42%	0.24%	0.04%	0.04%
Carry weapons?	88.47%	10.26%	1.11%	0.08%	0.08%

Staff Survey Results of the Mean Factor Score by Ethnicity (Self-Reported)						
	AKNA/AI	AF AM	Hispanic	Asian/NH	White	Multi-Ethnic
Gruening Middle School						
School Leadership	***	***	***	4.38	4.00	***
Respectful Climate	***	***	***	3.40	3.74	***
Staff Attitudes	***	***	***	4.20	4.03	***
Parent and Community Involvement	***	***	***	3.86	3.80	***
Student Involvement	***	***	***	4.00	3.53	***
School Safety	***	***	***	4.20	4.27	***
* Student Delinquency	***	***	***	1.20	1.60	***
* Student Drug and Alcohol Use	***	***	***	1.00	1.09	***
Overall Climate	***	***	***	4.23	4.09	***
Overall Middle Schools						
School Leadership	3.71	3.94	4.09	4.28	3.98	4.15
Respectful Climate	3.45	3.60	3.76	3.68	3.57	3.65
Staff Attitudes	3.88	4.03	4.20	4.18	4.13	4.24
Parent and Community Involvement	3.49	3.95	3.96	4.06	3.80	3.87
Student Involvement	3.31	3.70	4.22	4.10	3.61	3.63
School Safety	3.63	3.71	3.80	3.82	3.82	3.80
* Student Delinquency	2.11	2.67	1.60	1.92	2.03	2.03
* Student Drug and Alcohol Use	1.07	1.40	1.03	1.04	1.19	1.15
Overall Climate	3.63	3.90	4.13	4.11	3.96	4.08
District						
School Leadership	3.99	3.99	4.13	4.15	3.96	4.06
Respectful Climate	3.66	3.83	3.84	3.96	3.76	3.84
Staff Attitudes	4.06	4.11	4.27	4.22	4.16	4.29
Parent and Community Involvement	3.75	3.91	3.94	3.93	3.82	3.85
Student Involvement	3.62	3.67	3.85	3.88	3.64	3.72
School Safety	3.82	3.94	4.06	3.94	3.97	3.94
* Student Delinquency	1.88	1.90	1.67	1.61	1.91	2.05
* Student Drug and Alcohol Use	1.12	1.26	1.03	1.16	1.15	1.13
Overall Climate	3.96	4.04	4.20	4.18	4.04	4.09

*Student Drug and Alcohol Use and Student Delinquency factor scale scores differ from other factors since the higher the score is the more negative the response.

**Staff survey results do not include an 'Other' ethnicity category since staff in that category all chose at least one other ethnicity in addition to 'Other' and were included in the 'Multi-Ethnic' category as a result.

***Results can not be calculated because of missing responses

Parent/Guardian Survey Response Rate			
	Gruening Middle School	Overall Middle Schools	District**
# Surveys Completed	245	1,648	7,415
# Primary Guardians*	596	7,219	48,693
Response Rate	41.11%	22.83%	15.23%

*Number students enrolled as of April 1, 2008 without dual guardians included

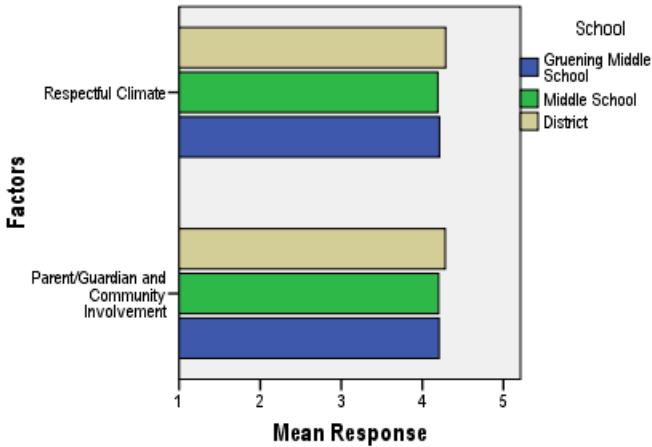
**District data

- 1) does not include KCC responses;
- 2) does include responses without a school designation

Two factors are calculated from the Parent/Guardian Survey. All results other than the factor scores below are reported by individual question: questions in the graphs are condensed phrases from the full question, while questions in the tables are the full question.

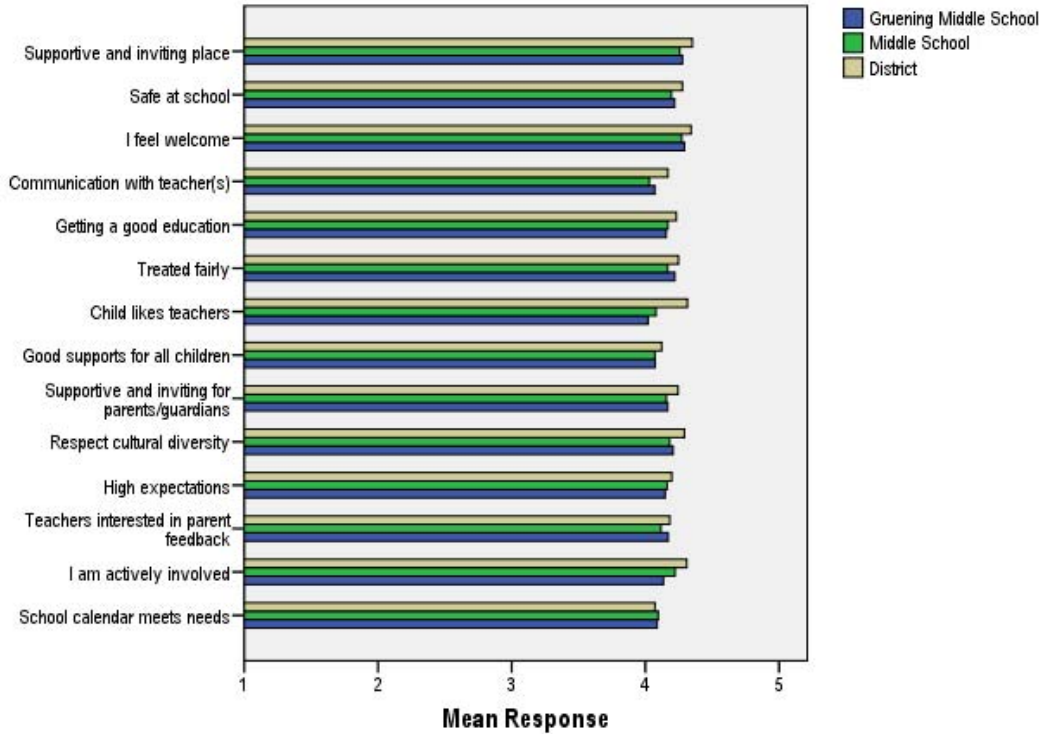
- **Respectful Climate:** This factor is calculated by determining the mean of five questions: 1) My child’s school is a supportive and inviting place, 2) I feel welcome at this school, 3) I am satisfied with communication with my child’s teacher(s), 4) This school is a supportive and inviting place for parents/guardians and 5) Adults at this school respect cultural diversity.
- **Parent/Guardian and Community Involvement:** This factor is calculated by determining the mean of five questions: 1) I feel welcome at this school, 2) This school is a supportive and inviting place for parents/guardians, 3) Adults at this school respect cultural diversity, 4) Teacher’s at my child’s school are interested in what I have to say and 5) I feel like I am actively involved in my child’s education.

Parent/Guardian Survey Mean Factor Scores (Range is from a low of 1 to a high of 5)



Parent/Guardian Factor Scores			
	Gruening Middle School	Overall Middle Schools	District
Respectful Climate	4.21	4.19	4.29
Parent/Guardian and Community Involvement	4.21	4.20	4.28

Climate and Connectedness Parent/Guardian Survey - Gruening



Parent/Guardian Mean Response by Questions Related to School Climate - Overall			
	Gruening Middle School	Overall Middle Schools	District
My child's school is a supportive and inviting place	4.28	4.26	4.35
My child is safe at school	4.22	4.19	4.28
I feel welcome at this school	4.29	4.27	4.34
I am satisfied with communication with my child's teacher(s)	4.07	4.03	4.17
My child is getting a good education at this school	4.16	4.17	4.23
My child is treated fairly at school	4.22	4.17	4.25
My child likes his/her teachers	4.02	4.08	4.31
At this school, there are good supports for all children, including children with learning disabilities	4.07	4.07	4.12
This school is a supportive and inviting place for parents/guardians	4.17	4.16	4.24
Adults at this school respect cultural diversity	4.21	4.18	4.29
Adults at this school have high expectations of my child	4.15	4.16	4.20
Teachers at my child's school are interested in what I have to say	4.17	4.12	4.18
I feel like I am actively involved in my child's education	4.13	4.22	4.31
The district's school calendar meets the needs of my child and our family	4.09	4.10	4.07

Range is from a low of 1 to a high of 5

Parent/Guardian Mean Response by Questions Related to School Climate by Ethnicity (Self-Reported)							
Gruening Middle School	AF AM	AKNA/AI	Asian/NH	White	Hispanic	ME	Other
My child's school is a supportive and inviting place	4.64	3.80	4.40	4.28	4.83	4.23	4.00
My child is safe at school	4.62	4.00	4.07	4.19	4.83	4.43	4.00
I feel welcome at this school	4.54	4.10	4.33	4.28	4.83	4.29	4.17
I am satisfied with communication with my child's teacher(s)	4.46	3.60	4.07	4.05	5.00	4.21	3.83
My child is getting a good education at this school	4.54	3.60	4.13	4.13	4.83	4.29	4.17
My child is treated fairly at school	4.31	3.70	4.27	4.26	4.50	4.29	3.83
My child likes his/her teachers	4.46	3.90	4.13	4.00	4.50	4.21	3.50
At this school, there are good supports for all children, including children with learning disabilities	4.31	3.67	3.79	4.08	4.83	4.36	3.80
This school is a supportive and inviting place for parents/guardians	4.46	4.00	4.33	4.15	4.83	4.14	3.83
Adults at this school respect cultural diversity	4.54	3.89	4.07	4.19	4.80	4.43	4.00
Adults at this school have high expectations of my child	4.62	3.80	4.00	4.14	4.83	4.21	4.17
Teachers at my child's school are interested in what I have to say	4.54	4.00	4.07	4.14	4.83	4.43	3.67
I feel like I am actively involved in my child's education	4.62	4.10	4.07	4.10	4.83	4.21	3.83
The district's school calendar meets the needs of my child and our family	4.54	4.00	4.33	4.07	4.83	3.93	3.33
Overall Middle Schools							
My child's school is a supportive and inviting place	4.13	4.25	4.24	4.29	4.30	4.28	4.14
My child is safe at school	4.04	4.18	4.30	4.21	4.07	4.22	3.93
I feel welcome at this school	4.07	4.33	4.22	4.31	4.19	4.31	4.23
I am satisfied with communication with my child's teacher(s)	3.80	4.03	4.05	4.04	4.13	4.06	4.00
My child is getting a good education at this school	3.93	4.19	4.18	4.19	4.24	4.20	4.19
My child is treated fairly at school	3.77	4.12	4.17	4.23	4.21	4.16	4.09
My child likes his/her teachers	3.77	4.13	4.17	4.10	4.09	4.01	4.00
At this school, there are good supports for all children, including children with learning disabilities	3.81	4.18	4.10	4.08	4.06	4.09	3.90
This school is a supportive and inviting place for parents/guardians	3.97	4.18	4.16	4.18	4.11	4.24	3.95
Adults at this school respect cultural diversity	3.85	4.10	4.10	4.26	4.07	4.24	4.19
Adults at this school have high expectations of my child	3.88	4.20	4.11	4.20	4.17	4.20	4.09
Teachers at my child's school are interested in what I have to say	3.96	4.20	4.12	4.12	4.08	4.15	4.16
I feel like I am actively involved in my child's education	4.36	4.22	4.19	4.21	4.32	4.15	4.07
The district's school calendar meets the needs of my child and our family	4.28	4.17	4.11	4.07	4.23	4.08	3.93
District							
My child's school is a supportive and inviting place	4.20	4.37	4.37	4.37	4.41	4.37	4.20
My child is safe at school	4.18	4.31	4.31	4.29	4.29	4.30	4.11
I feel welcome at this school	4.18	4.31	4.36	4.36	4.38	4.40	4.23
I am satisfied with communication with my child's teacher(s)	3.99	4.21	4.23	4.16	4.32	4.20	4.03
My child is getting a good education at this school	4.09	4.28	4.31	4.23	4.33	4.26	4.03
My child is treated fairly at school	3.94	4.21	4.24	4.29	4.30	4.24	4.08
My child likes his/her teachers	4.06	4.33	4.35	4.33	4.31	4.34	4.20
At this school, there are good supports for all children, including children with learning disabilities	3.90	4.19	4.23	4.11	4.24	4.18	3.97
This school is a supportive and inviting place for parents/guardians	4.05	4.21	4.29	4.26	4.31	4.31	4.05
Adults at this school respect cultural diversity	4.02	4.20	4.22	4.34	4.29	4.31	4.17
Adults at this school have high expectations of my child	4.05	4.24	4.21	4.21	4.26	4.20	3.94
Teachers at my child's school are interested in what I have to say	4.04	4.22	4.17	4.20	4.28	4.19	4.05
I feel like I am actively involved in my child's education	4.36	4.29	4.24	4.33	4.37	4.30	4.20
The district's school calendar meets the needs of my child and our family	4.18	4.19	4.16	4.06	4.21	4.02	3.66

Range is from a low of 1 to a high of 5