

Hanshew Middle School Overview

Statement of Program

Hanshew Middle School is situated in south Anchorage at the foot of the Chugach Mountains, and is attended by roughly 930 students in grades 7-8. Hanshew is home to a diverse population that represents many cultural heritages. The students learn from many opportunities provided, including a life-skills program, behavioral support, various levels of resource support, bilingual support, Indian Education and gifted education. Hanshew is also the site for the Alaska State School for the Deaf and Hard-of-Hearing's middle school students.

High performance in a safe school environment is the goal of the staff, students and parents of Hanshew. Students are challenged and supported in their endeavors to increase academic progress. A wide range of academic support is available and used to help with customizing instruction to the individual. Teachers and staff encourage parent involvement and communication. Numerous activities are available to help engage students in their school and learning.

From the School Report Card

School Goals	
Goal	Level of Achievement
The number of students rated proficient on the state math assessment will increase from 73 to 76 percent.	Not Attained
The number of students rated proficient on the state language arts assessment will increase from 81 to 84 percent.	Partially Attained

From the School Report Card

Budget*	
2006-07 Actual Expenditures	\$5,690,819
2007-08 Revised Budgeted Amount	\$6,169,006
2008-09 Proposed Budget	\$6,321,669

*Dollars budgeted or expended are general fund only
From IFAS

Hanshew Middle School Characteristics			
	School	District	Source of Information
Membership	827	48,858	Fall OASIS
Capacity	104.60%	N/A	2008-18 ASD Capital Improvement Plan
Attendance Rate	92.54%	92.83%	NCLB Summer Data Collection
Retention Rate K-8	0.00%	0.60%	SMS and NCLB Summer Data Collection
Transiency Rate	19.21%	26.07%	NCLB Summer Data Collection
Economically Disadvantaged	274	17,717	Fall OASIS
Average Weekly Volunteer Hours	40	4,660	Department of Education Report Card Report
Dropout Rate	0.12%	3.93%	NCLB Summer Data Collection & Fall Oasis
Students Taking the Alternate Assessment	7	228	SMS
Change in Enrollment	-8.72%	-0.76%	Fall Oasis

Teacher Qualification				
Number of Teachers	Percent Fully Licensed	Percent With Advanced Degrees	Number Nationally Board Certified	Percent of Classes Taught by "Highly Qualified Teachers"
60	100.00%	40.32%	1	85.57%

Hanshew Middle School Business Partnerships
Hairplay By Colors; Trendsetters School of Beauty; Cabin Fever Gifts; Saint Clair Dental Center

From the School Report Card

Ethnicity Report							
African-American/Black	Alaska Native/American Indian	Asian	Native Hawaiian/Other Pacific Islander	White	Hispanic	Multi-Ethnic	Total
48	89	83	17	388	83	119	827

From Fall Oasis

Full Academic Year		
Students Enrolled	Students Enrolled for FAY	Percent FAY
809	745	92.09%

From participation file (Grades 3-10)

Total Dropout Rate – Hanshew Middle School								
	African-American/Black	Alaska Native/American Indian	Asian	Native Hawaiian/Other Pacific Islander	White	Hispanic	Multi-Ethnic	Total
Enrollment	48	87	83	16	384	81	118	817
Final Dropouts	*	*	*	*	*	*	*	*
% of Dropouts	0.00%	1.15%	0.00%	0.00%	0.00%	0.00%	0.00%	0.12%

From NCLB Summer Data Collection and Fall OASIS

* Results cannot be published without releasing personally identifiable information based upon the EED reporting protocol

**Hanshew Middle School
2007-08 Adequate Yearly Progress
Status Report**

Does Not Meet AYP
Level 5 (Second Year)

AMO For Language Arts: 77.18%
AMO For Mathematics: 66.09%

Group	Participation Rate				"FAY" (D) Tested & Enrolled "FAY"	Language Arts Performance				Mathematics Performance			
	(A) Number Enrolled	(B) Number Tested	Participation Rate (%)	(C) Participation Rate Met		(E) Proficient on LA	(F) Percent Proficient on LA	(G) LA Target	(H) Met AMO for LA	(I) Proficient on Mathematics	(J) Percent Proficient in Mathematics	(K) Mathematics Target	(L) Met AMO for Mathematics
All Students	807	805	99.8%	Yes	741	588	79.4%	73.6%	Yes	539	72.7%	62%	Yes
AF AM	42	42	100%	Yes	38	28	73.7%	61.3%	Yes	22	57.9%	48.2%	Yes
AKNA/AI	94	93	98.9%	Yes	77	55	71.4%	66%	Yes	52	67.5%	53.5%	Yes
Asian/NH/OPI	100	100	100%	Yes	95	84	88.4%	67.1%	Yes	72	75.8%	54.8%	Yes
White	372	372	100%	Yes	350	289	82.6%	72%	Yes	277	79.1%	60.2%	Yes
Hispanic	83	82	98.8%	Yes	72	54	75%	65.7%	Yes	45	62.5%	53.1%	Yes
ME	116	116	100%	Yes	109	78	71.6%	67.8%	Yes	71	65.1%	55.5%	Yes
EDS	270	269	99.6%	Yes	231	148	64.1%	70.7%	No	138	59.7%	58.8%	Yes
SWD	148	148	100%	Yes	131	63	48.1%	68.6%	Yes-SH	57	43.5%	56.5%	Yes-SH
LEP	131	131	100%	Yes	120	96	80%	68.3%	Yes	81	67.5%	56%	Yes

Attendance Rate: Met

92.5% (Threshold is 85%)

N/A is used to indicate:

- (1) Subgroups with 20 or fewer students enrolled on the first day of testing shall not be included in participation rate calculation.
- (2) Subgroups with 25 or fewer students enrolled for the "full academic year" shall not have the performance score computed.

* For the groups where the number enrolled is less than or equal to 40, participation is met when no more than two miss the test. Groups can also meet this target using the average of the past two or three years.

** When a group achieves a "Yes" without meeting the listed target, it has done so using either the 99% confidence interval or Safe Harbor.

*** The results cannot be published without releasing personally identifiable information based upon the EED reporting protocol.

This document was prepared by the ASD Assessment and Evaluation Department.

7/10/2008

Hanshew Middle School
2007-08 Adequate Yearly Progress
Growth Report

The AYP growth reports are generated by the Alaska State Department of Education and Early Development. The reports can be found online at: http://www.asdk12.org/depts/assess_eval/AYP/State_AS_D_AYG_0708.pdf

SBA Proficiency Comparison by Grade for Hanshew Middle School																
	Reading Percent Proficient				Writing Percent Proficient				Mathematics Percent Proficient				Science* Percent Proficient			
	04-05	05-06	06-07	07-08	04-05	05-06	06-07	07-08	04-05	05-06	06-07	07-08	04-05	05-06	06-07	07-08
All Students	80.54%	82.96%	86.17%	83.02%	73.87%	78.91%	74.00%	72.04%	65.55%	72.47%	73.54%	70.94%	N/A	N/A	N/A	47.43%
Grade 7	79.88%	79.05%	85.65%	83.33%	74.54%	75.51%	73.38%	72.40%	68.16%	71.46%	74.27%	71.50%	N/A	N/A	N/A	N/A
Grade 8	81.25%	86.50%	86.71%	82.73%	73.16%	82.00%	74.65%	71.71%	62.80%	73.40%	72.77%	70.42%	N/A	N/A	N/A	47.43%

* 2007-08 was the first year Science was administered for grades 4, 8 and 10 on the SBA.

SBA Proficient & Not Proficient by NCLB Groups for Hanshew Middle School								
	Reading		Writing		Mathematics		Science	
	Percent Proficient	Percent Not Proficient	Percent Proficient	Percent Not Proficient	Percent Proficient	Percent Not Proficient	Percent Proficient	Percent Not Proficient
All Students	83.02%	16.98%	72.04%	27.96%	70.94%	29.06%	47.43%	52.57%
AF AM	84.62%	15.38%	58.97%	41.03%	58.97%	41.03%	40.91%	59.09%
AKNA/AI	74.44%	25.56%	56.18%	43.82%	61.11%	38.89%	34.48%	65.52%
Asian	96.30%	3.70%	86.42%	13.58%	82.93%	17.07%	58.54%	41.46%
NH/OPI	77.78%	22.22%	61.11%	38.89%	44.44%	55.56%	25.00%	75.00%
White	84.05%	15.95%	76.82%	23.18%	78.11%	21.89%	58.96%	41.04%
Hispanic	79.01%	20.99%	75.00%	25.00%	59.26%	40.74%	27.91%	72.09%
Multi-Ethnic	80.17%	19.83%	62.93%	37.07%	63.48%	36.52%	40.00%	60.00%
EDS	74.14%	25.86%	58.56%	41.44%	56.87%	43.13%	35.51%	64.49%
Non-EDS	87.41%	12.59%	78.72%	21.28%	77.86%	22.14%	53.51%	46.49%
SWD	46.73%	53.27%	33.33%	66.67%	33.02%	66.98%	15.25%	84.75%
Non-SWD	88.66%	11.34%	77.94%	22.06%	76.78%	23.22%	52.86%	47.14%
LEP	76.19%	23.81%	66.67%	33.33%	50.77%	49.23%	25.00%	75.00%
Not LEP	83.61%	16.39%	72.50%	27.50%	72.74%	27.26%	49.86%	50.14%
Migrant	75.68%	24.32%	64.86%	35.14%	62.16%	37.84%	40.00%	60.00%
Not Migrant	83.38%	16.62%	72.39%	27.61%	71.37%	28.63%	47.81%	52.19%
Female	88.14%	11.86%	80.86%	19.14%	72.58%	27.42%	49.47%	50.53%
Male	78.54%	21.46%	64.30%	35.70%	69.50%	30.50%	45.66%	54.34%

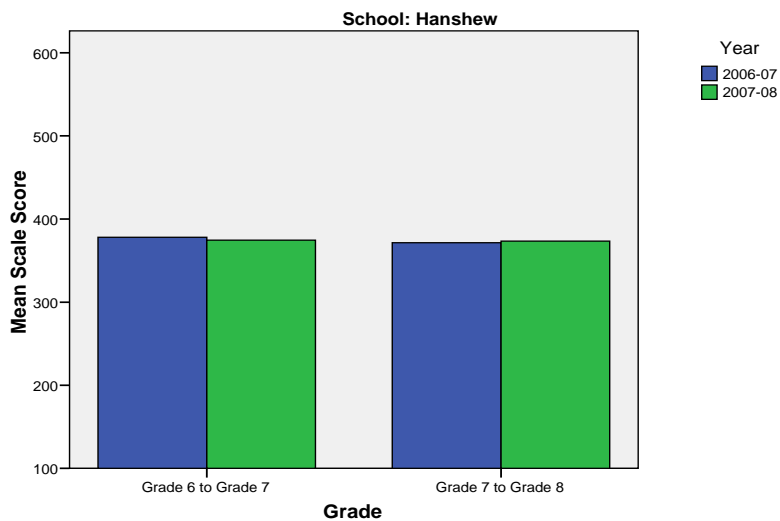
SBA Mean Scale Score Comparison by NCLB Groups for Hanshew Middle School								
	Reading		Writing		Mathematics		Science**	
	06-07	07-08	06-07	07-08	06-07	07-08	06-07	07-08
All Students	374.43	371.90	348.96	346.66	347.53	341.11	N/A	297.62
AF AM	354.49	354.23	327.79	333.21	318.93	319.21	N/A	274.64
AKNA/AI	344.21	343.31	314.74	316.25	320.08	316.83	N/A	273.72
Asian	384.08*	395.75	368.13*	380.22	369.79*	376.16	N/A	323.20
NH/OPI	N/A	338.22	N/A	309.00	N/A	308.56	N/A	272.17
White	386.81	383.42	360.08	355.54	355.88	352.81	N/A	314.23
Hispanic	366.08	359.83	339.65	340.63	341.87	322.69	N/A	279.00
ME	372.49	360.29	346.81	332.72	341.89	322.95	N/A	282.23
EDS	350.78	346.23	321.97	319.29	324.55	319.59	N/A	271.34
Non-EDS	387.40	384.60	363.90	360.23	360.31	351.69	N/A	311.00
SWD	299.75	307.21	268.24	273.98	270.38	279.24	N/A	242.86
Non-SWD	384.28	381.97	359.52	357.74	357.63	350.63	N/A	306.85
LEP	358.99	333.54	336.56	313.81	342.78	313.32	N/A	268.48
Not LEP	377.83	375.21	351.70	349.50	348.63	343.58	N/A	300.78
Migrant	335.70	351.97	301.95	323.59	317.90	314.11	N/A	267.45
Not Migrant	376.28	372.88	351.22	347.79	348.96	342.43	N/A	299.17
Female	382.69	382.68	365.26	364.16	348.52	341.99	N/A	299.34
Male	366.23	362.48	332.84	331.32	346.55	340.33	N/A	296.13

* Prior to 2007-08 the Asian category includes Native Hawaiian/Other Pacific Islander. In 2007-08 Native Hawaiian/Other Pacific Islander is a separate ethnic category.

** 2007-08 was the first year Science was administered for grades 4, 8 and 10 on the SBA.

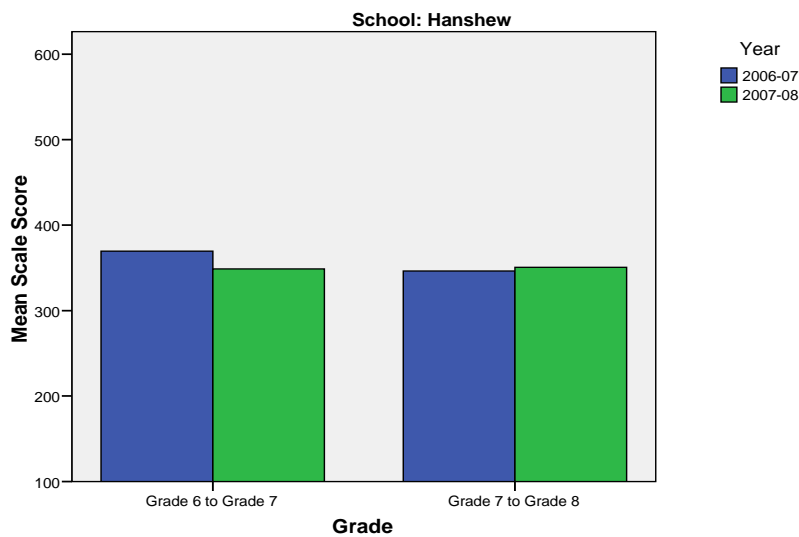
Hanshew Middle School SBA Change Average Scale Score by NCLB Groups: Reading						
	Average Scale Score of Students Tested in District Both Years			Average Scale Score of Students Tested in District Both Years		
	Grade 6-in 06-07	Grade 7 in 07-08	Difference	Grade 7-in 06-07	Grade 8 in 07-08	Difference
All Students	378.06	374.51	-3.55	371.58	373.39	1.82
African-American/Black	360.06	350.94	-9.12	362.90	361.33	-1.57
Alaska Native/American Indian	342.47	342.37	-0.10	347.98	351.31	3.33
Asian	386.34	387.43	1.09	395.19	412.44	17.25
Native Hawaiian/Other Pacific Islander	347.83	324.17	-23.67	321.73	344.27	22.55
White	393.01	388.01	-5.00	387.08	380.55	-6.53
Hispanic	364.43	358.77	-5.66	359.68	364.63	4.95
Multi-Ethnic (2 or More Races)	359.60	361.49	1.89	353.29	363.76	10.47
Economically Disadvantaged	356.44	350.32	-6.12	346.20	347.04	0.84
Non-Economically Disadvantaged	387.90	385.52	-2.38	383.67	385.94	2.28
Students with Disabilities	314.39	310.33	-4.07	301.39	310.00	8.61
Students without Disabilities	387.45	383.97	-3.47	382.62	383.37	0.75
LEP	307.00	322.94	15.94	322.66	337.47	14.81
Not LEP	381.60	377.08	-4.52	376.14	376.74	0.60
Migrant	360.56	362.81	2.25	336.90	347.85	10.95
Not Migrant	378.88	375.06	-3.82	373.53	374.83	1.30
Female	385.93	382.78	-3.16	382.99	385.54	2.55
Male	371.17	367.28	-3.89	361.37	362.53	1.16

Change in Mean Scale Score in SBA Reading by Grade Between 2006-07 and 2007-08



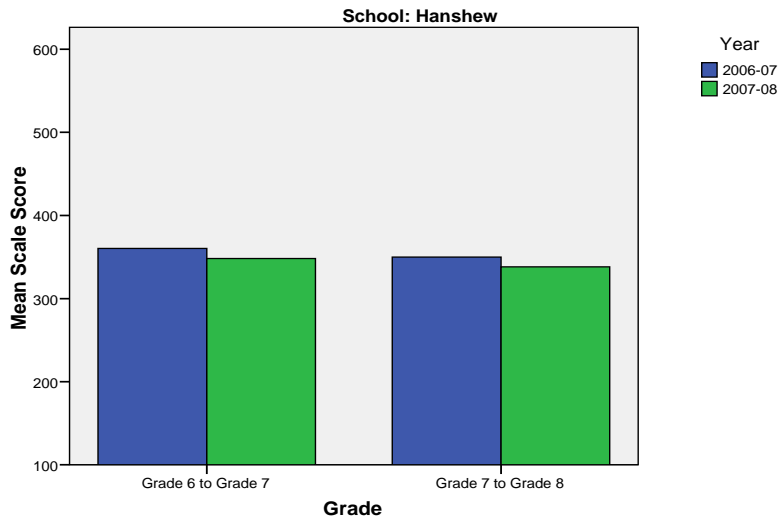
Hanshew Middle School SBA Change Average Scale Score by NCLB Groups: Writing						
	Average Scale Score of Students Tested in District Both Years			Average Scale Score of Students Tested in District Both Years		
	Grade 6-in 06-07	Grade 7 in 07-08	Difference	Grade 7-in 06-07	Grade 8 in 07-08	Difference
All Students	369.50	348.66	-20.84	346.41	350.59	4.18
African-American/Black	349.59	327.29	-22.29	339.57	343.14	3.57
Alaska Native/American Indian	328.47	315.70	-12.77	318.47	324.92	6.45
Asian	380.49	368.89	-11.60	390.33	400.08	9.75
Native Hawaiian/Other Pacific Islander	320.50	298.50	-22.00	306.18	314.82	8.64
White	385.31	358.59	-26.72	357.54	356.56	-0.98
Hispanic	356.26	347.74	-8.51	339.03	341.53	2.50
Multi-Ethnic (2 or More Races)	351.85	333.02	-18.83	325.64	340.40	14.75
Economically Disadvantaged	343.38	326.88	-16.50	319.57	321.38	1.81
Non-Economically Disadvantaged	381.39	358.58	-22.81	359.15	364.45	5.30
Students with Disabilities	302.96	279.50	-23.46	268.18	274.33	6.14
Students without Disabilities	379.31	358.86	-20.45	358.13	362.02	3.88
LEP	292.53	312.18	19.65	306.44	313.25	6.81
Not LEP	373.33	350.48	-22.85	350.13	354.06	3.93
Migrant	337.00	327.31	-9.69	315.90	323.85	7.95
Not Migrant	371.02	349.66	-21.36	348.12	352.09	3.97
Female	383.41	361.65	-21.76	367.20	370.73	3.53
Male	357.33	337.30	-20.03	327.72	332.48	4.76

Change in Mean Scale Score in SBA Writing by Grade between 2006-07 and 2007-08



Hanshew Middle School SBA Change Average Scale Score by NCLB Groups: Mathematics						
	Average Scale Score of Students Tested in District Both Years			Average Scale Score of Students Tested in District Both Years		
	Grade 6-in 06-07	Grade 7 in 07-08	Difference	Grade 7-in 06-07	Grade 8 in 07-08	Difference
All Students	360.27	348.16	-12.11	350.03	338.20	-11.83
African-American/Black	325.65	320.35	-5.29	335.57	321.95	-13.62
Alaska Native/American Indian	337.03	328.10	-8.93	325.35	318.96	-6.38
Asian	384.47	369.28	-15.19	391.75	382.70	-9.05
Native Hawaiian/Other Pacific Islander	330.67	298.83	-31.83	328.64	310.55	-18.09
White	371.25	360.99	-10.26	357.81	347.14	-10.66
Hispanic	348.06	327.43	-20.63	349.37	323.17	-26.20
Multi-Ethnic (2 or More Races)	341.83	329.34	-12.49	328.64	319.08	-9.56
Economically Disadvantaged	342.02	327.17	-14.85	327.84	316.93	-10.91
Non-Economically Disadvantaged	368.55	357.68	-10.87	360.56	348.30	-12.27
Students with Disabilities	306.67	295.39	-11.28	276.25	271.69	-4.57
Students without Disabilities	368.15	355.92	-12.23	361.61	348.64	-12.97
LEP	319.35	303.76	-15.59	331.92	313.78	-18.14
Not LEP	362.31	350.37	-11.94	352.01	340.87	-11.14
Migrant	333.31	318.25	-15.06	331.15	315.65	-15.50
Not Migrant	361.53	349.56	-11.97	351.10	339.47	-11.62
Female	356.77	345.14	-11.63	353.59	341.88	-11.71
Male	363.32	350.79	-12.53	346.87	334.93	-11.94

Change in Mean Scale Score in SBA Mathematics by Grade between 2006-07 and 2007-08



Reading: SBA Results Compared for Hanshew Middle School, District and State Grades 7 and 8															
	% Advanced Proficient			% Proficient			% Below Proficient			% Far Below Proficient			% Tested		
	School	District	State	School	District	State	School	District	State	School	District	State	School	District	State
All Students	34.97%	36.46%	34.57%	48.05%	48.69%	48.62%	13.96%	11.55%	12.88%	3.02%	3.29%	3.93%	98.51%	97.85%	97.86%
AF AM	28.21%	19.00%	20.66%	56.41%	58.30%	57.93%	*	17.03%	15.72%	*	5.68%	5.69%	92.86%	97.86%	98.38%
AKNA/AI	18.89%	19.97%	15.19%	55.56%	52.76%	51.58%	20.00%	20.94%	25.14%	5.56%	6.33%	8.08%	95.74%	95.36%	96.93%
Asian	54.32%	28.61%	27.53%	41.98%	54.01%	53.96%	*	13.72%	14.90%	*	3.65%	3.60%	98.78%	97.58%	97.49%
NH/OPI	*	8.40%	N/A	72.22%	53.78%	N/A	22.22%	28.57%	N/A	*	9.24%	N/A	100.00%	98.76%	N/A
White	41.08%	47.51%	45.02%	42.97%	43.41%	45.22%	13.24%	7.25%	7.53%	2.70%	1.83%	2.22%	99.46%	98.46%	98.29%
Hispanic	24.69%	27.54%	28.38%	54.32%	55.39%	54.32%	16.05%	13.17%	13.31%	4.94%	3.89%	3.98%	97.59%	97.80%	98.00%
ME	28.45%	30.61%	32.24%	51.72%	52.80%	52.18%	16.38%	12.80%	12.02%	3.45%	3.78%	3.56%	100.00%	97.04%	97.23%
EDS	20.53%	18.54%	20.30%	53.61%	54.95%	51.97%	22.43%	20.04%	20.88%	3.42%	6.47%	6.84%	97.41%	96.31%	95.86%
Not EDS	42.11%	46.21%	43.42%	45.30%	45.29%	46.55%	9.77%	6.93%	7.91%	2.82%	1.57%	2.12%	99.07%	98.71%	99.14%
SWD	5.61%	5.65%	5.39%	41.12%	39.65%	39.16%	40.19%	37.65%	36.10%	13.08%	17.06%	19.35%	93.86%	90.81%	92.10%
Non SWD	39.53%	40.59%	38.46%	49.13%	49.91%	49.89%	9.88%	8.05%	9.78%	1.45%	1.45%	1.87%	99.28%	98.88%	98.68%
LEP	11.11%	4.34%	3.40%	65.08%	52.25%	45.68%	17.46%	31.74%	37.23%	6.35%	11.68%	13.69%	95.45%	95.57%	96.43%
Not LEP	37.02%	39.75%	38.87%	46.58%	48.33%	49.03%	13.66%	9.49%	9.52%	2.73%	2.44%	2.58%	98.79%	98.09%	98.06%
Migrant	24.32%	23.05%	18.13%	51.35%	50.51%	49.19%	16.22%	20.34%	25.53%	8.11%	6.10%	7.15%	97.37%	98.33%	98.16%
Not Migrant	35.49%	37.03%	35.71%	47.89%	48.62%	48.58%	13.85%	11.18%	12.00%	2.77%	3.17%	3.71%	98.57%	97.83%	97.84%
Female	41.24%	39.92%	38.60%	46.90%	49.13%	48.79%	9.70%	8.92%	10.13%	2.16%	2.04%	2.48%	98.67%	98.14%	98.03%
Male	29.48%	33.21%	30.74%	49.06%	48.29%	48.47%	17.69%	14.03%	15.49%	3.77%	4.48%	5.30%	98.38%	97.58%	97.70%

* Results cannot be published without releasing personally identifiable information based upon the EED reporting protocol

Writing: SBA Results Compared for Hanshew Middle School, District and State Grades 7 and 8															
	% Advanced Proficient			% Proficient			% Below Proficient			% Far Below Proficient			% Tested		
	School	District	State	School	District	State	School	District	State	School	District	State	School	District	State
All Students	10.71%	11.86%	10.41%	61.34%	62.70%	61.09%	20.65%	18.67%	20.92%	7.30%	6.77%	7.58%	98.39%	97.97%	97.77%
AF AM	7.69%	4.39%	4.97%	51.28%	57.68%	58.58%	33.33%	28.29%	27.26%	7.69%	9.65%	9.19%	92.86%	97.44%	97.79%
AKNA/AI	*	3.72%	2.85%	*	50.89%	46.57%	32.58%	31.02%	34.58%	11.24%	14.38%	15.99%	94.68%	95.82%	97.09%
Asian	22.22%	9.18%	8.28%	64.20%	62.10%	62.39%	*	21.87%	22.29%	*	6.85%	7.04%	98.78%	97.72%	97.64%
NH/OPI	*	*	N/A	61.11%	*	N/A	27.78%	33.47%	N/A	*	16.74%	N/A	100.00%	99.17%	N/A
White	12.94%	16.21%	14.37%	63.88%	66.42%	66.50%	15.90%	13.35%	14.89%	7.28%	4.01%	4.25%	99.73%	98.59%	98.10%
Hispanic	10.00%	10.06%	8.18%	65.00%	61.71%	63.88%	18.75%	19.97%	21.03%	6.25%	8.26%	6.91%	96.39%	97.51%	97.81%
ME	6.03%	9.36%	9.88%	56.90%	62.82%	62.78%	28.45%	20.05%	20.12%	8.62%	7.78%	7.21%	100.00%	97.40%	97.23%
EDS	5.70%	3.77%	4.20%	52.85%	54.85%	53.45%	27.38%	28.17%	29.69%	14.07%	13.20%	12.66%	97.41%	96.69%	95.78%
Not EDS	13.18%	16.27%	14.27%	65.54%	66.98%	65.82%	17.33%	13.48%	15.47%	3.95%	3.26%	4.43%	98.88%	98.69%	99.05%
SWD	*	0.94%	0.72%	*	26.86%	25.75%	43.81%	42.99%	44.66%	22.86%	29.21%	28.86%	92.11%	90.71%	91.85%
Non SWD	12.34%	13.31%	11.70%	65.60%	67.49%	65.79%	17.13%	15.42%	17.76%	4.93%	3.78%	4.75%	99.42%	99.03%	98.62%
LEP	*	1.05%	0.57%	*	38.02%	31.72%	22.22%	41.62%	45.08%	11.11%	19.31%	22.63%	95.45%	95.57%	96.60%
Not LEP	11.63%	12.96%	11.78%	60.88%	65.22%	65.15%	20.52%	16.33%	17.58%	6.98%	5.49%	5.50%	98.65%	98.23%	97.94%
Migrant	*	4.38%	3.57%	*	55.56%	48.98%	18.92%	27.95%	33.31%	16.22%	12.12%	14.13%	97.37%	99.00%	98.24%
Not Migrant	10.96%	12.18%	10.89%	61.43%	63.00%	61.93%	20.74%	18.27%	20.06%	6.87%	6.55%	7.12%	98.44%	97.93%	97.74%
Female	12.94%	16.61%	14.82%	67.92%	65.43%	64.82%	14.56%	14.21%	16.01%	4.58%	3.75%	4.35%	98.67%	98.42%	98.00%
Male	8.75%	7.37%	6.23%	55.56%	60.12%	57.53%	26.00%	22.88%	25.59%	9.69%	9.63%	10.65%	98.14%	97.55%	97.56%

* Results cannot be published without releasing personally identifiable information based upon the EED reporting protocol

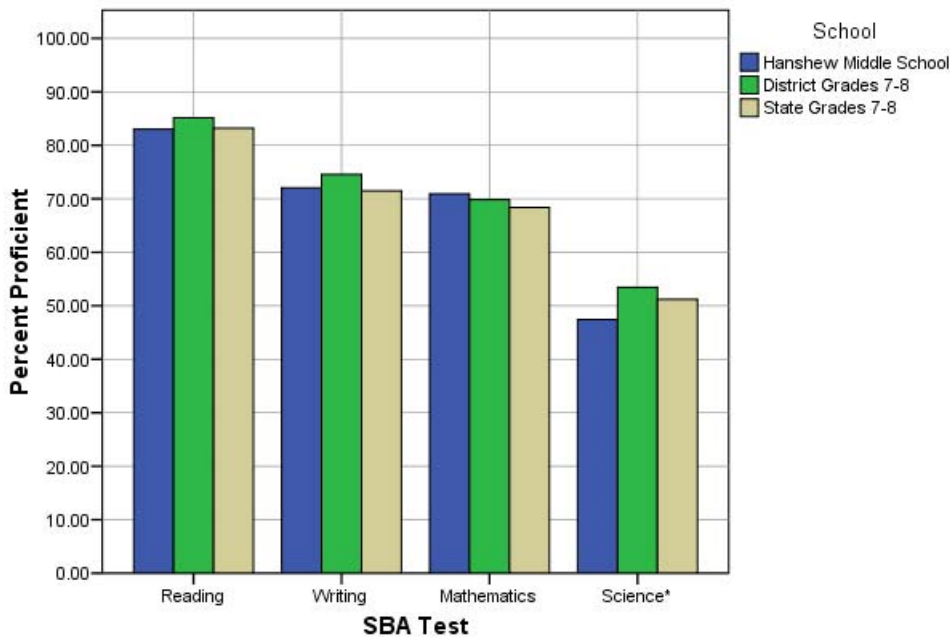
Mathematics: SBA Results Compared for Hanshew Middle School, District and State Grades 7 and 8															
	% Advanced Proficient			% Proficient			% Below Proficient			% Far Below Proficient			% Tested		
	School	District	State	School	District	State	School	District	State	School	District	State	School	District	State
All Students	28.55%	31.33%	29.02%	42.39%	38.49%	39.36%	18.87%	17.87%	18.72%	10.19%	12.31%	12.90%	98.51%	97.81%	97.73%
AF AM	15.38%	12.58%	14.65%	43.59%	35.54%	36.40%	28.21%	28.26%	26.44%	12.82%	23.62%	22.51%	92.86%	96.79%	97.50%
AKNA/AI	13.33%	17.89%	14.46%	47.78%	34.80%	35.46%	25.56%	25.04%	26.44%	13.33%	22.28%	23.64%	95.74%	95.20%	96.77%
Asian	50.00%	29.58%	27.87%	32.93%	40.26%	40.20%	*	18.76%	18.72%	*	11.40%	13.21%	100.00%	98.72%	98.64%
NH/OPI	*	6.67%	N/A	38.89%	35.42%	N/A	50.00%	26.67%	N/A	*	31.25%	N/A	100.00%	99.59%	N/A
White	35.14%	40.28%	36.66%	42.97%	38.52%	40.75%	13.78%	13.95%	14.82%	8.11%	7.25%	7.77%	99.46%	98.19%	98.00%
Hispanic	20.99%	22.65%	22.24%	38.27%	40.98%	41.68%	25.93%	21.61%	22.44%	14.81%	14.75%	13.64%	97.59%	98.24%	98.48%
ME	17.39%	27.20%	28.57%	46.09%	40.12%	39.73%	20.00%	18.05%	18.13%	16.52%	14.63%	13.57%	99.14%	97.04%	96.97%
EDS	18.70%	15.55%	16.77%	38.17%	37.90%	38.20%	28.24%	24.48%	24.34%	14.89%	22.08%	20.69%	97.04%	96.54%	95.81%
Not EDS	33.40%	39.96%	36.63%	44.47%	38.82%	40.08%	14.26%	14.26%	15.23%	7.88%	6.97%	8.06%	99.26%	98.52%	98.96%
SWD	8.49%	5.81%	5.39%	24.53%	20.26%	22.07%	26.42%	26.66%	28.40%	40.57%	47.27%	44.13%	92.98%	90.17%	92.02%
Non SWD	31.64%	34.73%	32.17%	45.14%	40.92%	41.67%	17.71%	16.70%	17.43%	5.52%	7.66%	8.73%	99.42%	98.92%	98.54%
LEP	12.31%	5.73%	4.98%	38.46%	30.10%	27.54%	33.85%	32.01%	32.96%	15.38%	32.16%	34.52%	98.48%	97.42%	97.06%
Not LEP	30.00%	34.01%	32.36%	42.74%	39.37%	41.00%	17.53%	16.39%	16.74%	9.73%	10.23%	9.89%	98.52%	97.85%	97.82%
Migrant	10.81%	17.29%	17.58%	51.35%	40.68%	36.29%	18.92%	22.37%	25.14%	18.92%	19.66%	20.99%	97.37%	98.33%	98.08%
Not Migrant	29.42%	31.93%	29.81%	41.95%	38.40%	39.57%	18.87%	17.68%	18.28%	9.76%	11.99%	12.34%	98.57%	97.79%	97.70%
Female	28.76%	30.98%	28.90%	43.82%	39.19%	40.85%	18.55%	18.89%	19.04%	8.87%	10.94%	11.22%	98.94%	98.31%	98.00%
Male	28.37%	31.67%	29.13%	41.13%	37.83%	37.94%	19.15%	16.90%	18.42%	11.35%	13.60%	14.50%	98.14%	97.34%	97.46%

* Results cannot be published without releasing personally identifiable information based upon the EED reporting protocol

Science: SBA Results Compared for Hanshew Middle School, District and State Grade 8															
	% Advanced Proficient			% Proficient			% Below Proficient			% Far Below Proficient			% Tested		
	School	District	State	School	District	State	School	District	State	School	District	State	School	District	State
All Students	17.36%	27.02%	25.2%	30.07%	26.43%	26.0%	23.96%	20.65%	21.3%	28.61%	25.90%	27.4%	97.85%	96.39%	94.91%
AF AM	13.64%	10.34%	10.7%	27.27%	19.40%	21.1%	13.64%	25.43%	26.1%	45.45%	44.83%	42.1%	91.67%	96.27%	94.36%
AKNA/AI	8.62%	10.33%	8.9%	25.86%	25.84%	18.0%	20.69%	21.88%	23.7%	44.83%	41.95%	49.4%	95.08%	93.47%	93.67%
Asian	21.95%	16.86%	16.1%	36.59%	22.00%	23.2%	34.15%	26.57%	25.5%	7.32%	34.57%	35.2%	100.00%	97.77%	97.29%
NH/OPI	*	6.42%	N/A	*	11.93%	N/A	33.33%	17.43%	N/A	41.67%	64.22%	N/A	100.00%	99.09%	N/A
White	22.54%	38.15%	35.1%	36.42%	29.71%	30.0%	20.81%	17.80%	19.0%	20.23%	14.34%	15.9%	98.86%	96.75%	95.14%
Hispanic	9.30%	16.57%	15.8%	18.60%	25.60%	27.5%	37.21%	27.11%	26.3%	34.88%	30.72%	30.4%	95.56%	96.79%	95.92%
ME	16.67%	21.93%	23.0%	23.33%	24.28%	24.2%	21.67%	20.37%	20.9%	38.33%	33.42%	31.9%	100.00%	95.04%	93.83%
EDS	7.25%	10.38%	12.3%	28.26%	21.96%	21.1%	21.01%	22.76%	22.7%	43.48%	44.89%	43.9%	95.17%	94.85%	93.13%
Not EDS	22.51%	35.95%	33.1%	31.00%	28.83%	29.0%	25.46%	19.52%	20.5%	21.03%	15.70%	17.4%	99.27%	97.25%	96.02%
SWD	*	4.72%	4.3%	*	11.32%	9.4%	18.64%	20.28%	18.8%	66.10%	63.68%	67.5%	92.19%	89.45%	89.82%
Non SWD	20.29%	30.01%	28.0%	32.57%	28.46%	28.2%	24.86%	20.70%	21.6%	22.29%	20.83%	22.1%	98.87%	97.41%	95.62%
LEP	7.50%	2.59%	1.7%	17.50%	7.78%	6.0%	35.00%	21.90%	18.4%	40.00%	67.72%	73.5%	100.00%	98.02%	94.82%
Not LEP	18.43%	29.64%	28.5%	31.44%	28.43%	28.8%	22.76%	20.52%	21.7%	27.37%	21.42%	21.0%	97.62%	96.22%	94.92%
Migrant	*	13.46%	11.5%	*	28.85%	20.9%	15.00%	19.87%	20.2%	45.00%	37.82%	47.4%	90.91%	93.41%	95.03%
Not Migrant	17.99%	27.63%	26.2%	29.82%	26.32%	26.4%	24.42%	20.69%	21.4%	27.76%	25.36%	26.1%	98.23%	96.54%	94.90%
Female	15.26%	25.67%	23.7%	34.21%	26.30%	27.0%	25.79%	22.06%	22.4%	24.74%	25.96%	27.0%	97.94%	96.89%	95.23%
Male	19.18%	28.29%	26.8%	26.48%	26.55%	25.1%	22.37%	19.31%	20.3%	31.96%	25.84%	27.8%	97.77%	95.93%	94.60%

* Results cannot be published without releasing personally identifiable information based upon the EED reporting protocol

2007-08 SBA Results Compared for Hanshew Middle School, District and State

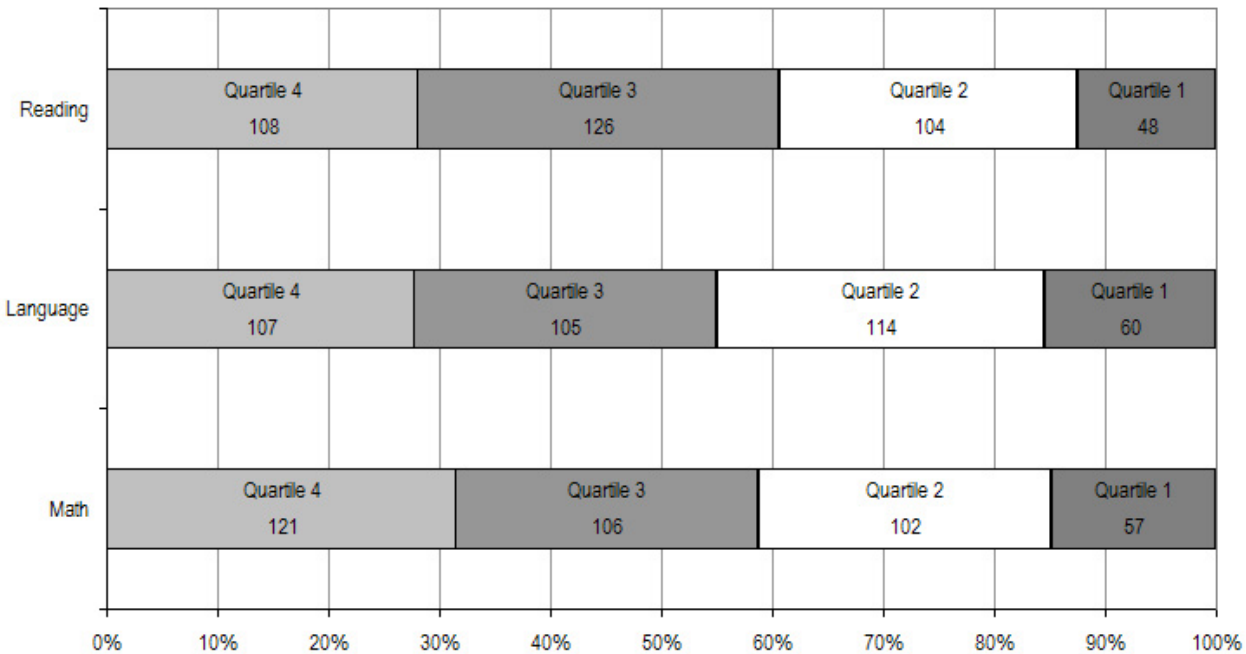


* 2007-08 was the first year Science was administered for grades 4, 8 and 10 on the SBA.

Hanshew Middle School TerraNova Grade 7 Percent in Each Quartile								
Reading	Above Average		Average				Below Average	
	4th Quartile (76-99 percentile)		3rd Quartile (51-75 percentile)		2nd Quartile (26-50 percentile)		1st Quartile (1-25 percentile)	
	School	District	School	District	School	District	School	District
07-08	27.98%	30.31%	32.64%	32.50%	26.94%	24.54%	12.44%	12.66%
06-07	27.6%	35.6%	33.5%	28.0%	24.7%	21.5%	14.2%	14.9%
05-06	25.1%	34.6%	34.1%	28.4%	27.8%	21.8%	13.0%	15.3%
04-05	30.9%	33.9%	27.0%	27.1%	28.0%	21.7%	14.0%	17.4%
03-04	27.9%	35.0%	29.9%	28.2%	24.4%	21.4%	17.8%	15.3%
Language								
07-08	27.72%	30.26%	27.20%	29.23%	29.53%	25.08%	15.54%	15.43%
06-07	33.1%	35.4%	30.2%	28.7%	23.9%	21.5%	12.8%	14.3%
05-06	27.4%	34.9%	34.8%	28.4%	23.8%	21.4%	13.9%	15.3%
04-05	32.3%	34.4%	30.9%	28.2%	23.0%	20.5%	13.8%	16.9%
03-04	30.9%	35.3%	28.1%	28.5%	25.3%	21.7%	15.8%	14.5%
Mathematics								
07-08	31.35%	32.27%	27.46%	26.81%	26.42%	24.16%	14.77%	16.76%
06-07	30.6%	31.5%	28.4%	28.3%	24.2%	23.0%	16.8%	17.2%
05-06	28.7%	31.4%	29.0%	27.8%	27.8%	23.4%	14.5%	17.4%
04-05	29.7%	29.7%	27.4%	26.4%	26.6%	22.9%	16.3%	20.9%
03-04	26.8%	30.2%	26.6%	27.6%	25.8%	23.9%	20.8%	18.4%

The double bold line indicates a change from the TerraNova 2nd edition to the TerraNova 3rd edition.

2007-08 TerraNova 3rd Edition Grade 7 Percent and Count of Students in Each Quartile for Hanshew Middle School



Climate Survey Results for Hanshew Middle School

The Anchorage School District administered the School Climate and Connectedness Surveys in spring 2008 to students in grades 5-12, all school staff and parents/guardians of students in grades K-12. The surveys were done to provide schools with information about perceptions and experiences related to school climate for use in setting school goals and redirecting resources. In the spring of 2008 grades 3 and 4 students were involved in a pilot survey for measuring school climate and connectedness. The results are currently under review by the American Institutes for Research.

Respondents were asked to answer a series of questions that were related to a certain concept. For each item, there were five options from which to choose a response. The answer options ranged from strongly disagree (1) to strongly agree (5).

Student Survey Response Rate – Grades 5-12 Survey			
	Hanshew Middle School	Overall Middle Schools	District**
# Surveys Completed	618	5,722	21,629
# Reportable Surveys	520	5,021	18,508
# Students Enrolled*	820	7,188	28,945
Reportable Response Rate	63.41%	69.85%	63.94%

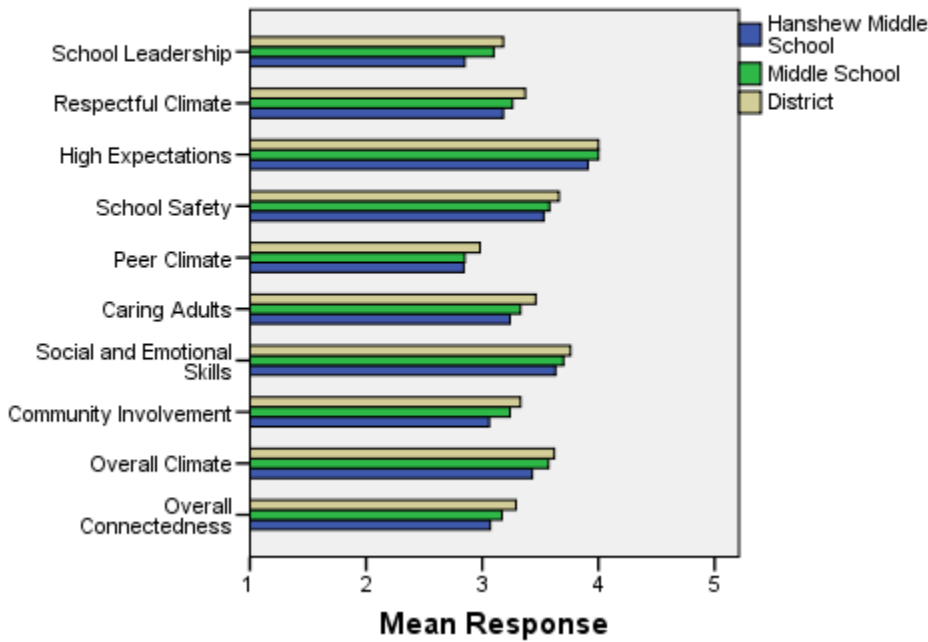
*Number enrolled as of April 1, 2008

**District data does not include KCC responses

Each question in the survey related to a factor or concept, and a score was calculated based on the mean response for the questions related to each factor. The factors measured in the survey were:

- **School Leadership and Student Involvement:** This factor reflects students' feelings about the decision making of school leaders as well as student participation in the school governance. Students selected responses between 1 and 5 where 1 indicates a low level of school leadership and student involvement and 5 indicates a high level of school leadership and student involvement.
- **Respectful Climate:** This factor reflects students' feelings about fairness of rules and respect for students' contributions. Students selected responses between 1 and 5 where 1 indicates a lack of a respectful climate and 5 indicates a highly respectful climate for students.
- **High Expectations:** This factor reflects students' feelings about their own expectations as well as those of adults in their school and community. Students selected responses between 1 and 5 where 1 indicates a lack of high expectations and 5 indicates a high level of high expectations.
- **School Safety:** This factor reflects students' feelings about bullies and gangs at school as well as general crime and violence in the community. Students selected responses between 1 and 5 where 1 indicates a low level of school safety and 5 indicates a high level of school safety.
- **Peer Climate:** This factor reflects students' feelings about how respectful students are to one another and how helpful students are to other students. Students selected responses between 1 and 5 where 1 indicates a more negative peer climate and 5 indicates a very positive peer climate at the school.
- **Caring Adults:** This factor reflects students' feelings about how close they feel to adults in the school. Students selected responses between 1 and 5 where 1 indicates a lack of caring adult relationships and 5 indicates strong caring adult relationships at the school.
- **Social and Emotional Learning:** This factor reflects students' ability to think about the consequences of their actions and to empathize with others. Students selected responses between 1 and 5 where 1 indicates that students at the school perceive themselves as having poorer social and emotional learning, and 5 indicates higher levels of social and emotional learning.
- **Community Involvement:** This factor reflects students' feelings about how supportive and welcoming the school is with parents and the community. Students selected responses between 1 and 5 where 1 indicates a less supportive and welcoming environment and 5 indicates a more supportive and welcoming environment.
- **Overall Climate:** The overall climate score was computed as the mean of three scales: school leadership, high expectations and school safety.
- **Overall Connectedness:** Overall connectedness score was computed as a mean of four scales: respectful climate, peer climate, caring adults and community involvement.

Climate and Connectedness Student Survey - Hanshew



Student Survey Mean Response by Factors Related to School Climate - Overall District			
	Hanshew Middle School	Overall Middle Schools	District
School Leadership	2.85	3.10	3.18
Respectful Climate	3.18	3.26	3.37
High Expectations	3.91	4.00	4.00
School Safety	3.53	3.58	3.66
Peer Climate	2.84	2.85	2.98
Caring Adults	3.24	3.33	3.46
Social and Emotional Skills	3.63	3.70	3.76
Community Involvement	3.06	3.24	3.33
Overall Climate	3.43	3.57	3.62
Overall Connectedness	3.07	3.17	3.29

Range is from a low of 1 to a high of 5

Students were also asked to answer questions related to school danger. The following table provides the responses for those questions:

Student Survey Results of the School Danger Questions - Percent of Students Responding in Each Category					
	0 Times	1-2 Times	3-6 Times	7-12 Times	> 12 Times
Hanshew Middle School					
Under the influence of drugs?	60.23%	15.59%	8.58%	3.31%	12.28%
Under the influence of alcohol?	56.34%	23.00%	6.82%	4.09%	9.75%
Destroy things (vandalism)?	38.34%	27.47%	17.00%	5.53%	11.66%
Get into fights?	20.08%	31.19%	29.24%	7.99%	11.50%
Steal things?	36.35%	26.72%	13.16%	10.61%	13.16%
Threaten or bully?	25.00%	26.37%	19.73%	11.72%	17.19%
Under the influence of inhalants?	66.67%	14.60%	6.31%	2.76%	9.66%
Carry weapons?	72.27%	15.23%	4.69%	2.34%	5.47%
Overall Middle Schools					
Under the influence of drugs?	64.66%	18.15%	7.88%	2.73%	6.57%
Under the influence of alcohol?	68.04%	16.94%	6.71%	3.34%	4.97%
Destroy things (vandalism)?	37.30%	30.56%	16.24%	7.13%	8.77%
Get into fights?	23.45%	34.39%	22.40%	8.21%	11.55%
Steal things?	40.02%	27.06%	14.98%	8.34%	9.60%
Threaten or bully?	28.58%	25.86%	17.04%	10.29%	18.23%
Under the influence of inhalants?	67.97%	15.45%	6.70%	3.13%	6.76%
Carry weapons?	68.29%	21.26%	4.76%	1.95%	3.75%
District					
Under the influence of drugs?	60.45%	15.05%	9.54%	3.92%	11.04%
Under the influence of alcohol?	63.11%	16.37%	8.90%	4.43%	7.19%
Destroy things (vandalism)?	41.26%	29.47%	15.45%	5.88%	7.94%
Get into fights?	26.40%	35.20%	21.96%	7.11%	9.33%
Steal things?	44.80%	25.68%	13.81%	6.98%	8.74%
Threaten or bully?	32.21%	26.21%	16.68%	9.27%	15.63%
Under the influence of inhalants?	72.79%	14.21%	5.66%	2.48%	4.87%
Carry weapons?	69.45%	19.15%	5.34%	2.01%	4.06%

Student Survey Results of the Mean Factor Score by Ethnicity (Self-Reported)							
	AKNA/AI	AF AM	Hispanic	Asian/NH	White	Other	Multi-Ethnic
Hanshew Middle School							
School Leadership	3.05	2.81	2.83	2.99	2.78	3.02	2.73
Respectful Climate	3.24	3.02	3.05	3.16	3.21	3.30	3.16
High Expectations	3.98	4.02	3.91	3.91	3.90	3.79	3.91
School Safety	3.53	3.48	3.66	3.33	3.56	3.63	3.60
Peer Climate	2.98	2.84	2.93	2.80	2.84	2.80	2.75
Caring Adults	3.43	2.92	3.14	3.11	3.29	3.23	3.26
Social and Emotional Skills	3.63	3.56	3.64	3.72	3.67	3.56	3.57
Community Involvement	3.18	3.03	2.98	3.02	3.07	3.14	3.07
Overall Climate	3.52	3.49	3.46	3.41	3.39	3.46	3.44
Overall Connectedness	3.21	2.88	3.05	3.02	3.09	3.10	3.07
Overall Middle Schools							
School Leadership	3.26	2.96	3.09	3.21	3.08	3.16	3.01
Respectful Climate	3.38	3.00	3.26	3.30	3.31	3.24	3.14
High Expectations	3.98	3.87	3.96	4.02	4.04	3.97	3.94
School Safety	3.51	3.42	3.51	3.40	3.72	3.39	3.56
Peer Climate	2.93	2.69	2.79	2.95	2.86	2.80	2.82
Caring Adults	3.38	3.23	3.24	3.24	3.40	3.31	3.28
Social and Emotional Skills	3.67	3.54	3.68	3.75	3.75	3.67	3.61
Community Involvement	3.30	3.10	3.20	3.23	3.28	3.23	3.18
Overall Climate	3.58	3.43	3.54	3.55	3.62	3.52	3.52
Overall Connectedness	3.23	2.99	3.13	3.18	3.21	3.15	3.11
District							
School Leadership	3.33	3.14	3.19	3.28	3.14	3.17	3.15
Respectful Climate	3.48	3.18	3.32	3.39	3.39	3.37	3.33
High Expectations	3.98	3.94	3.96	4.02	4.02	4.00	4.01
School Safety	3.60	3.48	3.55	3.47	3.78	3.51	3.62
Peer Climate	3.01	2.85	2.94	3.05	3.00	2.92	2.93
Caring Adults	3.49	3.43	3.37	3.33	3.51	3.42	3.46
Social and Emotional Skills	3.73	3.66	3.73	3.81	3.78	3.75	3.74
Community Involvement	3.37	3.22	3.31	3.29	3.34	3.34	3.31
Overall Climate	3.64	3.52	3.57	3.59	3.65	3.56	3.60
Overall Connectedness	3.33	3.17	3.24	3.26	3.31	3.26	3.27

Staff Survey Response Rate			
	Hanshew Middle School	Overall Middle Schools	District**
# Surveys Completed	54	522	2,980
# Reportable Surveys	53	521	2,968
# Staff Members*	96	789	5,549
Reportable Response Rate	55.21%	66.03%	53.49%

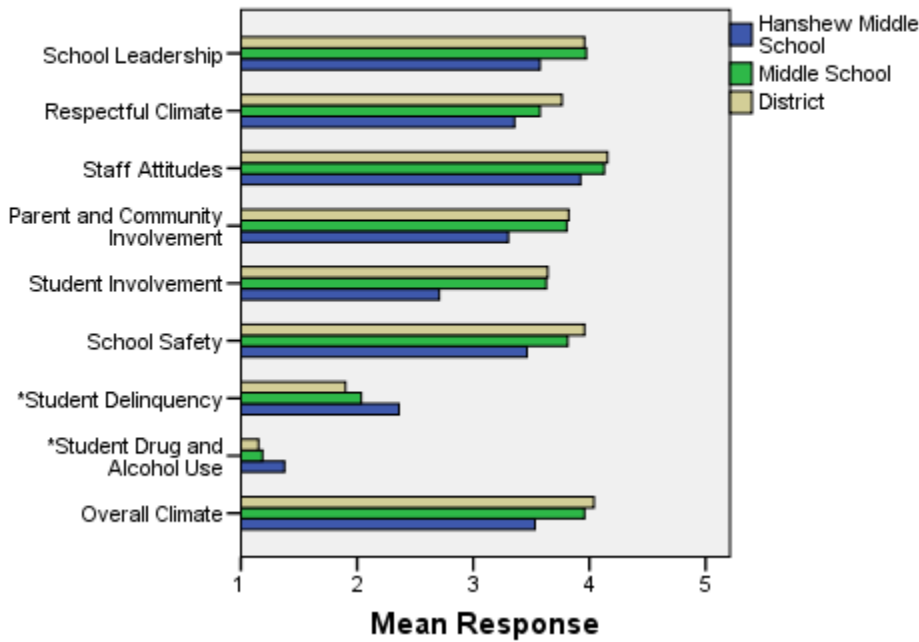
*Number staff as of April 1, 2008

**Includes KCC responses

Each question in the survey related to a factor or concept, and a score was calculated based on the mean response for the questions related to each factor. The factors were:

- **School Leadership:** This factor reflects staff members' feelings about the decision making of school leaders as well as the fairness of school rules. Staff members selected responses between 1 and 5 where 1 indicates a low level of school leadership and 5 indicates a high level of school leadership.
- **Respectful Climate:** This factor reflects staff members' feelings about how students treat each other and how well students and staff members treat one another. Staff members selected responses between 1 and 5 where 1 indicates a low level of respect and 5 indicates a high level.
- **Staff Attitudes:** This scale reflects staff members' feelings about the competence of teachers as well as how positive their attitudes are towards their jobs. Staff members selected responses between 1 and 5 where 1 indicates more negative staff attitudes and 5 indicates highly positive staff attitudes.
- **Parent and Community Involvement:** This factor reflects staff members' feelings about how accessible the school is for parents as well as how connected adults in the community are to the school. Staff members selected responses between 1 and 5 where 1 indicates a low level of parent and community involvement and 5 indicates a high level of parent and community involvement.
- **Student Involvement:** This factor reflects staff members' feeling about how involved students are in the decision making process. Staff members selected responses between 1 and 5 where 1 indicates a low level of student involvement and 5 indicates a high level of student involvement.
- **School Safety:** This factor reflects staff members' feelings about the impact of gangs and bullies as well as general crime and violence in the community. Staff members selected responses between 1 and 5 where 1 indicates a low level school safety and 5 indicates a high level of school safety.
- **Student Delinquency:** This factor uses staff members' reports of observing students getting into fights, stealing and bullying. The student delinquency and student drug and alcohol use scales differ from the other factors since the higher the score is the more negative the response. Staff members selected responses between 1 and 5 where 1 indicates a low level of student delinquency and 5 indicates a high level of student delinquency.
- **Student Drug and Alcohol Use:** This factor uses staff members' reports of observing students under the influence of drugs or alcohol. The student delinquency and student drug and alcohol use scales differ from the other factors since the higher the score is the more negative the response. Staff members selected responses between 1 and 5 where 1 indicates a low level of student drug and alcohol use and 5 indicates a high level of student drug and alcohol use.
- **Overall Climate:** Computed as the mean of 8 scales: school leadership, respectful climate, staff attitudes, parent and community involvement, student involvement, school safety, student delinquency, and drug and alcohol use scores.

Climate and Connectedness Staff Survey - Hanshew



Staff Survey Mean Response by Factors Related to School Climate - Overall District			
	Hanshew Middle School	Overall Middle Schools	District
School Leadership	3.57	3.97	3.96
Respectful Climate	3.36	3.57	3.76
Staff Attitudes	3.92	4.13	4.16
Parent & Community Involvement	3.30	3.81	3.82
Student Involvement	2.71	3.63	3.64
School Safety	3.46	3.81	3.96
Student Delinquency*	2.36	2.04	1.90
Student Drug & Alcohol Use*	1.38	1.19	1.15
Overall Climate	3.53	3.96	4.04

Range is from a low of 1 to a high of 5

*Student Drug and Alcohol Use and Student Delinquency factor scale scores differ from other factors since the higher the score is the more negative the response.

Staff members were also asked to answer questions related to school danger. The following table provides the responses for those questions:

Staff Survey Results of the School Danger Questions - Percent of Staff Responding in Each Category					
	0 Times	1-2 Times	3-6 Times	7-12 Times	> 12 Times
Hanshew Middle School					
Under the influence of drugs?	70.83%	16.67%	8.33%	2.08%	2.08%
Under the influence of alcohol?	58.33%	33.33%	4.17%	2.08%	2.08%
Destroy things (vandalism)?	20.83%	31.25%	27.08%	10.42%	10.42%
Get into fights?	18.75%	47.92%	18.75%	10.42%	4.17%
Steal things?	14.89%	44.68%	21.28%	12.77%	6.38%
Threaten or bully?	2.08%	35.42%	27.08%	18.75%	16.67%
Under the influence of inhalants?	95.83%	2.08%	0.00%	2.08%	0.00%
Carry weapons?	87.50%	10.42%	0.00%	2.08%	0.00%
Overall Middle Schools					
Under the influence of drugs?	78.08%	15.88%	3.80%	1.57%	0.67%
Under the influence of alcohol?	83.94%	14.03%	1.36%	0.45%	0.23%
Destroy things (vandalism)?	26.97%	41.57%	19.33%	7.87%	4.27%
Get into fights?	31.99%	38.03%	19.02%	6.49%	4.47%
Steal things?	37.75%	37.53%	16.18%	3.60%	4.94%
Threaten or bully?	14.64%	36.26%	25.68%	12.61%	10.81%
Under the influence of inhalants?	95.02%	4.07%	0.45%	0.23%	0.23%
Carry weapons?	83.75%	14.67%	0.90%	0.23%	0.45%
District					
Under the influence of drugs?	82.61%	11.54%	4.11%	1.19%	0.55%
Under the influence of alcohol?	86.69%	10.21%	2.34%	0.60%	0.16%
Destroy things (vandalism)?	38.03%	36.81%	16.05%	5.07%	4.04%
Get into fights?	35.38%	38.78%	16.46%	4.83%	4.55%
Steal things?	41.82%	37.07%	14.02%	4.28%	2.81%
Threaten or bully?	22.88%	37.15%	21.97%	8.96%	9.04%
Under the influence of inhalants?	97.27%	2.42%	0.24%	0.04%	0.04%
Carry weapons?	88.47%	10.26%	1.11%	0.08%	0.08%

Staff Survey Results of the Mean Factor Score by Ethnicity (Self-Reported)						
	AKNA/AI	AF AM	Hispanic	Asian/NH	White	Multi-Ethnic
Hanshew Middle School						
School Leadership	3.00	***	***	***	3.53	4.29
Respectful Climate	2.40	***	***	***	3.35	3.80
Staff Attitudes	3.20	***	***	***	3.91	4.20
Parent and Community Involvement	2.43	***	***	***	3.27	3.76
Student Involvement	2.33	***	***	***	2.71	2.78
School Safety	1.40	***	***	***	3.47	3.67
* Student Delinquency	3.20	2.80	***	***	2.34	2.20
* Student Drug and Alcohol Use	1.67	1.00	***	***	1.40	1.11
Overall Climate	2.74	***	***	***	3.52	4.01
Overall Middle Schools						
School Leadership	3.71	3.94	4.09	4.28	3.98	4.15
Respectful Climate	3.45	3.60	3.76	3.68	3.57	3.65
Staff Attitudes	3.88	4.03	4.20	4.18	4.13	4.24
Parent and Community Involvement	3.49	3.95	3.96	4.06	3.80	3.87
Student Involvement	3.31	3.70	4.22	4.10	3.61	3.63
School Safety	3.63	3.71	3.80	3.82	3.82	3.80
* Student Delinquency	2.11	2.67	1.60	1.92	2.03	2.03
* Student Drug and Alcohol Use	1.07	1.40	1.03	1.04	1.19	1.15
Overall Climate	3.63	3.90	4.13	4.11	3.96	4.08
District						
School Leadership	3.99	3.99	4.13	4.15	3.96	4.06
Respectful Climate	3.66	3.83	3.84	3.96	3.76	3.84
Staff Attitudes	4.06	4.11	4.27	4.22	4.16	4.29
Parent and Community Involvement	3.75	3.91	3.94	3.93	3.82	3.85
Student Involvement	3.62	3.67	3.85	3.88	3.64	3.72
School Safety	3.82	3.94	4.06	3.94	3.97	3.94
* Student Delinquency	1.88	1.90	1.67	1.61	1.91	2.05
* Student Drug and Alcohol Use	1.12	1.26	1.03	1.16	1.15	1.13
Overall Climate	3.96	4.04	4.20	4.18	4.04	4.09

*Student Drug and Alcohol Use and Student Delinquency factor scale scores differ from other factors since the higher the score is the more negative the response.

**Staff survey results do not include an 'Other' ethnicity category since staff in that category all chose at least one other ethnicity in addition to 'Other' and were included in the 'Multi-Ethnic' category as a result.

***Results can not be calculated because of missing responses

Parent/Guardian Survey Response Rate			
	Hanshew Middle School	Overall Middle Schools	District**
# Surveys Completed	131	1,648	7,415
# Primary Guardians*	823	7,219	48,693
Response Rate	15.92%	22.83%	15.23%

*Number students enrolled as of April 1, 2008 without dual guardians included

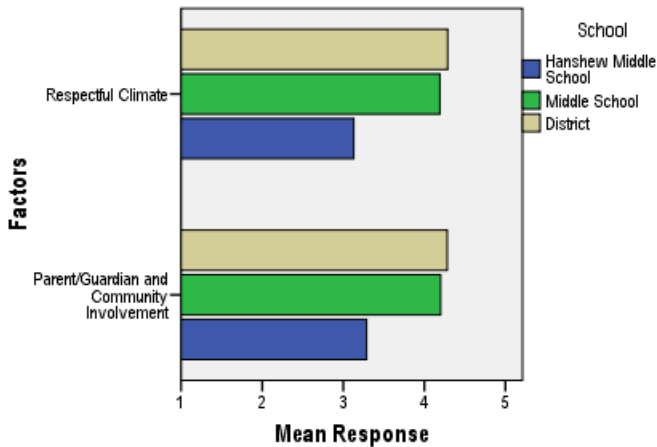
**District data

- 1) does not include KCC responses;
- 2) does include responses without a school designation

Two factors are calculated from the Parent/Guardian Survey. All results other than the factor scores below are reported by individual question: questions in the graphs are condensed phrases from the full question, while questions in the tables are the full question.

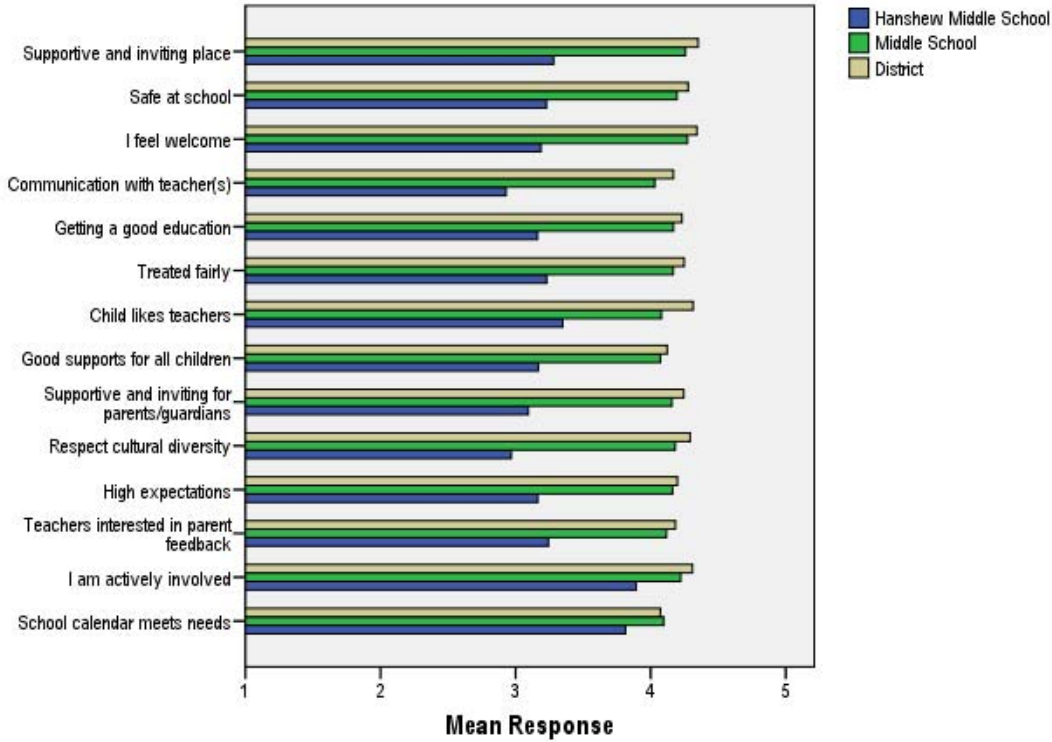
- **Respectful Climate:** This factor is calculated by determining the mean of five questions: 1) My child's school is a supportive and inviting place, 2) I feel welcome at this school, 3) I am satisfied with communication with my child's teacher(s), 4) This school is a supportive and inviting place for parents/guardians and 5) Adults at this school respect cultural diversity.
- **Parent/Guardian and Community Involvement:** This factor is calculated by determining the mean of five questions: 1) I feel welcome at this school, 2) This school is a supportive and inviting place for parents/guardians, 3) Adults at this school respect cultural diversity, 4) Teacher's at my child's school are interested in what I have to say and 5) I feel like I am actively involved in my child's education.

Parent/Guardian Survey Mean Factor Scores (Range is from a low of 1 to a high of 5)



Parent/Guardian Factor Scores			
	Hanshew Middle School	Overall Middle Schools	District
Respectful Climate	3.13	4.19	4.29
Parent/Guardian and Community Involvement	3.29	4.20	4.28

Climate and Connectedness Parent/Guardian Survey - Hanshew



Parent/Guardian Mean Response by Questions Related to School Climate - Overall			
	Hanshew Middle School	Overall Middle Schools	District
My child's school is a supportive and inviting place	3.28	4.26	4.35
My child is safe at school	3.23	4.19	4.28
I feel welcome at this school	3.19	4.27	4.34
I am satisfied with communication with my child's teacher(s)	2.93	4.03	4.17
My child is getting a good education at this school	3.16	4.17	4.23
My child is treated fairly at school	3.23	4.17	4.25
My child likes his/her teachers	3.35	4.08	4.31
At this school, there are good supports for all children, including children with learning disabilities	3.17	4.07	4.12
This school is a supportive and inviting place for parents/guardians	3.09	4.16	4.24
Adults at this school respect cultural diversity	2.97	4.18	4.29
Adults at this school have high expectations of my child	3.16	4.16	4.20
Teachers at my child's school are interested in what I have to say	3.24	4.12	4.18
I feel like I am actively involved in my child's education	3.89	4.22	4.31
The district's school calendar meets the needs of my child and our family	3.81	4.10	4.07

Range is from a low of 1 to a high of 5

Parent/Guardian Mean Response by Questions Related to School Climate by Ethnicity (Self-Reported)							
Hanshew Middle School	AF AM	AKNA/AI	Asian/NH	White	Hispanic	ME	Other
My child's school is a supportive and inviting place	2.53	3.29	2.76	3.83	2.91	4.00	3.67
My child is safe at school	2.47	2.92	3.00	3.85	2.55	3.38	3.00
I feel welcome at this school	2.11	3.21	2.72	3.82	2.73	4.13	3.67
I am satisfied with communication with my child's teacher(s)	1.71	2.79	2.35	3.71	2.45	3.88	3.33
My child is getting a good education at this school	2.33	3.07	2.65	3.74	2.64	4.00	4.00
My child is treated fairly at school	2.22	3.07	2.71	3.89	2.60	3.88	4.33
My child likes his/her teachers	2.67	3.29	2.72	3.87	2.91	3.75	4.33
At this school, there are good supports for all children, including children with learning disabilities	2.28	3.14	2.92	3.72	2.55	3.75	3.50
This school is a supportive and inviting place for parents/guardians	2.35	3.00	2.60	3.72	2.45	3.88	3.00
Adults at this school respect cultural diversity	1.59	2.64	2.27	4.02	2.18	4.00	4.00
Adults at this school have high expectations of my child	2.00	3.14	2.54	3.87	2.55	4.00	4.00
Teachers at my child's school are interested in what I have to say	2.29	3.50	2.80	3.80	2.55	3.75	4.00
I feel like I am actively involved in my child's education	4.12	3.86	3.65	3.91	4.09	3.88	4.00
The district's school calendar meets the needs of my child and our family	4.00	3.71	3.44	3.89	3.73	4.13	4.67
Overall Middle Schools							
My child's school is a supportive and inviting place	4.13	4.25	4.24	4.29	4.30	4.28	4.14
My child is safe at school	4.04	4.18	4.30	4.21	4.07	4.22	3.93
I feel welcome at this school	4.07	4.33	4.22	4.31	4.19	4.31	4.23
I am satisfied with communication with my child's teacher(s)	3.80	4.03	4.05	4.04	4.13	4.06	4.00
My child is getting a good education at this school	3.93	4.19	4.18	4.19	4.24	4.20	4.19
My child is treated fairly at school	3.77	4.12	4.17	4.23	4.21	4.16	4.09
My child likes his/her teachers	3.77	4.13	4.17	4.10	4.09	4.01	4.00
At this school, there are good supports for all children, including children with learning disabilities	3.81	4.18	4.10	4.08	4.06	4.09	3.90
This school is a supportive and inviting place for parents/guardians	3.97	4.18	4.16	4.18	4.11	4.24	3.95
Adults at this school respect cultural diversity	3.85	4.10	4.10	4.26	4.07	4.24	4.19
Adults at this school have high expectations of my child	3.88	4.20	4.11	4.20	4.17	4.20	4.09
Teachers at my child's school are interested in what I have to say	3.96	4.20	4.12	4.12	4.08	4.15	4.16
I feel like I am actively involved in my child's education	4.36	4.22	4.19	4.21	4.32	4.15	4.07
The district's school calendar meets the needs of my child and our family	4.28	4.17	4.11	4.07	4.23	4.08	3.93
District							
My child's school is a supportive and inviting place	4.20	4.37	4.37	4.37	4.41	4.37	4.20
My child is safe at school	4.18	4.31	4.31	4.29	4.29	4.30	4.11
I feel welcome at this school	4.18	4.31	4.36	4.36	4.38	4.40	4.23
I am satisfied with communication with my child's teacher(s)	3.99	4.21	4.23	4.16	4.32	4.20	4.03
My child is getting a good education at this school	4.09	4.28	4.31	4.23	4.33	4.26	4.03
My child is treated fairly at school	3.94	4.21	4.24	4.29	4.30	4.24	4.08
My child likes his/her teachers	4.06	4.33	4.35	4.33	4.31	4.34	4.20
At this school, there are good supports for all children, including children with learning disabilities	3.90	4.19	4.23	4.11	4.24	4.18	3.97
This school is a supportive and inviting place for parents/guardians	4.05	4.21	4.29	4.26	4.31	4.31	4.05
Adults at this school respect cultural diversity	4.02	4.20	4.22	4.34	4.29	4.31	4.17
Adults at this school have high expectations of my child	4.05	4.24	4.21	4.21	4.26	4.20	3.94
Teachers at my child's school are interested in what I have to say	4.04	4.22	4.17	4.20	4.28	4.19	4.05
I feel like I am actively involved in my child's education	4.36	4.29	4.24	4.33	4.37	4.30	4.20
The district's school calendar meets the needs of my child and our family	4.18	4.19	4.16	4.06	4.21	4.02	3.66

Range is from a low of 1 to a high of 5