

### Huffman Elementary School Overview

#### Statement of Program

Huffman Elementary is a neighborhood school that provides a complete and well- rounded education for children from preschool-sixth grade in a traditional setting. Huffman has an excellent academic program that supports the growth of our students in a safe and caring learning environment.

A strong focus on the individual child is evident through the various activities offered at Huffman. The PTA and staff are dedicated to providing personal development activities for students in areas such as music enrichment, community service projects and athletics to include running, skiing and skating.

The Huffman staff strive to provide a balanced program that adheres to academic standards, includes high expectations, ensures that students are challenged and offers opportunities for students to participate in extra-curricular activities.

From the School Report Card

School Goals	
Goal	Level of Achievement
Student performance on the state reading assessment will improve with 10 percent of students in grades 4-6 rated below or far below proficient moving to the proficient level.	Attained
Student performance on the state math assessment will improve with 10 percent of students in grades 4-6 rated below or far below proficient moving to the proficient level. –	Not Attained

From the School Report Card

Budget*	
2006-07 Actual Expenditures	\$2,178,172
2007-08 Revised Budgeted Amount	\$2,468,153
2008-09 Proposed Budget	\$2,512,933

\*Dollars budgeted or expended are general fund only  
From IFAS

Huffman Elementary School Characteristics			
	School	District	Source of Information
Membership	385	48,858	Fall OASIS
Capacity	81.07%	N/A	2008-18 ASD Capital Improvement Plan
Attendance Rate	94.25%	92.83%	NCLB Summer Data Collection
Retention Rate K-8	0.27%	0.60%	SMS and NCLB Summer Data Collection
Transiency Rate	15.68%	26.07%	NCLB Summer Data Collection
Economically Disadvantaged	36	17,717	Fall OASIS
Average Weekly Volunteer Hours	30	4,660	Department of Education Report Card Report
Students Taking the Alternate Assessment	0	228	SMS
Change in Enrollment	-0.52%	-0.76%	Fall Oasis

Teacher Qualification				
Number of Teachers	Percent Fully Licensed	Percent With Advanced Degrees	Number Nationally Board Certified	Percent of Classes Taught by "Highly Qualified Teachers"
32	100.00%	46.87%	0	100.00%

Huffman Elementary School Business Partnerships
Northrim Bank; Trinity Presbyterian Church

From the School Report Card

Ethnicity Report							
African-American/Black	Alaska Native/American Indian	Asian	Native Hawaiian/Other Pacific Islander	White	Hispanic	Multi-Ethnic	Total
7	18	25	1	274	25	35	385

From Fall Oasis

Full Academic Year		
Students Enrolled	Students Enrolled for FAY	Percent FAY
390	363	93.08%

From participation file (Grades 3-10)

Huffman Elementary School  
2007-08 Adequate Yearly Progress  
Status Report

Does Not Meet AYP  
Level 1

AMO For Language Arts: 77.18%  
AMO For Mathematics: 66.09%

Group	Participation Rate				"FAY" (D) Tested & Enrolled "FAY"	Language Arts Performance				Mathematics Performance			
	(A) Number Enrolled	(B) Number Tested	Participation Rate (%)	(C) Participation Rate Met		(E) Proficient on LA	(F) Percent Proficient on LA	(G) LA Target	(H) Met AMO for LA	(I) Proficient on Mathematics	(J) Percent Proficient in Mathematics	(K) Mathematics Target	(L) Met AMO for Mathematics
All Students	227	226	99.6%	Yes	213	189	88.7%	70.5%	Yes	182	85.4%	58.5%	Yes
AF AM	<5	<5	N/A	N/A	N/A	N/A	N/A	N/A	N/A	N/A	N/A	N/A	N/A
AKNA/AI	10	10	N/A	N/A	N/A	N/A	N/A	N/A	N/A	N/A	N/A	N/A	N/A
Asian/NH/OPI	14	14	N/A	N/A	N/A	N/A	N/A	N/A	N/A	N/A	N/A	N/A	N/A
White	168	168	100%	Yes	157	145	92.4%	69.4%	Yes	144	91.7%	57.3%	Yes
Hispanic	12	12	N/A	N/A	N/A	N/A	N/A	N/A	N/A	N/A	N/A	N/A	N/A
ME	19	18	N/A	N/A	N/A	N/A	N/A	N/A	N/A	N/A	N/A	N/A	N/A
EDS	16	16	N/A	N/A	N/A	N/A	N/A	N/A	N/A	N/A	N/A	N/A	N/A
SWD	37	36	97.3%	Yes	36	20	55.6%	60.9%	No	19	52.8%	47.7%	Yes
LEP	20	20	N/A	N/A	N/A	N/A	N/A	N/A	N/A	N/A	N/A	N/A	N/A

Attendance Rate: Met

94.3% (Threshold is 85%)

N/A is used to indicate:

- (1) Subgroups with 20 or fewer students enrolled on the first day of testing shall not be included in participation rate calculation.
- (2) Subgroups with 25 or fewer students enrolled for the "full academic year" shall not have the performance score computed.

\* For the groups where the number enrolled is less than or equal to 40, participation is met when no more than two miss the test. Groups can also meet this target using the average of the past two or three years.

\*\* When a group achieves a "Yes" without meeting the listed target, it has done so using either the 99% confidence interval or Safe Harbor.

\*\*\* The results cannot be published without releasing personally identifiable information based upon the EED reporting protocol.

This document was prepared by the ASD Assessment and Evaluation Department.

7/10/2008

Huffman Elementary School  
2007-08 Adequate Yearly Progress  
Growth Report

The AYP growth reports are generated by the Alaska State Department of Education and Early Development. The reports can be found online at: [http://www.asdk12.org/depts/assess\\_eval/AYP/State\\_AS\\_D\\_AYG\\_0708.pdf](http://www.asdk12.org/depts/assess_eval/AYP/State_AS_D_AYG_0708.pdf)

SBA Proficiency Comparison by Grade for Huffman Elementary School																
	Reading Percent Proficient				Writing Percent Proficient				Mathematics Percent Proficient				Science* Percent Proficient			
	04-05	05-06	06-07	07-08	04-05	05-06	06-07	07-08	04-05	05-06	06-07	07-08	04-05	05-06	06-07	07-08
All Students	94.07%	92.06%	94.49%	94.67%	92.59%	91.67%	92.34%	87.56%	90.41%	90.91%	92.34%	85.84%	N/A	N/A	N/A	61.43%
Grade 3	95% or more	84.75%	90.77%	95% or more	89.80%	79.66%	93.75%	88.64%	95% or more	86.67%	93.75%	93.18%	N/A	N/A	N/A	N/A
Grade 4	94.29%	95% or more	92.45%	92.75%	94.29%	95% or more	90.57%	85.71%	90.00%	90.91%	88.68%	81.43%	N/A	N/A	N/A	61.43%
Grade 5	95% or more	91.89%	95% or more	94.55%	93.75%	95% or more	88.46%	88.89%	92.31%	91.89%	92.31%	80.00%	N/A	N/A	N/A	N/A
Grade 6	90.80%	95.31%	95% or more	95% or more	91.95%	90.63%	95.45%	87.72%	85.06%	93.75%	93.94%	91.23%	N/A	N/A	N/A	N/A

\* 2007-08 was the first year Science was administered for grades 4, 8 and 10 on the SBA.

SBA Proficient & Not Proficient by NCLB Groups for Huffman Elementary School								
	Reading		Writing		Mathematics		Science**	
	Percent Proficient	Percent Not Proficient	Percent Proficient	Percent Not Proficient	Percent Proficient	Percent Not Proficient	Percent Proficient	Percent Not Proficient
All Students	94.67%	5.33%	87.56%	12.44%	85.84%	14.16%	61.43%	38.57%
AF AM	*	*	*	*	*	*	*	*
AKNA/AI	80% or more	20% or fewer	40.00%	60.00%	50.00%	50.00%	*	*
Asian	80% or more	20% or fewer	76.92%	23.08%	76.92%	23.08%	*	*
NH/OPI	*	*	*	*	*	*	*	*
White	95.81%	4.19%	93.41%	6.59%	91.67%	8.33%	66.67%	33.33%
Hispanic	80% or more	20% or fewer	66.67%	33.33%	58.33%	41.67%	*	*
ME	80% or more	20% or fewer	77.78%	22.22%	72.22%	27.78%	33.33%	66.67%
EDS	80% or more	20% or fewer	81.25%	18.75%	81.25%	18.75%	40% or more	60% or fewer
Non-EDS	94.74%	5.26%	88.04%	11.96%	86.19%	13.81%	59.38%	40.63%
SWD	64.00%	36.00%	38.46%	61.54%	50.00%	50.00%	36.36%	63.64%
Non-SWD	98.50%	1.50%	93.97%	6.03%	90.50%	9.50%	66.10%	33.90%
LEP	*	*	40% or fewer	60% or more	40% or fewer	60% or more	*	*
Not LEP	95.48%	4.52%	89.09%	10.91%	87.33%	12.67%	63.24%	36.76%
Migrant	60% or more	40% or fewer	60% or more	40% or fewer	60% or more	40% or fewer	*	*
Not Migrant	94.55%	5.45%	87.73%	12.27%	85.52%	14.48%	60.29%	39.71%
Female	96.74%	3.26%	94.57%	5.43%	86.96%	13.04%	72.73%	27.27%
Male	93.23%	6.77%	82.71%	17.29%	85.07%	14.93%	56.25%	43.75%

\* Results cannot be published without releasing personally identifiable information based upon the EED reporting protocol

\*\* 2007-08 was the first year Science was administered for grades 4, 8 and 10 on the SBA.

SBA Mean Scale Score Comparison by NCLB Groups for Huffman Elementary School								
	Reading		Writing		Mathematics		Science***	
	06-07	07-08	06-07	07-08	06-07	07-08	06-07	07-08
All Students	411.06	402.70	414.18	394.01	402.88	390.09	N/A	315.99
AF AM	397.00	*	445.67	*	420.67	*	N/A	*
AKNA/AI	349.18	346.20	332.73	290.90	368.27	315.70	N/A	*
Asian**	397.31	362.62	401.31	365.00	381.31	374.85	N/A	*
NH/OPI**	N/A	*	N/A	*	N/A	*	N/A	*
White	417.94	413.76	421.37	408.37	409.32	404.89	N/A	321.43
Hispanic	*	377.33	*	345.83	*	323.83	N/A	*
ME	411.62	366.72	417.62	351.67	393.08	341.78	N/A	282.22
EDS	372.18	397.00	376.43	387.19	376.11	382.38	N/A	348.33
Non-EDS	416.29	403.14	419.29	394.54	406.50	390.68	N/A	312.95
SWD	342.21	320.28	329.61	300.35	328.25	298.31	N/A	264.18
Non-SWD	420.70	413.01	425.62	406.25	412.98	402.03	N/A	325.64
LEP	394.05	274.00	382.82	255.40	384.32	261.60	N/A	*
Not LEP	412.80	405.03	417.42	397.16	404.80	393.00	N/A	320.07
Migrant	367.40	392.80	369.40	381.80	370.60	398.40	N/A	*
Not Migrant	412.00	402.93	415.16	394.29	403.58	389.90	N/A	314.53
Female	424.34	417.04	432.75	417.82	399.82	397.67	N/A	332.55
Male	402.72	392.78	402.45	377.55	404.81	384.89	N/A	308.40

\* Results cannot be published without releasing personally identifiable information based upon the EED reporting protocol

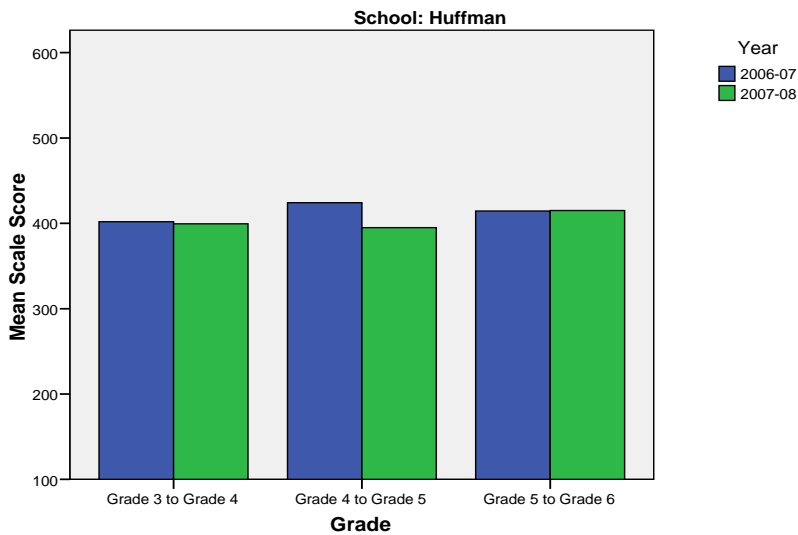
\*\* Prior to 2007-08 the Asian category includes Native Hawaiian/Other Pacific Islander. In 2007-08 Native Hawaiian/Other Pacific Islander is a separate ethnic category.

\*\*\* 2007-08 was the first year Science was administered for grades 4, 8 and 10 on the SBA.

Huffman Elementary School SBA Change Average Scale Score by NCLB Groups: Reading									
	Average Scale Score of Students Tested in District Both Years			Average Scale Score of Students Tested in District Both Years			Average Scale Score of Students Tested in District Both Years		
	Grade 3 in 06-07	Grade 4 in 07-08	Difference	Grade 4-in 06-07	Grade 5 in 07-08	Difference	Grade 5-in 06-07	Grade 6 in 07-08	Difference
All Students	401.78	399.32	-2.46	424.18	395.00	-29.18	414.31	414.94	0.63
AF AM	*	*	*	*	*	*	*	*	*
AKNA/AI	*	*	*	*	*	*	*	*	*
Asian	*	*	*	*	*	*	409.40	391.40	-18.00
NH/OPI	*	*	*	*	*	*	*	*	*
White	408.46	408.59	0.13	435.34	404.79	-30.55	428.38	431.82	3.44
Hispanic	*	*	*	*	*	*	*	*	*
ME	382.56	356.22	-26.33	*	*	*	379.83	393.67	13.83
EDS	418.83	417.83	-1.00	*	*	*	*	*	*
Non-EDS	400.05	397.44	-2.61	428.02	398.11	-29.91	412.69	414.61	1.92
SWD	351.44	333.89	-17.56	*	*	*	*	*	*
Non-SWD	409.88	409.84	-0.04	435.53	403.18	-32.36	420.57	423.55	2.98
LEP	*	*	*	*	*	*	*	*	*
Not LEP	403.59	400.86	-2.73	424.18	395.00	-29.18	417.78	418.90	1.12
Migrant	*	*	*	*	*	*	*	*	*
Not Migrant	401.87	398.52	-3.35	424.18	395.00	-29.18	414.36	415.66	1.30
Female	419.05	423.05	4.00	428.32	401.64	-26.68	430.95	418.95	-12.00
Male	392.95	387.19	-5.77	419.88	388.08	-31.79	403.58	412.35	8.77

\* Results cannot be published without releasing personally identifiable information based upon the EED reporting protocol

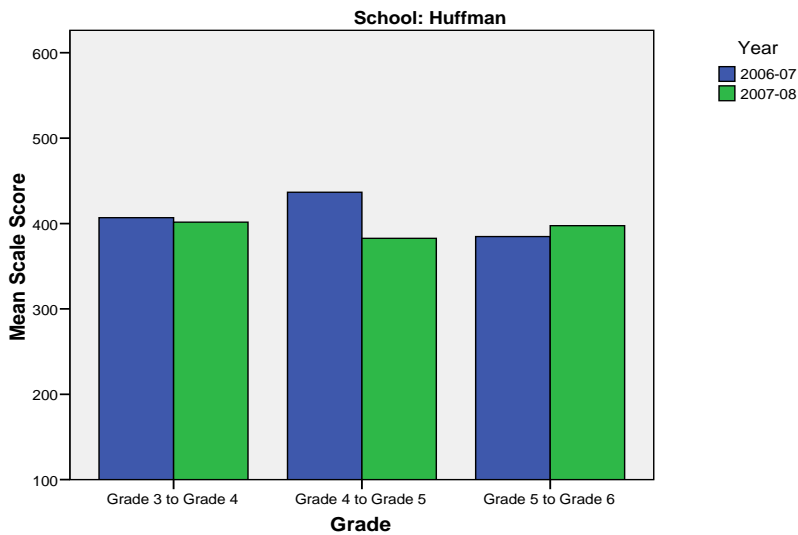
**Change in Mean Scale Score in SBA Reading by Grade Between 2006-07 and 2007-08**



Huffman Elementary School SBA Change Average Scale Score by NCLB Groups: Writing									
	Average Scale Score of Students Tested in District Both Years			Average Scale Score of Students Tested in District Both Years			Average Scale Score of Students Tested in District Both Years		
	Grade 3 in 06-07	Grade 4 in 07-08	Difference	Grade 4- in 06-07	Grade 5 in 07-08	Difference	Grade 5- in 06-07	Grade 6 in 07-08	Difference
All Students	406.82	401.54	-5.28	436.63	382.63	-54.00	384.76	397.55	12.78
AF AM	*	*	*	*	*	*	*	*	*
AKNA/AI	*	*	*	*	*	*	*	*	*
Asian	*	*	*	*	*	*	386.40	386.60	0.20
NH/OPI	*	*	*	*	*	*	*	*	*
White	419.00	413.93	-5.07	447.46	395.35	-52.11	401.09	421.03	19.94
Hispanic	*	*	*	*	*	*	*	*	*
ME	361.78	352.00	-9.78	*	*	*	345.67	363.83	18.17
EDS	429.17	406.17	-23.00	*	*	*	*	*	*
Non-EDS	404.54	401.07	-3.47	441.20	382.18	-59.02	383.76	396.88	13.12
SWD	325.50	313.50	-12.00	*	*	*	*	*	*
Non-SWD	421.60	417.55	-4.05	449.20	391.16	-58.05	390.87	407.09	16.21
LEP	*	*	*	*	*	*	*	*	*
Not LEP	412.13	406.70	-5.43	436.63	382.63	-54.00	387.58	401.78	14.20
Migrant	*	*	*	*	*	*	*	*	*
Not Migrant	404.98	399.59	-5.40	436.63	382.63	-54.00	386.00	399.04	13.04
Female	435.41	445.82	10.41	444.48	391.92	-52.56	405.30	420.45	15.15
Male	392.19	378.88	-13.30	428.09	372.52	-55.57	371.52	382.77	11.26

\* Results cannot be published without releasing personally identifiable information based upon the EED reporting protocol

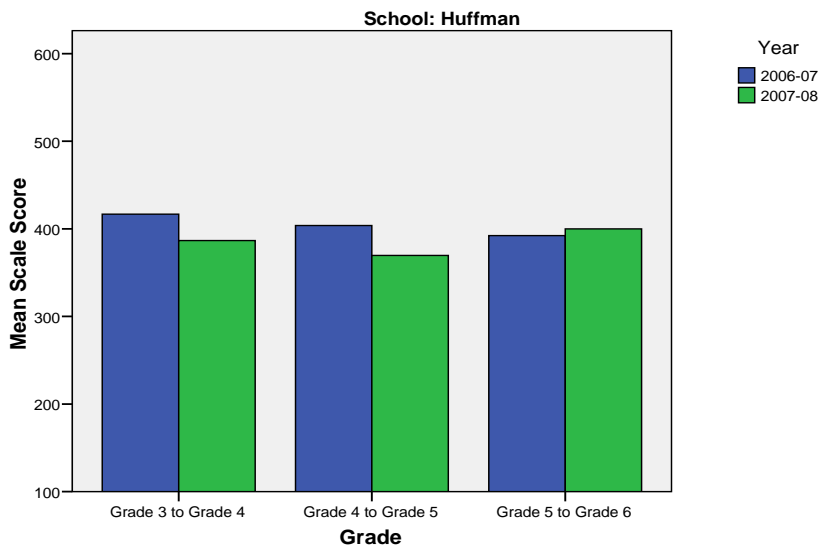
**Change in Mean Scale Score in SBA Writing by Grade between 2006-07 and 2007-08**



Huffman Elementary School SBA Change Average Scale Score by NCLB Groups: Mathematics									
	Average Scale Score of Students Tested in District Both Years			Average Scale Score of Students Tested in District Both Years			Average Scale Score of Students Tested in District Both Years		
	Grade 3 in 06-07	Grade 4 in 07-08	Difference	Grade 4- in 06-07	Grade 5 in 07-08	Difference	Grade 5- in 06-07	Grade 6 in 07-08	Difference
All Students	416.69	386.63	-30.06	403.82	369.65	-34.16	392.29	399.92	7.63
AF AM	*	*	*	*	*	*	*	*	*
AKNA/AI	*	*	*	*	*	*	*	*	*
Asian	*	*	*	*	*	*	381.20	423.20	42.00
NH/OPI	*	*	*	*	*	*	*	*	*
White	417.15	395.61	-21.54	421.16	385.92	-35.24	417.29	421.12	3.82
Hispanic	*	*	*	*	*	*	*	*	*
ME	419.56	356.44	-63.11	*	*	*	329.00	329.33	0.33
EDS	451.00	391.67	-59.33	*	*	*	*	*	*
Non-EDS	413.20	386.12	-27.08	407.96	373.82	-34.13	391.88	396.24	4.37
SWD	340.90	297.70	-43.20	*	*	*	*	*	*
Non-SWD	430.47	402.80	-27.67	414.38	378.49	-35.89	398.72	409.38	10.66
LEP	*	*	*	*	*	*	*	*	*
Not LEP	421.94	391.30	-30.63	403.82	369.65	-34.16	395.42	404.06	8.64
Migrant	*	*	*	*	*	*	*	*	*
Not Migrant	414.56	385.11	-29.44	403.82	369.65	-34.16	393.76	400.32	6.56
Female	414.14	408.77	-5.36	396.08	364.00	-32.08	401.60	408.00	6.40
Male	418.00	375.30	-42.70	411.88	375.54	-36.33	386.29	394.71	8.42

\* Results cannot be published without releasing personally identifiable information based upon the EED reporting protocol

**Change in Mean Scale Score in SBA Mathematics by Grade between 2006-07 and 2007-08**



Reading: SBA Results Compared for Huffman Elementary School, District and State Grades 3 Through 6															
	% Advanced Proficient			% Proficient			% Below Proficient			% Far Below Proficient			% Tested		
	School	District	State	School	District	State	School	District	State	School	District	State	School	District	State
All Students	50.67%	39.70%	35.67%	44.00%	43.89%	45.50%	2.22%	11.60%	13.02%	3.11%	4.80%	5.80%	99.12%	98.15%	97.98%
AF AM	*	20.73%	22.99%	*	54.18%	53.49%	*	17.79%	16.46%	*	7.30%	7.06%	100.00%	98.04%	97.49%
AKNA/AI	*	20.23%	14.62%	90.00%	51.11%	48.17%	*	18.54%	24.83%	*	10.11%	12.37%	100.00%	96.88%	97.59%
Asian	23.08%	30.22%	28.26%	69.23%	48.71%	51.04%	*	15.32%	15.32%	*	5.75%	5.38%	100.00%	97.64%	97.67%
NH/OPI	*	14.67%	N/A	*	51.03%	N/A	*	24.59%	N/A	*	9.71%	N/A	100.00%	98.98%	N/A
White	59.28%	52.75%	47.28%	36.53%	38.06%	42.41%	1.80%	6.69%	7.27%	2.40%	2.50%	3.03%	99.40%	98.68%	98.28%
Hispanic	33.33%	32.35%	31.74%	58.33%	46.43%	48.60%	*	14.67%	13.66%	*	6.55%	6.00%	100.00%	97.14%	97.32%
ME	27.78%	33.26%	34.76%	61.11%	48.25%	47.75%	*	13.47%	12.80%	*	5.01%	4.70%	94.74%	98.15%	98.03%
EDS	50.00%	22.85%	21.47%	43.75%	49.71%	48.65%	*	19.04%	20.31%	*	8.40%	9.57%	100.00%	97.50%	96.44%
Not EDS	50.72%	51.44%	46.31%	44.02%	39.84%	43.15%	1.91%	6.42%	7.56%	3.35%	2.30%	2.98%	99.05%	98.61%	99.16%
SWD	20.00%	10.08%	9.29%	44.00%	37.10%	37.96%	12.00%	32.15%	31.20%	24.00%	20.67%	21.55%	92.59%	94.28%	93.60%
Non-SWD	54.50%	45.02%	40.09%	44.00%	45.12%	46.77%	*	7.91%	9.98%	*	1.95%	3.17%	100.00%	98.88%	98.75%
LEP	*	4.97%	3.12%	*	39.93%	38.06%	*	37.14%	38.40%	*	17.96%	20.42%	80.00%	94.25%	96.11%
Not LEP	51.58%	42.78%	39.95%	43.89%	44.25%	46.48%	2.26%	9.33%	9.68%	2.26%	3.64%	3.88%	99.55%	98.51%	98.23%
Migrant	60.00%	27.01%	17.29%	*	50.34%	48.58%	*	16.44%	23.78%	*	6.21%	10.35%	100.00%	98.35%	98.50%
Not Migrant	50.45%	40.26%	36.97%	44.09%	43.61%	45.29%	2.27%	11.38%	12.26%	3.18%	4.74%	5.48%	99.10%	98.14%	97.94%
Female	60.87%	44.40%	39.45%	35.87%	43.41%	45.33%	*	8.75%	10.85%	*	3.44%	4.37%	100.00%	98.39%	98.31%
Male	43.61%	35.15%	32.09%	49.62%	44.37%	45.67%	2.26%	14.36%	15.08%	4.51%	6.13%	7.16%	98.52%	97.92%	97.66%

\* Results cannot be published without releasing personally identifiable information based upon the EED reporting protocol

Writing: SBA Results Compared for Huffman Elementary School, District and State Grades 3 Through 6															
	% Advanced Proficient			% Proficient			% Below Proficient			% Far Below Proficient			% Tested		
	School	District	State	School	District	State	School	District	State	School	District	State	School	District	State
All Students	41.78%	34.87%	30.49%	45.78%	44.25%	44.50%	*	18.78%	22.32%	*	2.10%	2.69%	99.12%	98.11%	97.96%
AF AM	*	20.71%	20.51%	*	46.71%	48.68%	*	28.71%	27.18%	*	3.88%	3.63%	100.00%	98.15%	97.71%
AKNA/AI	*	17.15%	12.11%	40.00%	45.31%	41.05%	60.00%	33.38%	40.69%	*	4.15%	6.15%	100.00%	96.51%	97.64%
Asian	23.08%	30.17%	28.49%	53.85%	45.92%	45.93%	*	21.33%	23.31%	*	2.58%	2.27%	100.00%	97.56%	97.67%
NH/OPI	*	14.02%	N/A	*	42.89%	N/A	*	39.38%	N/A	*	3.71%	N/A	100.00%	99.18%	N/A
White	48.50%	45.85%	40.04%	44.91%	41.91%	44.71%	*	11.26%	13.97%	*	0.99%	1.28%	99.40%	98.66%	98.22%
Hispanic	33.33%	27.33%	27.00%	33.33%	47.25%	48.36%	*	22.54%	22.23%	*	2.88%	2.41%	100.00%	97.07%	97.36%
ME	16.67%	28.51%	29.14%	61.11%	47.68%	47.29%	*	21.31%	21.37%	*	2.51%	2.20%	94.74%	98.15%	97.96%
EDS	31.25%	18.92%	17.53%	50.00%	47.34%	45.15%	*	29.95%	32.95%	*	3.79%	4.37%	100.00%	97.50%	96.53%
Not EDS	42.58%	45.99%	40.21%	45.45%	42.10%	44.01%	*	10.99%	14.35%	*	0.92%	1.44%	99.05%	98.54%	99.06%
SWD	11.54%	7.09%	6.94%	26.92%	38.82%	37.02%	*	45.96%	47.34%	*	8.12%	8.69%	96.30%	94.28%	93.97%
Non-SWD	45.73%	39.86%	34.45%	48.24%	45.23%	45.76%	*	13.89%	18.11%	*	1.02%	1.69%	99.50%	98.83%	98.66%
LEP	*	4.71%	3.14%	*	37.05%	30.66%	60.00%	50.57%	56.76%	*	7.67%	9.44%	100.00%	94.25%	96.18%
Not LEP	42.73%	37.55%	34.08%	46.36%	44.89%	46.32%	*	15.96%	17.79%	*	1.60%	1.81%	99.10%	98.47%	98.20%
Migrant	*	21.44%	14.20%	60.00%	48.58%	42.55%	*	26.63%	38.57%	*	3.35%	4.68%	100.00%	98.51%	98.58%
Not Migrant	42.27%	35.46%	31.63%	45.45%	44.06%	44.64%	*	18.43%	21.18%	*	2.04%	2.55%	99.10%	98.09%	97.92%
Female	54.35%	42.63%	37.48%	40.22%	42.50%	43.42%	*	13.62%	17.40%	*	1.26%	1.70%	100.00%	98.32%	98.22%
Male	33.08%	27.36%	23.87%	49.62%	45.96%	45.52%	*	23.78%	26.98%	*	2.91%	3.63%	98.52%	97.90%	97.72%

\* Results cannot be published without releasing personally identifiable information based upon the EED reporting protocol

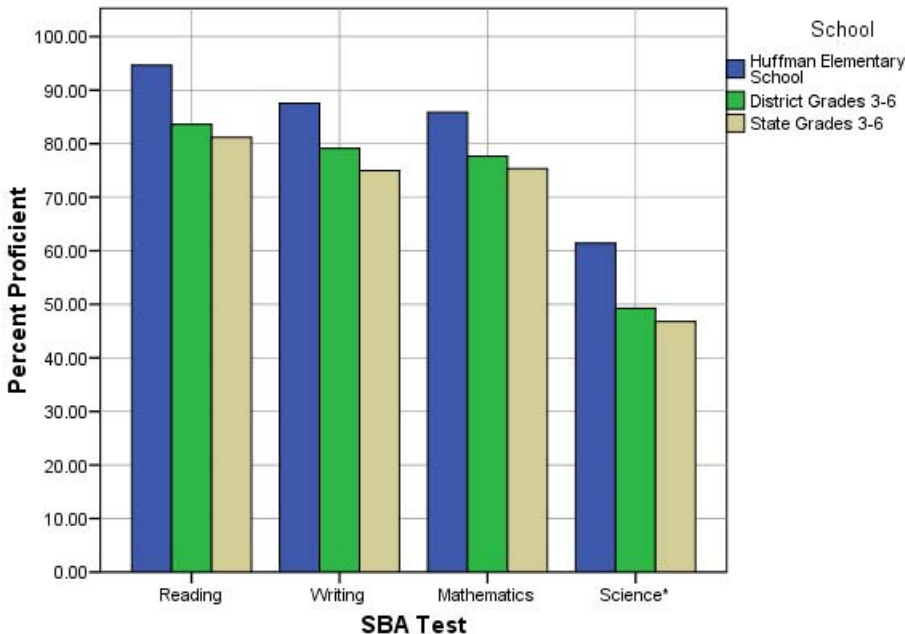
Mathematics: SBA Results Compared for Huffman Elementary School, District and State Grades 3 Through 6															
	% Advanced Proficient			% Proficient			% Below Proficient			% Far Below Proficient			% Tested		
	School	District	State	School	District	State	School	District	State	School	District	State	School	District	State
All Students	52.21%	39.81%	36.08%	33.63%	37.84%	39.26%	9.29%	12.46%	13.78%	4.87%	9.88%	10.88%	99.56%	98.52%	98.12%
AF AM	*	19.48%	22.09%	*	40.14%	41.60%	*	20.19%	18.61%	*	20.19%	17.70%	100.00%	98.38%	97.78%
AKNA/AI	*	23.20%	18.26%	30.00%	39.51%	39.14%	40.00%	19.22%	21.79%	*	18.07%	20.81%	100.00%	96.96%	97.72%
Asian	38.46%	37.02%	34.29%	38.46%	41.20%	41.23%	*	13.76%	14.10%	*	8.03%	10.38%	100.00%	99.27%	98.99%
NH/OPI	*	18.52%	N/A	*	38.07%	N/A	*	20.16%	N/A	*	23.25%	N/A	100.00%	99.39%	N/A
White	58.33%	51.12%	45.75%	33.33%	35.15%	38.35%	5.95%	8.41%	9.81%	2.38%	5.32%	6.09%	100.00%	98.69%	98.17%
Hispanic	25.00%	31.85%	31.11%	33.33%	40.04%	42.19%	*	15.02%	15.10%	*	13.09%	11.60%	100.00%	98.66%	98.47%
ME	33.33%	33.75%	35.45%	38.89%	41.21%	40.61%	*	13.93%	13.30%	*	11.11%	10.64%	94.74%	98.26%	98.00%
EDS	50.00%	24.26%	23.31%	31.25%	41.50%	40.98%	*	17.54%	18.60%	*	16.70%	17.11%	100.00%	98.14%	96.77%
Not EDS	52.38%	50.70%	45.67%	33.81%	35.28%	37.96%	8.57%	8.91%	10.16%	5.24%	5.12%	6.21%	99.53%	98.79%	99.16%
SWD	*	12.52%	12.06%	*	31.53%	32.14%	11.54%	23.68%	23.60%	38.46%	32.27%	32.20%	96.30%	94.19%	93.99%
Non-SWD	58.00%	44.69%	40.12%	32.50%	38.97%	40.45%	*	10.46%	12.13%	*	5.88%	7.30%	100.00%	99.34%	98.85%
LEP	*	8.22%	6.05%	*	36.74%	34.10%	*	24.50%	27.43%	80.00%	30.54%	32.42%	100.00%	97.95%	97.56%
Not LEP	52.94%	42.73%	40.09%	34.39%	37.94%	39.95%	9.50%	11.35%	11.96%	3.17%	7.98%	8.01%	99.55%	98.57%	98.19%
Migrant	60.00%	30.94%	22.37%	*	43.65%	40.27%	*	14.21%	20.36%	*	11.20%	17.00%	100.00%	98.68%	98.54%
Not Migrant	52.04%	40.21%	37.05%	33.48%	37.58%	39.19%	9.50%	12.38%	13.31%	4.98%	9.83%	10.45%	99.55%	98.51%	98.09%
Female	57.61%	41.01%	36.83%	29.35%	38.32%	39.88%	*	11.59%	13.34%	*	9.09%	9.96%	100.00%	98.71%	98.31%
Male	48.51%	38.66%	35.38%	36.57%	37.38%	38.67%	8.21%	13.30%	14.20%	6.72%	10.66%	11.75%	99.26%	98.34%	97.94%

\* Results cannot be published without releasing personally identifiable information based upon the EED reporting protocol

Science: SBA Results Compared for Huffman Elementary School, District and State Grade 4															
	% Advanced Proficient			% Proficient			% Below Proficient			% Far Below Proficient			% Tested		
	School	District	State	School	District	State	School	District	State	School	District	State	School	District	State
All Students	31.43%	23.68%	22.1%	30.00%	25.57%	24.7%	25.71%	31.70%	31.3%	12.86%	19.06%	21.9%	100.00%	97.81%	95.35%
AF AM	*	9.18%	8.9%	*	18.84%	23.3%	*	39.13%	38.0%	*	32.85%	29.8%	100.00%	98.57%	94.49%
AKNA/AI	*	6.54%	6.8%	*	21.50%	14.2%	*	42.99%	35.2%	*	28.97%	43.8%	100.00%	96.40%	94.98%
Asian	*	10.18%	13.4%	*	21.40%	19.4%	*	39.30%	37.5%	*	29.12%	29.7%	100.00%	98.28%	97.39%
NH/OPI	*	6.57%	N/A	*	8.03%	N/A	*	34.31%	N/A	*	51.09%	N/A	100.00%	98.56%	N/A
White	33.33%	36.40%	32.3%	33.33%	29.08%	29.9%	23.53%	25.33%	27.3%	9.80%	9.19%	10.5%	100.00%	97.87%	94.97%
Hispanic	*	16.17%	18.2%	*	26.15%	26.0%	*	32.08%	33.9%	*	25.61%	21.9%	100.00%	97.12%	96.39%
ME	*	16.06%	18.5%	*	26.12%	26.8%	33.33%	37.47%	35.9%	33.33%	20.34%	18.7%	100.00%	98.32%	96.90%
EDS	*	8.34%	11.0%	50.00%	22.44%	20.1%	*	38.10%	34.7%	*	31.12%	34.2%	100.00%	97.73%	94.99%
Not EDS	31.25%	35.00%	31.2%	28.13%	27.88%	28.5%	26.56%	26.97%	28.5%	14.06%	10.15%	11.9%	100.00%	97.87%	95.64%
SWD	*	8.38%	7.7%	*	16.38%	15.2%	27.27%	36.57%	36.6%	36.36%	38.67%	40.5%	100.00%	93.25%	91.70%
Non-SWD	35.59%	26.43%	24.7%	30.51%	27.22%	26.4%	25.42%	30.82%	30.4%	8.47%	15.53%	18.5%	100.00%	98.68%	96.04%
LEP	*	2.00%	1.5%	*	5.14%	3.8%	*	34.00%	28.3%	*	58.86%	66.5%	100.00%	96.15%	95.67%
Not LEP	32.35%	26.13%	25.2%	30.88%	27.88%	27.9%	26.47%	31.44%	31.8%	10.29%	14.55%	15.1%	100.00%	98.00%	95.30%
Migrant	*	9.70%	9.0%	*	26.87%	15.3%	*	39.55%	34.3%	*	23.88%	41.4%	100.00%	97.10%	97.32%
Not Migrant	30.88%	24.24%	23.0%	29.41%	25.51%	25.3%	26.47%	31.38%	31.1%	13.24%	18.86%	20.5%	100.00%	97.84%	95.21%
Female	36.36%	22.73%	20.8%	36.36%	25.78%	25.2%	13.64%	33.63%	32.6%	13.64%	17.87%	21.4%	100.00%	98.05%	95.43%
Male	29.17%	24.61%	23.4%	27.08%	25.36%	24.2%	31.25%	29.80%	30.1%	12.50%	20.23%	22.3%	100.00%	97.58%	95.27%

\* Results cannot be published without releasing personally identifiable information based upon the EED reporting protocol

**2007-08 SBA Results Compared for Huffman Elementary School, District and State**

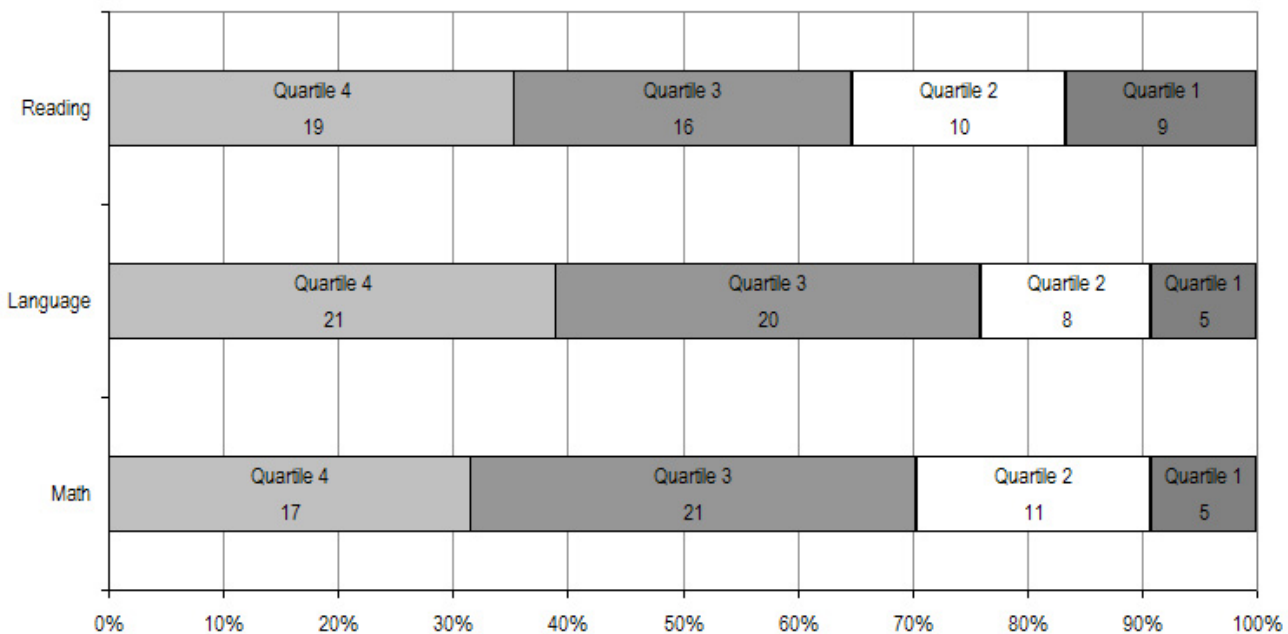


\* 2007-08 was the first year Science was administered for grades 4, 8 and 10 on the SBA.

Huffman Elementary School TerraNova Grade 5 Percent in Each Quartile								
Reading	Above Average		Average				Below Average	
	4th Quartile (76-99 percentile)		3rd Quartile (51-75 percentile)		2nd Quartile (26-50 percentile)		1st Quartile (1-25 percentile)	
	School	District	School	District	School	District	School	District
07-08	35.19%	25.65%	29.63%	24.08%	18.52%	23.73%	16.67%	26.55%
06-07	46.2%	33.1%	23.1%	26.1%	25.0%	23.6%	5.8%	17.2%
05-06	50.0%	30.4%	23.6%	26.8%	20.8%	24.5%	5.6%	18.3%
04-05	56.7%	29.2%	23.9%	27.6%	10.4%	24.5%	9.0%	18.7%
03-04	36.3%	30.6%	38.8%	26.9%	13.8%	24.2%	11.3%	18.3%
<b>Language</b>								
07-08	38.89%	26.79%	37.04%	27.20%	14.81%	24.12%	9.26%	21.89%
06-07	44.2%	34.7%	21.2%	26.9%	26.9%	21.4%	7.7%	17.0%
05-06	48.6%	34.0%	29.2%	26.5%	16.7%	22.0%	5.6%	17.5%
04-05	61.2%	32.1%	17.9%	28.3%	13.4%	21.2%	7.5%	18.4%
03-04	45.0%	34.1%	27.5%	26.5%	16.3%	21.7%	11.3%	17.7%
<b>Mathematics</b>								
07-08	31.48%	25.45%	38.89%	26.40%	20.37%	24.47%	9.26%	23.68%
06-07	44.2%	29.7%	28.8%	31.6%	17.3%	21.2%	9.6%	17.4%
05-06	50.0%	28.4%	27.8%	31.9%	16.7%	22.3%	5.6%	17.5%
04-05	61.2%	26.9%	23.9%	31.1%	11.9%	22.9%	3.0%	19.1%
03-04	45.6%	28.3%	25.3%	29.3%	25.3%	22.6%	3.8%	19.8%

The double bold line indicates a change from the TerraNova 2<sup>nd</sup> edition to the TerraNova 3<sup>rd</sup> edition.

2007-08 TerraNova 3rd Edition Grade 5 Percent and Count of Students in Each Quartile For Huffman Elementary School



**Climate Survey Results for Huffman Elementary School**

The Anchorage School District administered the School Climate and Connectedness Surveys in spring 2008 to students in grades 5-12, all school staff and parents/guardians of students in grades K-12. The surveys were done to provide schools with information about perceptions and experiences related to school climate for use in setting school goals and redirecting resources. In the spring of 2008 grades 3 and 4 students were involved in a pilot survey for measuring school climate and connectedness. The results are currently under review by the American Institutes for Research.

Respondents were asked to answer a series of questions that were related to a certain concept. For each item, there were five options from which to choose a response. The answer options ranged from strongly disagree (1) to strongly agree (5).

Student Survey Response Rate – Grades 5-12			
	Huffman Elementary School	Overall Elementary Schools	District**
# Surveys Completed	107	5,579	21,629
# Reportable Surveys	88	4,969	18,654
# Students Enrolled*	112	6,331	28,945
Reportable Response Rate	78.57%	78.49%	64.45%

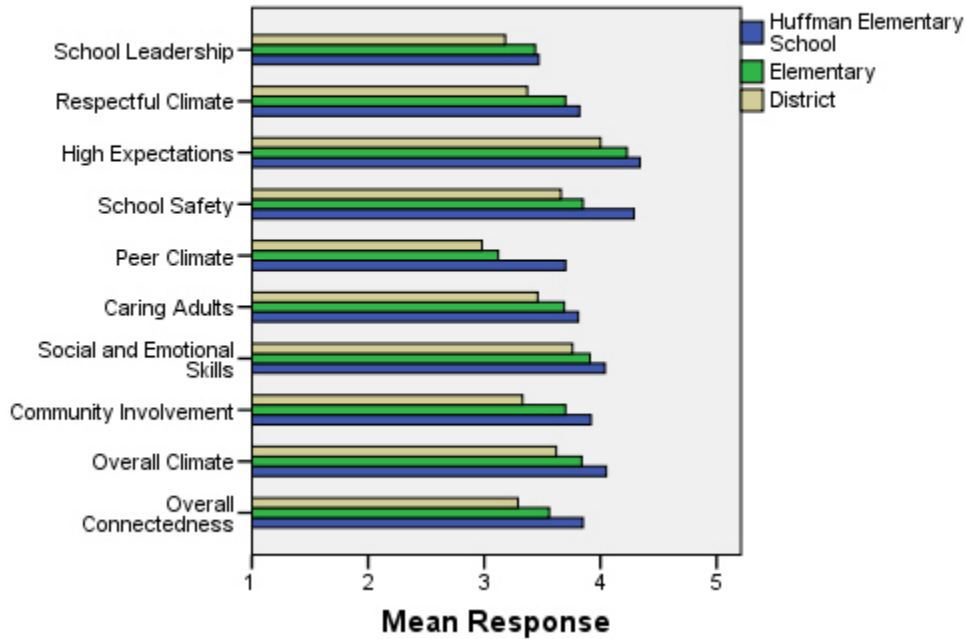
\*Number enrolled as of April 1, 2008

\*\*District data does not include KCC responses

Each question in the survey related to a factor or concept, and a score was calculated based on the mean response for the questions related to each factor. The factors measured in the survey were:

- **School Leadership and Student Involvement:** This factor reflects students’ feelings about the decision making of school leaders as well as student participation in the school governance. Students selected responses between 1 and 5 where 1 indicates a low level of school leadership and student involvement and 5 indicates a high level of school leadership and student involvement.
- **Respectful Climate:** This factor reflects students’ feelings about fairness of rules and respect for students’ contributions. Students selected responses between 1 and 5 where 1 indicates a lack of a respectful climate and 5 indicates a highly respectful climate for students.
- **High Expectations:** This factor reflects students’ feelings about their own expectations as well as those of adults in their school and community. Students selected responses between 1 and 5 where 1 indicates a lack of high expectations and 5 indicates a high level of high expectations.
- **School Safety:** This factor reflects students’ feelings about bullies and gangs at school as well as general crime and violence in the community. Students selected responses between 1 and 5 where 1 indicates a low level of school safety and 5 indicates a high level of school safety.
- **Peer Climate:** This factor reflects students’ feelings about how respectful students are to one another and how helpful students are to other students. Students selected responses between 1 and 5 where 1 indicates a more negative peer climate and 5 indicates a very positive peer climate at the school.
- **Caring Adults:** This factor reflects students’ feelings about how close they feel to adults in the school. Students selected responses between 1 and 5 where 1 indicates a lack of caring adult relationships and 5 indicates strong caring adult relationships at the school.
- **Social and Emotional Learning:** This factor reflects students’ ability to think about the consequences of their actions and to empathize with others. Students selected responses between 1 and 5 where 1 indicates that students at the school perceive themselves as having poorer social and emotional learning, and 5 indicates higher levels of social and emotional learning.
- **Community Involvement:** This factor reflects students’ feelings about how supportive and welcoming the school is with parents and the community. Students selected responses between 1 and 5 where 1 indicates a less supportive and welcoming environment and 5 indicates a more supportive and welcoming environment.
- **Overall Climate:** The overall climate score was computed as the mean of three scales: school leadership, high expectations and school safety.
- **Overall Connectedness:** Overall connectedness score was computed as a mean of four scales: respectful climate, peer climate, caring adults and community involvement.

### Climate and Connectedness Student Survey - Huffman



Student Survey Mean Response by Factors Related to School Climate - Overall District			
	Huffman Elementary School	Overall Elementary Schools	District
School Leadership	3.47	3.44	3.18
Respectful Climate	3.82	3.70	3.37
High Expectations	4.34	4.23	4.00
School Safety	4.29	3.85	3.66
Peer Climate	3.70	3.12	2.98
Caring Adults	3.81	3.69	3.46
Social and Emotional Skills	4.04	3.91	3.76
Community Involvement	3.92	3.70	3.33
Overall Climate	4.05	3.84	3.62
Overall Connectedness	3.85	3.56	3.29

Range is from a low of 1 to a high of 5

Students were also asked to answer questions related to school danger. The following table provides the responses for those questions:

Student Survey Results of the School Danger Questions - Percent of Students Responding in Each Category					
	0 Times	1-2 Times	3-6 Times	7-12 Times	> 12 Times
<b>Huffman Elementary School</b>					
Under the influence of drugs?	98.86%	0.00%	1.14%	0.00%	0.00%
Under the influence of alcohol?	96.59%	3.41%	0.00%	0.00%	0.00%
Destroy things (vandalism)?	56.32%	26.44%	8.05%	3.45%	5.75%
Get into fights?	37.50%	32.95%	18.18%	4.55%	6.82%
Steal things?	52.27%	31.82%	9.09%	5.68%	1.14%
Threaten or bully?	53.41%	23.86%	15.91%	1.14%	5.68%
Under the influence of inhalants?	77.91%	15.12%	1.16%	3.49%	2.33%
Carry weapons?	87.50%	9.09%	2.27%	1.14%	0.00%
<b>Overall Elementary Schools</b>					
Under the influence of drugs?	91.87%	5.65%	1.22%	0.31%	0.96%
Under the influence of alcohol?	91.42%	6.01%	1.16%	0.51%	0.90%
Destroy things (vandalism)?	46.82%	32.08%	12.45%	3.30%	5.36%
Get into fights?	22.32%	35.75%	22.56%	7.96%	11.41%
Steal things?	49.79%	27.92%	12.01%	4.33%	5.95%
Threaten or bully?	32.34%	28.83%	17.08%	7.78%	13.97%
Under the influence of inhalants?	71.03%	17.07%	6.14%	2.63%	3.12%
Carry weapons?	79.22%	15.35%	3.17%	0.59%	1.68%
<b>District</b>					
Under the influence of drugs?	60.45%	15.05%	9.54%	3.92%	11.04%
Under the influence of alcohol?	63.11%	16.37%	8.90%	4.43%	7.19%
Destroy things (vandalism)?	41.26%	29.47%	15.45%	5.88%	7.94%
Get into fights?	26.40%	35.20%	21.96%	7.11%	9.33%
Steal things?	44.80%	25.68%	13.81%	6.98%	8.74%
Threaten or bully?	32.21%	26.21%	16.68%	9.27%	15.63%
Under the influence of inhalants?	72.79%	14.21%	5.66%	2.48%	4.87%
Carry weapons?	69.45%	19.15%	5.34%	2.01%	4.06%

Student Survey Results of the Mean Factor Score by Ethnicity (Self-Reported)							
	AKNA/AI	AF AM	Hispanic	Asian/NH	White	Other	Multi-Ethnic
<b>Huffman Elementary School</b>							
School Leadership	3.43	3.80	3.40	3.57	3.45	3.50	3.20
Respectful Climate	3.76	3.67	4.00	3.81	3.78	4.06	3.42
High Expectations	4.29	4.50	4.26	4.31	4.36	4.41	3.71
School Safety	4.03	4.80	4.32	4.54	4.30	4.25	3.60
Peer Climate	3.77	3.50	3.73	3.77	3.66	3.80	3.60
Caring Adults	3.55	4.60	3.72	3.94	3.81	3.96	3.30
Social and Emotional Skills	4.03	4.47	4.15	3.84	4.00	4.27	***
Community Involvement	3.86	4.21	3.69	3.73	4.02	3.67	3.71
Overall Climate	3.94	4.37	3.99	4.13	4.07	3.97	***
Overall Connectedness	3.86	4.00	3.96	3.80	3.85	3.84	***
<b>Overall Elementary Schools</b>							
School Leadership	3.56	3.50	3.52	3.55	3.37	3.44	3.42
Respectful Climate	3.75	3.60	3.66	3.72	3.71	3.69	3.63
High Expectations	4.12	4.23	4.23	4.22	4.26	4.19	4.25
School Safety	3.75	3.63	3.73	3.68	4.03	3.66	3.79
Peer Climate	3.12	2.94	3.12	3.18	3.16	3.05	3.05
Caring Adults	3.64	3.73	3.64	3.59	3.74	3.60	3.76
Social and Emotional Skills	3.86	3.84	3.91	3.95	3.93	3.90	3.89
Community Involvement	3.66	3.60	3.67	3.66	3.75	3.66	3.70
Overall Climate	3.81	3.79	3.84	3.81	3.89	3.76	3.82
Overall Connectedness	3.56	3.49	3.51	3.53	3.60	3.49	3.56
<b>District</b>							
School Leadership	3.33	3.14	3.19	3.28	3.14	3.17	3.15
Respectful Climate	3.48	3.18	3.32	3.39	3.39	3.37	3.33
High Expectations	3.98	3.94	3.96	4.02	4.02	4.00	4.01
School Safety	3.60	3.48	3.55	3.47	3.78	3.51	3.62
Peer Climate	3.01	2.85	2.94	3.05	3.00	2.92	2.93
Caring Adults	3.49	3.43	3.37	3.33	3.51	3.42	3.46
Social and Emotional Skills	3.73	3.66	3.73	3.81	3.78	3.75	3.74
Community Involvement	3.37	3.22	3.31	3.29	3.34	3.34	3.31
Overall Climate	3.64	3.52	3.57	3.59	3.65	3.56	3.60
Overall Connectedness	3.33	3.17	3.24	3.26	3.31	3.26	3.27

\*\*\*Results can not be calculated because of missing responses

The response rate is not high enough to provide statistically reliable results for Huffman Elementary School's Staff Survey Results.

Parent/Guardian Survey Response Rate			
	Huffman Elementary School	Overall Elementary Schools	District**
# Surveys Completed	100	3,933	7,415
# Primary Guardians*	392	23,668	48,693
Response Rate	25.51%	16.62%	15.23%

\*Number students enrolled as of April 1, 2008 without dual guardians included

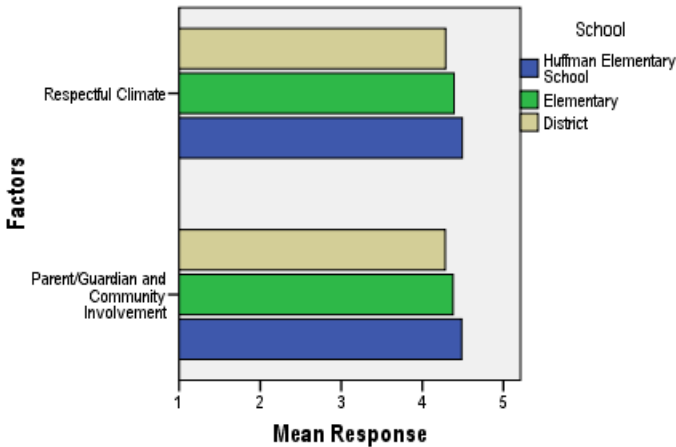
\*\*District data

- 1) does not include KCC responses;
- 2) does include responses without a school designation

Two factors are calculated from the Parent/Guardian Survey. All results other than the factor scores below are reported by individual question: questions in the graphs are condensed phrases from the full question, while questions in the tables are the full question.

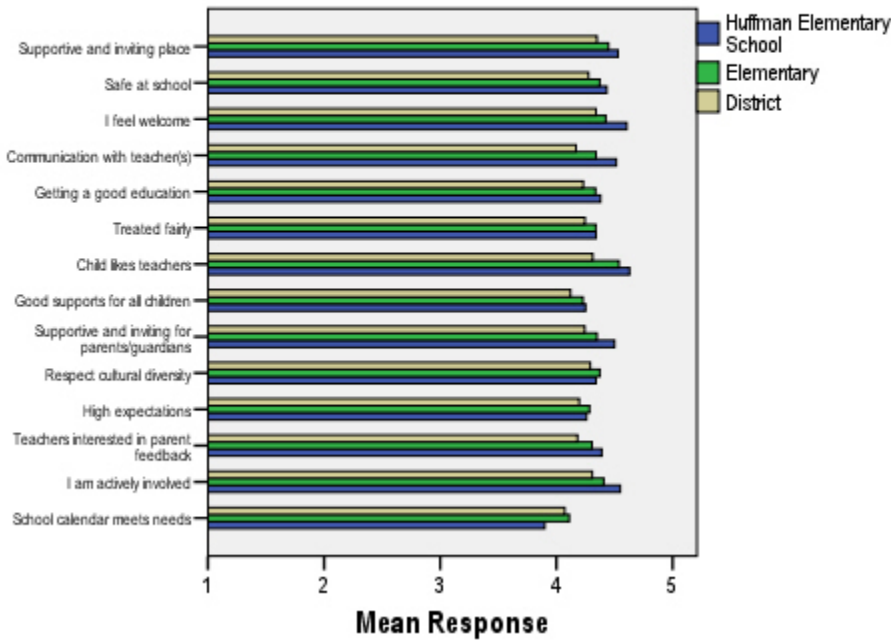
- **Respectful Climate:** This factor is calculated by determining the mean of five questions: 1) My child's school is a supportive and inviting place, 2) I feel welcome at this school, 3) I am satisfied with communication with my child's teacher(s), 4) This school is a supportive and inviting place for parents/guardians and 5) Adults at this school respect cultural diversity.
- **Parent/Guardian and Community Involvement:** This factor is calculated by determining the mean of five questions: 1) I feel welcome at this school, 2) This school is a supportive and inviting place for parents/guardians, 3) Adults at this school respect cultural diversity, 4) Teacher's at my child's school are interested in what I have to say and 5) I feel like I am actively involved in my child's education.

**Parent/Guardian Survey Mean Factor Scores (Range is from a low of 1 to a high of 5)**



Parent/Guardian Factor Scores			
	Huffman Elementary School	Overall Elementary Schools	District
Respectful Climate	4.49	4.39	4.29
Parent/Guardian and Community Involvement	4.49	4.38	4.28

**Climate and Connectedness Parent/Guardian Survey - Huffman**



Parent/Guardian Mean Response by Questions Related to School Climate - Overall			
	Huffman Elementary School	Overall Elementary Schools	District
My child's school is a supportive and inviting place	4.53	4.45	4.35
My child is safe at school	4.43	4.37	4.28
I feel welcome at this school	4.61	4.43	4.34
I am satisfied with communication with my child's teacher(s)	4.52	4.34	4.17
My child is getting a good education at this school	4.38	4.34	4.23
My child is treated fairly at school	4.34	4.34	4.25
My child likes his/her teachers	4.63	4.54	4.31
At this school, there are good supports for all children, including children with learning disabilities	4.25	4.23	4.12
This school is a supportive and inviting place for parents/guardians	4.50	4.35	4.24
Adults at this school respect cultural diversity	4.34	4.37	4.29
Adults at this school have high expectations of my child	4.26	4.29	4.20
Teachers at my child's school are interested in what I have to say	4.39	4.31	4.18
I feel like I am actively involved in my child's education	4.55	4.41	4.31
The district's school calendar meets the needs of my child and our family	3.90	4.11	4.07

Range is from a low of 1 to a high of 5

Parent/Guardian Mean Response by Questions Related to School Climate by Ethnicity (Self-Reported)							
Huffman Elementary School	AKNA/AI	AF AM	Hispanic	Asian/NH	White	Other	ME
My child's school is a supportive and inviting place	4.80	4.50	***	4.00	4.54	5.00	4.00
My child is safe at school	4.80	5.00	***	4.00	4.43	5.00	3.00
I feel welcome at this school	4.80	4.50	***	5.00	4.58	5.00	4.00
I am satisfied with communication with my child's teacher(s)	4.80	4.50	***	5.00	4.43	5.00	5.00
My child is getting a good education at this school	4.80	4.50	***	4.00	4.34	5.00	4.00
My child is treated fairly at school	4.40	4.50	***	4.00	4.39	5.00	1.00
My child likes his/her teachers	4.80	5.00	***	5.00	4.60	5.00	4.00
At this school, there are good supports for all children, including children with learning disabilities	5.00	4.00	***	4.00	4.20	5.00	4.00
This school is a supportive and inviting place for parents/guardians	4.40	4.50	***	5.00	4.49	5.00	4.00
Adults at this school respect cultural diversity	4.40	4.50	***	4.00	4.39	5.00	3.00
Adults at this school have high expectations of my child	4.80	5.00	***	4.00	4.27	5.00	1.00
Teachers at my child's school are interested in what I have to say	4.60	4.00	***	4.25	4.35	5.00	5.00
I feel like I am actively involved in my child's education	4.60	4.50	***	4.50	4.51	5.00	5.00
The district's school calendar meets the needs of my child and our family	4.80	4.00	***	2.75	3.90	5.00	1.00
Overall Elementary Schools							
My child's school is a supportive and inviting place	4.47	4.36	4.51	4.44	4.47	4.26	4.46
My child is safe at school	4.42	4.40	4.42	4.36	4.38	4.23	4.35
I feel welcome at this school	4.37	4.38	4.47	4.48	4.44	4.27	4.49
I am satisfied with communication with my child's teacher(s)	4.40	4.30	4.45	4.36	4.35	4.19	4.35
My child is getting a good education at this school	4.40	4.28	4.44	4.40	4.33	4.04	4.38
My child is treated fairly at school	4.34	4.15	4.37	4.32	4.38	4.14	4.33
My child likes his/her teachers	4.52	4.41	4.47	4.53	4.57	4.49	4.55
At this school, there are good supports for all children, including children with learning disabilities	4.32	4.06	4.31	4.31	4.22	4.05	4.31
This school is a supportive and inviting place for parents/guardians	4.31	4.22	4.42	4.38	4.36	4.11	4.44
Adults at this school respect cultural diversity	4.28	4.25	4.38	4.27	4.43	4.19	4.39
Adults at this school have high expectations of my child	4.30	4.26	4.36	4.27	4.31	3.95	4.28
Teachers at my child's school are interested in what I have to say	4.35	4.25	4.39	4.24	4.33	4.16	4.31
I feel like I am actively involved in my child's education	4.38	4.48	4.40	4.31	4.45	4.20	4.40
The district's school calendar meets the needs of my child and our family	4.22	4.25	4.20	4.19	4.10	3.62	4.08
District							
My child's school is a supportive and inviting place	4.37	4.20	4.41	4.37	4.37	4.20	4.37
My child is safe at school	4.31	4.18	4.29	4.31	4.29	4.11	4.30
I feel welcome at this school	4.31	4.18	4.38	4.36	4.36	4.23	4.40
I am satisfied with communication with my child's teacher(s)	4.21	3.99	4.32	4.23	4.16	4.03	4.20
My child is getting a good education at this school	4.28	4.09	4.33	4.31	4.23	4.03	4.26
My child is treated fairly at school	4.21	3.94	4.30	4.24	4.29	4.08	4.24
My child likes his/her teachers	4.33	4.06	4.31	4.35	4.33	4.20	4.34
At this school, there are good supports for all children, including children with learning disabilities	4.19	3.90	4.24	4.23	4.11	3.97	4.18
This school is a supportive and inviting place for parents/guardians	4.21	4.05	4.31	4.29	4.26	4.05	4.31
Adults at this school respect cultural diversity	4.20	4.02	4.29	4.22	4.34	4.17	4.31
Adults at this school have high expectations of my child	4.24	4.05	4.26	4.21	4.21	3.94	4.20
Teachers at my child's school are interested in what I have to say	4.22	4.04	4.28	4.17	4.20	4.05	4.19
I feel like I am actively involved in my child's education	4.29	4.36	4.37	4.24	4.33	4.20	4.30
The district's school calendar meets the needs of my child and our family	4.19	4.18	4.21	4.16	4.06	3.66	4.02

Range is from a low of 1 to a high of 5

\*\*\*Results can not be calculated because of missing responses