

Kasuun Elementary School Overview

Statement of Program

Kasuun Elementary provides a rigorous academic environment in a traditional K-6 school setting. We also have a special education preschool and the IGNITE gifted program as a part of our school family. Respect and responsibility are the cornerstone characteristics that form the foundation for everything we do. Staff, students and our community have a sense of pride about our school, and it shows.

Reading is a primary focus in our instruction. Through the use of the Accelerated Reader program, we encourage students to be independent and lifelong readers. As a result, our children love to read, demonstrated by our library's monthly circulation of more than 5,000 books.

Our commitment to prepare our students for the future has helped us focus on computer training that teaches a sequence of skills our students will need in the advanced grades. They also gain environmental awareness, taking part in our "outdoor classroom" at the Campbell Creek Science Center, which is within walking distance.

From the School Report Card

School Goals	
Goal	Level of Achievement
Students in grades 3-6 will improve in the area of structure and conventions by a minimum of 3 percent as measured by the state writing assessment.	Partially Attained
Students in grades 3-6 will improve in the area of geometry by a minimum of 3 percent as measured by the state math assessment.	Not Attained
Awareness of the importance of a healthy lifestyle will increase and students will engage in activities to improve their overall health.	Attained

From the School Report Card

Budget*	
2006-07 Actual Expenditures	\$2,378,309
2007-08 Revised Budgeted Amount	\$2,940,373
2008-09 Proposed Budget	\$2,964,845

*Dollars budgeted or expended are general fund only
From IFAS

Kasuun Elementary School Characteristics			
	School	District	Source of Information
Membership	491	48,858	Fall OASIS
Capacity	93.50%	N/A	2008-18 ASD Capital Improvement Plan
Attendance Rate	94.12%	92.83%	NCLB Summer Data Collection
Retention Rate K-8	0.00%	0.60%	SMS and NCLB Summer Data Collection
Transiency Rate	17.97%	26.07%	NCLB Summer Data Collection
Economically Disadvantaged	156	17,717	Fall OASIS
Average Weekly Volunteer Hours	40	4,660	Department of Education Report Card Report
Students Taking the Alternate Assessment	0	228	SMS
Change in Enrollment	-0.41%	-0.76%	Fall Oasis

Teacher Qualification				
Number of Teachers	Percent Fully Licensed	Percent With Advanced Degrees	Number Nationally Board Certified	Percent of Classes Taught by "Highly Qualified Teachers"
35	100.00%	40.00%	0	100.00%

Kasuun Elementary School Business Partnerships
Alaska Bureau of Land Management ; Great Alaska Pizza Co.

From the School Report Card

Ethnicity Report							
African-American/Black	Alaska Native/American Indian	Asian	Native Hawaiian/Other Pacific Islander	White	Hispanic	Multi-Ethnic	Total
21	42	45	8	252	60	63	491

From Fall Oasis

Full Academic Year		
Students Enrolled	Students Enrolled for FAY	Percent FAY
508	462	90.94%

From participation file (Grades 3-10)

**Kasuun Elementary School
2007-08 Adequate Yearly Progress
Status Report**

Meets AYP under Safe Harbor

AMO For Language Arts: 77.18%
AMO For Mathematics: 66.09%

Group	Participation Rate				"FAY" (D) Tested & Enrolled "FAY"	Language Arts Performance				Mathematics Performance			
	(A) Number Enrolled	(B) Number Tested	Participation Rate (%)	(C) Participation Rate Met		(E) Proficient on LA	(F) Percent Proficient on LA	(G) LA Target	(H) Met AMO for LA	(I) Proficient on Mathematics	(J) Percent Proficient in Mathematics	(K) Mathematics Target	(L) Met AMO for Mathematics
All Students	277	276	99.6%	Yes	255	216	84.7%	71.1%	Yes	209	82%	59.2%	Yes
AF AM	9	9	N/A	N/A	N/A	N/A	N/A	N/A	N/A	N/A	N/A	N/A	N/A
AKNA/AI	26	26	100%	Yes	N/A	N/A	N/A	N/A	N/A	N/A	N/A	N/A	N/A
Asian/NH/OPI	32	32	100%	Yes	31	28	90.3%	59.6%	Yes	25	80.6%	46.3%	Yes
White	142	141	99.3%	Yes	134	119	88.8%	68.7%	Yes	117	87.3%	56.6%	Yes
Hispanic	30	30	100%	Yes	29	20	69%	59%	Yes	20	69%	45.6%	Yes
ME	38	38	100%	Yes	31	24	77.4%	59.6%	Yes	23	74.2%	46.3%	Yes
EDS	85	84	98.8%	Yes	75	59	78.7%	65.9%	Yes	59	78.7%	53.4%	Yes
SWD	60	59	98.3%	Yes	52	31	59.6%	63.6%	Yes-SH	30	57.7%	50.8%	Yes
LEP	45	45	100%	Yes	44	34	77.3%	62.4%	Yes	30	68.2%	49.5%	Yes

Attendance Rate: Met

94.1% (Threshold is 85%)

N/A is used to indicate:

- (1) Subgroups with 20 or fewer students enrolled on the first day of testing shall not be included in participation rate calculation.
- (2) Subgroups with 25 or fewer students enrolled for the "full academic year" shall not have the performance score computed.

* For the groups where the number enrolled is less than or equal to 40, participation is met when no more than two miss the test. Groups can also meet this target using the average of the past two or three years.

** When a group achieves a "Yes" without meeting the listed target, it has done so using either the 99% confidence interval or Safe Harbor.

*** The results cannot be published without releasing personally identifiable information based upon the EED reporting protocol.

This document was prepared by the ASD Assessment and Evaluation Department.

7/10/2008

Kasuun Elementary School
2007-08 Adequate Yearly Progress
Growth Report

The AYP growth reports are generated by the Alaska State Department of Education and Early Development. The reports can be found online at: http://www.asdk12.org/depts/assess_eval/AYP/State_AS_D_AYG_0708.pdf

SBA Proficiency Comparison by Grade for Kasuun Elementary School																
	Reading Percent Proficient				Writing Percent Proficient				Mathematics Percent Proficient				Science* Percent Proficient			
	04-05	05-06	06-07	07-08	04-05	05-06	06-07	07-08	04-05	05-06	06-07	07-08	04-05	05-06	06-07	07-08
All Students	84.95%	81.72%	87.31%	85.87%	82.08%	79.48%	82.84%	81.39%	79.93%	72.01%	82.53%	80.36%	N/A	N/A	N/A	37.10%
Grade 3	87.67%	80.28%	89.39%	92.31%	79.45%	74.65%	81.82%	81.54%	82.19%	76.06%	86.36%	83.08%	N/A	N/A	N/A	N/A
Grade 4	78.79%	81.43%	87.50%	80.65%	78.79%	81.43%	84.38%	80.33%	75.76%	71.43%	83.08%	80.65%	N/A	N/A	N/A	37.10%
Grade 5	86.15%	78.33%	86.84%	86.76%	81.54%	80.00%	82.89%	82.35%	75.38%	68.33%	81.58%	86.76%	N/A	N/A	N/A	N/A
Grade 6	86.67%	86.57%	85.48%	83.95%	88.00%	82.09%	82.26%	81.25%	85.33%	71.64%	79.03%	72.50%	N/A	N/A	N/A	N/A

* 2007-08 was the first year Science was administered for grades 4, 8 and 10 on the SBA.

SBA Proficient & Not Proficient by NCLB Groups for Kasuun Elementary School								
	Reading		Writing		Mathematics		Science**	
	Percent Proficient	Percent Not Proficient	Percent Proficient	Percent Not Proficient	Percent Proficient	Percent Not Proficient	Percent Proficient	Percent Not Proficient
All Students	85.87%	14.13%	81.39%	18.61%	80.36%	19.64%	37.10%	62.90%
AF AM	66.67%	33.33%	75% or more	25% or fewer	44.44%	55.56%	*	*
AKNA/AI	88.46%	11.54%	90% or more	10% or fewer	88.46%	11.54%	60% or fewer	40% or more
Asian	90.00%	10.00%	90.00%	10.00%	83.33%	16.67%	60% or fewer	40% or more
NH/OPI	*	*	*	*	*	*	*	*
White	89.36%	10.64%	83.69%	16.31%	86.52%	13.48%	47.06%	52.94%
Hispanic	86.67%	13.33%	68.97%	31.03%	70.00%	30.00%	60% or fewer	40% or more
ME	73.68%	26.32%	70.27%	29.73%	67.57%	32.43%	75% or fewer	25% or more
EDS	80.95%	19.05%	76.83%	23.17%	75.90%	24.10%	33.33%	66.67%
Non-EDS	88.02%	11.98%	83.33%	16.67%	82.29%	17.71%	39.47%	60.53%
SWD	58.18%	41.82%	60.00%	40.00%	52.73%	47.27%	80% or fewer	20% or more
Non-SWD	92.76%	7.24%	86.76%	13.24%	87.27%	12.73%	45.65%	54.35%
LEP	63.64%	36.36%	61.90%	38.10%	54.55%	45.45%	75% or fewer	25% or more
Not LEP	87.80%	12.20%	83.00%	17.00%	82.61%	17.39%	42.59%	57.41%
Migrant	75% or more	25% or fewer	75% or more	25% or fewer	75% or more	25% or fewer	*	*
Not Migrant	85.39%	14.61%	80.75%	19.25%	79.70%	20.30%	37.29%	62.71%
Female	92.48%	7.52%	90.15%	9.85%	83.46%	16.54%	53.85%	46.15%
Male	79.72%	20.28%	73.24%	26.76%	77.46%	22.54%	25.00%	75.00%

* Results cannot be published without releasing personally identifiable information based upon the EED reporting protocol

** 2007-08 was the first year Science was administered for grades 4, 8 and 10 on the SBA.

SBA Mean Scale Score Comparison by NCLB Groups for Kasuun Elementary School								
	Reading		Writing		Mathematics		Science***	
	06-07	07-08	06-07	07-08	06-07	07-08	06-07	07-08
All Students	378.42	372.97	375.47	362.82	365.91	352.65	N/A	284.16
AF AM	376.90	336.78	363.90	332.22	355.00	287.89	N/A	*
AKNA/AI	354.33	355.27	348.92	357.19	359.59	358.38	N/A	301.60
Asian**	365.16	377.50	375.65	364.97	363.16	363.77	N/A	252.33
NH/OPI**	N/A	*	N/A	*	N/A	*	N/A	*
White	394.03	388.40	391.94	377.41	376.95	367.14	N/A	293.88
Hispanic	355.28	353.90	353.22	330.21	339.11	323.33	N/A	269.00
ME	352.52	348.32	332.19	343.22	331.67	324.62	N/A	281.88
EDS	356.02	360.98	348.66	349.54	344.16	338.64	N/A	281.21
Non-EDS	389.01	378.22	388.13	368.50	376.13	358.71	N/A	286.03
SWD	311.38	320.00	299.67	303.11	305.64	302.53	N/A	256.56
Non-SWD	391.95	386.16	390.76	377.82	378.02	365.18	N/A	293.76
LEP	354.64	321.32	353.09	299.24	354.80	309.64	N/A	235.25
Not LEP	383.09	377.45	379.86	368.10	368.14	356.39	N/A	291.41
Migrant	379.31	405.00	378.85	391.67	372.62	364.78	N/A	*
Not Migrant	378.38	371.90	375.29	361.85	365.57	352.24	N/A	284.63
Female	393.33	385.26	399.73	384.26	375.28	359.09	N/A	300.96
Male	364.79	361.55	353.28	342.90	357.40	346.62	N/A	272.03

* Results cannot be published without releasing personally identifiable information based upon the EED reporting protocol

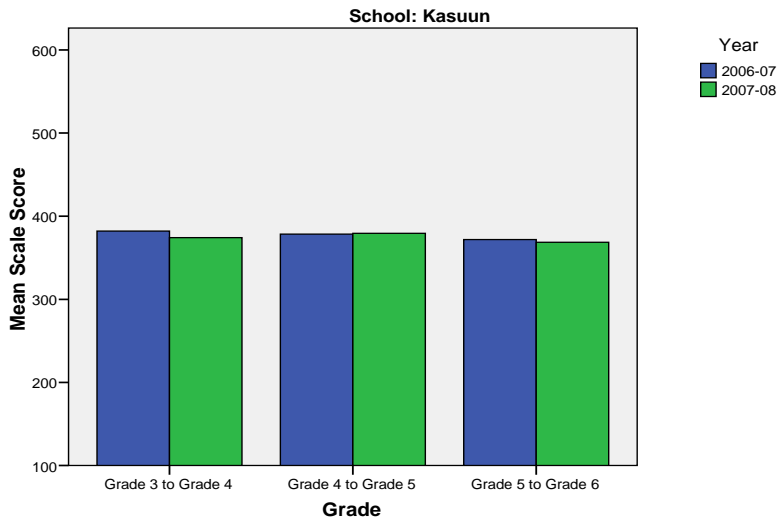
** Prior to 2007-08 the Asian category includes Native Hawaiian/Other Pacific Islander. In 2007-08 Native Hawaiian/Other Pacific Islander is a separate ethnic category.

*** 2007-08 was the first year Science was administered for grades 4, 8 and 10 on the SBA.

Kasuun Elementary School SBA Change Average Scale Score by NCLB Groups: Reading									
	Average Scale Score of Students Tested in District Both Years			Average Scale Score of Students Tested in District Both Years			Average Scale Score of Students Tested in District Both Years		
	Grade 3 in 06-07	Grade 4 in 07-08	Difference	Grade 4-in 06-07	Grade 5 in 07-08	Difference	Grade 5-in 06-07	Grade 6 in 07-08	Difference
All Students	381.97	374.10	-7.86	378.31	379.45	1.14	371.83	368.65	-3.18
AF AM	*	*	*	*	*	*	*	*	*
AKNA/AI	376.60	381.60	5.00	343.56	334.89	-8.67	358.38	364.13	5.75
Asian	338.17	349.17	11.00	412.00	421.20	9.20	368.60	387.70	19.10
NH/OPI	*	*	*	*	*	*	*	*	*
White	387.55	379.39	-8.15	401.09	402.24	1.15	378.77	375.23	-3.53
Hispanic	393.00	363.20	-29.80	330.57	335.43	4.86	360.83	345.50	-15.33
ME	387.00	379.86	-7.14	353.00	356.29	3.29	350.78	328.44	-22.33
EDS	376.91	364.70	-12.22	356.95	359.90	2.95	358.13	363.06	4.94
Non-EDS	385.19	380.11	-5.08	388.02	388.34	0.32	375.43	370.11	-5.31
SWD	315.53	323.33	7.80	285.33	294.56	9.22	301.67	306.44	4.78
Non-SWD	404.61	391.41	-13.20	393.53	393.35	-0.18	393.24	387.63	-5.61
LEP	325.63	334.13	8.50	*	*	*	*	*	*
Not LEP	390.80	380.37	-10.43	380.02	381.02	1.00	375.03	370.90	-4.12
Migrant	*	*	*	*	*	*	*	*	*
Not Migrant	380.82	374.14	-6.68	377.92	378.73	0.81	370.61	367.04	-3.57
Female	410.36	400.08	-10.28	380.89	384.17	3.28	386.44	381.72	-4.72
Male	361.09	355.00	-6.09	375.00	373.39	-1.61	359.00	357.17	-1.83

* Results cannot be published without releasing personally identifiable information based upon the EED reporting protocol

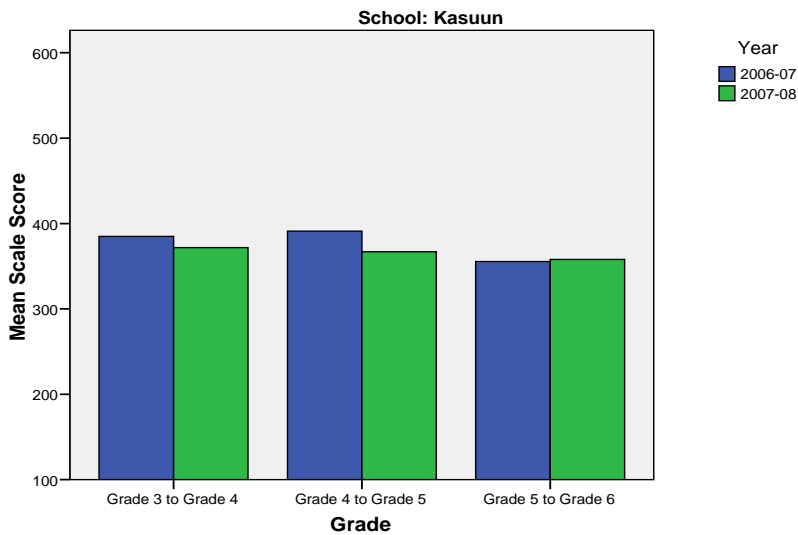
Change in Mean Scale Score in SBA Reading by Grade Between 2006-07 and 2007-08



Kasuun Elementary School SBA Change Average Scale Score by NCLB Groups: Writing									
	Average Scale Score of Students Tested in District Both Years			Average Scale Score of Students Tested in District Both Years			Average Scale Score of Students Tested in District Both Years		
	Grade 3 in 06-07	Grade 4 in 07-08	Difference	Grade 4- in 06-07	Grade 5 in 07-08	Difference	Grade 5- in 06-07	Grade 6 in 07-08	Difference
All Students	384.90	371.69	-13.21	391.14	366.89	-24.25	355.56	357.96	2.40
AF AM	*	*	*	*	*	*	*	*	*
AKNA/AI	373.20	372.20	-1.00	350.56	334.78	-15.78	369.63	377.50	7.88
Asian	339.17	326.17	-13.00	483.80	421.60	-62.20	371.80	381.40	9.60
NH/OPI	*	*	*	*	*	*	*	*	*
White	395.24	379.79	-15.45	412.24	386.09	-26.15	361.79	361.00	-0.79
Hispanic	*	*	*	330.71	311.86	-18.86	338.00	323.00	-15.00
ME	393.14	397.86	4.71	364.57	356.86	-7.71	299.89	316.00	16.11
EDS	382.82	363.86	-18.95	375.15	344.75	-30.40	346.06	341.13	-4.94
Non-EDS	386.17	376.47	-9.69	398.41	376.95	-21.45	358.05	362.38	4.33
SWD	318.80	320.67	1.87	279.67	275.56	-4.11	281.22	294.33	13.11
Non-SWD	407.95	389.49	-18.47	409.38	381.84	-27.55	378.24	377.37	-0.86
LEP	296.29	299.86	3.57	*	*	*	*	*	*
Not LEP	397.06	381.55	-15.51	393.75	367.92	-25.83	357.75	360.67	2.92
Migrant	*	*	*	*	*	*	*	*	*
Not Migrant	383.75	371.65	-12.09	390.40	366.21	-24.19	353.07	356.57	3.50
Female	423.13	410.79	-12.33	403.14	378.69	-24.44	378.58	385.72	7.14
Male	357.91	344.09	-13.82	375.71	351.71	-24.00	335.34	333.59	-1.76

* Results cannot be published without releasing personally identifiable information based upon the EED reporting protocol

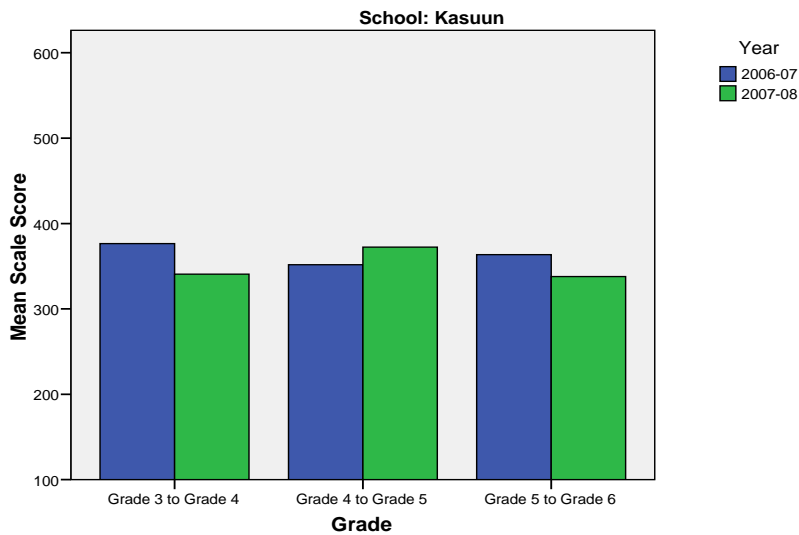
Change in Mean Scale Score in SBA Writing by Grade between 2006-07 and 2007-08



Kasuun Elementary School SBA Change Average Scale Score by NCLB Groups: Mathematics									
	Average Scale Score of Students Tested in District Both Years			Average Scale Score of Students Tested in District Both Years			Average Scale Score of Students Tested in District Both Years		
	Grade 3 in 06-07	Grade 4 in 07-08	Difference	Grade 4- in 06-07	Grade 5 in 07-08	Difference	Grade 5- in 06-07	Grade 6 in 07-08	Difference
All Students	376.44	340.71	-35.73	351.67	372.41	20.73	363.62	337.95	-25.68
AF AM	*	*	*	*	*	*	*	*	*
AKNA/AI	378.80	361.80	-17.00	328.89	356.67	27.78	375.25	351.75	-23.50
Asian	329.67	331.17	1.50	392.00	381.40	-10.60	391.90	378.50	-13.40
NH/OPI	*	*	*	*	*	*	*	*	*
White	385.64	349.09	-36.55	367.47	395.94	28.47	365.60	336.21	-29.40
Hispanic	384.00	324.40	-59.60	327.14	327.29	0.14	348.17	304.17	-44.00
ME	381.57	335.57	-46.00	328.43	345.57	17.14	318.56	305.11	-13.44
EDS	362.83	342.91	-19.91	327.70	335.70	8.00	360.56	331.63	-28.94
Non-EDS	385.14	339.31	-45.83	362.57	389.09	26.52	364.43	339.61	-24.82
SWD	332.40	317.20	-15.20	283.89	293.67	9.78	285.67	281.61	-4.06
Non-SWD	391.45	348.73	-42.73	362.76	385.29	22.53	387.41	355.14	-32.27
LEP	319.38	303.75	-15.63	*	*	*	*	*	*
Not LEP	385.39	346.51	-38.88	353.16	373.13	19.97	367.88	341.60	-26.27
Migrant	*	*	*	*	*	*	*	*	*
Not Migrant	376.04	340.82	-35.21	351.30	371.83	20.52	362.20	336.62	-25.58
Female	396.04	355.16	-40.88	350.81	368.42	17.61	379.17	350.00	-29.17
Male	362.03	330.09	-31.94	352.79	377.54	24.75	349.98	327.37	-22.61

* Results cannot be published without releasing personally identifiable information based upon the EED reporting protocol

Change in Mean Scale Score in SBA Mathematics by Grade between 2006-07 and 2007-08



Reading: SBA Results Compared for Kasuun Elementary School, District and State Grades 3 Through 6															
	% Advanced Proficient			% Proficient			% Below Proficient			% Far Below Proficient			% Tested		
	School	District	State	School	District	State	School	District	State	School	District	State	School	District	State
All Students	29.71%	39.70%	35.67%	56.16%	43.89%	45.50%	11.96%	11.60%	13.02%	2.17%	4.80%	5.80%	99.64%	98.15%	97.98%
AF AM	*	20.73%	22.99%	55.56%	54.18%	53.49%	*	17.79%	16.46%	*	7.30%	7.06%	100.00%	98.04%	97.49%
AKNA/AI	11.54%	20.23%	14.62%	76.92%	51.11%	48.17%	*	18.54%	24.83%	*	10.11%	12.37%	100.00%	96.88%	97.59%
Asian	36.67%	30.22%	28.26%	53.33%	48.71%	51.04%	*	15.32%	15.32%	*	5.75%	5.38%	100.00%	97.64%	97.67%
NH/OPI	*	14.67%	N/A	*	51.03%	N/A	*	24.59%	N/A	*	9.71%	N/A	100.00%	98.98%	N/A
White	36.17%	52.75%	47.28%	53.19%	38.06%	42.41%	*	6.69%	7.27%	*	2.50%	3.03%	99.30%	98.68%	98.28%
Hispanic	23.33%	32.35%	31.74%	63.33%	46.43%	48.60%	*	14.67%	13.66%	*	6.55%	6.00%	100.00%	97.14%	97.32%
ME	21.05%	33.26%	34.76%	52.63%	48.25%	47.75%	*	13.47%	12.80%	*	5.01%	4.70%	100.00%	98.15%	98.03%
EDS	23.81%	22.85%	21.47%	57.14%	49.71%	48.65%	*	19.04%	20.31%	*	8.40%	9.57%	98.82%	97.50%	96.44%
Not EDS	32.29%	51.44%	46.31%	55.73%	39.84%	43.15%	9.38%	6.42%	7.56%	2.60%	2.30%	2.98%	100.00%	98.61%	99.16%
SWD	7.27%	10.08%	9.29%	50.91%	37.10%	37.96%	32.73%	32.15%	31.20%	9.09%	20.67%	21.55%	98.21%	94.28%	93.60%
Non-SWD	35.29%	45.02%	40.09%	57.47%	45.12%	46.77%	*	7.91%	9.98%	*	1.95%	3.17%	100.00%	98.88%	98.75%
LEP	*	4.97%	3.12%	63.64%	39.93%	38.06%	36.36%	37.14%	38.40%	*	17.96%	20.42%	100.00%	94.25%	96.11%
Not LEP	32.28%	42.78%	39.95%	55.51%	44.25%	46.48%	9.84%	9.33%	9.68%	2.36%	3.64%	3.88%	99.61%	98.51%	98.23%
Migrant	55.56%	27.01%	17.29%	44.44%	50.34%	48.58%	*	16.44%	23.78%	*	6.21%	10.35%	100.00%	98.35%	98.50%
Not Migrant	28.84%	40.26%	36.97%	56.55%	43.61%	45.29%	12.36%	11.38%	12.26%	2.25%	4.74%	5.48%	99.63%	98.14%	97.94%
Female	33.83%	44.40%	39.45%	58.65%	43.41%	45.33%	*	8.75%	10.85%	*	3.44%	4.37%	100.00%	98.39%	98.31%
Male	25.87%	35.15%	32.09%	53.85%	44.37%	45.67%	17.48%	14.36%	15.08%	2.80%	6.13%	7.16%	99.31%	97.92%	97.66%

* Results cannot be published without releasing personally identifiable information based upon the EED reporting protocol

Writing: SBA Results Compared for Kasuun Elementary School, District and State Grades 3 Through 6															
	% Advanced Proficient			% Proficient			% Below Proficient			% Far Below Proficient			% Tested		
	School	District	State	School	District	State	School	District	State	School	District	State	School	District	State
All Students	25.55%	34.87%	30.49%	55.84%	44.25%	44.50%	17.52%	18.78%	22.32%	1.09%	2.10%	2.69%	98.92%	98.11%	97.96%
AF AM	*	20.71%	20.51%	66.67%	46.71%	48.68%	*	28.71%	27.18%	*	3.88%	3.63%	100.00%	98.15%	97.71%
AKNA/AI	11.54%	17.15%	12.11%	80.77%	45.31%	41.05%	*	33.38%	40.69%	*	4.15%	6.15%	100.00%	96.51%	97.64%
Asian	26.67%	30.17%	28.49%	63.33%	45.92%	45.93%	*	21.33%	23.31%	*	2.58%	2.27%	100.00%	97.56%	97.67%
NH/OPI	*	14.02%	N/A	*	42.89%	N/A	*	39.38%	N/A	*	3.71%	N/A	100.00%	99.18%	N/A
White	33.33%	45.85%	40.04%	50.35%	41.91%	44.71%	*	11.26%	13.97%	*	0.99%	1.28%	99.30%	98.66%	98.22%
Hispanic	13.79%	27.33%	27.00%	55.17%	47.25%	48.36%	*	22.54%	22.23%	*	2.88%	2.41%	96.67%	97.07%	97.36%
ME	16.22%	28.51%	29.14%	54.05%	47.68%	47.29%	*	21.31%	21.37%	*	2.51%	2.20%	97.37%	98.15%	97.96%
EDS	15.85%	18.92%	17.53%	60.98%	47.34%	45.15%	*	29.95%	32.95%	*	3.79%	4.37%	96.47%	97.50%	96.53%
Not EDS	29.69%	45.99%	40.21%	53.65%	42.10%	44.01%	*	10.99%	14.35%	*	0.92%	1.44%	100.00%	98.54%	99.06%
SWD	*	7.09%	6.94%	*	38.82%	37.02%	34.55%	45.96%	47.34%	5.45%	8.12%	8.69%	98.21%	94.28%	93.97%
Non-SWD	31.05%	39.86%	34.45%	55.71%	45.23%	45.76%	*	13.89%	18.11%	*	1.02%	1.69%	99.10%	98.83%	98.66%
LEP	*	4.71%	3.14%	61.90%	37.05%	30.66%	38.10%	50.57%	56.76%	*	7.67%	9.44%	95.45%	94.25%	96.18%
Not LEP	27.67%	37.55%	34.08%	55.34%	44.89%	46.32%	15.81%	15.96%	17.79%	1.19%	1.60%	1.81%	99.22%	98.47%	98.20%
Migrant	44.44%	21.44%	14.20%	55.56%	48.58%	42.55%	*	26.63%	38.57%	*	3.35%	4.68%	100.00%	98.51%	98.58%
Not Migrant	24.91%	35.46%	31.63%	55.85%	44.06%	44.64%	18.11%	18.43%	21.18%	1.13%	2.04%	2.55%	98.88%	98.09%	97.92%
Female	36.36%	42.63%	37.48%	53.79%	42.50%	43.42%	*	13.62%	17.40%	*	1.26%	1.70%	99.25%	98.32%	98.22%
Male	15.49%	27.36%	23.87%	57.75%	45.96%	45.52%	24.65%	23.78%	26.98%	2.11%	2.91%	3.63%	98.61%	97.90%	97.72%

* Results cannot be published without releasing personally identifiable information based upon the EED reporting protocol

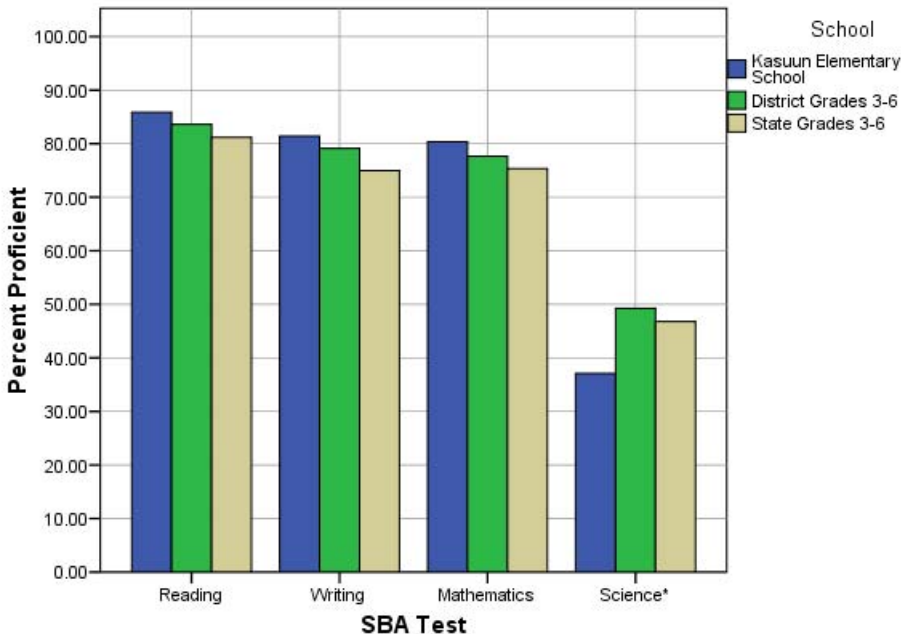
Mathematics: SBA Results Compared for Kasuun Elementary School, District and State Grades 3 Through 6															
	% Advanced Proficient			% Proficient			% Below Proficient			% Far Below Proficient			% Tested		
	School	District	State	School	District	State	School	District	State	School	District	State	School	District	State
All Students	31.27%	39.81%	36.08%	49.09%	37.84%	39.26%	14.55%	12.46%	13.78%	5.09%	9.88%	10.88%	99.28%	98.52%	98.12%
AF AM	*	19.48%	22.09%	44.44%	40.14%	41.60%	33.33%	20.19%	18.61%	*	20.19%	17.70%	100.00%	98.38%	97.78%
AKNA/AI	34.62%	23.20%	18.26%	53.85%	39.51%	39.14%	*	19.22%	21.79%	*	18.07%	20.81%	100.00%	96.96%	97.72%
Asian	40.00%	37.02%	34.29%	43.33%	41.20%	41.23%	*	13.76%	14.10%	*	8.03%	10.38%	100.00%	99.27%	98.99%
NH/OPI	*	18.52%	N/A	*	38.07%	N/A	*	20.16%	N/A	*	23.25%	N/A	100.00%	99.39%	N/A
White	38.30%	51.12%	45.75%	48.23%	35.15%	38.35%	10.64%	8.41%	9.81%	2.84%	5.32%	6.09%	99.30%	98.69%	98.17%
Hispanic	10.00%	31.85%	31.11%	60.00%	40.04%	42.19%	20.00%	15.02%	15.10%	10.00%	13.09%	11.60%	100.00%	98.66%	98.47%
ME	18.92%	33.75%	35.45%	48.65%	41.21%	40.61%	18.92%	13.93%	13.30%	13.51%	11.11%	10.64%	97.37%	98.26%	98.00%
EDS	21.69%	24.26%	23.31%	54.22%	41.50%	40.98%	19.28%	17.54%	18.60%	4.82%	16.70%	17.11%	97.65%	98.14%	96.77%
Not EDS	35.42%	50.70%	45.67%	46.88%	35.28%	37.96%	12.50%	8.91%	10.16%	5.21%	5.12%	6.21%	100.00%	98.79%	99.16%
SWD	7.27%	12.52%	12.06%	45.45%	31.53%	32.14%	29.09%	23.68%	23.60%	18.18%	32.27%	32.20%	98.21%	94.19%	93.99%
Non-SWD	37.27%	44.69%	40.12%	50.00%	38.97%	40.45%	10.91%	10.46%	12.13%	1.82%	5.88%	7.30%	99.55%	99.34%	98.85%
LEP	*	8.22%	6.05%	*	36.74%	34.10%	31.82%	24.50%	27.43%	13.64%	30.54%	32.42%	100.00%	97.95%	97.56%
Not LEP	33.20%	42.73%	40.09%	49.41%	37.94%	39.95%	13.04%	11.35%	11.96%	4.35%	7.98%	8.01%	99.22%	98.57%	98.19%
Migrant	33.33%	30.94%	22.37%	66.67%	43.65%	40.27%	*	14.21%	20.36%	*	11.20%	17.00%	100.00%	98.68%	98.54%
Not Migrant	31.20%	40.21%	37.05%	48.50%	37.58%	39.19%	15.04%	12.38%	13.31%	5.26%	9.83%	10.45%	99.25%	98.51%	98.09%
Female	33.83%	41.01%	36.83%	49.62%	38.32%	39.88%	14.29%	11.59%	13.34%	2.26%	9.09%	9.96%	100.00%	98.71%	98.31%
Male	28.87%	38.66%	35.38%	48.59%	37.38%	38.67%	14.79%	13.30%	14.20%	7.75%	10.66%	11.75%	98.61%	98.34%	97.94%

* Results cannot be published without releasing personally identifiable information based upon the EED reporting protocol

Science: SBA Results Compared for Kasuun Elementary School, District and State Grade 4															
	% Advanced Proficient			% Proficient			% Below Proficient			% Far Below Proficient			% Tested		
	School	District	State	School	District	State	School	District	State	School	District	State	School	District	State
All Students	9.68%	23.68%	22.1%	27.42%	25.57%	24.7%	46.77%	31.70%	31.3%	16.13%	19.06%	21.9%	98.41%	97.81%	95.35%
AF AM	*	9.18%	8.9%	*	18.84%	23.3%	*	39.13%	38.0%	*	32.85%	29.8%	100.00%	98.57%	94.49%
AKNA/AI	*	6.54%	6.8%	*	21.50%	14.2%	60.00%	42.99%	35.2%	*	28.97%	43.8%	100.00%	96.40%	94.98%
Asian	*	10.18%	13.4%	*	21.40%	19.4%	50.00%	39.30%	37.5%	*	29.12%	29.7%	100.00%	98.28%	97.39%
NH/OPI	*	6.57%	N/A	*	8.03%	N/A	*	34.31%	N/A	*	51.09%	N/A	N/A	98.56%	N/A
White	11.76%	36.40%	32.3%	35.29%	29.08%	29.9%	41.18%	25.33%	27.3%	11.76%	9.19%	10.5%	97.14%	97.87%	94.97%
Hispanic	*	16.17%	18.2%	*	26.15%	26.0%	*	32.08%	33.9%	*	25.61%	21.9%	100.00%	97.12%	96.39%
ME	*	16.06%	18.5%	*	26.12%	26.8%	62.50%	37.47%	35.9%	*	20.34%	18.7%	100.00%	98.32%	96.90%
EDS	*	8.34%	11.0%	*	22.44%	20.1%	54.17%	38.10%	34.7%	12.50%	31.12%	34.2%	96.00%	97.73%	94.99%
Not EDS	13.16%	35.00%	31.2%	26.32%	27.88%	28.5%	42.11%	26.97%	28.5%	18.42%	10.15%	11.9%	100.00%	97.87%	95.64%
SWD	*	8.38%	7.7%	*	16.38%	15.2%	62.50%	36.57%	36.6%	25.00%	38.67%	40.5%	94.12%	93.25%	91.70%
Non-SWD	13.04%	26.43%	24.7%	32.61%	27.22%	26.4%	41.30%	30.82%	30.4%	13.04%	15.53%	18.5%	100.00%	98.68%	96.04%
LEP	*	2.00%	1.5%	*	5.14%	3.8%	50.00%	34.00%	28.3%	50.00%	58.86%	66.5%	100.00%	96.15%	95.67%
Not LEP	11.11%	26.13%	25.2%	31.48%	27.88%	27.9%	46.30%	31.44%	31.8%	11.11%	14.55%	15.1%	98.18%	98.00%	95.30%
Migrant	*	9.70%	9.0%	*	26.87%	15.3%	*	39.55%	34.3%	*	23.88%	41.4%	100.00%	97.10%	97.32%
Not Migrant	10.17%	24.24%	23.0%	27.12%	25.51%	25.3%	45.76%	31.38%	31.1%	16.95%	18.86%	20.5%	98.33%	97.84%	95.21%
Female	15.38%	22.73%	20.8%	38.46%	25.78%	25.2%	*	33.63%	32.6%	*	17.87%	21.4%	100.00%	98.05%	95.43%
Male	*	24.61%	23.4%	*	25.36%	24.2%	52.78%	29.80%	30.1%	22.22%	20.23%	22.3%	97.30%	97.58%	95.27%

* Results cannot be published without releasing personally identifiable information based upon the EED reporting protocol

2007-08 SBA Results Compared for Kasuun Elementary School, District and State

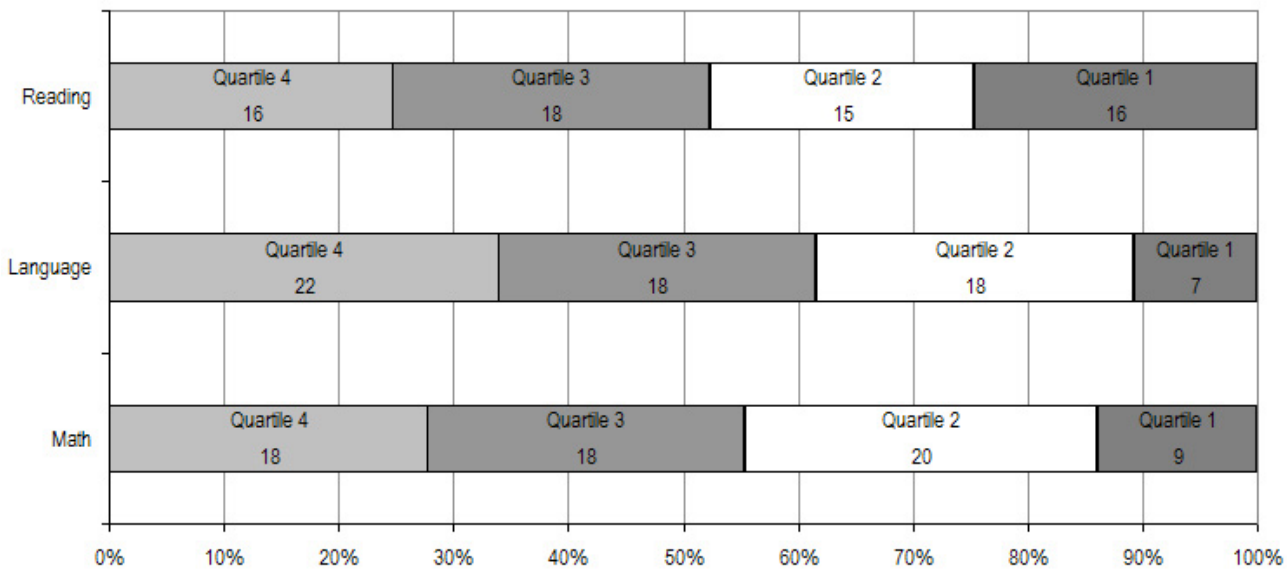


* 2007-08 was the first year Science was administered for grades 4, 8 and 10 on the SBA.

Kasuun Elementary School TerraNova Grade 5 Percent in Each Quartile								
Reading	Above Average		Average				Below Average	
	4th Quartile (76-99 percentile)		3rd Quartile (51-75 percentile)		2nd Quartile (26-50 percentile)		1st Quartile (1-25 percentile)	
	School	District	School	District	School	District	School	District
07-08	24.62%	25.65%	27.69%	24.08%	23.08%	23.73%	24.62%	26.55%
06-07	28.9%	33.1%	22.4%	26.1%	36.8%	23.6%	11.8%	17.2%
05-06	24.6%	30.4%	27.9%	26.8%	24.6%	24.5%	23.0%	18.3%
04-05	34.9%	29.2%	31.7%	27.6%	19.0%	24.5%	14.3%	18.7%
03-04	29.7%	30.6%	32.4%	26.9%	33.8%	24.2%	4.1%	18.3%
Language								
07-08	33.85%	26.79%	27.69%	27.20%	27.69%	24.12%	10.77%	21.89%
06-07	31.6%	34.7%	35.5%	26.9%	22.4%	21.4%	10.5%	17.0%
05-06	19.7%	34.0%	34.4%	26.5%	29.5%	22.0%	16.4%	17.5%
04-05	28.6%	32.1%	31.7%	28.3%	30.2%	21.2%	9.5%	18.4%
03-04	36.5%	34.1%	36.5%	26.5%	18.9%	21.7%	8.1%	17.7%
Mathematics								
07-08	27.69%	25.45%	27.69%	26.40%	30.77%	24.47%	13.85%	23.68%
06-07	19.7%	29.7%	39.5%	31.6%	25.0%	21.2%	15.8%	17.4%
05-06	14.8%	28.4%	29.5%	31.9%	27.9%	22.3%	27.9%	17.5%
04-05	20.6%	26.9%	30.2%	31.1%	34.9%	22.9%	14.3%	19.1%
03-04	23.0%	28.3%	41.9%	29.3%	18.9%	22.6%	16.2%	19.8%

The double bold line indicates a change from the TerraNova 2nd edition to the TerraNova 3rd edition.

2007-08 TerraNova 3rd Edition Grade 5 Percent and Count of Students in Each Quartile For Kasuun Elementary School



Climate Survey Results for Kasuun Elementary School

The Anchorage School District administered the School Climate and Connectedness Surveys in spring 2008 to students in grades 5-12, all school staff and parents/guardians of students in grades K-12. The surveys were done to provide schools with information about perceptions and experiences related to school climate for use in setting school goals and redirecting resources. In the spring of 2008 grades 3 and 4 students were involved in a pilot survey for measuring school climate and connectedness. The results are currently under review by the American Institutes for Research.

Respondents were asked to answer a series of questions that were related to a certain concept. For each item, there were five options from which to choose a response. The answer options ranged from strongly disagree (1) to strongly agree (5).

Student Survey Response Rate – Grades 5-12			
	Kasuun Elementary School	Overall Elementary Schools	District**
# Surveys Completed	136	5,579	21,629
# Reportable Surveys	119	4,969	18,654
# Students Enrolled*	149	6,331	28,945
Reportable Response Rate	79.87%	78.49%	64.45%

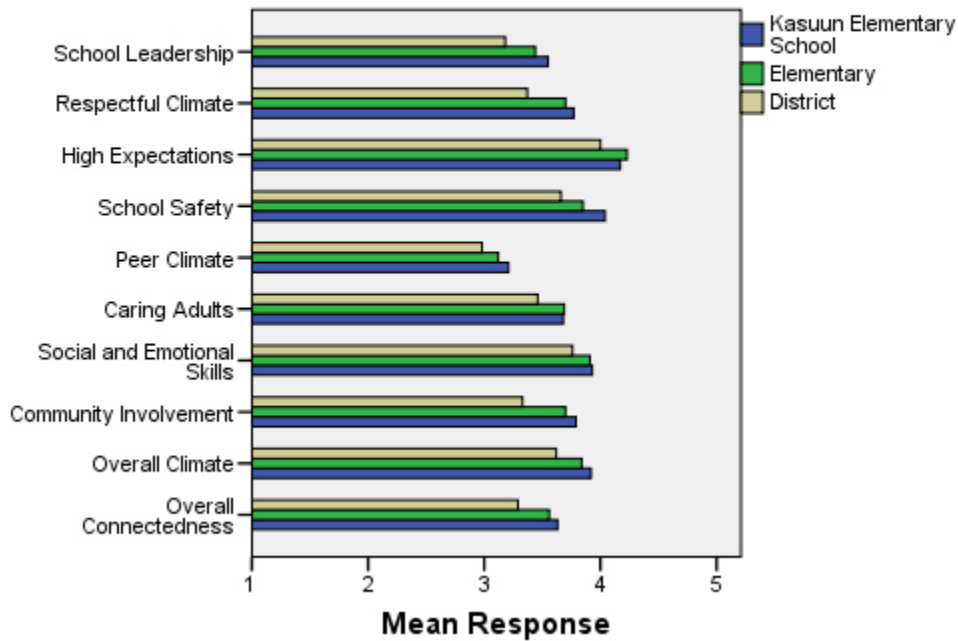
*Number enrolled as of April 1, 2008

**District data does not include KCC responses

Each question in the survey related to a factor or concept, and a score was calculated based on the mean response for the questions related to each factor. The factors measured in the survey were:

- **School Leadership and Student Involvement:** This factor reflects students’ feelings about the decision making of school leaders as well as student participation in the school governance. Students selected responses between 1 and 5 where 1 indicates a low level of school leadership and student involvement and 5 indicates a high level of school leadership and student involvement.
- **Respectful Climate:** This factor reflects students’ feelings about fairness of rules and respect for students’ contributions. Students selected responses between 1 and 5 where 1 indicates a lack of a respectful climate and 5 indicates a highly respectful climate for students.
- **High Expectations:** This factor reflects students’ feelings about their own expectations as well as those of adults in their school and community. Students selected responses between 1 and 5 where 1 indicates a lack of high expectations and 5 indicates a high level of high expectations.
- **School Safety:** This factor reflects students’ feelings about bullies and gangs at school as well as general crime and violence in the community. Students selected responses between 1 and 5 where 1 indicates a low level of school safety and 5 indicates a high level of school safety.
- **Peer Climate:** This factor reflects students’ feelings about how respectful students are to one another and how helpful students are to other students. Students selected responses between 1 and 5 where 1 indicates a more negative peer climate and 5 indicates a very positive peer climate at the school.
- **Caring Adults:** This factor reflects students’ feelings about how close they feel to adults in the school. Students selected responses between 1 and 5 where 1 indicates a lack of caring adult relationships and 5 indicates strong caring adult relationships at the school.
- **Social and Emotional Learning:** This factor reflects students’ ability to think about the consequences of their actions and to empathize with others. Students selected responses between 1 and 5 where 1 indicates that students at the school perceive themselves as having poorer social and emotional learning, and 5 indicates higher levels of social and emotional learning.
- **Community Involvement:** This factor reflects students’ feelings about how supportive and welcoming the school is with parents and the community. Students selected responses between 1 and 5 where 1 indicates a less supportive and welcoming environment and 5 indicates a more supportive and welcoming environment.
- **Overall Climate:** The overall climate score was computed as the mean of three scales: school leadership, high expectations and school safety.
- **Overall Connectedness:** Overall connectedness score was computed as a mean of four scales: respectful climate, peer climate, caring adults and community involvement.

Climate and Connectedness Student Survey - Kasuun



Student Survey Mean Response by Factors Related to School Climate - Overall District			
	Kasuun Elementary School	Overall Elementary Schools	District
School Leadership	3.55	3.44	3.18
Respectful Climate	3.77	3.70	3.37
High Expectations	4.17	4.23	4.00
School Safety	4.04	3.85	3.66
Peer Climate	3.21	3.12	2.98
Caring Adults	3.68	3.69	3.46
Social and Emotional Skills	3.93	3.91	3.76
Community Involvement	3.79	3.70	3.33
Overall Climate	3.92	3.84	3.62
Overall Connectedness	3.63	3.56	3.29

Range is from a low of 1 to a high of 5

Students were also asked to answer questions related to school danger. The following table provides the responses for those questions:

Student Survey Results of the School Danger Questions - Percent of Students Responding in Each Category					
	0 Times	1-2 Times	3-6 Times	7-12 Times	> 12 Times
Kasuun Elementary School					
Under the influence of drugs?	81.36%	15.25%	2.54%	0.85%	0.00%
Under the influence of alcohol?	95.73%	3.42%	0.00%	0.85%	0.00%
Destroy things (vandalism)?	42.86%	40.34%	10.92%	1.68%	4.20%
Get into fights?	24.37%	26.05%	24.37%	12.61%	12.61%
Steal things?	54.70%	29.91%	7.69%	1.71%	5.98%
Threaten or bully?	26.89%	26.05%	22.69%	12.61%	11.76%
Under the influence of inhalants?	81.51%	10.92%	4.20%	0.84%	2.52%
Carry weapons?	86.55%	10.08%	1.68%	0.00%	1.68%
Overall Elementary Schools					
Under the influence of drugs?	91.87%	5.65%	1.22%	0.31%	0.96%
Under the influence of alcohol?	91.42%	6.01%	1.16%	0.51%	0.90%
Destroy things (vandalism)?	46.82%	32.08%	12.45%	3.30%	5.36%
Get into fights?	22.32%	35.75%	22.56%	7.96%	11.41%
Steal things?	49.79%	27.92%	12.01%	4.33%	5.95%
Threaten or bully?	32.34%	28.83%	17.08%	7.78%	13.97%
Under the influence of inhalants?	71.03%	17.07%	6.14%	2.63%	3.12%
Carry weapons?	79.22%	15.35%	3.17%	0.59%	1.68%
District					
Under the influence of drugs?	60.45%	15.05%	9.54%	3.92%	11.04%
Under the influence of alcohol?	63.11%	16.37%	8.90%	4.43%	7.19%
Destroy things (vandalism)?	41.26%	29.47%	15.45%	5.88%	7.94%
Get into fights?	26.40%	35.20%	21.96%	7.11%	9.33%
Steal things?	44.80%	25.68%	13.81%	6.98%	8.74%
Threaten or bully?	32.21%	26.21%	16.68%	9.27%	15.63%
Under the influence of inhalants?	72.79%	14.21%	5.66%	2.48%	4.87%
Carry weapons?	69.45%	19.15%	5.34%	2.01%	4.06%

Student Survey Results of the Mean Factor Score by Ethnicity (Self-Reported)							
	AKNA/AI	AF AM	Hispanic	Asian/NH	White	Other	Multi-Ethnic
Kasuun Elementary School							
School Leadership	3.81	4.00	3.54	3.84	3.49	3.31	3.24
Respectful Climate	4.21	4.33	3.50	4.15	3.69	3.75	3.44
High Expectations	4.23	4.00	4.20	4.29	4.16	4.09	4.14
School Safety	3.94	4.40	3.11	3.84	4.16	4.13	4.56
Peer Climate	3.30	1.80	3.09	3.52	3.22	3.11	3.22
Caring Adults	3.91	4.20	3.43	3.67	3.69	3.60	3.53
Social and Emotional Skills	4.25	3.67	3.89	4.13	3.87	3.88	3.94
Community Involvement	4.08	***	3.76	3.73	3.79	3.49	3.76
Overall Climate	3.97	4.13	3.68	4.05	3.91	3.89	3.97
Overall Connectedness	3.89	***	3.44	3.71	3.64	3.49	3.51
Overall Elementary Schools							
School Leadership	3.56	3.50	3.52	3.55	3.37	3.44	3.42
Respectful Climate	3.75	3.60	3.66	3.72	3.71	3.69	3.63
High Expectations	4.12	4.23	4.23	4.22	4.26	4.19	4.25
School Safety	3.75	3.63	3.73	3.68	4.03	3.66	3.79
Peer Climate	3.12	2.94	3.12	3.18	3.16	3.05	3.05
Caring Adults	3.64	3.73	3.64	3.59	3.74	3.60	3.76
Social and Emotional Skills	3.86	3.84	3.91	3.95	3.93	3.90	3.89
Community Involvement	3.66	3.60	3.67	3.66	3.75	3.66	3.70
Overall Climate	3.81	3.79	3.84	3.81	3.89	3.76	3.82
Overall Connectedness	3.56	3.49	3.51	3.53	3.60	3.49	3.56
District							
School Leadership	3.33	3.14	3.19	3.28	3.14	3.17	3.15
Respectful Climate	3.48	3.18	3.32	3.39	3.39	3.37	3.33
High Expectations	3.98	3.94	3.96	4.02	4.02	4.00	4.01
School Safety	3.60	3.48	3.55	3.47	3.78	3.51	3.62
Peer Climate	3.01	2.85	2.94	3.05	3.00	2.92	2.93
Caring Adults	3.49	3.43	3.37	3.33	3.51	3.42	3.46
Social and Emotional Skills	3.73	3.66	3.73	3.81	3.78	3.75	3.74
Community Involvement	3.37	3.22	3.31	3.29	3.34	3.34	3.31
Overall Climate	3.64	3.52	3.57	3.59	3.65	3.56	3.60
Overall Connectedness	3.33	3.17	3.24	3.26	3.31	3.26	3.27

***Results can not be calculated because of missing responses

The response rate is not high enough to provide statistically reliable results for Kasuun Elementary School’s Staff Survey Results.

The response rate is not high enough to provide statistically reliable results for Kasuun Elementary School’s Parent/Guardian Survey Results.