

Kincaid Elementary School Overview

Statement of Program

Kincaid Elementary School promotes a positive educational environment based on pride, respect and responsibility. State and Anchorage School District standards establish the core academic curricula for our students. Kincaid's school community places equal importance on the development of good citizenship and responsible social conduct. Our students are well noted for their problem-solving talents and positive social skills that extend well beyond the classroom and into the community.

The student body, faculty and staff of Kincaid celebrate a unique diversity that embraces the gifts and talents of all students. From our intensive-needs children to those that represent our gifted-talented population and everyone in between, Kincaid takes great pride in its learning climate - one that teaches acceptance while fostering confidence, integrity, and empathy for others.

Challenges are accepted as learning opportunities that provide personal growth and enrichment. At Kincaid it is widely understood that people represent the key element to accomplishing learned success. All members of our school community play an essential role, none more important than another. We are most appreciative of the support received from our volunteers, the loyal dedication and guidance of district representatives and administrators, and the Anchorage community at large. We are, indeed, proud members of the Anchorage School District.

From the School Report Card

School Goals	
Goal	Level of Achievement
The number of students with disabilities rated proficient on the state language arts assessment will increase from 43.6 to 54.6 percent.	Partially Attained
The number of low-income students rated proficient on the state language arts assessment will increase from 75 to 80 percent.	Partially Attained

From the School Report Card

Budget*	
2006-07 Actual Expenditures	\$2,802,232
2007-08 Revised Budgeted Amount	\$3,040,229
2008-09 Proposed Budget	\$2,847,467

*Dollars budgeted or expended are general fund only
From IFAS

Kincaid Elementary School Characteristics			
	School	District	Source of Information
Membership	465	48,858	Fall OASIS
Capacity	96.87%	N/A	2008-18 ASD Capital Improvement Plan
Attendance Rate	93.69%	92.83%	NCLB Summer Data Collection
Retention Rate K-8	0.21%	0.60%	SMS and NCLB Summer Data Collection
Transiency Rate	13.60%	26.07%	NCLB Summer Data Collection
Economically Disadvantaged	79	17,717	Fall OASIS
Average Weekly Volunteer Hours	129	4,660	Department of Education Report Card Report
Students Taking the Alternate Assessment	13	228	SMS
Change in Enrollment	-9.88%	-0.76%	Fall Oasis

Teacher Qualification				
Number of Teachers	Percent Fully Licensed	Percent With Advanced Degrees	Number Nationally Board Certified	Percent of Classes Taught by "Highly Qualified Teachers"
38	100.00%	42.10%	0	100.00%

Kincaid Elementary School Business Partnerships
Tastee Freez; Kulis Air National Guard Base; Anchorage Sand & Gravel

From the School Report Card

Ethnicity Report							
African-American/Black	Alaska Native/American Indian	Asian	Native Hawaiian/Other Pacific Islander	White	Hispanic	Multi-Ethnic	Total
10	43	28	10	291	33	50	465

From Fall Oasis

Full Academic Year		
Students Enrolled	Students Enrolled for FAY	Percent FAY
466	440	94.42%

From participation file (Grades 3-10)

**Kincaid Elementary School
2007-08 Adequate Yearly Progress
Status Report**

Meets AYP under Safe Harbor

AMO For Language Arts: 77.18%
AMO For Mathematics: 66.09%

Group	Participation Rate				"FAY" (D) Tested & Enrolled "FAY"	Language Arts Performance				Mathematics Performance			
	(A) Number Enrolled	(B) Number Tested	Participation Rate (%)	(C) Participation Rate Met		(E) Proficient on LA	(F) Percent Proficient on LA	(G) LA Target	(H) Met AMO for LA	(I) Proficient on Mathematics	(J) Percent Proficient in Mathematics	(K) Mathematics Target	(L) Met AMO for Mathematics
All Students	287	286	99.7%	Yes	274	239	87.2%	71.3%	Yes	235	85.8%	59.4%	Yes
AF AM	7	7	N/A	N/A	N/A	N/A	N/A	N/A	N/A	N/A	N/A	N/A	N/A
AKNA/AI	27	27	100%	Yes	27	23	85.2%	58.4%	Yes	***	≥90%	44.9%	Yes
Asian/NH/OPI	20	20	N/A	N/A	N/A	N/A	N/A	N/A	N/A	N/A	N/A	N/A	N/A
White	182	181	99.5%	Yes	174	161	92.5%	69.8%	Yes	158	90.8%	57.7%	Yes
Hispanic	21	21	100%	Yes	N/A	N/A	N/A	N/A	N/A	N/A	N/A	N/A	N/A
ME	30	30	100%	Yes	27	22	81.5%	58.4%	Yes	21	77.8%	44.9%	Yes
EDS	43	43	100%	Yes	40	30	75%	61.7%	Yes	31	77.5%	48.6%	Yes
SWD	51	51	100%	Yes	50	25	50%	63.4%	Yes-SH	23	46%	50.5%	Yes-SH
LEP	21	21	100%	Yes	N/A	N/A	N/A	N/A	N/A	N/A	N/A	N/A	N/A

Attendance Rate: Met

93.7% (Threshold is 85%)

N/A is used to indicate:

- (1) Subgroups with 20 or fewer students enrolled on the first day of testing shall not be included in participation rate calculation.
- (2) Subgroups with 25 or fewer students enrolled for the "full academic year" shall not have the performance score computed.

* For the groups where the number enrolled is less than or equal to 40, participation is met when no more than two miss the test. Groups can also meet this target using the average of the past two or three years.

** When a group achieves a "Yes" without meeting the listed target, it has done so using either the 99% confidence interval or Safe Harbor.

*** The results cannot be published without releasing personally identifiable information based upon the EED reporting protocol.

This document was prepared by the ASD Assessment and Evaluation Department.

7/10/2008

Kincaid Elementary School
2007-08 Adequate Yearly Progress
Growth Report

The AYP growth reports are generated by the Alaska State Department of Education and Early Development. The reports can be found online at: http://www.asdk12.org/depts/assess_eval/AYP/State_ASD_AYG_0708.pdf

SBA Proficiency Comparison by Grade for Kincaid Elementary School																
	Reading Percent Proficient				Writing Percent Proficient				Mathematics Percent Proficient				Science* Percent Proficient			
	04-05	05-06	06-07	07-08	04-05	05-06	06-07	07-08	04-05	05-06	06-07	07-08	04-05	05-06	06-07	07-08
All Students	91.95%	91.88%	91.64%	90.48%	91.02%	91.56%	88.96%	87.87%	89.85%	89.29%	91.58%	88.60%	N/A	N/A	N/A	67.80%
Grade 3	94.29%	90.00%	87.14%	88.24%	85.71%	88.57%	80.00%	85.07%	87.14%	90.00%	82.86%	88.06%	N/A	N/A	N/A	N/A
Grade 4	91.01%	90.91%	90.54%	86.44%	92.13%	93.51%	91.89%	86.44%	89.89%	89.61%	93.15%	81.36%	N/A	N/A	N/A	67.80%
Grade 5	92.11%	93.18%	91.55%	93.15%	95% or more	89.77%	91.55%	86.30%	92.11%	89.77%	90.00%	91.78%	N/A	N/A	N/A	N/A
Grade 6	90.91%	93.15%	96.43%	93.15%	88.64%	94.52%	91.67%	93.15%	90.00%	87.67%	95% or more	91.78%	N/A	N/A	N/A	N/A

* 2007-08 was the first year Science was administered for grades 4, 8 and 10 on the SBA.

SBA Proficient & Not Proficient by NCLB Groups for Kincaid Elementary School								
	Reading		Writing		Mathematics		Science**	
	Percent Proficient	Percent Not Proficient	Percent Proficient	Percent Not Proficient	Percent Proficient	Percent Not Proficient	Percent Proficient	Percent Not Proficient
All Students	90.48%	9.52%	87.87%	12.13%	88.60%	11.40%	67.80%	32.20%
AF AM	60% or more	40% or fewer	60% or more	40% or fewer	40% or fewer	60% or more	*	*
AKNA/AI	85.19%	14.81%	77.78%	22.22%	90% or more	10% or fewer	50.00%	50.00%
Asian	76.92%	23.08%	80% or more	20% or fewer	80% or more	20% or fewer	*	*
NH/OPI	60% or more	40% or fewer	60% or more	40% or fewer	60% or more	40% or fewer	*	*
White	95.43%	4.57%	92.53%	7.47%	93.10%	6.90%	83.33%	16.67%
Hispanic	78.95%	21.05%	84.21%	15.79%	78.95%	21.05%	57.14%	42.86%
ME	85.71%	14.29%	82.14%	17.86%	78.57%	21.43%	42.86%	57.14%
EDS	78.05%	21.95%	70.73%	29.27%	78.05%	21.95%	45.45%	54.55%
Non-EDS	92.67%	7.33%	90.91%	9.09%	90.48%	9.52%	72.92%	27.08%
SWD	44.83%	55.17%	44.83%	55.17%	44.83%	55.17%	75% or fewer	25% or more
Non-SWD	95.90%	4.10%	93.00%	7.00%	93.83%	6.17%	76.47%	23.53%
LEP	40% or fewer	60% or more	40% or fewer	60% or more	50.00%	50.00%	*	*
Not LEP	92.13%	7.87%	89.10%	10.90%	89.47%	10.53%	67.80%	32.20%
Migrant	75% or more	25% or fewer	75% or more	25% or fewer	75% or more	25% or fewer	*	*
Not Migrant	90.53%	9.47%	88.21%	11.79%	88.97%	11.03%	70.91%	29.09%
Female	91.47%	8.53%	93.80%	6.20%	89.92%	10.08%	72.00%	28.00%
Male	89.58%	10.42%	82.52%	17.48%	87.41%	12.59%	64.71%	35.29%

* Results cannot be published without releasing personally identifiable information based upon the EED reporting protocol

** 2007-08 was the first year Science was administered for grades 4, 8 and 10 on the SBA.

SBA Mean Scale Score Comparison by NCLB Groups for Kincaid Elementary School								
	Reading		Writing		Mathematics		Science***	
	06-07	07-08	06-07	07-08	06-07	07-08	06-07	07-08
All Students	410.23	406.37	400.39	400.35	395.46	389.70	N/A	337.34
AF AM	380.75	357.40	*	373.80	*	303.60	N/A	*
AKNA/AI	356.59	377.00	345.50	361.37	355.32	368.00	N/A	298.67
Asian**	377.54	364.08	382.65	382.54	380.62	369.15	N/A	*
NH/OPI**	N/A	378.00	N/A	370.33	N/A	369.50	N/A	*
White	423.98	421.59	415.41	413.26	408.38	402.60	N/A	369.81
Hispanic	426.00	392.16	414.10	389.89	416.80	383.53	N/A	328.71
ME	405.68	383.71	375.08	384.21	369.68	363.89	N/A	266.00
EDS	377.95	370.24	356.74	359.90	361.54	347.56	N/A	291.09
Non-EDS	418.51	412.76	411.58	407.53	404.23	397.18	N/A	347.94
SWD	309.32	301.90	291.13	305.62	306.00	295.17	N/A	259.00
Non-SWD	421.91	418.79	413.03	411.65	405.89	400.98	N/A	349.63
LEP	357.14	301.83	349.09	319.17	354.95	318.50	N/A	*
Not LEP	414.45	408.72	404.47	402.18	398.71	391.31	N/A	337.34
Migrant	380.17	395.33	347.00	380.22	349.42	354.33	N/A	*
Not Migrant	411.49	406.75	402.62	401.04	397.40	390.91	N/A	342.84
Female	412.54	411.29	414.14	414.49	393.44	387.15	N/A	357.04
Male	408.00	401.97	387.09	387.59	397.45	392.01	N/A	322.85

* Results cannot be published without releasing personally identifiable information based upon the EED reporting protocol

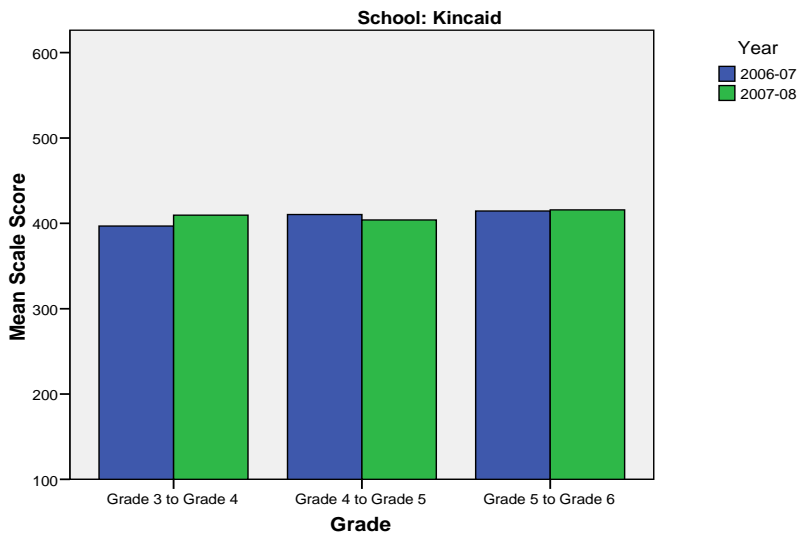
** Prior to 2007-08 the Asian category includes Native Hawaiian/Other Pacific Islander. In 2007-08 Native Hawaiian/Other Pacific Islander is a separate ethnic category.

*** 2007-08 was the first year Science was administered for grades 4, 8 and 10 on the SBA.

Kincaid Elementary School SBA Change Average Scale Score by NCLB Groups: Reading									
	Average Scale Score of Students Tested in District Both Years			Average Scale Score of Students Tested in District Both Years			Average Scale Score of Students Tested in District Both Years		
	Grade 3 in 06-07	Grade 4 in 07-08	Difference	Grade 4-in 06-07	Grade 5 in 07-08	Difference	Grade 5-in 06-07	Grade 6 in 07-08	Difference
All Students	396.80	409.59	12.79	410.24	403.91	-6.33	414.35	415.71	1.35
AF AM	*	*	*	*	*	*	*	*	*
AKNA/AI	363.50	396.83	33.33	338.38	340.88	2.50	379.67	364.67	-15.00
Asian	*	*	*	411.60	394.20	-17.40	*	*	*
NH/OPI	*	*	*	*	*	*	*	*	*
White	417.64	437.94	20.30	425.50	417.74	-7.76	435.02	439.17	4.15
Hispanic	394.71	392.00	-2.71	*	*	*	406.33	412.50	6.17
ME	361.00	349.14	-11.86	416.17	421.17	5.00	407.60	400.70	-6.90
EDS	370.64	380.55	9.91	382.57	353.43	-29.14	375.22	364.44	-10.78
Non-EDS	403.20	416.69	13.49	413.47	409.80	-3.67	420.32	423.53	3.20
SWD	302.75	297.88	-4.88	300.50	315.83	15.33	300.00	298.83	-1.17
Non-SWD	412.48	428.21	15.73	421.03	412.57	-8.46	425.42	427.02	1.60
LEP	*	*	*	*	*	*	*	*	*
Not LEP	396.80	409.59	12.79	410.24	403.91	-6.33	421.82	422.82	1.00
Migrant	*	*	*	*	*	*	*	*	*
Not Migrant	402.00	412.88	10.88	410.14	404.50	-5.64	413.98	415.29	1.30
Female	418.08	440.44	22.36	393.58	399.61	6.03	408.50	414.66	6.16
Male	379.65	384.71	5.06	424.58	407.61	-16.97	419.56	416.64	-2.92

* Results cannot be published without releasing personally identifiable information based upon the EED reporting protocol

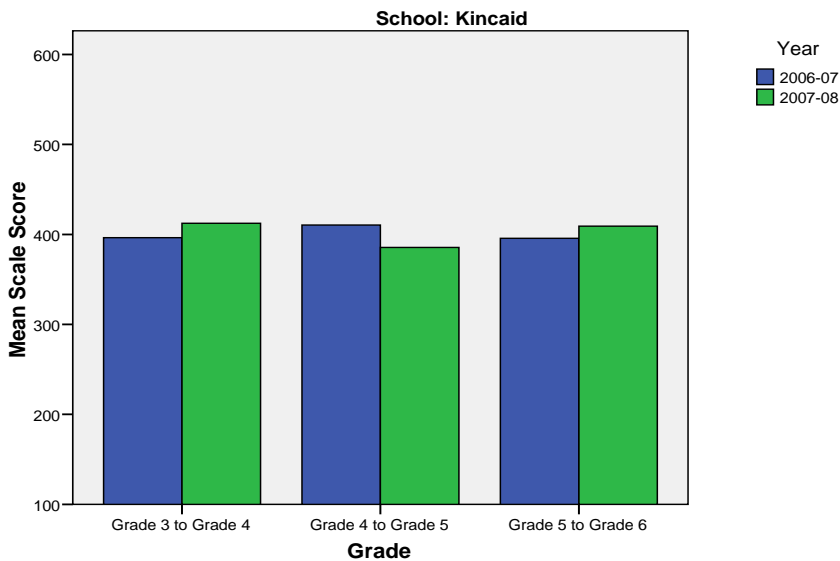
Change in Mean Scale Score in SBA Reading by Grade Between 2006-07 and 2007-08



Kincaid Elementary School SBA Change Average Scale Score by NCLB Groups: Writing									
	Average Scale Score of Students Tested in District Both Years			Average Scale Score of Students Tested in District Both Years			Average Scale Score of Students Tested in District Both Years		
	Grade 3 in 06-07	Grade 4 in 07-08	Difference	Grade 4- in 06-07	Grade 5 in 07-08	Difference	Grade 5- in 06-07	Grade 6 in 07-08	Difference
All Students	396.36	412.34	15.98	410.37	385.42	-24.96	395.63	409.12	13.49
AF AM	*	*	*	*	*	*	*	*	*
AKNA/AI	353.83	383.00	29.17	346.13	319.50	-26.63	344.17	345.67	1.50
Asian	*	*	*	435.60	394.40	-41.20	*	*	*
NH/OPI	*	*	*	*	*	*	*	*	*
White	417.76	437.79	20.03	425.14	397.88	-27.26	415.93	425.44	9.51
Hispanic	385.29	394.14	8.86	*	*	*	390.67	412.33	21.67
ME	376.00	361.86	-14.14	422.33	392.33	-30.00	395.20	410.20	15.00
EDS	379.00	363.73	-15.27	343.71	333.57	-10.14	357.78	352.22	-5.56
Non-EDS	400.60	424.22	23.62	418.15	391.47	-26.68	401.41	417.80	16.39
SWD	289.38	306.88	17.50	321.50	337.17	15.67	303.17	286.67	-16.50
Non-SWD	414.19	429.92	15.73	419.11	390.16	-28.95	404.58	420.97	16.39
LEP	*	*	*	*	*	*	*	*	*
Not LEP	396.36	412.34	15.98	410.37	385.42	-24.96	401.74	415.28	13.54
Migrant	*	*	*	*	*	*	*	*	*
Not Migrant	401.33	418.21	16.88	410.48	386.11	-24.38	396.14	408.97	12.83
Female	430.88	440.28	9.40	412.61	385.48	-27.13	400.94	417.97	17.03
Male	368.52	389.81	21.29	408.44	385.36	-23.08	390.92	401.25	10.33

* Results cannot be published without releasing personally identifiable information based upon the EED reporting protocol

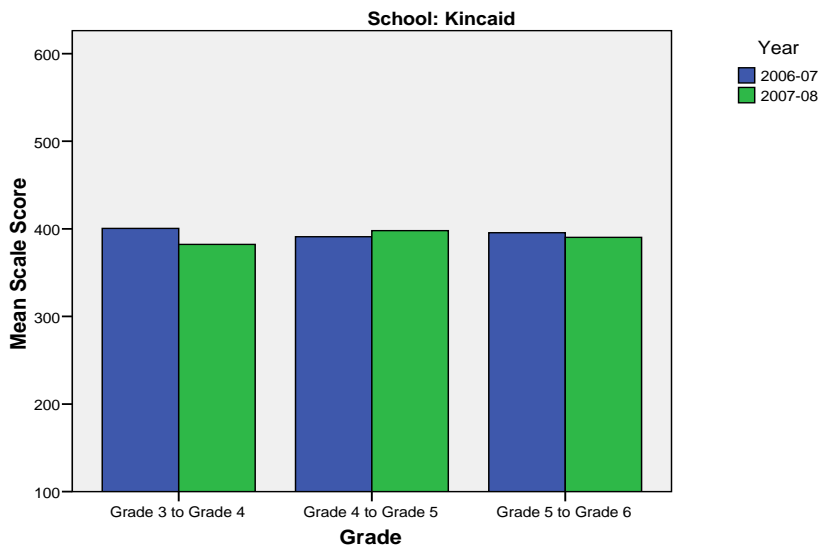
Change in Mean Scale Score in SBA Writing by Grade between 2006-07 and 2007-08



Kincaid Elementary School SBA Change Average Scale Score by NCLB Groups: Mathematics									
	Average Scale Score of Students Tested in District Both Years			Average Scale Score of Students Tested in District Both Years			Average Scale Score of Students Tested in District Both Years		
	Grade 3 in 06-07	Grade 4 in 07-08	Difference	Grade 4- in 06-07	Grade 5 in 07-08	Difference	Grade 5- in 06-07	Grade 6 in 07-08	Difference
All Students	400.43	382.20	-18.23	391.00	398.01	7.01	395.54	390.33	-5.21
AF AM	*	*	*	*	*	*	*	*	*
AKNA/AI	375.33	387.33	12.00	345.75	346.63	0.88	367.50	349.17	-18.33
Asian	*	*	*	392.20	389.40	-2.80	*	*	*
NH/OPI	*	*	*	*	*	*	*	*	*
White	427.73	402.82	-24.91	404.95	412.33	7.38	413.53	406.90	-6.63
Hispanic	385.57	359.57	-26.00	*	*	*	406.00	423.00	17.00
ME	352.00	334.57	-17.43	397.00	392.17	-4.83	387.10	370.10	-17.00
EDS	363.91	353.09	-10.82	357.43	345.00	-12.43	363.22	346.89	-16.33
Non-EDS	409.36	389.31	-20.04	394.92	404.20	9.28	400.55	397.07	-3.48
SWD	296.25	285.00	-11.25	293.33	331.67	38.33	299.17	297.50	-1.67
Non-SWD	417.79	398.40	-19.40	400.61	404.54	3.93	405.02	399.46	-5.56
LEP	*	*	*	*	*	*	*	*	*
Not LEP	400.43	382.20	-18.23	391.00	398.01	7.01	401.47	394.73	-6.73
Migrant	*	*	*	*	*	*	*	*	*
Not Migrant	407.35	387.31	-20.04	390.70	398.73	8.03	395.20	389.54	-5.66
Female	420.64	396.44	-24.20	365.10	385.10	20.00	386.31	383.41	-2.91
Male	384.13	370.71	-13.42	413.31	409.14	-4.17	403.97	396.66	-7.31

* Results cannot be published without releasing personally identifiable information based upon the EED reporting protocol

Change in Mean Scale Score in SBA Mathematics by Grade between 2006-07 and 2007-08



Reading: SBA Results Compared for Kincaid Elementary School, District and State Grades 3 Through 6															
	% Advanced Proficient			% Proficient			% Below Proficient			% Far Below Proficient			% Tested		
	School	District	State	School	District	State	School	District	State	School	District	State	School	District	State
All Students	54.58%	39.70%	35.67%	35.90%	43.89%	45.50%	7.33%	11.60%	13.02%	2.20%	4.80%	5.80%	95.12%	98.15%	97.98%
AF AM	*	20.73%	22.99%	*	54.18%	53.49%	*	17.79%	16.46%	*	7.30%	7.06%	71.43%	98.04%	97.49%
AKNA/AI	37.04%	20.23%	14.62%	48.15%	51.11%	48.17%	*	18.54%	24.83%	*	10.11%	12.37%	100.00%	96.88%	97.59%
Asian	23.08%	30.22%	28.26%	53.85%	48.71%	51.04%	*	15.32%	15.32%	*	5.75%	5.38%	92.86%	97.64%	97.67%
NH/OPI	50.00%	14.67%	N/A	*	51.03%	N/A	*	24.59%	N/A	*	9.71%	N/A	100.00%	98.98%	N/A
White	62.29%	52.75%	47.28%	33.14%	38.06%	42.41%	*	6.69%	7.27%	*	2.50%	3.03%	96.15%	98.68%	98.28%
Hispanic	52.63%	32.35%	31.74%	26.32%	46.43%	48.60%	*	14.67%	13.66%	*	6.55%	6.00%	90.48%	97.14%	97.32%
ME	42.86%	33.26%	34.76%	42.86%	48.25%	47.75%	*	13.47%	12.80%	*	5.01%	4.70%	93.33%	98.15%	98.03%
EDS	36.59%	22.85%	21.47%	41.46%	49.71%	48.65%	*	19.04%	20.31%	*	8.40%	9.57%	95.35%	97.50%	96.44%
Not EDS	57.76%	51.44%	46.31%	34.91%	39.84%	43.15%	5.60%	6.42%	7.56%	1.72%	2.30%	2.98%	95.08%	98.61%	99.16%
SWD	*	10.08%	9.29%	*	37.10%	37.96%	34.48%	32.15%	31.20%	20.69%	20.67%	21.55%	69.05%	94.28%	93.60%
Non-SWD	60.25%	45.02%	40.09%	35.66%	45.12%	46.77%	*	7.91%	9.98%	*	1.95%	3.17%	99.59%	98.88%	98.75%
LEP	*	4.97%	3.12%	*	39.93%	38.06%	66.67%	37.14%	38.40%	*	17.96%	20.42%	75.00%	94.25%	96.11%
Not LEP	55.43%	42.78%	39.95%	36.70%	44.25%	46.48%	5.99%	9.33%	9.68%	1.87%	3.64%	3.88%	95.70%	98.51%	98.23%
Migrant	44.44%	27.01%	17.29%	44.44%	50.34%	48.58%	*	16.44%	23.78%	*	6.21%	10.35%	100.00%	98.35%	98.50%
Not Migrant	54.92%	40.26%	36.97%	35.61%	43.61%	45.29%	7.20%	11.38%	12.26%	2.27%	4.74%	5.48%	94.96%	98.14%	97.94%
Female	57.36%	44.40%	39.45%	34.11%	43.41%	45.33%	6.20%	8.75%	10.85%	2.33%	3.44%	4.37%	96.99%	98.39%	98.31%
Male	52.08%	35.15%	32.09%	37.50%	44.37%	45.67%	8.33%	14.36%	15.08%	2.08%	6.13%	7.16%	93.51%	97.92%	97.66%

* Results cannot be published without releasing personally identifiable information based upon the EED reporting protocol

Writing: SBA Results Compared for Kincaid Elementary School, District and State Grades 3 Through 6															
	% Advanced Proficient			% Proficient			% Below Proficient			% Far Below Proficient			% Tested		
	School	District	State	School	District	State	School	District	State	School	District	State	School	District	State
All Students	50.37%	34.87%	30.49%	37.50%	44.25%	44.50%	11.03%	18.78%	22.32%	1.10%	2.10%	2.69%	94.77%	98.11%	97.96%
AF AM	*	20.71%	20.51%	*	46.71%	48.68%	*	28.71%	27.18%	*	3.88%	3.63%	71.43%	98.15%	97.71%
AKNA/AI	22.22%	17.15%	12.11%	55.56%	45.31%	41.05%	*	33.38%	40.69%	*	4.15%	6.15%	100.00%	96.51%	97.64%
Asian	46.15%	30.17%	28.49%	38.46%	45.92%	45.93%	*	21.33%	23.31%	*	2.58%	2.27%	92.86%	97.56%	97.67%
NH/OPI	50.00%	14.02%	N/A	*	42.89%	N/A	*	39.38%	N/A	*	3.71%	N/A	100.00%	99.18%	N/A
White	54.60%	45.85%	40.04%	37.93%	41.91%	44.71%	*	11.26%	13.97%	*	0.99%	1.28%	95.60%	98.66%	98.22%
Hispanic	57.89%	27.33%	27.00%	26.32%	47.25%	48.36%	*	22.54%	22.23%	*	2.88%	2.41%	90.48%	97.07%	97.36%
ME	50.00%	28.51%	29.14%	32.14%	47.68%	47.29%	*	21.31%	21.37%	*	2.51%	2.20%	93.33%	98.15%	97.96%
EDS	29.27%	18.92%	17.53%	41.46%	47.34%	45.15%	*	29.95%	32.95%	*	3.79%	4.37%	95.35%	97.50%	96.53%
Not EDS	54.11%	45.99%	40.21%	36.80%	42.10%	44.01%	*	10.99%	14.35%	*	0.92%	1.44%	94.67%	98.54%	99.06%
SWD	*	7.09%	6.94%	37.93%	38.82%	37.02%	48.28%	45.96%	47.34%	*	8.12%	8.69%	69.05%	94.28%	93.97%
Non-SWD	55.56%	39.86%	34.45%	37.45%	45.23%	45.76%	*	13.89%	18.11%	*	1.02%	1.69%	99.18%	98.83%	98.66%
LEP	*	4.71%	3.14%	*	37.05%	30.66%	66.67%	50.57%	56.76%	*	7.67%	9.44%	75.00%	94.25%	96.18%
Not LEP	51.13%	37.55%	34.08%	37.97%	44.89%	46.32%	9.77%	15.96%	17.79%	1.13%	1.60%	1.81%	95.34%	98.47%	98.20%
Migrant	44.44%	21.44%	14.20%	33.33%	48.58%	42.55%	*	26.63%	38.57%	*	3.35%	4.68%	100.00%	98.51%	98.58%
Not Migrant	50.57%	35.46%	31.63%	37.64%	44.06%	44.64%	10.65%	18.43%	21.18%	1.14%	2.04%	2.55%	94.60%	98.09%	97.92%
Female	58.91%	42.63%	37.48%	34.88%	42.50%	43.42%	*	13.62%	17.40%	*	1.26%	1.70%	96.99%	98.32%	98.22%
Male	42.66%	27.36%	23.87%	39.86%	45.96%	45.52%	*	23.78%	26.98%	*	2.91%	3.63%	92.86%	97.90%	97.72%

* Results cannot be published without releasing personally identifiable information based upon the EED reporting protocol

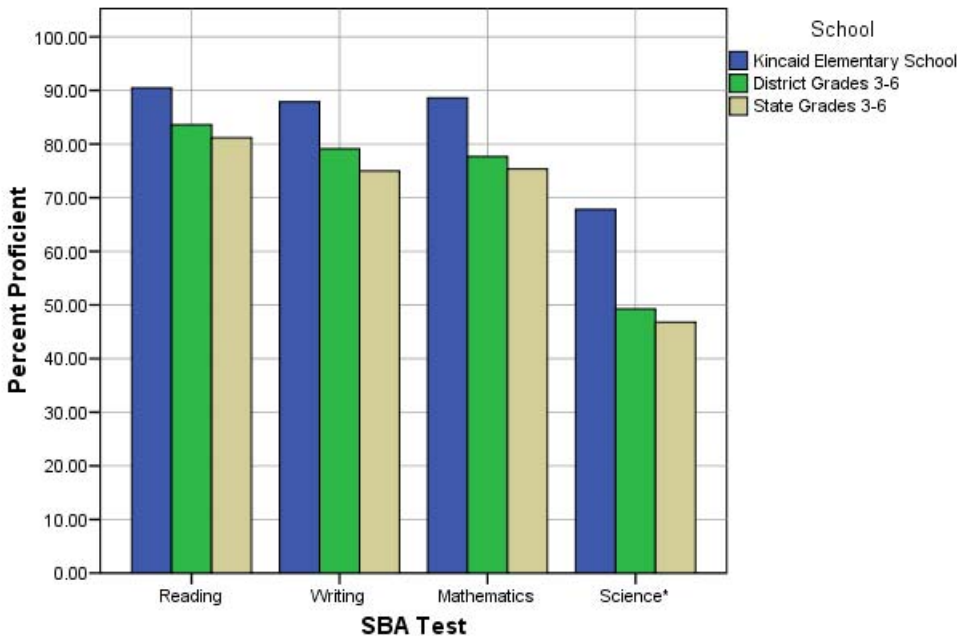
Mathematics: SBA Results Compared for Kincaid Elementary School, District and State Grades 3 Through 6															
	% Advanced Proficient			% Proficient			% Below Proficient			% Far Below Proficient			% Tested		
	School	District	State	School	District	State	School	District	State	School	District	State	School	District	State
All Students	55.88%	39.81%	36.08%	32.72%	37.84%	39.26%	5.15%	12.46%	13.78%	6.25%	9.88%	10.88%	94.77%	98.52%	98.12%
AF AM	*	19.48%	22.09%	*	40.14%	41.60%	*	20.19%	18.61%	*	20.19%	17.70%	71.43%	98.38%	97.78%
AKNA/AI	37.04%	23.20%	18.26%	55.56%	39.51%	39.14%	*	19.22%	21.79%	*	18.07%	20.81%	100.00%	96.96%	97.72%
Asian	38.46%	37.02%	34.29%	46.15%	41.20%	41.23%	*	13.76%	14.10%	*	8.03%	10.38%	92.86%	99.27%	98.99%
NH/OPI	50.00%	18.52%	N/A	*	38.07%	N/A	*	20.16%	N/A	*	23.25%	N/A	100.00%	99.39%	N/A
White	62.64%	51.12%	45.75%	30.46%	35.15%	38.35%	4.02%	8.41%	9.81%	2.87%	5.32%	6.09%	95.60%	98.69%	98.17%
Hispanic	63.16%	31.85%	31.11%	15.79%	40.04%	42.19%	*	15.02%	15.10%	*	13.09%	11.60%	90.48%	98.66%	98.47%
ME	42.86%	33.75%	35.45%	35.71%	41.21%	40.61%	*	13.93%	13.30%	*	11.11%	10.64%	93.33%	98.26%	98.00%
EDS	29.27%	24.26%	23.31%	48.78%	41.50%	40.98%	*	17.54%	18.60%	*	16.70%	17.11%	95.35%	98.14%	96.77%
Not EDS	60.61%	50.70%	45.67%	29.87%	35.28%	37.96%	5.19%	8.91%	10.16%	4.33%	5.12%	6.21%	94.67%	98.79%	99.16%
SWD	13.79%	12.52%	12.06%	31.03%	31.53%	32.14%	10.34%	23.68%	23.60%	44.83%	32.27%	32.20%	69.05%	94.19%	93.99%
Non-SWD	60.91%	44.69%	40.12%	32.92%	38.97%	40.45%	4.53%	10.46%	12.13%	1.65%	5.88%	7.30%	99.18%	99.34%	98.85%
LEP	*	8.22%	6.05%	*	36.74%	34.10%	*	24.50%	27.43%	*	30.54%	32.42%	75.00%	97.95%	97.56%
Not LEP	56.77%	42.73%	40.09%	32.71%	37.94%	39.95%	4.51%	11.35%	11.96%	6.02%	7.98%	8.01%	95.34%	98.57%	98.19%
Migrant	33.33%	30.94%	22.37%	44.44%	43.65%	40.27%	*	14.21%	20.36%	*	11.20%	17.00%	100.00%	98.68%	98.54%
Not Migrant	56.65%	40.21%	37.05%	32.32%	37.58%	39.19%	5.32%	12.38%	13.31%	5.70%	9.83%	10.45%	94.60%	98.51%	98.09%
Female	56.59%	41.01%	36.83%	33.33%	38.32%	39.88%	3.10%	11.59%	13.34%	6.98%	9.09%	9.96%	96.99%	98.71%	98.31%
Male	55.24%	38.66%	35.38%	32.17%	37.38%	38.67%	6.99%	13.30%	14.20%	5.59%	10.66%	11.75%	92.86%	98.34%	97.94%

* Results cannot be published without releasing personally identifiable information based upon the EED reporting protocol

Science: SBA Results Compared for Kincaid Elementary School, District and State Grade 4															
	% Advanced Proficient			% Proficient			% Below Proficient			% Far Below Proficient			% Tested		
	School	District	State	School	District	State	School	District	State	School	District	State	School	District	State
All Students	44.07%	23.68%	22.1%	23.73%	25.57%	24.7%	18.64%	31.70%	31.3%	13.56%	19.06%	21.9%	93.65%	97.81%	95.35%
AF AM	*	9.18%	8.9%	*	18.84%	23.3%	*	39.13%	38.0%	*	32.85%	29.8%	100.00%	98.57%	94.49%
AKNA/AI	*	6.54%	6.8%	*	21.50%	14.2%	*	42.99%	35.2%	*	28.97%	43.8%	100.00%	96.40%	94.98%
Asian	*	10.18%	13.4%	*	21.40%	19.4%	*	39.30%	37.5%	*	29.12%	29.7%	100.00%	98.28%	97.39%
NH/OPI	*	6.57%	N/A	*	8.03%	N/A	*	34.31%	N/A	*	51.09%	N/A	N/A	98.56%	N/A
White	58.33%	36.40%	32.3%	25.00%	29.08%	29.9%	*	25.33%	27.3%	*	9.19%	10.5%	94.74%	97.87%	94.97%
Hispanic	42.86%	16.17%	18.2%	*	26.15%	26.0%	*	32.08%	33.9%	*	25.61%	21.9%	100.00%	97.12%	96.39%
ME	*	16.06%	18.5%	42.86%	26.12%	26.8%	*	37.47%	35.9%	*	20.34%	18.7%	77.78%	98.32%	96.90%
EDS	*	8.34%	11.0%	27.27%	22.44%	20.1%	36.36%	38.10%	34.7%	*	31.12%	34.2%	100.00%	97.73%	94.99%
Not EDS	50.00%	35.00%	31.2%	22.92%	27.88%	28.5%	14.58%	26.97%	28.5%	12.50%	10.15%	11.9%	92.31%	97.87%	95.64%
SWD	*	8.38%	7.7%	*	16.38%	15.2%	50.00%	36.57%	36.6%	37.50%	38.67%	40.5%	66.67%	93.25%	91.70%
Non-SWD	49.02%	26.43%	24.7%	27.45%	27.22%	26.4%	13.73%	30.82%	30.4%	9.80%	15.53%	18.5%	100.00%	98.68%	96.04%
LEP	*	2.00%	1.5%	*	5.14%	3.8%	*	34.00%	28.3%	*	58.86%	66.5%	0.00%	96.15%	95.67%
Not LEP	44.07%	26.13%	25.2%	23.73%	27.88%	27.9%	18.64%	31.44%	31.8%	13.56%	14.55%	15.1%	95.16%	98.00%	95.30%
Migrant	*	9.70%	9.0%	*	26.87%	15.3%	*	39.55%	34.3%	*	23.88%	41.4%	100.00%	97.10%	97.32%
Not Migrant	45.45%	24.24%	23.0%	25.45%	25.51%	25.3%	16.36%	31.38%	31.1%	12.73%	18.86%	20.5%	93.22%	97.84%	95.21%
Female	56.00%	22.73%	20.8%	16.00%	25.78%	25.2%	*	33.63%	32.6%	*	17.87%	21.4%	96.15%	98.05%	95.43%
Male	35.29%	24.61%	23.4%	29.41%	25.36%	24.2%	17.65%	29.80%	30.1%	17.65%	20.23%	22.3%	91.89%	97.58%	95.27%

* Results cannot be published without releasing personally identifiable information based upon the EED reporting protocol

2007-08 SBA Results Compared for Kincaid Elementary School, District and State

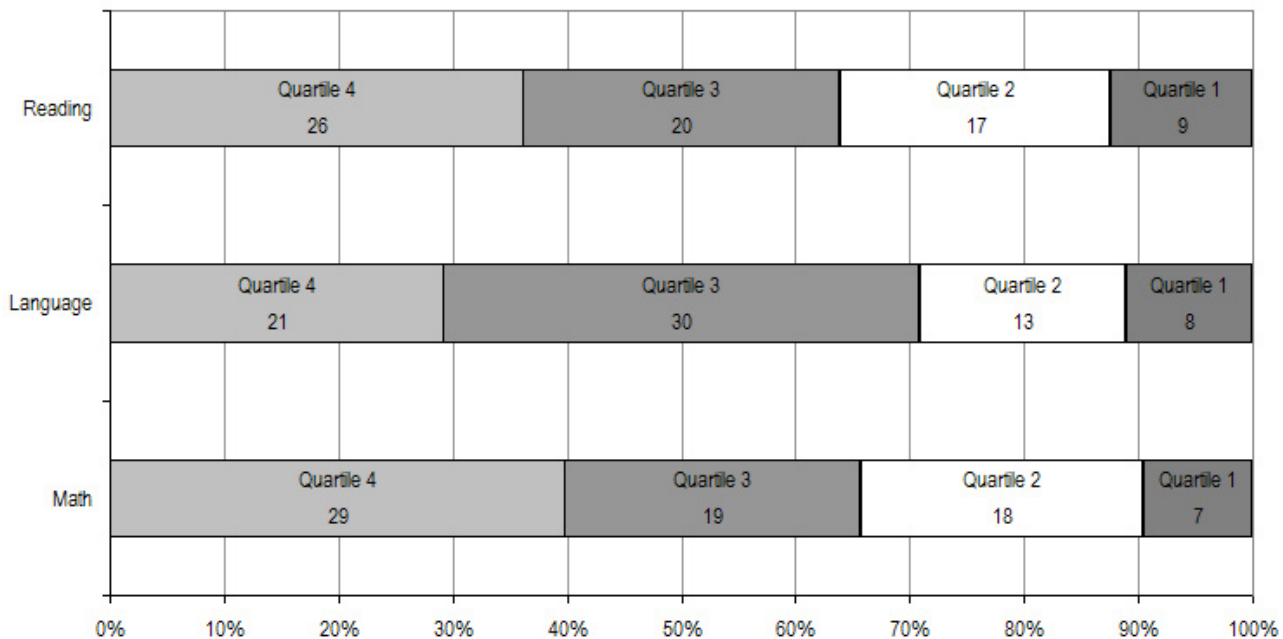


* 2007-08 was the first year Science was administered for grades 4, 8 and 10 on the SBA.

Kincaid Elementary School TerraNova Grade 5 Percent in Each Quartile								
Reading	Above Average		Average				Below Average	
	4th Quartile (76-99 percentile)		3rd Quartile (51-75 percentile)		2nd Quartile (26-50 percentile)		1st Quartile (1-25 percentile)	
	School	District	School	District	School	District	School	District
07-08	36.11%	25.65%	27.78%	24.08%	23.61%	23.73%	12.50%	26.55%
06-07	46.6%	33.1%	24.7%	26.1%	17.8%	23.6%	11.0%	17.2%
05-06	40.4%	30.4%	31.5%	26.8%	21.3%	24.5%	6.7%	18.3%
04-05	37.5%	29.2%	37.5%	27.6%	16.7%	24.5%	8.3%	18.7%
03-04	49.4%	30.6%	24.7%	26.9%	14.8%	24.2%	11.1%	18.3%
Language								
07-08	29.17%	26.79%	41.67%	27.20%	18.06%	24.12%	11.11%	21.89%
06-07	50.7%	34.7%	19.2%	26.9%	23.3%	21.4%	6.8%	17.0%
05-06	41.6%	34.0%	32.6%	26.5%	18.0%	22.0%	7.9%	17.5%
04-05	50.0%	32.1%	29.2%	28.3%	12.5%	21.2%	8.3%	18.4%
03-04	46.9%	34.1%	32.1%	26.5%	12.3%	21.7%	8.6%	17.7%
Mathematics								
07-08	39.73%	25.45%	26.03%	26.40%	24.66%	24.47%	9.59%	23.68%
06-07	43.1%	29.7%	36.1%	31.6%	11.1%	21.2%	9.7%	17.4%
05-06	46.7%	28.4%	37.8%	31.9%	13.3%	22.3%	2.2%	17.5%
04-05	45.8%	26.9%	30.6%	31.1%	19.4%	22.9%	4.2%	19.1%
03-04	43.2%	28.3%	35.8%	29.3%	14.8%	22.6%	6.2%	19.8%

The double bold line indicates a change from the TerraNova 2nd edition to the TerraNova 3rd edition.

2007-08 TerraNova 3rd Edition Grade 5 Percent and Count of Students in Each Quartile For Kincaid Elementary School



Climate Survey Results for Kincaid Elementary School

The Anchorage School District administered the School Climate and Connectedness Surveys in spring 2008 to students in grades 5-12, all school staff and parents/guardians of students in grades K-12. The surveys were done to provide schools with information about perceptions and experiences related to school climate for use in setting school goals and redirecting resources. In the spring of 2008 grades 3 and 4 students were involved in a pilot survey for measuring school climate and connectedness. The results are currently under review by the American Institutes for Research.

Respondents were asked to answer a series of questions that were related to a certain concept. For each item, there were five options from which to choose a response. The answer options ranged from strongly disagree (1) to strongly agree (5).

Student Survey Response Rate – Grades 5-12			
	Kincaid Elementary School	Overall Elementary Schools	District**
# Surveys Completed	128	5,579	21,629
# Reportable Surveys	115	4,969	18,654
# Students Enrolled*	152	6,331	28,945
Reportable Response Rate	75.66%	78.49%	64.45%

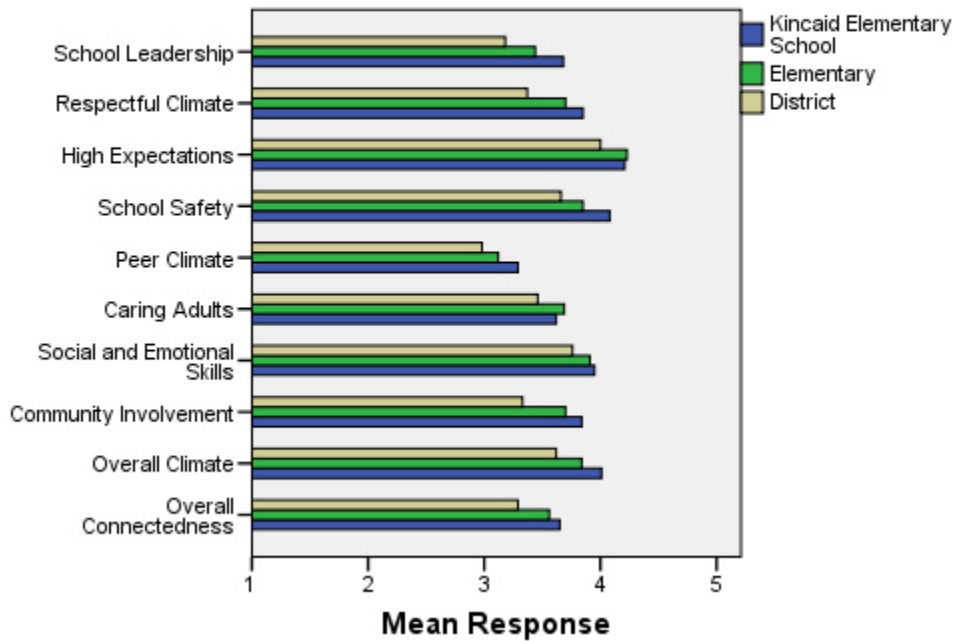
*Number enrolled as of April 1, 2008

**District data does not include KCC responses

Each question in the survey related to a factor or concept, and a score was calculated based on the mean response for the questions related to each factor. The factors measured in the survey were:

- **School Leadership and Student Involvement:** This factor reflects students’ feelings about the decision making of school leaders as well as student participation in the school governance. Students selected responses between 1 and 5 where 1 indicates a low level of school leadership and student involvement and 5 indicates a high level of school leadership and student involvement.
- **Respectful Climate:** This factor reflects students’ feelings about fairness of rules and respect for students’ contributions. Students selected responses between 1 and 5 where 1 indicates a lack of a respectful climate and 5 indicates a highly respectful climate for students.
- **High Expectations:** This factor reflects students’ feelings about their own expectations as well as those of adults in their school and community. Students selected responses between 1 and 5 where 1 indicates a lack of high expectations and 5 indicates a high level of high expectations.
- **School Safety:** This factor reflects students’ feelings about bullies and gangs at school as well as general crime and violence in the community. Students selected responses between 1 and 5 where 1 indicates a low level of school safety and 5 indicates a high level of school safety.
- **Peer Climate:** This factor reflects students’ feelings about how respectful students are to one another and how helpful students are to other students. Students selected responses between 1 and 5 where 1 indicates a more negative peer climate and 5 indicates a very positive peer climate at the school.
- **Caring Adults:** This factor reflects students’ feelings about how close they feel to adults in the school. Students selected responses between 1 and 5 where 1 indicates a lack of caring adult relationships and 5 indicates strong caring adult relationships at the school.
- **Social and Emotional Learning:** This factor reflects students’ ability to think about the consequences of their actions and to empathize with others. Students selected responses between 1 and 5 where 1 indicates that students at the school perceive themselves as having poorer social and emotional learning, and 5 indicates higher levels of social and emotional learning.
- **Community Involvement:** This factor reflects students’ feelings about how supportive and welcoming the school is with parents and the community. Students selected responses between 1 and 5 where 1 indicates a less supportive and welcoming environment and 5 indicates a more supportive and welcoming environment.
- **Overall Climate:** The overall climate score was computed as the mean of three scales: school leadership, high expectations and school safety.
- **Overall Connectedness:** Overall connectedness score was computed as a mean of four scales: respectful climate, peer climate, caring adults and community involvement.

Climate and Connectedness Student Survey - Kincaid



Student Survey Mean Response by Factors Related to School Climate - Overall District			
	Kincaid Elementary School	Overall Elementary Schools	District
School Leadership	3.68	3.44	3.18
Respectful Climate	3.85	3.70	3.37
High Expectations	4.21	4.23	4.00
School Safety	4.08	3.85	3.66
Peer Climate	3.29	3.12	2.98
Caring Adults	3.62	3.69	3.46
Social and Emotional Skills	3.95	3.91	3.76
Community Involvement	3.84	3.70	3.33
Overall Climate	4.01	3.84	3.62
Overall Connectedness	3.65	3.56	3.29

Range is from a low of 1 to a high of 5

Students were also asked to answer questions related to school danger. The following table provides the responses for those questions:

Student Survey Results of the School Danger Questions - Percent of Students Responding in Each Category					
	0 Times	1-2 Times	3-6 Times	7-12 Times	> 12 Times
Kincaid Elementary School					
Under the influence of drugs?	95.61%	2.63%	0.88%	0.00%	0.88%
Under the influence of alcohol?	92.11%	5.26%	0.88%	0.88%	0.88%
Destroy things (vandalism)?	59.13%	31.30%	6.96%	1.74%	0.87%
Get into fights?	34.82%	41.07%	8.93%	8.04%	7.14%
Steal things?	59.65%	31.58%	6.14%	0.00%	2.63%
Threaten or bully?	34.51%	39.82%	15.04%	4.42%	6.19%
Under the influence of inhalants?	72.32%	15.18%	4.46%	5.36%	2.68%
Carry weapons?	87.61%	10.62%	0.88%	0.00%	0.88%
Overall Elementary Schools					
Under the influence of drugs?	91.87%	5.65%	1.22%	0.31%	0.96%
Under the influence of alcohol?	91.42%	6.01%	1.16%	0.51%	0.90%
Destroy things (vandalism)?	46.82%	32.08%	12.45%	3.30%	5.36%
Get into fights?	22.32%	35.75%	22.56%	7.96%	11.41%
Steal things?	49.79%	27.92%	12.01%	4.33%	5.95%
Threaten or bully?	32.34%	28.83%	17.08%	7.78%	13.97%
Under the influence of inhalants?	71.03%	17.07%	6.14%	2.63%	3.12%
Carry weapons?	79.22%	15.35%	3.17%	0.59%	1.68%
District					
Under the influence of drugs?	60.45%	15.05%	9.54%	3.92%	11.04%
Under the influence of alcohol?	63.11%	16.37%	8.90%	4.43%	7.19%
Destroy things (vandalism)?	41.26%	29.47%	15.45%	5.88%	7.94%
Get into fights?	26.40%	35.20%	21.96%	7.11%	9.33%
Steal things?	44.80%	25.68%	13.81%	6.98%	8.74%
Threaten or bully?	32.21%	26.21%	16.68%	9.27%	15.63%
Under the influence of inhalants?	72.79%	14.21%	5.66%	2.48%	4.87%
Carry weapons?	69.45%	19.15%	5.34%	2.01%	4.06%

Student Survey Results of the Mean Factor Score by Ethnicity (Self-Reported)							
	AKNA/AI	AF AM	Hispanic	Asian/NH	White	Other	Multi-Ethnic
Kincaid Elementary School							
School Leadership	3.84	4.20	2.95	3.71	3.73	3.33	3.75
Respectful Climate	3.75	4.50	3.25	3.93	3.95	3.69	3.57
High Expectations	3.99	***	3.96	3.98	4.39	3.73	4.11
School Safety	3.50	3.80	4.40	3.26	4.30	3.65	4.10
Peer Climate	2.82	***	2.75	3.26	3.47	3.25	3.02
Caring Adults	3.04	3.20	3.35	3.14	3.81	3.46	3.69
Social and Emotional Skills	3.93	4.40	3.52	3.91	4.05	3.80	3.71
Community Involvement	3.90	***	3.24	4.02	3.89	3.61	3.75
Overall Climate	3.87	***	3.84	3.65	4.14	3.69	4.00
Overall Connectedness	3.50	***	2.84	3.54	3.76	3.57	3.51
Overall Elementary Schools							
School Leadership	3.56	3.50	3.52	3.55	3.37	3.44	3.42
Respectful Climate	3.75	3.60	3.66	3.72	3.71	3.69	3.63
High Expectations	4.12	4.23	4.23	4.22	4.26	4.19	4.25
School Safety	3.75	3.63	3.73	3.68	4.03	3.66	3.79
Peer Climate	3.12	2.94	3.12	3.18	3.16	3.05	3.05
Caring Adults	3.64	3.73	3.64	3.59	3.74	3.60	3.76
Social and Emotional Skills	3.86	3.84	3.91	3.95	3.93	3.90	3.89
Community Involvement	3.66	3.60	3.67	3.66	3.75	3.66	3.70
Overall Climate	3.81	3.79	3.84	3.81	3.89	3.76	3.82
Overall Connectedness	3.56	3.49	3.51	3.53	3.60	3.49	3.56
District							
School Leadership	3.33	3.14	3.19	3.28	3.14	3.17	3.15
Respectful Climate	3.48	3.18	3.32	3.39	3.39	3.37	3.33
High Expectations	3.98	3.94	3.96	4.02	4.02	4.00	4.01
School Safety	3.60	3.48	3.55	3.47	3.78	3.51	3.62
Peer Climate	3.01	2.85	2.94	3.05	3.00	2.92	2.93
Caring Adults	3.49	3.43	3.37	3.33	3.51	3.42	3.46
Social and Emotional Skills	3.73	3.66	3.73	3.81	3.78	3.75	3.74
Community Involvement	3.37	3.22	3.31	3.29	3.34	3.34	3.31
Overall Climate	3.64	3.52	3.57	3.59	3.65	3.56	3.60
Overall Connectedness	3.33	3.17	3.24	3.26	3.31	3.26	3.27

***Results can not be calculated because of missing responses

The response rate is not high enough to provide statistically reliable results for Kincaid Elementary School's Staff Survey Results.

Parent/Guardian Survey Response Rate			
	Kincaid Elementary School	Overall Elementary Schools	District**
# Surveys Completed	92	3,933	7,415
# Primary Guardians*	464	23,668	48,693
Response Rate	19.83%	16.62%	15.23%

*Number students enrolled as of April 1, 2008 without dual guardians included

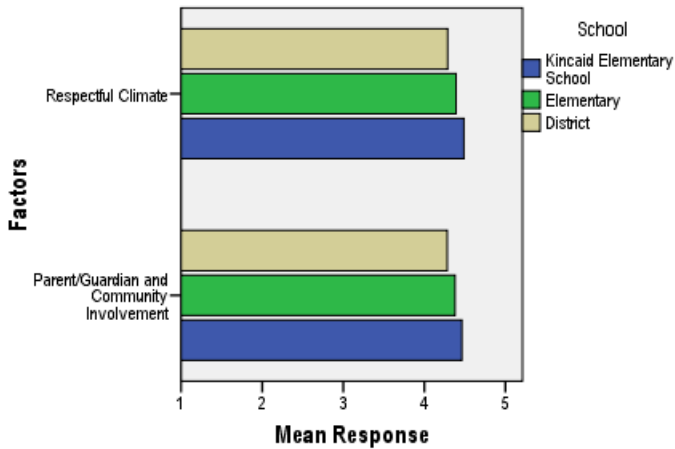
**District data

- 1) does not include KCC responses;
- 2) does include responses without a school designation

Two factors are calculated from the Parent/Guardian Survey. All results other than the factor scores below are reported by individual question: questions in the graphs are condensed phrases from the full question, while questions in the tables are the full question.

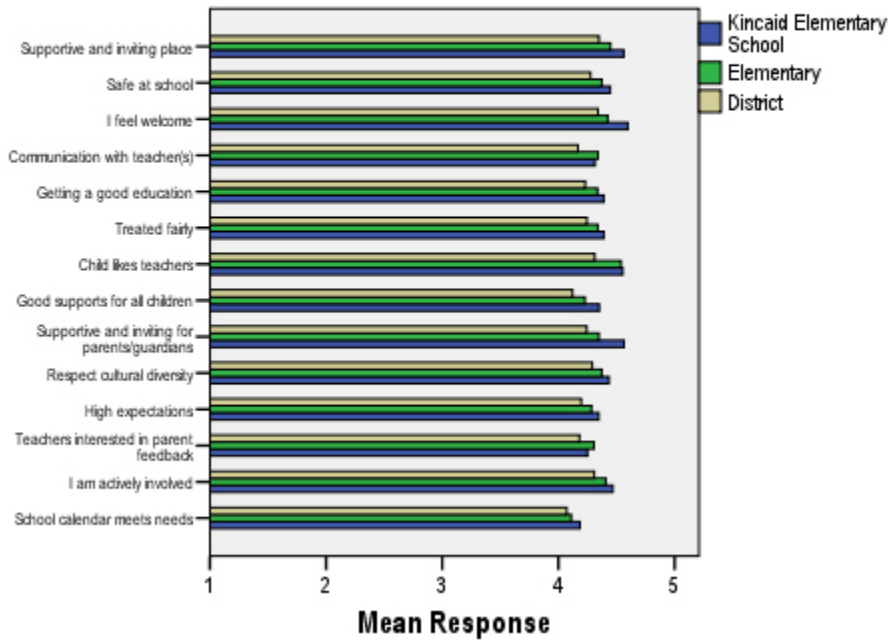
- **Respectful Climate:** This factor is calculated by determining the mean of five questions: 1) My child’s school is a supportive and inviting place, 2) I feel welcome at this school, 3) I am satisfied with communication with my child’s teacher(s), 4) This school is a supportive and inviting place for parents/guardians and 5) Adults at this school respect cultural diversity.
- **Parent/Guardian and Community Involvement:** This factor is calculated by determining the mean of five questions: 1) I feel welcome at this school, 2) This school is a supportive and inviting place for parents/guardians, 3) Adults at this school respect cultural diversity, 4) Teacher’s at my child’s school are interested in what I have to say and 5) I feel like I am actively involved in my child’s education.

Parent/Guardian Survey Mean Factor Scores (Range is from a low of 1 to a high of 5)



Parent/Guardian Factor Scores			
	Kincaid Elementary School	Overall Elementary Schools	District
Respectful Climate	4.49	4.39	4.29
Parent/Guardian and Community Involvement	4.46	4.38	4.28

Climate and Connectedness Parent/Guardian Survey - Kincaid



Parent/Guardian Mean Response by Questions Related to School Climate - Overall			
	Kincaid Elementary School	Overall Elementary Schools	District
My child's school is a supportive and inviting place	4.56	4.45	4.35
My child is safe at school	4.45	4.37	4.28
I feel welcome at this school	4.60	4.43	4.34
I am satisfied with communication with my child's teacher(s)	4.32	4.34	4.17
My child is getting a good education at this school	4.39	4.34	4.23
My child is treated fairly at school	4.39	4.34	4.25
My child likes his/her teachers	4.55	4.54	4.31
At this school, there are good supports for all children, including children with learning disabilities	4.35	4.23	4.12
This school is a supportive and inviting place for parents/guardians	4.57	4.35	4.24
Adults at this school respect cultural diversity	4.43	4.37	4.29
Adults at this school have high expectations of my child	4.35	4.29	4.20
Teachers at my child's school are interested in what I have to say	4.25	4.31	4.18
I feel like I am actively involved in my child's education	4.47	4.41	4.31
The district's school calendar meets the needs of my child and our family	4.19	4.11	4.07

Range is from a low of 1 to a high of 5

Parent/Guardian Mean Response by Questions Related to School Climate by Ethnicity (Self-Reported)							
Kincaid Elementary School	AKNA/AI	AF AM	Hispanic	Asian/NH	White	Other	ME
My child's school is a supportive and inviting place	4.33	1.00	5.00	4.50	4.63	5.00	4.33
My child is safe at school	4.22	1.00	5.00	5.00	4.47	5.00	4.67
I feel welcome at this school	4.44	1.00	5.00	4.50	4.65	5.00	4.67
I am satisfied with communication with my child's teacher(s)	4.33	1.00	5.00	4.50	4.32	5.00	4.33
My child is getting a good education at this school	4.44	1.00	4.50	5.00	4.41	5.00	4.33
My child is treated fairly at school	4.56	1.00	5.00	4.50	4.39	5.00	4.33
My child likes his/her teachers	4.78	1.00	5.00	5.00	4.58	5.00	3.67
At this school, there are good supports for all children, including children with learning disabilities	4.56	1.00	5.00	4.50	4.35	5.00	4.00
This school is a supportive and inviting place for parents/guardians	4.67	1.00	5.00	4.50	4.58	5.00	4.67
Adults at this school respect cultural diversity	4.22	1.00	5.00	4.50	4.49	5.00	4.33
Adults at this school have high expectations of my child	4.11	1.00	4.50	4.50	4.39	5.00	4.67
Teachers at my child's school are interested in what I have to say	4.44	1.00	5.00	4.00	4.26	5.00	4.00
I feel like I am actively involved in my child's education	4.44	1.00	5.00	4.00	4.50	5.00	4.67
The district's school calendar meets the needs of my child and our family	4.11	1.00	3.50	4.50	4.26	4.00	4.00
Overall Elementary Schools							
My child's school is a supportive and inviting place	4.47	4.36	4.51	4.44	4.47	4.26	4.46
My child is safe at school	4.42	4.40	4.42	4.36	4.38	4.23	4.35
I feel welcome at this school	4.37	4.38	4.47	4.48	4.44	4.27	4.49
I am satisfied with communication with my child's teacher(s)	4.40	4.30	4.45	4.36	4.35	4.19	4.35
My child is getting a good education at this school	4.40	4.28	4.44	4.40	4.33	4.04	4.38
My child is treated fairly at school	4.34	4.15	4.37	4.32	4.38	4.14	4.33
My child likes his/her teachers	4.52	4.41	4.47	4.53	4.57	4.49	4.55
At this school, there are good supports for all children, including children with learning disabilities	4.32	4.06	4.31	4.31	4.22	4.05	4.31
This school is a supportive and inviting place for parents/guardians	4.31	4.22	4.42	4.38	4.36	4.11	4.44
Adults at this school respect cultural diversity	4.28	4.25	4.38	4.27	4.43	4.19	4.39
Adults at this school have high expectations of my child	4.30	4.26	4.36	4.27	4.31	3.95	4.28
Teachers at my child's school are interested in what I have to say	4.35	4.25	4.39	4.24	4.33	4.16	4.31
I feel like I am actively involved in my child's education	4.38	4.48	4.40	4.31	4.45	4.20	4.40
The district's school calendar meets the needs of my child and our family	4.22	4.25	4.20	4.19	4.10	3.62	4.08
District							
My child's school is a supportive and inviting place	4.37	4.20	4.41	4.37	4.37	4.20	4.37
My child is safe at school	4.31	4.18	4.29	4.31	4.29	4.11	4.30
I feel welcome at this school	4.31	4.18	4.38	4.36	4.36	4.23	4.40
I am satisfied with communication with my child's teacher(s)	4.21	3.99	4.32	4.23	4.16	4.03	4.20
My child is getting a good education at this school	4.28	4.09	4.33	4.31	4.23	4.03	4.26
My child is treated fairly at school	4.21	3.94	4.30	4.24	4.29	4.08	4.24
My child likes his/her teachers	4.33	4.06	4.31	4.35	4.33	4.20	4.34
At this school, there are good supports for all children, including children with learning disabilities	4.19	3.90	4.24	4.23	4.11	3.97	4.18
This school is a supportive and inviting place for parents/guardians	4.21	4.05	4.31	4.29	4.26	4.05	4.31
Adults at this school respect cultural diversity	4.20	4.02	4.29	4.22	4.34	4.17	4.31
Adults at this school have high expectations of my child	4.24	4.05	4.26	4.21	4.21	3.94	4.20
Teachers at my child's school are interested in what I have to say	4.22	4.04	4.28	4.17	4.20	4.05	4.19
I feel like I am actively involved in my child's education	4.29	4.36	4.37	4.24	4.33	4.20	4.30
The district's school calendar meets the needs of my child and our family	4.19	4.18	4.21	4.16	4.06	3.66	4.02

Range is from a low of 1 to a high of 5

***Results can not be calculated because of missing responses