

Klatt Elementary School Overview

Statement of Program

Klatt Elementary School is dedicated to offering a well-rounded education to all students. Excellence is achieved through an ongoing emphasis on reading, writing and mathematics. Professionally sound and individually appropriate learning experiences are provided to meet each student's varying needs, abilities, interests and special talents.

Klatt provides a full-day kindergarten program. Other programs at Klatt include bilingual education and the IGNITE Program for the gifted.

From the School Report Card

School Goals

Goal	Level of Achievement
Increase student proficiency on the state writing assessment.	Attained
Increase student performance in reading at all levels as measured by district and state assessments.	Attained
Increase parent involvement with the BOOK-IT Program.	Partially Attained

From the School Report Card

Budget*

2006-07 Actual Expenditures	\$2,013,962
2007-08 Revised Budgeted Amount	\$2,375,127
2008-09 Proposed Budget	\$2,345,915

*Dollars budgeted or expended are general fund only
From IFAS

Klatt Elementary School Characteristics			
	School	District	Source of Information
Membership	341	48,858	Fall OASIS
Capacity	75.96%	N/A	2008-18 ASD Capital Improvement Plan
Attendance Rate	93.86%	92.83%	NCLB Summer Data Collection
Retention Rate K-8	1.46%	0.60%	SMS and NCLB Summer Data Collection
Transiency Rate	19.05%	26.07%	NCLB Summer Data Collection
Economically Disadvantaged	167	17,717	Fall OASIS
Average Weekly Volunteer Hours	15	4,660	Department of Education Report Card Report
Students Taking the Alternate Assessment	0	228	SMS
Change in Enrollment	-7.84%	-0.76%	Fall Oasis

Teacher Qualification				
Number of Teachers	Percent Fully Licensed	Percent With Advanced Degrees	Number Nationally Board Certified	Percent of Classes Taught by "Highly Qualified Teachers"
30	100.00%	43.33%	0	100.00%

Klatt Elementary School Business Partnerships
Anchorage Sand & Gravel; Borders Books and Music; Crosspoint Church; FedEx-Kinko's; Steamers Espresso; Hillside Rotary Club; Wells Fargo Bank, Huffman branch

From the School Report Card

Ethnicity Report							
African-American/ Black	Alaska Native/ American Indian	Asian	Native Hawaiian/Other Pacific Islander	White	Hispanic	Multi-Ethnic	Total
2	37	57	1	126	71	47	341

From Fall Oasis

Full Academic Year		
Students Enrolled	Students Enrolled for FAY	Percent FAY
340	316	92.94%

From participation file (Grades 3-10)

**Klatt Elementary School
2007-08 Adequate Yearly Progress
Status Report**

Meets AYP under Safe Harbor

AMO For Language Arts: 77.18%
AMO For Mathematics: 66.09%

Group	Participation Rate				"FAY" (D) Tested & Enrolled "FAY"	Language Arts Performance				Mathematics Performance			
	(A) Number Enrolled	(B) Number Tested	Participation Rate (%)	(C) Participation Rate Met		(E) Proficient on LA	(F) Percent Proficient on LA	(G) LA Target	(H) Met AMO for LA	(I) Proficient on Mathematics	(J) Percent Proficient in Mathematics	(K) Mathematics Target	(L) Met AMO for Mathematics
All Students	192	192	100%	Yes	175	133	76%	69.8%	Yes	143	81.7%	57.8%	Yes
AF AM	<5	<5	N/A	N/A	N/A	N/A	N/A	N/A	N/A	N/A	N/A	N/A	N/A
AKNA/AI	20	20	N/A	N/A	N/A	N/A	N/A	N/A	N/A	N/A	N/A	N/A	N/A
Asian/NH/OPI	39	39	100%	Yes	38	29	76.3%	61.3%	Yes	35	92.1%	48.2%	Yes
White	64	64	100%	Yes	59	47	79.7%	64.4%	Yes	49	83.1%	51.7%	Yes
Hispanic	46	46	100%	Yes	38	27	71.1%	61.3%	Yes	28	73.7%	48.2%	Yes
ME	21	21	100%	Yes	N/A	N/A	N/A	N/A	N/A	N/A	N/A	N/A	N/A
EDS	106	106	100%	Yes	94	63	67%	67.1%	Yes-SH	71	75.5%	54.7%	Yes
SWD	39	39	100%	Yes	36	16	44.4%	60.9%	Yes-SH	21	58.3%	47.7%	Yes
LEP	76	76	100%	Yes	69	49	71%	65.4%	Yes	55	79.7%	52.8%	Yes

Attendance Rate: Met

93.9% (Threshold is 85%)

N/A is used to indicate:

(1) Subgroups with 20 or fewer students enrolled on the first day of testing shall not be included in participation rate calculation.

(2) Subgroups with 25 or fewer students enrolled for the "full academic year" shall not have the performance score computed.

* For the groups where the number enrolled is less than or equal to 40, participation is met when no more than two miss the test. Groups can also meet this target using the average of the past two or three years.

** When a group achieves a "Yes" without meeting the listed target, it has done so using either the 99% confidence interval or Safe Harbor.

*** The results cannot be published without releasing personally identifiable information based upon the EED reporting protocol.

This document was prepared by the ASD Assessment and Evaluation Department.

7/10/2008

Klatt Elementary School
2007-08 Adequate Yearly Progress
Growth Report

The AYP growth reports are generated by the Alaska State Department of Education and Early Development. The reports can be found online at: http://www.asdk12.org/depts/assess_eval/AYP/State_AS_D_AYG_0708.pdf

SBA Proficiency Comparison by Grade for Klatt Elementary School																
	Reading Percent Proficient				Writing Percent Proficient				Mathematics Percent Proficient				Science* Percent Proficient			
	04-05	05-06	06-07	07-08	04-05	05-06	06-07	07-08	04-05	05-06	06-07	07-08	04-05	05-06	06-07	07-08
All Students	71.81%	75.70%	73.91%	80.00%	69.60%	76.17%	68.60%	73.68%	69.30%	74.54%	74.40%	79.27%	N/A	N/A	N/A	40.38%
Grade 3	59.26%	74.36%	62.75%	76.00%	57.41%	56.41%	58.82%	76.00%	69.09%	62.50%	60.78%	78.00%	N/A	N/A	N/A	N/A
Grade 4	80.70%	79.63%	71.43%	76.92%	71.93%	70.37%	66.67%	69.23%	75.44%	80.00%	69.05%	68.52%	N/A	N/A	N/A	40.38%
Grade 5	77.36%	76.56%	82.35%	90.00%	73.58%	89.06%	78.43%	80.00%	66.04%	82.81%	82.35%	92.50%	N/A	N/A	N/A	N/A
Grade 6	69.84%	71.93%	77.78%	79.17%	74.60%	80.70%	69.84%	70.83%	66.67%	68.42%	82.54%	81.63%	N/A	N/A	N/A	N/A

* 2007-08 was the first year Science was administered for grades 4, 8 and 10 on the SBA.

SBA Proficient & Not Proficient by NCLB Groups for Klatt Elementary School								
	Reading		Writing		Mathematics		Science**	
	Percent Proficient	Percent Not Proficient	Percent Proficient	Percent Not Proficient	Percent Proficient	Percent Not Proficient	Percent Proficient	Percent Not Proficient
All Students	80.00%	20.00%	73.68%	26.32%	79.27%	20.73%	40.38%	59.62%
AF AM	*	*	*	*	*	*	*	*
AKNA/AI	65.00%	35.00%	65.00%	35.00%	70.00%	30.00%	60% or fewer	40% or more
Asian	74.36%	25.64%	71.79%	28.21%	89.74%	10.26%	30.77%	69.23%
NH/OPI	*	*	*	*	*	*	*	*
White	87.50%	12.50%	81.25%	18.75%	82.81%	17.19%	53.33%	46.67%
Hispanic	75.00%	25.00%	63.64%	36.36%	70.21%	29.79%	35.71%	64.29%
ME	90% or more	10% or fewer	80.95%	19.05%	85.71%	14.29%	*	*
EDS	70.87%	29.13%	64.08%	35.92%	71.70%	28.30%	26.67%	73.33%
Non-EDS	90.80%	9.20%	85.06%	14.94%	88.51%	11.49%	59.09%	40.91%
SWD	62.07%	37.93%	48.28%	51.72%	55.17%	44.83%	60% or fewer	40% or more
Non-SWD	83.23%	16.77%	78.26%	21.74%	83.54%	16.46%	40.43%	59.57%
LEP	44.00%	56.00%	40.00%	60.00%	50.00%	50.00%	80% or fewer	20% or more
Not LEP	85.45%	14.55%	78.79%	21.21%	84.24%	15.76%	46.34%	53.66%
Migrant	80% or more	20% or fewer	80% or more	20% or fewer	78.57%	21.43%	*	*
Not Migrant	79.55%	20.45%	72.73%	27.27%	79.33%	20.67%	41.67%	58.33%
Female	85.86%	14.14%	80.81%	19.19%	83.17%	16.83%	45.16%	54.84%
Male	73.63%	26.37%	65.93%	34.07%	75.00%	25.00%	33.33%	66.67%

* Results cannot be published without releasing personally identifiable information based upon the EED reporting protocol

** 2007-08 was the first year Science was administered for grades 4, 8 and 10 on the SBA.

SBA Mean Scale Score Comparison by NCLB Groups for Klatt Elementary School								
	Reading		Writing		Mathematics		Science***	
	06-07	07-08	06-07	07-08	06-07	07-08	06-07	07-08
All Students	361.06	370.12	349.59	362.04	362.52	367.06	N/A	290.13
AF AM	385.00	*	*	*	*	*	N/A	*
AKNA/AI	362.60	348.20	342.51	345.55	361.88	351.30	N/A	267.00
Asian**	338.96	349.49	343.51	357.49	363.64	373.00	N/A	281.69
NH/OPI**	N/A	*	N/A	*	N/A	*	N/A	*
White	376.52	391.91	358.42	378.44	376.52	383.64	N/A	319.07
Hispanic	343.40	354.75	332.00	342.32	326.88	343.87	N/A	277.36
ME	373.10	394.52	381.60	379.57	343.90	382.19	N/A	*
EDS	343.95	347.90	329.75	336.84	339.07	346.37	N/A	270.17
Non-EDS	379.01	396.43	370.41	391.86	387.14	392.28	N/A	317.36
SWD	311.43	331.41	290.25	316.59	318.63	325.79	N/A	275.40
Non-SWD	372.95	377.09	363.80	370.22	373.04	374.36	N/A	291.70
LEP	334.23	313.16	329.47	306.84	339.11	307.39	N/A	250.45
Not LEP	378.30	378.75	362.52	370.40	377.57	377.19	N/A	300.78
Migrant	359.47	387.21	351.82	366.43	363.71	367.71	N/A	*
Not Migrant	361.20	368.76	349.39	361.69	362.42	367.01	N/A	290.67
Female	364.93	383.94	366.05	385.20	362.07	374.05	N/A	299.71
Male	356.91	355.09	331.98	336.84	363.00	359.39	N/A	276.00

* Results cannot be published without releasing personally identifiable information based upon the EED reporting protocol

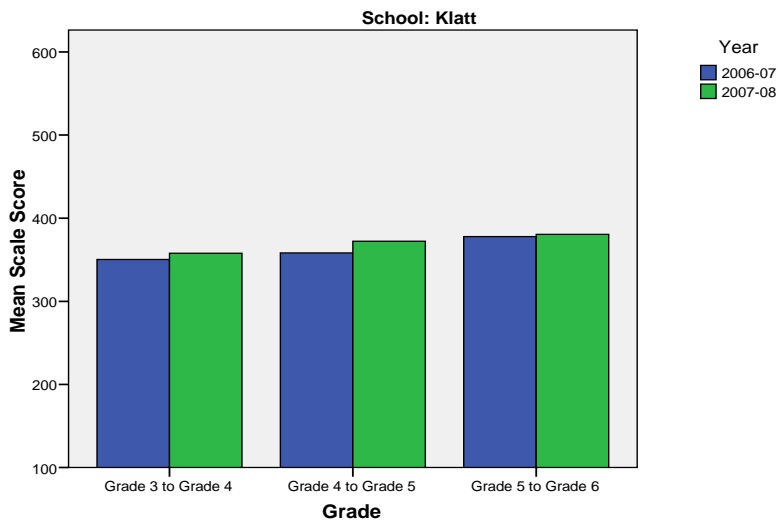
** Prior to 2007-08 the Asian category includes Native Hawaiian/Other Pacific Islander. In 2007-08 Native Hawaiian/Other Pacific Islander is a separate ethnic category.

*** 2007-08 was the first year Science was administered for grades 4, 8 and 10 on the SBA.

Klatt Elementary School SBA Change Average Scale Score by NCLB Groups: Reading									
	Average Scale Score of Students Tested in District Both Years			Average Scale Score of Students Tested in District Both Years			Average Scale Score of Students Tested in District Both Years		
	Grade 3 in 06-07	Grade 4 in 07-08	Difference	Grade 4-in 06-07	Grade 5 in 07-08	Difference	Grade 5-in 06-07	Grade 6 in 07-08	Difference
All Students	350.31	357.83	7.52	358.26	372.16	13.89	377.77	380.53	2.77
AF AM	*	*	*	*	*	*	*	*	*
AKNA/AI	361.00	347.20	-13.80	*	*	*	*	*	*
Asian	327.58	337.75	10.17	368.33	346.67	-21.67	338.45	349.18	10.73
NH/OPI	*	*	*	*	*	*	*	*	*
White	373.08	372.69	-0.38	385.08	389.25	4.17	394.35	391.15	-3.20
Hispanic	332.38	343.62	11.23	322.36	367.09	44.73	377.71	369.00	-8.71
ME	*	*	*	369.20	380.60	11.40	398.60	426.40	27.80
EDS	322.11	329.68	7.57	340.35	358.95	18.60	367.13	367.96	0.83
Non-EDS	389.80	397.25	7.45	378.17	386.83	8.67	387.96	392.58	4.62
SWD	302.00	321.00	19.00	338.50	372.83	34.33	303.82	311.82	8.00
Non-SWD	355.93	362.12	6.19	361.97	372.03	10.06	400.36	401.53	1.17
LEP	279.11	296.00	16.89	*	*	*	*	*	*
Not LEP	366.74	372.10	5.36	369.18	381.12	11.94	379.91	380.09	0.18
Migrant	*	*	*	*	*	*	*	*	*
Not Migrant	348.27	355.73	7.45	355.31	370.97	15.66	375.39	375.84	0.45
Female	369.76	378.93	9.17	359.95	381.68	21.74	405.33	401.29	-4.05
Male	320.63	325.63	5.00	356.58	362.63	6.05	355.50	363.77	8.27

* Results cannot be published without releasing personally identifiable information based upon the EED reporting protocol

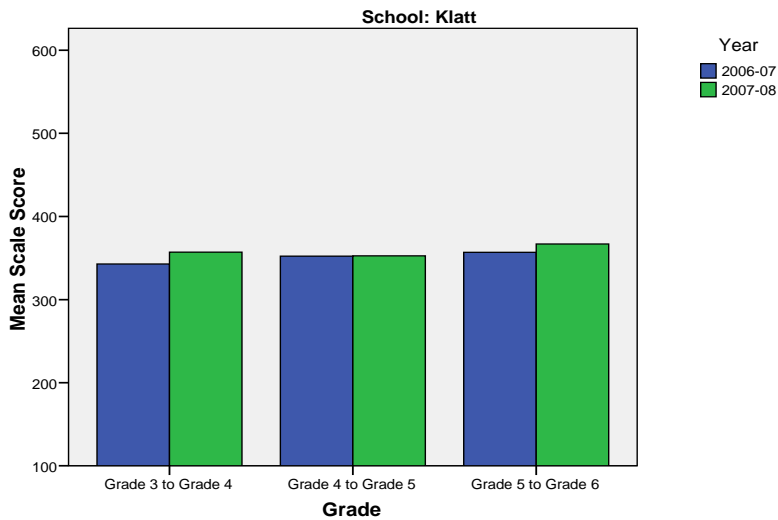
Change in Mean Scale Score in SBA Reading by Grade Between 2006-07 and 2007-08



Klatt Elementary School SBA Change Average Scale Score by NCLB Groups: Writing									
	Average Scale Score of Students Tested in District Both Years			Average Scale Score of Students Tested in District Both Years			Average Scale Score of Students Tested in District Both Years		
	Grade 3 in 06-07	Grade 4 in 07-08	Difference	Grade 4- in 06-07	Grade 5 in 07-08	Difference	Grade 5- in 06-07	Grade 6 in 07-08	Difference
All Students	342.73	357.04	14.31	352.11	352.68	0.58	356.81	366.83	10.02
AF AM	*	*	*	*	*	*	*	*	*
AKNA/AI	332.00	354.20	22.20	*	*	*	*	*	*
Asian	348.92	352.08	3.17	369.50	368.83	-0.67	336.18	342.64	6.45
NH/OPI	*	*	*	*	*	*	*	*	*
White	353.92	383.46	29.54	378.25	365.58	-12.67	360.15	368.90	8.75
Hispanic	325.38	335.31	9.92	327.09	339.64	12.55	368.00	355.57	-12.43
ME	*	*	*	348.80	354.00	5.20	371.20	410.40	39.20
EDS	306.86	323.46	16.61	335.85	332.85	-3.00	343.43	348.00	4.57
Non-EDS	392.95	404.05	11.10	370.17	374.72	4.56	369.63	384.88	15.25
SWD	274.00	299.20	25.20	307.83	347.33	39.50	265.27	305.18	39.91
Non-SWD	350.72	363.77	13.05	360.41	353.69	-6.72	384.78	385.67	0.89
LEP	279.78	300.22	20.44	*	*	*	*	*	*
Not LEP	357.26	370.15	12.90	361.79	358.79	-3.00	356.80	368.80	12.00
Migrant	*	*	*	*	*	*	*	*	*
Not Migrant	339.30	357.68	18.39	353.43	353.94	0.51	353.75	365.61	11.86
Female	366.07	386.38	20.31	369.89	365.26	-4.63	395.90	400.10	4.19
Male	307.11	312.26	5.16	334.32	340.11	5.79	325.23	339.96	14.73

* Results cannot be published without releasing personally identifiable information based upon the EED reporting protocol

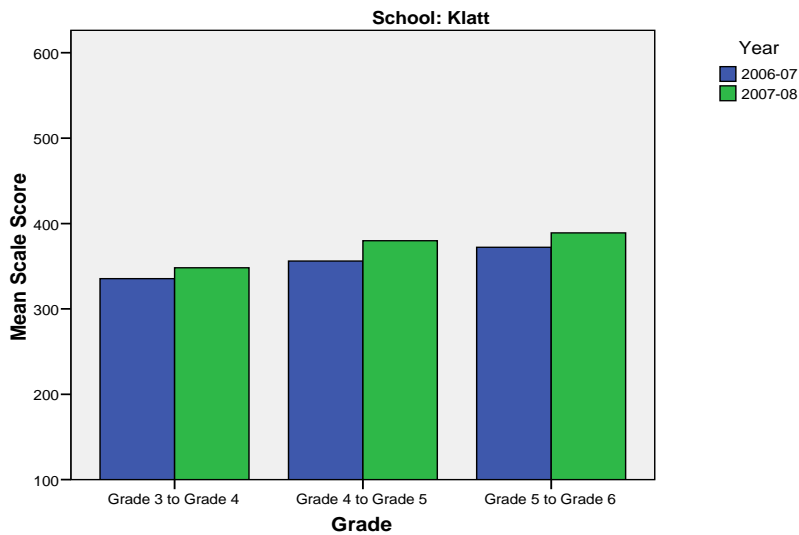
Change in Mean Scale Score in SBA Writing by Grade between 2006-07 and 2007-08



Klatt Elementary School SBA Change Average Scale Score by NCLB Groups: Mathematics									
	Average Scale Score of Students Tested in District Both Years			Average Scale Score of Students Tested in District Both Years			Average Scale Score of Students Tested in District Both Years		
	Grade 3 in 06-07	Grade 4 in 07-08	Difference	Grade 4- in 06-07	Grade 5 in 07-08	Difference	Grade 5- in 06-07	Grade 6 in 07-08	Difference
All Students	335.50	348.08	12.58	355.97	379.76	23.79	372.17	389.00	16.83
AF AM	*	*	*	*	*	*	*	*	*
AKNA/AI	319.60	325.20	5.60	*	*	*	*	*	*
Asian	330.33	347.42	17.08	395.50	400.00	4.50	362.18	405.09	42.91
NH/OPI	*	*	*	*	*	*	*	*	*
White	363.92	379.31	15.38	371.08	368.67	-2.42	385.10	385.05	-0.05
Hispanic	308.15	323.77	15.62	328.27	381.82	53.55	356.86	367.14	10.29
ME	*	*	*	334.20	393.00	58.80	369.20	400.00	30.80
EDS	301.54	319.93	18.39	351.00	375.80	24.80	353.30	369.30	16.00
Non-EDS	383.05	387.50	4.45	361.50	384.17	22.67	390.25	407.88	17.63
SWD	254.60	286.00	31.40	291.33	358.67	67.33	308.91	324.91	16.00
Non-SWD	344.91	355.30	10.40	368.09	383.72	15.63	391.50	408.58	17.08
LEP	274.78	308.11	33.33	*	*	*	*	*	*
Not LEP	349.51	357.31	7.79	361.94	383.00	21.06	373.07	393.11	20.05
Migrant	*	*	*	*	*	*	*	*	*
Not Migrant	333.43	349.25	15.82	357.40	381.60	24.20	368.77	386.93	18.16
Female	349.93	361.48	11.55	365.05	385.16	20.11	392.76	409.48	16.71
Male	313.47	327.63	14.16	346.89	374.37	27.47	355.54	372.46	16.92

* Results cannot be published without releasing personally identifiable information based upon the EED reporting protocol

Change in Mean Scale Score in SBA Mathematics by Grade between 2006-07 and 2007-08



Reading: SBA Results Compared for Klatt Elementary School, District and State Grades 3 Through 6															
	% Advanced Proficient			% Proficient			% Below Proficient			% Far Below Proficient			% Tested		
	School	District	State	School	District	State	School	District	State	School	District	State	School	District	State
All Students	34.74%	39.70%	35.67%	45.26%	43.89%	45.50%	15.79%	11.60%	13.02%	4.21%	4.80%	5.80%	98.96%	98.15%	97.98%
AF AM	*	20.73%	22.99%	*	54.18%	53.49%	*	17.79%	16.46%	*	7.30%	7.06%	100.00%	98.04%	97.49%
AKNA/AI	30.00%	20.23%	14.62%	35.00%	51.11%	48.17%	20.00%	18.54%	24.83%	15.00%	10.11%	12.37%	100.00%	96.88%	97.59%
Asian	23.08%	30.22%	28.26%	51.28%	48.71%	51.04%	*	15.32%	15.32%	*	5.75%	5.38%	100.00%	97.64%	97.67%
NH/OPI	*	14.67%	N/A	*	51.03%	N/A	*	24.59%	N/A	*	9.71%	N/A	N/A	98.98%	N/A
White	43.75%	52.75%	47.28%	43.75%	38.06%	42.41%	*	6.69%	7.27%	*	2.50%	3.03%	100.00%	98.68%	98.28%
Hispanic	29.55%	32.35%	31.74%	45.45%	46.43%	48.60%	15.91%	14.67%	13.66%	9.09%	6.55%	6.00%	95.65%	97.14%	97.32%
ME	47.62%	33.26%	34.76%	42.86%	48.25%	47.75%	*	13.47%	12.80%	*	5.01%	4.70%	100.00%	98.15%	98.03%
EDS	24.27%	22.85%	21.47%	46.60%	49.71%	48.65%	21.36%	19.04%	20.31%	7.77%	8.40%	9.57%	97.17%	97.50%	96.44%
Not EDS	47.13%	51.44%	46.31%	43.68%	39.84%	43.15%	*	6.42%	7.56%	*	2.30%	2.98%	100.00%	98.61%	99.16%
SWD	17.24%	10.08%	9.29%	44.83%	37.10%	37.96%	24.14%	32.15%	31.20%	13.79%	20.67%	21.55%	100.00%	94.28%	93.60%
Non-SWD	37.89%	45.02%	40.09%	45.34%	45.12%	46.77%	14.29%	7.91%	9.98%	2.48%	1.95%	3.17%	98.77%	98.88%	98.75%
LEP	*	4.97%	3.12%	36.00%	39.93%	38.06%	48.00%	37.14%	38.40%	*	17.96%	20.42%	89.29%	94.25%	96.11%
Not LEP	38.79%	42.78%	39.95%	46.67%	44.25%	46.48%	10.91%	9.33%	9.68%	3.64%	3.64%	3.88%	100.00%	98.51%	98.23%
Migrant	42.86%	27.01%	17.29%	42.86%	50.34%	48.58%	*	16.44%	23.78%	*	6.21%	10.35%	100.00%	98.35%	98.50%
Not Migrant	34.09%	40.26%	36.97%	45.45%	43.61%	45.29%	16.48%	11.38%	12.26%	3.98%	4.74%	5.48%	98.88%	98.14%	97.94%
Female	41.41%	44.40%	39.45%	44.44%	43.41%	45.33%	*	8.75%	10.85%	*	3.44%	4.37%	98.02%	98.39%	98.31%
Male	27.47%	35.15%	32.09%	46.15%	44.37%	45.67%	19.78%	14.36%	15.08%	6.59%	6.13%	7.16%	100.00%	97.92%	97.66%

* Results cannot be published without releasing personally identifiable information based upon the EED reporting protocol

Writing: SBA Results Compared for Klatt Elementary School, District and State Grades 3 Through 6															
	% Advanced Proficient			% Proficient			% Below Proficient			% Far Below Proficient			% Tested		
	School	District	State	School	District	State	School	District	State	School	District	State	School	District	State
All Students	28.95%	34.87%	30.49%	44.74%	44.25%	44.50%	*	18.78%	22.32%	*	2.10%	2.69%	98.96%	98.11%	97.96%
AF AM	*	20.71%	20.51%	*	46.71%	48.68%	*	28.71%	27.18%	*	3.88%	3.63%	100.00%	98.15%	97.71%
AKNA/AI	25.00%	17.15%	12.11%	40.00%	45.31%	41.05%	*	33.38%	40.69%	*	4.15%	6.15%	100.00%	96.51%	97.64%
Asian	28.21%	30.17%	28.49%	43.59%	45.92%	45.93%	*	21.33%	23.31%	*	2.58%	2.27%	100.00%	97.56%	97.67%
NH/OPI	*	14.02%	N/A	*	42.89%	N/A	*	39.38%	N/A	*	3.71%	N/A	N/A	99.18%	N/A
White	37.50%	45.85%	40.04%	43.75%	41.91%	44.71%	*	11.26%	13.97%	*	0.99%	1.28%	100.00%	98.66%	98.22%
Hispanic	15.91%	27.33%	27.00%	47.73%	47.25%	48.36%	*	22.54%	22.23%	*	2.88%	2.41%	95.65%	97.07%	97.36%
ME	38.10%	28.51%	29.14%	42.86%	47.68%	47.29%	*	21.31%	21.37%	*	2.51%	2.20%	100.00%	98.15%	97.96%
EDS	18.45%	18.92%	17.53%	45.63%	47.34%	45.15%	*	29.95%	32.95%	*	3.79%	4.37%	97.17%	97.50%	96.53%
Not EDS	41.38%	45.99%	40.21%	43.68%	42.10%	44.01%	*	10.99%	14.35%	*	0.92%	1.44%	100.00%	98.54%	99.06%
SWD	10.34%	7.09%	6.94%	37.93%	38.82%	37.02%	*	45.96%	47.34%	*	8.12%	8.69%	100.00%	94.28%	93.97%
Non-SWD	32.30%	39.86%	34.45%	45.96%	45.23%	45.76%	*	13.89%	18.11%	*	1.02%	1.69%	98.77%	98.83%	98.66%
LEP	*	4.71%	3.14%	36.00%	37.05%	30.66%	56.00%	50.57%	56.76%	*	7.67%	9.44%	89.29%	94.25%	96.18%
Not LEP	32.73%	37.55%	34.08%	46.06%	44.89%	46.32%	*	15.96%	17.79%	*	1.60%	1.81%	100.00%	98.47%	98.20%
Migrant	28.57%	21.44%	14.20%	57.14%	48.58%	42.55%	*	26.63%	38.57%	*	3.35%	4.68%	100.00%	98.51%	98.58%
Not Migrant	28.98%	35.46%	31.63%	43.75%	44.06%	44.64%	*	18.43%	21.18%	*	2.04%	2.55%	98.88%	98.09%	97.92%
Female	40.40%	42.63%	37.48%	40.40%	42.50%	43.42%	*	13.62%	17.40%	*	1.26%	1.70%	98.02%	98.32%	98.22%
Male	16.48%	27.36%	23.87%	49.45%	45.96%	45.52%	*	23.78%	26.98%	*	2.91%	3.63%	100.00%	97.90%	97.72%

* Results cannot be published without releasing personally identifiable information based upon the EED reporting protocol

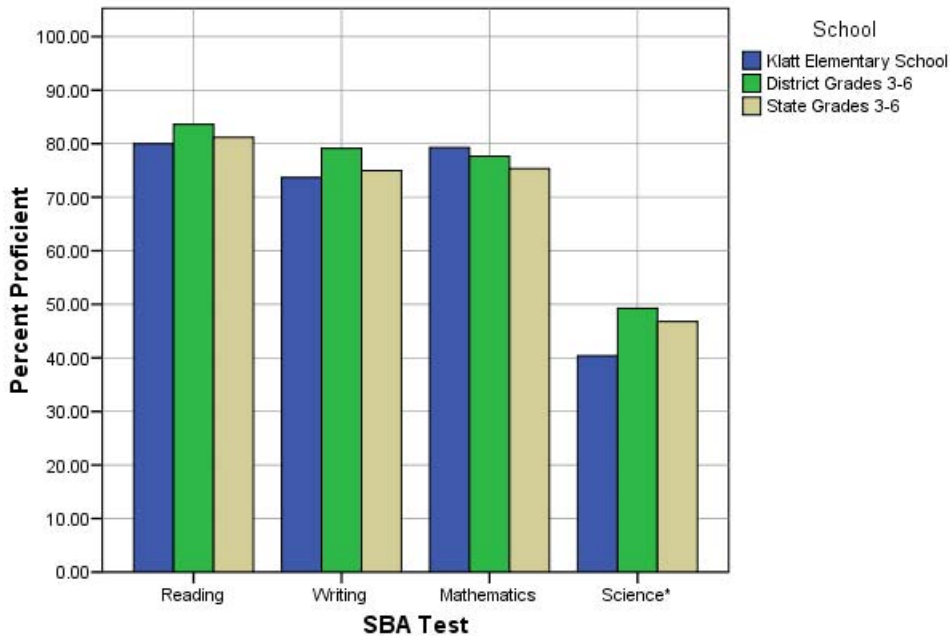
Mathematics: SBA Results Compared for Klatt Elementary School, District and State Grades 3 Through 6															
	% Advanced Proficient			% Proficient			% Below Proficient			% Far Below Proficient			% Tested		
	School	District	State	School	District	State	School	District	State	School	District	State	School	District	State
All Students	45.08%	39.81%	36.08%	34.20%	37.84%	39.26%	11.92%	12.46%	13.78%	8.81%	9.88%	10.88%	100.00%	98.52%	98.12%
AF AM	*	19.48%	22.09%	*	40.14%	41.60%	*	20.19%	18.61%	*	20.19%	17.70%	100.00%	98.38%	97.78%
AKNA/AI	45.00%	23.20%	18.26%	25.00%	39.51%	39.14%	*	19.22%	21.79%	*	18.07%	20.81%	100.00%	96.96%	97.72%
Asian	41.03%	37.02%	34.29%	48.72%	41.20%	41.23%	*	13.76%	14.10%	*	8.03%	10.38%	100.00%	99.27%	98.99%
NH/OPI	*	18.52%	N/A	*	38.07%	N/A	*	20.16%	N/A	*	23.25%	N/A	N/A	99.39%	N/A
White	54.69%	51.12%	45.75%	28.13%	35.15%	38.35%	10.94%	8.41%	9.81%	6.25%	5.32%	6.09%	100.00%	98.69%	98.17%
Hispanic	34.04%	31.85%	31.11%	36.17%	40.04%	42.19%	14.89%	15.02%	15.10%	14.89%	13.09%	11.60%	100.00%	98.66%	98.47%
ME	52.38%	33.75%	35.45%	33.33%	41.21%	40.61%	*	13.93%	13.30%	*	11.11%	10.64%	100.00%	98.26%	98.00%
EDS	33.96%	24.26%	23.31%	37.74%	41.50%	40.98%	16.04%	17.54%	18.60%	12.26%	16.70%	17.11%	100.00%	98.14%	96.77%
Not EDS	58.62%	50.70%	45.67%	29.89%	35.28%	37.96%	6.90%	8.91%	10.16%	4.60%	5.12%	6.21%	100.00%	98.79%	99.16%
SWD	27.59%	12.52%	12.06%	27.59%	31.53%	32.14%	27.59%	23.68%	23.60%	17.24%	32.27%	32.20%	100.00%	94.19%	93.99%
Non-SWD	48.17%	44.69%	40.12%	35.37%	38.97%	40.45%	9.15%	10.46%	12.13%	7.32%	5.88%	7.30%	100.00%	99.34%	98.85%
LEP	10.71%	8.22%	6.05%	39.29%	36.74%	34.10%	28.57%	24.50%	27.43%	21.43%	30.54%	32.42%	100.00%	97.95%	97.56%
Not LEP	50.91%	42.73%	40.09%	33.33%	37.94%	39.95%	9.09%	11.35%	11.96%	6.67%	7.98%	8.01%	100.00%	98.57%	98.19%
Migrant	42.86%	30.94%	22.37%	35.71%	43.65%	40.27%	*	14.21%	20.36%	*	11.20%	17.00%	100.00%	98.68%	98.54%
Not Migrant	45.25%	40.21%	37.05%	34.08%	37.58%	39.19%	11.73%	12.38%	13.31%	8.94%	9.83%	10.45%	100.00%	98.51%	98.09%
Female	46.53%	41.01%	36.83%	36.63%	38.32%	39.88%	6.93%	11.59%	13.34%	9.90%	9.09%	9.96%	100.00%	98.71%	98.31%
Male	43.48%	38.66%	35.38%	31.52%	37.38%	38.67%	17.39%	13.30%	14.20%	7.61%	10.66%	11.75%	100.00%	98.34%	97.94%

* Results cannot be published without releasing personally identifiable information based upon the EED reporting protocol

Science: SBA Results Compared for Klatt Elementary School, District and State Grade 4															
	% Advanced Proficient			% Proficient			% Below Proficient			% Far Below Proficient			% Tested		
	School	District	State	School	District	State	School	District	State	School	District	State	School	District	State
All Students	13.46%	23.68%	22.1%	26.92%	25.57%	24.7%	42.31%	31.70%	31.3%	17.31%	19.06%	21.9%	96.30%	97.81%	95.35%
AF AM	*	9.18%	8.9%	*	18.84%	23.3%	*	39.13%	38.0%	*	32.85%	29.8%	100.00%	98.57%	94.49%
AKNA/AI	*	6.54%	6.8%	*	21.50%	14.2%	*	42.99%	35.2%	*	28.97%	43.8%	100.00%	96.40%	94.98%
Asian	*	10.18%	13.4%	23.08%	21.40%	19.4%	53.85%	39.30%	37.5%	*	29.12%	29.7%	100.00%	98.28%	97.39%
NH/OPI	*	6.57%	N/A	*	8.03%	N/A	*	34.31%	N/A	*	51.09%	N/A	N/A	98.56%	N/A
White	26.67%	36.40%	32.3%	26.67%	29.08%	29.9%	*	25.33%	27.3%	*	9.19%	10.5%	100.00%	97.87%	94.97%
Hispanic	*	16.17%	18.2%	*	26.15%	26.0%	35.71%	32.08%	33.9%	28.57%	25.61%	21.9%	87.50%	97.12%	96.39%
ME	*	16.06%	18.5%	*	26.12%	26.8%	*	37.47%	35.9%	*	20.34%	18.7%	100.00%	98.32%	96.90%
EDS	*	8.34%	11.0%	*	22.44%	20.1%	50.00%	38.10%	34.7%	23.33%	31.12%	34.2%	93.75%	97.73%	94.99%
Not EDS	22.73%	35.00%	31.2%	36.36%	27.88%	28.5%	*	26.97%	28.5%	*	10.15%	11.9%	100.00%	97.87%	95.64%
SWD	*	8.38%	7.7%	*	16.38%	15.2%	*	36.57%	36.6%	*	38.67%	40.5%	100.00%	93.25%	91.70%
Non-SWD	14.89%	26.43%	24.7%	25.53%	27.22%	26.4%	42.55%	30.82%	30.4%	17.02%	15.53%	18.5%	95.92%	98.68%	96.04%
LEP	*	2.00%	1.5%	*	5.14%	3.8%	45.45%	34.00%	28.3%	36.36%	58.86%	66.5%	84.62%	96.15%	95.67%
Not LEP	17.07%	26.13%	25.2%	29.27%	27.88%	27.9%	41.46%	31.44%	31.8%	12.20%	14.55%	15.1%	100.00%	98.00%	95.30%
Migrant	*	9.70%	9.0%	*	26.87%	15.3%	*	39.55%	34.3%	*	23.88%	41.4%	100.00%	97.10%	97.32%
Not Migrant	12.50%	24.24%	23.0%	29.17%	25.51%	25.3%	41.67%	31.38%	31.1%	16.67%	18.86%	20.5%	96.00%	97.84%	95.21%
Female	12.90%	22.73%	20.8%	32.26%	25.78%	25.2%	*	33.63%	32.6%	*	17.87%	21.4%	96.88%	98.05%	95.43%
Male	14.29%	24.61%	23.4%	19.05%	25.36%	24.2%	33.33%	29.80%	30.1%	33.33%	20.23%	22.3%	95.45%	97.58%	95.27%

* Results cannot be published without releasing personally identifiable information based upon the EED reporting protocol

2007-08 SBA Results Compared for Klatt Elementary School, District and State

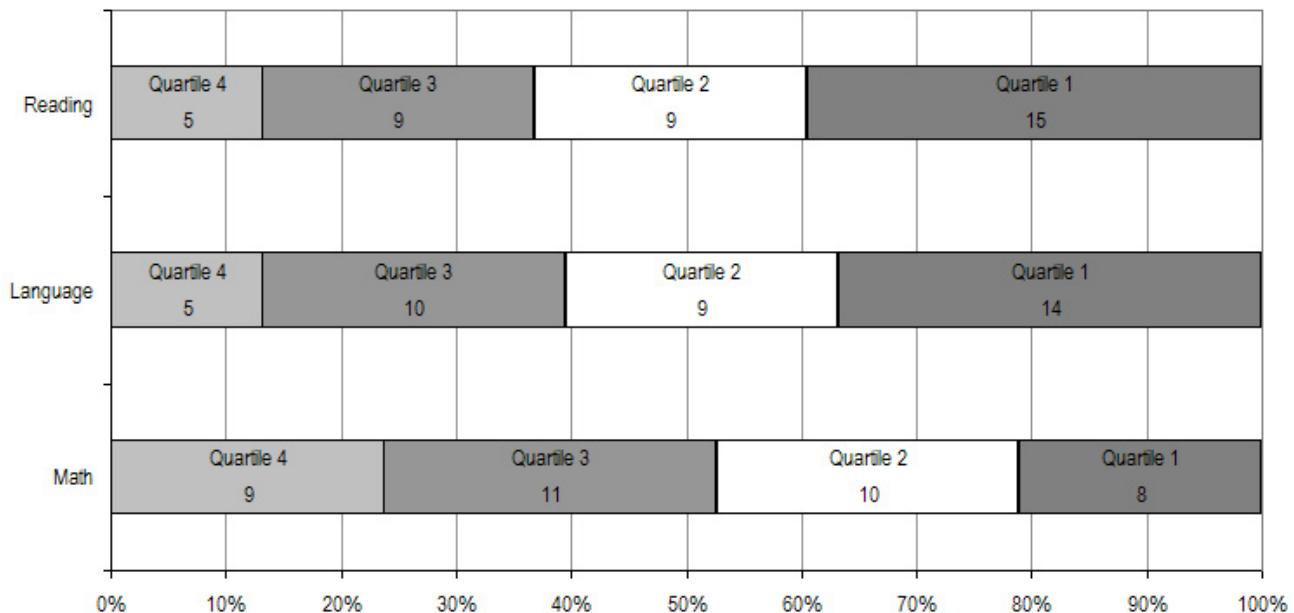


* 2007-08 was the first year Science was administered for grades 4, 8 and 10 on the SBA.

Klatt Elementary School TerraNova Grade 5 Percent in Each Quartile								
Reading	Above Average		Average				Below Average	
	4th Quartile (76-99 percentile)		3rd Quartile (51-75 percentile)		2nd Quartile (26-50 percentile)		1st Quartile (1-25 percentile)	
	School	District	School	District	School	District	School	District
07-08	13.16%	25.65%	23.68%	24.08%	23.68%	23.73%	39.47%	26.55%
06-07	30.6%	33.1%	24.5%	26.1%	26.5%	23.6%	18.4%	17.2%
05-06	27.0%	30.4%	28.6%	26.8%	25.4%	24.5%	19.0%	18.3%
04-05	25.5%	29.2%	19.6%	27.6%	35.3%	24.5%	19.6%	18.7%
03-04	27.4%	30.6%	21.0%	26.9%	29.0%	24.2%	22.6%	18.3%
Language								
07-08	13.16%	26.79%	26.32%	27.20%	23.68%	24.12%	36.84%	21.89%
06-07	28.6%	34.7%	30.6%	26.9%	16.3%	21.4%	24.5%	17.0%
05-06	28.6%	34.0%	30.2%	26.5%	25.4%	22.0%	15.9%	17.5%
04-05	19.6%	32.1%	37.3%	28.3%	27.5%	21.2%	15.7%	18.4%
03-04	22.6%	34.1%	24.2%	26.5%	24.2%	21.7%	29.0%	17.7%
Mathematics								
07-08	23.68%	25.45%	28.95%	26.40%	26.32%	24.47%	21.05%	23.68%
06-07	34.7%	29.7%	24.5%	31.6%	26.5%	21.2%	14.3%	17.4%
05-06	26.6%	28.4%	42.2%	31.9%	20.3%	22.3%	10.9%	17.5%
04-05	17.6%	26.9%	25.5%	31.1%	27.5%	22.9%	29.4%	19.1%
03-04	19.4%	28.3%	27.4%	29.3%	25.8%	22.6%	27.4%	19.8%

The double bold line indicates a change from the TerraNova 2nd edition to the TerraNova 3rd edition.

2007-08 TerraNova 3rd Edition Grade 5 Percent and Count of Students in Each Quartile For Klatt Elementary School



Climate Survey Results for Klatt Elementary School

The Anchorage School District administered the School Climate and Connectedness Surveys in spring 2008 to students in grades 5-12, all school staff and parents/guardians of students in grades K-12. The surveys were done to provide schools with information about perceptions and experiences related to school climate for use in setting school goals and redirecting resources. In the spring of 2008 grades 3 and 4 students were involved in a pilot survey for measuring school climate and connectedness. The results are currently under review by the American Institutes for Research.

Respondents were asked to answer a series of questions that were related to a certain concept. For each item, there were five options from which to choose a response. The answer options ranged from strongly disagree (1) to strongly agree (5).

Student Survey Response Rate – Grades 5-12			
	Klatt Elementary School	Overall Elementary Schools	District**
# Surveys Completed	79	5,579	21,629
# Reportable Surveys	70	4,969	18,654
# Students Enrolled*	91	6,331	28,945
Reportable Response Rate	76.92%	78.49%	64.45%

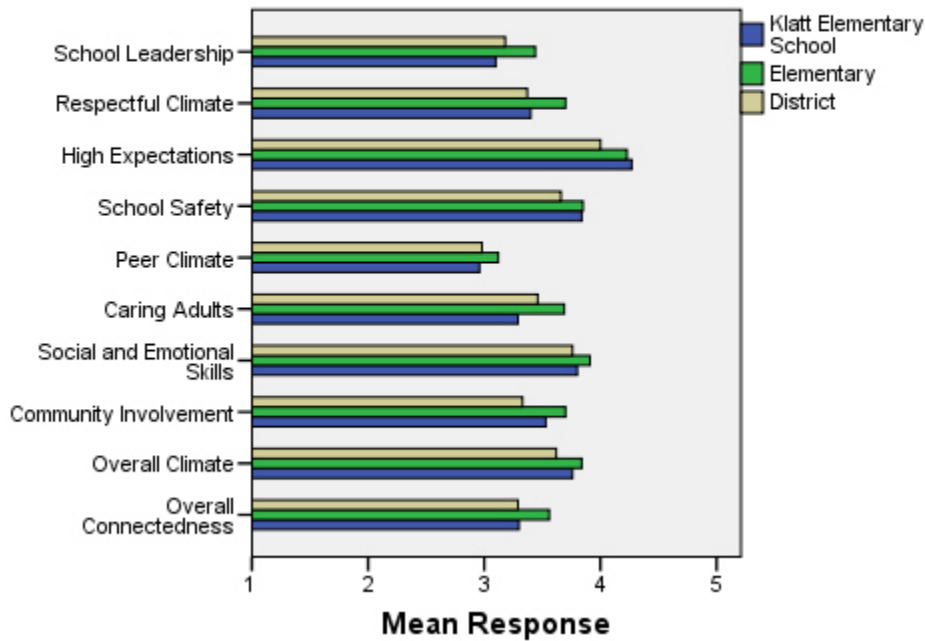
*Number enrolled as of April 1, 2008

**District data does not include KCC responses

Each question in the survey related to a factor or concept, and a score was calculated based on the mean response for the questions related to each factor. The factors measured in the survey were:

- **School Leadership and Student Involvement:** This factor reflects students' feelings about the decision making of school leaders as well as student participation in the school governance. Students selected responses between 1 and 5 where 1 indicates a low level of school leadership and student involvement and 5 indicates a high level of school leadership and student involvement.
- **Respectful Climate:** This factor reflects students' feelings about fairness of rules and respect for students' contributions. Students selected responses between 1 and 5 where 1 indicates a lack of a respectful climate and 5 indicates a highly respectful climate for students.
- **High Expectations:** This factor reflects students' feelings about their own expectations as well as those of adults in their school and community. Students selected responses between 1 and 5 where 1 indicates a lack of high expectations and 5 indicates a high level of high expectations.
- **School Safety:** This factor reflects students' feelings about bullies and gangs at school as well as general crime and violence in the community. Students selected responses between 1 and 5 where 1 indicates a low level of school safety and 5 indicates a high level of school safety.
- **Peer Climate:** This factor reflects students' feelings about how respectful students are to one another and how helpful students are to other students. Students selected responses between 1 and 5 where 1 indicates a more negative peer climate and 5 indicates a very positive peer climate at the school.
- **Caring Adults:** This factor reflects students' feelings about how close they feel to adults in the school. Students selected responses between 1 and 5 where 1 indicates a lack of caring adult relationships and 5 indicates strong caring adult relationships at the school.
- **Social and Emotional Learning:** This factor reflects students' ability to think about the consequences of their actions and to empathize with others. Students selected responses between 1 and 5 where 1 indicates that students at the school perceive themselves as having poorer social and emotional learning, and 5 indicates higher levels of social and emotional learning.
- **Community Involvement:** This factor reflects students' feelings about how supportive and welcoming the school is with parents and the community. Students selected responses between 1 and 5 where 1 indicates a less supportive and welcoming environment and 5 indicates a more supportive and welcoming environment.
- **Overall Climate:** The overall climate score was computed as the mean of three scales: school leadership, high expectations and school safety.
- **Overall Connectedness:** Overall connectedness score was computed as a mean of four scales: respectful climate, peer climate, caring adults and community involvement.

Climate and Connectedness Student Survey - Klatt



Student Survey Mean Response by Factors Related to School Climate - Overall District			
	Klatt Elementary School	Overall Elementary Schools	District
School Leadership	3.10	3.44	3.18
Respectful Climate	3.40	3.70	3.37
High Expectations	4.27	4.23	4.00
School Safety	3.84	3.85	3.66
Peer Climate	2.96	3.12	2.98
Caring Adults	3.29	3.69	3.46
Social and Emotional Skills	3.80	3.91	3.76
Community Involvement	3.53	3.70	3.33
Overall Climate	3.76	3.84	3.62
Overall Connectedness	3.30	3.56	3.29

Range is from a low of 1 to a high of 5

Students were also asked to answer questions related to school danger. The following table provides the responses for those questions:

Student Survey Results of the School Danger Questions - Percent of Students Responding in Each Category					
	0 Times	1-2 Times	3-6 Times	7-12 Times	> 12 Times
Klatt Elementary School					
Under the influence of drugs?	91.30%	5.80%	0.00%	0.00%	2.90%
Under the influence of alcohol?	87.14%	11.43%	0.00%	1.43%	0.00%
Destroy things (vandalism)?	55.71%	22.86%	12.86%	4.29%	4.29%
Get into fights?	25.71%	32.86%	18.57%	12.86%	10.00%
Steal things?	42.86%	30.00%	10.00%	2.86%	14.29%
Threaten or bully?	30.00%	28.57%	18.57%	5.71%	17.14%
Under the influence of inhalants?	73.91%	14.49%	5.80%	2.90%	2.90%
Carry weapons?	84.29%	11.43%	2.86%	0.00%	1.43%
Overall Elementary Schools					
Under the influence of drugs?	91.87%	5.65%	1.22%	0.31%	0.96%
Under the influence of alcohol?	91.42%	6.01%	1.16%	0.51%	0.90%
Destroy things (vandalism)?	46.82%	32.08%	12.45%	3.30%	5.36%
Get into fights?	22.32%	35.75%	22.56%	7.96%	11.41%
Steal things?	49.79%	27.92%	12.01%	4.33%	5.95%
Threaten or bully?	32.34%	28.83%	17.08%	7.78%	13.97%
Under the influence of inhalants?	71.03%	17.07%	6.14%	2.63%	3.12%
Carry weapons?	79.22%	15.35%	3.17%	0.59%	1.68%
District					
Under the influence of drugs?	60.45%	15.05%	9.54%	3.92%	11.04%
Under the influence of alcohol?	63.11%	16.37%	8.90%	4.43%	7.19%
Destroy things (vandalism)?	41.26%	29.47%	15.45%	5.88%	7.94%
Get into fights?	26.40%	35.20%	21.96%	7.11%	9.33%
Steal things?	44.80%	25.68%	13.81%	6.98%	8.74%
Threaten or bully?	32.21%	26.21%	16.68%	9.27%	15.63%
Under the influence of inhalants?	72.79%	14.21%	5.66%	2.48%	4.87%
Carry weapons?	69.45%	19.15%	5.34%	2.01%	4.06%

Student Survey Results of the Mean Factor Score by Ethnicity (Self-Reported)							
	AKNA/AI	AF AM	Hispanic	Asian/NH	White	Other	Multi-Ethnic
Klatt Elementary School							
School Leadership	3.62	3.00	3.89	2.75	2.89	2.80	2.68
Respectful Climate	3.82	***	3.75	3.15	3.03	3.28	3.54
High Expectations	4.33	***	4.40	4.24	4.32	3.95	4.27
School Safety	4.04	3.60	3.60	3.95	3.80	3.96	3.80
Peer Climate	3.26	3.40	3.10	3.11	2.86	2.50	2.78
Caring Adults	3.40	3.00	3.20	3.32	3.37	3.17	3.34
Social and Emotional Skills	3.95	3.40	3.82	3.89	3.71	3.61	3.84
Community Involvement	3.92	3.29	3.65	3.38	3.43	3.21	3.59
Overall Climate	4.00	***	4.01	3.66	3.67	3.64	3.58
Overall Connectedness	3.61	***	3.52	3.23	3.13	3.04	3.33
Overall Elementary Schools							
School Leadership	3.56	3.50	3.52	3.55	3.37	3.44	3.42
Respectful Climate	3.75	3.60	3.66	3.72	3.71	3.69	3.63
High Expectations	4.12	4.23	4.23	4.22	4.26	4.19	4.25
School Safety	3.75	3.63	3.73	3.68	4.03	3.66	3.79
Peer Climate	3.12	2.94	3.12	3.18	3.16	3.05	3.05
Caring Adults	3.64	3.73	3.64	3.59	3.74	3.60	3.76
Social and Emotional Skills	3.86	3.84	3.91	3.95	3.93	3.90	3.89
Community Involvement	3.66	3.60	3.67	3.66	3.75	3.66	3.70
Overall Climate	3.81	3.79	3.84	3.81	3.89	3.76	3.82
Overall Connectedness	3.56	3.49	3.51	3.53	3.60	3.49	3.56
District							
School Leadership	3.33	3.14	3.19	3.28	3.14	3.17	3.15
Respectful Climate	3.48	3.18	3.32	3.39	3.39	3.37	3.33
High Expectations	3.98	3.94	3.96	4.02	4.02	4.00	4.01
School Safety	3.60	3.48	3.55	3.47	3.78	3.51	3.62
Peer Climate	3.01	2.85	2.94	3.05	3.00	2.92	2.93
Caring Adults	3.49	3.43	3.37	3.33	3.51	3.42	3.46
Social and Emotional Skills	3.73	3.66	3.73	3.81	3.78	3.75	3.74
Community Involvement	3.37	3.22	3.31	3.29	3.34	3.34	3.31
Overall Climate	3.64	3.52	3.57	3.59	3.65	3.56	3.60
Overall Connectedness	3.33	3.17	3.24	3.26	3.31	3.26	3.27

***Results can not be calculated because of missing responses

The response rate is not high enough to provide statistically reliable results for Klatt Elementary School’s Staff Survey Results.

The response rate is not high enough to provide statistically reliable results for Klatt Elementary School’s Parent/Guardian Survey Results.