

Lake Otis Elementary School Overview

Statement of Program

Lake Otis Elementary School provides a complete education for children in grades K–6 in a traditional neighborhood setting, adjacent to Wendler Middle School and the University of Alaska Anchorage. A strong focus on the individual child is evident daily.

Lake Otis offers an excellent academic program, as well as before and after-school activities that support the physical and academic growth of our students. Activities such as athletics and family nights are intended to boost student participation and parent involvement. Others specifically support student academic achievement, including an after-school tutor program, accelerated reading, Math Derby, Battle of the Books and morning computer lab.

Our PTA and staff are dedicated to providing more learning experiences for students such as chorus, community service, student council and bicycle rodeo. We are proud of our school's accomplishments and look forward to improving all aspects of our education community.

From the School Report Card

School Goals	
Goal	Level of Achievement
The number of students in grades 3-6 rated not proficient on the state language arts assessment will decrease by 10 percent.	Partially Attained
The number of students in grades 3-6 rated not proficient on the state math assessment will decrease by 10 percent.	Not Attained
The number of second-graders rated not proficient on the district reading assessment will decrease by 25 percent.	Attained

From the School Report Card

Budget*	
2006-07 Actual Expenditures	\$2,200,722
2007-08 Revised Budgeted Amount	\$2,572,934
2008-09 Proposed Budget	\$2,824,383

*Dollars budgeted or expended are general fund only
From IFAS

Lake Otis Elementary School Characteristics			
	School	District	Source of Information
Membership	434	48,858	Fall OASIS
Capacity	90.55%	N/A	2008-18 ASD Capital Improvement Plan
Attendance Rate	91.52%	92.83%	NCLB Summer Data Collection
Retention Rate K-8	0.91%	0.60%	SMS and NCLB Summer Data Collection
Transiency Rate	24.49%	26.07%	NCLB Summer Data Collection
Economically Disadvantaged	246	17,717	Fall OASIS
Average Weekly Volunteer Hours	50	4,660	Department of Education Report Card Report
Students Taking the Alternate Assessment	6	228	SMS
Change in Enrollment	15.43%	-0.76%	Fall Oasis

Teacher Qualification				
Number of Teachers	Percent Fully Licensed	Percent With Advanced Degrees	Number Nationally Board Certified	Percent of Classes Taught by "Highly Qualified Teachers"
32	100.00%	28.12%	1	96.29%

Lake Otis Elementary School Business Partnerships
Credit Union 1, Don Jose's Mexican Restaurant

From the School Report Card

Ethnicity Report							
African-American/Black	Alaska Native/American Indian	Asian	Native Hawaiian/Other Pacific Islander	White	Hispanic	Multi-Ethnic	Total
23	71	51	8	141	68	72	434

From Fall Oasis

Full Academic Year		
Students Enrolled	Students Enrolled for FAY	Percent FAY
444	392	88.29%

From participation file (Grades 3-10)

Lake Otis Elementary School
2007-08 Adequate Yearly Progress
Status Report

Does Not Meet AYP
Level 2

AMO For Language Arts: 77.18%
AMO For Mathematics: 66.09%

Group	Participation Rate				"FAY" (D) Tested & Enrolled "FAY"	Language Arts Performance				Mathematics Performance			
	(A) Number Enrolled	(B) Number Tested	Participation Rate (%)	(C) Participation Rate Met		(E) Proficient on LA	(F) Percent Proficient on LA	(G) LA Target	(H) Met AMO for LA	(I) Proficient on Mathematics	(J) Percent Proficient in Mathematics	(K) Mathematics Target	(L) Met AMO for Mathematics
All Students	259	259	100%	Yes	234	160	68.4%	70.8%	No	152	65%	58.9%	Yes
AF AM	10	10	N/A	N/A	N/A	N/A	N/A	N/A	N/A	N/A	N/A	N/A	N/A
AKNA/AI	52	52	100%	Yes	42	32	76.2%	62.1%	Yes	26	61.9%	49.1%	Yes
Asian/NH/OPI	36	36	100%	Yes	36	24	66.7%	60.9%	Yes	27	75%	47.7%	Yes
White	80	80	100%	Yes	76	53	69.7%	66%	Yes	51	67.1%	53.4%	Yes
Hispanic	36	36	100%	Yes	35	22	62.9%	60.7%	Yes	19	54.3%	47.4%	Yes
ME	45	45	100%	Yes	39	24	61.5%	61.5%	Yes	25	64.1%	48.4%	Yes
EDS	159	159	100%	Yes	139	83	59.7%	68.9%	No	80	57.6%	56.7%	Yes
SWD	53	53	100%	Yes	45	16	35.6%	62.6%	Yes-SH	11	24.4%	49.6%	Yes-SH
LEP	65	65	100%	Yes	64	35	54.7%	65%	No	37	57.8%	52.3%	Yes

Attendance Rate: Met

91.5% (Threshold is 85%)

N/A is used to indicate:

(1) Subgroups with 20 or fewer students enrolled on the first day of testing shall not be included in participation rate calculation.

(2) Subgroups with 25 or fewer students enrolled for the "full academic year" shall not have the performance score computed.

* For the groups where the number enrolled is less than or equal to 40, participation is met when no more than two miss the test. Groups can also meet this target using the average of the past two or three years.

** When a group achieves a "Yes" without meeting the listed target, it has done so using either the 99% confidence interval or Safe Harbor.

*** The results cannot be published without releasing personally identifiable information based upon the EED reporting protocol.

This document was prepared by the ASD Assessment and Evaluation Department.

7/10/2008

Lake Otis Elementary School
2007-08 Adequate Yearly Progress
Growth Report

The AYP growth reports are generated by the Alaska State Department of Education and Early Development. The reports can be found online at: http://www.asdk12.org/depts/assess_eval/AYP/State_ASD_AYG_0708.pdf

SBA Proficiency Comparison by Grade for Lake Otis Elementary School																
	Reading Percent Proficient				Writing Percent Proficient				Mathematics Percent Proficient				Science* Percent Proficient			
	04-05	05-06	06-07	07-08	04-05	05-06	06-07	07-08	04-05	05-06	06-07	07-08	04-05	05-06	06-07	07-08
All Students	82.05%	81.22%	87.82%	73.52%	80.34%	79.07%	77.04%	65.61%	72.34%	70.18%	71.72%	64.43%	N/A	N/A	N/A	32.35%
Grade 3	72.13%	72.09%	88.46%	75.00%	67.21%	68.18%	78.43%	72.06%	70.49%	61.36%	80.39%	70.59%	N/A	N/A	N/A	N/A
Grade 4	82.69%	74.07%	92.31%	77.94%	82.69%	83.33%	90% or more	69.12%	71.15%	67.86%	75.00%	64.71%	N/A	N/A	N/A	32.35%
Grade 5	84.29%	88.68%	85.45%	72.88%	82.86%	79.63%	69.09%	59.32%	73.24%	70.91%	60.71%	61.02%	N/A	N/A	N/A	N/A
Grade 6	90.20%	87.30%	86.27%	67.24%	90.20%	82.54%	70.59%	60.34%	74.51%	77.78%	72.55%	60.34%	N/A	N/A	N/A	N/A

* 2007-08 was the first year Science was administered for grades 4, 8 and 10 on the SBA.

SBA Proficient & Not Proficient by NCLB Groups for Lake Otis Elementary School								
	Reading		Writing		Mathematics		Science**	
	Percent Proficient	Percent Not Proficient	Percent Proficient	Percent Not Proficient	Percent Proficient	Percent Not Proficient	Percent Proficient	Percent Not Proficient
All Students	73.52%	26.48%	65.61%	34.39%	64.43%	35.57%	32.35%	67.65%
AF AM	70.00%	30.00%	40.00%	60.00%	40.00%	60.00%	*	*
AKNA/AI	72.55%	27.45%	60.78%	39.22%	58.82%	41.18%	80% or fewer	20% or more
Asian	60.00%	40.00%	60.00%	40.00%	76.67%	23.33%	30.00%	70.00%
NH/OPI	60% or more	40% or fewer	60% or more	40% or fewer	60% or more	40% or fewer	*	*
White	79.22%	20.78%	75.32%	24.68%	70.13%	29.87%	29.41%	70.59%
Hispanic	75.00%	25.00%	63.89%	36.11%	55.56%	44.44%	40.00%	60.00%
ME	69.77%	30.23%	62.79%	37.21%	65.12%	34.88%	42.86%	57.14%
EDS	66.67%	33.33%	56.41%	43.59%	57.05%	42.95%	28.00%	72.00%
Non-EDS	84.54%	15.46%	80.41%	19.59%	76.29%	23.71%	44.44%	55.56%
SWD	30.00%	70.00%	27.50%	72.50%	15.00%	85.00%	80% or fewer	20% or more
Non-SWD	81.69%	18.31%	72.77%	27.23%	73.71%	26.29%	36.21%	63.79%
LEP	15.38%	84.62%	19.23%	80.77%	26.92%	73.08%	60% or fewer	40% or more
Not LEP	80.18%	19.82%	70.93%	29.07%	68.72%	31.28%	33.33%	66.67%
Migrant	63.64%	36.36%	54.55%	45.45%	54.55%	45.45%	*	*
Not Migrant	73.97%	26.03%	66.12%	33.88%	64.88%	35.12%	31.82%	68.18%
Female	81.30%	18.70%	74.80%	25.20%	66.67%	33.33%	33.33%	66.67%
Male	66.15%	33.85%	56.92%	43.08%	62.31%	37.69%	31.03%	68.97%

* Results cannot be published without releasing personally identifiable information based upon the EED reporting protocol

** 2007-08 was the first year Science was administered for grades 4, 8 and 10 on the SBA.

SBA Mean Scale Score Comparison by NCLB Groups for Lake Otis Elementary School								
	Reading		Writing		Mathematics		Science***	
	06-07	07-08	06-07	07-08	06-07	07-08	06-07	07-08
All Students	377.21	357.20	365.31	343.19	350.41	333.09	N/A	267.28
AF AM	378.38	341.90	377.44	305.80	339.00	290.80	N/A	*
AKNA/AI	355.73	342.31	352.77	334.12	338.86	321.37	N/A	235.15
Asian**	383.83	348.20	374.41	334.50	358.13	339.47	N/A	276.90
NH/OPI**	N/A	365.50	N/A	357.17	N/A	345.33	N/A	*
White	398.07	375.52	377.84	358.69	367.00	349.53	N/A	266.24
Hispanic	321.00	353.19	286.13	342.19	306.44	318.11	N/A	270.00
ME	383.56	354.07	382.96	339.81	352.48	333.77	N/A	289.14
EDS	366.14	340.17	353.11	324.06	341.25	317.70	N/A	260.30
Non-EDS	394.83	384.59	384.99	373.95	365.44	357.85	N/A	286.67
SWD	294.00	283.18	266.78	265.90	259.26	256.23	N/A	214.60
Non-SWD	390.42	371.10	381.05	357.70	364.81	347.53	N/A	276.36
LEP	352.47	281.12	340.80	267.85	326.55	273.46	N/A	241.40
Not LEP	385.40	365.91	373.48	351.81	358.69	339.92	N/A	269.33
Migrant	353.67	315.09	357.67	295.18	302.33	299.18	N/A	*
Not Migrant	377.95	359.11	365.55	345.37	351.92	334.63	N/A	267.64
Female	390.76	369.38	382.59	360.93	358.36	338.89	N/A	266.79
Male	363.80	345.67	348.02	326.39	342.46	327.61	N/A	267.93

* Results cannot be published without releasing personally identifiable information based upon the EED reporting protocol

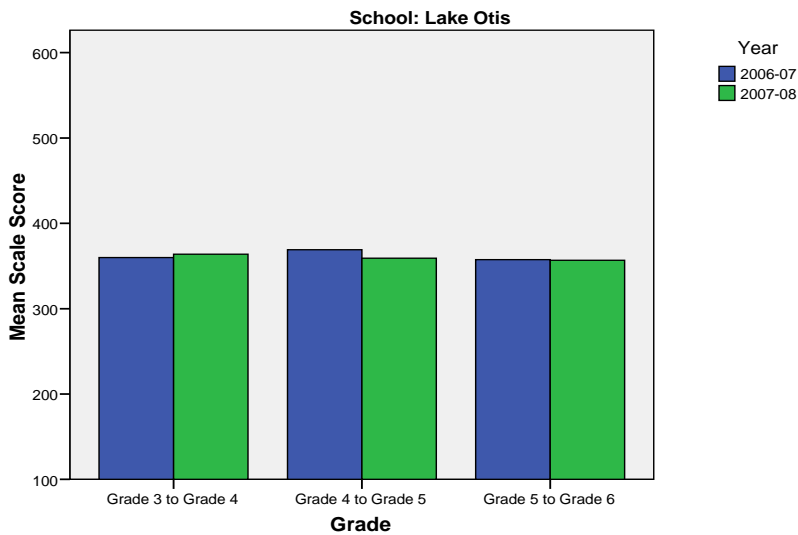
** Prior to 2007-08 the Asian category includes Native Hawaiian/Other Pacific Islander. In 2007-08 Native Hawaiian/Other Pacific Islander is a separate ethnic category.

*** 2007-08 was the first year Science was administered for grades 4, 8 and 10 on the SBA.

Lake Otis Elementary School SBA Change Average Scale Score by NCLB Groups: Reading									
	Average Scale Score of Students Tested in District Both Years			Average Scale Score of Students Tested in District Both Years			Average Scale Score of Students Tested in District Both Years		
	Grade 3 in 06-07	Grade 4 in 07-08	Difference	Grade 4-in 06-07	Grade 5 in 07-08	Difference	Grade 5-in 06-07	Grade 6 in 07-08	Difference
All Students	359.93	363.85	3.92	369.02	359.07	-9.95	357.41	356.71	-0.69
AF AM	*	*	*	*	*	*	*	*	*
AKNA/AI	320.44	311.44	-9.00	350.82	349.27	-1.55	380.63	369.38	-11.25
Asian	340.63	357.75	17.13	403.50	391.67	-11.83	320.17	308.50	-11.67
NH/OPI	*	*	*	*	*	*	*	*	*
White	345.38	360.06	14.69	391.13	375.40	-15.73	405.38	416.44	11.06
Hispanic	388.22	377.56	-10.67	359.14	361.86	2.71	321.90	306.60	-15.30
ME	394.38	393.92	-0.46	346.00	329.40	-16.60	308.60	321.80	13.20
EDS	349.27	355.00	5.73	341.89	329.21	-12.68	342.18	340.00	-2.18
Non-EDS	391.20	389.80	-1.40	396.14	388.93	-7.21	377.71	379.00	1.29
SWD	281.33	276.33	-5.00	265.75	258.13	-7.63	279.33	270.17	-9.17
Non-SWD	374.08	379.60	5.52	386.23	375.90	-10.33	368.30	368.79	0.49
LEP	*	*	*	*	*	*	296.25	263.38	-32.88
Not LEP	365.71	371.49	5.78	371.81	363.79	-8.02	369.34	374.93	5.59
Migrant	*	*	*	*	*	*	*	*	*
Not Migrant	360.58	362.88	2.30	375.79	364.46	-11.33	358.40	358.79	0.40
Female	371.65	380.45	8.81	400.96	390.29	-10.67	361.55	363.10	1.55
Male	346.96	345.46	-1.50	345.06	335.66	-9.41	354.55	352.31	-2.24

* Results cannot be published without releasing personally identifiable information based upon the EED reporting protocol

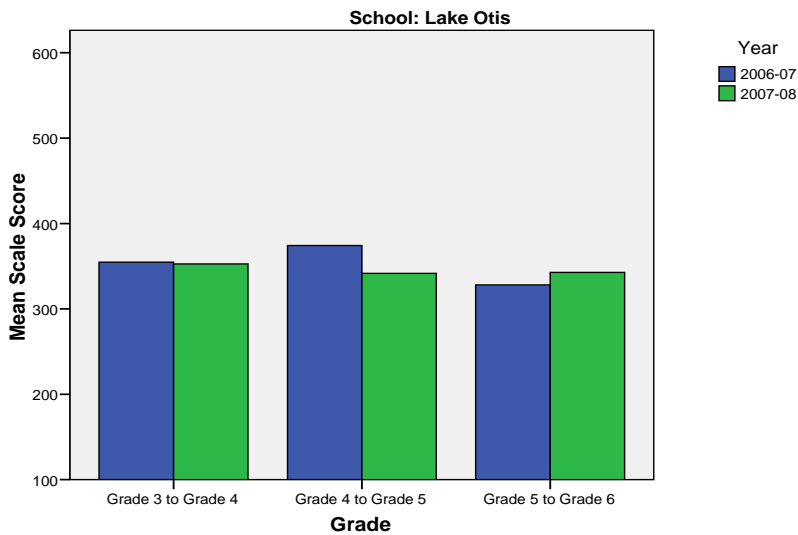
Change in Mean Scale Score in SBA Reading by Grade Between 2006-07 and 2007-08



Lake Otis Elementary School SBA Change Average Scale Score by NCLB Groups: Writing									
	Average Scale Score of Students Tested in District Both Years			Average Scale Score of Students Tested in District Both Years			Average Scale Score of Students Tested in District Both Years		
	Grade 3 in 06-07	Grade 4 in 07-08	Difference	Grade 4- in 06-07	Grade 5 in 07-08	Difference	Grade 5- in 06-07	Grade 6 in 07-08	Difference
All Students	354.64	352.78	-1.86	374.29	341.64	-32.64	328.08	342.86	14.78
AF AM	*	*	*	*	*	*	*	*	*
AKNA/AI	313.22	307.89	-5.33	354.36	331.45	-22.91	357.13	385.50	28.38
Asian	351.63	340.25	-11.38	390.83	359.00	-31.83	315.33	300.83	-14.50
NH/OPI	*	*	*	*	*	*	*	*	*
White	335.31	340.44	5.13	394.67	365.53	-29.13	359.94	393.50	33.56
Hispanic	363.33	370.56	7.22	341.14	338.86	-2.29	293.80	304.40	10.60
ME	401.46	385.69	-15.77	371.73	313.67	-58.07	275.40	273.40	-2.00
EDS	342.95	342.23	-0.73	342.96	302.39	-40.57	311.75	322.96	11.21
Non-EDS	388.93	383.73	-5.20	405.61	380.89	-24.71	349.86	369.38	19.52
SWD	271.22	280.56	9.33	270.38	234.13	-36.25	221.33	224.17	2.83
Non-SWD	369.66	365.78	-3.88	391.60	359.56	-32.04	342.98	359.42	16.44
LEP	*	*	*	*	*	*	243.75	230.88	-12.88
Not LEP	361.71	358.67	-3.04	379.19	345.19	-34.00	344.54	364.71	20.17
Migrant	*	*	*	*	*	*	*	*	*
Not Migrant	355.25	352.54	-2.70	378.44	347.75	-30.69	329.60	345.52	15.92
Female	369.06	367.68	-1.39	408.13	376.92	-31.21	349.25	365.85	16.60
Male	338.68	336.29	-2.39	348.91	315.19	-33.72	313.48	327.00	13.52

* Results cannot be published without releasing personally identifiable information based upon the EED reporting protocol

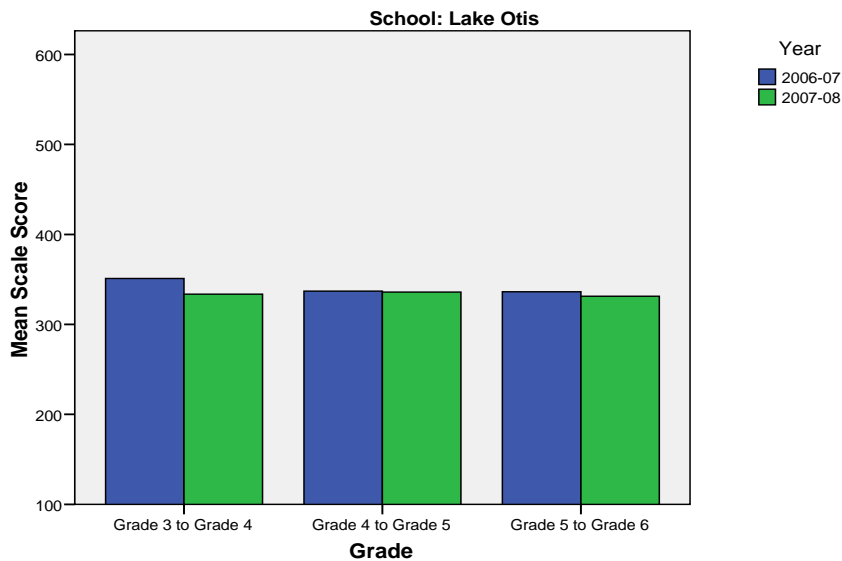
Change in Mean Scale Score in SBA Writing by Grade between 2006-07 and 2007-08



Lake Otis Elementary School SBA Change Average Scale Score by NCLB Groups: Mathematics									
	Average Scale Score of Students Tested in District Both Years			Average Scale Score of Students Tested in District Both Years			Average Scale Score of Students Tested in District Both Years		
	Grade 3 in 06-07	Grade 4 in 07-08	Difference	Grade 4- in 06-07	Grade 5 in 07-08	Difference	Grade 5- in 06-07	Grade 6 in 07-08	Difference
All Students	350.95	333.66	-17.29	336.95	335.86	-1.09	336.28	331.34	-4.94
AF AM	*	*	*	*	*	*	*	*	*
AKNA/AI	324.56	292.89	-31.67	336.00	339.27	3.27	341.50	326.50	-15.00
Asian	325.13	341.13	16.00	362.33	344.33	-18.00	316.43	331.29	14.86
NH/OPI	*	*	*	*	*	*	*	*	*
White	346.25	334.50	-11.75	350.13	338.07	-12.07	374.06	386.56	12.50
Hispanic	355.00	333.67	-21.33	329.71	326.14	-3.57	299.90	280.60	-19.30
ME	384.77	354.08	-30.69	309.87	326.47	16.60	313.40	269.20	-44.20
EDS	345.61	327.25	-18.36	305.57	308.79	3.21	320.54	304.43	-16.11
Non-EDS	366.60	352.47	-14.13	368.32	362.93	-5.39	356.32	365.59	9.27
SWD	263.33	250.00	-13.33	246.63	250.75	4.13	250.67	233.50	-17.17
Non-SWD	366.72	348.72	-18.00	352.00	350.04	-1.96	347.95	344.68	-3.27
LEP	*	*	*	*	*	*	265.11	255.22	-9.89
Not LEP	357.69	339.15	-18.55	339.72	340.43	0.72	351.90	348.05	-3.85
Migrant	*	*	*	*	*	*	*	*	*
Not Migrant	349.72	333.42	-16.30	340.08	338.71	-1.37	338.88	333.92	-4.96
Female	358.16	339.32	-18.84	360.17	361.83	1.67	351.40	325.75	-25.65
Male	342.96	327.39	-15.57	319.53	316.38	-3.16	326.20	335.07	8.87

* Results cannot be published without releasing personally identifiable information based upon the EED reporting protocol

Change in Mean Scale Score in SBA Mathematics by Grade between 2006-07 and 2007-08



Reading: SBA Results Compared for Lake Otis Elementary School, District and State Grades 3 Through 6															
	% Advanced Proficient			% Proficient			% Below Proficient			% Far Below Proficient			% Tested		
	School	District	State	School	District	State	School	District	State	School	District	State	School	District	State
All Students	28.85%	39.70%	35.67%	44.66%	43.89%	45.50%	20.95%	11.60%	13.02%	5.53%	4.80%	5.80%	97.68%	98.15%	97.98%
AF AM	*	20.73%	22.99%	50.00%	54.18%	53.49%	*	17.79%	16.46%	*	7.30%	7.06%	100.00%	98.04%	97.49%
AKNA/AI	15.69%	20.23%	14.62%	56.86%	51.11%	48.17%	*	18.54%	24.83%	*	10.11%	12.37%	98.08%	96.88%	97.59%
Asian	20.00%	30.22%	28.26%	40.00%	48.71%	51.04%	*	15.32%	15.32%	*	5.75%	5.38%	100.00%	97.64%	97.67%
NH/OPI	*	14.67%	N/A	83.33%	51.03%	N/A	*	24.59%	N/A	*	9.71%	N/A	100.00%	98.98%	N/A
White	41.56%	52.75%	47.28%	37.66%	38.06%	42.41%	14.29%	6.69%	7.27%	6.49%	2.50%	3.03%	96.25%	98.68%	98.28%
Hispanic	25.00%	32.35%	31.74%	50.00%	46.43%	48.60%	*	14.67%	13.66%	*	6.55%	6.00%	100.00%	97.14%	97.32%
ME	34.88%	33.26%	34.76%	34.88%	48.25%	47.75%	23.26%	13.47%	12.80%	6.98%	5.01%	4.70%	95.56%	98.15%	98.03%
EDS	20.51%	22.85%	21.47%	46.15%	49.71%	48.65%	27.56%	19.04%	20.31%	5.77%	8.40%	9.57%	98.11%	97.50%	96.44%
Not EDS	42.27%	51.44%	46.31%	42.27%	39.84%	43.15%	10.31%	6.42%	7.56%	5.15%	2.30%	2.98%	97.00%	98.61%	99.16%
SWD	*	10.08%	9.29%	*	37.10%	37.96%	40.00%	32.15%	31.20%	30.00%	20.67%	21.55%	86.96%	94.28%	93.60%
Non-SWD	33.80%	45.02%	40.09%	47.89%	45.12%	46.77%	*	7.91%	9.98%	*	1.95%	3.17%	100.00%	98.88%	98.75%
LEP	*	4.97%	3.12%	*	39.93%	38.06%	69.23%	37.14%	38.40%	15.38%	17.96%	20.42%	96.30%	94.25%	96.11%
Not LEP	31.72%	42.78%	39.95%	48.46%	44.25%	46.48%	15.42%	9.33%	9.68%	4.41%	3.64%	3.88%	97.84%	98.51%	98.23%
Migrant	*	27.01%	17.29%	63.64%	50.34%	48.58%	36.36%	16.44%	23.78%	*	6.21%	10.35%	100.00%	98.35%	98.50%
Not Migrant	30.17%	40.26%	36.97%	43.80%	43.61%	45.29%	20.25%	11.38%	12.26%	5.79%	4.74%	5.48%	97.58%	98.14%	97.94%
Female	33.33%	44.40%	39.45%	47.97%	43.41%	45.33%	16.26%	8.75%	10.85%	2.44%	3.44%	4.37%	97.62%	98.39%	98.31%
Male	24.62%	35.15%	32.09%	41.54%	44.37%	45.67%	25.38%	14.36%	15.08%	8.46%	6.13%	7.16%	97.74%	97.92%	97.66%

* Results cannot be published without releasing personally identifiable information based upon the EED reporting protocol

Writing: SBA Results Compared for Lake Otis Elementary School, District and State Grades 3 Through 6															
	% Advanced Proficient			% Proficient			% Below Proficient			% Far Below Proficient			% Tested		
	School	District	State	School	District	State	School	District	State	School	District	State	School	District	State
All Students	25.30%	34.87%	30.49%	40.32%	44.25%	44.50%	30.43%	18.78%	22.32%	3.95%	2.10%	2.69%	97.68%	98.11%	97.96%
AF AM	*	20.71%	20.51%	30.00%	46.71%	48.68%	40.00%	28.71%	27.18%	*	3.88%	3.63%	100.00%	98.15%	97.71%
AKNA/AI	17.65%	17.15%	12.11%	43.14%	45.31%	41.05%	*	33.38%	40.69%	*	4.15%	6.15%	98.08%	96.51%	97.64%
Asian	16.67%	30.17%	28.49%	43.33%	45.92%	45.93%	*	21.33%	23.31%	*	2.58%	2.27%	100.00%	97.56%	97.67%
NH/OPI	*	14.02%	N/A	66.67%	42.89%	N/A	*	39.38%	N/A	*	3.71%	N/A	100.00%	99.18%	N/A
White	36.36%	45.85%	40.04%	38.96%	41.91%	44.71%	*	11.26%	13.97%	*	0.99%	1.28%	96.25%	98.66%	98.22%
Hispanic	25.00%	27.33%	27.00%	38.89%	47.25%	48.36%	*	22.54%	22.23%	*	2.88%	2.41%	100.00%	97.07%	97.36%
ME	25.58%	28.51%	29.14%	37.21%	47.68%	47.29%	30.23%	21.31%	21.37%	6.98%	2.51%	2.20%	95.56%	98.15%	97.96%
EDS	17.31%	18.92%	17.53%	39.10%	47.34%	45.15%	39.10%	29.95%	32.95%	4.49%	3.79%	4.37%	98.11%	97.50%	96.53%
Not EDS	38.14%	45.99%	40.21%	42.27%	42.10%	44.01%	16.49%	10.99%	14.35%	3.09%	0.92%	1.44%	97.00%	98.54%	99.06%
SWD	*	7.09%	6.94%	*	38.82%	37.02%	60.00%	45.96%	47.34%	12.50%	8.12%	8.69%	86.96%	94.28%	93.97%
Non-SWD	29.58%	39.86%	34.45%	43.19%	45.23%	45.76%	24.88%	13.89%	18.11%	2.35%	1.02%	1.69%	100.00%	98.83%	98.66%
LEP	*	4.71%	3.14%	*	37.05%	30.66%	69.23%	50.57%	56.76%	11.54%	7.67%	9.44%	96.30%	94.25%	96.18%
Not LEP	27.75%	37.55%	34.08%	43.17%	44.89%	46.32%	25.99%	15.96%	17.79%	3.08%	1.60%	1.81%	97.84%	98.47%	98.20%
Migrant	*	21.44%	14.20%	54.55%	48.58%	42.55%	45.45%	26.63%	38.57%	*	3.35%	4.68%	100.00%	98.51%	98.58%
Not Migrant	26.45%	35.46%	31.63%	39.67%	44.06%	44.64%	29.75%	18.43%	21.18%	4.13%	2.04%	2.55%	97.58%	98.09%	97.92%
Female	30.08%	42.63%	37.48%	44.72%	42.50%	43.42%	22.76%	13.62%	17.40%	2.44%	1.26%	1.70%	97.62%	98.32%	98.22%
Male	20.77%	27.36%	23.87%	36.15%	45.96%	45.52%	37.69%	23.78%	26.98%	5.38%	2.91%	3.63%	97.74%	97.90%	97.72%

* Results cannot be published without releasing personally identifiable information based upon the EED reporting protocol

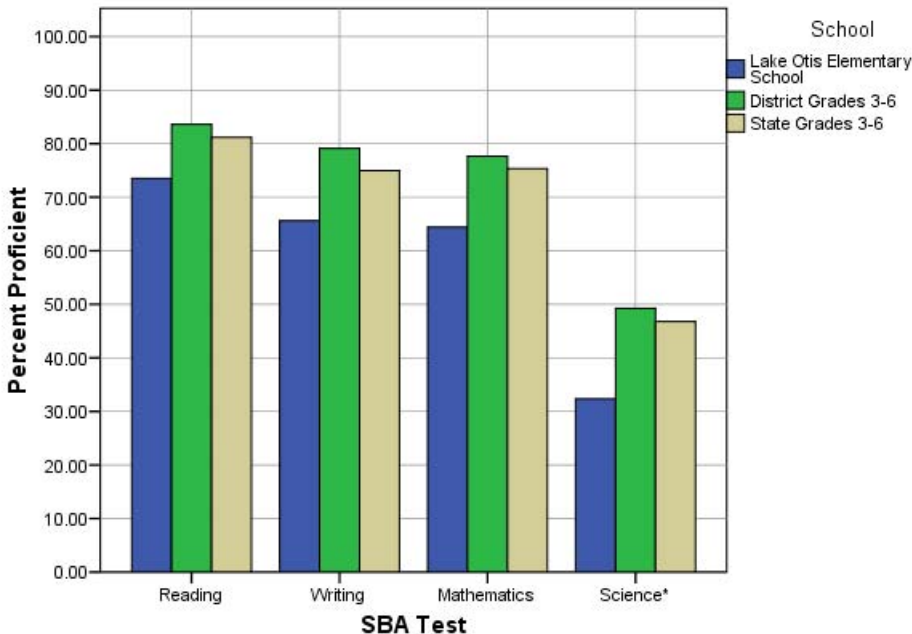
Mathematics: SBA Results Compared for Lake Otis Elementary School, District and State Grades 3 Through 6															
	% Advanced Proficient			% Proficient			% Below Proficient			% Far Below Proficient			% Tested		
	School	District	State	School	District	State	School	District	State	School	District	State	School	District	State
All Students	26.09%	39.81%	36.08%	38.34%	37.84%	39.26%	18.97%	12.46%	13.78%	16.60%	9.88%	10.88%	97.68%	98.52%	98.12%
AF AM	30.00%	19.48%	22.09%	*	40.14%	41.60%	*	20.19%	18.61%	40.00%	20.19%	17.70%	100.00%	98.38%	97.78%
AKNA/AI	17.65%	23.20%	18.26%	41.18%	39.51%	39.14%	29.41%	19.22%	21.79%	11.76%	18.07%	20.81%	98.08%	96.96%	97.72%
Asian	20.00%	37.02%	34.29%	56.67%	41.20%	41.23%	*	13.76%	14.10%	*	8.03%	10.38%	100.00%	99.27%	98.99%
NH/OPI	*	18.52%	N/A	*	38.07%	N/A	*	20.16%	N/A	*	23.25%	N/A	100.00%	99.39%	N/A
White	36.36%	51.12%	45.75%	33.77%	35.15%	38.35%	14.29%	8.41%	9.81%	15.58%	5.32%	6.09%	96.25%	98.69%	98.17%
Hispanic	25.00%	31.85%	31.11%	30.56%	40.04%	42.19%	19.44%	15.02%	15.10%	25.00%	13.09%	11.60%	100.00%	98.66%	98.47%
ME	20.93%	33.75%	35.45%	44.19%	41.21%	40.61%	13.95%	13.93%	13.30%	20.93%	11.11%	10.64%	95.56%	98.26%	98.00%
EDS	17.31%	24.26%	23.31%	39.74%	41.50%	40.98%	21.79%	17.54%	18.60%	21.15%	16.70%	17.11%	98.11%	98.14%	96.77%
Not EDS	40.21%	50.70%	45.67%	36.08%	35.28%	37.96%	14.43%	8.91%	10.16%	9.28%	5.12%	6.21%	97.00%	98.79%	99.16%
SWD	*	12.52%	12.06%	*	31.53%	32.14%	35.00%	23.68%	23.60%	50.00%	32.27%	32.20%	86.96%	94.19%	93.99%
Non-SWD	30.52%	44.69%	40.12%	43.19%	38.97%	40.45%	15.96%	10.46%	12.13%	10.33%	5.88%	7.30%	100.00%	99.34%	98.85%
LEP	*	8.22%	6.05%	*	36.74%	34.10%	26.92%	24.50%	27.43%	46.15%	30.54%	32.42%	96.30%	97.95%	97.56%
Not LEP	28.63%	42.73%	40.09%	40.09%	37.94%	39.95%	18.06%	11.35%	11.96%	13.22%	7.98%	8.01%	97.84%	98.57%	98.19%
Migrant	*	30.94%	22.37%	54.55%	43.65%	40.27%	36.36%	14.21%	20.36%	*	11.20%	17.00%	100.00%	98.68%	98.54%
Not Migrant	27.27%	40.21%	37.05%	37.60%	37.58%	39.19%	18.18%	12.38%	13.31%	16.94%	9.83%	10.45%	97.58%	98.51%	98.09%
Female	28.46%	41.01%	36.83%	38.21%	38.32%	39.88%	21.95%	11.59%	13.34%	11.38%	9.09%	9.96%	97.62%	98.71%	98.31%
Male	23.85%	38.66%	35.38%	38.46%	37.38%	38.67%	16.15%	13.30%	14.20%	21.54%	10.66%	11.75%	97.74%	98.34%	97.94%

* Results cannot be published without releasing personally identifiable information based upon the EED reporting protocol

Science: SBA Results Compared for Lake Otis Elementary School, District and State Grade 4															
	% Advanced Proficient			% Proficient			% Below Proficient			% Far Below Proficient			% Tested		
	School	District	State	School	District	State	School	District	State	School	District	State	School	District	State
All Students	13.24%	23.68%	22.1%	19.12%	25.57%	24.7%	35.29%	31.70%	31.3%	32.35%	19.06%	21.9%	97.14%	97.81%	95.35%
AF AM	*	9.18%	8.9%	*	18.84%	23.3%	*	39.13%	38.0%	*	32.85%	29.8%	100.00%	98.57%	94.49%
AKNA/AI	*	6.54%	6.8%	*	21.50%	14.2%	38.46%	42.99%	35.2%	46.15%	28.97%	43.8%	100.00%	96.40%	94.98%
Asian	*	10.18%	13.4%	*	21.40%	19.4%	40.00%	39.30%	37.5%	30.00%	29.12%	29.7%	100.00%	98.28%	97.39%
NH/OPI	*	6.57%	N/A	*	8.03%	N/A	*	34.31%	N/A	*	51.09%	N/A	100.00%	98.56%	N/A
White	*	36.40%	32.3%	*	29.08%	29.9%	35.29%	25.33%	27.3%	35.29%	9.19%	10.5%	89.47%	97.87%	94.97%
Hispanic	*	16.17%	18.2%	*	26.15%	26.0%	30.00%	32.08%	33.9%	30.00%	25.61%	21.9%	100.00%	97.12%	96.39%
ME	28.57%	16.06%	18.5%	*	26.12%	26.8%	42.86%	37.47%	35.9%	*	20.34%	18.7%	100.00%	98.32%	96.90%
EDS	14.00%	8.34%	11.0%	14.00%	22.44%	20.1%	36.00%	38.10%	34.7%	36.00%	31.12%	34.2%	98.04%	97.73%	94.99%
Not EDS	*	35.00%	31.2%	*	27.88%	28.5%	33.33%	26.97%	28.5%	22.22%	10.15%	11.9%	94.74%	97.87%	95.64%
SWD	*	8.38%	7.7%	*	16.38%	15.2%	30.00%	36.57%	36.6%	60.00%	38.67%	40.5%	83.33%	93.25%	91.70%
Non-SWD	15.52%	26.43%	24.7%	20.69%	27.22%	26.4%	36.21%	30.82%	30.4%	27.59%	15.53%	18.5%	100.00%	98.68%	96.04%
LEP	*	2.00%	1.5%	*	5.14%	3.8%	*	34.00%	28.3%	60.00%	58.86%	66.5%	100.00%	96.15%	95.67%
Not LEP	12.70%	26.13%	25.2%	20.63%	27.88%	27.9%	36.51%	31.44%	31.8%	30.16%	14.55%	15.1%	96.92%	98.00%	95.30%
Migrant	*	9.70%	9.0%	*	26.87%	15.3%	*	39.55%	34.3%	*	23.88%	41.4%	100.00%	97.10%	97.32%
Not Migrant	13.64%	24.24%	23.0%	18.18%	25.51%	25.3%	36.36%	31.38%	31.1%	31.82%	18.86%	20.5%	97.06%	97.84%	95.21%
Female	10.26%	22.73%	20.8%	23.08%	25.78%	25.2%	33.33%	33.63%	32.6%	33.33%	17.87%	21.4%	97.50%	98.05%	95.43%
Male	17.24%	24.61%	23.4%	13.79%	25.36%	24.2%	37.93%	29.80%	30.1%	31.03%	20.23%	22.3%	96.67%	97.58%	95.27%

* Results cannot be published without releasing personally identifiable information based upon the EED reporting protocol

2007-08 SBA Results Compared for Lake Otis Elementary School, District and State

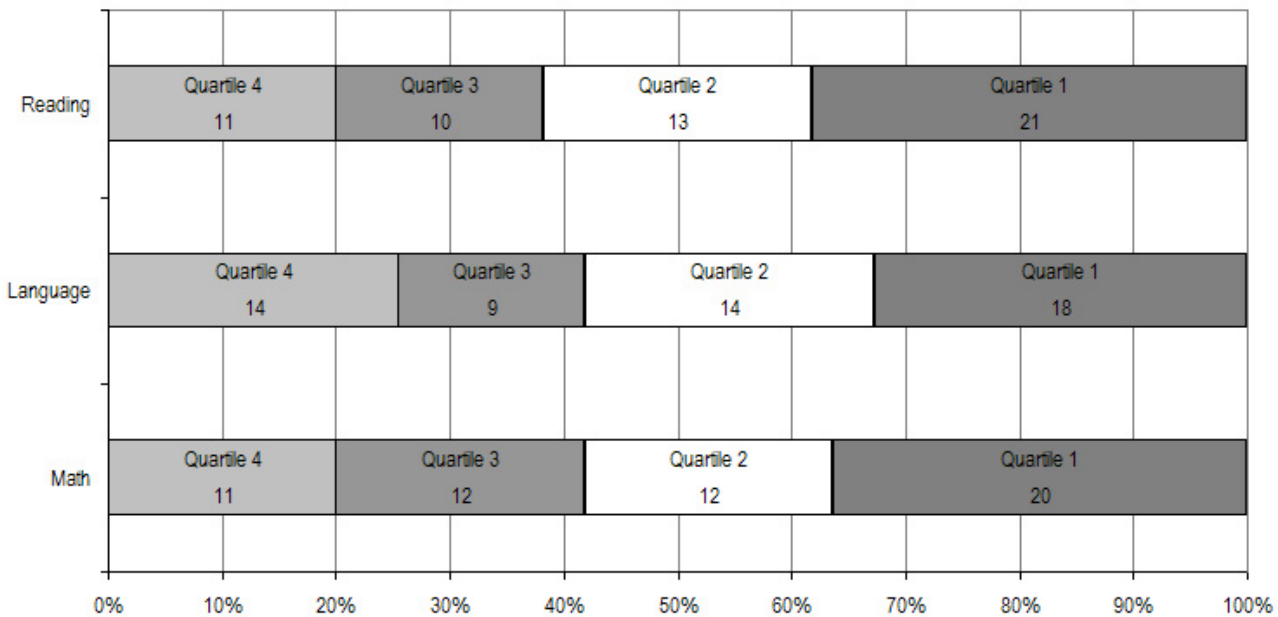


* 2007-08 was the first year Science was administered for grades 4, 8 and 10 on the SBA.

Lake Otis Elementary School TerraNova Grade 5 Percent in Each Quartile								
Reading	Above Average		Average				Below Average	
	4th Quartile (76-99 percentile)		3rd Quartile (51-75 percentile)		2nd Quartile (26-50 percentile)		1st Quartile (1-25 percentile)	
	School	District	School	District	School	District	School	District
07-08	20.00%	25.65%	18.18%	24.08%	23.64%	23.73%	38.18%	26.55%
06-07	22.8%	33.1%	22.8%	26.1%	24.6%	23.6%	29.8%	17.2%
05-06	22.2%	30.4%	24.1%	26.8%	33.3%	24.5%	20.4%	18.3%
04-05	22.9%	29.2%	37.1%	27.6%	22.9%	24.5%	17.1%	18.7%
03-04	34.0%	30.6%	32.1%	26.9%	26.4%	24.2%	7.5%	18.3%
Language								
07-08	25.45%	26.79%	16.36%	27.20%	25.45%	24.12%	32.73%	21.89%
06-07	24.6%	34.7%	22.8%	26.9%	33.3%	21.4%	19.3%	17.0%
05-06	22.2%	34.0%	35.2%	26.5%	24.1%	22.0%	18.5%	17.5%
04-05	32.9%	32.1%	28.6%	28.3%	20.0%	21.2%	18.6%	18.4%
03-04	32.1%	34.1%	32.1%	26.5%	32.1%	21.7%	3.8%	17.7%
Mathematics								
07-08	20.00%	25.45%	21.82%	26.40%	21.82%	24.47%	36.36%	23.68%
06-07	17.2%	29.7%	19.0%	31.6%	32.8%	21.2%	31.0%	17.4%
05-06	9.1%	28.4%	45.5%	31.9%	21.8%	22.3%	23.6%	17.5%
04-05	24.3%	26.9%	35.7%	31.1%	21.4%	22.9%	18.6%	19.1%
03-04	19.2%	28.3%	42.3%	29.3%	21.2%	22.6%	17.3%	19.8%

The double bold line indicates a change from the TerraNova 2nd edition to the TerraNova 3rd edition.

2007-08 TerraNova 3rd Edition Grade 5 Percent and Count of Students in Each Quartile For Lake Otis Elementary School



Climate Survey Results for Lake Otis Elementary School

The Anchorage School District administered the School Climate and Connectedness Surveys in spring 2008 to students in grades 5-12, all school staff and parents/guardians of students in grades K-12. The surveys were done to provide schools with information about perceptions and experiences related to school climate for use in setting school goals and redirecting resources. In the spring of 2008 grades 3 and 4 students were involved in a pilot survey for measuring school climate and connectedness. The results are currently under review by the American Institutes for Research.

Respondents were asked to answer a series of questions that were related to a certain concept. For each item, there were five options from which to choose a response. The answer options ranged from strongly disagree (1) to strongly agree (5).

Student Survey Response Rate – Grades 5-12			
	Lake Otis Elementary School	Overall Elementary Schools	District**
# Surveys Completed	107	5,579	21,629
# Reportable Surveys	99	4,969	18,654
# Students Enrolled*	121	6,331	28,945
Reportable Response Rate	81.82%	78.49%	64.45%

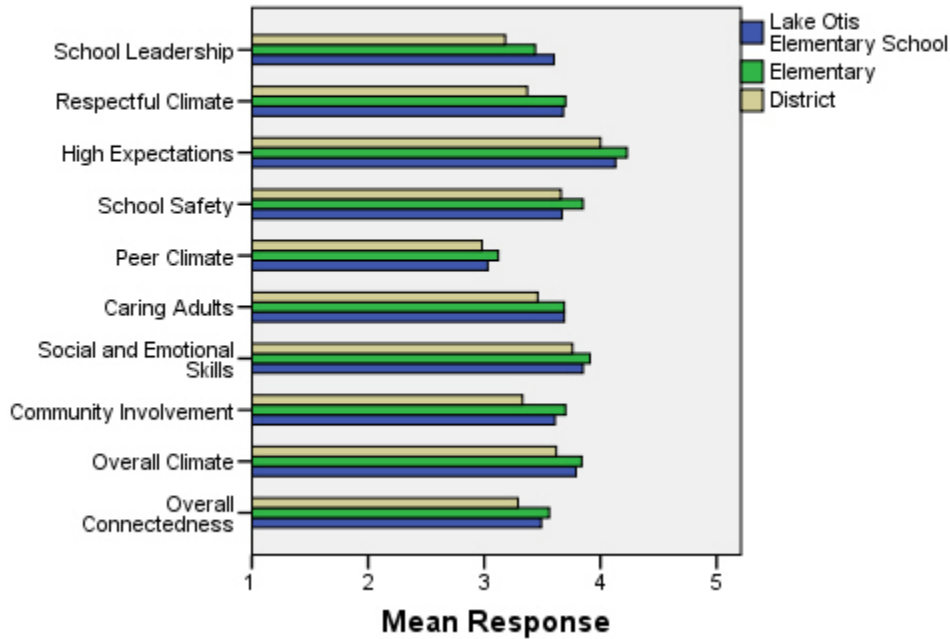
*Number enrolled as of April 1, 2008

**District data does not include KCC responses

Each question in the survey related to a factor or concept, and a score was calculated based on the mean response for the questions related to each factor. The factors measured in the survey were:

- **School Leadership and Student Involvement:** This factor reflects students' feelings about the decision making of school leaders as well as student participation in the school governance. Students selected responses between 1 and 5 where 1 indicates a low level of school leadership and student involvement and 5 indicates a high level of school leadership and student involvement.
- **Respectful Climate:** This factor reflects students' feelings about fairness of rules and respect for students' contributions. Students selected responses between 1 and 5 where 1 indicates a lack of a respectful climate and 5 indicates a highly respectful climate for students.
- **High Expectations:** This factor reflects students' feelings about their own expectations as well as those of adults in their school and community. Students selected responses between 1 and 5 where 1 indicates a lack of high expectations and 5 indicates a high level of high expectations.
- **School Safety:** This factor reflects students' feelings about bullies and gangs at school as well as general crime and violence in the community. Students selected responses between 1 and 5 where 1 indicates a low level of school safety and 5 indicates a high level of school safety.
- **Peer Climate:** This factor reflects students' feelings about how respectful students are to one another and how helpful students are to other students. Students selected responses between 1 and 5 where 1 indicates a more negative peer climate and 5 indicates a very positive peer climate at the school.
- **Caring Adults:** This factor reflects students' feelings about how close they feel to adults in the school. Students selected responses between 1 and 5 where 1 indicates a lack of caring adult relationships and 5 indicates strong caring adult relationships at the school.
- **Social and Emotional Learning:** This factor reflects students' ability to think about the consequences of their actions and to empathize with others. Students selected responses between 1 and 5 where 1 indicates that students at the school perceive themselves as having poorer social and emotional learning, and 5 indicates higher levels of social and emotional learning.
- **Community Involvement:** This factor reflects students' feelings about how supportive and welcoming the school is with parents and the community. Students selected responses between 1 and 5 where 1 indicates a less supportive and welcoming environment and 5 indicates a more supportive and welcoming environment.
- **Overall Climate:** The overall climate score was computed as the mean of three scales: school leadership, high expectations and school safety.
- **Overall Connectedness:** Overall connectedness score was computed as a mean of four scales: respectful climate, peer climate, caring adults and community involvement.

Climate and Connectedness Student Survey - Lake Otis



Student Survey Mean Response by Factors Related to School Climate - Overall District			
	Lake Otis Elementary School	Overall Elementary Schools	District
School Leadership	3.60	3.44	3.18
Respectful Climate	3.68	3.70	3.37
High Expectations	4.13	4.23	4.00
School Safety	3.67	3.85	3.66
Peer Climate	3.03	3.12	2.98
Caring Adults	3.69	3.69	3.46
Social and Emotional Skills	3.85	3.91	3.76
Community Involvement	3.61	3.70	3.33
Overall Climate	3.79	3.84	3.62
Overall Connectedness	3.49	3.56	3.29

Range is from a low of 1 to a high of 5

Students were also asked to answer questions related to school danger. The following table provides the responses for those questions:

Student Survey Results of the School Danger Questions - Percent of Students Responding in Each Category					
	0 Times	1-2 Times	3-6 Times	7-12 Times	> 12 Times
Lake Otis Elementary School					
Under the influence of drugs?	93.81%	6.19%	0.00%	0.00%	0.00%
Under the influence of alcohol?	94.79%	4.17%	1.04%	0.00%	0.00%
Destroy things (vandalism)?	45.36%	26.80%	21.65%	4.12%	2.06%
Get into fights?	13.40%	31.96%	36.08%	9.28%	9.28%
Steal things?	44.33%	30.93%	18.56%	5.15%	1.03%
Threaten or bully?	36.46%	31.25%	14.58%	9.38%	8.33%
Under the influence of inhalants?	67.01%	23.71%	7.22%	1.03%	1.03%
Carry weapons?	85.57%	13.40%	0.00%	0.00%	1.03%
Overall Elementary Schools					
Under the influence of drugs?	91.87%	5.65%	1.22%	0.31%	0.96%
Under the influence of alcohol?	91.42%	6.01%	1.16%	0.51%	0.90%
Destroy things (vandalism)?	46.82%	32.08%	12.45%	3.30%	5.36%
Get into fights?	22.32%	35.75%	22.56%	7.96%	11.41%
Steal things?	49.79%	27.92%	12.01%	4.33%	5.95%
Threaten or bully?	32.34%	28.83%	17.08%	7.78%	13.97%
Under the influence of inhalants?	71.03%	17.07%	6.14%	2.63%	3.12%
Carry weapons?	79.22%	15.35%	3.17%	0.59%	1.68%
District					
Under the influence of drugs?	60.45%	15.05%	9.54%	3.92%	11.04%
Under the influence of alcohol?	63.11%	16.37%	8.90%	4.43%	7.19%
Destroy things (vandalism)?	41.26%	29.47%	15.45%	5.88%	7.94%
Get into fights?	26.40%	35.20%	21.96%	7.11%	9.33%
Steal things?	44.80%	25.68%	13.81%	6.98%	8.74%
Threaten or bully?	32.21%	26.21%	16.68%	9.27%	15.63%
Under the influence of inhalants?	72.79%	14.21%	5.66%	2.48%	4.87%
Carry weapons?	69.45%	19.15%	5.34%	2.01%	4.06%

Student Survey Results of the Mean Factor Score by Ethnicity (Self-Reported)							
	AKNA/AI	AF AM	Hispanic	Asian/NH	White	Other	Multi-Ethnic
Lake Otis Elementary School							
School Leadership	3.65	3.17	3.78	3.76	3.67	3.30	3.41
Respectful Climate	3.67	3.42	3.65	3.58	3.93	3.75	3.65
High Expectations	3.77	4.29	4.20	4.26	4.42	3.71	4.28
School Safety	3.65	3.93	3.80	3.24	3.84	4.70	3.56
Peer Climate	3.01	2.86	3.13	3.14	3.15	3.20	2.79
Caring Adults	3.55	3.83	3.70	3.67	3.73	4.00	3.81
Social and Emotional Skills	3.79	3.52	3.91	4.07	3.86	3.60	3.87
Community Involvement	3.54	3.79	3.57	3.71	3.66	3.64	3.54
Overall Climate	3.69	3.60	3.86	3.74	3.99	3.90	3.78
Overall Connectedness	3.45	3.49	3.34	3.52	3.73	3.65	3.33
Overall Elementary Schools							
School Leadership	3.56	3.50	3.52	3.55	3.37	3.44	3.42
Respectful Climate	3.75	3.60	3.66	3.72	3.71	3.69	3.63
High Expectations	4.12	4.23	4.23	4.22	4.26	4.19	4.25
School Safety	3.75	3.63	3.73	3.68	4.03	3.66	3.79
Peer Climate	3.12	2.94	3.12	3.18	3.16	3.05	3.05
Caring Adults	3.64	3.73	3.64	3.59	3.74	3.60	3.76
Social and Emotional Skills	3.86	3.84	3.91	3.95	3.93	3.90	3.89
Community Involvement	3.66	3.60	3.67	3.66	3.75	3.66	3.70
Overall Climate	3.81	3.79	3.84	3.81	3.89	3.76	3.82
Overall Connectedness	3.56	3.49	3.51	3.53	3.60	3.49	3.56
District							
School Leadership	3.33	3.14	3.19	3.28	3.14	3.17	3.15
Respectful Climate	3.48	3.18	3.32	3.39	3.39	3.37	3.33
High Expectations	3.98	3.94	3.96	4.02	4.02	4.00	4.01
School Safety	3.60	3.48	3.55	3.47	3.78	3.51	3.62
Peer Climate	3.01	2.85	2.94	3.05	3.00	2.92	2.93
Caring Adults	3.49	3.43	3.37	3.33	3.51	3.42	3.46
Social and Emotional Skills	3.73	3.66	3.73	3.81	3.78	3.75	3.74
Community Involvement	3.37	3.22	3.31	3.29	3.34	3.34	3.31
Overall Climate	3.64	3.52	3.57	3.59	3.65	3.56	3.60
Overall Connectedness	3.33	3.17	3.24	3.26	3.31	3.26	3.27

Staff Survey Response Rate			
	Lake Otis Elementary School	Overall Elementary Schools	District**
# Surveys Completed	32	1,634	2,980
# Reportable Surveys	32	1,628	2,968
# Staff Members*	55	2,967	5,549
Reportable Response Rate	58.18%	54.87%	53.49%

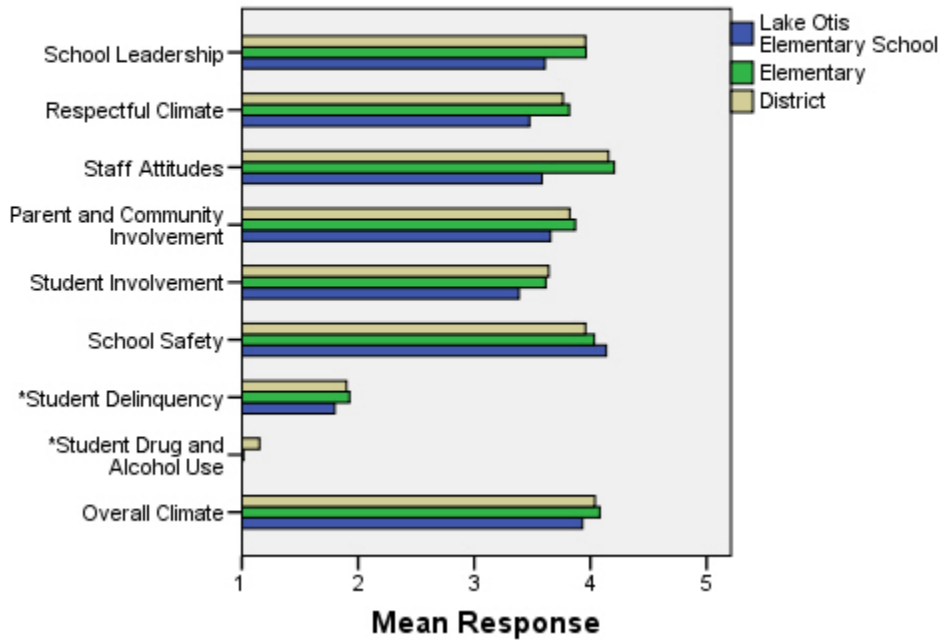
*Number staff as of April 1, 2008

**Includes KCC responses

Each question in the survey related to a factor or concept, and a score was calculated based on the mean response for the questions related to each factor. The factors were:

- **School Leadership:** This factor reflects staff members' feelings about the decision making of school leaders as well as the fairness of school rules. Staff members selected responses between 1 and 5 where 1 indicates a low level of school leadership and 5 indicates a high level of school leadership.
- **Respectful Climate:** This factor reflects staff members' feelings about how students treat each other and how well students and staff members treat one another. Staff members selected responses between 1 and 5 where 1 indicates a low level of respect and 5 indicates a high level.
- **Staff Attitudes:** This scale reflects staff members' feelings about the competence of teachers as well as how positive their attitudes are towards their jobs. Staff members selected responses between 1 and 5 where 1 indicates more negative staff attitudes and 5 indicates highly positive staff attitudes.
- **Parent and Community Involvement:** This factor reflects staff members' feelings about how accessible the school is for parents as well as how connected adults in the community are to the school. Staff members selected responses between 1 and 5 where 1 indicates a low level of parent and community involvement and 5 indicates a high level of parent and community involvement.
- **Student Involvement:** This factor reflects staff members' feeling about how involved students are in the decision making process. Staff members selected responses between 1 and 5 where 1 indicates a low level of student involvement and 5 indicates a high level of student involvement.
- **School Safety:** This factor reflects staff members' feelings about the impact of gangs and bullies as well as general crime and violence in the community. Staff members selected responses between 1 and 5 where 1 indicates a low level school safety and 5 indicates a high level of school safety.
- **Student Delinquency:** This factor uses staff members' reports of observing students getting into fights, stealing and bullying. The student delinquency and student drug and alcohol use scales differ from the other factors since the higher the score is the more negative the response. Staff members selected responses between 1 and 5 where 1 indicates a low level of student delinquency and 5 indicates a high level of student delinquency.
- **Student Drug and Alcohol Use:** This factor uses staff members' reports of observing students under the influence of drugs or alcohol. The student delinquency and student drug and alcohol use scales differ from the other factors since the higher the score is the more negative the response. Staff members selected responses between 1 and 5 where 1 indicates a low level of student drug and alcohol use and 5 indicates a high level of student drug and alcohol use.
- **Overall Climate:** Computed as the mean of 8 scales: school leadership, respectful climate, staff attitudes, parent and community involvement, student involvement, school safety, student delinquency, and drug and alcohol use scores.

Climate and Connectedness Staff Survey - Lake Otis



Staff Survey Mean Response by Factors Related to School Climate - Overall District			
	Lake Otis Elementary School	Overall Elementary Schools	District
School Leadership	3.61	3.96	3.96
Respectful Climate	3.48	3.82	3.76
Staff Attitudes	3.58	4.21	4.16
Parent & Community Involvement	3.66	3.87	3.82
Student Involvement	3.38	3.61	3.64
School Safety	4.14	4.03	3.96
Student Delinquency*	1.80	1.93	1.90
Student Drug & Alcohol Use*	1.00	1.01	1.15
Overall Climate	3.93	4.08	4.04

Range is from a low of 1 to a high of 5

*Student Drug and Alcohol Use and Student Delinquency factor scale scores differ from other factors since the higher the score is the more negative the response.

Staff members were also asked to answer questions related to school danger. The following table provides the responses for those questions:

Staff Survey Results of the School Danger Questions - Percent of Staff Responding in Each Category					
	0 Times	1-2 Times	3-6 Times	7-12 Times	> 12 Times
Lake Otis Elementary School					
Under the influence of drugs?	100.00%	0.00%	0.00%	0.00%	0.00%
Under the influence of alcohol?	100.00%	0.00%	0.00%	0.00%	0.00%
Destroy things (vandalism)?	50.00%	30.77%	11.54%	7.69%	0.00%
Get into fights?	32.00%	32.00%	32.00%	4.00%	0.00%
Steal things?	38.46%	46.15%	15.38%	0.00%	0.00%
Threaten or bully?	36.00%	16.00%	36.00%	4.00%	8.00%
Under the influence of inhalants?	100.00%	0.00%	0.00%	0.00%	0.00%
Carry weapons?	88.00%	12.00%	0.00%	0.00%	0.00%
Overall Elementary Schools					
Under the influence of drugs?	98.39%	1.47%	0.15%	0.00%	0.00%
Under the influence of alcohol?	98.97%	0.96%	0.07%	0.00%	0.00%
Destroy things (vandalism)?	40.04%	37.02%	16.00%	4.13%	2.80%
Get into fights?	32.16%	38.18%	19.24%	5.58%	4.85%
Steal things?	38.65%	40.63%	13.96%	4.56%	2.20%
Threaten or bully?	20.00%	36.03%	23.38%	10.59%	10.00%
Under the influence of inhalants?	98.90%	0.95%	0.15%	0.00%	0.00%
Carry weapons?	89.94%	8.96%	1.03%	0.07%	0.00%
District					
Under the influence of drugs?	82.61%	11.54%	4.11%	1.19%	0.55%
Under the influence of alcohol?	86.69%	10.21%	2.34%	0.60%	0.16%
Destroy things (vandalism)?	38.03%	36.81%	16.05%	5.07%	4.04%
Get into fights?	35.38%	38.78%	16.46%	4.83%	4.55%
Steal things?	41.82%	37.07%	14.02%	4.28%	2.81%
Threaten or bully?	22.88%	37.15%	21.97%	8.96%	9.04%
Under the influence of inhalants?	97.27%	2.42%	0.24%	0.04%	0.04%
Carry weapons?	88.47%	10.26%	1.11%	0.08%	0.08%

Staff Survey Results of the Mean Factor Score by Ethnicity (Self-Reported)						
	AKNA/AI	AF AM/Black	Hispanic	Asian/NH	White	Multi-Ethnic
Lake Otis Elementary School						
School Leadership	3.13	***	4.63	4.63	3.47	3.50
Respectful Climate	3.20	***	4.20	3.60	3.43	4.00
Staff Attitudes	3.00	***	4.80	***	3.49	3.40
Parent and Community Involvement	2.86	***	4.86	4.29	3.62	3.57
Student Involvement	3.33	***	3.67	4.00	3.38	3.33
School Safety	4.00	***	4.40	***	4.10	4.60
* Student Delinquency	1.40	***	1.00	1.60	1.91	1.00
* Student Drug and Alcohol Use	1.00	***	1.00	1.00	1.00	1.00
Overall Climate	3.64	***	4.57	***	3.88	4.05
Overall Elementary Schools						
School Leadership	4.10	4.13	4.11	4.17	3.96	4.06
Respectful Climate	3.74	3.99	3.87	4.06	3.81	3.88
Staff Attitudes	4.15	4.23	4.30	4.24	4.21	4.31
Parent and Community Involvement	3.86	4.06	3.97	3.99	3.87	3.91
Student Involvement	3.78	3.66	3.73	3.81	3.61	3.71
School Safety	3.92	4.10	4.16	3.93	4.04	4.05
* Student Delinquency	1.79	1.61	1.65	1.54	1.97	2.13
* Student Drug and Alcohol Use	1.00	1.00	1.01	1.03	1.01	1.01
Overall Climate	4.08	4.18	4.23	4.24	4.07	4.13
District						
School Leadership	3.99	3.99	4.13	4.15	3.96	4.06
Respectful Climate	3.66	3.83	3.84	3.96	3.76	3.84
Staff Attitudes	4.06	4.11	4.27	4.22	4.16	4.29
Parent and Community Involvement	3.75	3.91	3.94	3.93	3.82	3.85
Student Involvement	3.62	3.67	3.85	3.88	3.64	3.72
School Safety	3.82	3.94	4.06	3.94	3.97	3.94
* Student Delinquency	1.88	1.90	1.67	1.61	1.91	2.05
* Student Drug and Alcohol Use	1.12	1.26	1.03	1.16	1.15	1.13
Overall Climate	3.96	4.04	4.20	4.18	4.04	4.09

*Student Drug and Alcohol Use and Student Delinquency factor scale scores differ from other factors since the higher the score is the more negative the response.

**Staff survey results do not include an 'Other' ethnicity category since staff in that category all chose at least one other ethnicity in addition to 'Other' and were included in the 'Multi-Ethnic' category as a result.

***Results can not be calculated because of missing responses

The response rate is not high enough to provide statistically reliable results for Lake Otis Elementary School's Parent/Guardian Survey Results.