

North Star Elementary School Overview

Statement of Program

A richly diverse student population attends North Star’s preschool-sixth grade program. Students are supported by highly qualified teachers and paraprofessionals, and benefit from multiple special programs, including 21st Century Learning Center after-school tutoring, Indian Education, a neighborhood preschool and a Child in Transition/Homeless preschool, bilingual tutors and a fully-staffed bilingual learning lab. In addition, North Star serves students who experience autism in a K-2 class and preschool. A full-time counselor and nurse are also on staff.

North Star is a Title I school that qualifies all children for free breakfast and lunch. The Title I model ensures that each classroom has additional support to meet the needs of students. At North Star we strive to be a diverse and caring community of lifelong learners, supporting each other on our journeys to realize our personal best.

From the School Report Card

School Goals

Goal	Level of Achievement
The number of students “on track” for proficiency in grades K-2 will increase from 46 to 56 percent as measured by district assessments.	Attained
The number of students rated proficient on the state language arts assessment will increase from 65 to 75 percent.	Partially Attained
The number of students rated proficient on the state math assessment will increase from 63.6 to 74 percent.	Not Attained

From the School Report Card

Budget*

2006-07 Actual Expenditures	\$2,126,396
2007-08 Revised Budgeted Amount	\$2,820,645
2008-09 Proposed Budget	\$2,987,690

*Dollars budgeted or expended are general fund only
From IFAS

North Star Elementary School Characteristics			
	School	District	Source of Information
Membership	470	48,858	Fall OASIS
Capacity	83.14%	N/A	2008-18 ASD Capital Improvement Plan
Attendance Rate	91.98%	92.83%	NCLB Summer Data Collection
Retention Rate K-8	2.25%	0.60%	SMS and NCLB Summer Data Collection
Transiency Rate	44.55%	26.07%	NCLB Summer Data Collection
Economically Disadvantaged	462	17,717	Fall OASIS
Average Weekly Volunteer Hours	10	4,660	Department of Education Report Card Report
Students Taking the Alternate Assessment	2	228	SMS
Change in Enrollment	9.56%	-0.76%	Fall Oasis

Teacher Qualification				
Number of Teachers	Percent Fully Licensed	Percent With Advanced Degrees	Number Nationally Board Certified	Percent of Classes Taught by "Highly Qualified Teachers"
37	100.00%	35.13%	0	93.54%

North Star Elementary School Business Partnerships
Lowe's

From the School Report Card

Ethnicity Report							
African-American/Black	Alaska Native/American Indian	Asian	Native Hawaiian/Other Pacific Islander	White	Hispanic	Multi-Ethnic	Total
37	67	54	32	79	96	105	470

From Fall Oasis

Full Academic Year		
Students Enrolled	Students Enrolled for FAY	Percent FAY
472	389	82.42%

From participation file (Grades 3-10)

**North Star Elementary School
2007-08 Adequate Yearly Progress
Status Report**

Does Not Meet AYP
Level 4

AMO For Language Arts: 77.18%
AMO For Mathematics: 66.09%

Group	Participation Rate				"FAY" (D) Tested & Enrolled "FAY"	Language Arts Performance				Mathematics Performance			
	(A) Number Enrolled	(B) Number Tested	Participation Rate (%)	(C) Participation Rate Met		(E) Proficient on LA	(F) Percent Proficient on LA	(G) LA Target	(H) Met AMO for LA	(I) Proficient on Mathematics	(J) Percent Proficient in Mathematics	(K) Mathematics Target	(L) Met AMO for Mathematics
All Students	241	241	100%	Yes	203	127	62.6%	70.3%	No	112	55.2%	58.3%	No
AF AM	24	24	100%	Yes	N/A	N/A	N/A	N/A	N/A	N/A	N/A	N/A	N/A
AKNA/AI	32	32	100%	Yes	28	13	46.4%	58.7%	No	10	35.7%	45.2%	No
Asian/NH/OPI	54	54	100%	Yes	44	26	59.1%	62.4%	No	23	52.3%	49.5%	Yes
White	34	34	100%	Yes	30	22	73.3%	59.3%	Yes	20	66.7%	46%	Yes
Hispanic	47	47	100%	Yes	42	25	59.5%	62.1%	Yes-SH	22	52.4%	49.1%	Yes
ME	50	50	100%	Yes	45	32	71.1%	62.6%	Yes	30	66.7%	49.6%	Yes
EDS	241	241	100%	Yes	203	127	62.6%	70.3%	No	112	55.2%	58.3%	No
SWD	54	54	100%	Yes	49	15	30.6%	63.2%	Yes-SH	15	30.6%	50.3%	No
LEP	87	87	100%	Yes	70	41	58.6%	65.5%	No	34	48.6%	52.9%	No

Attendance Rate: Met

92.0% (Threshold is 85%)

N/A is used to indicate:

- (1) Subgroups with 20 or fewer students enrolled on the first day of testing shall not be included in participation rate calculation.
- (2) Subgroups with 25 or fewer students enrolled for the "full academic year" shall not have the performance score computed.

* For the groups where the number enrolled is less than or equal to 40, participation is met when no more than two miss the test. Groups can also meet this target using the average of the past two or three years.

** When a group achieves a "Yes" without meeting the listed target, it has done so using either the 99% confidence interval or Safe Harbor.

*** The results cannot be published without releasing personally identifiable information based upon the EED reporting protocol.

This document was prepared by the ASD Assessment and Evaluation Department.

7/10/2008

North Star Elementary School
2007-08 Adequate Yearly Progress
Growth Report

The AYP growth reports are generated by the Alaska State Department of Education and Early Development. The reports can be found online at: http://www.asdk12.org/depts/assess_eval/AYP/State_AS_D_AYG_0708.pdf

SBA Proficiency Comparison by Grade for North Star Elementary School																
	Reading Percent Proficient				Writing Percent Proficient				Mathematics Percent Proficient				Science* Percent Proficient			
	04-05	05-06	06-07	07-08	04-05	05-06	06-07	07-08	04-05	05-06	06-07	07-08	04-05	05-06	06-07	07-08
All Students	61.79%	69.59%	66.35%	67.51%	60.66%	63.76%	64.42%	58.05%	48.64%	54.55%	63.68%	51.88%	N/A	N/A	N/A	15.00%
Grade 3	53.97%	74.55%	55.36%	56.14%	60.32%	66.07%	55.36%	43.86%	50.77%	71.93%	60.71%	43.10%	N/A	N/A	N/A	N/A
Grade 4	65.31%	74.14%	75.00%	70.00%	56.25%	68.97%	73.33%	57.63%	49.02%	52.54%	64.52%	43.33%	N/A	N/A	N/A	15.00%
Grade 5	58.00%	70.83%	69.81%	66.13%	60.00%	62.50%	64.15%	58.06%	41.18%	43.75%	66.67%	55.56%	N/A	N/A	N/A	N/A
Grade 6	72.00%	58.93%	64.10%	77.59%	66.00%	57.14%	64.10%	72.41%	52.83%	48.21%	62.50%	65.52%	N/A	N/A	N/A	N/A

* 2007-08 was the first year Science was administered for grades 4, 8 and 10 on the SBA.

SBA Proficient & Not Proficient by NCLB Groups for North Star Elementary School								
	Reading		Writing		Mathematics		Science**	
	Percent Proficient	Percent Not Proficient	Percent Proficient	Percent Not Proficient	Percent Proficient	Percent Not Proficient	Percent Proficient	Percent Not Proficient
All Students	67.51%	32.49%	58.05%	41.95%	51.88%	48.12%	15.00%	85.00%
AF AM	83.33%	16.67%	62.50%	37.50%	41.67%	58.33%	60% or fewer	40% or more
AKNA/AI	45.16%	54.84%	41.94%	58.06%	35.48%	64.52%	60% or fewer	40% or more
Asian	83.33%	16.67%	62.07%	37.93%	63.33%	36.67%	60% or fewer	40% or more
NH/OPI	54.17%	45.83%	41.67%	58.33%	29.17%	70.83%	80% or fewer	20% or more
White	78.79%	21.21%	66.67%	33.33%	66.67%	33.33%	27.27%	72.73%
Hispanic	53.33%	46.67%	55.56%	44.44%	46.81%	53.19%	80% or fewer	20% or more
ME	76.00%	24.00%	68.00%	32.00%	66.00%	34.00%	30.00%	70.00%
EDS	67.51%	32.49%	58.05%	41.95%	51.88%	48.12%	15.00%	85.00%
Non-EDS	*	*	*	*	*	*	*	*
SWD	23.81%	76.19%	21.43%	78.57%	23.81%	76.19%	75% or fewer	25% or more
Non-SWD	76.92%	23.08%	65.98%	34.02%	57.87%	42.13%	15.69%	84.31%
LEP	39.13%	60.87%	30.43%	69.57%	20.83%	79.17%	80% or fewer	20% or more
Not LEP	74.35%	25.65%	64.74%	35.26%	59.69%	40.31%	17.78%	82.22%
Migrant	80% or more	20% or fewer	70.00%	30.00%	70.00%	30.00%	*	*
Not Migrant	66.96%	33.04%	57.52%	42.48%	51.09%	48.91%	15.00%	85.00%
Female	78.76%	21.24%	72.32%	27.68%	59.65%	40.35%	13.79%	86.21%
Male	57.26%	42.74%	45.16%	54.84%	44.80%	55.20%	16.13%	83.87%

* Results cannot be published without releasing personally identifiable information based upon the EED reporting protocol

** 2007-08 was the first year Science was administered for grades 4, 8 and 10 on the SBA.

SBA Mean Scale Score Comparison by NCLB Groups for North Star Elementary School								
	Reading		Writing		Mathematics		Science***	
	06-07	07-08	06-07	07-08	06-07	07-08	06-07	07-08
All Students	339.58	338.39	328.54	317.43	322.08	309.66	N/A	246.93
AF AM	371.74	352.88	352.68	322.79	335.37	305.00	N/A	218.71
AKNA/AI	322.05	303.35	314.98	281.23	307.43	284.74	N/A	241.40
Asian**	347.62**	351.50	338.74**	338.10	338.80**	332.37	N/A	289.71
NH/OPI**	N/A	320.04	N/A	298.63	N/A	275.92	N/A	212.50
White	348.69	355.94	337.83	336.52	329.07	333.94	N/A	274.55
Hispanic	333.97	336.49	320.23	319.98	312.31	301.79	N/A	232.80
ME	338.48	344.24	323.24	319.44	325.30	321.28	N/A	257.70
EDS	339.58	338.39	328.54	317.43	322.08	309.66	N/A	246.93
Non-EDS	*	*	*	*	*	*	N/A	*
SWD	274.55	277.31	274.03	262.19	276.15	259.57	N/A	240.78
Non-SWD	351.85	351.55	338.82	329.39	330.54	320.34	N/A	248.02
LEP	328.57	293.52	312.85	271.76	312.48	261.73	N/A	216.27
Not LEP	345.66	349.20	337.20	328.48	327.55	321.70	N/A	257.16
Migrant	392.56	365.90	363.22	343.90	353.67	333.90	N/A	*
Not Migrant	337.19	337.18	326.97	316.26	320.67	308.60	N/A	246.93
Female	353.78	355.22	346.50	341.06	327.67	319.69	N/A	259.10
Male	324.82	323.06	309.87	296.08	316.37	300.50	N/A	235.55

* Results cannot be published without releasing personally identifiable information based upon the EED reporting protocol

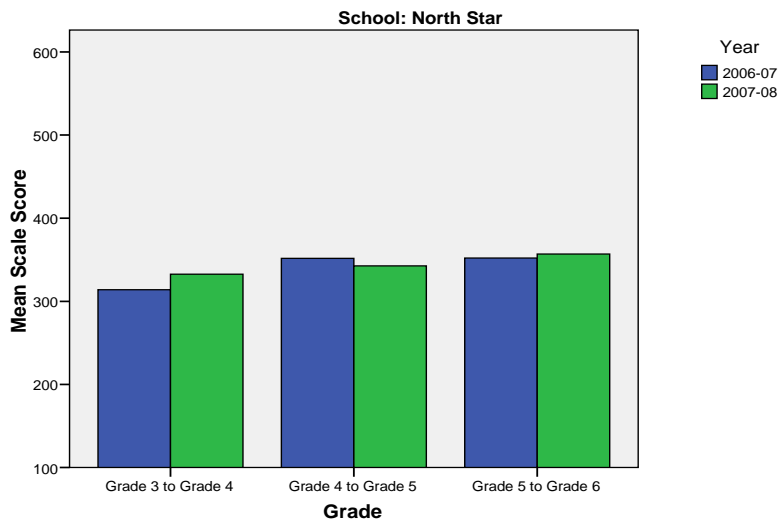
** Prior to 2007-08 the Asian category includes Native Hawaiian/Other Pacific Islander. In 2007-08 Native Hawaiian/Other Pacific Islander is a separate ethnic category.

*** 2007-08 was the first year Science was administered for grades 4, 8 and 10 on the SBA.

North Star Elementary School SBA Change Average Scale Score by NCLB Groups: Reading									
	Average Scale Score of Students Tested in District Both Years			Average Scale Score of Students Tested in District Both Years			Average Scale Score of Students Tested in District Both Years		
	Grade 3 in 06-07	Grade 4 in 07-08	Difference	Grade 4-in 06-07	Grade 5 in 07-08	Difference	Grade 5-in 06-07	Grade 6 in 07-08	Difference
All Students	314.04	332.67	18.63	351.70	342.59	-9.11	352.02	356.79	4.77
AF AM	325.20	352.40	27.20	383.60	344.60	-39.00	*	*	*
AKNA/AI	*	*	*	310.90	289.60	-21.30	*	*	*
Asian	376.20	393.40	17.20	357.00	354.00	-3.00	325.80	289.60	-36.20
NH/OPI	291.00	313.29	22.29	*	*	*	*	*	*
White	335.89	348.56	12.67	380.57	374.00	-6.57	350.63	365.13	14.50
Hispanic	284.10	301.10	17.00	350.44	342.78	-7.67	364.07	368.57	4.50
ME	300.88	330.38	29.50	351.93	353.14	1.21	348.36	354.55	6.18
EDS	314.04	332.67	18.63	351.70	342.59	-9.11	352.02	356.79	4.77
Non-EDS	*	*	*	*	*	*	*	*	*
SWD	271.22	273.22	2.00	272.83	286.17	13.33	278.38	281.25	2.88
Non-SWD	323.92	346.38	22.46	361.56	349.65	-11.92	366.75	371.90	5.15
LEP	276.33	288.00	11.67	257.83	263.33	5.50	304.17	295.17	-9.00
Not LEP	326.61	347.56	20.94	363.44	352.50	-10.94	358.86	365.60	6.74
Migrant	*	*	*	*	*	*	*	*	*
Not Migrant	314.04	332.67	18.63	348.74	339.70	-9.04	349.39	357.18	7.80
Female	326.29	348.62	22.33	389.26	370.15	-19.11	355.44	358.88	3.44
Male	304.52	320.26	15.74	314.15	315.04	0.89	348.30	354.52	6.22

* Results cannot be published without releasing personally identifiable information based upon the EED reporting protocol

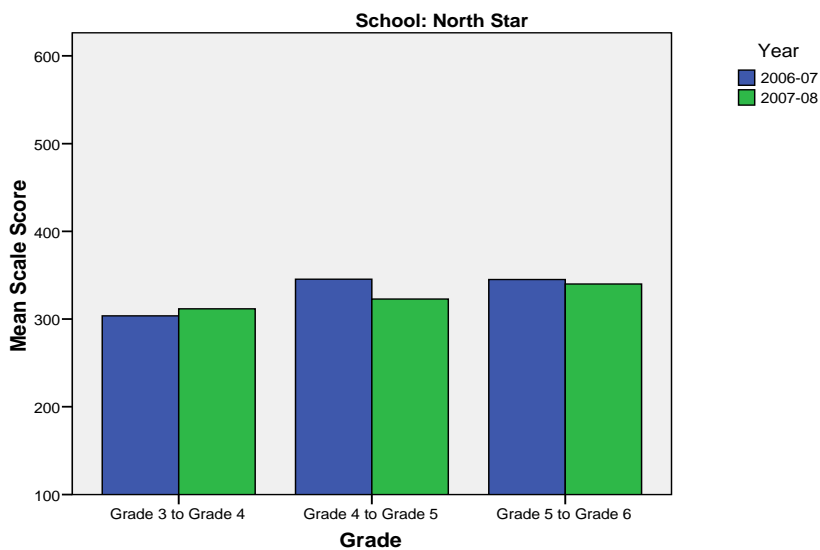
Change in Mean Scale Score in SBA Reading by Grade Between 2006-07 and 2007-08



North Star Elementary School SBA Change Average Scale Score by NCLB Groups: Writing									
	Average Scale Score of Students Tested in District Both Years			Average Scale Score of Students Tested in District Both Years			Average Scale Score of Students Tested in District Both Years		
	Grade 3 in 06-07	Grade 4 in 07-08	Difference	Grade 4- in 06-07	Grade 5 in 07-08	Difference	Grade 5- in 06-07	Grade 6 in 07-08	Difference
All Students	303.64	311.66	8.02	345.52	322.80	-22.72	345.04	339.98	-5.06
AF AM	321.40	310.00	-11.40	360.40	338.80	-21.60	*	*	*
AKNA/AI	*	*	*	304.70	281.50	-23.20	*	*	*
Asian	*	*	*	353.83	339.67	-14.17	288.60	279.40	-9.20
NH/OPI	273.57	287.43	13.86	*	*	*	*	*	*
White	325.11	310.89	-14.22	373.57	351.29	-22.29	320.88	360.75	39.88
Hispanic	258.30	285.00	26.70	334.00	328.44	-5.56	364.29	348.43	-15.86
ME	301.63	325.50	23.88	353.14	315.29	-37.86	355.09	351.09	-4.00
EDS	303.64	311.66	8.02	345.52	322.80	-22.72	345.04	339.98	-5.06
Non-EDS	*	*	*	*	*	*	*	*	*
SWD	270.67	279.00	8.33	277.67	267.50	-10.17	287.38	280.75	-6.63
Non-SWD	311.45	319.39	7.95	354.00	329.71	-24.29	356.58	351.83	-4.75
LEP	248.25	263.00	14.75	261.17	246.67	-14.50	264.83	270.83	6.00
Not LEP	322.63	328.34	5.71	356.06	332.31	-23.75	356.50	349.86	-6.64
Migrant	*	*	*	*	*	*	*	*	*
Not Migrant	303.64	311.66	8.02	343.58	320.38	-23.21	343.75	339.41	-4.34
Female	323.45	337.85	14.40	385.67	350.56	-35.11	356.04	349.32	-6.72
Male	288.96	292.26	3.30	305.37	295.04	-10.33	333.09	329.83	-3.26

* Results cannot be published without releasing personally identifiable information based upon the EED reporting protocol

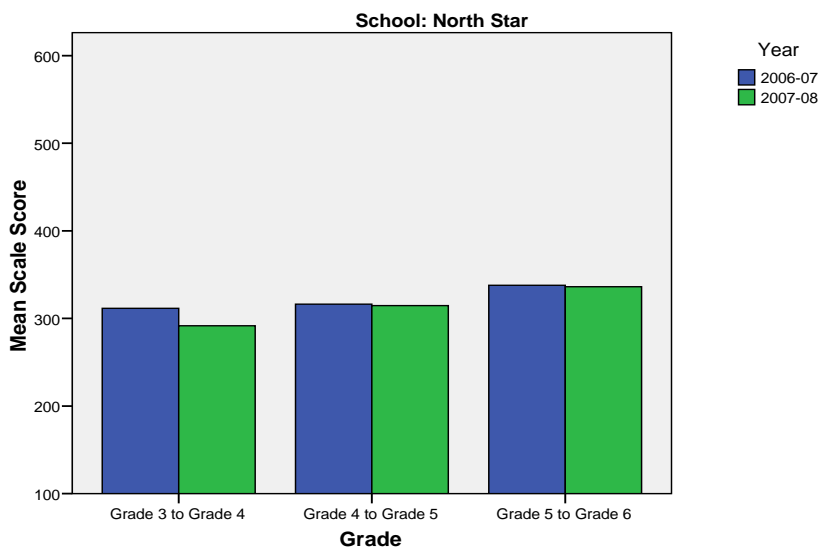
Change in Mean Scale Score in SBA Writing by Grade between 2006-07 and 2007-08



North Star Elementary School SBA Change Average Scale Score by NCLB Groups: Mathematics									
	Average Scale Score of Students Tested in District Both Years			Average Scale Score of Students Tested in District Both Years			Average Scale Score of Students Tested in District Both Years		
	Grade 3 in 06-07	Grade 4 in 07-08	Difference	Grade 4- in 06-07	Grade 5 in 07-08	Difference	Grade 5- in 06-07	Grade 6 in 07-08	Difference
All Students	311.54	291.56	-19.98	316.27	314.63	-1.64	337.88	336.20	-1.67
AF AM	313.40	288.60	-24.80	303.40	312.20	8.80	*	*	*
AKNA/AI	*	*	*	286.70	282.20	-4.50	*	*	*
Asian	376.00	353.80	-22.20	328.33	328.00	-0.33	282.20	296.20	14.00
NH/OPI	272.14	253.86	-18.29	300.60	322.20	21.60	*	*	*
White	323.44	308.44	-15.00	353.00	346.00	-7.00	334.38	339.88	5.50
Hispanic	272.40	253.10	-19.30	316.67	307.56	-9.11	348.40	332.93	-15.47
ME	335.88	310.50	-25.38	323.79	319.07	-4.71	358.18	358.45	0.27
EDS	311.54	291.56	-19.98	316.27	314.63	-1.64	337.88	336.20	-1.67
Non-EDS	*	*	*	*	*	*	*	*	*
SWD	274.33	252.56	-21.78	288.33	282.33	-6.00	275.13	295.13	20.00
Non-SWD	320.13	300.56	-19.56	319.62	318.50	-1.12	350.12	344.22	-5.90
LEP	257.58	234.00	-23.58	249.43	247.71	-1.71	270.29	260.14	-10.14
Not LEP	329.53	310.75	-18.78	325.82	324.18	-1.63	349.14	348.88	-0.26
Migrant	*	*	*	*	*	*	*	*	*
Not Migrant	311.54	291.56	-19.98	314.38	312.36	-2.02	337.00	336.44	-0.56
Female	325.24	307.76	-17.48	334.93	329.93	-5.00	338.32	334.32	-4.00
Male	300.89	278.96	-21.93	298.90	300.38	1.48	337.42	338.17	0.75

* Results cannot be published without releasing personally identifiable information based upon the EED reporting protocol

Change in Mean Scale Score in SBA Mathematics by Grade between 2006-07 and 2007-08



Reading: SBA Results Compared for North Star Elementary School, District and State Grades 3 Through 6															
	% Advanced Proficient			% Proficient			% Below Proficient			% Far Below Proficient			% Tested		
	School	District	State	School	District	State	School	District	State	School	District	State	School	District	State
All Students	18.14%	39.70%	35.67%	49.37%	43.89%	45.50%	21.94%	11.60%	13.02%	10.55%	4.80%	5.80%	98.34%	98.15%	97.98%
AF AM	16.67%	20.73%	22.99%	66.67%	54.18%	53.49%	*	17.79%	16.46%	*	7.30%	7.06%	100.00%	98.04%	97.49%
AKNA/AI	*	20.23%	14.62%	*	51.11%	48.17%	38.71%	18.54%	24.83%	16.13%	10.11%	12.37%	96.88%	96.88%	97.59%
Asian	23.33%	30.22%	28.26%	60.00%	48.71%	51.04%	*	15.32%	15.32%	*	5.75%	5.38%	100.00%	97.64%	97.67%
NH/OPI	*	14.67%	N/A	*	51.03%	N/A	33.33%	24.59%	N/A	12.50%	9.71%	N/A	100.00%	98.98%	N/A
White	18.18%	52.75%	47.28%	60.61%	38.06%	42.41%	*	6.69%	7.27%	*	2.50%	3.03%	97.06%	98.68%	98.28%
Hispanic	26.67%	32.35%	31.74%	26.67%	46.43%	48.60%	26.67%	14.67%	13.66%	20.00%	6.55%	6.00%	95.74%	97.14%	97.32%
ME	20.00%	33.26%	34.76%	56.00%	48.25%	47.75%	16.00%	13.47%	12.80%	8.00%	5.01%	4.70%	100.00%	98.15%	98.03%
EDS	18.14%	22.85%	21.47%	49.37%	49.71%	48.65%	21.94%	19.04%	20.31%	10.55%	8.40%	9.57%	98.34%	97.50%	96.44%
Not EDS	*	51.44%	46.31%	*	39.84%	43.15%	*	6.42%	7.56%	*	2.30%	2.98%	N/A	98.61%	99.16%
SWD	*	10.08%	9.29%	*	37.10%	37.96%	40.48%	32.15%	31.20%	35.71%	20.67%	21.55%	95.45%	94.28%	93.60%
Non-SWD	22.05%	45.02%	40.09%	54.87%	45.12%	46.77%	17.95%	7.91%	9.98%	5.13%	1.95%	3.17%	98.98%	98.88%	98.75%
LEP	*	4.97%	3.12%	*	39.93%	38.06%	39.13%	37.14%	38.40%	21.74%	17.96%	20.42%	95.83%	94.25%	96.11%
Not LEP	21.47%	42.78%	39.95%	52.88%	44.25%	46.48%	17.80%	9.33%	9.68%	7.85%	3.64%	3.88%	98.96%	98.51%	98.23%
Migrant	30.00%	27.01%	17.29%	50.00%	50.34%	48.58%	*	16.44%	23.78%	*	6.21%	10.35%	100.00%	98.35%	98.50%
Not Migrant	17.62%	40.26%	36.97%	49.34%	43.61%	45.29%	22.03%	11.38%	12.26%	11.01%	4.74%	5.48%	98.27%	98.14%	97.94%
Female	23.01%	44.40%	39.45%	55.75%	43.41%	45.33%	11.50%	8.75%	10.85%	9.73%	3.44%	4.37%	98.26%	98.39%	98.31%
Male	13.71%	35.15%	32.09%	43.55%	44.37%	45.67%	31.45%	14.36%	15.08%	11.29%	6.13%	7.16%	98.41%	97.92%	97.66%

* Results cannot be published without releasing personally identifiable information based upon the EED reporting protocol

Writing: SBA Results Compared for North Star Elementary School, District and State Grades 3 Through 6															
	% Advanced Proficient			% Proficient			% Below Proficient			% Far Below Proficient			% Tested		
	School	District	State	School	District	State	School	District	State	School	District	State	School	District	State
All Students	11.86%	34.87%	30.49%	46.19%	44.25%	44.50%	34.75%	18.78%	22.32%	7.20%	2.10%	2.69%	97.93%	98.11%	97.96%
AF AM	12.50%	20.71%	20.51%	50.00%	46.71%	48.68%	*	28.71%	27.18%	*	3.88%	3.63%	100.00%	98.15%	97.71%
AKNA/AI	*	17.15%	12.11%	*	45.31%	41.05%	45.16%	33.38%	40.69%	12.90%	4.15%	6.15%	96.88%	96.51%	97.64%
Asian	20.69%	30.17%	28.49%	41.38%	45.92%	45.93%	*	21.33%	23.31%	*	2.58%	2.27%	96.67%	97.56%	97.67%
NH/OPI	*	14.02%	N/A	33.33%	42.89%	N/A	50.00%	39.38%	N/A	*	3.71%	N/A	100.00%	99.18%	N/A
White	18.18%	45.85%	40.04%	48.48%	41.91%	44.71%	*	11.26%	13.97%	*	0.99%	1.28%	97.06%	98.66%	98.22%
Hispanic	11.11%	27.33%	27.00%	44.44%	47.25%	48.36%	33.33%	22.54%	22.23%	11.11%	2.88%	2.41%	95.74%	97.07%	97.36%
ME	12.00%	28.51%	29.14%	56.00%	47.68%	47.29%	*	21.31%	21.37%	*	2.51%	2.20%	100.00%	98.15%	97.96%
EDS	11.86%	18.92%	17.53%	46.19%	47.34%	45.15%	34.75%	29.95%	32.95%	7.20%	3.79%	4.37%	97.93%	97.50%	96.53%
Not EDS	*	45.99%	40.21%	*	42.10%	44.01%	*	10.99%	14.35%	*	0.92%	1.44%	N/A	98.54%	99.06%
SWD	*	7.09%	6.94%	*	38.82%	37.02%	61.90%	45.96%	47.34%	16.67%	8.12%	8.69%	95.45%	94.28%	93.97%
Non-SWD	14.43%	39.86%	34.45%	51.55%	45.23%	45.76%	28.87%	13.89%	18.11%	5.15%	1.02%	1.69%	98.48%	98.83%	98.66%
LEP	*	4.71%	3.14%	*	37.05%	30.66%	52.17%	50.57%	56.76%	17.39%	7.67%	9.44%	95.83%	94.25%	96.18%
Not LEP	13.68%	37.55%	34.08%	51.05%	44.89%	46.32%	30.53%	15.96%	17.79%	4.74%	1.60%	1.81%	98.45%	98.47%	98.20%
Migrant	*	21.44%	14.20%	50.00%	48.58%	42.55%	30.00%	26.63%	38.57%	*	3.35%	4.68%	100.00%	98.51%	98.58%
Not Migrant	11.50%	35.46%	31.63%	46.02%	44.06%	44.64%	34.96%	18.43%	21.18%	7.52%	2.04%	2.55%	97.84%	98.09%	97.92%
Female	17.86%	42.63%	37.48%	54.46%	42.50%	43.42%	22.32%	13.62%	17.40%	5.36%	1.26%	1.70%	97.39%	98.32%	98.22%
Male	6.45%	27.36%	23.87%	38.71%	45.96%	45.52%	45.97%	23.78%	26.98%	8.87%	2.91%	3.63%	98.41%	97.90%	97.72%

* Results cannot be published without releasing personally identifiable information based upon the EED reporting protocol

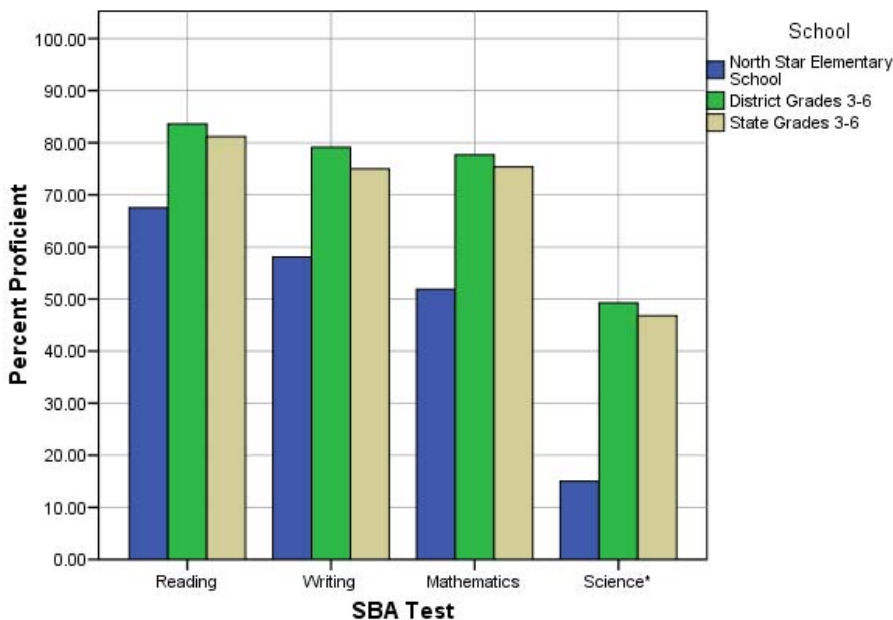
Mathematics: SBA Results Compared for North Star Elementary School, District and State Grades 3 Through 6															
	% Advanced Proficient			% Proficient			% Below Proficient			% Far Below Proficient			% Tested		
	School	District	State	School	District	State	School	District	State	School	District	State	School	District	State
All Students	16.32%	39.81%	36.08%	35.56%	37.84%	39.26%	19.67%	12.46%	13.78%	28.45%	9.88%	10.88%	99.17%	98.52%	98.12%
AF AM	16.67%	19.48%	22.09%	25.00%	40.14%	41.60%	16.67%	20.19%	18.61%	41.67%	20.19%	17.70%	100.00%	98.38%	97.78%
AKNA/AI	*	23.20%	18.26%	*	39.51%	39.14%	25.81%	19.22%	21.79%	38.71%	18.07%	20.81%	96.88%	96.96%	97.72%
Asian	23.33%	37.02%	34.29%	40.00%	41.20%	41.23%	23.33%	13.76%	14.10%	13.33%	8.03%	10.38%	100.00%	99.27%	98.99%
NH/OPI	*	18.52%	N/A	*	38.07%	N/A	29.17%	20.16%	N/A	41.67%	23.25%	N/A	100.00%	99.39%	N/A
White	24.24%	51.12%	45.75%	42.42%	35.15%	38.35%	24.24%	8.41%	9.81%	9.09%	5.32%	6.09%	97.06%	98.69%	98.17%
Hispanic	19.15%	31.85%	31.11%	27.66%	40.04%	42.19%	10.64%	15.02%	15.10%	42.55%	13.09%	11.60%	100.00%	98.66%	98.47%
ME	14.00%	33.75%	35.45%	52.00%	41.21%	40.61%	16.00%	13.93%	13.30%	18.00%	11.11%	10.64%	100.00%	98.26%	98.00%
EDS	16.32%	24.26%	23.31%	35.56%	41.50%	40.98%	19.67%	17.54%	18.60%	28.45%	16.70%	17.11%	99.17%	98.14%	96.77%
Not EDS	*	50.70%	45.67%	*	35.28%	37.96%	*	8.91%	10.16%	*	5.12%	6.21%	N/A	98.79%	99.16%
SWD	*	12.52%	12.06%	*	31.53%	32.14%	9.52%	23.68%	23.60%	66.67%	32.27%	32.20%	95.45%	94.19%	93.99%
Non-SWD	19.29%	44.69%	40.12%	38.58%	38.97%	40.45%	21.83%	10.46%	12.13%	20.30%	5.88%	7.30%	100.00%	99.34%	98.85%
LEP	*	8.22%	6.05%	*	36.74%	34.10%	20.83%	24.50%	27.43%	58.33%	30.54%	32.42%	100.00%	97.95%	97.56%
Not LEP	19.37%	42.73%	40.09%	40.31%	37.94%	39.95%	19.37%	11.35%	11.96%	20.94%	7.98%	8.01%	98.96%	98.57%	98.19%
Migrant	30.00%	30.94%	22.37%	40.00%	43.65%	40.27%	*	14.21%	20.36%	*	11.20%	17.00%	100.00%	98.68%	98.54%
Not Migrant	15.72%	40.21%	37.05%	35.37%	37.58%	39.19%	20.09%	12.38%	13.31%	28.82%	9.83%	10.45%	99.13%	98.51%	98.09%
Female	17.54%	41.01%	36.83%	42.11%	38.32%	39.88%	18.42%	11.59%	13.34%	21.93%	9.09%	9.96%	99.13%	98.71%	98.31%
Male	15.20%	38.66%	35.38%	29.60%	37.38%	38.67%	20.80%	13.30%	14.20%	34.40%	10.66%	11.75%	99.21%	98.34%	97.94%

* Results cannot be published without releasing personally identifiable information based upon the EED reporting protocol

Science: SBA Results Compared for North Star Elementary School, District and State Grade 4															
	% Advanced Proficient			% Proficient			% Below Proficient			% Far Below Proficient			% Tested		
	School	District	State	School	District	State	School	District	State	School	District	State	School	District	State
All Students	5.00%	23.68%	22.1%	10.00%	25.57%	24.7%	41.67%	31.70%	31.3%	43.33%	19.06%	21.9%	100.00%	97.81%	95.35%
AF AM	*	9.18%	8.9%	*	18.84%	23.3%	*	39.13%	38.0%	71.43%	32.85%	29.8%	100.00%	98.57%	94.49%
AKNA/AI	*	6.54%	6.8%	*	21.50%	14.2%	80.00%	42.99%	35.2%	*	28.97%	43.8%	100.00%	96.40%	94.98%
Asian	*	10.18%	13.4%	*	21.40%	19.4%	71.43%	39.30%	37.5%	*	29.12%	29.7%	100.00%	98.28%	97.39%
NH/OPI	*	6.57%	N/A	*	8.03%	N/A	*	34.31%	N/A	80.00%	51.09%	N/A	100.00%	98.56%	N/A
White	*	36.40%	32.3%	*	29.08%	29.9%	36.36%	25.33%	27.3%	36.36%	9.19%	10.5%	100.00%	97.87%	94.97%
Hispanic	*	16.17%	18.2%	*	26.15%	26.0%	40.00%	32.08%	33.9%	50.00%	25.61%	21.9%	100.00%	97.12%	96.39%
ME	*	16.06%	18.5%	*	26.12%	26.8%	40.00%	37.47%	35.9%	30.00%	20.34%	18.7%	100.00%	98.32%	96.90%
EDS	5.00%	8.34%	11.0%	10.00%	22.44%	20.1%	41.67%	38.10%	34.7%	43.33%	31.12%	34.2%	100.00%	97.73%	94.99%
Not EDS	*	35.00%	31.2%	*	27.88%	28.5%	*	26.97%	28.5%	*	10.15%	11.9%	N/A	97.87%	95.64%
SWD	*	8.38%	7.7%	*	16.38%	15.2%	33.33%	36.57%	36.6%	55.56%	38.67%	40.5%	100.00%	93.25%	91.70%
Non-SWD	5.88%	26.43%	24.7%	9.80%	27.22%	26.4%	43.14%	30.82%	30.4%	41.18%	15.53%	18.5%	100.00%	98.68%	96.04%
LEP	*	2.00%	1.5%	*	5.14%	3.8%	*	34.00%	28.3%	80.00%	58.86%	66.5%	100.00%	96.15%	95.67%
Not LEP	*	26.13%	25.2%	*	27.88%	27.9%	51.11%	31.44%	31.8%	31.11%	14.55%	15.1%	100.00%	98.00%	95.30%
Migrant	*	9.70%	9.0%	*	26.87%	15.3%	*	39.55%	34.3%	*	23.88%	41.4%	N/A	97.10%	97.32%
Not Migrant	5.00%	24.24%	23.0%	10.00%	25.51%	25.3%	41.67%	31.38%	31.1%	43.33%	18.86%	20.5%	100.00%	97.84%	95.21%
Female	*	22.73%	20.8%	*	25.78%	25.2%	55.17%	33.63%	32.6%	31.03%	17.87%	21.4%	100.00%	98.05%	95.43%
Male	*	24.61%	23.4%	*	25.36%	24.2%	29.03%	29.80%	30.1%	54.84%	20.23%	22.3%	100.00%	97.58%	95.27%

* Results cannot be published without releasing personally identifiable information based upon the EED reporting protocol

2007-08 SBA Results Compared for North Star Elementary School, District and State

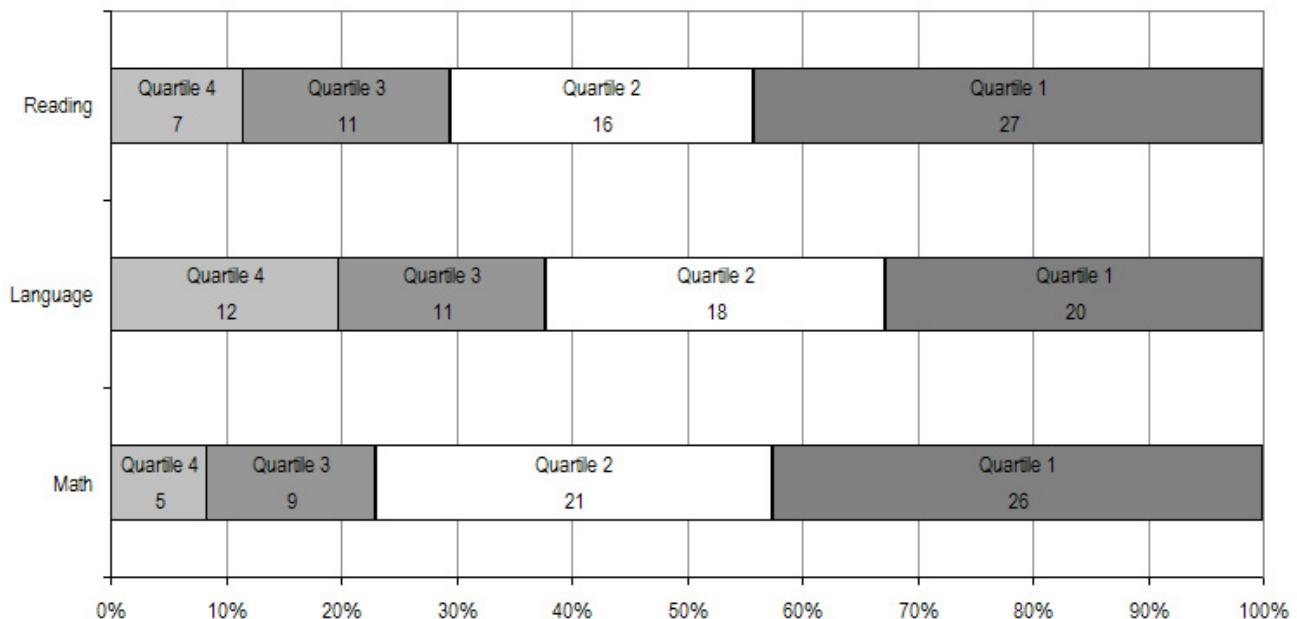


* 2007-08 was the first year Science was administered for grades 4, 8 and 10 on the SBA.

North Star Elementary School TerraNova Grade 5 Percent in Each Quartile								
Reading	Above Average		Average				Below Average	
	4th Quartile (76-99 percentile)		3rd Quartile (51-75 percentile)		2nd Quartile (26-50 percentile)		1st Quartile (1-25 percentile)	
	School	District	School	District	School	District	School	District
07-08	11.48%	25.65%	18.03%	24.08%	26.23%	23.73%	44.26%	26.55%
06-07	17.6%	33.1%	21.6%	26.1%	23.5%	23.6%	37.3%	17.2%
05-06	12.0%	30.4%	30.0%	26.8%	24.0%	24.5%	34.0%	18.3%
04-05	12.7%	29.2%	16.4%	27.6%	25.5%	24.5%	45.5%	18.7%
03-04	10.3%	30.6%	23.5%	26.9%	32.4%	24.2%	33.8%	18.3%
Language								
07-08	19.67%	26.79%	18.03%	27.20%	29.51%	24.12%	32.79%	21.89%
06-07	25.5%	34.7%	17.6%	26.9%	19.6%	21.4%	37.3%	17.0%
05-06	22.0%	34.0%	18.0%	26.5%	26.0%	22.0%	34.0%	17.5%
04-05	16.4%	32.1%	21.8%	28.3%	14.5%	21.2%	47.3%	18.4%
03-04	8.8%	34.1%	33.8%	26.5%	29.4%	21.7%	27.9%	17.7%
Mathematics								
07-08	8.20%	25.45%	14.75%	26.40%	34.43%	24.47%	42.62%	23.68%
06-07	13.5%	29.7%	25.0%	31.6%	30.8%	21.2%	30.8%	17.4%
05-06	10.0%	28.4%	28.0%	31.9%	22.0%	22.3%	40.0%	17.5%
04-05	5.5%	26.9%	21.8%	31.1%	23.6%	22.9%	49.1%	19.1%
03-04	8.8%	28.3%	23.5%	29.3%	25.0%	22.6%	42.6%	19.8%

The double bold line indicates a change from the TerraNova 2nd edition to the TerraNova 3rd edition.

2007-08 TerraNova 3rd Edition Grade 5 Percent and Count of Students in Each Quartile For North Star Elementary School



Climate Survey Results for North Star Elementary School

The Anchorage School District administered the School Climate and Connectedness Surveys in spring 2008 to students in grades 5-12, all school staff and parents/guardians of students in grades K-12. The surveys were done to provide schools with information about perceptions and experiences related to school climate for use in setting school goals and redirecting resources. In the spring of 2008 grades 3 and 4 students were involved in a pilot survey for measuring school climate and connectedness. The results are currently under review by the American Institutes for Research.

Respondents were asked to answer a series of questions that were related to a certain concept. For each item, there were five options from which to choose a response. The answer options ranged from strongly disagree (1) to strongly agree (5).

Student Survey Response Rate			
	North Star Elementary School	Overall Elementary Schools	District**
# Surveys Completed	96	5,579	21,629
# Reportable Surveys	90	4,969	18,654
# Students Enrolled*	122	6,331	28,945
Reportable Response Rate	73.77%	78.49%	64.45%

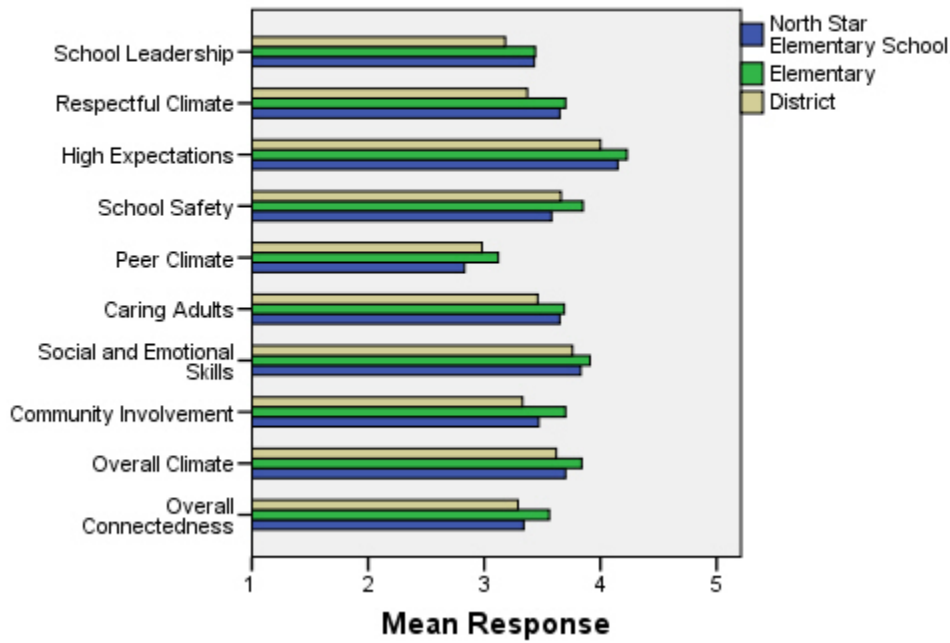
*Number enrolled as of April 1, 2008

**District data does not include KCC responses

Each question in the survey related to a factor or concept, and a score was calculated based on the mean response for the questions related to each factor. The factors measured in the survey were:

- **School Leadership and Student Involvement:** This factor reflects students' feelings about the decision making of school leaders as well as student participation in the school governance. Students selected responses between 1 and 5 where 1 indicates a low level of school leadership and student involvement and 5 indicates a high level of school leadership and student involvement.
- **Respectful Climate:** This factor reflects students' feelings about fairness of rules and respect for students' contributions. Students selected responses between 1 and 5 where 1 indicates a lack of a respectful climate and 5 indicates a highly respectful climate for students.
- **High Expectations:** This factor reflects students' feelings about their own expectations as well as those of adults in their school and community. Students selected responses between 1 and 5 where 1 indicates a lack of high expectations and 5 indicates a high level of high expectations.
- **School Safety:** This factor reflects students' feelings about bullies and gangs at school as well as general crime and violence in the community. Students selected responses between 1 and 5 where 1 indicates a low level of school safety and 5 indicates a high level of school safety.
- **Peer Climate:** This factor reflects students' feelings about how respectful students are to one another and how helpful students are to other students. Students selected responses between 1 and 5 where 1 indicates a more negative peer climate and 5 indicates a very positive peer climate at the school.
- **Caring Adults:** This factor reflects students' feelings about how close they feel to adults in the school. Students selected responses between 1 and 5 where 1 indicates a lack of caring adult relationships and 5 indicates strong caring adult relationships at the school.
- **Social and Emotional Learning:** This factor reflects students' ability to think about the consequences of their actions and to empathize with others. Students selected responses between 1 and 5 where 1 indicates that students at the school perceive themselves as having poorer social and emotional learning, and 5 indicates higher levels of social and emotional learning.
- **Community Involvement:** This factor reflects students' feelings about how supportive and welcoming the school is with parents and the community. Students selected responses between 1 and 5 where 1 indicates a less supportive and welcoming environment and 5 indicates a more supportive and welcoming environment.
- **Overall Climate:** The overall climate score was computed as the mean of three scales: school leadership, high expectations and school safety.
- **Overall Connectedness:** Overall connectedness score was computed as a mean of four scales: respectful climate, peer climate, caring adults and community involvement.

Climate and Connectedness Student Survey - North Star



Student Survey Mean Response by Factors Related to School Climate - Overall District			
	North Star Elementary School	Overall Elementary Schools	District
School Leadership	3.43	3.44	3.18
Respectful Climate	3.65	3.70	3.37
High Expectations	4.15	4.23	4.00
School Safety	3.58	3.85	3.66
Peer Climate	2.83	3.12	2.98
Caring Adults	3.65	3.69	3.46
Social and Emotional Skills	3.83	3.91	3.76
Community Involvement	3.47	3.70	3.33
Overall Climate	3.70	3.84	3.62
Overall Connectedness	3.34	3.56	3.29

Range is from a low of 1 to a high of 5

Students were also asked to answer questions related to school danger. The following table provides the responses for those questions:

Student Survey Results of the School Danger Questions - Percent of Students Responding in Each Category					
	0 Times	1-2 Times	3-6 Times	7-12 Times	> 12 Times
North Star Elementary School					
Under the influence of drugs?	96.55%	2.30%	0.00%	0.00%	1.15%
Under the influence of alcohol?	89.66%	6.90%	2.30%	0.00%	1.15%
Destroy things (vandalism)?	34.52%	30.95%	16.67%	9.52%	8.33%
Get into fights?	10.84%	32.53%	25.30%	8.43%	22.89%
Steal things?	38.55%	27.71%	12.05%	6.02%	15.66%
Threaten or bully?	25.61%	23.17%	14.63%	8.54%	28.05%
Under the influence of inhalants?	70.24%	16.67%	5.95%	3.57%	3.57%
Carry weapons?	70.93%	20.93%	6.98%	1.16%	0.00%
Overall Elementary Schools					
Under the influence of drugs?	91.87%	5.65%	1.22%	0.31%	0.96%
Under the influence of alcohol?	91.42%	6.01%	1.16%	0.51%	0.90%
Destroy things (vandalism)?	46.82%	32.08%	12.45%	3.30%	5.36%
Get into fights?	22.32%	35.75%	22.56%	7.96%	11.41%
Steal things?	49.79%	27.92%	12.01%	4.33%	5.95%
Threaten or bully?	32.34%	28.83%	17.08%	7.78%	13.97%
Under the influence of inhalants?	71.03%	17.07%	6.14%	2.63%	3.12%
Carry weapons?	79.22%	15.35%	3.17%	0.59%	1.68%
District					
Under the influence of drugs?	60.45%	15.05%	9.54%	3.92%	11.04%
Under the influence of alcohol?	63.11%	16.37%	8.90%	4.43%	7.19%
Destroy things (vandalism)?	41.26%	29.47%	15.45%	5.88%	7.94%
Get into fights?	26.40%	35.20%	21.96%	7.11%	9.33%
Steal things?	44.80%	25.68%	13.81%	6.98%	8.74%
Threaten or bully?	32.21%	26.21%	16.68%	9.27%	15.63%
Under the influence of inhalants?	72.79%	14.21%	5.66%	2.48%	4.87%
Carry weapons?	69.45%	19.15%	5.34%	2.01%	4.06%

Student Survey Results of the Mean Factor Score by Ethnicity (Self-Reported)							
	AKNA/AI	AF AM	Hispanic	Asian/NH	White	Other	Multi-Ethnic
North Star Elementary School							
School Leadership	3.55	3.38	3.93	3.31	2.86	3.63	3.45
Respectful Climate	3.82	3.60	3.95	3.53	3.20	3.38	3.89
High Expectations	4.03	4.29	4.55	3.86	4.00	4.31	4.22
School Safety	3.60	3.49	3.80	3.55	3.53	3.28	3.58
Peer Climate	2.84	2.64	3.05	2.88	2.64	2.90	2.78
Caring Adults	3.64	3.67	4.00	3.24	3.62	3.80	3.91
Social and Emotional Skills	3.97	3.90	4.12	3.77	3.38	3.38	3.82
Community Involvement	3.48	3.31	3.87	3.38	3.36	3.11	3.56
Overall Climate	3.73	3.72	4.13	3.50	3.42	3.69	3.75
Overall Connectedness	3.44	3.36	3.64	3.05	3.18	3.24	3.39
Overall Elementary Schools							
School Leadership	3.56	3.50	3.52	3.55	3.37	3.44	3.42
Respectful Climate	3.75	3.60	3.66	3.72	3.71	3.69	3.63
High Expectations	4.12	4.23	4.23	4.22	4.26	4.19	4.25
School Safety	3.75	3.63	3.73	3.68	4.03	3.66	3.79
Peer Climate	3.12	2.94	3.12	3.18	3.16	3.05	3.05
Caring Adults	3.64	3.73	3.64	3.59	3.74	3.60	3.76
Social and Emotional Skills	3.86	3.84	3.91	3.95	3.93	3.90	3.89
Community Involvement	3.66	3.60	3.67	3.66	3.75	3.66	3.70
Overall Climate	3.81	3.79	3.84	3.81	3.89	3.76	3.82
Overall Connectedness	3.56	3.49	3.51	3.53	3.60	3.49	3.56
District							
School Leadership	3.33	3.14	3.19	3.28	3.14	3.17	3.15
Respectful Climate	3.48	3.18	3.32	3.39	3.39	3.37	3.33
High Expectations	3.98	3.94	3.96	4.02	4.02	4.00	4.01
School Safety	3.60	3.48	3.55	3.47	3.78	3.51	3.62
Peer Climate	3.01	2.85	2.94	3.05	3.00	2.92	2.93
Caring Adults	3.49	3.43	3.37	3.33	3.51	3.42	3.46
Social and Emotional Skills	3.73	3.66	3.73	3.81	3.78	3.75	3.74
Community Involvement	3.37	3.22	3.31	3.29	3.34	3.34	3.31
Overall Climate	3.64	3.52	3.57	3.59	3.65	3.56	3.60
Overall Connectedness	3.33	3.17	3.24	3.26	3.31	3.26	3.27

The response rate is not high enough to provide statistically reliable results for North Star Elementary School's Staff Survey Results.

The response rate is not high enough to provide statistically reliable results for North Star Elementary School's Parent/Guardian Survey Results.