

### Nunaka Valley Elementary School Overview

#### Statement of Program

Nunaka Valley Elementary is a neighborhood school located in northeast Anchorage, nestled between Russian Jack Park and Nunaka Valley Park. The school provides a K-6 educational program with emphasis on academic achievement, cooperation and social-emotional learning. We strive to build partnerships with families to increase the developmental resources of our students and support each student's goal of reaching his or her potential.

Nunaka Valley is the early intervention site for preschool children with disabilities. Our staff is dedicated to offering a stimulating and child-centered educational program while being committed to maintaining a safe and positive learning environment. Our PTA offers monthly activities to encourage family participation and provide opportunities for safe and positive social interaction. We welcome families as active participants in the process.

From the School Report Card

School Goals	
Goal	Level of Achievement
The number of students rated not proficient on the district reading assessment will decrease by 10 percent.	Partially Attained
The number of students rated not proficient on the state math assessment will decrease by 10 percent.	Partially Attained
The school will build assets and positive relationships that support student achievement, wellness, safety and healthy choices.	Partially Attained

From the School Report Card

Budget*	
2006-07 Actual Expenditures	\$1,517,811
2007-08 Revised Budgeted Amount	\$1,915,150
2008-09 Proposed Budget	\$2,025,227

\*Dollars budgeted or expended are general fund only  
From IFAS

Nunaka Valley Elementary School Characteristics			
	School	District	Source of Information
Membership	293	48,858	Fall OASIS
Capacity	73.68%	N/A	2008-18 ASD Capital Improvement Plan
Attendance Rate	92.93%	92.83%	NCLB Summer Data Collection
Retention Rate K-8	0.00%	0.60%	SMS and NCLB Summer Data Collection
Transiency Rate	37.50%	26.07%	NCLB Summer Data Collection
Economically Disadvantaged	195	17,717	Fall OASIS
Average Weekly Volunteer Hours	20	4,660	Department of Education Report Card Report
Students Taking the Alternate Assessment	1	228	SMS
Change in Enrollment	-3.30%	-0.76%	Fall Oasis

Teacher Qualification				
Number of Teachers	Percent Fully Licensed	Percent With Advanced Degrees	Number Nationally Board Certified	Percent of Classes Taught by "Highly Qualified Teachers"
27	100.00%	33.33%	1	90.90%

Nunaka Valley Elementary School Business Partnerships
AFD Fire Station #6; Blockbuster Video; Immanuel Presbyterian Church

From the School Report Card

Ethnicity Report							
African-American/Black	Alaska Native/American Indian	Asian	Native Hawaiian/Other Pacific Islander	White	Hispanic	Multi-Ethnic	Total
21	62	19	15	87	38	51	293

From Fall Oasis

Full Academic Year		
Students Enrolled	Students Enrolled for FAY	Percent FAY
290	244	84.14%

From participation file (Grades 3-10)

Nunaka Valley Elementary School  
 2007-08 Adequate Yearly Progress  
 Status Report

Does Not Meet AYP  
 Level 2

AMO For Language Arts: 77.18%  
 AMO For Mathematics: 66.09%

Group	Participation Rate				"FAY" (D) Tested & Enrolled "FAY"	Language Arts Performance				Mathematics Performance			
	(A) Number Enrolled	(B) Number Tested	Participation Rate (%)	(C) Participation Rate Met		(E) Proficient on LA	(F) Percent Proficient on LA	(G) LA Target	(H) Met AMO for LA	(I) Proficient on Mathematics	(J) Percent Proficient in Mathematics	(K) Mathematics Target	(L) Met AMO for Mathematics
All Students	125	124	99.2%	Yes	112	68	60.7%	67.9%	No	71	63.4%	55.7%	Yes
AF AM	6	6	N/A	N/A	N/A	N/A	N/A	N/A	N/A	N/A	N/A	N/A	N/A
AKNA/AI	35	35	100%	Yes	32	16	50%	59.9%	Yes-SH	17	53.1%	46.6%	Yes
Asian/NH/OPI	15	15	N/A	N/A	N/A	N/A	N/A	N/A	N/A	N/A	N/A	N/A	N/A
White	38	37	97.4%	Yes	33	24	72.7%	60.2%	Yes	20	60.6%	46.9%	Yes
Hispanic	14	14	N/A	N/A	N/A	N/A	N/A	N/A	N/A	N/A	N/A	N/A	N/A
ME	17	17	N/A	N/A	N/A	N/A	N/A	N/A	N/A	N/A	N/A	N/A	N/A
EDS	86	86	100%	Yes	79	48	60.8%	66.2%	Yes-SH	50	63.3%	53.7%	Yes
SWD	28	27	96.4%	Yes	N/A	N/A	N/A	N/A	N/A	N/A	N/A	N/A	N/A
LEP	18	18	N/A	N/A	N/A	N/A	N/A	N/A	N/A	N/A	N/A	N/A	N/A

Attendance Rate: Met

92.9% (Threshold is 85%)

N/A is used to indicate:

- (1) Subgroups with 20 or fewer students enrolled on the first day of testing shall not be included in participation rate calculation.
- (2) Subgroups with 25 or fewer students enrolled for the "full academic year" shall not have the performance score computed.

\* For the groups where the number enrolled is less than or equal to 40, participation is met when no more than two miss the test. Groups can also meet this target using the average of the past two or three years.

\*\* When a group achieves a "Yes" without meeting the listed target, it has done so using either the 99% confidence interval or Safe Harbor.

\*\*\* The results cannot be published without releasing personally identifiable information based upon the EED reporting protocol.

This document was prepared by the ASD Assessment and Evaluation Department.

7/10/2008

Nunaka Valley Elementary School  
 2007-08 Adequate Yearly Progress  
 Growth Report

AMO For Language Arts: 77.18%  
 AMO For Mathematics: 66.09%

Group	"FAY" (D) Tested & Enrolled "FAY"	Language Arts Performance				Mathematics Performance			
		(E) Proficient on LA	(F) Percent Proficient on LA	(G) LA Target	(H) Met AMO for LA	(I) Proficient on Mathematics	(J) Percent Proficient in Mathematics	(K) Mathematics Target	(L) Met AMO for Mathematics
All Students									
AF AM									
AKNA/AI									
Asian									
White									
Hispanic									
ME									
EDS									
SWD									
LEP									

N/A is used to indicate:

- (1) Subgroups with 20 or fewer students enrolled on the first day of testing shall not be included in participation rate calculation.
- (2) Subgroups with 25 or fewer students enrolled for the "full academic year" shall not have the performance score computed.

\* For the groups where the number enrolled is less than or equal to 40, participation is met when no more than two miss the test. Groups can also meet this target using the average of the past two or three years.

\*\*\* The results cannot be published without releasing personally identifiable information based upon the EED reporting protocol.  
 This document was prepared by the ASD Assessment and Evaluation Department.

SBA Proficiency Comparison by Grade for Nunaka Valley Elementary School																
	Reading Percent Proficient				Writing Percent Proficient				Mathematics Percent Proficient				Science* Percent Proficient			
	04-05	05-06	06-07	07-08	04-05	05-06	06-07	07-08	04-05	05-06	06-07	07-08	04-05	05-06	06-07	07-08
All Students	72.79%	70.07%	70.71%	73.53%	62.50%	68.71%	68.61%	62.75%	50.00%	58.90%	63.97%	64.23%	N/A	N/A	N/A	52.17%
Grade 3	71.88%	75.56%	75.00%	62.50%	56.25%	66.67%	64.29%	62.50%	50.00%	64.44%	70.37%	75.68%	N/A	N/A	N/A	N/A
Grade 4	76.32%	67.74%	72.09%	78.26%	52.63%	80.65%	77.50%	69.57%	47.37%	51.61%	72.50%	69.57%	N/A	N/A	N/A	52.17%
Grade 5	75.61%	54.29%	66.67%	80.00%	73.17%	60.00%	66.67%	57.50%	53.66%	44.12%	53.33%	55.00%	N/A	N/A	N/A	N/A
Grade 6	64.00%	80.56%	69.23%	65.22%	68.00%	69.44%	64.10%	65.22%	48.00%	72.22%	58.97%	56.52%	N/A	N/A	N/A	N/A

\* 2007-08 was the first year Science was administered for grades 4, 8 and 10 on the SBA.

SBA Proficient & Not Proficient by NCLB Groups for Nunaka Valley Elementary School								
	Reading		Writing		Mathematics		Science**	
	Percent Proficient	Percent Not Proficient	Percent Proficient	Percent Not Proficient	Percent Proficient	Percent Not Proficient	Percent Proficient	Percent Not Proficient
All Students	73.53%	26.47%	62.75%	37.25%	64.23%	35.77%	52.17%	47.83%
AF AM	60% or more	40% or fewer	60% or more	40% or fewer	60% or more	40% or fewer	*	*
AKNA/AI	74.07%	25.93%	51.85%	48.15%	52.94%	47.06%	42.86%	57.14%
Asian	75% or more	25% or fewer	75% or more	25% or fewer	75% or more	25% or fewer	*	*
NH/OPI	60% or more	40% or fewer	60% or more	40% or fewer	50.00%	50.00%	*	*
White	75.00%	25.00%	68.75%	31.25%	62.16%	37.84%	50.00%	50.00%
Hispanic	80% or more	20% or fewer	70.00%	30.00%	80% or more	20% or fewer	*	*
ME	50.00%	50.00%	50.00%	50.00%	58.82%	41.18%	*	*
EDS	73.61%	26.39%	59.72%	40.28%	63.95%	36.05%	61.11%	38.89%
Non-EDS	73.33%	26.67%	70.00%	30.00%	64.86%	35.14%	60% or fewer	40% or more
SWD	13.64%	86.36%	13.64%	86.36%	18.18%	81.82%	*	*
Non-SWD	90.00%	10.00%	76.25%	23.75%	74.26%	25.74%	60.00%	40.00%
LEP	42.86%	57.14%	42.86%	57.14%	50.00%	50.00%	*	*
Not LEP	75.79%	24.21%	64.21%	35.79%	65.22%	34.78%	55.00%	45.00%
Migrant	45.45%	54.55%	36.36%	63.64%	33.33%	66.67%	*	*
Not Migrant	76.92%	23.08%	65.93%	34.07%	67.57%	32.43%	52.38%	47.62%
Female	84.91%	15.09%	75.47%	24.53%	66.15%	33.85%	33.33%	66.67%
Male	61.22%	38.78%	48.98%	51.02%	62.07%	37.93%	64.29%	35.71%

\* Results cannot be published without releasing personally identifiable information based upon the EED reporting protocol

\*\* 2007-08 was the first year Science was administered for grades 4, 8 and 10 on the SBA.

SBA Mean Scale Score Comparison by NCLB Groups for Nunaka Valley Elementary School								
	Reading		Writing		Mathematics		Science***	
	06-07	07-08	06-07	07-08	06-07	07-08	06-07	07-08
All Students	351.15	348.30	339.23	332.21	327.70	332.50	N/A	297.09
AF AM	362.67	377.60	351.42	356.00	336.67	329.17	N/A	*
AKNA/AI	327.90	339.37	314.94	315.70	318.74	319.85	N/A	289.43
Asian**	355.00*	378.38	363.14*	367.25	331.29*	350.00	N/A	*
NH/OPI**	N/A	335.17	N/A	332.50	N/A	322.50	N/A	*
White	358.87	353.69	349.04	344.75	326.24	335.24	N/A	282.83
Hispanic	400.50	369.20	370.30	337.60	375.20	362.21	N/A	*
ME	362.25	316.29	350.91	302.86	319.27	322.82	N/A	*
EDS	343.14	349.58	331.32	331.08	321.54	333.06	N/A	297.67
Non-EDS	370.49	345.23	358.40	334.90	343.03	331.22	N/A	295.00
SWD	285.44	259.59	270.07	246.86	264.19	261.32	N/A	*
Non-SWD	366.85	372.70	356.20	355.68	343.43	348.01	N/A	313.35
LEP	333.48	305.29	323.32	297.29	301.32	303.13	N/A	*
Not LEP	354.27	351.47	341.79	334.78	331.98	334.55	N/A	304.30
Migrant	316.13	320.18	284.25	283.27	325.75	298.25	N/A	*
Not Migrant	353.27	351.70	342.64	338.12	327.82	336.21	N/A	301.24
Female	359.44	361.72	360.91	353.09	327.91	333.06	N/A	280.44
Male	340.73	333.80	312.21	309.61	327.44	331.88	N/A	307.79

\* Results cannot be published without releasing personally identifiable information based upon the EED reporting protocol

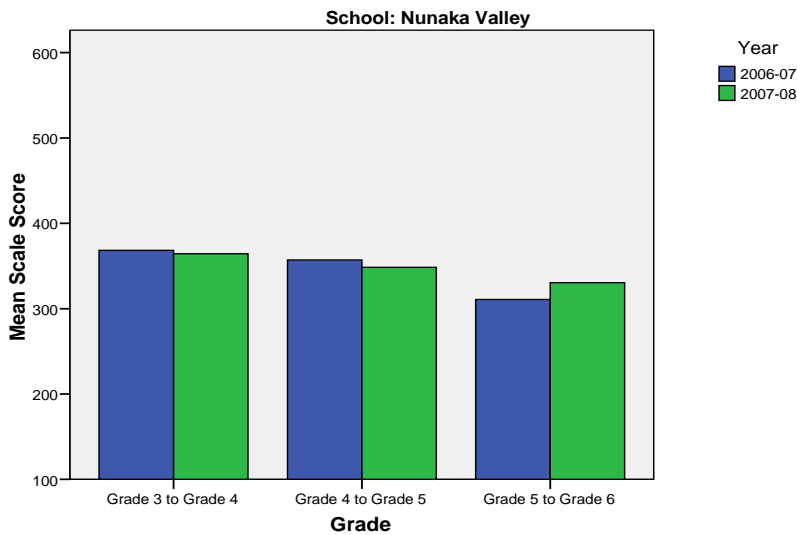
\*\* Prior to 2007-08 the Asian category includes Native Hawaiian/Other Pacific Islander. In 2007-08 Native Hawaiian/Other Pacific Islander is a separate ethnic category.

\*\*\* 2007-08 was the first year Science was administered for grades 4, 8 and 10 on the SBA.

Nunaka Valley Elementary School SBA Change Average Scale Score by NCLB Groups: Reading									
	Average Scale Score of Students Tested in District Both Years			Average Scale Score of Students Tested in District Both Years			Average Scale Score of Students Tested in District Both Years		
	Grade 3 in 06-07	Grade 4 in 07-08	Difference	Grade 4-in 06-07	Grade 5 in 07-08	Difference	Grade 5-in 06-07	Grade 6 in 07-08	Difference
All Students	368.35	364.35	-4.00	357.08	348.42	-8.67	310.78	330.43	19.65
AF AM	*	*	*	*	*	*	*	*	*
AKNA/AI	360.00	356.00	-4.00	346.10	338.40	-7.70	311.11	330.22	19.11
Asian	*	*	*	*	*	*	*	*	*
NH/OPI	*	*	*	*	*	*	*	*	*
White	342.00	342.60	0.60	361.93	361.07	-0.87	310.60	343.40	32.80
Hispanic	*	*	*	*	*	*	*	*	*
ME	*	*	*	*	*	*	*	*	*
EDS	367.53	366.07	-1.47	346.42	348.42	2.00	314.07	339.53	25.47
Non-EDS	370.80	359.20	-11.60	384.80	348.40	-36.40	304.63	313.38	8.75
SWD	*	*	*	245.20	257.40	12.20	263.71	263.14	-0.57
Non-SWD	388.88	389.06	0.18	375.13	363.10	-12.03	331.38	359.88	28.50
LEP	*	*	*	*	*	*	*	*	*
Not LEP	379.17	377.56	-1.61	357.08	348.42	-8.67	315.16	338.00	22.84
Migrant	*	*	*	*	*	*	279.80	291.40	11.60
Not Migrant	373.89	367.22	-6.67	359.97	350.47	-9.50	319.39	341.28	21.89
Female	370.88	373.38	2.50	371.36	372.27	0.91	300.25	337.58	37.33
Male	366.67	358.33	-8.33	334.64	310.93	-23.71	322.27	322.64	0.36

\* Results cannot be published without releasing personally identifiable information based upon the EED reporting protocol

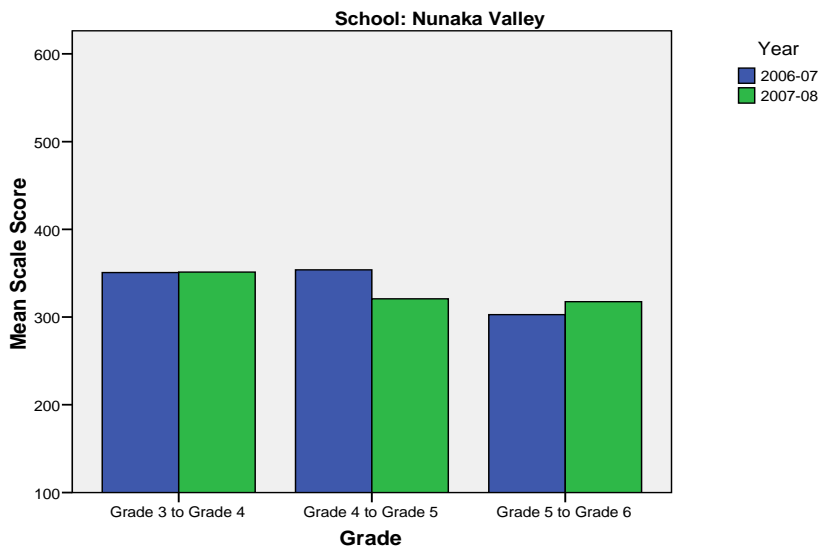
**Change in Mean Scale Score in SBA Reading by Grade Between 2006-07 and 2007-08**



Nunaka Valley Elementary School SBA Change Average Scale Score by NCLB Groups: Writing									
	Average Scale Score of Students Tested in District Both Years			Average Scale Score of Students Tested in District Both Years			Average Scale Score of Students Tested in District Both Years		
	Grade 3 in 06-07	Grade 4 in 07-08	Difference	Grade 4- in 06-07	Grade 5 in 07-08	Difference	Grade 5- in 06-07	Grade 6 in 07-08	Difference
All Students	350.80	351.35	0.55	353.82	320.91	-32.91	302.74	317.52	14.78
AF AM	*	*	*	*	*	*	*	*	*
AKNA/AI	333.71	336.71	3.00	348.60	309.40	-39.20	290.44	311.33	20.89
Asian	*	*	*	*	*	*	*	*	*
NH/OPI	*	*	*	*	*	*	*	*	*
White	329.60	317.80	-11.80	358.73	341.87	-16.87	304.00	346.20	42.20
Hispanic	*	*	*	*	*	*	*	*	*
ME	*	*	*	*	*	*	*	*	*
EDS	356.33	348.87	-7.47	354.54	324.38	-30.17	308.87	318.87	10.00
Non-EDS	334.20	358.80	24.60	352.10	312.60	-39.50	291.25	315.00	23.75
SWD	*	*	*	249.60	204.00	-45.60	275.14	257.43	-17.71
Non-SWD	371.59	370.59	-1.00	371.79	341.07	-30.72	314.81	343.81	29.00
LEP	*	*	*	*	*	*	*	*	*
Not LEP	361.06	364.78	3.72	353.82	320.91	-32.91	310.53	322.16	11.63
Migrant	*	*	*	*	*	*	268.60	256.80	-11.80
Not Migrant	357.56	360.89	3.33	356.94	321.81	-35.13	312.22	334.39	22.17
Female	359.00	375.75	16.75	379.67	361.00	-18.67	309.75	334.17	24.42
Male	345.33	335.08	-10.25	312.08	256.15	-55.92	295.09	299.36	4.27

\* Results cannot be published without releasing personally identifiable information based upon the EED reporting protocol

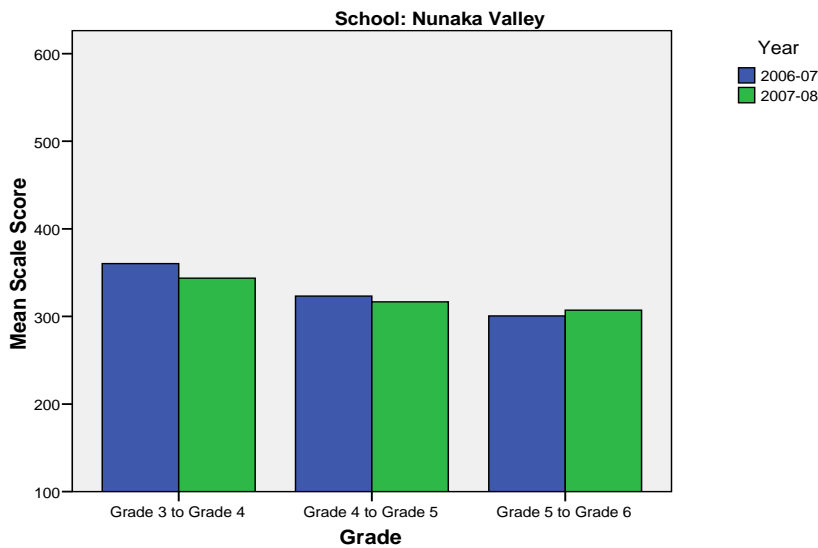
**Change in Mean Scale Score in SBA Writing by Grade between 2006-07 and 2007-08**



Nunaka Valley Elementary School SBA Change Average Scale Score by NCLB Groups: Mathematics									
	Average Scale Score of Students Tested in District Both Years			Average Scale Score of Students Tested in District Both Years			Average Scale Score of Students Tested in District Both Years		
	Grade 3 in 06-07	Grade 4 in 07-08	Difference	Grade 4- in 06-07	Grade 5 in 07-08	Difference	Grade 5- in 06-07	Grade 6 in 07-08	Difference
All Students	360.32	343.79	-16.53	323.26	316.71	-6.56	300.48	307.13	6.65
AF AM	*	*	*	*	*	*	*	*	*
AKNA/AI	368.29	317.57	-50.71	322.10	316.00	-6.10	293.11	294.11	1.00
Asian	*	*	*	*	*	*	*	*	*
NH/OPI	*	*	*	*	*	*	*	*	*
White	308.20	317.40	9.20	324.53	327.60	3.07	286.20	316.40	30.20
Hispanic	*	*	*	*	*	*	*	*	*
ME	*	*	*	*	*	*	*	*	*
EDS	349.33	340.60	-8.73	324.46	328.79	4.33	310.40	311.80	1.40
Non-EDS	*	*	*	320.40	287.70	-32.70	281.88	298.38	16.50
SWD	*	*	*	243.80	244.60	0.80	261.00	271.00	10.00
Non-SWD	382.00	367.31	-14.69	336.97	329.14	-7.83	317.75	322.94	5.19
LEP	*	*	*	*	*	*	*	*	*
Not LEP	373.94	353.65	-20.29	323.26	316.71	-6.56	305.84	312.00	6.16
Migrant	*	*	*	*	*	*	275.20	265.40	-9.80
Not Migrant	367.29	350.82	-16.47	324.78	319.28	-5.50	307.50	318.72	11.22
Female	359.57	358.71	-0.86	335.57	340.24	4.67	290.00	307.58	17.58
Male	360.75	335.08	-25.67	303.38	278.69	-24.69	311.91	306.64	-5.27

\* Results cannot be published without releasing personally identifiable information based upon the EED reporting protocol

**Change in Mean Scale Score in SBA Mathematics by Grade between 2006-07 and 2007-08**



Reading: SBA Results Compared for Nunaka Valley Elementary School, District and State Grades 3 Through 6															
	% Advanced Proficient			% Proficient			% Below Proficient			% Far Below Proficient			% Tested		
	School	District	State	School	District	State	School	District	State	School	District	State	School	District	State
All Students	21.57%	39.70%	35.67%	51.96%	43.89%	45.50%	14.71%	11.60%	13.02%	11.76%	4.80%	5.80%	81.60%	98.15%	97.98%
AF AM	*	20.73%	22.99%	*	54.18%	53.49%	*	17.79%	16.46%	*	7.30%	7.06%	83.33%	98.04%	97.49%
AKNA/AI	14.81%	20.23%	14.62%	59.26%	51.11%	48.17%	11.11%	18.54%	24.83%	14.81%	10.11%	12.37%	77.14%	96.88%	97.59%
Asian	*	30.22%	28.26%	75.00%	48.71%	51.04%	*	15.32%	15.32%	*	5.75%	5.38%	88.89%	97.64%	97.67%
NH/OPI	*	14.67%	N/A	*	51.03%	N/A	*	24.59%	N/A	*	9.71%	N/A	100.00%	98.98%	N/A
White	21.88%	52.75%	47.28%	53.13%	38.06%	42.41%	15.63%	6.69%	7.27%	9.38%	2.50%	3.03%	84.21%	98.68%	98.28%
Hispanic	40.00%	32.35%	31.74%	50.00%	46.43%	48.60%	*	14.67%	13.66%	*	6.55%	6.00%	71.43%	97.14%	97.32%
ME	*	33.26%	34.76%	*	48.25%	47.75%	28.57%	13.47%	12.80%	21.43%	5.01%	4.70%	82.35%	98.15%	98.03%
EDS	20.83%	22.85%	21.47%	52.78%	49.71%	48.65%	11.11%	19.04%	20.31%	15.28%	8.40%	9.57%	83.72%	97.50%	96.44%
Not EDS	23.33%	51.44%	46.31%	50.00%	39.84%	43.15%	*	6.42%	7.56%	*	2.30%	2.98%	76.92%	98.61%	99.16%
SWD	*	10.08%	9.29%	*	37.10%	37.96%	36.36%	32.15%	31.20%	50.00%	20.67%	21.55%	91.67%	94.28%	93.60%
Non-SWD	27.50%	45.02%	40.09%	62.50%	45.12%	46.77%	*	7.91%	9.98%	*	1.95%	3.17%	79.21%	98.88%	98.75%
LEP	*	4.97%	3.12%	*	39.93%	38.06%	*	37.14%	38.40%	*	17.96%	20.42%	87.50%	94.25%	96.11%
Not LEP	22.11%	42.78%	39.95%	53.68%	44.25%	46.48%	13.68%	9.33%	9.68%	10.53%	3.64%	3.88%	81.20%	98.51%	98.23%
Migrant	*	27.01%	17.29%	36.36%	50.34%	48.58%	36.36%	16.44%	23.78%	*	6.21%	10.35%	91.67%	98.35%	98.50%
Not Migrant	23.08%	40.26%	36.97%	53.85%	43.61%	45.29%	12.09%	11.38%	12.26%	10.99%	4.74%	5.48%	80.53%	98.14%	97.94%
Female	22.64%	44.40%	39.45%	62.26%	43.41%	45.33%	9.43%	8.75%	10.85%	5.66%	3.44%	4.37%	80.30%	98.39%	98.31%
Male	20.41%	35.15%	32.09%	40.82%	44.37%	45.67%	20.41%	14.36%	15.08%	18.37%	6.13%	7.16%	83.05%	97.92%	97.66%

\* Results cannot be published without releasing personally identifiable information based upon the EED reporting protocol

Writing: SBA Results Compared for Nunaka Valley Elementary School, District and State Grades 3 Through 6															
	% Advanced Proficient			% Proficient			% Below Proficient			% Far Below Proficient			% Tested		
	School	District	State	School	District	State	School	District	State	School	District	State	School	District	State
All Students	17.65%	34.87%	30.49%	45.10%	44.25%	44.50%	32.35%	18.78%	22.32%	4.90%	2.10%	2.69%	81.60%	98.11%	97.96%
AF AM	*	20.71%	20.51%	*	46.71%	48.68%	*	28.71%	27.18%	*	3.88%	3.63%	83.33%	98.15%	97.71%
AKNA/AI	11.11%	17.15%	12.11%	40.74%	45.31%	41.05%	*	33.38%	40.69%	*	4.15%	6.15%	77.14%	96.51%	97.64%
Asian	*	30.17%	28.49%	62.50%	45.92%	45.93%	*	21.33%	23.31%	*	2.58%	2.27%	88.89%	97.56%	97.67%
NH/OPI	*	14.02%	N/A	50.00%	42.89%	N/A	*	39.38%	N/A	*	3.71%	N/A	100.00%	99.18%	N/A
White	21.88%	45.85%	40.04%	46.88%	41.91%	44.71%	*	11.26%	13.97%	*	0.99%	1.28%	84.21%	98.66%	98.22%
Hispanic	*	27.33%	27.00%	60.00%	47.25%	48.36%	30.00%	22.54%	22.23%	*	2.88%	2.41%	71.43%	97.07%	97.36%
ME	*	28.51%	29.14%	35.71%	47.68%	47.29%	35.71%	21.31%	21.37%	*	2.51%	2.20%	82.35%	98.15%	97.96%
EDS	18.06%	18.92%	17.53%	41.67%	47.34%	45.15%	36.11%	29.95%	32.95%	4.17%	3.79%	4.37%	83.72%	97.50%	96.53%
Not EDS	16.67%	45.99%	40.21%	53.33%	42.10%	44.01%	*	10.99%	14.35%	*	0.92%	1.44%	76.92%	98.54%	99.06%
SWD	*	7.09%	6.94%	*	38.82%	37.02%	68.18%	45.96%	47.34%	18.18%	8.12%	8.69%	91.67%	94.28%	93.97%
Non-SWD	22.50%	39.86%	34.45%	53.75%	45.23%	45.76%	*	13.89%	18.11%	*	1.02%	1.69%	79.21%	98.83%	98.66%
LEP	*	4.71%	3.14%	*	37.05%	30.66%	42.86%	50.57%	56.76%	*	7.67%	9.44%	87.50%	94.25%	96.18%
Not LEP	17.89%	37.55%	34.08%	46.32%	44.89%	46.32%	31.58%	15.96%	17.79%	4.21%	1.60%	1.81%	81.20%	98.47%	98.20%
Migrant	*	21.44%	14.20%	36.36%	48.58%	42.55%	45.45%	26.63%	38.57%	*	3.35%	4.68%	91.67%	98.51%	98.58%
Not Migrant	19.78%	35.46%	31.63%	46.15%	44.06%	44.64%	30.77%	18.43%	21.18%	3.30%	2.04%	2.55%	80.53%	98.09%	97.92%
Female	20.75%	42.63%	37.48%	54.72%	42.50%	43.42%	*	13.62%	17.40%	*	1.26%	1.70%	80.30%	98.32%	98.22%
Male	14.29%	27.36%	23.87%	34.69%	45.96%	45.52%	42.86%	23.78%	26.98%	8.16%	2.91%	3.63%	83.05%	97.90%	97.72%

\* Results cannot be published without releasing personally identifiable information based upon the EED reporting protocol

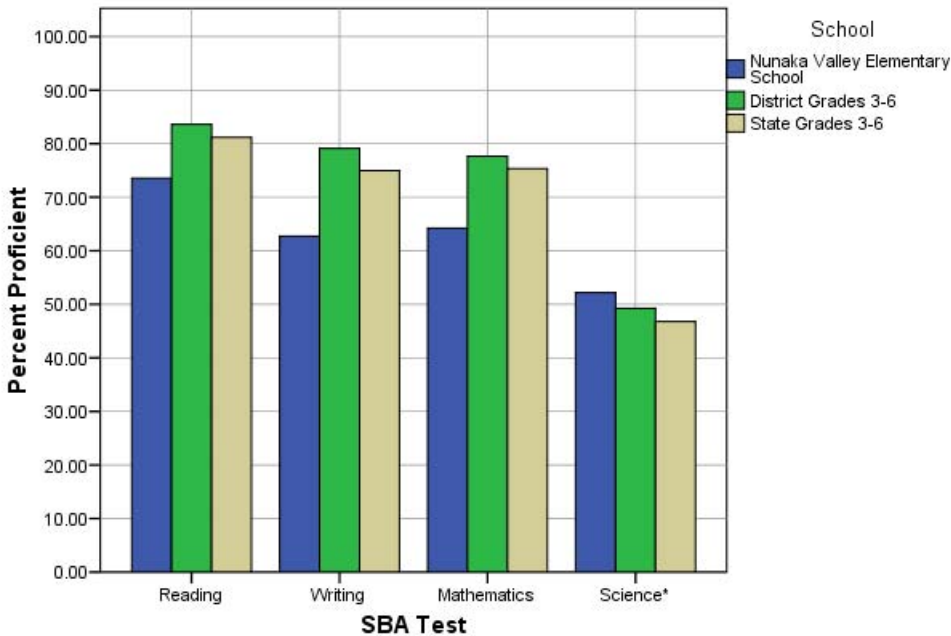
Mathematics: SBA Results Compared for Nunaka Valley Elementary School, District and State Grades 3 Through 6															
	% Advanced Proficient			% Proficient			% Below Proficient			% Far Below Proficient			% Tested		
	School	District	State	School	District	State	School	District	State	School	District	State	School	District	State
All Students	21.95%	39.81%	36.08%	42.28%	37.84%	39.26%	21.14%	12.46%	13.78%	14.63%	9.88%	10.88%	98.40%	98.52%	98.12%
AF AM	*	19.48%	22.09%	*	40.14%	41.60%	*	20.19%	18.61%	*	20.19%	17.70%	100.00%	98.38%	97.78%
AKNA/AI	17.65%	23.20%	18.26%	35.29%	39.51%	39.14%	32.35%	19.22%	21.79%	14.71%	18.07%	20.81%	97.14%	96.96%	97.72%
Asian	*	37.02%	34.29%	66.67%	41.20%	41.23%	*	13.76%	14.10%	*	8.03%	10.38%	100.00%	99.27%	98.99%
NH/OPI	*	18.52%	N/A	*	38.07%	N/A	*	20.16%	N/A	*	23.25%	N/A	100.00%	99.39%	N/A
White	24.32%	51.12%	45.75%	37.84%	35.15%	38.35%	24.32%	8.41%	9.81%	13.51%	5.32%	6.09%	97.37%	98.69%	98.17%
Hispanic	28.57%	31.85%	31.11%	64.29%	40.04%	42.19%	*	15.02%	15.10%	*	13.09%	11.60%	100.00%	98.66%	98.47%
ME	17.65%	33.75%	35.45%	41.18%	41.21%	40.61%	*	13.93%	13.30%	*	11.11%	10.64%	100.00%	98.26%	98.00%
EDS	23.26%	24.26%	23.31%	40.70%	41.50%	40.98%	18.60%	17.54%	18.60%	17.44%	16.70%	17.11%	100.00%	98.14%	96.77%
Not EDS	18.92%	50.70%	45.67%	45.95%	35.28%	37.96%	27.03%	8.91%	10.16%	8.11%	5.12%	6.21%	94.87%	98.79%	99.16%
SWD	*	12.52%	12.06%	*	31.53%	32.14%	31.82%	23.68%	23.60%	50.00%	32.27%	32.20%	91.67%	94.19%	93.99%
Non-SWD	26.73%	44.69%	40.12%	47.52%	38.97%	40.45%	18.81%	10.46%	12.13%	6.93%	5.88%	7.30%	100.00%	99.34%	98.85%
LEP	*	8.22%	6.05%	37.50%	36.74%	34.10%	*	24.50%	27.43%	37.50%	30.54%	32.42%	100.00%	97.95%	97.56%
Not LEP	22.61%	42.73%	40.09%	42.61%	37.94%	39.95%	21.74%	11.35%	11.96%	13.04%	7.98%	8.01%	98.29%	98.57%	98.19%
Migrant	*	30.94%	22.37%	*	43.65%	40.27%	25.00%	14.21%	20.36%	41.67%	11.20%	17.00%	100.00%	98.68%	98.54%
Not Migrant	23.42%	40.21%	37.05%	44.14%	37.58%	39.19%	20.72%	12.38%	13.31%	11.71%	9.83%	10.45%	98.23%	98.51%	98.09%
Female	20.00%	41.01%	36.83%	46.15%	38.32%	39.88%	20.00%	11.59%	13.34%	13.85%	9.09%	9.96%	98.48%	98.71%	98.31%
Male	24.14%	38.66%	35.38%	37.93%	37.38%	38.67%	22.41%	13.30%	14.20%	15.52%	10.66%	11.75%	98.31%	98.34%	97.94%

\* Results cannot be published without releasing personally identifiable information based upon the EED reporting protocol

Science: SBA Results Compared for Nunaka Valley Elementary School, District and State Grade 4															
	% Advanced Proficient			% Proficient			% Below Proficient			% Far Below Proficient			% Tested		
	School	District	State	School	District	State	School	District	State	School	District	State	School	District	State
All Students	21.74%	23.68%	22.1%	30.43%	25.57%	24.7%	21.74%	31.70%	31.3%	26.09%	19.06%	21.9%	95.83%	97.81%	95.35%
AF AM	*	9.18%	8.9%	*	18.84%	23.3%	*	39.13%	38.0%	*	32.85%	29.8%	100.00%	98.57%	94.49%
AKNA/AI	*	6.54%	6.8%	*	21.50%	14.2%	*	42.99%	35.2%	*	28.97%	43.8%	100.00%	96.40%	94.98%
Asian	*	10.18%	13.4%	*	21.40%	19.4%	*	39.30%	37.5%	*	29.12%	29.7%	100.00%	98.28%	97.39%
NH/OPI	*	6.57%	N/A	*	8.03%	N/A	*	34.31%	N/A	*	51.09%	N/A	100.00%	98.56%	N/A
White	*	36.40%	32.3%	*	29.08%	29.9%	*	25.33%	27.3%	*	9.19%	10.5%	85.71%	97.87%	94.97%
Hispanic	*	16.17%	18.2%	*	26.15%	26.0%	*	32.08%	33.9%	*	25.61%	21.9%	100.00%	97.12%	96.39%
ME	*	16.06%	18.5%	*	26.12%	26.8%	*	37.47%	35.9%	*	20.34%	18.7%	100.00%	98.32%	96.90%
EDS	22.22%	8.34%	11.0%	38.89%	22.44%	20.1%	*	38.10%	34.7%	*	31.12%	34.2%	100.00%	97.73%	94.99%
Not EDS	*	35.00%	31.2%	*	27.88%	28.5%	80.00%	26.97%	28.5%	*	10.15%	11.9%	83.33%	97.87%	95.64%
SWD	*	8.38%	7.7%	*	16.38%	15.2%	*	36.57%	36.6%	*	38.67%	40.5%	75.00%	93.25%	91.70%
Non-SWD	25.00%	26.43%	24.7%	35.00%	27.22%	26.4%	25.00%	30.82%	30.4%	15.00%	15.53%	18.5%	100.00%	98.68%	96.04%
LEP	*	2.00%	1.5%	*	5.14%	3.8%	*	34.00%	28.3%	*	58.86%	66.5%	100.00%	96.15%	95.67%
Not LEP	20.00%	26.13%	25.2%	35.00%	27.88%	27.9%	25.00%	31.44%	31.8%	20.00%	14.55%	15.1%	95.24%	98.00%	95.30%
Migrant	*	9.70%	9.0%	*	26.87%	15.3%	*	39.55%	34.3%	*	23.88%	41.4%	100.00%	97.10%	97.32%
Not Migrant	23.81%	24.24%	23.0%	28.57%	25.51%	25.3%	23.81%	31.38%	31.1%	23.81%	18.86%	20.5%	95.45%	97.84%	95.21%
Female	*	22.73%	20.8%	*	25.78%	25.2%	33.33%	33.63%	32.6%	33.33%	17.87%	21.4%	90.00%	98.05%	95.43%
Male	28.57%	24.61%	23.4%	35.71%	25.36%	24.2%	*	29.80%	30.1%	*	20.23%	22.3%	100.00%	97.58%	95.27%

\* Results cannot be published without releasing personally identifiable information based upon the EED reporting protocol

2007-08 SBA Results Compared for Nunaka Valley Elementary School, District and State

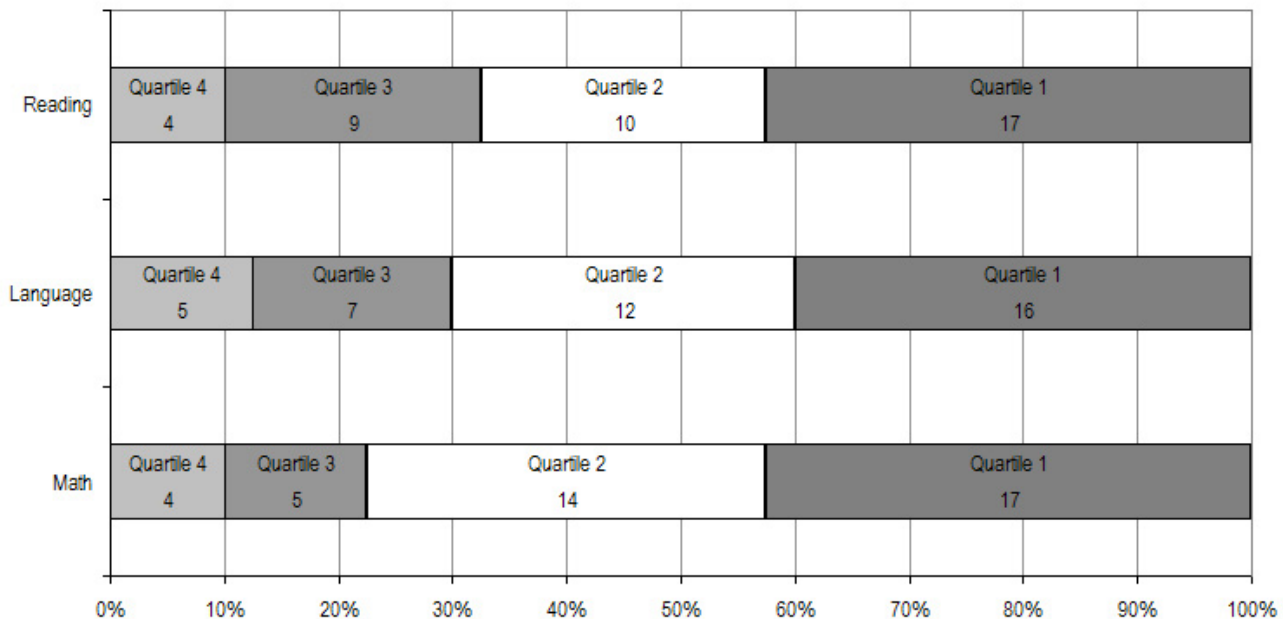


\* 2007-08 was the first year Science was administered for grades 4, 8 and 10 on the SBA.

Nunaka Valley Elementary School TerraNova Grade 5 Percent in Each Quartile								
Reading	Above Average		Average				Below Average	
	4th Quartile (76-99 percentile)		3rd Quartile (51-75 percentile)		2nd Quartile (26-50 percentile)		1st Quartile (1-25 percentile)	
	School	District	School	District	School	District	School	District
07-08	10.00%	25.65%	22.50%	24.08%	25.00%	23.73%	42.50%	26.55%
06-07	13.3%	33.1%	13.3%	26.1%	40.0%	23.6%	33.3%	17.2%
05-06	13.9%	30.4%	13.9%	26.8%	33.3%	24.5%	38.9%	18.3%
04-05	22.5%	29.2%	17.5%	27.6%	35.0%	24.5%	25.0%	18.7%
03-04	17.1%	30.6%	20.0%	26.9%	34.3%	24.2%	28.6%	18.3%
<b>Language</b>								
07-08	12.50%	26.79%	17.50%	27.20%	30.00%	24.12%	40.00%	21.89%
06-07	6.7%	34.7%	30.0%	26.9%	43.3%	21.4%	20.0%	17.0%
05-06	13.9%	34.0%	25.0%	26.5%	25.0%	22.0%	36.1%	17.5%
04-05	27.5%	32.1%	17.5%	28.3%	32.5%	21.2%	22.5%	18.4%
03-04	17.1%	34.1%	22.9%	26.5%	31.4%	21.7%	28.6%	17.7%
<b>Mathematics</b>								
07-08	10.00%	25.45%	12.50%	26.40%	35.00%	24.47%	42.50%	23.68%
06-07	3.3%	29.7%	26.7%	31.6%	33.3%	21.2%	36.7%	17.4%
05-06	2.8%	28.4%	27.8%	31.9%	22.2%	22.3%	47.2%	17.5%
04-05	12.5%	26.9%	22.5%	31.1%	32.5%	22.9%	32.5%	19.1%
03-04	20.0%	28.3%	14.3%	29.3%	34.3%	22.6%	31.4%	19.8%

The double bold line indicates a change from the TerraNova 2<sup>nd</sup> edition to the TerraNova 3<sup>rd</sup> edition.

2007-08 TerraNova 3rd Edition Grade 5 Percent and Count of Students in Each Quartile For Nunaka Valley Elementary School



**Climate Survey Results for Nunaka Valley Elementary School**

The Anchorage School District administered the School Climate and Connectedness Surveys in spring 2008 to students in grades 5-12, all school staff and parents/guardians of students in grades K-12. The surveys were done to provide schools with information about perceptions and experiences related to school climate for use in setting school goals and redirecting resources. In the spring of 2008 grades 3 and 4 students were involved in a pilot survey for measuring school climate and connectedness. The results are currently under review by the American Institutes for Research.

Respondents were asked to answer a series of questions that were related to a certain concept. For each item, there were five options from which to choose a response. The answer options ranged from strongly disagree (1) to strongly agree (5).

Student Survey Response Rate Grades 5-12			
	Nunaka Valley Elementary School	Overall Elementary Schools	District**
# Surveys Completed	59	5,579	21,629
# Reportable Surveys	53	4,969	18,654
# Students Enrolled*	64	6,331	28,945
Reportable Response Rate	82.81%	78.49%	64.45%

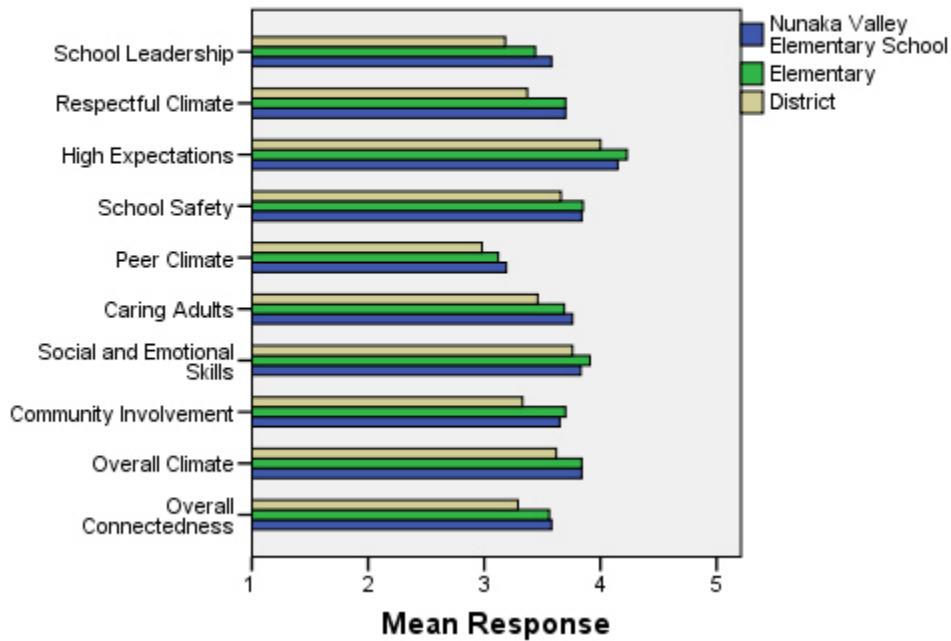
\*Number enrolled as of April 1, 2008

\*\*District data does not include KCC responses

Each question in the survey related to a factor or concept, and a score was calculated based on the mean response for the questions related to each factor. The factors measured in the survey were:

- **School Leadership and Student Involvement:** This factor reflects students' feelings about the decision making of school leaders as well as student participation in the school governance. Students selected responses between 1 and 5 where 1 indicates a low level of school leadership and student involvement and 5 indicates a high level of school leadership and student involvement.
- **Respectful Climate:** This factor reflects students' feelings about fairness of rules and respect for students' contributions. Students selected responses between 1 and 5 where 1 indicates a lack of a respectful climate and 5 indicates a highly respectful climate for students.
- **High Expectations:** This factor reflects students' feelings about their own expectations as well as those of adults in their school and community. Students selected responses between 1 and 5 where 1 indicates a lack of high expectations and 5 indicates a high level of high expectations.
- **School Safety:** This factor reflects students' feelings about bullies and gangs at school as well as general crime and violence in the community. Students selected responses between 1 and 5 where 1 indicates a low level of school safety and 5 indicates a high level of school safety.
- **Peer Climate:** This factor reflects students' feelings about how respectful students are to one another and how helpful students are to other students. Students selected responses between 1 and 5 where 1 indicates a more negative peer climate and 5 indicates a very positive peer climate at the school.
- **Caring Adults:** This factor reflects students' feelings about how close they feel to adults in the school. Students selected responses between 1 and 5 where 1 indicates a lack of caring adult relationships and 5 indicates strong caring adult relationships at the school.
- **Social and Emotional Learning:** This factor reflects students' ability to think about the consequences of their actions and to empathize with others. Students selected responses between 1 and 5 where 1 indicates that students at the school perceive themselves as having poorer social and emotional learning, and 5 indicates higher levels of social and emotional learning.
- **Community Involvement:** This factor reflects students' feelings about how supportive and welcoming the school is with parents and the community. Students selected responses between 1 and 5 where 1 indicates a less supportive and welcoming environment and 5 indicates a more supportive and welcoming environment.
- **Overall Climate:** The overall climate score was computed as the mean of three scales: school leadership, high expectations and school safety.
- **Overall Connectedness:** Overall connectedness score was computed as a mean of three scales: respectful climate, peer climate and caring adults.

### Climate and Connectedness Student Survey - Nunaka Valley



Student Survey Mean Response by Factors Related to School Climate - Overall District			
	Nunaka Valley Elementary School	Overall Elementary Schools	District
School Leadership	3.58	3.44	3.18
Respectful Climate	3.70	3.70	3.37
High Expectations	4.15	4.23	4.00
School Safety	3.84	3.85	3.66
Peer Climate	3.19	3.12	2.98
Caring Adults	3.76	3.69	3.46
Social and Emotional Skills	3.83	3.91	3.76
Community Involvement	3.65	3.70	3.33
Overall Climate	3.84	3.84	3.62
Overall Connectedness	3.58	3.56	3.29

Range is from a low of 1 to a high of 5

Students were also asked to answer questions related to school danger. The following table provides the responses for those questions:

Student Survey Results of the School Danger Questions - Percent of Students Responding in Each Category					
	0 Times	1-2 Times	3-6 Times	7-12 Times	> 12 Times
<b>Nunaka Valley Elementary School</b>					
Under the influence of drugs?	100.00%	0.00%	0.00%	0.00%	0.00%
Under the influence of alcohol?	96.23%	3.77%	0.00%	0.00%	0.00%
Destroy things (vandalism)?	56.60%	35.85%	3.77%	0.00%	3.77%
Get into fights?	26.42%	50.94%	18.87%	0.00%	3.77%
Steal things?	64.15%	22.64%	9.43%	1.89%	1.89%
Threaten or bully?	40.38%	51.92%	3.85%	1.92%	1.92%
Under the influence of inhalants?	79.25%	20.75%	0.00%	0.00%	0.00%
Carry weapons?	92.31%	7.69%	0.00%	0.00%	0.00%
<b>Overall Elementary Schools</b>					
Under the influence of drugs?	91.87%	5.65%	1.22%	0.31%	0.96%
Under the influence of alcohol?	91.42%	6.01%	1.16%	0.51%	0.90%
Destroy things (vandalism)?	46.82%	32.08%	12.45%	3.30%	5.36%
Get into fights?	22.32%	35.75%	22.56%	7.96%	11.41%
Steal things?	49.79%	27.92%	12.01%	4.33%	5.95%
Threaten or bully?	32.34%	28.83%	17.08%	7.78%	13.97%
Under the influence of inhalants?	71.03%	17.07%	6.14%	2.63%	3.12%
Carry weapons?	79.22%	15.35%	3.17%	0.59%	1.68%
<b>District</b>					
Under the influence of drugs?	60.45%	15.05%	9.54%	3.92%	11.04%
Under the influence of alcohol?	63.11%	16.37%	8.90%	4.43%	7.19%
Destroy things (vandalism)?	41.26%	29.47%	15.45%	5.88%	7.94%
Get into fights?	26.40%	35.20%	21.96%	7.11%	9.33%
Steal things?	44.80%	25.68%	13.81%	6.98%	8.74%
Threaten or bully?	32.21%	26.21%	16.68%	9.27%	15.63%
Under the influence of inhalants?	72.79%	14.21%	5.66%	2.48%	4.87%
Carry weapons?	69.45%	19.15%	5.34%	2.01%	4.06%

Student Survey Results of the Mean Factor Score by Ethnicity (Self-Reported)							
	AKNA/AI	AF AM	Hispanic	Asian/NH	White	Other	Multi-Ethnic
<b>Nunaka Valley Elementary School</b>							
School Leadership	3.72	3.20	3.40	3.65	3.32	3.60	4.30
Respectful Climate	3.73	3.33	2.83	3.92	3.70	4.00	3.56
High Expectations	3.95	5.00	4.43	4.32	4.21	4.24	4.29
School Safety	3.86	4.80	3.10	3.45	4.00	3.00	4.33
Peer Climate	3.37	2.20	3.10	3.20	3.00	3.27	3.07
Caring Adults	3.73	4.40	3.90	3.55	3.84	3.20	3.80
Social and Emotional Skills	3.82	3.93	3.77	4.25	3.71	3.93	3.62
Community Involvement	3.58	3.43	3.79	3.64	3.70	3.24	4.14
Overall Climate	3.83	4.33	3.81	3.81	3.81	3.61	4.31
Overall Connectedness	3.62	3.34	3.40	3.72	3.59	3.43	***
<b>Overall Elementary Schools</b>							
School Leadership	3.56	3.50	3.52	3.55	3.37	3.44	3.42
Respectful Climate	3.75	3.60	3.66	3.72	3.71	3.69	3.63
High Expectations	4.12	4.23	4.23	4.22	4.26	4.19	4.25
School Safety	3.75	3.63	3.73	3.68	4.03	3.66	3.79
Peer Climate	3.12	2.94	3.12	3.18	3.16	3.05	3.05
Caring Adults	3.64	3.73	3.64	3.59	3.74	3.60	3.76
Social and Emotional Skills	3.86	3.84	3.91	3.95	3.93	3.90	3.89
Community Involvement	3.66	3.60	3.67	3.66	3.75	3.66	3.70
Overall Climate	3.81	3.79	3.84	3.81	3.89	3.76	3.82
Overall Connectedness	3.56	3.49	3.51	3.53	3.60	3.49	3.56
<b>District</b>							
School Leadership	3.33	3.14	3.19	3.28	3.14	3.17	3.15
Respectful Climate	3.48	3.18	3.32	3.39	3.39	3.37	3.33
High Expectations	3.98	3.94	3.96	4.02	4.02	4.00	4.01
School Safety	3.60	3.48	3.55	3.47	3.78	3.51	3.62
Peer Climate	3.01	2.85	2.94	3.05	3.00	2.92	2.93
Caring Adults	3.49	3.43	3.37	3.33	3.51	3.42	3.46
Social and Emotional Skills	3.73	3.66	3.73	3.81	3.78	3.75	3.74
Community Involvement	3.37	3.22	3.31	3.29	3.34	3.34	3.31
Overall Climate	3.64	3.52	3.57	3.59	3.65	3.56	3.60
Overall Connectedness	3.33	3.17	3.24	3.26	3.31	3.26	3.27

\*\*\*Results can not be calculated because of missing responses

The response rate is not high enough to provide statistically reliable results for Nunaka Elementary School's Staff Survey Results.

The response rate is not high enough to provide statistically reliable results for Nunaka Elementary School's Parent/Guardian Survey Results.