

### O'Malley Elementary School Overview

#### Statement of Program

O'Malley Elementary is K-6 school where parent participation is a major component. Cooperative efforts among teachers, students and parents help provide a program that promotes personal responsibility, develops useful study and work habits and emphasizes student mastery of language arts and math.

The staff uses a variety of instructional approaches, resources and personnel to maximize student learning in the most effective manner. O'Malley Elementary is a safe, positive, and caring community that is dedicated to high academic and behavioral standards. The staff works closely with parents and the community to provide a learning environment where students experience academic and interpersonal success through self-discipline and positive decision-making.

From the School Report Card

School Goals	
Goal	Level of Achievement
The number of students with disabilities rated not proficient on the state language arts assessment will decrease by at least 10 percent.	Not Attained
Student performance in math will improve as determined by scores on the state math assessment, formal and informal classroom assessments, and curriculum-based assessments given in the spring.	Partially Attained
Kelso's Choice will continue to be the choice for students as a positive behavior plan. ASD curriculum and related strategies will help reinforce a positive and consistent schoolwide discipline program.	Attained

From the School Report Card

Budget*	
2006-07 Actual Expenditures	\$1,935,807
2007-08 Revised Budgeted Amount	\$2,096,267
2008-09 Proposed Budget	\$2,007,876

\*Dollars budgeted or expended are general fund only  
From IFAS

O'Malley Elementary School Characteristics			
	School	District	Source of Information
Membership	303	48,858	Fall OASIS
Capacity	66.74%	N/A	2008-18 ASD Capital Improvement Plan
Attendance Rate	94.56%	92.83%	NCLB Summer Data Collection
Retention Rate K-8	0.00%	0.60%	SMS and NCLB Summer Data Collection
Transiency Rate	15.93%	26.07%	NCLB Summer Data Collection
Economically Disadvantaged	38	17,717	Fall OASIS
Average Weekly Volunteer Hours	120	4,660	Department of Education Report Card Report
Students Taking the Alternate Assessment	0	228	SMS
Change in Enrollment	-4.11%	-0.76%	Fall Oasis

Teacher Qualification				
Number of Teachers	Percent Fully Licensed	Percent With Advanced Degrees	Number Nationally Board Certified	Percent of Classes Taught by "Highly Qualified Teachers"
30	100.00%	43.33%	0	95.83%

O'Malley Elementary School Business Partnerships
Sam's Club; AFD Fire Station #8

From the School Report Card

Ethnicity Report							
African-American/Black	Alaska Native/American Indian	Asian	Native Hawaiian/Other Pacific Islander	White	Hispanic	Multi-Ethnic	Total
5	13	4	0	243	17	21	303

From Fall Oasis

Full Academic Year		
Students Enrolled	Students Enrolled for FAY	Percent FAY
324	295	91.05%

From participation file (Grades 3-10)

O'Malley Elementary School  
 2007-08 Adequate Yearly Progress  
 Status Report

Meets AYP

AMO For Language Arts: 77.18%  
 AMO For Mathematics: 66.09%

Group	Participation Rate				"FAY" (D) Tested & Enrolled "FAY"	Language Arts Performance				Mathematics Performance			
	(A) Number Enrolled	(B) Number Tested	Participation Rate (%)	(C) Participation Rate Met		(E) Proficient on LA	(F) Percent Proficient on LA	(G) LA Target	(H) Met AMO for LA	(I) Proficient on Mathematics	(J) Percent Proficient in Mathematics	(K) Mathematics Target	(L) Met AMO for Mathematics
All Students	207	206	99.5%	Yes	196	184	93.9%	70.2%	Yes	178	90.8%	58.2%	Yes
AF AM	5	5	N/A	N/A	N/A	N/A	N/A	N/A	N/A	N/A	N/A	N/A	N/A
AKNA/AI	8	8	N/A	N/A	N/A	N/A	N/A	N/A	N/A	N/A	N/A	N/A	N/A
Asian/NH/OPI	<5	<5	N/A	N/A	N/A	N/A	N/A	N/A	N/A	N/A	N/A	N/A	N/A
White	165	164	99.4%	Yes	155	149	96.1%	69.3%	Yes	142	91.6%	57.2%	Yes
Hispanic	12	12	N/A	N/A	N/A	N/A	N/A	N/A	N/A	N/A	N/A	N/A	N/A
ME	14	14	N/A	N/A	N/A	N/A	N/A	N/A	N/A	N/A	N/A	N/A	N/A
EDS	27	27	100%	Yes	26	20	76.9%	58%	Yes	17	65.4%	44.5%	Yes
SWD	53	52	98.1%	Yes	51	43	84.3%	63.5%	Yes	36	70.6%	50.6%	Yes
LEP	9	9	N/A	N/A	N/A	N/A	N/A	N/A	N/A	N/A	N/A	N/A	N/A

Attendance Rate: Met

94.6% (Threshold is 85%)

N/A is used to indicate:

(1) Subgroups with 20 or fewer students enrolled on the first day of testing shall not be included in participation rate calculation.

(2) Subgroups with 25 or fewer students enrolled for the "full academic year" shall not have the performance score computed.

\* For the groups where the number enrolled is less than or equal to 40, participation is met when no more than two miss the test. Groups can also meet this target using the average of the past two or three years.

\*\* When a group achieves a "Yes" without meeting the listed target, it has done so using either the 99% confidence interval or Safe Harbor.

\*\*\* The results cannot be published without releasing personally identifiable information based upon the EED reporting protocol.

This document was prepared by the ASD Assessment and Evaluation Department.

7/10/2008

O'Malley Elementary School  
2007-08 Adequate Yearly Progress  
Growth Report

The AYP growth reports are generated by the Alaska State Department of Education and Early Development. The reports can be found online at: [http://www.asdk12.org/depts/assess\\_eval/AYP/State\\_AS\\_D\\_AYG\\_0708.pdf](http://www.asdk12.org/depts/assess_eval/AYP/State_AS_D_AYG_0708.pdf)

SBA Proficiency Comparison by Grade for O'Malley Elementary School																
	Reading Percent Proficient				Writing Percent Proficient				Mathematics Percent Proficient				Science* Percent Proficient			
	04-05	05-06	06-07	07-08	04-05	05-06	06-07	07-08	04-05	05-06	06-07	07-08	04-05	05-06	06-07	07-08
All Students	94.77%	92.05%	95.11%	94.66%	93.60%	89.77%	93.48%	90.29%	91.81%	89.20%	91.80%	90.78%	N/A	N/A	N/A	75.00%
Grade 3	95% or more	82.00%	95% or more	93.10%	95% or more	82.00%	95% or more	89.66%	95% or more	86.00%	95% or more	95% or more	N/A	N/A	N/A	N/A
Grade 4	95% or more	95% or more	90.00%	95% or more	95% or more	92.86%	92.00%	88.64%	95% or more	95% or more	83.67%	86.36%	N/A	N/A	N/A	75.00%
Grade 5	90.48%	92.68%	95% or more	91.84%	90.48%	87.80%	92.00%	87.76%	82.93%	85.37%	92.00%	87.76%	N/A	N/A	N/A	N/A
Grade 6	95% or more	95% or more	92.86%	95% or more	91.11%	95% or more	92.86%	94.55%	93.33%	88.37%	95% or more	90.91%	N/A	N/A	N/A	N/A

\* 2007-08 was the first year Science was administered for grades 4, 8 and 10 on the SBA.

SBA Proficient & Not Proficient by NCLB Groups for O'Malley Elementary School								
	Reading		Writing		Mathematics		Science**	
	Percent Proficient	Percent Not Proficient	Percent Proficient	Percent Not Proficient	Percent Proficient	Percent Not Proficient	Percent Proficient	Percent Not Proficient
All Students	94.66%	5.34%	90.29%	9.71%	90.78%	9.22%	75.00%	25.00%
AF AM	60% or more	40% or fewer	60% or more	40% or fewer	60% or more	40% or fewer	*	*
AKNA/AI	75% or more	25% or fewer	62.50%	37.50%	62.50%	37.50%	*	*
Asian	*	*	*	*	*	*	*	*
NH/OPI	*	*	*	*	*	*	*	*
White	96.34%	3.66%	92.07%	7.93%	91.46%	8.54%	73.68%	26.32%
Hispanic	80% or more	20% or fewer	75.00%	25.00%	80% or more	20% or fewer	*	*
ME	80% or more	20% or fewer	80% or more	20% or fewer	80% or more	20% or fewer	*	*
EDS	81.48%	18.52%	74.07%	25.93%	66.67%	33.33%	60% or fewer	40% or more
Non-EDS	96.65%	3.35%	92.74%	7.26%	94.41%	5.59%	82.05%	17.95%
SWD	79.49%	20.51%	64.10%	35.90%	58.97%	41.03%	30.00%	70.00%
Non-SWD	98.20%	1.80%	96.41%	3.59%	98.20%	1.80%	88.24%	11.76%
LEP	*	*	*	*	*	*	*	*
Not LEP	94.61%	5.39%	90.20%	9.80%	90.69%	9.31%	75.00%	25.00%
Migrant	*	*	*	*	*	*	*	*
Not Migrant	95.54%	4.46%	91.09%	8.91%	91.58%	8.42%	78.57%	21.43%
Female	94.00%	6.00%	92.00%	8.00%	93.00%	7.00%	65.22%	34.78%
Male	95.28%	4.72%	88.68%	11.32%	88.68%	11.32%	85.71%	14.29%

\* Results cannot be published without releasing personally identifiable information based upon the EED reporting protocol

\*\* 2007-08 was the first year Science was administered for grades 4, 8 and 10 on the SBA.

SBA Mean Scale Score Comparison by NCLB Groups for O'Malley Elementary School								
	Reading		Writing		Mathematics		Science***	
	06-07	07-08	06-07	07-08	06-07	07-08	06-07	07-08
All Students	412.82	417.76	411.52	412.02	398.96	397.63	N/A	344.14
AF AM	386.50	394.40	401.50	387.80	*	387.40	N/A	*
AKNA/AI	361.29	355.88	336.57	348.13	346.79	329.13	N/A	*
Asian**	*	*	*	*	*	*	N/A	*
NH/OPI**	N/A**	*	N/A**	*	N/A**	*	N/A	*
White	422.19	424.66	419.85	416.87	408.23	401.35	N/A	348.13
Hispanic	355.88	396.92	362.38	394.67	370.50	398.08	N/A	*
ME	424.83	400.14	443.94	411.57	406.67	393.29	N/A	*
EDS	366.24	368.33	370.14	362.78	350.71	342.41	N/A	263.40
Non-EDS	418.82	425.22	416.85	419.45	405.22	405.96	N/A	354.49
SWD	366.38	359.95	369.81	341.69	353.31	330.23	N/A	291.00
Non-SWD	426.55	431.26	423.86	428.44	412.56	413.37	N/A	359.76
LEP	374.90	*	375.60	*	371.20	*	N/A	*
Not LEP	414.99	418.52	413.59	412.97	400.57	398.38	N/A	344.14
Migrant	*	*	*	*	*	*	N/A	*
Not Migrant	414.12	419.68	412.30	413.78	399.64	399.30	N/A	348.81
Female	421.59	423.74	429.15	433.64	405.86	403.57	N/A	334.35
Male	404.77	412.12	395.36	391.62	392.71	392.03	N/A	354.86

\* Results cannot be published without releasing personally identifiable information based upon the EED reporting protocol

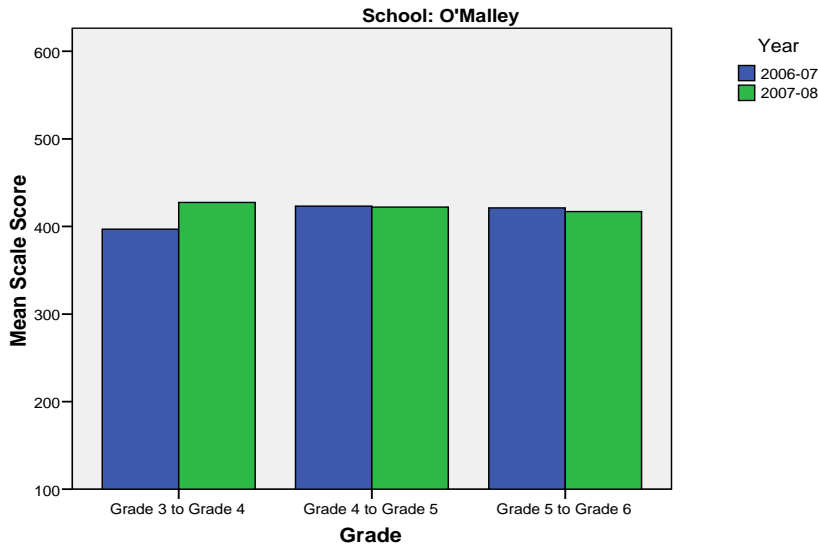
\*\* Prior to 2007-08 the Asian category includes Native Hawaiian/Other Pacific Islander. In 2007-08 Native Hawaiian/Other Pacific Islander is a separate ethnic category.

\*\*\* 2007-08 was the first year Science was administered for grades 4, 8 and 10 on the SBA.

O'Malley Elementary School SBA Change Average Scale Score by NCLB Groups: Reading									
	Average Scale Score of Students Tested in District Both Years			Average Scale Score of Students Tested in District Both Years			Average Scale Score of Students Tested in District Both Years		
	Grade 3 in 06-07	Grade 4 in 07-08	Difference	Grade 4-in 06-07	Grade 5 in 07-08	Difference	Grade 5-in 06-07	Grade 6 in 07-08	Difference
All Students	396.88	427.38	30.50	423.27	422.16	-1.11	421.32	417.06	-4.26
AF AM	*	*	*	*	*	*	*	*	*
AKNA/AI	*	*	*	*	*	*	*	*	*
Asian	*	*	*	*	*	*	*	*	*
NH/OPI	*	*	*	*	*	*	*	*	*
White	401.88	433.24	31.35	430.31	427.78	-2.53	430.67	424.31	-6.36
Hispanic	*	*	*	*	*	*	381.67	385.33	3.67
ME	*	*	*	*	*	*	*	*	*
EDS	335.00	348.80	13.80	*	*	*	368.25	367.50	-0.75
Non-EDS	405.71	438.60	32.89	427.00	427.00	0.00	431.43	426.50	-4.93
SWD	356.88	374.50	17.63	337.56	339.00	1.44	387.63	384.13	-3.50
Non-SWD	406.88	440.59	33.72	445.31	443.54	-1.77	427.74	423.33	-4.40
LEP	*	*	*	*	*	*	*	*	*
Not LEP	396.88	427.38	30.50	427.49	424.56	-2.93	423.22	418.18	-5.04
Migrant	*	*	*	*	*	*	*	*	*
Not Migrant	402.26	433.61	31.34	423.27	422.16	-1.11	421.32	417.06	-4.26
Female	407.95	444.95	37.00	440.67	430.86	-9.81	436.76	435.16	-1.60
Male	386.86	411.48	24.62	407.39	414.22	6.83	405.88	398.96	-6.92

\* Results cannot be published without releasing personally identifiable information based upon the EED reporting protocol

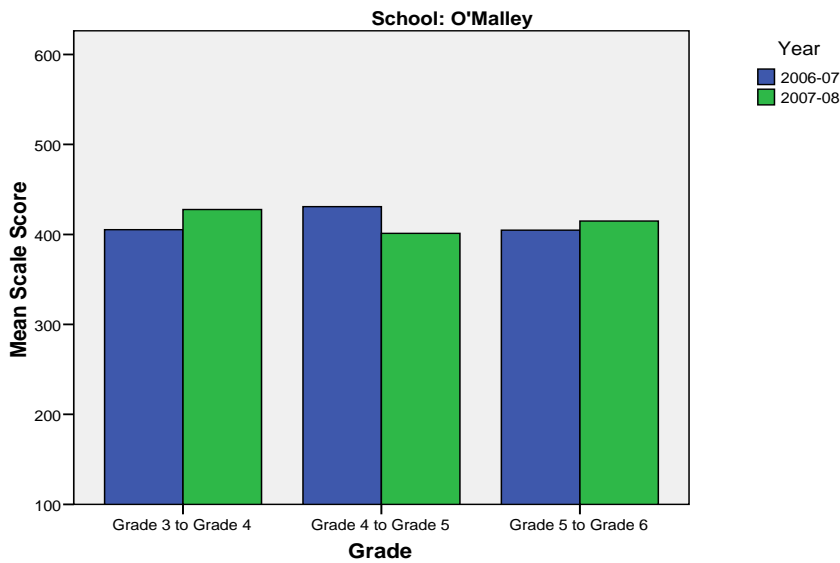
**Change in Mean Scale Score in SBA Reading by Grade Between 2006-07 and 2007-08**



O'Malley Elementary School SBA Change Average Scale Score by NCLB Groups: Writing									
	Average Scale Score of Students Tested in District Both Years			Average Scale Score of Students Tested in District Both Years			Average Scale Score of Students Tested in District Both Years		
	Grade 3 in 06-07	Grade 4 in 07-08	Difference	Grade 4- in 06-07	Grade 5 in 07-08	Difference	Grade 5- in 06-07	Grade 6 in 07-08	Difference
All Students	405.25	427.58	22.33	430.93	401.25	-29.68	404.60	414.86	10.26
AF AM	*	*	*	*	*	*	*	*	*
AKNA/AI	*	*	*	*	*	*	*	*	*
Asian	*	*	*	*	*	*	*	*	*
NH/OPI	*	*	*	*	*	*	*	*	*
White	408.62	428.94	20.32	438.89	403.72	-35.17	414.08	423.89	9.81
Hispanic	*	*	*	*	*	*	354.50	381.67	27.17
ME	*	*	*	*	*	*	*	*	*
EDS	328.20	357.20	29.00	*	*	*	370.25	356.75	-13.50
Non-EDS	416.26	437.63	21.37	436.17	405.74	-30.43	411.14	425.93	14.79
SWD	367.75	355.13	-12.63	338.44	313.44	-25.00	381.25	367.25	-14.00
Non-SWD	414.63	445.69	31.06	454.71	423.83	-30.89	409.05	423.93	14.88
LEP	*	*	*	*	*	*	*	*	*
Not LEP	405.25	427.58	22.33	435.05	403.56	-31.49	406.80	416.61	9.82
Migrant	*	*	*	*	*	*	*	*	*
Not Migrant	410.71	435.34	24.63	430.93	401.25	-29.68	404.60	414.86	10.26
Female	426.63	475.74	49.11	459.29	428.81	-30.48	420.92	437.48	16.56
Male	385.90	384.00	-1.90	405.04	376.09	-28.96	388.28	392.24	3.96

\* Results cannot be published without releasing personally identifiable information based upon the EED reporting protocol

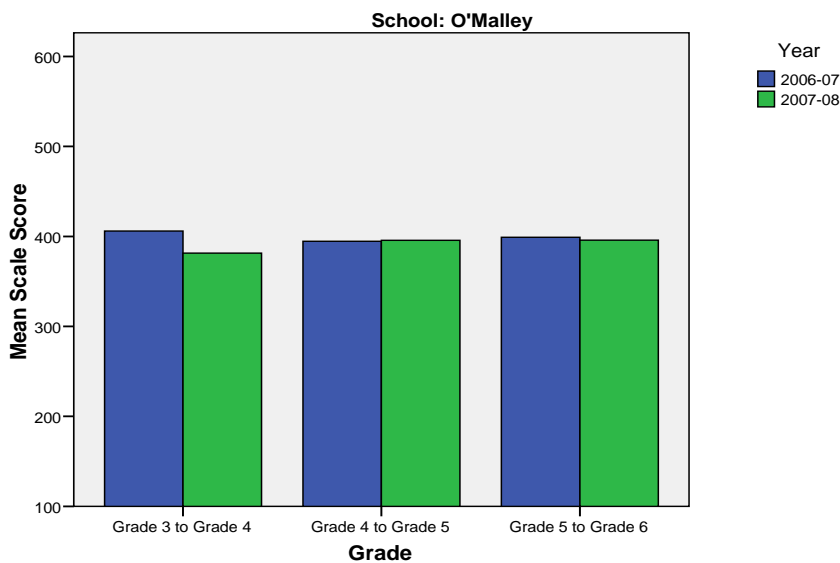
**Change in Mean Scale Score in SBA Writing by Grade between 2006-07 and 2007-08**



O'Malley Elementary School SBA Change Average Scale Score by NCLB Groups: Mathematics									
	Average Scale Score of Students Tested in District Both Years			Average Scale Score of Students Tested in District Both Years			Average Scale Score of Students Tested in District Both Years		
	Grade 3 in 06-07	Grade 4 in 07-08	Difference	Grade 4- in 06-07	Grade 5 in 07-08	Difference	Grade 5- in 06-07	Grade 6 in 07-08	Difference
All Students	405.90	381.50	-24.40	394.60	395.58	0.98	399.10	395.80	-3.30
AF AM	*	*	*	*	*	*	*	*	*
AKNA/AI	*	*	*	*	*	*	*	*	*
Asian	*	*	*	*	*	*	*	*	*
NH/OPI	*	*	*	*	*	*	*	*	*
White	405.74	386.09	-19.65	397.66	397.94	0.29	409.89	402.22	-7.67
Hispanic	*	*	*	*	*	*	385.67	388.17	2.50
ME	*	*	*	*	*	*	*	*	*
EDS	344.60	315.60	-29.00	*	*	*	332.50	323.00	-9.50
Non-EDS	414.66	390.91	-23.74	397.51	399.07	1.56	411.79	409.67	-2.12
SWD	350.00	317.50	-32.50	329.89	321.44	-8.44	331.88	337.25	5.38
Non-SWD	419.88	397.50	-22.38	411.74	415.21	3.47	411.90	406.95	-4.95
LEP	*	*	*	*	*	*	*	*	*
Not LEP	405.90	381.50	-24.40	397.07	397.40	0.33	400.92	397.27	-3.65
Migrant	*	*	*	*	*	*	*	*	*
Not Migrant	411.21	388.24	-22.97	394.60	395.58	0.98	399.10	395.80	-3.30
Female	418.53	399.63	-18.89	402.35	404.05	1.70	417.16	412.08	-5.08
Male	394.48	365.10	-29.38	387.87	388.22	0.35	381.04	379.52	-1.52

\* Results cannot be published without releasing personally identifiable information based upon the EED reporting protocol

**Change in Mean Scale Score in SBA Mathematics by Grade between 2006-07 and 2007-08**



Reading: SBA Results Compared for O'Malley Elementary School, District and State Grades 3 Through 6															
	% Advanced Proficient			% Proficient			% Below Proficient			% Far Below Proficient			% Tested		
	School	District	State	School	District	State	School	District	State	School	District	State	School	District	State
All Students	57.77%	39.70%	35.67%	36.89%	43.89%	45.50%	*	11.60%	13.02%	*	4.80%	5.80%	99.52%	98.15%	97.98%
AF AM	*	20.73%	22.99%	60.00%	54.18%	53.49%	*	17.79%	16.46%	*	7.30%	7.06%	100.00%	98.04%	97.49%
AKNA/AI	37.50%	20.23%	14.62%	37.50%	51.11%	48.17%	*	18.54%	24.83%	*	10.11%	12.37%	100.00%	96.88%	97.59%
Asian	*	30.22%	28.26%	*	48.71%	51.04%	*	15.32%	15.32%	*	5.75%	5.38%	100.00%	97.64%	97.67%
NH/OPI	*	14.67%	N/A	*	51.03%	N/A	*	24.59%	N/A	*	9.71%	N/A	N/A	98.98%	N/A
White	61.59%	52.75%	47.28%	34.76%	38.06%	42.41%	*	6.69%	7.27%	*	2.50%	3.03%	99.39%	98.68%	98.28%
Hispanic	41.67%	32.35%	31.74%	50.00%	46.43%	48.60%	*	14.67%	13.66%	*	6.55%	6.00%	100.00%	97.14%	97.32%
ME	42.86%	33.26%	34.76%	42.86%	48.25%	47.75%	*	13.47%	12.80%	*	5.01%	4.70%	100.00%	98.15%	98.03%
EDS	22.22%	22.85%	21.47%	59.26%	49.71%	48.65%	*	19.04%	20.31%	*	8.40%	9.57%	100.00%	97.50%	96.44%
Not EDS	63.13%	51.44%	46.31%	33.52%	39.84%	43.15%	*	6.42%	7.56%	*	2.30%	2.98%	99.44%	98.61%	99.16%
SWD	20.51%	10.08%	9.29%	58.97%	37.10%	37.96%	*	32.15%	31.20%	*	20.67%	21.55%	97.50%	94.28%	93.60%
Non-SWD	66.47%	45.02%	40.09%	31.74%	45.12%	46.77%	*	7.91%	9.98%	*	1.95%	3.17%	100.00%	98.88%	98.75%
LEP	*	4.97%	3.12%	*	39.93%	38.06%	*	37.14%	38.40%	*	17.96%	20.42%	100.00%	94.25%	96.11%
Not LEP	58.33%	42.78%	39.95%	36.27%	44.25%	46.48%	*	9.33%	9.68%	*	3.64%	3.88%	99.51%	98.51%	98.23%
Migrant	*	27.01%	17.29%	*	50.34%	48.58%	*	16.44%	23.78%	*	6.21%	10.35%	100.00%	98.35%	98.50%
Not Migrant	58.91%	40.26%	36.97%	36.63%	43.61%	45.29%	*	11.38%	12.26%	*	4.74%	5.48%	99.51%	98.14%	97.94%
Female	65.00%	44.40%	39.45%	29.00%	43.41%	45.33%	*	8.75%	10.85%	*	3.44%	4.37%	100.00%	98.39%	98.31%
Male	50.94%	35.15%	32.09%	44.34%	44.37%	45.67%	*	14.36%	15.08%	*	6.13%	7.16%	99.07%	97.92%	97.66%

\* Results cannot be published without releasing personally identifiable information based upon the EED reporting protocol

Writing: SBA Results Compared for O'Malley Elementary School, District and State Grades 3 Through 6															
	% Advanced Proficient			% Proficient			% Below Proficient			% Far Below Proficient			% Tested		
	School	District	State	School	District	State	School	District	State	School	District	State	School	District	State
All Students	58.25%	34.87%	30.49%	32.04%	44.25%	44.50%	*	18.78%	22.32%	*	2.10%	2.69%	99.52%	98.11%	97.96%
AF AM	*	20.71%	20.51%	60.00%	46.71%	48.68%	*	28.71%	27.18%	*	3.88%	3.63%	100.00%	98.15%	97.71%
AKNA/AI	*	17.15%	12.11%	37.50%	45.31%	41.05%	37.50%	33.38%	40.69%	*	4.15%	6.15%	100.00%	96.51%	97.64%
Asian	*	30.17%	28.49%	*	45.92%	45.93%	*	21.33%	23.31%	*	2.58%	2.27%	100.00%	97.56%	97.67%
NH/OPI	*	14.02%	N/A	*	42.89%	N/A	*	39.38%	N/A	*	3.71%	N/A	N/A	99.18%	N/A
White	62.20%	45.85%	40.04%	29.88%	41.91%	44.71%	*	11.26%	13.97%	*	0.99%	1.28%	99.39%	98.66%	98.22%
Hispanic	41.67%	27.33%	27.00%	33.33%	47.25%	48.36%	*	22.54%	22.23%	*	2.88%	2.41%	100.00%	97.07%	97.36%
ME	50.00%	28.51%	29.14%	42.86%	47.68%	47.29%	*	21.31%	21.37%	*	2.51%	2.20%	100.00%	98.15%	97.96%
EDS	29.63%	18.92%	17.53%	44.44%	47.34%	45.15%	*	29.95%	32.95%	*	3.79%	4.37%	100.00%	97.50%	96.53%
Not EDS	62.57%	45.99%	40.21%	30.17%	42.10%	44.01%	*	10.99%	14.35%	*	0.92%	1.44%	99.44%	98.54%	99.06%
SWD	25.64%	7.09%	6.94%	38.46%	38.82%	37.02%	*	45.96%	47.34%	*	8.12%	8.69%	97.50%	94.28%	93.97%
Non-SWD	65.87%	39.86%	34.45%	30.54%	45.23%	45.76%	*	13.89%	18.11%	*	1.02%	1.69%	100.00%	98.83%	98.66%
LEP	*	4.71%	3.14%	*	37.05%	30.66%	*	50.57%	56.76%	*	7.67%	9.44%	100.00%	94.25%	96.18%
Not LEP	58.82%	37.55%	34.08%	31.37%	44.89%	46.32%	*	15.96%	17.79%	*	1.60%	1.81%	99.51%	98.47%	98.20%
Migrant	*	21.44%	14.20%	*	48.58%	42.55%	*	26.63%	38.57%	*	3.35%	4.68%	100.00%	98.51%	98.58%
Not Migrant	58.91%	35.46%	31.63%	32.18%	44.06%	44.64%	*	18.43%	21.18%	*	2.04%	2.55%	99.51%	98.09%	97.92%
Female	72.00%	42.63%	37.48%	20.00%	42.50%	43.42%	*	13.62%	17.40%	*	1.26%	1.70%	100.00%	98.32%	98.22%
Male	45.28%	27.36%	23.87%	43.40%	45.96%	45.52%	*	23.78%	26.98%	*	2.91%	3.63%	99.07%	97.90%	97.72%

\* Results cannot be published without releasing personally identifiable information based upon the EED reporting protocol

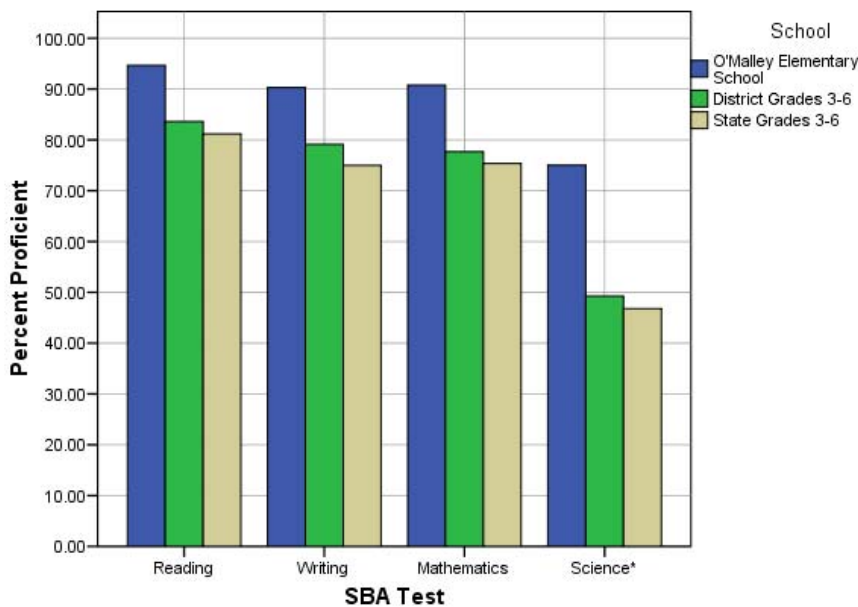
Mathematics: SBA Results Compared for O'Malley Elementary School, District and State Grades 3 Through 6															
	% Advanced Proficient			% Proficient			% Below Proficient			% Far Below Proficient			% Tested		
	School	District	State	School	District	State	School	District	State	School	District	State	School	District	State
All Students	59.71%	39.81%	36.08%	31.07%	37.84%	39.26%	*	12.46%	13.78%	*	9.88%	10.88%	99.52%	98.52%	98.12%
AF AM	60.00%	19.48%	22.09%	*	40.14%	41.60%	*	20.19%	18.61%	*	20.19%	17.70%	100.00%	98.38%	97.78%
AKNA/AI	37.50%	23.20%	18.26%	*	39.51%	39.14%	*	19.22%	21.79%	*	18.07%	20.81%	100.00%	96.96%	97.72%
Asian	*	37.02%	34.29%	*	41.20%	41.23%	*	13.76%	14.10%	*	8.03%	10.38%	100.00%	99.27%	98.99%
NH/OPI	*	18.52%	N/A	*	38.07%	N/A	*	20.16%	N/A	*	23.25%	N/A	N/A	99.39%	N/A
White	63.41%	51.12%	45.75%	28.05%	35.15%	38.35%	*	8.41%	9.81%	*	5.32%	6.09%	99.39%	98.69%	98.17%
Hispanic	41.67%	31.85%	31.11%	41.67%	40.04%	42.19%	*	15.02%	15.10%	*	13.09%	11.60%	100.00%	98.66%	98.47%
ME	42.86%	33.75%	35.45%	57.14%	41.21%	40.61%	*	13.93%	13.30%	*	11.11%	10.64%	100.00%	98.26%	98.00%
EDS	29.63%	24.26%	23.31%	37.04%	41.50%	40.98%	*	17.54%	18.60%	*	16.70%	17.11%	100.00%	98.14%	96.77%
Not EDS	64.25%	50.70%	45.67%	30.17%	35.28%	37.96%	*	8.91%	10.16%	*	5.12%	6.21%	99.44%	98.79%	99.16%
SWD	23.08%	12.52%	12.06%	35.90%	31.53%	32.14%	*	23.68%	23.60%	*	32.27%	32.20%	97.50%	94.19%	93.99%
Non-SWD	68.26%	44.69%	40.12%	29.94%	38.97%	40.45%	*	10.46%	12.13%	*	5.88%	7.30%	100.00%	99.34%	98.85%
LEP	*	8.22%	6.05%	*	36.74%	34.10%	*	24.50%	27.43%	*	30.54%	32.42%	100.00%	97.95%	97.56%
Not LEP	60.29%	42.73%	40.09%	30.39%	37.94%	39.95%	*	11.35%	11.96%	*	7.98%	8.01%	99.51%	98.57%	98.19%
Migrant	*	30.94%	22.37%	*	43.65%	40.27%	*	14.21%	20.36%	*	11.20%	17.00%	100.00%	98.68%	98.54%
Not Migrant	60.40%	40.21%	37.05%	31.19%	37.58%	39.19%	*	12.38%	13.31%	*	9.83%	10.45%	99.51%	98.51%	98.09%
Female	64.00%	41.01%	36.83%	29.00%	38.32%	39.88%	*	11.59%	13.34%	*	9.09%	9.96%	100.00%	98.71%	98.31%
Male	55.66%	38.66%	35.38%	33.02%	37.38%	38.67%	*	13.30%	14.20%	*	10.66%	11.75%	99.07%	98.34%	97.94%

\* Results cannot be published without releasing personally identifiable information based upon the EED reporting protocol

Science: SBA Results Compared for O'Malley Elementary School, District and State Grade 4															
	% Advanced Proficient			% Proficient			% Below Proficient			% Far Below Proficient			% Tested		
	School	District	State	School	District	State	School	District	State	School	District	State	School	District	State
All Students	43.18%	23.68%	22.1%	31.82%	25.57%	24.7%	15.91%	31.70%	31.3%	9.09%	19.06%	21.9%	97.78%	97.81%	95.35%
AF AM	*	9.18%	8.9%	*	18.84%	23.3%	*	39.13%	38.0%	*	32.85%	29.8%	N/A	98.57%	94.49%
AKNA/AI	*	6.54%	6.8%	*	21.50%	14.2%	*	42.99%	35.2%	*	28.97%	43.8%	100.00%	96.40%	94.98%
Asian	*	10.18%	13.4%	*	21.40%	19.4%	*	39.30%	37.5%	*	29.12%	29.7%	N/A	98.28%	97.39%
NH/OPI	*	6.57%	N/A	*	8.03%	N/A	*	34.31%	N/A	*	51.09%	N/A	N/A	98.56%	N/A
White	44.74%	36.40%	32.3%	28.95%	29.08%	29.9%	18.42%	25.33%	27.3%	7.89%	9.19%	10.5%	97.44%	97.87%	94.97%
Hispanic	*	16.17%	18.2%	*	26.15%	26.0%	*	32.08%	33.9%	*	25.61%	21.9%	100.00%	97.12%	96.39%
ME	*	16.06%	18.5%	*	26.12%	26.8%	*	37.47%	35.9%	*	20.34%	18.7%	100.00%	98.32%	96.90%
EDS	*	8.34%	11.0%	*	22.44%	20.1%	*	38.10%	34.7%	*	31.12%	34.2%	100.00%	97.73%	94.99%
Not EDS	48.72%	35.00%	31.2%	33.33%	27.88%	28.5%	*	26.97%	28.5%	*	10.15%	11.9%	97.50%	97.87%	95.64%
SWD	*	8.38%	7.7%	*	16.38%	15.2%	40.00%	36.57%	36.6%	30.00%	38.67%	40.5%	90.91%	93.25%	91.70%
Non-SWD	47.06%	26.43%	24.7%	41.18%	27.22%	26.4%	*	30.82%	30.4%	*	15.53%	18.5%	100.00%	98.68%	96.04%
LEP	*	2.00%	1.5%	*	5.14%	3.8%	*	34.00%	28.3%	*	58.86%	66.5%	N/A	96.15%	95.67%
Not LEP	43.18%	26.13%	25.2%	31.82%	27.88%	27.9%	15.91%	31.44%	31.8%	9.09%	14.55%	15.1%	97.78%	98.00%	95.30%
Migrant	*	9.70%	9.0%	*	26.87%	15.3%	*	39.55%	34.3%	*	23.88%	41.4%	100.00%	97.10%	97.32%
Not Migrant	45.24%	24.24%	23.0%	33.33%	25.51%	25.3%	14.29%	31.38%	31.1%	7.14%	18.86%	20.5%	97.67%	97.84%	95.21%
Female	34.78%	22.73%	20.8%	30.43%	25.78%	25.2%	17.39%	33.63%	32.6%	17.39%	17.87%	21.4%	100.00%	98.05%	95.43%
Male	52.38%	24.61%	23.4%	33.33%	25.36%	24.2%	*	29.80%	30.1%	*	20.23%	22.3%	95.45%	97.58%	95.27%

\* Results cannot be published without releasing personally identifiable information based upon the EED reporting protocol

2007-08 SBA Results Compared for O'Malley Elementary School, District and State



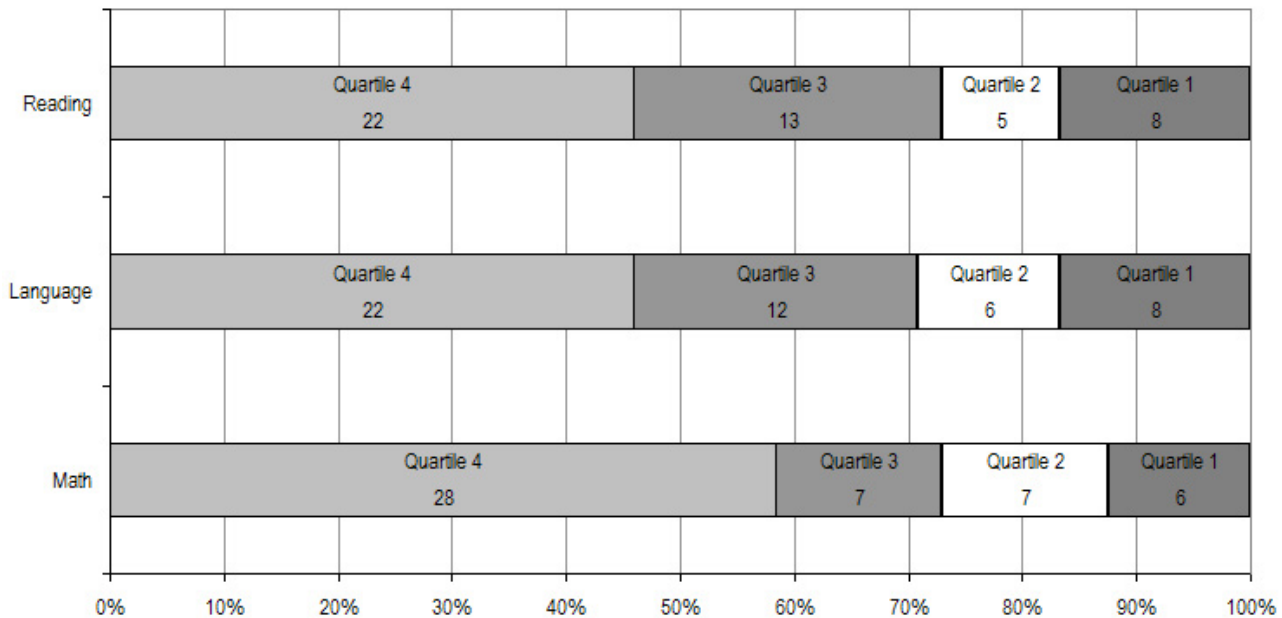
\* 2007-08 was the first year Science was administered for grades 4, 8 and 10 on the SBA.

O'Malley Elementary School TerraNova Grade 5 Percent in Each Quartile								
Reading	Above Average		Average				Below Average	
	4th Quartile (76-99 percentile)		3rd Quartile (51-75 percentile)		2nd Quartile (26-50 percentile)		1st Quartile (1-25 percentile)	
	School	District	School	District	School	District	School	District
07-08	45.83%	25.65%	27.08%	24.08%	10.42%	23.73%	16.67%	26.55%
06-07	57.7%	33.1%	25.0%	26.1%	11.5%	23.6%	5.8%	17.2%
05-06	54.8%	30.4%	28.6%	26.8%	9.5%	24.5%	7.1%	18.3%
04-05	47.7%	29.2%	34.1%	27.6%	11.4%	24.5%	6.8%	18.7%
03-04	59.5%	30.6%	26.2%	26.9%	11.9%	24.2%	2.4%	18.3%
<b>Language</b>								
07-08	45.83%	26.79%	25.00%	27.20%	12.50%	24.12%	16.67%	21.89%
06-07	55.8%	34.7%	28.8%	26.9%	*	21.4%	*	17.0%
05-06	52.4%	34.0%	31.0%	26.5%	11.9%	22.0%	4.8%	17.5%
04-05	47.7%	32.1%	29.5%	28.3%	15.9%	21.2%	6.8%	18.4%
03-04	64.3%	34.1%	31.0%	26.5%	2.4%	21.7%	2.4%	17.7%
<b>Mathematics</b>								
07-08	58.33%	25.45%	14.58%	26.40%	14.58%	24.47%	12.50%	23.68%
06-07	65.4%	29.7%	23.1%	31.6%	5.8%	21.2%	5.8%	17.4%
05-06	41.5%	28.4%	26.8%	31.9%	24.4%	22.3%	7.3%	17.5%
04-05	43.2%	26.9%	34.1%	31.1%	13.6%	22.9%	9.1%	19.1%
03-04	52.4%	28.3%	40.5%	29.3%	7.1%	22.6%	0.0%	19.8%

The double bold line indicates a change from the TerraNova 2<sup>nd</sup> edition to the TerraNova 3<sup>rd</sup> edition.

\* Results cannot be published without releasing personally identifiable information based upon the EED reporting protocol

2007-08 TerraNova 3rd Edition Grade 5 Percent and Count of Students in Each Quartile For O'Malley Elementary School



Climate Survey Results for O'Malley Elementary School

The Anchorage School District administered the School Climate and Connectedness Surveys in spring 2008 to students in grades 5-12, all school staff and parents/guardians of students in grades K-12. The surveys were done to provide schools with information about perceptions and experiences related to school climate for use in setting school goals and redirecting resources. In the spring of 2008 grades 3 and 4 students were involved in a pilot survey for measuring school climate and connectedness. The results are currently under review by the American Institutes for Research.

Respondents were asked to answer a series of questions that were related to a certain concept. For each item, there were five options from which to choose a response. The answer options ranged from strongly disagree (1) to strongly agree (5).

Student Survey Response Rate Grades 5-12			
	O'Malley Elementary School	Overall Elementary Schools	District**
# Surveys Completed	99	5,579	21,629
# Reportable Surveys	95	4,969	18,654
# Students Enrolled*	110	6,331	28,945
Reportable Response Rate	86.36%	78.49%	64.45%

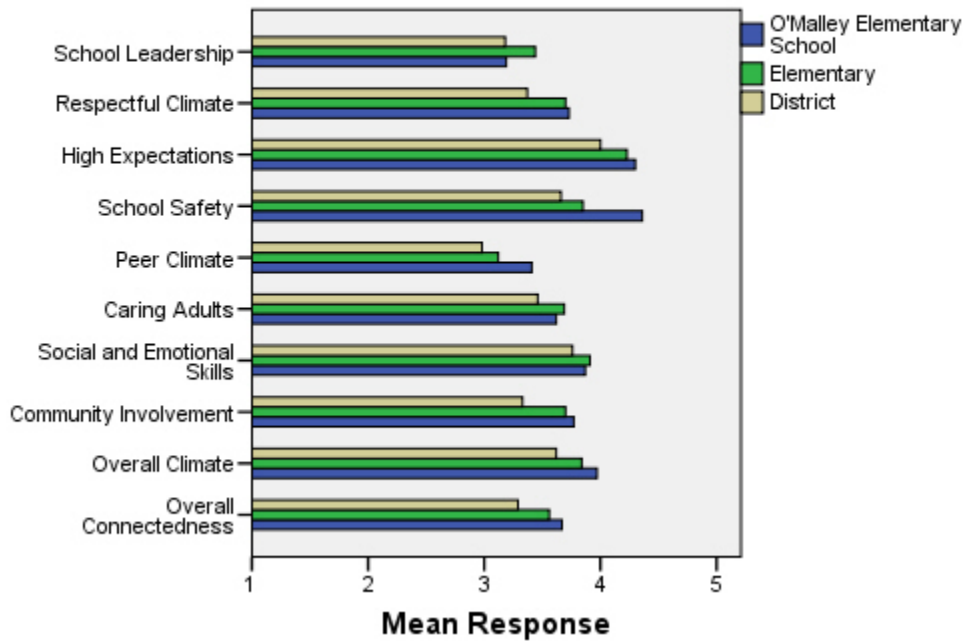
\*Number enrolled as of April 1, 2008

\*\*District data does not include KCC responses

Each question in the survey related to a factor or concept, and a score was calculated based on the mean response for the questions related to each factor. The factors measured in the survey were:

- **School Leadership and Student Involvement:** This factor reflects students' feelings about the decision making of school leaders as well as student participation in the school governance. Students selected responses between 1 and 5 where 1 indicates a low level of school leadership and student involvement and 5 indicates a high level of school leadership and student involvement.
- **Respectful Climate:** This factor reflects students' feelings about fairness of rules and respect for students' contributions. Students selected responses between 1 and 5 where 1 indicates a lack of a respectful climate and 5 indicates a highly respectful climate for students.
- **High Expectations:** This factor reflects students' feelings about their own expectations as well as those of adults in their school and community. Students selected responses between 1 and 5 where 1 indicates a lack of high expectations and 5 indicates a high level of high expectations.
- **School Safety:** This factor reflects students' feelings about bullies and gangs at school as well as general crime and violence in the community. Students selected responses between 1 and 5 where 1 indicates a low level of school safety and 5 indicates a high level of school safety.
- **Peer Climate:** This factor reflects students' feelings about how respectful students are to one another and how helpful students are to other students. Students selected responses between 1 and 5 where 1 indicates a more negative peer climate and 5 indicates a very positive peer climate at the school.
- **Caring Adults:** This factor reflects students' feelings about how close they feel to adults in the school. Students selected responses between 1 and 5 where 1 indicates a lack of caring adult relationships and 5 indicates strong caring adult relationships at the school.
- **Social and Emotional Learning:** This factor reflects students' ability to think about the consequences of their actions and to empathize with others. Students selected responses between 1 and 5 where 1 indicates that students at the school perceive themselves as having poorer social and emotional learning, and 5 indicates higher levels of social and emotional learning.
- **Community Involvement:** This factor reflects students' feelings about how supportive and welcoming the school is with parents and the community. Students selected responses between 1 and 5 where 1 indicates a less supportive and welcoming environment and 5 indicates a more supportive and welcoming environment.
- **Overall Climate:** The overall climate score was computed as the mean of three scales: school leadership, high expectations and school safety.
- **Overall Connectedness:** Overall connectedness score was computed as a mean of four scales: respectful climate, peer climate, caring adults and community involvement.

### Climate and Connectedness Student Survey - O'Malley



Student Survey Mean Response by Factors Related to School Climate - Overall District			
	O'Malley Elementary School	Overall Elementary Schools	District
School Leadership	3.19	3.44	3.18
Respectful Climate	3.73	3.70	3.37
High Expectations	4.30	4.23	4.00
School Safety	4.36	3.85	3.66
Peer Climate	3.41	3.12	2.98
Caring Adults	3.62	3.69	3.46
Social and Emotional Skills	3.87	3.91	3.76
Community Involvement	3.77	3.70	3.33
Overall Climate	3.97	3.84	3.62
Overall Connectedness	3.67	3.56	3.29

Range is from a low of 1 to a high of 5

Students were also asked to answer questions related to school danger. The following table provides the responses for those questions:

Student Survey Results of the School Danger Questions - Percent of Students Responding in Each Category					
	0 Times	1-2 Times	3-6 Times	7-12 Times	> 12 Times
<b>O'Malley Elementary School</b>					
Under the influence of drugs?	87.37%	10.53%	2.11%	0.00%	0.00%
Under the influence of alcohol?	95.79%	2.11%	1.05%	0.00%	1.05%
Destroy things (vandalism)?	65.26%	31.58%	3.16%	0.00%	0.00%
Get into fights?	31.58%	46.32%	17.89%	2.11%	2.11%
Steal things?	68.42%	25.26%	3.16%	2.11%	1.05%
Threaten or bully?	43.16%	37.89%	12.63%	2.11%	4.21%
Under the influence of inhalants?	84.21%	13.68%	1.05%	1.05%	0.00%
Carry weapons?	86.32%	11.58%	1.05%	0.00%	1.05%
<b>Overall Elementary Schools</b>					
Under the influence of drugs?	91.87%	5.65%	1.22%	0.31%	0.96%
Under the influence of alcohol?	91.42%	6.01%	1.16%	0.51%	0.90%
Destroy things (vandalism)?	46.82%	32.08%	12.45%	3.30%	5.36%
Get into fights?	22.32%	35.75%	22.56%	7.96%	11.41%
Steal things?	49.79%	27.92%	12.01%	4.33%	5.95%
Threaten or bully?	32.34%	28.83%	17.08%	7.78%	13.97%
Under the influence of inhalants?	71.03%	17.07%	6.14%	2.63%	3.12%
Carry weapons?	79.22%	15.35%	3.17%	0.59%	1.68%
<b>District</b>					
Under the influence of drugs?	60.45%	15.05%	9.54%	3.92%	11.04%
Under the influence of alcohol?	63.11%	16.37%	8.90%	4.43%	7.19%
Destroy things (vandalism)?	41.26%	29.47%	15.45%	5.88%	7.94%
Get into fights?	26.40%	35.20%	21.96%	7.11%	9.33%
Steal things?	44.80%	25.68%	13.81%	6.98%	8.74%
Threaten or bully?	32.21%	26.21%	16.68%	9.27%	15.63%
Under the influence of inhalants?	72.79%	14.21%	5.66%	2.48%	4.87%
Carry weapons?	69.45%	19.15%	5.34%	2.01%	4.06%

Student Survey Results of the Mean Factor Score by Ethnicity (Self-Reported)							
	AKNA/AI	AF AM	Hispanic	Asian/NH	White	Other	Multi-Ethnic
<b>O'Malley Elementary School</b>							
School Leadership	3.17	4.00	2.53	3.80	3.19	3.40	3.11
Respectful Climate	3.60	4.17	4.06	4.00	3.73	3.71	3.55
High Expectations	4.09	4.71	4.52	4.43	4.35	4.05	4.03
School Safety	3.80	5.00	4.93	4.90	4.40	3.95	4.36
Peer Climate	3.03	4.20	3.47	3.80	3.43	3.45	3.27
Caring Adults	3.57	3.80	3.53	3.20	3.78	2.65	3.18
Social and Emotional Skills	4.00	4.33	4.40	3.70	3.84	3.64	3.93
Community Involvement	3.33	4.29	3.86	4.07	3.82	3.68	3.67
Overall Climate	3.71	4.57	4.00	4.38	3.98	3.77	3.90
Overall Connectedness	3.40	4.11	3.73	3.77	3.71	3.37	3.57
<b>Overall Elementary Schools</b>							
School Leadership	3.56	3.50	3.52	3.55	3.37	3.44	3.42
Respectful Climate	3.75	3.60	3.66	3.72	3.71	3.69	3.63
High Expectations	4.12	4.23	4.23	4.22	4.26	4.19	4.25
School Safety	3.75	3.63	3.73	3.68	4.03	3.66	3.79
Peer Climate	3.12	2.94	3.12	3.18	3.16	3.05	3.05
Caring Adults	3.64	3.73	3.64	3.59	3.74	3.60	3.76
Social and Emotional Skills	3.86	3.84	3.91	3.95	3.93	3.90	3.89
Community Involvement	3.66	3.60	3.67	3.66	3.75	3.66	3.70
Overall Climate	3.81	3.79	3.84	3.81	3.89	3.76	3.82
Overall Connectedness	3.56	3.49	3.51	3.53	3.60	3.49	3.56
<b>District</b>							
School Leadership	3.33	3.14	3.19	3.28	3.14	3.17	3.15
Respectful Climate	3.48	3.18	3.32	3.39	3.39	3.37	3.33
High Expectations	3.98	3.94	3.96	4.02	4.02	4.00	4.01
School Safety	3.60	3.48	3.55	3.47	3.78	3.51	3.62
Peer Climate	3.01	2.85	2.94	3.05	3.00	2.92	2.93
Caring Adults	3.49	3.43	3.37	3.33	3.51	3.42	3.46
Social and Emotional Skills	3.73	3.66	3.73	3.81	3.78	3.75	3.74
Community Involvement	3.37	3.22	3.31	3.29	3.34	3.34	3.31
Overall Climate	3.64	3.52	3.57	3.59	3.65	3.56	3.60
Overall Connectedness	3.33	3.17	3.24	3.26	3.31	3.26	3.27

The response rate is not high enough to provide statistically reliable results for O'Malley Elementary School's Staff Survey Results.

Parent/Guardian Survey Response Rate			
	O'Malley Elementary School	Overall Elementary Schools	District**
# Surveys Completed	68	3,933	7,415
# Primary Guardians*	315	23,668	48,693
Response Rate	21.59%	16.62%	15.23%

\*Number students enrolled as of April 1, 2008 without dual guardians included

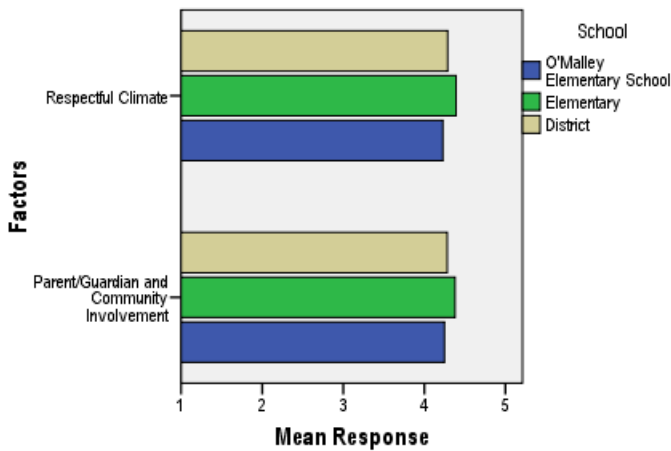
\*\*District data

- 1) does not include KCC responses;
- 2) does include responses without a school designation

Two factors are calculated from the Parent/Guardian Survey. All results other than the factor scores below are reported by individual question: questions in the graphs are condensed phrases from the full question, while questions in the tables are the full question.

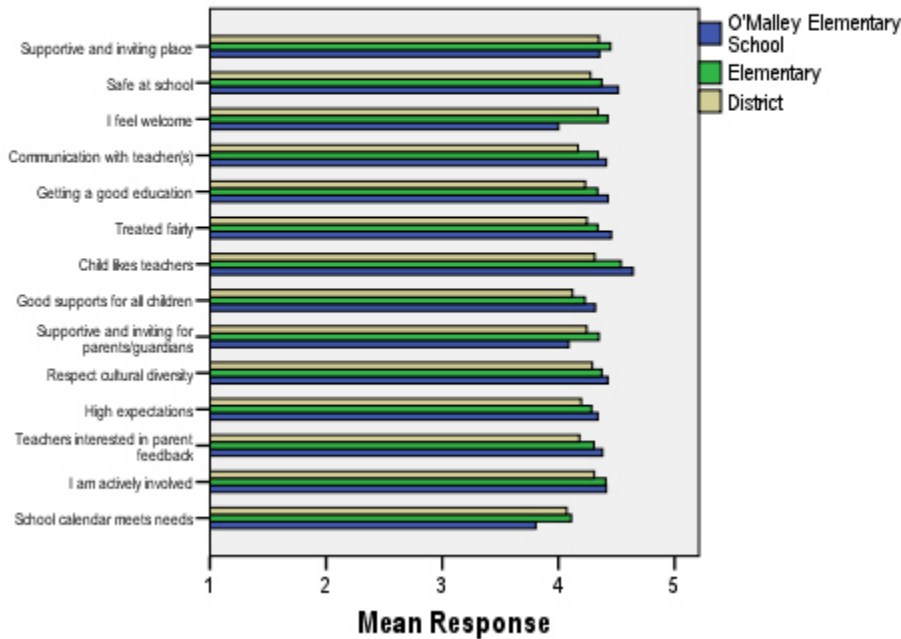
- **Respectful Climate:** This factor is calculated by determining the mean of five questions: 1) My child's school is a supportive and inviting place, 2) I feel welcome at this school, 3) I am satisfied with communication with my child's teacher(s), 4) This school is a supportive and inviting place for parents/guardians and 5) Adults at this school respect cultural diversity.
- **Parent/Guardian and Community Involvement:** This factor is calculated by determining the mean of five questions: 1) I feel welcome at this school, 2) This school is a supportive and inviting place for parents/guardians, 3) Adults at this school respect cultural diversity, 4) Teacher's at my child's school are interested in what I have to say and 5) I feel like I am actively involved in my child's education.

**Parent/Guardian Survey Mean Factor Scores (Range is from a low of 1 to a high of 5)**



Parent/Guardian Factor Scores			
	O'Malley Elementary School	Overall Elementary Schools	District
Respectful Climate	4.23	4.39	4.29
Parent/Guardian and Community Involvement	4.25	4.38	4.28

**Climate and Connectedness Parent/Guardian Survey - O'Malley**



Parent/Guardian Mean Response by Questions Related to School Climate - Overall

	O'Malley Elementary School	Overall Elementary Schools	District
My child's school is a supportive and inviting place	4.35	4.45	4.35
My child is safe at school	4.51	4.37	4.28
I feel welcome at this school	4.00	4.43	4.34
I am satisfied with communication with my child's teacher(s)	4.41	4.34	4.17
My child is getting a good education at this school	4.43	4.34	4.23
My child is treated fairly at school	4.46	4.34	4.25
My child likes his/her teachers	4.64	4.54	4.31
At this school, there are good supports for all children, including children with learning disabilities	4.32	4.23	4.12
This school is a supportive and inviting place for parents/guardians	4.09	4.35	4.24
Adults at this school respect cultural diversity	4.42	4.37	4.29
Adults at this school have high expectations of my child	4.34	4.29	4.20
Teachers at my child's school are interested in what I have to say	4.38	4.31	4.18
I feel like I am actively involved in my child's education	4.41	4.41	4.31
The district's school calendar meets the needs of my child and our family	3.81	4.11	4.07

Range is from a low of 1 to a high of 5

Parent/Guardian Mean Response by Questions Related to School Climate by Ethnicity (Self-Reported)							
O'Malley Elementary School	AF AM	AKNA/AI	Asian/NH	White	Hispanic	ME	Other
My child's school is a supportive and inviting place	4.00	4.75	***	4.39	5.00	4.20	4.33
My child is safe at school	4.00	4.25	***	4.63	5.00	4.40	4.00
I feel welcome at this school	4.00	4.50	***	4.04	5.00	4.00	4.33
I am satisfied with communication with my child's teacher(s)	2.00	4.75	***	4.61	5.00	3.80	4.33
My child is getting a good education at this school	4.00	4.25	***	4.55	5.00	4.00	4.33
My child is treated fairly at school	4.00	4.75	***	4.57	5.00	4.20	4.33
My child likes his/her teachers	4.00	4.75	***	4.73	5.00	4.60	4.33
At this school, there are good supports for all children, including children with learning disabilities	2.00	4.50	***	4.38	***	4.40	4.33
This school is a supportive and inviting place for parents/guardians	4.00	4.50	***	4.14	5.00	4.00	4.33
Adults at this school respect cultural diversity	4.00	4.50	***	4.38	5.00	4.40	4.33
Adults at this school have high expectations of my child	2.00	4.25	***	4.49	5.00	4.00	4.33
Teachers at my child's school are interested in what I have to say	4.00	4.75	***	4.40	5.00	4.20	4.33
I feel like I am actively involved in my child's education	5.00	4.25	***	4.49	5.00	4.60	4.00
The district's school calendar meets the needs of my child and our family	4.00	4.25	***	4.04	3.00	4.00	2.00
<b>Overall Elementary Schools</b>							
My child's school is a supportive and inviting place	4.36	4.47	4.44	4.47	4.51	4.46	4.26
My child is safe at school	4.40	4.42	4.36	4.38	4.42	4.35	4.23
I feel welcome at this school	4.38	4.37	4.48	4.44	4.47	4.49	4.27
I am satisfied with communication with my child's teacher(s)	4.30	4.40	4.36	4.35	4.45	4.35	4.19
My child is getting a good education at this school	4.28	4.40	4.40	4.33	4.44	4.38	4.04
My child is treated fairly at school	4.15	4.34	4.32	4.38	4.37	4.33	4.14
My child likes his/her teachers	4.41	4.52	4.53	4.57	4.47	4.55	4.49
At this school, there are good supports for all children, including children with learning disabilities	4.06	4.32	4.31	4.22	4.31	4.31	4.05
This school is a supportive and inviting place for parents/guardians	4.22	4.31	4.38	4.36	4.42	4.44	4.11
Adults at this school respect cultural diversity	4.25	4.28	4.27	4.43	4.38	4.39	4.19
Adults at this school have high expectations of my child	4.26	4.30	4.27	4.31	4.36	4.28	3.95
Teachers at my child's school are interested in what I have to say	4.25	4.35	4.24	4.33	4.39	4.31	4.16
I feel like I am actively involved in my child's education	4.48	4.38	4.31	4.45	4.40	4.40	4.20
The district's school calendar meets the needs of my child and our family	4.25	4.22	4.19	4.10	4.20	4.08	3.62
<b>District</b>							
My child's school is a supportive and inviting place	4.20	4.37	4.37	4.37	4.41	4.37	4.20
My child is safe at school	4.18	4.31	4.31	4.29	4.29	4.30	4.11
I feel welcome at this school	4.18	4.31	4.36	4.36	4.38	4.40	4.23
I am satisfied with communication with my child's teacher(s)	3.99	4.21	4.23	4.16	4.32	4.20	4.03
My child is getting a good education at this school	4.09	4.28	4.31	4.23	4.33	4.26	4.03
My child is treated fairly at school	3.94	4.21	4.24	4.29	4.30	4.24	4.08
My child likes his/her teachers	4.06	4.33	4.35	4.33	4.31	4.34	4.20
At this school, there are good supports for all children, including children with learning disabilities	3.90	4.19	4.23	4.11	4.24	4.18	3.97
This school is a supportive and inviting place for parents/guardians	4.05	4.21	4.29	4.26	4.31	4.31	4.05
Adults at this school respect cultural diversity	4.02	4.20	4.22	4.34	4.29	4.31	4.17
Adults at this school have high expectations of my child	4.05	4.24	4.21	4.21	4.26	4.20	3.94
Teachers at my child's school are interested in what I have to say	4.04	4.22	4.17	4.20	4.28	4.19	4.05
I feel like I am actively involved in my child's education	4.36	4.29	4.24	4.33	4.37	4.30	4.20
The district's school calendar meets the needs of my child and our family	4.18	4.19	4.16	4.06	4.21	4.02	3.66

Range is from a low of 1 to a high of 5

\*\*\*Results can not be calculated because of missing responses