

Ocean View Elementary School Overview

Statement of Program

Ocean View Elementary School is a safe, positive and caring community that is dedicated to high academic and behavioral standards. The staff works closely with parents and the community to provide a learning environment where students experience academic and interpersonal success through self-discipline and positive decision-making.

From the School Report Card

School Goals

Goal	Level of Achievement
The number of students rated proficient on the state reading assessment will maintain at 87.7 percent.	Not Attained
The number of students rated proficient on the state math assessment will maintain at 85.6 percent.	Partially Attained
Parents will feel more comfortable and welcome in the building.	Attained

From the School Report Card

Budget*

2006-07 Actual Expenditures	\$2,769,843
2007-08 Revised Budgeted Amount	\$3,075,303
2008-09 Proposed Budget	\$3,014,453

*Dollars budgeted or expended are general fund only
From IFAS

Ocean View Elementary School Characteristics			
	School	District	Source of Information
Membership	472	48,858	Fall OASIS
Capacity	87.90%	N/A	2008-18 ASD Capital Improvement Plan
Attendance Rate	94.20%	92.83%	NCLB Summer Data Collection
Retention Rate K-8	0.21%	0.60%	SMS and NCLB Summer Data Collection
Transiency Rate	22.61%	26.07%	NCLB Summer Data Collection
Economically Disadvantaged	129	17,717	Fall OASIS
Average Weekly Volunteer Hours	65	4,660	Department of Education Report Card Report
Students Taking the Alternate Assessment	0	228	SMS
Change in Enrollment	-7.63%	-0.76%	Fall Oasis

Teacher Qualification				
Number of Teachers	Percent Fully Licensed	Percent With Advanced Degrees	Number Nationally Board Certified	Percent of Classes Taught by "Highly Qualified Teachers"
34	100.00%	38.23%	0	100.00%

Ocean View Elementary School Business Partnerships
Anchorage Sand and Gravel; Carrs-Safeway, Huffman Road; Dimond Greenhouses; Steamers Coffee Shop

From the School Report Card

Ethnicity Report							
African-American/Black	Alaska Native/American Indian	Asian	Native Hawaiian/Other Pacific Islander	White	Hispanic	Multi-Ethnic	Total
15	46	17	8	277	29	80	472

From Fall Oasis

Full Academic Year		
Students Enrolled	Students Enrolled for FAY	Percent FAY
472	426	90.25%

From participation file (Grades 3-10)

Ocean View Elementary School
 2007-08 Adequate Yearly Progress
 Status Report

Meets AYP

AMO For Language Arts: 77.18%
 AMO For Mathematics: 66.09%

Group	Participation Rate				"FAY" (D) Tested & Enrolled "FAY"	Language Arts Performance				Mathematics Performance			
	(A) Number Enrolled	(B) Number Tested	Participation Rate (%)	(C) Participation Rate Met		(E) Proficient on LA	(F) Percent Proficient on LA	(G) LA Target	(H) Met AMO for LA	(I) Proficient on Mathematics	(J) Percent Proficient in Mathematics	(K) Mathematics Target	(L) Met AMO for Mathematics
All Students	290	289	99.7%	Yes	264	225	85.2%	71.2%	Yes	216	81.8%	59.3%	Yes
AF AM	7	7	N/A	N/A	N/A	N/A	N/A	N/A	N/A	N/A	N/A	N/A	N/A
AKNA/AI	31	30	96.8%	Yes	N/A	N/A	N/A	N/A	N/A	N/A	N/A	N/A	N/A
Asian/NH/OPI	12	12	N/A	N/A	N/A	N/A	N/A	N/A	N/A	N/A	N/A	N/A	N/A
White	175	175	100%	Yes	167	145	86.8%	69.6%	Yes	142	85%	57.6%	Yes
Hispanic	20	20	N/A	N/A	N/A	N/A	N/A	N/A	N/A	N/A	N/A	N/A	N/A
ME	45	45	100%	Yes	38	32	84.2%	61.3%	Yes	33	86.8%	48.2%	Yes
EDS	67	67	100%	Yes	56	43	76.8%	64.1%	Yes	40	71.4%	51.4%	Yes
SWD	51	51	100%	Yes	47	31	66%	62.9%	Yes	33	70.2%	50%	Yes
LEP	21	21	100%	Yes	N/A	N/A	N/A	N/A	N/A	N/A	N/A	N/A	N/A

Attendance Rate: Met

94.2% (Threshold is 85%)

N/A is used to indicate:

- (1) Subgroups with 20 or fewer students enrolled on the first day of testing shall not be included in participation rate calculation.
- (2) Subgroups with 25 or fewer students enrolled for the "full academic year" shall not have the performance score computed.

* For the groups where the number enrolled is less than or equal to 40, participation is met when no more than two miss the test. Groups can also meet this target using the average of the past two or three years.

** When a group achieves a "Yes" without meeting the listed target, it has done so using either the 99% confidence interval or Safe Harbor.

*** The results cannot be published without releasing personally identifiable information based upon the EED reporting protocol.

This document was prepared by the ASD Assessment and Evaluation Department.

7/10/2008

Ocean View Elementary School
2007-08 Adequate Yearly Progress
Growth Report

The AYP growth reports are generated by the Alaska State Department of Education and Early Development. The reports can be found online at: http://www.asdk12.org/depts/assess_eval/AYP/State_AS_D_AYG_0708.pdf

SBA Proficiency Comparison by Grade for Ocean View Elementary School																
	Reading Percent Proficient				Writing Percent Proficient				Mathematics Percent Proficient				Science* Percent Proficient			
	04-05	05-06	06-07	07-08	04-05	05-06	06-07	07-08	04-05	05-06	06-07	07-08	04-05	05-06	06-07	07-08
All Students	83.73%	84.97%	86.94%	85.81%	77.71%	81.90%	84.54%	81.94%	73.57%	80.67%	84.25%	79.93%	N/A	N/A	N/A	54.17%
Grade 3	80.68%	80.60%	79.73%	78.79%	73.86%	80.60%	83.78%	78.79%	75.00%	86.57%	87.84%	81.82%	N/A	N/A	N/A	N/A
Grade 4	90.77%	77.11%	88.41%	84.72%	80.00%	75.90%	81.16%	81.94%	76.92%	71.08%	78.26%	86.11%	N/A	N/A	N/A	54.17%
Grade 5	86.02%	89.33%	86.25%	88.24%	78.49%	81.33%	80.00%	76.47%	78.72%	80.00%	81.25%	72.06%	N/A	N/A	N/A	N/A
Grade 6	79.07%	91.09%	94.12%	90.36%	79.07%	88.12%	94.12%	89.02%	63.95%	85.15%	89.86%	79.52%	N/A	N/A	N/A	N/A

* 2007-08 was the first year Science was administered for grades 4, 8 and 10 on the SBA.

SBA Proficient & Not Proficient by NCLB Groups for Ocean View Elementary School								
	Reading		Writing		Mathematics		Science**	
	Percent Proficient	Percent Not Proficient	Percent Proficient	Percent Not Proficient	Percent Proficient	Percent Not Proficient	Percent Proficient	Percent Not Proficient
All Students	85.81%	14.19%	81.94%	18.06%	79.93%	20.07%	54.17%	45.83%
AF AM	60% or more	40% or fewer	57.14%	42.86%	60% or more	40% or fewer	*	*
AKNA/AI	80.00%	20.00%	83.33%	16.67%	66.67%	33.33%	*	*
Asian	75% or more	25% or fewer	75% or more	25% or fewer	75% or more	25% or fewer	*	*
NH/OPI	*	*	*	*	*	*	*	*
White	89.71%	10.29%	86.21%	13.79%	84.00%	16.00%	59.18%	40.82%
Hispanic	70.00%	30.00%	60.00%	40.00%	75.00%	25.00%	57.14%	42.86%
ME	82.22%	17.78%	80.00%	20.00%	80.00%	20.00%	50.00%	50.00%
EDS	71.64%	28.36%	68.66%	31.34%	68.66%	31.34%	50.00%	50.00%
Non-EDS	90.09%	9.91%	85.97%	14.03%	83.33%	16.67%	55.77%	44.23%
SWD	57.14%	42.86%	66.67%	33.33%	64.29%	35.71%	42.86%	57.14%
Non-SWD	90.69%	9.31%	84.55%	15.45%	82.59%	17.41%	56.90%	43.10%
LEP	40% or fewer	60% or more	40% or fewer	60% or more	40% or fewer	60% or more	*	*
Not LEP	87.94%	12.06%	83.63%	16.37%	81.56%	18.44%	55.71%	44.29%
Migrant	68.75%	31.25%	81.25%	18.75%	80% or more	20% or fewer	*	*
Not Migrant	86.81%	13.19%	81.99%	18.01%	79.49%	20.51%	52.17%	47.83%
Female	91.85%	8.15%	90.37%	9.63%	77.04%	22.96%	51.52%	48.48%
Male	80.52%	19.48%	74.51%	25.49%	82.47%	17.53%	56.41%	43.59%

* Results cannot be published without releasing personally identifiable information based upon the EED reporting protocol

** 2007-08 was the first year Science was administered for grades 4, 8 and 10 on the SBA.

SBA Mean Scale Score Comparison by NCLB Groups for Ocean View Elementary School								
	Reading		Writing		Mathematics		Science***	
	06-07	07-08	06-07	07-08	06-07	07-08	06-07	07-08
All Students	383.16	381.86	383.02	378.68	366.14	355.53	N/A	314.72
AF AM	351.44	344.43	341.83	316.00	320.06	302.71	N/A	*
AKNA/AI	361.68	354.00	362.61	355.20	346.36	326.17	N/A	*
Asian**	404.63*	376.13	440.38*	387.88	402.22*	379.88	N/A	*
NH/OPI**	N/A	*	N/A	*	N/A	*	N/A	*
White	389.54	395.95	389.83	393.08	373.26	365.77	N/A	326.94
Hispanic	372.75	361.65	360.67	333.50	359.83	342.45	N/A	299.43
ME	372.39	364.07	367.06	373.78	347.33	348.84	N/A	294.90
EDS	350.50	351.67	356.24	346.28	340.50	329.22	N/A	295.85
Non-EDS	395.55	390.97	393.18	388.51	375.82	363.47	N/A	321.98
SWD	317.81	325.98	322.27	340.81	322.05	318.24	N/A	298.29
Non-SWD	392.69	391.36	391.87	385.15	372.54	361.87	N/A	318.69
LEP	335.18	259.57	333.82	263.86	334.06	254.86	N/A	*
Not LEP	386.14	384.89	386.07	381.54	368.25	358.03	N/A	318.19
Migrant	329.42	335.50	364.25	355.13	339.83	337.13	N/A	*
Not Migrant	385.48	384.58	383.83	380.07	367.27	356.61	N/A	313.80
Female	402.19	399.09	409.37	402.27	372.50	358.73	N/A	317.45
Male	365.77	366.75	358.92	357.87	360.37	352.73	N/A	312.41

* Results cannot be published without releasing personally identifiable information based upon the EED reporting protocol

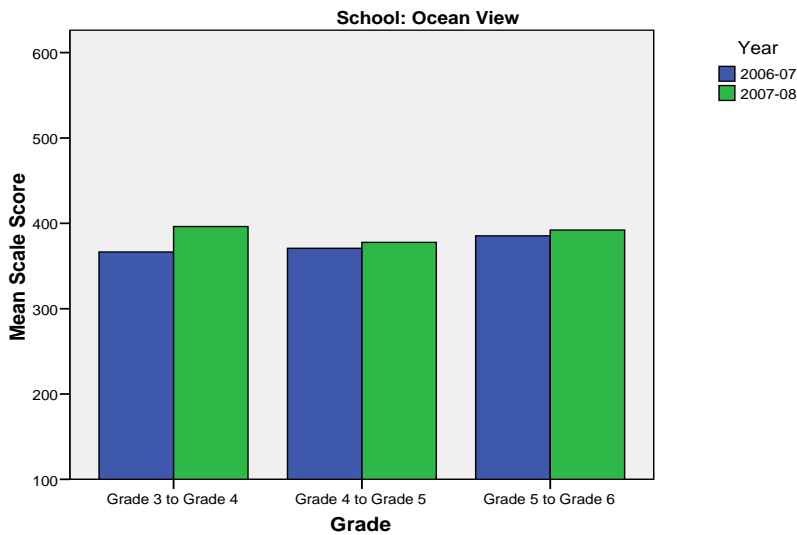
** Prior to 2007-08 the Asian category includes Native Hawaiian/Other Pacific Islander. In 2007-08 Native Hawaiian/Other Pacific Islander is a separate ethnic category.

*** 2007-08 was the first year Science was administered for grades 4, 8 and 10 on the SBA.

Ocean View Elementary School SBA Change Average Scale Score by NCLB Groups: Reading									
	Average Scale Score of Students Tested in District Both Years			Average Scale Score of Students Tested in District Both Years			Average Scale Score of Students Tested in District Both Years		
	Grade 3 in 06-07	Grade 4 in 07-08	Difference	Grade 4-in 06-07	Grade 5 in 07-08	Difference	Grade 5-in 06-07	Grade 6 in 07-08	Difference
All Students	366.52	396.22	29.70	370.79	377.73	6.94	385.42	392.19	6.77
AF AM	*	*	*	*	*	*	*	*	*
AKNA/AI	*	*	*	317.50	338.50	21.00	341.80	332.00	-9.80
Asian	*	*	*	*	*	*	*	*	*
NH/OPI	*	*	*	*	*	*	*	*	*
White	371.72	403.79	32.06	382.57	387.11	4.54	399.71	409.11	9.40
Hispanic	377.20	423.00	45.80	*	*	*	*	*	*
ME	339.67	366.44	26.78	363.83	377.42	13.58	386.10	379.50	-6.60
EDS	343.84	362.63	18.79	342.00	355.67	13.67	332.40	355.70	23.30
Non-EDS	375.50	409.52	34.02	379.98	384.77	4.79	394.41	398.37	3.97
SWD	312.69	339.77	27.08	313.20	339.10	25.90	330.00	343.00	13.00
Non-SWD	379.48	409.81	30.33	381.87	385.15	3.29	389.75	396.03	6.28
LEP	*	*	*	*	*	*	*	*	*
Not LEP	366.52	396.22	29.70	373.11	379.57	6.46	389.25	395.31	6.06
Migrant	*	*	*	*	*	*	*	*	*
Not Migrant	369.44	400.33	30.89	373.02	379.29	6.27	388.20	394.12	5.92
Female	379.70	403.93	24.23	392.81	403.81	11.00	402.03	402.32	0.30
Male	355.84	389.97	34.14	353.80	357.60	3.80	366.22	380.47	14.25

* Results cannot be published without releasing personally identifiable information based upon the EED reporting protocol

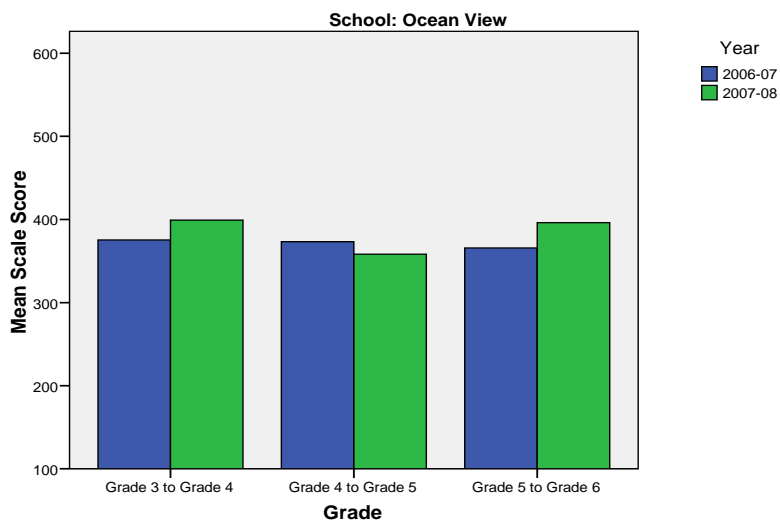
Change in Mean Scale Score in SBA Reading by Grade Between 2006-07 and 2007-08



Ocean View Elementary School SBA Change Average Scale Score by NCLB Groups: Writing									
	Average Scale Score of Students Tested in District Both Years			Average Scale Score of Students Tested in District Both Years			Average Scale Score of Students Tested in District Both Years		
	Grade 3 in 06-07	Grade 4 in 07-08	Difference	Grade 4- in 06-07	Grade 5 in 07-08	Difference	Grade 5- in 06-07	Grade 6 in 07-08	Difference
All Students	375.39	399.09	23.70	373.26	358.26	-15.00	365.61	396.16	30.55
AF AM	*	*	*	*	*	*	*	*	*
AKNA/AI	*	*	*	320.50	328.50	8.00	318.80	343.40	24.60
Asian	*	*	*	*	*	*	*	*	*
NH/OPI	*	*	*	*	*	*	*	*	*
White	383.15	409.06	25.91	378.09	360.77	-17.31	384.41	413.98	29.57
Hispanic	384.00	351.80	-32.20	*	*	*	*	*	*
ME	347.56	383.67	36.11	387.75	379.50	-8.25	344.44	382.11	37.67
EDS	346.53	368.26	21.74	356.60	340.47	-16.13	326.50	348.00	21.50
Non-EDS	386.81	411.29	24.48	378.57	363.94	-14.64	372.47	404.61	32.14
SWD	356.46	361.15	4.69	311.20	330.70	19.50	311.20	334.20	23.00
Non-SWD	379.94	408.22	28.28	385.19	363.56	-21.63	370.00	401.16	31.16
LEP	*	*	*	*	*	*	*	*	*
Not LEP	375.39	399.09	23.70	374.82	360.33	-14.49	370.14	399.51	29.37
Migrant	*	*	*	*	*	*	*	*	*
Not Migrant	376.20	400.95	24.75	372.83	356.73	-16.10	368.27	398.77	30.50
Female	403.33	413.17	9.83	408.85	392.81	-16.04	377.62	411.11	33.49
Male	352.73	387.68	34.95	345.80	331.60	-14.20	350.80	377.73	26.93

* Results cannot be published without releasing personally identifiable information based upon the EED reporting protocol

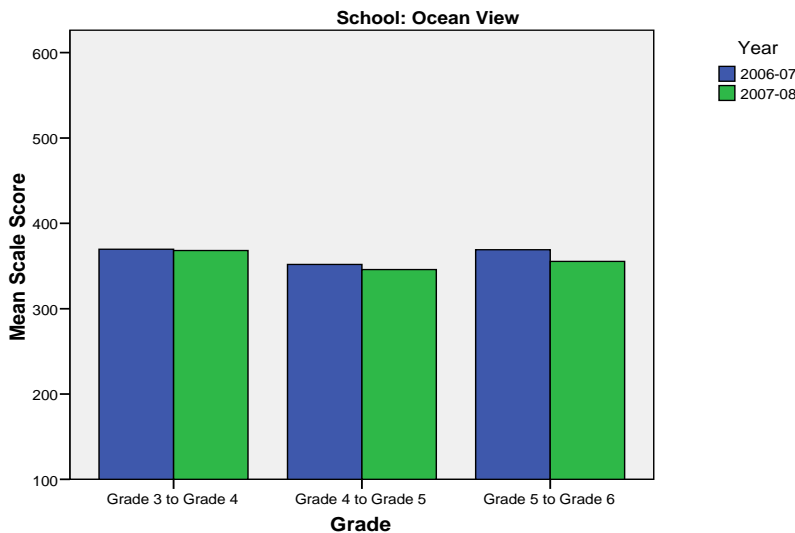
Change in Mean Scale Score in SBA Writing by Grade between 2006-07 and 2007-08



Ocean View Elementary School SBA Change Average Scale Score by NCLB Groups: Mathematics									
	Average Scale Score of Students Tested in District Both Years			Average Scale Score of Students Tested in District Both Years			Average Scale Score of Students Tested in District Both Years		
	Grade 3 in 06-07	Grade 4 in 07-08	Difference	Grade 4- in 06-07	Grade 5 in 07-08	Difference	Grade 5- in 06-07	Grade 6 in 07-08	Difference
All Students	369.64	368.13	-1.51	351.71	345.82	-5.89	369.15	355.41	-13.74
AF AM	*	*	*	*	*	*	*	*	*
AKNA/AI	*	*	*	322.83	315.17	-7.67	320.00	286.60	-33.40
Asian	*	*	*	*	*	*	*	*	*
NH/OPI	*	*	*	*	*	*	*	*	*
White	371.57	372.81	1.23	363.54	349.57	-13.97	382.16	364.67	-17.49
Hispanic	385.20	378.00	-7.20	*	*	*	*	*	*
ME	370.67	347.11	-23.56	334.58	351.92	17.33	351.78	352.22	0.44
EDS	341.05	333.84	-7.21	327.73	332.67	4.93	335.50	316.10	-19.40
Non-EDS	380.96	381.71	0.75	359.36	350.02	-9.34	374.95	362.19	-12.76
SWD	334.85	327.46	-7.38	312.30	329.20	16.90	319.20	287.00	-32.20
Non-SWD	378.02	377.93	-0.09	359.29	349.02	-10.27	373.11	360.84	-12.27
LEP	*	*	*	*	*	*	*	*	*
Not LEP	369.64	368.13	-1.51	353.49	347.62	-5.87	372.27	356.91	-15.36
Migrant	*	*	*	*	*	*	*	*	*
Not Migrant	369.33	369.42	0.09	354.29	347.14	-7.15	371.23	357.52	-13.71
Female	376.03	377.90	1.87	354.52	344.89	-9.63	368.35	352.89	-15.46
Male	364.46	360.22	-4.24	349.54	346.54	-3.00	370.10	358.42	-11.68

* Results cannot be published without releasing personally identifiable information based upon the EED reporting protocol

Change in Mean Scale Score in SBA Mathematics by Grade between 2006-07 and 2007-08



Reading: SBA Results Compared for Ocean View Elementary School, District and State Grades 3 Through 6															
	% Advanced Proficient			% Proficient			% Below Proficient			% Far Below Proficient			% Tested		
	School	District	State	School	District	State	School	District	State	School	District	State	School	District	State
All Students	36.68%	39.70%	35.67%	49.13%	43.89%	45.50%	10.03%	11.60%	13.02%	4.15%	4.80%	5.80%	99.66%	98.15%	97.98%
AF AM	*	20.73%	22.99%	85.71%	54.18%	53.49%	*	17.79%	16.46%	*	7.30%	7.06%	100.00%	98.04%	97.49%
AKNA/AI	20.00%	20.23%	14.62%	60.00%	51.11%	48.17%	*	18.54%	24.83%	*	10.11%	12.37%	96.77%	96.88%	97.59%
Asian	50.00%	30.22%	28.26%	*	48.71%	51.04%	*	15.32%	15.32%	*	5.75%	5.38%	100.00%	97.64%	97.67%
NH/OPI	*	14.67%	N/A	*	51.03%	N/A	*	24.59%	N/A	*	9.71%	N/A	100.00%	98.98%	N/A
White	44.00%	52.75%	47.28%	45.71%	38.06%	42.41%	6.29%	6.69%	7.27%	4.00%	2.50%	3.03%	100.00%	98.68%	98.28%
Hispanic	30.00%	32.35%	31.74%	40.00%	46.43%	48.60%	*	14.67%	13.66%	*	6.55%	6.00%	100.00%	97.14%	97.32%
ME	28.89%	33.26%	34.76%	53.33%	48.25%	47.75%	11.11%	13.47%	12.80%	6.67%	5.01%	4.70%	100.00%	98.15%	98.03%
EDS	25.37%	22.85%	21.47%	46.27%	49.71%	48.65%	19.40%	19.04%	20.31%	8.96%	8.40%	9.57%	100.00%	97.50%	96.44%
Not EDS	40.09%	51.44%	46.31%	50.00%	39.84%	43.15%	7.21%	6.42%	7.56%	2.70%	2.30%	2.98%	99.55%	98.61%	99.16%
SWD	7.14%	10.08%	9.29%	50.00%	37.10%	37.96%	21.43%	32.15%	31.20%	21.43%	20.67%	21.55%	100.00%	94.28%	93.60%
Non-SWD	41.70%	45.02%	40.09%	48.99%	45.12%	46.77%	8.10%	7.91%	9.98%	1.21%	1.95%	3.17%	99.60%	98.88%	98.75%
LEP	*	4.97%	3.12%	*	39.93%	38.06%	57.14%	37.14%	38.40%	42.86%	17.96%	20.42%	100.00%	94.25%	96.11%
Not LEP	37.59%	42.78%	39.95%	50.35%	44.25%	46.48%	8.87%	9.33%	9.68%	3.19%	3.64%	3.88%	99.65%	98.51%	98.23%
Migrant	18.75%	27.01%	17.29%	50.00%	50.34%	48.58%	*	16.44%	23.78%	*	6.21%	10.35%	100.00%	98.35%	98.50%
Not Migrant	37.73%	40.26%	36.97%	49.08%	43.61%	45.29%	9.52%	11.38%	12.26%	3.66%	4.74%	5.48%	99.64%	98.14%	97.94%
Female	50.37%	44.40%	39.45%	41.48%	43.41%	45.33%	5.93%	8.75%	10.85%	2.22%	3.44%	4.37%	100.00%	98.39%	98.31%
Male	24.68%	35.15%	32.09%	55.84%	44.37%	45.67%	13.64%	14.36%	15.08%	5.84%	6.13%	7.16%	99.35%	97.92%	97.66%

* Results cannot be published without releasing personally identifiable information based upon the EED reporting protocol

Writing: SBA Results Compared for Ocean View Elementary School, District and State Grades 3 Through 6															
	% Advanced Proficient			% Proficient			% Below Proficient			% Far Below Proficient			% Tested		
	School	District	State	School	District	State	School	District	State	School	District	State	School	District	State
All Students	37.85%	34.87%	30.49%	44.10%	44.25%	44.50%	*	18.78%	22.32%	*	2.10%	2.69%	99.31%	98.11%	97.96%
AF AM	*	20.71%	20.51%	57.14%	46.71%	48.68%	42.86%	28.71%	27.18%	*	3.88%	3.63%	100.00%	98.15%	97.71%
AKNA/AI	23.33%	17.15%	12.11%	60.00%	45.31%	41.05%	*	33.38%	40.69%	*	4.15%	6.15%	96.77%	96.51%	97.64%
Asian	50.00%	30.17%	28.49%	37.50%	45.92%	45.93%	*	21.33%	23.31%	*	2.58%	2.27%	100.00%	97.56%	97.67%
NH/OPI	*	14.02%	N/A	*	42.89%	N/A	*	39.38%	N/A	*	3.71%	N/A	100.00%	99.18%	N/A
White	44.25%	45.85%	40.04%	41.95%	41.91%	44.71%	*	11.26%	13.97%	*	0.99%	1.28%	99.43%	98.66%	98.22%
Hispanic	20.00%	27.33%	27.00%	40.00%	47.25%	48.36%	*	22.54%	22.23%	*	2.88%	2.41%	100.00%	97.07%	97.36%
ME	37.78%	28.51%	29.14%	42.22%	47.68%	47.29%	*	21.31%	21.37%	*	2.51%	2.20%	100.00%	98.15%	97.96%
EDS	22.39%	18.92%	17.53%	46.27%	47.34%	45.15%	*	29.95%	32.95%	*	3.79%	4.37%	100.00%	97.50%	96.53%
Not EDS	42.53%	45.99%	40.21%	43.44%	42.10%	44.01%	*	10.99%	14.35%	*	0.92%	1.44%	99.10%	98.54%	99.06%
SWD	16.67%	7.09%	6.94%	50.00%	38.82%	37.02%	*	45.96%	47.34%	*	8.12%	8.69%	100.00%	94.28%	93.97%
Non-SWD	41.46%	39.86%	34.45%	43.09%	45.23%	45.76%	*	13.89%	18.11%	*	1.02%	1.69%	99.19%	98.83%	98.66%
LEP	*	4.71%	3.14%	*	37.05%	30.66%	71.43%	50.57%	56.76%	*	7.67%	9.44%	100.00%	94.25%	96.18%
Not LEP	38.79%	37.55%	34.08%	44.84%	44.89%	46.32%	*	15.96%	17.79%	*	1.60%	1.81%	99.29%	98.47%	98.20%
Migrant	25.00%	21.44%	14.20%	56.25%	48.58%	42.55%	*	26.63%	38.57%	*	3.35%	4.68%	100.00%	98.51%	98.58%
Not Migrant	38.60%	35.46%	31.63%	43.38%	44.06%	44.64%	*	18.43%	21.18%	*	2.04%	2.55%	99.27%	98.09%	97.92%
Female	52.59%	42.63%	37.48%	37.78%	42.50%	43.42%	*	13.62%	17.40%	*	1.26%	1.70%	100.00%	98.32%	98.22%
Male	24.84%	27.36%	23.87%	49.67%	45.96%	45.52%	*	23.78%	26.98%	*	2.91%	3.63%	98.71%	97.90%	97.72%

* Results cannot be published without releasing personally identifiable information based upon the EED reporting protocol

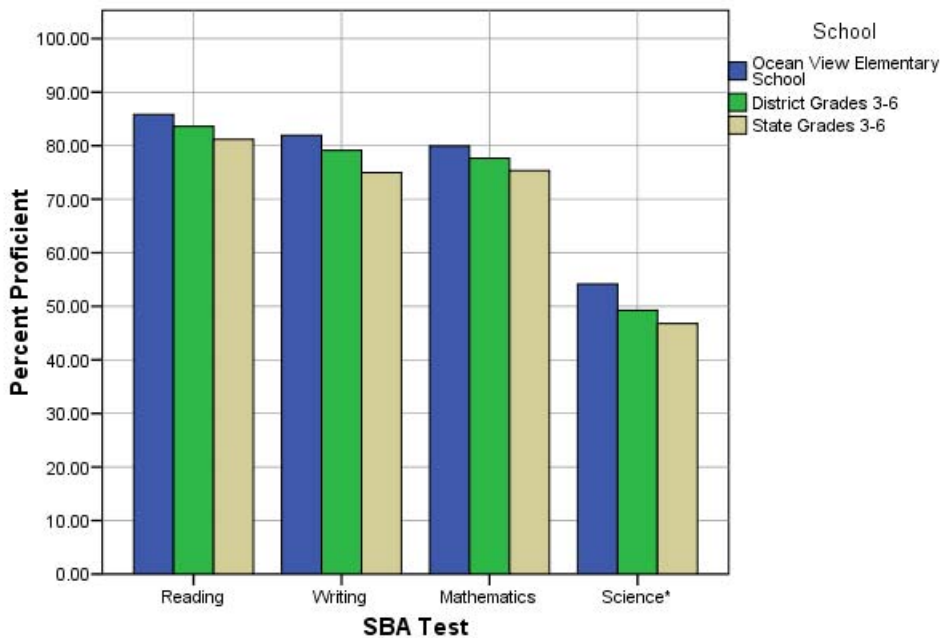
Mathematics: SBA Results Compared for Ocean View Elementary School, District and State Grades 3 Through 6															
	% Advanced Proficient			% Proficient			% Below Proficient			% Far Below Proficient			% Tested		
	School	District	State	School	District	State	School	District	State	School	District	State	School	District	State
All Students	34.26%	39.81%	36.08%	45.67%	37.84%	39.26%	12.11%	12.46%	13.78%	7.96%	9.88%	10.88%	99.66%	98.52%	98.12%
AF AM	*	19.48%	22.09%	85.71%	40.14%	41.60%	*	20.19%	18.61%	*	20.19%	17.70%	100.00%	98.38%	97.78%
AKNA/AI	13.33%	23.20%	18.26%	53.33%	39.51%	39.14%	20.00%	19.22%	21.79%	13.33%	18.07%	20.81%	96.77%	96.96%	97.72%
Asian	75.00%	37.02%	34.29%	*	41.20%	41.23%	*	13.76%	14.10%	*	8.03%	10.38%	100.00%	99.27%	98.99%
NH/OPI	*	18.52%	N/A	*	38.07%	N/A	*	20.16%	N/A	*	23.25%	N/A	100.00%	99.39%	N/A
White	42.29%	51.12%	45.75%	41.71%	35.15%	38.35%	9.14%	8.41%	9.81%	6.86%	5.32%	6.09%	100.00%	98.69%	98.17%
Hispanic	30.00%	31.85%	31.11%	45.00%	40.04%	42.19%	*	15.02%	15.10%	*	13.09%	11.60%	100.00%	98.66%	98.47%
ME	20.00%	33.75%	35.45%	60.00%	41.21%	40.61%	*	13.93%	13.30%	*	11.11%	10.64%	100.00%	98.26%	98.00%
EDS	19.40%	24.26%	23.31%	49.25%	41.50%	40.98%	17.91%	17.54%	18.60%	13.43%	16.70%	17.11%	100.00%	98.14%	96.77%
Not EDS	38.74%	50.70%	45.67%	44.59%	35.28%	37.96%	10.36%	8.91%	10.16%	6.31%	5.12%	6.21%	99.55%	98.79%	99.16%
SWD	14.29%	12.52%	12.06%	50.00%	31.53%	32.14%	11.90%	23.68%	23.60%	23.81%	32.27%	32.20%	100.00%	94.19%	93.99%
Non-SWD	37.65%	44.69%	40.12%	44.94%	38.97%	40.45%	12.15%	10.46%	12.13%	5.26%	5.88%	7.30%	99.60%	99.34%	98.85%
LEP	*	8.22%	6.05%	*	36.74%	34.10%	*	24.50%	27.43%	71.43%	30.54%	32.42%	100.00%	97.95%	97.56%
Not LEP	35.11%	42.73%	40.09%	46.45%	37.94%	39.95%	12.06%	11.35%	11.96%	6.38%	7.98%	8.01%	99.65%	98.57%	98.19%
Migrant	*	30.94%	22.37%	75.00%	43.65%	40.27%	*	14.21%	20.36%	*	11.20%	17.00%	100.00%	98.68%	98.54%
Not Migrant	35.53%	40.21%	37.05%	43.96%	37.58%	39.19%	12.45%	12.38%	13.31%	8.06%	9.83%	10.45%	99.64%	98.51%	98.09%
Female	42.22%	41.01%	36.83%	34.81%	38.32%	39.88%	15.56%	11.59%	13.34%	7.41%	9.09%	9.96%	100.00%	98.71%	98.31%
Male	27.27%	38.66%	35.38%	55.19%	37.38%	38.67%	9.09%	13.30%	14.20%	8.44%	10.66%	11.75%	99.35%	98.34%	97.94%

* Results cannot be published without releasing personally identifiable information based upon the EED reporting protocol

Science: SBA Results Compared for Ocean View Elementary School, District and State Grade 4															
	% Advanced Proficient			% Proficient			% Below Proficient			% Far Below Proficient			% Tested		
	School	District	State	School	District	State	School	District	State	School	District	State	School	District	State
All Students	26.39%	23.68%	22.1%	27.78%	25.57%	24.7%	33.33%	31.70%	31.3%	12.50%	19.06%	21.9%	100.00%	97.81%	95.35%
AF AM	*	9.18%	8.9%	*	18.84%	23.3%	*	39.13%	38.0%	*	32.85%	29.8%	100.00%	98.57%	94.49%
AKNA/AI	*	6.54%	6.8%	*	21.50%	14.2%	*	42.99%	35.2%	*	28.97%	43.8%	100.00%	96.40%	94.98%
Asian	*	10.18%	13.4%	*	21.40%	19.4%	*	39.30%	37.5%	*	29.12%	29.7%	100.00%	98.28%	97.39%
NH/OPI	*	6.57%	N/A	*	8.03%	N/A	*	34.31%	N/A	*	51.09%	N/A	100.00%	98.56%	N/A
White	30.61%	36.40%	32.3%	28.57%	29.08%	29.9%	*	25.33%	27.3%	*	9.19%	10.5%	100.00%	97.87%	94.97%
Hispanic	*	16.17%	18.2%	*	26.15%	26.0%	*	32.08%	33.9%	*	25.61%	21.9%	100.00%	97.12%	96.39%
ME	*	16.06%	18.5%	30.00%	26.12%	26.8%	30.00%	37.47%	35.9%	*	20.34%	18.7%	100.00%	98.32%	96.90%
EDS	*	8.34%	11.0%	*	22.44%	20.1%	30.00%	38.10%	34.7%	20.00%	31.12%	34.2%	100.00%	97.73%	94.99%
Not EDS	32.69%	35.00%	31.2%	23.08%	27.88%	28.5%	34.62%	26.97%	28.5%	9.62%	10.15%	11.9%	100.00%	97.87%	95.64%
SWD	*	8.38%	7.7%	*	16.38%	15.2%	35.71%	36.57%	36.6%	21.43%	38.67%	40.5%	100.00%	93.25%	91.70%
Non-SWD	29.31%	26.43%	24.7%	27.59%	27.22%	26.4%	32.76%	30.82%	30.4%	10.34%	15.53%	18.5%	100.00%	98.68%	96.04%
LEP	*	2.00%	1.5%	*	5.14%	3.8%	*	34.00%	28.3%	*	58.86%	66.5%	100.00%	96.15%	95.67%
Not LEP	27.14%	26.13%	25.2%	28.57%	27.88%	27.9%	34.29%	31.44%	31.8%	10.00%	14.55%	15.1%	100.00%	98.00%	95.30%
Migrant	*	9.70%	9.0%	*	26.87%	15.3%	*	39.55%	34.3%	*	23.88%	41.4%	100.00%	97.10%	97.32%
Not Migrant	27.54%	24.24%	23.0%	24.64%	25.51%	25.3%	34.78%	31.38%	31.1%	13.04%	18.86%	20.5%	100.00%	97.84%	95.21%
Female	27.27%	22.73%	20.8%	24.24%	25.78%	25.2%	36.36%	33.63%	32.6%	12.12%	17.87%	21.4%	100.00%	98.05%	95.43%
Male	25.64%	24.61%	23.4%	30.77%	25.36%	24.2%	30.77%	29.80%	30.1%	12.82%	20.23%	22.3%	100.00%	97.58%	95.27%

* Results cannot be published without releasing personally identifiable information based upon the EED reporting protocol

2007-08 SBA Results Compared for Ocean View Elementary School, District and State

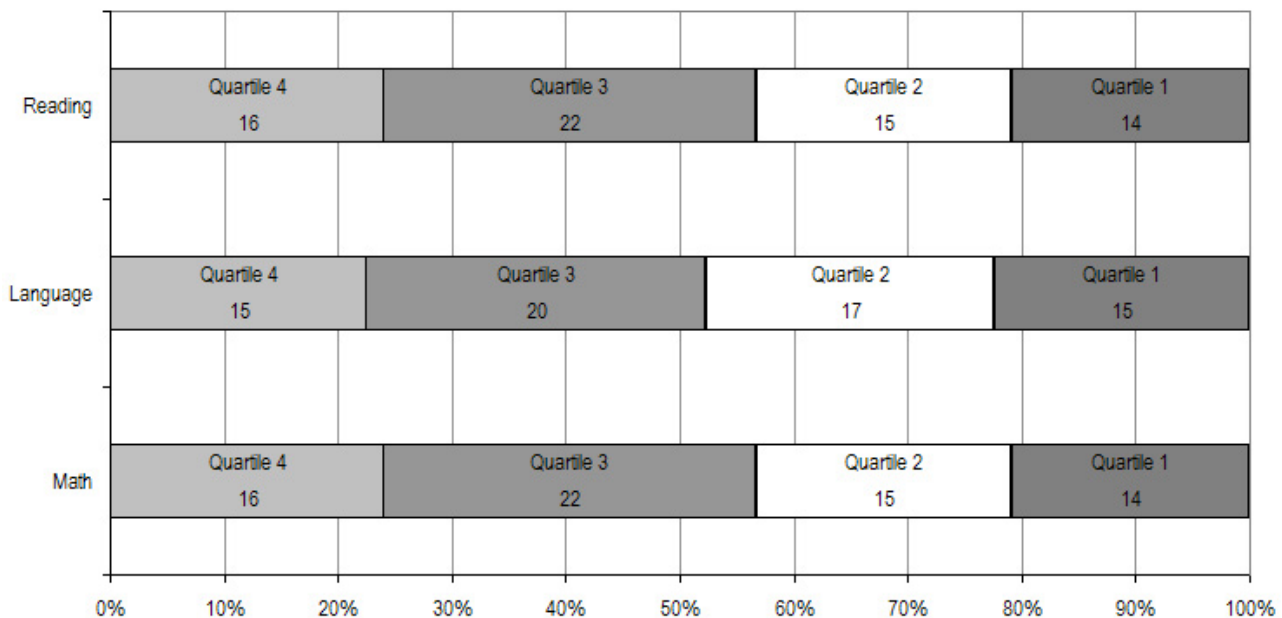


* 2007-08 was the first year Science was administered for grades 4, 8 and 10 on the SBA.

Ocean View Elementary School TerraNova Grade 5 Percent in Each Quartile								
Reading	Above Average		Average				Below Average	
	4th Quartile (76-99 percentile)		3rd Quartile (51-75 percentile)		2nd Quartile (26-50 percentile)		1st Quartile (1-25 percentile)	
	School	District	School	District	School	District	School	District
07-08	23.88%	25.65%	32.84%	24.08%	22.39%	23.73%	20.90%	26.55%
06-07	25.9%	33.1%	28.4%	26.1%	29.6%	23.6%	16.0%	17.2%
05-06	37.0%	30.4%	28.8%	26.8%	21.9%	24.5%	12.3%	18.3%
04-05	32.3%	29.2%	28.1%	27.6%	24.0%	24.5%	15.6%	18.7%
03-04	38.1%	30.6%	21.4%	26.9%	20.2%	24.2%	20.2%	18.3%
Language								
07-08	22.39%	26.79%	29.85%	27.20%	25.37%	24.12%	22.39%	21.89%
06-07	27.2%	34.7%	33.3%	26.9%	23.5%	21.4%	16.0%	17.0%
05-06	37.0%	34.0%	24.7%	26.5%	27.4%	22.0%	11.0%	17.5%
04-05	36.5%	32.1%	33.3%	28.3%	16.7%	21.2%	13.5%	18.4%
03-04	35.7%	34.1%	27.4%	26.5%	19.0%	21.7%	17.9%	17.7%
Mathematics								
07-08	23.88%	25.45%	32.84%	26.40%	22.39%	24.47%	20.90%	23.68%
06-07	25.3%	29.7%	31.6%	31.6%	26.6%	21.2%	16.5%	17.4%
05-06	41.1%	28.4%	24.7%	31.9%	23.3%	22.3%	11.0%	17.5%
04-05	31.3%	26.9%	38.5%	31.1%	17.7%	22.9%	12.5%	19.1%
03-04	32.1%	28.3%	29.8%	29.3%	20.2%	22.6%	17.9%	19.8%

The double bold line indicates a change from the TerraNova 2nd edition to the TerraNova 3rd edition.

2007-08 TerraNova 3rd Edition Grade 5 Percent and Count of Students in Each Quartile For Ocean View Elementary School



Climate Survey Results for Ocean View Elementary School

The Anchorage School District administered the School Climate and Connectedness Surveys in spring 2008 to students in grades 5-12, all school staff and parents/guardians of students in grades K-12. The surveys were done to provide schools with information about perceptions and experiences related to school climate for use in setting school goals and redirecting resources. In the spring of 2008 grades 3 and 4 students were involved in a pilot survey for measuring school climate and connectedness. The results are currently under review by the American Institutes for Research.

Respondents were asked to answer a series of questions that were related to a certain concept. For each item, there were five options from which to choose a response. The answer options ranged from strongly disagree (1) to strongly agree (5).

Student Survey Response Rate Grades 5-12			
	Ocean View Elementary School	Overall Elementary Schools	District**
# Surveys Completed	144	5,579	21,629
# Reportable Surveys	125	4,969	18,654
# Students Enrolled*	151	6,331	28,945
Reportable Response Rate	82.78%	78.49%	64.45%

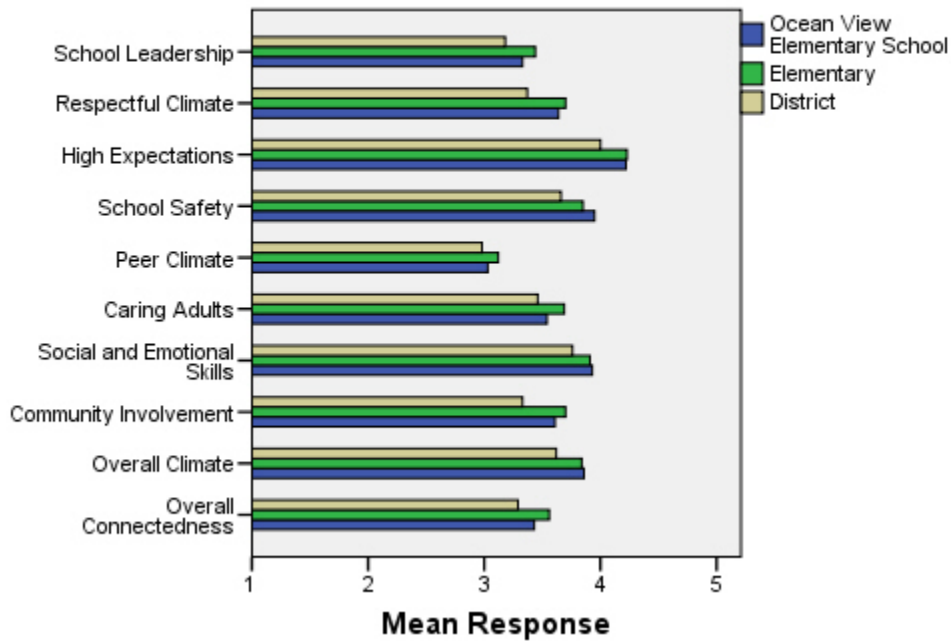
*Number enrolled as of April 1, 2008

**District data does not include KCC responses

Each question in the survey related to a factor or concept, and a score was calculated based on the mean response for the questions related to each factor. The factors measured in the survey were:

- **School Leadership and Student Involvement:** This factor reflects students' feelings about the decision making of school leaders as well as student participation in the school governance. Students selected responses between 1 and 5 where 1 indicates a low level of school leadership and student involvement and 5 indicates a high level of school leadership and student involvement.
- **Respectful Climate:** This factor reflects students' feelings about fairness of rules and respect for students' contributions. Students selected responses between 1 and 5 where 1 indicates a lack of a respectful climate and 5 indicates a highly respectful climate for students.
- **High Expectations:** This factor reflects students' feelings about their own expectations as well as those of adults in their school and community. Students selected responses between 1 and 5 where 1 indicates a lack of high expectations and 5 indicates a high level of high expectations.
- **School Safety:** This factor reflects students' feelings about bullies and gangs at school as well as general crime and violence in the community. Students selected responses between 1 and 5 where 1 indicates a low level of school safety and 5 indicates a high level of school safety.
- **Peer Climate:** This factor reflects students' feelings about how respectful students are to one another and how helpful students are to other students. Students selected responses between 1 and 5 where 1 indicates a more negative peer climate and 5 indicates a very positive peer climate at the school.
- **Caring Adults:** This factor reflects students' feelings about how close they feel to adults in the school. Students selected responses between 1 and 5 where 1 indicates a lack of caring adult relationships and 5 indicates strong caring adult relationships at the school.
- **Social and Emotional Learning:** This factor reflects students' ability to think about the consequences of their actions and to empathize with others. Students selected responses between 1 and 5 where 1 indicates that students at the school perceive themselves as having poorer social and emotional learning, and 5 indicates higher levels of social and emotional learning.
- **Community Involvement:** This factor reflects students' feelings about how supportive and welcoming the school is with parents and the community. Students selected responses between 1 and 5 where 1 indicates a less supportive and welcoming environment and 5 indicates a more supportive and welcoming environment.
- **Overall Climate:** The overall climate score was computed as the mean of three scales: school leadership, high expectations and school safety.
- **Overall Connectedness:** Overall connectedness score was computed as a mean of four scales: respectful climate, peer climate, caring adults and community involvement.

Climate and Connectedness Student Survey - Ocean View



Student Survey Mean Response by Factors Related to School Climate - Overall District			
	Ocean View Elementary School	Overall Elementary Schools	District
School Leadership	3.33	3.44	3.18
Respectful Climate	3.64	3.70	3.37
High Expectations	4.22	4.23	4.00
School Safety	3.95	3.85	3.66
Peer Climate	3.03	3.12	2.98
Caring Adults	3.54	3.69	3.46
Social and Emotional Skills	3.93	3.91	3.76
Community Involvement	3.61	3.70	3.33
Overall Climate	3.86	3.84	3.62
Overall Connectedness	3.43	3.56	3.29

Range is from a low of 1 to a high of 5

Students were also asked to answer questions related to school danger. The following table provides the responses for those questions:

Student Survey Results of the School Danger Questions - Percent of Students Responding in Each Category					
	0 Times	1-2 Times	3-6 Times	7-12 Times	> 12 Times
Ocean View Elementary School					
Under the influence of drugs?	84.55%	13.01%	1.63%	0.00%	0.81%
Under the influence of alcohol?	90.91%	5.79%	0.00%	1.65%	1.65%
Destroy things (vandalism)?	38.84%	39.67%	16.53%	2.48%	2.48%
Get into fights?	27.05%	33.61%	22.95%	9.02%	7.38%
Steal things?	50.00%	30.83%	14.17%	0.83%	4.17%
Threaten or bully?	37.70%	26.23%	10.66%	9.02%	16.39%
Under the influence of inhalants?	72.88%	16.95%	4.24%	0.85%	5.08%
Carry weapons?	79.51%	16.39%	2.46%	0.82%	0.82%
Overall Elementary Schools					
Under the influence of drugs?	91.87%	5.65%	1.22%	0.31%	0.96%
Under the influence of alcohol?	91.42%	6.01%	1.16%	0.51%	0.90%
Destroy things (vandalism)?	46.82%	32.08%	12.45%	3.30%	5.36%
Get into fights?	22.32%	35.75%	22.56%	7.96%	11.41%
Steal things?	49.79%	27.92%	12.01%	4.33%	5.95%
Threaten or bully?	32.34%	28.83%	17.08%	7.78%	13.97%
Under the influence of inhalants?	71.03%	17.07%	6.14%	2.63%	3.12%
Carry weapons?	79.22%	15.35%	3.17%	0.59%	1.68%
District					
Under the influence of drugs?	60.45%	15.05%	9.54%	3.92%	11.04%
Under the influence of alcohol?	63.11%	16.37%	8.90%	4.43%	7.19%
Destroy things (vandalism)?	41.26%	29.47%	15.45%	5.88%	7.94%
Get into fights?	26.40%	35.20%	21.96%	7.11%	9.33%
Steal things?	44.80%	25.68%	13.81%	6.98%	8.74%
Threaten or bully?	32.21%	26.21%	16.68%	9.27%	15.63%
Under the influence of inhalants?	72.79%	14.21%	5.66%	2.48%	4.87%
Carry weapons?	69.45%	19.15%	5.34%	2.01%	4.06%

Student Survey Results of the Mean Factor Score by Ethnicity (Self-Reported)							
	AKNA/AI	AF AM/Black	Hispanic	Asian/NH	White	Other	Multi-Ethnic
Ocean View Elementary School							
School Leadership	3.29	3.80	3.00	3.75	3.33	3.44	3.24
Respectful Climate	3.75	3.80	3.42	4.17	3.59	3.63	3.56
High Expectations	4.25	4.00	4.02	4.23	4.29	4.03	4.19
School Safety	4.01	3.63	4.23	4.25	3.87	3.98	3.92
Peer Climate	3.27	3.00	2.95	3.60	2.92	3.03	2.74
Caring Adults	3.47	3.86	3.29	4.04	3.53	3.46	3.56
Social and Emotional Skills	4.07	3.71	3.64	4.19	3.93	4.15	3.83
Community Involvement	3.63	4.00	3.26	3.69	3.59	3.68	3.54
Overall Climate	3.85	3.76	3.76	4.06	3.88	3.86	3.80
Overall Connectedness	3.55	3.62	3.24	3.99	3.42	3.31	3.23
Overall Elementary Schools							
School Leadership	3.56	3.50	3.52	3.55	3.37	3.44	3.42
Respectful Climate	3.75	3.60	3.66	3.72	3.71	3.69	3.63
High Expectations	4.12	4.23	4.23	4.22	4.26	4.19	4.25
School Safety	3.75	3.63	3.73	3.68	4.03	3.66	3.79
Peer Climate	3.12	2.94	3.12	3.18	3.16	3.05	3.05
Caring Adults	3.64	3.73	3.64	3.59	3.74	3.60	3.76
Social and Emotional Skills	3.86	3.84	3.91	3.95	3.93	3.90	3.89
Community Involvement	3.66	3.60	3.67	3.66	3.75	3.66	3.70
Overall Climate	3.81	3.79	3.84	3.81	3.89	3.76	3.82
Overall Connectedness	3.56	3.49	3.51	3.53	3.60	3.49	3.56
District							
School Leadership	3.33	3.14	3.19	3.28	3.14	3.17	3.15
Respectful Climate	3.48	3.18	3.32	3.39	3.39	3.37	3.33
High Expectations	3.98	3.94	3.96	4.02	4.02	4.00	4.01
School Safety	3.60	3.48	3.55	3.47	3.78	3.51	3.62
Peer Climate	3.01	2.85	2.94	3.05	3.00	2.92	2.93
Caring Adults	3.49	3.43	3.37	3.33	3.51	3.42	3.46
Social and Emotional Skills	3.73	3.66	3.73	3.81	3.78	3.75	3.74
Community Involvement	3.37	3.22	3.31	3.29	3.34	3.34	3.31
Overall Climate	3.64	3.52	3.57	3.59	3.65	3.56	3.60
Overall Connectedness	3.33	3.17	3.24	3.26	3.31	3.26	3.27

The response rate is not high enough to provide statistically reliable results for Ocean View Elementary School's Staff Survey Results.

Parent/Guardian Survey Response Rate			
	Ocean View Elementary School	Overall Elementary Schools	District**
# Surveys Completed	71	3,933	7,415
# Primary Guardians*	472	23,668	48,693
Response Rate	15.04%	16.62%	15.23%

*Number students enrolled as of April 1, 2008 without dual guardians included

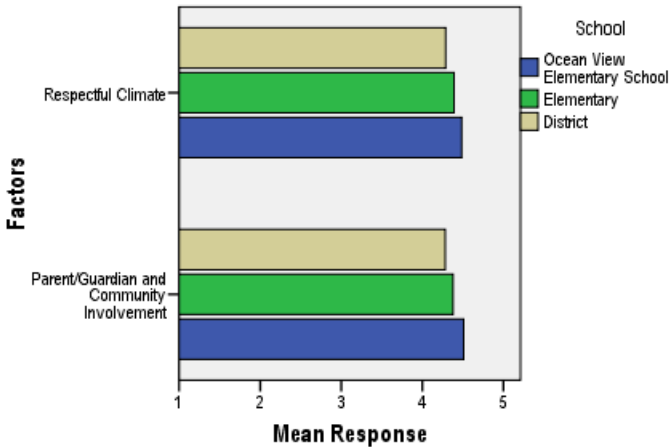
**District data

- 1) does not include KCC responses;
- 2) does include responses without a school designation

Two factors are calculated from the Parent/Guardian Survey. All results other than the factor scores below are reported by individual question: questions in the graphs are condensed phrases from the full question, while questions in the tables are the full question.

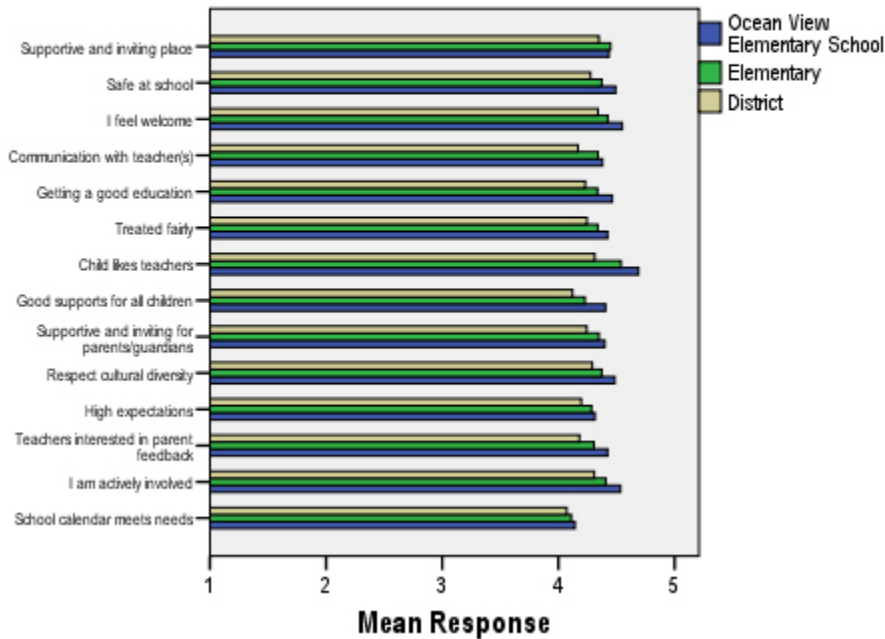
- **Respectful Climate:** This factor is calculated by determining the mean of five questions: 1) My child’s school is a supportive and inviting place, 2) I feel welcome at this school, 3) I am satisfied with communication with my child’s teacher(s), 4) This school is a supportive and inviting place for parents/guardians and 5) Adults at this school respect cultural diversity.
- **Parent/Guardian and Community Involvement:** This factor is calculated by determining the mean of five questions: 1) I feel welcome at this school, 2) This school is a supportive and inviting place for parents/guardians, 3) Adults at this school respect cultural diversity, 4) Teacher’s at my child’s school are interested in what I have to say and 5) I feel like I am actively involved in my child’s education.

Parent/Guardian Survey Mean Factor Scores (Range is from a low of 1 to a high of 5)



Parent/Guardian Factor Scores			
	Ocean View Elementary School	Overall Elementary Schools	District
Respectful Climate	4.48	4.39	4.29
Parent/Guardian and Community Involvement	4.51	4.38	4.28

Climate and Connectedness Parent/Guardian Survey - Ocean View



Parent/Guardian Mean Response by Questions Related to School Climate - Overall

	Ocean View Elementary School	Overall Elementary Schools	District
My child's school is a supportive and inviting place	4.44	4.45	4.35
My child is safe at school	4.49	4.37	4.28
I feel welcome at this school	4.55	4.43	4.34
I am satisfied with communication with my child's teacher(s)	4.38	4.34	4.17
My child is getting a good education at this school	4.46	4.34	4.23
My child is treated fairly at school	4.42	4.34	4.25
My child likes his/her teachers	4.69	4.54	4.31
At this school, there are good supports for all children, including children with learning disabilities	4.41	4.23	4.12
This school is a supportive and inviting place for parents/guardians	4.40	4.35	4.24
Adults at this school respect cultural diversity	4.48	4.37	4.29
Adults at this school have high expectations of my child	4.31	4.29	4.20
Teachers at my child's school are interested in what I have to say	4.42	4.31	4.18
I feel like I am actively involved in my child's education	4.54	4.41	4.31
The district's school calendar meets the needs of my child and our family	4.14	4.11	4.07

Range is from a low of 1 to a high of 5

Parent/Guardian Mean Response by Questions Related to School Climate by Ethnicity (Self-Reported)							
Ocean View Elementary School	AF AM	AKNA/AI	Asian/NH	White	Hispanic	ME	Other
My child's school is a supportive and inviting place	4.50	4.80	4.75	4.36	***	4.75	4.00
My child is safe at school	4.50	5.00	5.00	4.40	***	4.75	4.00
I feel welcome at this school	4.50	4.80	4.75	4.49	***	4.75	4.00
I am satisfied with communication with my child's teacher(s)	4.50	5.00	4.50	4.28	***	4.75	4.00
My child is getting a good education at this school	4.50	5.00	5.00	4.38	***	4.50	5.00
My child is treated fairly at school	4.50	5.00	4.50	4.34	***	4.75	4.00
My child likes his/her teachers	4.50	5.00	5.00	4.64	***	4.75	4.00
At this school, there are good supports for all children, including children with learning disabilities	4.50	4.80	5.00	4.26	***	4.50	5.00
This school is a supportive and inviting place for parents/guardians	4.50	4.80	4.75	4.31	***	4.50	4.00
Adults at this school respect cultural diversity	4.00	4.80	5.00	4.43	***	4.25	4.00
Adults at this school have high expectations of my child	4.50	5.00	4.67	4.19	***	4.50	4.00
Teachers at my child's school are interested in what I have to say	4.50	4.80	4.75	4.32	***	4.75	5.00
I feel like I am actively involved in my child's education	4.50	4.80	4.50	4.49	***	4.50	5.00
The district's school calendar meets the needs of my child and our family	4.50	4.80	4.67	4.02	***	4.25	4.00
Overall Elementary Schools							
My child's school is a supportive and inviting place	4.36	4.47	4.44	4.47	4.51	4.46	4.26
My child is safe at school	4.40	4.42	4.36	4.38	4.42	4.35	4.23
I feel welcome at this school	4.38	4.37	4.48	4.44	4.47	4.49	4.27
I am satisfied with communication with my child's teacher(s)	4.30	4.40	4.36	4.35	4.45	4.35	4.19
My child is getting a good education at this school	4.28	4.40	4.40	4.33	4.44	4.38	4.04
My child is treated fairly at school	4.15	4.34	4.32	4.38	4.37	4.33	4.14
My child likes his/her teachers	4.41	4.52	4.53	4.57	4.47	4.55	4.49
At this school, there are good supports for all children, including children with learning disabilities	4.06	4.32	4.31	4.22	4.31	4.31	4.05
This school is a supportive and inviting place for parents/guardians	4.22	4.31	4.38	4.36	4.42	4.44	4.11
Adults at this school respect cultural diversity	4.25	4.28	4.27	4.43	4.38	4.39	4.19
Adults at this school have high expectations of my child	4.26	4.30	4.27	4.31	4.36	4.28	3.95
Teachers at my child's school are interested in what I have to say	4.25	4.35	4.24	4.33	4.39	4.31	4.16
I feel like I am actively involved in my child's education	4.48	4.38	4.31	4.45	4.40	4.40	4.20
The district's school calendar meets the needs of my child and our family	4.25	4.22	4.19	4.10	4.20	4.08	3.62
District							
My child's school is a supportive and inviting place	4.20	4.37	4.37	4.37	4.41	4.37	4.20
My child is safe at school	4.18	4.31	4.31	4.29	4.29	4.30	4.11
I feel welcome at this school	4.18	4.31	4.36	4.36	4.38	4.40	4.23
I am satisfied with communication with my child's teacher(s)	3.99	4.21	4.23	4.16	4.32	4.20	4.03
My child is getting a good education at this school	4.09	4.28	4.31	4.23	4.33	4.26	4.03
My child is treated fairly at school	3.94	4.21	4.24	4.29	4.30	4.24	4.08
My child likes his/her teachers	4.06	4.33	4.35	4.33	4.31	4.34	4.20
At this school, there are good supports for all children, including children with learning disabilities	3.90	4.19	4.23	4.11	4.24	4.18	3.97
This school is a supportive and inviting place for parents/guardians	4.05	4.21	4.29	4.26	4.31	4.31	4.05
Adults at this school respect cultural diversity	4.02	4.20	4.22	4.34	4.29	4.31	4.17
Adults at this school have high expectations of my child	4.05	4.24	4.21	4.21	4.26	4.20	3.94
Teachers at my child's school are interested in what I have to say	4.04	4.22	4.17	4.20	4.28	4.19	4.05
I feel like I am actively involved in my child's education	4.36	4.29	4.24	4.33	4.37	4.30	4.20
The district's school calendar meets the needs of my child and our family	4.18	4.19	4.16	4.06	4.21	4.02	3.66

Range is from a low of 1 to a high of 5

***Results can not be calculated because of missing responses