

### Orion Elementary School Overview

#### Statement of Program

The mission of Orion Elementary School is to ensure optimal learning and safety for all and help make respect, courtesy, and consideration for others a common practice.

Orion is located on Elmendorf Air Force Base within the Anchorage School District. Approximately 410 students in preschool through sixth grade attend Orion and are taught by 17 regular classroom teachers and two preschool teachers. Students attend physical education, art, health, music, and library classes throughout the week. Special education, speech, and bilingual classes are also available. Orion shares a counselor with the two other base schools.

Orion has a full-time nurse available, a fine office staff and a building plant operator who all work together to assist in the smooth running of the school. Our kindergarten and special education teacher assistants are available for student support. Our noon staff assists at lunchtime and recess; their services perform a vital contribution to the safety of our students. Our very active PTA assists with fund-raising, pictures, yearbook, and a multitude of other functions. School business partnerships enrich our connection with the community.

Parent and community involvement, participation and support of our exceptional teaching and classified staff are key ingredients to Orion's fine educational program and positive learning environment.

From the School Report Card

School Goals	
Goal	Level of Achievement
Scores for students in grades 3-6 will independently remain higher than or show gains toward the district averages in state assessments. Ninety-five percent of students in grades 1-6 will improve on the math inventory from pre to post-assessment. All kindergarten students will recognize numbers 0-20 or show at least a 50 percent improvement from their initial assessment.	Attained
The number of students rated proficient on the state reading assessment's "Forming a General Understanding" standard will increase from 82 to 84 percent.	Attained

From the School Report Card

Budget*	
2006-07 Actual Expenditures	\$1,932,044
2007-08 Revised Budgeted Amount	\$2,458,903
2008-09 Proposed Budget	\$2,711,587

\*Dollars budgeted or expended are general fund only  
From IFAS

Orion Elementary School Characteristics			
	School	District	Source of Information
Membership	402	48,858	Fall OASIS
Capacity	78.66%	N/A	2008-18 ASD Capital Improvement Plan
Attendance Rate	95.70%	92.83%	NCLB Summer Data Collection
Retention Rate K-8	1.03%	0.60%	SMS and NCLB Summer Data Collection
Transiency Rate	31.07%	26.07%	NCLB Summer Data Collection
Economically Disadvantaged	103	17,717	Fall OASIS
Average Weekly Volunteer Hours	76	4,660	Department of Education Report Card Report
Students Taking the Alternate Assessment	1	228	SMS
Change in Enrollment	2.55%	-0.76%	Fall Oasis

Teacher Qualification				
Number of Teachers	Percent Fully Licensed	Percent With Advanced Degrees	Number Nationally Board Certified	Percent of Classes Taught by "Highly Qualified Teachers"
31	100.00%	32.25%	0	100.00%

Orion Elementary School Business Partnerships
Burger King, Elmendorf Air Force Base; Port of Anchorage

From the School Report Card

Ethnicity Report							
African-American/Black	Alaska Native/American Indian	Asian	Native Hawaiian/Other Pacific Islander	White	Hispanic	Multi-Ethnic	Total
42	6	7	6	275	35	31	402

From Fall Oasis

Full Academic Year		
Students Enrolled	Students Enrolled for FAY	Percent FAY
422	359	85.07%

From participation file (Grades 3-10)

**Orion Elementary School  
2007-08 Adequate Yearly Progress  
Status Report**

Meets AYP

AMO For Language Arts: 77.18%  
AMO For Mathematics: 66.09%

Group	Participation Rate				"FAY" (D) Tested & Enrolled "FAY"	Language Arts Performance				Mathematics Performance			
	(A) Number Enrolled	(B) Number Tested	Participation Rate (%)	(C) Participation Rate Met		(E) Proficient on LA	(F) Percent Proficient on LA	(G) LA Target	(H) Met AMO for LA	(I) Proficient on Mathematics	(J) Percent Proficient in Mathematics	(K) Mathematics Target	(L) Met AMO for Mathematics
All Students	204	204	100%	Yes	176	156	88.6%	69.8%	Yes	152	86.4%	57.8%	Yes
AF AM	17	17	N/A	N/A	N/A	N/A	N/A	N/A	N/A	N/A	N/A	N/A	N/A
AKNA/AI	<5	<5	N/A	N/A	N/A	N/A	N/A	N/A	N/A	N/A	N/A	N/A	N/A
Asian/NH/OPI	9	9	N/A	N/A	N/A	N/A	N/A	N/A	N/A	N/A	N/A	N/A	N/A
White	140	140	100%	Yes	124	109	87.9%	68.4%	Yes	110	88.7%	56.2%	Yes
Hispanic	23	23	100%	Yes	N/A	N/A	N/A	N/A	N/A	N/A	N/A	N/A	N/A
ME	14	14	N/A	N/A	N/A	N/A	N/A	N/A	N/A	N/A	N/A	N/A	N/A
EDS	56	56	100%	Yes	47	38	80.9%	62.9%	Yes	39	83%	50%	Yes
SWD	27	27	100%	Yes	N/A	N/A	N/A	N/A	N/A	N/A	N/A	N/A	N/A
LEP	5	5	N/A	N/A	N/A	N/A	N/A	N/A	N/A	N/A	N/A	N/A	N/A

Attendance Rate: Met

95.7% (Threshold is 85%)

N/A is used to indicate:

- (1) Subgroups with 20 or fewer students enrolled on the first day of testing shall not be included in participation rate calculation.
- (2) Subgroups with 25 or fewer students enrolled for the "full academic year" shall not have the performance score computed.

\* For the groups where the number enrolled is less than or equal to 40, participation is met when no more than two miss the test. Groups can also meet this target using the average of the past two or three years.

\*\* When a group achieves a "Yes" without meeting the listed target, it has done so using either the 99% confidence interval or Safe Harbor.

\*\*\* The results cannot be published without releasing personally identifiable information based upon the EED reporting protocol.

This document was prepared by the ASD Assessment and Evaluation Department.

7/10/2008

Orion Elementary School  
2007-08 Adequate Yearly Progress  
Growth Report

The AYP growth reports are generated by the Alaska State Department of Education and Early Development. The reports can be found online at: [http://www.asdk12.org/depts/assess\\_eval/AYP/State\\_AS\\_D\\_AYG\\_0708.pdf](http://www.asdk12.org/depts/assess_eval/AYP/State_AS_D_AYG_0708.pdf)

SBA Proficiency Comparison by Grade for Orion Elementary School																
	Reading Percent Proficient				Writing Percent Proficient				Mathematics Percent Proficient				Science* Percent Proficient			
	04-05	05-06	06-07	07-08	04-05	05-06	06-07	07-08	04-05	05-06	06-07	07-08	04-05	05-06	06-07	07-08
All Students	84.43%	84.66%	86.60%	89.16%	82.63%	83.52%	82.90%	87.19%	82.63%	77.84%	84.46%	85.71%	N/A	N/A	N/A	77.78%
Grade 3	82.22%	78.85%	87.50%	86.15%	82.22%	78.85%	89.58%	83.08%	88.89%	75.00%	95% or more	90.77%	N/A	N/A	N/A	N/A
Grade 4	91.49%	90.70%	83.93%	95% or more	85.11%	86.05%	73.21%	95% or more	82.98%	86.05%	73.21%	93.33%	N/A	N/A	N/A	77.78%
Grade 5	89.74%	90.70%	91.30%	82.46%	89.74%	88.37%	86.96%	80.70%	89.74%	81.40%	91.30%	73.68%	N/A	N/A	N/A	N/A
Grade 6	72.22%	78.95%	84.09%	90% or more	72.22%	81.58%	83.72%	90% or more	66.67%	68.42%	79.07%	86.11%	N/A	N/A	N/A	N/A

\* 2007-08 was the first year Science was administered for grades 4, 8 and 10 on the SBA.

SBA Proficient & Not Proficient by NCLB Groups for Orion Elementary School								
	Reading		Writing		Mathematics		Science**	
	Percent Proficient	Percent Not Proficient	Percent Proficient	Percent Not Proficient	Percent Proficient	Percent Not Proficient	Percent Proficient	Percent Not Proficient
All Students	89.16%	10.84%	87.19%	12.81%	85.71%	14.29%	77.78%	22.22%
AF AM	81.25%	18.75%	75.00%	25.00%	62.50%	37.50%	*	*
AKNA/AI	*	*	*	*	*	*	*	*
Asian	60% or more	40% or fewer	60% or more	40% or fewer	60% or more	40% or fewer	*	*
NH/OPI	*	*	*	*	*	*	*	*
White	89.29%	10.71%	87.86%	12.14%	89.29%	10.71%	85.71%	14.29%
Hispanic	90% or more	10% or fewer	90% or more	10% or fewer	90% or more	10% or fewer	*	*
ME	80% or more	20% or fewer	80% or more	20% or fewer	71.43%	28.57%	*	*
EDS	85.71%	14.29%	82.14%	17.86%	83.93%	16.07%	64.29%	35.71%
Non-EDS	90.48%	9.52%	89.12%	10.88%	86.39%	13.61%	83.87%	16.13%
SWD	63.64%	36.36%	54.55%	45.45%	63.64%	36.36%	*	*
Non-SWD	92.27%	7.73%	91.16%	8.84%	88.40%	11.60%	77.27%	22.73%
LEP	*	*	*	*	*	*	*	*
Not LEP	89.45%	10.55%	87.44%	12.56%	85.93%	14.07%	81.40%	18.60%
Migrant	*	*	*	*	*	*	*	*
Not Migrant	89.16%	10.84%	87.19%	12.81%	85.71%	14.29%	77.78%	22.22%
Female	93.62%	6.38%	91.49%	8.51%	89.36%	10.64%	71.43%	28.57%
Male	85.32%	14.68%	83.49%	16.51%	82.57%	17.43%	83.33%	16.67%

\* Results cannot be published without releasing personally identifiable information based upon the EED reporting protocol

\*\* 2007-08 was the first year Science was administered for grades 4, 8 and 10 on the SBA.

SBA Mean Scale Score Comparison by NCLB Groups for Orion Elementary School								
	Reading		Writing		Mathematics		Science***	
	06-07	07-08	06-07	07-08	06-07	07-08	06-07	07-08
All Students	379.31	391.28	378.58	387.23	371.46	376.02	N/A	334.22
AF AM	354.19	357.56	370.95	360.19	361.29	338.94	N/A	*
AKNA/AI	*	*	*	*	*	*	N/A	*
Asian**	*	371.20	*	388.40	*	362.80	N/A	*
NH/OPI**	N/A**	*	N/A**	*	N/A**	*	N/A	*
White	384.32	397.02	381.82	388.96	378.40	381.66	N/A	343.40
Hispanic	351.70	397.57	352.70	408.17	334.60	389.22	N/A	*
ME	383.61	379.71	375.89	379.50	348.33	357.07	N/A	*
EDS	374.00	376.00	375.78	379.89	367.35	365.80	N/A	316.21
Non-EDS	382.89	397.10	380.47	390.03	374.25	379.92	N/A	342.35
SWD	319.38	311.23	328.58	300.95	325.71	323.05	N/A	*
Non-SWD	387.78	401.01	385.67	397.72	377.96	382.46	N/A	334.59
LEP	*	*	*	*	*	*	N/A	*
Not LEP	380.63	391.99	380.14	387.04	372.73	375.85	N/A	340.00
Migrant	*	*	*	*	*	*	N/A	*
Not Migrant	379.31	391.28	378.58	387.23	371.46	376.02	N/A	334.22
Female	385.19	396.03	389.98	407.88	366.49	376.39	N/A	316.57
Male	374.23	387.17	368.82	369.42	375.71	375.71	N/A	349.67

\* Results cannot be published without releasing personally identifiable information based upon the EED reporting protocol

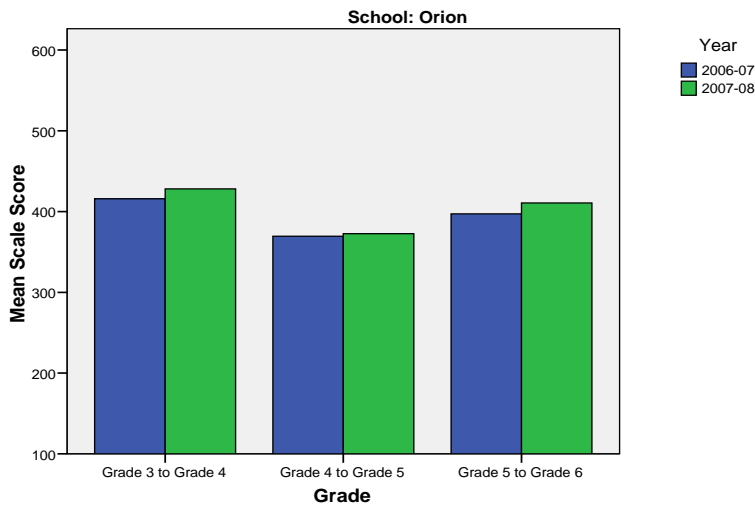
\*\* Prior to 2007-08 the Asian category includes Native Hawaiian/Other Pacific Islander. In 2007-08 Native Hawaiian/Other Pacific Islander is a separate ethnic category.

\*\*\* 2007-08 was the first year Science was administered for grades 4, 8 and 10 on the SBA.

Orion Elementary School SBA Change Average Scale Score by NCLB Groups: Reading									
	Average Scale Score of Students Tested in District Both Years			Average Scale Score of Students Tested in District Both Years			Average Scale Score of Students Tested in District Both Years		
	Grade 3 in 06-07	Grade 4 in 07-08	Difference	Grade 4-in 06-07	Grade 5 in 07-08	Difference	Grade 5-in 06-07	Grade 6 in 07-08	Difference
All Students	415.82	427.97	12.15	369.36	372.64	3.27	397.11	410.52	13.41
AF AM	*	*	*	357.20	360.20	3.00	*	*	*
AKNA/AI	*	*	*	*	*	*	*	*	*
Asian	*	*	*	*	*	*	*	*	*
NH/OPI	*	*	*	*	*	*	*	*	*
White	428.56	438.40	9.84	366.00	368.89	2.89	411.42	417.47	6.05
Hispanic	*	*	*	399.40	412.00	12.60	*	*	*
ME	*	*	*	*	*	*	*	*	*
EDS	394.63	400.38	5.75	346.80	350.40	3.60	326.40	339.60	13.20
Non-EDS	422.60	436.80	14.20	376.00	379.18	3.18	413.18	426.64	13.45
SWD	*	*	*	289.17	299.33	10.17	*	*	*
Non-SWD	415.82	427.97	12.15	382.03	384.21	2.18	408.04	420.40	12.36
LEP	*	*	*	*	*	*	*	*	*
Not LEP	423.52	435.55	12.03	369.36	372.64	3.27	397.11	410.52	13.41
Migrant	*	*	*	*	*	*	*	*	*
Not Migrant	415.82	427.97	12.15	369.36	372.64	3.27	397.11	410.52	13.41
Female	404.31	402.00	-2.31	391.38	399.63	8.25	428.75	441.67	12.92
Male	423.30	444.85	21.55	356.79	357.21	0.43	371.80	385.60	13.80

\* Results cannot be published without releasing personally identifiable information based upon the EED reporting protocol

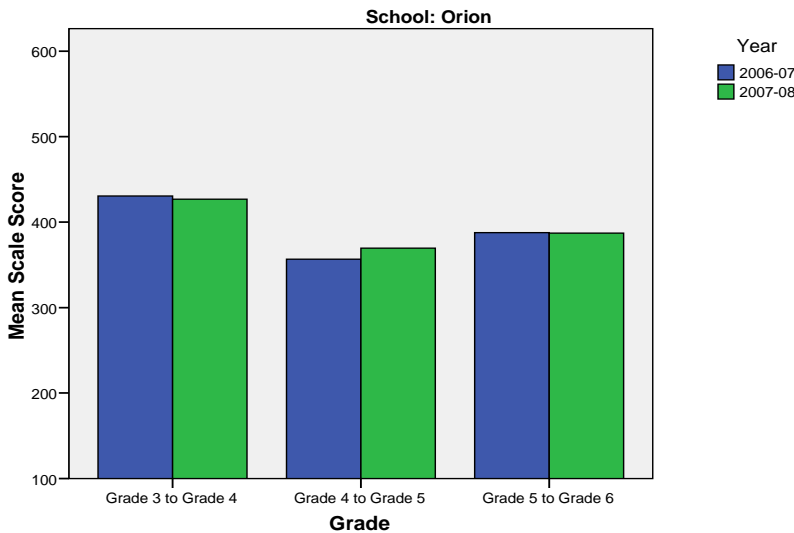
**Change in Mean Scale Score in SBA Reading by Grade Between 2006-07 and 2007-08**



Orion Elementary School SBA Change Average Scale Score by NCLB Groups: Writing									
	Average Scale Score of Students Tested in District Both Years			Average Scale Score of Students Tested in District Both Years			Average Scale Score of Students Tested in District Both Years		
	Grade 3 in 06-07	Grade 4 in 07-08	Difference	Grade 4- in 06-07	Grade 5 in 07-08	Difference	Grade 5- in 06-07	Grade 6 in 07-08	Difference
All Students	430.64	426.79	-3.85	356.57	369.50	12.93	387.56	387.04	-0.52
AF AM	*	*	*	376.20	364.00	-12.20	*	*	*
AKNA/AI	*	*	*	*	*	*	*	*	*
Asian	*	*	*	*	*	*	*	*	*
NH/OPI	*	*	*	*	*	*	*	*	*
White	439.44	430.84	-8.60	343.85	357.70	13.85	402.26	402.84	0.58
Hispanic	*	*	*	356.80	420.40	63.60	*	*	*
ME	*	*	*	*	*	*	*	*	*
EDS	415.13	416.88	1.75	351.30	354.30	3.00	306.20	310.20	4.00
Non-EDS	435.60	429.96	-5.64	358.12	373.97	15.85	406.05	404.50	-1.55
SWD	*	*	*	306.67	279.33	-27.33	*	*	*
Non-SWD	430.64	426.79	-3.85	364.45	383.74	19.29	399.88	400.64	0.76
LEP	*	*	*	*	*	*	*	*	*
Not LEP	435.74	431.74	-4.00	356.57	369.50	12.93	387.56	387.04	-0.52
Migrant	*	*	*	*	*	*	*	*	*
Not Migrant	430.64	426.79	-3.85	356.57	369.50	12.93	387.56	387.04	-0.52
Female	432.08	422.23	-9.85	378.88	406.00	27.13	428.42	430.25	1.83
Male	429.70	429.75	0.05	343.82	348.64	4.82	354.87	352.47	-2.40

\* Results cannot be published without releasing personally identifiable information based upon the EED reporting protocol

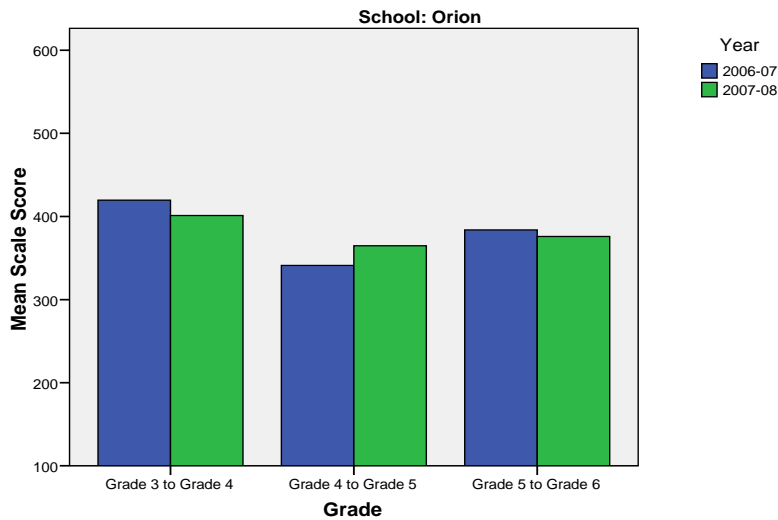
**Change in Mean Scale Score in SBA Writing by Grade between 2006-07 and 2007-08**



Orion Elementary School SBA Change Average Scale Score by NCLB Groups: Mathematics									
	Average Scale Score of Students Tested in District Both Years			Average Scale Score of Students Tested in District Both Years			Average Scale Score of Students Tested in District Both Years		
	Grade 3 in 06-07	Grade 4 in 07-08	Difference	Grade 4- in 06-07	Grade 5 in 07-08	Difference	Grade 5- in 06-07	Grade 6 in 07-08	Difference
All Students	419.55	401.18	-18.36	341.07	364.68	23.61	383.81	375.81	-8.00
AF AM	*	*	*	343.80	347.60	3.80	*	*	*
AKNA/AI	*	*	*	*	*	*	*	*	*
Asian	*	*	*	*	*	*	*	*	*
NH/OPI	*	*	*	*	*	*	*	*	*
White	429.40	410.20	-19.20	336.59	356.22	19.63	395.42	388.16	-7.26
Hispanic	*	*	*	354.20	437.20	83.00	*	*	*
ME	*	*	*	*	*	*	*	*	*
EDS	390.25	376.88	-13.38	321.40	354.60	33.20	332.60	326.00	-6.60
Non-EDS	428.92	408.96	-19.96	346.85	367.65	20.79	395.45	387.14	-8.32
SWD	*	*	*	279.67	288.33	8.67	*	*	*
Non-SWD	419.55	401.18	-18.36	350.76	376.74	25.97	392.52	384.32	-8.20
LEP	*	*	*	*	*	*	*	*	*
Not LEP	426.77	408.61	-18.16	341.07	364.68	23.61	383.81	375.81	-8.00
Migrant	*	*	*	*	*	*	*	*	*
Not Migrant	419.55	401.18	-18.36	341.07	364.68	23.61	383.81	375.81	-8.00
Female	402.77	369.23	-33.54	352.38	376.69	24.31	412.58	406.42	-6.17
Male	430.45	421.95	-8.50	334.61	357.82	23.21	360.80	351.33	-9.47

\* Results cannot be published without releasing personally identifiable information based upon the EED reporting protocol

**Change in Mean Scale Score in SBA Mathematics by Grade between 2006-07 and 2007-08**



Reading: SBA Results Compared for Orion Elementary School, District and State Grades 3 Through 6															
	% Advanced Proficient			% Proficient			% Below Proficient			% Far Below Proficient			% Tested		
	School	District	State	School	District	State	School	District	State	School	District	State	School	District	State
All Students	42.86%	39.70%	35.67%	46.31%	43.89%	45.50%	8.87%	11.60%	13.02%	1.97%	4.80%	5.80%	99.51%	98.15%	97.98%
AF AM	18.75%	20.73%	22.99%	62.50%	54.18%	53.49%	*	17.79%	16.46%	*	7.30%	7.06%	94.12%	98.04%	97.49%
AKNA/AI	*	20.23%	14.62%	*	51.11%	48.17%	*	18.54%	24.83%	*	10.11%	12.37%	100.00%	96.88%	97.59%
Asian	*	30.22%	28.26%	60.00%	48.71%	51.04%	*	15.32%	15.32%	*	5.75%	5.38%	100.00%	97.64%	97.67%
NH/OPI	*	14.67%	N/A	*	51.03%	N/A	*	24.59%	N/A	*	9.71%	N/A	100.00%	98.98%	N/A
White	45.71%	52.75%	47.28%	43.57%	38.06%	42.41%	*	6.69%	7.27%	*	2.50%	3.03%	100.00%	98.68%	98.28%
Hispanic	47.83%	32.35%	31.74%	43.48%	46.43%	48.60%	*	14.67%	13.66%	*	6.55%	6.00%	100.00%	97.14%	97.32%
ME	35.71%	33.26%	34.76%	57.14%	48.25%	47.75%	*	13.47%	12.80%	*	5.01%	4.70%	100.00%	98.15%	98.03%
EDS	30.36%	22.85%	21.47%	55.36%	49.71%	48.65%	8.93%	19.04%	20.31%	5.36%	8.40%	9.57%	100.00%	97.50%	96.44%
Not EDS	47.62%	51.44%	46.31%	42.86%	39.84%	43.15%	*	6.42%	7.56%	*	2.30%	2.98%	99.32%	98.61%	99.16%
SWD	*	10.08%	9.29%	59.09%	37.10%	37.96%	27.27%	32.15%	31.20%	*	20.67%	21.55%	95.65%	94.28%	93.60%
Non-SWD	47.51%	45.02%	40.09%	44.75%	45.12%	46.77%	*	7.91%	9.98%	*	1.95%	3.17%	100.00%	98.88%	98.75%
LEP	*	4.97%	3.12%	*	39.93%	38.06%	*	37.14%	38.40%	*	17.96%	20.42%	100.00%	94.25%	96.11%
Not LEP	43.22%	42.78%	39.95%	46.23%	44.25%	46.48%	9.05%	9.33%	9.68%	1.51%	3.64%	3.88%	99.50%	98.51%	98.23%
Migrant	*	27.01%	17.29%	*	50.34%	48.58%	*	16.44%	23.78%	*	6.21%	10.35%	N/A	98.35%	98.50%
Not Migrant	42.86%	40.26%	36.97%	46.31%	43.61%	45.29%	8.87%	11.38%	12.26%	1.97%	4.74%	5.48%	99.51%	98.14%	97.94%
Female	43.62%	44.40%	39.45%	50.00%	43.41%	45.33%	*	8.75%	10.85%	*	3.44%	4.37%	98.95%	98.39%	98.31%
Male	42.20%	35.15%	32.09%	43.12%	44.37%	45.67%	*	14.36%	15.08%	*	6.13%	7.16%	100.00%	97.92%	97.66%

\* Results cannot be published without releasing personally identifiable information based upon the EED reporting protocol

Writing: SBA Results Compared for Orion Elementary School, District and State Grades 3 Through 6															
	% Advanced Proficient			% Proficient			% Below Proficient			% Far Below Proficient			% Tested		
	School	District	State	School	District	State	School	District	State	School	District	State	School	District	State
All Students	38.92%	34.87%	30.49%	48.28%	44.25%	44.50%	*	18.78%	22.32%	*	2.10%	2.69%	99.51%	98.11%	97.96%
AF AM	37.50%	20.71%	20.51%	37.50%	46.71%	48.68%	*	28.71%	27.18%	*	3.88%	3.63%	94.12%	98.15%	97.71%
AKNA/AI	*	17.15%	12.11%	*	45.31%	41.05%	*	33.38%	40.69%	*	4.15%	6.15%	100.00%	96.51%	97.64%
Asian	*	30.17%	28.49%	60.00%	45.92%	45.93%	*	21.33%	23.31%	*	2.58%	2.27%	100.00%	97.56%	97.67%
NH/OPI	*	14.02%	N/A	*	42.89%	N/A	*	39.38%	N/A	*	3.71%	N/A	100.00%	99.18%	N/A
White	37.86%	45.85%	40.04%	50.00%	41.91%	44.71%	*	11.26%	13.97%	*	0.99%	1.28%	100.00%	98.66%	98.22%
Hispanic	60.87%	27.33%	27.00%	30.43%	47.25%	48.36%	*	22.54%	22.23%	*	2.88%	2.41%	100.00%	97.07%	97.36%
ME	21.43%	28.51%	29.14%	64.29%	47.68%	47.29%	*	21.31%	21.37%	*	2.51%	2.20%	100.00%	98.15%	97.96%
EDS	39.29%	18.92%	17.53%	42.86%	47.34%	45.15%	*	29.95%	32.95%	*	3.79%	4.37%	100.00%	97.50%	96.53%
Not EDS	38.78%	45.99%	40.21%	50.34%	42.10%	44.01%	*	10.99%	14.35%	*	0.92%	1.44%	99.32%	98.54%	99.06%
SWD	*	7.09%	6.94%	54.55%	38.82%	37.02%	40.91%	45.96%	47.34%	*	8.12%	8.69%	95.65%	94.28%	93.97%
Non-SWD	43.65%	39.86%	34.45%	47.51%	45.23%	45.76%	*	13.89%	18.11%	*	1.02%	1.69%	100.00%	98.83%	98.66%
LEP	*	4.71%	3.14%	*	37.05%	30.66%	*	50.57%	56.76%	*	7.67%	9.44%	100.00%	94.25%	96.18%
Not LEP	38.19%	37.55%	34.08%	49.25%	44.89%	46.32%	*	15.96%	17.79%	*	1.60%	1.81%	99.50%	98.47%	98.20%
Migrant	*	21.44%	14.20%	*	48.58%	42.55%	*	26.63%	38.57%	*	3.35%	4.68%	N/A	98.51%	98.58%
Not Migrant	38.92%	35.46%	31.63%	48.28%	44.06%	44.64%	*	18.43%	21.18%	*	2.04%	2.55%	99.51%	98.09%	97.92%
Female	48.94%	42.63%	37.48%	42.55%	42.50%	43.42%	*	13.62%	17.40%	*	1.26%	1.70%	98.95%	98.32%	98.22%
Male	30.28%	27.36%	23.87%	53.21%	45.96%	45.52%	*	23.78%	26.98%	*	2.91%	3.63%	100.00%	97.90%	97.72%

\* Results cannot be published without releasing personally identifiable information based upon the EED reporting protocol

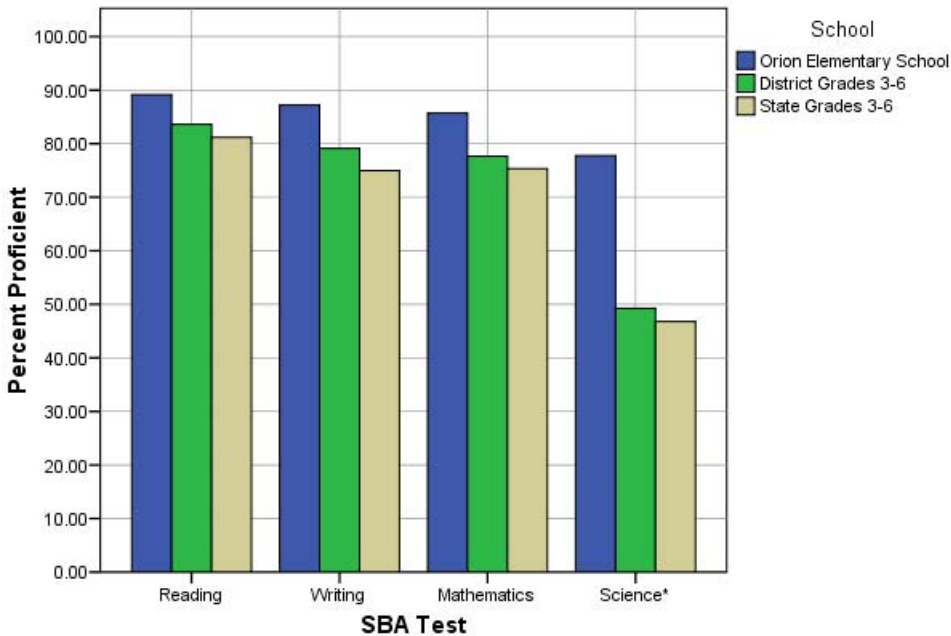
Mathematics: SBA Results Compared for Orion Elementary School, District and State Grades 3 Through 6															
	% Advanced Proficient			% Proficient			% Below Proficient			% Far Below Proficient			% Tested		
	School	District	State	School	District	State	School	District	State	School	District	State	School	District	State
All Students	46.80%	39.81%	36.08%	38.92%	37.84%	39.26%	9.85%	12.46%	13.78%	4.43%	9.88%	10.88%	99.51%	98.52%	98.12%
AF AM	25.00%	19.48%	22.09%	37.50%	40.14%	41.60%	18.75%	20.19%	18.61%	18.75%	20.19%	17.70%	94.12%	98.38%	97.78%
AKNA/AI	*	23.20%	18.26%	*	39.51%	39.14%	*	19.22%	21.79%	*	18.07%	20.81%	100.00%	96.96%	97.72%
Asian	*	37.02%	34.29%	80.00%	41.20%	41.23%	*	13.76%	14.10%	*	8.03%	10.38%	100.00%	99.27%	98.99%
NH/OPI	*	18.52%	N/A	*	38.07%	N/A	*	20.16%	N/A	*	23.25%	N/A	100.00%	99.39%	N/A
White	50.00%	51.12%	45.75%	39.29%	35.15%	38.35%	7.14%	8.41%	9.81%	3.57%	5.32%	6.09%	100.00%	98.69%	98.17%
Hispanic	56.52%	31.85%	31.11%	34.78%	40.04%	42.19%	*	15.02%	15.10%	*	13.09%	11.60%	100.00%	98.66%	98.47%
ME	35.71%	33.75%	35.45%	35.71%	41.21%	40.61%	*	13.93%	13.30%	*	11.11%	10.64%	100.00%	98.26%	98.00%
EDS	35.71%	24.26%	23.31%	48.21%	41.50%	40.98%	7.14%	17.54%	18.60%	8.93%	16.70%	17.11%	100.00%	98.14%	96.77%
Not EDS	51.02%	50.70%	45.67%	35.37%	35.28%	37.96%	10.88%	8.91%	10.16%	2.72%	5.12%	6.21%	99.32%	98.79%	99.16%
SWD	13.64%	12.52%	12.06%	50.00%	31.53%	32.14%	*	23.68%	23.60%	*	32.27%	32.20%	95.65%	94.19%	93.99%
Non-SWD	50.83%	44.69%	40.12%	37.57%	38.97%	40.45%	7.73%	10.46%	12.13%	3.87%	5.88%	7.30%	100.00%	99.34%	98.85%
LEP	*	8.22%	6.05%	*	36.74%	34.10%	*	24.50%	27.43%	*	30.54%	32.42%	100.00%	97.95%	97.56%
Not LEP	46.73%	42.73%	40.09%	39.20%	37.94%	39.95%	10.05%	11.35%	11.96%	4.02%	7.98%	8.01%	99.50%	98.57%	98.19%
Migrant	*	30.94%	22.37%	*	43.65%	40.27%	*	14.21%	20.36%	*	11.20%	17.00%	N/A	98.68%	98.54%
Not Migrant	46.80%	40.21%	37.05%	38.92%	37.58%	39.19%	9.85%	12.38%	13.31%	4.43%	9.83%	10.45%	99.51%	98.51%	98.09%
Female	45.74%	41.01%	36.83%	43.62%	38.32%	39.88%	6.38%	11.59%	13.34%	4.26%	9.09%	9.96%	98.95%	98.71%	98.31%
Male	47.71%	38.66%	35.38%	34.86%	37.38%	38.67%	12.84%	13.30%	14.20%	4.59%	10.66%	11.75%	100.00%	98.34%	97.94%

\* Results cannot be published without releasing personally identifiable information based upon the EED reporting protocol

Science: SBA Results Compared for Orion Elementary School, District and State Grade 4															
	% Advanced Proficient			% Proficient			% Below Proficient			% Far Below Proficient			% Tested		
	School	District	State	School	District	State	School	District	State	School	District	State	School	District	State
All Students	35.56%	23.68%	22.1%	42.22%	25.57%	24.7%	*	31.70%	31.3%	*	19.06%	21.9%	100.00%	97.81%	95.35%
AF AM	*	9.18%	8.9%	*	18.84%	23.3%	*	39.13%	38.0%	*	32.85%	29.8%	100.00%	98.57%	94.49%
AKNA/AI	*	6.54%	6.8%	*	21.50%	14.2%	*	42.99%	35.2%	*	28.97%	43.8%	N/A	96.40%	94.98%
Asian	*	10.18%	13.4%	*	21.40%	19.4%	*	39.30%	37.5%	*	29.12%	29.7%	N/A	98.28%	97.39%
NH/OPI	*	6.57%	N/A	*	8.03%	N/A	*	34.31%	N/A	*	51.09%	N/A	100.00%	98.56%	N/A
White	40.00%	36.40%	32.3%	45.71%	29.08%	29.9%	*	25.33%	27.3%	*	9.19%	10.5%	100.00%	97.87%	94.97%
Hispanic	*	16.17%	18.2%	*	26.15%	26.0%	*	32.08%	33.9%	*	25.61%	21.9%	100.00%	97.12%	96.39%
ME	*	16.06%	18.5%	*	26.12%	26.8%	*	37.47%	35.9%	*	20.34%	18.7%	100.00%	98.32%	96.90%
EDS	*	8.34%	11.0%	50.00%	22.44%	20.1%	28.57%	38.10%	34.7%	*	31.12%	34.2%	100.00%	97.73%	94.99%
Not EDS	45.16%	35.00%	31.2%	38.71%	27.88%	28.5%	*	26.97%	28.5%	*	10.15%	11.9%	100.00%	97.87%	95.64%
SWD	*	8.38%	7.7%	*	16.38%	15.2%	*	36.57%	36.6%	*	38.67%	40.5%	100.00%	93.25%	91.70%
Non-SWD	36.36%	26.43%	24.7%	40.91%	27.22%	26.4%	*	30.82%	30.4%	*	15.53%	18.5%	100.00%	98.68%	96.04%
LEP	*	2.00%	1.5%	*	5.14%	3.8%	*	34.00%	28.3%	*	58.86%	66.5%	100.00%	96.15%	95.67%
Not LEP	37.21%	26.13%	25.2%	44.19%	27.88%	27.9%	*	31.44%	31.8%	*	14.55%	15.1%	100.00%	98.00%	95.30%
Migrant	*	9.70%	9.0%	*	26.87%	15.3%	*	39.55%	34.3%	*	23.88%	41.4%	N/A	97.10%	97.32%
Not Migrant	35.56%	24.24%	23.0%	42.22%	25.51%	25.3%	*	31.38%	31.1%	*	18.86%	20.5%	100.00%	97.84%	95.21%
Female	23.81%	22.73%	20.8%	47.62%	25.78%	25.2%	*	33.63%	32.6%	*	17.87%	21.4%	100.00%	98.05%	95.43%
Male	45.83%	24.61%	23.4%	37.50%	25.36%	24.2%	*	29.80%	30.1%	*	20.23%	22.3%	100.00%	97.58%	95.27%

\* Results cannot be published without releasing personally identifiable information based upon the EED reporting protocol

2007-08 SBA Results Compared for Orion Elementary School, District and State

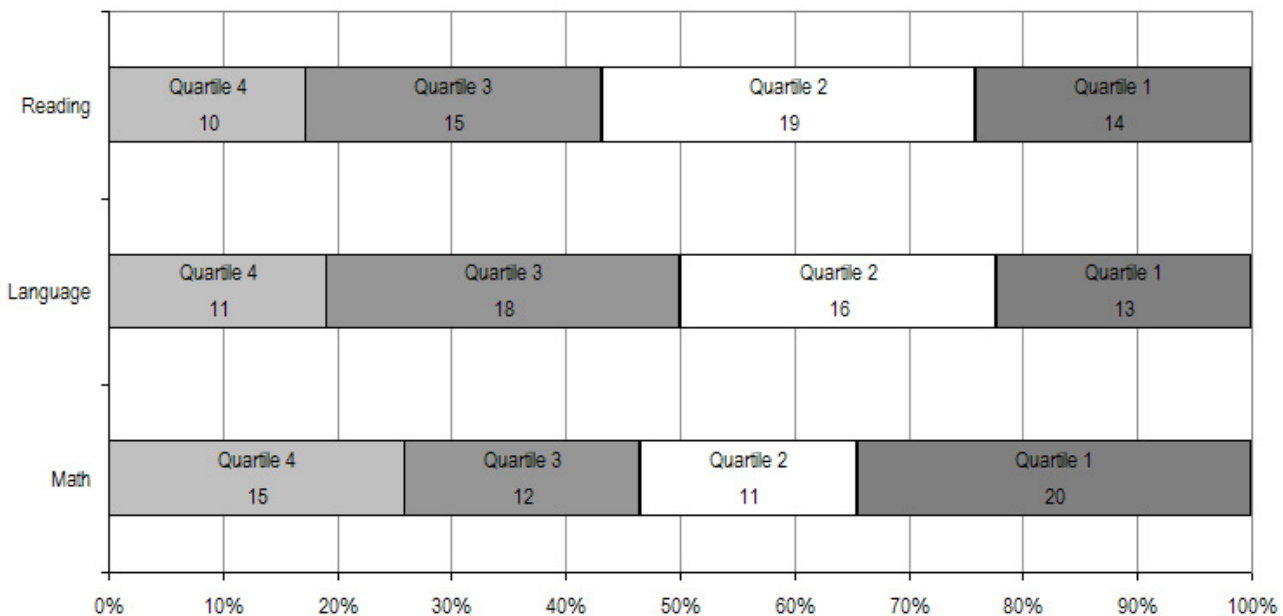


\* 2007-08 was the first year Science was administered for grades 4, 8 and 10 on the SBA.

Orion Elementary School TerraNova Grade 5 Percent in Each Quartile								
Reading	Above Average		Average				Below Average	
	4th Quartile (76-99 percentile)		3rd Quartile (51-75 percentile)		2nd Quartile (26-50 percentile)		1st Quartile (1-25 percentile)	
	School	District	School	District	School	District	School	District
07-08	17.24%	25.65%	25.86%	24.08%	32.76%	23.73%	24.14%	26.55%
06-07	40.9%	33.1%	27.3%	26.1%	15.9%	23.6%	15.9%	17.2%
05-06	31.8%	30.4%	20.5%	26.8%	31.8%	24.5%	15.9%	18.3%
04-05	36.6%	29.2%	31.7%	27.6%	19.5%	24.5%	12.2%	18.7%
03-04	33.3%	30.6%	23.1%	26.9%	23.1%	24.2%	20.5%	18.3%
<b>Language</b>								
07-08	18.97%	26.79%	31.03%	27.20%	27.59%	24.12%	22.41%	21.89%
06-07	43.2%	34.7%	25.0%	26.9%	20.5%	21.4%	11.4%	17.0%
05-06	31.8%	34.0%	29.5%	26.5%	22.7%	22.0%	15.9%	17.5%
04-05	36.6%	32.1%	43.9%	28.3%	4.9%	21.2%	14.6%	18.4%
03-04	28.2%	34.1%	43.6%	26.5%	15.4%	21.7%	12.8%	17.7%
<b>Mathematics</b>								
07-08	25.86%	25.45%	20.69%	26.40%	18.97%	24.47%	34.48%	23.68%
06-07	31.8%	29.7%	38.6%	31.6%	15.9%	21.2%	13.6%	17.4%
05-06	25.0%	28.4%	40.9%	31.9%	20.5%	22.3%	13.6%	17.5%
04-05	43.9%	26.9%	26.8%	31.1%	14.6%	22.9%	14.6%	19.1%
03-04	38.5%	28.3%	30.8%	29.3%	20.5%	22.6%	10.3%	19.8%

The double bold line indicates a change from the TerraNova 2<sup>nd</sup> edition to the TerraNova 3<sup>rd</sup> edition.

2007-08 TerraNova 3rd Edition Grade 5 Percent and Count of Students in Each Quartile For Orion Elementary School



**Climate Survey Results for Orion Elementary School**

The Anchorage School District administered the School Climate and Connectedness Surveys in spring 2008 to students in grades 5-12, all school staff and parents/guardians of students in grades K-12. The surveys were done to provide schools with information about perceptions and experiences related to school climate for use in setting school goals and redirecting resources. In the spring of 2008 grades 3 and 4 students were involved in a pilot survey for measuring school climate and connectedness. The results are currently under review by the American Institutes for Research.

Respondents were asked to answer a series of questions that were related to a certain concept. For each item, there were five options from which to choose a response. The answer options ranged from strongly disagree (1) to strongly agree (5).

Student Survey Response Rate Grades 5-12			
	Orion Elementary School	Overall Elementary Schools	District**
# Surveys Completed	86	5,579	21,629
# Reportable Surveys	77	4,969	18,654
# Students Enrolled*	93	6,331	28,945
Reportable Response Rate	82.80%	78.49%	64.45%

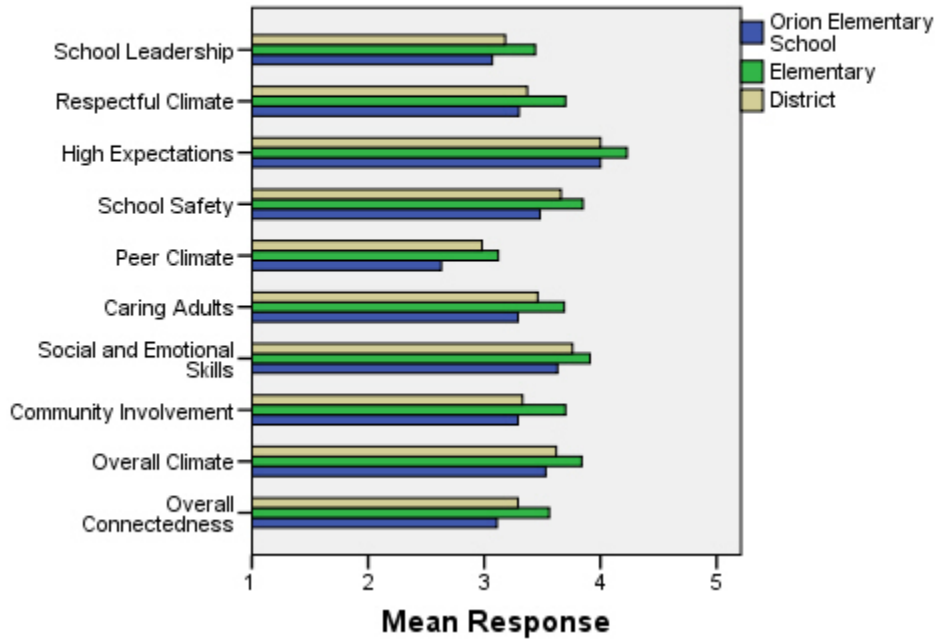
\*Number enrolled as of April 1, 2008

\*\*District data does not include KCC responses

Each question in the survey related to a factor or concept, and a score was calculated based on the mean response for the questions related to each factor. The factors measured in the survey were:

- **School Leadership and Student Involvement:** This factor reflects students' feelings about the decision making of school leaders as well as student participation in the school governance. Students selected responses between 1 and 5 where 1 indicates a low level of school leadership and student involvement and 5 indicates a high level of school leadership and student involvement.
- **Respectful Climate:** This factor reflects students' feelings about fairness of rules and respect for students' contributions. Students selected responses between 1 and 5 where 1 indicates a lack of a respectful climate and 5 indicates a highly respectful climate for students.
- **High Expectations:** This factor reflects students' feelings about their own expectations as well as those of adults in their school and community. Students selected responses between 1 and 5 where 1 indicates a lack of high expectations and 5 indicates a high level of high expectations.
- **School Safety:** This factor reflects students' feelings about bullies and gangs at school as well as general crime and violence in the community. Students selected responses between 1 and 5 where 1 indicates a low level of school safety and 5 indicates a high level of school safety.
- **Peer Climate:** This factor reflects students' feelings about how respectful students are to one another and how helpful students are to other students. Students selected responses between 1 and 5 where 1 indicates a more negative peer climate and 5 indicates a very positive peer climate at the school.
- **Caring Adults:** This factor reflects students' feelings about how close they feel to adults in the school. Students selected responses between 1 and 5 where 1 indicates a lack of caring adult relationships and 5 indicates strong caring adult relationships at the school.
- **Social and Emotional Learning:** This factor reflects students' ability to think about the consequences of their actions and to empathize with others. Students selected responses between 1 and 5 where 1 indicates that students at the school perceive themselves as having poorer social and emotional learning, and 5 indicates higher levels of social and emotional learning.
- **Community Involvement:** This factor reflects students' feelings about how supportive and welcoming the school is with parents and the community. Students selected responses between 1 and 5 where 1 indicates a less supportive and welcoming environment and 5 indicates a more supportive and welcoming environment.
- **Overall Climate:** The overall climate score was computed as the mean of three scales: school leadership, high expectations and school safety.
- **Overall Connectedness:** Overall connectedness score was computed as a mean of four scales: respectful climate, peer climate, caring adults and community involvement.

### Climate and Connectedness Student Survey - Orion



Student Survey Mean Response by Factors Related to School Climate - Overall District			
	Orion Elementary School	Overall Elementary Schools	District
School Leadership	3.07	3.44	3.18
Respectful Climate	3.30	3.70	3.37
High Expectations	4.00	4.23	4.00
School Safety	3.48	3.85	3.66
Peer Climate	2.63	3.12	2.98
Caring Adults	3.29	3.69	3.46
Social and Emotional Skills	3.63	3.91	3.76
Community Involvement	3.29	3.70	3.33
Overall Climate	3.53	3.84	3.62
Overall Connectedness	3.11	3.56	3.29

Range is from a low of 1 to a high of 5

Students were also asked to answer questions related to school danger. The following table provides the responses for those questions:

Student Survey Results of the School Danger Questions - Percent of Students Responding in Each Category					
	0 Times	1-2 Times	3-6 Times	7-12 Times	> 12 Times
<b>Orion Elementary School</b>					
Under the influence of drugs?	93.42%	5.26%	1.32%	0.00%	0.00%
Under the influence of alcohol?	89.33%	8.00%	1.33%	1.33%	0.00%
Destroy things (vandalism)?	37.84%	32.43%	14.86%	6.76%	8.11%
Get into fights?	9.21%	34.21%	31.58%	11.84%	13.16%
Steal things?	36.00%	22.67%	21.33%	10.67%	9.33%
Threaten or bully?	22.37%	19.74%	19.74%	6.58%	31.58%
Under the influence of inhalants?	56.58%	25.00%	10.53%	3.95%	3.95%
Carry weapons?	60.53%	22.37%	9.21%	1.32%	6.58%
<b>Overall Elementary Schools</b>					
Under the influence of drugs?	91.87%	5.65%	1.22%	0.31%	0.96%
Under the influence of alcohol?	91.42%	6.01%	1.16%	0.51%	0.90%
Destroy things (vandalism)?	46.82%	32.08%	12.45%	3.30%	5.36%
Get into fights?	22.32%	35.75%	22.56%	7.96%	11.41%
Steal things?	49.79%	27.92%	12.01%	4.33%	5.95%
Threaten or bully?	32.34%	28.83%	17.08%	7.78%	13.97%
Under the influence of inhalants?	71.03%	17.07%	6.14%	2.63%	3.12%
Carry weapons?	79.22%	15.35%	3.17%	0.59%	1.68%
<b>District</b>					
Under the influence of drugs?	60.45%	15.05%	9.54%	3.92%	11.04%
Under the influence of alcohol?	63.11%	16.37%	8.90%	4.43%	7.19%
Destroy things (vandalism)?	41.26%	29.47%	15.45%	5.88%	7.94%
Get into fights?	26.40%	35.20%	21.96%	7.11%	9.33%
Steal things?	44.80%	25.68%	13.81%	6.98%	8.74%
Threaten or bully?	32.21%	26.21%	16.68%	9.27%	15.63%
Under the influence of inhalants?	72.79%	14.21%	5.66%	2.48%	4.87%
Carry weapons?	69.45%	19.15%	5.34%	2.01%	4.06%

Student Survey Results of the Mean Factor Score by Ethnicity (Self-Reported)							
	AKNA/AI	AF AM	Hispanic	Asian/NH	White	Other	Multi-Ethnic
<b>Orion Elementary School</b>							
School Leadership	***	3.32	3.05	3.08	3.03	3.40	2.96
Respectful Climate	***	3.40	2.42	3.38	3.38	3.50	3.17
High Expectations	***	4.11	3.39	3.97	4.10	4.25	3.86
School Safety	***	2.88	3.30	3.28	3.58	3.52	3.47
Peer Climate	***	2.50	2.40	2.67	2.67	2.64	2.56
Caring Adults	***	3.15	3.15	3.65	3.37	3.16	3.00
Social and Emotional Skills	***	3.67	3.30	3.25	3.75	3.79	3.57
Community Involvement	***	3.24	3.11	2.61	3.35	3.25	3.52
Overall Climate	***	3.39	3.25	3.44	3.57	3.88	3.52
Overall Connectedness	***	3.73	2.77	2.79	3.16	3.01	3.11
<b>Overall Elementary Schools</b>							
School Leadership	3.56	3.50	3.52	3.55	3.37	3.44	3.42
Respectful Climate	3.75	3.60	3.66	3.72	3.71	3.69	3.63
High Expectations	4.12	4.23	4.23	4.22	4.26	4.19	4.25
School Safety	3.75	3.63	3.73	3.68	4.03	3.66	3.79
Peer Climate	3.12	2.94	3.12	3.18	3.16	3.05	3.05
Caring Adults	3.64	3.73	3.64	3.59	3.74	3.60	3.76
Social and Emotional Skills	3.86	3.84	3.91	3.95	3.93	3.90	3.89
Community Involvement	3.66	3.60	3.67	3.66	3.75	3.66	3.70
Overall Climate	3.81	3.79	3.84	3.81	3.89	3.76	3.82
Overall Connectedness	3.56	3.49	3.51	3.53	3.60	3.49	3.56
<b>District</b>							
School Leadership	3.33	3.14	3.19	3.28	3.14	3.17	3.15
Respectful Climate	3.48	3.18	3.32	3.39	3.39	3.37	3.33
High Expectations	3.98	3.94	3.96	4.02	4.02	4.00	4.01
School Safety	3.60	3.48	3.55	3.47	3.78	3.51	3.62
Peer Climate	3.01	2.85	2.94	3.05	3.00	2.92	2.93
Caring Adults	3.49	3.43	3.37	3.33	3.51	3.42	3.46
Social and Emotional Skills	3.73	3.66	3.73	3.81	3.78	3.75	3.74
Community Involvement	3.37	3.22	3.31	3.29	3.34	3.34	3.31
Overall Climate	3.64	3.52	3.57	3.59	3.65	3.56	3.60
Overall Connectedness	3.33	3.17	3.24	3.26	3.31	3.26	3.27

\*\*\*Results can not be calculated because of missing responses

Staff Survey Response Rate			
	Orion Elementary School	Overall Elementary Schools	District**
# Surveys Completed	32	1,634	2,980
# Reportable Surveys	31	1,628	2,968
# Staff Members*	39	2,967	5,549
Reportable Response Rate	79.49%	54.87%	53.49%

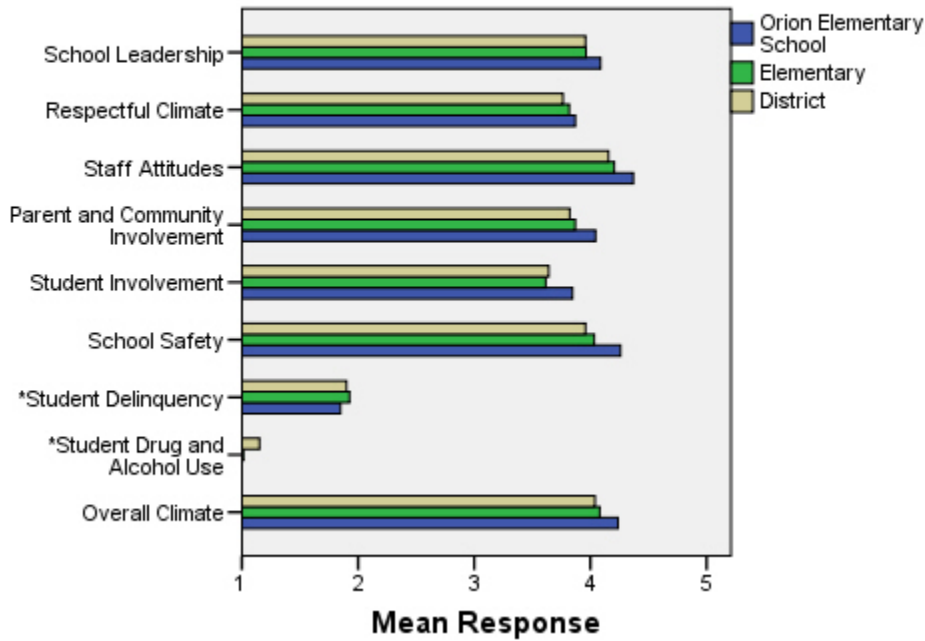
\*Number staff as of April 1, 2008

\*\*Includes KCC responses

Each question in the survey related to a factor or concept, and a score was calculated based on the mean response for the questions related to each factor. The factors were:

- **School Leadership:** This factor reflects staff members' feelings about the decision making of school leaders as well as the fairness of school rules. Staff members selected responses between 1 and 5 where 1 indicates a low level of school leadership and 5 indicates a high level of school leadership.
- **Respectful Climate:** This factor reflects staff members' feelings about how students treat each other and how well students and staff members treat one another. Staff members selected responses between 1 and 5 where 1 indicates a low level of respect and 5 indicates a high level.
- **Staff Attitudes:** This scale reflects staff members' feelings about the competence of teachers as well as how positive their attitudes are towards their jobs. Staff members selected responses between 1 and 5 where 1 indicates more negative staff attitudes and 5 indicates highly positive staff attitudes.
- **Parent and Community Involvement:** This factor reflects staff members' feelings about how accessible the school is for parents as well as how connected adults in the community are to the school. Staff members selected responses between 1 and 5 where 1 indicates a low level of parent and community involvement and 5 indicates a high level of parent and community involvement.
- **Student Involvement:** This factor reflects staff members' feeling about how involved students are in the decision making process. Staff members selected responses between 1 and 5 where 1 indicates a low level of student involvement and 5 indicates a high level of student involvement.
- **School Safety:** This factor reflects staff members' feelings about the impact of gangs and bullies as well as general crime and violence in the community. Staff members selected responses between 1 and 5 where 1 indicates a low level school safety and 5 indicates a high level of school safety.
- **Student Delinquency:** This factor uses staff members' reports of observing students getting into fights, stealing and bullying. The student delinquency and student drug and alcohol use scales differ from the other factors since the higher the score is the more negative the response. Staff members selected responses between 1 and 5 where 1 indicates a low level of student delinquency and 5 indicates a high level of student delinquency.
- **Student Drug and Alcohol Use:** This factor uses staff members' reports of observing students under the influence of drugs or alcohol. The student delinquency and student drug and alcohol use scales differ from the other factors since the higher the score is the more negative the response. Staff members selected responses between 1 and 5 where 1 indicates a low level of student drug and alcohol use and 5 indicates a high level of student drug and alcohol use.
- **Overall Climate:** Computed as the mean of 8 scales: school leadership, respectful climate, staff attitudes, parent and community involvement, student involvement, school safety, student delinquency, and drug and alcohol use scores.

### Climate and Connectedness Staff Survey - Orion



Staff Survey Mean Response by Factors Related to School Climate - Overall District			
	Orion Elementary School	Overall Elementary Schools	District
School Leadership	4.09	3.96	3.96
Respectful Climate	3.87	3.82	3.76
Staff Attitudes	4.37	4.21	4.16
Parent & Community Involvement	4.04	3.87	3.82
Student Involvement	3.85	3.61	3.64
School Safety	4.26	4.03	3.96
Student Delinquency*	1.85	1.93	1.90
Student Drug & Alcohol Use*	1.00	1.01	1.15
Overall Climate	4.24	4.08	4.04

Range is from a low of 1 to a high of 5

\*Student Drug and Alcohol Use and Student Delinquency factor scale scores differ from other factors since the higher the score is the more negative the response.

Staff members were also asked to answer questions related to school danger. The following table provides the responses for those questions:

Staff Survey Results of the School Danger Questions - Percent of Staff Responding in Each Category					
	0 Times	1-2 Times	3-6 Times	7-12 Times	> 12 Times
<b>Orion Elementary School</b>					
Under the influence of drugs?	100.00%	0.00%	0.00%	0.00%	0.00%
Under the influence of alcohol?	100.00%	0.00%	0.00%	0.00%	0.00%
Destroy things (vandalism)?	50.00%	38.46%	7.69%	3.85%	0.00%
Get into fights?	30.77%	42.31%	7.69%	11.54%	7.69%
Steal things?	38.46%	30.77%	30.77%	0.00%	0.00%
Threaten or bully?	19.23%	42.31%	19.23%	11.54%	7.69%
Under the influence of inhalants?	100.00%	0.00%	0.00%	0.00%	0.00%
Carry weapons?	100.00%	0.00%	0.00%	0.00%	0.00%
<b>Overall Elementary Schools</b>					
Under the influence of drugs?	98.39%	1.47%	0.15%	0.00%	0.00%
Under the influence of alcohol?	98.97%	0.96%	0.07%	0.00%	0.00%
Destroy things (vandalism)?	40.04%	37.02%	16.00%	4.13%	2.80%
Get into fights?	32.16%	38.18%	19.24%	5.58%	4.85%
Steal things?	38.65%	40.63%	13.96%	4.56%	2.20%
Threaten or bully?	20.00%	36.03%	23.38%	10.59%	10.00%
Under the influence of inhalants?	98.90%	0.95%	0.15%	0.00%	0.00%
Carry weapons?	89.94%	8.96%	1.03%	0.07%	0.00%
<b>District</b>					
Under the influence of drugs?	82.61%	11.54%	4.11%	1.19%	0.55%
Under the influence of alcohol?	86.69%	10.21%	2.34%	0.60%	0.16%
Destroy things (vandalism)?	38.03%	36.81%	16.05%	5.07%	4.04%
Get into fights?	35.38%	38.78%	16.46%	4.83%	4.55%
Steal things?	41.82%	37.07%	14.02%	4.28%	2.81%
Threaten or bully?	22.88%	37.15%	21.97%	8.96%	9.04%
Under the influence of inhalants?	97.27%	2.42%	0.24%	0.04%	0.04%
Carry weapons?	88.47%	10.26%	1.11%	0.08%	0.08%

Staff Survey Results of the Mean Factor Score by Ethnicity (Self-Reported)						
	AKNA/AI	AF AM/Black	Hispanic	Asian/NH	White	Multi-Ethnic
<b>Orion Elementary School</b>						
School Leadership	***	4.88	3.63	***	4.05	***
Respectful Climate	***	4.60	3.80	***	3.84	***
Staff Attitudes	***	5.00	5.00	***	4.30	***
Parent and Community Involvement	***	4.43	3.86	***	4.01	***
Student Involvement	***	5.00	***	***	3.78	***
School Safety	***	4.60	3.80	***	4.23	***
* Student Delinquency	***	1.60	1.00	***	1.91	***
* Student Drug and Alcohol Use	***	1.00	1.00	***	1.00	***
Overall Climate	***	4.74	***	***	4.19	***
<b>Overall Elementary Schools</b>						
School Leadership	4.10	4.13	4.11	4.17	3.96	4.06
Respectful Climate	3.74	3.99	3.87	4.06	3.81	3.88
Staff Attitudes	4.15	4.23	4.30	4.24	4.21	4.31
Parent and Community Involvement	3.86	4.06	3.97	3.99	3.87	3.91
Student Involvement	3.78	3.66	3.73	3.81	3.61	3.71
School Safety	3.92	4.10	4.16	3.93	4.04	4.05
* Student Delinquency	1.79	1.61	1.65	1.54	1.97	2.13
* Student Drug and Alcohol Use	1.00	1.00	1.01	1.03	1.01	1.01
Overall Climate	4.08	4.18	4.23	4.24	4.07	4.13
<b>District</b>						
School Leadership	3.99	3.99	4.13	4.15	3.96	4.06
Respectful Climate	3.66	3.83	3.84	3.96	3.76	3.84
Staff Attitudes	4.06	4.11	4.27	4.22	4.16	4.29
Parent and Community Involvement	3.75	3.91	3.94	3.93	3.82	3.85
Student Involvement	3.62	3.67	3.85	3.88	3.64	3.72
School Safety	3.82	3.94	4.06	3.94	3.97	3.94
* Student Delinquency	1.88	1.90	1.67	1.61	1.91	2.05
* Student Drug and Alcohol Use	1.12	1.26	1.03	1.16	1.15	1.13
Overall Climate	3.96	4.04	4.20	4.18	4.04	4.09

\*Student Drug and Alcohol Use and Student Delinquency factor scale scores differ from other factors since the higher the score is the more negative the response.

\*\*Staff survey results do not include an 'Other' ethnicity category since staff in that category all chose at least one other ethnicity in addition to 'Other' and were included in the 'Multi-Ethnic' category as a result.

\*\*\*Results can not be calculated because of missing responses

The response rate is not high enough to provide statistically reliable results for Orion Elementary School's Parent/Guardian Survey Results.