

Ravenwood Elementary School Overview

Statement of Program

Ravenwood Elementary School sits in the beautiful Eagle River Valley, nestled in a forested area surrounded by magnificent mountain vistas. It's a wonderful place to live and work, and educate our students. Outdoor education is a priority of our school. It is incorporated into the standards and curriculum whenever possible.

The staff at Ravenwood shares a commitment to academic progress, providing a positive, safe, enriching environment, encouraging lifelong learning and fostering cooperation and respect. With the help of parents and the community, we expect that each of our students will become happy, contributing, successful members of our culturally diverse and technologically advanced society.

From the School Report Card

School Goals	
Goal	Level of Achievement
Twenty percent of students identified as struggling readers will be rated proficient on district reading assessments by spring.	Attained
The number of students in grades 3-6 rated proficient on the state math assessment will increase from 91.4 to 92.4 percent.	Attained

From the School Report Card

Budget*	
2006-07 Actual Expenditures	\$2,149,195
2007-08 Revised Budgeted Amount	\$2,791,859
2008-09 Proposed Budget	\$2,693,531

*Dollars budgeted or expended are general fund only
From IFAS

Ravenwood Elementary School Characteristics			
	School	District	Source of Information
Membership	427	48,858	Fall OASIS
Capacity	87.42%	N/A	2008-18 ASD Capital Improvement Plan
Attendance Rate	95.03%	92.83%	NCLB Summer Data Collection
Retention Rate K-8	1.01%	0.60%	SMS and NCLB Summer Data Collection
Transiency Rate	12.31%	26.07%	NCLB Summer Data Collection
Economically Disadvantaged	36	17,717	Fall OASIS
Average Weekly Volunteer Hours	100	4,660	Department of Education Report Card Report
Students Taking the Alternate Assessment	0	228	SMS
Change in Enrollment	-4.90%	-0.76%	Fall Oasis

Teacher Qualification				
Number of Teachers	Percent Fully Licensed	Percent With Advanced Degrees	Number Nationally Board Certified	Percent of Classes Taught by "Highly Qualified Teachers"
32	100.00%	37.50%	2	100.00%

Ravenwood Elementary School Business Partnerships
Eagle River Nature Center; Wal-Mart, Eagle River

From the School Report Card

Ethnicity Report							
African-American/Black	Alaska Native/American Indian	Asian	Native Hawaiian/Other Pacific Islander	White	Hispanic	Multi-Ethnic	Total
4	14	14	2	347	17	29	427

From Fall Oasis

Full Academic Year		
Students Enrolled	Students Enrolled for FAY	Percent FAY
430	408	94.88%

From participation file (Grades 3-10)

Ravenwood Elementary School
2007-08 Adequate Yearly Progress
Status Report

Meets AYP

AMO For Language Arts: 77.18%
AMO For Mathematics: 66.09%

Group	Participation Rate				"FAY" (D) Tested & Enrolled "FAY"	Language Arts Performance				Mathematics Performance			
	(A) Number Enrolled	(B) Number Tested	Participation Rate (%)	(C) Participation Rate Met		(E) Proficient on LA	(F) Percent Proficient on LA	(G) LA Target	(H) Met AMO for LA	(I) Proficient on Mathematics	(J) Percent Proficient in Mathematics	(K) Mathematics Target	(L) Met AMO for Mathematics
All Students	228	225	98.7%	Yes	218	209	95.9%	70.6%	Yes	199	91.3%	58.6%	Yes
AF AM	<5	<5	N/A	N/A	N/A	N/A	N/A	N/A	N/A	N/A	N/A	N/A	N/A
AKNA/AI	5	<5	N/A	N/A	N/A	N/A	N/A	N/A	N/A	N/A	N/A	N/A	N/A
Asian/NH/OPI	10	10	N/A	N/A	N/A	N/A	N/A	N/A	N/A	N/A	N/A	N/A	N/A
White	181	179	98.9%	Yes	178	169	94.9%	69.9%	Yes	162	91%	57.8%	Yes
Hispanic	11	11	N/A	N/A	N/A	N/A	N/A	N/A	N/A	N/A	N/A	N/A	N/A
ME	19	19	N/A	N/A	N/A	N/A	N/A	N/A	N/A	N/A	N/A	N/A	N/A
EDS	20	19	N/A	N/A	N/A	N/A	N/A	N/A	N/A	N/A	N/A	N/A	N/A
SWD	33	33	100%	Yes	32	23	71.9%	59.9%	Yes	17	53.1%	46.6%	Yes
LEP	6	6	N/A	N/A	N/A	N/A	N/A	N/A	N/A	N/A	N/A	N/A	N/A

Attendance Rate: Met

95.0% (Threshold is 85%)

N/A is used to indicate:

(1) Subgroups with 20 or fewer students enrolled on the first day of testing shall not be included in participation rate calculation.

(2) Subgroups with 25 or fewer students enrolled for the "full academic year" shall not have the performance score computed.

* For the groups where the number enrolled is less than or equal to 40, participation is met when no more than two miss the test. Groups can also meet this target using the average of the past two or three years.

** When a group achieves a "Yes" without meeting the listed target, it has done so using either the 99% confidence interval or Safe Harbor.

*** The results cannot be published without releasing personally identifiable information based upon the EED reporting protocol.

This document was prepared by the ASD Assessment and Evaluation Department.

7/10/2008

Ravenwood Elementary School
2007-08 Adequate Yearly Progress
Growth Report

The AYP growth reports are generated by the Alaska State Department of Education and Early Development. The reports can be found online at: http://www.asdk12.org/depts/assess_eval/AYP/State_AS_D_AYG_0708.pdf

SBA Proficiency Comparison by Grade for Ravenwood Elementary School																
	Reading Percent Proficient				Writing Percent Proficient				Mathematics Percent Proficient				Science* Percent Proficient			
	04-05	05-06	06-07	07-08	04-05	05-06	06-07	07-08	04-05	05-06	06-07	07-08	04-05	05-06	06-07	07-08
All Students	94.85%	94.19%	95.53%	93.78%	91.85%	93.80%	93.90%	93.78%	91.45%	90.73%	91.46%	90.67%	N/A	N/A	N/A	72.34%
Grade 3	94.74%	92.86%	91.67%	88.71%	89.47%	91.43%	95% or more	95.16%	94.74%	90.14%	93.75%	88.71%	N/A	N/A	N/A	N/A
Grade 4	95% or more	91.67%	92.42%	95% or more	95.24%	93.33%	90.91%	93.62%	95.24%	95.00%	89.39%	89.36%	N/A	N/A	N/A	72.34%
Grade 5	92.73%	95% or more	95% or more	95% or more	95% or more	94.37%	95.08%	89.47%	89.29%	88.73%	93.44%	91.23%	N/A	N/A	N/A	N/A
Grade 6	94.83%	94.74%	95% or more	93.22%	86.21%	95% or more	94.37%	95% or more	86.21%	89.47%	90.14%	93.22%	N/A	N/A	N/A	N/A

* 2007-08 was the first year Science was administered for grades 4, 8 and 10 on the SBA.

SBA Proficient & Not Proficient by NCLB Groups for Ravenwood Elementary School								
	Reading		Writing		Mathematics		Science**	
	Percent Proficient	Percent Not Proficient	Percent Proficient	Percent Not Proficient	Percent Proficient	Percent Not Proficient	Percent Proficient	Percent Not Proficient
All Students	93.78%	6.22%	93.78%	6.22%	90.67%	9.33%	72.34%	27.66%
AF AM	*	*	*	*	*	*	*	*
AKNA/AI	*	*	*	*	*	*	*	*
Asian	75% or more	25% or fewer	75% or more	25% or fewer	75% or more	25% or fewer	*	*
NH/OPI	*	*	*	*	*	*	*	*
White	93.30%	6.70%	93.85%	6.15%	91.06%	8.94%	76.92%	23.08%
Hispanic	80% or more	20% or fewer	80% or more	20% or fewer	80% or more	20% or fewer	*	*
ME	80% or more	20% or fewer	80% or more	20% or fewer	84.21%	15.79%	*	*
EDS	80% or more	20% or fewer	80% or more	20% or fewer	84.21%	15.79%	*	*
Non-EDS	93.69%	6.31%	94.17%	5.83%	91.26%	8.74%	72.73%	27.27%
SWD	57.69%	42.31%	69.23%	30.77%	46.15%	53.85%	60% or fewer	40% or more
Non-SWD	98.49%	1.51%	96.98%	3.02%	96.48%	3.52%	78.05%	21.95%
LEP	*	*	*	*	*	*	*	*
Not LEP	94.14%	5.86%	93.69%	6.31%	90.54%	9.46%	72.34%	27.66%
Migrant	60% or more	40% or fewer	60% or more	40% or fewer	60% or more	40% or fewer	*	*
Not Migrant	93.64%	6.36%	94.09%	5.91%	90.45%	9.55%	71.74%	28.26%
Female	93.69%	6.31%	95.50%	4.50%	91.89%	8.11%	68.00%	32.00%
Male	93.86%	6.14%	92.11%	7.89%	89.47%	10.53%	77.27%	22.73%

* Results cannot be published without releasing personally identifiable information based upon the EED reporting protocol

** 2007-08 was the first year Science was administered for grades 4, 8 and 10 on the SBA.

SBA Mean Scale Score Comparison by NCLB Groups for Ravenwood Elementary School								
	Reading		Writing		Mathematics		Science***	
	06-07	07-08	06-07	07-08	06-07	07-08	06-07	07-08
All Students	418.15	419.29	417.02	414.17	400.05	397.80	N/A	331.47
AF AM	339.00	*	374.00	*	330.00	*	N/A	*
AKNA/AI	404.00	*	394.00	*	382.92	*	N/A	*
Asian**	480.00*	441.22	501.33*	448.00	481.00*	443.78	N/A	*
NH/OPI**	N/A	*	N/A	*	N/A	*	N/A	*
White	416.90	421.61	416.01	417.91	399.44	398.82	N/A	340.33
Hispanic	409.60	422.64	396.80	405.09	360.80	403.91	N/A	*
ME	417.64	409.37	405.45	393.32	388.36	384.26	N/A	*
EDS	396.84	391.79	400.92	366.26	387.28	374.42	N/A	*
Non-EDS	420.56	421.83	418.85	418.59	401.50	399.95	N/A	336.73
SWD	336.06	333.62	335.65	337.38	317.47	311.08	N/A	298.67
Non-SWD	424.24	430.48	423.07	424.20	406.18	409.13	N/A	336.27
LEP	341.50	*	344.50	*	310.40	*	N/A	*
Not LEP	421.40	420.55	420.10	415.62	403.85	398.64	N/A	331.47
Migrant	422.67	394.00	417.33	343.00	413.67	364.20	N/A	*
Not Migrant	418.09	419.86	417.02	415.79	399.88	398.56	N/A	331.91
Female	420.09	433.72	426.07	438.91	396.17	403.93	N/A	332.00
Male	416.40	405.24	408.82	390.08	403.57	391.82	N/A	330.86

* Results cannot be published without releasing personally identifiable information based upon the EED reporting protocol

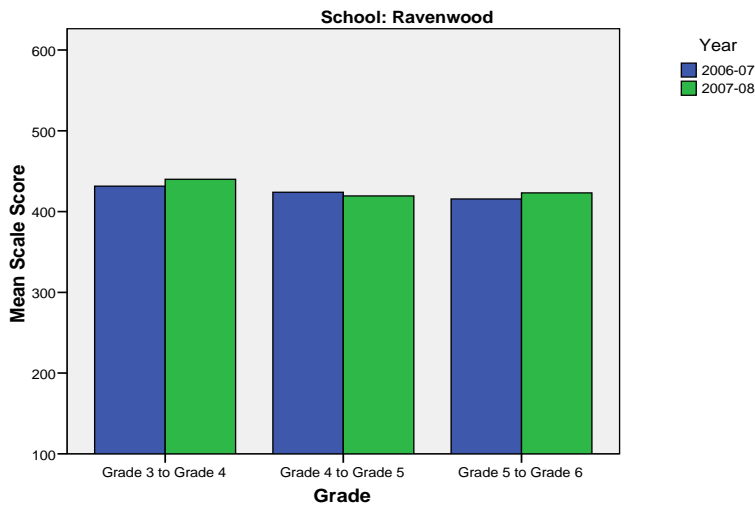
** Prior to 2007-08 the Asian category includes Native Hawaiian/Other Pacific Islander. In 2007-08 Native Hawaiian/Other Pacific Islander is a separate ethnic category.

*** 2007-08 was the first year Science was administered for grades 4, 8 and 10 on the SBA.

Ravenwood Elementary School SBA Change Average Scale Score by NCLB Groups: Reading									
	Average Scale Score of Students Tested in District Both Years			Average Scale Score of Students Tested in District Both Years			Average Scale Score of Students Tested in District Both Years		
	Grade 3 in 06-07	Grade 4 in 07-08	Difference	Grade 4-in 06-07	Grade 5 in 07-08	Difference	Grade 5-in 06-07	Grade 6 in 07-08	Difference
All Students	431.37	439.93	8.56	423.79	419.25	-4.54	415.57	423.09	7.52
AF AM	*	*	*	*	*	*	*	*	*
AKNA/AI	*	*	*	*	*	*	*	*	*
Asian	*	*	*	*	*	*	*	*	*
NH/OPI	*	*	*	*	*	*	*	*	*
White	435.44	442.00	6.56	418.68	414.10	-4.57	416.05	426.48	10.43
Hispanic	*	*	*	*	*	*	*	*	*
ME	*	*	*	436.00	414.17	-21.83	*	*	*
EDS	*	*	*	*	*	*	*	*	*
Non-EDS	436.24	442.84	6.61	422.33	419.81	-2.52	416.40	423.25	6.85
SWD	366.80	369.60	2.80	289.60	313.60	24.00	326.00	304.60	-21.40
Non-SWD	440.33	449.69	9.36	438.06	430.49	-7.57	424.71	435.18	10.47
LEP	*	*	*	*	*	*	*	*	*
Not LEP	431.37	439.93	8.56	425.65	420.94	-4.71	415.57	423.09	7.52
Migrant	*	*	*	*	*	*	*	*	*
Not Migrant	430.83	439.93	9.10	423.47	418.04	-5.43	417.40	423.42	6.02
Female	439.55	450.64	11.09	443.26	435.70	-7.57	420.80	442.00	21.20
Male	421.89	427.53	5.63	408.34	406.21	-2.14	411.07	406.79	-4.28

* Results cannot be published without releasing personally identifiable information based upon the EED reporting protocol

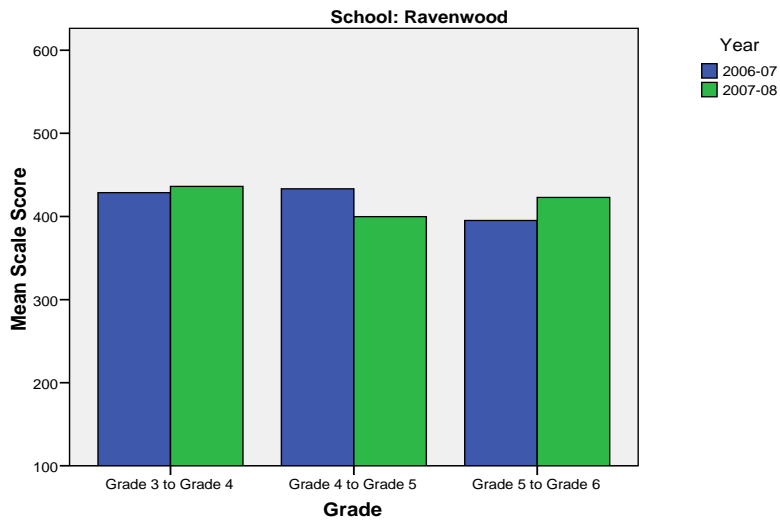
Change in Mean Scale Score in SBA Reading by Grade Between 2006-07 and 2007-08



Ravenwood Elementary School SBA Change Average Scale Score by NCLB Groups: Writing									
	Average Scale Score of Students Tested in District Both Years			Average Scale Score of Students Tested in District Both Years			Average Scale Score of Students Tested in District Both Years		
	Grade 3 in 06-07	Grade 4 in 07-08	Difference	Grade 4- in 06-07	Grade 5 in 07-08	Difference	Grade 5- in 06-07	Grade 6 in 07-08	Difference
All Students	428.68	436.20	7.51	433.29	399.73	-33.56	395.09	422.78	27.69
AF AM	*	*	*	*	*	*	*	*	*
AKNA/AI	*	*	*	*	*	*	*	*	*
Asian	*	*	*	*	*	*	*	*	*
NH/OPI	*	*	*	*	*	*	*	*	*
White	434.26	443.76	9.50	425.33	398.80	-26.53	401.02	424.95	23.93
Hispanic	*	*	*	*	*	*	*	*	*
ME	*	*	*	443.67	362.17	-81.50	*	*	*
EDS	*	*	*	*	*	*	*	*	*
Non-EDS	432.66	443.16	10.50	431.77	402.35	-29.42	396.92	424.38	27.46
SWD	332.60	358.40	25.80	306.00	310.80	4.80	326.40	312.00	-14.40
Non-SWD	442.03	447.00	4.97	446.83	409.19	-37.64	402.10	434.08	31.98
LEP	*	*	*	*	*	*	*	*	*
Not LEP	428.68	436.20	7.51	435.88	401.55	-34.33	395.09	422.78	27.69
Migrant	*	*	*	*	*	*	*	*	*
Not Migrant	428.88	437.23	8.35	433.20	400.29	-32.90	397.34	424.17	26.83
Female	448.59	467.09	18.50	456.78	423.91	-32.87	408.20	444.08	35.88
Male	405.63	400.42	-5.21	414.66	380.55	-34.10	383.79	404.41	20.62

* Results cannot be published without releasing personally identifiable information based upon the EED reporting protocol

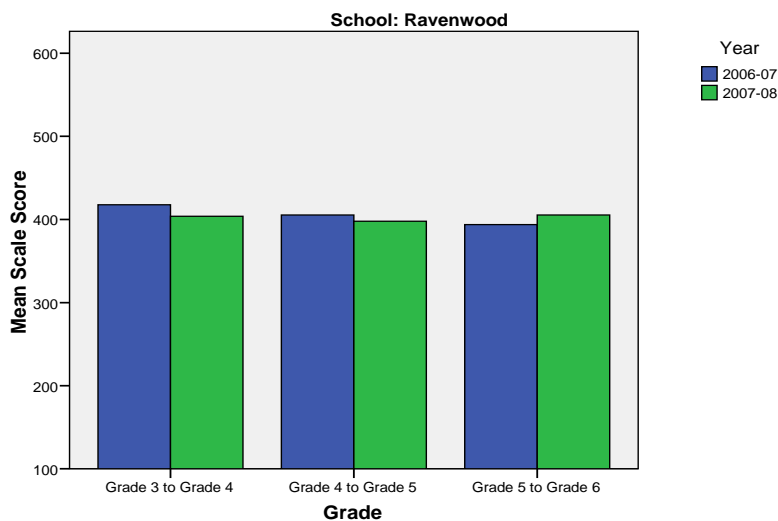
Change in Mean Scale Score in SBA Writing by Grade between 2006-07 and 2007-08



Ravenwood Elementary School SBA Change Average Scale Score by NCLB Groups: Mathematics									
	Average Scale Score of Students Tested in District Both Years			Average Scale Score of Students Tested in District Both Years			Average Scale Score of Students Tested in District Both Years		
	Grade 3 in 06-07	Grade 4 in 07-08	Difference	Grade 4- in 06-07	Grade 5 in 07-08	Difference	Grade 5- in 06-07	Grade 6 in 07-08	Difference
All Students	417.63	403.83	-13.80	405.35	397.94	-7.40	393.87	405.41	11.54
AF AM	*	*	*	*	*	*	*	*	*
AKNA/AI	*	*	*	*	*	*	*	*	*
Asian	*	*	*	*	*	*	*	*	*
NH/OPI	*	*	*	*	*	*	*	*	*
White	421.41	408.76	-12.65	397.28	392.78	-4.50	395.27	404.41	9.14
Hispanic	*	*	*	*	*	*	*	*	*
ME	*	*	*	389.67	379.50	-10.17	*	*	*
EDS	*	*	*	*	*	*	*	*	*
Non-EDS	419.47	409.42	-10.05	405.40	401.33	-4.06	391.12	402.87	11.75
SWD	330.60	287.00	-43.60	270.40	293.40	23.00	313.60	303.40	-10.20
Non-SWD	429.72	420.06	-9.67	419.70	409.06	-10.64	402.06	415.82	13.76
LEP	*	*	*	*	*	*	*	*	*
Not LEP	417.63	403.83	-13.80	407.49	399.49	-8.00	393.87	405.41	11.54
Migrant	*	*	*	*	*	*	*	*	*
Not Migrant	418.35	405.43	-12.93	405.69	398.18	-7.51	394.26	404.87	10.60
Female	424.55	419.41	-5.14	423.48	406.35	-17.13	387.64	407.28	19.64
Male	409.63	385.79	-23.84	390.97	391.28	0.31	399.24	403.79	4.55

* Results cannot be published without releasing personally identifiable information based upon the EED reporting protocol

Change in Mean Scale Score in SBA Mathematics by Grade between 2006-07 and 2007-08



Reading: SBA Results Compared for Ravenwood Elementary School, District and State Grades 3 Through 6															
	% Advanced Proficient			% Proficient			% Below Proficient			% Far Below Proficient			% Tested		
	School	District	State	School	District	State	School	District	State	School	District	State	School	District	State
All Students	63.56%	39.70%	35.67%	30.22%	43.89%	45.50%	4.00%	11.60%	13.02%	2.22%	4.80%	5.80%	98.68%	98.15%	97.98%
AF AM	*	20.73%	22.99%	*	54.18%	53.49%	*	17.79%	16.46%	*	7.30%	7.06%	100.00%	98.04%	97.49%
AKNA/AI	*	20.23%	14.62%	*	51.11%	48.17%	*	18.54%	24.83%	*	10.11%	12.37%	80.00%	96.88%	97.59%
Asian	66.67%	30.22%	28.26%	*	48.71%	51.04%	*	15.32%	15.32%	*	5.75%	5.38%	100.00%	97.64%	97.67%
NH/OPI	*	14.67%	N/A	*	51.03%	N/A	*	24.59%	N/A	*	9.71%	N/A	100.00%	98.98%	N/A
White	64.80%	52.75%	47.28%	28.49%	38.06%	42.41%	4.47%	6.69%	7.27%	2.23%	2.50%	3.03%	98.90%	98.68%	98.28%
Hispanic	54.55%	32.35%	31.74%	45.45%	46.43%	48.60%	*	14.67%	13.66%	*	6.55%	6.00%	100.00%	97.14%	97.32%
ME	68.42%	33.26%	34.76%	26.32%	48.25%	47.75%	*	13.47%	12.80%	*	5.01%	4.70%	100.00%	98.15%	98.03%
EDS	52.63%	22.85%	21.47%	42.11%	49.71%	48.65%	*	19.04%	20.31%	*	8.40%	9.57%	95.00%	97.50%	96.44%
Not EDS	64.56%	51.44%	46.31%	29.13%	39.84%	43.15%	4.37%	6.42%	7.56%	1.94%	2.30%	2.98%	99.04%	98.61%	99.16%
SWD	23.08%	10.08%	9.29%	34.62%	37.10%	37.96%	26.92%	32.15%	31.20%	15.38%	20.67%	21.55%	100.00%	94.28%	93.60%
Non-SWD	68.84%	45.02%	40.09%	29.65%	45.12%	46.77%	*	7.91%	9.98%	*	1.95%	3.17%	98.51%	98.88%	98.75%
LEP	*	4.97%	3.12%	*	39.93%	38.06%	*	37.14%	38.40%	*	17.96%	20.42%	100.00%	94.25%	96.11%
Not LEP	64.41%	42.78%	39.95%	29.73%	44.25%	46.48%	3.60%	9.33%	9.68%	2.25%	3.64%	3.88%	98.67%	98.51%	98.23%
Migrant	60.00%	27.01%	17.29%	*	50.34%	48.58%	*	16.44%	23.78%	*	6.21%	10.35%	100.00%	98.35%	98.50%
Not Migrant	63.64%	40.26%	36.97%	30.00%	43.61%	45.29%	4.09%	11.38%	12.26%	2.27%	4.74%	5.48%	98.65%	98.14%	97.94%
Female	73.87%	44.40%	39.45%	19.82%	43.41%	45.33%	*	8.75%	10.85%	*	3.44%	4.37%	98.23%	98.39%	98.31%
Male	53.51%	35.15%	32.09%	40.35%	44.37%	45.67%	3.51%	14.36%	15.08%	2.63%	6.13%	7.16%	99.13%	97.92%	97.66%

* Results cannot be published without releasing personally identifiable information based upon the EED reporting protocol

Writing: SBA Results Compared for Ravenwood Elementary School, District and State Grades 3 Through 6															
	% Advanced Proficient			% Proficient			% Below Proficient			% Far Below Proficient			% Tested		
	School	District	State	School	District	State	School	District	State	School	District	State	School	District	State
All Students	56.89%	34.87%	30.49%	36.89%	44.25%	44.50%	*	18.78%	22.32%	*	2.10%	2.69%	98.68%	98.11%	97.96%
AF AM	*	20.71%	20.51%	*	46.71%	48.68%	*	28.71%	27.18%	*	3.88%	3.63%	100.00%	98.15%	97.71%
AKNA/AI	*	17.15%	12.11%	*	45.31%	41.05%	*	33.38%	40.69%	*	4.15%	6.15%	80.00%	96.51%	97.64%
Asian	66.67%	30.17%	28.49%	33.33%	45.92%	45.93%	*	21.33%	23.31%	*	2.58%	2.27%	100.00%	97.56%	97.67%
NH/OPI	*	14.02%	N/A	*	42.89%	N/A	*	39.38%	N/A	*	3.71%	N/A	100.00%	99.18%	N/A
White	59.78%	45.85%	40.04%	34.08%	41.91%	44.71%	*	11.26%	13.97%	*	0.99%	1.28%	98.90%	98.66%	98.22%
Hispanic	54.55%	27.33%	27.00%	36.36%	47.25%	48.36%	*	22.54%	22.23%	*	2.88%	2.41%	100.00%	97.07%	97.36%
ME	42.11%	28.51%	29.14%	52.63%	47.68%	47.29%	*	21.31%	21.37%	*	2.51%	2.20%	100.00%	98.15%	97.96%
EDS	21.05%	18.92%	17.53%	68.42%	47.34%	45.15%	*	29.95%	32.95%	*	3.79%	4.37%	95.00%	97.50%	96.53%
Not EDS	60.19%	45.99%	40.21%	33.98%	42.10%	44.01%	*	10.99%	14.35%	*	0.92%	1.44%	99.04%	98.54%	99.06%
SWD	15.38%	7.09%	6.94%	53.85%	38.82%	37.02%	*	45.96%	47.34%	*	8.12%	8.69%	100.00%	94.28%	93.97%
Non-SWD	62.31%	39.86%	34.45%	34.67%	45.23%	45.76%	*	13.89%	18.11%	*	1.02%	1.69%	98.51%	98.83%	98.66%
LEP	*	4.71%	3.14%	*	37.05%	30.66%	*	50.57%	56.76%	*	7.67%	9.44%	100.00%	94.25%	96.18%
Not LEP	57.66%	37.55%	34.08%	36.04%	44.89%	46.32%	*	15.96%	17.79%	*	1.60%	1.81%	98.67%	98.47%	98.20%
Migrant	*	21.44%	14.20%	80.00%	48.58%	42.55%	*	26.63%	38.57%	*	3.35%	4.68%	100.00%	98.51%	98.58%
Not Migrant	58.18%	35.46%	31.63%	35.91%	44.06%	44.64%	*	18.43%	21.18%	*	2.04%	2.55%	98.65%	98.09%	97.92%
Female	71.17%	42.63%	37.48%	24.32%	42.50%	43.42%	*	13.62%	17.40%	*	1.26%	1.70%	98.23%	98.32%	98.22%
Male	42.98%	27.36%	23.87%	49.12%	45.96%	45.52%	*	23.78%	26.98%	*	2.91%	3.63%	99.13%	97.90%	97.72%

* Results cannot be published without releasing personally identifiable information based upon the EED reporting protocol

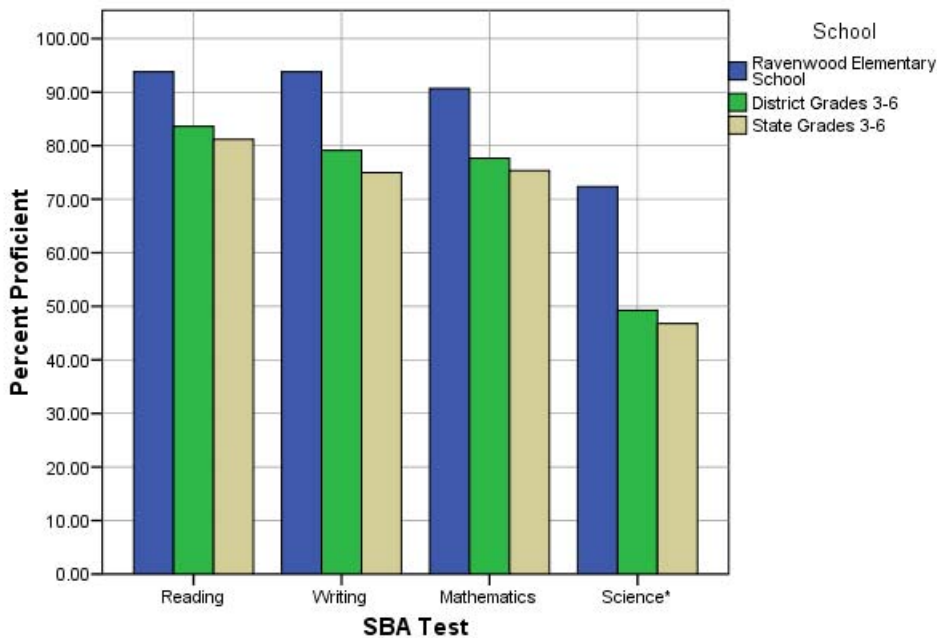
Mathematics: SBA Results Compared for Ravenwood Elementary School, District and State Grades 3 Through 6															
	% Advanced Proficient			% Proficient			% Below Proficient			% Far Below Proficient			% Tested		
	School	District	State	School	District	State	School	District	State	School	District	State	School	District	State
All Students	58.22%	39.81%	36.08%	32.44%	37.84%	39.26%	5.78%	12.46%	13.78%	3.56%	9.88%	10.88%	98.68%	98.52%	98.12%
AF AM	*	19.48%	22.09%	*	40.14%	41.60%	*	20.19%	18.61%	*	20.19%	17.70%	100.00%	98.38%	97.78%
AKNA/AI	*	23.20%	18.26%	*	39.51%	39.14%	*	19.22%	21.79%	*	18.07%	20.81%	80.00%	96.96%	97.72%
Asian	66.67%	37.02%	34.29%	33.33%	41.20%	41.23%	*	13.76%	14.10%	*	8.03%	10.38%	100.00%	99.27%	98.99%
NH/OPI	*	18.52%	N/A	*	38.07%	N/A	*	20.16%	N/A	*	23.25%	N/A	100.00%	99.39%	N/A
White	59.78%	51.12%	45.75%	31.28%	35.15%	38.35%	5.59%	8.41%	9.81%	3.35%	5.32%	6.09%	98.90%	98.69%	98.17%
Hispanic	54.55%	31.85%	31.11%	45.45%	40.04%	42.19%	*	15.02%	15.10%	*	13.09%	11.60%	100.00%	98.66%	98.47%
ME	52.63%	33.75%	35.45%	31.58%	41.21%	40.61%	*	13.93%	13.30%	*	11.11%	10.64%	100.00%	98.26%	98.00%
EDS	52.63%	24.26%	23.31%	31.58%	41.50%	40.98%	*	17.54%	18.60%	*	16.70%	17.11%	95.00%	98.14%	96.77%
Not EDS	58.74%	50.70%	45.67%	32.52%	35.28%	37.96%	5.83%	8.91%	10.16%	2.91%	5.12%	6.21%	99.04%	98.79%	99.16%
SWD	23.08%	12.52%	12.06%	23.08%	31.53%	32.14%	30.77%	23.68%	23.60%	23.08%	32.27%	32.20%	100.00%	94.19%	93.99%
Non-SWD	62.81%	44.69%	40.12%	33.67%	38.97%	40.45%	*	10.46%	12.13%	*	5.88%	7.30%	98.51%	99.34%	98.85%
LEP	*	8.22%	6.05%	*	36.74%	34.10%	*	24.50%	27.43%	*	30.54%	32.42%	100.00%	97.95%	97.56%
Not LEP	59.01%	42.73%	40.09%	31.53%	37.94%	39.95%	5.86%	11.35%	11.96%	3.60%	7.98%	8.01%	98.67%	98.57%	98.19%
Migrant	*	30.94%	22.37%	60.00%	43.65%	40.27%	*	14.21%	20.36%	*	11.20%	17.00%	100.00%	98.68%	98.54%
Not Migrant	58.64%	40.21%	37.05%	31.82%	37.58%	39.19%	5.91%	12.38%	13.31%	3.64%	9.83%	10.45%	98.65%	98.51%	98.09%
Female	58.56%	41.01%	36.83%	33.33%	38.32%	39.88%	5.41%	11.59%	13.34%	2.70%	9.09%	9.96%	98.23%	98.71%	98.31%
Male	57.89%	38.66%	35.38%	31.58%	37.38%	38.67%	6.14%	13.30%	14.20%	4.39%	10.66%	11.75%	99.13%	98.34%	97.94%

* Results cannot be published without releasing personally identifiable information based upon the EED reporting protocol

Science: SBA Results Compared for Ravenwood Elementary School, District and State Grade 4															
	% Advanced Proficient			% Proficient			% Below Proficient			% Far Below Proficient			% Tested		
	School	District	State	School	District	State	School	District	State	School	District	State	School	District	State
All Students	42.55%	23.68%	22.1%	29.79%	25.57%	24.7%	21.28%	31.70%	31.3%	6.38%	19.06%	21.9%	97.92%	97.81%	95.35%
AF AM	*	9.18%	8.9%	*	18.84%	23.3%	*	39.13%	38.0%	*	32.85%	29.8%	100.00%	98.57%	94.49%
AKNA/AI	*	6.54%	6.8%	*	21.50%	14.2%	*	42.99%	35.2%	*	28.97%	43.8%	100.00%	96.40%	94.98%
Asian	*	10.18%	13.4%	*	21.40%	19.4%	*	39.30%	37.5%	*	29.12%	29.7%	100.00%	98.28%	97.39%
NH/OPI	*	6.57%	N/A	*	8.03%	N/A	*	34.31%	N/A	*	51.09%	N/A	N/A	98.56%	N/A
White	46.15%	36.40%	32.3%	30.77%	29.08%	29.9%	*	25.33%	27.3%	*	9.19%	10.5%	97.50%	97.87%	94.97%
Hispanic	*	16.17%	18.2%	*	26.15%	26.0%	*	32.08%	33.9%	*	25.61%	21.9%	100.00%	97.12%	96.39%
ME	*	16.06%	18.5%	*	26.12%	26.8%	*	37.47%	35.9%	*	20.34%	18.7%	100.00%	98.32%	96.90%
EDS	*	8.34%	11.0%	*	22.44%	20.1%	*	38.10%	34.7%	*	31.12%	34.2%	100.00%	97.73%	94.99%
Not EDS	45.45%	35.00%	31.2%	27.27%	27.88%	28.5%	*	26.97%	28.5%	*	10.15%	11.9%	97.78%	97.87%	95.64%
SWD	*	8.38%	7.7%	*	16.38%	15.2%	66.67%	36.57%	36.6%	*	38.67%	40.5%	100.00%	93.25%	91.70%
Non-SWD	46.34%	26.43%	24.7%	31.71%	27.22%	26.4%	14.63%	30.82%	30.4%	7.32%	15.53%	18.5%	97.62%	98.68%	96.04%
LEP	*	2.00%	1.5%	*	5.14%	3.8%	*	34.00%	28.3%	*	58.86%	66.5%	N/A	96.15%	95.67%
Not LEP	42.55%	26.13%	25.2%	29.79%	27.88%	27.9%	21.28%	31.44%	31.8%	6.38%	14.55%	15.1%	97.92%	98.00%	95.30%
Migrant	*	9.70%	9.0%	*	26.87%	15.3%	*	39.55%	34.3%	*	23.88%	41.4%	100.00%	97.10%	97.32%
Not Migrant	43.48%	24.24%	23.0%	28.26%	25.51%	25.3%	21.74%	31.38%	31.1%	6.52%	18.86%	20.5%	97.87%	97.84%	95.21%
Female	40.00%	22.73%	20.8%	28.00%	25.78%	25.2%	*	33.63%	32.6%	*	17.87%	21.4%	96.15%	98.05%	95.43%
Male	45.45%	24.61%	23.4%	31.82%	25.36%	24.2%	*	29.80%	30.1%	*	20.23%	22.3%	100.00%	97.58%	95.27%

* Results cannot be published without releasing personally identifiable information based upon the EED reporting protocol

2007-08 SBA Results Compared for Ravenwood Elementary School, District and State



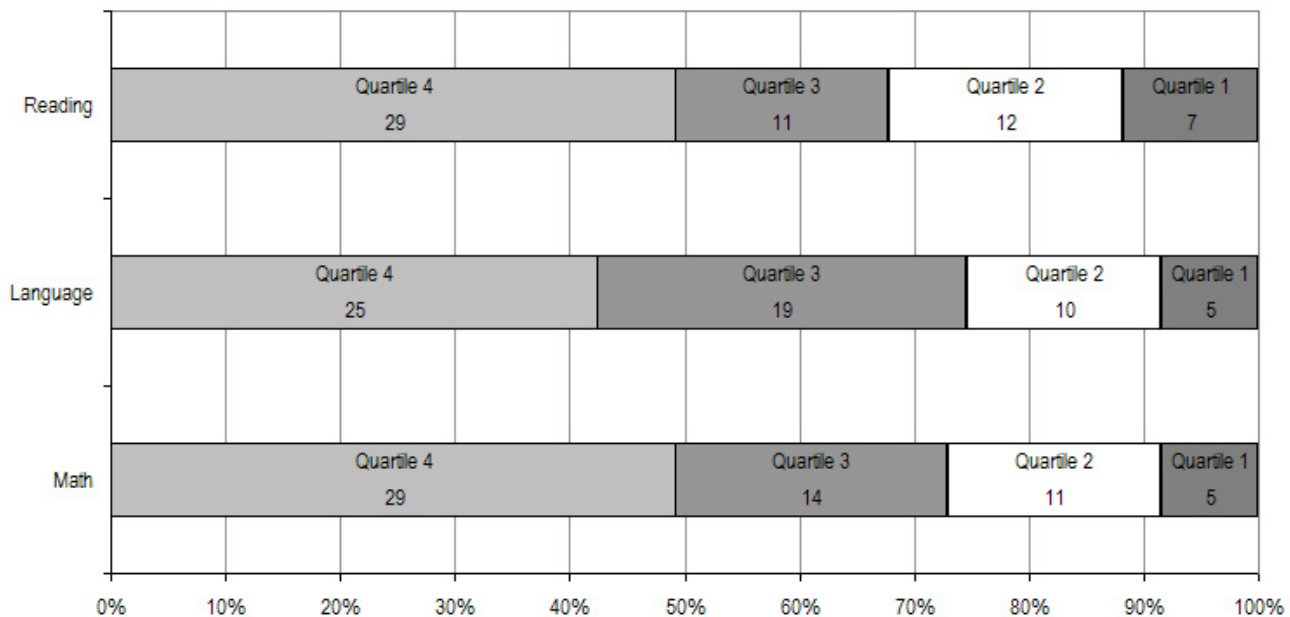
* 2007-08 was the first year Science was administered for grades 4, 8 and 10 on the SBA.

Ravenwood Elementary School TerraNova Grade 5 Percent in Each Quartile								
Reading	Above Average		Average				Below Average	
	4th Quartile (76-99 percentile)		3rd Quartile (51-75 percentile)		2nd Quartile (26-50 percentile)		1st Quartile (1-25 percentile)	
	School	District	School	District	School	District	School	District
07-08	49.15%	25.65%	18.64%	24.08%	20.34%	23.73%	11.86%	26.55%
06-07	46.0%	33.1%	39.7%	26.1%	7.9%	23.6%	6.3%	17.2%
05-06	59.7%	30.4%	20.8%	26.8%	15.3%	24.5%	4.2%	18.3%
04-05	58.2%	29.2%	25.5%	27.6%	9.1%	24.5%	7.3%	18.7%
03-04	45.9%	30.6%	31.1%	26.9%	16.4%	24.2%	6.6%	18.3%
Language								
07-08	42.37%	26.79%	32.20%	27.20%	16.95%	24.12%	8.47%	21.89%
06-07	54.0%	34.7%	31.7%	26.9%	9.5%	21.4%	4.8%	17.0%
05-06	52.8%	34.0%	29.2%	26.5%	13.9%	22.0%	4.2%	17.5%
04-05	61.8%	32.1%	25.5%	28.3%	7.3%	21.2%	5.5%	18.4%
03-04	52.5%	34.1%	27.9%	26.5%	8.2%	21.7%	11.5%	17.7%
Mathematics								
07-08	49.15%	25.45%	23.73%	26.40%	18.64%	24.47%	8.47%	23.68%
06-07	49.2%	29.7%	33.3%	31.6%	*	21.2%	*	17.4%
05-06	56.9%	28.4%	25.0%	31.9%	13.9%	22.3%	4.2%	17.5%
04-05	56.4%	26.9%	29.1%	31.1%	7.3%	22.9%	7.3%	19.1%
03-04	40.0%	28.3%	38.3%	29.3%	15.0%	22.6%	6.7%	19.8%

The double bold line indicates a change from the TerraNova 2nd edition to the TerraNova 3rd edition.

* Results cannot be published without releasing personally identifiable information based upon the EED reporting protocol

2007-08 TerraNova 3rd Edition Grade 5 Percent and Count of Students in Each Quartile For Ravenwood Elementary School



Climate Survey Results for Ravenwood Elementary School

The Anchorage School District administered the School Climate and Connectedness Surveys in spring 2008 to students in grades 5-12, all school staff and parents/guardians of students in grades K-12. The surveys were done to provide schools with information about perceptions and experiences related to school climate for use in setting school goals and redirecting resources. In the spring of 2008 grades 3 and 4 students were involved in a pilot survey for measuring school climate and connectedness. The results are currently under review by the American Institutes for Research.

Respondents were asked to answer a series of questions that were related to a certain concept. For each item, there were five options from which to choose a response. The answer options ranged from strongly disagree (1) to strongly agree (5).

Student Survey Response Rate Grades 5-12			
	Ravenwood Elementary School	Overall Elementary Schools	District**
# Surveys Completed	109	5,579	21,629
# Reportable Surveys	95	4,969	18,654
# Students Enrolled*	118	6,331	28,945
Reportable Response Rate	80.51%	78.49%	64.45%

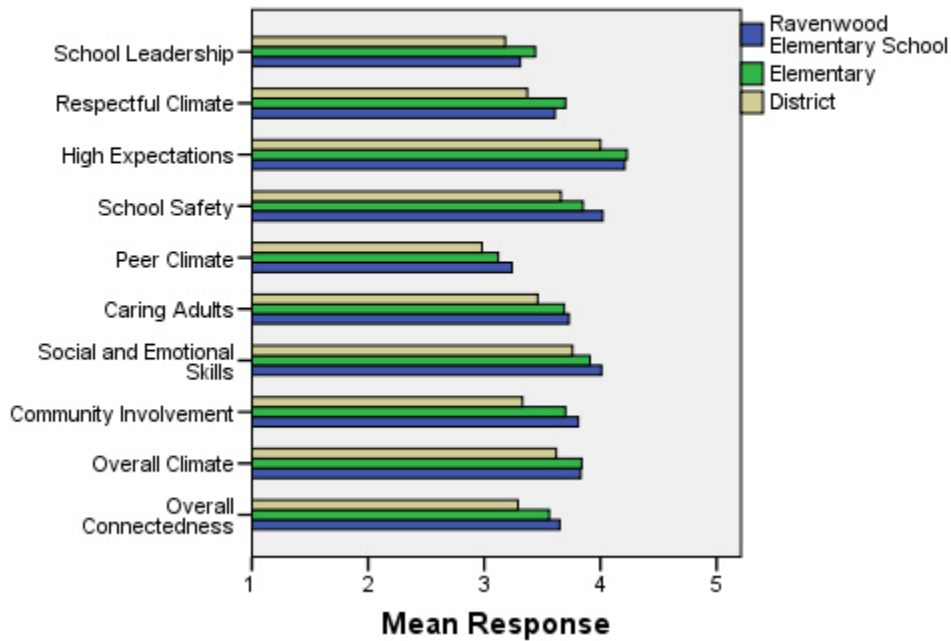
*Number enrolled as of April 1, 2008

**District data does not include KCC responses

Each question in the survey related to a factor or concept, and a score was calculated based on the mean response for the questions related to each factor. The factors measured in the survey were:

- **School Leadership and Student Involvement:** This factor reflects students' feelings about the decision making of school leaders as well as student participation in the school governance. Students selected responses between 1 and 5 where 1 indicates a low level of school leadership and student involvement and 5 indicates a high level of school leadership and student involvement.
- **Respectful Climate:** This factor reflects students' feelings about fairness of rules and respect for students' contributions. Students selected responses between 1 and 5 where 1 indicates a lack of a respectful climate and 5 indicates a highly respectful climate for students.
- **High Expectations:** This factor reflects students' feelings about their own expectations as well as those of adults in their school and community. Students selected responses between 1 and 5 where 1 indicates a lack of high expectations and 5 indicates a high level of high expectations.
- **School Safety:** This factor reflects students' feelings about bullies and gangs at school as well as general crime and violence in the community. Students selected responses between 1 and 5 where 1 indicates a low level of school safety and 5 indicates a high level of school safety.
- **Peer Climate:** This factor reflects students' feelings about how respectful students are to one another and how helpful students are to other students. Students selected responses between 1 and 5 where 1 indicates a more negative peer climate and 5 indicates a very positive peer climate at the school.
- **Caring Adults:** This factor reflects students' feelings about how close they feel to adults in the school. Students selected responses between 1 and 5 where 1 indicates a lack of caring adult relationships and 5 indicates strong caring adult relationships at the school.
- **Social and Emotional Learning:** This factor reflects students' ability to think about the consequences of their actions and to empathize with others. Students selected responses between 1 and 5 where 1 indicates that students at the school perceive themselves as having poorer social and emotional learning, and 5 indicates higher levels of social and emotional learning.
- **Community Involvement:** This factor reflects students' feelings about how supportive and welcoming the school is with parents and the community. Students selected responses between 1 and 5 where 1 indicates a less supportive and welcoming environment and 5 indicates a more supportive and welcoming environment.
- **Overall Climate:** The overall climate score was computed as the mean of three scales: school leadership, high expectations and school safety.
- **Overall Connectedness:** Overall connectedness score was computed as a mean of four scales: respectful climate, peer climate, caring adults and community involvement.

Climate and Connectedness Student Survey - Ravenwood



Student Survey Mean Response by Factors Related to School Climate - Overall District			
	Ravenwood Elementary School	Overall Elementary Schools	District
School Leadership	3.31	3.44	3.18
Respectful Climate	3.61	3.70	3.37
High Expectations	4.21	4.23	4.00
School Safety	4.02	3.85	3.66
Peer Climate	3.24	3.12	2.98
Caring Adults	3.73	3.69	3.46
Social and Emotional Skills	4.01	3.91	3.76
Community Involvement	3.81	3.70	3.33
Overall Climate	3.83	3.84	3.62
Overall Connectedness	3.65	3.56	3.29

Range is from a low of 1 to a high of 5

Students were also asked to answer questions related to school danger. The following table provides the responses for those questions:

Student Survey Results of the School Danger Questions - Percent of Students Responding in Each Category					
	0 Times	1-2 Times	3-6 Times	7-12 Times	> 12 Times
Ravenwood Elementary School					
Under the influence of drugs?	91.40%	5.38%	2.15%	0.00%	1.08%
Under the influence of alcohol?	92.47%	5.38%	0.00%	1.08%	1.08%
Destroy things (vandalism)?	54.95%	23.08%	15.38%	3.30%	3.30%
Get into fights?	32.26%	36.56%	16.13%	6.45%	8.60%
Steal things?	52.17%	26.09%	9.78%	5.43%	6.52%
Threaten or bully?	33.33%	33.33%	13.98%	6.45%	12.90%
Under the influence of inhalants?	75.27%	13.98%	2.15%	3.23%	5.38%
Carry weapons?	70.97%	20.43%	4.30%	2.15%	2.15%
Overall Elementary Schools					
Under the influence of drugs?	91.87%	5.65%	1.22%	0.31%	0.96%
Under the influence of alcohol?	91.42%	6.01%	1.16%	0.51%	0.90%
Destroy things (vandalism)?	46.82%	32.08%	12.45%	3.30%	5.36%
Get into fights?	22.32%	35.75%	22.56%	7.96%	11.41%
Steal things?	49.79%	27.92%	12.01%	4.33%	5.95%
Threaten or bully?	32.34%	28.83%	17.08%	7.78%	13.97%
Under the influence of inhalants?	71.03%	17.07%	6.14%	2.63%	3.12%
Carry weapons?	79.22%	15.35%	3.17%	0.59%	1.68%
District					
Under the influence of drugs?	60.45%	15.05%	9.54%	3.92%	11.04%
Under the influence of alcohol?	63.11%	16.37%	8.90%	4.43%	7.19%
Destroy things (vandalism)?	41.26%	29.47%	15.45%	5.88%	7.94%
Get into fights?	26.40%	35.20%	21.96%	7.11%	9.33%
Steal things?	44.80%	25.68%	13.81%	6.98%	8.74%
Threaten or bully?	32.21%	26.21%	16.68%	9.27%	15.63%
Under the influence of inhalants?	72.79%	14.21%	5.66%	2.48%	4.87%
Carry weapons?	69.45%	19.15%	5.34%	2.01%	4.06%

Student Survey Results of the Mean Factor Score by Ethnicity (Self-Reported)							
	AKNA/AI	AF AM	Hispanic	Asian/NH	White	Other	Multi-Ethnic
Ravenwood Elementary School							
School Leadership	3.54	2.80	3.10	4.13	3.29	3.20	2.97
Respectful Climate	3.86	1.83	3.50	4.56	3.55	4.02	3.00
High Expectations	4.50	4.43	3.79	4.43	4.22	4.24	3.94
School Safety	3.93	3.60	3.80	4.87	4.07	3.69	3.74
Peer Climate	3.52	1.40	3.70	4.13	3.21	3.10	3.00
Caring Adults	4.20	3.40	3.10	4.33	3.69	3.95	3.10
Social and Emotional Skills	4.12	3.67	3.10	4.53	4.01	4.08	3.86
Community Involvement	4.07	3.00	3.14	3.76	3.86	3.75	3.41
Overall Climate	4.00	3.61	3.56	4.51	3.85	3.80	3.55
Overall Connectedness	4.08	2.41	3.36	4.20	3.61	3.68	3.26
Overall Elementary Schools							
School Leadership	3.56	3.50	3.52	3.55	3.37	3.44	3.42
Respectful Climate	3.75	3.60	3.66	3.72	3.71	3.69	3.63
High Expectations	4.12	4.23	4.23	4.22	4.26	4.19	4.25
School Safety	3.75	3.63	3.73	3.68	4.03	3.66	3.79
Peer Climate	3.12	2.94	3.12	3.18	3.16	3.05	3.05
Caring Adults	3.64	3.73	3.64	3.59	3.74	3.60	3.76
Social and Emotional Skills	3.86	3.84	3.91	3.95	3.93	3.90	3.89
Community Involvement	3.66	3.60	3.67	3.66	3.75	3.66	3.70
Overall Climate	3.81	3.79	3.84	3.81	3.89	3.76	3.82
Overall Connectedness	3.56	3.49	3.51	3.53	3.60	3.49	3.56
District							
School Leadership	3.33	3.14	3.19	3.28	3.14	3.17	3.15
Respectful Climate	3.48	3.18	3.32	3.39	3.39	3.37	3.33
High Expectations	3.98	3.94	3.96	4.02	4.02	4.00	4.01
School Safety	3.60	3.48	3.55	3.47	3.78	3.51	3.62
Peer Climate	3.01	2.85	2.94	3.05	3.00	2.92	2.93
Caring Adults	3.49	3.43	3.37	3.33	3.51	3.42	3.46
Social and Emotional Skills	3.73	3.66	3.73	3.81	3.78	3.75	3.74
Community Involvement	3.37	3.22	3.31	3.29	3.34	3.34	3.31
Overall Climate	3.64	3.52	3.57	3.59	3.65	3.56	3.60
Overall Connectedness	3.33	3.17	3.24	3.26	3.31	3.26	3.27

The response rate is not high enough to provide statistically reliable results for Ravenwood Elementary School's Staff Survey Results.

Parent/Guardian Survey Response Rate			
	Ravenwood Elementary School	Overall Elementary Schools	District**
# Surveys Completed	103	3,933	7,415
# Primary Guardians*	434	23,668	48,693
Response Rate	23.73%	16.62%	15.23%

*Number students enrolled as of April 1, 2008 without dual guardians included

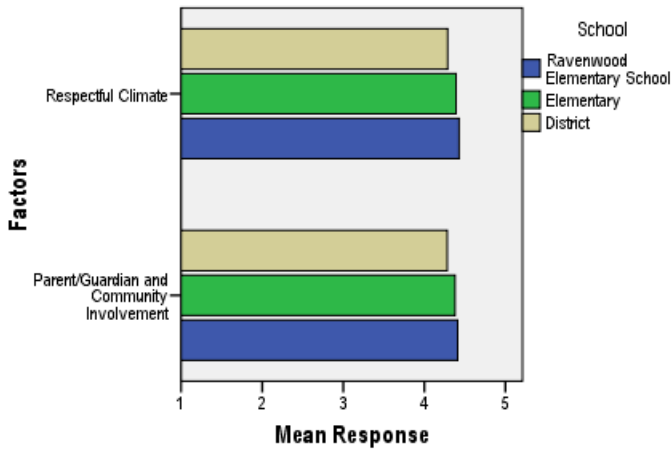
**District data

- 1) does not include KCC responses;
- 2) does include responses without a school designation

Two factors are calculated from the Parent/Guardian Survey. All results other than the factor scores below are reported by individual question: questions in the graphs are condensed phrases from the full question, while questions in the tables are the full question.

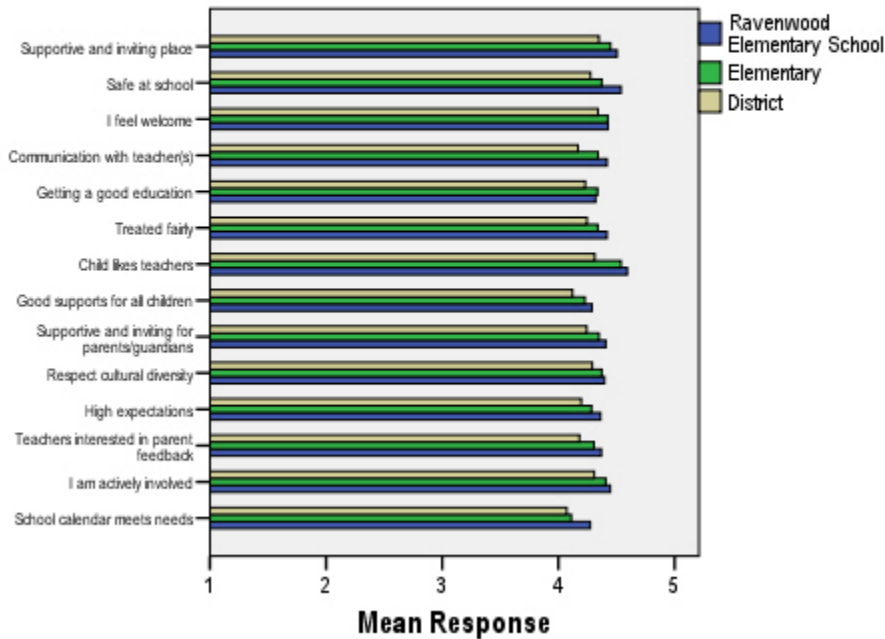
- **Respectful Climate:** This factor is calculated by determining the mean of five questions: 1) My child’s school is a supportive and inviting place, 2) I feel welcome at this school, 3) I am satisfied with communication with my child’s teacher(s), 4) This school is a supportive and inviting place for parents/guardians and 5) Adults at this school respect cultural diversity.
- **Parent/Guardian and Community Involvement:** This factor is calculated by determining the mean of five questions: 1) I feel welcome at this school, 2) This school is a supportive and inviting place for parents/guardians, 3) Adults at this school respect cultural diversity, 4) Teacher’s at my child’s school are interested in what I have to say and 5) I feel like I am actively involved in my child’s education.

Parent/Guardian Survey Mean Factor Scores (Range is from a low of 1 to a high of 5)



Parent/Guardian Factor Scores			
	Ravenwood Elementary School	Overall Elementary Schools	District
Respectful Climate	4.43	4.39	4.29
Parent/Guardian and Community Involvement	4.41	4.38	4.28

Climate and Connectedness Parent/Guardian Survey - Ravenwood



Parent/Guardian Mean Response by Questions Related to School Climate - Overall

	Ravenwood Elementary School	Overall Elementary Schools	District
My child's school is a supportive and inviting place	4.50	4.45	4.35
My child is safe at school	4.54	4.37	4.28
I feel welcome at this school	4.43	4.43	4.34
I am satisfied with communication with my child's teacher(s)	4.42	4.34	4.17
My child is getting a good education at this school	4.32	4.34	4.23
My child is treated fairly at school	4.42	4.34	4.25
My child likes his/her teachers	4.59	4.54	4.31
At this school, there are good supports for all children, including children with learning disabilities	4.29	4.23	4.12
This school is a supportive and inviting place for parents/guardians	4.41	4.35	4.24
Adults at this school respect cultural diversity	4.40	4.37	4.29
Adults at this school have high expectations of my child	4.36	4.29	4.20
Teachers at my child's school are interested in what I have to say	4.37	4.31	4.18
I feel like I am actively involved in my child's education	4.45	4.41	4.31
The district's school calendar meets the needs of my child and our family	4.27	4.11	4.07

Range is from a low of 1 to a high of 5

Parent/Guardian Mean Response by Questions Related to School Climate by Ethnicity (Self-Reported)							
Ravenwood Elementary School	AF AM	AKNA/AI	Asian/NH	White	Hispanic	ME	Other
My child's school is a supportive and inviting place	5.00	4.40	5.00	4.51	3.67	4.50	5.00
My child is safe at school	5.00	4.20	5.00	4.54	4.67	4.50	5.00
I feel welcome at this school	5.00	4.20	5.00	4.43	3.67	4.50	5.00
I am satisfied with communication with my child's teacher(s)	5.00	4.40	5.00	4.37	4.67	4.50	5.00
My child is getting a good education at this school	5.00	4.00	5.00	4.27	5.00	4.50	5.00
My child is treated fairly at school	5.00	3.80	5.00	4.42	4.33	4.50	5.00
My child likes his/her teachers	5.00	4.60	5.00	4.57	4.67	4.50	5.00
At this school, there are good supports for all children, including children with learning disabilities	5.00	3.60	5.00	4.29	4.67	4.00	5.00
This school is a supportive and inviting place for parents/guardians	5.00	4.20	5.00	4.40	4.00	4.50	5.00
Adults at this school respect cultural diversity	5.00	3.80	4.50	4.44	3.67	4.50	5.00
Adults at this school have high expectations of my child	5.00	4.20	4.50	4.34	4.67	4.50	5.00
Teachers at my child's school are interested in what I have to say	5.00	4.20	5.00	4.31	5.00	4.50	5.00
I feel like I am actively involved in my child's education	5.00	4.00	5.00	4.44	4.67	4.50	5.00
The district's school calendar meets the needs of my child and our family	5.00	4.00	4.50	4.26	5.00	4.50	3.00
Overall Elementary Schools							
My child's school is a supportive and inviting place	4.36	4.47	4.44	4.47	4.51	4.46	4.26
My child is safe at school	4.40	4.42	4.36	4.38	4.42	4.35	4.23
I feel welcome at this school	4.38	4.37	4.48	4.44	4.47	4.49	4.27
I am satisfied with communication with my child's teacher(s)	4.30	4.40	4.36	4.35	4.45	4.35	4.19
My child is getting a good education at this school	4.28	4.40	4.40	4.33	4.44	4.38	4.04
My child is treated fairly at school	4.15	4.34	4.32	4.38	4.37	4.33	4.14
My child likes his/her teachers	4.41	4.52	4.53	4.57	4.47	4.55	4.49
At this school, there are good supports for all children, including children with learning disabilities	4.06	4.32	4.31	4.22	4.31	4.31	4.05
This school is a supportive and inviting place for parents/guardians	4.22	4.31	4.38	4.36	4.42	4.44	4.11
Adults at this school respect cultural diversity	4.25	4.28	4.27	4.43	4.38	4.39	4.19
Adults at this school have high expectations of my child	4.26	4.30	4.27	4.31	4.36	4.28	3.95
Teachers at my child's school are interested in what I have to say	4.25	4.35	4.24	4.33	4.39	4.31	4.16
I feel like I am actively involved in my child's education	4.48	4.38	4.31	4.45	4.40	4.40	4.20
The district's school calendar meets the needs of my child and our family	4.25	4.22	4.19	4.10	4.20	4.08	3.62
District							
My child's school is a supportive and inviting place	4.20	4.37	4.37	4.37	4.41	4.37	4.20
My child is safe at school	4.18	4.31	4.31	4.29	4.29	4.30	4.11
I feel welcome at this school	4.18	4.31	4.36	4.36	4.38	4.40	4.23
I am satisfied with communication with my child's teacher(s)	3.99	4.21	4.23	4.16	4.32	4.20	4.03
My child is getting a good education at this school	4.09	4.28	4.31	4.23	4.33	4.26	4.03
My child is treated fairly at school	3.94	4.21	4.24	4.29	4.30	4.24	4.08
My child likes his/her teachers	4.06	4.33	4.35	4.33	4.31	4.34	4.20
At this school, there are good supports for all children, including children with learning disabilities	3.90	4.19	4.23	4.11	4.24	4.18	3.97
This school is a supportive and inviting place for parents/guardians	4.05	4.21	4.29	4.26	4.31	4.31	4.05
Adults at this school respect cultural diversity	4.02	4.20	4.22	4.34	4.29	4.31	4.17
Adults at this school have high expectations of my child	4.05	4.24	4.21	4.21	4.26	4.20	3.94
Teachers at my child's school are interested in what I have to say	4.04	4.22	4.17	4.20	4.28	4.19	4.05
I feel like I am actively involved in my child's education	4.36	4.29	4.24	4.33	4.37	4.30	4.20
The district's school calendar meets the needs of my child and our family	4.18	4.19	4.16	4.06	4.21	4.02	3.66

Range is from a low of 1 to a high of 5