

### Rogers Park Elementary School Overview

#### Statement of Program

Rogers Park Elementary School promotes instructional excellence through a student-oriented program, focusing on the development of each individual child. Recognizing that students have unique learning styles, Rogers Park affords opportunities for success with access to special services and resources for students who are exceptional. Two educational programs exist at Rogers Park - a K-6 neighborhood program and a K-6 highly gifted program. Cooperation of school professionals, parents, and community members ensures support for each student's personal development. Rogers Park provides a safe, secure environment for all students.

From the School Report Card

School Goals	
Goal	Level of Achievement
The number of students in grades 1-6 rated proficient on the district reading assessment will increase by 2 percent.	Not Attained
Students in grades 1-6 will demonstrate an average of 1 point growth based on the pre to post-Six Traits writing assessments.	Attained

From the School Report Card

Budget*	
2006-07 Actual Expenditures	\$2,262,603
2007-08 Revised Budgeted Amount	\$2,826,795
2008-09 Proposed Budget	\$2,673,645

\*Dollars budgeted or expended are general fund only  
From IFAS

Rogers Park Elementary School Characteristics			
	School	District	Source of Information
Membership	542	48,858	Fall OASIS
Capacity	100.56%	N/A	2008-18 ASD Capital Improvement Plan
Attendance Rate	93.39%	92.83%	NCLB Summer Data Collection
Retention Rate K-8	0.18%	0.60%	SMS and NCLB Summer Data Collection
Transiency Rate	20.20%	26.07%	NCLB Summer Data Collection
Economically Disadvantaged	151	17,717	Fall OASIS
Average Weekly Volunteer Hours	20	4,660	Department of Education Report Card Report
Students Taking the Alternate Assessment	0	228	SMS
Change in Enrollment	-7.51%	-0.76%	Fall Oasis

Teacher Qualification				
Number of Teachers	Percent Fully Licensed	Percent With Advanced Degrees	Number Nationally Board Certified	Percent of Classes Taught by "Highly Qualified Teachers"
42	100.00%	33.33%	0	100.00%

Rogers Park Elementary School Business Partnerships
Village Inn, Northern Lights Boulevard

From the School Report Card

Ethnicity Report							
African-American/Black	Alaska Native/American Indian	Asian	Native Hawaiian/Other Pacific Islander	White	Hispanic	Multi-Ethnic	Total
28	34	48	18	294	43	77	542

From Fall Oasis

Full Academic Year		
Students Enrolled	Students Enrolled for FAY	Percent FAY
550	501	91.09%

From participation file (Grades 3-10)

Rogers Park Elementary School  
2007-08 Adequate Yearly Progress  
Status Report

Meets AYP under Safe Harbor

AMO For Language Arts: 77.18%  
AMO For Mathematics: 66.09%

Group	Participation Rate				"FAY" (D) Tested & Enrolled "FAY"	Language Arts Performance				Mathematics Performance			
	(A) Number Enrolled	(B) Number Tested	Participation Rate (%)	(C) Participation Rate Met		(E) Proficient on LA	(F) Percent Proficient on LA	(G) LA Target	(H) Met AMO for LA	(I) Proficient on Mathematics	(J) Percent Proficient in Mathematics	(K) Mathematics Target	(L) Met AMO for Mathematics
All Students	334	330	98.8%	Yes	303	262	86.5%	71.6%	Yes	256	84.5%	59.8%	Yes
AF AM	15	15	N/A	N/A	N/A	N/A	N/A	N/A	N/A	N/A	N/A	N/A	N/A
AKNA/AI	24	24	100%	Yes	N/A	N/A	N/A	N/A	N/A	N/A	N/A	N/A	N/A
Asian/NH/OPI	39	37	94.9%	Yes	35	25	71.4%	60.7%	Yes	25	71.4%	47.4%	Yes
White	185	184	99.5%	Yes	177	165	93.2%	69.8%	Yes	164	92.7%	57.8%	Yes
Hispanic	20	20	N/A	N/A	N/A	N/A	N/A	N/A	N/A	N/A	N/A	N/A	N/A
ME	51	50	98%	Yes	42	36	85.7%	62.1%	Yes	36	85.7%	49.1%	Yes
EDS	93	91	97.8%	Yes	70	48	68.6%	65.5%	Yes	46	65.7%	52.9%	Yes
SWD	40	39	97.5%	Yes	36	20	55.6%	60.9%	Yes-SH	18	50%	47.7%	Yes
LEP	56	54	96.4%	Yes	48	32	66.7%	63.1%	Yes	34	70.8%	50.2%	Yes

Attendance Rate: Met

93.4% (Threshold is 85%)

N/A is used to indicate:

(1) Subgroups with 20 or fewer students enrolled on the first day of testing shall not be included in participation rate calculation.

(2) Subgroups with 25 or fewer students enrolled for the "full academic year" shall not have the performance score computed.

\* For the groups where the number enrolled is less than or equal to 40, participation is met when no more than two miss the test. Groups can also meet this target using the average of the past two or three years.

\*\* When a group achieves a "Yes" without meeting the listed target, it has done so using either the 99% confidence interval or Safe Harbor.

\*\*\* The results cannot be published without releasing personally identifiable information based upon the EED reporting protocol.

This document was prepared by the ASD Assessment and Evaluation Department.

7/10/2008

Rogers Park Elementary School  
2007-08 Adequate Yearly Progress  
Growth Report

The AYP growth reports are generated by the Alaska State Department of Education and Early Development. The reports can be found online at: [http://www.asdk12.org/depts/assess\\_eval/AYP/State\\_AS\\_D\\_AYG\\_0708.pdf](http://www.asdk12.org/depts/assess_eval/AYP/State_AS_D_AYG_0708.pdf)

SBA Proficiency Comparison by Grade for Rogers Park Elementary School																
	Reading Percent Proficient				Writing Percent Proficient				Mathematics Percent Proficient				Science* Percent Proficient			
	04-05	05-06	06-07	07-08	04-05	05-06	06-07	07-08	04-05	05-06	06-07	07-08	04-05	05-06	06-07	07-08
All Students	89.17%	87.36%	87.03%	86.06%	88.89%	84.68%	83.57%	83.89%	86.08%	79.71%	80.91%	83.28%	N/A	N/A	N/A	55.41%
Grade 3	84.09%	87.64%	78.67%	90.12%	85.23%	83.15%	76.00%	86.25%	82.95%	79.55%	78.67%	87.50%	N/A	N/A	N/A	N/A
Grade 4	90.79%	83.91%	90.32%	78.38%	88.16%	82.56%	83.87%	81.08%	82.89%	74.42%	77.89%	78.38%	N/A	N/A	N/A	55.41%
Grade 5	93.75%	86.84%	88.00%	88.89%	90.63%	78.95%	84.85%	86.67%	90.63%	75.00%	79.00%	83.33%	N/A	N/A	N/A	N/A
Grade 6	87.91%	90.63%	89.87%	85.88%	91.21%	92.63%	88.75%	81.18%	86.96%	88.42%	88.89%	83.53%	N/A	N/A	N/A	N/A

\* 2007-08 was the first year Science was administered for grades 4, 8 and 10 on the SBA.

SBA Proficient & Not Proficient by NCLB Groups for Rogers Park Elementary School								
	Reading		Writing		Mathematics		Science**	
	Percent Proficient	Percent Not Proficient	Percent Proficient	Percent Not Proficient	Percent Proficient	Percent Not Proficient	Percent Proficient	Percent Not Proficient
All Students	86.06%	13.94%	83.89%	16.11%	83.28%	16.72%	55.41%	44.59%
AF AM	60.00%	40.00%	46.67%	53.33%	53.33%	46.67%	*	*
AKNA/AI	90% or more	10% or fewer	78.26%	21.74%	73.91%	26.09%	60% or fewer	40% or more
Asian	86.21%	13.79%	86.21%	13.79%	82.76%	17.24%	40% or more	60% or fewer
NH/OPI	25% or fewer	75% or more	25% or fewer	75% or more	25% or fewer	75% or more	*	*
White	92.39%	7.61%	91.30%	8.70%	91.30%	8.70%	68.89%	31.11%
Hispanic	65.00%	35.00%	75.00%	25.00%	60.00%	40.00%	60% or fewer	40% or more
ME	86.00%	14.00%	84.00%	16.00%	86.00%	14.00%	*	*
EDS	68.13%	31.87%	65.93%	34.07%	64.84%	35.16%	25.00%	75.00%
Non-EDS	92.89%	7.11%	90.76%	9.24%	90.34%	9.66%	66.67%	33.33%
SWD	51.52%	48.48%	54.55%	45.45%	51.52%	48.48%	25.00%	75.00%
Non-SWD	89.90%	10.10%	87.16%	12.84%	86.82%	13.18%	61.29%	38.71%
LEP	37.93%	62.07%	34.48%	65.52%	48.28%	51.72%	75% or fewer	25% or more
Not LEP	90.70%	9.30%	88.67%	11.33%	86.67%	13.33%	59.09%	40.91%
Migrant	60% or more	40% or fewer	60% or more	40% or fewer	60% or more	40% or fewer	*	*
Not Migrant	85.80%	14.20%	83.90%	16.10%	82.97%	17.03%	56.16%	43.84%
Female	91.48%	8.52%	91.48%	8.52%	85.80%	14.20%	57.89%	42.11%
Male	79.87%	20.13%	75.16%	24.84%	80.39%	19.61%	52.78%	47.22%

\* Results cannot be published without releasing personally identifiable information based upon the EED reporting protocol

\*\* 2007-08 was the first year Science was administered for grades 4, 8 and 10 on the SBA.

SBA Mean Scale Score Comparison by NCLB Groups for Rogers Park Elementary School								
	Reading		Writing		Mathematics		Science***	
	06-07	07-08	06-07	07-08	06-07	07-08	06-07	07-08
All Students	414.12	414.86	413.18	406.85	396.44	394.83	N/A	324.92
AF AM	374.93	353.20	364.60	319.07	344.13	309.60	N/A	*
AKNA/AI	359.08	377.88	361.68	341.26	348.19	339.87	N/A	250.33
Asian**	402.43*	409.10	395.62*	417.24	381.98*	409.93	N/A	317.29
NH/OPI**	N/A	284.38	N/A	273.00	N/A	278.25	N/A	*
White	432.38	443.26	433.23	437.73	416.23	420.92	N/A	361.13
Hispanic	341.06	339.85	346.50	342.75	327.00	321.05	N/A	258.17
ME	400.59	400.86	388.45	390.76	373.63	389.10	N/A	*
EDS	354.59	353.58	346.92	342.21	323.27	333.16	N/A	256.05
Non-EDS	433.73	438.20	434.67	431.57	421.30	418.41	N/A	350.43
SWD	320.06	324.85	299.55	309.45	301.60	298.52	N/A	279.50
Non-SWD	428.85	424.87	430.98	417.71	411.11	405.57	N/A	333.71
LEP	369.07	320.03	363.88	313.28	347.60	312.21	N/A	261.75
Not LEP	425.30	424.00	425.19	415.90	409.05	402.82	N/A	332.58
Migrant	366.00	363.33	345.00	357.17	317.17	353.67	N/A	*
Not Migrant	414.96	415.82	414.38	407.78	397.82	395.60	N/A	325.53
Female	425.70	430.17	430.40	428.42	398.24	398.93	N/A	334.47
Male	402.06	397.37	395.24	382.05	394.55	390.12	N/A	314.83

\* Results cannot be published without releasing personally identifiable information based upon the EED reporting protocol

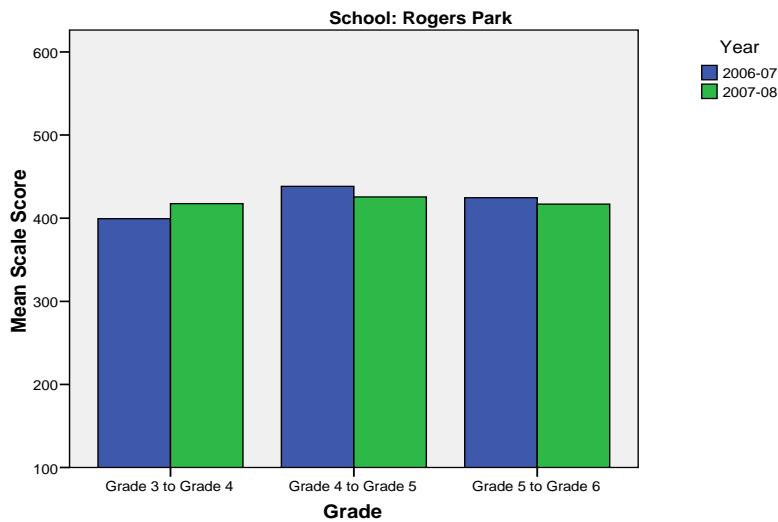
\*\* Prior to 2007-08 the Asian category includes Native Hawaiian/Other Pacific Islander. In 2007-08 Native Hawaiian/Other Pacific Islander is a separate ethnic category.

\*\*\* 2007-08 was the first year Science was administered for grades 4, 8 and 10 on the SBA.

Rogers Park Elementary School SBA Change Average Scale Score by NCLB Groups: Reading									
	Average Scale Score of Students Tested in District Both Years			Average Scale Score of Students Tested in District Both Years			Average Scale Score of Students Tested in District Both Years		
	Grade 3 in 06-07	Grade 4 in 07-08	Difference	Grade 4-in 06-07	Grade 5 in 07-08	Difference	Grade 5-in 06-07	Grade 6 in 07-08	Difference
All Students	399.34	417.46	18.12	438.33	425.60	-12.73	424.71	416.93	-7.79
AF AM	*	*	*	*	*	*	*	*	*
AKNA/AI	331.00	351.20	20.20	*	*	*	*	*	*
Asian	413.60	415.20	1.60	469.11	446.89	-22.22	411.00	390.78	-20.22
NH/OPI	*	*	*	*	*	*	*	*	*
White	421.67	441.40	19.72	462.73	445.84	-16.89	441.49	438.86	-2.63
Hispanic	327.67	340.50	12.83	406.60	390.20	-16.40	361.80	319.00	-42.80
ME	*	*	*	420.25	427.94	7.69	403.88	394.88	-9.00
EDS	331.27	338.40	7.13	400.52	380.00	-20.52	364.14	340.14	-24.00
Non-EDS	419.76	441.18	21.42	454.08	444.60	-9.48	437.56	433.21	-4.35
SWD	297.17	313.42	16.25	340.14	335.14	-5.00	321.44	305.78	-15.67
Non-SWD	422.47	441.02	18.55	447.14	433.72	-13.42	437.80	431.01	-6.79
LEP	*	*	*	*	*	*	*	*	*
Not LEP	403.89	422.33	18.44	440.90	426.93	-13.98	429.04	422.18	-6.86
Migrant	*	*	*	*	*	*	*	*	*
Not Migrant	400.02	418.05	18.03	440.00	427.73	-12.27	424.71	416.93	-7.79
Female	417.86	436.57	18.71	443.21	436.66	-6.55	443.57	436.31	-7.26
Male	377.73	395.17	17.43	432.29	411.92	-20.37	403.87	395.50	-8.37

\* Results cannot be published without releasing personally identifiable information based upon the EED reporting protocol

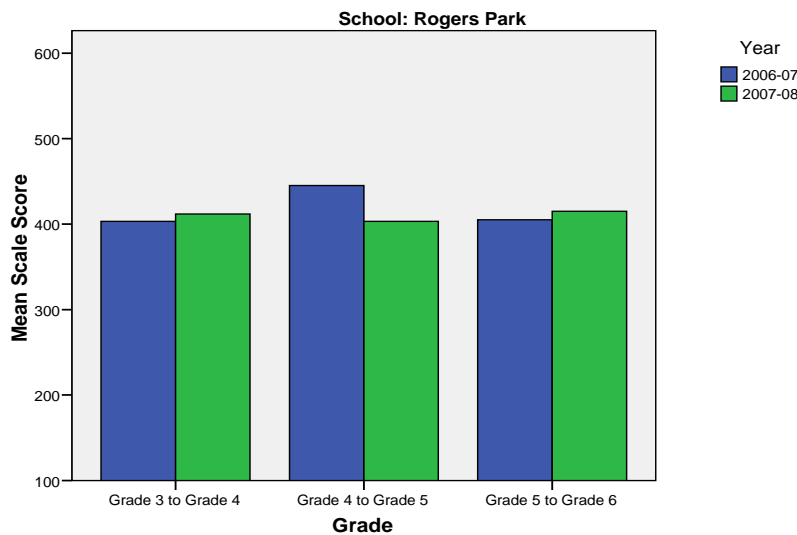
**Change in Mean Scale Score in SBA Reading by Grade Between 2006-07 and 2007-08**



Rogers Park Elementary School SBA Change Average Scale Score by NCLB Groups: Writing									
	Average Scale Score of Students Tested in District Both Years			Average Scale Score of Students Tested in District Both Years			Average Scale Score of Students Tested in District Both Years		
	Grade 3 in 06-07	Grade 4 in 07-08	Difference	Grade 4- in 06-07	Grade 5 in 07-08	Difference	Grade 5- in 06-07	Grade 6 in 07-08	Difference
All Students	403.28	411.89	8.62	445.07	403.09	-41.98	405.00	415.04	10.04
AF AM	*	*	*	*	*	*	*	*	*
AKNA/AI	332.60	325.80	-6.80	*	*	*	*	*	*
Asian	434.00	433.60	-0.40	476.67	452.00	-24.67	390.33	402.78	12.44
NH/OPI	*	*	*	*	*	*	*	*	*
White	427.67	434.67	7.00	479.24	422.78	-56.47	422.35	437.98	15.63
Hispanic	304.17	344.17	40.00	420.00	393.40	-26.60	343.20	338.60	-4.60
ME	*	*	*	429.94	396.13	-33.81	371.00	393.88	22.88
EDS	337.20	344.87	7.67	388.72	349.84	-38.88	342.07	333.50	-8.57
Non-EDS	423.10	432.00	8.90	468.55	425.28	-43.27	418.35	432.33	13.98
SWD	282.25	296.08	13.83	300.71	312.43	11.71	314.22	298.33	-15.89
Non-SWD	430.68	438.11	7.43	458.03	411.23	-46.79	416.51	429.83	13.32
LEP	*	*	*	*	*	*	*	*	*
Not LEP	408.97	416.52	7.56	448.90	405.02	-43.88	411.97	421.12	9.14
Migrant	*	*	*	*	*	*	*	*	*
Not Migrant	404.20	412.78	8.58	446.83	404.07	-42.76	405.00	415.04	10.04
Female	429.09	444.06	14.97	456.06	415.98	-40.09	427.76	440.14	12.38
Male	373.17	374.37	1.20	431.47	387.16	-44.32	379.84	387.29	7.45

\* Results cannot be published without releasing personally identifiable information based upon the EED reporting protocol

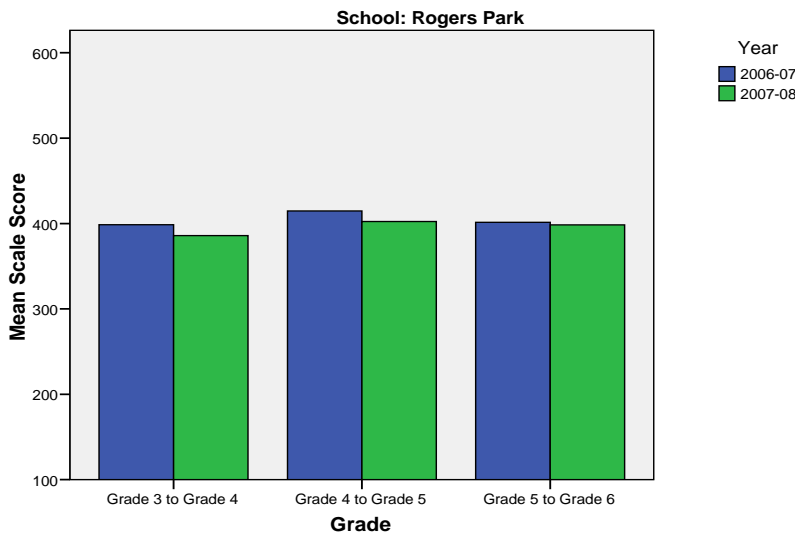
**Change in Mean Scale Score in SBA Writing by Grade between 2006-07 and 2007-08**



Rogers Park Elementary School SBA Change Average Scale Score by NCLB Groups: Mathematics									
	Average Scale Score of Students Tested in District Both Years			Average Scale Score of Students Tested in District Both Years			Average Scale Score of Students Tested in District Both Years		
	Grade 3 in 06-07	Grade 4 in 07-08	Difference	Grade 4- in 06-07	Grade 5 in 07-08	Difference	Grade 5- in 06-07	Grade 6 in 07-08	Difference
All Students	398.52	385.86	-12.65	414.71	402.31	-12.40	401.40	398.39	-3.01
AF AM	*	*	*	279.00	296.40	17.40	*	*	*
AKNA/AI	329.00	326.20	-2.80	*	*	*	*	*	*
Asian	425.80	425.80	0.00	450.78	418.00	-32.78	401.22	426.56	25.33
NH/OPI	*	*	*	*	*	*	*	*	*
White	417.27	402.91	-14.36	454.60	433.20	-21.40	415.59	410.59	-5.00
Hispanic	315.83	298.67	-17.17	338.80	353.40	14.60	350.80	341.60	-9.20
ME	*	*	*	407.65	401.24	-6.41	372.75	373.75	1.00
EDS	316.67	305.53	-11.13	343.85	345.78	1.93	334.71	333.21	-1.50
Non-EDS	422.59	409.49	-13.10	446.60	427.75	-18.85	415.55	412.21	-3.33
SWD	300.08	294.83	-5.25	295.43	303.57	8.14	307.78	290.67	-17.11
Non-SWD	420.39	406.09	-14.30	425.15	410.95	-14.20	413.27	412.04	-1.23
LEP	*	*	*	309.60	355.00	45.40	*	*	*
Not LEP	402.87	389.42	-13.45	421.12	405.20	-15.93	405.50	403.47	-2.03
Migrant	*	*	*	*	*	*	*	*	*
Not Migrant	400.14	386.14	-14.00	417.01	403.94	-13.07	401.40	398.39	-3.01
Female	412.03	390.17	-21.86	413.63	400.71	-12.92	405.48	402.48	-3.00
Male	382.30	380.70	-1.60	416.11	404.37	-11.74	396.89	393.87	-3.03

\* Results cannot be published without releasing personally identifiable information based upon the EED reporting protocol

**Change in Mean Scale Score in SBA Mathematics by Grade between 2006-07 and 2007-08**



Reading: SBA Results Compared for Rogers Park Elementary School, District and State Grades 3 Through 6															
	% Advanced Proficient			% Proficient			% Below Proficient			% Far Below Proficient			% Tested		
	School	District	State	School	District	State	School	District	State	School	District	State	School	District	State
All Students	56.67%	39.70%	35.67%	29.39%	43.89%	45.50%	10.00%	11.60%	13.02%	3.94%	4.80%	5.80%	98.80%	98.15%	97.98%
AF AM	26.67%	20.73%	22.99%	33.33%	54.18%	53.49%	*	17.79%	16.46%	*	7.30%	7.06%	100.00%	98.04%	97.49%
AKNA/AI	29.17%	20.23%	14.62%	62.50%	51.11%	48.17%	*	18.54%	24.83%	*	10.11%	12.37%	100.00%	96.88%	97.59%
Asian	68.97%	30.22%	28.26%	17.24%	48.71%	51.04%	*	15.32%	15.32%	*	5.75%	5.38%	93.55%	97.64%	97.67%
NH/OPI	*	14.67%	N/A	*	51.03%	N/A	62.50%	24.59%	N/A	*	9.71%	N/A	100.00%	98.98%	N/A
White	70.65%	52.75%	47.28%	21.74%	38.06%	42.41%	4.89%	6.69%	7.27%	2.72%	2.50%	3.03%	99.46%	98.68%	98.28%
Hispanic	15.00%	32.35%	31.74%	50.00%	46.43%	48.60%	*	14.67%	13.66%	*	6.55%	6.00%	100.00%	97.14%	97.32%
ME	46.00%	33.26%	34.76%	40.00%	48.25%	47.75%	*	13.47%	12.80%	*	5.01%	4.70%	98.04%	98.15%	98.03%
EDS	25.27%	22.85%	21.47%	42.86%	49.71%	48.65%	23.08%	19.04%	20.31%	8.79%	8.40%	9.57%	97.85%	97.50%	96.44%
Not EDS	68.62%	51.44%	46.31%	24.27%	39.84%	43.15%	5.02%	6.42%	7.56%	2.09%	2.30%	2.98%	99.17%	98.61%	99.16%
SWD	15.15%	10.08%	9.29%	36.36%	37.10%	37.96%	30.30%	32.15%	31.20%	18.18%	20.67%	21.55%	97.06%	94.28%	93.60%
Non-SWD	61.28%	45.02%	40.09%	28.62%	45.12%	46.77%	7.74%	7.91%	9.98%	2.36%	1.95%	3.17%	99.00%	98.88%	98.75%
LEP	13.79%	4.97%	3.12%	24.14%	39.93%	38.06%	44.83%	37.14%	38.40%	17.24%	17.96%	20.42%	93.55%	94.25%	96.11%
Not LEP	60.80%	42.78%	39.95%	29.90%	44.25%	46.48%	6.64%	9.33%	9.68%	2.66%	3.64%	3.88%	99.34%	98.51%	98.23%
Migrant	*	27.01%	17.29%	83.33%	50.34%	48.58%	*	16.44%	23.78%	*	6.21%	10.35%	100.00%	98.35%	98.50%
Not Migrant	57.41%	40.26%	36.97%	28.40%	43.61%	45.29%	10.19%	11.38%	12.26%	4.01%	4.74%	5.48%	98.78%	98.14%	97.94%
Female	61.93%	44.40%	39.45%	29.55%	43.41%	45.33%	6.25%	8.75%	10.85%	2.27%	3.44%	4.37%	98.32%	98.39%	98.31%
Male	50.65%	35.15%	32.09%	29.22%	44.37%	45.67%	14.29%	14.36%	15.08%	5.84%	6.13%	7.16%	99.35%	97.92%	97.66%

\* Results cannot be published without releasing personally identifiable information based upon the EED reporting protocol

Writing: SBA Results Compared for Rogers Park Elementary School, District and State Grades 3 Through 6															
	% Advanced Proficient			% Proficient			% Below Proficient			% Far Below Proficient			% Tested		
	School	District	State	School	District	State	School	District	State	School	District	State	School	District	State
All Students	51.67%	34.87%	30.49%	32.22%	44.25%	44.50%	13.98%	18.78%	22.32%	2.13%	2.10%	2.69%	98.50%	98.11%	97.96%
AF AM	*	20.71%	20.51%	40.00%	46.71%	48.68%	53.33%	28.71%	27.18%	*	3.88%	3.63%	100.00%	98.15%	97.71%
AKNA/AI	21.74%	17.15%	12.11%	56.52%	45.31%	41.05%	*	33.38%	40.69%	*	4.15%	6.15%	95.83%	96.51%	97.64%
Asian	55.17%	30.17%	28.49%	31.03%	45.92%	45.93%	*	21.33%	23.31%	*	2.58%	2.27%	93.55%	97.56%	97.67%
NH/OPI	*	14.02%	N/A	*	42.89%	N/A	75.00%	39.38%	N/A	*	3.71%	N/A	100.00%	99.18%	N/A
White	67.39%	45.85%	40.04%	23.91%	41.91%	44.71%	7.07%	11.26%	13.97%	1.63%	0.99%	1.28%	99.46%	98.66%	98.22%
Hispanic	*	27.33%	27.00%	65.00%	47.25%	48.36%	20.00%	22.54%	22.23%	*	2.88%	2.41%	100.00%	97.07%	97.36%
ME	44.00%	28.51%	29.14%	40.00%	47.68%	47.29%	*	21.31%	21.37%	*	2.51%	2.20%	98.04%	98.15%	97.96%
EDS	21.98%	18.92%	17.53%	43.96%	47.34%	45.15%	29.67%	29.95%	32.95%	4.40%	3.79%	4.37%	97.85%	97.50%	96.53%
Not EDS	63.03%	45.99%	40.21%	27.73%	42.10%	44.01%	7.98%	10.99%	14.35%	1.26%	0.92%	1.44%	98.76%	98.54%	99.06%
SWD	9.09%	7.09%	6.94%	45.45%	38.82%	37.02%	*	45.96%	47.34%	*	8.12%	8.69%	97.06%	94.28%	93.97%
Non-SWD	56.42%	39.86%	34.45%	30.74%	45.23%	45.76%	10.81%	13.89%	18.11%	2.03%	1.02%	1.69%	98.67%	98.83%	98.66%
LEP	13.79%	4.71%	3.14%	20.69%	37.05%	30.66%	55.17%	50.57%	56.76%	10.34%	7.67%	9.44%	93.55%	94.25%	96.18%
Not LEP	55.33%	37.55%	34.08%	33.33%	44.89%	46.32%	10.00%	15.96%	17.79%	1.33%	1.60%	1.81%	99.01%	98.47%	98.20%
Migrant	*	21.44%	14.20%	66.67%	48.58%	42.55%	*	26.63%	38.57%	*	3.35%	4.68%	100.00%	98.51%	98.58%
Not Migrant	52.32%	35.46%	31.63%	31.58%	44.06%	44.64%	13.93%	18.43%	21.18%	2.17%	2.04%	2.55%	98.48%	98.09%	97.92%
Female	57.95%	42.63%	37.48%	33.52%	42.50%	43.42%	*	13.62%	17.40%	*	1.26%	1.70%	98.32%	98.32%	98.22%
Male	44.44%	27.36%	23.87%	30.72%	45.96%	45.52%	21.57%	23.78%	26.98%	3.27%	2.91%	3.63%	98.71%	97.90%	97.72%

\* Results cannot be published without releasing personally identifiable information based upon the EED reporting protocol

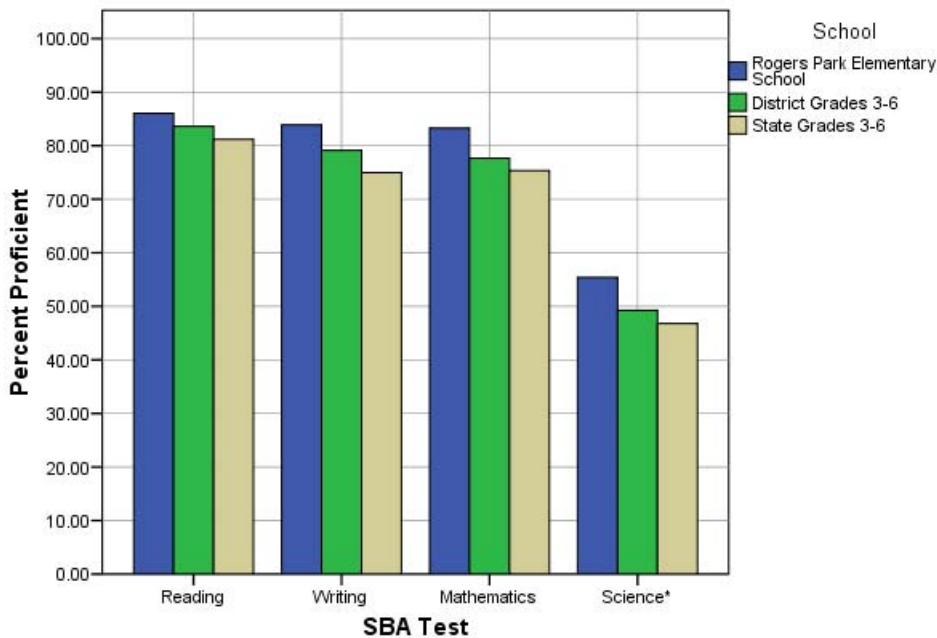
Mathematics: SBA Results Compared for Rogers Park Elementary School, District and State Grades 3 Through 6															
	% Advanced Proficient			% Proficient			% Below Proficient			% Far Below Proficient			% Tested		
	School	District	State	School	District	State	School	District	State	School	District	State	School	District	State
All Students	54.41%	39.81%	36.08%	28.88%	37.84%	39.26%	8.51%	12.46%	13.78%	8.21%	9.88%	10.88%	98.50%	98.52%	98.12%
AF AM	*	19.48%	22.09%	*	40.14%	41.60%	26.67%	20.19%	18.61%	20.00%	20.19%	17.70%	100.00%	98.38%	97.78%
AKNA/AI	17.39%	23.20%	18.26%	56.52%	39.51%	39.14%	*	19.22%	21.79%	*	18.07%	20.81%	95.83%	96.96%	97.72%
Asian	62.07%	37.02%	34.29%	20.69%	41.20%	41.23%	*	13.76%	14.10%	*	8.03%	10.38%	93.55%	99.27%	98.99%
NH/OPI	*	18.52%	N/A	*	38.07%	N/A	37.50%	20.16%	N/A	37.50%	23.25%	N/A	100.00%	99.39%	N/A
White	70.65%	51.12%	45.75%	20.65%	35.15%	38.35%	3.26%	8.41%	9.81%	5.43%	5.32%	6.09%	99.46%	98.69%	98.17%
Hispanic	*	31.85%	31.11%	*	40.04%	42.19%	20.00%	15.02%	15.10%	20.00%	13.09%	11.60%	100.00%	98.66%	98.47%
ME	46.00%	33.75%	35.45%	40.00%	41.21%	40.61%	8.00%	13.93%	13.30%	6.00%	11.11%	10.64%	98.04%	98.26%	98.00%
EDS	21.98%	24.26%	23.31%	42.86%	41.50%	40.98%	18.68%	17.54%	18.60%	16.48%	16.70%	17.11%	97.85%	98.14%	96.77%
Not EDS	66.81%	50.70%	45.67%	23.53%	35.28%	37.96%	4.62%	8.91%	10.16%	5.04%	5.12%	6.21%	98.76%	98.79%	99.16%
SWD	18.18%	12.52%	12.06%	33.33%	31.53%	32.14%	9.09%	23.68%	23.60%	39.39%	32.27%	32.20%	97.06%	94.19%	93.99%
Non-SWD	58.45%	44.69%	40.12%	28.38%	38.97%	40.45%	8.45%	10.46%	12.13%	4.73%	5.88%	7.30%	98.67%	99.34%	98.85%
LEP	10.34%	8.22%	6.05%	37.93%	36.74%	34.10%	24.14%	24.50%	27.43%	27.59%	30.54%	32.42%	93.55%	97.95%	97.56%
Not LEP	58.67%	42.73%	40.09%	28.00%	37.94%	39.95%	7.00%	11.35%	11.96%	6.33%	7.98%	8.01%	99.01%	98.57%	98.19%
Migrant	*	30.94%	22.37%	83.33%	43.65%	40.27%	*	14.21%	20.36%	*	11.20%	17.00%	100.00%	98.68%	98.54%
Not Migrant	55.11%	40.21%	37.05%	27.86%	37.58%	39.19%	8.67%	12.38%	13.31%	8.36%	9.83%	10.45%	98.48%	98.51%	98.09%
Female	56.82%	41.01%	36.83%	28.98%	38.32%	39.88%	7.39%	11.59%	13.34%	6.82%	9.09%	9.96%	98.32%	98.71%	98.31%
Male	51.63%	38.66%	35.38%	28.76%	37.38%	38.67%	9.80%	13.30%	14.20%	9.80%	10.66%	11.75%	98.71%	98.34%	97.94%

\* Results cannot be published without releasing personally identifiable information based upon the EED reporting protocol

Science: SBA Results Compared for Rogers Park Elementary School, District and State Grade 4															
	% Advanced Proficient			% Proficient			% Below Proficient			% Far Below Proficient			% Tested		
	School	District	State	School	District	State	School	District	State	School	District	State	School	District	State
All Students	37.84%	23.68%	22.1%	17.57%	25.57%	24.7%	21.62%	31.70%	31.3%	22.97%	19.06%	21.9%	97.37%	97.81%	95.35%
AF AM	*	9.18%	8.9%	*	18.84%	23.3%	*	39.13%	38.0%	*	32.85%	29.8%	100.00%	98.57%	94.49%
AKNA/AI	*	6.54%	6.8%	*	21.50%	14.2%	*	42.99%	35.2%	50.00%	28.97%	43.8%	100.00%	96.40%	94.98%
Asian	*	10.18%	13.4%	57.14%	21.40%	19.4%	*	39.30%	37.5%	*	29.12%	29.7%	87.50%	98.28%	97.39%
NH/OPI	*	6.57%	N/A	*	8.03%	N/A	*	34.31%	N/A	*	51.09%	N/A	100.00%	98.56%	N/A
White	57.78%	36.40%	32.3%	11.11%	29.08%	29.9%	20.00%	25.33%	27.3%	11.11%	9.19%	10.5%	100.00%	97.87%	94.97%
Hispanic	*	16.17%	18.2%	*	26.15%	26.0%	*	32.08%	33.9%	50.00%	25.61%	21.9%	100.00%	97.12%	96.39%
ME	*	16.06%	18.5%	*	26.12%	26.8%	*	37.47%	35.9%	*	20.34%	18.7%	75.00%	98.32%	96.90%
EDS	*	8.34%	11.0%	*	22.44%	20.1%	30.00%	38.10%	34.7%	45.00%	31.12%	34.2%	95.24%	97.73%	94.99%
Not EDS	50.00%	35.00%	31.2%	16.67%	27.88%	28.5%	18.52%	26.97%	28.5%	14.81%	10.15%	11.9%	98.18%	97.87%	95.64%
SWD	*	8.38%	7.7%	*	16.38%	15.2%	25.00%	36.57%	36.6%	50.00%	38.67%	40.5%	92.31%	93.25%	91.70%
Non-SWD	41.94%	26.43%	24.7%	19.35%	27.22%	26.4%	20.97%	30.82%	30.4%	17.74%	15.53%	18.5%	98.41%	98.68%	96.04%
LEP	*	2.00%	1.5%	*	5.14%	3.8%	*	34.00%	28.3%	75.00%	58.86%	66.5%	88.89%	96.15%	95.67%
Not LEP	40.91%	26.13%	25.2%	18.18%	27.88%	27.9%	24.24%	31.44%	31.8%	16.67%	14.55%	15.1%	98.51%	98.00%	95.30%
Migrant	*	9.70%	9.0%	*	26.87%	15.3%	*	39.55%	34.3%	*	23.88%	41.4%	100.00%	97.10%	97.32%
Not Migrant	38.36%	24.24%	23.0%	17.81%	25.51%	25.3%	20.55%	31.38%	31.1%	23.29%	18.86%	20.5%	97.33%	97.84%	95.21%
Female	42.11%	22.73%	20.8%	15.79%	25.78%	25.2%	23.68%	33.63%	32.6%	18.42%	17.87%	21.4%	95.00%	98.05%	95.43%
Male	33.33%	24.61%	23.4%	19.44%	25.36%	24.2%	19.44%	29.80%	30.1%	27.78%	20.23%	22.3%	100.00%	97.58%	95.27%

\* Results cannot be published without releasing personally identifiable information based upon the EED reporting protocol

**2007-08 SBA Results Compared for Rogers Park Elementary School, District and State**

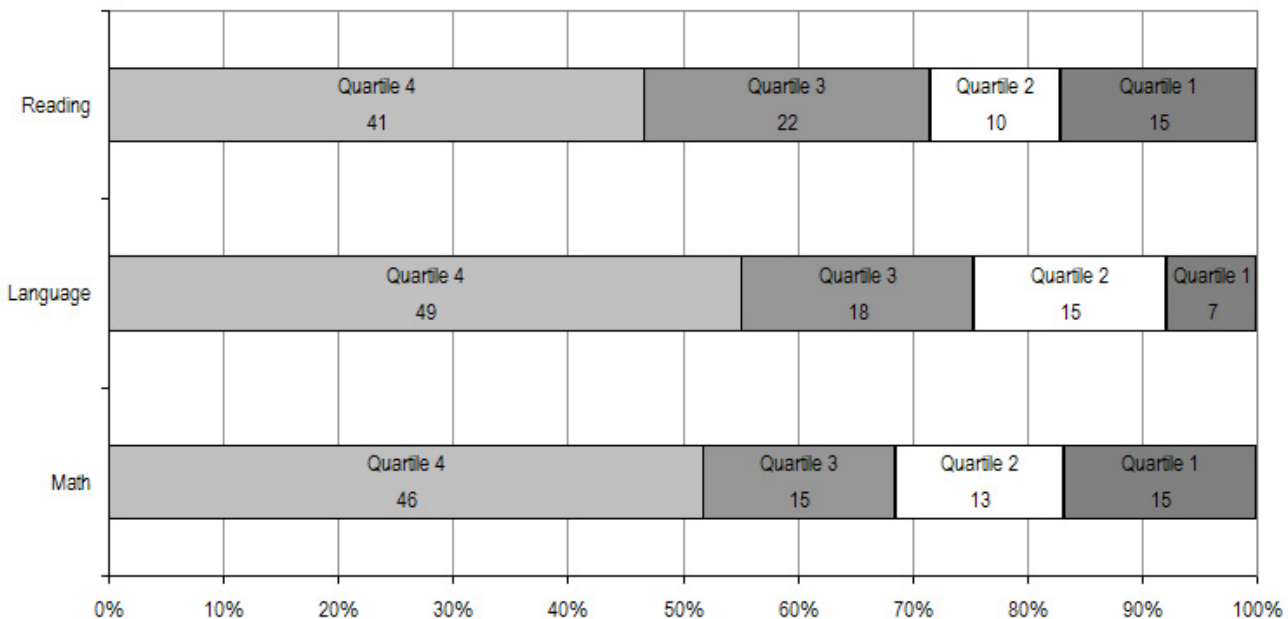


\* 2007-08 was the first year Science was administered for grades 4, 8 and 10 on the SBA.

Rogers Park Elementary School TerraNova Grade 5 Percent in Each Quartile								
Reading	Above Average		Average				Below Average	
	4th Quartile (76-99 percentile)		3rd Quartile (51-75 percentile)		2nd Quartile (26-50 percentile)		1st Quartile (1-25 percentile)	
	School	District	School	District	School	District	School	District
07-08	46.59%	25.65%	25.00%	24.08%	11.36%	23.73%	17.05%	26.55%
06-07	51.0%	33.1%	23.5%	26.1%	12.7%	23.6%	12.7%	17.2%
05-06	45.3%	30.4%	28.0%	26.8%	18.7%	24.5%	8.0%	18.3%
04-05	46.9%	29.2%	30.6%	27.6%	15.3%	24.5%	7.1%	18.7%
03-04	60.9%	30.6%	17.2%	26.9%	12.6%	24.2%	9.2%	18.3%
<b>Language</b>								
07-08	55.06%	26.79%	20.22%	27.20%	16.85%	24.12%	7.87%	21.89%
06-07	57.8%	34.7%	13.7%	26.9%	15.7%	21.4%	12.7%	17.0%
05-06	57.3%	34.0%	18.7%	26.5%	13.3%	22.0%	10.7%	17.5%
04-05	56.1%	32.1%	31.6%	28.3%	5.1%	21.2%	7.1%	18.4%
03-04	63.2%	34.1%	13.8%	26.5%	9.2%	21.7%	13.8%	17.7%
<b>Mathematics</b>								
07-08	51.69%	25.45%	16.85%	26.40%	14.61%	24.47%	16.85%	23.68%
06-07	49.0%	29.7%	26.5%	31.6%	10.8%	21.2%	13.7%	17.4%
05-06	52.0%	28.4%	24.0%	31.9%	10.7%	22.3%	13.3%	17.5%
04-05	54.1%	26.9%	24.5%	31.1%	15.3%	22.9%	6.1%	19.1%
03-04	63.2%	28.3%	10.3%	29.3%	13.8%	22.6%	12.6%	19.8%

The double bold line indicates a change from the TerraNova 2<sup>nd</sup> edition to the TerraNova 3<sup>rd</sup> edition.

2007-08 TerraNova 3rd Edition Grade 5 Percent and Count of Students in Each Quartile For Rogers Park Elementary School



**Climate Survey Results for Rogers Park Elementary School**

The Anchorage School District administered the School Climate and Connectedness Surveys in spring 2008 to students in grades 5-12, all school staff and parents/guardians of students in grades K-12. The surveys were done to provide schools with information about perceptions and experiences related to school climate for use in setting school goals and redirecting resources. In the spring of 2008 grades 3 and 4 students were involved in a pilot survey for measuring school climate and connectedness. The results are currently under review by the American Institutes for Research.

Respondents were asked to answer a series of questions that were related to a certain concept. For each item, there were five options from which to choose a response. The answer options ranged from strongly disagree (1) to strongly agree (5).

Student Survey Response Rate Grades 5-12			
	Rogers Park Elementary School	Overall Elementary Schools	District**
# Surveys Completed	166	5,579	21,629
# Reportable Surveys	151	4,969	18,654
# Students Enrolled*	177	6,331	28,945
Reportable Response Rate	85.31%	78.49%	64.45%

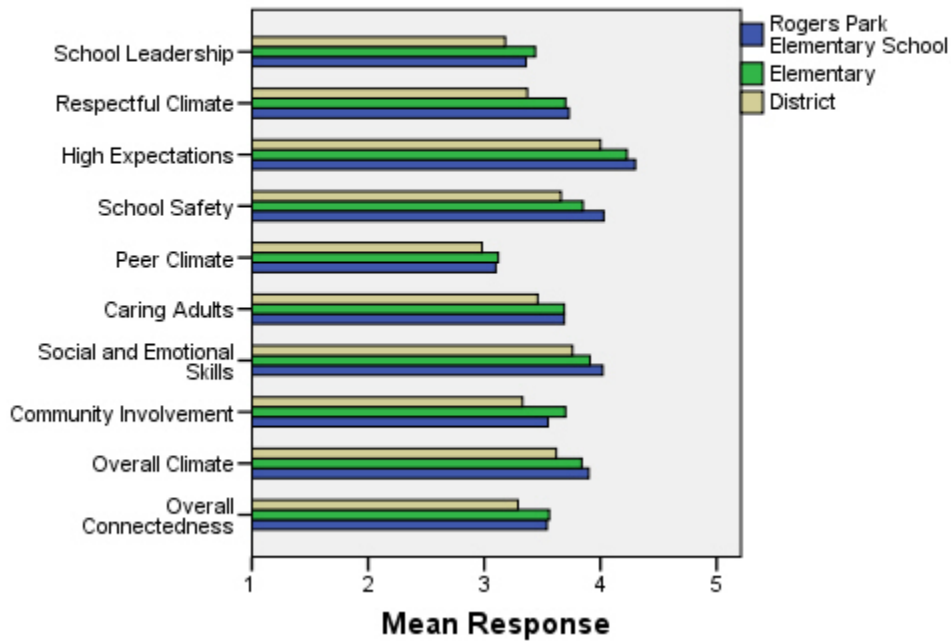
\*Number enrolled as of April 1, 2008

\*\*District data does not include KCC responses

Each question in the survey related to a factor or concept, and a score was calculated based on the mean response for the questions related to each factor. The factors measured in the survey were:

- **School Leadership and Student Involvement:** This factor reflects students' feelings about the decision making of school leaders as well as student participation in the school governance. Students selected responses between 1 and 5 where 1 indicates a low level of school leadership and student involvement and 5 indicates a high level of school leadership and student involvement.
- **Respectful Climate:** This factor reflects students' feelings about fairness of rules and respect for students' contributions. Students selected responses between 1 and 5 where 1 indicates a lack of a respectful climate and 5 indicates a highly respectful climate for students.
- **High Expectations:** This factor reflects students' feelings about their own expectations as well as those of adults in their school and community. Students selected responses between 1 and 5 where 1 indicates a lack of high expectations and 5 indicates a high level of high expectations.
- **School Safety:** This factor reflects students' feelings about bullies and gangs at school as well as general crime and violence in the community. Students selected responses between 1 and 5 where 1 indicates a low level of school safety and 5 indicates a high level of school safety.
- **Peer Climate:** This factor reflects students' feelings about how respectful students are to one another and how helpful students are to other students. Students selected responses between 1 and 5 where 1 indicates a more negative peer climate and 5 indicates a very positive peer climate at the school.
- **Caring Adults:** This factor reflects students' feelings about how close they feel to adults in the school. Students selected responses between 1 and 5 where 1 indicates a lack of caring adult relationships and 5 indicates strong caring adult relationships at the school.
- **Social and Emotional Learning:** This factor reflects students' ability to think about the consequences of their actions and to empathize with others. Students selected responses between 1 and 5 where 1 indicates that students at the school perceive themselves as having poorer social and emotional learning, and 5 indicates higher levels of social and emotional learning.
- **Community Involvement:** This factor reflects students' feelings about how supportive and welcoming the school is with parents and the community. Students selected responses between 1 and 5 where 1 indicates a less supportive and welcoming environment and 5 indicates a more supportive and welcoming environment.
- **Overall Climate:** The overall climate score was computed as the mean of three scales: school leadership, high expectations and school safety.
- **Overall Connectedness:** Overall connectedness score was computed as a mean of four scales: respectful climate, peer climate, caring adults and community involvement.

### Climate and Connectedness Student Survey - Rogers Park



Student Survey Mean Response by Factors Related to School Climate - Overall District			
	Rogers Park Elementary School	Overall Elementary Schools	District
School Leadership	3.36	3.44	3.18
Respectful Climate	3.73	3.70	3.37
High Expectations	4.30	4.23	4.00
School Safety	4.03	3.85	3.66
Peer Climate	3.10	3.12	2.98
Caring Adults	3.69	3.69	3.46
Social and Emotional Skills	4.02	3.91	3.76
Community Involvement	3.55	3.70	3.33
Overall Climate	3.90	3.84	3.62
Overall Connectedness	3.54	3.56	3.29

Range is from a low of 1 to a high of 5

Students were also asked to answer questions related to school danger. The following table provides the responses for those questions:

Student Survey Results of the School Danger Questions - Percent of Students Responding in Each Category					
	0 Times	1-2 Times	3-6 Times	7-12 Times	> 12 Times
<b>Rogers Park Elementary School</b>					
Under the influence of drugs?	98.00%	1.33%	0.00%	0.00%	0.67%
Under the influence of alcohol?	94.63%	3.36%	1.34%	0.00%	0.67%
Destroy things (vandalism)?	44.22%	37.41%	10.20%	4.76%	3.40%
Get into fights?	16.67%	47.33%	24.67%	6.00%	5.33%
Steal things?	48.67%	32.67%	8.67%	5.33%	4.67%
Threaten or bully?	29.05%	31.76%	21.62%	7.43%	10.14%
Under the influence of inhalants?	79.33%	14.00%	4.67%	0.67%	1.33%
Carry weapons?	85.23%	12.08%	2.68%	0.00%	0.00%
<b>Overall Elementary Schools</b>					
Under the influence of drugs?	91.87%	5.65%	1.22%	0.31%	0.96%
Under the influence of alcohol?	91.42%	6.01%	1.16%	0.51%	0.90%
Destroy things (vandalism)?	46.82%	32.08%	12.45%	3.30%	5.36%
Get into fights?	22.32%	35.75%	22.56%	7.96%	11.41%
Steal things?	49.79%	27.92%	12.01%	4.33%	5.95%
Threaten or bully?	32.34%	28.83%	17.08%	7.78%	13.97%
Under the influence of inhalants?	71.03%	17.07%	6.14%	2.63%	3.12%
Carry weapons?	79.22%	15.35%	3.17%	0.59%	1.68%
<b>District</b>					
Under the influence of drugs?	60.45%	15.05%	9.54%	3.92%	11.04%
Under the influence of alcohol?	63.11%	16.37%	8.90%	4.43%	7.19%
Destroy things (vandalism)?	41.26%	29.47%	15.45%	5.88%	7.94%
Get into fights?	26.40%	35.20%	21.96%	7.11%	9.33%
Steal things?	44.80%	25.68%	13.81%	6.98%	8.74%
Threaten or bully?	32.21%	26.21%	16.68%	9.27%	15.63%
Under the influence of inhalants?	72.79%	14.21%	5.66%	2.48%	4.87%
Carry weapons?	69.45%	19.15%	5.34%	2.01%	4.06%

Student Survey Results of the Mean Factor Score by Ethnicity (Self-Reported)							
	AKNA/AI	AF AM/Black	Hispanic	Asian/NH	White	Other	Multi-Ethnic
<b>Rogers Park Elementary School</b>							
School Leadership	3.42	3.53	4.20	3.28	3.38	3.24	3.27
Respectful Climate	3.69	3.56	4.67	3.77	3.78	3.56	3.65
High Expectations	4.33	4.25	4.71	4.23	4.33	4.21	4.29
School Safety	3.72	3.64	2.60	4.19	4.11	3.97	4.06
Peer Climate	2.85	2.70	3.60	3.21	3.12	3.12	3.23
Caring Adults	3.82	3.42	4.00	3.59	3.81	3.42	3.58
Social and Emotional Skills	3.96	3.83	3.87	3.98	4.07	4.01	3.97
Community Involvement	3.52	3.41	3.14	3.58	3.62	3.24	3.64
Overall Climate	3.82	3.80	3.84	3.89	3.95	3.84	3.85
Overall Connectedness	3.51	3.35	3.85	3.51	3.63	3.32	3.50
<b>Overall Elementary Schools</b>							
School Leadership	3.56	3.50	3.52	3.55	3.37	3.44	3.42
Respectful Climate	3.75	3.60	3.66	3.72	3.71	3.69	3.63
High Expectations	4.12	4.23	4.23	4.22	4.26	4.19	4.25
School Safety	3.75	3.63	3.73	3.68	4.03	3.66	3.79
Peer Climate	3.12	2.94	3.12	3.18	3.16	3.05	3.05
Caring Adults	3.64	3.73	3.64	3.59	3.74	3.60	3.76
Social and Emotional Skills	3.86	3.84	3.91	3.95	3.93	3.90	3.89
Community Involvement	3.66	3.60	3.67	3.66	3.75	3.66	3.70
Overall Climate	3.81	3.79	3.84	3.81	3.89	3.76	3.82
Overall Connectedness	3.56	3.49	3.51	3.53	3.60	3.49	3.56
<b>District</b>							
School Leadership	3.33	3.14	3.19	3.28	3.14	3.17	3.15
Respectful Climate	3.48	3.18	3.32	3.39	3.39	3.37	3.33
High Expectations	3.98	3.94	3.96	4.02	4.02	4.00	4.01
School Safety	3.60	3.48	3.55	3.47	3.78	3.51	3.62
Peer Climate	3.01	2.85	2.94	3.05	3.00	2.92	2.93
Caring Adults	3.49	3.43	3.37	3.33	3.51	3.42	3.46
Social and Emotional Skills	3.73	3.66	3.73	3.81	3.78	3.75	3.74
Community Involvement	3.37	3.22	3.31	3.29	3.34	3.34	3.31
Overall Climate	3.64	3.52	3.57	3.59	3.65	3.56	3.60
Overall Connectedness	3.33	3.17	3.24	3.26	3.31	3.26	3.27

The response rate is not high enough to provide statistically reliable results for Rogers Park Elementary School's Staff Survey Results.

Parent/Guardian Survey Response Rate			
	Rogers Park Elementary School	Overall Elementary Schools	District**
# Surveys Completed	90	3,933	7,415
# Primary Guardians*	539	23,668	48,693
Response Rate	16.70%	16.62%	15.23%

\*Number students enrolled as of April 1, 2008 without dual guardians included

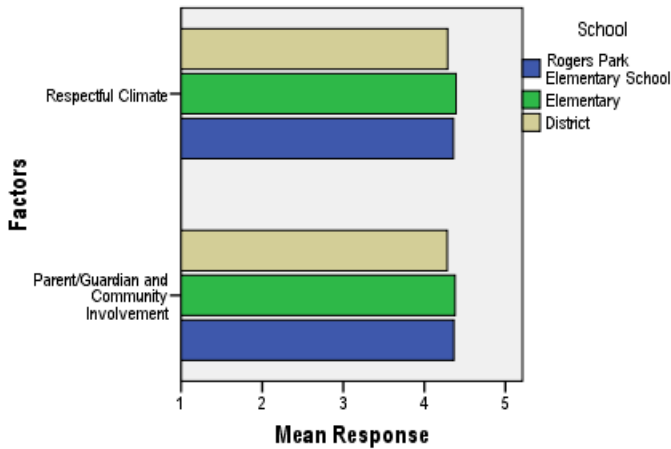
\*\*District data

- 1) does not include KCC responses;
- 2) does include responses without a school designation

Two factors are calculated from the Parent/Guardian Survey. All results other than the factor scores below are reported by individual question: questions in the graphs are condensed phrases from the full question, while questions in the tables are the full question.

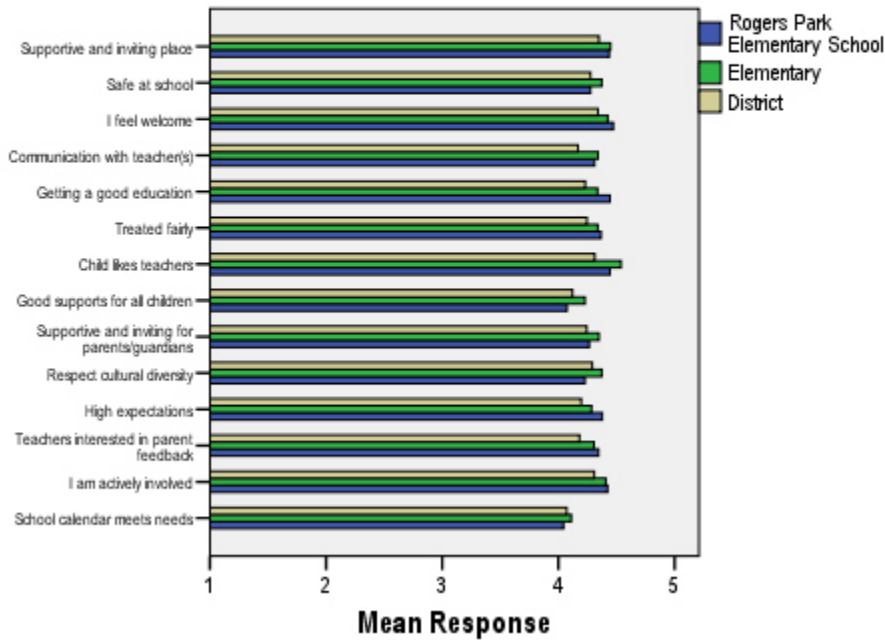
- **Respectful Climate:** This factor is calculated by determining the mean of five questions: 1) My child’s school is a supportive and inviting place, 2) I feel welcome at this school, 3) I am satisfied with communication with my child’s teacher(s), 4) This school is a supportive and inviting place for parents/guardians and 5) Adults at this school respect cultural diversity.
- **Parent/Guardian and Community Involvement:** This factor is calculated by determining the mean of five questions: 1) I feel welcome at this school, 2) This school is a supportive and inviting place for parents/guardians, 3) Adults at this school respect cultural diversity, 4) Teacher’s at my child’s school are interested in what I have to say and 5) I feel like I am actively involved in my child’s education.

**Parent/Guardian Survey Mean Factor Scores (Range is from a low of 1 to a high of 5)**



Parent/Guardian Factor Scores			
	Rogers Park Elementary School	Overall Elementary Schools	District
Respectful Climate	4.36	4.39	4.29
Parent/Guardian and Community Involvement	4.36	4.38	4.28

**Climate and Connectedness Parent/Guardian Survey - Rogers Park**



Parent/Guardian Mean Response by Questions Related to School Climate - Overall

	Rogers Park Elementary School	Overall Elementary Schools	District
My child's school is a supportive and inviting place	4.44	4.45	4.35
My child is safe at school	4.28	4.37	4.28
I feel welcome at this school	4.47	4.43	4.34
I am satisfied with communication with my child's teacher(s)	4.31	4.34	4.17
My child is getting a good education at this school	4.44	4.34	4.23
My child is treated fairly at school	4.37	4.34	4.25
My child likes his/her teachers	4.44	4.54	4.31
At this school, there are good supports for all children, including children with learning disabilities	4.08	4.23	4.12
This school is a supportive and inviting place for parents/guardians	4.27	4.35	4.24
Adults at this school respect cultural diversity	4.23	4.37	4.29
Adults at this school have high expectations of my child	4.38	4.29	4.20
Teachers at my child's school are interested in what I have to say	4.34	4.31	4.18
I feel like I am actively involved in my child's education	4.42	4.41	4.31
The district's school calendar meets the needs of my child and our family	4.04	4.11	4.07

Range is from a low of 1 to a high of 5

Parent/Guardian Mean Response by Questions Related to School Climate by Ethnicity (Self-Reported)							
Rogers Park Elementary School	AF AM	AKNA/AI	Asian/NH	White	Hispanic	ME	Other
My child's school is a supportive and inviting place	***	3.00	4.80	4.44	5.00	4.50	4.50
My child is safe at school	***	3.00	4.40	4.26	5.00	4.43	4.50
I feel welcome at this school	***	3.00	5.00	4.34	5.00	4.93	5.00
I am satisfied with communication with my child's teacher(s)	***	3.00	4.60	4.23	5.00	4.71	5.00
My child is getting a good education at this school	***	3.00	5.00	4.37	5.00	4.79	4.50
My child is treated fairly at school	***	2.00	4.80	4.26	5.00	4.79	5.00
My child likes his/her teachers	***	4.00	5.00	4.37	5.00	4.79	4.50
At this school, there are good supports for all children, including children with learning disabilities	***	3.00	4.40	3.97	5.00	4.82	4.00
This school is a supportive and inviting place for parents/guardians	***	3.00	5.00	4.09	5.00	4.71	5.00
Adults at this school respect cultural diversity	***	1.00	4.60	4.30	5.00	4.00	4.50
Adults at this school have high expectations of my child	***	2.00	4.80	4.37	5.00	4.50	5.00
Teachers at my child's school are interested in what I have to say	***	4.00	4.60	4.25	5.00	4.64	5.00
I feel like I am actively involved in my child's education	***	4.00	4.40	4.35	5.00	4.79	5.00
The district's school calendar meets the needs of my child and our family	***	4.00	4.40	3.98	5.00	4.07	4.50
Overall Elementary Schools							
My child's school is a supportive and inviting place	4.36	4.47	4.44	4.47	4.51	4.46	4.26
My child is safe at school	4.40	4.42	4.36	4.38	4.42	4.35	4.23
I feel welcome at this school	4.38	4.37	4.48	4.44	4.47	4.49	4.27
I am satisfied with communication with my child's teacher(s)	4.30	4.40	4.36	4.35	4.45	4.35	4.19
My child is getting a good education at this school	4.28	4.40	4.40	4.33	4.44	4.38	4.04
My child is treated fairly at school	4.15	4.34	4.32	4.38	4.37	4.33	4.14
My child likes his/her teachers	4.41	4.52	4.53	4.57	4.47	4.55	4.49
At this school, there are good supports for all children, including children with learning disabilities	4.06	4.32	4.31	4.22	4.31	4.31	4.05
This school is a supportive and inviting place for parents/guardians	4.22	4.31	4.38	4.36	4.42	4.44	4.11
Adults at this school respect cultural diversity	4.25	4.28	4.27	4.43	4.38	4.39	4.19
Adults at this school have high expectations of my child	4.26	4.30	4.27	4.31	4.36	4.28	3.95
Teachers at my child's school are interested in what I have to say	4.25	4.35	4.24	4.33	4.39	4.31	4.16
I feel like I am actively involved in my child's education	4.48	4.38	4.31	4.45	4.40	4.40	4.20
The district's school calendar meets the needs of my child and our family	4.25	4.22	4.19	4.10	4.20	4.08	3.62
District							
My child's school is a supportive and inviting place	4.20	4.37	4.37	4.37	4.41	4.37	4.20
My child is safe at school	4.18	4.31	4.31	4.29	4.29	4.30	4.11
I feel welcome at this school	4.18	4.31	4.36	4.36	4.38	4.40	4.23
I am satisfied with communication with my child's teacher(s)	3.99	4.21	4.23	4.16	4.32	4.20	4.03
My child is getting a good education at this school	4.09	4.28	4.31	4.23	4.33	4.26	4.03
My child is treated fairly at school	3.94	4.21	4.24	4.29	4.30	4.24	4.08
My child likes his/her teachers	4.06	4.33	4.35	4.33	4.31	4.34	4.20
At this school, there are good supports for all children, including children with learning disabilities	3.90	4.19	4.23	4.11	4.24	4.18	3.97
This school is a supportive and inviting place for parents/guardians	4.05	4.21	4.29	4.26	4.31	4.31	4.05
Adults at this school respect cultural diversity	4.02	4.20	4.22	4.34	4.29	4.31	4.17
Adults at this school have high expectations of my child	4.05	4.24	4.21	4.21	4.26	4.20	3.94
Teachers at my child's school are interested in what I have to say	4.04	4.22	4.17	4.20	4.28	4.19	4.05
I feel like I am actively involved in my child's education	4.36	4.29	4.24	4.33	4.37	4.30	4.20
The district's school calendar meets the needs of my child and our family	4.18	4.19	4.16	4.06	4.21	4.02	3.66

Range is from a low of 1 to a high of 5

\*\*\*Results can not be calculated because of missing responses