

## Romig Middle School Overview

### Statement of Program

Romig Middle School offers educational opportunities for students in grades 7-8 through the team approach and middle school model. Our school offers traditional instruction as well as highly gifted, gifted, bilingual, remedial and special education services. Romig also hosts a Spanish immersion program offered by the Anchorage School District.

The dedicated staff of Romig promotes an environment for students to develop to their highest potential. In our ever-changing and diverse world, students are encouraged to become active, productive and involved students both within their school and in society. We are proud of our selection by the district as a model school emphasizing social and emotional growth and learning.

Our connection to West High School allows students to accelerate their studies in mathematics and world languages and provides multi-level interactions between students and teachers. Our continuous goal is our commitment to providing a safe, supportive and respectful learning environment for all students

From the School Report Card

School Goals	
Goal	Level of Achievement
The number of students rated not proficient on the state math assessment will decrease by 10 percent in each subgroup	Partially Attained
The number of students rated not proficient on the state language arts assessment will decrease by 10 percent in each subgroup	Partially Attained
Implementation of social and emotional learning activities will promote positive peer relationships, a sense of belonging and an appreciation for diversity.	Attained

From the School Report Card

Budget*	
2006-07 Actual Expenditures	\$4,885,378
2007-08 Revised Budgeted Amount	\$6,316,970
2008-09 Proposed Budget	\$6,427,552

\*Dollars budgeted or expended are general fund only  
From IFAS

Romig Middle School Characteristics			
	School	District	Source of Information
Membership	842	48,858	Fall OASIS
Capacity	100.97%	N/A	2008-18 ASD Capital Improvement Plan
Attendance Rate	91.33%	92.83%	NCLB Summer Data Collection
Retention Rate K-8	6.03%	0.60%	SMS and NCLB Summer Data Collection
Transiency Rate	24.92%	26.07%	NCLB Summer Data Collection
Economically Disadvantaged	440	17,717	Fall OASIS
Average Weekly Volunteer Hours	15	4,660	Department of Education Report Card Report
Dropout Rate	0.12%	3.93%	NCLB Summer Data Collection & Fall Oasis
Students Taking the Alternate Assessment	8	228	SMS
Change in Enrollment	5.91%	-0.76%	Fall Oasis

Teacher Qualification				
Number of Teachers	Percent Fully Licensed	Percent With Advanced Degrees	Number Nationally Board Certified	Percent of Classes Taught by "Highly Qualified Teachers"
66	100.00%	53.03%	0	92.07%

Romig Middle School Business Partnerships
Northern Forum; First CME Community Development Center

From the School Report Card

Ethnicity Report							
African-American/Black	Alaska Native/American Indian	Asian	Native Hawaiian/Other Pacific Islander	White	Hispanic	Multi-Ethnic	Total
52	85	135	58	296	117	99	842

From Fall Oasis

Full Academic Year		
Students Enrolled	Students Enrolled for FAY	Percent FAY
825	745	90.30%

From participation file (Grades 3-10)

Total Dropout Rate - Romig Middle School								
	African-American/Black	Alaska Native/American Indian	Asian	Native Hawaiian/Other Pacific Islander	White	Hispanic	Multi-Ethnic	Total
Enrollment	51	83	135	54	292	116	98	829
Final Dropouts	*	*	*	*	*	*	*	*
% of Dropouts	0.00%	1.20%	0.00%	0.00%	0.00%	0.00%	0.00%	0.12%

From NCLB Summer Data Collection and Fall OASIS

\* Results cannot be published without releasing personally identifiable information based upon the EED reporting protocol

**Romig Middle School  
2007-08 Adequate Yearly Progress  
Status Report**

Does Not Meet AYP  
Level 5 (Second Year)

AMO For Language Arts: 77.18%  
AMO For Mathematics: 66.09%

Group	Participation Rate				"FAY" (D) Tested & Enrolled "FAY"	Language Arts Performance				Mathematics Performance			
	(A) Number Enrolled	(B) Number Tested	Participation Rate (%)	(C) Participation Rate Met		(E) Proficient on LA	(F) Percent Proficient on LA	(G) LA Target	(H) Met AMO for LA	(I) Proficient on Mathematics	(J) Percent Proficient in Mathematics	(K) Mathematics Target	(L) Met AMO for Mathematics
All Students	825	819	99.3%	Yes	735	563	76.6%	73.6%	Yes	503	68.4%	62%	Yes
AF AM	47	47	100%	Yes	44	29	65.9%	62.4%	Yes	19	43.2%	49.5%	No
AKNA/AI	73	73	100%	Yes	64	36	56.2%	65%	No	36	56.2%	52.3%	Yes
Asian/NH/OPI	204	203	99.5%	Yes	166	116	69.9%	69.6%	Yes	105	63.3%	57.5%	Yes
White	292	289	99%	Yes	268	232	86.6%	71.2%	Yes	209	78%	59.4%	Yes
Hispanic	112	112	100%	Yes	107	81	75.7%	67.7%	Yes	73	68.2%	55.4%	Yes
ME	97	95	97.9%	Yes	86	69	80.2%	66.6%	Yes	61	70.9%	54.2%	Yes
EDS	432	428	99.1%	Yes	367	250	68.1%	72.1%	No	215	58.6%	60.3%	No
SWD	123	121	98.4%	Yes	105	34	32.4%	67.6%	Yes-SH	27	25.7%	55.3%	No
LEP	268	266	99.3%	Yes	229	154	67.2%	70.7%	Yes-SH	129	56.3%	58.8%	No

Attendance Rate: Met

91.3% (Threshold is 85%)

N/A is used to indicate:

- (1) Subgroups with 20 or fewer students enrolled on the first day of testing shall not be included in participation rate calculation.
- (2) Subgroups with 25 or fewer students enrolled for the "full academic year" shall not have the performance score computed.

\* For the groups where the number enrolled is less than or equal to 40, participation is met when no more than two miss the test. Groups can also meet this target using the average of the past two or three years.

\*\* When a group achieves a "Yes" without meeting the listed target, it has done so using either the 99% confidence interval or Safe Harbor.

\*\*\* The results cannot be published without releasing personally identifiable information based upon the EED reporting protocol.

This document was prepared by the ASD Assessment and Evaluation Department.

7/10/2008

Romig Middle School  
2007-08 Adequate Yearly Progress  
Growth Report

The AYP growth reports are generated by the Alaska State Department of Education and Early Development. The reports can be found online at: [http://www.asdk12.org/depts/assess\\_eval/AYP/State\\_ASD\\_AYG\\_0708.pdf](http://www.asdk12.org/depts/assess_eval/AYP/State_ASD_AYG_0708.pdf)

SBA Proficiency Comparison by Grade for Romig Middle School																
	Reading Percent Proficient				Writing Percent Proficient				Mathematics Percent Proficient				Science* Percent Proficient			
	04-05	05-06	06-07	07-08	04-05	05-06	06-07	07-08	04-05	05-06	06-07	07-08	04-05	05-06	06-07	07-08
All Students	74.25%	77.33%	82.56%	79.55%	73.29%	72.52%	73.01%	68.90%	63.01%	64.28%	70.13%	66.67%	N/A	N/A	N/A	48.43%
Grade 7	71.14%	74.69%	80.21%	77.18%	72.89%	69.36%	72.49%	66.92%	65.93%	62.59%	72.44%	67.09%	N/A	N/A	N/A	N/A
Grade 8	77.36%	80.10%	84.79%	81.77%	73.70%	75.89%	73.50%	70.74%	60.05%	66.08%	67.92%	66.27%	N/A	N/A	N/A	48.43%

\* 2007-08 was the first year Science was administered for grades 4, 8 and 10 on the SBA.

SBA Proficient & Not Proficient by NCLB Groups for Romig Middle School								
	Reading		Writing		Mathematics		Science	
	Percent Proficient	Percent Not Proficient	Percent Proficient	Percent Not Proficient	Percent Proficient	Percent Not Proficient	Percent Proficient	Percent Not Proficient
All Students	79.55%	20.45%	68.90%	31.10%	66.67%	33.33%	48.43%	51.57%
AF AM	72.34%	27.66%	59.57%	40.43%	42.55%	57.45%	39.13%	60.87%
AKNA/AI	62.50%	37.50%	48.61%	51.39%	54.17%	45.83%	34.29%	65.71%
Asian	77.24%	22.76%	64.14%	35.86%	65.31%	34.69%	28.57%	71.43%
NH/OPI	63.46%	36.54%	45.28%	54.72%	45.28%	54.72%	13.64%	86.36%
White	87.85%	12.15%	79.79%	20.21%	77.08%	22.92%	68.59%	31.41%
Hispanic	80.00%	20.00%	68.81%	31.19%	66.97%	33.03%	47.46%	52.54%
Multi-Ethnic	82.80%	17.20%	76.60%	23.40%	70.21%	29.79%	46.34%	53.66%
EDS	73.10%	26.90%	58.91%	41.09%	57.21%	42.79%	34.93%	65.07%
Non-EDS	86.56%	13.44%	79.79%	20.21%	77.00%	23.00%	62.25%	37.75%
SWD	27.08%	72.92%	14.74%	85.26%	17.71%	82.29%	14.58%	85.42%
Non-SWD	86.64%	13.36%	76.12%	23.88%	73.25%	26.75%	52.88%	47.12%
LEP	52.53%	47.47%	34.18%	65.82%	35.00%	65.00%	7.50%	92.50%
Not LEP	86.13%	13.87%	77.35%	22.65%	74.46%	25.54%	58.26%	41.74%
Migrant	80.00%	20.00%	63.33%	36.67%	60.00%	40.00%	35.71%	64.29%
Not Migrant	79.54%	20.46%	69.11%	30.89%	66.92%	33.08%	48.87%	51.13%
Female	86.90%	13.10%	79.20%	20.80%	70.75%	29.25%	50.00%	50.00%
Male	72.44%	27.56%	58.82%	41.18%	62.68%	37.32%	46.89%	53.11%

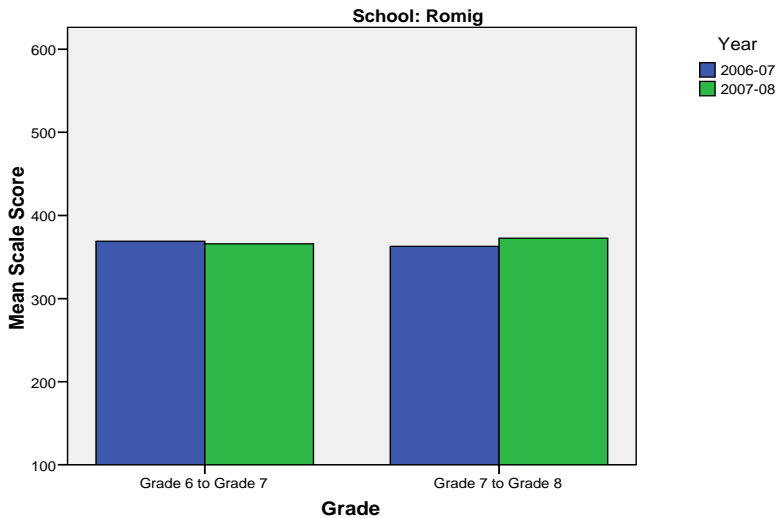
SBA Mean Scale Score Comparison by NCLB Groups for Romig Middle School								
	Reading		Writing		Mathematics		Science**	
	06-07	07-08	06-07	07-08	06-07	07-08	06-07	07-08
All Students	375.34	365.81	351.63	344.60	344.60	338.44	N/A	299.94
AF AM	340.52	340.11	313.32	318.32	297.39	292.96	N/A	278.26
AKNA/AI	343.97	330.50	307.67	304.79	306.90	306.63	N/A	265.09
Asian	360.41*	347.18	345.22*	329.76	343.43*	333.34	N/A	269.40
NH/OPI	N/A	316.69	N/A	290.91	N/A	286.62	N/A	225.64
White	404.08	399.26	383.59	376.02	375.06	367.61	N/A	334.96
Hispanic	354.74	354.84	330.31	341.83	319.58	328.80	N/A	298.68
ME	346.66	372.00	313.21	348.64	308.58	344.51	N/A	307.71
EDS	348.94	342.94	320.61	319.03	314.25	313.95	N/A	274.29
Non-EDS	395.21	390.62	374.96	372.48	367.69	365.20	N/A	326.23
SWD	287.43	282.29	252.90	253.57	262.38	253.00	N/A	221.88
Non-SWD	387.68	377.08	365.52	356.74	356.28	349.92	N/A	310.21
LEP	341.58	301.62	319.01	284.53	311.60	286.29	N/A	230.84
Not LEP	387.30	381.43	363.22	359.22	356.68	351.27	N/A	316.55
Migrant	339.17	353.30	306.21	307.97	300.88	307.90	N/A	264.93
Not Migrant	376.49	366.29	353.07	346.01	346.05	339.61	N/A	301.17
Female	389.96	382.13	375.03	367.24	353.11	348.21	N/A	306.46
Male	360.79	350.00	328.34	322.45	336.26	328.90	N/A	293.58

\* Prior to 2007-08 the Asian category includes Native Hawaiian/Other Pacific Islander. In 2007-08 Native Hawaiian/Other Pacific Islander is a separate ethnic category.

\*\* 2007-08 was the first year Science was administered for grades 4, 8 and 10 on the SBA.

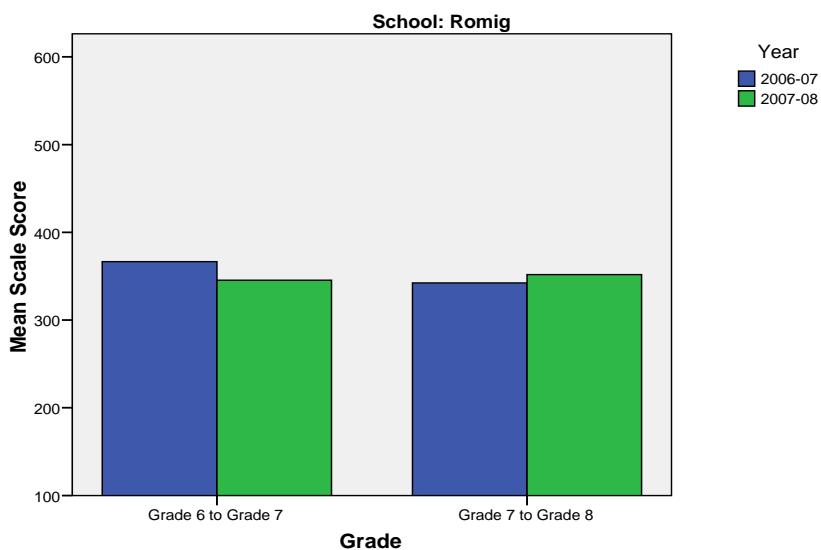
Romig Middle School SBA Change Average Scale Score by NCLB Groups: Reading						
	Average Scale Score of Students Tested in District Both Years			Average Scale Score of Students Tested in District Both Years		
	Grade 6-in 06-07	Grade 7 in 07-08	Difference	Grade 7-in 06-07	Grade 8 in 07-08	Difference
All Students	369.03	365.94	-3.09	362.83	372.65	9.82
African-American/Black	321.00	315.29	-5.71	346.75	363.85	17.10
Alaska Native/American Indian	339.64	328.94	-10.70	334.61	330.81	-3.81
Asian	350.46	354.50	4.04	341.71	354.32	12.61
Native Hawaiian/Other Pacific Islander	319.12	316.54	-2.58	296.05	316.00	19.95
White	403.81	403.12	-0.69	396.47	403.65	7.19
Hispanic	352.73	346.31	-6.43	351.72	363.42	11.70
Multi-Ethnic (2 or More Races)	385.70	378.50	-7.20	353.38	367.59	14.21
Economically Disadvantaged	345.34	343.51	-1.83	338.63	349.56	10.93
Non-Economically Disadvantaged	394.69	390.22	-4.47	385.90	394.64	8.75
Students with Disabilities	295.98	280.00	-15.98	264.66	284.51	19.85
Students without Disabilities	379.74	378.54	-1.21	374.95	383.53	8.58
LEP	301.39	298.43	-2.97	288.52	305.68	17.16
Not LEP	383.21	380.09	-3.12	377.65	386.00	8.35
Migrant	373.07	375.21	2.14	341.00	340.92	-0.08
Not Migrant	368.87	365.56	-3.31	363.62	373.79	10.17
Female	380.83	381.49	0.66	379.86	390.29	10.43
Male	358.02	351.41	-6.60	345.34	354.53	9.18

Change in Mean Scale Score in SBA Reading by Grade Between 2006-07 and 2007-08



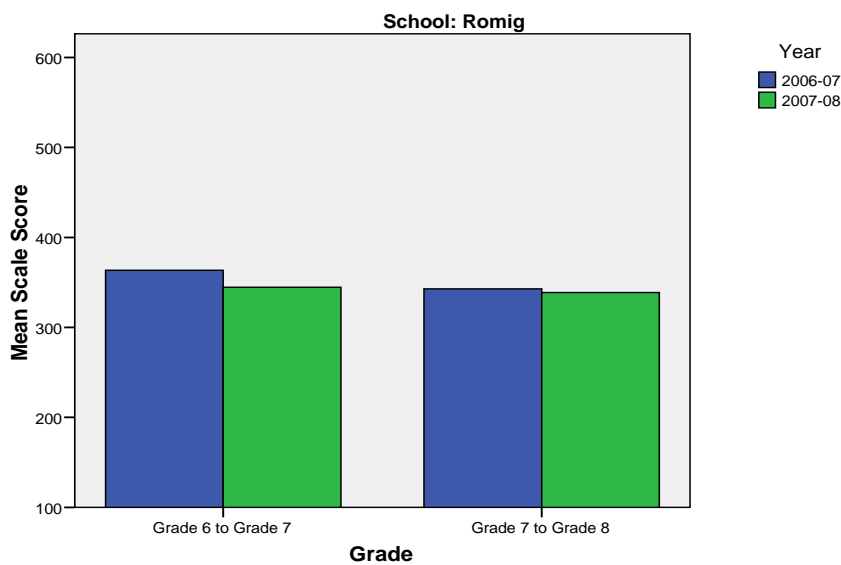
Romig Middle School SBA Change Average Scale Score by NCLB Groups: Writing						
	Average Scale Score of Students Tested in District Both Years			Average Scale Score of Students Tested in District Both Years		
	Grade 6-in 06-07	Grade 7 in 07-08	Difference	Grade 7-in 06-07	Grade 8 in 07-08	Difference
All Students	366.65	345.40	-21.25	342.32	351.87	9.56
African-American/Black	307.71	296.43	-11.29	324.85	344.85	20.00
Alaska Native/American Indian	317.55	308.06	-9.48	311.61	302.81	-8.81
Asian	345.13	333.58	-11.56	328.19	339.02	10.82
Native Hawaiian/Other Pacific Islander	281.69	292.88	11.19	274.81	287.71	12.90
White	416.87	379.48	-37.39	376.64	383.20	6.55
Hispanic	356.53	336.67	-19.86	328.29	346.41	18.13
Multi-Ethnic (2 or More Races)	379.53	356.76	-22.76	328.77	342.46	13.69
Economically Disadvantaged	332.97	321.57	-11.40	315.38	325.17	9.79
Non-Economically Disadvantaged	403.12	371.21	-31.92	368.12	377.45	9.33
Students with Disabilities	278.14	267.16	-10.98	240.76	243.51	2.76
Students without Disabilities	379.30	356.58	-22.72	354.90	365.30	10.40
LEP	272.46	290.89	18.43	271.79	276.87	5.08
Not LEP	386.40	356.83	-29.57	356.42	366.87	10.45
Migrant	338.64	319.71	-18.93	319.77	303.46	-16.31
Not Migrant	367.81	346.46	-21.35	343.13	353.63	10.49
Female	389.11	367.51	-21.60	368.37	377.44	9.07
Male	345.44	324.51	-20.93	315.42	325.47	10.05

Change in Mean Scale Score in SBA Writing by Grade between 2006-07 and 2007-08



Romig Middle School SBA Change Average Scale Score by NCLB Groups: Mathematics						
	Average Scale Score of Students Tested in District Both Years			Average Scale Score of Students Tested in District Both Years		
	Grade 6-in 06-07	Grade 7 in 07-08	Difference	Grade 7-in 06-07	Grade 8 in 07-08	Difference
All Students	363.40	344.63	-18.77	342.73	338.71	-4.01
African-American/Black	299.73	271.45	-28.27	313.65	314.15	0.50
Alaska Native/American Indian	331.42	308.82	-22.61	303.00	304.71	1.71
Asian	365.72	341.55	-24.17	338.33	335.22	-3.11
Native Hawaiian/Other Pacific Islander	304.73	284.62	-20.12	281.64	287.91	6.27
White	399.83	382.35	-17.49	368.10	364.57	-3.54
Hispanic	344.56	331.12	-13.44	334.00	328.18	-5.82
Multi-Ethnic (2 or More Races)	371.06	356.92	-14.14	350.46	333.26	-17.21
Economically Disadvantaged	338.31	316.75	-21.56	317.99	315.13	-2.86
Non-Economically Disadvantaged	390.84	375.13	-15.71	366.81	361.68	-5.13
Students with Disabilities	291.80	262.11	-29.69	254.44	246.78	-7.66
Students without Disabilities	373.76	356.57	-17.19	353.56	350.00	-3.56
LEP	299.86	284.88	-14.98	277.17	282.03	4.86
Not LEP	377.32	357.73	-19.60	356.73	350.82	-5.91
Migrant	350.00	327.93	-22.07	303.57	288.29	-15.29
Not Migrant	363.94	345.31	-18.63	344.24	340.67	-3.57
Female	371.51	357.18	-14.34	355.03	350.02	-5.02
Male	355.89	333.03	-22.86	330.22	327.23	-2.99

Change in Mean Scale Score in SBA Mathematics by Grade between 2006-07 and 2007-08



Reading: SBA Results Compared for Romig Middle School, District and State Grades 7 and 8															
	% Advanced Proficient			% Proficient			% Below Proficient			% Far Below Proficient			% Tested		
	School	District	State	School	District	State	School	District	State	School	District	State	School	District	State
All Students	30.24%	36.46%	34.57%	49.32%	48.69%	48.62%	14.99%	11.55%	12.88%	5.45%	3.29%	3.93%	97.82%	97.85%	97.86%
AF AM	17.02%	19.00%	20.66%	55.32%	58.30%	57.93%	17.02%	17.03%	15.72%	10.64%	5.68%	5.69%	100.00%	97.86%	98.38%
AKNA/AI	12.50%	19.97%	15.19%	50.00%	52.76%	51.58%	30.56%	20.94%	25.14%	6.94%	6.33%	8.08%	98.63%	95.36%	96.93%
Asian	19.31%	28.61%	27.53%	57.93%	54.01%	53.96%	15.86%	13.72%	14.90%	6.90%	3.65%	3.60%	96.67%	97.58%	97.49%
NH/OPI	*	8.40%	N/A	*	53.78%	N/A	25.00%	28.57%	N/A	11.54%	9.24%	N/A	96.30%	98.76%	N/A
White	50.69%	47.51%	45.02%	37.15%	43.41%	45.22%	9.72%	7.25%	7.53%	2.43%	1.83%	2.22%	98.63%	98.46%	98.29%
Hispanic	21.82%	27.54%	28.38%	58.18%	55.39%	54.32%	14.55%	13.17%	13.31%	5.45%	3.89%	3.98%	98.21%	97.80%	98.00%
ME	29.03%	30.61%	32.24%	53.76%	52.80%	52.18%	11.83%	12.80%	12.02%	5.38%	3.78%	3.56%	95.88%	97.04%	97.23%
EDS	17.38%	18.54%	20.30%	55.71%	54.95%	51.97%	18.57%	20.04%	20.88%	8.33%	6.47%	6.84%	97.22%	96.31%	95.86%
Not EDS	44.19%	46.21%	43.42%	42.38%	45.29%	46.55%	11.11%	6.93%	7.91%	2.33%	1.57%	2.12%	98.47%	98.71%	99.14%
SWD	5.21%	5.65%	5.39%	21.88%	39.65%	39.16%	46.88%	37.65%	36.10%	26.04%	17.06%	19.35%	90.57%	90.81%	92.10%
Non SWD	33.61%	40.59%	38.46%	53.02%	49.91%	49.89%	10.69%	8.05%	9.78%	2.67%	1.45%	1.87%	98.89%	98.88%	98.68%
LEP	1.90%	4.34%	3.40%	50.63%	52.25%	45.68%	34.18%	31.74%	37.23%	13.29%	11.68%	13.69%	95.76%	95.57%	96.43%
Not LEP	37.13%	39.75%	38.87%	49.00%	48.33%	49.03%	10.32%	9.49%	9.52%	3.54%	2.44%	2.58%	98.33%	98.09%	98.06%
Migrant	16.67%	23.05%	18.13%	63.33%	50.51%	49.19%	*	20.34%	25.53%	*	6.10%	7.15%	100.00%	98.33%	98.16%
Not Migrant	30.76%	37.03%	35.71%	48.78%	48.62%	48.58%	15.06%	11.18%	12.00%	5.41%	3.17%	3.71%	97.74%	97.83%	97.84%
Female	36.78%	39.92%	38.60%	50.13%	49.13%	48.79%	9.57%	8.92%	10.13%	3.53%	2.04%	2.48%	97.78%	98.14%	98.03%
Male	23.90%	33.21%	30.74%	48.54%	48.29%	48.47%	20.24%	14.03%	15.49%	7.32%	4.48%	5.30%	97.85%	97.58%	97.70%

\* Results cannot be published without releasing personally identifiable information based upon the EED reporting protocol

Writing: SBA Results Compared for Romig Middle School, District and State Grades 7 and 8															
	% Advanced Proficient			% Proficient			% Below Proficient			% Far Below Proficient			% Tested		
	School	District	State	School	District	State	School	District	State	School	District	State	School	District	State
All Students	11.65%	11.86%	10.41%	57.25%	62.70%	61.09%	22.06%	18.67%	20.92%	9.05%	6.77%	7.58%	97.82%	97.97%	97.77%
AF AM	*	4.39%	4.97%	*	57.68%	58.58%	29.79%	28.29%	27.26%	10.64%	9.65%	9.19%	100.00%	97.44%	97.79%
AKNA/AI	4.17%	3.72%	2.85%	44.44%	50.89%	46.57%	37.50%	31.02%	34.58%	13.89%	14.38%	15.99%	98.63%	95.82%	97.09%
Asian	6.21%	9.18%	8.28%	57.93%	62.10%	62.39%	25.52%	21.87%	22.29%	10.34%	6.85%	7.04%	96.67%	97.72%	97.64%
NH/OPI	*	*	N/A	*	*	N/A	35.85%	33.47%	N/A	18.87%	16.74%	N/A	98.15%	99.17%	N/A
White	20.56%	16.21%	14.37%	59.23%	66.42%	66.50%	14.63%	13.35%	14.89%	5.57%	4.01%	4.25%	98.29%	98.59%	98.10%
Hispanic	8.26%	10.06%	8.18%	60.55%	61.71%	63.88%	23.85%	19.97%	21.03%	7.34%	8.26%	6.91%	97.32%	97.51%	97.81%
ME	12.77%	9.36%	9.88%	63.83%	62.82%	62.78%	13.83%	20.05%	20.12%	9.57%	7.78%	7.21%	96.91%	97.40%	97.23%
EDS	4.51%	3.77%	4.20%	54.39%	54.85%	53.45%	27.79%	28.17%	29.69%	13.30%	13.20%	12.66%	97.45%	96.69%	95.78%
Not EDS	19.43%	16.27%	14.27%	60.36%	66.98%	65.82%	15.80%	13.48%	15.47%	4.40%	3.26%	4.43%	98.22%	98.69%	99.05%
SWD	*	0.94%	0.72%	*	26.86%	25.75%	44.21%	42.99%	44.66%	41.05%	29.21%	28.86%	89.62%	90.71%	91.85%
Non SWD	13.20%	13.31%	11.70%	62.92%	67.49%	65.79%	19.10%	15.42%	17.76%	4.78%	3.78%	4.75%	99.03%	99.03%	98.62%
LEP	*	1.05%	0.57%	*	38.02%	31.72%	46.20%	41.62%	45.08%	19.62%	19.31%	22.63%	95.76%	95.57%	96.60%
Not LEP	14.18%	12.96%	11.78%	63.17%	65.22%	65.15%	16.18%	16.33%	17.58%	6.47%	5.49%	5.50%	98.33%	98.23%	97.94%
Migrant	*	4.38%	3.57%	*	55.56%	48.98%	23.33%	27.95%	33.31%	13.33%	12.12%	14.13%	100.00%	99.00%	98.24%
Not Migrant	12.10%	12.18%	10.89%	57.01%	63.00%	61.93%	22.01%	18.27%	20.06%	8.88%	6.55%	7.12%	97.74%	97.93%	97.74%
Female	17.79%	16.61%	14.82%	61.40%	65.43%	64.82%	16.29%	14.21%	16.01%	4.51%	3.75%	4.35%	98.28%	98.42%	98.00%
Male	5.64%	7.37%	6.23%	53.19%	60.12%	57.53%	27.70%	22.88%	25.59%	13.48%	9.63%	10.65%	97.37%	97.55%	97.56%

\* Results cannot be published without releasing personally identifiable information based upon the EED reporting protocol

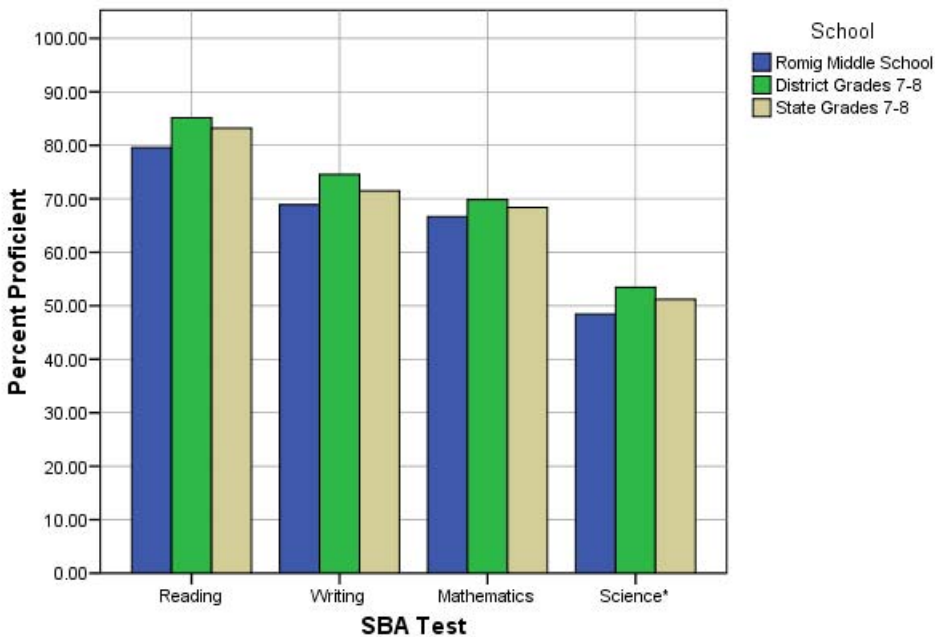
Mathematics: SBA Results Compared for Romig Middle School, District and State Grades 7 and 8															
	% Advanced Proficient			% Proficient			% Below Proficient			% Far Below Proficient			% Tested		
	School	District	State	School	District	State	School	District	State	School	District	State	School	District	State
All Students	29.38%	31.33%	29.02%	37.28%	38.49%	39.36%	17.78%	17.87%	18.72%	15.56%	12.31%	12.90%	98.18%	97.81%	97.73%
AF AM	6.38%	12.58%	14.65%	36.17%	35.54%	36.40%	29.79%	28.26%	26.44%	27.66%	23.62%	22.51%	100.00%	96.79%	97.50%
AKNA/AI	15.28%	17.89%	14.46%	38.89%	34.80%	35.46%	19.44%	25.04%	26.44%	26.39%	22.28%	23.64%	98.63%	95.20%	96.77%
Asian	22.45%	29.58%	27.87%	42.86%	40.26%	40.20%	19.73%	18.76%	18.72%	14.97%	11.40%	13.21%	98.00%	98.72%	98.64%
NH/OPI	7.55%	6.67%	N/A	37.74%	35.42%	N/A	26.42%	26.67%	N/A	28.30%	31.25%	N/A	98.15%	99.59%	N/A
White	44.79%	40.28%	36.66%	32.29%	38.52%	40.75%	13.54%	13.95%	14.82%	9.38%	7.25%	7.77%	98.63%	98.19%	98.00%
Hispanic	21.10%	22.65%	22.24%	45.87%	40.98%	41.68%	18.35%	21.61%	22.44%	14.68%	14.75%	13.64%	97.32%	98.24%	98.48%
ME	37.23%	27.20%	28.57%	32.98%	40.12%	39.73%	14.89%	18.05%	18.13%	14.89%	14.63%	13.57%	96.91%	97.04%	96.97%
EDS	17.73%	15.55%	16.77%	39.48%	37.90%	38.20%	21.51%	24.48%	24.34%	21.28%	22.08%	20.69%	97.92%	96.54%	95.81%
Not EDS	42.12%	39.96%	36.63%	34.88%	38.82%	40.08%	13.70%	14.26%	15.23%	9.30%	6.97%	8.06%	98.47%	98.52%	98.96%
SWD	6.25%	5.81%	5.39%	11.46%	20.26%	22.07%	25.00%	26.66%	28.40%	57.29%	47.27%	44.13%	90.57%	90.17%	92.02%
Non SWD	32.49%	34.73%	32.17%	40.76%	40.92%	41.67%	16.81%	16.70%	17.43%	9.94%	7.66%	8.73%	99.30%	98.92%	98.54%
LEP	3.75%	5.73%	4.98%	31.25%	30.10%	27.54%	35.00%	32.01%	32.96%	30.00%	32.16%	34.52%	96.97%	97.42%	97.06%
Not LEP	35.69%	34.01%	32.36%	38.77%	39.37%	41.00%	13.54%	16.39%	16.74%	12.00%	10.23%	9.89%	98.48%	97.85%	97.82%
Migrant	16.67%	17.29%	17.58%	43.33%	40.68%	36.29%	16.67%	22.37%	25.14%	23.33%	19.66%	20.99%	100.00%	98.33%	98.08%
Not Migrant	29.87%	31.93%	29.81%	37.05%	38.40%	39.57%	17.82%	17.68%	18.28%	15.26%	11.99%	12.34%	98.11%	97.79%	97.70%
Female	33.75%	30.98%	28.90%	37.00%	39.19%	40.85%	15.75%	18.89%	19.04%	13.50%	10.94%	11.22%	98.52%	98.31%	98.00%
Male	25.12%	31.67%	29.13%	37.56%	37.83%	37.94%	19.76%	16.90%	18.42%	17.56%	13.60%	14.50%	97.85%	97.34%	97.46%

\* Results cannot be published without releasing personally identifiable information based upon the EED reporting protocol

Science: SBA Results Compared for Romig Middle School, District and State Grade 8															
	% Advanced Proficient			% Proficient			% Below Proficient			% Far Below Proficient			% Tested		
	School	District	State	School	District	State	School	District	State	School	District	State	School	District	State
All Students	23.00%	27.02%	25.2%	25.42%	26.43%	26.0%	20.58%	20.65%	21.3%	30.99%	25.90%	27.4%	96.95%	96.39%	94.91%
AF AM	*	10.34%	10.7%	*	19.40%	21.1%	26.09%	25.43%	26.1%	34.78%	44.83%	42.1%	100.00%	96.27%	94.36%
AKNA/AI	*	10.33%	8.9%	*	25.84%	18.0%	22.86%	21.88%	23.7%	42.86%	41.95%	49.4%	97.22%	93.47%	93.67%
Asian	9.09%	16.86%	16.1%	19.48%	22.00%	23.2%	28.57%	26.57%	25.5%	42.86%	34.57%	35.2%	96.25%	97.77%	97.29%
NH/OPI	*	6.42%	N/A	*	11.93%	N/A	13.64%	17.43%	N/A	72.73%	64.22%	N/A	95.65%	99.09%	N/A
White	39.10%	38.15%	35.1%	29.49%	29.71%	30.0%	14.74%	17.80%	19.0%	16.67%	14.34%	15.9%	96.89%	96.75%	95.14%
Hispanic	16.95%	16.57%	15.8%	30.51%	25.60%	27.5%	22.03%	27.11%	26.3%	30.51%	30.72%	30.4%	96.72%	96.79%	95.92%
ME	31.71%	21.93%	23.0%	14.63%	24.28%	24.2%	24.39%	20.37%	20.9%	29.27%	33.42%	31.9%	97.62%	95.04%	93.83%
EDS	11.00%	10.38%	12.3%	23.92%	21.96%	21.1%	22.97%	22.76%	22.7%	42.11%	44.89%	43.9%	96.76%	94.85%	93.13%
Not EDS	35.29%	35.95%	33.1%	26.96%	28.83%	29.0%	18.14%	19.52%	20.5%	19.61%	15.70%	17.4%	97.14%	97.25%	96.02%
SWD	*	4.72%	4.3%	*	11.32%	9.4%	6.25%	20.28%	18.8%	79.17%	63.68%	67.5%	90.57%	89.45%	89.82%
Non SWD	25.48%	30.01%	28.0%	27.40%	28.46%	28.2%	22.47%	20.70%	21.6%	24.66%	20.83%	22.1%	97.86%	97.41%	95.62%
LEP	*	2.59%	1.7%	*	7.78%	6.0%	20.00%	21.90%	18.4%	72.50%	67.72%	73.5%	96.39%	98.02%	94.82%
Not LEP	28.23%	29.64%	28.5%	30.03%	28.43%	28.8%	20.72%	20.52%	21.7%	21.02%	21.42%	21.0%	97.08%	96.22%	94.92%
Migrant	*	13.46%	11.5%	*	28.85%	20.9%	21.43%	19.87%	20.2%	42.86%	37.82%	47.4%	100.00%	93.41%	95.03%
Not Migrant	23.81%	27.63%	26.2%	25.06%	26.32%	26.4%	20.55%	20.69%	21.4%	30.58%	25.36%	26.1%	96.84%	96.54%	94.90%
Female	24.02%	25.67%	23.7%	25.98%	26.30%	27.0%	22.55%	22.06%	22.4%	27.45%	25.96%	27.0%	96.23%	96.89%	95.23%
Male	22.01%	28.29%	26.8%	24.88%	26.55%	25.1%	18.66%	19.31%	20.3%	34.45%	25.84%	27.8%	97.66%	95.93%	94.60%

\* Results cannot be published without releasing personally identifiable information based upon the EED reporting protocol

2007-08 SBA Results Compared for Romig Middle School, District and State

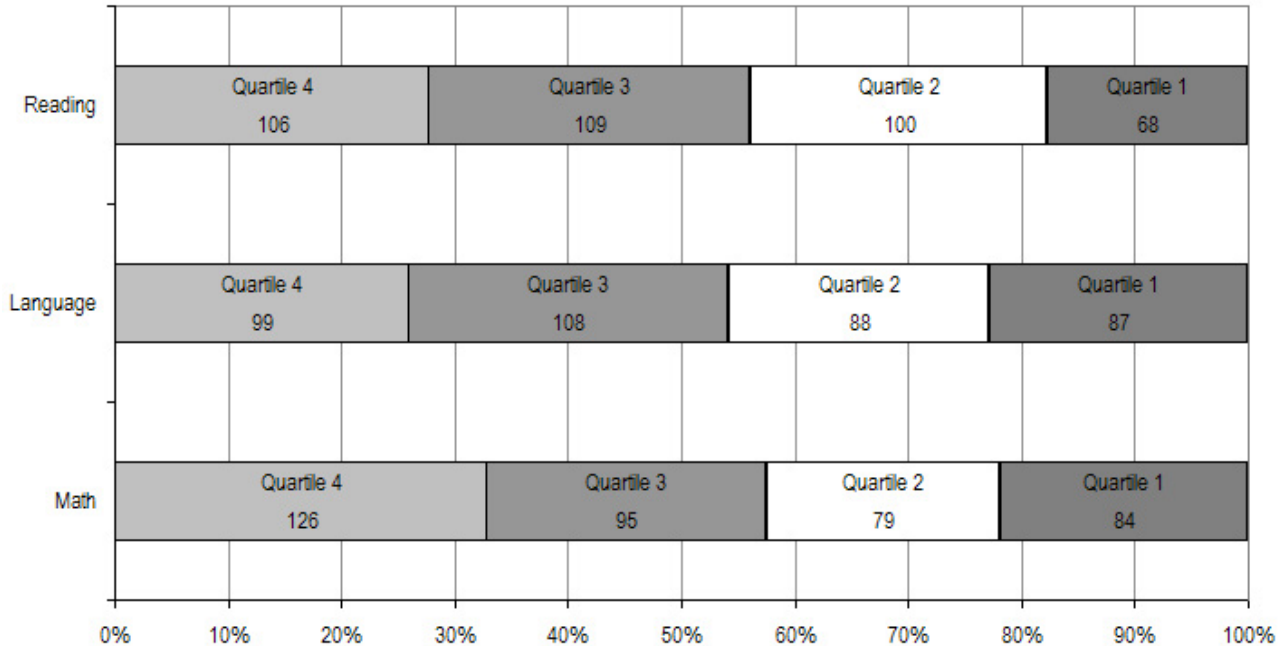


\* 2007-08 was the first year Science was administered for grades 4, 8 and 10 on the SBA.

Romig Middle School TerraNova Grade 7 Percent in Each Quartile								
Reading	Above Average		Average				Below Average	
	4th Quartile (76-99 percentile)		3rd Quartile (51-75 percentile)		2nd Quartile (26-50 percentile)		1st Quartile (1-25 percentile)	
	School	District	School	District	School	District	School	District
07-08	27.68%	30.31%	28.46%	32.50%	26.11%	24.54%	17.75%	12.66%
06-07	29.8%	35.6%	26.6%	28.0%	24.2%	21.5%	19.4%	14.9%
05-06	32.4%	34.6%	25.2%	28.4%	20.9%	21.8%	21.6%	15.3%
04-05	33.3%	33.9%	20.6%	27.1%	23.1%	21.7%	23.1%	17.4%
03-04	32.8%	35.1%	25.1%	28.2%	23.7%	21.4%	18.5%	15.3%
<b>Language</b>								
07-08	25.92%	30.26%	28.27%	29.23%	23.04%	25.08%	22.77%	15.43%
06-07	31.9%	35.4%	27.7%	28.7%	21.5%	21.5%	18.9%	14.3%
05-06	33.1%	34.9%	24.5%	28.4%	22.8%	21.4%	19.7%	15.3%
04-05	34.8%	34.4%	22.8%	28.2%	21.6%	20.5%	20.8%	16.9%
03-04	36.3%	35.3%	24.4%	28.5%	23.9%	21.7%	15.5%	14.5%
<b>Mathematics</b>								
07-08	32.81%	32.27%	24.74%	26.81%	20.57%	24.16%	21.88%	16.76%
06-07	31.4%	31.5%	26.8%	28.3%	22.8%	23.0%	19.0%	17.2%
05-06	32.6%	31.4%	24.2%	27.8%	21.5%	23.4%	21.7%	17.4%
04-05	31.8%	29.7%	23.8%	26.4%	21.8%	22.9%	22.6%	20.9%
03-04	30.1%	30.2%	27.8%	27.6%	22.4%	23.9%	19.8%	18.4%

The double bold line indicates a change from the TerraNova 2<sup>nd</sup> edition to the TerraNova 3<sup>rd</sup> edition.

2007-08 TerraNova 3rd Edition Grade 7 Percent and Count of Students in Each Quartile for Romig Middle School



**Climate Survey Results for Romig Middle School**

The Anchorage School District administered the School Climate and Connectedness Surveys in spring 2008 to students in grades 5-12, all school staff and parents/guardians of students in grades K-12. The surveys were done to provide schools with information about perceptions and experiences related to school climate for use in setting school goals and redirecting resources. In the spring of 2008 grades 3 and 4 students were involved in a pilot survey for measuring school climate and connectedness. The results are currently under review by the American Institutes for Research.

Respondents were asked to answer a series of questions that were related to a certain concept. For each item, there were five options from which to choose a response. The answer options ranged from strongly disagree (1) to strongly agree (5).

Student Survey Response Rate – Grades 5-12			
	Romig Middle School	Overall Middle Schools	District**
# Surveys Completed	680	5,722	21,629
# Reportable Surveys	590	5,021	18,508
# Students Enrolled*	825	7,188	28,945
Reportable Response Rate	71.52%	69.85%	63.94%

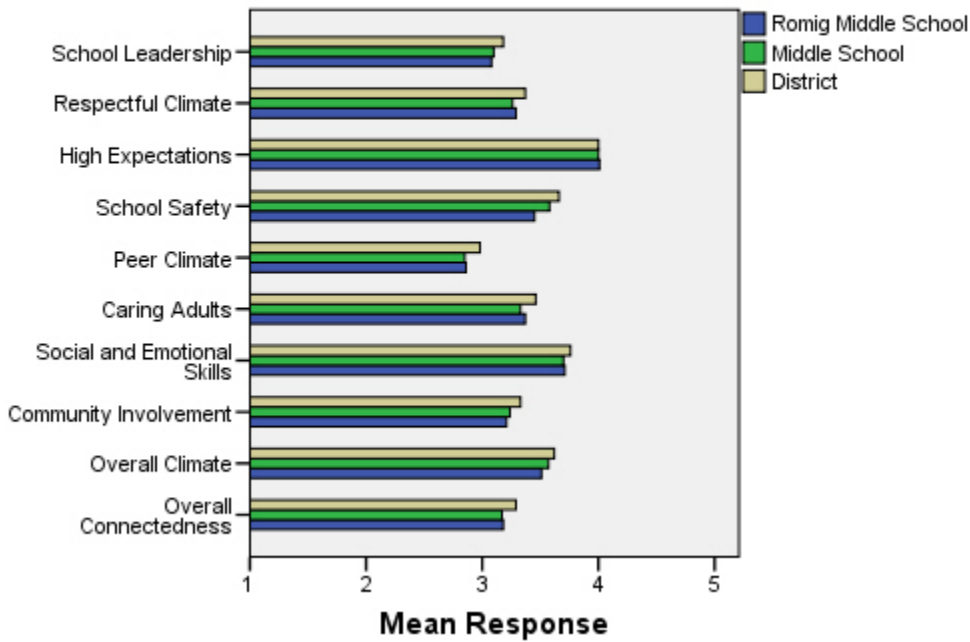
\*Number enrolled as of April 1, 2008

\*\*District data does not include KCC responses

Each question in the survey related to a factor or concept, and a score was calculated based on the mean response for the questions related to each factor. The factors measured in the survey were:

- **School Leadership and Student Involvement:** This factor reflects students' feelings about the decision making of school leaders as well as student participation in the school governance. Students selected responses between 1 and 5 where 1 indicates a low level of school leadership and student involvement and 5 indicates a high level of school leadership and student involvement.
- **Respectful Climate:** This factor reflects students' feelings about fairness of rules and respect for students' contributions. Students selected responses between 1 and 5 where 1 indicates a lack of a respectful climate and 5 indicates a highly respectful climate for students.
- **High Expectations:** This factor reflects students' feelings about their own expectations as well as those of adults in their school and community. Students selected responses between 1 and 5 where 1 indicates a lack of high expectations and 5 indicates a high level of high expectations.
- **School Safety:** This factor reflects students' feelings about bullies and gangs at school as well as general crime and violence in the community. Students selected responses between 1 and 5 where 1 indicates a low level of school safety and 5 indicates a high level of school safety.
- **Peer Climate:** This factor reflects students' feelings about how respectful students are to one another and how helpful students are to other students. Students selected responses between 1 and 5 where 1 indicates a more negative peer climate and 5 indicates a very positive peer climate at the school.
- **Caring Adults:** This factor reflects students' feelings about how close they feel to adults in the school. Students selected responses between 1 and 5 where 1 indicates a lack of caring adult relationships and 5 indicates strong caring adult relationships at the school.
- **Social and Emotional Learning:** This factor reflects students' ability to think about the consequences of their actions and to empathize with others. Students selected responses between 1 and 5 where 1 indicates that students at the school perceive themselves as having poorer social and emotional learning, and 5 indicates higher levels of social and emotional learning.
- **Community Involvement:** This factor reflects students' feelings about how supportive and welcoming the school is with parents and the community. Students selected responses between 1 and 5 where 1 indicates a less supportive and welcoming environment and 5 indicates a more supportive and welcoming environment.
- **Overall Climate:** The overall climate score was computed as the mean of three scales: school leadership, high expectations and school safety.
- **Overall Connectedness:** Overall connectedness score was computed as a mean of four scales: respectful climate, peer climate, caring adults and community involvement.

### Climate and Connectedness Student Survey - Romig



Student Survey Mean Response by Factors Related to School Climate - Overall District			
	Romig Middle School	Overall Middle Schools	District
School Leadership	3.08	3.10	3.18
Respectful Climate	3.29	3.26	3.37
High Expectations	4.01	4.00	4.00
School Safety	3.45	3.58	3.66
Peer Climate	2.86	2.85	2.98
Caring Adults	3.37	3.33	3.46
Social and Emotional Skills	3.71	3.70	3.76
Community Involvement	3.21	3.24	3.33
Overall Climate	3.51	3.57	3.62
Overall Connectedness	3.18	3.17	3.29

Range is from a low of 1 to a high of 5

Students were also asked to answer questions related to school danger. The following table provides the responses for those questions:

Student Survey Results of the School Danger Questions - Percent of Students Responding in Each Category					
	0 Times	1-2 Times	3-6 Times	7-12 Times	> 12 Times
<b>Romig Middle School</b>					
Under the influence of drugs?	62.63%	19.97%	7.51%	2.56%	7.34%
Under the influence of alcohol?	68.09%	16.38%	7.34%	3.07%	5.12%
Destroy things (vandalism)?	38.41%	30.28%	16.96%	5.36%	9.00%
Get into fights?	18.77%	33.28%	25.09%	9.90%	12.97%
Steal things?	35.45%	29.62%	15.75%	7.88%	11.30%
Threaten or bully?	25.47%	30.09%	13.68%	9.74%	21.03%
Under the influence of inhalants?	69.31%	12.76%	6.72%	3.45%	7.76%
Carry weapons?	59.49%	30.26%	4.27%	2.39%	3.59%
<b>Overall Middle Schools</b>					
Under the influence of drugs?	64.66%	18.15%	7.88%	2.73%	6.57%
Under the influence of alcohol?	68.04%	16.94%	6.71%	3.34%	4.97%
Destroy things (vandalism)?	37.30%	30.56%	16.24%	7.13%	8.77%
Get into fights?	23.45%	34.39%	22.40%	8.21%	11.55%
Steal things?	40.02%	27.06%	14.98%	8.34%	9.60%
Threaten or bully?	28.58%	25.86%	17.04%	10.29%	18.23%
Under the influence of inhalants?	67.97%	15.45%	6.70%	3.13%	6.76%
Carry weapons?	68.29%	21.26%	4.76%	1.95%	3.75%
<b>District</b>					
Under the influence of drugs?	60.45%	15.05%	9.54%	3.92%	11.04%
Under the influence of alcohol?	63.11%	16.37%	8.90%	4.43%	7.19%
Destroy things (vandalism)?	41.26%	29.47%	15.45%	5.88%	7.94%
Get into fights?	26.40%	35.20%	21.96%	7.11%	9.33%
Steal things?	44.80%	25.68%	13.81%	6.98%	8.74%
Threaten or bully?	32.21%	26.21%	16.68%	9.27%	15.63%
Under the influence of inhalants?	72.79%	14.21%	5.66%	2.48%	4.87%
Carry weapons?	69.45%	19.15%	5.34%	2.01%	4.06%

Student Survey Results of the Mean Factor Score by Ethnicity (Self-Reported)							
	AKNA/AI	AF AM	Hispanic	Asian/NH	White	Other	Multi-Ethnic
<b>Romig Middle School</b>							
School Leadership	3.25	2.83	3.03	3.28	2.96	3.11	3.00
Respectful Climate	3.41	3.08	3.39	3.38	3.25	3.24	3.19
High Expectations	4.04	3.81	4.04	4.15	3.93	3.96	4.08
School Safety	3.44	3.21	3.36	3.56	3.46	3.43	3.45
Peer Climate	2.96	2.74	2.68	3.07	2.74	2.92	2.80
Caring Adults	3.43	3.30	3.34	3.38	3.42	3.42	3.26
Social and Emotional Skills	3.71	3.56	3.78	3.82	3.69	3.69	3.62
Community Involvement	3.28	2.96	3.16	3.29	3.19	3.20	3.24
Overall Climate	3.56	3.25	3.46	3.68	3.45	3.50	3.49
Overall Connectedness	3.26	2.94	3.20	3.27	3.15	3.20	3.14
<b>Overall Middle Schools</b>							
School Leadership	3.26	2.96	3.09	3.21	3.08	3.16	3.01
Respectful Climate	3.38	3.00	3.26	3.30	3.31	3.24	3.14
High Expectations	3.98	3.87	3.96	4.02	4.04	3.97	3.94
School Safety	3.51	3.42	3.51	3.40	3.72	3.39	3.56
Peer Climate	2.93	2.69	2.79	2.95	2.86	2.80	2.82
Caring Adults	3.38	3.23	3.24	3.24	3.40	3.31	3.28
Social and Emotional Skills	3.67	3.54	3.68	3.75	3.75	3.67	3.61
Community Involvement	3.30	3.10	3.20	3.23	3.28	3.23	3.18
Overall Climate	3.58	3.43	3.54	3.55	3.62	3.52	3.52
Overall Connectedness	3.23	2.99	3.13	3.18	3.21	3.15	3.11
<b>District</b>							
School Leadership	3.33	3.14	3.19	3.28	3.14	3.17	3.15
Respectful Climate	3.48	3.18	3.32	3.39	3.39	3.37	3.33
High Expectations	3.98	3.94	3.96	4.02	4.02	4.00	4.01
School Safety	3.60	3.48	3.55	3.47	3.78	3.51	3.62
Peer Climate	3.01	2.85	2.94	3.05	3.00	2.92	2.93
Caring Adults	3.49	3.43	3.37	3.33	3.51	3.42	3.46
Social and Emotional Skills	3.73	3.66	3.73	3.81	3.78	3.75	3.74
Community Involvement	3.37	3.22	3.31	3.29	3.34	3.34	3.31
Overall Climate	3.64	3.52	3.57	3.59	3.65	3.56	3.60
Overall Connectedness	3.33	3.17	3.24	3.26	3.31	3.26	3.27

Staff Survey Response Rate			
	Romig Middle School	Overall Middle Schools	District**
# Surveys Completed	89	522	2,980
# Reportable Surveys	89	521	2,968
# Staff Members*	102	789	5,549
Reportable Response Rate	87.25%	66.03%	53.49%

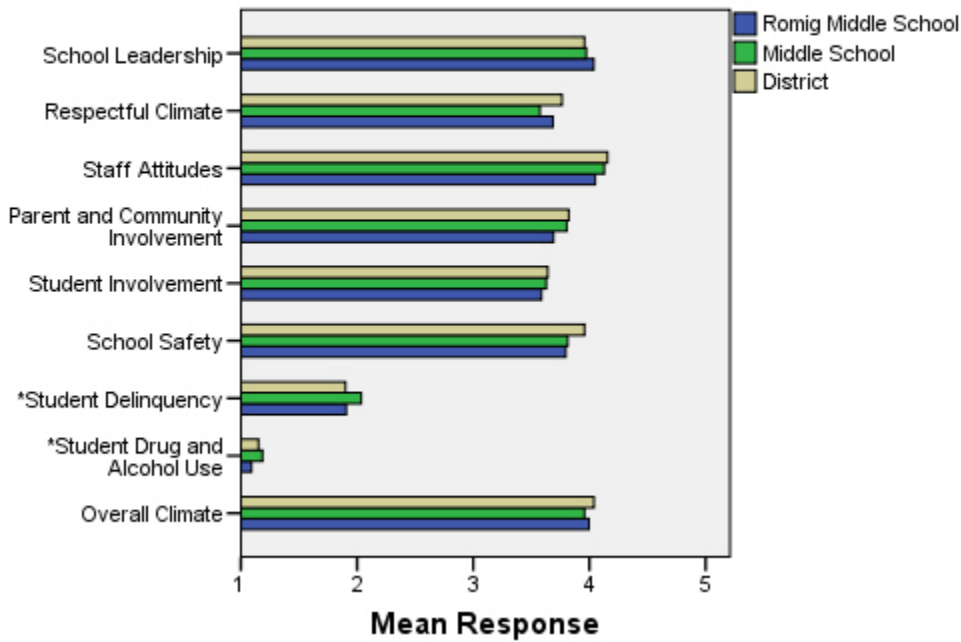
\*Number staff as of April 1, 2008

\*\*Includes KCC responses

Each question in the survey related to a factor or concept, and a score was calculated based on the mean response for the questions related to each factor. The factors were:

- **School Leadership:** This factor reflects staff members' feelings about the decision making of school leaders as well as the fairness of school rules. Staff members selected responses between 1 and 5 where 1 indicates a low level of school leadership and 5 indicates a high level of school leadership.
- **Respectful Climate:** This factor reflects staff members' feelings about how students treat each other and how well students and staff members treat one another. Staff members selected responses between 1 and 5 where 1 indicates a low level of respect and 5 indicates a high level.
- **Staff Attitudes:** This scale reflects staff members' feelings about the competence of teachers as well as how positive their attitudes are towards their jobs. Staff members selected responses between 1 and 5 where 1 indicates more negative staff attitudes and 5 indicates highly positive staff attitudes.
- **Parent and Community Involvement:** This factor reflects staff members' feelings about how accessible the school is for parents as well as how connected adults in the community are to the school. Staff members selected responses between 1 and 5 where 1 indicates a low level of parent and community involvement and 5 indicates a high level of parent and community involvement.
- **Student Involvement:** This factor reflects staff members' feeling about how involved students are in the decision making process. Staff members selected responses between 1 and 5 where 1 indicates a low level of student involvement and 5 indicates a high level of student involvement.
- **School Safety:** This factor reflects staff members' feelings about the impact of gangs and bullies as well as general crime and violence in the community. Staff members selected responses between 1 and 5 where 1 indicates a low level school safety and 5 indicates a high level of school safety.
- **Student Delinquency:** This factor uses staff members' reports of observing students getting into fights, stealing and bullying. The student delinquency and student drug and alcohol use scales differ from the other factors since the higher the score is the more negative the response. Staff members selected responses between 1 and 5 where 1 indicates a low level of student delinquency and 5 indicates a high level of student delinquency.
- **Student Drug and Alcohol Use:** This factor uses staff members' reports of observing students under the influence of drugs or alcohol. The student delinquency and student drug and alcohol use scales differ from the other factors since the higher the score is the more negative the response. Staff members selected responses between 1 and 5 where 1 indicates a low level of student drug and alcohol use and 5 indicates a high level of student drug and alcohol use.
- **Overall Climate:** Computed as the mean of 8 scales: school leadership, respectful climate, staff attitudes, parent and community involvement, student involvement, school safety, student delinquency, and drug and alcohol use scores.

### Climate and Connectedness Staff Survey - Romig



Staff Survey Mean Response by Factors Related to School Climate - Overall District			
	Romig Middle School	Overall Middle Schools	District
School Leadership	4.04	3.97	3.96
Respectful Climate	3.69	3.57	3.76
Staff Attitudes	4.05	4.13	4.16
Parent & Community Involvement	3.69	3.81	3.82
Student Involvement	3.59	3.63	3.64
School Safety	3.80	3.81	3.96
Student Delinquency*	1.91	2.04	1.90
Student Drug & Alcohol Use*	1.09	1.19	1.15
Overall Climate	4.00	3.96	4.04

Range is from a low of 1 to a high of 5

\*Student Drug and Alcohol Use and Student Delinquency factor scale scores differ from other factors since the higher the score is the more negative the response.

Staff members were also asked to answer questions related to school danger. The following table provides the responses for those questions:

Staff Survey Results of the School Danger Questions - Percent of Staff Responding in Each Category					
	0 Times	1-2 Times	3-6 Times	7-12 Times	> 12 Times
<b>Romig Middle School</b>					
Under the influence of drugs?	83.56%	13.70%	2.74%	0.00%	0.00%
Under the influence of alcohol?	94.37%	5.63%	0.00%	0.00%	0.00%
Destroy things (vandalism)?	25.35%	52.11%	14.08%	5.63%	2.82%
Get into fights?	34.25%	41.10%	20.55%	4.11%	0.00%
Steal things?	43.06%	36.11%	13.89%	2.78%	4.17%
Threaten or bully?	13.89%	40.28%	27.78%	13.89%	4.17%
Under the influence of inhalants?	92.86%	7.14%	0.00%	0.00%	0.00%
Carry weapons?	80.56%	19.44%	0.00%	0.00%	0.00%
<b>Overall Middle Schools</b>					
Under the influence of drugs?	78.08%	15.88%	3.80%	1.57%	0.67%
Under the influence of alcohol?	83.94%	14.03%	1.36%	0.45%	0.23%
Destroy things (vandalism)?	26.97%	41.57%	19.33%	7.87%	4.27%
Get into fights?	31.99%	38.03%	19.02%	6.49%	4.47%
Steal things?	37.75%	37.53%	16.18%	3.60%	4.94%
Threaten or bully?	14.64%	36.26%	25.68%	12.61%	10.81%
Under the influence of inhalants?	95.02%	4.07%	0.45%	0.23%	0.23%
Carry weapons?	83.75%	14.67%	0.90%	0.23%	0.45%
<b>District</b>					
Under the influence of drugs?	82.61%	11.54%	4.11%	1.19%	0.55%
Under the influence of alcohol?	86.69%	10.21%	2.34%	0.60%	0.16%
Destroy things (vandalism)?	38.03%	36.81%	16.05%	5.07%	4.04%
Get into fights?	35.38%	38.78%	16.46%	4.83%	4.55%
Steal things?	41.82%	37.07%	14.02%	4.28%	2.81%
Threaten or bully?	22.88%	37.15%	21.97%	8.96%	9.04%
Under the influence of inhalants?	97.27%	2.42%	0.24%	0.04%	0.04%
Carry weapons?	88.47%	10.26%	1.11%	0.08%	0.08%

Staff Survey Results of the Mean Factor Score by Ethnicity (Self-Reported)						
	AKNA/AI	AF AM	Hispanic	Asian/NH	White	Multi-Ethnic
<b>Romig Middle School</b>						
School Leadership	3.50	3.75	4.33	5.00	4.03	4.25
Respectful Climate	3.60	3.50	4.13	4.80	3.66	3.84
Staff Attitudes	3.90	3.80	4.30	5.00	4.02	4.32
Parent and Community Involvement	3.93	3.86	3.90	4.43	3.66	3.80
Student Involvement	3.67	3.00	4.22	5.00	3.55	3.73
School Safety	3.70	3.80	3.80	4.00	3.81	3.92
* Student Delinquency	1.80	2.10	1.27	1.60	1.96	1.60
* Student Drug and Alcohol Use	1.00	1.17	1.00	***	1.08	1.20
Overall Climate	3.94	3.97	4.41	***	3.97	4.13
<b>Overall Middle Schools</b>						
School Leadership	3.71	3.94	4.09	4.28	3.98	4.15
Respectful Climate	3.45	3.60	3.76	3.68	3.57	3.65
Staff Attitudes	3.88	4.03	4.20	4.18	4.13	4.24
Parent and Community Involvement	3.49	3.95	3.96	4.06	3.80	3.87
Student Involvement	3.31	3.70	4.22	4.10	3.61	3.63
School Safety	3.63	3.71	3.80	3.82	3.82	3.80
* Student Delinquency	2.11	2.67	1.60	1.92	2.03	2.03
* Student Drug and Alcohol Use	1.07	1.40	1.03	1.04	1.19	1.15
Overall Climate	3.63	3.90	4.13	4.11	3.96	4.08
<b>District</b>						
School Leadership	3.99	3.99	4.13	4.15	3.96	4.06
Respectful Climate	3.66	3.83	3.84	3.96	3.76	3.84
Staff Attitudes	4.06	4.11	4.27	4.22	4.16	4.29
Parent and Community Involvement	3.75	3.91	3.94	3.93	3.82	3.85
Student Involvement	3.62	3.67	3.85	3.88	3.64	3.72
School Safety	3.82	3.94	4.06	3.94	3.97	3.94
* Student Delinquency	1.88	1.90	1.67	1.61	1.91	2.05
* Student Drug and Alcohol Use	1.12	1.26	1.03	1.16	1.15	1.13
Overall Climate	3.96	4.04	4.20	4.18	4.04	4.09

\*Student Drug and Alcohol Use and Student Delinquency factor scale scores differ from other factors since the higher the score is the more negative the response.

\*\*Staff survey results do not include an 'Other' ethnicity category since staff in that category all chose at least one other ethnicity in addition to 'Other' and were included in the 'Multi-Ethnic' category as a result.

\*\*\*Results can not be calculated because of missing responses

Parent/Guardian Survey Response Rate			
	Romig Middle School	Overall Middle Schools	District**
# Surveys Completed	298	1,648	7,415
# Primary Guardians*	818	7,219	48,693
Response Rate	36.43%	22.83%	15.23%

\*Number students enrolled as of April 1, 2008 without dual guardians included

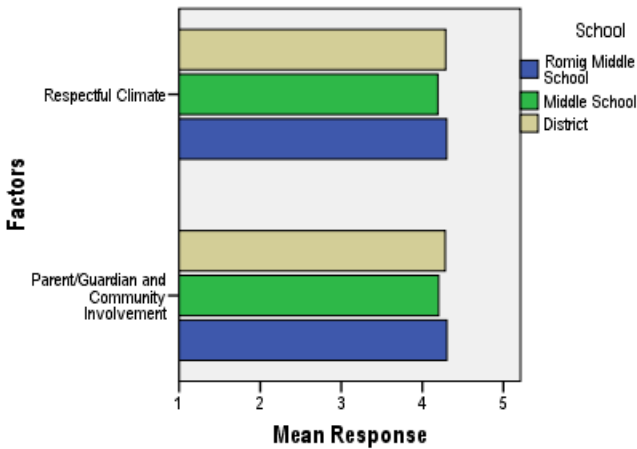
\*\*District data

- 1) does not include KCC responses;
- 2) does include responses without a school designation

Two factors are calculated from the Parent/Guardian Survey. All results other than the factor scores below are reported by individual question: questions in the graphs are condensed phrases from the full question, while questions in the tables are the full question.

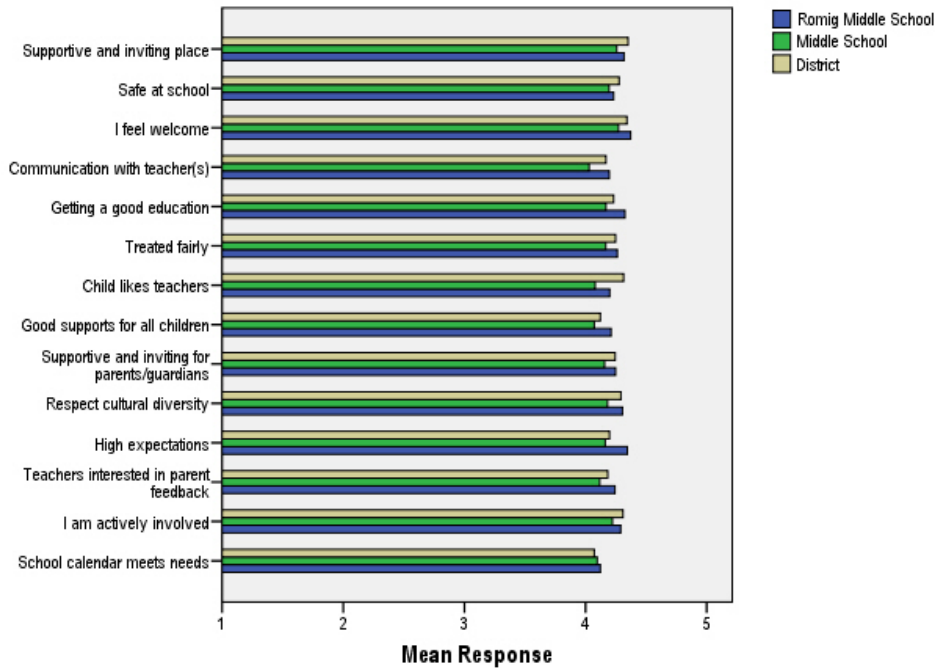
- **Respectful Climate:** This factor is calculated by determining the mean of five questions: 1) My child’s school is a supportive and inviting place, 2) I feel welcome at this school, 3) I am satisfied with communication with my child’s teacher(s), 4) This school is a supportive and inviting place for parents/guardians and 5) Adults at this school respect cultural diversity.
- **Parent/Guardian and Community Involvement:** This factor is calculated by determining the mean of five questions: 1) I feel welcome at this school, 2) This school is a supportive and inviting place for parents/guardians, 3) Adults at this school respect cultural diversity, 4) Teacher’s at my child’s school are interested in what I have to say and 5) I feel like I am actively involved in my child’s education.

**Parent/Guardian Survey Mean Factor Scores (Range is from a low of 1 to a high of 5)**



Parent/Guardian Factor Scores			
	Romig Middle School	Overall Middle Schools	District
Respectful Climate	4.30	4.19	4.29
Parent/Guardian and Community Involvement	4.30	4.20	4.28

**Climate and Connectedness Parent/Guardian Survey - Romig**



Parent/Guardian Mean Response by Questions Related to School Climate - Overall			
	Romig Middle School	Overall Middle Schools	District
My child's school is a supportive and inviting place	4.32	4.26	4.35
My child is safe at school	4.23	4.19	4.28
I feel welcome at this school	4.37	4.27	4.34
I am satisfied with communication with my child's teacher(s)	4.20	4.03	4.17
My child is getting a good education at this school	4.33	4.17	4.23
My child is treated fairly at school	4.26	4.17	4.25
My child likes his/her teachers	4.20	4.08	4.31
At this school, there are good supports for all children, including children with learning disabilities	4.21	4.07	4.12
This school is a supportive and inviting place for parents/guardians	4.25	4.16	4.24
Adults at this school respect cultural diversity	4.30	4.18	4.29
Adults at this school have high expectations of my child	4.34	4.16	4.20
Teachers at my child's school are interested in what I have to say	4.24	4.12	4.18
I feel like I am actively involved in my child's education	4.29	4.22	4.31
The district's school calendar meets the needs of my child and our family	4.12	4.10	4.07

Range is from a low of 1 to a high of 5

Parent/Guardian Mean Response by Questions Related to School Climate by Ethnicity (Self-Reported)							
Romig Middle School	AF AM	AKNA/AI	Asian/NH	White	Hispanic	ME	Other
My child's school is a supportive and inviting place	4.56	4.31	4.35	4.23	4.47	4.40	3.89
My child is safe at school	4.30	4.21	4.47	4.14	4.18	4.24	3.44
I feel welcome at this school	4.73	4.40	4.34	4.38	4.29	4.43	4.00
I am satisfied with communication with my child's teacher(s)	4.20	4.13	4.14	4.18	4.38	4.14	4.00
My child is getting a good education at this school	4.18	4.30	4.38	4.27	4.50	4.38	4.11
My child is treated fairly at school	4.09	4.10	4.30	4.27	4.47	4.19	3.67
My child likes his/her teachers	4.09	3.97	4.30	4.18	4.39	4.10	3.78
At this school, there are good supports for all children, including children with learning disabilities	4.20	4.18	4.29	4.10	4.38	4.24	3.78
This school is a supportive and inviting place for parents/guardians	4.45	4.17	4.28	4.22	4.29	4.38	3.56
Adults at this school respect cultural diversity	4.27	4.20	4.33	4.30	4.42	4.38	4.00
Adults at this school have high expectations of my child	4.20	4.20	4.33	4.36	4.50	4.48	3.67
Teachers at my child's school are interested in what I have to say	4.27	4.13	4.28	4.20	4.35	4.35	4.00
I feel like I am actively involved in my child's education	4.55	4.17	4.33	4.24	4.44	4.29	3.75
The district's school calendar meets the needs of my child and our family	4.30	4.13	4.13	4.11	4.24	4.29	3.89
<b>Overall Middle Schools</b>							
My child's school is a supportive and inviting place	4.13	4.25	4.24	4.29	4.30	4.28	4.14
My child is safe at school	4.04	4.18	4.30	4.21	4.07	4.22	3.93
I feel welcome at this school	4.07	4.33	4.22	4.31	4.19	4.31	4.23
I am satisfied with communication with my child's teacher(s)	3.80	4.03	4.05	4.04	4.13	4.06	4.00
My child is getting a good education at this school	3.93	4.19	4.18	4.19	4.24	4.20	4.19
My child is treated fairly at school	3.77	4.12	4.17	4.23	4.21	4.16	4.09
My child likes his/her teachers	3.77	4.13	4.17	4.10	4.09	4.01	4.00
At this school, there are good supports for all children, including children with learning disabilities	3.81	4.18	4.10	4.08	4.06	4.09	3.90
This school is a supportive and inviting place for parents/guardians	3.97	4.18	4.16	4.18	4.11	4.24	3.95
Adults at this school respect cultural diversity	3.85	4.10	4.10	4.26	4.07	4.24	4.19
Adults at this school have high expectations of my child	3.88	4.20	4.11	4.20	4.17	4.20	4.09
Teachers at my child's school are interested in what I have to say	3.96	4.20	4.12	4.12	4.08	4.15	4.16
I feel like I am actively involved in my child's education	4.36	4.22	4.19	4.21	4.32	4.15	4.07
The district's school calendar meets the needs of my child and our family	4.28	4.17	4.11	4.07	4.23	4.08	3.93
<b>District</b>							
My child's school is a supportive and inviting place	4.20	4.37	4.37	4.37	4.41	4.37	4.20
My child is safe at school	4.18	4.31	4.31	4.29	4.29	4.30	4.11
I feel welcome at this school	4.18	4.31	4.36	4.36	4.38	4.40	4.23
I am satisfied with communication with my child's teacher(s)	3.99	4.21	4.23	4.16	4.32	4.20	4.03
My child is getting a good education at this school	4.09	4.28	4.31	4.23	4.33	4.26	4.03
My child is treated fairly at school	3.94	4.21	4.24	4.29	4.30	4.24	4.08
My child likes his/her teachers	4.06	4.33	4.35	4.33	4.31	4.34	4.20
At this school, there are good supports for all children, including children with learning disabilities	3.90	4.19	4.23	4.11	4.24	4.18	3.97
This school is a supportive and inviting place for parents/guardians	4.05	4.21	4.29	4.26	4.31	4.31	4.05
Adults at this school respect cultural diversity	4.02	4.20	4.22	4.34	4.29	4.31	4.17
Adults at this school have high expectations of my child	4.05	4.24	4.21	4.21	4.26	4.20	3.94
Teachers at my child's school are interested in what I have to say	4.04	4.22	4.17	4.20	4.28	4.19	4.05
I feel like I am actively involved in my child's education	4.36	4.29	4.24	4.33	4.37	4.30	4.20
The district's school calendar meets the needs of my child and our family	4.18	4.19	4.16	4.06	4.21	4.02	3.66

Range is from a low of 1 to a high of 5