

Sand Lake Elementary School Overview

Statement of Program

Sand Lake Elementary is a vibrant and successfully diverse school located in southwest Anchorage on the shores of beautiful Sand Lake. Our school is home to both a traditional neighborhood program and a Japanese immersion program. During 2007-08, Sand Lake focused on expanding its program to meet the needs of an increasingly diverse and growing population. Particular emphasis was placed on ensuring success for all students through individually targeted instruction, character education and programs that motivate family involvement and investment in learning.

Our success is clearly measured by the results of the state assessments, and through active participation in our school programs. Of particular note were the cultural and educational benefits of our newly initiated Japanese internship program. In addition, student government and our three-pronged music program - Orff ensemble, chorus and Taiko drumming - continue to flourish. We are proud to announce a new partnership with Anchorage Rotary East that helps our students by bringing business leaders in to teach ethical values. Sand Lake will continue to build on these successes during 2007-08 as we look forward with optimism and a zest for learning.

From the School Report Card

School Goals

Goal	Level of Achievement
Sand Lake will continue to meet Adequate Yearly Progress requirements in accordance with the No Child Left Behind Act.	Partially Attained
The number of students rated below or far below proficiency in reading, writing and math will decrease by 10 percent.	Not Attained
Focus will be placed on the area of written expression to reduce the number of students rated below or far below proficiency on the state writing assessment to less than 10 percent.	Partially Attained

From the School Report Card

Budget*

2006-07 Actual Expenditures	\$3,175,090
2007-08 Revised Budgeted Amount	\$3,797,217
2008-09 Proposed Budget	\$4,122,430

*Dollars budgeted or expended are general fund only
From IFAS

Sand Lake Elementary School Characteristics			
	School	District	Source of Information
Membership	668	48,858	Fall OASIS
Capacity	128.02%	N/A	2008-18 ASD Capital Improvement Plan
Attendance Rate	94.46%	92.83%	NCLB Summer Data Collection
Retention Rate K-8	0.15%	0.60%	SMS and NCLB Summer Data Collection
Transiency Rate	11.13%	26.07%	NCLB Summer Data Collection
Economically Disadvantaged	126	17,717	Fall OASIS
Average Weekly Volunteer Hours	200	4,660	Department of Education Report Card Report
Students Taking the Alternate Assessment	1	228	SMS
Change in Enrollment	2.61%	-0.76%	Fall Oasis

Teacher Qualification				
Number of Teachers	Percent Fully Licensed	Percent With Advanced Degrees	Number Nationally Board Certified	Percent of Classes Taught by "Highly Qualified Teachers"
43	100.00%	39.53%	0	92.10%

Sand Lake Elementary School Business Partnerships
Tastee Freez; South Anchorage Rotary

From the School Report Card

Ethnicity Report							
African-American/Black	Alaska Native/American Indian	Asian	Native Hawaiian/Other Pacific Islander	White	Hispanic	Multi-Ethnic	Total
13	59	83	17	344	48	104	668

From Fall Oasis

Full Academic Year		
Students Enrolled	Students Enrolled for FAY	Percent FAY
662	633	95.62%

From participation file (Grades 3-10)

**Sand Lake Elementary School
2007-08 Adequate Yearly Progress
Status Report**

Meets AYP under Safe Harbor

AMO For Language Arts: 77.18%
AMO For Mathematics: 66.09%

Group	Participation Rate				"FAY" (D) Tested & Enrolled "FAY"	Language Arts Performance				Mathematics Performance			
	(A) Number Enrolled	(B) Number Tested	Participation Rate (%)	(C) Participation Rate Met		(E) Proficient on LA	(F) Percent Proficient on LA	(G) LA Target	(H) Met AMO for LA	(I) Proficient on Mathematics	(J) Percent Proficient in Mathematics	(K) Mathematics Target	(L) Met AMO for Mathematics
All Students	378	377	99.7%	Yes	365	314	86%	72.1%	Yes	302	82.7%	60.3%	Yes
AF AM	11	11	N/A	N/A	N/A	N/A	N/A	N/A	N/A	N/A	N/A	N/A	N/A
AKNA/AI	32	32	100%	Yes	32	20	62.5%	59.9%	Yes	21	65.6%	46.6%	Yes
Asian/NH/OPI	56	56	100%	Yes	50	43	86%	63.4%	Yes	43	86%	50.5%	Yes
White	205	205	100%	Yes	202	179	88.6%	70.3%	Yes	169	83.7%	58.3%	Yes
Hispanic	22	22	100%	Yes	N/A	N/A	N/A	N/A	N/A	N/A	N/A	N/A	N/A
ME	52	51	98.1%	Yes	48	45	93.8%	63.1%	Yes	43	89.6%	50.2%	Yes
EDS	70	70	100%	Yes	64	44	68.8%	65%	Yes	40	62.5%	52.3%	Yes
SWD	49	49	100%	Yes	49	27	55.1%	63.2%	Yes-SH	28	57.1%	50.3%	Yes
LEP	53	53	100%	Yes	47	34	72.3%	62.9%	Yes	32	68.1%	50%	Yes

Attendance Rate: Met

94.5% (Threshold is 85%)

N/A is used to indicate:

- (1) Subgroups with 20 or fewer students enrolled on the first day of testing shall not be included in participation rate calculation.
- (2) Subgroups with 25 or fewer students enrolled for the "full academic year" shall not have the performance score computed.

* For the groups where the number enrolled is less than or equal to 40, participation is met when no more than two miss the test. Groups can also meet this target using the average of the past two or three years.

** When a group achieves a "Yes" without meeting the listed target, it has done so using either the 99% confidence interval or Safe Harbor.

*** The results cannot be published without releasing personally identifiable information based upon the EED reporting protocol.

This document was prepared by the ASD Assessment and Evaluation Department.

7/10/2008

Sand Lake Elementary School
2007-08 Adequate Yearly Progress
Growth Report

The AYP growth reports are generated by the Alaska State Department of Education and Early Development. The reports can be found online at: http://www.asdk12.org/depts/assess_eval/AYP/State_AS_D_AYG_0708.pdf

SBA Proficiency Comparison by Grade for Sand Lake Elementary School																
	Reading Percent Proficient				Writing Percent Proficient				Mathematics Percent Proficient				Science* Percent Proficient			
	04-05	05-06	06-07	07-08	04-05	05-06	06-07	07-08	04-05	05-06	06-07	07-08	04-05	05-06	06-07	07-08
All Students	89.01%	89.83%	91.62%	87.43%	88.45%	90.40%	87.22%	84.72%	87.85%	85.92%	89.17%	82.45%	N/A	N/A	N/A	53.57%
Grade 3	96.67%	84.21%	87.50%	88.68%	93.33%	88.42%	86.36%	84.76%	95.51%	86.32%	90.91%	82.24%	N/A	N/A	N/A	N/A
Grade 4	86.59%	94.44%	92.47%	85.88%	86.59%	96.67%	89.25%	84.71%	86.59%	91.21%	88.17%	78.82%	N/A	N/A	N/A	53.57%
Grade 5	90.72%	94.87%	93.55%	86.60%	89.69%	94.87%	85.26%	83.51%	86.60%	89.74%	87.37%	82.65%	N/A	N/A	N/A	N/A
Grade 6	81.40%	86.81%	92.86%	88.37%	83.72%	82.42%	88.10%	86.05%	82.56%	76.92%	90.48%	86.05%	N/A	N/A	N/A	N/A

* 2007-08 was the first year Science was administered for grades 4, 8 and 10 on the SBA.

SBA Proficient & Not Proficient by NCLB Groups for Sand Lake Elementary School								
	Reading		Writing		Mathematics		Science**	
	Percent Proficient	Percent Not Proficient	Percent Proficient	Percent Not Proficient	Percent Proficient	Percent Not Proficient	Percent Proficient	Percent Not Proficient
All Students	87.43%	12.57%	84.72%	15.28%	82.45%	17.55%	53.57%	46.43%
AF AM	80% or more	20% or fewer	80% or more	20% or fewer	70.00%	30.00%	60% or fewer	40% or more
AKNA/AI	75.00%	25.00%	59.38%	40.63%	65.63%	34.38%	60% or fewer	40% or more
Asian	87.50%	12.50%	87.50%	12.50%	87.76%	12.24%	60.00%	40.00%
NH/OPI	60% or more	40% or fewer	42.86%	57.14%	57.14%	42.86%	*	*
White	89.71%	10.29%	87.19%	12.81%	83.41%	16.59%	60.87%	39.13%
Hispanic	81.82%	18.18%	86.36%	13.64%	81.82%	18.18%	40% or more	60% or fewer
ME	92.16%	7.84%	94.12%	5.88%	90.20%	9.80%	55.56%	44.44%
EDS	69.12%	30.88%	64.71%	35.29%	60.87%	39.13%	80% or fewer	20% or more
Non-EDS	91.50%	8.50%	89.18%	10.82%	87.30%	12.70%	61.97%	38.03%
SWD	53.85%	46.15%	51.28%	48.72%	51.28%	48.72%	44.44%	55.56%
Non-SWD	91.34%	8.66%	88.62%	11.38%	86.05%	13.95%	54.67%	45.33%
LEP	44.44%	55.56%	38.89%	61.11%	35.00%	65.00%	60% or fewer	40% or more
Not LEP	89.61%	10.39%	87.04%	12.96%	85.11%	14.89%	57.69%	42.31%
Migrant	80% or more	20% or fewer	70.59%	29.41%	76.47%	23.53%	*	*
Not Migrant	87.39%	12.61%	85.39%	14.61%	82.73%	17.27%	54.88%	45.12%
Female	89.80%	10.20%	90.77%	9.23%	85.71%	14.29%	53.85%	46.15%
Male	84.83%	15.17%	78.09%	21.91%	78.89%	21.11%	53.33%	46.67%

* Results cannot be published without releasing personally identifiable information based upon the EED reporting protocol

** 2007-08 was the first year Science was administered for grades 4, 8 and 10 on the SBA.

SBA Mean Scale Score Comparison by NCLB Groups for Sand Lake Elementary School								
	Reading		Writing		Mathematics		Science***	
	06-07	07-08	06-07	07-08	06-07	07-08	06-07	07-08
All Students	402.37	395.82	409.74	399.15	389.12	372.20	N/A	311.51
AF AM	362.60	344.30	321.91	345.40	321.18	331.00	N/A	278.60
AKNA/AI	378.49	351.69	377.07	344.13	361.83	339.47	N/A	226.67
Asian**	387.50*	388.54	395.02*	398.71	380.65*	372.71	N/A	283.30
NH/OPI**	N/A	337.29	N/A	327.43	N/A	335.86	N/A	*
White	415.60	409.26	425.44	409.67	401.12	379.29	N/A	333.30
Hispanic	409.33	384.32	426.83	396.68	406.42	360.64	N/A	337.71
ME	371.24	399.65	393.82	413.67	369.24	381.80	N/A	297.00
EDS	374.76	340.21	372.92	335.00	363.10	323.78	N/A	237.92
Non-EDS	409.20	408.17	418.95	413.45	395.63	383.08	N/A	324.99
SWD	338.74	327.79	322.85	317.18	334.94	323.72	N/A	277.78
Non-SWD	408.40	403.73	418.51	408.72	394.59	377.81	N/A	315.56
LEP	348.28	289.50	351.26	278.94	346.17	274.05	N/A	196.50
Not LEP	410.35	401.19	418.31	405.25	395.41	377.72	N/A	320.36
Migrant	410.63	388.18	403.00	373.00	378.16	350.71	N/A	*
Not Migrant	401.91	396.18	410.12	400.40	389.73	373.22	N/A	312.34
Female	405.58	401.02	423.01	414.73	386.27	373.78	N/A	307.00
Male	399.27	390.09	397.06	382.08	391.84	370.49	N/A	315.42

* Results cannot be published without releasing personally identifiable information based upon the EED reporting protocol

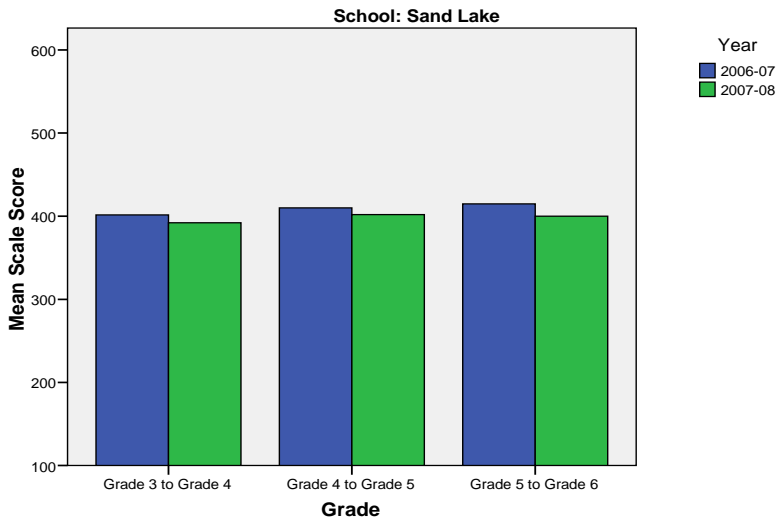
** Prior to 2007-08 the Asian category includes Native Hawaiian/Other Pacific Islander. In 2007-08 Native Hawaiian/Other Pacific Islander is a separate ethnic category.

*** 2007-08 was the first year Science was administered for grades 4, 8 and 10 on the SBA.

Sand Lake Elementary School SBA Change Average Scale Score by NCLB Groups: Reading									
	Average Scale Score of Students Tested in District Both Years			Average Scale Score of Students Tested in District Both Years			Average Scale Score of Students Tested in District Both Years		
	Grade 3 in 06-07	Grade 4 in 07-08	Difference	Grade 4-in 06-07	Grade 5 in 07-08	Difference	Grade 5-in 06-07	Grade 6 in 07-08	Difference
All Students	401.59	391.98	-9.61	409.92	401.96	-7.97	414.71	400.02	-14.69
AF AM	393.20	359.00	-34.20	*	*	*	*	*	*
AKNA/AI	319.33	295.50	-23.83	376.63	374.38	-2.25	405.50	381.67	-23.83
Asian	399.30	392.10	-7.20	381.13	375.63	-5.50	395.83	382.75	-13.08
NH/OPI	*	*	*	*	*	*	*	*	*
White	416.80	417.49	0.69	422.33	416.05	-6.27	423.63	406.46	-17.17
Hispanic	431.17	398.50	-32.67	385.83	352.50	-33.33	414.67	406.50	-8.17
ME	394.63	363.25	-31.38	425.56	411.22	-14.33	412.75	409.33	-3.42
EDS	344.79	311.86	-32.93	350.87	347.40	-3.47	371.73	364.40	-7.33
Non-EDS	413.28	408.47	-4.81	421.73	412.87	-8.87	424.19	407.88	-16.31
SWD	331.56	328.00	-3.56	346.57	356.29	9.71	311.67	274.50	-37.17
Non-SWD	410.22	399.86	-10.36	415.27	405.81	-9.46	422.74	409.81	-12.94
LEP	289.14	275.14	-14.00	*	*	*	*	*	*
Not LEP	412.08	402.88	-9.20	413.67	405.48	-8.19	416.54	402.61	-13.93
Migrant	*	*	*	*	*	*	425.60	444.20	18.60
Not Migrant	401.84	392.41	-9.42	410.40	403.00	-7.40	414.01	397.19	-16.82
Female	412.53	398.68	-13.84	416.00	403.24	-12.76	424.00	414.03	-9.97
Male	392.14	386.18	-5.95	402.33	400.35	-1.97	407.24	388.76	-18.48

* Results cannot be published without releasing personally identifiable information based upon the EED reporting protocol

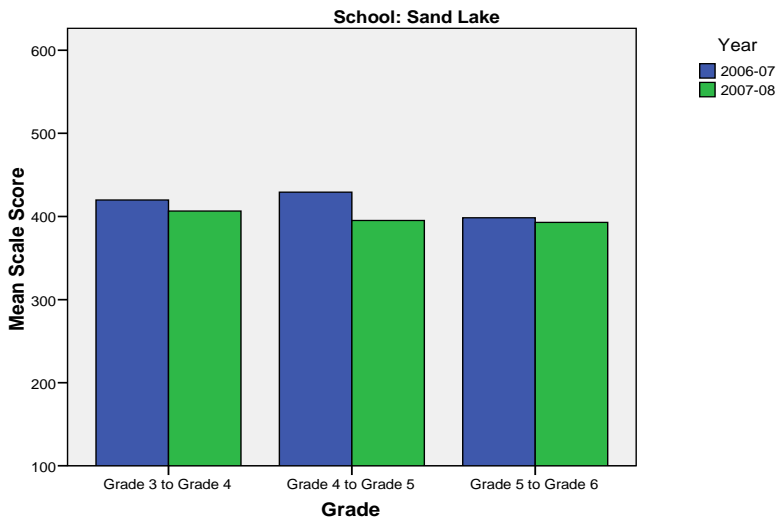
Change in Mean Scale Score in SBA Reading by Grade Between 2006-07 and 2007-08



Sand Lake Elementary School SBA Change Average Scale Score by NCLB Groups: Writing									
	Average Scale Score of Students Tested in District Both Years			Average Scale Score of Students Tested in District Both Years			Average Scale Score of Students Tested in District Both Years		
	Grade 3 in 06-07	Grade 4 in 07-08	Difference	Grade 4- in 06-07	Grade 5 in 07-08	Difference	Grade 5- in 06-07	Grade 6 in 07-08	Difference
All Students	419.80	406.56	-13.24	429.21	395.21	-34.00	398.36	392.77	-5.58
AF AM	371.00	368.80	-2.20	*	*	*	*	*	*
AKNA/AI	314.67	294.17	-20.50	388.63	355.25	-33.38	354.83	356.00	1.17
Asian	434.90	407.10	-27.80	397.13	389.63	-7.50	390.00	384.08	-5.92
NH/OPI	*	*	*	*	*	*	*	*	*
White	445.89	435.40	-10.49	440.60	401.13	-39.47	407.81	400.28	-7.53
Hispanic	416.17	410.67	-5.50	414.83	376.83	-38.00	403.67	388.67	-15.00
ME	407.13	392.00	-15.13	443.44	421.22	-22.22	401.67	404.25	2.58
EDS	339.36	323.86	-15.50	358.27	316.73	-41.53	346.47	356.60	10.13
Non-EDS	436.37	423.59	-12.78	443.40	410.91	-32.49	409.64	400.64	-9.00
SWD	307.00	332.89	25.89	333.14	309.29	-23.86	290.71	279.86	-10.86
Non-SWD	433.71	415.64	-18.07	437.31	402.46	-34.86	408.14	403.04	-5.10
LEP	247.86	263.14	15.29	*	*	*	*	*	*
Not LEP	435.85	419.95	-15.91	432.85	399.17	-33.68	400.66	395.08	-5.58
Migrant	*	*	*	*	*	*	406.00	420.60	14.60
Not Migrant	418.31	405.50	-12.81	431.55	398.94	-32.60	397.87	391.01	-6.86
Female	443.26	424.87	-18.39	444.16	408.88	-35.28	418.32	415.22	-3.11
Male	399.55	390.75	-8.80	410.53	378.13	-32.40	382.64	375.11	-7.53

* Results cannot be published without releasing personally identifiable information based upon the EED reporting protocol

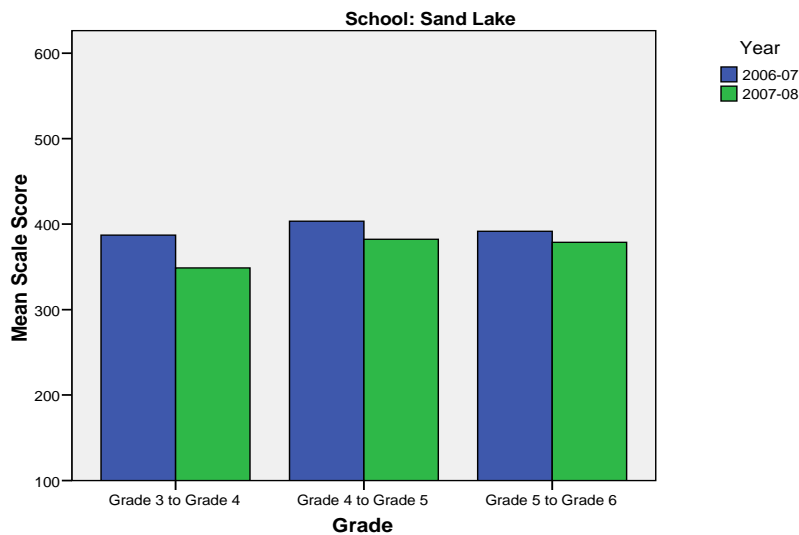
Change in Mean Scale Score in SBA Writing by Grade between 2006-07 and 2007-08



Sand Lake Elementary School SBA Change Average Scale Score by NCLB Groups: Mathematics									
	Average Scale Score of Students Tested in District Both Years			Average Scale Score of Students Tested in District Both Years			Average Scale Score of Students Tested in District Both Years		
	Grade 3 in 06-07	Grade 4 in 07-08	Difference	Grade 4- in 06-07	Grade 5 in 07-08	Difference	Grade 5- in 06-07	Grade 6 in 07-08	Difference
All Students	387.07	348.65	-38.43	403.41	382.31	-21.10	391.56	378.75	-12.81
AF AM	355.20	339.80	-15.40	*	*	*	*	*	*
AKNA/AI	327.33	311.00	-16.33	355.00	366.00	11.00	341.17	337.67	-3.50
Asian	379.80	345.50	-34.30	380.33	360.44	-19.89	406.42	391.92	-14.50
NH/OPI	*	*	*	*	*	*	*	*	*
White	405.13	360.71	-44.42	418.38	389.44	-28.95	394.36	380.60	-13.77
Hispanic	401.67	344.00	-57.67	391.67	367.50	-24.17	396.33	370.67	-25.67
ME	387.88	347.25	-40.63	403.11	382.11	-21.00	395.67	393.67	-2.00
EDS	327.07	281.57	-45.50	337.25	332.69	-4.56	351.80	343.60	-8.20
Non-EDS	399.43	362.46	-36.97	417.52	392.89	-24.63	400.20	386.39	-13.81
SWD	338.44	308.22	-30.22	356.86	341.00	-15.86	305.43	300.00	-5.43
Non-SWD	393.07	353.63	-39.44	407.29	385.75	-21.54	399.39	385.91	-13.48
LEP	275.00	236.29	-38.71	*	*	*	*	*	*
Not LEP	397.53	359.13	-38.40	408.02	386.57	-21.45	393.69	380.71	-12.98
Migrant	*	*	*	*	*	*	410.00	401.20	-8.80
Not Migrant	387.55	349.30	-38.25	406.13	384.59	-21.54	390.39	377.33	-13.06
Female	385.63	346.18	-39.45	403.48	383.82	-19.66	395.57	381.19	-14.38
Male	388.32	350.77	-37.55	403.32	380.46	-22.85	388.40	376.83	-11.57

* Results cannot be published without releasing personally identifiable information based upon the EED reporting protocol

Change in Mean Scale Score in SBA Mathematics by Grade between 2006-07 and 2007-08



Reading: SBA Results Compared for Sand Lake Elementary School, District and State Grades 3 Through 6															
	% Advanced Proficient			% Proficient			% Below Proficient			% Far Below Proficient			% Tested		
	School	District	State	School	District	State	School	District	State	School	District	State	School	District	State
All Students	48.40%	39.70%	35.67%	39.04%	43.89%	45.50%	8.82%	11.60%	13.02%	3.74%	4.80%	5.80%	98.94%	98.15%	97.98%
AF AM	*	20.73%	22.99%	80.00%	54.18%	53.49%	*	17.79%	16.46%	*	7.30%	7.06%	90.91%	98.04%	97.49%
AKNA/AI	25.00%	20.23%	14.62%	50.00%	51.11%	48.17%	15.63%	18.54%	24.83%	9.38%	10.11%	12.37%	100.00%	96.88%	97.59%
Asian	43.75%	30.22%	28.26%	43.75%	48.71%	51.04%	*	15.32%	15.32%	*	5.75%	5.38%	97.96%	97.64%	97.67%
NH/OPI	*	14.67%	N/A	57.14%	51.03%	N/A	*	24.59%	N/A	*	9.71%	N/A	100.00%	98.98%	N/A
White	54.90%	52.75%	47.28%	34.80%	38.06%	42.41%	7.84%	6.69%	7.27%	2.45%	2.50%	3.03%	99.51%	98.68%	98.28%
Hispanic	50.00%	32.35%	31.74%	31.82%	46.43%	48.60%	*	14.67%	13.66%	*	6.55%	6.00%	100.00%	97.14%	97.32%
ME	54.90%	33.26%	34.76%	37.25%	48.25%	47.75%	*	13.47%	12.80%	*	5.01%	4.70%	98.08%	98.15%	98.03%
EDS	20.59%	22.85%	21.47%	48.53%	49.71%	48.65%	19.12%	19.04%	20.31%	11.76%	8.40%	9.57%	97.14%	97.50%	96.44%
Not EDS	54.58%	51.44%	46.31%	36.93%	39.84%	43.15%	6.54%	6.42%	7.56%	1.96%	2.30%	2.98%	99.35%	98.61%	99.16%
SWD	25.64%	10.08%	9.29%	28.21%	37.10%	37.96%	25.64%	32.15%	31.20%	20.51%	20.67%	21.55%	97.50%	94.28%	93.60%
Non-SWD	51.04%	45.02%	40.09%	40.30%	45.12%	46.77%	6.87%	7.91%	9.98%	1.79%	1.95%	3.17%	99.11%	98.88%	98.75%
LEP	*	4.97%	3.12%	*	39.93%	38.06%	22.22%	37.14%	38.40%	33.33%	17.96%	20.42%	90.00%	94.25%	96.11%
Not LEP	50.56%	42.78%	39.95%	39.04%	44.25%	46.48%	8.15%	9.33%	9.68%	2.25%	3.64%	3.88%	99.44%	98.51%	98.23%
Migrant	41.18%	27.01%	17.29%	47.06%	50.34%	48.58%	*	16.44%	23.78%	*	6.21%	10.35%	100.00%	98.35%	98.50%
Not Migrant	48.74%	40.26%	36.97%	38.66%	43.61%	45.29%	8.68%	11.38%	12.26%	3.92%	4.74%	5.48%	98.89%	98.14%	97.94%
Female	51.02%	44.40%	39.45%	38.78%	43.41%	45.33%	6.63%	8.75%	10.85%	3.57%	3.44%	4.37%	100.00%	98.39%	98.31%
Male	45.51%	35.15%	32.09%	39.33%	44.37%	45.67%	11.24%	14.36%	15.08%	3.93%	6.13%	7.16%	97.80%	97.92%	97.66%

* Results cannot be published without releasing personally identifiable information based upon the EED reporting protocol

Writing: SBA Results Compared for Sand Lake Elementary School, District and State Grades 3 Through 6															
	% Advanced Proficient			% Proficient			% Below Proficient			% Far Below Proficient			% Tested		
	School	District	State	School	District	State	School	District	State	School	District	State	School	District	State
All Students	47.45%	34.87%	30.49%	37.27%	44.25%	44.50%	14.48%	18.78%	22.32%	0.80%	2.10%	2.69%	98.68%	98.11%	97.96%
AF AM	*	20.71%	20.51%	70.00%	46.71%	48.68%	*	28.71%	27.18%	*	3.88%	3.63%	90.91%	98.15%	97.71%
AKNA/AI	34.38%	17.15%	12.11%	25.00%	45.31%	41.05%	*	33.38%	40.69%	*	4.15%	6.15%	100.00%	96.51%	97.64%
Asian	43.75%	30.17%	28.49%	43.75%	45.92%	45.93%	*	21.33%	23.31%	*	2.58%	2.27%	97.96%	97.56%	97.67%
NH/OPI	*	14.02%	N/A	*	42.89%	N/A	57.14%	39.38%	N/A	*	3.71%	N/A	100.00%	99.18%	N/A
White	51.72%	45.85%	40.04%	35.47%	41.91%	44.71%	*	11.26%	13.97%	*	0.99%	1.28%	99.02%	98.66%	98.22%
Hispanic	54.55%	27.33%	27.00%	31.82%	47.25%	48.36%	*	22.54%	22.23%	*	2.88%	2.41%	100.00%	97.07%	97.36%
ME	50.98%	28.51%	29.14%	43.14%	47.68%	47.29%	*	21.31%	21.37%	*	2.51%	2.20%	98.08%	98.15%	97.96%
EDS	17.65%	18.92%	17.53%	47.06%	47.34%	45.15%	*	29.95%	32.95%	*	3.79%	4.37%	97.14%	97.50%	96.53%
Not EDS	54.10%	45.99%	40.21%	35.08%	42.10%	44.01%	*	10.99%	14.35%	*	0.92%	1.44%	99.03%	98.54%	99.06%
SWD	20.51%	7.09%	6.94%	30.77%	38.82%	37.02%	*	45.96%	47.34%	*	8.12%	8.69%	97.50%	94.28%	93.97%
Non-SWD	50.60%	39.86%	34.45%	38.02%	45.23%	45.76%	*	13.89%	18.11%	*	1.02%	1.69%	98.82%	98.83%	98.66%
LEP	*	4.71%	3.14%	33.33%	37.05%	30.66%	50.00%	50.57%	56.76%	*	7.67%	9.44%	90.00%	94.25%	96.18%
Not LEP	49.58%	37.55%	34.08%	37.46%	44.89%	46.32%	*	15.96%	17.79%	*	1.60%	1.81%	99.16%	98.47%	98.20%
Migrant	47.06%	21.44%	14.20%	23.53%	48.58%	42.55%	*	26.63%	38.57%	*	3.35%	4.68%	100.00%	98.51%	98.58%
Not Migrant	47.47%	35.46%	31.63%	37.92%	44.06%	44.64%	13.76%	18.43%	21.18%	0.84%	2.04%	2.55%	98.61%	98.09%	97.92%
Female	51.79%	42.63%	37.48%	38.97%	42.50%	43.42%	*	13.62%	17.40%	*	1.26%	1.70%	99.49%	98.32%	98.22%
Male	42.70%	27.36%	23.87%	35.39%	45.96%	45.52%	*	23.78%	26.98%	*	2.91%	3.63%	97.80%	97.90%	97.72%

* Results cannot be published without releasing personally identifiable information based upon the EED reporting protocol

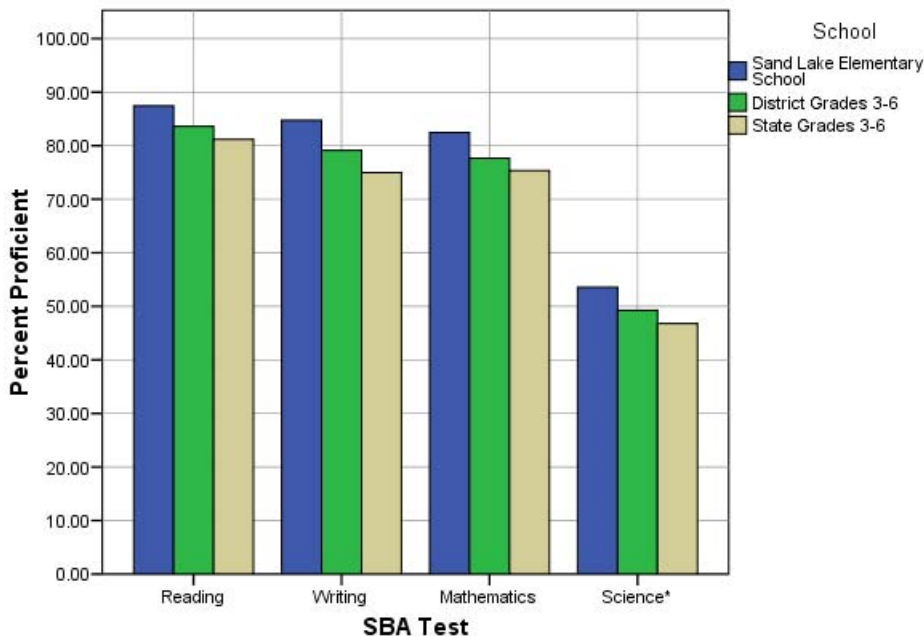
Mathematics: SBA Results Compared for Sand Lake Elementary School, District and State Grades 3 Through 6															
	% Advanced Proficient			% Proficient			% Below Proficient			% Far Below Proficient			% Tested		
	School	District	State	School	District	State	School	District	State	School	District	State	School	District	State
All Students	46.01%	39.81%	36.08%	36.44%	37.84%	39.26%	9.57%	12.46%	13.78%	7.98%	9.88%	10.88%	99.47%	98.52%	98.12%
AF AM	*	19.48%	22.09%	60.00%	40.14%	41.60%	*	20.19%	18.61%	30.00%	20.19%	17.70%	90.91%	98.38%	97.78%
AKNA/AI	34.38%	23.20%	18.26%	31.25%	39.51%	39.14%	18.75%	19.22%	21.79%	15.63%	18.07%	20.81%	100.00%	96.96%	97.72%
Asian	42.86%	37.02%	34.29%	44.90%	41.20%	41.23%	*	13.76%	14.10%	*	8.03%	10.38%	100.00%	99.27%	98.99%
NH/OPI	*	18.52%	N/A	*	38.07%	N/A	*	20.16%	N/A	*	23.25%	N/A	100.00%	99.39%	N/A
White	50.24%	51.12%	45.75%	33.17%	35.15%	38.35%	10.24%	8.41%	9.81%	6.34%	5.32%	6.09%	100.00%	98.69%	98.17%
Hispanic	36.36%	31.85%	31.11%	45.45%	40.04%	42.19%	*	15.02%	15.10%	*	13.09%	11.60%	100.00%	98.66%	98.47%
ME	52.94%	33.75%	35.45%	37.25%	41.21%	40.61%	*	13.93%	13.30%	*	11.11%	10.64%	98.08%	98.26%	98.00%
EDS	23.19%	24.26%	23.31%	37.68%	41.50%	40.98%	18.84%	17.54%	18.60%	20.29%	16.70%	17.11%	98.57%	98.14%	96.77%
Not EDS	51.14%	50.70%	45.67%	36.16%	35.28%	37.96%	7.49%	8.91%	10.16%	5.21%	5.12%	6.21%	99.68%	98.79%	99.16%
SWD	33.33%	12.52%	12.06%	17.95%	31.53%	32.14%	20.51%	23.68%	23.60%	28.21%	32.27%	32.20%	97.50%	94.19%	93.99%
Non-SWD	47.48%	44.69%	40.12%	38.58%	38.97%	40.45%	8.31%	10.46%	12.13%	5.64%	5.88%	7.30%	99.70%	99.34%	98.85%
LEP	*	8.22%	6.05%	*	36.74%	34.10%	15.00%	24.50%	27.43%	50.00%	30.54%	32.42%	100.00%	97.95%	97.56%
Not LEP	48.31%	42.73%	40.09%	36.80%	37.94%	39.95%	9.27%	11.35%	11.96%	5.62%	7.98%	8.01%	99.44%	98.57%	98.19%
Migrant	35.29%	30.94%	22.37%	41.18%	43.65%	40.27%	*	14.21%	20.36%	*	11.20%	17.00%	100.00%	98.68%	98.54%
Not Migrant	46.52%	40.21%	37.05%	36.21%	37.58%	39.19%	9.19%	12.38%	13.31%	8.08%	9.83%	10.45%	99.45%	98.51%	98.09%
Female	46.43%	41.01%	36.83%	39.29%	38.32%	39.88%	6.63%	11.59%	13.34%	7.65%	9.09%	9.96%	100.00%	98.71%	98.31%
Male	45.56%	38.66%	35.38%	33.33%	37.38%	38.67%	12.78%	13.30%	14.20%	8.33%	10.66%	11.75%	98.90%	98.34%	97.94%

* Results cannot be published without releasing personally identifiable information based upon the EED reporting protocol

Science: SBA Results Compared for Sand Lake Elementary School, District and State Grade 4															
	% Advanced Proficient			% Proficient			% Below Proficient			% Far Below Proficient			% Tested		
	School	District	State	School	District	State	School	District	State	School	District	State	School	District	State
All Students	32.14%	23.68%	22.1%	21.43%	25.57%	24.7%	33.33%	31.70%	31.3%	13.10%	19.06%	21.9%	98.28%	97.81%	95.35%
AF AM	*	9.18%	8.9%	*	18.84%	23.3%	60.00%	39.13%	38.0%	*	32.85%	29.8%	100.00%	98.57%	94.49%
AKNA/AI	*	6.54%	6.8%	*	21.50%	14.2%	50.00%	42.99%	35.2%	50.00%	28.97%	43.8%	100.00%	96.40%	94.98%
Asian	*	10.18%	13.4%	50.00%	21.40%	19.4%	*	39.30%	37.5%	*	29.12%	29.7%	100.00%	98.28%	97.39%
NH/OPI	*	6.57%	N/A	*	8.03%	N/A	*	34.31%	N/A	*	51.09%	N/A	100.00%	98.56%	N/A
White	43.48%	36.40%	32.3%	17.39%	29.08%	29.9%	*	25.33%	27.3%	*	9.19%	10.5%	100.00%	97.87%	94.97%
Hispanic	42.86%	16.17%	18.2%	*	26.15%	26.0%	*	32.08%	33.9%	*	25.61%	21.9%	90.00%	97.12%	96.39%
ME	33.33%	16.06%	18.5%	*	26.12%	26.8%	33.33%	37.47%	35.9%	*	20.34%	18.7%	100.00%	98.32%	96.90%
EDS	*	8.34%	11.0%	*	22.44%	20.1%	46.15%	38.10%	34.7%	46.15%	31.12%	34.2%	97.67%	97.73%	94.99%
Not EDS	38.03%	35.00%	31.2%	23.94%	27.88%	28.5%	30.99%	26.97%	28.5%	7.04%	10.15%	11.9%	100.00%	97.87%	95.64%
SWD	33.33%	8.38%	7.7%	*	16.38%	15.2%	*	36.57%	36.6%	33.33%	38.67%	40.5%	83.33%	93.25%	91.70%
Non-SWD	32.00%	26.43%	24.7%	22.67%	27.22%	26.4%	34.67%	30.82%	30.4%	10.67%	15.53%	18.5%	100.00%	98.68%	96.04%
LEP	*	2.00%	1.5%	*	5.14%	3.8%	*	34.00%	28.3%	66.67%	58.86%	66.5%	88.89%	96.15%	95.67%
Not LEP	34.62%	26.13%	25.2%	23.08%	27.88%	27.9%	33.33%	31.44%	31.8%	8.97%	14.55%	15.1%	100.00%	98.00%	95.30%
Migrant	*	9.70%	9.0%	*	26.87%	15.3%	*	39.55%	34.3%	*	23.88%	41.4%	100.00%	97.10%	97.32%
Not Migrant	32.93%	24.24%	23.0%	21.95%	25.51%	25.3%	31.71%	31.38%	31.1%	13.41%	18.86%	20.5%	98.21%	97.84%	95.21%
Female	23.08%	22.73%	20.8%	30.77%	25.78%	25.2%	35.90%	33.63%	32.6%	10.26%	17.87%	21.4%	100.00%	98.05%	95.43%
Male	40.00%	24.61%	23.4%	13.33%	25.36%	24.2%	31.11%	29.80%	30.1%	15.56%	20.23%	22.3%	96.67%	97.58%	95.27%

* Results cannot be published without releasing personally identifiable information based upon the EED reporting protocol

2007-08 SBA Results Compared for Sand Lake Elementary School, District and State

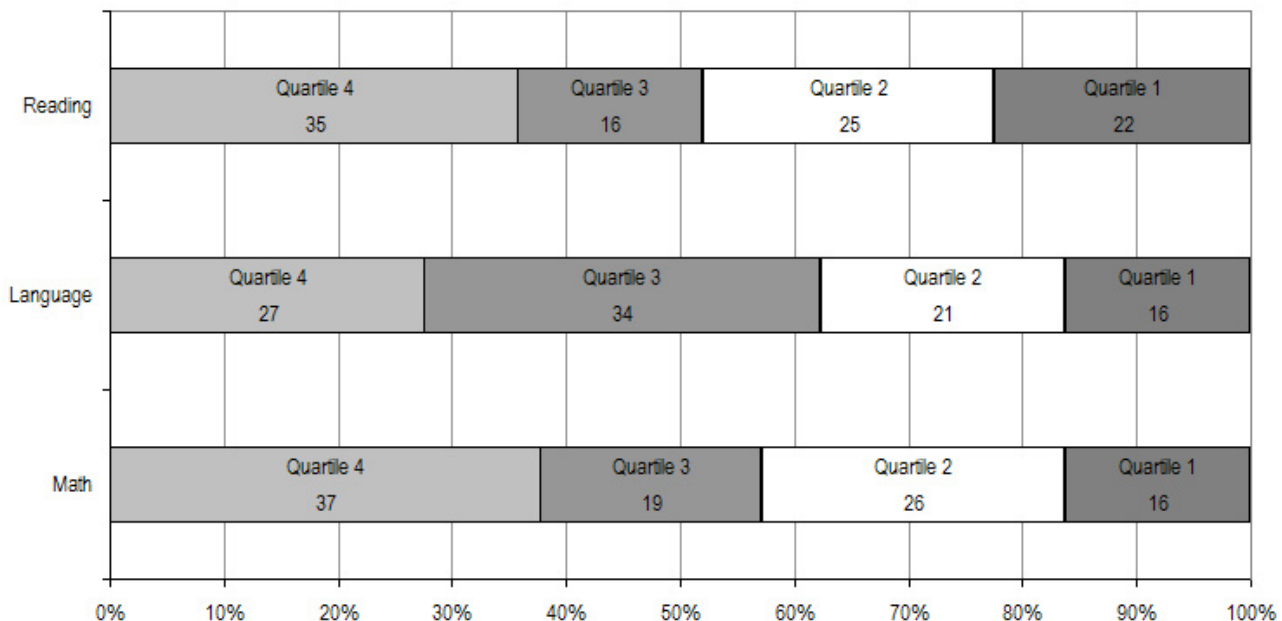


* 2007-08 was the first year Science was administered for grades 4, 8 and 10 on the SBA.

Sand Lake Elementary School TerraNova Grade 5 Percent in Each Quartile								
Reading	Above Average		Average				Below Average	
	4th Quartile (76-99 percentile)		3rd Quartile (51-75 percentile)		2nd Quartile (26-50 percentile)		1st Quartile (1-25 percentile)	
	School	District	School	District	School	District	School	District
07-08	35.71%	25.65%	16.33%	24.08%	25.51%	23.73%	22.45%	26.55%
06-07	47.4%	33.1%	23.2%	26.1%	16.8%	23.6%	12.6%	17.2%
05-06	36.4%	30.4%	41.6%	26.8%	16.9%	24.5%	5.2%	18.3%
04-05	36.5%	29.2%	31.3%	27.6%	22.9%	24.5%	9.4%	18.7%
03-04	34.8%	30.6%	30.3%	26.9%	19.1%	24.2%	15.7%	18.3%
Language								
07-08	27.55%	26.79%	34.69%	27.20%	21.43%	24.12%	16.33%	21.89%
06-07	54.7%	34.7%	21.1%	26.9%	13.7%	21.4%	10.5%	17.0%
05-06	53.2%	34.0%	22.1%	26.5%	16.9%	22.0%	7.8%	17.5%
04-05	43.8%	32.1%	30.2%	28.3%	17.7%	21.2%	8.3%	18.4%
03-04	42.7%	34.1%	23.6%	26.5%	22.5%	21.7%	11.2%	17.7%
Mathematics								
07-08	37.76%	25.45%	19.39%	26.40%	26.53%	24.47%	16.33%	23.68%
06-07	45.3%	29.7%	32.6%	31.6%	9.5%	21.2%	12.6%	17.4%
05-06	40.3%	28.4%	44.2%	31.9%	7.8%	22.3%	7.8%	17.5%
04-05	38.5%	26.9%	36.5%	31.1%	16.7%	22.9%	8.3%	19.1%
03-04	39.3%	28.3%	24.7%	29.3%	20.2%	22.6%	15.7%	19.8%

The double bold line indicates a change from the TerraNova 2nd edition to the TerraNova 3rd edition.

2007-08 TerraNova 3rd Edition Grade 5 Percent and Count of Students in Each Quartile For Sand Lake Elementary School



Climate Survey Results for Sand Lake Elementary School

The Anchorage School District administered the School Climate and Connectedness Surveys in spring 2008 to students in grades 5-12, all school staff and parents/guardians of students in grades K-12. The surveys were done to provide schools with information about perceptions and experiences related to school climate for use in setting school goals and redirecting resources. In the spring of 2008 grades 3 and 4 students were involved in a pilot survey for measuring school climate and connectedness. The results are currently under review by the American Institutes for Research.

Respondents were asked to answer a series of questions that were related to a certain concept. For each item, there were five options from which to choose a response. The answer options ranged from strongly disagree (1) to strongly agree (5).

Student Survey Response Rate Grades 5-12			
	Sand Lake Elementary School	Overall Elementary Schools	District**
# Surveys Completed	177	5,579	21,629
# Reportable Surveys	164	4,969	18,654
# Students Enrolled*	186	6,331	28,945
Reportable Response Rate	88.17%	78.49%	64.45%

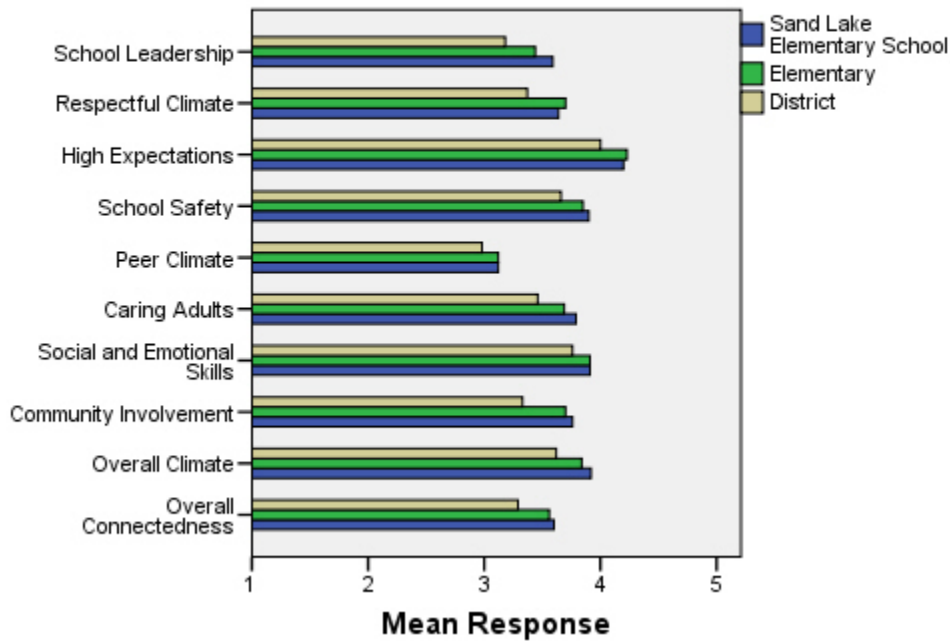
*Number enrolled as of April 1, 2008

**District data does not include KCC responses

Each question in the survey related to a factor or concept, and a score was calculated based on the mean response for the questions related to each factor. The factors measured in the survey were:

- **School Leadership and Student Involvement:** This factor reflects students' feelings about the decision making of school leaders as well as student participation in the school governance. Students selected responses between 1 and 5 where 1 indicates a low level of school leadership and student involvement and 5 indicates a high level of school leadership and student involvement.
- **Respectful Climate:** This factor reflects students' feelings about fairness of rules and respect for students' contributions. Students selected responses between 1 and 5 where 1 indicates a lack of a respectful climate and 5 indicates a highly respectful climate for students.
- **High Expectations:** This factor reflects students' feelings about their own expectations as well as those of adults in their school and community. Students selected responses between 1 and 5 where 1 indicates a lack of high expectations and 5 indicates a high level of high expectations.
- **School Safety:** This factor reflects students' feelings about bullies and gangs at school as well as general crime and violence in the community. Students selected responses between 1 and 5 where 1 indicates a low level of school safety and 5 indicates a high level of school safety.
- **Peer Climate:** This factor reflects students' feelings about how respectful students are to one another and how helpful students are to other students. Students selected responses between 1 and 5 where 1 indicates a more negative peer climate and 5 indicates a very positive peer climate at the school.
- **Caring Adults:** This factor reflects students' feelings about how close they feel to adults in the school. Students selected responses between 1 and 5 where 1 indicates a lack of caring adult relationships and 5 indicates strong caring adult relationships at the school.
- **Social and Emotional Learning:** This factor reflects students' ability to think about the consequences of their actions and to empathize with others. Students selected responses between 1 and 5 where 1 indicates that students at the school perceive themselves as having poorer social and emotional learning, and 5 indicates higher levels of social and emotional learning.
- **Community Involvement:** This factor reflects students' feelings about how supportive and welcoming the school is with parents and the community. Students selected responses between 1 and 5 where 1 indicates a less supportive and welcoming environment and 5 indicates a more supportive and welcoming environment.
- **Overall Climate:** The overall climate score was computed as the mean of three scales: school leadership, high expectations and school safety.
- **Overall Connectedness:** Overall connectedness score was computed as a mean of four scales: respectful climate, peer climate, caring adults and community involvement.

Climate and Connectedness Student Survey - Sand Lake



Student Survey Mean Response by Factors Related to School Climate - Overall District			
	Sand Lake Elementary School	Overall Elementary Schools	District
School Leadership	3.59	3.44	3.18
Respectful Climate	3.64	3.70	3.37
High Expectations	4.20	4.23	4.00
School Safety	3.90	3.85	3.66
Peer Climate	3.12	3.12	2.98
Caring Adults	3.79	3.69	3.46
Social and Emotional Skills	3.91	3.91	3.76
Community Involvement	3.76	3.70	3.33
Overall Climate	3.92	3.84	3.62
Overall Connectedness	3.60	3.56	3.29

Range is from a low of 1 to a high of 5

Students were also asked to answer questions related to school danger. The following table provides the responses for those questions:

Student Survey Results of the School Danger Questions - Percent of Students Responding in Each Category					
	0 Times	1-2 Times	3-6 Times	7-12 Times	> 12 Times
Sand Lake Elementary School					
Under the influence of drugs?	97.45%	1.91%	0.00%	0.64%	0.00%
Under the influence of alcohol?	92.99%	5.10%	1.27%	0.64%	0.00%
Destroy things (vandalism)?	39.49%	38.22%	15.29%	3.18%	3.82%
Get into fights?	21.66%	36.94%	26.11%	10.83%	4.46%
Steal things?	44.30%	32.91%	13.29%	6.33%	3.16%
Threaten or bully?	30.38%	35.44%	15.82%	6.96%	11.39%
Under the influence of inhalants?	75.32%	13.92%	6.96%	2.53%	1.27%
Carry weapons?	87.97%	9.49%	1.90%	0.00%	0.63%
Overall Elementary Schools					
Under the influence of drugs?	91.87%	5.65%	1.22%	0.31%	0.96%
Under the influence of alcohol?	91.42%	6.01%	1.16%	0.51%	0.90%
Destroy things (vandalism)?	46.82%	32.08%	12.45%	3.30%	5.36%
Get into fights?	22.32%	35.75%	22.56%	7.96%	11.41%
Steal things?	49.79%	27.92%	12.01%	4.33%	5.95%
Threaten or bully?	32.34%	28.83%	17.08%	7.78%	13.97%
Under the influence of inhalants?	71.03%	17.07%	6.14%	2.63%	3.12%
Carry weapons?	79.22%	15.35%	3.17%	0.59%	1.68%
District					
Under the influence of drugs?	60.45%	15.05%	9.54%	3.92%	11.04%
Under the influence of alcohol?	63.11%	16.37%	8.90%	4.43%	7.19%
Destroy things (vandalism)?	41.26%	29.47%	15.45%	5.88%	7.94%
Get into fights?	26.40%	35.20%	21.96%	7.11%	9.33%
Steal things?	44.80%	25.68%	13.81%	6.98%	8.74%
Threaten or bully?	32.21%	26.21%	16.68%	9.27%	15.63%
Under the influence of inhalants?	72.79%	14.21%	5.66%	2.48%	4.87%
Carry weapons?	69.45%	19.15%	5.34%	2.01%	4.06%

Student Survey Results of the Mean Factor Score by Ethnicity (Self-Reported)							
	AKNA/AI	AF AM/Black	Hispanic	Asian/NH	White	Other	Multi-Ethnic
Sand Lake Elementary School							
School Leadership	3.58	4.15	3.47	3.60	3.56	3.47	3.65
Respectful Climate	3.67	3.77	3.50	3.62	3.63	3.70	3.67
High Expectations	4.15	4.34	4.24	4.13	4.18	4.06	4.40
School Safety	3.82	3.52	2.90	4.04	4.04	3.84	3.73
Peer Climate	2.98	3.47	3.20	3.26	3.08	3.07	3.23
Caring Adults	3.45	4.20	3.60	3.46	3.88	3.85	3.95
Social and Emotional Skills	3.82	4.11	4.00	4.00	3.92	3.83	3.87
Community Involvement	3.71	4.25	3.62	3.57	3.76	3.89	3.83
Overall Climate	3.86	4.13	3.50	3.91	3.97	3.76	3.93
Overall Connectedness	3.47	4.18	3.48	3.46	3.59	3.63	3.68
Overall Elementary Schools							
School Leadership	3.56	3.50	3.52	3.55	3.37	3.44	3.42
Respectful Climate	3.75	3.60	3.66	3.72	3.71	3.69	3.63
High Expectations	4.12	4.23	4.23	4.22	4.26	4.19	4.25
School Safety	3.75	3.63	3.73	3.68	4.03	3.66	3.79
Peer Climate	3.12	2.94	3.12	3.18	3.16	3.05	3.05
Caring Adults	3.64	3.73	3.64	3.59	3.74	3.60	3.76
Social and Emotional Skills	3.86	3.84	3.91	3.95	3.93	3.90	3.89
Community Involvement	3.66	3.60	3.67	3.66	3.75	3.66	3.70
Overall Climate	3.81	3.79	3.84	3.81	3.89	3.76	3.82
Overall Connectedness	3.56	3.49	3.51	3.53	3.60	3.49	3.56
District							
School Leadership	3.33	3.14	3.19	3.28	3.14	3.17	3.15
Respectful Climate	3.48	3.18	3.32	3.39	3.39	3.37	3.33
High Expectations	3.98	3.94	3.96	4.02	4.02	4.00	4.01
School Safety	3.60	3.48	3.55	3.47	3.78	3.51	3.62
Peer Climate	3.01	2.85	2.94	3.05	3.00	2.92	2.93
Caring Adults	3.49	3.43	3.37	3.33	3.51	3.42	3.46
Social and Emotional Skills	3.73	3.66	3.73	3.81	3.78	3.75	3.74
Community Involvement	3.37	3.22	3.31	3.29	3.34	3.34	3.31
Overall Climate	3.64	3.52	3.57	3.59	3.65	3.56	3.60
Overall Connectedness	3.33	3.17	3.24	3.26	3.31	3.26	3.27

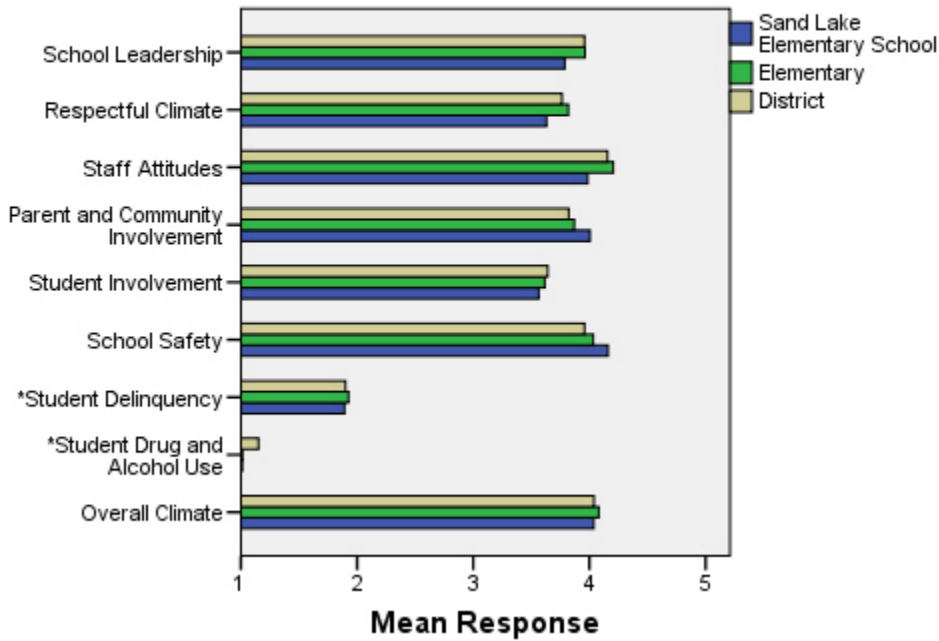
Staff Survey Response Rate			
	Sand Lake Elementary School	Overall Elementary Schools	District**
# Surveys Completed	33	1,634	2,980
# Reportable Surveys	32	1,628	2,968
# Staff Members*	58	2,967	5,549
Reportable Response Rate	55.17%	54.87%	53.49%
**			

Number staff as of April 1, 2008
Includes KCC responses

Each question in the survey related to a factor or concept, and a score was calculated based on the mean response for the questions related to each factor. The factors were:

- **School Leadership:** This factor reflects staff members' feelings about the decision making of school leaders as well as the fairness of school rules. Staff members selected responses between 1 and 5 where 1 indicates a low level of school leadership and 5 indicates a high level of school leadership.
- **Respectful Climate:** This factor reflects staff members' feelings about how students treat each other and how well students and staff members treat one another. Staff members selected responses between 1 and 5 where 1 indicates a low level of respect and 5 indicates a high level.
- **Staff Attitudes:** This scale reflects staff members' feelings about the competence of teachers as well as how positive their attitudes are towards their jobs. Staff members selected responses between 1 and 5 where 1 indicates more negative staff attitudes and 5 indicates highly positive staff attitudes.
- **Parent and Community Involvement:** This factor reflects staff members' feelings about how accessible the school is for parents as well as how connected adults in the community are to the school. Staff members selected responses between 1 and 5 where 1 indicates a low level of parent and community involvement and 5 indicates a high level of parent and community involvement.
- **Student Involvement:** This factor reflects staff members' feeling about how involved students are in the decision making process. Staff members selected responses between 1 and 5 where 1 indicates a low level of student involvement and 5 indicates a high level of student involvement.
- **School Safety:** This factor reflects staff members' feelings about the impact of gangs and bullies as well as general crime and violence in the community. Staff members selected responses between 1 and 5 where 1 indicates a low level school safety and 5 indicates a high level of school safety.
- **Student Delinquency:** This factor uses staff members' reports of observing students getting into fights, stealing and bullying. The student delinquency and student drug and alcohol use scales differ from the other factors since the higher the score is the more negative the response. Staff members selected responses between 1 and 5 where 1 indicates a low level of student delinquency and 5 indicates a high level of student delinquency.
- **Student Drug and Alcohol Use:** This factor uses staff members' reports of observing students under the influence of drugs or alcohol. The student delinquency and student drug and alcohol use scales differ from the other factors since the higher the score is the more negative the response. Staff members selected responses between 1 and 5 where 1 indicates a low level of student drug and alcohol use and 5 indicates a high level of student drug and alcohol use.
- **Overall Climate:** Computed as the mean of 8 scales: school leadership, respectful climate, staff attitudes, parent and community involvement, student involvement, school safety, student delinquency, and drug and alcohol use scores.

Climate and Connectedness Staff Survey - Sand Lake



Staff Survey Mean Response by Factors Related to School Climate - Overall District			
	Sand Lake Elementary School	Overall Elementary Schools	District
School Leadership	3.79	3.96	3.96
Respectful Climate	3.63	3.82	3.76
Staff Attitudes	3.99	4.21	4.16
Parent & Community Involvement	4.01	3.87	3.82
Student Involvement	3.56	3.61	3.64
School Safety	4.16	4.03	3.96
Student Delinquency*	1.89	1.93	1.90
Student Drug & Alcohol Use*	1.01	1.01	1.15
Overall Climate	4.04	4.08	4.04

Range is from a low of 1 to a high of 5

*Student Drug and Alcohol Use and Student Delinquency factor scale scores differ from other factors since the higher the score is the more negative the response.

Staff members were also asked to answer questions related to school danger. The following table provides the responses for those questions:

Staff Survey Results of the School Danger Questions - Percent of Staff Responding in Each Category					
	0 Times	1-2 Times	3-6 Times	7-12 Times	> 12 Times
Sand Lake Elementary School					
Under the influence of drugs?	100.00%	0.00%	0.00%	0.00%	0.00%
Under the influence of alcohol?	100.00%	0.00%	0.00%	0.00%	0.00%
Destroy things (vandalism)?	42.31%	38.46%	15.38%	0.00%	3.85%
Get into fights?	25.93%	55.56%	18.52%	0.00%	0.00%
Steal things?	18.52%	59.26%	14.81%	3.70%	3.70%
Threaten or bully?	14.81%	37.04%	40.74%	3.70%	3.70%
Under the influence of inhalants?	96.30%	3.70%	0.00%	0.00%	0.00%
Carry weapons?	96.30%	0.00%	0.00%	3.70%	0.00%
Overall Elementary Schools					
Under the influence of drugs?	98.39%	1.47%	0.15%	0.00%	0.00%
Under the influence of alcohol?	98.97%	0.96%	0.07%	0.00%	0.00%
Destroy things (vandalism)?	40.04%	37.02%	16.00%	4.13%	2.80%
Get into fights?	32.16%	38.18%	19.24%	5.58%	4.85%
Steal things?	38.65%	40.63%	13.96%	4.56%	2.20%
Threaten or bully?	20.00%	36.03%	23.38%	10.59%	10.00%
Under the influence of inhalants?	98.90%	0.95%	0.15%	0.00%	0.00%
Carry weapons?	89.94%	8.96%	1.03%	0.07%	0.00%
District					
Under the influence of drugs?	82.61%	11.54%	4.11%	1.19%	0.55%
Under the influence of alcohol?	86.69%	10.21%	2.34%	0.60%	0.16%
Destroy things (vandalism)?	38.03%	36.81%	16.05%	5.07%	4.04%
Get into fights?	35.38%	38.78%	16.46%	4.83%	4.55%
Steal things?	41.82%	37.07%	14.02%	4.28%	2.81%
Threaten or bully?	22.88%	37.15%	21.97%	8.96%	9.04%
Under the influence of inhalants?	97.27%	2.42%	0.24%	0.04%	0.04%
Carry weapons?	88.47%	10.26%	1.11%	0.08%	0.08%

Staff Survey Results of the Mean Factor Score by Ethnicity (Self-Reported)						
	AKNA/AI	AF AM/Black	Hispanic	Asian/NH	White	Multi-Ethnic
Sand Lake Elementary School						
School Leadership	4.13	***	***	3.69	3.77	4.25
Respectful Climate	3.80	***	***	3.40	3.64	4.00
Staff Attitudes	4.80	***	***	3.60	4.02	4.00
Parent and Community Involvement	4.57	***	***	4.14	4.02	3.71
Student Involvement	3.67	***	***	3.00	3.56	4.33
School Safety	4.60	***	***	3.80	4.17	5.00
* Student Delinquency	1.40	***	***	1.70	1.94	1.60
* Student Drug and Alcohol Use	1.00	***	***	1.00	1.02	1.00
Overall Climate	4.40	***	***	3.87	4.04	4.34
Overall Elementary Schools						
School Leadership	4.10	4.13	4.11	4.17	3.96	4.06
Respectful Climate	3.74	3.99	3.87	4.06	3.81	3.88
Staff Attitudes	4.15	4.23	4.30	4.24	4.21	4.31
Parent and Community Involvement	3.86	4.06	3.97	3.99	3.87	3.91
Student Involvement	3.78	3.66	3.73	3.81	3.61	3.71
School Safety	3.92	4.10	4.16	3.93	4.04	4.05
* Student Delinquency	1.79	1.61	1.65	1.54	1.97	2.13
* Student Drug and Alcohol Use	1.00	1.00	1.01	1.03	1.01	1.01
Overall Climate	4.08	4.18	4.23	4.24	4.07	4.13
District						
School Leadership	3.99	3.99	4.13	4.15	3.96	4.06
Respectful Climate	3.66	3.83	3.84	3.96	3.76	3.84
Staff Attitudes	4.06	4.11	4.27	4.22	4.16	4.29
Parent and Community Involvement	3.75	3.91	3.94	3.93	3.82	3.85
Student Involvement	3.62	3.67	3.85	3.88	3.64	3.72
School Safety	3.82	3.94	4.06	3.94	3.97	3.94
* Student Delinquency	1.88	1.90	1.67	1.61	1.91	2.05
* Student Drug and Alcohol Use	1.12	1.26	1.03	1.16	1.15	1.13
Overall Climate	3.96	4.04	4.20	4.18	4.04	4.09

*Student Drug and Alcohol Use and Student Delinquency factor scale scores differ from other factors since the higher the score is the more negative the response.

**Staff survey results do not include an 'Other' ethnicity category since staff in that category all chose at least one other ethnicity in addition to 'Other' and were included in the 'Multi-Ethnic' category as a result.

***Results can not be calculated because of missing responses

Parent/Guardian Survey Response Rate			
	Sand Lake Elementary School	Overall Elementary Schools	District**
# Surveys Completed	101	3,933	7,415
# Primary Guardians*	654	23,668	48,693
Response Rate	15.44%	16.62%	15.23%

*Number students enrolled as of April 1, 2008 without dual guardians included

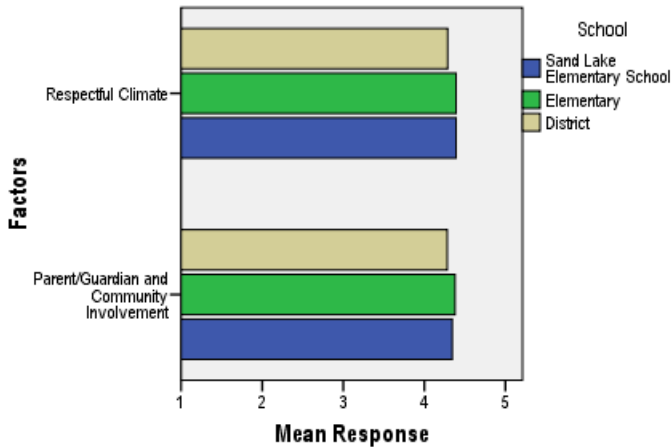
**District data

- 1) does not include KCC responses;
- 2) does include responses without a school designation

Two factors are calculated from the Parent/Guardian Survey. All results other than the factor scores below are reported by individual question: questions in the graphs are condensed phrases from the full question, while questions in the tables are the full question.

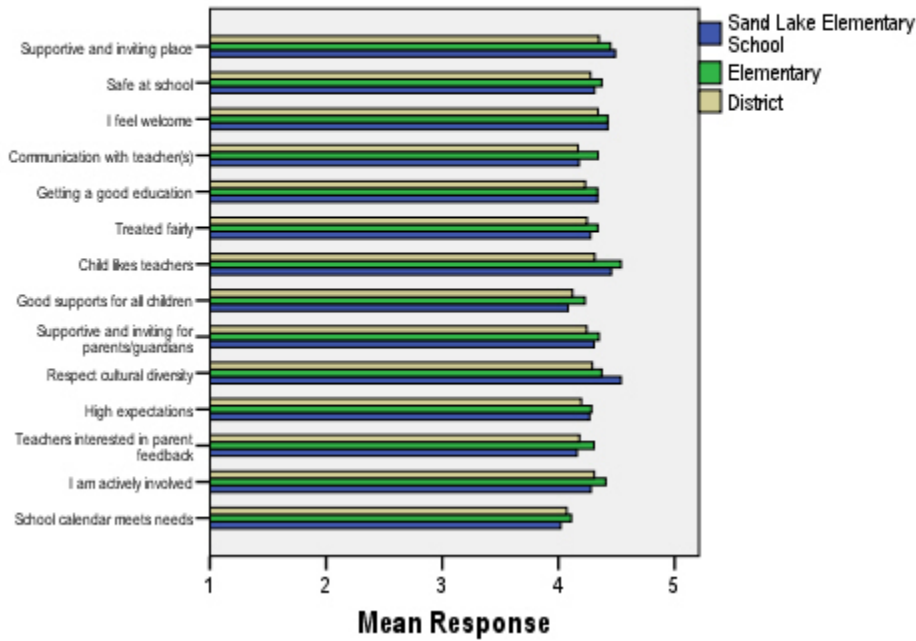
- **Respectful Climate:** This factor is calculated by determining the mean of five questions: 1) My child’s school is a supportive and inviting place, 2) I feel welcome at this school, 3) I am satisfied with communication with my child’s teacher(s), 4) This school is a supportive and inviting place for parents/guardians and 5) Adults at this school respect cultural diversity.
- **Parent/Guardian and Community Involvement:** This factor is calculated by determining the mean of five questions: 1) I feel welcome at this school, 2) This school is a supportive and inviting place for parents/guardians, 3) Adults at this school respect cultural diversity, 4) Teacher’s at my child’s school are interested in what I have to say and 5) I feel like I am actively involved in my child’s education.

Parent/Guardian Survey Mean Factor Scores (Range is from a low of 1 to a high of 5)



Parent/Guardian Factor Scores			
	Sand Lake Elementary School	Overall Elementary Schools	District
Respectful Climate	4.39	4.39	4.29
Parent/Guardian and Community Involvement	4.34	4.38	4.28

Climate and Connectedness Parent/Guardian Survey - Sand Lake



Parent/Guardian Mean Response by Questions Related to School Climate - Overall

	Sand Lake Elementary School	Overall Elementary Schools	District
My child's school is a supportive and inviting place	4.49	4.45	4.35
My child is safe at school	4.31	4.37	4.28
I feel welcome at this school	4.43	4.43	4.34
I am satisfied with communication with my child's teacher(s)	4.18	4.34	4.17
My child is getting a good education at this school	4.34	4.34	4.23
My child is treated fairly at school	4.28	4.34	4.25
My child likes his/her teachers	4.46	4.54	4.31
At this school, there are good supports for all children, including children with learning disabilities	4.08	4.23	4.12
This school is a supportive and inviting place for parents/guardians	4.31	4.35	4.24
Adults at this school respect cultural diversity	4.54	4.37	4.29
Adults at this school have high expectations of my child	4.27	4.29	4.20
Teachers at my child's school are interested in what I have to say	4.16	4.31	4.18
I feel like I am actively involved in my child's education	4.28	4.41	4.31
The district's school calendar meets the needs of my child and our family	4.02	4.11	4.07

Range is from a low of 1 to a high of 5

Parent/Guardian Mean Response by Questions Related to School Climate by Ethnicity (Self-Reported)							
Sand Lake Elementary School	AF AM	AKNA/AI	Asian/NH	White	Hispanic	ME	Other
My child's school is a supportive and inviting place	***	5.00	4.50	4.51	4.00	4.50	3.50
My child is safe at school	***	5.00	4.38	4.31	3.00	4.25	4.00
I feel welcome at this school	***	5.00	4.75	4.41	4.00	4.38	2.75
I am satisfied with communication with my child's teacher(s)	***	5.00	4.50	4.10	4.00	3.75	2.75
My child is getting a good education at this school	***	5.00	4.50	4.25	4.00	4.38	3.25
My child is treated fairly at school	***	5.00	4.56	4.20	4.00	4.25	3.00
My child likes his/her teachers	***	4.88	4.56	4.34	4.50	4.50	4.25
At this school, there are good supports for all children, including children with learning disabilities	***	5.00	4.13	4.05	4.00	3.88	3.25
This school is a supportive and inviting place for parents/guardians	***	4.75	4.63	4.29	4.00	4.38	2.25
Adults at this school respect cultural diversity	***	4.88	4.69	4.64	4.50	4.00	3.25
Adults at this school have high expectations of my child	***	4.75	4.44	4.31	4.00	4.13	2.00
Teachers at my child's school are interested in what I have to say	***	4.75	4.44	4.14	4.00	3.75	2.75
I feel like I am actively involved in my child's education	***	4.63	4.63	4.21	4.00	4.13	3.25
The district's school calendar meets the needs of my child and our family	***	4.63	4.00	4.00	4.00	3.75	3.00
Overall Elementary Schools							
My child's school is a supportive and inviting place	4.36	4.47	4.44	4.47	4.51	4.46	4.26
My child is safe at school	4.40	4.42	4.36	4.38	4.42	4.35	4.23
I feel welcome at this school	4.38	4.37	4.48	4.44	4.47	4.49	4.27
I am satisfied with communication with my child's teacher(s)	4.30	4.40	4.36	4.35	4.45	4.35	4.19
My child is getting a good education at this school	4.28	4.40	4.40	4.33	4.44	4.38	4.04
My child is treated fairly at school	4.15	4.34	4.32	4.38	4.37	4.33	4.14
My child likes his/her teachers	4.41	4.52	4.53	4.57	4.47	4.55	4.49
At this school, there are good supports for all children, including children with learning disabilities	4.06	4.32	4.31	4.22	4.31	4.31	4.05
This school is a supportive and inviting place for parents/guardians	4.22	4.31	4.38	4.36	4.42	4.44	4.11
Adults at this school respect cultural diversity	4.25	4.28	4.27	4.43	4.38	4.39	4.19
Adults at this school have high expectations of my child	4.26	4.30	4.27	4.31	4.36	4.28	3.95
Teachers at my child's school are interested in what I have to say	4.25	4.35	4.24	4.33	4.39	4.31	4.16
I feel like I am actively involved in my child's education	4.48	4.38	4.31	4.45	4.40	4.40	4.20
The district's school calendar meets the needs of my child and our family	4.25	4.22	4.19	4.10	4.20	4.08	3.62
District							
My child's school is a supportive and inviting place	4.20	4.37	4.37	4.37	4.41	4.37	4.20
My child is safe at school	4.18	4.31	4.31	4.29	4.29	4.30	4.11
I feel welcome at this school	4.18	4.31	4.36	4.36	4.38	4.40	4.23
I am satisfied with communication with my child's teacher(s)	3.99	4.21	4.23	4.16	4.32	4.20	4.03
My child is getting a good education at this school	4.09	4.28	4.31	4.23	4.33	4.26	4.03
My child is treated fairly at school	3.94	4.21	4.24	4.29	4.30	4.24	4.08
My child likes his/her teachers	4.06	4.33	4.35	4.33	4.31	4.34	4.20
At this school, there are good supports for all children, including children with learning disabilities	3.90	4.19	4.23	4.11	4.24	4.18	3.97
This school is a supportive and inviting place for parents/guardians	4.05	4.21	4.29	4.26	4.31	4.31	4.05
Adults at this school respect cultural diversity	4.02	4.20	4.22	4.34	4.29	4.31	4.17
Adults at this school have high expectations of my child	4.05	4.24	4.21	4.21	4.26	4.20	3.94
Teachers at my child's school are interested in what I have to say	4.04	4.22	4.17	4.20	4.28	4.19	4.05
I feel like I am actively involved in my child's education	4.36	4.29	4.24	4.33	4.37	4.30	4.20
The district's school calendar meets the needs of my child and our family	4.18	4.19	4.16	4.06	4.21	4.02	3.66

Range is from a low of 1 to a high of 5

***Results can not be calculated because of missing responses