

Scenic Park Elementary School Overview

Statement of Program

Scenic Park Elementary School provides a complete K-5 instructional program using Anchorage School District curriculum. We promote a safe and healthy environment where students are taught how to solve problems and make good choices. We are a community committed to the success of all learners as they become knowledgeable, responsible and caring citizens. The faculty and staff believe our success depends upon the cooperative efforts of teachers, parents, community members and students. We actively work toward developing a sense of responsibility, community and confidence in our students.

From the School Report Card

School Goals	
Goal	Level of Achievement
The number of referrals to the office for disciplinary concerns will decrease by 5 percent. Students will have an increased ability to solve problems constructively. School Climate and Connectedness Survey scores will increase in the area of respectful climate.	Partially Attained
Healthy eating habits and healthy living habits for students, staff and parents will increase.	Partially Attained
The number of students rated proficient on the state reading assessment will increase by 5 percent, allowing us to meet Adequate Yearly Progress; we will reach 80 percent reading proficiency for all grades, and have 100 percent student participation in an at-home reading program.	Partially Attained

From the School Report Card

Budget*	
2006-07 Actual Expenditures	\$2,562,253
2007-08 Revised Budgeted Amount	\$2,538,674
2008-09 Proposed Budget	\$2,759,952

*Dollars budgeted or expended are general fund only
From IFAS

Scenic Park Elementary School Characteristics			
	School	District	Source of Information
Membership	379	48,858	Fall OASIS
Capacity	77.19%	N/A	2008-18 ASD Capital Improvement Plan
Attendance Rate	93.12%	92.83%	NCLB Summer Data Collection
Retention Rate K-8	0.77%	0.60%	SMS and NCLB Summer Data Collection
Transiency Rate	23.93%	26.07%	NCLB Summer Data Collection
Economically Disadvantaged	178	17,717	Fall OASIS
Average Weekly Volunteer Hours	27	4,660	Department of Education Report Card Report
Students Taking the Alternate Assessment	1	228	SMS
Change in Enrollment	-12.47%	-0.76%	Fall Oasis

Teacher Qualification				
Number of Teachers	Percent Fully Licensed	Percent With Advanced Degrees	Number Nationally Board Certified	Percent of Classes Taught by "Highly Qualified Teachers"
31	100.00%	45.16%	2	88.88%

Scenic Park Elementary School Business Partnerships
Carrs-Safeway, Muldoon Road ; Raven Electric

From the School Report Card

Ethnicity Report							
African-American/Black	Alaska Native/American Indian	Asian	Native Hawaiian/Other Pacific Islander	White	Hispanic	Multi-Ethnic	Total
38	29	19	22	163	35	73	379

From Fall Oasis

Full Academic Year		
Students Enrolled	Students Enrolled for FAY	Percent FAY
390	344	88.21%

From participation file (Grades 3-10)

**Scenic Park Elementary School
2007-08 Adequate Yearly Progress
Status Report**

Does Not Meet AYP
Level 1

AMO For Language Arts: 77.18%
AMO For Mathematics: 66.09%

Group	Participation Rate				"FAY" (D) Tested & Enrolled "FAY"	Language Arts Performance				Mathematics Performance			
	(A) Number Enrolled	(B) Number Tested	Participation Rate (%)	(C) Participation Rate Met		(E) Proficient on LA	(F) Percent Proficient on LA	(G) LA Target	(H) Met AMO for LA	(I) Proficient on Mathematics	(J) Percent Proficient in Mathematics	(K) Mathematics Target	(L) Met AMO for Mathematics
All Students	192	191	99.5%	Yes	173	141	81.5%	69.7%	Yes	131	75.7%	57.7%	Yes
AF AM	25	24	96%	Yes	N/A	N/A	N/A	N/A	N/A	N/A	N/A	N/A	N/A
AKNA/AI	16	16	N/A	N/A	N/A	N/A	N/A	N/A	N/A	N/A	N/A	N/A	N/A
Asian/NH/OPI	18	18	N/A	N/A	N/A	N/A	N/A	N/A	N/A	N/A	N/A	N/A	N/A
White	77	77	100%	Yes	73	70	95.9%	65.7%	Yes	67	91.8%	53.2%	Yes
Hispanic	16	16	N/A	N/A	N/A	N/A	N/A	N/A	N/A	N/A	N/A	N/A	N/A
ME	40	40	100%	Yes	34	31	91.2%	60.4%	Yes	28	82.4%	47.2%	Yes
EDS	86	85	98.8%	Yes	77	55	71.4%	66%	Yes	51	66.2%	53.5%	Yes
SWD	38	38	100%	Yes	36	17	47.2%	60.9%	No	14	38.9%	47.7%	No
LEP	32	32	100%	Yes	28	18	64.3%	58.7%	Yes	17	60.7%	45.2%	Yes

Attendance Rate: Met

93.1% (Threshold is 85%)

N/A is used to indicate:

- (1) Subgroups with 20 or fewer students enrolled on the first day of testing shall not be included in participation rate calculation.
- (2) Subgroups with 25 or fewer students enrolled for the "full academic year" shall not have the performance score computed.

* For the groups where the number enrolled is less than or equal to 40, participation is met when no more than two miss the test. Groups can also meet this target using the average of the past two or three years.

** When a group achieves a "Yes" without meeting the listed target, it has done so using either the 99% confidence interval or Safe Harbor.

*** The results cannot be published without releasing personally identifiable information based upon the EED reporting protocol.

This document was prepared by the ASD Assessment and Evaluation Department.

7/10/2008

Scenic Park Elementary School
2007-08 Adequate Yearly Progress
Growth Report

The AYP growth reports are generated by the Alaska State Department of Education and Early Development. The reports can be found online at: http://www.asdk12.org/depts/assess_eval/AYP/State_AS_D_AYG_0708.pdf

SBA Proficiency Comparison by Grade for Scenic Park Elementary School																
	Reading Percent Proficient				Writing Percent Proficient				Mathematics Percent Proficient				Science* Percent Proficient			
	04-05	05-06	06-07	07-08	04-05	05-06	06-07	07-08	04-05	05-06	06-07	07-08	04-05	05-06	06-07	07-08
All Students	80.81%	80.97%	81.33%	82.20%	79.12%	82.90%	80.50%	78.95%	68.33%	75.93%	73.14%	74.87%	N/A	N/A	N/A	48.33%
Grade 3	84.00%	75.76%	74.00%	83.08%	84.00%	77.27%	72.00%	85.94%	80.00%	75.76%	78.00%	86.15%	N/A	N/A	N/A	N/A
Grade 4	87.14%	78.57%	72.86%	86.67%	92.86%	88.57%	77.14%	78.33%	80.00%	77.14%	64.29%	71.67%	N/A	N/A	N/A	48.33%
Grade 5	80.00%	83.10%	92.73%	77.27%	75.71%	83.33%	95% or more	72.73%	60.56%	76.39%	90.91%	66.67%	N/A	N/A	N/A	N/A
Grade 6	73.17%	86.89%	86.36%	N/A	65.85%	81.97%	75.76%	N/A	54.76%	74.19%	64.18%	N/A	N/A	N/A	N/A	N/A

* 2007-08 was the first year Science was administered for grades 4, 8 and 10 on the SBA.

SBA Proficient & Not Proficient by NCLB Groups for Scenic Park Elementary School								
	Reading		Writing		Mathematics		Science**	
	Percent Proficient	Percent Not Proficient	Percent Proficient	Percent Not Proficient	Percent Proficient	Percent Not Proficient	Percent Proficient	Percent Not Proficient
All Students	82.20%	17.80%	78.95%	21.05%	74.87%	25.13%	48.33%	51.67%
AF AM	58.33%	41.67%	41.67%	58.33%	41.67%	58.33%	*	*
AKNA/AI	76.47%	23.53%	75.00%	25.00%	64.71%	35.29%	*	*
Asian	62.50%	37.50%	62.50%	37.50%	62.50%	37.50%	*	*
NH/OPI	60.00%	40.00%	60.00%	40.00%	60.00%	40.00%	60% or fewer	40% or more
White	96.10%	3.90%	93.51%	6.49%	90.91%	9.09%	64.00%	36.00%
Hispanic	73.33%	26.67%	66.67%	33.33%	53.33%	46.67%	*	*
ME	85.00%	15.00%	87.50%	12.50%	82.50%	17.50%	56.25%	43.75%
EDS	71.43%	28.57%	67.86%	32.14%	64.29%	35.71%	37.93%	62.07%
Non-EDS	90.65%	9.35%	87.74%	12.26%	83.18%	16.82%	58.06%	41.94%
SWD	44.12%	55.88%	47.06%	52.94%	35.29%	64.71%	60% or fewer	40% or more
Non-SWD	90.45%	9.55%	85.90%	14.10%	83.44%	16.56%	50.94%	49.06%
LEP	41.18%	58.82%	35.29%	64.71%	41.18%	58.82%	75% or fewer	25% or more
Not LEP	86.21%	13.79%	83.24%	16.76%	78.16%	21.84%	53.85%	46.15%
Migrant	80% or more	20% or fewer	80% or more	20% or fewer	80% or more	20% or fewer	*	*
Not Migrant	81.67%	18.33%	78.77%	21.23%	73.89%	26.11%	48.28%	51.72%
Female	83.51%	16.49%	79.38%	20.62%	73.20%	26.80%	50.00%	50.00%
Male	80.85%	19.15%	78.49%	21.51%	76.60%	23.40%	46.43%	53.57%

* Results cannot be published without releasing personally identifiable information based upon the EED reporting protocol

** 2007-08 was the first year Science was administered for grades 4, 8 and 10 on the SBA.

SBA Mean Scale Score Comparison by NCLB Groups for Scenic Park Elementary School								
	Reading		Writing		Mathematics		Science***	
	06-07	07-08	06-07	07-08	06-07	07-08	06-07	07-08
All Students	366.67	373.03	375.35	373.96	351.15	353.97	N/A	286.50
AF AM	324.60	324.33	330.10	310.79	304.10	298.13	N/A	*
AKNA/AI	332.73	362.12	339.43	369.06	313.55	340.06	N/A	*
Asian**	352.13*	347.63	367.81*	337.25	334.50*	331.88	N/A	*
NH/OPI**	N/A	339.90	N/A	343.70	N/A	309.90	N/A	224.20
White	392.26	401.23	402.61	405.70	374.82	385.03	N/A	316.68
Hispanic	356.92	349.20	363.92	338.53	327.75	321.93	N/A	*
ME	359.31	374.90	364.72	380.90	362.05	361.05	N/A	280.44
EDS	340.01	352.62	343.91	346.79	320.66	333.45	N/A	270.28
Non-EDS	382.85	389.06	394.42	395.49	369.85	370.07	N/A	301.68
SWD	298.57	305.71	312.16	301.24	287.20	288.38	N/A	265.29
Non-SWD	381.88	387.61	389.46	389.81	365.76	368.17	N/A	289.30
LEP	327.18	309.94	342.35	293.82	316.44	292.29	N/A	219.25
Not LEP	373.16	379.20	380.77	381.83	356.82	359.99	N/A	296.85
Migrant	342.73	398.55	353.18	389.64	311.50	389.27	N/A	*
Not Migrant	367.82	371.47	376.41	372.99	353.22	351.81	N/A	287.17
Female	372.73	378.68	389.71	385.43	358.92	353.68	N/A	282.56
Male	359.92	367.20	359.35	361.99	342.57	354.27	N/A	291.00

* Results cannot be published without releasing personally identifiable information based upon the EED reporting protocol

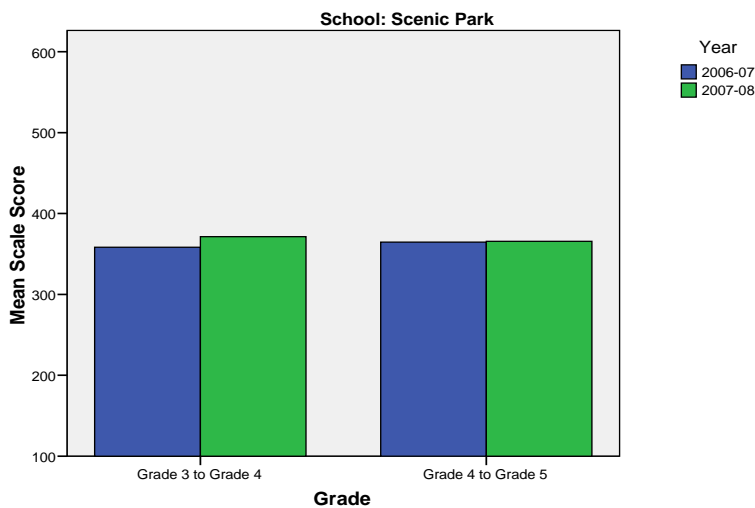
** Prior to 2007-08 the Asian category includes Native Hawaiian/Other Pacific Islander. In 2007-08 Native Hawaiian/Other Pacific Islander is a separate ethnic category.

*** 2007-08 was the first year Science was administered for grades 4, 8 and 10 on the SBA.

Scenic Park Elementary School SBA Change Average Scale Score by NCLB Groups: Reading						
	Average Scale Score of Students Tested in District Both Years			Average Scale Score of Students Tested in District Both Years		
	Grade 3 in 06-07	Grade 4 in 07-08	Difference	Grade 4-in 06-07	Grade 5 in 07-08	Difference
All Students	358.33	371.40	13.08	364.71	365.60	0.89
AF AM	*	*	*	312.15	308.85	-3.31
AKNA/AI	*	*	*	337.14	361.86	24.71
Asian	*	*	*	*	*	*
NH/OPI	*	*	*	*	*	*
White	382.10	405.85	23.75	408.17	400.50	-7.67
Hispanic	*	*	*	*	*	*
ME	366.60	365.93	-0.67	357.36	356.09	-1.27
EDS	347.27	352.15	4.88	328.60	333.40	4.80
Non-EDS	369.38	390.65	21.27	387.28	385.73	-1.55
SWD	308.29	332.43	24.14	292.53	289.40	-3.13
Non-SWD	366.11	377.47	11.36	386.36	388.46	2.10
LEP	266.00	286.43	20.43	*	*	*
Not LEP	372.69	384.62	11.93	371.00	369.89	-1.11
Migrant	*	*	*	385.20	382.40	-2.80
Not Migrant	358.30	371.18	12.88	363.00	364.20	1.20
Female	366.83	374.76	7.93	373.44	376.32	2.88
Male	347.61	367.17	19.57	355.13	353.84	-1.29

* Results cannot be published without releasing personally identifiable information based upon the EED reporting protocol

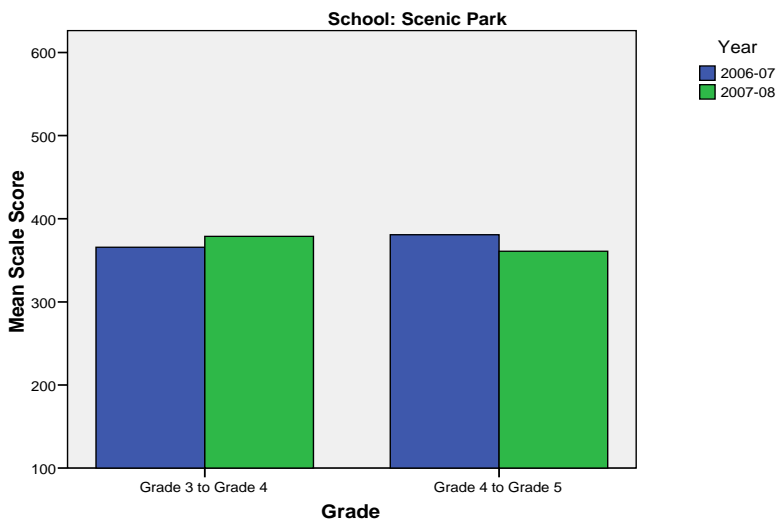
Change in Mean Scale Score in SBA Reading by Grade Between 2006-07 and 2007-08



Scenic Park Elementary School SBA Change Average Scale Score by NCLB Groups: Writing						
	Average Scale Score of Students Tested in District Both Years			Average Scale Score of Students Tested in District Both Years		
	Grade 3 in 06-07	Grade 4 in 07-08	Difference	Grade 4-in 06-07	Grade 5 in 07-08	Difference
All Students	365.65	378.81	13.15	380.75	361.00	-19.75
AF AM	*	*	*	315.46	300.85	-14.62
AKNA/AI	*	*	*	356.86	348.43	-8.43
Asian	*	*	*	*	*	*
NH/OPI	*	*	*	*	*	*
White	391.10	412.25	21.15	432.08	407.96	-24.13
Hispanic	*	*	*	*	*	*
ME	367.93	382.40	14.47	383.36	351.82	-31.55
EDS	344.23	355.19	10.96	338.28	313.92	-24.36
Non-EDS	387.08	402.42	15.35	407.30	390.43	-16.88
SWD	311.14	341.14	30.00	291.27	275.60	-15.67
Non-SWD	374.13	384.67	10.53	407.60	386.62	-20.98
LEP	289.57	270.14	-19.43	*	*	*
Not LEP	377.49	395.71	18.22	386.40	367.05	-19.35
Migrant	*	*	*	412.20	335.60	-76.60
Not Migrant	365.08	376.94	11.86	378.13	363.12	-15.02
Female	383.90	393.03	9.14	399.15	373.62	-25.53
Male	342.65	360.87	18.22	360.58	347.16	-13.42

* Results cannot be published without releasing personally identifiable information based upon the EED reporting protocol

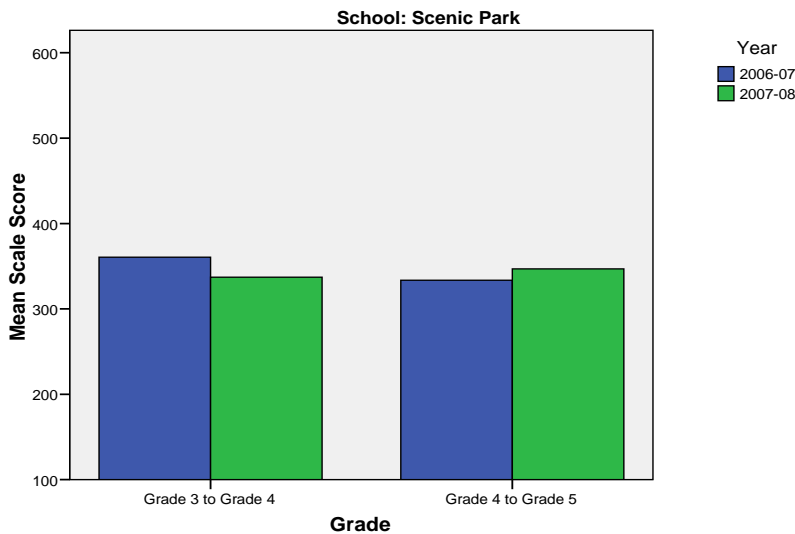
Change in Mean Scale Score in SBA Writing by Grade between 2006-07 and 2007-08



Scenic Park Elementary School SBA Change Average Scale Score by NCLB Groups: Mathematics						
	Average Scale Score of Students Tested in District Both Years			Average Scale Score of Students Tested in District Both Years		
	Grade 3 in 06-07	Grade 4 in 07-08	Difference	Grade 4-in 06-07	Grade 5 in 07-08	Difference
All Students	360.62	337.13	-23.48	333.55	346.86	13.31
AF AM	*	*	*	284.31	277.69	-6.62
AKNA/AI	*	*	*	305.57	333.00	27.43
Asian	*	*	*	*	*	*
NH/OPI	*	*	*	*	*	*
White	391.50	361.70	-29.80	377.83	401.13	23.29
Hispanic	*	*	*	*	*	*
ME	375.87	351.80	-24.07	324.55	337.82	13.27
EDS	337.62	316.69	-20.92	308.96	321.96	13.00
Non-EDS	383.62	357.58	-26.04	348.93	362.43	13.50
SWD	312.86	305.43	-7.43	248.27	256.67	8.40
Non-SWD	368.04	342.07	-25.98	359.14	373.92	14.78
LEP	267.00	261.00	-6.00	*	*	*
Not LEP	375.18	348.98	-26.20	337.85	351.71	13.85
Migrant	*	*	*	347.80	377.40	29.60
Not Migrant	360.50	335.92	-24.58	332.37	344.32	11.95
Female	367.24	343.24	-24.00	339.74	351.56	11.82
Male	352.26	329.43	-22.83	326.77	341.71	14.94

* Results cannot be published without releasing personally identifiable information based upon the EED reporting protocol

Change in Mean Scale Score in SBA Mathematics by Grade between 2006-07 and 2007-08



Reading: SBA Results Compared for Scenic Park Elementary School, District and State Grades 3 Through 5															
	% Advanced Proficient			% Proficient			% Below Proficient			% Far Below Proficient			% Tested		
	School	District	State	School	District	State	School	District	State	School	District	State	School	District	State
All Students	32.98%	38.80%	35.15%	49.21%	44.49%	46.15%	13.61%	11.10%	11.99%	4.19%	5.62%	6.71%	99.48%	98.09%	97.93%
AF AM	*	20.90%	22.92%	50.00%	54.33%	54.15%	33.33%	16.72%	14.82%	*	8.05%	8.10%	96.00%	98.03%	97.12%
AKNA/AI	23.53%	18.94%	14.26%	52.94%	51.63%	49.39%	*	17.82%	22.50%	*	11.61%	13.85%	100.00%	96.46%	97.50%
Asian	*	30.19%	28.49%	37.50%	49.61%	51.48%	37.50%	14.03%	13.97%	*	6.17%	6.07%	100.00%	97.59%	97.81%
NH/OPI	*	13.99%	N/A	40.00%	51.81%	N/A	30.00%	22.80%	N/A	*	11.40%	N/A	100.00%	98.97%	N/A
White	46.75%	51.96%	46.75%	49.35%	38.47%	42.79%	*	6.62%	6.85%	*	2.95%	3.61%	100.00%	98.60%	98.21%
Hispanic	26.67%	31.00%	30.72%	46.67%	47.34%	49.30%	*	13.71%	12.50%	*	7.95%	7.48%	93.75%	97.28%	97.55%
ME	32.50%	32.16%	33.80%	52.50%	49.00%	48.48%	*	12.77%	12.05%	*	6.07%	5.67%	100.00%	98.17%	98.10%
EDS	25.00%	22.27%	21.16%	46.43%	50.15%	49.27%	23.81%	18.08%	18.77%	4.76%	9.50%	10.80%	97.67%	97.43%	96.36%
Not EDS	39.25%	50.76%	46.00%	51.40%	40.39%	43.74%	5.61%	6.05%	6.73%	3.74%	2.80%	3.53%	100.00%	98.57%	99.19%
SWD	*	10.21%	9.67%	*	37.67%	39.08%	38.24%	29.25%	27.60%	17.65%	22.87%	23.65%	97.14%	94.47%	93.77%
Non-SWD	38.85%	44.17%	39.59%	51.59%	45.77%	47.39%	*	7.68%	9.27%	*	2.37%	3.75%	100.00%	98.80%	98.69%
LEP	*	5.09%	3.35%	*	41.59%	40.38%	41.18%	33.74%	34.02%	17.65%	19.58%	22.26%	100.00%	94.56%	96.31%
Not LEP	35.06%	41.95%	39.46%	51.15%	44.76%	46.94%	10.92%	8.98%	9.00%	2.87%	4.31%	4.60%	99.43%	98.43%	98.16%
Migrant	54.55%	26.96%	16.81%	36.36%	50.69%	50.33%	*	15.21%	21.48%	*	7.14%	11.38%	100.00%	98.19%	98.58%
Not Migrant	31.67%	39.30%	36.42%	50.00%	44.22%	45.86%	13.89%	10.92%	11.33%	4.44%	5.55%	6.38%	99.45%	98.09%	97.89%
Female	37.11%	43.50%	38.97%	46.39%	43.85%	45.87%	13.40%	8.59%	10.11%	3.09%	4.06%	5.05%	98.98%	98.39%	98.32%
Male	28.72%	34.24%	31.53%	52.13%	45.11%	46.43%	13.83%	13.53%	13.77%	5.32%	7.13%	8.28%	100.00%	97.80%	97.57%

* Results cannot be published without releasing personally identifiable information based upon the EED reporting protocol

Writing: SBA Results Compared for Scenic Park Elementary School, District and State Grades 3 Through 5															
	% Advanced Proficient			% Proficient			% Below Proficient			% Far Below Proficient			% Tested		
	School	District	State	School	District	State	School	District	State	School	District	State	School	District	State
All Students	31.58%	34.51%	30.24%	47.37%	45.08%	45.63%	*	18.89%	22.15%	*	1.52%	1.98%	98.96%	98.02%	97.92%
AF AM	*	20.43%	20.32%	33.33%	49.23%	50.69%	58.33%	28.17%	26.43%	*	2.17%	2.56%	96.00%	98.03%	97.31%
AKNA/AI	37.50%	16.36%	12.10%	37.50%	46.11%	42.81%	*	33.84%	40.71%	*	3.68%	4.38%	100.00%	96.07%	97.57%
Asian	*	30.56%	29.00%	37.50%	47.30%	46.59%	37.50%	21.24%	23.29%	*	0.90%	1.12%	100.00%	97.48%	97.81%
NH/OPI	*	14.47%	N/A	40.00%	42.38%	N/A	40.00%	41.09%	N/A	*	2.07%	N/A	100.00%	99.23%	N/A
White	40.26%	45.26%	39.61%	53.25%	42.70%	45.65%	*	11.23%	13.71%	*	0.81%	1.04%	100.00%	98.60%	98.19%
Hispanic	20.00%	27.41%	27.03%	46.67%	47.55%	48.86%	*	22.68%	22.06%	*	2.36%	2.05%	93.75%	97.03%	97.38%
ME	35.00%	28.71%	29.01%	52.50%	48.31%	48.35%	*	21.12%	21.04%	*	1.86%	1.60%	100.00%	98.17%	97.95%
EDS	20.24%	19.04%	17.80%	47.62%	48.16%	46.23%	*	30.16%	32.75%	*	2.64%	3.22%	97.67%	97.39%	96.46%
Not EDS	40.57%	45.71%	39.91%	47.17%	42.85%	45.16%	*	10.72%	13.92%	*	0.72%	1.01%	100.00%	98.49%	99.09%
SWD	*	7.72%	7.77%	41.18%	41.17%	39.74%	52.94%	45.78%	46.67%	*	5.33%	5.82%	97.14%	94.25%	94.11%
Non-SWD	37.18%	39.54%	34.18%	48.72%	45.82%	46.66%	*	13.83%	17.85%	*	0.81%	1.30%	99.36%	98.77%	98.62%
LEP	*	4.54%	3.43%	23.53%	39.98%	33.56%	64.71%	50.83%	56.79%	*	4.65%	6.21%	100.00%	94.46%	96.40%
Not LEP	33.53%	37.31%	33.88%	49.71%	45.56%	47.27%	*	15.90%	17.45%	*	1.23%	1.40%	98.86%	98.37%	98.14%
Migrant	36.36%	22.81%	14.35%	45.45%	49.08%	44.71%	*	25.81%	37.78%	*	2.30%	3.16%	100.00%	98.19%	98.74%
Not Migrant	31.28%	35.01%	31.35%	47.49%	44.91%	45.70%	*	18.59%	21.06%	*	1.49%	1.89%	98.90%	98.02%	97.87%
Female	41.24%	42.32%	37.21%	38.14%	42.91%	44.32%	*	13.87%	17.33%	*	0.90%	1.14%	98.98%	98.34%	98.21%
Male	21.51%	26.95%	23.64%	56.99%	47.19%	46.87%	*	23.74%	26.72%	*	2.12%	2.77%	98.94%	97.73%	97.65%

* Results cannot be published without releasing personally identifiable information based upon the EED reporting protocol

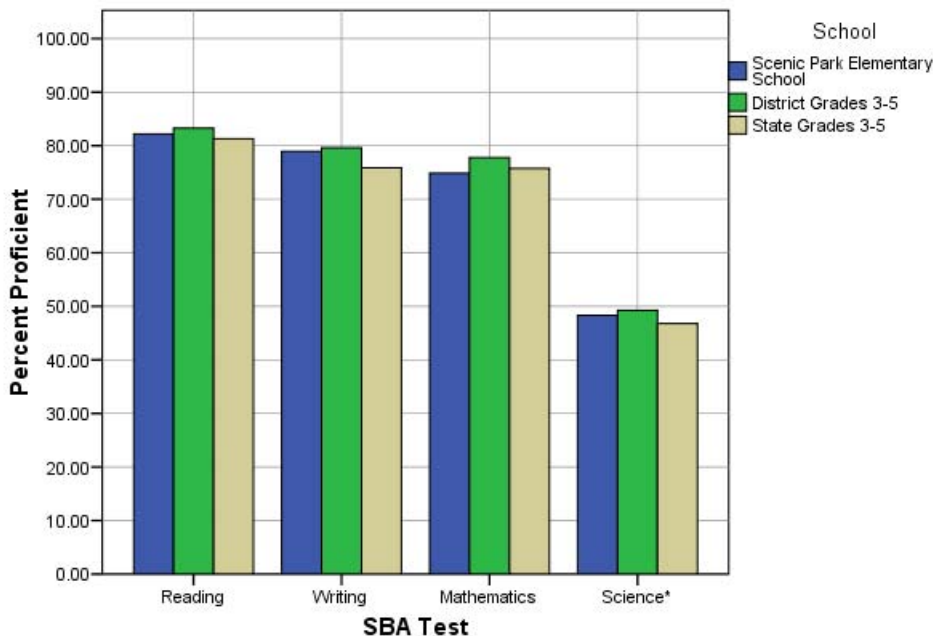
Mathematics: SBA Results Compared for Scenic Park Elementary School, District and State Grades 3 Through 5															
	% Advanced Proficient			% Proficient			% Below Proficient			% Far Below Proficient			% Tested		
	School	District	State	School	District	State	School	District	State	School	District	State	School	District	State
All Students	34.55%	39.81%	36.35%	40.31%	37.95%	39.40%	14.66%	12.04%	13.27%	10.47%	10.20%	10.98%	99.48%	98.53%	98.09%
AF AM	*	18.70%	22.58%	*	43.12%	43.10%	25.00%	17.77%	16.07%	33.33%	20.40%	18.24%	96.00%	98.18%	97.31%
AKNA/AI	29.41%	22.24%	18.10%	35.29%	39.64%	39.76%	17.65%	20.22%	21.75%	17.65%	17.90%	20.38%	100.00%	97.15%	97.73%
Asian	*	37.60%	34.59%	37.50%	40.46%	40.53%	*	13.45%	13.70%	*	8.49%	11.18%	100.00%	99.34%	99.00%
NH/OPI	*	18.86%	N/A	40.00%	35.92%	N/A	*	19.90%	N/A	30.00%	25.32%	N/A	100.00%	99.23%	N/A
White	49.35%	51.53%	46.28%	41.56%	35.15%	38.25%	*	7.83%	9.23%	*	5.49%	6.24%	100.00%	98.68%	98.14%
Hispanic	*	31.50%	30.88%	*	40.45%	42.80%	26.67%	14.80%	14.40%	20.00%	13.25%	11.91%	93.75%	98.73%	98.52%
ME	40.00%	33.77%	35.82%	42.50%	41.28%	40.71%	*	13.44%	12.71%	*	11.51%	10.76%	100.00%	98.31%	98.00%
EDS	26.19%	24.23%	23.40%	38.10%	41.68%	41.35%	19.05%	17.02%	18.13%	16.67%	17.06%	17.13%	97.67%	98.22%	96.74%
Not EDS	41.12%	51.15%	46.42%	42.06%	35.24%	37.89%	11.21%	8.41%	9.49%	5.61%	5.21%	6.20%	100.00%	98.76%	99.18%
SWD	*	12.61%	12.84%	*	33.23%	33.93%	35.29%	22.71%	22.39%	29.41%	31.44%	30.84%	97.14%	94.36%	94.16%
Non-SWD	41.40%	44.89%	40.46%	42.04%	38.83%	40.36%	10.19%	10.04%	11.67%	6.37%	6.23%	7.51%	100.00%	99.36%	98.82%
LEP	17.65%	8.77%	6.16%	23.53%	36.68%	34.87%	17.65%	23.96%	27.40%	41.18%	30.59%	31.57%	100.00%	97.80%	97.53%
Not LEP	36.21%	42.80%	40.49%	41.95%	38.07%	40.02%	14.37%	10.89%	11.33%	7.47%	8.24%	8.16%	99.43%	98.61%	98.17%
Migrant	63.64%	31.88%	22.17%	27.27%	45.18%	41.96%	*	12.39%	19.35%	*	10.55%	16.52%	100.00%	98.64%	98.69%
Not Migrant	32.78%	40.15%	37.33%	41.11%	37.64%	39.23%	15.56%	12.02%	12.84%	10.56%	10.19%	10.60%	99.45%	98.53%	98.05%
Female	37.11%	41.04%	37.14%	36.08%	38.18%	39.82%	13.40%	11.24%	12.86%	13.40%	9.54%	10.18%	98.98%	98.77%	98.31%
Male	31.91%	38.62%	35.60%	44.68%	37.73%	39.01%	15.96%	12.81%	13.65%	7.45%	10.85%	11.75%	100.00%	98.31%	97.89%

* Results cannot be published without releasing personally identifiable information based upon the EED reporting protocol

Science: SBA Results Compared for Scenic Park Elementary School, District and State Grade 4															
	% Advanced Proficient			% Proficient			% Below Proficient			% Far Below Proficient			% Tested		
	School	District	State	School	District	State	School	District	State	School	District	State	School	District	State
All Students	11.67%	23.68%	22.1%	36.67%	25.57%	24.7%	25.00%	31.70%	31.3%	26.67%	19.06%	21.9%	98.36%	97.81%	95.35%
AF AM	*	9.18%	8.9%	*	18.84%	23.3%	*	39.13%	38.0%	*	32.85%	29.8%	100.00%	98.57%	94.49%
AKNA/AI	*	6.54%	6.8%	*	21.50%	14.2%	*	42.99%	35.2%	*	28.97%	43.8%	100.00%	96.40%	94.98%
Asian	*	10.18%	13.4%	*	21.40%	19.4%	*	39.30%	37.5%	*	29.12%	29.7%	100.00%	98.28%	97.39%
NH/OPI	*	6.57%	N/A	*	8.03%	N/A	*	34.31%	N/A	80.00%	51.09%	N/A	100.00%	98.56%	N/A
White	20.00%	36.40%	32.3%	44.00%	29.08%	29.9%	*	25.33%	27.3%	*	9.19%	10.5%	100.00%	97.87%	94.97%
Hispanic	*	16.17%	18.2%	*	26.15%	26.0%	*	32.08%	33.9%	*	25.61%	21.9%	80.00%	97.12%	96.39%
ME	*	16.06%	18.5%	*	26.12%	26.8%	18.75%	37.47%	35.9%	25.00%	20.34%	18.7%	100.00%	98.32%	96.90%
EDS	*	8.34%	11.0%	*	22.44%	20.1%	20.69%	38.10%	34.7%	41.38%	31.12%	34.2%	96.67%	97.73%	94.99%
Not EDS	16.13%	35.00%	31.2%	41.94%	27.88%	28.5%	29.03%	26.97%	28.5%	12.90%	10.15%	11.9%	100.00%	97.87%	95.64%
SWD	*	8.38%	7.7%	*	16.38%	15.2%	*	36.57%	36.6%	42.86%	38.67%	40.5%	87.50%	93.25%	91.70%
Non-SWD	9.43%	26.43%	24.7%	41.51%	27.22%	26.4%	24.53%	30.82%	30.4%	24.53%	15.53%	18.5%	100.00%	98.68%	96.04%
LEP	*	2.00%	1.5%	*	5.14%	3.8%	*	34.00%	28.3%	75.00%	58.86%	66.5%	100.00%	96.15%	95.67%
Not LEP	13.46%	26.13%	25.2%	40.38%	27.88%	27.9%	26.92%	31.44%	31.8%	19.23%	14.55%	15.1%	98.11%	98.00%	95.30%
Migrant	*	9.70%	9.0%	*	26.87%	15.3%	*	39.55%	34.3%	*	23.88%	41.4%	100.00%	97.10%	97.32%
Not Migrant	12.07%	24.24%	23.0%	36.21%	25.51%	25.3%	25.86%	31.38%	31.1%	25.86%	18.86%	20.5%	98.31%	97.84%	95.21%
Female	9.38%	22.73%	20.8%	40.63%	25.78%	25.2%	12.50%	33.63%	32.6%	37.50%	17.87%	21.4%	100.00%	98.05%	95.43%
Male	14.29%	24.61%	23.4%	32.14%	25.36%	24.2%	39.29%	29.80%	30.1%	14.29%	20.23%	22.3%	96.55%	97.58%	95.27%

* Results cannot be published without releasing personally identifiable information based upon the EED reporting protocol

2007-08 SBA Results Compared for Scenic Park Elementary School, District and State

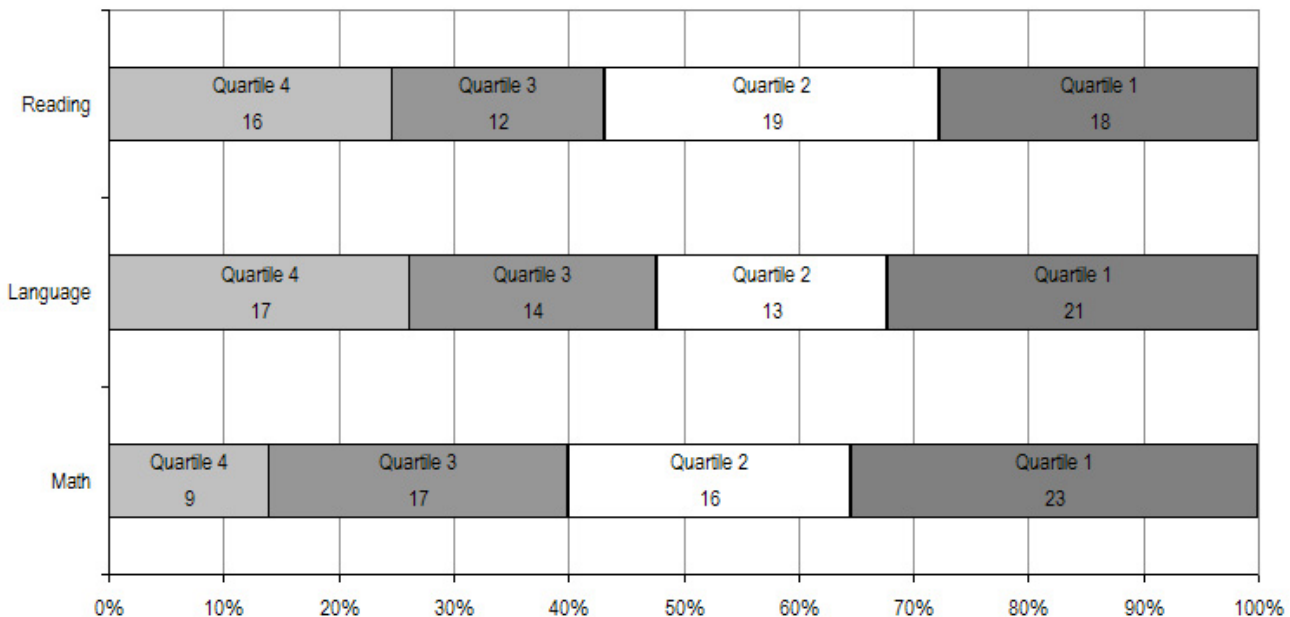


* 2007-08 was the first year Science was administered for grades 4, 8 and 10 on the SBA.

Scenic Park Elementary School TerraNova Grade 5 Percent in Each Quartile								
Reading	Above Average		Average				Below Average	
	4th Quartile (76-99 percentile)		3rd Quartile (51-75 percentile)		2nd Quartile (26-50 percentile)		1st Quartile (1-25 percentile)	
	School	District	School	District	School	District	School	District
07-08	24.62%	25.65%	18.46%	24.08%	29.23%	23.73%	27.69%	26.55%
06-07	31.5%	33.1%	38.9%	26.1%	22.2%	23.6%	7.4%	17.2%
05-06	18.3%	30.4%	29.6%	26.8%	36.6%	24.5%	15.5%	18.3%
04-05	18.3%	29.2%	28.2%	27.6%	29.6%	24.5%	23.9%	18.7%
03-04	27.8%	30.6%	24.1%	26.9%	31.6%	24.2%	16.5%	18.3%
Language								
07-08	26.15%	26.79%	21.54%	27.20%	20.00%	24.12%	32.31%	21.89%
06-07	40.7%	34.7%	25.9%	26.9%	25.9%	21.4%	7.4%	17.0%
05-06	19.7%	34.0%	29.6%	26.5%	32.4%	22.0%	18.3%	17.5%
04-05	21.1%	32.1%	29.6%	28.3%	23.9%	21.2%	25.4%	18.4%
03-04	30.4%	34.1%	24.1%	26.5%	31.6%	21.7%	13.9%	17.7%
Mathematics								
07-08	13.85%	25.45%	26.15%	26.40%	24.62%	24.47%	35.38%	23.68%
06-07	31.5%	29.7%	27.8%	31.6%	25.9%	21.2%	14.8%	17.4%
05-06	19.7%	28.4%	33.8%	31.9%	29.6%	22.3%	16.9%	17.5%
04-05	18.3%	26.9%	21.1%	31.1%	35.2%	22.9%	25.4%	19.1%
03-04	15.2%	28.3%	29.1%	29.3%	29.1%	22.6%	26.6%	19.8%

The double bold line indicates a change from the TerraNova 2nd edition to the TerraNova 3rd edition.

2007-08 TerraNova 3rd Edition Grade 5 Percent and Count of Students in Each Quartile For Scenic Park Elementary School



Climate Survey Results for Scenic Park Elementary School

The Anchorage School District administered the School Climate and Connectedness Surveys in spring 2008 to students in grades 5-12, all school staff and parents/guardians of students in grades K-12. The surveys were done to provide schools with information about perceptions and experiences related to school climate for use in setting school goals and redirecting resources. In the spring of 2008 grades 3 and 4 students were involved in a pilot survey for measuring school climate and connectedness. The results are currently under review by the American Institutes for Research.

Respondents were asked to answer a series of questions that were related to a certain concept. For each item, there were five options from which to choose a response. The answer options ranged from strongly disagree (1) to strongly agree (5).

Student Survey Response Rate Grades 5-12			
	Scenic Park Elementary School	Overall Elementary Schools	District**
# Surveys Completed	61	5,579	21,629
# Reportable Surveys	57	4,969	18,654
# Students Enrolled*	66	6,331	28,945
Reportable Response Rate	86.36%	78.49%	64.45%

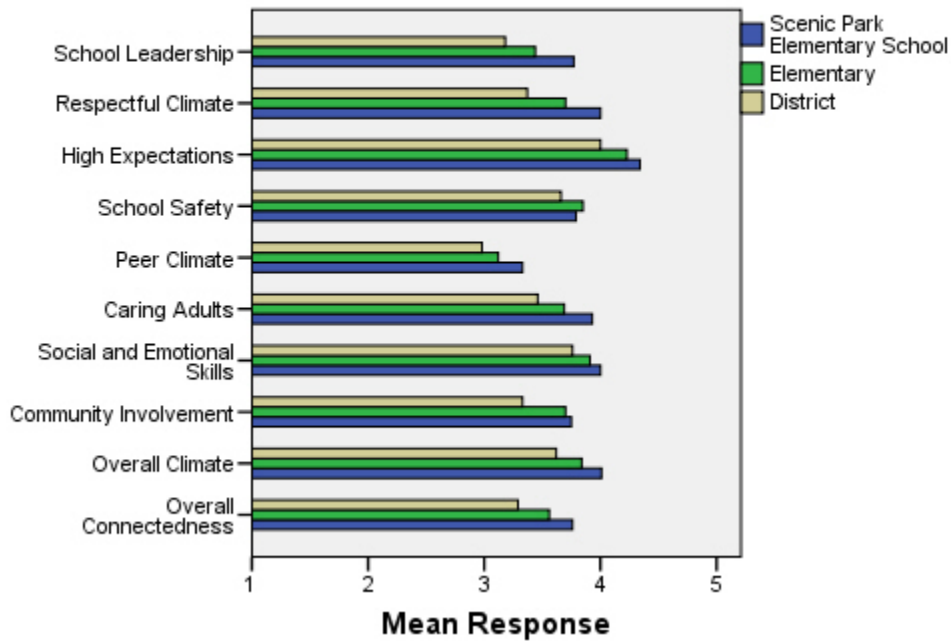
*Number enrolled as of April 1, 2008

**District data does not include KCC responses

Each question in the survey related to a factor or concept, and a score was calculated based on the mean response for the questions related to each factor. The factors measured in the survey were:

- **School Leadership and Student Involvement:** This factor reflects students' feelings about the decision making of school leaders as well as student participation in the school governance. Students selected responses between 1 and 5 where 1 indicates a low level of school leadership and student involvement and 5 indicates a high level of school leadership and student involvement.
- **Respectful Climate:** This factor reflects students' feelings about fairness of rules and respect for students' contributions. Students selected responses between 1 and 5 where 1 indicates a lack of a respectful climate and 5 indicates a highly respectful climate for students.
- **High Expectations:** This factor reflects students' feelings about their own expectations as well as those of adults in their school and community. Students selected responses between 1 and 5 where 1 indicates a lack of high expectations and 5 indicates a high level of high expectations.
- **School Safety:** This factor reflects students' feelings about bullies and gangs at school as well as general crime and violence in the community. Students selected responses between 1 and 5 where 1 indicates a low level of school safety and 5 indicates a high level of school safety.
- **Peer Climate:** This factor reflects students' feelings about how respectful students are to one another and how helpful students are to other students. Students selected responses between 1 and 5 where 1 indicates a more negative peer climate and 5 indicates a very positive peer climate at the school.
- **Caring Adults:** This factor reflects students' feelings about how close they feel to adults in the school. Students selected responses between 1 and 5 where 1 indicates a lack of caring adult relationships and 5 indicates strong caring adult relationships at the school.
- **Social and Emotional Learning:** This factor reflects students' ability to think about the consequences of their actions and to empathize with others. Students selected responses between 1 and 5 where 1 indicates that students at the school perceive themselves as having poorer social and emotional learning, and 5 indicates higher levels of social and emotional learning.
- **Community Involvement:** This factor reflects students' feelings about how supportive and welcoming the school is with parents and the community. Students selected responses between 1 and 5 where 1 indicates a less supportive and welcoming environment and 5 indicates a more supportive and welcoming environment.
- **Overall Climate:** The overall climate score was computed as the mean of three scales: school leadership, high expectations and school safety.
- **Overall Connectedness:** Overall connectedness score was computed as a mean of four scales: respectful climate, peer climate, caring adults and community involvement.

Climate and Connectedness Student Survey - Scenic Park



Student Survey Mean Response by Factors Related to School Climate - Overall District			
	Scenic Park Elementary School	Overall Elementary Schools	District
School Leadership	3.77	3.44	3.18
Respectful Climate	4.00	3.70	3.37
High Expectations	4.34	4.23	4.00
School Safety	3.79	3.85	3.66
Peer Climate	3.33	3.12	2.98
Caring Adults	3.93	3.69	3.46
Social and Emotional Skills	4.00	3.91	3.76
Community Involvement	3.75	3.70	3.33
Overall Climate	4.01	3.84	3.62
Overall Connectedness	3.76	3.56	3.29

Range is from a low of 1 to a high of 5

Students were also asked to answer questions related to school danger. The following table provides the responses for those questions:

Student Survey Results of the School Danger Questions - Percent of Students Responding in Each Category					
	0 Times	1-2 Times	3-6 Times	7-12 Times	> 12 Times
Scenic Park Elementary School					
Under the influence of drugs?	98.25%	1.75%	0.00%	0.00%	0.00%
Under the influence of alcohol?	96.49%	3.51%	0.00%	0.00%	0.00%
Destroy things (vandalism)?	54.39%	36.84%	5.26%	0.00%	3.51%
Get into fights?	19.30%	29.82%	29.82%	8.77%	12.28%
Steal things?	40.35%	28.07%	21.05%	3.51%	7.02%
Threaten or bully?	25.00%	30.36%	30.36%	3.57%	10.71%
Under the influence of inhalants?	70.18%	24.56%	0.00%	1.75%	3.51%
Carry weapons?	82.46%	12.28%	3.51%	0.00%	1.75%
Overall Elementary Schools					
Under the influence of drugs?	91.87%	5.65%	1.22%	0.31%	0.96%
Under the influence of alcohol?	91.42%	6.01%	1.16%	0.51%	0.90%
Destroy things (vandalism)?	46.82%	32.08%	12.45%	3.30%	5.36%
Get into fights?	22.32%	35.75%	22.56%	7.96%	11.41%
Steal things?	49.79%	27.92%	12.01%	4.33%	5.95%
Threaten or bully?	32.34%	28.83%	17.08%	7.78%	13.97%
Under the influence of inhalants?	71.03%	17.07%	6.14%	2.63%	3.12%
Carry weapons?	79.22%	15.35%	3.17%	0.59%	1.68%
District					
Under the influence of drugs?	60.45%	15.05%	9.54%	3.92%	11.04%
Under the influence of alcohol?	63.11%	16.37%	8.90%	4.43%	7.19%
Destroy things (vandalism)?	41.26%	29.47%	15.45%	5.88%	7.94%
Get into fights?	26.40%	35.20%	21.96%	7.11%	9.33%
Steal things?	44.80%	25.68%	13.81%	6.98%	8.74%
Threaten or bully?	32.21%	26.21%	16.68%	9.27%	15.63%
Under the influence of inhalants?	72.79%	14.21%	5.66%	2.48%	4.87%
Carry weapons?	69.45%	19.15%	5.34%	2.01%	4.06%

Student Survey Results of the Mean Factor Score by Ethnicity (Self-Reported)							
	AKNA/AI	AF AM	Hispanic	Asian/NH	White	Other	Multi-Ethnic
Scenic Park Elementary School							
School Leadership	3.74	4.00	3.80	3.87	3.51	3.90	3.89
Respectful Climate	3.56	4.55	4.50	4.44	3.73	3.90	4.11
High Expectations	4.02	4.54	4.71	4.33	4.34	4.14	4.44
School Safety	4.07	3.53	4.60	4.60	4.05	3.50	3.38
Peer Climate	3.31	3.77	2.60	4.07	3.21	3.00	3.36
Caring Adults	3.83	4.37	3.00	4.13	3.67	3.35	4.55
Social and Emotional Skills	3.75	4.31	4.47	4.02	3.86	3.90	4.14
Community Involvement	3.73	3.96	2.71	3.90	3.61	3.86	3.77
Overall Climate	3.91	4.08	4.37	4.27	4.02	3.85	3.98
Overall Connectedness	3.70	4.01	3.20	4.14	3.60	3.50	3.98
Overall Elementary Schools							
School Leadership	3.56	3.50	3.52	3.55	3.37	3.44	3.42
Respectful Climate	3.75	3.60	3.66	3.72	3.71	3.69	3.63
High Expectations	4.12	4.23	4.23	4.22	4.26	4.19	4.25
School Safety	3.75	3.63	3.73	3.68	4.03	3.66	3.79
Peer Climate	3.12	2.94	3.12	3.18	3.16	3.05	3.05
Caring Adults	3.64	3.73	3.64	3.59	3.74	3.60	3.76
Social and Emotional Skills	3.86	3.84	3.91	3.95	3.93	3.90	3.89
Community Involvement	3.66	3.60	3.67	3.66	3.75	3.66	3.70
Overall Climate	3.81	3.79	3.84	3.81	3.89	3.76	3.82
Overall Connectedness	3.56	3.49	3.51	3.53	3.60	3.49	3.56
District							
School Leadership	3.33	3.14	3.19	3.28	3.14	3.17	3.15
Respectful Climate	3.48	3.18	3.32	3.39	3.39	3.37	3.33
High Expectations	3.98	3.94	3.96	4.02	4.02	4.00	4.01
School Safety	3.60	3.48	3.55	3.47	3.78	3.51	3.62
Peer Climate	3.01	2.85	2.94	3.05	3.00	2.92	2.93
Caring Adults	3.49	3.43	3.37	3.33	3.51	3.42	3.46
Social and Emotional Skills	3.73	3.66	3.73	3.81	3.78	3.75	3.74
Community Involvement	3.37	3.22	3.31	3.29	3.34	3.34	3.31
Overall Climate	3.64	3.52	3.57	3.59	3.65	3.56	3.60
Overall Connectedness	3.33	3.17	3.24	3.26	3.31	3.26	3.27

The response rate is not high enough to provide statistically reliable results for Scenic Park Elementary School's Staff Survey Results.

The response rate is not high enough to provide statistically reliable results Scenic Park Elementary School's Parent/Guardian Survey Results.