

Spring Hill Elementary School Overview

Statement of Program

Spring Hill Elementary is a K-6 school that provides a complete educational program for students in our neighborhood. We work together as a school community to provide a learning environment where students focus on academic achievement, develop self-discipline, positive decision-making and exercise good interpersonal skills. We welcome students and parents as active participants in the learning process. Spring Hill has completed the fifth year of implementing Reading First, a federal grant program supporting reading instruction in the primary grades. The grant activities include a strong focus on phonics, vocabulary, fluency and comprehension. Our focus on building reading comprehension skills continues through all grade levels. We help our students learn to read so that as they grow older, they can read to learn.

From the School Report Card

School Goals

Goal	Level of Achievement
Student performance in the area of comprehension on the state reading assessment will improve by 2 points at each grade level.	Not Attained
Student performance on the state writing assessment will improve by 2 points at each grade level.	Not Attained

From the School Report Card

Budget*

2006-07 Actual Expenditures	\$2,047,186
2007-08 Revised Budgeted Amount	\$2,348,630
2008-09 Proposed Budget	\$2,222,538

*Dollars budgeted or expended are general fund only
From IFAS

Spring Hill Elementary School Characteristics			
	School	District	Source of Information
Membership	324	48,858	Fall OASIS
Capacity	71.52%	N/A	2008-18 ASD Capital Improvement Plan
Attendance Rate	94.14%	92.83%	NCLB Summer Data Collection
Retention Rate K-8	0.00%	0.60%	SMS and NCLB Summer Data Collection
Transiency Rate	24.46%	26.07%	NCLB Summer Data Collection
Economically Disadvantaged	136	17,717	Fall OASIS
Average Weekly Volunteer Hours	10	4,660	Department of Education Report Card Report
Students Taking the Alternate Assessment	1	228	SMS
Change in Enrollment	-11.96%	-0.76%	Fall Oasis

Teacher Qualification				
Number of Teachers	Percent Fully Licensed	Percent With Advanced Degrees	Number Nationally Board Certified	Percent of Classes Taught by "Highly Qualified Teachers"
31	100.00%	38.70%	0	100.00%

Spring Hill Elementary School Business Partnerships
Horace Mann Insurance; Super Suppers

From the School Report Card

Ethnicity Report							
African-American/Black	Alaska Native/American Indian	Asian	Native Hawaiian/Other Pacific Islander	White	Hispanic	Multi-Ethnic	Total
17	41	37	5	131	42	51	324

From Fall Oasis

Full Academic Year		
Students Enrolled	Students Enrolled for FAY	Percent FAY
319	291	91.22%

From participation file (Grades 3-10)

Spring Hill Elementary School
2007-08 Adequate Yearly Progress
Status Report

Does Not Meet AYP
Level 1

AMO For Language Arts: 77.18%
AMO For Mathematics: 66.09%

Group	Participation Rate				"FAY" (D) Tested & Enrolled "FAY"	Language Arts Performance				Mathematics Performance			
	(A) Number Enrolled	(B) Number Tested	Participation Rate (%)	(C) Participation Rate Met		(E) Proficient on LA	(F) Percent Proficient on LA	(G) LA Target	(H) Met AMO for LA	(I) Proficient on Mathematics	(J) Percent Proficient in Mathematics	(K) Mathematics Target	(L) Met AMO for Mathematics
All Students	181	180	99.4%	Yes	168	133	79.2%	69.6%	Yes	132	78.6%	57.6%	Yes
AF AM	5	5	N/A	N/A	N/A	N/A	N/A	N/A	N/A	N/A	N/A	N/A	N/A
AKNA/AI	26	26	100%	Yes	N/A	N/A	N/A	N/A	N/A	N/A	N/A	N/A	N/A
Asian/NH/OPI	28	28	100%	Yes	26	21	80.8%	58%	Yes	***	≥90%	44.5%	Yes
White	78	78	100%	Yes	75	66	88%	65.9%	Yes	63	84%	53.4%	Yes
Hispanic	21	20	95.2%	Yes	N/A	N/A	N/A	N/A	N/A	N/A	N/A	N/A	N/A
ME	23	23	100%	Yes	N/A	N/A	N/A	N/A	N/A	N/A	N/A	N/A	N/A
EDS	73	72	98.6%	Yes	65	42	64.6%	65.1%	No	49	75.4%	52.4%	Yes
SWD	56	56	100%	Yes	53	29	54.7%	63.7%	No	31	58.5%	50.9%	Yes
LEP	46	46	100%	Yes	42	31	73.8%	62.1%	Yes	36	85.7%	49.1%	Yes

Attendance Rate: Met

94.1% (Threshold is 85%)

N/A is used to indicate:

- (1) Subgroups with 20 or fewer students enrolled on the first day of testing shall not be included in participation rate calculation.
- (2) Subgroups with 25 or fewer students enrolled for the "full academic year" shall not have the performance score computed.

* For the groups where the number enrolled is less than or equal to 40, participation is met when no more than two miss the test. Groups can also meet this target using the average of the past two or three years.

** When a group achieves a "Yes" without meeting the listed target, it has done so using either the 99% confidence interval or Safe Harbor.

*** The results cannot be published without releasing personally identifiable information based upon the EED reporting protocol.

This document was prepared by the ASD Assessment and Evaluation Department.

7/10/2008

Spring Hill Elementary School
2007-08 Adequate Yearly Progress
Growth Report

The AYP growth reports are generated by the Alaska State Department of Education and Early Development. The reports can be found online at: http://www.asdk12.org/depts/assess_eval/AYP/State_AS_D_AYG_0708.pdf

SBA Proficiency Comparison by Grade for Spring Hill Elementary School																
	Reading Percent Proficient				Writing Percent Proficient				Mathematics Percent Proficient				Science* Percent Proficient			
	04-05	05-06	06-07	07-08	04-05	05-06	06-07	07-08	04-05	05-06	06-07	07-08	04-05	05-06	06-07	07-08
All Students	82.43%	80.48%	86.29%	78.89%	79.28%	88.57%	86.87%	71.11%	77.13%	83.02%	88.94%	75.42%	N/A	N/A	N/A	57.50%
Grade 3	71.70%	88.89%	86.67%	77.50%	73.58%	86.67%	91.30%	70.00%	88.89%	89.13%	87.23%	75.00%	N/A	N/A	N/A	N/A
Grade 4	92.31%	76.56%	87.76%	87.50%	86.54%	93.75%	89.80%	75.00%	82.69%	95.31%	93.88%	80.00%	N/A	N/A	N/A	57.50%
Grade 5	81.82%	94.23%	79.63%	82.98%	74.55%	95% or more	77.78%	80.85%	74.55%	84.62%	87.04%	70.21%	N/A	N/A	N/A	N/A
Grade 6	83.87%	63.27%	91.84%	69.81%	82.26%	75.51%	89.80%	60.38%	64.52%	60.00%	87.76%	76.92%	N/A	N/A	N/A	N/A

* 2007-08 was the first year Science was administered for grades 4, 8 and 10 on the SBA.

SBA Proficient & Not Proficient by NCLB Groups for Spring Hill Elementary School								
	Reading		Writing		Mathematics		Science**	
	Percent Proficient	Percent Not Proficient	Percent Proficient	Percent Not Proficient	Percent Proficient	Percent Not Proficient	Percent Proficient	Percent Not Proficient
All Students	78.89%	21.11%	71.11%	28.89%	75.42%	24.58%	57.50%	42.50%
AF AM	60% or more	40% or fewer	40% or fewer	60% or more	40% or fewer	60% or more	*	*
AKNA/AI	60.00%	40.00%	56.00%	44.00%	45.83%	54.17%	75% or fewer	25% or more
Asian	80.00%	20.00%	72.00%	28.00%	88.00%	12.00%	*	*
NH/OPI	*	*	*	*	*	*	*	*
White	88.61%	11.39%	79.75%	20.25%	81.01%	18.99%	80.00%	20.00%
Hispanic	80.00%	20.00%	70.00%	30.00%	90% or more	10% or fewer	50.00%	50.00%
ME	69.57%	30.43%	73.91%	26.09%	69.57%	30.43%	40% or more	60% or fewer
EDS	68.06%	31.94%	58.33%	41.67%	71.83%	28.17%	50.00%	50.00%
Non-EDS	86.11%	13.89%	79.63%	20.37%	77.78%	22.22%	63.64%	36.36%
SWD	47.92%	52.08%	45.83%	54.17%	48.94%	51.06%	75% or fewer	25% or more
Non-SWD	90.15%	9.85%	80.30%	19.70%	84.85%	15.15%	67.74%	32.26%
LEP	35.71%	64.29%	35.71%	64.29%	57.14%	42.86%	*	*
Not LEP	82.53%	17.47%	74.10%	25.90%	76.97%	23.03%	58.97%	41.03%
Migrant	70.00%	30.00%	40.00%	60.00%	70.00%	30.00%	*	*
Not Migrant	79.41%	20.59%	72.94%	27.06%	75.74%	24.26%	55.26%	44.74%
Female	85.19%	14.81%	82.72%	17.28%	77.78%	22.22%	60.00%	40.00%
Male	73.74%	26.26%	61.62%	38.38%	73.47%	26.53%	55.00%	45.00%

* Results cannot be published without releasing personally identifiable information based upon the EED reporting protocol

** 2007-08 was the first year Science was administered for grades 4, 8 and 10 on the SBA.

SBA Mean Scale Score Comparison by NCLB Groups for Spring Hill Elementary School								
	Reading		Writing		Mathematics		Science***	
	06-07	07-08	06-07	07-08	06-07	07-08	06-07	07-08
All Students	380.72	367.36	380.41	359.38	372.49	355.95	N/A	305.15
AF AM	351.50	296.20	357.00	258.00	335.38	280.20	N/A	*
AKNA/AI	351.46	322.40	347.54	311.20	343.66	303.29	N/A	250.88
Asian**	373.92*	374.00	378.04*	374.92	377.96*	380.04	N/A	*
NH/OPI**	N/A	*	N/A	*	N/A	*	N/A	*
White	398.37	386.70	394.99	380.78	380.86	367.05	N/A	331.60
Hispanic	381.14	369.70	376.00	354.70	367.80	365.75	N/A	277.00
ME	381.61	357.78	398.83	353.43	408.39	360.22	N/A	332.50
EDS	370.03	343.11	373.42	337.60	366.20	341.80	N/A	289.72
Non-EDS	389.53	383.52	386.23	373.91	377.80	365.25	N/A	317.77
SWD	328.10	305.75	347.80	297.96	329.95	306.74	N/A	245.44
Non-SWD	394.13	389.76	388.92	381.72	383.87	373.47	N/A	322.48
LEP	357.30	310.71	362.07	306.79	365.79	312.43	N/A	*
Not LEP	387.85	372.13	385.96	363.82	374.57	359.64	N/A	309.31
Migrant	355.76	331.20	348.12	303.90	367.47	332.70	N/A	*
Not Migrant	383.08	369.48	383.44	362.65	372.96	357.33	N/A	304.26
Female	397.12	383.01	404.01	382.31	385.17	363.69	N/A	298.95
Male	370.20	354.55	365.39	340.63	364.32	349.55	N/A	311.35

* Results cannot be published without releasing personally identifiable information based upon the EED reporting protocol

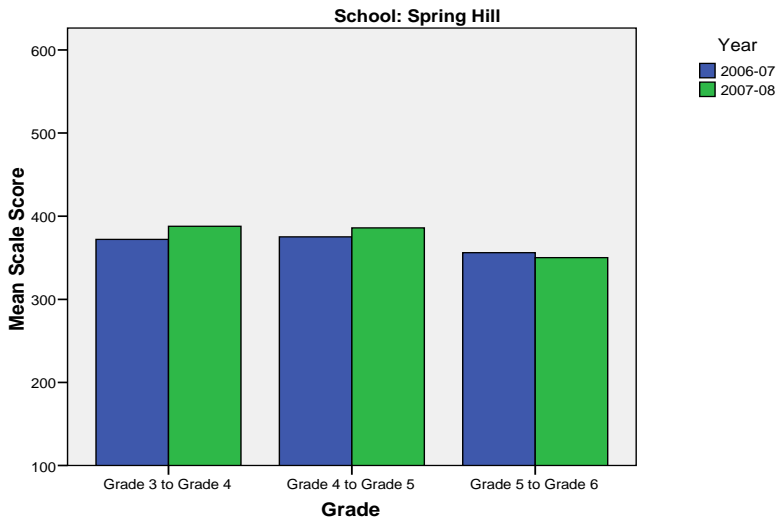
** Prior to 2007-08 the Asian category includes Native Hawaiian/Other Pacific Islander. In 2007-08 Native Hawaiian/Other Pacific Islander is a separate ethnic category.

*** 2007-08 was the first year Science was administered for grades 4, 8 and 10 on the SBA.

Spring Hill Elementary School SBA Change Average Scale Score by NCLB Groups: Reading									
	Average Scale Score of Students Tested in District Both Years			Average Scale Score of Students Tested in District Both Years			Average Scale Score of Students Tested in District Both Years		
	Grade 3 in 06-07	Grade 4 in 07-08	Difference	Grade 4-in 06-07	Grade 5 in 07-08	Difference	Grade 5-in 06-07	Grade 6 in 07-08	Difference
All Students	372.00	387.84	15.84	375.19	385.95	10.77	356.08	350.14	-5.94
AF AM	*	*	*	*	*	*	*	*	*
AKNA/AI	339.75	325.00	-14.75	328.17	314.67	-13.50	338.56	319.56	-19.00
Asian	*	*	*	375.43	388.00	12.57	356.56	361.78	5.22
NH/OPI	*	*	*	*	*	*	*	*	*
White	395.21	424.00	28.79	403.90	412.05	8.15	372.00	361.90	-10.10
Hispanic	357.00	371.60	14.60	*	*	*	350.80	381.60	30.80
ME	367.33	397.00	29.67	*	*	*	333.00	313.17	-19.83
EDS	360.53	370.47	9.94	361.85	371.77	9.92	327.96	316.46	-11.50
Non-EDS	381.75	402.60	20.85	380.97	392.10	11.13	383.08	382.48	-0.60
SWD	337.71	334.71	-3.00	317.93	324.29	6.36	294.85	297.15	2.31
Non-SWD	380.00	400.23	20.23	402.83	415.72	12.90	378.19	369.28	-8.92
LEP	*	*	*	*	*	*	298.20	305.60	7.40
Not LEP	372.00	387.84	15.84	373.73	386.24	12.51	362.66	355.20	-7.45
Migrant	*	*	*	*	*	*	312.43	317.14	4.71
Not Migrant	372.74	387.49	14.74	375.19	385.95	10.77	363.36	355.64	-7.71
Female	380.61	398.78	18.17	379.42	392.26	12.84	374.39	377.56	3.17
Male	363.84	377.47	13.63	371.83	380.96	9.12	345.45	334.23	-11.23

* Results cannot be published without releasing personally identifiable information based upon the EED reporting protocol

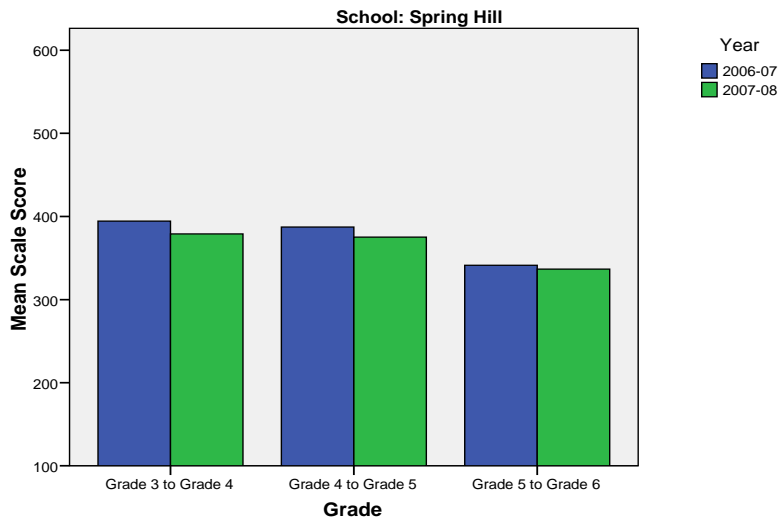
Change in Mean Scale Score in SBA Reading by Grade Between 2006-07 and 2007-08



Spring Hill Elementary School SBA Change Average Scale Score by NCLB Groups: Writing									
	Average Scale Score of Students Tested in District Both Years			Average Scale Score of Students Tested in District Both Years			Average Scale Score of Students Tested in District Both Years		
	Grade 3 in 06-07	Grade 4 in 07-08	Difference	Grade 4- in 06-07	Grade 5 in 07-08	Difference	Grade 5- in 06-07	Grade 6 in 07-08	Difference
All Students	394.27	378.97	-15.30	387.37	375.21	-12.16	341.24	336.57	-4.67
AF AM	*	*	*	*	*	*	*	*	*
AKNA/AI	330.38	311.13	-19.25	325.67	317.17	-8.50	329.67	297.11	-32.56
Asian	*	*	*	392.29	375.00	-17.29	337.33	348.44	11.11
NH/OPI	*	*	*	*	*	*	*	*	*
White	426.64	409.79	-16.86	413.00	399.35	-13.65	355.80	355.75	-0.05
Hispanic	372.80	353.00	-19.80	*	*	*	335.20	355.00	19.80
ME	410.67	388.17	-22.50	*	*	*	321.00	298.67	-22.33
EDS	375.29	355.24	-20.06	369.15	365.23	-3.92	322.54	308.71	-13.83
Non-EDS	410.40	399.15	-11.25	395.27	379.53	-15.73	359.20	363.32	4.12
SWD	361.14	323.00	-38.14	347.86	320.79	-27.07	298.77	278.69	-20.08
Non-SWD	402.00	392.03	-9.97	406.45	401.48	-4.97	356.58	357.47	0.89
LEP	*	*	*	*	*	*	288.60	286.60	-2.00
Not LEP	394.27	378.97	-15.30	388.02	374.63	-13.39	347.23	342.25	-4.98
Migrant	*	*	*	*	*	*	318.00	299.29	-18.71
Not Migrant	396.49	381.34	-15.14	387.37	375.21	-12.16	345.12	342.79	-2.33
Female	403.44	399.67	-3.78	398.79	388.53	-10.26	361.11	364.56	3.44
Male	385.58	359.37	-26.21	378.33	364.67	-13.67	329.71	320.32	-9.39

* Results cannot be published without releasing personally identifiable information based upon the EED reporting protocol

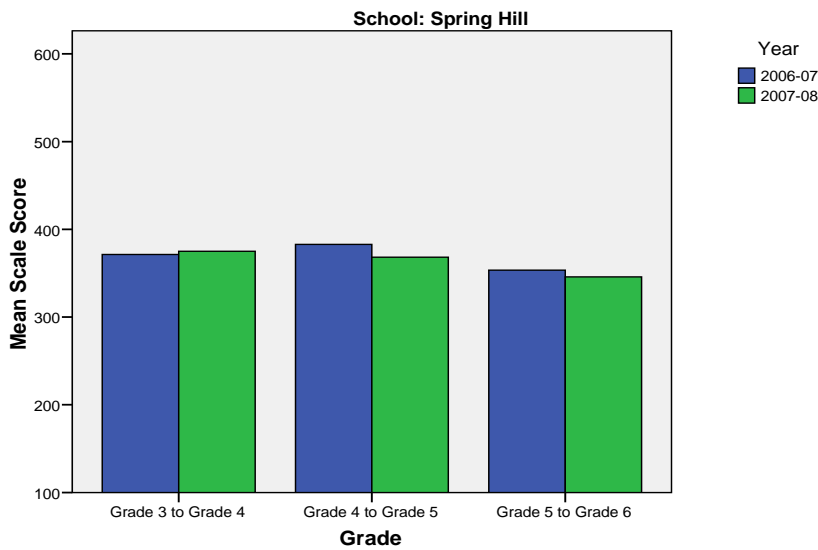
Change in Mean Scale Score in SBA Writing by Grade between 2006-07 and 2007-08



Spring Hill Elementary School SBA Change Average Scale Score by NCLB Groups: Mathematics									
	Average Scale Score of Students Tested in District Both Years			Average Scale Score of Students Tested in District Both Years			Average Scale Score of Students Tested in District Both Years		
	Grade 3 in 06-07	Grade 4 in 07-08	Difference	Grade 4- in 06-07	Grade 5 in 07-08	Difference	Grade 5- in 06-07	Grade 6 in 07-08	Difference
All Students	371.24	375.00	3.76	382.86	368.23	-14.63	353.44	345.81	-7.63
AF AM	*	*	*	*	*	*	*	*	*
AKNA/AI	317.75	328.25	10.50	290.17	268.50	-21.67	324.38	313.75	-10.63
Asian	*	*	*	409.29	402.43	-6.86	376.11	367.22	-8.89
NH/OPI	*	*	*	*	*	*	*	*	*
White	380.57	394.14	13.57	408.00	385.60	-22.40	369.70	358.05	-11.65
Hispanic	378.17	345.67	-32.50	*	*	*	357.60	361.80	4.20
ME	404.33	414.50	10.17	*	*	*	300.50	302.33	1.83
EDS	369.17	362.67	-6.50	367.38	347.54	-19.85	320.09	319.04	-1.04
Non-EDS	373.10	386.10	13.00	389.57	377.20	-12.37	384.12	370.44	-13.68
SWD	331.38	318.25	-13.13	330.00	312.71	-17.29	304.92	304.67	-0.25
Non-SWD	381.87	390.13	8.27	408.38	395.03	-13.34	369.61	359.53	-10.08
LEP	*	*	*	*	*	*	291.20	293.00	1.80
Not LEP	374.59	379.30	4.70	383.46	368.34	-15.12	360.67	351.95	-8.72
Migrant	*	*	*	*	*	*	305.57	315.57	10.00
Not Migrant	371.42	373.67	2.25	382.86	368.23	-14.63	361.61	350.98	-10.63
Female	365.32	367.37	2.05	387.00	378.84	-8.16	377.00	370.39	-6.61
Male	377.16	382.63	5.47	379.58	359.83	-19.75	339.30	331.07	-8.23

* Results cannot be published without releasing personally identifiable information based upon the EED reporting protocol

Change in Mean Scale Score in SBA Mathematics by Grade between 2006-07 and 2007-08



Reading: SBA Results Compared for Spring Hill Elementary School, District and State Grades 3 Through 6															
	% Advanced Proficient			% Proficient			% Below Proficient			% Far Below Proficient			% Tested		
	School	District	State	School	District	State	School	District	State	School	District	State	School	District	State
All Students	35.00%	39.70%	35.67%	43.89%	43.89%	45.50%	17.78%	11.60%	13.02%	3.33%	4.80%	5.80%	99.45%	98.15%	97.98%
AF AM	*	20.73%	22.99%	60.00%	54.18%	53.49%	*	17.79%	16.46%	*	7.30%	7.06%	100.00%	98.04%	97.49%
AKNA/AI	12.00%	20.23%	14.62%	48.00%	51.11%	48.17%	*	18.54%	24.83%	*	10.11%	12.37%	96.15%	96.88%	97.59%
Asian	32.00%	30.22%	28.26%	48.00%	48.71%	51.04%	*	15.32%	15.32%	*	5.75%	5.38%	100.00%	97.64%	97.67%
NH/OPI	*	14.67%	N/A	*	51.03%	N/A	*	24.59%	N/A	*	9.71%	N/A	100.00%	98.98%	N/A
White	45.57%	52.75%	47.28%	43.04%	38.06%	42.41%	*	6.69%	7.27%	*	2.50%	3.03%	100.00%	98.68%	98.28%
Hispanic	40.00%	32.35%	31.74%	40.00%	46.43%	48.60%	*	14.67%	13.66%	*	6.55%	6.00%	95.24%	97.14%	97.32%
ME	34.78%	33.26%	34.76%	34.78%	48.25%	47.75%	*	13.47%	12.80%	*	5.01%	4.70%	100.00%	98.15%	98.03%
EDS	20.83%	22.85%	21.47%	47.22%	49.71%	48.65%	27.78%	19.04%	20.31%	4.17%	8.40%	9.57%	98.63%	97.50%	96.44%
Not EDS	44.44%	51.44%	46.31%	41.67%	39.84%	43.15%	11.11%	6.42%	7.56%	2.78%	2.30%	2.98%	100.00%	98.61%	99.16%
SWD	6.25%	10.08%	9.29%	41.67%	37.10%	37.96%	39.58%	32.15%	31.20%	12.50%	20.67%	21.55%	97.96%	94.28%	93.60%
Non-SWD	45.45%	45.02%	40.09%	44.70%	45.12%	46.77%	*	7.91%	9.98%	*	1.95%	3.17%	100.00%	98.88%	98.75%
LEP	*	4.97%	3.12%	28.57%	39.93%	38.06%	57.14%	37.14%	38.40%	*	17.96%	20.42%	100.00%	94.25%	96.11%
Not LEP	37.35%	42.78%	39.95%	45.18%	44.25%	46.48%	14.46%	9.33%	9.68%	3.01%	3.64%	3.88%	99.40%	98.51%	98.23%
Migrant	*	27.01%	17.29%	60.00%	50.34%	48.58%	*	16.44%	23.78%	*	6.21%	10.35%	100.00%	98.35%	98.50%
Not Migrant	36.47%	40.26%	36.97%	42.94%	43.61%	45.29%	17.65%	11.38%	12.26%	2.94%	4.74%	5.48%	99.42%	98.14%	97.94%
Female	46.91%	44.40%	39.45%	38.27%	43.41%	45.33%	9.88%	8.75%	10.85%	4.94%	3.44%	4.37%	100.00%	98.39%	98.31%
Male	25.25%	35.15%	32.09%	48.48%	44.37%	45.67%	*	14.36%	15.08%	*	6.13%	7.16%	99.00%	97.92%	97.66%

* Results cannot be published without releasing personally identifiable information based upon the EED reporting protocol

Writing: SBA Results Compared for Spring Hill Elementary School, District and State Grades 3 Through 6															
	% Advanced Proficient			% Proficient			% Below Proficient			% Far Below Proficient			% Tested		
	School	District	State	School	District	State	School	District	State	School	District	State	School	District	State
All Students	28.89%	34.87%	30.49%	42.22%	44.25%	44.50%	26.11%	18.78%	22.32%	2.78%	2.10%	2.69%	99.45%	98.11%	97.96%
AF AM	*	20.71%	20.51%	*	46.71%	48.68%	80.00%	28.71%	27.18%	*	3.88%	3.63%	100.00%	98.15%	97.71%
AKNA/AI	*	17.15%	12.11%	*	45.31%	41.05%	32.00%	33.38%	40.69%	12.00%	4.15%	6.15%	96.15%	96.51%	97.64%
Asian	36.00%	30.17%	28.49%	36.00%	45.92%	45.93%	*	21.33%	23.31%	*	2.58%	2.27%	100.00%	97.56%	97.67%
NH/OPI	*	14.02%	N/A	*	42.89%	N/A	*	39.38%	N/A	*	3.71%	N/A	100.00%	99.18%	N/A
White	40.51%	45.85%	40.04%	39.24%	41.91%	44.71%	*	11.26%	13.97%	*	0.99%	1.28%	100.00%	98.66%	98.22%
Hispanic	25.00%	27.33%	27.00%	45.00%	47.25%	48.36%	*	22.54%	22.23%	*	2.88%	2.41%	95.24%	97.07%	97.36%
ME	21.74%	28.51%	29.14%	52.17%	47.68%	47.29%	*	21.31%	21.37%	*	2.51%	2.20%	100.00%	98.15%	97.96%
EDS	19.44%	18.92%	17.53%	38.89%	47.34%	45.15%	*	29.95%	32.95%	*	3.79%	4.37%	98.63%	97.50%	96.53%
Not EDS	35.19%	45.99%	40.21%	44.44%	42.10%	44.01%	17.59%	10.99%	14.35%	2.78%	0.92%	1.44%	100.00%	98.54%	99.06%
SWD	8.33%	7.09%	6.94%	37.50%	38.82%	37.02%	45.83%	45.96%	47.34%	8.33%	8.12%	8.69%	97.96%	94.28%	93.97%
Non-SWD	36.36%	39.86%	34.45%	43.94%	45.23%	45.76%	*	13.89%	18.11%	*	1.02%	1.69%	100.00%	98.83%	98.66%
LEP	*	4.71%	3.14%	21.43%	37.05%	30.66%	57.14%	50.57%	56.76%	*	7.67%	9.44%	100.00%	94.25%	96.18%
Not LEP	30.12%	37.55%	34.08%	43.98%	44.89%	46.32%	23.49%	15.96%	17.79%	2.41%	1.60%	1.81%	99.40%	98.47%	98.20%
Migrant	*	21.44%	14.20%	40.00%	48.58%	42.55%	50.00%	26.63%	38.57%	*	3.35%	4.68%	100.00%	98.51%	98.58%
Not Migrant	30.59%	35.46%	31.63%	42.35%	44.06%	44.64%	24.71%	18.43%	21.18%	2.35%	2.04%	2.55%	99.42%	98.09%	97.92%
Female	37.04%	42.63%	37.48%	45.68%	42.50%	43.42%	13.58%	13.62%	17.40%	3.70%	1.26%	1.70%	100.00%	98.32%	98.22%
Male	22.22%	27.36%	23.87%	39.39%	45.96%	45.52%	*	23.78%	26.98%	*	2.91%	3.63%	99.00%	97.90%	97.72%

* Results cannot be published without releasing personally identifiable information based upon the EED reporting protocol

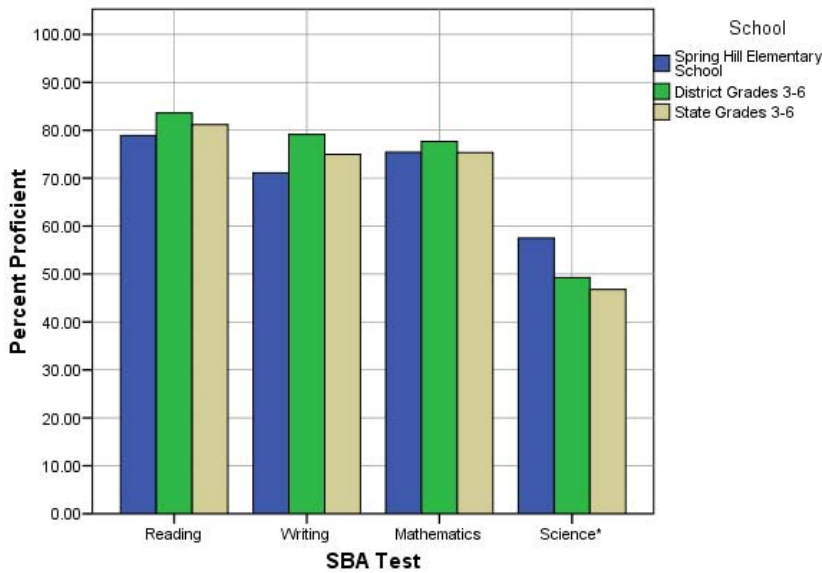
Mathematics: SBA Results Compared for Spring Hill Elementary School, District and State Grades 3 Through 6															
	% Advanced Proficient			% Proficient			% Below Proficient			% Far Below Proficient			% Tested		
	School	District	State	School	District	State	School	District	State	School	District	State	School	District	State
All Students	37.43%	39.81%	36.08%	37.99%	37.84%	39.26%	15.08%	12.46%	13.78%	9.50%	9.88%	10.88%	98.90%	98.52%	98.12%
AF AM	*	19.48%	22.09%	*	40.14%	41.60%	*	20.19%	18.61%	60.00%	20.19%	17.70%	100.00%	98.38%	97.78%
AKNA/AI	20.83%	23.20%	18.26%	25.00%	39.51%	39.14%	29.17%	19.22%	21.79%	25.00%	18.07%	20.81%	92.31%	96.96%	97.72%
Asian	44.00%	37.02%	34.29%	44.00%	41.20%	41.23%	*	13.76%	14.10%	*	8.03%	10.38%	100.00%	99.27%	98.99%
NH/OPI	*	18.52%	N/A	*	38.07%	N/A	*	20.16%	N/A	*	23.25%	N/A	100.00%	99.39%	N/A
White	44.30%	51.12%	45.75%	36.71%	35.15%	38.35%	10.13%	8.41%	9.81%	8.86%	5.32%	6.09%	100.00%	98.69%	98.17%
Hispanic	50.00%	31.85%	31.11%	40.00%	40.04%	42.19%	*	15.02%	15.10%	*	13.09%	11.60%	95.24%	98.66%	98.47%
ME	26.09%	33.75%	35.45%	43.48%	41.21%	40.61%	*	13.93%	13.30%	*	11.11%	10.64%	100.00%	98.26%	98.00%
EDS	29.58%	24.26%	23.31%	42.25%	41.50%	40.98%	18.31%	17.54%	18.60%	9.86%	16.70%	17.11%	97.26%	98.14%	96.77%
Not EDS	42.59%	50.70%	45.67%	35.19%	35.28%	37.96%	12.96%	8.91%	10.16%	9.26%	5.12%	6.21%	100.00%	98.79%	99.16%
SWD	14.89%	12.52%	12.06%	34.04%	31.53%	32.14%	27.66%	23.68%	23.60%	23.40%	32.27%	32.20%	95.92%	94.19%	93.99%
Non-SWD	45.45%	44.69%	40.12%	39.39%	38.97%	40.45%	10.61%	10.46%	12.13%	4.55%	5.88%	7.30%	100.00%	99.34%	98.85%
LEP	*	8.22%	6.05%	50.00%	36.74%	34.10%	28.57%	24.50%	27.43%	*	30.54%	32.42%	100.00%	97.95%	97.56%
Not LEP	40.00%	42.73%	40.09%	36.97%	37.94%	39.95%	13.94%	11.35%	11.96%	9.09%	7.98%	8.01%	98.80%	98.57%	98.19%
Migrant	40.00%	30.94%	22.37%	30.00%	43.65%	40.27%	*	14.21%	20.36%	*	11.20%	17.00%	100.00%	98.68%	98.54%
Not Migrant	37.28%	40.21%	37.05%	38.46%	37.58%	39.19%	14.79%	12.38%	13.31%	9.47%	9.83%	10.45%	98.83%	98.51%	98.09%
Female	39.51%	41.01%	36.83%	38.27%	38.32%	39.88%	9.88%	11.59%	13.34%	12.35%	9.09%	9.96%	100.00%	98.71%	98.31%
Male	35.71%	38.66%	35.38%	37.76%	37.38%	38.67%	19.39%	13.30%	14.20%	7.14%	10.66%	11.75%	98.00%	98.34%	97.94%

* Results cannot be published without releasing personally identifiable information based upon the EED reporting protocol

Science: SBA Results Compared for Spring Hill Elementary School, District and State Grade 4															
	% Advanced Proficient			% Proficient			% Below Proficient			% Far Below Proficient			% Tested		
	School	District	State	School	District	State	School	District	State	School	District	State	School	District	State
All Students	20.00%	23.68%	22.1%	37.50%	25.57%	24.7%	27.50%	31.70%	31.3%	15.00%	19.06%	21.9%	100.00%	97.81%	95.35%
AF AM	*	9.18%	8.9%	*	18.84%	23.3%	*	39.13%	38.0%	*	32.85%	29.8%	N/A	98.57%	94.49%
AKNA/AI	*	6.54%	6.8%	*	21.50%	14.2%	50.00%	42.99%	35.2%	37.50%	28.97%	43.8%	100.00%	96.40%	94.98%
Asian	*	10.18%	13.4%	*	21.40%	19.4%	*	39.30%	37.5%	*	29.12%	29.7%	100.00%	98.28%	97.39%
NH/OPI	*	6.57%	N/A	*	8.03%	N/A	*	34.31%	N/A	*	51.09%	N/A	100.00%	98.56%	N/A
White	33.33%	36.40%	32.3%	46.67%	29.08%	29.9%	*	25.33%	27.3%	*	9.19%	10.5%	100.00%	97.87%	94.97%
Hispanic	*	16.17%	18.2%	50.00%	26.15%	26.0%	*	32.08%	33.9%	*	25.61%	21.9%	100.00%	97.12%	96.39%
ME	*	16.06%	18.5%	50.00%	26.12%	26.8%	*	37.47%	35.9%	*	20.34%	18.7%	100.00%	98.32%	96.90%
EDS	*	8.34%	11.0%	50.00%	22.44%	20.1%	38.89%	38.10%	34.7%	*	31.12%	34.2%	100.00%	97.73%	94.99%
Not EDS	36.36%	35.00%	31.2%	27.27%	27.88%	28.5%	18.18%	26.97%	28.5%	18.18%	10.15%	11.9%	100.00%	97.87%	95.64%
SWD	*	8.38%	7.7%	*	16.38%	15.2%	33.33%	36.57%	36.6%	44.44%	38.67%	40.5%	100.00%	93.25%	91.70%
Non-SWD	22.58%	26.43%	24.7%	45.16%	27.22%	26.4%	*	30.82%	30.4%	*	15.53%	18.5%	100.00%	98.68%	96.04%
LEP	*	2.00%	1.5%	*	5.14%	3.8%	*	34.00%	28.3%	*	58.86%	66.5%	100.00%	96.15%	95.67%
Not LEP	20.51%	26.13%	25.2%	38.46%	27.88%	27.9%	28.21%	31.44%	31.8%	12.82%	14.55%	15.1%	100.00%	98.00%	95.30%
Migrant	*	9.70%	9.0%	*	26.87%	15.3%	*	39.55%	34.3%	*	23.88%	41.4%	100.00%	97.10%	97.32%
Not Migrant	21.05%	24.24%	23.0%	34.21%	25.51%	25.3%	28.95%	31.38%	31.1%	15.79%	18.86%	20.5%	100.00%	97.84%	95.21%
Female	25.00%	22.73%	20.8%	35.00%	25.78%	25.2%	15.00%	33.63%	32.6%	25.00%	17.87%	21.4%	100.00%	98.05%	95.43%
Male	15.00%	24.61%	23.4%	40.00%	25.36%	24.2%	*	29.80%	30.1%	*	20.23%	22.3%	100.00%	97.58%	95.27%

* Results cannot be published without releasing personally identifiable information based upon the EED reporting protocol

2007-08 SBA Results Compared for Spring Hill Elementary School, District and State



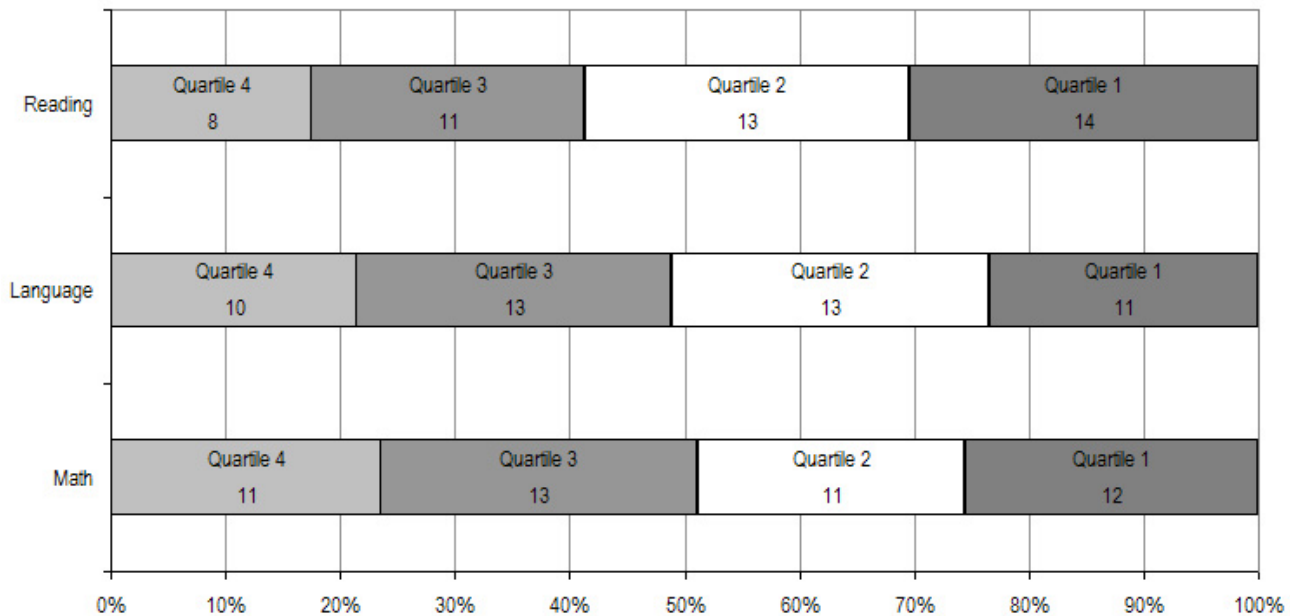
* 2007-08 was the first year Science was administered for grades 4, 8 and 10 on the SBA.

Spring Hill Elementary School TerraNova Grade 5 Percent in Each Quartile								
Reading	Above Average		Average				Below Average	
	4th Quartile (76-99 percentile)		3rd Quartile (51-75 percentile)		2nd Quartile (26-50 percentile)		1st Quartile (1-25 percentile)	
	School	District	School	District	School	District	School	District
07-08	17.39%	25.65%	23.91%	24.08%	28.26%	23.73%	30.43%	26.55%
06-07	13.8%	33.1%	41.4%	26.1%	19.0%	23.6%	25.9%	17.2%
05-06	37.7%	30.4%	34.0%	26.8%	22.6%	24.5%	5.7%	18.3%
04-05	10.7%	29.2%	28.6%	27.6%	39.3%	24.5%	21.4%	18.7%
03-04	19.4%	30.6%	33.9%	26.9%	37.1%	24.2%	9.7%	18.3%
Language								
07-08	21.28%	26.79%	27.66%	27.20%	27.66%	24.12%	23.40%	21.89%
06-07	12.1%	34.7%	31.0%	26.9%	36.2%	21.4%	20.7%	17.0%
05-06	37.7%	34.0%	28.3%	26.5%	24.5%	22.0%	9.4%	17.5%
04-05	21.4%	32.1%	35.7%	28.3%	33.9%	21.2%	8.9%	18.4%
03-04	21.0%	34.1%	32.3%	26.5%	30.6%	21.7%	16.1%	17.7%
Mathematics								
07-08	23.40%	25.45%	27.66%	26.40%	23.40%	24.47%	25.53%	23.68%
06-07	22.4%	29.7%	46.6%	31.6%	*	21.2%	*	17.4%
05-06	30.2%	28.4%	35.8%	31.9%	28.3%	22.3%	5.7%	17.5%
04-05	25.0%	26.9%	37.5%	31.1%	30.4%	22.9%	7.1%	19.1%
03-04	25.8%	28.3%	32.3%	29.3%	27.4%	22.6%	14.5%	19.8%

The double bold line indicates a change from the TerraNova 2nd edition to the TerraNova 3rd edition.

* Results cannot be published without releasing personally identifiable information based upon the EED reporting protocol

2007-08 TerraNova 3rd Edition Grade 5 Percent and Count of Students in Each Quartile For Spring Hill Elementary School



Climate Survey Results for Spring Hill Elementary School

The Anchorage School District administered the School Climate and Connectedness Surveys in spring 2008 to students in grades 5-12, all school staff and parents/guardians of students in grades K-12. The surveys were done to provide schools with information about perceptions and experiences related to school climate for use in setting school goals and redirecting resources. In the spring of 2008 grades 3 and 4 students were involved in a pilot survey for measuring school climate and connectedness. The results are currently under review by the American Institutes for Research.

Respondents were asked to answer a series of questions that were related to a certain concept. For each item, there were five options from which to choose a response. The answer options ranged from strongly disagree (1) to strongly agree (5).

Student Survey Response Rate Grades 5-12			
	Spring Hill Elementary School	Overall Elementary Schools	District**
# Surveys Completed	96	5,579	21,629
# Reportable Surveys	83	4,969	18,654
# Students Enrolled*	102	6,331	28,945
Reportable Response Rate	81.37%	78.49%	64.45%

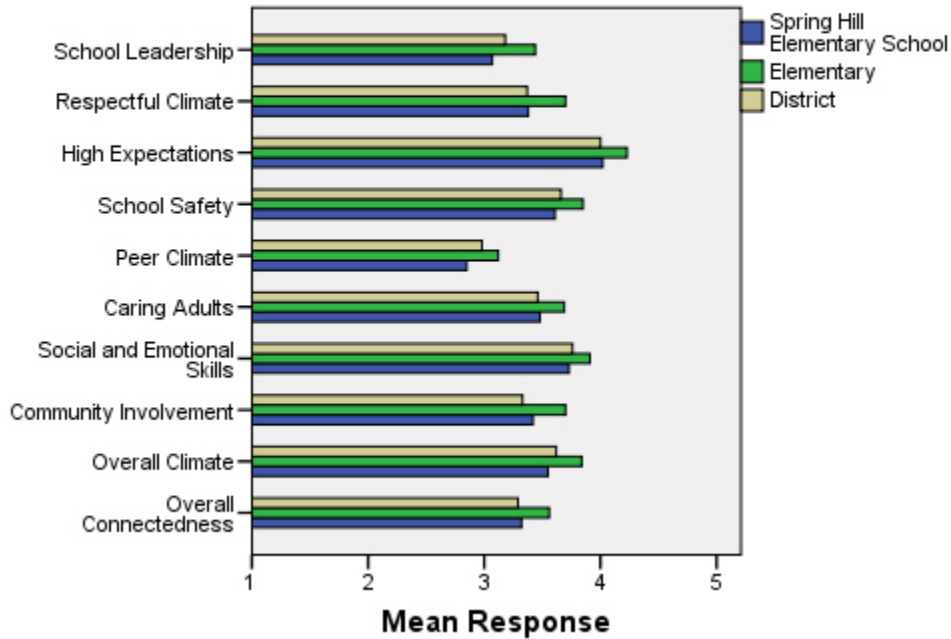
*Number enrolled as of April 1, 2008

**District data does not include KCC responses

Each question in the survey related to a factor or concept, and a score was calculated based on the mean response for the questions related to each factor. The factors measured in the survey were:

- **School Leadership and Student Involvement:** This factor reflects students' feelings about the decision making of school leaders as well as student participation in the school governance. Students selected responses between 1 and 5 where 1 indicates a low level of school leadership and student involvement and 5 indicates a high level of school leadership and student involvement.
- **Respectful Climate:** This factor reflects students' feelings about fairness of rules and respect for students' contributions. Students selected responses between 1 and 5 where 1 indicates a lack of a respectful climate and 5 indicates a highly respectful climate for students.
- **High Expectations:** This factor reflects students' feelings about their own expectations as well as those of adults in their school and community. Students selected responses between 1 and 5 where 1 indicates a lack of high expectations and 5 indicates a high level of high expectations.
- **School Safety:** This factor reflects students' feelings about bullies and gangs at school as well as general crime and violence in the community. Students selected responses between 1 and 5 where 1 indicates a low level of school safety and 5 indicates a high level of school safety.
- **Peer Climate:** This factor reflects students' feelings about how respectful students are to one another and how helpful students are to other students. Students selected responses between 1 and 5 where 1 indicates a more negative peer climate and 5 indicates a very positive peer climate at the school.
- **Caring Adults:** This factor reflects students' feelings about how close they feel to adults in the school. Students selected responses between 1 and 5 where 1 indicates a lack of caring adult relationships and 5 indicates strong caring adult relationships at the school.
- **Social and Emotional Learning:** This factor reflects students' ability to think about the consequences of their actions and to empathize with others. Students selected responses between 1 and 5 where 1 indicates that students at the school perceive themselves as having poorer social and emotional learning, and 5 indicates higher levels of social and emotional learning.
- **Community Involvement:** This factor reflects students' feelings about how supportive and welcoming the school is with parents and the community. Students selected responses between 1 and 5 where 1 indicates a less supportive and welcoming environment and 5 indicates a more supportive and welcoming environment.
- **Overall Climate:** The overall climate score was computed as the mean of three scales: school leadership, high expectations and school safety.
- **Overall Connectedness:** Overall connectedness score was computed as a mean of four scales: respectful climate, peer climate, caring adults and community involvement.

Climate and Connectedness Student Survey - Spring Hill



Student Survey Mean Response by Factors Related to School Climate - Overall District			
	Spring Hill Elementary School	Overall Elementary Schools	District
School Leadership	3.07	3.44	3.18
Respectful Climate	3.38	3.70	3.37
High Expectations	4.02	4.23	4.00
School Safety	3.61	3.85	3.66
Peer Climate	2.85	3.12	2.98
Caring Adults	3.48	3.69	3.46
Social and Emotional Skills	3.73	3.91	3.76
Community Involvement	3.42	3.70	3.33
Overall Climate	3.55	3.84	3.62
Overall Connectedness	3.32	3.56	3.29

Range is from a low of 1 to a high of 5

Students were also asked to answer questions related to school danger. The following table provides the responses for those questions:

Student Survey Results of the School Danger Questions - Percent of Students Responding in Each Category					
	0 Times	1-2 Times	3-6 Times	7-12 Times	> 12 Times
Spring Hill Elementary School					
Under the influence of drugs?	85.37%	6.10%	1.22%	0.00%	7.32%
Under the influence of alcohol?	85.37%	4.88%	1.22%	2.44%	6.10%
Destroy things (vandalism)?	50.00%	22.50%	6.25%	3.75%	17.50%
Get into fights?	28.40%	25.93%	24.69%	7.41%	13.58%
Steal things?	51.25%	16.25%	12.50%	5.00%	15.00%
Threaten or bully?	33.75%	25.00%	7.50%	11.25%	22.50%
Under the influence of inhalants?	62.50%	12.50%	8.75%	3.75%	12.50%
Carry weapons?	59.76%	19.51%	9.76%	2.44%	8.54%
Overall Elementary Schools					
Under the influence of drugs?	91.87%	5.65%	1.22%	0.31%	0.96%
Under the influence of alcohol?	91.42%	6.01%	1.16%	0.51%	0.90%
Destroy things (vandalism)?	46.82%	32.08%	12.45%	3.30%	5.36%
Get into fights?	22.32%	35.75%	22.56%	7.96%	11.41%
Steal things?	49.79%	27.92%	12.01%	4.33%	5.95%
Threaten or bully?	32.34%	28.83%	17.08%	7.78%	13.97%
Under the influence of inhalants?	71.03%	17.07%	6.14%	2.63%	3.12%
Carry weapons?	79.22%	15.35%	3.17%	0.59%	1.68%
District					
Under the influence of drugs?	60.45%	15.05%	9.54%	3.92%	11.04%
Under the influence of alcohol?	63.11%	16.37%	8.90%	4.43%	7.19%
Destroy things (vandalism)?	41.26%	29.47%	15.45%	5.88%	7.94%
Get into fights?	26.40%	35.20%	21.96%	7.11%	9.33%
Steal things?	44.80%	25.68%	13.81%	6.98%	8.74%
Threaten or bully?	32.21%	26.21%	16.68%	9.27%	15.63%
Under the influence of inhalants?	72.79%	14.21%	5.66%	2.48%	4.87%
Carry weapons?	69.45%	19.15%	5.34%	2.01%	4.06%

Student Survey Results of the Mean Factor Score by Ethnicity (Self-Reported)							
	AKNA/AI	AF AM	Hispanic	Asian/NH	White	Other	Multi-Ethnic
Spring Hill Elementary School							
School Leadership	3.15	2.53	3.54	3.38	3.00	2.71	2.85
Respectful Climate	3.32	3.17	3.88	3.55	3.35	3.06	3.08
High Expectations	3.89	3.14	3.98	4.03	4.09	4.10	3.96
School Safety	3.67	3.80	3.51	3.30	3.74	3.60	3.78
Peer Climate	2.86	1.90	2.83	2.93	2.92	2.80	2.80
Caring Adults	3.33	3.20	3.66	3.50	3.59	3.35	3.34
Social and Emotional Skills	3.51	3.20	3.65	3.97	3.91	3.67	3.50
Community Involvement	3.40	2.50	3.50	3.41	3.39	3.46	3.57
Overall Climate	3.61	2.71	3.68	3.40	3.67	3.43	3.51
Overall Connectedness	3.30	2.77	3.46	3.28	3.39	3.26	3.25
Overall Elementary Schools							
School Leadership	3.56	3.50	3.52	3.55	3.37	3.44	3.42
Respectful Climate	3.75	3.60	3.66	3.72	3.71	3.69	3.63
High Expectations	4.12	4.23	4.23	4.22	4.26	4.19	4.25
School Safety	3.75	3.63	3.73	3.68	4.03	3.66	3.79
Peer Climate	3.12	2.94	3.12	3.18	3.16	3.05	3.05
Caring Adults	3.64	3.73	3.64	3.59	3.74	3.60	3.76
Social and Emotional Skills	3.86	3.84	3.91	3.95	3.93	3.90	3.89
Community Involvement	3.66	3.60	3.67	3.66	3.75	3.66	3.70
Overall Climate	3.81	3.79	3.84	3.81	3.89	3.76	3.82
Overall Connectedness	3.56	3.49	3.51	3.53	3.60	3.49	3.56
District							
School Leadership	3.33	3.14	3.19	3.28	3.14	3.17	3.15
Respectful Climate	3.48	3.18	3.32	3.39	3.39	3.37	3.33
High Expectations	3.98	3.94	3.96	4.02	4.02	4.00	4.01
School Safety	3.60	3.48	3.55	3.47	3.78	3.51	3.62
Peer Climate	3.01	2.85	2.94	3.05	3.00	2.92	2.93
Caring Adults	3.49	3.43	3.37	3.33	3.51	3.42	3.46
Social and Emotional Skills	3.73	3.66	3.73	3.81	3.78	3.75	3.74
Community Involvement	3.37	3.22	3.31	3.29	3.34	3.34	3.31
Overall Climate	3.64	3.52	3.57	3.59	3.65	3.56	3.60
Overall Connectedness	3.33	3.17	3.24	3.26	3.31	3.26	3.27

The response rate is not high enough to provide statistically reliable results for Spring Hill Elementary School's Staff Survey Results.

The response rate is not high enough to provide statistically reliable results for Spring Hill Elementary School's Parent/Guardia Survey Results.