

Trailside Elementary School Overview

Statement of Program

Trailside Elementary is an urban school in southeast Anchorage, serving more than 485 students in 21 traditional classrooms. Trailside also has one full-time nurse, librarian, physical education, music, art, health and special education teachers. Speech and language, and physical and occupational therapy service are available. Trailside has the IGNITE Program for gifted students.

From the School Report Card

School Goals

Goal	Level of Achievement
The number of students in grades 3-6 rated proficient on the state reading assessment will increase from 89.1 to 91.6 percent.	Partially Attained
The number of students in grades 3-6 rated proficient on the state math assessment will increase from 89.1 to 91.6 percent.	Partially Attained
Discipline referrals in grades K-6 will decrease by 15 percent; positive reinforcement recognition will increase by 15 percent.	Partially Attained

From the School Report Card

Budget*

2006-07 Actual Expenditures	\$2,495,078
2007-08 Revised Budgeted Amount	\$2,992,011
2008-09 Proposed Budget	\$3,099,532

*Dollars budgeted or expended are general fund only
From IFAS

Trailside Elementary School Characteristics			
	School	District	Source of Information
Membership	481	48,858	Fall OASIS
Capacity	89.01%	N/A	2008-18 ASD Capital Improvement Plan
Attendance Rate	94.75%	92.83%	NCLB Summer Data Collection
Retention Rate K-8	0.42%	0.60%	SMS and NCLB Summer Data Collection
Transiency Rate	11.35%	26.07%	NCLB Summer Data Collection
Economically Disadvantaged	93	17,717	Fall OASIS
Average Weekly Volunteer Hours	150	4,660	Department of Education Report Card Report
Students Taking the Alternate Assessment	1	228	SMS
Change in Enrollment	-0.41%	-0.76%	Fall Oasis

Teacher Qualification				
Number of Teachers	Percent Fully Licensed	Percent With Advanced Degrees	Number Nationally Board Certified	Percent of Classes Taught by "Highly Qualified Teachers"
38	100.00%	44.73%	2	100.00%

Trailside Elementary School Business Partnerships
AFD Fire Station #8; Big Brothers/Big Sisters of Alaska; Perfect Cup; Lowe's, south Anchorage

From the School Report Card

Ethnicity Report							
African-American/Black	Alaska Native/American Indian	Asian	Native Hawaiian/Other Pacific Islander	White	Hispanic	Multi-Ethnic	Total
23	44	42	5	270	31	66	481

From Fall Oasis

Full Academic Year		
Students Enrolled	Students Enrolled for FAY	Percent FAY
479	458	95.62%

From participation file (Grades 3-10)

Trailside Elementary School
2007-08 Adequate Yearly Progress
Status Report

Meets AYP

AMO For Language Arts: 77.18%
AMO For Mathematics: 66.09%

Group	Participation Rate				"FAY" (D) Tested & Enrolled "FAY"	Language Arts Performance				Mathematics Performance			
	(A) Number Enrolled	(B) Number Tested	Participation Rate (%)	(C) Participation Rate Met		(E) Proficient on LA	(F) Percent Proficient on LA	(G) LA Target	(H) Met AMO for LA	(I) Proficient on Mathematics	(J) Percent Proficient in Mathematics	(K) Mathematics Target	(L) Met AMO for Mathematics
All Students	256	256	100%	Yes	246	223	90.7%	70.9%	Yes	219	89%	59.1%	Yes
AF AM	15	15	N/A	N/A	N/A	N/A	N/A	N/A	N/A	N/A	N/A	N/A	N/A
AKNA/AI	20	20	N/A	N/A	N/A	N/A	N/A	N/A	N/A	N/A	N/A	N/A	N/A
Asian/NH/OPI	27	27	100%	Yes	N/A	N/A	N/A	N/A	N/A	N/A	N/A	N/A	N/A
White	143	143	100%	Yes	139	131	94.2%	68.9%	Yes	130	93.5%	56.7%	Yes
Hispanic	17	17	N/A	N/A	N/A	N/A	N/A	N/A	N/A	N/A	N/A	N/A	N/A
ME	34	34	100%	Yes	32	29	90.6%	59.9%	Yes	28	87.5%	46.6%	Yes
EDS	48	48	100%	Yes	41	33	80.5%	61.9%	Yes	32	78%	48.9%	Yes
SWD	45	45	100%	Yes	43	28	65.1%	62.3%	Yes	29	67.4%	49.3%	Yes
LEP	25	25	100%	Yes	N/A	N/A	N/A	N/A	N/A	N/A	N/A	N/A	N/A

Attendance Rate: Met

94.8% (Threshold is 85%)

N/A is used to indicate:

(1) Subgroups with 20 or fewer students enrolled on the first day of testing shall not be included in participation rate calculation.

(2) Subgroups with 25 or fewer students enrolled for the "full academic year" shall not have the performance score computed.

* For the groups where the number enrolled is less than or equal to 40, participation is met when no more than two miss the test. Groups can also meet this target using the average of the past two or three years.

** When a group achieves a "Yes" without meeting the listed target, it has done so using either the 99% confidence interval or Safe Harbor.

*** The results cannot be published without releasing personally identifiable information based upon the EED reporting protocol.

This document was prepared by the ASD Assessment and Evaluation Department.

7/10/2008

Trailside Elementary School
2007-08 Adequate Yearly Progress
Growth Report

The AYP growth reports are generated by the Alaska State Department of Education and Early Development. The reports can be found online at: http://www.asdk12.org/depts/assess_eval/AYP/State_AS_D_AYG_0708.pdf

SBA Proficiency Comparison by Grade for Trailside Elementary School																
	Reading Percent Proficient				Writing Percent Proficient				Mathematics Percent Proficient				Science* Percent Proficient			
	04-05	05-06	06-07	07-08	04-05	05-06	06-07	07-08	04-05	05-06	06-07	07-08	04-05	05-06	06-07	07-08
All Students	91.32%	91.12%	90.23%	90.20%	88.89%	91.12%	90.23%	90.20%	82.76%	84.54%	88.72%	88.24%	N/A	N/A	N/A	73.24%
Grade 3	91.55%	92.31%	87.32%	88.33%	90.14%	89.23%	83.10%	91.67%	88.89%	86.15%	87.32%	90.00%	N/A	N/A	N/A	N/A
Grade 4	94.12%	93.15%	93.33%	91.55%	94.12%	94.52%	93.33%	91.55%	86.76%	86.30%	91.67%	90.14%	N/A	N/A	N/A	73.24%
Grade 5	93.33%	91.43%	94.29%	87.72%	85.56%	92.86%	94.29%	85.96%	81.32%	90.00%	88.57%	82.46%	N/A	N/A	N/A	N/A
Grade 6	84.75%	88.54%	86.15%	92.54%	86.44%	88.54%	90.77%	91.04%	72.88%	78.13%	87.69%	89.55%	N/A	N/A	N/A	N/A

* 2007-08 was the first year Science was administered for grades 4, 8 and 10 on the SBA.

SBA Proficient & Not Proficient by NCLB Groups for Trailside Elementary School								
	Reading		Writing		Mathematics		Science**	
	Percent Proficient	Percent Not Proficient	Percent Proficient	Percent Not Proficient	Percent Proficient	Percent Not Proficient	Percent Proficient	Percent Not Proficient
All Students	90.20%	9.80%	90.20%	9.80%	88.24%	11.76%	73.24%	26.76%
AF AM	80% or more	20% or fewer	80% or more	20% or fewer	80.00%	20.00%	40% or more	60% or fewer
AKNA/AI	70.00%	30.00%	65.00%	35.00%	65.00%	35.00%	60% or fewer	40% or more
Asian	90% or more	10% or fewer	90% or more	10% or fewer	90% or more	10% or fewer	*	*
NH/OPI	57.14%	42.86%	57.14%	42.86%	57.14%	42.86%	*	*
White	93.66%	6.34%	94.37%	5.63%	92.96%	7.04%	84.44%	15.56%
Hispanic	80% or more	20% or fewer	80% or more	20% or fewer	80% or more	20% or fewer	60% or fewer	40% or more
ME	90% or more	10% or fewer	88.24%	11.76%	88.24%	11.76%	40% or more	60% or fewer
EDS	81.25%	18.75%	79.17%	20.83%	77.08%	22.92%	38.46%	61.54%
Non-EDS	92.27%	7.73%	92.75%	7.25%	90.82%	9.18%	81.03%	18.97%
SWD	56.10%	43.90%	63.41%	36.59%	60.98%	39.02%	30.77%	69.23%
Non-SWD	96.73%	3.27%	95.33%	4.67%	93.46%	6.54%	82.76%	17.24%
LEP	44.44%	55.56%	66.67%	33.33%	66.67%	33.33%	*	*
Not LEP	91.87%	8.13%	91.06%	8.94%	89.02%	10.98%	75.36%	24.64%
Migrant	60% or more	40% or fewer	60% or more	40% or fewer	60% or more	40% or fewer	*	*
Not Migrant	90.76%	9.24%	90.76%	9.24%	88.35%	11.65%	75.36%	24.64%
Female	95.04%	4.96%	95.87%	4.13%	91.74%	8.26%	76.19%	23.81%
Male	85.82%	14.18%	85.07%	14.93%	85.07%	14.93%	68.97%	31.03%

* Results cannot be published without releasing personally identifiable information based upon the EED reporting protocol

** 2007-08 was the first year Science was administered for grades 4, 8 and 10 on the SBA.

SBA Mean Scale Score Comparison by NCLB Groups for Trailside Elementary School								
	Reading		Writing		Mathematics		Science***	
	06-07	07-08	06-07	07-08	06-07	07-08	06-07	07-08
All Students	399.47	402.90	402.69	406.69	386.45	390.75	N/A	339.42
AF AM	360.29	388.53	374.12	400.00	345.18	375.67	N/A	340.86
AKNA/AI	350.89	332.85	349.67	338.65	349.70	328.75	N/A	244.60
Asian**	423.73**	405.70	425.64**	421.30	408.50**	394.75	N/A	*
NH/OPI**	N/A	329.86	N/A	327.57	N/A	309.29	N/A	*
White	412.71	418.99	415.13	424.18	399.98	408.99	N/A	360.42
Hispanic	370.29	401.71	364.29	400.76	358.29	388.47	N/A	266.40
ME	384.31	397.26	392.63	387.29	362.31	373.29	N/A	328.40
EDS	373.90	364.71	376.96	370.83	365.33	352.85	N/A	273.85
Non-EDS	405.68	411.76	408.94	415.00	391.58	399.54	N/A	354.12
SWD	333.47	325.71	347.13	332.32	322.73	322.34	N/A	267.08
Non-SWD	407.86	417.69	409.75	420.94	394.55	403.86	N/A	355.64
LEP	392.91	306.67	392.23	318.44	381.14	310.22	N/A	*
Not LEP	400.06	406.42	403.63	409.92	386.93	393.70	N/A	342.22
Migrant	*	357.33	*	380.00	*	363.67	N/A	*
Not Migrant	400.48	404.00	403.81	407.33	387.33	391.41	N/A	342.32
Female	406.52	418.45	420.49	428.57	386.12	400.05	N/A	349.93
Male	393.67	388.87	388.05	386.93	386.72	382.36	N/A	324.21

* Results cannot be published without releasing personally identifiable information based upon the EED reporting protocol

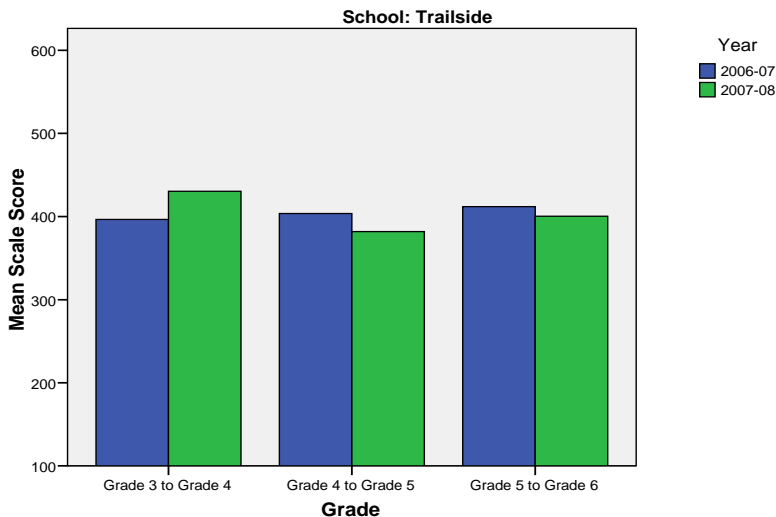
** Prior to 2007-08 the Asian category includes Native Hawaiian/Other Pacific Islander. In 2007-08 Native Hawaiian/Other Pacific Islander is a separate ethnic category.

*** 2007-08 was the first year Science was administered for grades 4, 8 and 10 on the SBA.

Trailside Elementary School SBA Change Average Scale Score by NCLB Groups: Reading									
	Average Scale Score of Students Tested in District Both Years			Average Scale Score of Students Tested in District Both Years			Average Scale Score of Students Tested in District Both Years		
	Grade 3- in 06-07	Grade 4 in 07-08	Difference	Grade 4- in 06-07	Grade 5 in 07-08	Difference	Grade 5- in 06-07	Grade 6 in 07-08	Difference
All Students	396.47	430.36	33.89	403.59	381.80	-21.78	411.92	400.39	-11.53
AF AM	393.43	420.43	27.00	*	*	*	*	*	*
AKNA/AI	293.60	308.40	14.80	*	*	*	339.33	335.17	-4.17
Asian	*	*	*	423.67	378.00	-45.67	414.40	435.20	20.80
NH/OPI	*	*	*	*	*	*	*	*	*
White	417.63	453.20	35.56	412.58	397.35	-15.23	420.32	411.62	-8.71
Hispanic	*	*	*	*	*	*	453.20	413.80	-39.40
ME	*	*	*	392.45	372.27	-20.18	411.63	399.25	-12.38
EDS	333.60	358.00	24.40	332.50	337.75	5.25	400.45	374.64	-25.82
Non-EDS	408.11	443.76	35.65	416.81	390.00	-26.81	414.30	405.74	-8.57
SWD	330.45	358.64	28.18	314.44	306.22	-8.22	*	*	*
Non-SWD	410.17	445.25	35.08	422.69	398.00	-24.69	414.00	402.80	-11.20
LEP	*	*	*	*	*	*	*	*	*
Not LEP	398.30	432.41	34.11	403.59	381.80	-21.78	413.76	402.00	-11.76
Migrant	*	*	*	*	*	*	*	*	*
Not Migrant	398.77	432.92	34.15	403.59	381.80	-21.78	413.76	402.00	-11.76
Female	406.70	444.27	37.57	415.56	399.94	-15.61	419.75	407.29	-12.46
Male	382.44	411.30	28.85	397.06	371.91	-25.15	405.83	395.03	-10.81

* Results cannot be published without releasing personally identifiable information based upon the EED reporting protocol

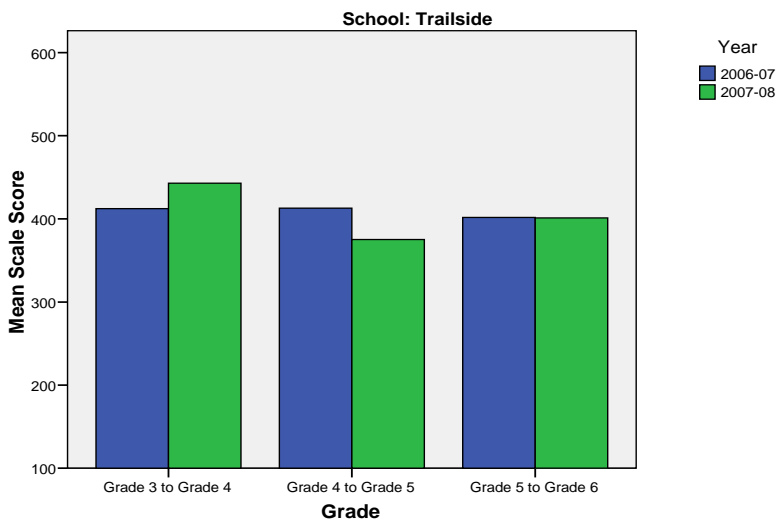
Change in Mean Scale Score in SBA Reading by Grade Between 2006-07 and 2007-08



Trailside Elementary School SBA Change Average Scale Score by NCLB Groups: Writing									
	Average Scale Score of Students Tested in District Both Years			Average Scale Score of Students Tested in District Both Years			Average Scale Score of Students Tested in District Both Years		
	Grade 3- in 06-07	Grade 4 in 07-08	Difference	Grade 4- in 06-07	Grade 5 in 07-08	Difference	Grade 5- in 06-07	Grade 6 in 07-08	Difference
All Students	412.23	442.84	30.61	412.88	375.22	-37.67	401.66	401.19	-0.47
AF AM	435.00	444.29	9.29	*	*	*	*	*	*
AKNA/AI	291.40	334.20	42.80	*	*	*	338.67	339.17	0.50
Asian	*	*	*	428.83	401.83	-27.00	445.80	420.80	-25.00
NH/OPI	*	*	*	*	*	*	*	*	*
White	430.12	459.37	29.24	428.85	383.85	-45.00	404.76	414.12	9.35
Hispanic	*	*	*	*	*	*	458.00	413.00	-45.00
ME	*	*	*	405.73	355.18	-50.55	385.38	396.50	11.13
EDS	347.80	384.00	36.20	353.50	338.38	-15.13	379.00	369.91	-9.09
Non-EDS	424.17	453.74	29.57	423.93	382.07	-41.86	406.36	407.68	1.32
SWD	353.00	353.09	0.09	335.44	310.00	-25.44	*	*	*
Non-SWD	424.53	461.47	36.94	429.48	389.19	-40.29	402.47	405.65	3.18
LEP	*	*	*	*	*	*	*	*	*
Not LEP	414.27	444.14	29.87	412.88	375.22	-37.67	403.32	403.00	-0.32
Migrant	*	*	*	*	*	*	*	*	*
Not Migrant	415.05	444.58	29.53	412.88	375.22	-37.67	403.32	403.00	-0.32
Female	429.95	464.27	34.32	438.00	390.44	-47.56	420.71	424.29	3.57
Male	387.96	413.48	25.52	399.18	366.91	-32.27	386.83	383.22	-3.61

* Results cannot be published without releasing personally identifiable information based upon the EED reporting protocol

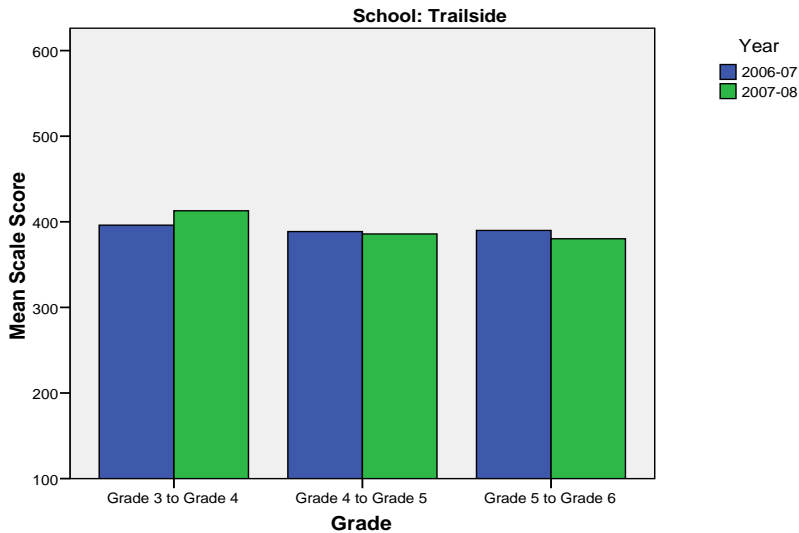
Change in Mean Scale Score in SBA Writing by Grade between 2006-07 and 2007-08



Trailside Elementary School SBA Change Average Scale Score by NCLB Groups: Mathematics									
	Average Scale Score of Students Tested in District Both Years			Average Scale Score of Students Tested in District Both Years			Average Scale Score of Students Tested in District Both Years		
	Grade 3- in 06-07	Grade 4 in 07-08	Difference	Grade 4- in 06-07	Grade 5 in 07-08	Difference	Grade 5- in 06-07	Grade 6 in 07-08	Difference
All Students	396.17	412.92	16.75	388.61	385.86	-2.75	389.92	380.27	-9.66
AF AM	406.00	424.57	18.57	*	*	*	*	*	*
AKNA/AI	310.20	304.40	-5.80	*	*	*	313.67	307.33	-6.33
Asian	*	*	*	396.00	420.33	24.33	412.00	391.00	-21.00
NH/OPI	*	*	*	*	*	*	*	*	*
White	413.80	431.05	17.24	395.23	394.62	-0.62	400.76	398.41	-2.35
Hispanic	*	*	*	*	*	*	421.20	403.60	-17.60
ME	*	*	*	386.91	360.64	-26.27	382.88	362.00	-20.88
EDS	331.70	358.40	26.70	348.63	330.25	-18.38	360.73	337.09	-23.64
Non-EDS	408.11	423.02	14.91	396.05	396.21	0.16	395.98	389.23	-6.75
SWD	336.00	327.36	-8.64	314.11	306.78	-7.33	*	*	*
Non-SWD	408.66	430.68	22.02	404.57	402.81	-1.76	390.33	382.98	-7.35
LEP	*	*	*	*	*	*	*	*	*
Not LEP	398.87	414.24	15.37	388.61	385.86	-2.75	391.25	381.44	-9.81
Migrant	*	*	*	*	*	*	*	*	*
Not Migrant	398.94	415.23	16.29	388.61	385.86	-2.75	391.25	381.44	-9.81
Female	403.70	428.46	24.76	389.56	392.33	2.78	383.54	376.89	-6.64
Male	385.85	391.63	5.78	388.09	382.33	-5.76	394.89	382.89	-12.00

* Results cannot be published without releasing personally identifiable information based upon the EED reporting protocol

Change in Mean Scale Score in SBA Mathematics by Grade between 2006-07 and 2007-08



Reading: SBA Results Compared for Trailside Elementary School, District and State Grades 3 Through 6															
	% Advanced Proficient			% Proficient			% Below Proficient			% Far Below Proficient			% Tested		
	School	District	State	School	District	State	School	District	State	School	District	State	School	District	State
All Students	52.94%	39.70%	35.67%	37.25%	43.89%	45.50%	5.49%	11.60%	13.02%	4.31%	4.80%	5.80%	99.61%	98.15%	97.98%
AF AM	40.00%	20.73%	22.99%	53.33%	54.18%	53.49%	*	17.79%	16.46%	*	7.30%	7.06%	100.00%	98.04%	97.49%
AKNA/AI	20.00%	20.23%	14.62%	50.00%	51.11%	48.17%	15.00%	18.54%	24.83%	15.00%	10.11%	12.37%	100.00%	96.88%	97.59%
Asian	50.00%	30.22%	28.26%	40.00%	48.71%	51.04%	*	15.32%	15.32%	*	5.75%	5.38%	100.00%	97.64%	97.67%
NH/OPI	*	14.67%	N/A	42.86%	51.03%	N/A	*	24.59%	N/A	*	9.71%	N/A	100.00%	98.98%	N/A
White	61.27%	52.75%	47.28%	32.39%	38.06%	42.41%	4.23%	6.69%	7.27%	2.11%	2.50%	3.03%	99.30%	98.68%	98.28%
Hispanic	58.82%	32.35%	31.74%	29.41%	46.43%	48.60%	*	14.67%	13.66%	*	6.55%	6.00%	100.00%	97.14%	97.32%
ME	50.00%	33.26%	34.76%	44.12%	48.25%	47.75%	*	13.47%	12.80%	*	5.01%	4.70%	100.00%	98.15%	98.03%
EDS	33.33%	22.85%	21.47%	47.92%	49.71%	48.65%	8.33%	19.04%	20.31%	10.42%	8.40%	9.57%	100.00%	97.50%	96.44%
Not EDS	57.49%	51.44%	46.31%	34.78%	39.84%	43.15%	4.83%	6.42%	7.56%	2.90%	2.30%	2.98%	99.52%	98.61%	99.16%
SWD	14.63%	10.08%	9.29%	41.46%	37.10%	37.96%	26.83%	32.15%	31.20%	17.07%	20.67%	21.55%	97.62%	94.28%	93.60%
Non-SWD	60.28%	45.02%	40.09%	36.45%	45.12%	46.77%	1.40%	7.91%	9.98%	1.87%	1.95%	3.17%	100.00%	98.88%	98.75%
LEP	*	4.97%	3.12%	33.33%	39.93%	38.06%	33.33%	37.14%	38.40%	*	17.96%	20.42%	100.00%	94.25%	96.11%
Not LEP	54.47%	42.78%	39.95%	37.40%	44.25%	46.48%	4.47%	9.33%	9.68%	3.66%	3.64%	3.88%	99.60%	98.51%	98.23%
Migrant	*	27.01%	17.29%	*	50.34%	48.58%	*	16.44%	23.78%	*	6.21%	10.35%	100.00%	98.35%	98.50%
Not Migrant	53.41%	40.26%	36.97%	37.35%	43.61%	45.29%	5.22%	11.38%	12.26%	4.02%	4.74%	5.48%	99.60%	98.14%	97.94%
Female	61.98%	44.40%	39.45%	33.06%	43.41%	45.33%	2.48%	8.75%	10.85%	2.48%	3.44%	4.37%	100.00%	98.39%	98.31%
Male	44.78%	35.15%	32.09%	41.04%	44.37%	45.67%	8.21%	14.36%	15.08%	5.97%	6.13%	7.16%	99.26%	97.92%	97.66%

* Results cannot be published without releasing personally identifiable information based upon the EED reporting protocol

Writing: SBA Results Compared for Trailside Elementary School, District and State Grades 3 Through 6															
	% Advanced Proficient			% Proficient			% Below Proficient			% Far Below Proficient			% Tested		
	School	District	State	School	District	State	School	District	State	School	District	State	School	District	State
All Students	48.63%	34.87%	30.49%	41.57%	44.25%	44.50%	8.63%	18.78%	22.32%	1.18%	2.10%	2.69%	99.61%	98.11%	97.96%
AF AM	40.00%	20.71%	20.51%	53.33%	46.71%	48.68%	*	28.71%	27.18%	*	3.88%	3.63%	100.00%	98.15%	97.71%
AKNA/AI	20.00%	17.15%	12.11%	45.00%	45.31%	41.05%	*	33.38%	40.69%	*	4.15%	6.15%	100.00%	96.51%	97.64%
Asian	55.00%	30.17%	28.49%	45.00%	45.92%	45.93%	*	21.33%	23.31%	*	2.58%	2.27%	100.00%	97.56%	97.67%
NH/OPI	*	14.02%	N/A	*	42.89%	N/A	*	39.38%	N/A	*	3.71%	N/A	100.00%	99.18%	N/A
White	55.63%	45.85%	40.04%	38.73%	41.91%	44.71%	*	11.26%	13.97%	*	0.99%	1.28%	99.30%	98.66%	98.22%
Hispanic	47.06%	27.33%	27.00%	41.18%	47.25%	48.36%	*	22.54%	22.23%	*	2.88%	2.41%	100.00%	97.07%	97.36%
ME	41.18%	28.51%	29.14%	47.06%	47.68%	47.29%	*	21.31%	21.37%	*	2.51%	2.20%	100.00%	98.15%	97.96%
EDS	37.50%	18.92%	17.53%	41.67%	47.34%	45.15%	*	29.95%	32.95%	*	3.79%	4.37%	100.00%	97.50%	96.53%
Not EDS	51.21%	45.99%	40.21%	41.55%	42.10%	44.01%	*	10.99%	14.35%	*	0.92%	1.44%	99.52%	98.54%	99.06%
SWD	12.20%	7.09%	6.94%	51.22%	38.82%	37.02%	*	45.96%	47.34%	*	8.12%	8.69%	97.62%	94.28%	93.97%
Non-SWD	55.61%	39.86%	34.45%	39.72%	45.23%	45.76%	*	13.89%	18.11%	*	1.02%	1.69%	100.00%	98.83%	98.66%
LEP	*	4.71%	3.14%	55.56%	37.05%	30.66%	*	50.57%	56.76%	*	7.67%	9.44%	100.00%	94.25%	96.18%
Not LEP	50.00%	37.55%	34.08%	41.06%	44.89%	46.32%	*	15.96%	17.79%	*	1.60%	1.81%	99.60%	98.47%	98.20%
Migrant	*	21.44%	14.20%	*	48.58%	42.55%	*	26.63%	38.57%	*	3.35%	4.68%	100.00%	98.51%	98.58%
Not Migrant	49.00%	35.46%	31.63%	41.77%	44.06%	44.64%	8.03%	18.43%	21.18%	1.20%	2.04%	2.55%	99.60%	98.09%	97.92%
Female	61.98%	42.63%	37.48%	33.88%	42.50%	43.42%	*	13.62%	17.40%	*	1.26%	1.70%	100.00%	98.32%	98.22%
Male	36.57%	27.36%	23.87%	48.51%	45.96%	45.52%	12.69%	23.78%	26.98%	2.24%	2.91%	3.63%	99.26%	97.90%	97.72%

* Results cannot be published without releasing personally identifiable information based upon the EED reporting protocol

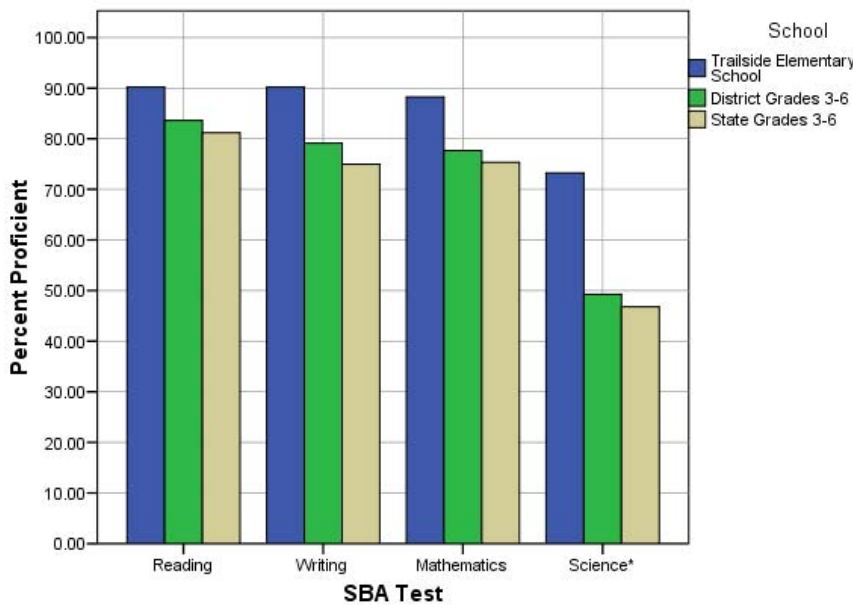
Mathematics: SBA Results Compared for Trailside Elementary School, District and State Grades 3 Through 6															
	% Advanced Proficient			% Proficient			% Below Proficient			% Far Below Proficient			% Tested		
	School	District	State	School	District	State	School	District	State	School	District	State	School	District	State
All Students	52.94%	39.81%	36.08%	35.29%	37.84%	39.26%	7.06%	12.46%	13.78%	4.71%	9.88%	10.88%	99.61%	98.52%	98.12%
AF AM	46.67%	19.48%	22.09%	33.33%	40.14%	41.60%	*	20.19%	18.61%	*	20.19%	17.70%	100.00%	98.38%	97.78%
AKNA/AI	15.00%	23.20%	18.26%	50.00%	39.51%	39.14%	20.00%	19.22%	21.79%	15.00%	18.07%	20.81%	100.00%	96.96%	97.72%
Asian	60.00%	37.02%	34.29%	30.00%	41.20%	41.23%	*	13.76%	14.10%	*	8.03%	10.38%	100.00%	99.27%	98.99%
NH/OPI	*	18.52%	N/A	42.86%	38.07%	N/A	*	20.16%	N/A	42.86%	23.25%	N/A	100.00%	99.39%	N/A
White	61.97%	51.12%	45.75%	30.99%	35.15%	38.35%	4.93%	8.41%	9.81%	2.11%	5.32%	6.09%	99.30%	98.69%	98.17%
Hispanic	47.06%	31.85%	31.11%	47.06%	40.04%	42.19%	*	15.02%	15.10%	*	13.09%	11.60%	100.00%	98.66%	98.47%
ME	47.06%	33.75%	35.45%	41.18%	41.21%	40.61%	*	13.93%	13.30%	*	11.11%	10.64%	100.00%	98.26%	98.00%
EDS	31.25%	24.26%	23.31%	45.83%	41.50%	40.98%	14.58%	17.54%	18.60%	8.33%	16.70%	17.11%	100.00%	98.14%	96.77%
Not EDS	57.97%	50.70%	45.67%	32.85%	35.28%	37.96%	5.31%	8.91%	10.16%	3.86%	5.12%	6.21%	99.52%	98.79%	99.16%
SWD	17.07%	12.52%	12.06%	43.90%	31.53%	32.14%	17.07%	23.68%	23.60%	21.95%	32.27%	32.20%	97.62%	94.19%	93.99%
Non-SWD	59.81%	44.69%	40.12%	33.64%	38.97%	40.45%	5.14%	10.46%	12.13%	1.40%	5.88%	7.30%	100.00%	99.34%	98.85%
LEP	*	8.22%	6.05%	66.67%	36.74%	34.10%	*	24.50%	27.43%	*	30.54%	32.42%	100.00%	97.95%	97.56%
Not LEP	54.88%	42.73%	40.09%	34.15%	37.94%	39.95%	6.91%	11.35%	11.96%	4.07%	7.98%	8.01%	99.60%	98.57%	98.19%
Migrant	*	30.94%	22.37%	50.00%	43.65%	40.27%	*	14.21%	20.36%	*	11.20%	17.00%	100.00%	98.68%	98.54%
Not Migrant	53.41%	40.21%	37.05%	34.94%	37.58%	39.19%	7.23%	12.38%	13.31%	4.42%	9.83%	10.45%	99.60%	98.51%	98.09%
Female	57.02%	41.01%	36.83%	34.71%	38.32%	39.88%	5.79%	11.59%	13.34%	2.48%	9.09%	9.96%	100.00%	98.71%	98.31%
Male	49.25%	38.66%	35.38%	35.82%	37.38%	38.67%	8.21%	13.30%	14.20%	6.72%	10.66%	11.75%	99.26%	98.34%	97.94%

* Results cannot be published without releasing personally identifiable information based upon the EED reporting protocol

Science: SBA Results Compared for Trailside Elementary School, District and State Grade 4															
	% Advanced Proficient			% Proficient			% Below Proficient			% Far Below Proficient			% Tested		
	School	District	State	School	District	State	School	District	State	School	District	State	School	District	State
All Students	45.07%	23.68%	22.1%	28.17%	25.57%	24.7%	16.90%	31.70%	31.3%	9.86%	19.06%	21.9%	100.00%	97.81%	95.35%
AF AM	57.14%	9.18%	8.9%	*	18.84%	23.3%	*	39.13%	38.0%	*	32.85%	29.8%	100.00%	98.57%	94.49%
AKNA/AI	*	6.54%	6.8%	*	21.50%	14.2%	60.00%	42.99%	35.2%	*	28.97%	43.8%	100.00%	96.40%	94.98%
Asian	*	10.18%	13.4%	*	21.40%	19.4%	*	39.30%	37.5%	*	29.12%	29.7%	100.00%	98.28%	97.39%
NH/OPI	*	6.57%	N/A	*	8.03%	N/A	*	34.31%	N/A	*	51.09%	N/A	100.00%	98.56%	N/A
White	57.78%	36.40%	32.3%	26.67%	29.08%	29.9%	8.89%	25.33%	27.3%	6.67%	9.19%	10.5%	100.00%	97.87%	94.97%
Hispanic	*	16.17%	18.2%	*	26.15%	26.0%	60.00%	32.08%	33.9%	*	25.61%	21.9%	100.00%	97.12%	96.39%
ME	*	16.06%	18.5%	60.00%	26.12%	26.8%	*	37.47%	35.9%	*	20.34%	18.7%	100.00%	98.32%	96.90%
EDS	*	8.34%	11.0%	*	22.44%	20.1%	38.46%	38.10%	34.7%	23.08%	31.12%	34.2%	100.00%	97.73%	94.99%
Not EDS	53.45%	35.00%	31.2%	27.59%	27.88%	28.5%	12.07%	26.97%	28.5%	6.90%	10.15%	11.9%	100.00%	97.87%	95.64%
SWD	*	8.38%	7.7%	*	16.38%	15.2%	30.77%	36.57%	36.6%	38.46%	38.67%	40.5%	100.00%	93.25%	91.70%
Non-SWD	51.72%	26.43%	24.7%	31.03%	27.22%	26.4%	*	30.82%	30.4%	*	15.53%	18.5%	100.00%	98.68%	96.04%
LEP	*	2.00%	1.5%	*	5.14%	3.8%	*	34.00%	28.3%	*	58.86%	66.5%	100.00%	96.15%	95.67%
Not LEP	46.38%	26.13%	25.2%	28.99%	27.88%	27.9%	14.49%	31.44%	31.8%	10.14%	14.55%	15.1%	100.00%	98.00%	95.30%
Migrant	*	9.70%	9.0%	*	26.87%	15.3%	*	39.55%	34.3%	*	23.88%	41.4%	100.00%	97.10%	97.32%
Not Migrant	46.38%	24.24%	23.0%	28.99%	25.51%	25.3%	15.94%	31.38%	31.1%	8.70%	18.86%	20.5%	100.00%	97.84%	95.21%
Female	50.00%	22.73%	20.8%	26.19%	25.78%	25.2%	*	33.63%	32.6%	*	17.87%	21.4%	100.00%	98.05%	95.43%
Male	37.93%	24.61%	23.4%	31.03%	25.36%	24.2%	13.79%	29.80%	30.1%	17.24%	20.23%	22.3%	100.00%	97.58%	95.27%

* Results cannot be published without releasing personally identifiable information based upon the EED reporting protocol

2007-08 SBA Results Compared for Trailside Elementary School, District and State

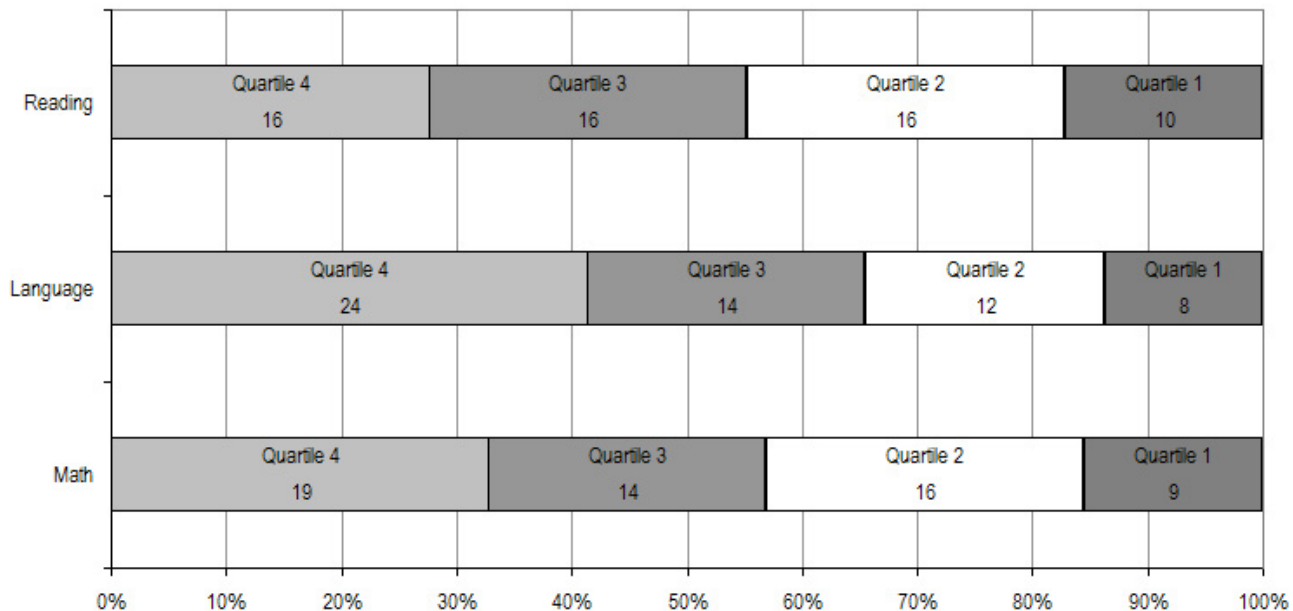


* 2007-08 was the first year Science was administered for grades 4, 8 and 10 on the SBA.

Trailside Elementary School TerraNova Grade 5 Percent in Each Quartile								
Reading	Above Average		Average				Below Average	
	4th Quartile (76-99 percentile)		3rd Quartile (51-75 percentile)		2nd Quartile (26-50 percentile)		1st Quartile (1-25 percentile)	
	School	District	School	District	School	District	School	District
07-08	27.59%	25.65%	27.59%	24.08%	27.59%	23.73%	17.24%	26.55%
06-07	47.1%	33.1%	30.0%	26.1%	14.3%	23.6%	8.6%	17.2%
05-06	47.1%	30.4%	21.4%	26.8%	27.1%	24.5%	4.3%	18.3%
04-05	34.8%	29.2%	41.3%	27.6%	18.5%	24.5%	5.4%	18.7%
03-04	28.8%	30.6%	28.8%	26.9%	28.8%	24.2%	13.6%	18.3%
Language								
07-08	41.38%	26.79%	24.14%	27.20%	20.69%	24.12%	13.79%	21.89%
06-07	41.4%	34.7%	34.3%	26.9%	18.6%	21.4%	5.7%	17.0%
05-06	47.1%	34.0%	27.1%	26.5%	17.1%	22.0%	8.6%	17.5%
04-05	32.6%	32.1%	37.0%	28.3%	20.7%	21.2%	9.8%	18.4%
03-04	32.2%	34.1%	37.3%	26.5%	16.9%	21.7%	13.6%	17.7%
Mathematics								
07-08	32.76%	25.45%	24.14%	26.40%	27.59%	24.47%	15.52%	23.68%
06-07	31.4%	29.7%	31.4%	31.6%	25.7%	21.2%	11.4%	17.4%
05-06	42.9%	28.4%	38.6%	31.9%	14.3%	22.3%	4.3%	17.5%
04-05	22.8%	26.9%	47.8%	31.1%	20.7%	22.9%	8.7%	19.1%
03-04	32.2%	28.3%	32.2%	29.3%	22.0%	22.6%	13.6%	19.8%

The double bold line indicates a change from the TerraNova 2nd edition to the TerraNova 3rd edition.

2007-08 TerraNova 3rd Edition Grade 5 Percent and Count of Students in Each Quartile For Trailside Elementary School



Climate Survey Results for Trailside Elementary School

The Anchorage School District administered the School Climate and Connectedness Surveys in spring 2008 to students in grades 5-12, all school staff and parents/guardians of students in grades K-12. The surveys were done to provide schools with information about perceptions and experiences related to school climate for use in setting school goals and redirecting resources. In the spring of 2008 grades 3 and 4 students were involved in a pilot survey for measuring school climate and connectedness. The results are currently under review by the American Institutes for Research.

Respondents were asked to answer a series of questions that were related to a certain concept. For each item, there were five options from which to choose a response. The answer options ranged from strongly disagree (1) to strongly agree (5).

Student Survey Response Rate Grades 5-12			
	Trailside Elementary School	Overall Elementary Schools	District**
# Surveys Completed	113	5,579	21,629
# Reportable Surveys	108	4,969	18,654
# Students Enrolled*	127	6,331	28,945
Reportable Response Rate	85.04%	78.49%	64.45%

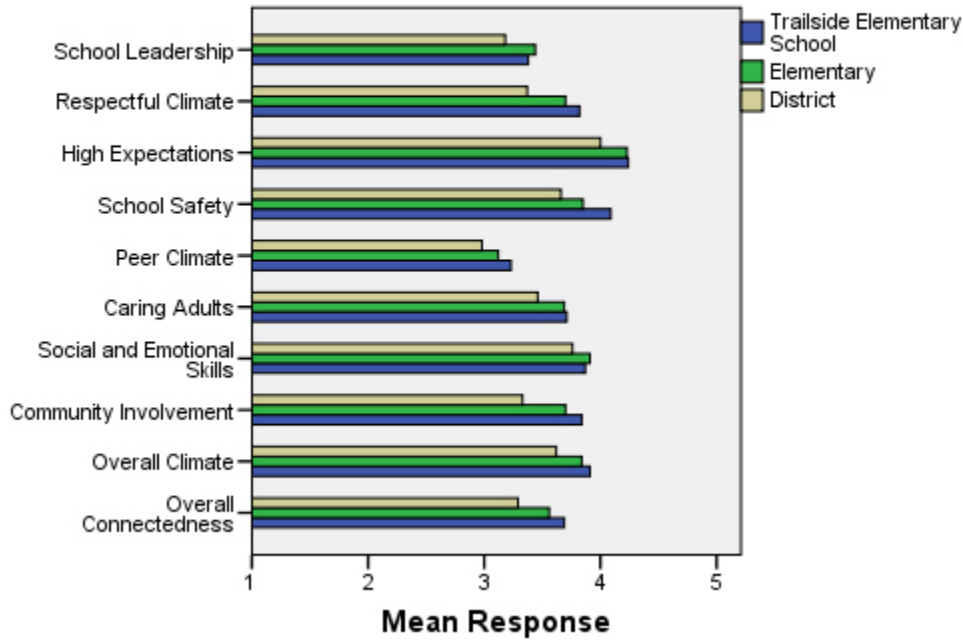
*Number enrolled as of April 1, 2008

**District data does not include KCC responses

Each question in the survey related to a factor or concept, and a score was calculated based on the mean response for the questions related to each factor. The factors measured in the survey were:

- **School Leadership and Student Involvement:** This factor reflects students' feelings about the decision making of school leaders as well as student participation in the school governance. Students selected responses between 1 and 5 where 1 indicates a low level of school leadership and student involvement and 5 indicates a high level of school leadership and student involvement.
- **Respectful Climate:** This factor reflects students' feelings about fairness of rules and respect for students' contributions. Students selected responses between 1 and 5 where 1 indicates a lack of a respectful climate and 5 indicates a highly respectful climate for students.
- **High Expectations:** This factor reflects students' feelings about their own expectations as well as those of adults in their school and community. Students selected responses between 1 and 5 where 1 indicates a lack of high expectations and 5 indicates a high level of high expectations.
- **School Safety:** This factor reflects students' feelings about bullies and gangs at school as well as general crime and violence in the community. Students selected responses between 1 and 5 where 1 indicates a low level of school safety and 5 indicates a high level of school safety.
- **Peer Climate:** This factor reflects students' feelings about how respectful students are to one another and how helpful students are to other students. Students selected responses between 1 and 5 where 1 indicates a more negative peer climate and 5 indicates a very positive peer climate at the school.
- **Caring Adults:** This factor reflects students' feelings about how close they feel to adults in the school. Students selected responses between 1 and 5 where 1 indicates a lack of caring adult relationships and 5 indicates strong caring adult relationships at the school.
- **Social and Emotional Learning:** This factor reflects students' ability to think about the consequences of their actions and to empathize with others. Students selected responses between 1 and 5 where 1 indicates that students at the school perceive themselves as having poorer social and emotional learning, and 5 indicates higher levels of social and emotional learning.
- **Community Involvement:** This factor reflects students' feelings about how supportive and welcoming the school is with parents and the community. Students selected responses between 1 and 5 where 1 indicates a less supportive and welcoming environment and 5 indicates a more supportive and welcoming environment.
- **Overall Climate:** The overall climate score was computed as the mean of three scales: school leadership, high expectations and school safety.
- **Overall Connectedness:** Overall connectedness score was computed as a mean of four scales: respectful climate, peer climate, caring adults and community involvement.

Climate and Connectedness Student Survey - Trailside



Student Survey Mean Response by Factors Related to School Climate - Overall District			
	Trailside Elementary School	Overall Elementary Schools	District
School Leadership	3.38	3.44	3.18
Respectful Climate	3.82	3.70	3.37
High Expectations	4.24	4.23	4.00
School Safety	4.09	3.85	3.66
Peer Climate	3.23	3.12	2.98
Caring Adults	3.71	3.69	3.46
Social and Emotional Skills	3.87	3.91	3.76
Community Involvement	3.84	3.70	3.33
Overall Climate	3.91	3.84	3.62
Overall Connectedness	3.69	3.56	3.29

Range is from a low of 1 to a high of 5

Students were also asked to answer questions related to school danger. The following table provides the responses for those questions:

Student Survey Results of the School Danger Questions - Percent of Students Responding in Each Category					
	0 Times	1-2 Times	3-6 Times	7-12 Times	> 12 Times
Trailside Elementary School					
Under the influence of drugs?	96.26%	2.80%	0.93%	0.00%	0.00%
Under the influence of alcohol?	94.39%	4.67%	0.93%	0.00%	0.00%
Destroy things (vandalism)?	56.73%	30.77%	6.73%	1.92%	3.85%
Get into fights?	28.70%	36.11%	25.93%	2.78%	6.48%
Steal things?	49.07%	32.41%	8.33%	5.56%	4.63%
Threaten or bully?	37.96%	30.56%	15.74%	6.48%	9.26%
Under the influence of inhalants?	68.52%	25.00%	2.78%	0.93%	2.78%
Carry weapons?	81.48%	17.59%	0.00%	0.00%	0.93%
Overall Elementary Schools					
Under the influence of drugs?	91.87%	5.65%	1.22%	0.31%	0.96%
Under the influence of alcohol?	91.42%	6.01%	1.16%	0.51%	0.90%
Destroy things (vandalism)?	46.82%	32.08%	12.45%	3.30%	5.36%
Get into fights?	22.32%	35.75%	22.56%	7.96%	11.41%
Steal things?	49.79%	27.92%	12.01%	4.33%	5.95%
Threaten or bully?	32.34%	28.83%	17.08%	7.78%	13.97%
Under the influence of inhalants?	71.03%	17.07%	6.14%	2.63%	3.12%
Carry weapons?	79.22%	15.35%	3.17%	0.59%	1.68%
District					
Under the influence of drugs?	60.45%	15.05%	9.54%	3.92%	11.04%
Under the influence of alcohol?	63.11%	16.37%	8.90%	4.43%	7.19%
Destroy things (vandalism)?	41.26%	29.47%	15.45%	5.88%	7.94%
Get into fights?	26.40%	35.20%	21.96%	7.11%	9.33%
Steal things?	44.80%	25.68%	13.81%	6.98%	8.74%
Threaten or bully?	32.21%	26.21%	16.68%	9.27%	15.63%
Under the influence of inhalants?	72.79%	14.21%	5.66%	2.48%	4.87%
Carry weapons?	69.45%	19.15%	5.34%	2.01%	4.06%

Student Survey Results of the Mean Factor Score by Ethnicity (Self-Reported)							
	AKNA/AI	AF AM	Hispanic	Asian/NH	White	Other	Multi-Ethnic
Trailside Elementary School							
School Leadership	3.36	3.49	3.53	3.38	3.34	3.40	3.53
Respectful Climate	3.64	3.58	3.94	3.77	3.86	4.00	4.00
High Expectations	3.90	4.22	4.24	4.14	4.32	4.40	4.13
School Safety	3.40	3.91	3.73	4.16	4.33	3.56	3.93
Peer Climate	2.95	2.84	3.70	3.05	3.36	3.20	3.28
Caring Adults	3.13	3.63	4.27	3.36	3.88	3.00	3.80
Social and Emotional Skills	3.59	3.60	4.11	3.66	3.96	3.90	3.90
Community Involvement	3.71	3.57	3.93	3.62	3.94	3.93	4.00
Overall Climate	3.55	3.87	3.83	3.87	4.00	3.79	3.86
Overall Connectedness	3.42	3.54	3.89	3.49	3.81	3.46	3.74
Overall Elementary Schools							
School Leadership	3.56	3.50	3.52	3.55	3.37	3.44	3.42
Respectful Climate	3.75	3.60	3.66	3.72	3.71	3.69	3.63
High Expectations	4.12	4.23	4.23	4.22	4.26	4.19	4.25
School Safety	3.75	3.63	3.73	3.68	4.03	3.66	3.79
Peer Climate	3.12	2.94	3.12	3.18	3.16	3.05	3.05
Caring Adults	3.64	3.73	3.64	3.59	3.74	3.60	3.76
Social and Emotional Skills	3.86	3.84	3.91	3.95	3.93	3.90	3.89
Community Involvement	3.66	3.60	3.67	3.66	3.75	3.66	3.70
Overall Climate	3.81	3.79	3.84	3.81	3.89	3.76	3.82
Overall Connectedness	3.56	3.49	3.51	3.53	3.60	3.49	3.56
District							
School Leadership	3.33	3.14	3.19	3.28	3.14	3.17	3.15
Respectful Climate	3.48	3.18	3.32	3.39	3.39	3.37	3.33
High Expectations	3.98	3.94	3.96	4.02	4.02	4.00	4.01
School Safety	3.60	3.48	3.55	3.47	3.78	3.51	3.62
Peer Climate	3.01	2.85	2.94	3.05	3.00	2.92	2.93
Caring Adults	3.49	3.43	3.37	3.33	3.51	3.42	3.46
Social and Emotional Skills	3.73	3.66	3.73	3.81	3.78	3.75	3.74
Community Involvement	3.37	3.22	3.31	3.29	3.34	3.34	3.31
Overall Climate	3.64	3.52	3.57	3.59	3.65	3.56	3.60
Overall Connectedness	3.33	3.17	3.24	3.26	3.31	3.26	3.27

The response rate is not high enough to provide statistically reliable results for Trailside Elementary School's Staff Survey Results.

Parent/Guardian Survey Response Rate			
	Trailside Elementary School	Overall Elementary Schools	District**
# Surveys Completed	118	3,933	7,415
# Primary Guardians*	478	23,668	48,693
Response Rate	24.69%	16.62%	15.23%

*Number students enrolled as of April 1, 2008 without dual guardians included

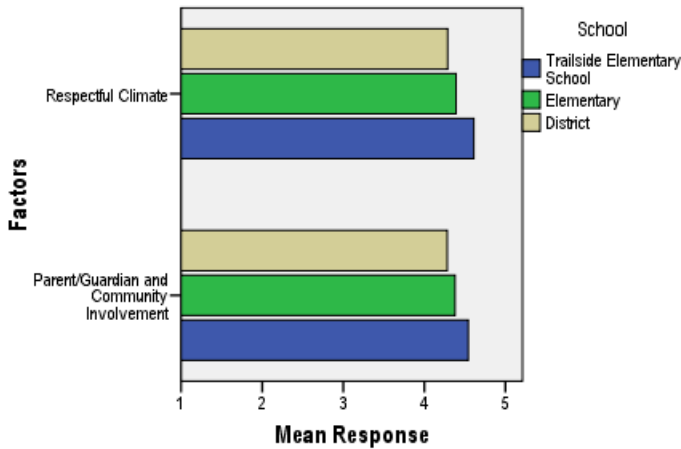
**District data

- 1) does not include KCC responses;
- 2) does include responses without a school designation

Two factors are calculated from the Parent/Guardian Survey. All results other than the factor scores below are reported by individual question: questions in the graphs are condensed phrases from the full question, while questions in the tables are the full question.

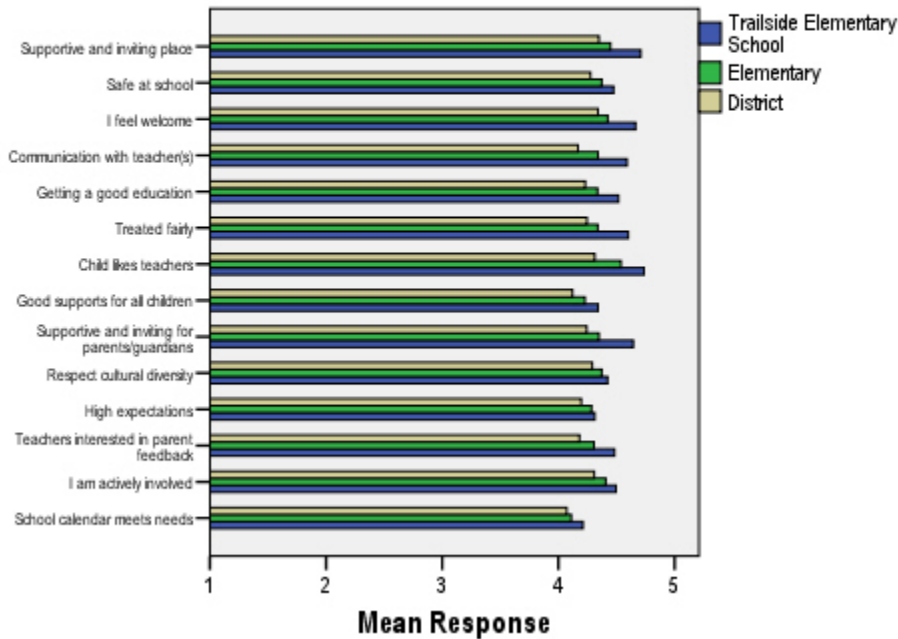
- **Respectful Climate:** This factor is calculated by determining the mean of five questions: 1) My child’s school is a supportive and inviting place, 2) I feel welcome at this school, 3) I am satisfied with communication with my child’s teacher(s), 4) This school is a supportive and inviting place for parents/guardians and 5) Adults at this school respect cultural diversity.
- **Parent/Guardian and Community Involvement:** This factor is calculated by determining the mean of five questions: 1) I feel welcome at this school, 2) This school is a supportive and inviting place for parents/guardians, 3) Adults at this school respect cultural diversity, 4) Teacher’s at my child’s school are interested in what I have to say and 5) I feel like I am actively involved in my child’s education.

Parent/Guardian Survey Mean Factor Scores (Range is from a low of 1 to a high of 5)



Parent/Guardian Factor Scores			
	Trailside Elementary School	Overall Elementary Schools	District
Respectful Climate	4.61	4.39	4.29
Parent/Guardian and Community Involvement	4.54	4.38	4.28

Climate and Connectedness Parent/Guardian Survey - Trailside



Parent/Guardian Mean Response by Questions Related to School Climate - Overall

	Trailside Elementary School	Overall Elementary Schools	District
My child's school is a supportive and inviting place	4.71	4.45	4.35
My child is safe at school	4.47	4.37	4.28
I feel welcome at this school	4.66	4.43	4.34
I am satisfied with communication with my child's teacher(s)	4.59	4.34	4.17
My child is getting a good education at this school	4.52	4.34	4.23
My child is treated fairly at school	4.60	4.34	4.25
My child likes his/her teachers	4.74	4.54	4.31
At this school, there are good supports for all children, including children with learning disabilities	4.34	4.23	4.12
This school is a supportive and inviting place for parents/guardians	4.64	4.35	4.24
Adults at this school respect cultural diversity	4.42	4.37	4.29
Adults at this school have high expectations of my child	4.31	4.29	4.20
Teachers at my child's school are interested in what I have to say	4.48	4.31	4.18
I feel like I am actively involved in my child's education	4.50	4.41	4.31
The district's school calendar meets the needs of my child and our family	4.21	4.11	4.07

Range is from a low of 1 to a high of 5

Parent/Guardian Mean Response by Questions Related to School Climate by Ethnicity (Self-Reported)							
Trailside Elementary School	AKNA/AI	AF AM	Hispanic	Asian/NH	White	Other	ME
My child's school is a supportive and inviting place	4.67	5.00	4.50	4.50	4.73	4.67	4.70
My child is safe at school	4.67	5.00	4.25	4.17	4.51	4.33	4.20
I feel welcome at this school	4.33	5.00	4.25	4.40	4.72	4.67	4.60
I am satisfied with communication with my child's teacher(s)	4.50	5.00	4.25	4.50	4.61	4.67	4.50
My child is getting a good education at this school	4.83	5.00	4.25	4.33	4.50	4.67	4.50
My child is treated fairly at school	4.67	5.00	4.25	4.50	4.63	4.33	4.50
My child likes his/her teachers	4.67	4.00	4.25	4.50	4.79	4.67	4.80
At this school, there are good supports for all children, including children with learning disabilities	4.40	5.00	4.25	4.17	4.33	4.33	4.30
This school is a supportive and inviting place for parents/guardians	4.67	5.00	4.50	4.33	4.67	4.67	4.60
Adults at this school respect cultural diversity	4.50	5.00	4.50	4.00	4.44	4.33	4.30
Adults at this school have high expectations of my child	4.33	5.00	4.50	4.00	4.33	4.33	4.00
Teachers at my child's school are interested in what I have to say	4.33	5.00	4.50	4.17	4.48	4.67	4.50
I feel like I am actively involved in my child's education	4.67	5.00	4.50	4.17	4.48	4.67	4.50
The district's school calendar meets the needs of my child and our family	4.33	5.00	4.25	4.17	4.14	5.00	4.20
Overall Elementary Schools							
My child's school is a supportive and inviting place	4.47	4.36	4.51	4.44	4.47	4.26	4.46
My child is safe at school	4.42	4.40	4.42	4.36	4.38	4.23	4.35
I feel welcome at this school	4.37	4.38	4.47	4.48	4.44	4.27	4.49
I am satisfied with communication with my child's teacher(s)	4.40	4.30	4.45	4.36	4.35	4.19	4.35
My child is getting a good education at this school	4.40	4.28	4.44	4.40	4.33	4.04	4.38
My child is treated fairly at school	4.34	4.15	4.37	4.32	4.38	4.14	4.33
My child likes his/her teachers	4.52	4.41	4.47	4.53	4.57	4.49	4.55
At this school, there are good supports for all children, including children with learning disabilities	4.32	4.06	4.31	4.31	4.22	4.05	4.31
This school is a supportive and inviting place for parents/guardians	4.31	4.22	4.42	4.38	4.36	4.11	4.44
Adults at this school respect cultural diversity	4.28	4.25	4.38	4.27	4.43	4.19	4.39
Adults at this school have high expectations of my child	4.30	4.26	4.36	4.27	4.31	3.95	4.28
Teachers at my child's school are interested in what I have to say	4.35	4.25	4.39	4.24	4.33	4.16	4.31
I feel like I am actively involved in my child's education	4.38	4.48	4.40	4.31	4.45	4.20	4.40
The district's school calendar meets the needs of my child and our family	4.22	4.25	4.20	4.19	4.10	3.62	4.08
District							
My child's school is a supportive and inviting place	4.37	4.20	4.41	4.37	4.37	4.20	4.37
My child is safe at school	4.31	4.18	4.29	4.31	4.29	4.11	4.30
I feel welcome at this school	4.31	4.18	4.38	4.36	4.36	4.23	4.40
I am satisfied with communication with my child's teacher(s)	4.21	3.99	4.32	4.23	4.16	4.03	4.20
My child is getting a good education at this school	4.28	4.09	4.33	4.31	4.23	4.03	4.26
My child is treated fairly at school	4.21	3.94	4.30	4.24	4.29	4.08	4.24
My child likes his/her teachers	4.33	4.06	4.31	4.35	4.33	4.20	4.34
At this school, there are good supports for all children, including children with learning disabilities	4.19	3.90	4.24	4.23	4.11	3.97	4.18
This school is a supportive and inviting place for parents/guardians	4.21	4.05	4.31	4.29	4.26	4.05	4.31
Adults at this school respect cultural diversity	4.20	4.02	4.29	4.22	4.34	4.17	4.31
Adults at this school have high expectations of my child	4.24	4.05	4.26	4.21	4.21	3.94	4.20
Teachers at my child's school are interested in what I have to say	4.22	4.04	4.28	4.17	4.20	4.05	4.19
I feel like I am actively involved in my child's education	4.29	4.36	4.37	4.24	4.33	4.20	4.30
The district's school calendar meets the needs of my child and our family	4.19	4.18	4.21	4.16	4.06	3.66	4.02

Range is from a low of 1 to a high of 5