

### Tudor Elementary School Overview

#### Statement of Program

Tudor Elementary School provides a complete K-6 educational program using Anchorage School District curriculum in reading, writing, mathematics, science, health and social studies. We offer a Title I program focused on increasing student academic achievement. Additional learning opportunities at Tudor include physical education, music, art, library and sixth-grade band and orchestra. Educational services include multi-sensory instruction in grades 1-3, special education, speech, gifted and bilingual services.

We continue to be committed to providing students a well-rounded education that supports the development of lifelong learners. We are dedicated to providing students with successful learning experiences, opportunities for recognition and assistance in reaching their full potential as safe, respectful and responsible members of society.

From the School Report Card

School Goals	
Goal	Level of Achievement
The number of students rated proficient on the state reading assessment will increase from 77.7 to 79.2 percent.	Attained
The number of students rated proficient on the state writing assessment will increase from 69.6 to 72.1 percent.	Attained

From the School Report Card

Budget*	
2006-07 Actual Expenditures	\$2,785,600
2007-08 Revised Budgeted Amount	\$3,171,407
2008-09 Proposed Budget	\$2,808,072

\*Dollars budgeted or expended are general fund only  
From IFAS

Tudor Elementary School Characteristics			
	School	District	Source of Information
Membership	408	48,858	Fall OASIS
Capacity	86.32%	N/A	2008-18 ASD Capital Improvement Plan
Attendance Rate	93.36%	92.83%	NCLB Summer Data Collection
Retention Rate K-8	0.00%	0.60%	SMS and NCLB Summer Data Collection
Transiency Rate	30.42%	26.07%	NCLB Summer Data Collection
Economically Disadvantaged	213	17,717	Fall OASIS
Average Weekly Volunteer Hours	12	4,660	Department of Education Report Card Report
Students Taking the Alternate Assessment	0	228	SMS
Change in Enrollment	-30.14%	-0.76%	Fall Oasis

Teacher Qualification				
Number of Teachers	Percent Fully Licensed	Percent With Advanced Degrees	Number Nationally Board Certified	Percent of Classes Taught by "Highly Qualified Teachers"
34	100.00%	29.41%	1	100.00%

Tudor Elementary School Business Partnerships
AFD Fire Station #4; Municipality of Anchorage Adopt a Park Program

From the School Report Card

Ethnicity Report							
African-American/Black	Alaska Native/American Indian	Asian	Native Hawaiian/Other Pacific Islander	White	Hispanic	Multi-Ethnic	Total
22	38	49	23	122	76	78	408

From Fall Oasis

Full Academic Year		
Students Enrolled	Students Enrolled for FAY	Percent FAY
398	347	87.19%

From participation file (Grades 3-10)

**Tudor Elementary School  
2007-08 Adequate Yearly Progress  
Status Report**

Does Not Meet AYP  
Level 2

AMO For Language Arts: 77.18%  
AMO For Mathematics: 66.09%

Group	Participation Rate				"FAY" (D) Tested & Enrolled "FAY"	Language Arts Performance				Mathematics Performance			
	(A) Number Enrolled	(B) Number Tested	Participation Rate (%)	(C) Participation Rate Met		(E) Proficient on LA	(F) Percent Proficient on LA	(G) LA Target	(H) Met AMO for LA	(I) Proficient on Mathematics	(J) Percent Proficient in Mathematics	(K) Mathematics Target	(L) Met AMO for Mathematics
All Students	237	235	99.2%	Yes	209	167	79.9%	70.4%	Yes	150	71.8%	58.5%	Yes
AF AM	15	15	N/A	N/A	N/A	N/A	N/A	N/A	N/A	N/A	N/A	N/A	N/A
AKNA/AI	23	23	100%	Yes	N/A	N/A	N/A	N/A	N/A	N/A	N/A	N/A	N/A
Asian/NH/OPI	39	39	100%	Yes	33	23	69.7%	60.2%	Yes	20	60.6%	46.9%	Yes
White	73	71	97.3%	Yes	69	56	81.2%	65.4%	Yes	55	79.7%	52.8%	Yes
Hispanic	38	38	100%	Yes	32	25	78.1%	59.9%	Yes	23	71.9%	46.6%	Yes
ME	49	49	100%	Yes	45	38	84.4%	62.6%	Yes	34	75.6%	49.6%	Yes
EDS	114	114	100%	Yes	100	74	74%	67.4%	Yes	58	58%	55.1%	Yes
SWD	38	37	97.4%	Yes	34	14	41.2%	60.4%	Yes-SH	13	38.2%	47.2%	No
LEP	53	53	100%	Yes	45	32	71.1%	62.6%	Yes	29	64.4%	49.6%	Yes

Attendance Rate: Met

93.4% (Threshold is 85%)

N/A is used to indicate:

- (1) Subgroups with 20 or fewer students enrolled on the first day of testing shall not be included in participation rate calculation.
- (2) Subgroups with 25 or fewer students enrolled for the "full academic year" shall not have the performance score computed.

\* For the groups where the number enrolled is less than or equal to 40, participation is met when no more than two miss the test. Groups can also meet this target using the average of the past two or three years.

\*\* When a group achieves a "Yes" without meeting the listed target, it has done so using either the 99% confidence interval or Safe Harbor.

\*\*\* The results cannot be published without releasing personally identifiable information based upon the EED reporting protocol.

This document was prepared by the ASD Assessment and Evaluation Department.

7/10/2008

Tudor Elementary School  
2007-08 Adequate Yearly Progress  
Growth Report

The AYP growth reports are generated by the Alaska State Department of Education and Early Development. The reports can be found online at: [http://www.asdk12.org/depts/assess\\_eval/AYP/State\\_AS\\_D\\_AYG\\_0708.pdf](http://www.asdk12.org/depts/assess_eval/AYP/State_AS_D_AYG_0708.pdf)

SBA Proficiency Comparison by Grade for Tudor Elementary School																
	Reading Percent Proficient				Writing Percent Proficient				Mathematics Percent Proficient				Science* Percent Proficient			
	04-05	05-06	06-07	07-08	04-05	05-06	06-07	07-08	04-05	05-06	06-07	07-08	04-05	05-06	06-07	07-08
All Students	74.16%	76.34%	78.06%	82.70%	70.21%	72.56%	69.91%	76.37%	67.07%	69.91%	73.91%	71.31%	N/A	N/A	N/A	44.23%
Grade 3	74.68%	73.49%	70.13%	75.00%	69.62%	68.67%	70.13%	70.00%	77.22%	72.62%	76.62%	63.33%	N/A	N/A	N/A	N/A
Grade 4	74.12%	75.00%	79.52%	80.77%	70.59%	70.00%	72.29%	80.77%	64.71%	69.14%	73.81%	80.77%	N/A	N/A	N/A	44.23%
Grade 5	78.08%	77.78%	84.09%	85.96%	72.60%	69.44%	71.59%	80.70%	65.75%	62.50%	71.91%	75.44%	N/A	N/A	N/A	N/A
Grade 6	70.65%	79.27%	77.46%	88.24%	68.48%	81.71%	64.79%	75.00%	61.70%	74.39%	73.61%	67.65%	N/A	N/A	N/A	N/A

\* 2007-08 was the first year Science was administered for grades 4, 8 and 10 on the SBA.

SBA Proficient & Not Proficient by NCLB Groups for Tudor Elementary School								
	Reading		Writing		Mathematics		Science**	
	Percent Proficient	Percent Not Proficient	Percent Proficient	Percent Not Proficient	Percent Proficient	Percent Not Proficient	Percent Proficient	Percent Not Proficient
All Students	83.05%	16.95%	76.69%	23.31%	71.61%	28.39%	44.23%	55.77%
AF AM	80% or more	20% or fewer	73.33%	26.67%	53.33%	46.67%	*	*
AKNA/AI	70.83%	29.17%	62.50%	37.50%	54.17%	45.83%	60% or fewer	40% or more
Asian	85.71%	14.29%	75.00%	25.00%	71.43%	28.57%	60% or fewer	40% or more
NH/OPI	72.73%	27.27%	54.55%	45.45%	45.45%	54.55%	*	*
White	84.51%	15.49%	83.10%	16.90%	80.28%	19.72%	61.11%	38.89%
Hispanic	81.58%	18.42%	78.95%	21.05%	76.32%	23.68%	44.44%	55.56%
ME	85.71%	14.29%	79.59%	20.41%	75.51%	24.49%	60.00%	40.00%
EDS	78.07%	21.93%	69.30%	30.70%	60.53%	39.47%	28.00%	72.00%
Non-EDS	87.70%	12.30%	83.61%	16.39%	81.97%	18.03%	59.26%	40.74%
SWD	45.71%	54.29%	37.14%	62.86%	34.29%	65.71%	80% or fewer	20% or more
Non-SWD	89.55%	10.45%	83.58%	16.42%	78.11%	21.89%	52.50%	47.50%
LEP	52.00%	48.00%	44.00%	56.00%	52.00%	48.00%	75% or fewer	25% or more
Not LEP	86.73%	13.27%	80.57%	19.43%	73.93%	26.07%	53.49%	46.51%
Migrant	70.00%	30.00%	50.00%	50.00%	70.00%	30.00%	*	*
Not Migrant	83.63%	16.37%	77.88%	22.12%	71.68%	28.32%	46.94%	53.06%
Female	85.34%	14.66%	81.90%	18.10%	68.10%	31.90%	48.48%	51.52%
Male	80.83%	19.17%	71.67%	28.33%	75.00%	25.00%	36.84%	63.16%

\* Results cannot be published without releasing personally identifiable information based upon the EED reporting protocol

\*\* 2007-08 was the first year Science was administered for grades 4, 8 and 10 on the SBA.

SBA Mean Scale Score Comparison by NCLB Groups for Tudor Elementary School								
	Reading		Writing		Mathematics		Science***	
	06-07	07-08	06-07	07-08	06-07	07-08	06-07	07-08
All Students	352.40	368.23	349.98	361.29	350.67	354.40	N/A	290.19
AF AM	360.21	369.07	354.59	339.67	351.13	329.67	N/A	*
AKNA/AI	336.41	339.79	332.61	335.46	329.61	329.50	N/A	252.60
Asian**	348.73*	365.61	349.76*	370.25	361.35*	363.21	N/A	243.43
NH/OPI**	N/A	328.27	N/A	301.82	N/A	295.45	N/A	*
White	368.43	386.21	370.22	378.85	371.45	379.54	N/A	310.94
Hispanic	337.23	367.55	327.90	355.71	332.12	347.95	N/A	283.11
ME	353.63	366.84	350.68	367.67	348.37	350.94	N/A	329.40
EDS	340.22	350.57	333.26	338.04	333.62	328.09	N/A	254.88
Non-EDS	371.55	384.73	376.28	383.02	377.90	378.98	N/A	322.89
SWD	287.18	299.23	282.28	281.43	286.26	288.63	N/A	249.08
Non-SWD	364.52	380.24	362.57	375.19	362.51	365.85	N/A	302.53
LEP	335.14	308.72	331.31	299.52	331.96	303.08	N/A	218.89
Not LEP	358.18	375.28	356.23	368.61	357.17	360.48	N/A	305.12
Migrant	320.53	329.10	306.33	331.10	320.07	340.30	N/A	*
Not Migrant	353.97	369.96	352.13	362.62	352.17	355.02	N/A	294.71
Female	354.92	372.94	360.10	374.16	346.82	352.00	N/A	292.70
Male	349.89	363.68	339.93	348.85	354.57	356.72	N/A	285.84

\* Results cannot be published without releasing personally identifiable information based upon the EED reporting protocol

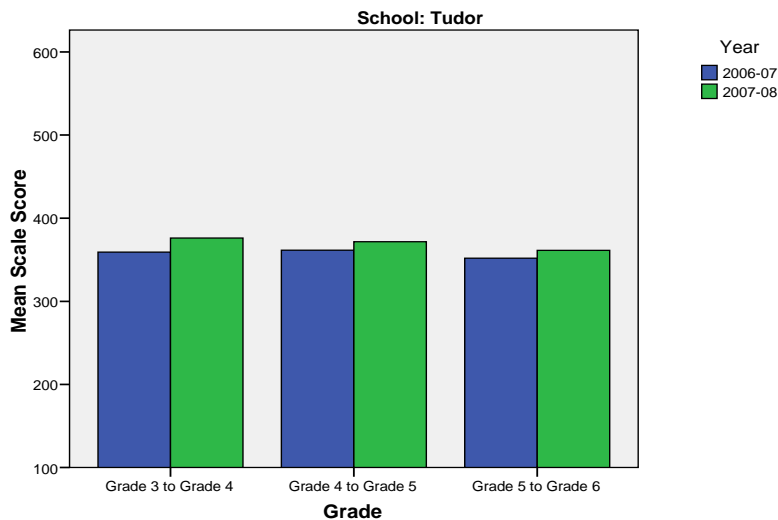
\*\* Prior to 2007-08 the Asian category includes Native Hawaiian/Other Pacific Islander. In 2007-08 Native Hawaiian/Other Pacific Islander is a separate ethnic category.

\*\*\* 2007-08 was the first year Science was administered for grades 4, 8 and 10 on the SBA.

Tudor Elementary School SBA Change Average Scale Score by NCLB Groups: Reading									
	Average Scale Score of Students Tested in District Both Years			Average Scale Score of Students Tested in District Both Years			Average Scale Score of Students Tested in District Both Years		
	Grade 3 in 06-07	Grade 4 in 07-08	Difference	Grade 4-in 06-07	Grade 5 in 07-08	Difference	Grade 5-in 06-07	Grade 6 in 07-08	Difference
All Students	359.20	376.10	16.90	361.57	371.65	10.08	351.80	361.34	9.54
AF AM	*	*	*	*	*	*	360.83	340.00	-20.83
AKNA/AI	342.00	350.20	8.20	*	*	*	342.60	328.40	-14.20
Asian	309.00	339.86	30.86	*	*	*	359.50	354.50	-5.00
NH/OPI	*	*	*	*	*	*	*	*	*
White	373.29	393.53	20.24	374.24	381.18	6.94	380.00	405.93	25.93
Hispanic	349.88	358.75	8.88	321.29	345.57	24.29	350.20	373.80	23.60
ME	400.10	404.20	4.10	354.27	368.80	14.53	332.06	342.63	10.56
EDS	330.64	345.88	15.24	355.89	368.52	12.63	334.89	343.41	8.52
Non-EDS	387.76	406.32	18.56	367.96	375.17	7.21	366.06	376.47	10.41
SWD	302.67	322.25	19.58	258.38	287.38	29.00	272.50	282.25	9.75
Non-SWD	377.05	393.11	16.05	380.77	387.33	6.56	364.24	373.75	9.51
LEP	285.44	309.44	24.00	*	*	*	288.20	302.20	14.00
Not LEP	375.39	390.73	15.34	366.63	376.19	9.56	357.69	366.81	9.13
Migrant	*	*	*	*	*	*	*	*	*
Not Migrant	362.51	380.21	17.70	359.31	371.19	11.88	354.33	364.14	9.81
Female	366.16	384.65	18.48	352.58	363.04	10.46	363.16	370.92	7.76
Male	347.84	362.16	14.32	369.56	379.30	9.74	343.44	354.29	10.85

\* Results cannot be published without releasing personally identifiable information based upon the EED reporting protocol

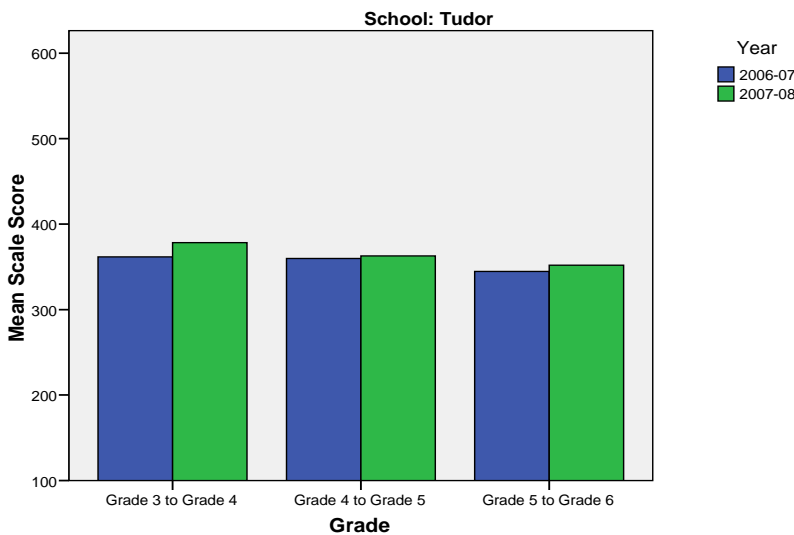
**Change in Mean Scale Score in SBA Reading by Grade Between 2006-07 and 2007-08**



Tudor Elementary School SBA Change Average Scale Score by NCLB Groups: Writing									
	Average Scale Score of Students Tested in District Both Years			Average Scale Score of Students Tested in District Both Years			Average Scale Score of Students Tested in District Both Years		
	Grade 3 in 06-07	Grade 4 in 07-08	Difference	Grade 4- in 06-07	Grade 5 in 07-08	Difference	Grade 5- in 06-07	Grade 6 in 07-08	Difference
All Students	361.66	378.34	16.68	359.82	362.73	2.90	344.64	351.85	7.20
AF AM	*	*	*	*	*	*	332.50	318.33	-14.17
AKNA/AI	342.80	373.60	30.80	*	*	*	320.60	321.00	0.40
Asian	323.43	347.00	23.57	*	*	*	369.17	361.83	-7.33
NH/OPI	*	*	*	*	*	*	*	*	*
White	380.59	387.59	7.00	382.82	373.59	-9.24	368.93	397.21	28.29
Hispanic	342.63	344.75	2.13	328.57	349.29	20.71	346.60	355.30	8.70
ME	398.30	437.10	38.80	333.53	352.40	18.87	336.06	344.25	8.19
EDS	316.08	337.32	21.24	342.89	351.48	8.59	318.15	332.74	14.59
Non-EDS	407.24	419.36	12.12	378.88	375.38	-3.50	367.00	367.97	0.97
SWD	302.75	301.83	-0.92	280.25	293.63	13.38	260.88	246.88	-14.00
Non-SWD	380.26	402.50	22.24	374.63	375.58	0.95	357.78	368.31	10.53
LEP	282.44	314.89	32.44	*	*	*	268.20	265.00	-3.20
Not LEP	379.05	392.27	13.22	365.54	366.29	0.75	351.72	359.89	8.17
Migrant	*	*	*	*	*	*	*	*	*
Not Migrant	367.15	384.30	17.15	358.75	361.25	2.50	346.96	353.91	6.95
Female	373.81	395.03	21.23	370.25	370.38	0.13	363.84	366.72	2.88
Male	341.84	351.11	9.26	350.56	355.93	5.37	330.53	340.91	10.38

\* Results cannot be published without releasing personally identifiable information based upon the EED reporting protocol

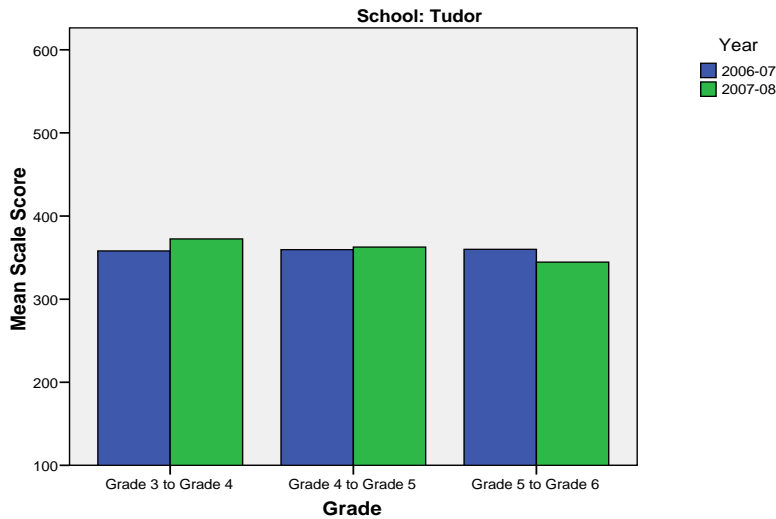
**Change in Mean Scale Score in SBA Writing by Grade between 2006-07 and 2007-08**



Tudor Elementary School SBA Change Average Scale Score by NCLB Groups: Mathematics									
	Average Scale Score of Students Tested in District Both Years			Average Scale Score of Students Tested in District Both Years			Average Scale Score of Students Tested in District Both Years		
	Grade 3 in 06-07	Grade 4 in 07-08	Difference	Grade 4- in 06-07	Grade 5 in 07-08	Difference	Grade 5- in 06-07	Grade 6 in 07-08	Difference
All Students	358.04	372.50	14.46	359.53	362.73	3.20	359.93	344.49	-15.44
AF AM	*	*	*	*	*	*	324.50	314.67	-9.83
AKNA/AI	356.20	366.00	9.80	*	*	*	323.80	320.60	-3.20
Asian	326.71	336.71	10.00	*	*	*	400.33	383.67	-16.67
NH/OPI	*	*	*	*	*	*	*	*	*
White	375.71	383.06	7.35	393.06	391.29	-1.76	399.79	381.14	-18.64
Hispanic	344.25	342.88	-1.38	338.71	346.43	7.71	352.80	347.20	-5.60
ME	384.20	418.70	34.50	327.07	331.00	3.93	342.50	324.00	-18.50
EDS	324.68	341.36	16.68	338.81	341.15	2.33	319.11	308.41	-10.70
Non-EDS	391.40	403.64	12.24	382.83	387.00	4.17	394.38	374.94	-19.44
SWD	301.42	314.42	13.00	322.50	299.13	-23.38	279.63	265.75	-13.88
Non-SWD	375.92	390.84	14.92	366.42	374.56	8.14	372.53	356.84	-15.69
LEP	297.56	321.67	24.11	*	*	*	294.40	299.60	5.20
Not LEP	371.32	383.66	12.34	363.90	365.79	1.90	366.00	348.65	-17.35
Migrant	*	*	*	*	*	*	*	*	*
Not Migrant	363.83	374.64	10.81	358.58	361.04	2.46	361.16	346.35	-14.81
Female	361.13	369.90	8.77	352.58	363.04	10.46	360.60	341.32	-19.28
Male	353.00	376.74	23.74	365.70	362.44	-3.26	359.44	346.82	-12.62

\* Results cannot be published without releasing personally identifiable information based upon the EED reporting protocol

**Change in Mean Scale Score in SBA Mathematics by Grade between 2006-07 and 2007-08**



Reading: SBA Results Compared for Tudor Elementary School, District and State Grades 3 Through 6															
	% Advanced Proficient			% Proficient			% Below Proficient			% Far Below Proficient			% Tested		
	School	District	State	School	District	State	School	District	State	School	District	State	School	District	State
All Students	31.36%	39.70%	35.67%	51.69%	43.89%	45.50%	13.14%	11.60%	13.02%	3.81%	4.80%	5.80%	99.58%	98.15%	97.98%
AF AM	26.67%	20.73%	22.99%	66.67%	54.18%	53.49%	*	17.79%	16.46%	*	7.30%	7.06%	100.00%	98.04%	97.49%
AKNA/AI	12.50%	20.23%	14.62%	58.33%	51.11%	48.17%	*	18.54%	24.83%	*	10.11%	12.37%	100.00%	96.88%	97.59%
Asian	21.43%	30.22%	28.26%	64.29%	48.71%	51.04%	*	15.32%	15.32%	*	5.75%	5.38%	100.00%	97.64%	97.67%
NH/OPI	*	14.67%	N/A	63.64%	51.03%	N/A	*	24.59%	N/A	*	9.71%	N/A	100.00%	98.98%	N/A
White	46.48%	52.75%	47.28%	38.03%	38.06%	42.41%	11.27%	6.69%	7.27%	4.23%	2.50%	3.03%	97.26%	98.68%	98.28%
Hispanic	34.21%	32.35%	31.74%	47.37%	46.43%	48.60%	10.53%	14.67%	13.66%	7.89%	6.55%	6.00%	100.00%	97.14%	97.32%
ME	28.57%	33.26%	34.76%	57.14%	48.25%	47.75%	*	13.47%	12.80%	*	5.01%	4.70%	100.00%	98.15%	98.03%
EDS	18.42%	22.85%	21.47%	59.65%	49.71%	48.65%	16.67%	19.04%	20.31%	5.26%	8.40%	9.57%	100.00%	97.50%	96.44%
Not EDS	43.44%	51.44%	46.31%	44.26%	39.84%	43.15%	9.84%	6.42%	7.56%	2.46%	2.30%	2.98%	99.19%	98.61%	99.16%
SWD	*	10.08%	9.29%	*	37.10%	37.96%	37.14%	32.15%	31.20%	17.14%	20.67%	21.55%	97.22%	94.28%	93.60%
Non-SWD	36.32%	45.02%	40.09%	53.23%	45.12%	46.77%	8.96%	7.91%	9.98%	1.49%	1.95%	3.17%	100.00%	98.88%	98.75%
LEP	*	4.97%	3.12%	*	39.93%	38.06%	32.00%	37.14%	38.40%	16.00%	17.96%	20.42%	100.00%	94.25%	96.11%
Not LEP	35.07%	42.78%	39.95%	51.66%	44.25%	46.48%	10.90%	9.33%	9.68%	2.37%	3.64%	3.88%	99.53%	98.51%	98.23%
Migrant	*	27.01%	17.29%	70.00%	50.34%	48.58%	*	16.44%	23.78%	*	6.21%	10.35%	100.00%	98.35%	98.50%
Not Migrant	32.74%	40.26%	36.97%	50.88%	43.61%	45.29%	12.83%	11.38%	12.26%	3.54%	4.74%	5.48%	99.56%	98.14%	97.94%
Female	29.31%	44.40%	39.45%	56.03%	43.41%	45.33%	*	8.75%	10.85%	*	3.44%	4.37%	99.15%	98.39%	98.31%
Male	33.33%	35.15%	32.09%	47.50%	44.37%	45.67%	13.33%	14.36%	15.08%	5.83%	6.13%	7.16%	100.00%	97.92%	97.66%

\* Results cannot be published without releasing personally identifiable information based upon the EED reporting protocol

Writing: SBA Results Compared for Tudor Elementary School, District and State Grades 3 Through 6															
	% Advanced Proficient			% Proficient			% Below Proficient			% Far Below Proficient			% Tested		
	School	District	State	School	District	State	School	District	State	School	District	State	School	District	State
All Students	30.93%	34.87%	30.49%	45.76%	44.25%	44.50%	20.76%	18.78%	22.32%	2.54%	2.10%	2.69%	99.58%	98.11%	97.96%
AF AM	20.00%	20.71%	20.51%	53.33%	46.71%	48.68%	*	28.71%	27.18%	*	3.88%	3.63%	100.00%	98.15%	97.71%
AKNA/AI	20.83%	17.15%	12.11%	41.67%	45.31%	41.05%	*	33.38%	40.69%	*	4.15%	6.15%	100.00%	96.51%	97.64%
Asian	32.14%	30.17%	28.49%	42.86%	45.92%	45.93%	*	21.33%	23.31%	*	2.58%	2.27%	100.00%	97.56%	97.67%
NH/OPI	*	14.02%	N/A	45.45%	42.89%	N/A	36.36%	39.38%	N/A	*	3.71%	N/A	100.00%	99.18%	N/A
White	39.44%	45.85%	40.04%	43.66%	41.91%	44.71%	*	11.26%	13.97%	*	0.99%	1.28%	97.26%	98.66%	98.22%
Hispanic	34.21%	27.33%	27.00%	44.74%	47.25%	48.36%	*	22.54%	22.23%	*	2.88%	2.41%	100.00%	97.07%	97.36%
ME	28.57%	28.51%	29.14%	51.02%	47.68%	47.29%	*	21.31%	21.37%	*	2.51%	2.20%	100.00%	98.15%	97.96%
EDS	19.30%	18.92%	17.53%	50.00%	47.34%	45.15%	28.07%	29.95%	32.95%	2.63%	3.79%	4.37%	100.00%	97.50%	96.53%
Not EDS	41.80%	45.99%	40.21%	41.80%	42.10%	44.01%	13.93%	10.99%	14.35%	2.46%	0.92%	1.44%	99.19%	98.54%	99.06%
SWD	*	7.09%	6.94%	*	38.82%	37.02%	48.57%	45.96%	47.34%	14.29%	8.12%	8.69%	97.22%	94.28%	93.97%
Non-SWD	35.32%	39.86%	34.45%	48.26%	45.23%	45.76%	*	13.89%	18.11%	*	1.02%	1.69%	100.00%	98.83%	98.66%
LEP	*	4.71%	3.14%	44.00%	37.05%	30.66%	48.00%	50.57%	56.76%	*	7.67%	9.44%	100.00%	94.25%	96.18%
Not LEP	34.60%	37.55%	34.08%	45.97%	44.89%	46.32%	17.54%	15.96%	17.79%	1.90%	1.60%	1.81%	99.53%	98.47%	98.20%
Migrant	*	21.44%	14.20%	30.00%	48.58%	42.55%	50.00%	26.63%	38.57%	*	3.35%	4.68%	100.00%	98.51%	98.58%
Not Migrant	31.42%	35.46%	31.63%	46.46%	44.06%	44.64%	19.47%	18.43%	21.18%	2.65%	2.04%	2.55%	99.56%	98.09%	97.92%
Female	33.62%	42.63%	37.48%	48.28%	42.50%	43.42%	*	13.62%	17.40%	*	1.26%	1.70%	99.15%	98.32%	98.22%
Male	28.33%	27.36%	23.87%	43.33%	45.96%	45.52%	25.00%	23.78%	26.98%	3.33%	2.91%	3.63%	100.00%	97.90%	97.72%

\* Results cannot be published without releasing personally identifiable information based upon the EED reporting protocol

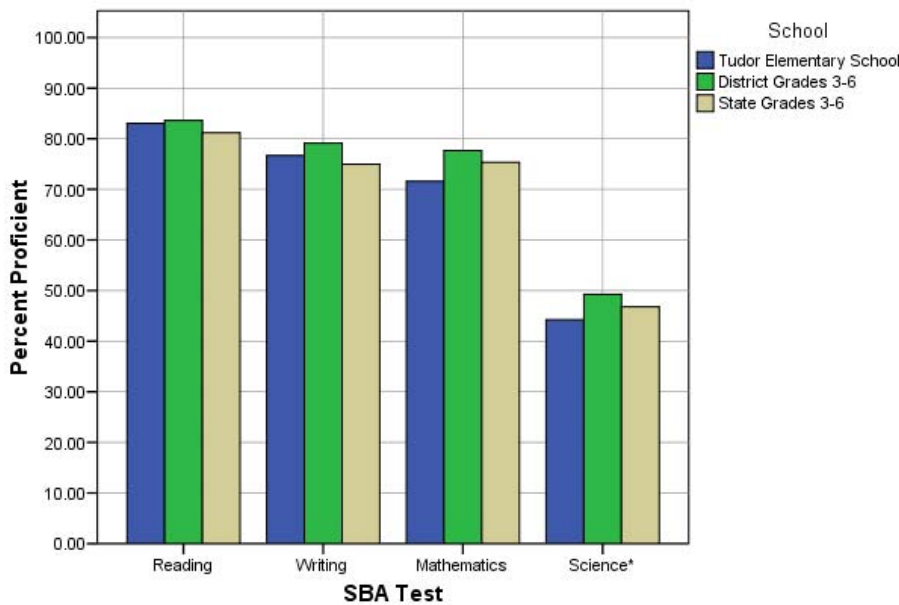
Mathematics: SBA Results Compared for Tudor Elementary School, District and State Grades 3 Through 6															
	% Advanced Proficient			% Proficient			% Below Proficient			% Far Below Proficient			% Tested		
	School	District	State	School	District	State	School	District	State	School	District	State	School	District	State
All Students	34.32%	39.81%	36.08%	37.29%	37.84%	39.26%	19.07%	12.46%	13.78%	9.32%	9.88%	10.88%	99.58%	98.52%	98.12%
AF AM	20.00%	19.48%	22.09%	33.33%	40.14%	41.60%	*	20.19%	18.61%	*	20.19%	17.70%	100.00%	98.38%	97.78%
AKNA/AI	20.83%	23.20%	18.26%	33.33%	39.51%	39.14%	33.33%	19.22%	21.79%	12.50%	18.07%	20.81%	100.00%	96.96%	97.72%
Asian	35.71%	37.02%	34.29%	35.71%	41.20%	41.23%	*	13.76%	14.10%	*	8.03%	10.38%	100.00%	99.27%	98.99%
NH/OPI	*	18.52%	N/A	27.27%	38.07%	N/A	*	20.16%	N/A	36.36%	23.25%	N/A	100.00%	99.39%	N/A
White	49.30%	51.12%	45.75%	30.99%	35.15%	38.35%	12.68%	8.41%	9.81%	7.04%	5.32%	6.09%	97.26%	98.69%	98.17%
Hispanic	28.95%	31.85%	31.11%	47.37%	40.04%	42.19%	15.79%	15.02%	15.10%	7.89%	13.09%	11.60%	100.00%	98.66%	98.47%
ME	30.61%	33.75%	35.45%	44.90%	41.21%	40.61%	12.24%	13.93%	13.30%	12.24%	11.11%	10.64%	100.00%	98.26%	98.00%
EDS	19.30%	24.26%	23.31%	41.23%	41.50%	40.98%	24.56%	17.54%	18.60%	14.91%	16.70%	17.11%	100.00%	98.14%	96.77%
Not EDS	48.36%	50.70%	45.67%	33.61%	35.28%	37.96%	13.93%	8.91%	10.16%	4.10%	5.12%	6.21%	99.19%	98.79%	99.16%
SWD	11.43%	12.52%	12.06%	22.86%	31.53%	32.14%	34.29%	23.68%	23.60%	31.43%	32.27%	32.20%	97.22%	94.19%	93.99%
Non-SWD	38.31%	44.69%	40.12%	39.80%	38.97%	40.45%	16.42%	10.46%	12.13%	5.47%	5.88%	7.30%	100.00%	99.34%	98.85%
LEP	*	8.22%	6.05%	*	36.74%	34.10%	28.00%	24.50%	27.43%	20.00%	30.54%	32.42%	100.00%	97.95%	97.56%
Not LEP	37.44%	42.73%	40.09%	36.49%	37.94%	39.95%	18.01%	11.35%	11.96%	8.06%	7.98%	8.01%	99.53%	98.57%	98.19%
Migrant	*	30.94%	22.37%	50.00%	43.65%	40.27%	*	14.21%	20.36%	*	11.20%	17.00%	100.00%	98.68%	98.54%
Not Migrant	34.96%	40.21%	37.05%	36.73%	37.58%	39.19%	19.03%	12.38%	13.31%	9.29%	9.83%	10.45%	99.56%	98.51%	98.09%
Female	34.48%	41.01%	36.83%	33.62%	38.32%	39.88%	23.28%	11.59%	13.34%	8.62%	9.09%	9.96%	99.15%	98.71%	98.31%
Male	34.17%	38.66%	35.38%	40.83%	37.38%	38.67%	15.00%	13.30%	14.20%	10.00%	10.66%	11.75%	100.00%	98.34%	97.94%

\* Results cannot be published without releasing personally identifiable information based upon the EED reporting protocol

Science: SBA Results Compared for Tudor Elementary School, District and State Grade 4															
	% Advanced Proficient			% Proficient			% Below Proficient			% Far Below Proficient			% Tested		
	School	District	State	School	District	State	School	District	State	School	District	State	School	District	State
All Students	21.15%	23.68%	22.1%	23.08%	25.57%	24.7%	34.62%	31.70%	31.3%	21.15%	19.06%	21.9%	100.00%	97.81%	95.35%
AF AM	*	9.18%	8.9%	*	18.84%	23.3%	*	39.13%	38.0%	*	32.85%	29.8%	N/A	98.57%	94.49%
AKNA/AI	*	6.54%	6.8%	*	21.50%	14.2%	*	42.99%	35.2%	*	28.97%	43.8%	100.00%	96.40%	94.98%
Asian	*	10.18%	13.4%	*	21.40%	19.4%	71.43%	39.30%	37.5%	*	29.12%	29.7%	100.00%	98.28%	97.39%
NH/OPI	*	6.57%	N/A	*	8.03%	N/A	*	34.31%	N/A	*	51.09%	N/A	100.00%	98.56%	N/A
White	27.78%	36.40%	32.3%	33.33%	29.08%	29.9%	22.22%	25.33%	27.3%	16.67%	9.19%	10.5%	100.00%	97.87%	94.97%
Hispanic	*	16.17%	18.2%	*	26.15%	26.0%	33.33%	32.08%	33.9%	*	25.61%	21.9%	100.00%	97.12%	96.39%
ME	40.00%	16.06%	18.5%	*	26.12%	26.8%	30.00%	37.47%	35.9%	*	20.34%	18.7%	100.00%	98.32%	96.90%
EDS	*	8.34%	11.0%	*	22.44%	20.1%	36.00%	38.10%	34.7%	36.00%	31.12%	34.2%	100.00%	97.73%	94.99%
Not EDS	33.33%	35.00%	31.2%	25.93%	27.88%	28.5%	*	26.97%	28.5%	*	10.15%	11.9%	100.00%	97.87%	95.64%
SWD	*	8.38%	7.7%	*	16.38%	15.2%	50.00%	36.57%	36.6%	33.33%	38.67%	40.5%	100.00%	93.25%	91.70%
Non-SWD	25.00%	26.43%	24.7%	27.50%	27.22%	26.4%	30.00%	30.82%	30.4%	17.50%	15.53%	18.5%	100.00%	98.68%	96.04%
LEP	*	2.00%	1.5%	*	5.14%	3.8%	44.44%	34.00%	28.3%	55.56%	58.86%	66.5%	100.00%	96.15%	95.67%
Not LEP	25.58%	26.13%	25.2%	27.91%	27.88%	27.9%	32.56%	31.44%	31.8%	13.95%	14.55%	15.1%	100.00%	98.00%	95.30%
Migrant	*	9.70%	9.0%	*	26.87%	15.3%	*	39.55%	34.3%	*	23.88%	41.4%	100.00%	97.10%	97.32%
Not Migrant	22.45%	24.24%	23.0%	24.49%	25.51%	25.3%	34.69%	31.38%	31.1%	18.37%	18.86%	20.5%	100.00%	97.84%	95.21%
Female	21.21%	22.73%	20.8%	27.27%	25.78%	25.2%	30.30%	33.63%	32.6%	21.21%	17.87%	21.4%	100.00%	98.05%	95.43%
Male	21.05%	24.61%	23.4%	15.79%	25.36%	24.2%	42.11%	29.80%	30.1%	21.05%	20.23%	22.3%	100.00%	97.58%	95.27%

\* Results cannot be published without releasing personally identifiable information based upon the EED reporting protocol

2007-08 SBA Results Compared for Tudor Elementary School, District and State

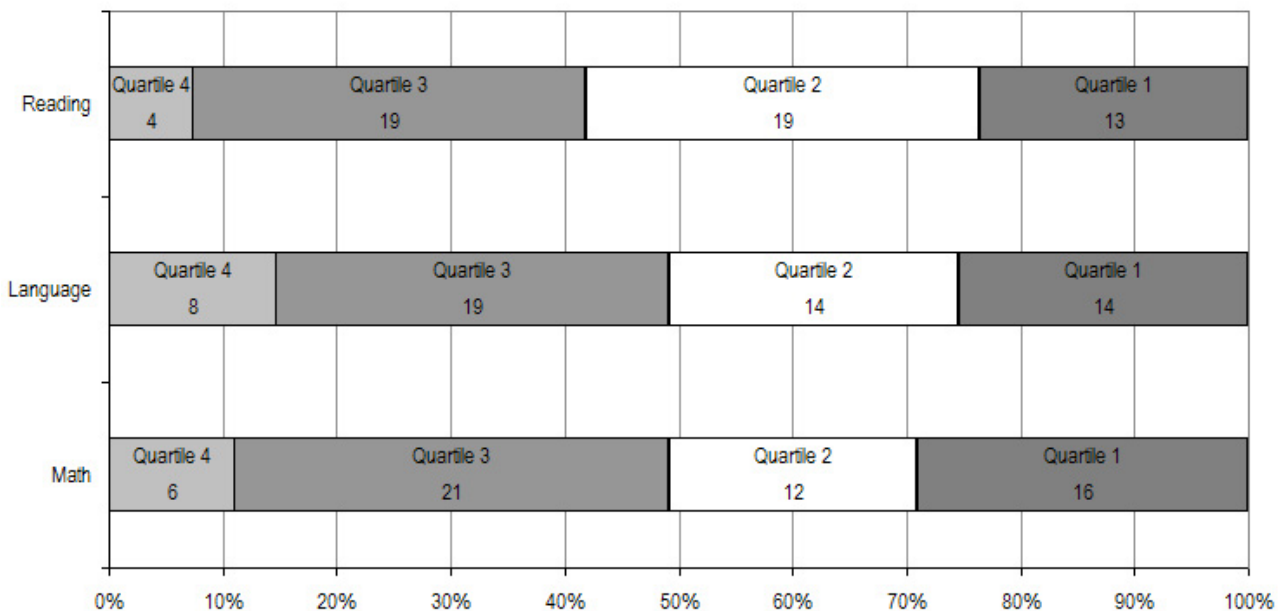


\* 2007-08 was the first year Science was administered for grades 4, 8 and 10 on the SBA.

Tudor Elementary School TerraNova Grade 5 Percent in Each Quartile								
Reading	Above Average		Average				Below Average	
	4th Quartile (76-99 percentile)		3rd Quartile (51-75 percentile)		2nd Quartile (26-50 percentile)		1st Quartile (1-25 percentile)	
	School	District	School	District	School	District	School	District
07-08	7.27%	25.65%	34.55%	24.08%	34.55%	23.73%	23.64%	26.55%
06-07	19.0%	33.1%	28.6%	26.1%	32.1%	23.6%	20.2%	17.2%
05-06	14.1%	30.4%	31.0%	26.8%	28.2%	24.5%	26.8%	18.3%
04-05	25.0%	29.2%	25.0%	27.6%	22.4%	24.5%	27.6%	18.7%
03-04	15.6%	30.6%	35.1%	26.9%	29.9%	24.2%	19.5%	18.3%
<b>Language</b>								
07-08	14.55%	26.79%	34.55%	27.20%	25.45%	24.12%	25.45%	21.89%
06-07	25.0%	34.7%	23.8%	26.9%	28.6%	21.4%	22.6%	17.0%
05-06	22.5%	34.0%	26.8%	26.5%	26.8%	22.0%	23.9%	17.5%
04-05	27.6%	32.1%	25.0%	28.3%	21.1%	21.2%	26.3%	18.4%
03-04	20.8%	34.1%	28.6%	26.5%	33.8%	21.7%	16.9%	17.7%
<b>Mathematics</b>								
07-08	10.91%	25.45%	38.18%	26.40%	21.82%	24.47%	29.09%	23.68%
06-07	21.2%	29.7%	24.7%	31.6%	28.2%	21.2%	25.9%	17.4%
05-06	23.9%	28.4%	21.1%	31.9%	25.4%	22.3%	29.6%	17.5%
04-05	23.7%	26.9%	23.7%	31.1%	25.0%	22.9%	27.6%	19.1%
03-04	22.1%	28.3%	28.6%	29.3%	32.5%	22.6%	16.9%	19.8%

The double bold line indicates a change from the TerraNova 2<sup>nd</sup> edition to the TerraNova 3<sup>rd</sup> edition.

2007-08 TerraNova 3rd Edition Grade 5 Percent and Count of Students in Each Quartile For Tudor Elementary School



Climate Survey Results for Tudor Elementary School

The Anchorage School District administered the School Climate and Connectedness Surveys in spring 2008 to students in grades 5-12, all school staff and parents/guardians of students in grades K-12. The surveys were done to provide schools with information about perceptions and experiences related to school climate for use in setting school goals redirecting resources. In the spring of 2008 grades 3 and 4 students were involved in a pilot survey for measuring school climate and connectedness. The results are currently under review by the American Institutes for Research.

Respondents were asked to answer a series of questions that were related to a certain concept. For each item, there were five options from which to choose a response. The answer options ranged from strongly disagree (1) to strongly agree (5).

Student Survey Response Rate Grades 5-12			
	Tudor Elementary School	Overall Elementary Schools	District**
# Surveys Completed	103	5,579	21,629
# Reportable Surveys	90	4,969	18,654
# Students Enrolled*	126	6,331	28,945
Reportable Response Rate	71.43%	78.49%	64.45%

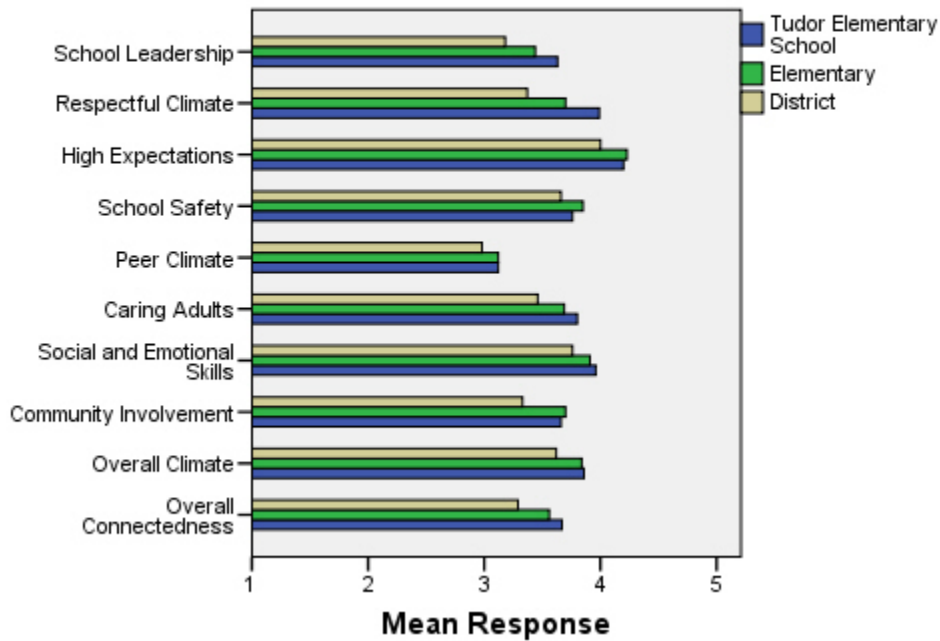
\*Number enrolled as of April 1, 2008

\*\*District data does not include KCC responses

Each question in the survey related to a factor or concept, and a score was calculated based on the mean response for the questions related to each factor. The factors measured in the survey were:

- **School Leadership and Student Involvement:** This factor reflects students' feelings about the decision making of school leaders as well as student participation in the school governance. Students selected responses between 1 and 5 where 1 indicates a low level of school leadership and student involvement and 5 indicates a high level of school leadership and student involvement.
- **Respectful Climate:** This factor reflects students' feelings about fairness of rules and respect for students' contributions. Students selected responses between 1 and 5 where 1 indicates a lack of a respectful climate and 5 indicates a highly respectful climate for students.
- **High Expectations:** This factor reflects students' feelings about their own expectations as well as those of adults in their school and community. Students selected responses between 1 and 5 where 1 indicates a lack of high expectations and 5 indicates a high level of high expectations.
- **School Safety:** This factor reflects students' feelings about bullies and gangs at school as well as general crime and violence in the community. Students selected responses between 1 and 5 where 1 indicates a low level of school safety and 5 indicates a high level of school safety.
- **Peer Climate:** This factor reflects students' feelings about how respectful students are to one another and how helpful students are to other students. Students selected responses between 1 and 5 where 1 indicates a more negative peer climate and 5 indicates a very positive peer climate at the school.
- **Caring Adults:** This factor reflects students' feelings about how close they feel to adults in the school. Students selected responses between 1 and 5 where 1 indicates a lack of caring adult relationships and 5 indicates strong caring adult relationships at the school.
- **Social and Emotional Learning:** This factor reflects students' ability to think about the consequences of their actions and to empathize with others. Students selected responses between 1 and 5 where 1 indicates that students at the school perceive themselves as having poorer social and emotional learning, and 5 indicates higher levels of social and emotional learning.
- **Community Involvement:** This factor reflects students' feelings about how supportive and welcoming the school is with parents and the community. Students selected responses between 1 and 5 where 1 indicates a less supportive and welcoming environment and 5 indicates a more supportive and welcoming environment.
- **Overall Climate:** The overall climate score was computed as the mean of three scales: school leadership, high expectations and school safety.
- **Overall Connectedness:** Overall connectedness score was computed as a mean of four scales: respectful climate, peer climate, caring adults and community involvement.

### Climate and Connectedness Student Survey - Tudor



Student Survey Mean Response by Factors Related to School Climate - Overall District			
	Tudor Elementary School	Overall Elementary Schools	District
School Leadership	3.63	3.44	3.18
Respectful Climate	3.99	3.70	3.37
High Expectations	4.20	4.23	4.00
School Safety	3.76	3.85	3.66
Peer Climate	3.12	3.12	2.98
Caring Adults	3.80	3.69	3.46
Social and Emotional Skills	3.96	3.91	3.76
Community Involvement	3.66	3.70	3.33
Overall Climate	3.86	3.84	3.62
Overall Connectedness	3.67	3.56	3.29

Range is from a low of 1 to a high of 5

Students were also asked to answer questions related to school danger. The following table provides the responses for those questions:

Student Survey Results of the School Danger Questions - Percent of Students Responding in Each Category					
	0 Times	1-2 Times	3-6 Times	7-12 Times	> 12 Times
<b>Tudor Elementary School</b>					
Under the influence of drugs?	89.77%	6.82%	3.41%	0.00%	0.00%
Under the influence of alcohol?	90.80%	5.75%	3.45%	0.00%	0.00%
Destroy things (vandalism)?	50.00%	32.56%	11.63%	4.65%	1.16%
Get into fights?	9.09%	40.91%	28.41%	10.23%	11.36%
Steal things?	53.41%	28.41%	6.82%	5.68%	5.68%
Threaten or bully?	30.68%	25.00%	26.14%	5.68%	12.50%
Under the influence of inhalants?	67.82%	17.24%	10.34%	2.30%	2.30%
Carry weapons?	77.27%	18.18%	3.41%	0.00%	1.14%
<b>Overall Elementary Schools</b>					
Under the influence of drugs?	91.87%	5.65%	1.22%	0.31%	0.96%
Under the influence of alcohol?	91.42%	6.01%	1.16%	0.51%	0.90%
Destroy things (vandalism)?	46.82%	32.08%	12.45%	3.30%	5.36%
Get into fights?	22.32%	35.75%	22.56%	7.96%	11.41%
Steal things?	49.79%	27.92%	12.01%	4.33%	5.95%
Threaten or bully?	32.34%	28.83%	17.08%	7.78%	13.97%
Under the influence of inhalants?	71.03%	17.07%	6.14%	2.63%	3.12%
Carry weapons?	79.22%	15.35%	3.17%	0.59%	1.68%
<b>District</b>					
Under the influence of drugs?	60.45%	15.05%	9.54%	3.92%	11.04%
Under the influence of alcohol?	63.11%	16.37%	8.90%	4.43%	7.19%
Destroy things (vandalism)?	41.26%	29.47%	15.45%	5.88%	7.94%
Get into fights?	26.40%	35.20%	21.96%	7.11%	9.33%
Steal things?	44.80%	25.68%	13.81%	6.98%	8.74%
Threaten or bully?	32.21%	26.21%	16.68%	9.27%	15.63%
Under the influence of inhalants?	72.79%	14.21%	5.66%	2.48%	4.87%
Carry weapons?	69.45%	19.15%	5.34%	2.01%	4.06%

Student Survey Results of the Mean Factor Score by Ethnicity (Self-Reported)							
	AKNA/AI	AF AM	Hispanic	Asian/NH	White	Other	Multi-Ethnic
<b>Tudor Elementary School</b>							
School Leadership	3.80	3.36	3.83	3.72	3.47	3.40	3.78
Respectful Climate	4.06	3.72	4.01	4.07	4.01	3.83	4.08
High Expectations	4.32	4.06	4.32	4.14	4.22	3.98	4.29
School Safety	3.98	3.33	3.75	3.50	4.06	3.35	3.89
Peer Climate	3.49	2.73	3.20	3.25	2.93	2.89	3.34
Caring Adults	3.82	3.60	4.20	3.57	3.63	3.78	3.96
Social and Emotional Skills	3.92	3.83	4.06	4.01	3.98	3.96	3.88
Community Involvement	3.90	3.41	3.69	3.51	3.73	3.45	3.73
Overall Climate	3.95	3.51	3.99	3.84	3.92	3.63	3.89
Overall Connectedness	3.82	3.29	3.80	3.77	3.58	3.49	3.82
<b>Overall Elementary Schools</b>							
School Leadership	3.56	3.50	3.52	3.55	3.37	3.44	3.42
Respectful Climate	3.75	3.60	3.66	3.72	3.71	3.69	3.63
High Expectations	4.12	4.23	4.23	4.22	4.26	4.19	4.25
School Safety	3.75	3.63	3.73	3.68	4.03	3.66	3.79
Peer Climate	3.12	2.94	3.12	3.18	3.16	3.05	3.05
Caring Adults	3.64	3.73	3.64	3.59	3.74	3.60	3.76
Social and Emotional Skills	3.86	3.84	3.91	3.95	3.93	3.90	3.89
Community Involvement	3.66	3.60	3.67	3.66	3.75	3.66	3.70
Overall Climate	3.81	3.79	3.84	3.81	3.89	3.76	3.82
Overall Connectedness	3.56	3.49	3.51	3.53	3.60	3.49	3.56
<b>District</b>							
School Leadership	3.33	3.14	3.19	3.28	3.14	3.17	3.15
Respectful Climate	3.48	3.18	3.32	3.39	3.39	3.37	3.33
High Expectations	3.98	3.94	3.96	4.02	4.02	4.00	4.01
School Safety	3.60	3.48	3.55	3.47	3.78	3.51	3.62
Peer Climate	3.01	2.85	2.94	3.05	3.00	2.92	2.93
Caring Adults	3.49	3.43	3.37	3.33	3.51	3.42	3.46
Social and Emotional Skills	3.73	3.66	3.73	3.81	3.78	3.75	3.74
Community Involvement	3.37	3.22	3.31	3.29	3.34	3.34	3.31
Overall Climate	3.64	3.52	3.57	3.59	3.65	3.56	3.60
Overall Connectedness	3.33	3.17	3.24	3.26	3.31	3.26	3.27

The response rate is not high enough to provide statistically reliable results for Tudor Elementary School's Staff Survey Results.

Parent/Guardian Survey Response Rate			
	Tudor Elementary School	Overall Elementary Schools	District**
# Surveys Completed	66	3,933	7,415
# Primary Guardians*	401	23,668	48,693
Response Rate	16.46%	16.62%	15.23%

\*Number students enrolled as of April 1, 2008 without dual guardians included

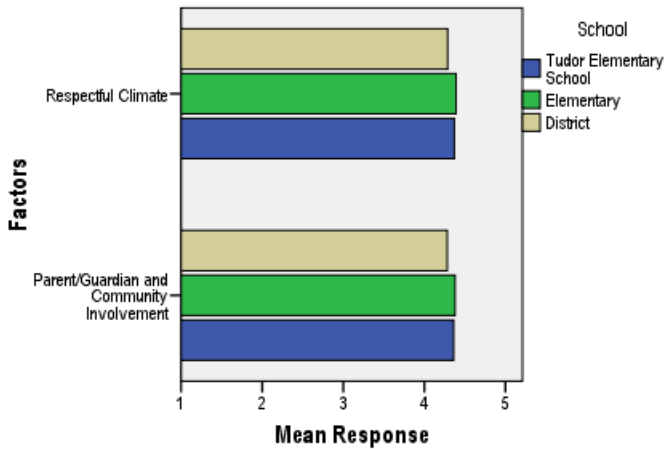
\*\*District data

- 1) does not include KCC responses;
- 2) does include responses without a school designation

Two factors are calculated from the Parent/Guardian Survey. All results other than the factor scores below are reported by individual question: questions in the graphs are condensed phrases from the full question, while questions in the tables are the full question.

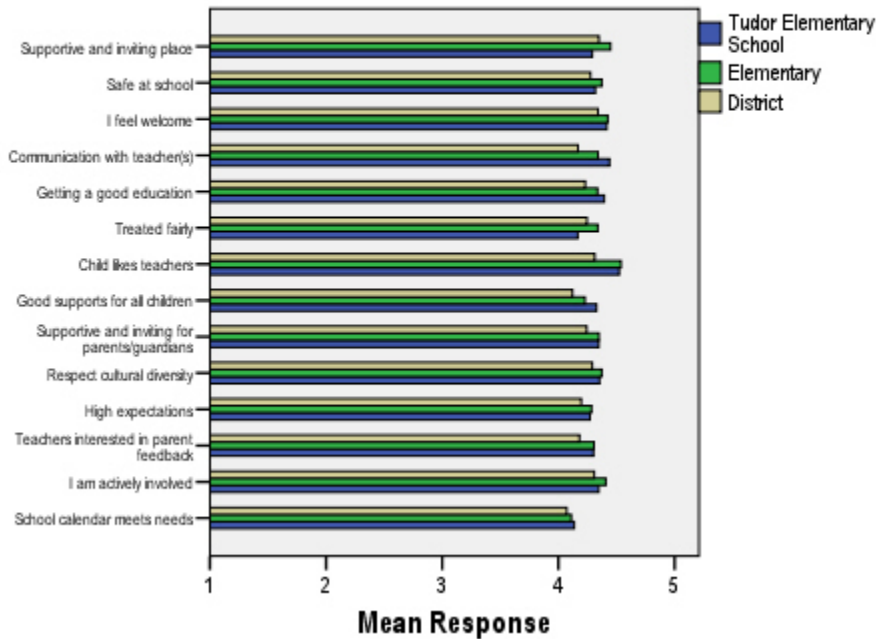
- **Respectful Climate:** This factor is calculated by determining the mean of five questions: 1) My child’s school is a supportive and inviting place, 2) I feel welcome at this school, 3) I am satisfied with communication with my child’s teacher(s), 4) This school is a supportive and inviting place for parents/guardians and 5) Adults at this school respect cultural diversity.
- **Parent/Guardian and Community Involvement:** This factor is calculated by determining the mean of five questions: 1) I feel welcome at this school, 2) This school is a supportive and inviting place for parents/guardians, 3) Adults at this school respect cultural diversity, 4) Teacher’s at my child’s school are interested in what I have to say and 5) I feel like I am actively involved in my child’s education.

**Parent/Guardian Survey Mean Factor Scores (Range is from a low of 1 to a high of 5)**



Parent/Guardian Factor Scores			
	Tudor Elementary School	Overall Elementary Schools	District
Respectful Climate	4.37	4.39	4.29
Parent/Guardian and Community Involvement	4.36	4.38	4.28

**Climate and Connectedness Parent/Guardian Survey - Tudor**



Parent/Guardian Mean Response by Questions Related to School Climate - Overall

	Tudor Elementary School	Overall Elementary Schools	District
My child's school is a supportive and inviting place	4.29	4.45	4.35
My child is safe at school	4.32	4.37	4.28
I feel welcome at this school	4.42	4.43	4.34
I am satisfied with communication with my child's teacher(s)	4.44	4.34	4.17
My child is getting a good education at this school	4.39	4.34	4.23
My child is treated fairly at school	4.17	4.34	4.25
My child likes his/her teachers	4.52	4.54	4.31
At this school, there are good supports for all children, including children with learning disabilities	4.33	4.23	4.12
This school is a supportive and inviting place for parents/guardians	4.35	4.35	4.24
Adults at this school respect cultural diversity	4.35	4.37	4.29
Adults at this school have high expectations of my child	4.27	4.29	4.20
Teachers at my child's school are interested in what I have to say	4.30	4.31	4.18
I feel like I am actively involved in my child's education	4.35	4.41	4.31
The district's school calendar meets the needs of my child and our family	4.14	4.11	4.07

Range is from a low of 1 to a high of 5

Parent/Guardian Mean Response by Questions Related to School Climate by Ethnicity (Self-Reported)							
Tudor Elementary School	AKNA/AI	AF AM	Hispanic	Asian/NH	White	Other	ME
My child's school is a supportive and inviting place	4.17	4.25	4.00	4.41	4.29	4.00	4.17
My child is safe at school	3.83	4.25	4.40	4.29	4.44	4.00	4.17
I feel welcome at this school	4.00	4.75	4.60	4.41	4.50	3.00	4.17
I am satisfied with communication with my child's teacher(s)	4.33	4.25	4.80	4.47	4.40	5.00	4.17
My child is getting a good education at this school	4.17	4.75	4.40	4.53	4.32	4.00	4.17
My child is treated fairly at school	4.17	3.75	4.40	4.00	4.32	3.00	4.00
My child likes his/her teachers	4.33	4.00	5.00	4.47	4.52	5.00	4.67
At this school, there are good supports for all children, including children with learning disabilities	4.17	4.00	4.60	4.59	4.29	3.00	3.83
This school is a supportive and inviting place for parents/guardians	4.00	4.00	4.60	4.47	4.40	3.00	4.17
Adults at this school respect cultural diversity	4.00	4.25	4.40	4.47	4.40	3.00	4.20
Adults at this school have high expectations of my child	4.17	4.25	4.40	4.41	4.16	4.00	4.17
Teachers at my child's school are interested in what I have to say	4.00	4.25	4.60	4.29	4.36	3.00	4.17
I feel like I am actively involved in my child's education	4.00	4.00	4.80	4.41	4.36	4.00	4.17
The district's school calendar meets the needs of my child and our family	4.17	4.00	4.20	4.18	4.12	4.00	3.83
Overall Elementary Schools							
My child's school is a supportive and inviting place	4.47	4.36	4.51	4.44	4.47	4.26	4.46
My child is safe at school	4.42	4.40	4.42	4.36	4.38	4.23	4.35
I feel welcome at this school	4.37	4.38	4.47	4.48	4.44	4.27	4.49
I am satisfied with communication with my child's teacher(s)	4.40	4.30	4.45	4.36	4.35	4.19	4.35
My child is getting a good education at this school	4.40	4.28	4.44	4.40	4.33	4.04	4.38
My child is treated fairly at school	4.34	4.15	4.37	4.32	4.38	4.14	4.33
My child likes his/her teachers	4.52	4.41	4.47	4.53	4.57	4.49	4.55
At this school, there are good supports for all children, including children with learning disabilities	4.32	4.06	4.31	4.31	4.22	4.05	4.31
This school is a supportive and inviting place for parents/guardians	4.31	4.22	4.42	4.38	4.36	4.11	4.44
Adults at this school respect cultural diversity	4.28	4.25	4.38	4.27	4.43	4.19	4.39
Adults at this school have high expectations of my child	4.30	4.26	4.36	4.27	4.31	3.95	4.28
Teachers at my child's school are interested in what I have to say	4.35	4.25	4.39	4.24	4.33	4.16	4.31
I feel like I am actively involved in my child's education	4.38	4.48	4.40	4.31	4.45	4.20	4.40
The district's school calendar meets the needs of my child and our family	4.22	4.25	4.20	4.19	4.10	3.62	4.08
District							
My child's school is a supportive and inviting place	4.37	4.20	4.41	4.37	4.37	4.20	4.37
My child is safe at school	4.31	4.18	4.29	4.31	4.29	4.11	4.30
I feel welcome at this school	4.31	4.18	4.38	4.36	4.36	4.23	4.40
I am satisfied with communication with my child's teacher(s)	4.21	3.99	4.32	4.23	4.16	4.03	4.20
My child is getting a good education at this school	4.28	4.09	4.33	4.31	4.23	4.03	4.26
My child is treated fairly at school	4.21	3.94	4.30	4.24	4.29	4.08	4.24
My child likes his/her teachers	4.33	4.06	4.31	4.35	4.33	4.20	4.34
At this school, there are good supports for all children, including children with learning disabilities	4.19	3.90	4.24	4.23	4.11	3.97	4.18
This school is a supportive and inviting place for parents/guardians	4.21	4.05	4.31	4.29	4.26	4.05	4.31
Adults at this school respect cultural diversity	4.20	4.02	4.29	4.22	4.34	4.17	4.31
Adults at this school have high expectations of my child	4.24	4.05	4.26	4.21	4.21	3.94	4.20
Teachers at my child's school are interested in what I have to say	4.22	4.04	4.28	4.17	4.20	4.05	4.19
I feel like I am actively involved in my child's education	4.29	4.36	4.37	4.24	4.33	4.20	4.30
The district's school calendar meets the needs of my child and our family	4.19	4.18	4.21	4.16	4.06	3.66	4.02

Range is from a low of 1 to a high of 5