

Turnagain Elementary School Overview

Statement of Program

Turnagain Elementary School provides educational opportunities for K-6 students. The Turnagain educational community believes that all children can learn and be successful in a safe, nurturing environment where a respectful relationship exists between staff, students, and parents. We are dedicated to improving student achievement and to providing opportunities for students to acquire strategies and coping skills that foster good citizenship and life-long learning.

Students experience a wide variety of stimulating and challenging educational experiences with emphasis placed on the acquisition of skills through a variety of teaching styles. In addition to the neighborhood school program, a Russian immersion program is available through an application and lottery process. Students in the immersion program come from throughout the Anchorage area.

Our goal is that all students will become literate, independent, positive and respectful citizens who take pride in themselves and their community.

From the School Report Card

School Goals

Goal	Level of Achievement
The number of students in grades 3-6 rated proficient on the state language arts assessment will increase by 2.5 percent.	Partially Attained
The number of students in grades 3-6 rated proficient on the state math assessment will increase by 2.5 percent.	Partially Attained

From the School Report Card

Budget*

2006-07 Actual Expenditures	\$1,918,758
2007-08 Revised Budgeted Amount	\$2,430,632
2008-09 Proposed Budget	\$2,686,288

*Dollars budgeted or expended are general fund only
From IFAS

Turnagain Elementary School Characteristics			
	School	District	Source of Information
Membership	402	48,858	Fall OASIS
Capacity	86.10%	N/A	2008-18 ASD Capital Improvement Plan
Attendance Rate	93.77%	92.83%	NCLB Summer Data Collection
Retention Rate K-8	0.78%	0.60%	SMS and NCLB Summer Data Collection
Transiency Rate	28.63%	26.07%	NCLB Summer Data Collection
Economically Disadvantaged	166	17,717	Fall OASIS
Average Weekly Volunteer Hours	100	4,660	Department of Education Report Card Report
Students Taking the Alternate Assessment	0	228	SMS
Change in Enrollment	3.88%	-0.76%	Fall Oasis

Teacher Qualification				
Number of Teachers	Percent Fully Licensed	Percent With Advanced Degrees	Number Nationally Board Certified	Percent of Classes Taught by "Highly Qualified Teachers"
38	100.00%	36.84%	0	100.00%

Turnagain Elementary School Business Partnerships
FedEx Kinko's; Turnagain Methodist Church; Northern Forum

From the School Report Card

Ethnicity Report							
African-American/Black	Alaska Native/American Indian	Asian	Native Hawaiian/Other Pacific Islander	White	Hispanic	Multi-Ethnic	Total
13	38	13	18	209	36	75	402

From Fall Oasis

Full Academic Year		
Students Enrolled	Students Enrolled for FAY	Percent FAY
423	366	86.52%

From participation file (Grades 3-10)

Turnagain Elementary School
2007-08 Adequate Yearly Progress
Status Report

Does Not Meet AYP
Level 1

AMO For Language Arts: 77.18%
AMO For Mathematics: 66.09%

Group	Participation Rate				"FAY" (D) Tested & Enrolled "FAY"	Language Arts Performance				Mathematics Performance			
	(A) Number Enrolled	(B) Number Tested	Participation Rate (%)	(C) Participation Rate Met		(E) Proficient on LA	(F) Percent Proficient on LA	(G) LA Target	(H) Met AMO for LA	(I) Proficient on Mathematics	(J) Percent Proficient in Mathematics	(K) Mathematics Target	(L) Met AMO for Mathematics
All Students	175	175	100%	Yes	151	109	72.2%	69.2%	Yes	108	71.5%	57.1%	Yes
AF AM	6	6	N/A	N/A	N/A	N/A	N/A	N/A	N/A	N/A	N/A	N/A	N/A
AKNA/AI	21	21	100%	Yes	N/A	N/A	N/A	N/A	N/A	N/A	N/A	N/A	N/A
Asian/NH/OPI	18	18	N/A	N/A	N/A	N/A	N/A	N/A	N/A	N/A	N/A	N/A	N/A
White	76	76	100%	Yes	70	59	84.3%	65.5%	Yes	59	84.3%	52.9%	Yes
Hispanic	23	23	100%	Yes	N/A	N/A	N/A	N/A	N/A	N/A	N/A	N/A	N/A
ME	31	31	100%	Yes	27	20	74.1%	58.4%	Yes	19	70.4%	44.9%	Yes
EDS	82	82	100%	Yes	68	36	52.9%	65.3%	No	37	54.4%	52.7%	Yes
SWD	33	33	100%	Yes	32	10	31.2%	59.9%	Yes-SH	12	37.5%	46.6%	Yes-SH
LEP	44	44	100%	Yes	34	22	64.7%	60.4%	Yes	21	61.8%	47.2%	Yes

Attendance Rate: Met

93.8% (Threshold is 85%)

N/A is used to indicate:

- (1) Subgroups with 20 or fewer students enrolled on the first day of testing shall not be included in participation rate calculation.
- (2) Subgroups with 25 or fewer students enrolled for the "full academic year" shall not have the performance score computed.

* For the groups where the number enrolled is less than or equal to 40, participation is met when no more than two miss the test. Groups can also meet this target using the average of the past two or three years.

** When a group achieves a "Yes" without meeting the listed target, it has done so using either the 99% confidence interval or Safe Harbor.

*** The results cannot be published without releasing personally identifiable information based upon the EED reporting protocol.

This document was prepared by the ASD Assessment and Evaluation Department.

7/10/2008

Turnagain Elementary School
2007-08 Adequate Yearly Progress
Growth Report

The AYP growth reports are generated by the Alaska State Department of Education and Early Development. The reports can be found online at: http://www.asdk12.org/depts/assess_eval/AYP/State_AS_D_AYG_0708.pdf

SBA Proficiency Comparison by Grade for Turnagain Elementary School																
	Reading Percent Proficient				Writing Percent Proficient				Mathematics Percent Proficient				Science* Percent Proficient			
	04-05	05-06	06-07	07-08	04-05	05-06	06-07	07-08	04-05	05-06	06-07	07-08	04-05	05-06	06-07	07-08
All Students	80.95%	77.78%	73.91%	73.53%	85.63%	71.90%	72.67%	72.51%	69.82%	66.23%	70.81%	70.69%	N/A	N/A	N/A	44.68%
Grade 3	78.38%	62.50%	76.09%	77.78%	81.08%	55.00%	69.57%	85.19%	70.27%	57.89%	67.39%	83.93%	N/A	N/A	N/A	N/A
Grade 4	82.00%	80.00%	64.10%	73.33%	89.80%	73.33%	74.36%	67.39%	64.71%	66.67%	53.85%	63.04%	N/A	N/A	N/A	44.68%
Grade 5	90.32%	82.98%	68.75%	68.42%	90% or more	80.85%	62.50%	63.16%	77.42%	70.21%	78.13%	57.89%	N/A	N/A	N/A	N/A
Grade 6	76.00%	86.11%	84.09%	72.73%	80.00%	77.78%	81.82%	69.70%	70.00%	69.44%	84.09%	73.53%	N/A	N/A	N/A	N/A

* 2007-08 was the first year Science was administered for grades 4, 8 and 10 on the SBA.

SBA Proficient & Not Proficient by NCLB Groups for Turnagain Elementary School								
	Reading		Writing		Mathematics		Science**	
	Percent Proficient	Percent Not Proficient	Percent Proficient	Percent Not Proficient	Percent Proficient	Percent Not Proficient	Percent Proficient	Percent Not Proficient
All Students	73.68%	26.32%	72.67%	27.33%	70.86%	29.14%	44.68%	55.32%
AF AM	40% or fewer	60% or more	40% or fewer	60% or more	40% or fewer	60% or more	*	*
AKNA/AI	60.00%	40.00%	71.43%	28.57%	61.90%	38.10%	60% or fewer	40% or more
Asian	60% or more	40% or fewer	60% or more	40% or fewer	60% or more	40% or fewer	*	*
NH/OPI	50.00%	50.00%	41.67%	58.33%	66.67%	33.33%	*	*
White	84.21%	15.79%	84.21%	15.79%	84.21%	15.79%	63.64%	36.36%
Hispanic	50.00%	50.00%	60.00%	40.00%	47.83%	52.17%	60% or fewer	40% or more
ME	83.87%	16.13%	67.74%	32.26%	67.74%	32.26%	75% or fewer	25% or more
EDS	60.26%	39.74%	59.49%	40.51%	57.32%	42.68%	80% or fewer	20% or more
Non-EDS	84.95%	15.05%	83.87%	16.13%	82.80%	17.20%	61.29%	38.71%
SWD	21.43%	78.57%	39.29%	60.71%	37.93%	62.07%	60% or fewer	40% or more
Non-SWD	83.92%	16.08%	79.17%	20.83%	77.40%	22.60%	51.22%	48.78%
LEP	40.00%	60.00%	30.00%	70.00%	30.43%	69.57%	60% or fewer	40% or more
Not LEP	78.15%	21.85%	78.29%	21.71%	76.97%	23.03%	48.78%	51.22%
Migrant	70.00%	30.00%	60.00%	40.00%	70.00%	30.00%	*	*
Not Migrant	73.91%	26.09%	73.46%	26.54%	70.91%	29.09%	45.65%	54.35%
Female	87.67%	12.33%	85.14%	14.86%	76.00%	24.00%	60.00%	40.00%
Male	63.27%	36.73%	63.27%	36.73%	67.00%	33.00%	33.33%	66.67%

* Results cannot be published without releasing personally identifiable information based upon the EED reporting protocol

** 2007-08 was the first year Science was administered for grades 4, 8 and 10 on the SBA.

SBA Mean Scale Score Comparison by NCLB Groups for Turnagain Elementary School								
	Reading		Writing		Mathematics		Science***	
	06-07	07-08	06-07	07-08	06-07	07-08	06-07	07-08
All Students	362.04	361.14	356.45	357.07	341.18	347.27	N/A	298.68
AF AM	305.08	286.00	293.67	256.83	280.50	259.67	N/A	*
AKNA/AI	362.48	336.30	367.52	344.29	343.85	326.10	N/A	260.57
Asian**	368.88*	392.67	356.31*	422.00	358.13*	380.67	N/A	*
NH/OPI**	N/A	301.67	N/A	300.00	N/A	312.50	N/A	*
White	388.18	385.64	385.18	384.54	365.63	377.28	N/A	330.41
Hispanic	306.38	326.85	293.38	320.95	287.54	306.83	N/A	298.60
ME	330.90	370.68	315.40	350.61	306.05	342.03	N/A	279.75
EDS	335.56	322.53	321.90	321.23	313.73	311.32	N/A	218.13
Non-EDS	387.55	393.53	389.73	387.52	367.62	378.98	N/A	340.26
SWD	274.83	274.68	264.04	280.25	261.21	276.21	N/A	226.33
Non-SWD	377.31	378.07	372.64	372.01	355.19	361.39	N/A	309.27
LEP	343.23	300.95	331.77	297.30	329.45	284.78	N/A	254.50
Not LEP	369.79	369.11	366.62	364.93	346.02	356.73	N/A	305.15
Migrant	328.63	347.80	316.00	327.40	325.13	329.60	N/A	*
Not Migrant	363.78	361.97	358.56	358.90	342.02	348.35	N/A	301.09
Female	377.96	384.37	374.88	386.07	349.52	362.60	N/A	322.75
Male	348.15	343.84	340.37	335.17	333.91	335.78	N/A	280.85

* Results cannot be published without releasing personally identifiable information based upon the EED reporting protocol

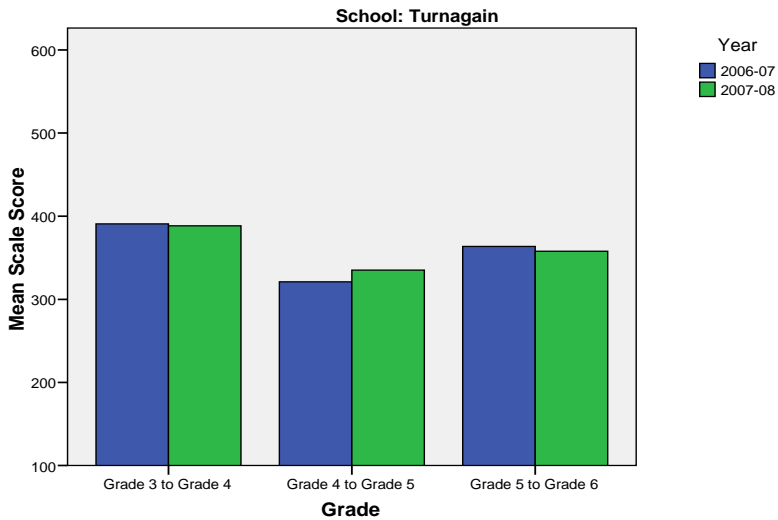
** Prior to 2007-08 the Asian category includes Native Hawaiian/Other Pacific Islander. In 2007-08 Native Hawaiian/Other Pacific Islander is a separate ethnic category.

*** 2007-08 was the first year Science was administered for grades 4, 8 and 10 on the SBA.

Turnagain Elementary School SBA Change Average Scale Score by NCLB Groups: Reading									
	Average Scale Score of Students Tested in District Both Years			Average Scale Score of Students Tested in District Both Years			Average Scale Score of Students Tested in District Both Years		
	Grade 3 in 06-07	Grade 4 in 07-08	Difference	Grade 4-in 06-07	Grade 5 in 07-08	Difference	Grade 5-in 06-07	Grade 6 in 07-08	Difference
All Students	390.72	388.35	-2.37	321.09	335.15	14.06	363.68	357.79	-5.89
AF AM	*	*	*	*	*	*	*	*	*
AKNA/AI	*	*	*	316.57	328.71	12.14	*	*	*
Asian	*	*	*	*	*	*	*	*	*
NH/OPI	*	*	*	*	*	*	*	*	*
White	408.67	411.29	2.62	342.36	352.45	10.09	396.10	401.40	5.30
Hispanic	383.40	396.80	13.40	258.80	289.80	31.00	*	*	*
ME	375.13	364.25	-10.88	348.43	366.00	17.57	398.80	396.60	-2.20
EDS	328.67	290.07	-38.60	315.86	326.00	10.14	332.31	328.38	-3.92
Non-EDS	423.96	441.00	17.04	329.54	349.92	20.38	390.87	383.27	-7.60
SWD	304.67	296.83	-7.83	256.11	288.11	32.00	295.60	267.80	-27.80
Non-SWD	404.68	403.19	-1.49	344.48	352.08	7.60	378.48	377.35	-1.13
LEP	337.33	317.00	-20.33	253.20	287.80	34.60	*	*	*
Not LEP	399.38	399.92	0.54	332.79	343.31	10.52	375.04	368.20	-6.84
Migrant	*	*	*	*	*	*	*	*	*
Not Migrant	393.00	390.79	-2.21	318.87	333.00	14.13	365.67	359.63	-6.04
Female	416.56	426.72	10.17	348.29	354.93	6.64	397.22	373.67	-23.56
Male	372.12	360.72	-11.40	302.05	321.30	19.25	347.79	350.26	2.47

* Results cannot be published without releasing personally identifiable information based upon the EED reporting protocol

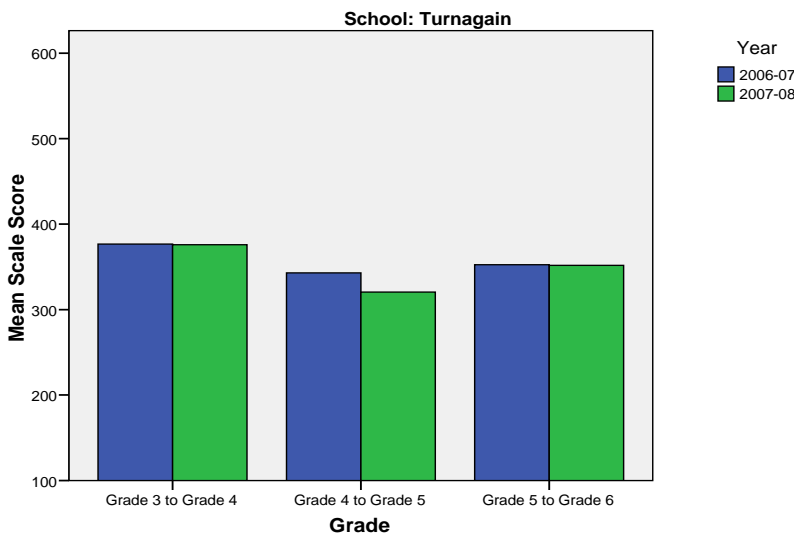
Change in Mean Scale Score in SBA Reading by Grade Between 2006-07 and 2007-08



Turnagain Elementary School SBA Change Average Scale Score by NCLB Groups: Writing									
	Average Scale Score of Students Tested in District Both Years			Average Scale Score of Students Tested in District Both Years			Average Scale Score of Students Tested in District Both Years		
	Grade 3 in 06-07	Grade 4 in 07-08	Difference	Grade 4- in 06-07	Grade 5 in 07-08	Difference	Grade 5- in 06-07	Grade 6 in 07-08	Difference
All Students	376.73	375.84	-0.89	342.88	320.47	-22.41	352.43	351.64	-0.79
AF AM	*	*	*	*	*	*	*	*	*
AKNA/AI	365.80	421.80	56.00	339.57	320.57	-19.00	*	*	*
Asian	*	*	*	*	*	*	*	*	*
NH/OPI	*	*	*	*	*	*	*	*	*
White	405.76	405.95	0.19	358.18	342.64	-15.55	378.00	377.40	-0.60
Hispanic	361.80	359.00	-2.80	311.20	271.80	-39.40	*	*	*
ME	356.38	299.88	-56.50	376.71	342.86	-33.86	410.20	398.00	-12.20
EDS	296.13	288.69	-7.44	341.05	314.57	-26.48	319.38	321.23	1.85
Non-EDS	422.79	425.64	2.86	345.85	330.00	-15.85	381.07	378.00	-3.07
SWD	261.50	282.17	20.67	294.67	271.56	-23.11	276.80	258.80	-18.00
Non-SWD	394.92	390.63	-4.29	360.24	338.08	-22.16	368.87	371.83	2.96
LEP	295.33	329.00	33.67	283.60	282.20	-1.40	*	*	*
Not LEP	389.58	383.24	-6.34	353.10	327.07	-26.03	365.56	363.92	-1.64
Migrant	*	*	*	*	*	*	*	*	*
Not Migrant	379.47	377.98	-1.49	343.63	321.30	-22.33	353.30	353.81	0.52
Female	404.79	420.42	15.63	373.00	334.14	-38.86	400.89	391.78	-9.11
Male	355.40	341.96	-13.44	321.80	310.90	-10.90	329.47	332.63	3.16

* Results cannot be published without releasing personally identifiable information based upon the EED reporting protocol

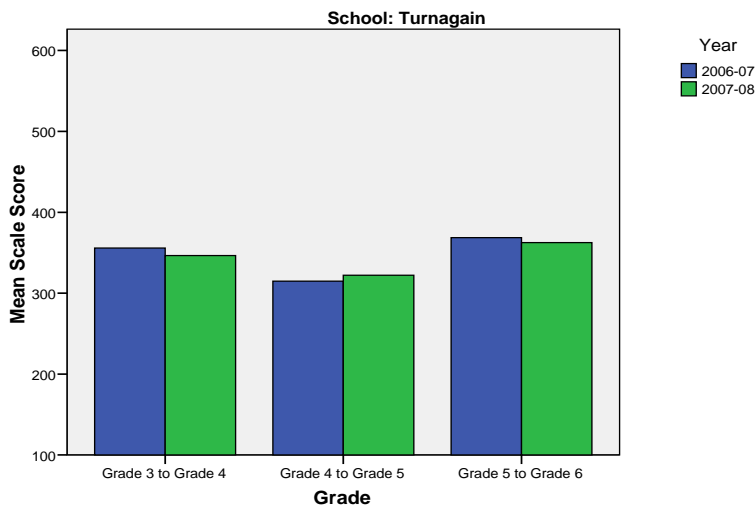
Change in Mean Scale Score in SBA Writing by Grade between 2006-07 and 2007-08



Turnagain Elementary School SBA Change Average Scale Score by NCLB Groups: Mathematics									
	Average Scale Score of Students Tested in District Both Years			Average Scale Score of Students Tested in District Both Years			Average Scale Score of Students Tested in District Both Years		
	Grade 3 in 06-07	Grade 4 in 07-08	Difference	Grade 4- in 06-07	Grade 5 in 07-08	Difference	Grade 5- in 06-07	Grade 6 in 07-08	Difference
All Students	355.75	346.61	-9.14	314.79	322.21	7.41	368.71	362.54	-6.18
AF AM	*	*	*	*	*	*	*	*	*
AKNA/AI	333.00	346.20	13.20	306.14	310.57	4.43	*	*	*
Asian	*	*	*	*	*	*	*	*	*
NH/OPI	*	*	*	*	*	*	*	*	*
White	379.38	380.19	0.81	361.64	360.64	-1.00	385.60	400.20	14.60
Hispanic	350.00	359.60	9.60	259.80	265.80	6.00	*	*	*
ME	344.25	283.00	-61.25	312.14	338.86	26.71	436.60	394.80	-41.80
EDS	283.88	261.50	-22.38	304.48	310.10	5.62	348.92	346.38	-2.54
Non-EDS	396.82	395.25	-1.57	331.46	341.77	10.31	385.87	376.53	-9.33
SWD	256.67	234.33	-22.33	273.67	288.78	15.11	296.60	284.80	-11.80
Non-SWD	371.39	364.34	-7.05	329.60	334.24	4.64	384.39	379.43	-4.96
LEP	282.17	285.50	3.33	279.40	280.40	1.00	*	*	*
Not LEP	367.37	356.26	-11.11	320.90	329.41	8.52	376.72	369.64	-7.08
Migrant	*	*	*	*	*	*	*	*	*
Not Migrant	358.51	349.79	-8.72	311.17	318.97	7.80	369.56	363.96	-5.59
Female	365.32	371.89	6.58	336.29	337.50	1.21	375.89	375.00	-0.89
Male	348.48	327.40	-21.08	299.75	311.50	11.75	365.32	356.63	-8.68

* Results cannot be published without releasing personally identifiable information based upon the EED reporting protocol

Change in Mean Scale Score in SBA Mathematics by Grade between 2006-07 and 2007-08



Reading: SBA Results Compared for Turnagain Elementary School, District and State Grades 3 Through 6															
	% Advanced Proficient			% Proficient			% Below Proficient			% Far Below Proficient			% Tested		
	School	District	State	School	District	State	School	District	State	School	District	State	School	District	State
All Students	32.75%	39.70%	35.67%	40.94%	43.89%	45.50%	18.13%	11.60%	13.02%	8.19%	4.80%	5.80%	97.71%	98.15%	97.98%
AF AM	*	20.73%	22.99%	*	54.18%	53.49%	50.00%	17.79%	16.46%	*	7.30%	7.06%	100.00%	98.04%	97.49%
AKNA/AI	20.00%	20.23%	14.62%	40.00%	51.11%	48.17%	25.00%	18.54%	24.83%	15.00%	10.11%	12.37%	95.24%	96.88%	97.59%
Asian	*	30.22%	28.26%	83.33%	48.71%	51.04%	*	15.32%	15.32%	*	5.75%	5.38%	100.00%	97.64%	97.67%
NH/OPI	*	14.67%	N/A	*	51.03%	N/A	25.00%	24.59%	N/A	25.00%	9.71%	N/A	100.00%	98.98%	N/A
White	50.00%	52.75%	47.28%	34.21%	38.06%	42.41%	10.53%	6.69%	7.27%	5.26%	2.50%	3.03%	100.00%	98.68%	98.28%
Hispanic	15.00%	32.35%	31.74%	35.00%	46.43%	48.60%	*	14.67%	13.66%	*	6.55%	6.00%	86.96%	97.14%	97.32%
ME	32.26%	33.26%	34.76%	51.61%	48.25%	47.75%	*	13.47%	12.80%	*	5.01%	4.70%	100.00%	98.15%	98.03%
EDS	10.26%	22.85%	21.47%	50.00%	49.71%	48.65%	25.64%	19.04%	20.31%	14.10%	8.40%	9.57%	95.12%	97.50%	96.44%
Not EDS	51.61%	51.44%	46.31%	33.33%	39.84%	43.15%	11.83%	6.42%	7.56%	3.23%	2.30%	2.98%	100.00%	98.61%	99.16%
SWD	*	10.08%	9.29%	*	37.10%	37.96%	42.86%	32.15%	31.20%	35.71%	20.67%	21.55%	96.55%	94.28%	93.60%
Non-SWD	39.16%	45.02%	40.09%	44.76%	45.12%	46.77%	13.29%	7.91%	9.98%	2.80%	1.95%	3.17%	97.95%	98.88%	98.75%
LEP	*	4.97%	3.12%	*	39.93%	38.06%	30.00%	37.14%	38.40%	30.00%	17.96%	20.42%	86.96%	94.25%	96.11%
Not LEP	36.42%	42.78%	39.95%	41.72%	44.25%	46.48%	16.56%	9.33%	9.68%	5.30%	3.64%	3.88%	99.34%	98.51%	98.23%
Migrant	*	27.01%	17.29%	60.00%	50.34%	48.58%	30.00%	16.44%	23.78%	*	6.21%	10.35%	100.00%	98.35%	98.50%
Not Migrant	34.16%	40.26%	36.97%	39.75%	43.61%	45.29%	17.39%	11.38%	12.26%	8.70%	4.74%	5.48%	97.58%	98.14%	97.94%
Female	41.10%	44.40%	39.45%	46.58%	43.41%	45.33%	*	8.75%	10.85%	*	3.44%	4.37%	97.33%	98.39%	98.31%
Male	26.53%	35.15%	32.09%	36.73%	44.37%	45.67%	23.47%	14.36%	15.08%	13.27%	6.13%	7.16%	98.00%	97.92%	97.66%

* Results cannot be published without releasing personally identifiable information based upon the EED reporting protocol

Writing: SBA Results Compared for Turnagain Elementary School, District and State Grades 3 Through 6															
	% Advanced Proficient			% Proficient			% Below Proficient			% Far Below Proficient			% Tested		
	School	District	State	School	District	State	School	District	State	School	District	State	School	District	State
All Students	25.58%	34.87%	30.49%	47.09%	44.25%	44.50%	*	18.78%	22.32%	*	2.10%	2.69%	98.29%	98.11%	97.96%
AF AM	*	20.71%	20.51%	*	46.71%	48.68%	50.00%	28.71%	27.18%	*	3.88%	3.63%	100.00%	98.15%	97.71%
AKNA/AI	19.05%	17.15%	12.11%	52.38%	45.31%	41.05%	*	33.38%	40.69%	*	4.15%	6.15%	100.00%	96.51%	97.64%
Asian	*	30.17%	28.49%	66.67%	45.92%	45.93%	*	21.33%	23.31%	*	2.58%	2.27%	100.00%	97.56%	97.67%
NH/OPI	*	14.02%	N/A	33.33%	42.89%	N/A	58.33%	39.38%	N/A	*	3.71%	N/A	100.00%	99.18%	N/A
White	35.53%	45.85%	40.04%	48.68%	41.91%	44.71%	*	11.26%	13.97%	*	0.99%	1.28%	100.00%	98.66%	98.22%
Hispanic	*	27.33%	27.00%	55.00%	47.25%	48.36%	35.00%	22.54%	22.23%	*	2.88%	2.41%	86.96%	97.07%	97.36%
ME	29.03%	28.51%	29.14%	38.71%	47.68%	47.29%	*	21.31%	21.37%	*	2.51%	2.20%	100.00%	98.15%	97.96%
EDS	7.59%	18.92%	17.53%	51.90%	47.34%	45.15%	*	29.95%	32.95%	*	3.79%	4.37%	96.34%	97.50%	96.53%
Not EDS	40.86%	45.99%	40.21%	43.01%	42.10%	44.01%	*	10.99%	14.35%	*	0.92%	1.44%	100.00%	98.54%	99.06%
SWD	*	7.09%	6.94%	39.29%	38.82%	37.02%	53.57%	45.96%	47.34%	*	8.12%	8.69%	96.55%	94.28%	93.97%
Non-SWD	30.56%	39.86%	34.45%	48.61%	45.23%	45.76%	*	13.89%	18.11%	*	1.02%	1.69%	98.63%	98.83%	98.66%
LEP	*	4.71%	3.14%	25.00%	37.05%	30.66%	70.00%	50.57%	56.76%	*	7.67%	9.44%	86.96%	94.25%	96.18%
Not LEP	28.29%	37.55%	34.08%	50.00%	44.89%	46.32%	*	15.96%	17.79%	*	1.60%	1.81%	100.00%	98.47%	98.20%
Migrant	*	21.44%	14.20%	50.00%	48.58%	42.55%	30.00%	26.63%	38.57%	*	3.35%	4.68%	100.00%	98.51%	98.58%
Not Migrant	26.54%	35.46%	31.63%	46.91%	44.06%	44.64%	*	18.43%	21.18%	*	2.04%	2.55%	98.18%	98.09%	97.92%
Female	36.49%	42.63%	37.48%	48.65%	42.50%	43.42%	*	13.62%	17.40%	*	1.26%	1.70%	98.67%	98.32%	98.22%
Male	17.35%	27.36%	23.87%	45.92%	45.96%	45.52%	*	23.78%	26.98%	*	2.91%	3.63%	98.00%	97.90%	97.72%

* Results cannot be published without releasing personally identifiable information based upon the EED reporting protocol

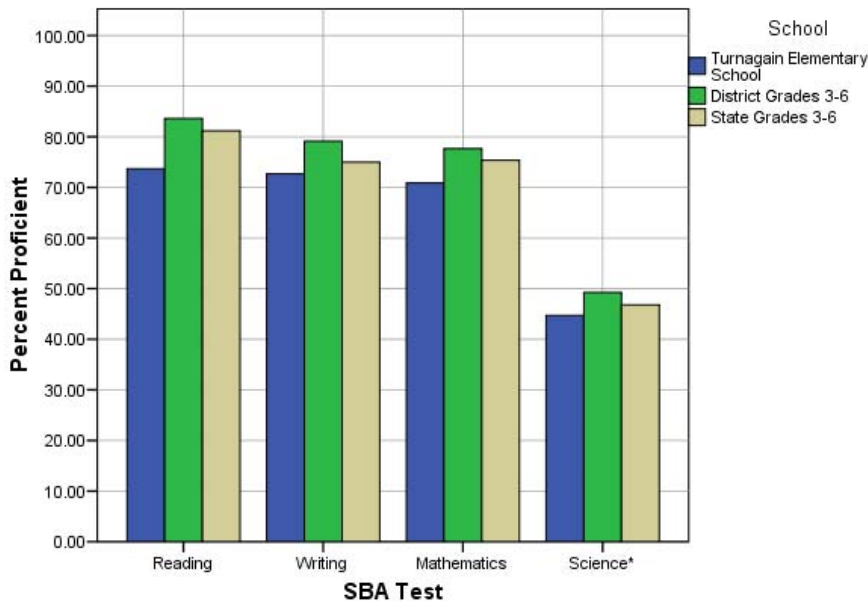
Mathematics: SBA Results Compared for Turnagain Elementary School, District and State Grades 3 Through 6															
	% Advanced Proficient			% Proficient			% Below Proficient			% Far Below Proficient			% Tested		
	School	District	State	School	District	State	School	District	State	School	District	State	School	District	State
All Students	33.71%	39.81%	36.08%	37.14%	37.84%	39.26%	14.86%	12.46%	13.78%	14.29%	9.88%	10.88%	100.00%	98.52%	98.12%
AF AM	*	19.48%	22.09%	*	40.14%	41.60%	*	20.19%	18.61%	50.00%	20.19%	17.70%	100.00%	98.38%	97.78%
AKNA/AI	19.05%	23.20%	18.26%	42.86%	39.51%	39.14%	23.81%	19.22%	21.79%	14.29%	18.07%	20.81%	100.00%	96.96%	97.72%
Asian	66.67%	37.02%	34.29%	*	41.20%	41.23%	*	13.76%	14.10%	*	8.03%	10.38%	100.00%	99.27%	98.99%
NH/OPI	*	18.52%	N/A	66.67%	38.07%	N/A	*	20.16%	N/A	*	23.25%	N/A	100.00%	99.39%	N/A
White	50.00%	51.12%	45.75%	34.21%	35.15%	38.35%	10.53%	8.41%	9.81%	5.26%	5.32%	6.09%	100.00%	98.69%	98.17%
Hispanic	13.04%	31.85%	31.11%	34.78%	40.04%	42.19%	21.74%	15.02%	15.10%	30.43%	13.09%	11.60%	100.00%	98.66%	98.47%
ME	32.26%	33.75%	35.45%	35.48%	41.21%	40.61%	12.90%	13.93%	13.30%	19.35%	11.11%	10.64%	100.00%	98.26%	98.00%
EDS	13.41%	24.26%	23.31%	43.90%	41.50%	40.98%	20.73%	17.54%	18.60%	21.95%	16.70%	17.11%	100.00%	98.14%	96.77%
Not EDS	51.61%	50.70%	45.67%	31.18%	35.28%	37.96%	9.68%	8.91%	10.16%	7.53%	5.12%	6.21%	100.00%	98.79%	99.16%
SWD	*	12.52%	12.06%	*	31.53%	32.14%	24.14%	23.68%	23.60%	37.93%	32.27%	32.20%	100.00%	94.19%	93.99%
Non-SWD	39.73%	44.69%	40.12%	37.67%	38.97%	40.45%	13.01%	10.46%	12.13%	9.59%	5.88%	7.30%	100.00%	99.34%	98.85%
LEP	*	8.22%	6.05%	*	36.74%	34.10%	30.43%	24.50%	27.43%	39.13%	30.54%	32.42%	100.00%	97.95%	97.56%
Not LEP	37.50%	42.73%	40.09%	39.47%	37.94%	39.95%	12.50%	11.35%	11.96%	10.53%	7.98%	8.01%	100.00%	98.57%	98.19%
Migrant	40.00%	30.94%	22.37%	30.00%	43.65%	40.27%	*	14.21%	20.36%	*	11.20%	17.00%	100.00%	98.68%	98.54%
Not Migrant	33.33%	40.21%	37.05%	37.58%	37.58%	39.19%	15.76%	12.38%	13.31%	13.33%	9.83%	10.45%	100.00%	98.51%	98.09%
Female	38.67%	41.01%	36.83%	37.33%	38.32%	39.88%	14.67%	11.59%	13.34%	9.33%	9.09%	9.96%	100.00%	98.71%	98.31%
Male	30.00%	38.66%	35.38%	37.00%	37.38%	38.67%	15.00%	13.30%	14.20%	18.00%	10.66%	11.75%	100.00%	98.34%	97.94%

* Results cannot be published without releasing personally identifiable information based upon the EED reporting protocol

Science: SBA Results Compared for Turnagain Elementary School, District and State Grade 4															
	% Advanced Proficient			% Proficient			% Below Proficient			% Far Below Proficient			% Tested		
	School	District	State	School	District	State	School	District	State	School	District	State	School	District	State
All Students	27.66%	23.68%	22.1%	17.02%	25.57%	24.7%	23.40%	31.70%	31.3%	31.91%	19.06%	21.9%	100.00%	97.81%	95.35%
AF AM	*	9.18%	8.9%	*	18.84%	23.3%	*	39.13%	38.0%	*	32.85%	29.8%	100.00%	98.57%	94.49%
AKNA/AI	*	6.54%	6.8%	*	21.50%	14.2%	42.86%	42.99%	35.2%	*	28.97%	43.8%	100.00%	96.40%	94.98%
Asian	*	10.18%	13.4%	*	21.40%	19.4%	*	39.30%	37.5%	*	29.12%	29.7%	100.00%	98.28%	97.39%
NH/OPI	*	6.57%	N/A	*	8.03%	N/A	*	34.31%	N/A	*	51.09%	N/A	100.00%	98.56%	N/A
White	36.36%	36.40%	32.3%	27.27%	29.08%	29.9%	18.18%	25.33%	27.3%	18.18%	9.19%	10.5%	100.00%	97.87%	94.97%
Hispanic	*	16.17%	18.2%	*	26.15%	26.0%	*	32.08%	33.9%	*	25.61%	21.9%	100.00%	97.12%	96.39%
ME	*	16.06%	18.5%	*	26.12%	26.8%	*	37.47%	35.9%	50.00%	20.34%	18.7%	100.00%	98.32%	96.90%
EDS	*	8.34%	11.0%	*	22.44%	20.1%	*	38.10%	34.7%	75.00%	31.12%	34.2%	100.00%	97.73%	94.99%
Not EDS	41.94%	35.00%	31.2%	19.35%	27.88%	28.5%	29.03%	26.97%	28.5%	9.68%	10.15%	11.9%	100.00%	97.87%	95.64%
SWD	*	8.38%	7.7%	*	16.38%	15.2%	50.00%	36.57%	36.6%	50.00%	38.67%	40.5%	100.00%	93.25%	91.70%
Non-SWD	31.71%	26.43%	24.7%	19.51%	27.22%	26.4%	19.51%	30.82%	30.4%	29.27%	15.53%	18.5%	100.00%	98.68%	96.04%
LEP	*	2.00%	1.5%	*	5.14%	3.8%	*	34.00%	28.3%	50.00%	58.86%	66.5%	100.00%	96.15%	95.67%
Not LEP	31.71%	26.13%	25.2%	17.07%	27.88%	27.9%	21.95%	31.44%	31.8%	29.27%	14.55%	15.1%	100.00%	98.00%	95.30%
Migrant	*	9.70%	9.0%	*	26.87%	15.3%	*	39.55%	34.3%	*	23.88%	41.4%	100.00%	97.10%	97.32%
Not Migrant	28.26%	24.24%	23.0%	17.39%	25.51%	25.3%	23.91%	31.38%	31.1%	30.43%	18.86%	20.5%	100.00%	97.84%	95.21%
Female	40.00%	22.73%	20.8%	20.00%	25.78%	25.2%	20.00%	33.63%	32.6%	20.00%	17.87%	21.4%	100.00%	98.05%	95.43%
Male	18.52%	24.61%	23.4%	14.81%	25.36%	24.2%	25.93%	29.80%	30.1%	40.74%	20.23%	22.3%	100.00%	97.58%	95.27%

* Results cannot be published without releasing personally identifiable information based upon the EED reporting protocol

2007-08 SBA Results Compared for Turnagain Elementary School, District and State

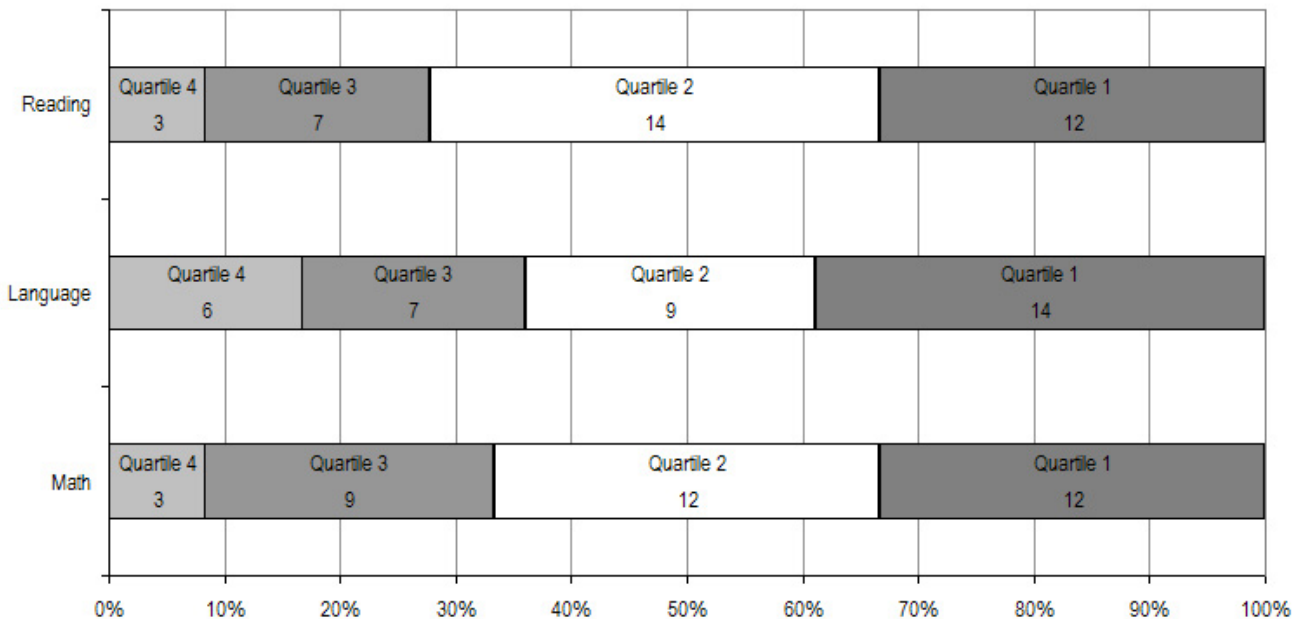


* 2007-08 was the first year Science was administered for grades 4, 8 and 10 on the SBA.

Turnagain Elementary School TerraNova Grade 5 Percent in Each Quartile								
Reading	Above Average		Average				Below Average	
	4th Quartile (76-99 percentile)		3rd Quartile (51-75 percentile)		2nd Quartile (26-50 percentile)		1st Quartile (1-25 percentile)	
	School	District	School	District	School	District	School	District
07-08	8.33%	25.65%	19.44%	24.08%	38.89%	23.73%	33.33%	26.55%
06-07	31.3%	33.1%	21.9%	26.1%	21.9%	23.6%	25.0%	17.2%
05-06	25.0%	30.4%	29.2%	26.8%	29.2%	24.5%	16.7%	18.3%
04-05	33.3%	29.2%	36.4%	27.6%	18.2%	24.5%	12.1%	18.7%
03-04	34.8%	30.6%	21.7%	26.9%	23.9%	24.2%	19.6%	18.3%
Language								
07-08	16.67%	26.79%	19.44%	27.20%	25.00%	24.12%	38.89%	21.89%
06-07	31.3%	34.7%	28.1%	26.9%	12.5%	21.4%	28.1%	17.0%
05-06	33.3%	34.0%	18.8%	26.5%	27.1%	22.0%	20.8%	17.5%
04-05	30.3%	32.1%	30.3%	28.3%	30.3%	21.2%	9.1%	18.4%
03-04	30.4%	34.1%	23.9%	26.5%	32.6%	21.7%	13.0%	17.7%
Mathematics								
07-08	8.33%	25.45%	25.00%	26.40%	33.33%	24.47%	33.33%	23.68%
06-07	34.4%	29.7%	18.8%	31.6%	25.0%	21.2%	21.9%	17.4%
05-06	29.2%	28.4%	31.3%	31.9%	20.8%	22.3%	18.8%	17.5%
04-05	30.3%	26.9%	21.2%	31.1%	36.4%	22.9%	12.1%	19.1%
03-04	19.6%	28.3%	32.6%	29.3%	28.3%	22.6%	19.6%	19.8%

The double bold line indicates a change from the TerraNova 2nd edition to the TerraNova 3rd edition.

2007-08 TerraNova 3rd Edition Grade 5 Percent and Count of Students in Each Quartile For Turnagain Elementary School



Climate Survey Results for Turnagain Elementary School

The Anchorage School District administered the School Climate and Connectedness Surveys in spring 2008 to students in grades 5-12, all school staff and parents/guardians of students in grades K-12. The surveys were done to provide schools with information about perceptions and experiences related to school climate for use in setting school goals and redirecting resources. In the spring of 2008 grades 3 and 4 students were involved in a pilot survey for measuring school climate and connectedness. The results are currently under review by the American Institutes for Research.

Respondents were asked to answer a series of questions that were related to a certain concept. For each item, there were five options from which to choose a response. The answer options ranged from strongly disagree (1) to strongly agree (5).

Student Survey Response Rate Grades 5-12			
	Turnagain Elementary School	Overall Elementary Schools	District**
# Surveys Completed	57	5,579	21,629
# Reportable Surveys	47	4,969	18,654
# Students Enrolled*	72	6,331	28,945
Reportable Response Rate	65.28%	78.49%	64.45%

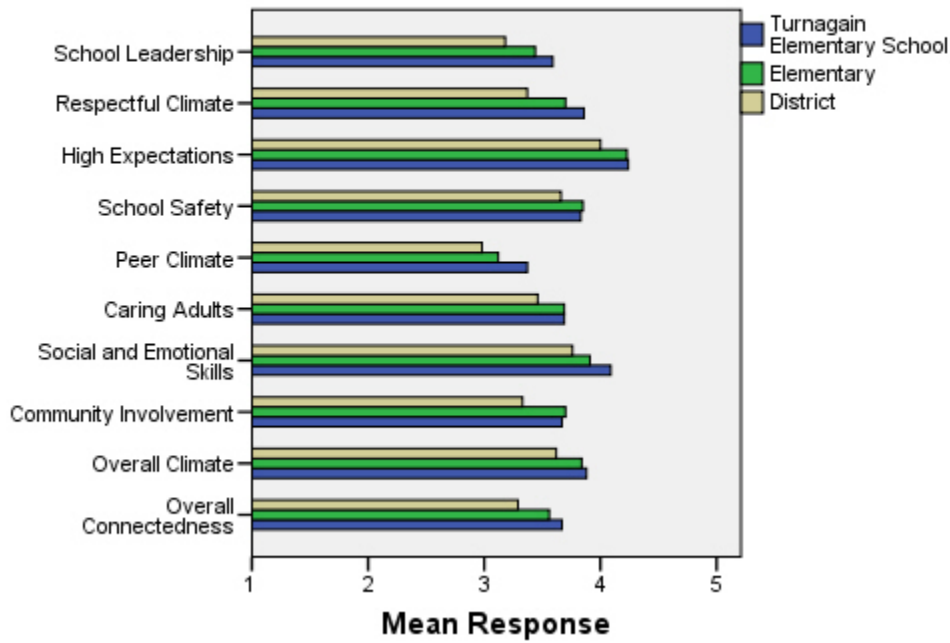
*Number enrolled as of April 1, 2008

**District data does not include KCC responses

Each question in the survey related to a factor or concept, and a score was calculated based on the mean response for the questions related to each factor. The factors measured in the survey were:

- **School Leadership and Student Involvement:** This factor reflects students' feelings about the decision making of school leaders as well as student participation in the school governance. Students selected responses between 1 and 5 where 1 indicates a low level of school leadership and student involvement and 5 indicates a high level of school leadership and student involvement.
- **Respectful Climate:** This factor reflects students' feelings about fairness of rules and respect for students' contributions. Students selected responses between 1 and 5 where 1 indicates a lack of a respectful climate and 5 indicates a highly respectful climate for students.
- **High Expectations:** This factor reflects students' feelings about their own expectations as well as those of adults in their school and community. Students selected responses between 1 and 5 where 1 indicates a lack of high expectations and 5 indicates a high level of high expectations.
- **School Safety:** This factor reflects students' feelings about bullies and gangs at school as well as general crime and violence in the community. Students selected responses between 1 and 5 where 1 indicates a low level of school safety and 5 indicates a high level of school safety.
- **Peer Climate:** This factor reflects students' feelings about how respectful students are to one another and how helpful students are to other students. Students selected responses between 1 and 5 where 1 indicates a more negative peer climate and 5 indicates a very positive peer climate at the school.
- **Caring Adults:** This factor reflects students' feelings about how close they feel to adults in the school. Students selected responses between 1 and 5 where 1 indicates a lack of caring adult relationships and 5 indicates strong caring adult relationships at the school.
- **Social and Emotional Learning:** This factor reflects students' ability to think about the consequences of their actions and to empathize with others. Students selected responses between 1 and 5 where 1 indicates that students at the school perceive themselves as having poorer social and emotional learning, and 5 indicates higher levels of social and emotional learning.
- **Community Involvement:** This factor reflects students' feelings about how supportive and welcoming the school is with parents and the community. Students selected responses between 1 and 5 where 1 indicates a less supportive and welcoming environment and 5 indicates a more supportive and welcoming environment.
- **Overall Climate:** The overall climate score was computed as the mean of three scales: school leadership, high expectations and school safety.
- **Overall Connectedness:** Overall connectedness score was computed as a mean of four scales: respectful climate, peer climate, caring adults and community involvement.

Climate and Connectedness Student Survey - Turnagain



Student Survey Mean Response by Factors Related to School Climate - Overall District			
	Turnagain Elementary School	Overall Elementary Schools	District
School Leadership	3.59	3.44	3.18
Respectful Climate	3.86	3.70	3.37
High Expectations	4.24	4.23	4.00
School Safety	3.83	3.85	3.66
Peer Climate	3.37	3.12	2.98
Caring Adults	3.69	3.69	3.46
Social and Emotional Skills	4.09	3.91	3.76
Community Involvement	3.67	3.70	3.33
Overall Climate	3.88	3.84	3.62
Overall Connectedness	3.67	3.56	3.29

Range is from a low of 1 to a high of 5

Students were also asked to answer questions related to school danger. The following table provides the responses for those questions:

Student Survey Results of the School Danger Questions - Percent of Students Responding in Each Category					
	0 Times	1-2 Times	3-6 Times	7-12 Times	> 12 Times
Turnagain Elementary School					
Under the influence of drugs?	95.12%	0.00%	2.44%	2.44%	0.00%
Under the influence of alcohol?	80.49%	12.20%	2.44%	0.00%	4.88%
Destroy things (vandalism)?	39.02%	41.46%	14.63%	2.44%	2.44%
Get into fights?	12.20%	29.27%	34.15%	7.32%	17.07%
Steal things?	41.46%	31.71%	14.63%	7.32%	4.88%
Threaten or bully?	34.15%	39.02%	7.32%	7.32%	12.20%
Under the influence of inhalants?	80.95%	7.14%	7.14%	0.00%	4.76%
Carry weapons?	82.93%	12.20%	2.44%	0.00%	2.44%
Overall Elementary Schools					
Under the influence of drugs?	91.87%	5.65%	1.22%	0.31%	0.96%
Under the influence of alcohol?	91.42%	6.01%	1.16%	0.51%	0.90%
Destroy things (vandalism)?	46.82%	32.08%	12.45%	3.30%	5.36%
Get into fights?	22.32%	35.75%	22.56%	7.96%	11.41%
Steal things?	49.79%	27.92%	12.01%	4.33%	5.95%
Threaten or bully?	32.34%	28.83%	17.08%	7.78%	13.97%
Under the influence of inhalants?	71.03%	17.07%	6.14%	2.63%	3.12%
Carry weapons?	79.22%	15.35%	3.17%	0.59%	1.68%
District					
Under the influence of drugs?	60.45%	15.05%	9.54%	3.92%	11.04%
Under the influence of alcohol?	63.11%	16.37%	8.90%	4.43%	7.19%
Destroy things (vandalism)?	41.26%	29.47%	15.45%	5.88%	7.94%
Get into fights?	26.40%	35.20%	21.96%	7.11%	9.33%
Steal things?	44.80%	25.68%	13.81%	6.98%	8.74%
Threaten or bully?	32.21%	26.21%	16.68%	9.27%	15.63%
Under the influence of inhalants?	72.79%	14.21%	5.66%	2.48%	4.87%
Carry weapons?	69.45%	19.15%	5.34%	2.01%	4.06%

Student Survey Results of the Mean Factor Score by Ethnicity (Self-Reported)							
	AKNA/AI	AF AM	Hispanic	Asian/NH	White	Other	Multi-Ethnic
Turnagain Elementary School							
School Leadership	3.53	4.30	***	4.00	3.22	4.00	3.40
Respectful Climate	4.15	3.92	3.25	3.96	3.63	3.86	3.96
High Expectations	4.36	4.57	3.71	4.14	4.22	4.29	4.29
School Safety	4.09	4.60	2.50	4.40	3.82	3.57	3.92
Peer Climate	3.71	3.60	2.40	3.80	3.02	3.10	3.64
Caring Adults	3.58	4.30	4.10	3.93	3.56	3.69	3.70
Social and Emotional Skills	3.99	4.37	4.47	4.18	3.99	4.20	4.09
Community Involvement	3.73	4.57	3.21	4.10	3.65	3.26	3.86
Overall Climate	3.99	4.49	***	4.07	3.62	3.95	3.78
Overall Connectedness	3.83	4.30	3.17	3.97	3.47	3.42	3.95
Overall Elementary Schools							
School Leadership	3.56	3.50	3.52	3.55	3.37	3.44	3.42
Respectful Climate	3.75	3.60	3.66	3.72	3.71	3.69	3.63
High Expectations	4.12	4.23	4.23	4.22	4.26	4.19	4.25
School Safety	3.75	3.63	3.73	3.68	4.03	3.66	3.79
Peer Climate	3.12	2.94	3.12	3.18	3.16	3.05	3.05
Caring Adults	3.64	3.73	3.64	3.59	3.74	3.60	3.76
Social and Emotional Skills	3.86	3.84	3.91	3.95	3.93	3.90	3.89
Community Involvement	3.66	3.60	3.67	3.66	3.75	3.66	3.70
Overall Climate	3.81	3.79	3.84	3.81	3.89	3.76	3.82
Overall Connectedness	3.56	3.49	3.51	3.53	3.60	3.49	3.56
District							
School Leadership	3.33	3.14	3.19	3.28	3.14	3.17	3.15
Respectful Climate	3.48	3.18	3.32	3.39	3.39	3.37	3.33
High Expectations	3.98	3.94	3.96	4.02	4.02	4.00	4.01
School Safety	3.60	3.48	3.55	3.47	3.78	3.51	3.62
Peer Climate	3.01	2.85	2.94	3.05	3.00	2.92	2.93
Caring Adults	3.49	3.43	3.37	3.33	3.51	3.42	3.46
Social and Emotional Skills	3.73	3.66	3.73	3.81	3.78	3.75	3.74
Community Involvement	3.37	3.22	3.31	3.29	3.34	3.34	3.31
Overall Climate	3.64	3.52	3.57	3.59	3.65	3.56	3.60
Overall Connectedness	3.33	3.17	3.24	3.26	3.31	3.26	3.27

***Results can not be calculated because of missing responses

The response rate is not high enough to provide statistically reliable results for Turnagain Elementary School's Staff Survey Results.

Parent/Guardian Survey Response Rate			
	Turnagain Elementary School	Overall Elementary Schools	District**
# Surveys Completed	81	3,933	7,415
# Primary Guardians*	410	23,668	48,693
Response Rate	19.76%	16.62%	15.23%

*Number students enrolled as of April 1, 2008 without dual guardians included

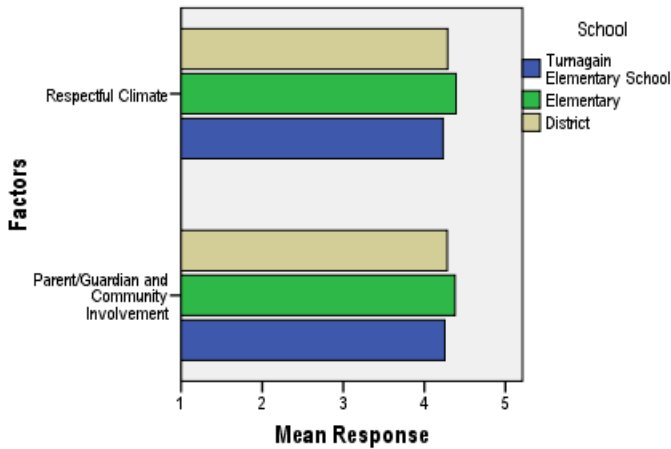
**District data

- 1) does not include KCC responses;
- 2) does include responses without a school designation

Two factors are calculated from the Parent/Guardian Survey. All results other than the factor scores below are reported by individual question: questions in the graphs are condensed phrases from the full question, while questions in the tables are the full question.

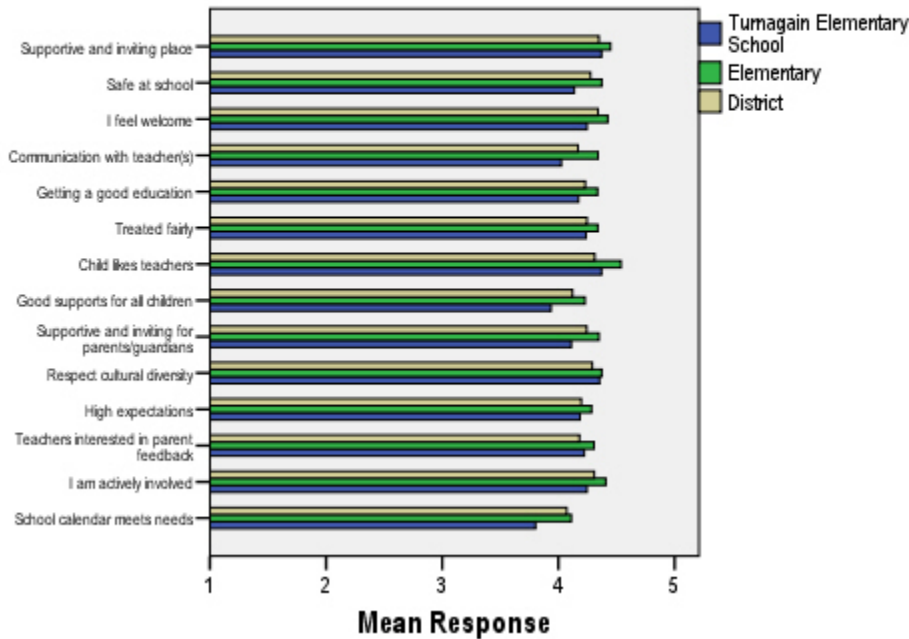
- **Respectful Climate:** This factor is calculated by determining the mean of five questions: 1) My child’s school is a supportive and inviting place, 2) I feel welcome at this school, 3) I am satisfied with communication with my child’s teacher(s), 4) This school is a supportive and inviting place for parents/guardians and 5) Adults at this school respect cultural diversity.
- **Parent/Guardian and Community Involvement:** This factor is calculated by determining the mean of five questions: 1) I feel welcome at this school, 2) This school is a supportive and inviting place for parents/guardians, 3) Adults at this school respect cultural diversity, 4) Teacher’s at my child’s school are interested in what I have to say and 5) I feel like I am actively involved in my child’s education.

Parent/Guardian Survey Mean Factor Scores (Range is from a low of 1 to a high of 5)



Parent/Guardian Factor Scores			
	Turnagain Elementary School	Overall Elementary Schools	District
Respectful Climate	4.23	4.39	4.29
Parent/Guardian and Community Involvement	4.25	4.38	4.28

Climate and Connectedness Parent/Guardian Survey - Turnagain



Parent/Guardian Mean Response by Questions Related to School Climate - Overall

	Turnagain Elementary School	Overall Elementary Schools	District
My child's school is a supportive and inviting place	4.37	4.45	4.35
My child is safe at school	4.14	4.37	4.28
I feel welcome at this school	4.25	4.43	4.34
I am satisfied with communication with my child's teacher(s)	4.02	4.34	4.17
My child is getting a good education at this school	4.17	4.34	4.23
My child is treated fairly at school	4.24	4.34	4.25
My child likes his/her teachers	4.37	4.54	4.31
At this school, there are good supports for all children, including children with learning disabilities	3.94	4.23	4.12
This school is a supportive and inviting place for parents/guardians	4.11	4.35	4.24
Adults at this school respect cultural diversity	4.35	4.37	4.29
Adults at this school have high expectations of my child	4.19	4.29	4.20
Teachers at my child's school are interested in what I have to say	4.22	4.31	4.18
I feel like I am actively involved in my child's education	4.25	4.41	4.31
The district's school calendar meets the needs of my child and our family	3.80	4.11	4.07

Range is from a low of 1 to a high of 5

Parent/Guardian Mean Response by Questions Related to School Climate by Ethnicity (Self-Reported)							
Turnagain Elementary School	AKNA/AI	AF AM	Hispanic	Asian/NH	White	Other	ME
My child's school is a supportive and inviting place	5.00	5.00	5.00	5.00	4.30	3.00	4.89
My child is safe at school	5.00	5.00	5.00	5.00	4.08	2.00	4.25
I feel welcome at this school	4.00	5.00	5.00	4.00	4.18	2.50	5.00
I am satisfied with communication with my child's teacher(s)	5.00	5.00	5.00	4.00	3.90	3.00	4.44
My child is getting a good education at this school	4.50	5.00	5.00	4.00	4.10	3.00	4.67
My child is treated fairly at school	5.00	5.00	5.00	4.00	4.17	3.50	4.44
My child likes his/her teachers	5.00	5.00	4.67	5.00	4.28	4.00	4.78
At this school, there are good supports for all children, including children with learning disabilities	4.00	5.00	5.00	4.00	3.91	1.00	4.44
This school is a supportive and inviting place for parents/guardians	4.00	5.00	5.00	4.00	4.08	1.50	4.78
Adults at this school respect cultural diversity	4.50	5.00	5.00	4.00	4.27	3.50	4.89
Adults at this school have high expectations of my child	4.50	5.00	5.00	4.00	4.15	2.00	4.67
Teachers at my child's school are interested in what I have to say	5.00	5.00	5.00	3.00	4.18	3.50	4.44
I feel like I am actively involved in my child's education	5.00	5.00	5.00	4.00	4.13	4.50	4.44
The district's school calendar meets the needs of my child and our family	4.50	5.00	4.00	5.00	3.72	1.00	4.44
Overall Elementary Schools							
My child's school is a supportive and inviting place	4.47	4.36	4.51	4.44	4.47	4.26	4.46
My child is safe at school	4.42	4.40	4.42	4.36	4.38	4.23	4.35
I feel welcome at this school	4.37	4.38	4.47	4.48	4.44	4.27	4.49
I am satisfied with communication with my child's teacher(s)	4.40	4.30	4.45	4.36	4.35	4.19	4.35
My child is getting a good education at this school	4.40	4.28	4.44	4.40	4.33	4.04	4.38
My child is treated fairly at school	4.34	4.15	4.37	4.32	4.38	4.14	4.33
My child likes his/her teachers	4.52	4.41	4.47	4.53	4.57	4.49	4.55
At this school, there are good supports for all children, including children with learning disabilities	4.32	4.06	4.31	4.31	4.22	4.05	4.31
This school is a supportive and inviting place for parents/guardians	4.31	4.22	4.42	4.38	4.36	4.11	4.44
Adults at this school respect cultural diversity	4.28	4.25	4.38	4.27	4.43	4.19	4.39
Adults at this school have high expectations of my child	4.30	4.26	4.36	4.27	4.31	3.95	4.28
Teachers at my child's school are interested in what I have to say	4.35	4.25	4.39	4.24	4.33	4.16	4.31
I feel like I am actively involved in my child's education	4.38	4.48	4.40	4.31	4.45	4.20	4.40
The district's school calendar meets the needs of my child and our family	4.22	4.25	4.20	4.19	4.10	3.62	4.08
District							
My child's school is a supportive and inviting place	4.37	4.20	4.41	4.37	4.37	4.20	4.37
My child is safe at school	4.31	4.18	4.29	4.31	4.29	4.11	4.30
I feel welcome at this school	4.31	4.18	4.38	4.36	4.36	4.23	4.40
I am satisfied with communication with my child's teacher(s)	4.21	3.99	4.32	4.23	4.16	4.03	4.20
My child is getting a good education at this school	4.28	4.09	4.33	4.31	4.23	4.03	4.26
My child is treated fairly at school	4.21	3.94	4.30	4.24	4.29	4.08	4.24
My child likes his/her teachers	4.33	4.06	4.31	4.35	4.33	4.20	4.34
At this school, there are good supports for all children, including children with learning disabilities	4.19	3.90	4.24	4.23	4.11	3.97	4.18
This school is a supportive and inviting place for parents/guardians	4.21	4.05	4.31	4.29	4.26	4.05	4.31
Adults at this school respect cultural diversity	4.20	4.02	4.29	4.22	4.34	4.17	4.31
Adults at this school have high expectations of my child	4.24	4.05	4.26	4.21	4.21	3.94	4.20
Teachers at my child's school are interested in what I have to say	4.22	4.04	4.28	4.17	4.20	4.05	4.19
I feel like I am actively involved in my child's education	4.29	4.36	4.37	4.24	4.33	4.20	4.30
The district's school calendar meets the needs of my child and our family	4.19	4.18	4.21	4.16	4.06	3.66	4.02

Range is from a low of 1 to a high of 5