

Wendler Middle School Overview

Statement of Program

Wendler is a vibrant, diverse and caring middle school serving students in grades 7-8. This urban, digitally literate school is home to approximately 800 students. As a community of active learners we focus on academic challenges and thorough preparation for high school and beyond. In addition, Wendler provides skill remediation targeted to academic improvement bringing students up to and above grade level.

As a functioning and inclusive middle school, Wendler provides a wide ranging and exploration-based elective program engaging students, often for the first time, in the arts. Students, parents and staff take pride in Wendler's role as a community partner and students participate in service projects that enrich that experience. Parents work directly with teachers and staff to foster academic success for our students and promote direct connections with local businesses, including a functioning branch of a local credit union here at the school.

Wendler is a safe and caring place, with a positive and secure climate that promotes individual responsibility and academic growth. Wendler's friendly and helpful atmosphere breaks down barriers and supports an active and creative learning environment.

From the School Report Card

School Goals	
Goal	Level of Achievement
The number of students rated proficient on the state language arts assessment will increase by 3 percent. The percentage of students rated not proficient in all subcategories in which the school did not meet Adequate Yearly Progress will decrease by 10.	Partially Attained
The number of students rated proficient on the state math assessment will increase by 3 percent. The number of students rated not proficient in all subcategories in which the school did not meet Adequate Yearly Progress will decrease by 10 percent.	Partially Attained
Wendler will focus on customer service and school safety achieving an above average score on at least 60 percent of the measures in the annual School Climate and Connectedness Survey.	Attained

From the School Report Card

Budget*	
2006-07 Actual Expenditures	\$5,472,934
2007-08 Revised Budgeted Amount	\$6,049,376
2008-09 Proposed Budget	\$5,879,268

*Dollars budgeted or expended are general fund only
From IFAS

Wendler Middle School Characteristics			
	School	District	Source of Information
Membership	772	48,858	Fall OASIS
Capacity	105.63%	N/A	2008-18 ASD Capital Improvement Plan
Attendance Rate	91.52%	92.83%	NCLB Summer Data Collection
Retention Rate K-8	0.00%	0.60%	SMS and NCLB Summer Data Collection
Transiency Rate	22.59%	26.07%	NCLB Summer Data Collection
Economically Disadvantaged	393	17,717	Fall OASIS
Average Weekly Volunteer Hours	30	4,660	Department of Education Report Card Report
Dropout Rate	0.79%	3.93%	NCLB Summer Data Collection & Fall Oasis
Students Taking the Alternate Assessment	12	228	SMS
Change in Enrollment	-8.31%	-0.76%	Fall Oasis

Teacher Qualification				
Number of Teachers	Percent Fully Licensed	Percent With Advanced Degrees	Number Nationally Board Certified	Percent of Classes Taught by "Highly Qualified Teachers"
59	100.00%	37.28%	0	86.53%

Wendler Middle School Business Partnerships
Alaska Wild Professional Football Team; USKH; Denali Alaskan Federal Credit Union; Lone Star Steakhouse; Anchorage Fire Department; NECA/IBEW

From the School Report Card

Ethnicity Report							
African-American/Black	Alaska Native/American Indian	Asian	Native Hawaiian/Other Pacific Islander	White	Hispanic	Multi-Ethnic	Total
55	92	99	31	286	92	117	772

From Fall Oasis

Full Academic Year		
Students Enrolled	Students Enrolled for FAY	Percent FAY
752	693	92.15%

From participation file (Grades 3-10)

Total Dropout Rate - Wendler Middle School								
	African-American/Black	Alaska Native/American Indian	Asian	Native Hawaiian/Other Pacific Islander	White	Hispanic	Multi-Ethnic	Total
Enrollment	54	91	99	31	284	89	114	762
Final Dropouts	*	*	*	*	*	*	*	6
% of Dropouts	0.00%	1.10%	0.00%	0.00%	0.35%	2.25%	1.75%	0.79%

From NCLB Summer Data Collection and Fall OASIS

* Results cannot be published without releasing personally identifiable information based upon the EED reporting protocol

**Wendler Middle School
2007-08 Adequate Yearly Progress
Status Report**

Does Not Meet AYP
Level 5

AMO For Language Arts: 77.18%
AMO For Mathematics: 66.09%

Group	Participation Rate				"FAY" (D) Tested & Enrolled "FAY"	Language Arts Performance				Mathematics Performance			
	(A) Number Enrolled	(B) Number Tested	Participation Rate (%)	(C) Participation Rate Met		(E) Proficient on LA	(F) Percent Proficient on LA	(G) LA Target	(H) Met AMO for LA	(I) Proficient on Mathematics	(J) Percent Proficient in Mathematics	(K) Mathematics Target	(L) Met AMO for Mathematics
All Students	751	744	99.1%	Yes	685	518	75.6%	73.4%	Yes	437	63.8%	61.9%	Yes
AF AM	56	56	100%	Yes	50	31	62%	63.4%	No	17	34%	50.5%	No
AKNA/AI	84	83	98.8%	Yes	73	41	56.2%	65.7%	No	32	43.8%	53.2%	No
Asian/NH/OPI	132	131	99.2%	Yes	123	88	71.5%	68.4%	Yes	71	57.7%	56.1%	Yes
White	278	274	98.6%	Yes	263	226	85.9%	71.2%	Yes	205	77.9%	59.3%	Yes
Hispanic	87	86	98.9%	Yes	77	59	76.6%	66%	Yes	50	64.9%	53.5%	Yes
ME	114	114	100%	Yes	99	73	73.7%	67.4%	Yes	62	62.6%	55%	Yes
EDS	388	385	99.2%	Yes	340	224	65.9%	71.9%	No	190	55.9%	60.1%	No
SWD	148	147	99.3%	Yes	138	45	32.6%	68.9%	No	37	26.8%	56.7%	No
LEP	180	179	99.4%	Yes	165	110	66.7%	69.6%	Yes-SH	90	54.5%	57.5%	No

Attendance Rate: Met

91.5% (Threshold is 85%)

N/A is used to indicate:

- (1) Subgroups with 20 or fewer students enrolled on the first day of testing shall not be included in participation rate calculation.
- (2) Subgroups with 25 or fewer students enrolled for the "full academic year" shall not have the performance score computed.

* For the groups where the number enrolled is less than or equal to 40, participation is met when no more than two miss the test. Groups can also meet this target using the average of the past two or three years.

** When a group achieves a "Yes" without meeting the listed target, it has done so using either the 99% confidence interval or Safe Harbor.

*** The results cannot be published without releasing personally identifiable information based upon the EED reporting protocol.

This document was prepared by the ASD Assessment and Evaluation Department.

7/10/2008

Wendler Middle School
2007-08 Adequate Yearly Progress
Growth Report

The AYP growth reports are generated by the Alaska State Department of Education and Early Development. The reports can be found online at: http://www.asdk12.org/depts/assess_eval/AYP/State_ASD_AYG_0708.pdf

SBA Proficiency Comparison by Grade for Wendler Middle School																
	Reading Percent Proficient				Writing Percent Proficient				Mathematics Percent Proficient				Science* Percent Proficient			
	04-05	05-06	06-07	07-08	04-05	05-06	06-07	07-08	04-05	05-06	06-07	07-08	04-05	05-06	06-07	07-08
All Students	70.24%	79.60%	85.32%	83.22%	66.09%	76.06%	74.84%	69.51%	53.41%	62.09%	71.48%	63.17%	N/A	N/A	N/A	40.72%
Grade 7	68.02%	77.94%	85.32%	81.84%	65.17%	77.45%	77.81%	69.55%	54.16%	62.35%	75.37%	63.94%	N/A	N/A	N/A	N/A
Grade 8	72.86%	81.12%	85.32%	84.55%	67.18%	74.77%	71.89%	69.46%	52.53%	61.85%	67.58%	62.43%	N/A	N/A	N/A	40.72%

* 2007-08 was the first year Science was administered for grades 4, 8 and 10 on the SBA.

SBA Proficient & Not Proficient by NCLB Groups for Wendler Middle School								
	Reading		Writing		Mathematics		Science	
	Percent Proficient	Percent Not Proficient	Percent Proficient	Percent Not Proficient	Percent Proficient	Percent Not Proficient	Percent Proficient	Percent Not Proficient
All Students	83.22%	16.78%	69.51%	30.49%	63.17%	36.83%	40.72%	59.28%
AF AM	74.55%	25.45%	57.41%	42.59%	37.04%	62.96%	20.83%	79.17%
AKNA/AI	63.64%	36.36%	42.31%	57.69%	40.54%	59.46%	20.00%	80.00%
Asian	82.65%	17.35%	69.39%	30.61%	60.61%	39.39%	26.92%	73.08%
NH/OPI	74.19%	25.81%	58.06%	41.94%	51.61%	48.39%	27.27%	72.73%
White	91.48%	8.52%	82.29%	17.71%	77.70%	22.30%	60.81%	39.19%
Hispanic	87.95%	12.05%	71.08%	28.92%	62.35%	37.65%	25.00%	75.00%
Multi-Ethnic	80.53%	19.47%	65.49%	34.51%	61.95%	38.05%	36.96%	63.04%
EDS	76.53%	23.47%	58.78%	41.22%	54.50%	45.50%	22.75%	77.25%
Non-EDS	90.34%	9.66%	80.97%	19.03%	72.62%	27.38%	56.19%	43.81%
SWD	41.53%	58.47%	19.33%	80.67%	19.66%	80.34%	14.81%	85.19%
Non-SWD	91.30%	8.70%	79.31%	20.69%	71.55%	28.45%	45.28%	54.72%
LEP	64.55%	35.45%	43.64%	56.36%	33.93%	66.07%	7.41%	92.59%
Not LEP	86.55%	13.45%	74.11%	25.89%	68.52%	31.48%	46.58%	53.42%
Migrant	72.73%	27.27%	59.09%	40.91%	52.27%	47.73%	26.32%	73.68%
Not Migrant	83.89%	16.11%	70.18%	29.82%	63.88%	36.12%	41.52%	58.48%
Female	87.00%	13.00%	78.78%	21.22%	63.66%	36.34%	36.92%	63.08%
Male	79.14%	20.86%	59.54%	40.46%	62.64%	37.36%	45.18%	54.82%

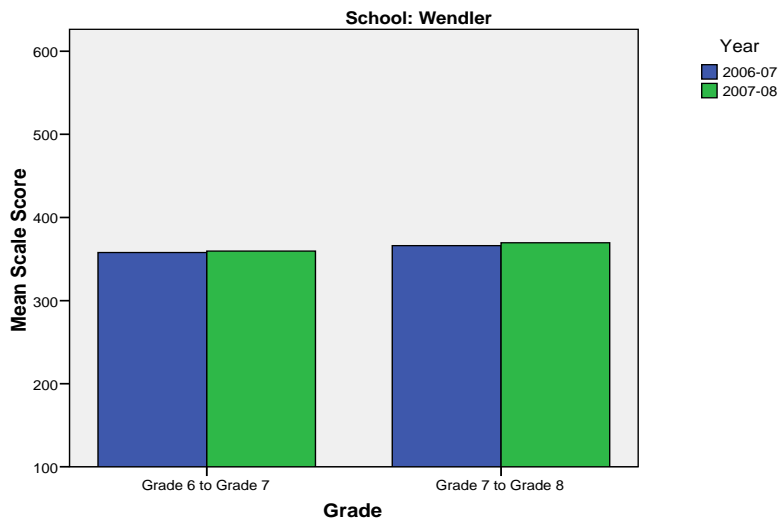
SBA Mean Scale Score Comparison by NCLB Groups for Wendler Middle School								
	Reading		Writing		Mathematics		Science**	
	06-07	07-08	06-07	07-08	06-07	07-08	06-07	07-08
All Students	369.13	363.22	344.55	336.76	339.91	328.29	N/A	288.12
AF AM	353.09	338.20	329.63	306.57	313.15	283.96	N/A	248.00
AKNA/AI	342.21	334.49	313.42	293.38	310.87	292.68	N/A	244.15
Asian	350.52*	345.68	335.34*	326.20	336.20*	327.57	N/A	268.46
NH/OPI	N/A	332.29	N/A	312.65	N/A	298.03	N/A	242.73
White	390.28	390.54	365.69	366.14	362.93	356.03	N/A	322.97
Hispanic	353.18	360.08	321.00	338.84	309.63	321.01	N/A	280.43
ME	360.37	355.70	334.45	324.90	334.52	321.19	N/A	274.98
EDS	347.74	343.25	319.76	313.55	316.86	307.90	N/A	257.66
Non-EDS	384.49	384.50	362.38	361.55	356.66	350.51	N/A	314.35
SWD	297.23	296.62	271.19	259.79	272.01	255.73	N/A	231.30
Non-SWD	380.77	376.13	356.31	351.80	350.68	342.26	N/A	298.12
LEP	339.07	312.25	316.96	286.49	316.58	278.69	N/A	235.85
Not LEP	374.88	372.31	349.83	345.71	344.49	337.36	N/A	297.32
Migrant	339.66	339.00	312.66	319.68	304.43	306.09	N/A	259.58
Not Migrant	370.48	364.78	346.00	337.86	341.52	329.73	N/A	289.71
Female	376.53	369.94	358.10	352.20	337.92	329.57	N/A	284.84
Male	361.09	355.98	329.83	320.17	342.04	326.91	N/A	291.98

* Prior to 2007-08 the Asian category includes Native Hawaiian/Other Pacific Islander. In 2007-08 Native Hawaiian/Other Pacific Islander is a separate ethnic category.

** 2007-08 was the first year Science was administered for grades 4, 8 and 10 on the SBA.

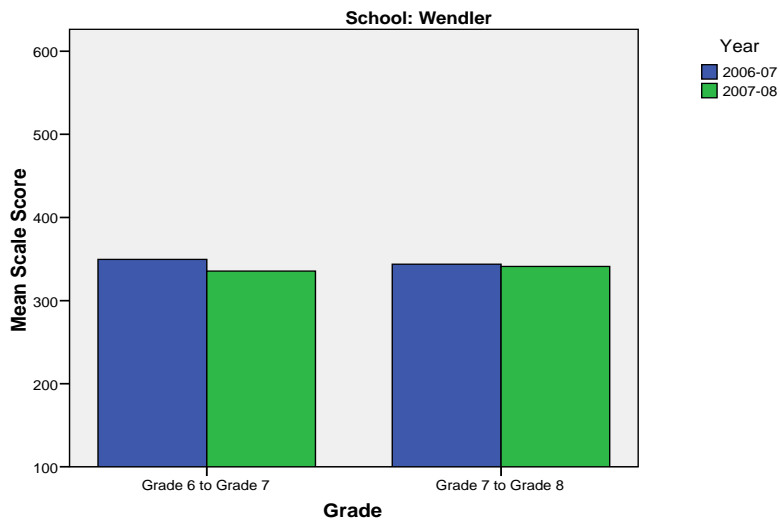
Wendler Middle School SBA Change Average Scale Score by NCLB Groups: Reading						
	Average Scale Score of Students Tested in District Both Years			Average Scale Score of Students Tested in District Both Years		
	Grade 6-in 06-07	Grade 7 in 07-08	Difference	Grade 7-in 06-07	Grade 8 in 07-08	Difference
All Students	357.77	359.65	1.89	366.14	369.50	3.36
African-American/Black	327.52	329.69	2.17	340.76	347.57	6.81
Alaska Native/American Indian	343.23	345.77	2.53	325.66	333.03	7.38
Asian	336.95	337.12	0.16	346.38	351.98	5.60
Native Hawaiian/Other Pacific Islander	330.50	326.69	-3.81	321.00	312.00	-9.00
White	380.22	383.33	3.11	401.04	401.21	0.17
Hispanic	356.39	356.58	0.18	349.97	358.75	8.78
Multi-Ethnic (2 or More Races)	359.64	362.52	2.89	345.02	349.65	4.63
Economically Disadvantaged	342.62	341.73	-0.89	339.74	343.73	3.99
Non-Economically Disadvantaged	377.53	383.04	5.51	387.72	390.56	2.85
Students with Disabilities	296.77	295.16	-1.61	289.78	302.76	12.98
Students without Disabilities	371.77	374.46	2.69	377.87	379.75	1.88
LEP	306.88	303.35	-3.53	304.39	315.00	10.61
Not LEP	367.00	369.87	2.87	375.38	377.66	2.28
Migrant	350.95	341.00	-9.95	335.89	333.61	-2.28
Not Migrant	358.25	360.97	2.73	367.84	371.52	3.68
Female	364.80	366.96	2.16	370.07	375.06	4.99
Male	350.81	352.43	1.61	361.51	362.94	1.43

Change in Mean Scale Score in SBA Reading by Grade Between 2006-07 and 2007-08



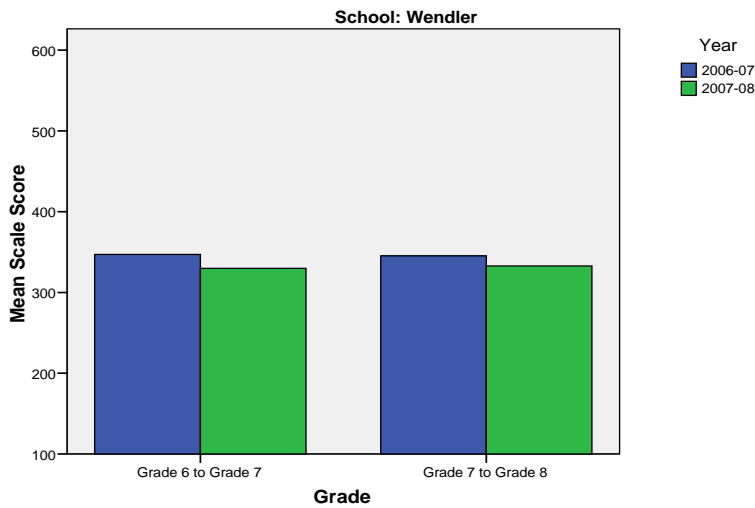
Wendler Middle School SBA Change Average Scale Score by NCLB Groups: Writing						
	Average Scale Score of Students Tested in District Both Years			Average Scale Score of Students Tested in District Both Years		
	Grade 6-in 06-07	Grade 7 in 07-08	Difference	Grade 7-in 06-07	Grade 8 in 07-08	Difference
All Students	349.55	335.40	-14.15	343.88	341.18	-2.70
African-American/Black	316.55	295.00	-21.55	323.90	318.76	-5.14
Alaska Native/American Indian	330.03	310.50	-19.53	298.73	287.70	-11.03
Asian	329.37	321.65	-7.72	326.76	329.48	2.72
Native Hawaiian/Other Pacific Islander	320.75	306.81	-13.94	309.60	301.50	-8.10
White	374.75	359.98	-14.77	379.12	375.55	-3.57
Hispanic	337.26	335.61	-1.66	322.58	338.72	16.14
Multi-Ethnic (2 or More Races)	356.79	337.59	-19.20	321.55	309.76	-11.80
Economically Disadvantaged	328.96	314.99	-13.96	315.19	312.10	-3.09
Non-Economically Disadvantaged	376.44	362.05	-14.40	367.63	365.26	-2.37
Students with Disabilities	271.58	257.85	-13.73	268.20	262.57	-5.63
Students without Disabilities	367.46	353.21	-14.25	355.72	353.48	-2.24
LEP	280.63	283.47	2.84	280.05	286.32	6.27
Not LEP	362.06	344.83	-17.23	353.37	349.34	-4.03
Migrant	339.18	332.18	-7.00	308.17	307.11	-1.06
Not Migrant	350.29	335.63	-14.66	345.88	343.09	-2.79
Female	365.21	355.28	-9.93	355.14	353.87	-1.27
Male	334.09	315.77	-18.32	330.75	326.39	-4.36

Change in Mean Scale Score in SBA Writing by Grade between 2006-07 and 2007-08



Wendler Middle School SBA Change Average Scale Score by NCLB Groups: Mathematics						
	Average Scale Score of Students Tested in District Both Years			Average Scale Score of Students Tested in District Both Years		
	Grade 6-in 06-07	Grade 7 in 07-08	Difference	Grade 7-in 06-07	Grade 8 in 07-08	Difference
All Students	347.09	329.75	-17.33	345.19	332.78	-12.41
African-American/Black	299.68	276.29	-23.39	292.52	288.00	-4.52
Alaska Native/American Indian	332.85	314.37	-18.48	301.19	283.00	-18.19
Asian	346.91	324.81	-22.09	336.16	332.96	-3.20
Native Hawaiian/Other Pacific Islander	311.75	287.81	-23.94	315.33	304.44	-10.89
White	367.98	358.70	-9.28	377.96	360.19	-17.77
Hispanic	341.47	329.39	-12.08	316.56	314.33	-2.22
Multi-Ethnic (2 or More Races)	349.03	321.58	-27.45	337.52	323.54	-13.98
Economically Disadvantaged	332.73	309.48	-23.25	320.72	310.60	-10.12
Non-Economically Disadvantaged	366.41	357.04	-9.37	365.27	350.98	-14.28
Students with Disabilities	279.64	252.68	-26.97	274.33	261.60	-12.73
Students without Disabilities	361.99	346.79	-15.21	356.18	343.82	-12.36
LEP	291.70	271.26	-20.44	292.37	288.26	-4.12
Not LEP	357.12	340.35	-16.77	352.96	339.34	-13.63
Migrant	334.00	305.14	-28.86	317.24	310.94	-6.29
Not Migrant	348.04	331.54	-16.50	346.68	333.95	-12.73
Female	349.30	337.85	-11.45	341.17	327.60	-13.57
Male	344.85	321.56	-23.29	350.01	339.01	-11.00

Change in Mean Scale Score in SBA Mathematics by Grade between 2006-07 and 2007-08



Reading: SBA Results Compared for Wendler Middle School, District and State Grades 7 and 8															
	% Advanced Proficient			% Proficient			% Below Proficient			% Far Below Proficient			% Tested		
	School	District	State	School	District	State	School	District	State	School	District	State	School	District	State
All Students	27.79%	36.46%	34.57%	55.43%	48.69%	48.62%	12.10%	11.55%	12.88%	4.68%	3.29%	3.93%	96.80%	97.85%	97.86%
AF AM	14.55%	19.00%	20.66%	60.00%	58.30%	57.93%	14.55%	17.03%	15.72%	10.91%	5.68%	5.69%	98.21%	97.86%	98.38%
AKNA/AI	16.88%	19.97%	15.19%	46.75%	52.76%	51.58%	28.57%	20.94%	25.14%	7.79%	6.33%	8.08%	91.67%	95.36%	96.93%
Asian	14.29%	28.61%	27.53%	68.37%	54.01%	53.96%	12.24%	13.72%	14.90%	5.10%	3.65%	3.60%	97.03%	97.58%	97.49%
NH/OPI	9.68%	8.40%	N/A	64.52%	53.78%	N/A	16.13%	28.57%	N/A	9.68%	9.24%	N/A	100.00%	98.76%	N/A
White	44.81%	47.51%	45.02%	46.67%	43.41%	45.22%	6.30%	7.25%	7.53%	2.22%	1.83%	2.22%	97.12%	98.46%	98.29%
Hispanic	21.69%	27.54%	28.38%	66.27%	55.39%	54.32%	*	13.17%	13.31%	*	3.89%	3.98%	95.40%	97.80%	98.00%
ME	22.12%	30.61%	32.24%	58.41%	52.80%	52.18%	14.16%	12.80%	12.02%	5.31%	3.78%	3.56%	99.12%	97.04%	97.23%
EDS	16.80%	18.54%	20.30%	59.73%	54.95%	51.97%	17.33%	20.04%	20.88%	6.13%	6.47%	6.84%	96.65%	96.31%	95.86%
Not EDS	39.49%	46.21%	43.42%	50.85%	45.29%	46.55%	6.53%	6.93%	7.91%	3.13%	1.57%	2.12%	96.97%	98.71%	99.14%
SWD	7.63%	5.65%	5.39%	33.90%	39.65%	39.16%	35.59%	37.65%	36.10%	22.88%	17.06%	19.35%	89.39%	90.81%	92.10%
Non SWD	31.69%	40.59%	38.46%	59.61%	49.91%	49.89%	7.55%	8.05%	9.78%	1.15%	1.45%	1.87%	98.38%	98.88%	98.68%
LEP	4.55%	4.34%	3.40%	60.00%	52.25%	45.68%	25.45%	31.74%	37.23%	10.00%	11.68%	13.69%	95.65%	95.57%	96.43%
Not LEP	31.93%	39.75%	38.87%	54.62%	48.33%	49.03%	9.72%	9.49%	9.52%	3.73%	2.44%	2.58%	97.01%	98.09%	98.06%
Migrant	15.91%	23.05%	18.13%	56.82%	50.51%	49.19%	*	20.34%	25.53%	*	6.10%	7.15%	97.78%	98.33%	98.16%
Not Migrant	28.55%	37.03%	35.71%	55.34%	48.62%	48.58%	11.42%	11.18%	12.00%	4.69%	3.17%	3.71%	96.74%	97.83%	97.84%
Female	28.65%	39.92%	38.60%	58.36%	49.13%	48.79%	10.61%	8.92%	10.13%	2.39%	2.04%	2.48%	97.42%	98.14%	98.03%
Male	26.86%	33.21%	30.74%	52.29%	48.29%	48.47%	13.71%	14.03%	15.49%	7.14%	4.48%	5.30%	96.15%	97.58%	97.70%

* Results cannot be published without releasing personally identifiable information based upon the EED reporting protocol

Writing: SBA Results Compared for Wendler Middle School, District and State Grades 7 and 8															
	% Advanced Proficient			% Proficient			% Below Proficient			% Far Below Proficient			% Tested		
	School	District	State	School	District	State	School	District	State	School	District	State	School	District	State
All Students	7.28%	11.86%	10.41%	62.23%	62.70%	61.09%	20.88%	18.67%	20.92%	9.62%	6.77%	7.58%	96.94%	97.97%	97.77%
AF AM	*	4.39%	4.97%	*	57.68%	58.58%	20.37%	28.29%	27.26%	22.22%	9.65%	9.19%	96.43%	97.44%	97.79%
AKNA/AI	*	3.72%	2.85%	*	50.89%	46.57%	38.46%	31.02%	34.58%	19.23%	14.38%	15.99%	92.86%	95.82%	97.09%
Asian	4.08%	9.18%	8.28%	65.31%	62.10%	62.39%	19.39%	21.87%	22.29%	11.22%	6.85%	7.04%	97.03%	97.72%	97.64%
NH/OPI	*	*	N/A	58.06%	*	N/A	35.48%	33.47%	N/A	*	16.74%	N/A	100.00%	99.17%	N/A
White	12.18%	16.21%	14.37%	70.11%	66.42%	66.50%	12.92%	13.35%	14.89%	4.80%	4.01%	4.25%	97.48%	98.59%	98.10%
Hispanic	10.84%	10.06%	8.18%	60.24%	61.71%	63.88%	24.10%	19.97%	21.03%	4.82%	8.26%	6.91%	95.40%	97.51%	97.81%
ME	2.65%	9.36%	9.88%	62.83%	62.82%	62.78%	23.01%	20.05%	20.12%	11.50%	7.78%	7.21%	99.12%	97.40%	97.23%
EDS	2.13%	3.77%	4.20%	56.65%	54.85%	53.45%	28.19%	28.17%	29.69%	13.03%	13.20%	12.66%	96.91%	96.69%	95.78%
Not EDS	12.78%	16.27%	14.27%	68.18%	66.98%	65.82%	13.07%	13.48%	15.47%	5.97%	3.26%	4.43%	96.97%	98.69%	99.05%
SWD	*	0.94%	0.72%	*	26.86%	25.75%	40.34%	42.99%	44.66%	40.34%	29.21%	28.86%	90.15%	90.71%	91.85%
Non SWD	8.54%	13.31%	11.70%	70.77%	67.49%	65.79%	17.08%	15.42%	17.76%	3.61%	3.78%	4.75%	98.38%	99.03%	98.62%
LEP	*	1.05%	0.57%	*	38.02%	31.72%	38.18%	41.62%	45.08%	18.18%	19.31%	22.63%	95.65%	95.57%	96.60%
Not LEP	8.41%	12.96%	11.78%	65.70%	65.22%	65.15%	17.80%	16.33%	17.58%	8.09%	5.49%	5.50%	97.17%	98.23%	97.94%
Migrant	*	4.38%	3.57%	56.82%	55.56%	48.98%	36.36%	27.95%	33.31%	*	12.12%	14.13%	97.78%	99.00%	98.24%
Not Migrant	7.60%	12.18%	10.89%	62.57%	63.00%	61.93%	19.88%	18.27%	20.06%	9.94%	6.55%	7.12%	96.88%	97.93%	97.74%
Female	10.08%	16.61%	14.82%	68.70%	65.43%	64.82%	16.98%	14.21%	16.01%	4.24%	3.75%	4.35%	97.42%	98.42%	98.00%
Male	4.27%	7.37%	6.23%	55.27%	60.12%	57.53%	25.07%	22.88%	25.59%	15.38%	9.63%	10.65%	96.43%	97.55%	97.56%

* Results cannot be published without releasing personally identifiable information based upon the EED reporting protocol

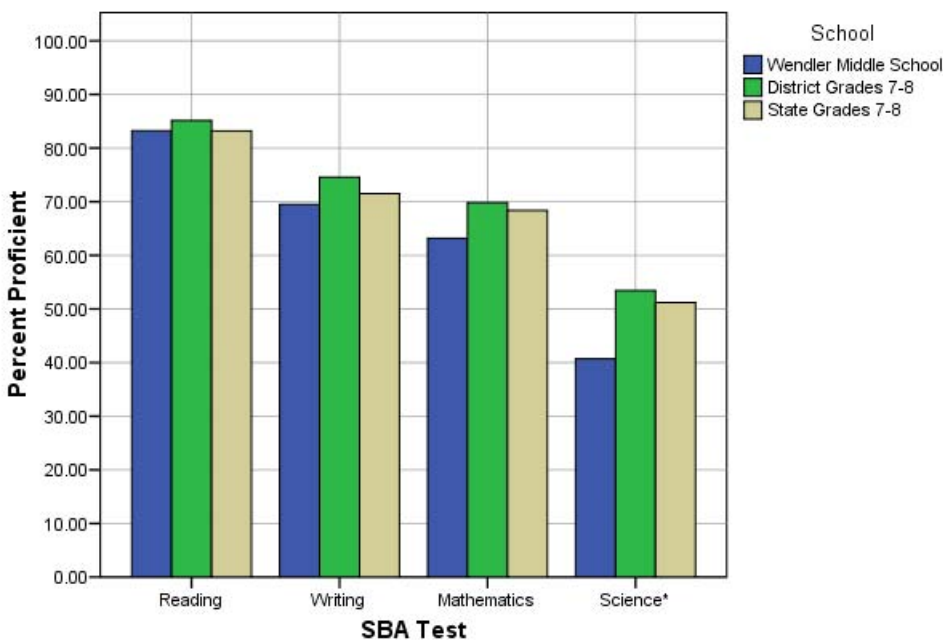
Mathematics: SBA Results Compared for Wendler Middle School, District and State Grades 7 and 8															
	% Advanced Proficient			% Proficient			% Below Proficient			% Far Below Proficient			% Tested		
	School	District	State	School	District	State	School	District	State	School	District	State	School	District	State
All Students	24.83%	31.33%	29.02%	38.34%	38.49%	39.36%	20.41%	17.87%	18.72%	16.41%	12.31%	12.90%	96.54%	97.81%	97.73%
AF AM	7.41%	12.58%	14.65%	29.63%	35.54%	36.40%	27.78%	28.26%	26.44%	35.19%	23.62%	22.51%	96.43%	96.79%	97.50%
AKNA/AI	10.81%	17.89%	14.46%	29.73%	34.80%	35.46%	32.43%	25.04%	26.44%	27.03%	22.28%	23.64%	88.10%	95.20%	96.77%
Asian	21.21%	29.58%	27.87%	39.39%	40.26%	40.20%	27.27%	18.76%	18.72%	12.12%	11.40%	13.21%	98.02%	98.72%	98.64%
NH/OPI	9.68%	6.67%	N/A	41.94%	35.42%	N/A	19.35%	26.67%	N/A	29.03%	31.25%	N/A	100.00%	99.59%	N/A
White	38.66%	40.28%	36.66%	39.03%	38.52%	40.75%	14.50%	13.95%	14.82%	7.81%	7.25%	7.77%	96.76%	98.19%	98.00%
Hispanic	20.00%	22.65%	22.24%	42.35%	40.98%	41.68%	17.65%	21.61%	22.44%	20.00%	14.75%	13.64%	97.70%	98.24%	98.48%
ME	20.35%	27.20%	28.57%	41.59%	40.12%	39.73%	19.47%	18.05%	18.13%	18.58%	14.63%	13.57%	99.12%	97.04%	96.97%
EDS	14.55%	15.55%	16.77%	39.95%	37.90%	38.20%	23.81%	24.48%	24.34%	21.69%	22.08%	20.69%	97.42%	96.54%	95.81%
Not EDS	36.02%	39.96%	36.63%	36.60%	38.82%	40.08%	16.71%	14.26%	15.23%	10.66%	6.97%	8.06%	95.59%	98.52%	98.96%
SWD	4.27%	5.81%	5.39%	15.38%	20.26%	22.07%	27.35%	26.66%	28.40%	52.99%	47.27%	44.13%	88.64%	90.17%	92.02%
Non SWD	28.78%	34.73%	32.17%	42.76%	40.92%	41.67%	19.08%	16.70%	17.43%	9.38%	7.66%	8.73%	98.22%	98.92%	98.54%
LEP	*	5.73%	4.98%	*	30.10%	27.54%	33.93%	32.01%	32.96%	32.14%	32.16%	34.52%	97.39%	97.42%	97.06%
Not LEP	29.04%	34.01%	32.36%	39.48%	39.37%	41.00%	17.94%	16.39%	16.74%	13.54%	10.23%	9.89%	96.38%	97.85%	97.82%
Migrant	15.91%	17.29%	17.58%	36.36%	40.68%	36.29%	31.82%	22.37%	25.14%	15.91%	19.66%	20.99%	97.78%	98.33%	98.08%
Not Migrant	25.40%	31.93%	29.81%	38.47%	38.40%	39.57%	19.68%	17.68%	18.28%	16.45%	11.99%	12.34%	96.46%	97.79%	97.70%
Female	24.14%	30.98%	28.90%	39.52%	39.19%	40.85%	21.49%	18.89%	19.04%	14.85%	10.94%	11.22%	97.42%	98.31%	98.00%
Male	25.57%	31.67%	29.13%	37.07%	37.83%	37.94%	19.25%	16.90%	18.42%	18.10%	13.60%	14.50%	95.60%	97.34%	97.46%

* Results cannot be published without releasing personally identifiable information based upon the EED reporting protocol

Science: SBA Results Compared for Wendler Middle School, District and State Grade 8															
	% Advanced Proficient			% Proficient			% Below Proficient			% Far Below Proficient			% Tested		
	School	District	State	School	District	State	School	District	State	School	District	State	School	District	State
All Students	20.78%	27.02%	25.2%	19.94%	26.43%	26.0%	23.82%	20.65%	21.3%	35.46%	25.90%	27.4%	94.75%	96.39%	94.91%
AF AM	*	10.34%	10.7%	*	19.40%	21.1%	25.00%	25.43%	26.1%	54.17%	44.83%	42.1%	100.00%	96.27%	94.36%
AKNA/AI	7.50%	10.33%	8.9%	12.50%	25.84%	18.0%	15.00%	21.88%	23.7%	65.00%	41.95%	49.4%	86.96%	93.47%	93.67%
Asian	11.54%	16.86%	16.1%	15.38%	22.00%	23.2%	34.62%	26.57%	25.5%	38.46%	34.57%	35.2%	96.30%	97.77%	97.29%
NH/OPI	*	6.42%	N/A	27.27%	11.93%	N/A	*	17.43%	N/A	72.73%	64.22%	N/A	100.00%	99.09%	N/A
White	34.46%	38.15%	35.1%	26.35%	29.71%	30.0%	21.62%	17.80%	19.0%	17.57%	14.34%	15.9%	96.73%	96.75%	95.14%
Hispanic	17.50%	16.57%	15.8%	7.50%	25.60%	27.5%	35.00%	27.11%	26.3%	40.00%	30.72%	30.4%	95.24%	96.79%	95.92%
ME	17.39%	21.93%	23.0%	19.57%	24.28%	24.2%	21.74%	20.37%	20.9%	41.30%	33.42%	31.9%	90.20%	95.04%	93.83%
EDS	7.19%	10.38%	12.3%	15.57%	21.96%	21.1%	25.75%	22.76%	22.7%	51.50%	44.89%	43.9%	93.82%	94.85%	93.13%
Not EDS	32.47%	35.95%	33.1%	23.71%	28.83%	29.0%	22.16%	19.52%	20.5%	21.65%	15.70%	17.4%	95.57%	97.25%	96.02%
SWD	9.26%	4.72%	4.3%	5.56%	11.32%	9.4%	11.11%	20.28%	18.8%	74.07%	63.68%	67.5%	90.00%	89.45%	89.82%
Non SWD	22.80%	30.01%	28.0%	22.48%	28.46%	28.2%	26.06%	20.70%	21.6%	28.66%	20.83%	22.1%	95.64%	97.41%	95.62%
LEP	*	2.59%	1.7%	*	7.78%	6.0%	25.93%	21.90%	18.4%	66.67%	67.72%	73.5%	96.43%	98.02%	94.82%
Not LEP	24.10%	29.64%	28.5%	22.48%	28.43%	28.8%	23.45%	20.52%	21.7%	29.97%	21.42%	21.0%	94.46%	96.22%	94.92%
Migrant	*	13.46%	11.5%	*	28.85%	20.9%	15.79%	19.87%	20.2%	57.89%	37.82%	47.4%	86.36%	93.41%	95.03%
Not Migrant	21.35%	27.63%	26.2%	20.18%	26.32%	26.4%	24.27%	20.69%	21.4%	34.21%	25.36%	26.1%	95.26%	96.54%	94.90%
Female	18.46%	25.67%	23.7%	18.46%	26.30%	27.0%	25.64%	22.06%	22.4%	37.44%	25.96%	27.0%	95.12%	96.89%	95.23%
Male	23.49%	28.29%	26.8%	21.69%	26.55%	25.1%	21.69%	19.31%	20.3%	33.13%	25.84%	27.8%	94.32%	95.93%	94.60%

* Results cannot be published without releasing personally identifiable information based upon the EED reporting protocol

2007-08 SBA Results Compared for Wendler Middle School, District and State

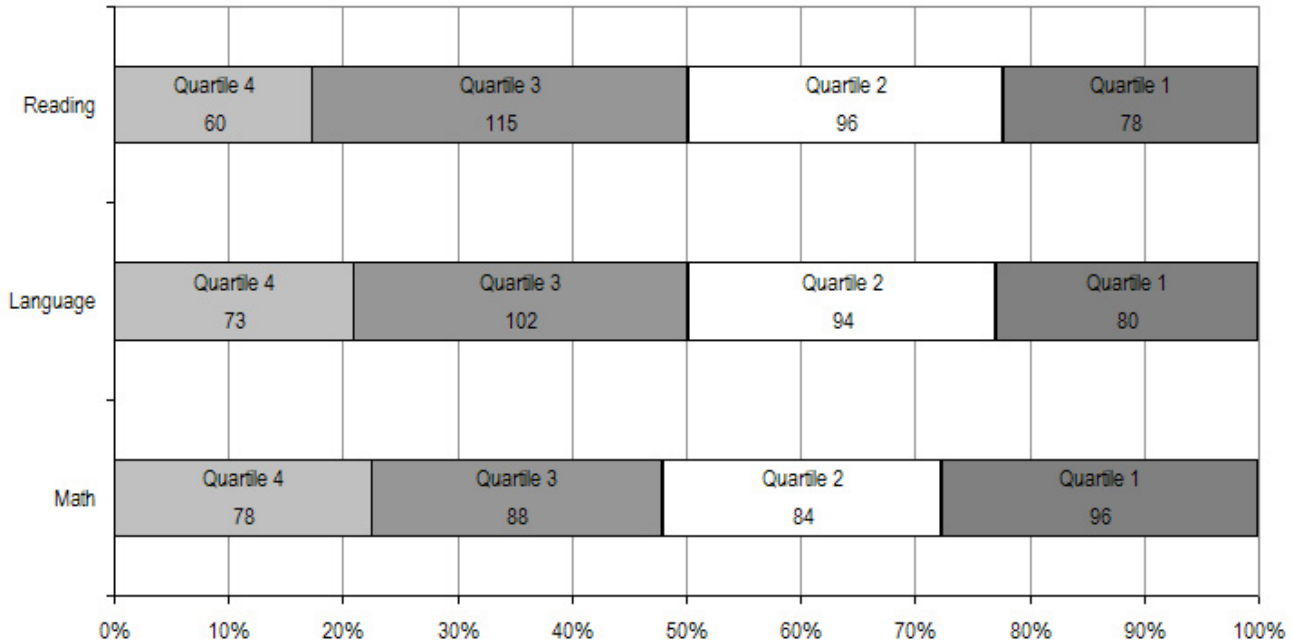


* 2007-08 was the first year Science was administered for grades 4, 8 and 10 on the SBA.

Wendler Middle School TerraNova Grade 7 Percent in Each Quartile								
Reading	Above Average		Average				Below Average	
	4th Quartile (76-99 percentile)		3rd Quartile (51-75 percentile)		2nd Quartile (26-50 percentile)		1st Quartile (1-25 percentile)	
	School	District	School	District	School	District	School	District
07-08	17.19%	30.31%	32.95%	32.50%	27.51%	24.54%	22.35%	12.66%
06-07	34.5%	35.6%	28.4%	28.0%	22.6%	21.5%	14.5%	14.9%
05-06	25.9%	34.6%	35.2%	28.4%	24.4%	21.8%	14.4%	15.3%
04-05	25.9%	33.9%	25.7%	27.1%	25.9%	21.7%	22.5%	17.4%
03-04	27.6%	35.1%	31.6%	28.2%	25.3%	21.4%	15.6%	15.3%
Language								
07-08	20.92%	30.26%	29.23%	29.23%	26.93%	25.08%	22.92%	15.43%
06-07	34.3%	35.4%	28.7%	28.7%	22.3%	21.5%	14.7%	14.3%
05-06	30.1%	34.9%	30.3%	28.4%	25.7%	21.4%	13.9%	15.3%
04-05	23.6%	34.4%	33.2%	28.2%	22.5%	20.5%	20.8%	16.9%
03-04	27.0%	35.3%	32.4%	28.5%	25.5%	21.7%	15.1%	14.5%
Mathematics								
07-08	22.54%	32.27%	25.43%	26.81%	24.28%	24.16%	27.75%	16.76%
06-07	29.7%	31.5%	26.9%	28.3%	26.6%	23.0%	16.8%	17.2%
05-06	23.0%	31.4%	26.0%	27.8%	28.4%	23.4%	22.5%	17.4%
04-05	18.0%	29.7%	27.4%	26.4%	25.7%	22.9%	28.9%	20.9%
03-04	25.6%	30.2%	26.6%	27.6%	27.6%	23.9%	20.2%	18.4%

The double bold line indicates a change from the TerraNova 2nd edition to the TerraNova 3rd edition.

2007-08 TerraNova 3rd Edition Grade 7 Percent and Count of Students in Each Quartile for Wendler Middle School



Climate Survey Results for Wendler Middle School

The Anchorage School District administered the School Climate and Connectedness Surveys in spring 2008 to students in grades 5-12, all school staff and parents/guardians of students in grades K-12. The surveys were done to provide schools with information about perceptions and experiences related to school climate for use in setting school goals and redirecting resources. In the spring of 2008 grades 3 and 4 students were involved in a pilot survey for measuring school climate and connectedness. The results are currently under review by the American Institutes for Research.

Respondents were asked to answer a series of questions that were related to a certain concept. For each item, there were five options from which to choose a response. The answer options ranged from strongly disagree (1) to strongly agree (5).

Student Survey Response Rate – Grades 5-12			
	Wendler Middle School	Overall Middle Schools	District**
# Surveys Completed	672	5,722	21,629
# Reportable Surveys	581	5,021	18,508
# Students Enrolled*	752	7,188	28,945
Reportable Response Rate	77.26%	69.85%	63.94%

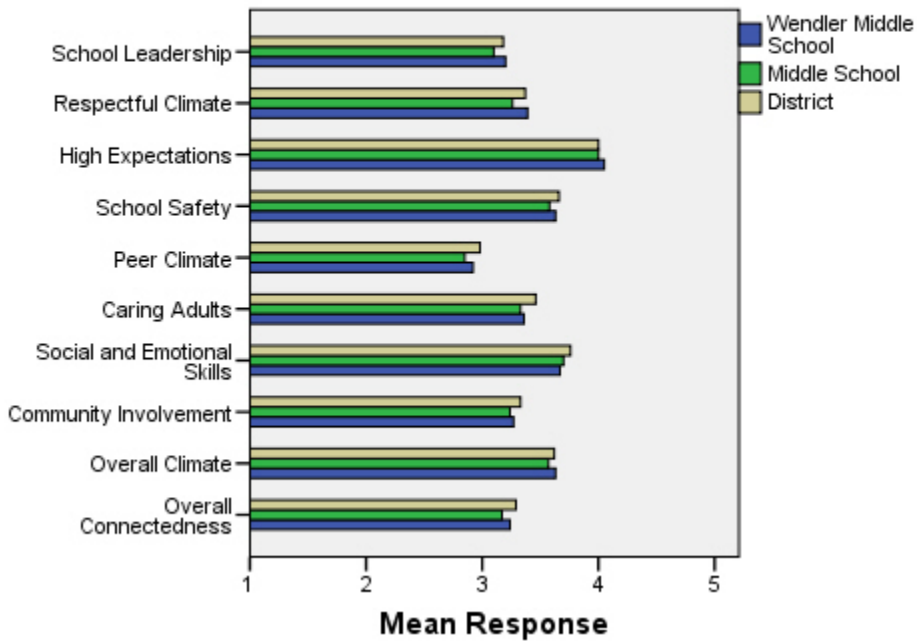
*Number enrolled as of April 1, 2008

**District data does not include KCC responses

Each question in the survey related to a factor or concept, and a score was calculated based on the mean response for the questions related to each factor. The factors measured in the survey were:

- **School Leadership and Student Involvement:** This factor reflects students' feelings about the decision making of school leaders as well as student participation in the school governance. Students selected responses between 1 and 5 where 1 indicates a low level of school leadership and student involvement and 5 indicates a high level of school leadership and student involvement.
- **Respectful Climate:** This factor reflects students' feelings about fairness of rules and respect for students' contributions. Students selected responses between 1 and 5 where 1 indicates a lack of a respectful climate and 5 indicates a highly respectful climate for students.
- **High Expectations:** This factor reflects students' feelings about their own expectations as well as those of adults in their school and community. Students selected responses between 1 and 5 where 1 indicates a lack of high expectations and 5 indicates a high level of high expectations.
- **School Safety:** This factor reflects students' feelings about bullies and gangs at school as well as general crime and violence in the community. Students selected responses between 1 and 5 where 1 indicates a low level of school safety and 5 indicates a high level of school safety.
- **Peer Climate:** This factor reflects students' feelings about how respectful students are to one another and how helpful students are to other students. Students selected responses between 1 and 5 where 1 indicates a more negative peer climate and 5 indicates a very positive peer climate at the school.
- **Caring Adults:** This factor reflects students' feelings about how close they feel to adults in the school. Students selected responses between 1 and 5 where 1 indicates a lack of caring adult relationships and 5 indicates strong caring adult relationships at the school.
- **Social and Emotional Learning:** This factor reflects students' ability to think about the consequences of their actions and to empathize with others. Students selected responses between 1 and 5 where 1 indicates that students at the school perceive themselves as having poorer social and emotional learning, and 5 indicates higher levels of social and emotional learning.
- **Community Involvement:** This factor reflects students' feelings about how supportive and welcoming the school is with parents and the community. Students selected responses between 1 and 5 where 1 indicates a less supportive and welcoming environment and 5 indicates a more supportive and welcoming environment.
- **Overall Climate:** The overall climate score was computed as the mean of three scales: school leadership, high expectations and school safety.
- **Overall Connectedness:** Overall connectedness score was computed as a mean of four scales: respectful climate, peer climate, caring adults and community involvement.

Climate and Connectedness Student Survey - Wendler



Student Survey Mean Response by Factors Related to School Climate - Overall District			
	Wendler Middle School	Overall Middle Schools	District
School Leadership	3.20	3.10	3.18
Respectful Climate	3.39	3.26	3.37
High Expectations	4.05	4.00	4.00
School Safety	3.63	3.58	3.66
Peer Climate	2.92	2.85	2.98
Caring Adults	3.36	3.33	3.46
Social and Emotional Skills	3.67	3.70	3.76
Community Involvement	3.27	3.24	3.33
Overall Climate	3.63	3.57	3.62
Overall Connectedness	3.24	3.17	3.29

Range is from a low of 1 to a high of 5

Students were also asked to answer questions related to school danger. The following table provides the responses for those questions:

Student Survey Results of the School Danger Questions - Percent of Students Responding in Each Category					
	0 Times	1-2 Times	3-6 Times	7-12 Times	> 12 Times
Wendler Middle School					
Under the influence of drugs?	70.93%	18.34%	6.23%	1.90%	2.60%
Under the influence of alcohol?	76.74%	15.80%	4.51%	1.39%	1.56%
Destroy things (vandalism)?	42.36%	33.68%	13.54%	5.38%	5.03%
Get into fights?	26.34%	37.44%	23.40%	6.24%	6.59%
Steal things?	45.64%	28.22%	12.37%	7.49%	6.27%
Threaten or bully?	32.00%	27.30%	17.74%	10.78%	12.17%
Under the influence of inhalants?	73.65%	13.79%	5.93%	2.44%	4.19%
Carry weapons?	76.22%	15.63%	4.69%	0.69%	2.78%
Overall Middle Schools					
Under the influence of drugs?	64.66%	18.15%	7.88%	2.73%	6.57%
Under the influence of alcohol?	68.04%	16.94%	6.71%	3.34%	4.97%
Destroy things (vandalism)?	37.30%	30.56%	16.24%	7.13%	8.77%
Get into fights?	23.45%	34.39%	22.40%	8.21%	11.55%
Steal things?	40.02%	27.06%	14.98%	8.34%	9.60%
Threaten or bully?	28.58%	25.86%	17.04%	10.29%	18.23%
Under the influence of inhalants?	67.97%	15.45%	6.70%	3.13%	6.76%
Carry weapons?	68.29%	21.26%	4.76%	1.95%	3.75%
District					
Under the influence of drugs?	60.45%	15.05%	9.54%	3.92%	11.04%
Under the influence of alcohol?	63.11%	16.37%	8.90%	4.43%	7.19%
Destroy things (vandalism)?	41.26%	29.47%	15.45%	5.88%	7.94%
Get into fights?	26.40%	35.20%	21.96%	7.11%	9.33%
Steal things?	44.80%	25.68%	13.81%	6.98%	8.74%
Threaten or bully?	32.21%	26.21%	16.68%	9.27%	15.63%
Under the influence of inhalants?	72.79%	14.21%	5.66%	2.48%	4.87%
Carry weapons?	69.45%	19.15%	5.34%	2.01%	4.06%

Student Survey Results of the Mean Factor Score by Ethnicity (Self-Reported)							
	AKNA/AI	AF AM	Hispanic	Asian/NH	White	Other	Multi-Ethnic
Wendler Middle School							
School Leadership	3.34	2.99	3.25	3.28	3.14	3.32	3.16
Respectful Climate	3.52	3.01	3.28	3.49	3.44	3.39	3.32
High Expectations	3.97	4.10	4.02	4.11	4.06	4.06	4.02
School Safety	3.65	3.53	3.52	3.42	3.78	3.44	3.89
Peer Climate	3.11	2.76	2.75	3.07	2.85	2.91	3.02
Caring Adults	3.33	3.28	3.27	3.22	3.46	3.43	3.42
Social and Emotional Skills	3.64	3.49	3.70	3.78	3.67	3.73	3.61
Community Involvement	3.33	3.16	3.37	3.29	3.26	3.33	3.19
Overall Climate	3.66	3.56	3.63	3.60	3.66	3.61	3.70
Overall Connectedness	3.31	3.08	3.18	3.28	3.25	3.28	3.23
Overall Middle Schools							
School Leadership	3.26	2.96	3.09	3.21	3.08	3.16	3.01
Respectful Climate	3.38	3.00	3.26	3.30	3.31	3.24	3.14
High Expectations	3.98	3.87	3.96	4.02	4.04	3.97	3.94
School Safety	3.51	3.42	3.51	3.40	3.72	3.39	3.56
Peer Climate	2.93	2.69	2.79	2.95	2.86	2.80	2.82
Caring Adults	3.38	3.23	3.24	3.24	3.40	3.31	3.28
Social and Emotional Skills	3.67	3.54	3.68	3.75	3.75	3.67	3.61
Community Involvement	3.30	3.10	3.20	3.23	3.28	3.23	3.18
Overall Climate	3.58	3.43	3.54	3.55	3.62	3.52	3.52
Overall Connectedness	3.23	2.99	3.13	3.18	3.21	3.15	3.11
District							
School Leadership	3.33	3.14	3.19	3.28	3.14	3.17	3.15
Respectful Climate	3.48	3.18	3.32	3.39	3.39	3.37	3.33
High Expectations	3.98	3.94	3.96	4.02	4.02	4.00	4.01
School Safety	3.60	3.48	3.55	3.47	3.78	3.51	3.62
Peer Climate	3.01	2.85	2.94	3.05	3.00	2.92	2.93
Caring Adults	3.49	3.43	3.37	3.33	3.51	3.42	3.46
Social and Emotional Skills	3.73	3.66	3.73	3.81	3.78	3.75	3.74
Community Involvement	3.37	3.22	3.31	3.29	3.34	3.34	3.31
Overall Climate	3.64	3.52	3.57	3.59	3.65	3.56	3.60
Overall Connectedness	3.33	3.17	3.24	3.26	3.31	3.26	3.27

Staff Survey Response Rate			
	Wendler Middle School	Overall Middle Schools	District**
# Surveys Completed	52	522	2,980
# Reportable Surveys	51	521	2,968
# Staff Members*	95	789	5,549
Reportable Response Rate	53.68%	66.03%	53.49%

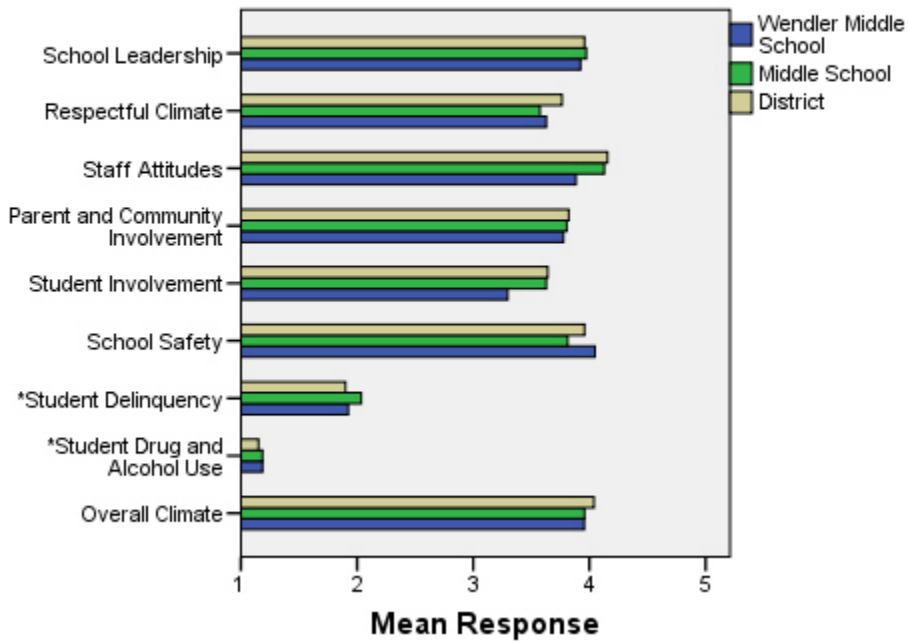
*Number staff as of April 1, 2008

**Includes KCC responses

Each question in the survey related to a factor or concept, and a score was calculated based on the mean response for the questions related to each factor. The factors were:

- **School Leadership:** This factor reflects staff members' feelings about the decision making of school leaders as well as the fairness of school rules. Staff members selected responses between 1 and 5 where 1 indicates a low level of school leadership and 5 indicates a high level of school leadership.
- **Respectful Climate:** This factor reflects staff members' feelings about how students treat each other and how well students and staff members treat one another. Staff members selected responses between 1 and 5 where 1 indicates a low level of respect and 5 indicates a high level.
- **Staff Attitudes:** This scale reflects staff members' feelings about the competence of teachers as well as how positive their attitudes are towards their jobs. Staff members selected responses between 1 and 5 where 1 indicates more negative staff attitudes and 5 indicates highly positive staff attitudes.
- **Parent and Community Involvement:** This factor reflects staff members' feelings about how accessible the school is for parents as well as how connected adults in the community are to the school. Staff members selected responses between 1 and 5 where 1 indicates a low level of parent and community involvement and 5 indicates a high level of parent and community involvement.
- **Student Involvement:** This factor reflects staff members' feeling about how involved students are in the decision making process. Staff members selected responses between 1 and 5 where 1 indicates a low level of student involvement and 5 indicates a high level of student involvement.
- **School Safety:** This factor reflects staff members' feelings about the impact of gangs and bullies as well as general crime and violence in the community. Staff members selected responses between 1 and 5 where 1 indicates a low level school safety and 5 indicates a high level of school safety.
- **Student Delinquency:** This factor uses staff members' reports of observing students getting into fights, stealing and bullying. The student delinquency and student drug and alcohol use scales differ from the other factors since the higher the score is the more negative the response. Staff members selected responses between 1 and 5 where 1 indicates a low level of student delinquency and 5 indicates a high level of student delinquency.
- **Student Drug and Alcohol Use:** This factor uses staff members' reports of observing students under the influence of drugs or alcohol. The student delinquency and student drug and alcohol use scales differ from the other factors since the higher the score is the more negative the response. Staff members selected responses between 1 and 5 where 1 indicates a low level of student drug and alcohol use and 5 indicates a high level of student drug and alcohol use.
- **Overall Climate:** Computed as the mean of 8 scales: school leadership, respectful climate, staff attitudes, parent and community involvement, student involvement, school safety, student delinquency, and drug and alcohol use scores.

Climate and Connectedness Staff Survey - Wendler



Staff Survey Mean Response by Factors Related to School Climate - Overall District			
	Wendler Middle School	Overall Middle Schools	District
School Leadership	3.92	3.97	3.96
Respectful Climate	3.63	3.57	3.76
Staff Attitudes	3.89	4.13	4.16
Parent & Community Involvement	3.78	3.81	3.82
Student Involvement	3.30	3.63	3.64
School Safety	4.05	3.81	3.96
Student Delinquency*	1.93	2.04	1.90
Student Drug & Alcohol Use*	1.19	1.19	1.15
Overall Climate	3.96	3.96	4.04

Range is from a low of 1 to a high of 5

*Student Drug and Alcohol Use and Student Delinquency factor scale scores differ from other factors since the higher the score is the more negative the response.

Staff members were also asked to answer questions related to school danger. The following table provides the responses for those questions:

Staff Survey Results of the School Danger Questions - Percent of Staff Responding in Each Category					
	0 Times	1-2 Times	3-6 Times	7-12 Times	> 12 Times
Wendler Middle School					
Under the influence of drugs?	73.17%	21.95%	4.88%	0.00%	0.00%
Under the influence of alcohol?	78.05%	21.95%	0.00%	0.00%	0.00%
Destroy things (vandalism)?	26.19%	47.62%	16.67%	7.14%	2.38%
Get into fights?	28.57%	42.86%	23.81%	2.38%	2.38%
Steal things?	45.24%	28.57%	21.43%	2.38%	2.38%
Threaten or bully?	11.90%	45.24%	21.43%	7.14%	14.29%
Under the influence of inhalants?	97.56%	2.44%	0.00%	0.00%	0.00%
Carry weapons?	87.50%	10.00%	2.50%	0.00%	0.00%
Overall Middle Schools					
Under the influence of drugs?	78.08%	15.88%	3.80%	1.57%	0.67%
Under the influence of alcohol?	83.94%	14.03%	1.36%	0.45%	0.23%
Destroy things (vandalism)?	26.97%	41.57%	19.33%	7.87%	4.27%
Get into fights?	31.99%	38.03%	19.02%	6.49%	4.47%
Steal things?	37.75%	37.53%	16.18%	3.60%	4.94%
Threaten or bully?	14.64%	36.26%	25.68%	12.61%	10.81%
Under the influence of inhalants?	95.02%	4.07%	0.45%	0.23%	0.23%
Carry weapons?	83.75%	14.67%	0.90%	0.23%	0.45%
District					
Under the influence of drugs?	82.61%	11.54%	4.11%	1.19%	0.55%
Under the influence of alcohol?	86.69%	10.21%	2.34%	0.60%	0.16%
Destroy things (vandalism)?	38.03%	36.81%	16.05%	5.07%	4.04%
Get into fights?	35.38%	38.78%	16.46%	4.83%	4.55%
Steal things?	41.82%	37.07%	14.02%	4.28%	2.81%
Threaten or bully?	22.88%	37.15%	21.97%	8.96%	9.04%
Under the influence of inhalants?	97.27%	2.42%	0.24%	0.04%	0.04%
Carry weapons?	88.47%	10.26%	1.11%	0.08%	0.08%

Staff Survey Results of the Mean Factor Score by Ethnicity (Self-Reported)						
	AKNA/AI	AF AM	Hispanic	Asian/NH	White	Multi-Ethnic
Wendler Middle School						
School Leadership	3.66	3.81	***	4.25	3.98	3.54
Respectful Climate	3.37	3.40	***	4.13	3.64	3.67
Staff Attitudes	3.65	3.30	***	4.67	3.89	3.70
Parent and Community Involvement	3.43	3.50	***	4.29	3.81	3.79
Student Involvement	3.13	3.17	***	4.00	3.28	3.00
School Safety	3.68	3.80	***	4.40	4.08	4.10
* Student Delinquency	2.00	2.70	***	1.20	1.91	2.30
* Student Drug and Alcohol Use	1.07	1.67	***	1.00	1.20	1.17
Overall Climate	3.58	3.80	***	4.44	3.96	3.85
Overall Middle Schools						
School Leadership	3.71	3.94	4.09	4.28	3.98	4.15
Respectful Climate	3.45	3.60	3.76	3.68	3.57	3.65
Staff Attitudes	3.88	4.03	4.20	4.18	4.13	4.24
Parent and Community Involvement	3.49	3.95	3.96	4.06	3.80	3.87
Student Involvement	3.31	3.70	4.22	4.10	3.61	3.63
School Safety	3.63	3.71	3.80	3.82	3.82	3.80
* Student Delinquency	2.11	2.67	1.60	1.92	2.03	2.03
* Student Drug and Alcohol Use	1.07	1.40	1.03	1.04	1.19	1.15
Overall Climate	3.63	3.90	4.13	4.11	3.96	4.08
District						
School Leadership	3.99	3.99	4.13	4.15	3.96	4.06
Respectful Climate	3.66	3.83	3.84	3.96	3.76	3.84
Staff Attitudes	4.06	4.11	4.27	4.22	4.16	4.29
Parent and Community Involvement	3.75	3.91	3.94	3.93	3.82	3.85
Student Involvement	3.62	3.67	3.85	3.88	3.64	3.72
School Safety	3.82	3.94	4.06	3.94	3.97	3.94
* Student Delinquency	1.88	1.90	1.67	1.61	1.91	2.05
* Student Drug and Alcohol Use	1.12	1.26	1.03	1.16	1.15	1.13
Overall Climate	3.96	4.04	4.20	4.18	4.04	4.09

*Student Drug and Alcohol Use and Student Delinquency factor scale scores differ from other factors since the higher the score is the more negative the response.

**Staff survey results do not include an 'Other' ethnicity category since staff in that category all chose at least one other ethnicity in addition to 'Other' and were included in the 'Multi-Ethnic' category as a result.

***Results can not be calculated because of missing responses

Parent/Guardian Survey Response Rate			
	Wendler Middle School	Overall Middle Schools	District**
# Surveys Completed	273	1,648	7,415
# Primary Guardians*	755	7,219	48,693
Response Rate	36.16%	22.83%	15.23%

*Number students enrolled as of April 1, 2008 without dual guardians included

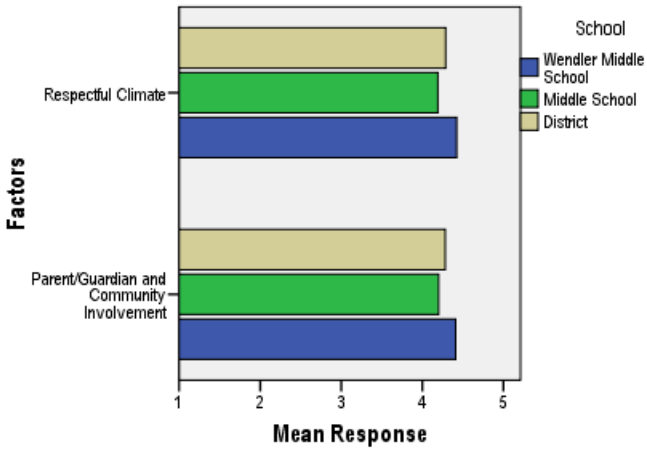
**District data

- 1) does not include KCC responses;
- 2) does include responses without a school designation

Two factors are calculated from the Parent/Guardian Survey. All results other than the factor scores below are reported by individual question: questions in the graphs are condensed phrases from the full question, while questions in the tables are the full question.

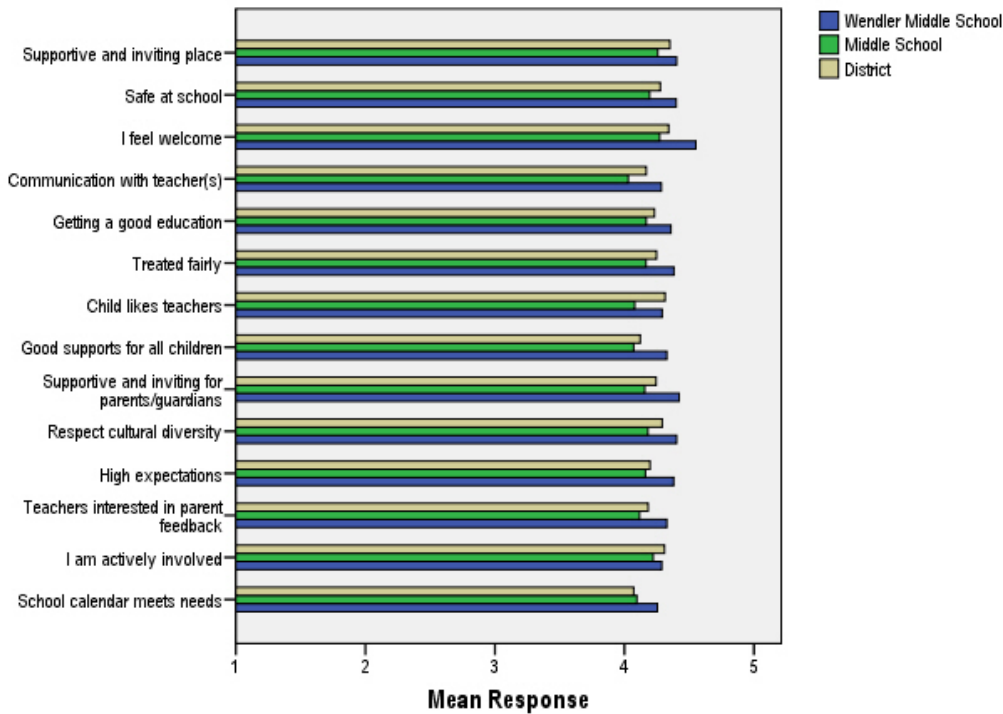
- **Respectful Climate:** This factor is calculated by determining the mean of five questions: 1) My child’s school is a supportive and inviting place, 2) I feel welcome at this school, 3) I am satisfied with communication with my child’s teacher(s), 4) This school is a supportive and inviting place for parents/guardians and 5) Adults at this school respect cultural diversity.
- **Parent/Guardian and Community Involvement:** This factor is calculated by determining the mean of five questions: 1) I feel welcome at this school, 2) This school is a supportive and inviting place for parents/guardians, 3) Adults at this school respect cultural diversity, 4) Teacher’s at my child’s school are interested in what I have to say and 5) I feel like I am actively involved in my child’s education.

Parent/Guardian Survey Mean Factor Scores (Range is from a low of 1 to a high of 5)



Parent/Guardian Factor Scores			
	Wendler Middle School	Overall Middle Schools	District
Respectful Climate	4.42	4.19	4.29
Parent/Guardian and Community Involvement	4.41	4.20	4.28

Climate and Connectedness Parent/Guardian Survey - Wendler



Parent/Guardian Mean Response by Questions Related to School Climate - Overall			
	Wendler Middle School	Overall Middle Schools	District
My child's school is a supportive and inviting place	4.40	4.26	4.35
My child is safe at school	4.40	4.19	4.28
I feel welcome at this school	4.55	4.27	4.34
I am satisfied with communication with my child's teacher(s)	4.28	4.03	4.17
My child is getting a good education at this school	4.36	4.17	4.23
My child is treated fairly at school	4.38	4.17	4.25
My child likes his/her teachers	4.29	4.08	4.31
At this school, there are good supports for all children, including children with learning disabilities	4.33	4.07	4.12
This school is a supportive and inviting place for parents/guardians	4.42	4.16	4.24
Adults at this school respect cultural diversity	4.40	4.18	4.29
Adults at this school have high expectations of my child	4.38	4.16	4.20
Teachers at my child's school are interested in what I have to say	4.33	4.12	4.18
I feel like I am actively involved in my child's education	4.29	4.22	4.31
The district's school calendar meets the needs of my child and our family	4.25	4.10	4.07

Range is from a low of 1 to a high of 5

Parent/Guardian Mean Response by Questions Related to School Climate by Ethnicity (Self-Reported)							
Wendler Middle School	AF AM	AKNA/AI	Asian/NH	White	Hispanic	ME	Other
My child's school is a supportive and inviting place	4.42	4.52	4.66	4.33	4.47	4.23	4.30
My child is safe at school	4.39	4.67	4.79	4.27	4.44	4.13	4.09
I feel welcome at this school	4.67	4.67	4.74	4.50	4.44	4.39	4.45
I am satisfied with communication with my child's teacher(s)	4.21	4.33	4.58	4.23	4.35	4.10	4.36
My child is getting a good education at this school	4.11	4.59	4.53	4.32	4.35	4.16	4.36
My child is treated fairly at school	4.21	4.50	4.65	4.35	4.59	4.07	4.45
My child likes his/her teachers	3.89	4.50	4.62	4.28	4.24	4.00	4.36
At this school, there are good supports for all children, including children with learning disabilities	4.18	4.50	4.64	4.28	4.18	4.13	4.27
This school is a supportive and inviting place for parents/guardians	4.32	4.50	4.65	4.40	4.29	4.32	4.45
Adults at this school respect cultural diversity	4.44	4.46	4.58	4.37	4.31	4.19	4.64
Adults at this school have high expectations of my child	4.21	4.52	4.50	4.33	4.24	4.32	4.55
Teachers at my child's school are interested in what I have to say	4.47	4.48	4.53	4.23	4.12	4.19	4.64
I feel like I am actively involved in my child's education	4.47	4.39	4.35	4.25	4.12	4.06	4.45
The district's school calendar meets the needs of my child and our family	4.47	4.43	4.61	4.15	4.18	4.00	4.00
Overall Middle Schools							
My child's school is a supportive and inviting place	4.13	4.25	4.24	4.29	4.30	4.28	4.14
My child is safe at school	4.04	4.18	4.30	4.21	4.07	4.22	3.93
I feel welcome at this school	4.07	4.33	4.22	4.31	4.19	4.31	4.23
I am satisfied with communication with my child's teacher(s)	3.80	4.03	4.05	4.04	4.13	4.06	4.00
My child is getting a good education at this school	3.93	4.19	4.18	4.19	4.24	4.20	4.19
My child is treated fairly at school	3.77	4.12	4.17	4.23	4.21	4.16	4.09
My child likes his/her teachers	3.77	4.13	4.17	4.10	4.09	4.01	4.00
At this school, there are good supports for all children, including children with learning disabilities	3.81	4.18	4.10	4.08	4.06	4.09	3.90
This school is a supportive and inviting place for parents/guardians	3.97	4.18	4.16	4.18	4.11	4.24	3.95
Adults at this school respect cultural diversity	3.85	4.10	4.10	4.26	4.07	4.24	4.19
Adults at this school have high expectations of my child	3.88	4.20	4.11	4.20	4.17	4.20	4.09
Teachers at my child's school are interested in what I have to say	3.96	4.20	4.12	4.12	4.08	4.15	4.16
I feel like I am actively involved in my child's education	4.36	4.22	4.19	4.21	4.32	4.15	4.07
The district's school calendar meets the needs of my child and our family	4.28	4.17	4.11	4.07	4.23	4.08	3.93
District							
My child's school is a supportive and inviting place	4.20	4.37	4.37	4.37	4.41	4.37	4.20
My child is safe at school	4.18	4.31	4.31	4.29	4.29	4.30	4.11
I feel welcome at this school	4.18	4.31	4.36	4.36	4.38	4.40	4.23
I am satisfied with communication with my child's teacher(s)	3.99	4.21	4.23	4.16	4.32	4.20	4.03
My child is getting a good education at this school	4.09	4.28	4.31	4.23	4.33	4.26	4.03
My child is treated fairly at school	3.94	4.21	4.24	4.29	4.30	4.24	4.08
My child likes his/her teachers	4.06	4.33	4.35	4.33	4.31	4.34	4.20
At this school, there are good supports for all children, including children with learning disabilities	3.90	4.19	4.23	4.11	4.24	4.18	3.97
This school is a supportive and inviting place for parents/guardians	4.05	4.21	4.29	4.26	4.31	4.31	4.05
Adults at this school respect cultural diversity	4.02	4.20	4.22	4.34	4.29	4.31	4.17
Adults at this school have high expectations of my child	4.05	4.24	4.21	4.21	4.26	4.20	3.94
Teachers at my child's school are interested in what I have to say	4.04	4.22	4.17	4.20	4.28	4.19	4.05
I feel like I am actively involved in my child's education	4.36	4.29	4.24	4.33	4.37	4.30	4.20
The district's school calendar meets the needs of my child and our family	4.18	4.19	4.16	4.06	4.21	4.02	3.66

Range is from a low of 1 to a high of 5